

GOOD SAMARITAN HOSPITAL

ED FAST TRACK REMODEL

Fire Alarm and Detection System

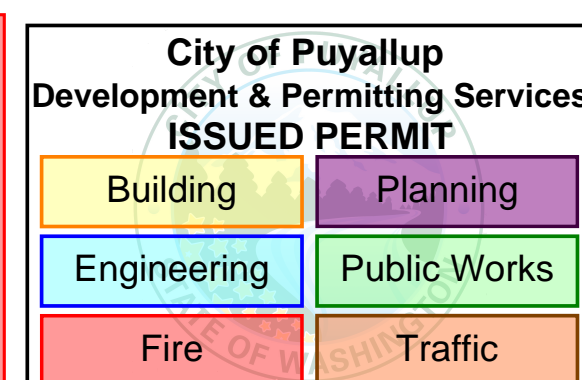
Equipment Supplied By



City of Puyallup
Fire
REVIEWED
FOR
COMPLIANCE
DDrake
05/21/2024
9:49:20 AM

THE APPROVED CONSTRUCTION PLANS AND ALL ENGINEERING MUST BE POSTED ON THE JOB AT ALL INSPECTIONS IN A VISIBLE AND READILY ACCESSIBLE LOCATION.

Approval of submitted plans is not an approval of omissions or oversight by this office or noncompliance with any applicable regulations of local government. The contractor is responsible for making sure that the building complies with all applicable building codes and regulations of the local government.



Project Team Contact Information

Sales Representative

Tim Duggan
timothy.duggan@jci.com
Phone: 253-509-8816

Project Manager

Kevin Barreith
kevin.james.barreith@jci.com
Phone: 206-303-7765

Technician Scheduler

Yvonne Thompson
yvonne.thompson@jci.com
Phone: 206-777-4860

Project Designer

Eric Beck
eric.beck@jci.com
Phone: 206-777-4821
NICET Fire Alarm System Level III, #148077

DRAWING LIST			
SHEET NAME	DRAWING NAME	ELECTRONIC DRAWING NAME	INCLUDED IN THIS PROJECT
FA-COV-01	TITLE SHEET	FA-COVER	X
FA-COV-02	COVER SHEET	FA-COVER	X
FA-COV-02.1	COVER SHEET	FA-COVER	X
FA-COV-03	COVER SHEET	FA-COVER	
FA-COV-04	COVER SHEET	FA-COVER	
FA-COV-05	COVER SHEET	FA-COVER	
FA-COV-06	PANEL LAYOUT	FA-COVER	
FA-COV-07	PANEL LAYOUT	FA-COVER	
FA-COV-08	PANEL LAYOUT	FA-COVER	
FA-COV-09	SUP. PANEL LAYOUT	FA-COVER	
FA-RIS-01	RISER SHEET	FA-RISER	
FA-RIS-02	RISER SHEET	FA-RISER	
FA-DET-01	DETAIL SHEET	FA-COVER	
FA-DET-02	DETAIL SHEET(T.I.)	FA-COVER	X
FA-SCP-01	SMOKE CONTROL PANEL	FA-SCP-01	
FA-LEVA-W	LEVEL A WEST FLOOR PLAN	FA-LEVEL A	
FA-LEVA-E	LEVEL A EAST FLOOR PLAN	FA-LEVEL A	
FA-LEV1-W-D	LEVEL 1 WEST DEMO PLAN	FA-LEVEL 1-D	X
FA-LEV1-W	LEVEL 1 WEST FLOOR PLAN	FA-LEVEL 1	X
FA-LEV1-E-D	LEVEL 1 EAST DEMO PLAN	FA-LEVEL 1-D	X
FA-LEV1-E	LEVEL 1 EAST FLOOR PLAN	FA-LEVEL 1	X
FA-LEV2-W	LEVEL 2 WEST FLOOR PLAN	FA-LEVEL 2	
FA-LEV2-E	LEVEL 2 EAST FLOOR PLAN	FA-LEVEL 2	
FA-LEV3-W	LEVEL 3 WEST FLOOR PLAN	FA-LEVEL 3	
FA-LEV3-E	LEVEL 3 EAST FLOOR PLAN	FA-LEVEL 3	
FA-LEV4-W	LEVEL 4 WEST FLOOR PLAN	FA-LEVEL 4	
FA-LEV4-E	LEVEL 4 EAST FLOOR PLAN	FA-LEVEL 4	
FA-LEV5-W	LEVEL 5 WEST FLOOR PLAN	FA-LEVEL 5	
FA-LEV5-E	LEVEL 5 EAST FLOOR PLAN	FA-LEVEL 5	
FA-LEV6-W	LEVEL 6 WEST FLOOR PLAN	FA-LEVEL 6	
FA-LEV6-E	LEVEL 6 EAST FLOOR PLAN	FA-LEVEL 6	
FA-LEV7-W	LEVEL 7 WEST FLOOR PLAN	FA-LEVEL 7	
FA-LEV7-E	LEVEL 7 EAST FLOOR PLAN	FA-LEVEL 7	
FA-LEV8-W	LEVEL 8 WEST FLOOR PLAN	FA-LEVEL 8	
FA-LEV8-E	LEVEL 8 EAST FLOOR PLAN	FA-LEVEL 8	
FA-ROOF-W	ROOF WEST FLOOR PLAN	FA-ROOF	
FA-ROOF-E	ROOF EAST FLOOR PLAN	FA-ROOF	



NO.	DATE	REVISION DESCRIPTION	DRAFTER	ENGINEER	PROJECT #
47	9/20/19	DAILY PHARMACY RECORD DRAWINGS	RSC		610318294
48	9/21/22	EGRESS DOORS	DAP	EQB	660169145
	4/12/23	MCI PRE-ACTION PANEL UPGRADE	ARIH	EQB	660376984
	9/12/23	MCI PRE-ACTION PANEL UPGRADE - RECORD DRAWING	JOB		660376984
49	1/24/24	SSH ED FAST TRACK REMODEL	MAN	EQB	660479363

DRAWINGS REVIEWED BY:
Eric Beck, CET
NICET #228984
Fire Alarm Systems, Level III

**FIRE ALARM SYSTEM
TITLE SHEET**

GOOD SAMARITAN - PATIENT CARE TOWER
401 15TH AVENUE SE
PUYALLUP, WA 98371

APPROVED BY:
C. McCAMMON

DRAWN BY:
C. McCAMMON

DATE:
8/12/09

SITE/PROJECT NUMBER:
458413141/943123501

SHEET NUMBER:
FA-COV-01

GENERAL FIRE ALARM SYSTEM NOTES

- FIRE ALARM SYSTEM IS POWER LIMITED. METALLIC RACEWAY SHALL BE USED IF REQUIRED BY CODE, SPECIFICATIONS AND CONTRACT DOCUMENTS OR AHA.
- ALL RACEWAYS MUST BE FREE OF MOISTURE.
- REFER TO JOHNSON CONTROLS FIRE ALARM DATA SHEETS FOR PROPER TYPE AND SIZES OF REQUIRED DEVICE MOUNTING ELECTRICAL BOXES. ELECTRICAL CONTRACTOR IS RESPONSIBLE FOR PROPER INSTALLATION OF ALL DEVICES.
- AC VOLTAGE IS NOT PERMITTED IN THE SAME RACEWAY AS FIRE ALARM WIRING.
- UNRELATED (NON-FIRE ALARM) WIRING SHALL NOT BE IN THE SAME RACEWAY AS FIRE ALARM WIRING.
- ALL CONTRACTOR FIELD WIRING MUST ENTER ALARM CONTROL PANEL BACKBOX FOLLOWING POWER-LIMITED AND NON-POWER-LIMITED WIRING REQUIREMENTS. REFER TO INSTALLATION INSTRUCTIONS FOR MORE INFORMATION.
- ZONE CIRCUITS AND SIGNAL CIRCUITS ARE ELECTRICALLY SUPERVISED. BRANCH CIRCUITS SHALL BE LOOPED TO MAINTAIN INTEGRITY OF SUPERVISED CIRCUITS--TAPPING OF ZONE CIRCUITS AND SIGNAL CIRCUITS IS NOT PERMITTED.
- REFER TO FACP MODULE DIAGRAMS, INCLUDED WITH FACP, FOR SPECIFICATIONS AND INFORMATION ON INDIVIDUAL PANEL MODULES. VERIFY ALL CONNECTIONS WITH A JOHNSON CONTROLS FIELD TECHNICAL REPRESENTATIVE PRIOR TO TERMINATION.
- ALL FIRE ALARM WIRING SHALL TEST FREE OF OPENS, SHORTS AND GROUNDS.
- ALL WIRING SHALL BE LABELED AND TAGGED.
- ELECTRICAL CONTRACTOR IS RESPONSIBLE FOR INSTALLATION AND MAKING ALL FINAL CONNECTIONS PRIOR TO JOB CHECKOUT AND FINAL TESTING BY A JOHNSON CONTROLS FIELD TECHNICAL REPRESENTATIVE. CALL A MINIMUM OF 5 DAYS IN ADVANCE TO SCHEDULE A JOHNSON CONTROLS TECHNICIAN AT (206) 777-4880.
- ELECTRICAL CONTRACTOR IS RESPONSIBLE FOR MAKING ALL ARRANGEMENTS FOR INSPECTION, TEST AND CERTIFICATION OF THE FIRE ALARM SYSTEM BY ALL APPROPRIATE AUTHORITIES.
- UPON WRITTEN REQUEST, JOHNSON CONTROLS WILL PROVIDE WRITTEN INSTRUCTIONS REGARDING THE APPROPRIATE WIRE/CABLE FOR INSTALLATION OF THE EQUIPMENT(S) IDENTIFIED IN THESE DRAWINGS. JOHNSON CONTROLS SHALL NOT BE RESPONSIBLE FOR PROBLEMS OR DAMAGES RESULTING FROM THE USE OF WIRE/CABLE OTHER THAN THAT WHICH HAS BEEN IDENTIFIED IN WRITING BY JOHNSON CONTROLS FOR A SPECIFIC APPLICATION.
- ALL WIRING SHALL MEET ALL APPLICABLE NATIONAL ELECTRIC CODE ARTICLES FOR FIRE ALARM AND LOW VOLTAGE WIRING.

ARCHITECT: CLARK/KJOS ARCHITECTS
PORTLAND, OR

FIRE ALARM SYSTEM DESIGNED BY: JOHNSON CONTROLS
SEATTLE, WA

FIRE ALARM SYSTEM INSTALLED BY: GOOD SAMARITAN HOSPITAL
PUYALLUP, WA

EQUIPMENT FOR FIRE ALARM SYSTEM SUPPLIED BY: JOHNSON CONTROLS
SEATTLE, WA

WASHINGTON STATE ELECTRICAL CONTRACTORS NUMBER: JOHNSCP831PR

• THESE DRAWINGS DO NOT SUPERSEDE THE CONTRACT DRAWINGS AND SPECIFICATIONS. THEY ARE INTENDED AS A SUPPLEMENT ONLY AND MUST BE USED IN CONJUNCTION WITH THE CONTRACT DOCUMENTS. THEY DO NOT MODIFY THE CONTRACTORS OBLIGATIONS TO CONFORM TO THE PROJECTS ORIGINAL DESIGN CRITERIA.

Fire Alarm Network

Fire Alarm Control Panel - N7 (Level 1)

- Auxiliary Circuits**
- N7AUX(-2) Not Available
 - N7AUX3 Spare
 - N7AUX4 Auxiliary Power
 - N7AUX5 Not Available
 - N7AUX6 Auxiliary Power
 - N7AUX7 Not Available
 - N7AUX8 Auxiliary Power
 - N7AUX9 Level 1 Door Holders
 - N7AUX10 Level 1 East Link Door Holders
 - N7AUX(11-16) Spare

Node Assignments

- N1) Hospital - GCC
- N2) Hospital - FACP
- N3) Hospital West Wing - FACP
- N4) Parking Structure 2 - FACP
- N5) Central Utility Plant - FACP
- N6) Patient Care Tower - NDU
- N7) Patient Care Tower - Level 1 FACP
- N8) Patient Care Tower - Level 4 FACP

Fire Fighter Telephone Circuits

- N7:SIG(21) Stair 1
- N7:SIG(22) Stair 2/3
- N7:SIG(23) Elevator 1-3 Lobbies/CAB
- N7:SIG(24) Elevator 4-5 Lobbies/CAB
- N7:SIG(25) Elevator 6-7 Lobbies/CAB
- N7:SIG(26) Elevator 8 Lobbies/CAB
- N7:SIG(27) Elevator 9 Lobbies/CAB
- N7:SIG(28) Fire Pump Room
- N7:SIG(29) Spare

Speaker Circuits

Circuit	Watts
N7:SIG(30) Level 1 West	15.0
N7:SIG(31) Stair	3.0
N7:SIG(32) Stair 2/3	3.0
N7:SIG(33-35) Not Available	
Total Watts	21.0
Watts Provided	50.0

IDNET Channel #M1

- Level 1 - N7M1-2 to N7M1-32, N7M1-34 to N7M1-60, N7M1-62 to N7M1-75, N7M1-78 to N7M1-104, N7M1-106 to N7M1-178 to N7M1-179, N7M1-240 to N7M1-250
- Level 1 East Link - N7M1-180 to N7M1-170
- Level 1 Pharmacy - N7M1-171 to N7M1-178
- Stair 1 - N7M1-150 to N7M1-155, N7M1-157 to N7M1-159, N7M1-180 to N7M1-208
- Stair 2/3 - N7M1-141 to N7M1-149, N7M1-156, N7M1-211 to N7M1-235

0.000	0.004	0.008	0.012	0.016	0.020	0.024	0.028	0.032	0.036	0.040	0.044	0.048	0.052	0.056	0.060	0.064	0.068	0.072	0.076	0.080	0.084	0.088	0.092	0.096	0.100
0.000	0.004	0.008	0.012	0.016	0.020	0.024	0.028	0.032	0.036	0.040	0.044	0.048	0.052	0.056	0.060	0.064	0.068	0.072	0.076	0.080	0.084	0.088	0.092	0.096	0.100

Signal Circuits - FACP N7 (Level 1)	Current	Dist. (ft)	Voltage Drop
N7:SIG(-2) Not Available			
N7:SIG(3) Level 1 Northwest Strobes	0.786	520	2.06
N7:SIG(4) Level 1 Southwest Strobes	0.880	569	2.53
N7:SIG(5) Level 1 Northeast Strobes	0.826	650	2.71
N7:SIG(6-8) Not Available			
N7:SIG(9) Level 1 Northeast Central Strobes	0.940	660	3.13
N7:SIG(10) Level 1 Southeast Central Strobes	1.187	605	3.63
N7:SIG(11) Level 1 Southwest Strobes	0.880	569	2.53
N7:SIG(12) Level 1 East Link Strobes	0.180	545	0.50
N7:SIG(13) Spare	0.000		0.00
N7:SIG(14) Spare	0.000		0.00
N7:SIG(15-20) Not Available			
Total	5.657		

BATTERY CALCULATIONS - NDU N6 (1st Floor)

Does the system have an Emergency Generator that meets NEC 700.01? Yes X no

How many hours of battery standby are required? X 4 24 48 60 (4 hours minimum w/ Emergency Generators)

Qty	Part #	Description	Standby Current (A)	Total Standby (A)	Alarm Current (A)	Total Alarm (A)
1	4100-9151	Network Display Unit	0.7330	0.7330	0.7980	0.7980
4	4603-9101	LCD Annunciator	0.0300	0.1200	0.1700	0.6800
1	CEFL-L-GR-GP6	Smoke Control Panel	0.0168	0.0168	0.3120	0.3120
				0.0000		0.0000
Total Standby=			0.8698		1.7900	
Total Alarm=					4.0000	
Time (Hrs)						3.4792
Total Standby Current Required=			0.8698	X		
Total Alarm Current Required=			1.7900	X	0.0833	0.1491
Total=						3.6283
50% Depletion Factor=						1.8142
Total Amp/Hours Required=						5.4425
Total Amp/Hours Batteries Provided=					(1) set	33.0000

BATTERY CALCULATIONS - FACP N7 (1st Floor)

Does the system have an Emergency Generator that meets NEC 700.01? Yes X no

How many hours of battery standby are required? X 4 24 48 60 (4 hours minimum w/ Emergency Generators)

Qty	Part #	Description	Standby Current (A)	Total Standby (A)	Alarm Current (A)	Total Alarm (A)
1	4100-9111	Fire Alarm Control Panel	2.1184	2.1184	13.4330	13.4330
30	4906-9153	Speaker/Strobe 110cd	0.0000	0.0000	0.0900	1.8000
3	4906-9153	Speaker/Strobe 30cd	0.0000	0.0000	0.0300	0.2820
6	4906-9153	Speaker/Strobe 75cd	0.0000	0.0000	0.1860	1.1160
1	4906-9153	Speaker/Strobe 110cd	0.0000	0.0000	0.2520	0.2520
23	4906-9153	Single Spot	0.0000	0.0000	4.0000	1.3800
18	4098-9756	TrueAlarm Duct Smoke Sensor	0.0024	0.0384	0.0150	0.2400
12	4098-9843	Duct Detector Relay	0.0000	0.0000	0.0150	0.1800
22	2088-9008	Remote Relay	0.0000	0.0000	0.0150	0.3300
Total Standby=			2.1568		Total Alarm=	18.7630
Time (Hrs)						8.6272
Total Standby Current Required=			2.1568	X	4.0000	1.5630
Total Alarm Current Required=			18.7630	X	0.0833	1.5630
Total=						10.1902
50% Depletion Factor=						5.0951
Total Amp/Hours Required=						15.2852
Total Amp/Hours Batteries Provided=					(1) set	50.0000

SCOPE OF WORK:

MODIFY EXISTING FIRE ALARM SYSTEM; EMERGENCY DEPARTMENT FAST TRACK REMODEL. REMOVE EXISTING DEVICES AND ADD NEW DEVICES AS SHOWN ON SHEETS FA-LEV1-W AND FA-LEV1-E.

ALL WIRING TO BE CLASS B.

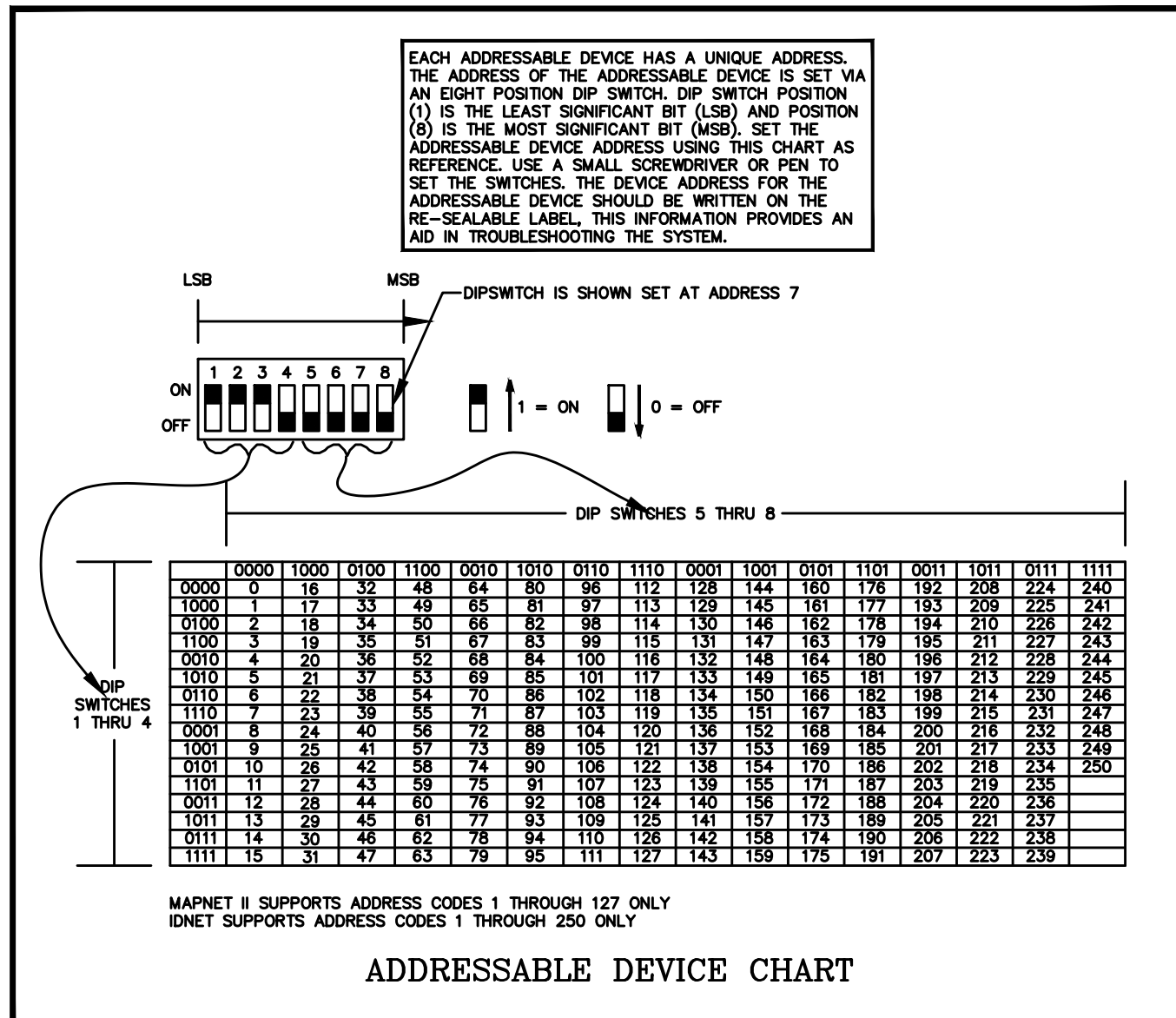
THE EXISTING FIRE ALARM SYSTEM SHALL NOT BE DISCONNECTED OR TAKEN OUT OF SERVICE WITHOUT WRITTEN PERMISSION FROM THE OWNER. IT IS THE CONTRACTORS RESPONSIBILITY TO COORDINATE WITH THE OWNER THE TIMING OF ANY EXISTING FIRE ALARM SYSTEM DEMOLITION WORK.

ELECTRICAL CONTRACTOR

- ELECTRICAL CONTRACTOR IS TO SCHEDULE A PRELIMINARY SITE MEETING WITH A JOHNSON CONTROLS TECHNICAL REPRESENTATIVE. THESE MEETINGS ARE FOR REVIEWING EQUIPMENT LISTS, INSTALLATION PROCEDURES, AND PROVIDING ANSWERS TO QUESTIONS RELATIVE TO SYSTEM INSTALLATION.
- PLEASE ALLOW A MINIMUM OF FIVE WORKING DAYS ADVANCE NOTICE TO SCHEDULE A TECHNICAL REPRESENTATIVE.
- TO SCHEDULE A MEETING PLEASE CONTACT OUR TECHNICIAN SCHEDULER AT (206) 777-4880
- DO NOT USE FIRE ALARM CABINET AS TERMINAL CABINET

ELECTRICAL CONTRACTOR ASBUILTS

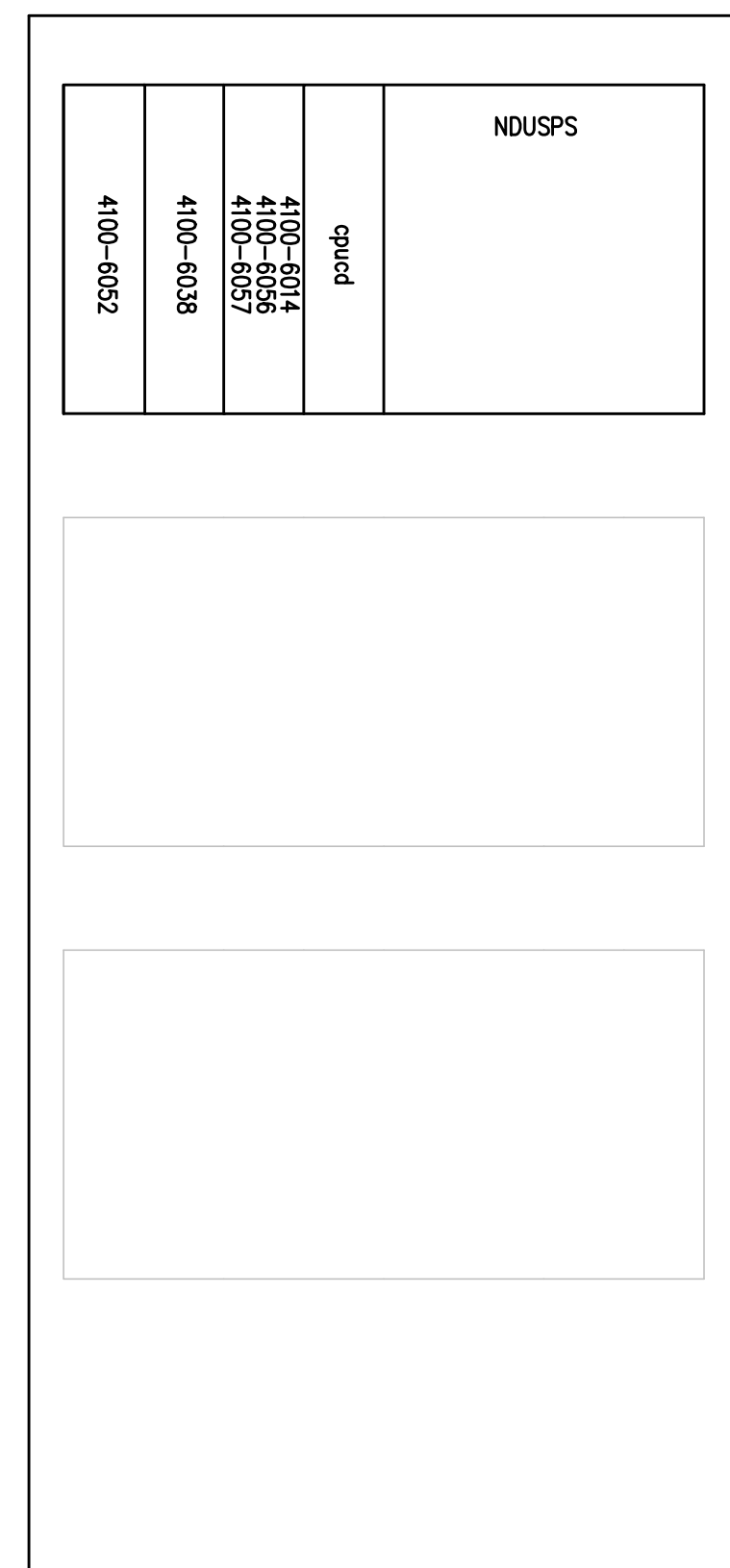
- ELECTRICAL CONTRACTOR IS RESPONSIBLE FOR PROVIDING JOHNSON CONTROLS WITH ACCURATE REDLINED DRAWINGS. DRAWINGS SHALL BE REDLINED AS NECESSARY TO SHOW THE FOLLOWING:
 - DEVICE LOCATIONS - ADDS/DELETES.
 - CIRCUIT NUMBERS - ADDRESSABLE/SIGNAL/AUXILIARY/ZONE.
 - WIRE/CONDUIT - ACCURATE ROUTING.
 - WIRE FILL - USING WIRE CODE.
 - EOL RESISTOR LOCATIONS.
- JOHNSON CONTROLS WILL PROVIDE (UPON REQUEST) A BLANK SET OF FLOOR PLANS TO BE REDLINED. JOHNSON CONTROLS WILL INCORPORATE ALL REDLINED CHANGES INTO THE RECORD AUTOCAD SET OF DRAWINGS.



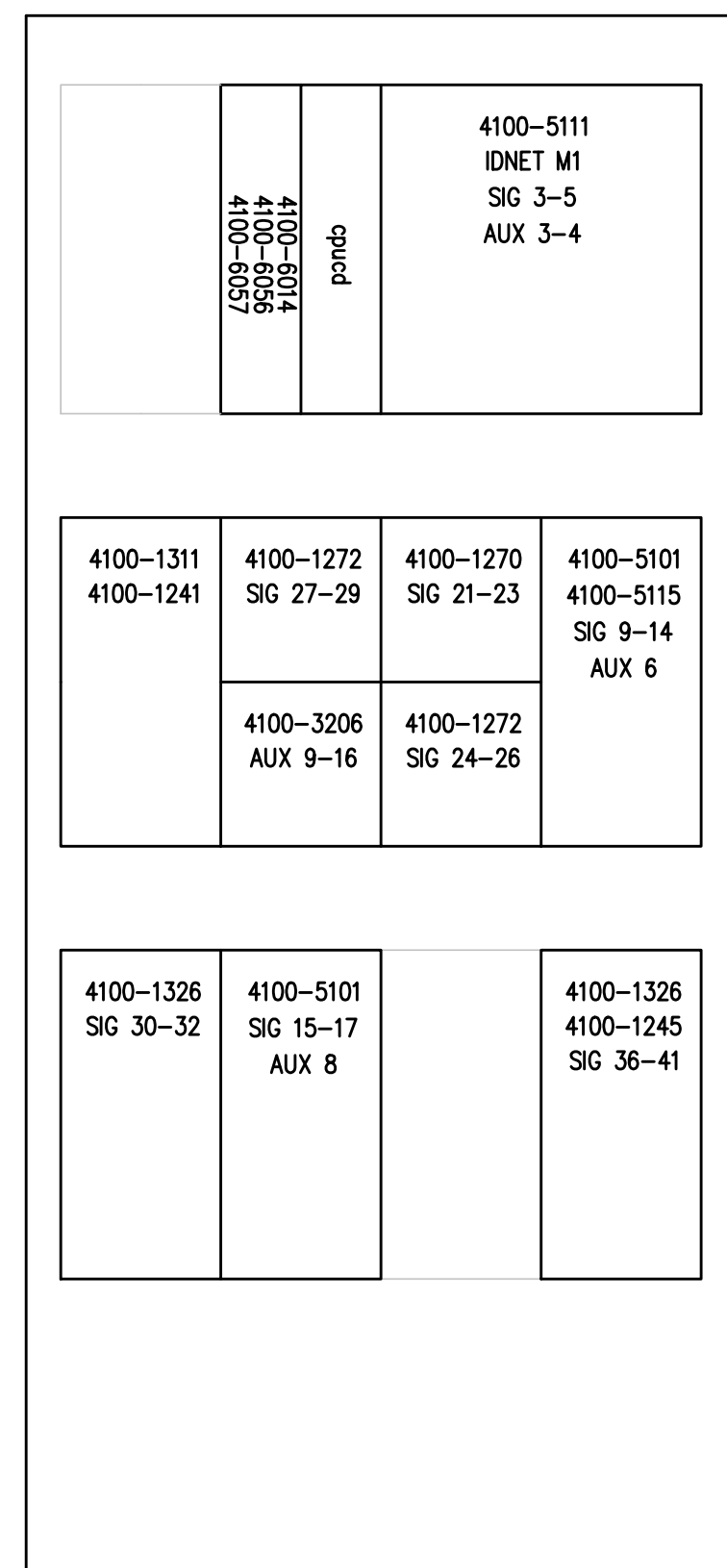
Supervisory Smoke Detectors

IDNET	Description
N9:M2-177	MT - LVL A STAFF BREAK MA42
N7:M1-125	MT - LVL 1 CLEAN UTILITY/NOURISH M138.1
N7:M1-137	MT - LVL 1 STAFF LOCKERS M184
N7:M1-138	MT - LVL 1 STAFF BREAK/COATS M183
N7:M2-64	MT - LVL 2 OR 6 M287 EAST
N7:M2-65	MT - LVL 2 OR 6 M287 WEST
N7:M2-67	MT - LVL 2 OR 6 M288 EAST
N7:M2-68	MT - LVL 2 OR 6 M288 WEST
N7:M2-73	MT - LVL 2 OR 4 M281 EAST
N7:M2-74	MT - LVL 2 OR 4 M281 WEST
N7:M2-76	MT - LVL 2 OR 3 M282 EAST
N7:M2-77	MT - LVL 2 OR 3 M282 WEST
N7:M2-83	MT - LVL 2 OR 2 M283 WEST
N7:M2-84	MT - LVL 2 OR 2 M283 EAST
N7:M2-91	MT - LVL 2 OR 1 M284 WEST
N7:M2-92	MT - LVL 2 OR 1 M284 EAST
N7:M2-177	MT - LVL 2 BREAKROOM M255
N7:M2-178	MT - LVL 2 BREAKROOM M253
N7:M2-183	MT - LVL 3 CLEAN UTILITY M234.2
N7:M3-33	MT - LVL 3 INTER RADIOLOGY 1 M336 SE
N7:M3-34	MT - LVL 3 INTER RADIOLOGY 1 M336 NW
N7:M3-36	MT - LVL 3 INTER RADIOLOGY 2 M337 SE
N7:M3-37	MT - LVL 3 INTER RADIOLOGY 2 M337 NW
N7:M3-40	MT - LVL 3 CATH 1 M333 NW
N7:M3-41	MT - LVL 3 CATH 1 M333 SE
N7:M3-44	MT - LVL 3 CATH2 M332 SW
N7:M3-45	MT - LVL 3 CATH2 M332 NE
N7:M3-51	MT - LVL 3. NOURISHMENT M331.4
N7:M3-76	MT - LVL 3 MRI 365 S
N7:M3-77	MT - LVL 3 MRI 365 S
N7:M3-81	MT - LVL 3 MRI TRANSFER M365.1
N7:M3-164	MT - LVL 3 CONFERENCE M358
N7:M3-179	MT - LVL 3 LOCKERS M392
N7:M3-180	MT - LVL 3 BREAKROOM M325
N7:M3-184	MT - LVL 3 CLEAN UTILITY M374.2
N7:M3-186	MT - LVL 3 CLEAN UTILITY M371
N7:M3-190	MT - LVL 3 CONFERENCE M308.1
N7:M3-193	MT - LVL 3 BREAKROOM M334.7
N7:M3-209	MT - LVL 3 CT-2 M362
N8:M2-36	MT - LVL 5 FOOD PANTRY/NOURISH M587
N8:M2-78	MT - LVL 5 FOOD PANTRY/NOURISH M577
N8:M2-91	MT - LVL 5 STAFF BREAK M557
N8:M2-93	MT - LVL 5 CONFERENCE M556
N8:M3-36	MT - LVL 6 FOOD PANTRY/NOURISH M662
N8:M3-71	MT - LVL 6 FOOD PANTRY/NOURISH M655
N8:M3-91	MT - LVL 6 STAFF BREAK M680
N8:M3-93	MT - LVL 6 CONFERENCE M658

NDU N6 - LEVEL 1



FACP N7 - LEVEL 1



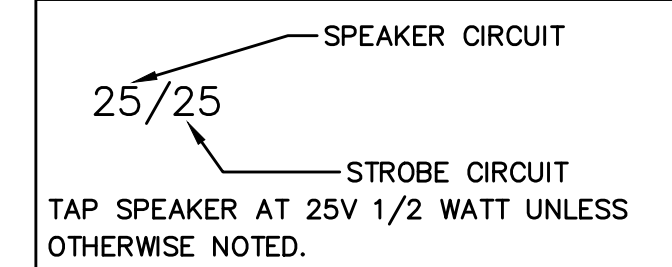
Symbol	Description	Part #	Backbox
[Symbol]	Multicandela Wall Speaker/Strobe - White	4906-9153	5" sq 2.875" deep w/ ext ring 4"sq adapter by EC
[Symbol]	Multicandela Ceiling Speaker/Strobe - White	4906-9154	5" sq 2.875" deep w/ ext ring 4"sq adapter by EC
[Symbol]	Multicandela Wall Strobe - White	4906-9103	4" sq by EC
[Symbol]	Multicandela Ceiling Strobe - White	4906-9102	4" sq by EC
[Symbol]	Wall Speaker - White	4902-9717	5" sq 2.875" deep w/ ext ring 4"sq adapter by EC
[Symbol]	Ceiling Speaker - White	4902-9721	5" sq 2.875" deep w/ ext ring 4"sq adapter by EC
[Symbol]	Addressable Manual Station	4099-9003 w/ ST11100 Cover	4" sq 2 1/8" deep w/ sg ring by EC
[Symbol]	Addressable Manual Station Suppression	4099-9015 w/ 4099-9802 Label Kit	4" sq 2 1/8" deep w/ sg ring by EC
[Symbol]	TrueAlarm Smoke Sensor	4098-9714 w/ 4098-9792 Base	4" od by EC
[Symbol]	TrueAlarm Heat Sensor	4098-9733 w/ 4098-9792 Base	4" od by EC
[Symbol]	Heat Detector - 135FT	ED-2638-PL	4" od by EC
[Symbol]	TrueAlarm Duct Address and sampling tube size	4098-9756	self-contained
[Symbol]	Remote LED w/Test	2098-9806	sg by EC
[Symbol]	Duct Detector Relay	4098-9843	4"sq w/sg & cover by EC
[Symbol]	Beam Smoke Detector - Transmitter	BEAM1224	Surface Box w/BEAMSK Surface
[Symbol]	Beam Smoke Detector - Reflector	4090-9101	4"sq 2 1/8" deep w/ 2-gang cover by EC
[Symbol]	Supervised IAM	4090-9001	4"sq w/sg & cover by EC
[Symbol]	Flow Switch	By Others	By Others
[Symbol]	Pressure Switch	By Others	By Others
[Symbol]	Low Air Switch	By Others	By Others
[Symbol]	Tamper Switch	By Others	By Others
[Symbol]	Post Indicator Valve	By Others	By Others
[Symbol]	Col Supervision Module	2081-9046	By Others
[Symbol]	Pre-Action Solenoid	By Others	By Others
[Symbol]	Door Holders	By Others	By Others
[Symbol]	Suppression Mech. Disconnect	2080-9060	Included
[Symbol]	Relay IAM	4090-9002	4"sq 2 1/8" deep w/ 2-gang cover by EC
[Symbol]	Monitor ZAM	2088-9008	self-contained
[Symbol]	Remote Relay	2084-9001	sg by EC
[Symbol]	FFT Cabinet	2084-9026 w/ (10) 2084-9024 handsets	23.5"H x 23.5"W x 4.0"D
[Symbol]	Smoke Control Panel	CEFL-L-GR-GP6	41"H x 29"W x 4.75"D
[Symbol]	Suppression Releasing Peripheral	4090-9006	8.125"H x 6.125"W x 4"D Surface Mount
[Symbol]	Printer	4190-9013	Table Top
[Symbol]	LCD Annunciator	4603-9101	6-gang 3.5"deep by EC or RSA-WP-SA
[Symbol]	Terminal Cabinet	SSU00661	13"H x 23.5"W x 5.5"D
[Symbol]	Transponder Panel	4100-9601	56"H x 24"W x 8.375"D 2975-9432
[Symbol]	Fire Alarm Control Panel	4100-9114	56"H x 24"W x 8.375"D 2975-9426
[Symbol]	Network Display Unit	4100-9151	56"H x 24"W x 8.375"D 2975-9428
[Symbol]	4007E Pre-Action Panel	4007-9101	16.25"H x 13.5"W x 5.75"D

Wire Code

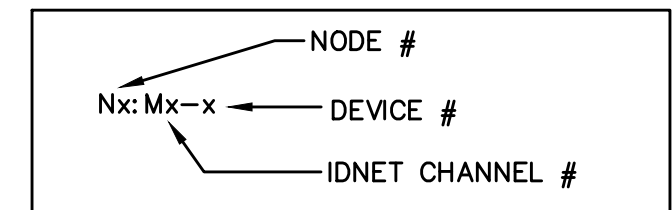
Letter	Qty	Color/Type	Size	Function
A	2	Black/Orange TFN	16	Zone
C	2	Red/Blue THHN	14	Horn/Strobe
D	4	(2) Red/2) Blue THHN	14	Horn/Strobe Loop
E	2	Brown/Yellow THHN	14	Door Holders
F	2	Orange THHN	14	Fan Shutdown
H	1	WestPerm D975	18	Serial Communication
J	1	Red/Black THHN	14	Speaker
K	2	WestPerm 991	16	Speaker Loop
L	1	WestPerm 5220FZ	16	Local Network Connection**
M	1	WestPerm 5220FZ	16	Miniplex Transponder**
N	2	WestPerm D975	18	Network Connection
P	2	Red/Black THHN	14	24VDC Power
R	2	Blue/White TFN	16	Remote LED w/Test
T	2	Pink TFN	16	Fire Fighter Telephone
V	1	WestPerm D977	18	Printer
X	1	WestPerm D975	18	Addressable Data Line

** 2-hr cable for survivability

STROBE AND SPEAKER IDENTIFICATION



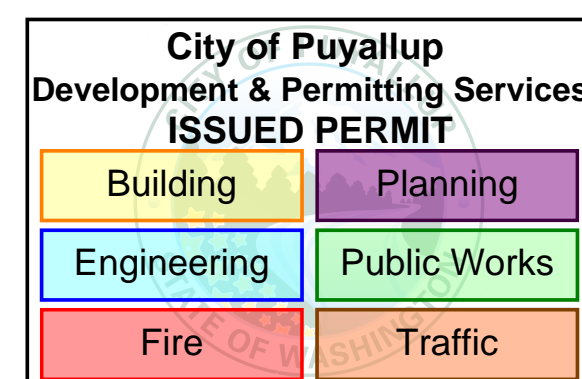
ADDRESSABLE DETECTOR IDENTIFICATION



JOHNSON CONTROLS
12781 Gateway Drive
Tukwila, WA 98188
SALES: 206-291-1400
SERVICE: 206-291-1400

PROJECT #	
-----------	--

Sequence of Operation	Manual Station	Smoke Detection	Supervisory Smoke Detection*	Beam Smoke Detection	Corridor Smoke Detection	Anesthetizing Area Smoke Detection	IDF Room Smoke Detection	Primary Recall Elevator Lobbies Smoke Detection	Elev Lobbies Except Primary Recall Smoke Detection	Elevator Mach Rm/Shaft Smoke Detection	Elevator Power Monitor	Duct Smoke Detection Supply Air Handler	Duct Smoke Detection Exhaust Air Handler	Duct Smoke Detection Supply Smoke/Fire Damper	Duct Smoke Detection Exhaust Smoke/Fire Damper	Heat Detection	Clean Agent System Control Panel	Flow Switch	Pressure Switch	High/Low Air Switch	Tamper Switch	Fire Pump	System Trouble	Pre-Action Alarm	Pre-Action Supervisory	Pre-Action Trouble
Activation of Local Alarm at FACP (LCD Display & Audible Indication)	X	X		X	X		X	X	X	X						X	X	X	X					X		
Activation of Local Alarm at Annunciator	X	X		X	X		X	X	X	X						X	X	X	X					X		
Activate Visible Devices Alarm Floor	X	X		X	X		X	X	X	X						X	X	X	X					X		
Activate Audible Devices Alarm Floor/Floor Above/Floor Below	X	X		X	X		X	X	X	X						X	X	X	X					X		
Release Door Holders Within Smoke Zone	X	X		X	X		X	X	X	X						X	X	X	X					X		
Release Door Holders Floor of Alarm	X																							X		
Release Elevator Door Smoke Curtains Local Detection Only		X		X	X		X										X									
Release Stair Door Locks Floor of Alarm	X	X		X	X		X	X	X	X						X	X	X	X					X		
Close Corridor Smoke/Fire Dampers Within Smoke Zone					X																					
Close Smoke/Fire Dampers at Duct Det.														X	X											
Maintain Smoke/Fire Dampers in Anesthetizing Area Ducts in Open Position																										
Shutdown AHU and SAHU Supply Fan												X														
Shutdown EAHU Exhaust Fan													X													
Send Signal to DDC for Shutdown of Associated AHU, SAHU and EAHU Fans												X	X	X	X											
Send Signal to DDC System					X		X					X	X	X	X		X									
Send Signal to DDC System For Smoke Removal Mode																										
Activate Stair Pressurization Fans	X	X		X	X			X	X	X						X	X	X						X		
Open Elevator Hoistway Vent Dampers								X	X	X																
Initiate Primary Elevator Recall								X	X	X																
Initiate Alternate Elevator Recall								X																		
Activate Elevator Hat Light										X																
Transmit Alarm Signal To Central Station Monitor	X	X		X	X		X	X	X	X						X	X	X	X					X		
Trouble Indication at FACP																							X			X
Trouble Indication at Annunciator																							X			X
Transmit Trouble Signal To Central Station Monitor																							X			X
Supv Indication at FACP			X			X					X	X	X	X	X						X	X	X		X	
Supv Indication at Annunciator			X			X					X	X	X	X	X						X	X	X		X	
Transmit Supv Signal To Central Station Monitor			X			X					X	X	X	X	X						X	X	X		X	



PROJECT #	610318224
ENGINEER	EQB
DRAWER	EQB
REVISION	DESCRIPTION
9/20/19	DAILY PHARMACY RECORD DRAWINGS
9/21/22	EGRESS DOORS
4/12/23	MRI PRE-ACTION PANEL UPGRADE
9/12/23	MRI PRE-ACTION PANEL UPGRADE - RECORD DRAWING
1/24/24	CSH ED. PAST TRACK REMODEL

DRAWINGS REVIEWED BY:
Eric Beck, CET
NCEI #22884
Fire Alarm Systems, Level III

FIRE ALARM SYSTEM
COVER SHEET
GOOD SAMARITAN - PATIENT CARE TOWER
401 15TH AVENUE SE
PUYALLUP, WA 98371

APPROVED BY:
C. McCAMMON
DRAWN BY:
C. McCAMMON
DATE:
8/12/09
SITE/PROJECT NUMBER:
458413141/943123501

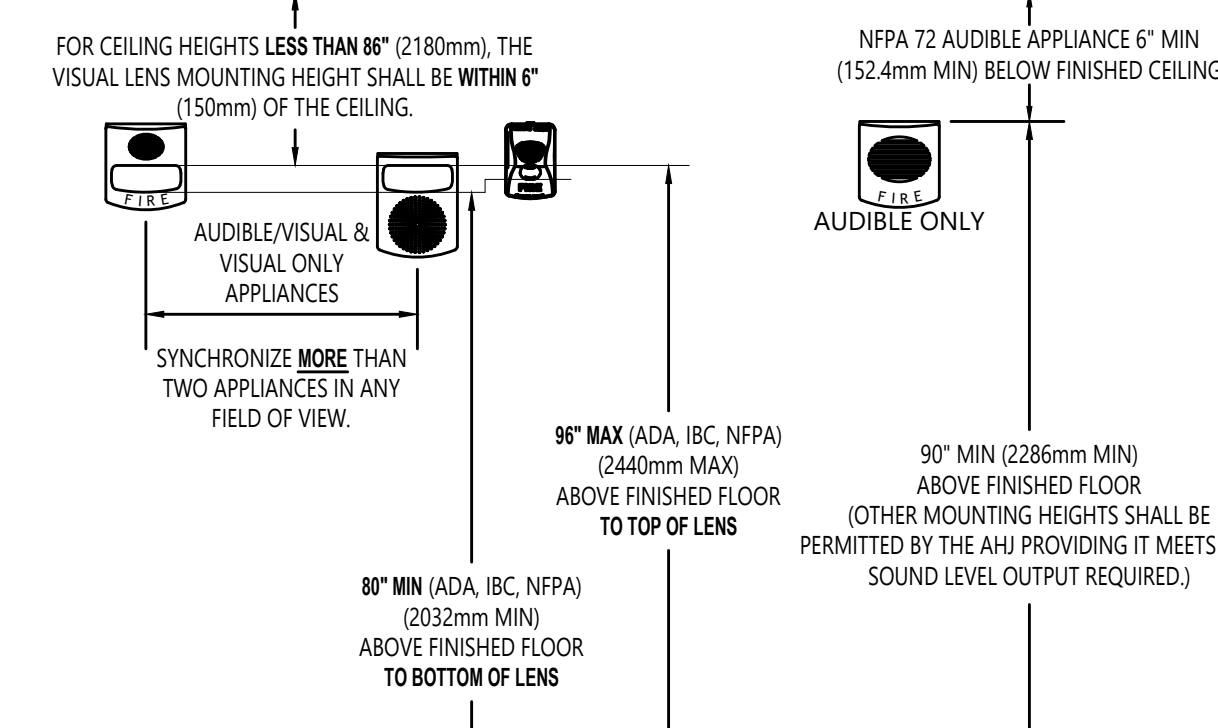
SHEET NUMBER:
FA-COV-02.1

ELECTRONIC DRAWING NAME
FA-COVER

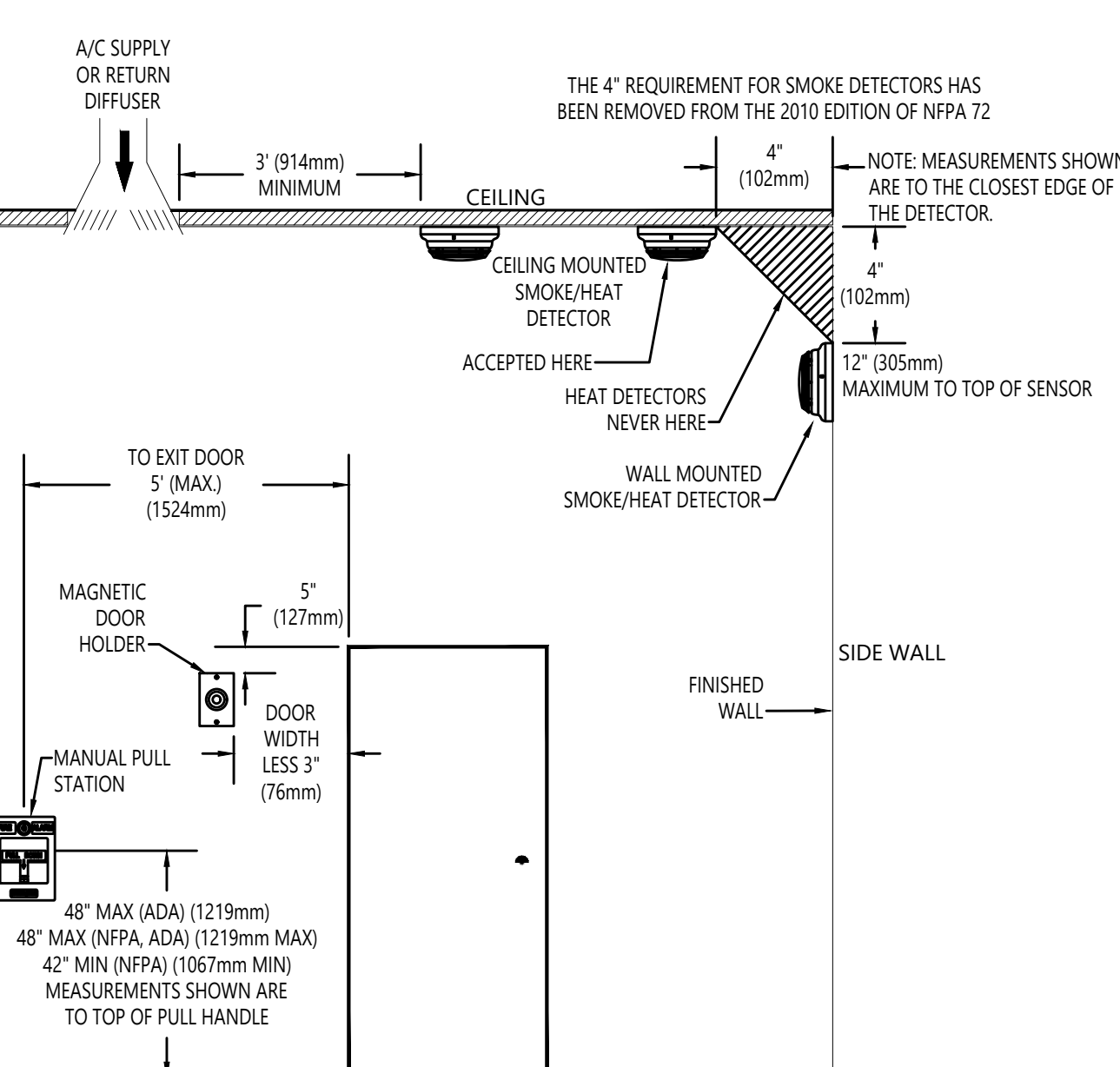
DEVICE MOUNTING HEIGHT REFERENCE

PER NFPA 72

- VISUAL APPLIANCE MOUNTING HEIGHT CONSIDERATIONS IN SLEEPING ROOMS**
- MIN DISTANCE IN SLEEPING ROOMS IS 24" (610mm) FROM CEILING TO TOP OF LENS FOR 177CD STROBES WITHIN 16' OF THE FLOOR.
 - 177CD STROBES USED IN SLEEPING ROOMS CAN BE WITHIN THE 24" (610mm) MINIMUM DISTANCE FROM THE CEILING. THE HIGHER INTENSITY IS TO COMPENSATE FOR A POSSIBLE SMOKE LAYER.

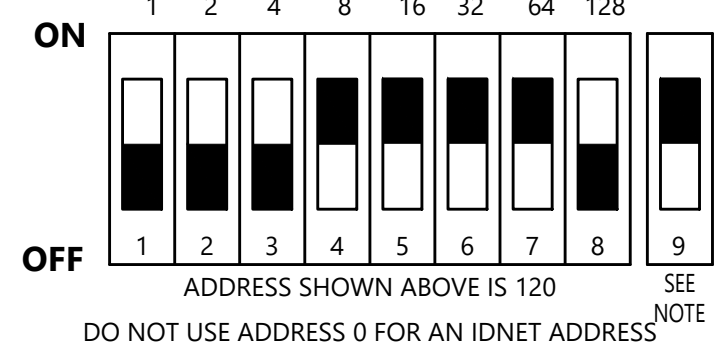


NOTE: REFER TO THE PROPER DEVICE INSTALLATION INSTRUCTIONS FOR BACKBOX MOUNTING HEIGHT.



DIP SWITCH SETTINGS - INITIATING

SIMPLEX IDNet



DIP SWITCHES 1 THRU 4	0	16	32	48	64	80	96	112	128	144	160	176	192	208	224	240
DIP SWITCHES 5 THRU 8	1	17	33	49	65	81	97	113	129	145	161	177	193	209	225	241
DIP SWITCHES 9 THRU 12	2	18	34	50	66	82	98	114	130	146	162	178	194	210	226	242
DIP SWITCHES 13 THRU 16	3	19	35	51	67	83	99	115	131	147	163	179	195	211	227	243
DIP SWITCHES 17 THRU 20	4	20	36	52	68	84	100	116	132	148	164	180	196	212	228	244
DIP SWITCHES 21 THRU 24	5	21	37	53	69	85	101	117	133	149	165	181	197	213	229	245
DIP SWITCHES 25 THRU 28	6	22	38	54	70	86	102	118	134	150	166	182	198	214	230	246
DIP SWITCHES 29 THRU 32	7	23	39	55	71	87	103	119	135	151	167	183	199	215	231	247
DIP SWITCHES 33 THRU 36	8	24	40	56	72	88	104	120	136	152	168	184	200	216	232	248
DIP SWITCHES 37 THRU 40	9	25	41	57	73	89	105	121	137	153	169	185	201	217	233	249
DIP SWITCHES 41 THRU 44	10	26	42	58	74	90	106	122	138	154	170	186	202	218	234	250
DIP SWITCHES 45 THRU 48	11	27	43	59	75	91	107	123	139	155	171	187	203	219	235	251
DIP SWITCHES 49 THRU 52	12	28	44	60	76	92	108	124	140	156	172	188	204	220	236	252
DIP SWITCHES 53 THRU 56	13	29	45	61	77	93	109	125	141	157	173	189	205	221	237	253
DIP SWITCHES 57 THRU 60	14	30	46	62	78	94	110	126	142	158	174	190	206	222	238	254
DIP SWITCHES 61 THRU 64	15	31	47	63	79	95	111	127	143	159	175	191	207	223	239	255

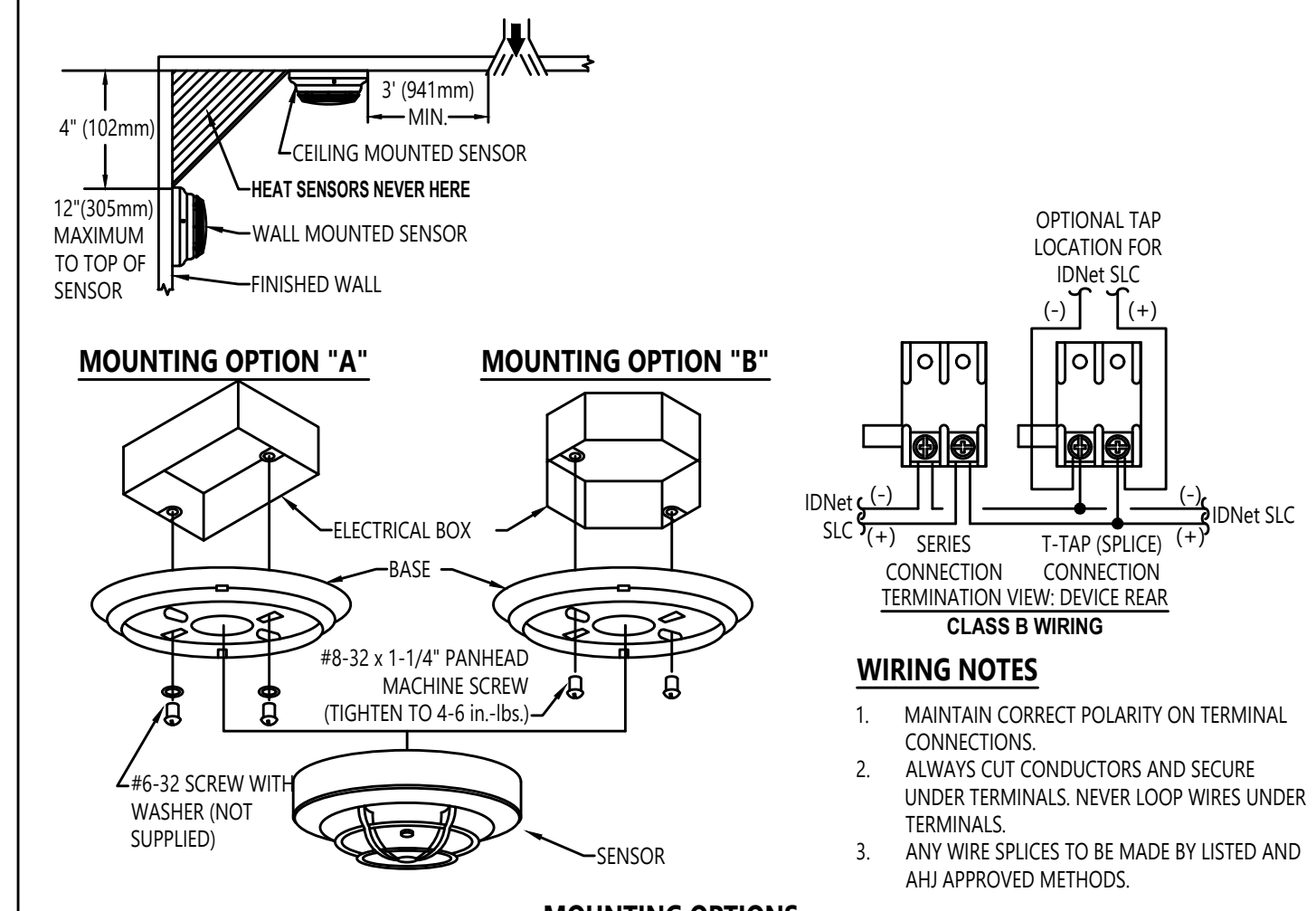
NOTE: THE 4096-9771, -9794, -9795, -9798 SOUNDER BASES HAVE A POSITION DIP SWITCH. THE FIRST EIGHT DIP SWITCHES SET THE SOUNDER BASE ADDRESS. DIP SWITCH POSITION 9 IS SET TO OFF OR ON DEPENDING UPON THE SOUNDER BASE POWER SOURCE. WHEN THE SOUNDER BASE IS CONNECTED TO A 24 VDC POWER SOURCE, DIP SWITCH POSITION 9 IS SET TO 'OFF' AND THE 24 VDC POWER IS SUPERVISED BY THE SOUNDER BASE. WHEN THE SOUNDER BASE IS POWERED BY THE PANEL'S NOTIFICATION APPLIANCE CIRCUIT (NAC), DIP SWITCH POSITION 9 IS SET TO 'ON' AND THE POWER IS SUPERVISED BY THE NAC AND NOT THE SOUNDER BASE. THE 4096-9770 AND -9797 BASES HAVE THE SAME LAYOUT, BUT DOESN'T OFFER SOUNDER FUNCTIONALITY. THEY USE AN 8-WAY DIP SWITCH ONLY.

END OF LINE RESISTOR CODES

MODEL NUMBER	REF. NUMBER	Ω	BAND NUMBER	WATTS	CIRCUIT TYPE	FIRE ALARM PANEL/MODULE
4081-9001	733-892	2.2K	RED RED	GLD N/A	1/2"	ANNUNCIATOR (EQU)
4081-9002	733-893	3.3K	ORG ORG	RED GLD	N/A	1
4081-9003	733-896	4.7K	YEL VT	RED GLD	N/A	1/2"
4081-9004	733-886	6.8K	BLU GRN	RED GLD	N/A	1/2"
4081-9005	733-884	1.8K	BRN GRN	RED GLD	N/A	1/2"
4081-9006	733-890	560	GRN BLU	BRN GLD	N/A	1
4081-9007	733-891	1.2K	BRN RED	RED GLD	N/A	1
4081-9008	733-894	10K	BRN BLK	ORG GLD	N/A	1/2"
4081-9009	733-912	20	RED BLK	BLK GLD	N/A	1
4081-9010	733-973	1K	BRN BLK	RED GLD	N/A	1
4081-9011	733-974	100	BRN BLK	BRN GLD	N/A	1/2"
4081-9012	733-985	22K	RED RED	ORG GLD	N/A	1/2"
4081-9013	734-086	4.99K	YEL WHT	WHT BRN	1/2"	
4081-9014	734-092	2.4K	RED YEL	RED GLD	N/A	1/2"
4081-9015	734-093	1.5K	BRN GRN	RED GLD	N/A	1/2"
4081-9016	734-149	150K	BRN GRN	YEL GLD	N/A	1/2"
4081-9017	734-171	3.9K	ORG WHT	RED GLD	N/A	1
4081-9018	734-168	10K	BRN BLK	ORG GLD	N/A	1
4081-9019	378-090	3.2K	GRN RED	RED GLD	N/A	1/2"
4081-9020	378-046	5.6K	GRN BLU	RED GLD	N/A	1/2"
4081-9021	378-069	1.2K	BRN RED	ORG GLD	N/A	1/2"

STANDARD SENSOR BASE

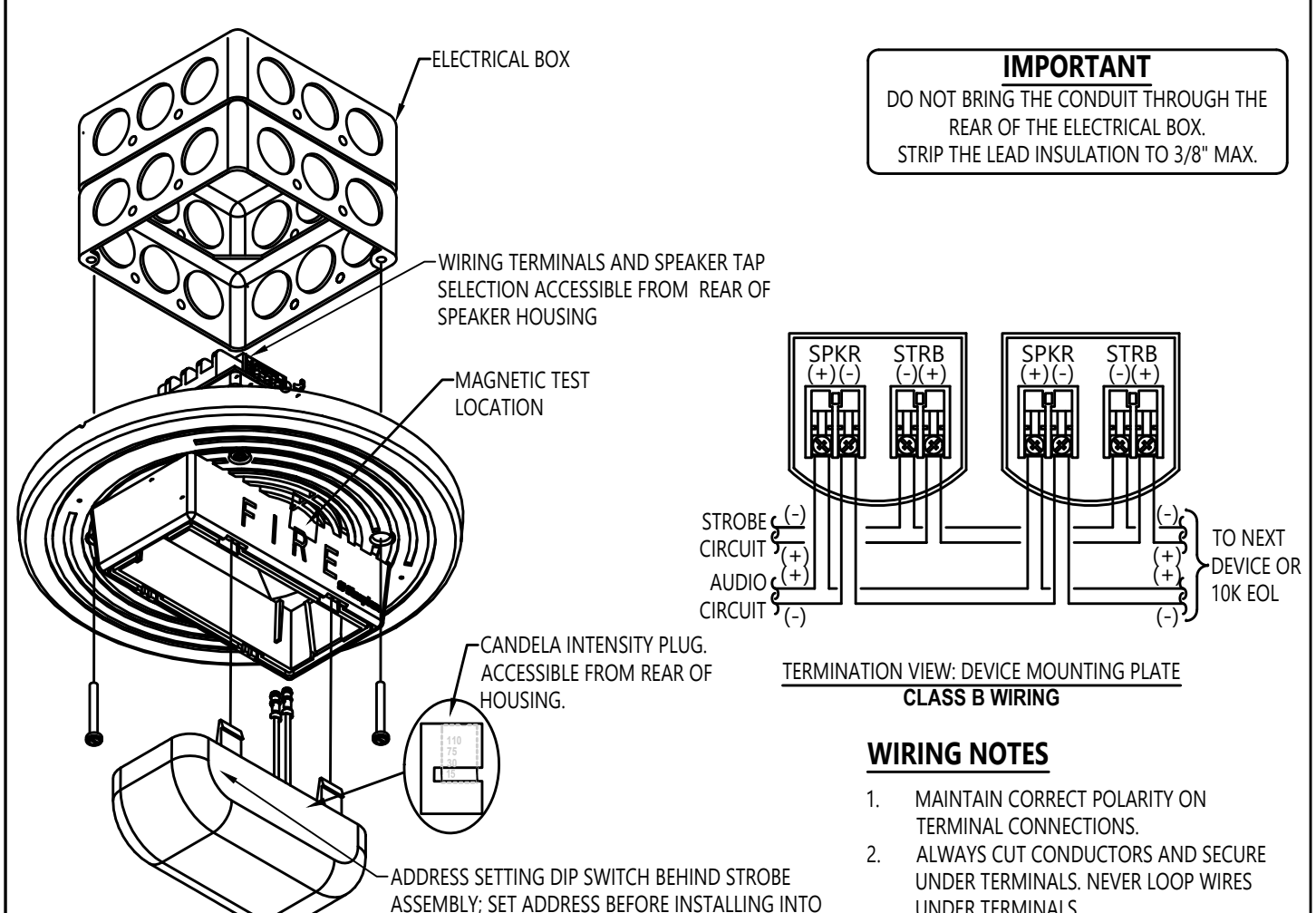
SIMPLEX 4096-9792



OPTION	DESCRIPTION	NOTE
A	SINGLE GANG BOX, 2-1/8" (54mm) DEEP - FLUSH MOUNT	BY OTHERS
B	4" (102mm) OCTAGONAL BOX, 1-1/2" (38mm) DEEP - MINIMUM - FLUSH MOUNT	BY OTHERS
C	4" (102mm) SQUARE BOX, 1-1/2" DEEP (MIN) W/ SIMPLEX 4096-9832 ADAPTER KIT	BOX BY OTHERS, 4096-9832 ORDERED SEPARATELY
D	4" (102mm) SQUARE BOX, 1-1/2" DEEP (MIN) W/ SINGLE GANG COVER PLATE 3/4" (19mm) EXTENSION	BY OTHERS

TrueAlert CONVENTIONAL APPLIANCES

SIMPLEX 4096 SERIES CEILING MOUNTED SPEAKER / VISUAL



OPTION	DESCRIPTION	NOTE
A	4" (102mm) SQUARE BOX, 1-1/2" (38mm) DEEP, WITH 1-1/2" (38mm) EXTENSION RING - FLUSH MOUNTING	BY OTHERS

City of Puyallup
Development & Permitting Services
ISSUED PERMIT

Building	Planning
Engineering	Public Works
Fire	Traffic



REVISION	DESCRIPTION	DATE	NO.
1	DAILY PHARMACY RECORD DRAWING	9/20/19	47
2	EGRESS DOORS	9/21/22	48
3	MET PRE-ACTION PANEL UPGRADE	4/12/23	49
4	MET PRE-ACTION PANEL UPGRADE - RECORD DRAWING	9/12/23	
5	CSH BD, PAST TRACK, REMODEL	1/24/24	

DRAWINGS REVIEWED BY:
Eric Beck, CET
NICKET #228884
Fire Alarm Systems, Level III

FIRE ALARM SYSTEM
DETAIL SHEET (T.I.)
GOOD SAMARITAN - PATIENT CARE TOWER
401 15TH AVENUE SE
PUYALLUP, WA 98371

APPROVED BY:
C. McCAMMON
DRAWN BY:
C. McCAMMON
DATE:
8/12/09
SITE/PROJECT NUMBER:
458413141/943123501

SHEET NUMBER:
FA-DET-02

FA-COVER

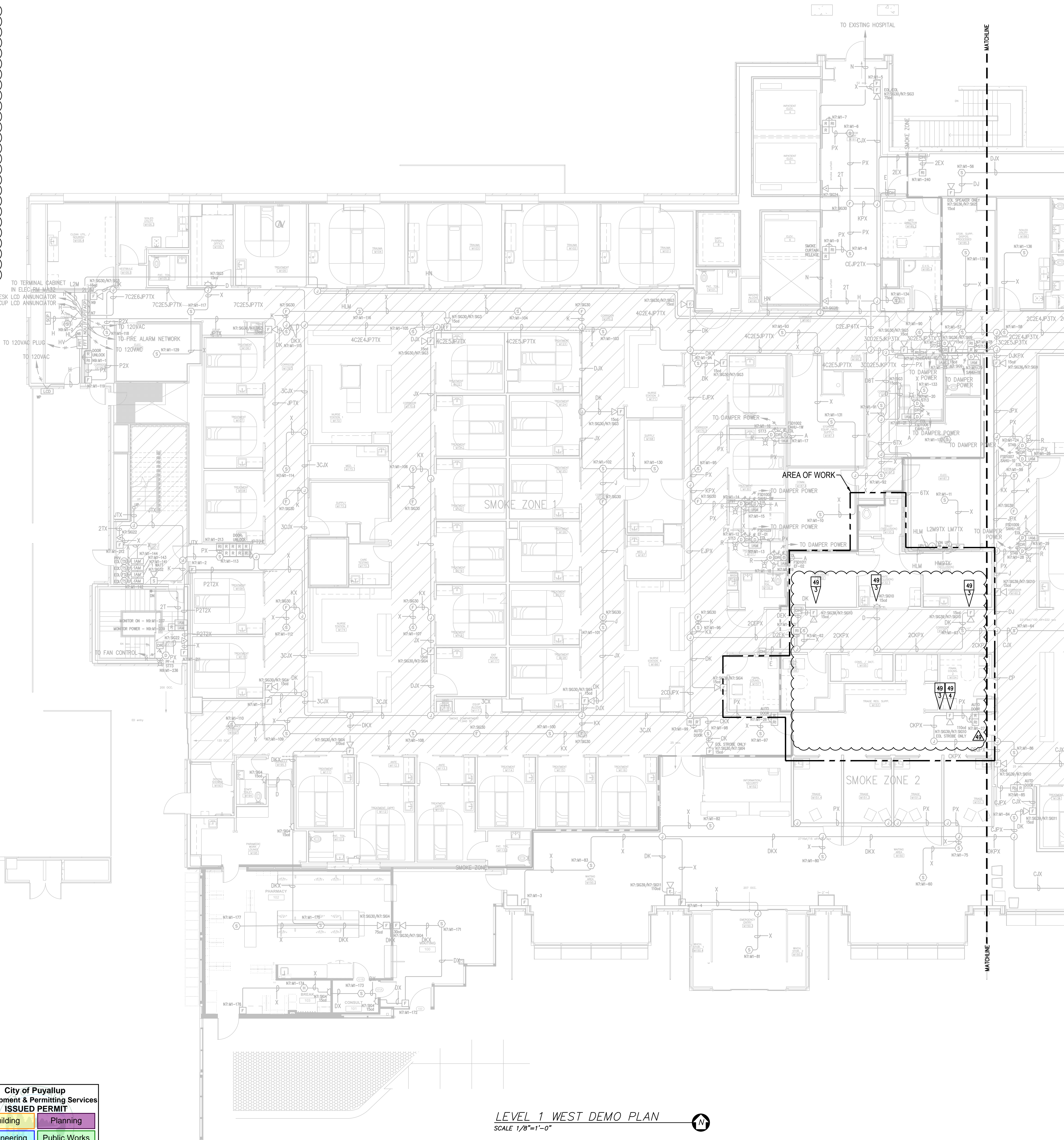
© 2017 SIMPLEX-FIRE.COM
ALL RIGHTS RESERVED.

GENERAL NOTES:

- EXISTING INFORMATION IS SHOWN LIGHT AND BASED ON INFORMATION PROVIDED BY OTHERS. FIELD VERIFY ALL EXISTING EQUIPMENT AND CONNECTIONS AS NEEDED.
- TAP ALL SPEAKERS AT 1/2W. 25wms. FIELD VERIFY VOLTAGE.
- CONTRACTOR TO REDLINE AND NOTE ANY AND ALL CHANGES ON RECORD DRAWING PLANS.

REVISION 49 FLAG NOTES:

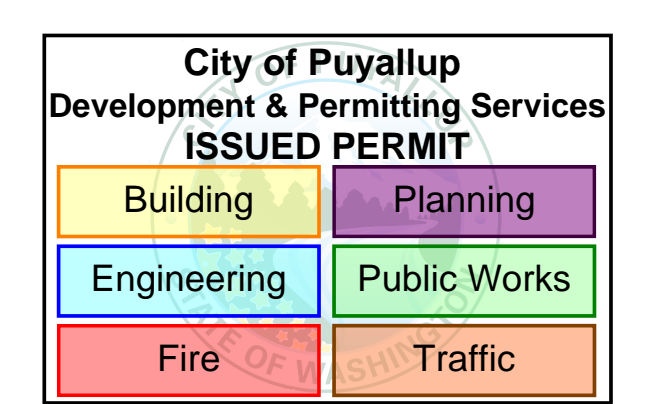
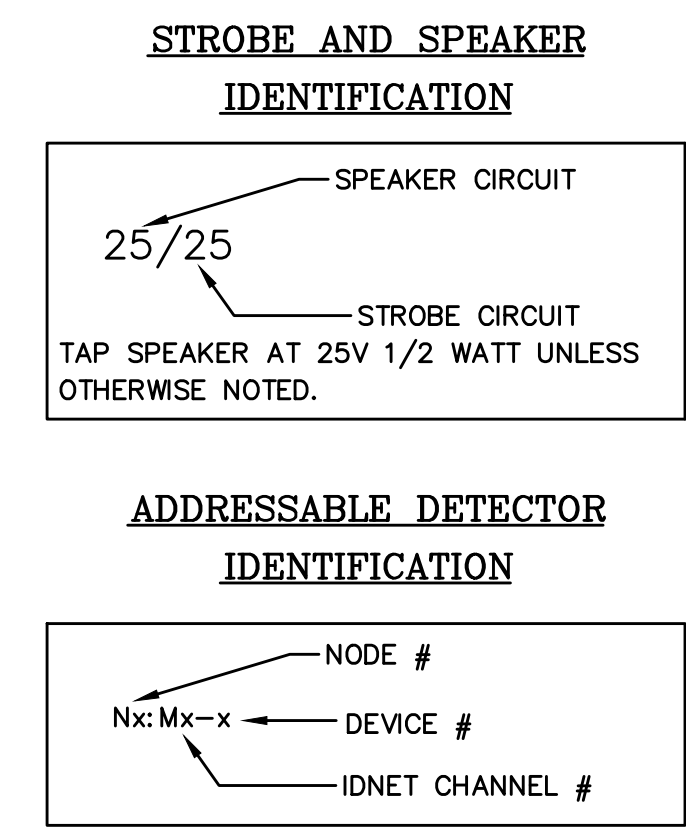
- EXISTING DEVICE TO BE REMOVED AND SAVED FOR RELOCATION AS NECESSARY. REMOVE UNNEEDED ASSOCIATED WIRING AND MAINTAIN CIRCUIT INTEGRITY. RELOCATE ANY E.O.L. RESISTORS AS NEEDED. SEE FA-LEV1-W FOR ADDITIONAL CIRCUIT INFORMATION.
- REINSTALL EXISTING DEVICE IN THIS LOCATION. SET CANDELA AND OR DEVICE ADDRESS AS SHOWN. FIELD VERIFY ANY CONNECTIONS TO EXISTING CIRCUITS.
- DEVICES TO BE REMOVED AND RETURNED TO OWNER FOR DISPOSAL. REMOVE UNNEEDED ASSOCIATED WIRING AND MAINTAIN CIRCUIT INTEGRITY.
- EXISTING CIRCUIT END OF LINE RESISTOR TO BE REMOVED FROM THIS LOCATION AND REINSTALLED TO LOCATION SHOWN ON FLOOR PLAN SHEET. MAINTAIN CIRCUIT INTEGRITY DURING DEMO PHASE.
- RELOCATE END OF LINE RESISTOR TO THIS LOCATION.




Symbol	Description	Part #	Backbox
DX	Multicandela Wall Speaker/Strobe - White	4006-9153	5" sq 2.875" deep w/ ext ring 4" sq adapter by EC
DX	Multicandela Ceiling Speaker/Strobe - White	4006-9154	5" sq 2.875" deep w/ ext ring 4" sq adapter by EC
DX	Multicandela Wall Strobe - White	4006-9103	4" sq by EC
DX	Multicandela Ceiling Strobe - White	4006-9102	4" sq by EC
W	Wall Speaker - White	4002-9717	5" sq 2.875" deep w/ ext ring 4" sq adapter by EC
W	Ceiling Speaker - White	4002-9721	5" sq 2.875" deep w/ ext ring 4" sq adapter by EC
MA	Addressable Manual Station	4099-9003 w/ 311100 Cover	4" sq 2.187" deep w/ sq ring by EC
MA	Addressable Manual Station	4099-9015 w/ 4099-9002 Label Kit	4" sq 2.187" deep w/ sq ring by EC
SM	TruAlarm Smoke Sensor	4098-9714 w/ 4098-9792 Base	4" sq 2.187" deep w/ sq ring by EC
SM	TruAlarm Heat Sensor	4098-9713 w/ 4098-9792 Base	4" sq 2.187" deep w/ sq ring by EC
SM	Heat Detector - 139FT	4098-9792	4" sq 2.187" deep w/ sq ring by EC
SM	TruAlarm Duct Sensor	4098-9796	self-contained
SM	Remote LED w/Test	2088-8006	sq by EC
SM	Duct Detector Relay	4098-9843	4" sq wing & cover by EC
SM	Beam Smoke Detector - Transmitter	BEAM1234	Surface Box w/BEAMSMK Surface
SM	Beam Smoke Detector - Reflector	4099-9101	4" sq 2.187" deep w/ 2-gang cover by EC
SM	Supervised IAM	4096-9001	4" sq wing & cover by EC
SM	Flow Switch	By Others	By Others
SM	Pressure Switch	By Others	By Others
SM	Low Air Switch	By Others	By Others
SM	Temp Switch	By Others	By Others
SM	Post Indicator Valve	By Others	By Others
SM	Coil Supervision Module	2081-8046	By Others
SM	Pre-Action Solenoid	By Others	By Others
SM	Door Holders	By Others	Included
SM	Suppression Mech. Disconnect	2080-9000	Included
SM	Relay IAM	4096-9002	4" sq 2.187" deep w/ 2-gang cover by EC
SM	Remote Relay	2088-8008	self-contained
SM	FFT Jack	2084-9001	sq by EC
SM	FFT Cabinet	2088-9006 w/ 610-2084-9024 handles	23.5" x 23.5" x 4.0" D
SM	Smoke Control Panel	CEFA-GR-GP6	41" x 29" x 4.75" D
SM	Suppression Releasing Peripherals	4090-9006	5.125" x 6.125" x 4" D
SM	Printer	4190-9103	Table Top
SM	LCD Annunciator	4063-9101	6-gang 3.5" deep by EC or RSA-WP-SA 13" x 23.5" x 5.5" D
SM	Terminal Cabinet	35U0681	56" x 24" x 6.375" D
SM	Transponder Panel	4100-9114	56" x 24" x 6.375" D
SM	Fire Alarm Control Panel	4100-9114	56" x 24" x 6.375" D
SM	Network Display Unit	4100-9151	56" x 24" x 6.375" D
SM	400TES Pre-Action Panel	4007-9101	16.25" x 13.5" x 5.75" D

Letter	Qty	Color/Type	Size	Function
A	2	Black/Orange TFN	16	Zone
C	2	Red/Blue THHN	14	Horn/Strobe
D	4	(2) Red/2) Blue THHN	14	Horn/Strobe Loop
E	2	Brown/Yellow THHN	14	Door Holders
F	2	Orange THHN	14	Fan Shutdown
H	2	Red/Black THHN	18	Serial Communication
J	1	WestPenn 991	16	Speaker
K	2	WestPenn 991	16	Speaker Loop
L	1	WestPenn 5220FZ	16	Local Network Connection**
M	1	WestPenn 5220FZ	16	Miniplex Transponder**
N	1	WestPenn 5120UZ	14	Network Connection
P	2	Red/Black THHN	14	24VDC Power
R	2	Blue/White TFN	16	Remote LED w/Test
T	2	Pink TFN	16	Pin
V	1	WestPenn 991	16	Fire Fighter Telephone
X	1	WestPenn D975	18	Addressable Data Line

** 2-hr cable for survivability



LEVEL 1 WEST DEMO PLAN
SCALE 1/8"=1'-0"



12781 Greewy Drive
Tukwila, WA 98188
SALES: 206-291-1400
SERVICE: 206-291-1400

REVISION	DESCRIPTION	DATE	BY	CHECKED	DATE	BY	CHECKED
1	DAILY PHARMACY RECORD DRAWINGS	9/20/19	RSC		9/21/22	47	
2	EGRESS DOORS	9/21/22	DAP		4/12/23	48	
3	MFC PRE-ACTION PANEL UPGRADE	4/12/23	ARH		1/24/24	49	
4	MFC PRE-ACTION PANEL UPGRADE - RECORD DRAWING	9/12/23	ARH				
5	CSH ED. FAST TRACK REMODEL	1/24/24	MAH				

DRAWINGS REVIEWED BY:
Eric Beck, CET
NICK K228584
Fire Alarm Systems, Level III

**FIRE ALARM SYSTEM
LEVEL 1 WEST FLOOR PLAN
GOOD SAMARITAN - PATIENT CARE TOWER**

401 15TH AVENUE SE
PUYALLUP, WA 98371

APPROVED BY:
C. McCAMMON

DRAWN BY:
C. McCAMMON

DATE:
8/12/09

SITE/PROJECT NUMBER:
458413141/943123501

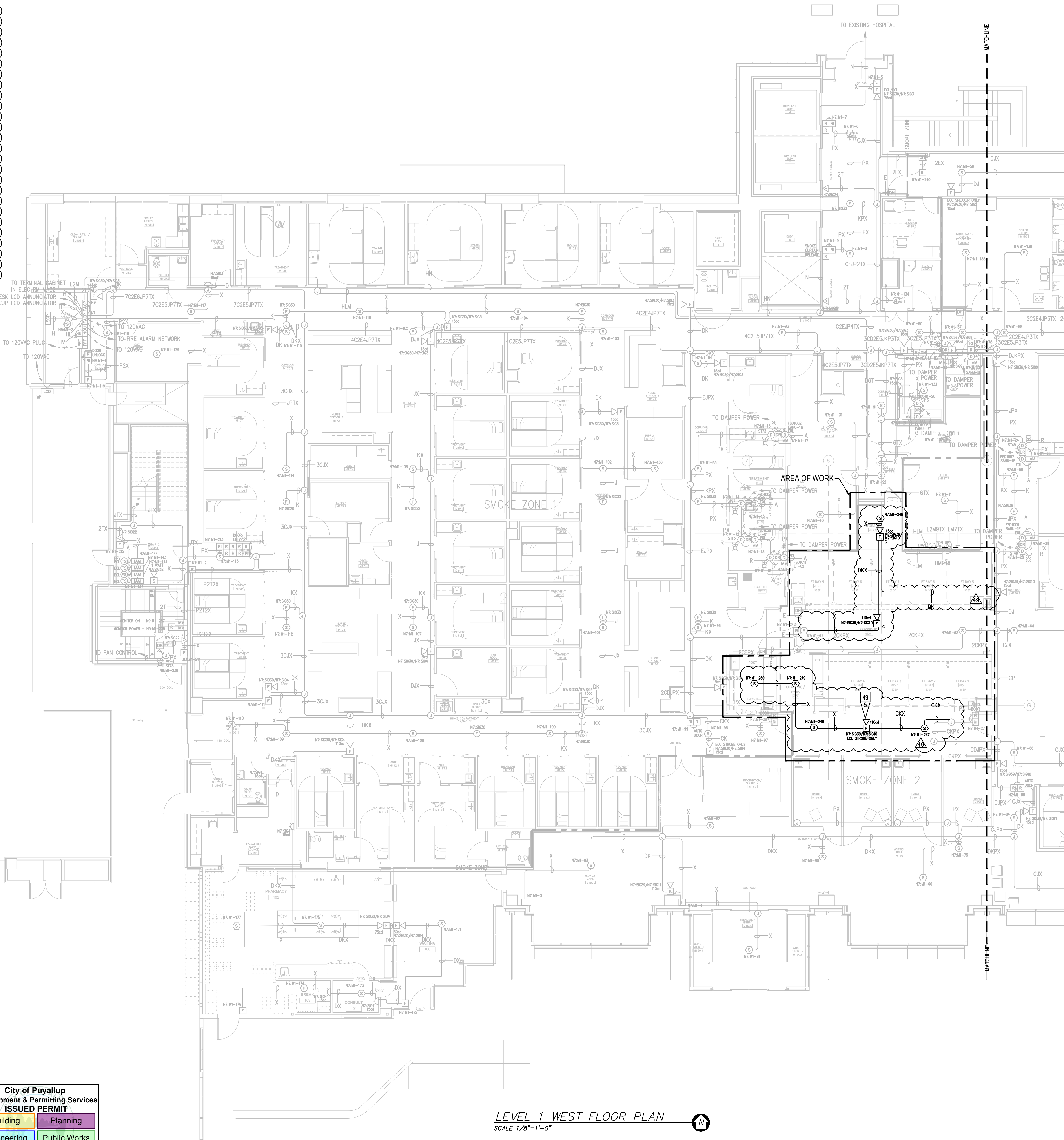
SHEET NUMBER:
FA-LEV1-W-D

GENERAL NOTES:

- EXISTING INFORMATION IS SHOWN LIGHT AND BASED ON INFORMATION PROVIDED BY OTHERS. FIELD VERIFY ALL EXISTING EQUIPMENT AND CONNECTIONS AS NEEDED.
- TAP ALL SPEAKERS AT 1/2W, 25watts. FIELD VERIFY VOLTAGE.
- CONTRACTOR TO REDLINE AND NOTE ANY AND ALL CHANGES ON RECORD DRAWING PLANS.

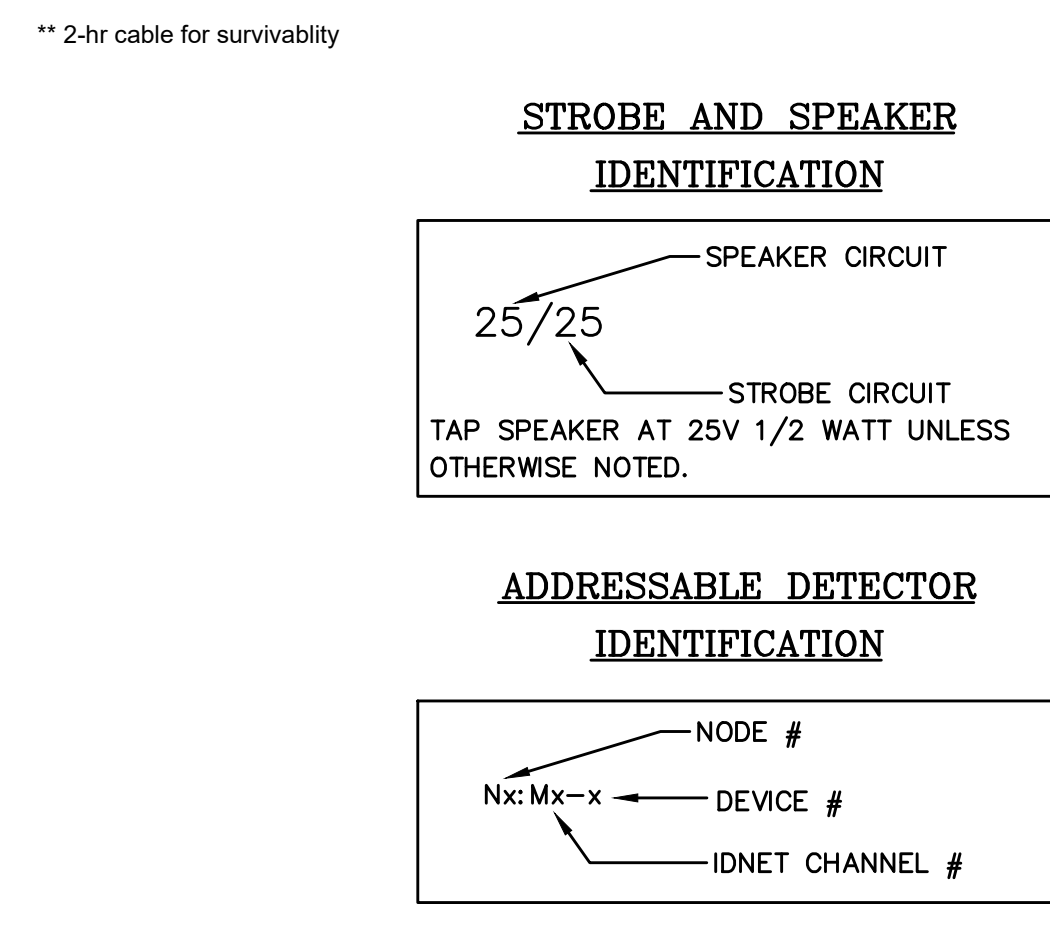
REVISION 49 FLAG NOTES:

- EXISTING DEVICE TO BE REMOVED AND SAVED FOR RELOCATION AS NECESSARY. REMOVE UNNEEDED ASSOCIATED WIRING AND MAINTAIN CIRCUIT INTEGRITY. RELOCATE ANY E.O.L. RESISTORS AS NEEDED. SEE FA-LEV1-W FOR ADDITIONAL CIRCUIT INFORMATION.
- REINSTALL EXISTING DEVICE IN THIS LOCATION. SET CANDELA AND OR DEVICE ADDRESS AS SHOWN. FIELD VERIFY ANY CONNECTIONS TO EXISTING CIRCUITS.
- DEVICES TO BE REMOVED AND RETURNED TO OWNER FOR DISPOSAL. REMOVE UNNEEDED ASSOCIATED WIRING AND MAINTAIN CIRCUIT INTEGRITY.
- EXISTING CIRCUIT END OF LINE RESISTOR TO BE REMOVED FROM THIS LOCATION AND REINSTALLED TO LOCATION SHOWN ON FLOOR PLAN SHEET. MAINTAIN CIRCUIT INTEGRITY DURING DEMO PHASE.
- RELOCATE END OF LINE RESISTOR TO THIS LOCATION.



Symbol	Description	Part #	Backbox
⊠	Multicandela Wall Speaker/Strobe - White	4006-9153	5" sq 2.875" deep w/ ext ring 4" sq adapter by EC
⊠	Multicandela Ceiling Speaker/Strobe - White	4006-9154	5" sq 2.875" deep w/ ext ring 4" sq adapter by EC
⊠	Multicandela Wall Strobe - White	4006-9103	5" sq 2.875" deep w/ ext ring 4" sq adapter by EC
⊠	Multicandela Ceiling Strobe - White	4006-9102	4" sq by EC
⊠	Wall Speaker - White	4002-9717	5" sq 2.875" deep w/ ext ring 4" sq adapter by EC
⊠	Ceiling Speaker - White	4002-9721	5" sq 2.875" deep w/ ext ring 4" sq adapter by EC
⊠	Addressable Manual Station	4099-9003 w/ 811100 Cover	4" sq 2.187" deep w/ sq ring by EC
⊠	Addressable Manual Station Suppression	4099-9015 w/ 4099-9022 Label Kit	4" sq 2.187" deep w/ sq ring by EC
⊠	TrueAlarm Smoke Sensor	4098-9714 w/ 4098-9792 Base	4" oct by EC
⊠	TrueAlarm Heat Sensor	4098-9715 w/ 4098-9792 Base	4" oct by EC
⊠	Heat Detector - 139FT	4098-9792 Base ED-2638-PL	4" oct by EC
⊠	TrueAlarm Duct Sensor	4098-9756	self-contained
⊠	Remote LED w/ Test	2088-8006	sq by EC
⊠	Duct Detector Relay	4098-9843	4" sq wing & cover by EC
⊠	Beam Smoke Detector - Transmitter	BEAM1234	Surface Box w/BEAMSMK Surface
⊠	Beam Smoke Detector - Reflector	4099-9101	4" sq 2.187" deep w/ 2-gang cover by EC
⊠	Monitor ZAM	4099-9001	4" sq wing & cover by EC
⊠	Supervised IAM	By Others	By Others
⊠	Flow Switch	By Others	By Others
⊠	Pressure Switch	By Others	By Others
⊠	Low Air Switch	By Others	By Others
⊠	Pump Switch	By Others	By Others
⊠	Post Indicator Valve	By Others	By Others
⊠	Coil Supervision Module	2081-8046	By Others
⊠	Pre-Action Solenoid	By Others	By Others
⊠	Door Holders	By Others	By Others
⊠	Suppression Mech. Disconnect	2080-9000	Included
⊠	Relay IAM	4099-9002	4" sq 2.187" deep w/ 2-gang cover by EC
⊠	Remote Relay	2088-8008	Remote Relay
⊠	FFT Jack	2084-9001	sq by EC
⊠	FFT Cabinet	2088-9006 w/ 410-2084-9024 handles	23.5" x 23.5" x 4.0" D
⊠	Smoke Control Panel	CEFA-GR-GP6	41" x 29" x 4.75" D
⊠	Suppression Releasing Periphral	4099-9006	8.125" x 6.125" x 4" D
⊠	Printer	4190-9133	Table Top
⊠	LCD Annunciator	4063-9101	6-gang 3.5" deep by EC or RSA-WP-SA 13" x 23.5" x 5.5" D
⊠	Terminal Cabinet	35U0681	19" x 23.5" x 5.5" D
⊠	Transponder Panel	4100-9601	50" x 24" x 8.375" D
⊠	Fire Alarm Control Panel	4100-9114	50" x 24" x 8.375" D
⊠	Network Display Unit	4100-9151	50" x 24" x 8.375" D
⊠	400TES Pre-Action Panel	4007-9101	16.25" x 13.5" x 5.75" D

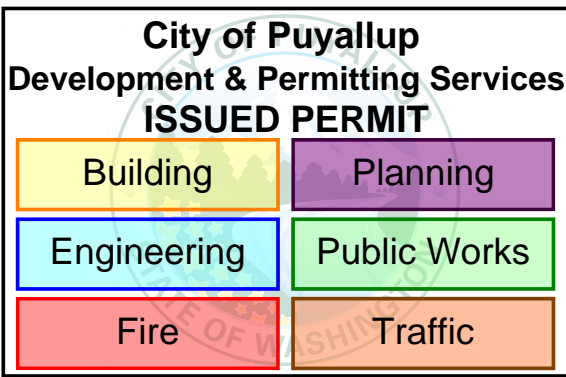
Letter	Qty	Color/Type	Size	Function
A	2	Black/Orange TFN	16	Zone
C	2	Red/Blue THHN	14	Home/Strobe
D	4	(2) Red(2) Blue THHN	14	Home/Strobe Loop
E	2	Brown/Yellow THHN	14	Door Holders
F	2	Orange THHN	14	Fan Shutdown
H	1	WestPenn D975	18	Serial Communication
J	1	WestPenn 991	16	Speaker
K	1	WestPenn 991	16	Speaker Loop
L	1	WestPenn 5220FZ	16	Local Network Connection**
M	1	WestPenn 5220FZ	16	Miniplex Transponder**
N	2	WestPenn 5120UZ	14	Network Connection
P	2	Red/Black THHN	14	24VDC Power
R	2	Blue/White TFN	16	Remote LED w/Test
T	2	Pink TFN	16	Fire Fighter Telephone
V	1	WestPenn D977	16	Printer
X	1	WestPenn D975	18	Addressable Data Line




** 2-hr cable for survivability

STROBE AND SPEAKER IDENTIFICATION

ADDRESSABLE DETECTOR IDENTIFICATION



LEVEL 1 WEST FLOOR PLAN
SCALE 1/8"=1'-0"



12781 Gateway Drive
Tukwila, WA 98188
SALES: 206-291-1400
SERVICE: 206-291-1400

REVISION	DESCRIPTION	DATE	BY	CHECKED
49	EXISTING DEVICE TO BE REMOVED AND SAVED FOR RELOCATION AS NECESSARY. REMOVE UNNEEDED ASSOCIATED WIRING AND MAINTAIN CIRCUIT INTEGRITY. RELOCATE ANY E.O.L. RESISTORS AS NEEDED. SEE FA-LEV1-W FOR ADDITIONAL CIRCUIT INFORMATION.	9/20/19	RSC	DAP
48	REINSTALL EXISTING DEVICE IN THIS LOCATION. SET CANDELA AND OR DEVICE ADDRESS AS SHOWN. FIELD VERIFY ANY CONNECTIONS TO EXISTING CIRCUITS.	9/21/22	ARH	ARB
47	DEVICES TO BE REMOVED AND RETURNED TO OWNER FOR DISPOSAL. REMOVE UNNEEDED ASSOCIATED WIRING AND MAINTAIN CIRCUIT INTEGRITY.	4/12/23	ARB	ARB
46	EXISTING CIRCUIT END OF LINE RESISTOR TO BE REMOVED FROM THIS LOCATION AND REINSTALLED TO LOCATION SHOWN ON FLOOR PLAN SHEET. MAINTAIN CIRCUIT INTEGRITY DURING DEMO PHASE.	9/12/23	ARB	ARB
45	RELOCATE END OF LINE RESISTOR TO THIS LOCATION.	1/24/24	ARB	ARB

DRAWINGS REVIEWED BY:
Eric Beck, CET
NICK K228584
Fire Alarm Systems, Level III

FIRE ALARM SYSTEM
LEVEL 1 WEST FLOOR PLAN
GOOD SAMARITAN - PATIENT CARE TOWER
401 15TH AVENUE SE
PUYALLUP, WA 98371

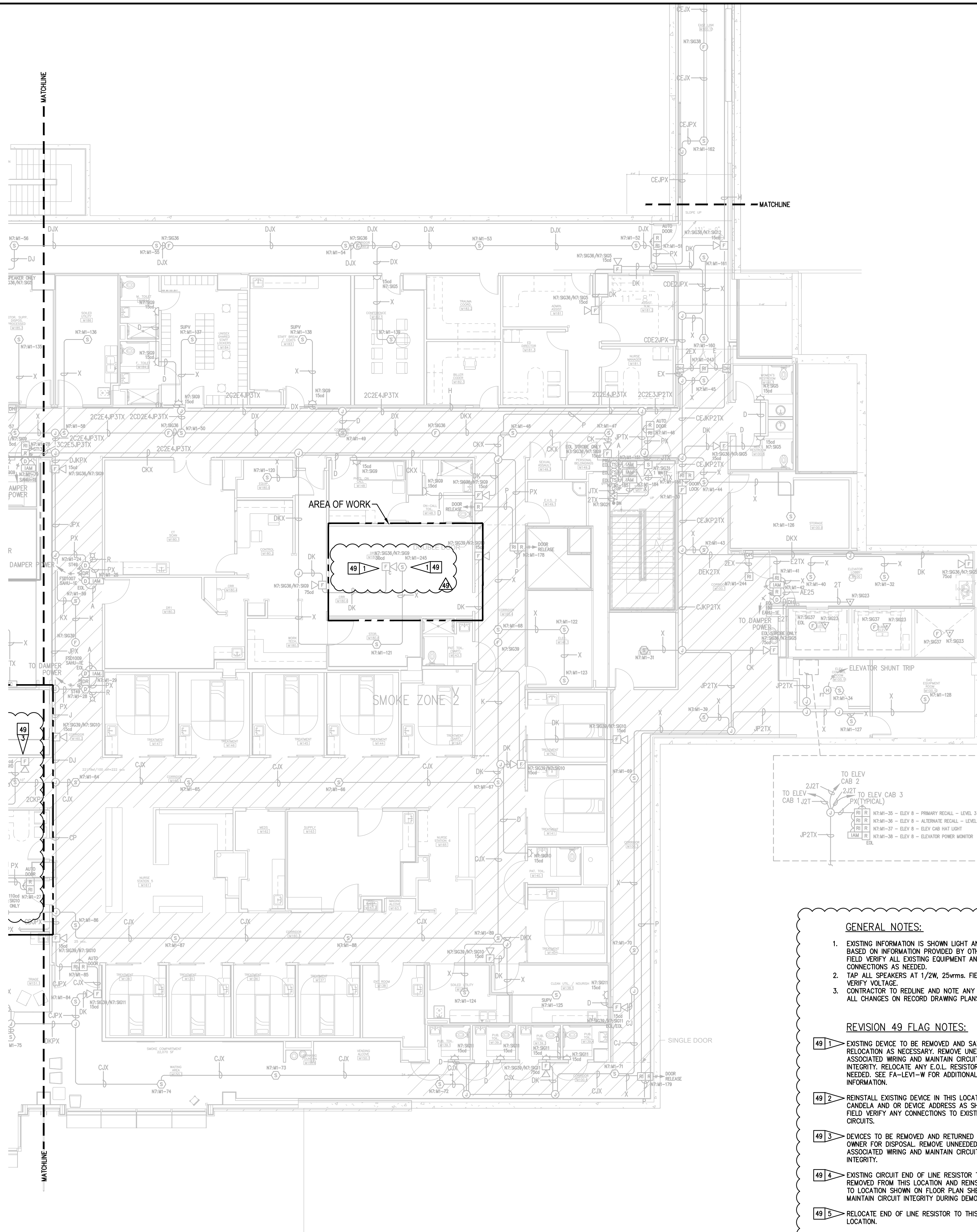
APPROVED BY:
C. McCAMMON

DRAWN BY:
C. McCAMMON

DATE:
8/12/09

SITE/PROJECT NUMBER:
458413141/943123501

SHEET NUMBER:
FA-LEV1-W

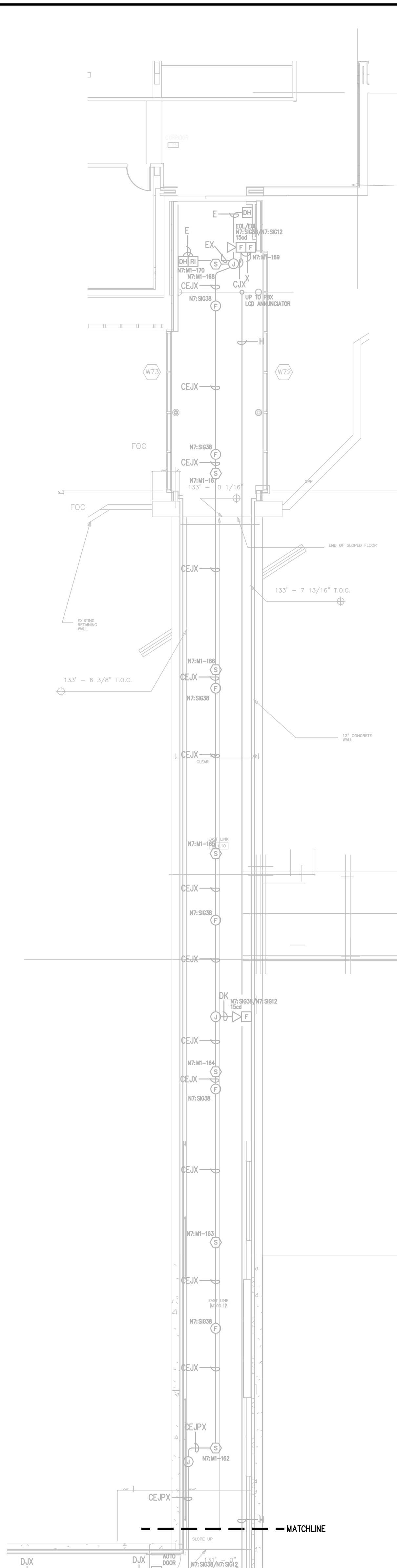


GENERAL NOTES:

- EXISTING INFORMATION IS SHOWN LIGHT AND BASED ON INFORMATION PROVIDED BY OTHERS. FIELD VERIFY ALL EXISTING EQUIPMENT AND CONNECTIONS AS NEEDED.
- TAP ALL SPEAKERS AT 1/2W, 25wrms. FIELD VERIFY VOLTAGE.
- CONTRACTOR TO REDLINE AND NOTE ANY AND ALL CHANGES ON RECORD DRAWING PLANS.

REVISION 49 FLAG NOTES:

- EXISTING DEVICE TO BE REMOVED AND SAVED FOR RELOCATION AS NECESSARY. REMOVE UNNEEDED ASSOCIATED WIRING AND MAINTAIN CIRCUIT INTEGRITY. RELOCATE ANY E.O.L. RESISTORS AS NEEDED. SEE FA-LEV1-W FOR ADDITIONAL CIRCUIT INFORMATION.
- REINSTALL EXISTING DEVICE IN THIS LOCATION. SET CANDELA AND OR DEVICE ADDRESS AS SHOWN. FIELD VERIFY ANY CONNECTIONS TO EXISTING CIRCUITS.
- DEVICES TO BE REMOVED AND RETURNED TO OWNER FOR DISPOSAL. REMOVE UNNEEDED ASSOCIATED WIRING AND MAINTAIN CIRCUIT INTEGRITY.
- EXISTING CIRCUIT END OF LINE RESISTOR TO BE REMOVED FROM THIS LOCATION AND REINSTALLED TO LOCATION SHOWN ON FLOOR PLAN SHEET. MAINTAIN CIRCUIT INTEGRITY DURING DEMO PHASE.
- RELOCATE END OF LINE RESISTOR TO THIS LOCATION.

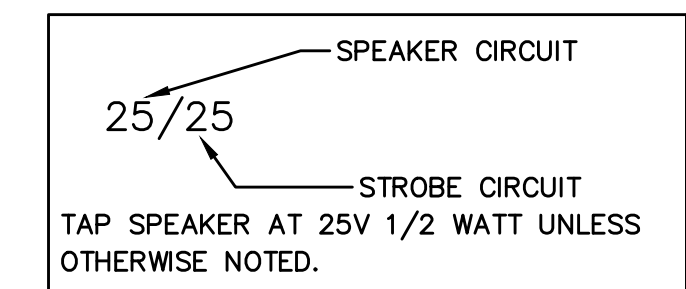


Symbol	Description	Part #	Backbox
[Symbol]	Multicandela Wall Speaker/Strobe - White * subscript indicates circuit # and canдела setting	4906-9153	5" sq 2.875" deep w/ ext ring 4"sq adapter by EC
[Symbol]	Multicandela Ceiling Speaker/Strobe - White * subscript indicates circuit # and canдела setting	4906-9154	5" sq 2.875" deep w/ ext ring 4"sq adapter by EC
[Symbol]	Multicandela Wall Strobe - White * subscript indicates circuit # and canдела setting	4906-9103	4" sq by EC
[Symbol]	Multicandela Ceiling Strobe - White * subscript indicates circuit # and canдела setting	4906-9102	4" sq by EC
[Symbol]	Wall Speaker - White * subscript indicates circuit #	4902-9717	5" sq 2.875" deep w/ ext ring 4"sq adapter by EC
[Symbol]	Ceiling Speaker - White * subscript indicates circuit #	4902-9721	5" sq 2.875" deep w/ ext ring 4"sq adapter by EC
[Symbol]	Addressable Manual Station * subscript indicates device address	4099-9003 w/ 5111100 Cover	4" sq 2 1/8" deep w/ sq ring by EC
[Symbol]	Addressable Manual Station Suppression * subscript indicates device address	4099-9015 w/ 4099-9802 Label Kit	4" sq 2 1/8" deep w/ sq ring by EC
[Symbol]	TrueAlarm Smoke Sensor * subscript indicates device address/ SPSPU indicates supervisory device	4098-9714 w/ 4098-9792 Base	4" oct by EC
[Symbol]	TrueAlarm Heat Sensor * subscript indicates device address	4098-9733 w/ 4098-9792 Base	4" oct by EC
[Symbol]	Heat Detector - 135FT	ED-2838-PL	4" oct by EC
[Symbol]	TrueAlarm Duct Sensor * subscript indicates device address and sampling tube size	4098-9756	self-contained
[Symbol]	Remote LED w/Test	2098-9806	sq by EC
[Symbol]	Duct Detector Relay	4098-9843	4"sq w/sg & cover by EC
[Symbol]	Beam Smoke Detector - Transmitter	BEAM1224	Surface Box w/BEAMSMK Surface
[Symbol]	Beam Smoke Detector - Reflector	4090-9101	4"sq 2 1/8" deep w/ 2-gang cover by EC
[Symbol]	Monitor ZAM * subscript indicates device address	4090-9001	4"sq w/sg & cover by EC
[Symbol]	Supervised IAM * subscript indicates device address	By Others	By Others
[Symbol]	Flow Switch	By Others	By Others
[Symbol]	Pressure Switch	By Others	By Others
[Symbol]	Low Air Switch	By Others	By Others
[Symbol]	Tamper Switch	By Others	By Others
[Symbol]	Post Indicator Valve	By Others	By Others
[Symbol]	Coil Supervision Module	2081-9046	
[Symbol]	Pre-Action Solenoid	By Others	By Others
[Symbol]	Door Holders	By Others	
[Symbol]	Suppression Mech. Disconnect	2080-9060	Included
[Symbol]	Relay IAM * subscript indicates device address	4090-9002	4"sq 2 1/8" deep w/ 2-gang cover by EC
[Symbol]	Remote Relay	2088-9008	self-contained
[Symbol]	FFT Jack	2084-9001	sq by EC
[Symbol]	FFT Cabinet	2084-9026 w/ (10) 2084-9024 handsets	23.5"H x 23.5"W x 4.0"D
[Symbol]	Smoke Control Panel	CEP-L-GR-GP6	41"H x 29"W x 4.75"D
[Symbol]	Suppression Releasing Peripheral	4090-9006	8.125"H x 6.125"W x 4.0"D Surface Mount
[Symbol]	Printer	4190-9013	Table Top
[Symbol]	LCD Annunciator	4603-9101	6-gang 3.5"deep by EC or RSA-WP-SA
[Symbol]	Terminal Cabinet	SSU00661	13"H x 23.5"W x 5.5"D
[Symbol]	Transponder Panel	4100-9601	56"H x 24"W x 8.375"D 2975-9432
[Symbol]	Fire Alarm Control Panel	4100-9114	56"H x 24"W x 8.375"D 2975-9426
[Symbol]	Network Display Unit	4100-9151	56"H x 24"W x 8.375"D 2975-9426
[Symbol]	4007ES Pre-Action Panel	4007-9101	16.25"H x 13.5"W x 5.75"D

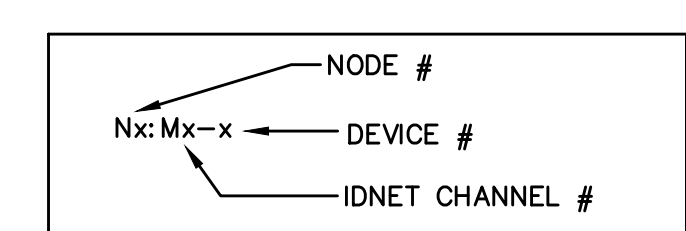
Wire Code				
Letter	Qty	Color/Type	Size	Function
A	2	Black/Orange TFN	16	Zone
C	2	Red/Blue THHN	14	Horn/Strobe
D	4	(2) Red/2) Blue THHN	14	Horn/Strobe Loop
E	2	Brown/Yellow THHN	14	Door Holders
F	2	Orange THHN	14	Fan Shutdown
H	1	WestPenn D975	18	Serial Communication
J	1	Red/Black THHN	14	Speaker
J	1	WestPenn 991	16	Speaker
K	2	WestPenn 991	16	Speaker Loop
L	1	WestPenn 5220FZ	16	Local Network Connection**
L	1	WestPenn 5220FZ	16	Miniplex Transponder**
M	1	WestPenn 5220FZ	16	Miniplex Transponder**
M	1	WestPenn 5220FZ	16	Miniplex Transponder**
N	2	WestPenn 5120UZ	14	Network Connection
N	2	WestPenn D975	18	24VDC Power
P	2	Red/Black THHN	14	Remote LED w/Test
R	2	Blue/White TFN	16	Fire Fighter Telephone
T	2	Pink TFN	16	Printer
T	1	WestPenn 991	16	Fire Fighter Telephone
V	1	WestPenn D977	18	Addressable Data Line
X	1	WestPenn D975	18	Addressable Data Line

** 2r cable for survivability

STROBE AND SPEAKER IDENTIFICATION



ADDRESSABLE DETECTOR IDENTIFICATION



City of Puyallup
Development & Permitting Services
ISSUED PERMIT

Building	Planning
Engineering	Public Works
Fire	Traffic

LEVEL 1 EAST DEMO PLAN
SCALE 1/8"=1'-0"

LEVEL 1 EAST LINK FLOOR PLAN
SCALE 1/8"=1'-0"

Johnson Controls
12781 Gateway Drive
Tukwila, WA 98188
SALES: 206-291-1400
SERVICE: 206-291-1400

REVISION	DATE	DESCRIPTION	DRAWN	CHECKED	ENGINEER	PROJECT #
49	9/20/19	DAILY PHARMACY RECORD DRAWINGS	RSC		EQB	610318294
48	9/21/22	EGRESS DOORS	DAP		EQB	660109145
47	4/12/23	MFC PRE-ACTION PANEL UPGRADE	ARH		EQB	660576984
46	9/12/23	MFC PRE-ACTION PANEL UPGRADE - RECORD DRAWING	JOB		EQB	660576984
45	1/24/24	CSH ED. FAST TRACK REMODEL	MAN		EQB	660476983

DRAWINGS REVIEWED BY:
Eric Beck, CET
NICK K22884
Fire Alarm Systems, Level III

FIRE ALARM SYSTEM
LEVEL 1 EAST FLOOR PLAN
GOOD SAMARITAN - PATIENT CARE TOWER
401 15TH AVENUE SE
PUYALLUP, WA 98371

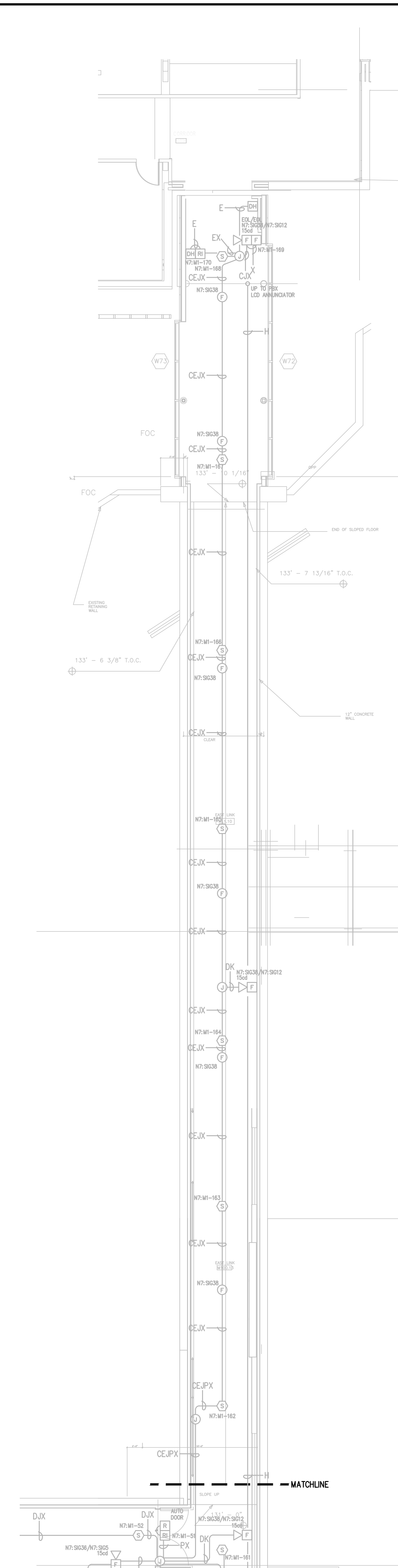
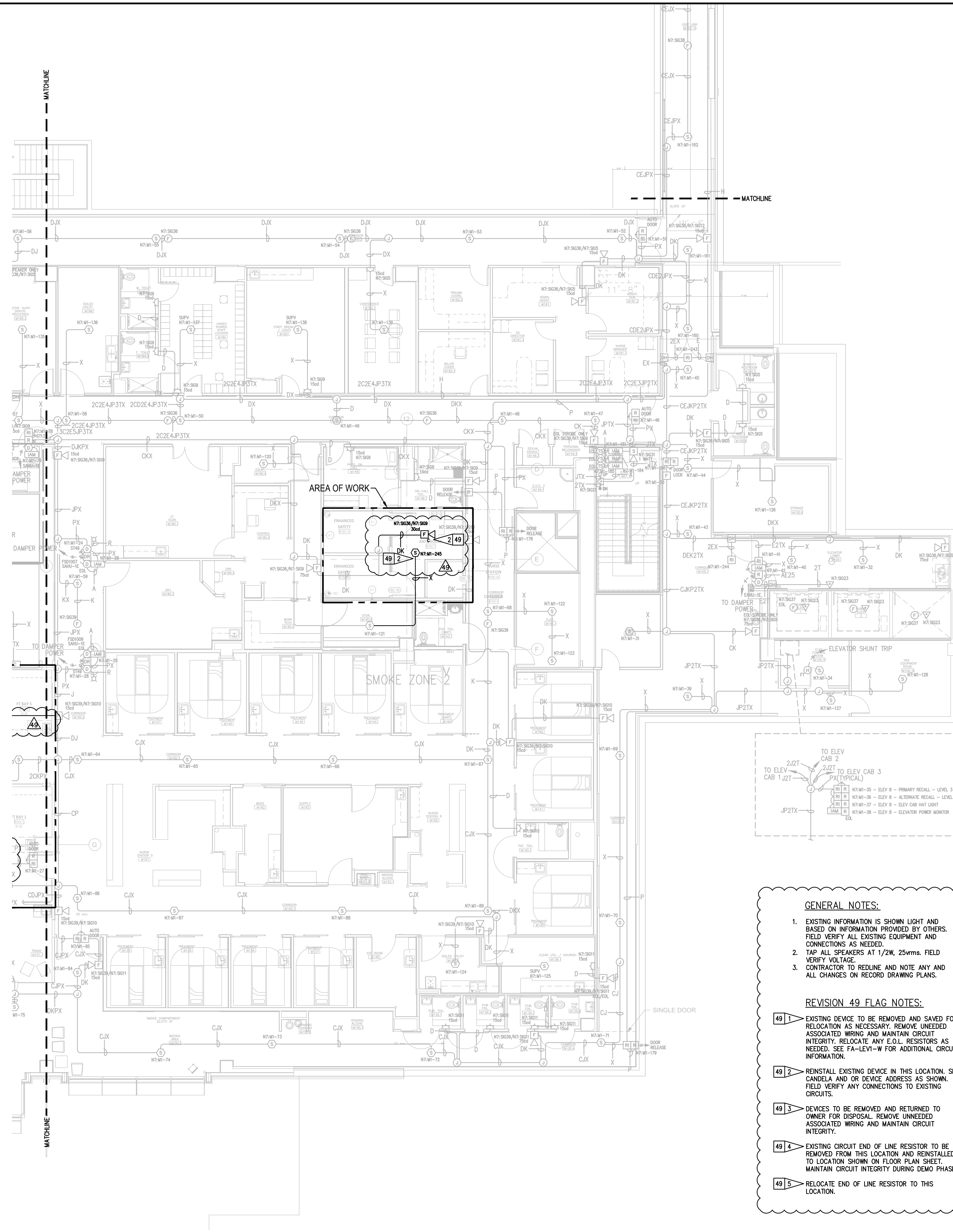
APPROVED BY:
C. McCAMMON

DRAWN BY:
C. McCAMMON

DATE:
8/12/09

SITE/PROJECT NUMBER:
458413141/943123501

SHEET NUMBER:
FA-LEV1-E-D



GENERAL NOTES:

- EXISTING INFORMATION IS SHOWN LIGHT AND BASED ON INFORMATION PROVIDED BY OTHERS. FIELD VERIFY ALL EXISTING EQUIPMENT AND CONNECTIONS AS NEEDED.
- TAP ALL SPEAKERS AT 1/2W, 25Vrms. FIELD VERIFY VOLTAGE.
- CONTRACTOR TO REDLINE AND NOTE ANY AND ALL CHANGES ON RECORD DRAWING PLANS.

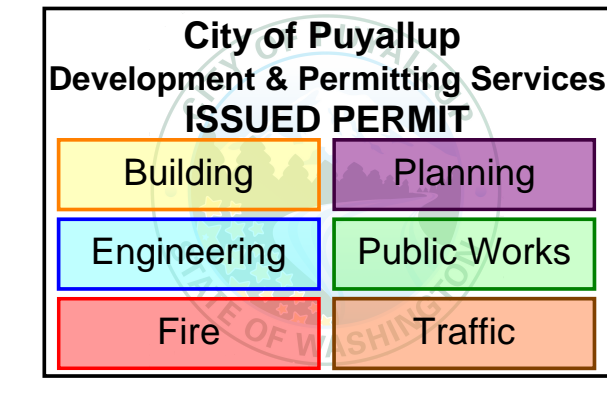
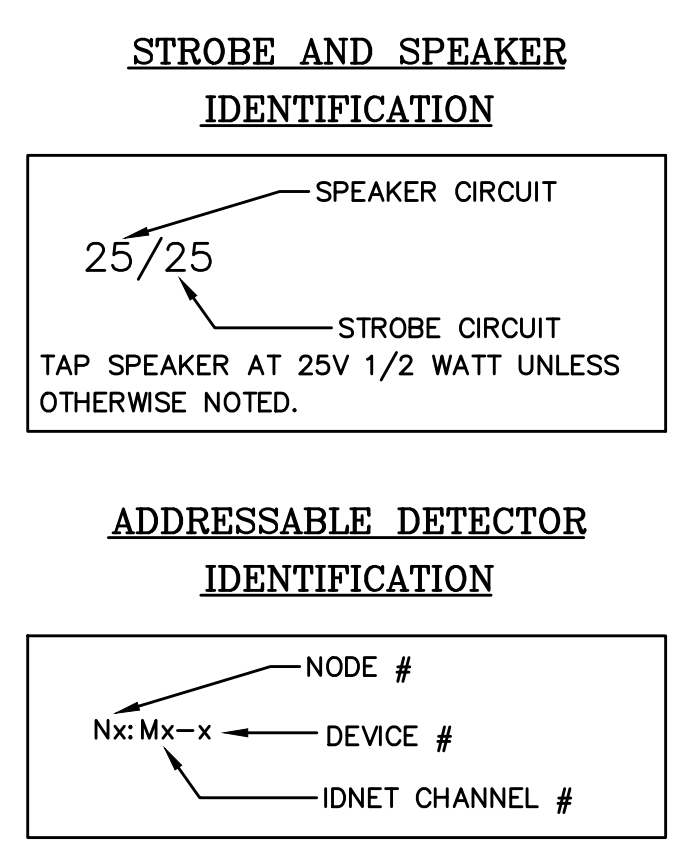
REVISION 49 FLAG NOTES:

- EXISTING DEVICE TO BE REMOVED AND SAVED FOR RELOCATION AS NECESSARY. REMOVE UNNEEDED ASSOCIATED WIRING AND MAINTAIN CIRCUIT INTEGRITY. RELOCATE ANY E.O.L. RESISTORS AS NEEDED. SEE FA-LEV1-W FOR ADDITIONAL CIRCUIT INFORMATION.
- REINSTALL EXISTING DEVICE IN THIS LOCATION. SET CANDELA AND OR DEVICE ADDRESS AS SHOWN. FIELD VERIFY ANY CONNECTIONS TO EXISTING CIRCUITS.
- DEVICES TO BE REMOVED AND RETURNED TO OWNER FOR DISPOSAL. REMOVE UNNEEDED ASSOCIATED WIRING AND MAINTAIN CIRCUIT INTEGRITY.
- EXISTING CIRCUIT END OF LINE RESISTOR TO BE REMOVED FROM THIS LOCATION AND REINSTALLED TO LOCATION SHOWN ON FLOOR PLAN SHEET. MAINTAIN CIRCUIT INTEGRITY DURING DEMO PHASE.
- RELOCATE END OF LINE RESISTOR TO THIS LOCATION.

Symbol	Description	Part #	Backbox
[Symbol]	Multicandela Wall Speaker/Strobe - White *subscript indicates circuit # and candela setting	4906-9153	5" sq 2.875" deep w/ ext ring 4"sq adapter by EC
[Symbol]	Multicandela Ceiling Speaker/Strobe - White *subscript indicates circuit # and candela setting	4906-9154	5" sq 2.875" deep w/ ext ring 4"sq adapter by EC
[Symbol]	Multicandela Wall Strobe - White *subscript indicates circuit # and candela setting	4906-9103	4" sq by EC
[Symbol]	Multicandela Ceiling Strobe - White *subscript indicates circuit # and candela setting	4906-9102	4" sq by EC
[Symbol]	Wall Speaker - White *subscript indicates circuit #	4902-9717	5" sq 2.875" deep w/ ext ring 4"sq adapter by EC
[Symbol]	Ceiling Speaker - White *subscript indicates circuit #	4902-9721	5" sq 2.875" deep w/ ext ring 4"sq adapter by EC
[Symbol]	Addressable Manual Station *subscript indicates device address	4099-9003 w/ 5111100 Cover	4" sq 2 1/8" deep w/ sq ring by EC
[Symbol]	Addressable Manual Station Suppression *subscript indicates device address	4099-9015 w/ 4099-9802 Label Kit	4" sq 2 1/8" deep w/ sq ring by EC
[Symbol]	TrueAlarm Smoke Sensor *subscript indicates device address/ SPS/PV indicates supervisory device	4098-9714 w/ 4098-9792 Base	4" oct by EC
[Symbol]	TrueAlarm Heat Sensor *subscript indicates device address	4098-9733 w/ 4098-9792 Base	4" oct by EC
[Symbol]	Heat Detector - 135FT	ED-2838-PL	4" oct by EC
[Symbol]	TrueAlarm Duct Sensor *subscript indicates device address and sampling tube size	4098-9756	self-contained
[Symbol]	Remote LED w/Test	2098-9806	sq by EC
[Symbol]	Duct Detector Relay	4098-9843	4"sq w/sg & cover by EC
[Symbol]	Beam Smoke Detector - Transmitter *subscript indicates device address	BEAM1224	Surface Box w/BEAMSMK Surface
[Symbol]	Monitor ZAM *subscript indicates device address	4090-9101	4" sq 2 1/8" deep w/ 2-gang cover by EC
[Symbol]	Supervised IAM *subscript indicates device address	4090-9001	4"sq w/sg & cover by EC
[Symbol]	Flow Switch	By Others	By Others
[Symbol]	Pressure Switch	By Others	By Others
[Symbol]	Low Air Switch	By Others	By Others
[Symbol]	Tamper Switch	By Others	By Others
[Symbol]	Post Indicator Valve	By Others	By Others
[Symbol]	Col Supervision Module	2081-9046	
[Symbol]	Pre-Action Solenoid	By Others	By Others
[Symbol]	Door Holders	By Others	
[Symbol]	Suppression Mech. Disconnect	2080-9060	Included
[Symbol]	Relay IAM *subscript indicates device address	4090-9002	4"sq 2 1/8" deep w/ 2-gang cover by EC
[Symbol]	Remote Relay	2088-9008	self-contained
[Symbol]	FFT Jack	2084-9001	sq by EC
[Symbol]	FFT Cabinet	2084-9026 w/ (10) 2084-9024 handsets	23.5"H x 23.5"W x 4.0"D
[Symbol]	Smoke Control Panel	CEP-L-GR-CP6	41"H x 29"W x 4.75"D
[Symbol]	Suppression Releasing Peripheral	4090-9006	8.125"H x 6.125"W x 4"D Surface Mount
[Symbol]	Printer	4190-9013	Table Top
[Symbol]	LCD Annunciator	4603-9101	6-gang 3.5"deep by EC or RSA-WP-SA
[Symbol]	Terminal Cabinet	SSU00661	13"H x 23.5"W x 5.5"D
[Symbol]	Transponder Panel	4100-9601	56"H x 24"W x 8.375"D 2975-9432
[Symbol]	Fire Alarm Control Panel	4100-9114	56"H x 24"W x 8.375"D 2975-9426
[Symbol]	Network Display Unit	4100-9151	56"H x 24"W x 8.375"D 2975-9426
[Symbol]	4007ES Pre-Action Panel	4007-9101	16.25"H x 13.5"W x 5.75"D

Wire Code				
Letter	Qty	Color/Type	Size	Function
A	2	Black/Orange TFN	16	Zone
C	2	Red/Blue THHN	14	Horn/Strobe
D	4	(2) Red/2) Blue THHN	14	Horn/Strobe Loop
E	2	Brown/Yellow THHN	14	Door Holders
F	2	Orange THHN	14	Fan Shutdown
H	1	WestPenn D975	18	Serial Communication
J	1	WestPenn 991	16	Speaker
K	2	WestPenn 991	16	Speaker Loop
L	1	WestPenn 5220FZ	16	Local Network Connection**
M	1	WestPenn 5220FZ	16	Miniplex Transponder**
N	2	WestPenn 5120UZ	14	Network Connection
P	2	Red/Black THHN	14	24VDC Power
R	2	Blue/White TFN	16	Remote LED w/Test
T	1	WestPenn 991	16	Fire Fighter Telephone
V	1	WestPenn D975	18	Printer
X	1	WestPenn D975	18	Addressable Data Line

** 2-hr cable for survivability



LEVEL 1 EAST FLOOR PLAN
SCALE 1/8"=1'-0"

LEVEL 1 EAST LINK FLOOR PLAN
SCALE 1/8"=1'-0"

Johnson Controls
12781 Gateway Drive
Tukwila, WA 98188
SALES: 206-291-1400
SERVICE: 206-291-1400

PROJECT #	ENGINEER	DRAPTER	REVISION	DESCRIPTION	DATE	NO.
610318294	RSC	RSC	DAILY PHARMACY RECORD DRAWINGS	9/20/19	47	
660109145	BOB	DAP	EGRESS DOORS	9/21/22	48	
660576984	BOB	ARIH	MRI PRE-ACTION PANEL UPGRADE	4/12/23	49	
660576984	BOB	ARIH	MRI PRE-ACTION PANEL UPGRADE - RECORD DRAWING	9/12/23	49	
660479383	BOB	MAN	CSH ED. FAST TRACK REMODEL	1/24/24	49	

DRAWINGS REVIEWED BY:
Eric Beck, CET
NICT #228884
Fire Alarm Systems, Level III

FIRE ALARM SYSTEM
LEVEL 1 EAST FLOOR PLAN
GOOD SAMARITAN - PATIENT CARE TOWER
401 15TH AVENUE SE
PUYALLUP, WA 98371

APPROVED BY:
C. McCAMMON

DRAWN BY:
C. McCAMMON

DATE:
8/12/09

SITE/PROJECT NUMBER:
458413141/943123501

SHEET NUMBER:
FA-LEV1-E