



Make SAFETY as part of every plan

PRCNC20240424

GENERAL NOTES

A. SEE SEPARATE FLOOR PLANS FOR WIFI ACCESS POINT LOCATIONS. INSTALL ONE CAT5e CABLE TO EACH LOCATION. INSTALL OWNER FURNISHED ACCESS POINT.



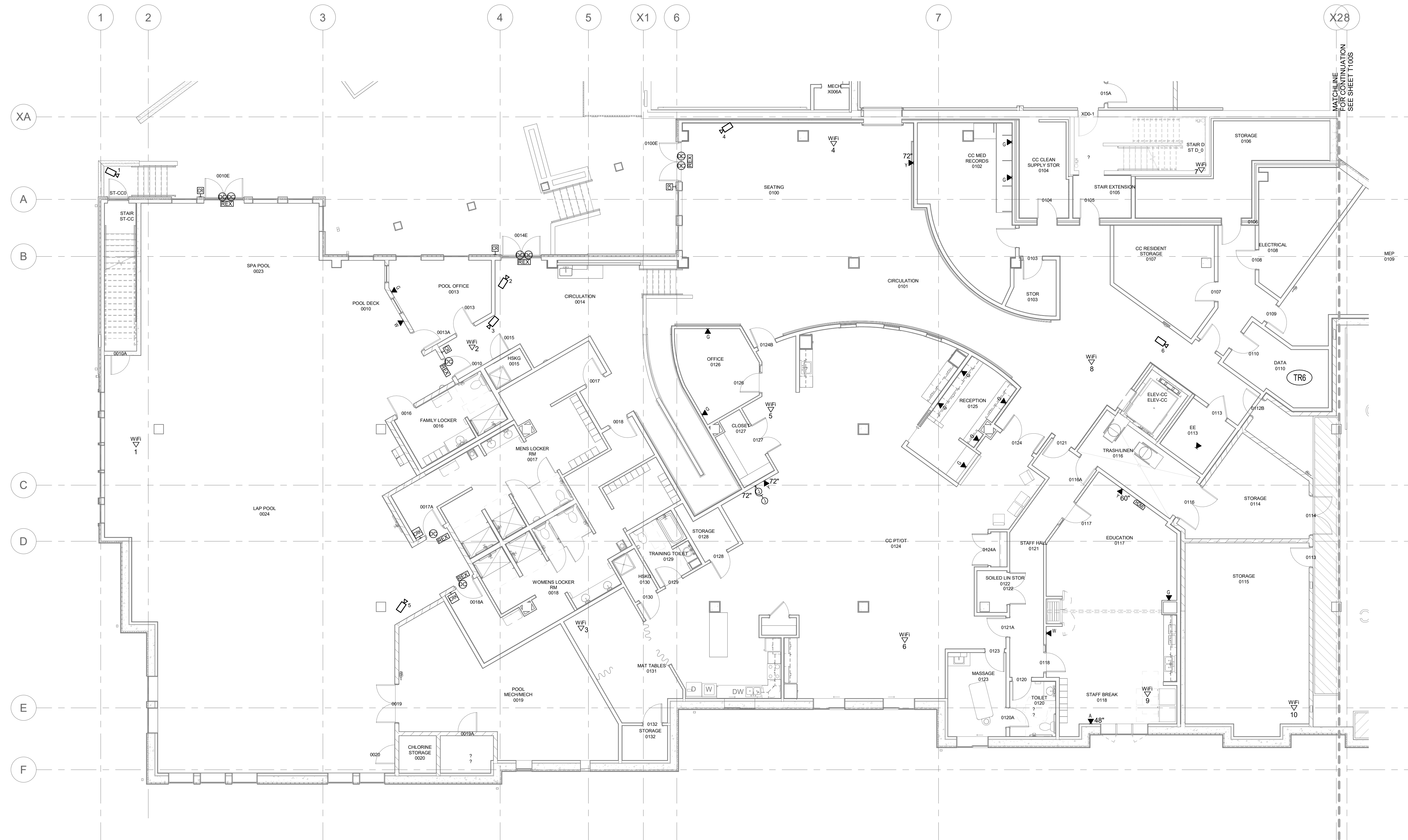
278 State Street  
St. Paul, Minnesota 55107-1679  
Telephone (651) 224-2833  
Fax (651) 292-0359  
www.collinsmn.com

I HEREBY CERTIFY THAT THIS PLAN SPECIFICATION OR REPORT WAS PREPARED BY ME OR UNDER MY DIRECT SUPERVISION AND THAT I AM A DULY LICENSED PROFESSIONAL ENGINEER UNDER THE LAWS OF THE STATE OF MINNESOTA  
DATE: -  
REG.#:

SIGNED:

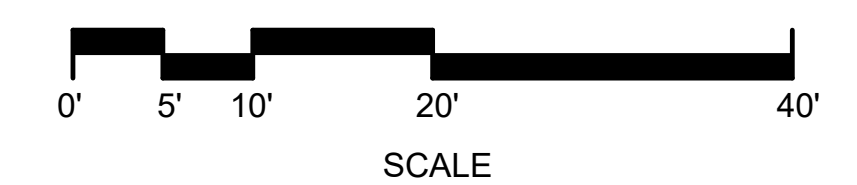
DRAWN BY: J. VERDICK  
CHECKED BY: P. MYERS  
DATE: -  
JOB NUMBER:  
FILE NAME: REVIT 2022

REVISIONS		
1	6-2-23	PERMIT SET
2	7-20-23	WIFI LOCATION UPDATE
3	10-16-23	PERMIT SET/DOH SUBMITTAL



WESLEY BRADLEY PARK 2  
PHASE 2 - CARE CENTER  
707 39TH AVENUE SOUTHEAST  
PUYALLUP, WASHINGTON 98374

LEVEL 0 TECHNOLOGY  
PLAN CARE  
CENTER-NORTH



T100N

Make SAFETY as part of every plan

PRCNC20240424

GENERAL NOTES

A. SEE SEPARATE FLOOR PLANS FOR WIFI ACCESS POINT LOCATIONS. INSTALL ONE CAT5e CABLE TO EACH LOCATION. INSTALL OWNER FURNISHED ACCESS POINT.



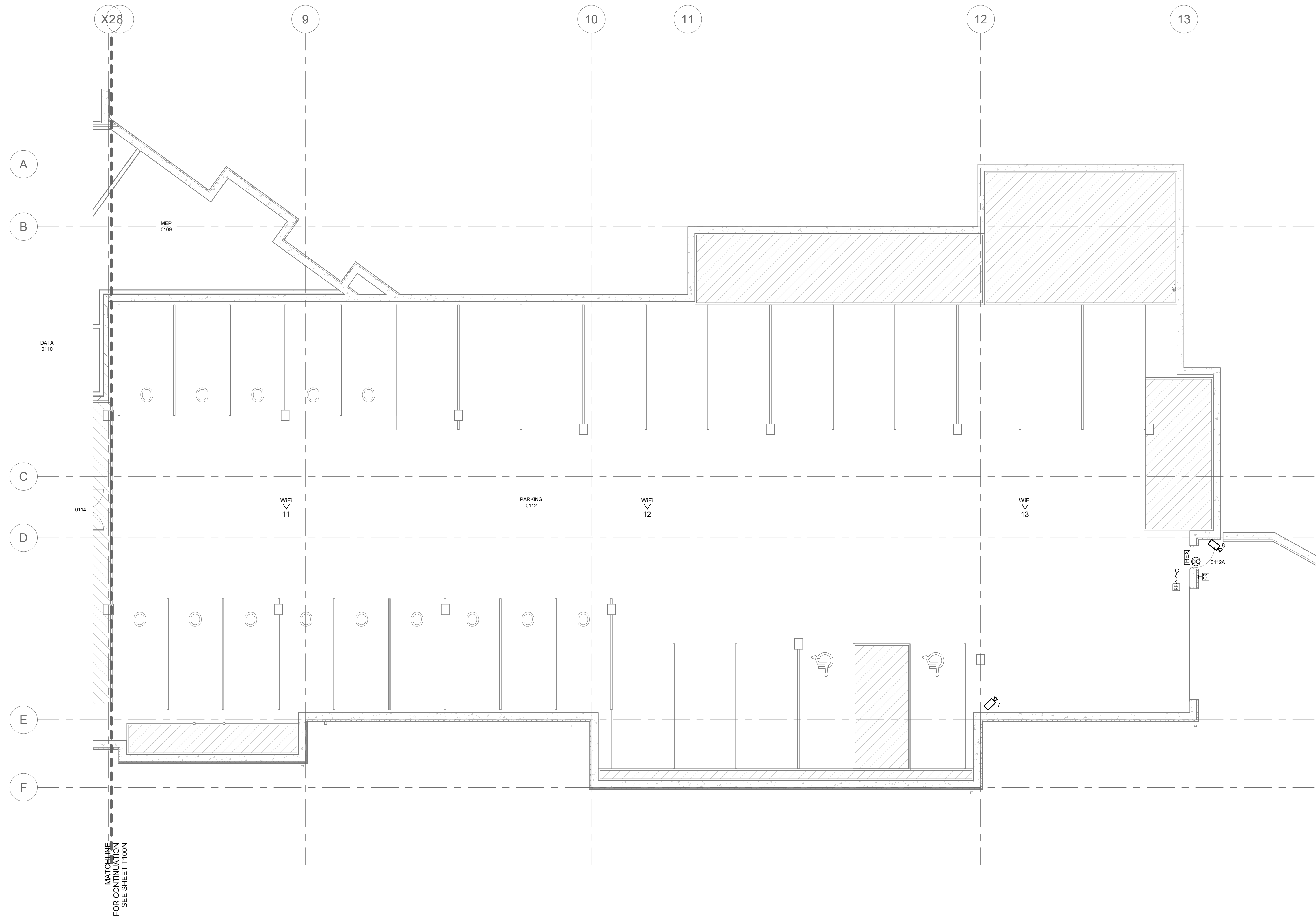
ELECTRICAL + TECHNOLOGY  
278 State Street  
St. Paul, Minnesota 55107-1679  
Telephone (651) 224-2633  
Fax (651) 292-0359  
www.collinsmn.com

I HEREBY CERTIFY THAT THIS PLAN SPECIFICATION OR REPORT WAS PREPARED BY ME OR UNDER MY DIRECT SUPERVISION AND THAT I AM A DULY LICENSED PROFESSIONAL ENGINEER UNDER THE LAWS OF THE STATE OF MINNESOTA  
DATE: -  
REG. #:

SIGNED:

DRAWN BY: J. VERDICK  
CHECKED BY: P. MYERS  
DATE: -  
JOB NUMBER:  
FILE NAME: REVIT 2022

REVISIONS		
1	6-2-23	PERMIT SET
2	7-20-23	WIFI LOCATION UPDATE
3	10-16-23	PERMIT SET/DOH SUBMITTAL



WESLEY BRADLEY PARK 2  
PHASE 2 - CARE CENTER  
707 39TH AVENUE SOUTHEAST  
PUYALLUP, WASHINGTON 98374

LEVEL 0 TECHNOLOGY  
PLAN CARE  
CENTER-SOUTH

T100S

GENERAL NOTES

A. SEE SEPARATE FLOOR PLANS FOR WIFI ACCESS POINT LOCATIONS. INSTALL ONE CAT5e CABLE TO EACH LOCATION. INSTALL OWNER FURNISHED ACCESS POINT.

NUMBERED NOTES

- 1. CONFIGURE DOOR CONTROLS TO RELEASE ON FIRE ALARM AND CENTRAL OVERRIDE SWITCH. CONFIGURE DOOR CONTACT TO BE SHUNTED FOR A VALID KEYPAD CODE ENTRY WITH ALARM DRY CONTACT TO BE CONNECTED TO ECALL SYSTEM WIRELESS TRANSMITTER.
- 2. DOOR WILL HAVE HANDGUARD WITH MAG LOCK TO CONTROL EGRESS.
- 3. OVERRIDE SWITCH TO RELEASE ALL EGRESS CONTROL DOOR LOCKS.
- 4. VERIFY TERMINATION PROCEDURE AND LOCATION WITH POS VENDOR. IF NO POS SYSTEM THEN TERMINATE LABEL "FUTURE USE" AND LEAVE COILED ABOVE CEILING.
- 5. FURNISH AND INSTALL DEDICATED MONITOR AND IP VIDEO DECODER TO CAPTURE CCTV VIDEO.
- 6. FOR AUDIOVISUAL LAYOUT OF THIS AREA SEE DETAIL 217300.
- 7. FOR AUDIOVISUAL LAYOUT OF THIS AREA SEE DETAIL 117300.



278 State Street  
 St. Paul, Minnesota 55107-1679  
 Telephone (651) 224-2633  
 Fax (651) 292-0359  
 www.collinsmn.com

I HEREBY CERTIFY THAT THIS PLAN SPECIFICATION OR REPORT WAS PREPARED BY ME OR UNDER MY DIRECT SUPERVISION AND THAT I AM A DULY LICENSED PROFESSIONAL ENGINEER UNDER THE LAWS OF THE STATE OF MINNESOTA  
 DATE: -  
 REG. #:

SIGNED:  
 DRAWN BY: J. VERDICK  
 CHECKED BY: P. MYERS  
 DATE: -  
 JOB NUMBER:  
 FILE NAME: REVIT 2022

REVISIONS		
1	6-2-23	PERMIT SET
2	7-20-23	WIFI LOCATION UPDATE
3	10-16-23	PERMIT SET/DOH SUBMITTAL



WESLEY BRADLEY PARK 2  
 PHASE 2 - CARE CENTER  
 707 39TH AVENUE SOUTHEAST  
 PUYALLUP, WASHINGTON 98374

LEVEL 1 TECHNOLOGY  
 PLAN CARE  
 CENTER-NORTH

T101N

PRCNC20240424

**GENERAL NOTES**

A. SEE SEPARATE FLOOR PLANS FOR WIFI ACCESS POINT LOCATIONS. INSTALL ONE CAT5e CABLE TO EACH LOCATION. INSTALL OWNER FURNISHED ACCESS POINT.

**NUMBERED NOTES**

- 1 PUSH BUTTON FOR VESTIBULE DOOR RELEASE. INSTALL 2x#18 CABLE TO S2 ACCESS CONTROL PANEL.
- 2 PUSH BUTTON/PANIC BUTTON CONNECTED TO MONITORED BURGLAR ALARM SYSTEM. CABLE TO MAIN ER.
- 3 DOOR WILL HAVE WANDERGUARD WITH MAG LOCK TO CONTROL EGRESS.
- 4 CONFIGURE DOOR CONTROLS TO RELEASE ON FIRE ALARM AND CENTRAL OVERRIDE SWITCH. CONFIGURE DOOR CONTACT TO BE SHUNTED FOR A VALID KEYPAD CODE ENTRY WITH ALARM DRY CONTACT TO BE CONNECTED TO ECALL SYSTEM WIRELESS TRANSMITTER.
- 5 OVERRIDE SWITCH TO RELEASE ALL EGRESS CONTROL DOOR LOCKS.

**Collins**  
ELECTRICAL + TECHNOLOGY  
278 State Street  
St. Paul, Minnesota 55107-1679  
Telephone (651) 224-2633  
Fax (651) 292-0359  
www.collinsmn.com

I HEREBY CERTIFY THAT THIS PLAN SPECIFICATION OR REPORT WAS PREPARED BY ME OR UNDER MY DIRECT SUPERVISION AND THAT I AM A DULY LICENSED PROFESSIONAL ENGINEER UNDER THE LAWS OF THE STATE OF MINNESOTA  
DATE: - REG. #:

SIGNED:  
DRAWN BY: J. VERDICK  
CHECKED BY: P. MYERS  
DATE: -  
JOB NUMBER:  
FILE NAME: REVIT 2022

REVISIONS	
1	6-2-23 PERMIT SET
2	7-20-23 WIFI LOCATION UPDATE
3	10-16-23 PERMIT SET/DOH SUBMITTAL



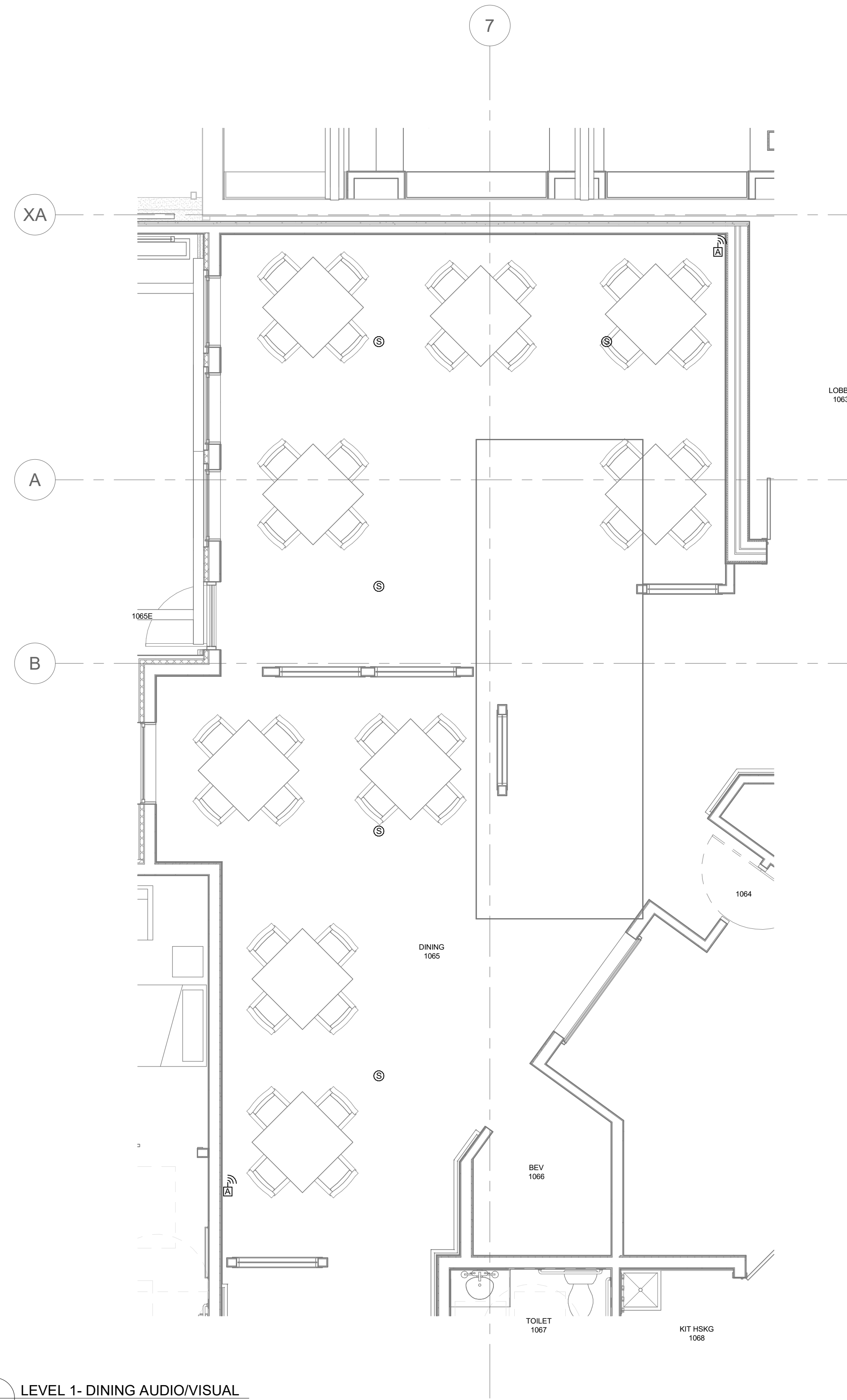
**WESLEY BRADLEY PARK 2**  
PHASE 2 - CARE CENTER  
707 39TH AVENUE SOUTHEAST  
PUYALLUP, WASHINGTON 98374

LEVEL 1 TECHNOLOGY  
PLAN CARE  
CENTER-SOUTH

**T101S**

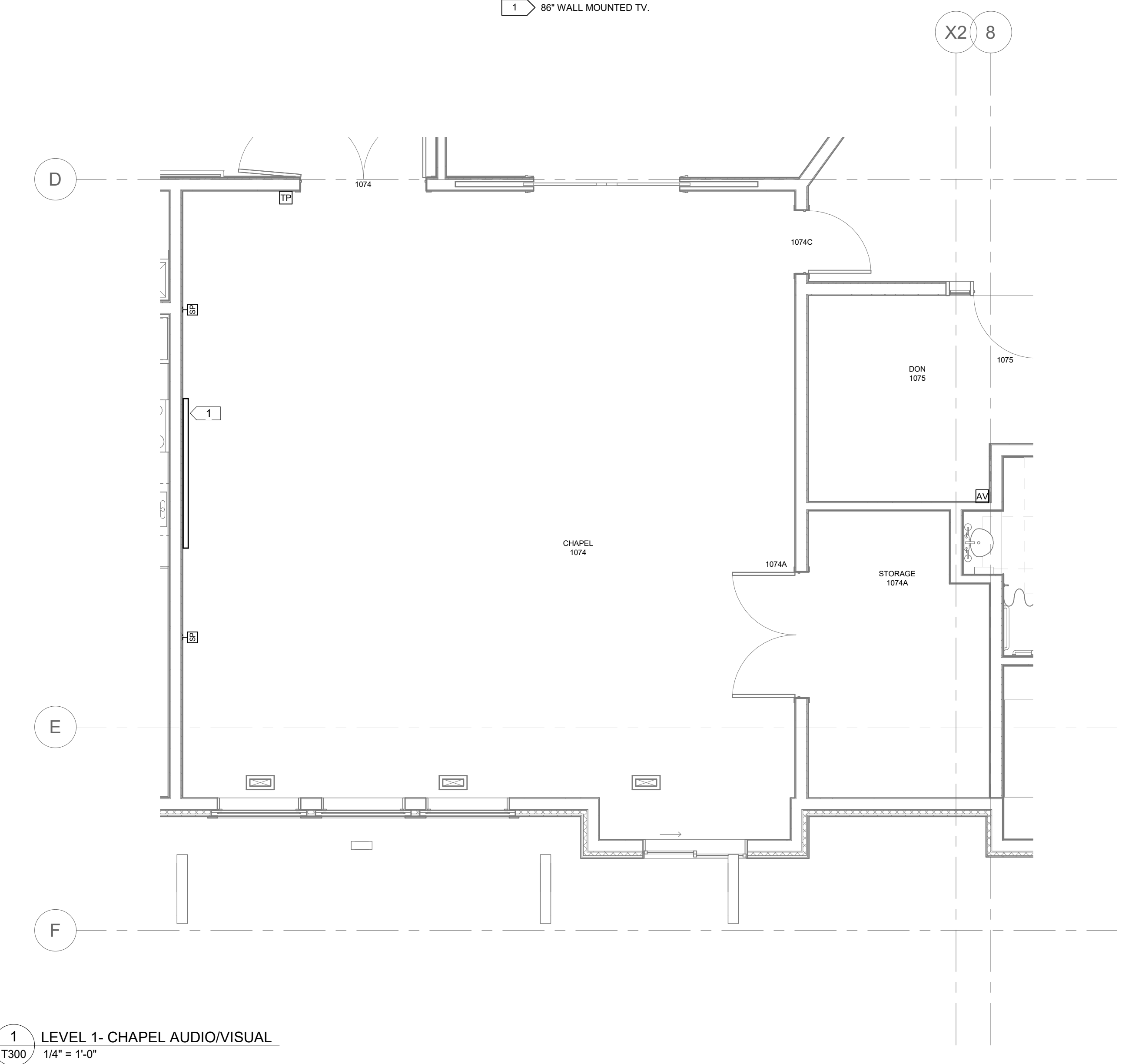
Make SAFETY as part of every plan

PRCNC20240424



2 LEVEL 1- DINING AUDIO/VISUAL  
T300 1/4" = 1'-0"

NUMBERED NOTES



1 LEVEL 1- CHAPEL AUDIO/VISUAL  
T300 1/4" = 1'-0"

AUDIO/VISUAL EQUIPMENT LIST-WESLEY BRADLEY PARK PHASE 2 - 6-2-23 PERMIT SET

Qty per Room	Manufacturer	Model #	Description
<b>CHAPEL</b>			
1	Samsung	QN85Q60BA	85" 4K TV
1	Strong	SM-T-XL	XL Tilt Wall mount
1	TBD		HDMI Wall plate
1	Audix	AP62 C2BP	Dual Receiver with Handeld and body pack
1	Audix	HT7BG3P	Headworn Mic
2	JBL	CBT 50LA-1	Line array column speaker
2	JBL	MTC-CBT-FM	Flush wall mount
1	Binary	B-260-HDMI-2A	Audio Extractor
1	RTI	KA8	8" Touch Screen
1	Allona	AT-HDR-EX-100CEA-RX	HDMI Extender TX,RX
<b>DINING</b>			
5	Sonance	PS-C63RT	Pro Series in-ceiling speaker
1	Sonance	PS-C6R	Metal Rough in bracket (qty 6)
1	Audix	AP62 C2BP	Dual Receiver with Handeld and body pack
1	Audix	HT7BG3P	Headworn Mic
1	Audix	ANTDA4161	Active Directional Antennae
<b>A/V RACK</b>			
1	Strong	SR-WMS-16U	16RU Wall rack
1	LEA	Connect 352	2ch 2x350 amp
1	Symetrix	Jupiter 8	8x8 DSP
1	RTI	XP-6s	XP Based Processor
1	TBD		Network switch
1	Allona	AT-JUNO-451	4x1 HDMI Switcher

**Collins**  
ELECTRICAL + TECHNOLOGY  
278 State Street  
St. Paul, Minnesota 55107-1679  
Telephone (651) 224-2633  
Fax (651) 292-0359  
www.collinsmn.com

I HEREBY CERTIFY THAT THIS PLAN SPECIFICATION OR REPORT WAS PREPARED BY ME OR UNDER MY DIRECT SUPERVISION AND THAT I AM A DULY LICENSED PROFESSIONAL ENGINEER UNDER THE LAWS OF THE STATE OF MINNESOTA REG.#:  
DATE: -

SIGNED:  
DRAWN BY: J. VERDICK  
CHECKED BY: P. MYERS  
DATE: -  
JOB NUMBER:  
FILE NAME: REVIT 2022

REVISIONS		
1	6-2-23	PERMIT SET
2	7-20-23	WiFi LOCATION UPDATE
3	10-16-23	PERMIT SET/DOH SUBMITTAL

**WESLEY BRADLEY PARK 2**  
 PHASE 2 - CARE CENTER  
 707 39TH AVENUE SOUTHEAST  
 PUYALLUP, WASHINGTON 98374

AUDIO/VISUAL AREA PLANS

T300

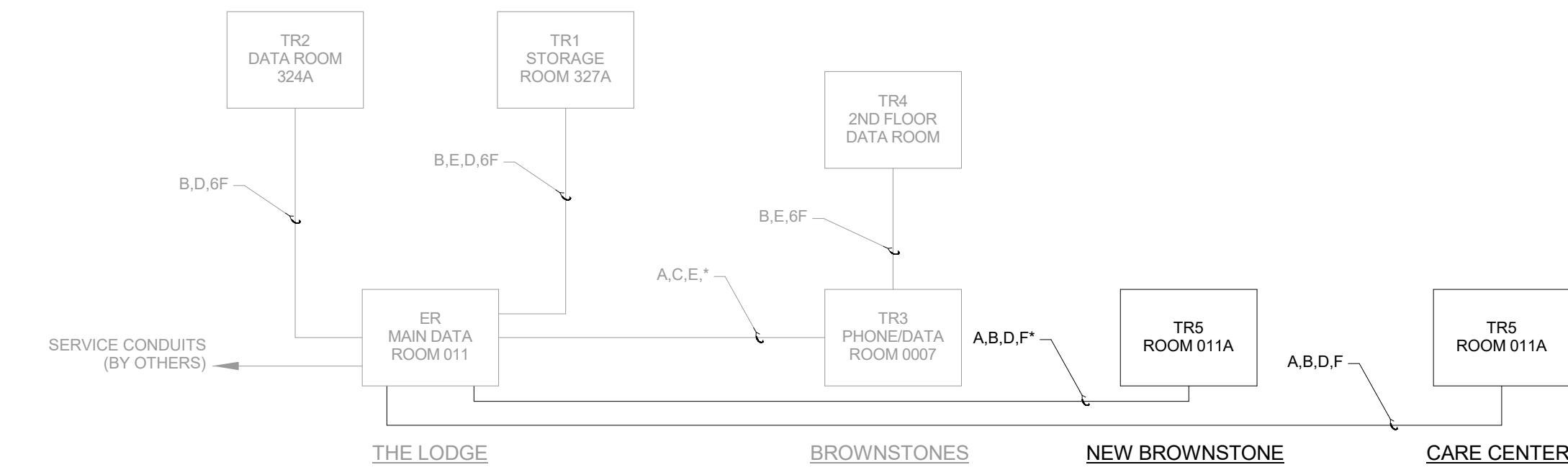


PRCNC20240424

I HEREBY CERTIFY THAT THIS PLAN SPECIFICATION OR REPORT WAS PREPARED BY ME OR UNDER MY DIRECT SUPERVISION AND THAT I AM A DULY LICENSED PROFESSIONAL ENGINEER UNDER THE LAWS OF THE STATE OF MINNESOTA REG. #:

SIGNED:  
DRAWN BY: J. VERDICK  
CHECKED BY: P. MYERS  
DATE: -  
JOB NUMBER:  
FILE NAME: REVIT 2022

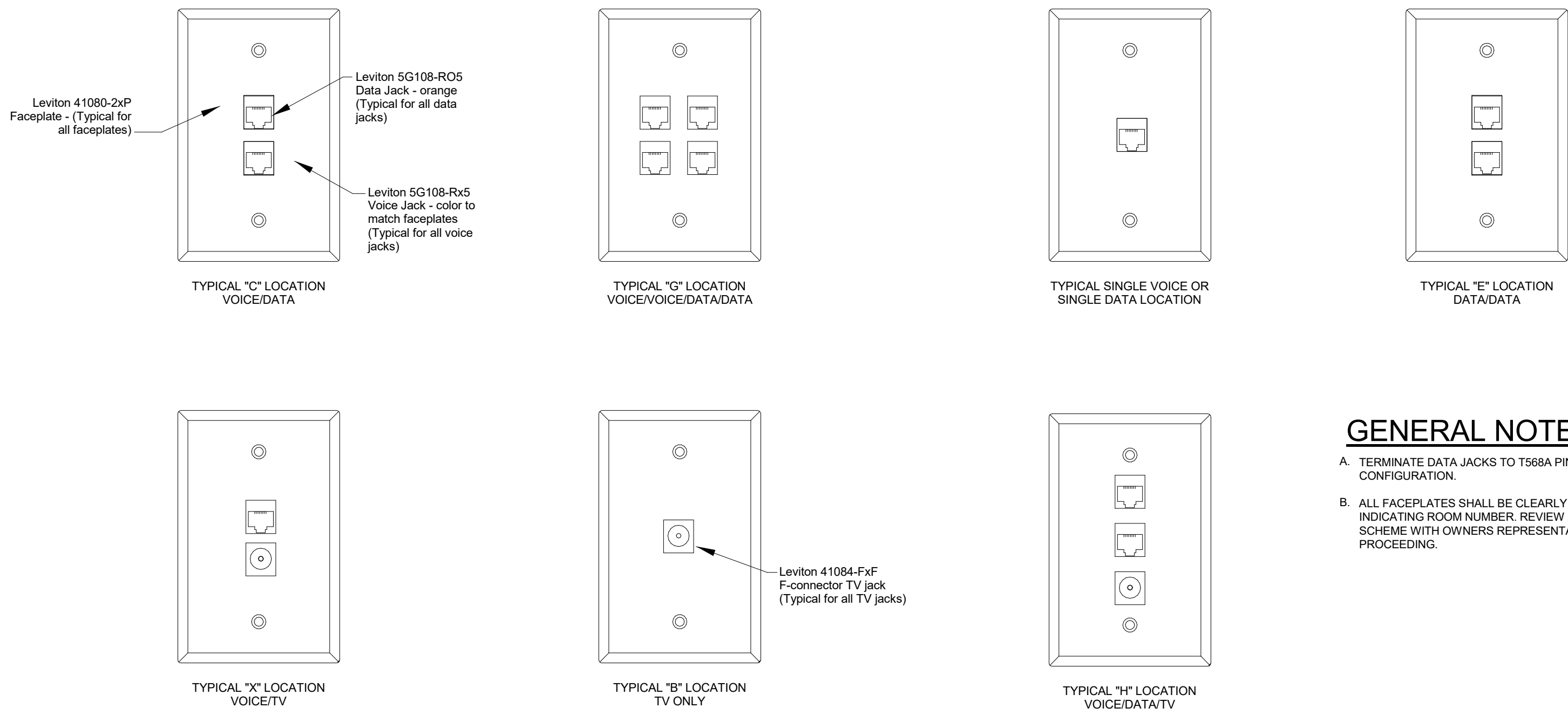
REVISIONS		
1	6-2-23	PERMIT SET
2	7-20-23	WiFi LOCATION UPDATE
3	10-16-23	PERMIT SET/DOH SUBMITTAL



- CABLE LEGEND**
- A - 6 STRAND SM FIBER
  - B - 6 STRAND OM3 FIBER
  - C - 12 STRAND OM3 FIBER
  - D - 100 PAIR COPPER
  - E - 60 PAIR COPPER
  - F - RG11 COAX

- NOTES:**
1. INCLUDE LIGHTNING/SURGE PROTECTED BUILDING ENTRANCE PROTECTION ON BOTH ENDS OF CABLE.
  2. COORDINATE WITH LOCAL CABLE TV PROVIDER FOR THEIR INSTALLATION OF BACKBONE SERVICE CABLES BETWEEN BUILDINGS.

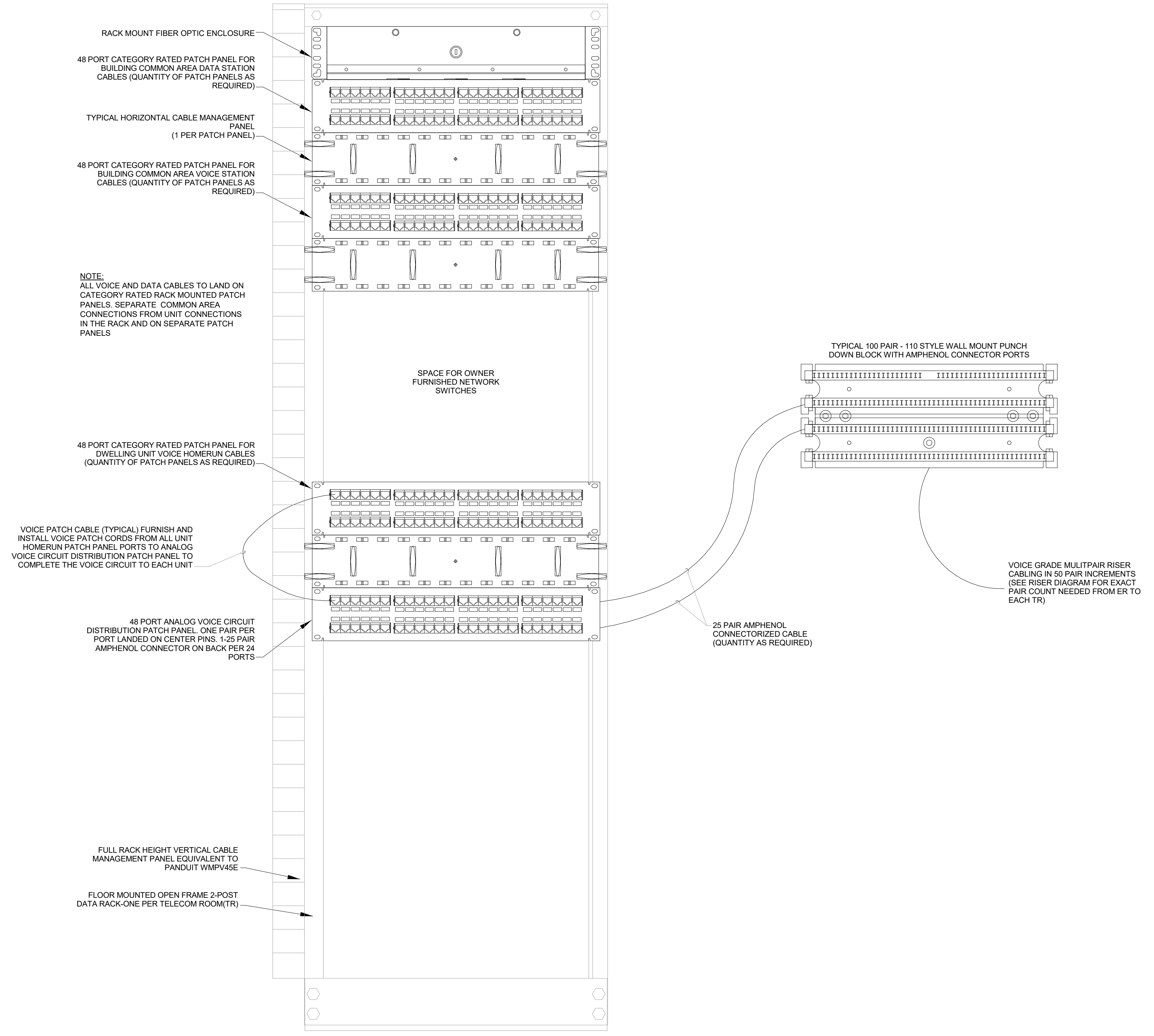
1  
T600  
RISER DIAGRAM



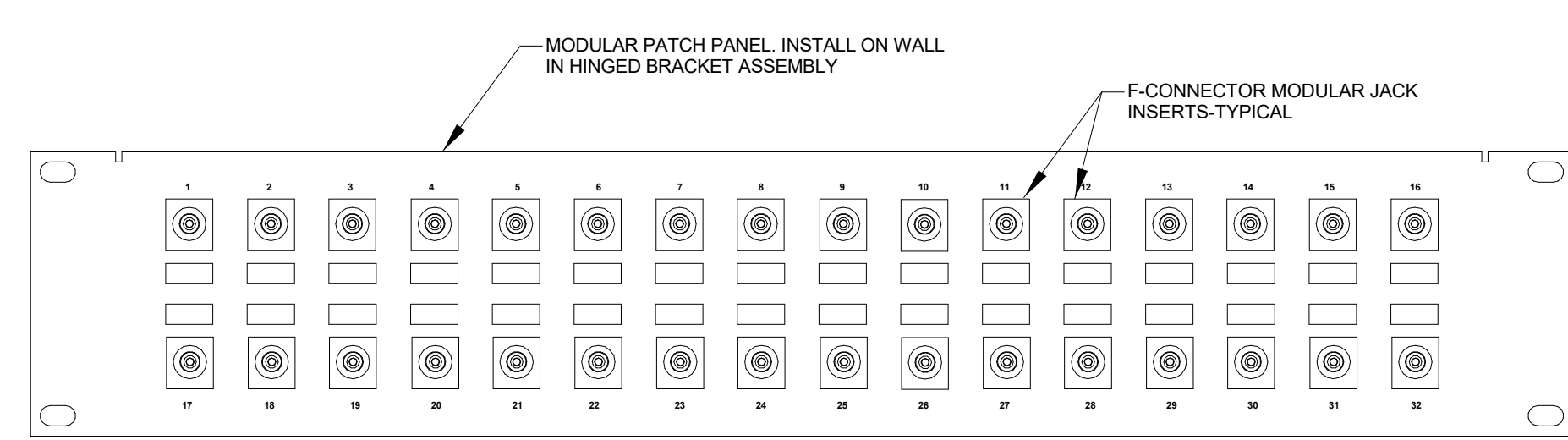
2  
T600  
FACEPLATE TYPES DETAIL

**GENERAL NOTES:**

- A. TERMINATE DATA JACKS TO T568A PINOUT CONFIGURATION
- B. ALL FACEPLATES SHALL BE CLEARLY LABELED INDICATING ROOM NUMBER. REVIEW LABELING SCHEME WITH OWNERS REPRESENTATIVE PRIOR TO PROCEEDING.



4  
T600  
DATA PATCH PANEL AND WALL RACK DETAIL



**GENERAL NOTES:**

- A. TERMINATE ALL STATION COAXIAL CABLES WITH RADIAL CRIMP STYLE F-CONNECTORS. LAND ON PATCH PANEL AND LABEL WITH UNIT NUMBER.
- B. TERMINATE, LABEL AND COIL RG11 RISER COAXIAL CABLES ON WALL ADJACENT TO PATCH PANEL.

3  
T600  
TV PATCH PANEL

**WESLEY BRADLEY PARK 2**  
 PHASE 2 - CARE CENTER  
 707 39TH AVENUE SOUTHEAST  
 PUYALLUP, WASHINGTON 98374

TECHNOLOGY DETAILS

T600



PRCNC20240424

CCTV SCHEDULE-WESLEY HOMES-BRADLEY PARK PHASE 2-CARE CENTER - 6-2-23			
Camera #	Location	Resolution	Notes
1	STAIR ST-CC EXTERIOR		
2	CIRCULATION		
3	CIRCULATION CORRIDOR		
4	SEATING		
5	LAP POOL LOCKER ROOM DOORS		
6	CIRCULATION CORRIDOR		
7	GARAGE		
8	GARAGE ENTRY EXTERIOR		
9	DAYROOM STAIR		
10	MEDS 1103		
11	DINING		
12	COMMONS		
13	EXIT PASSAGEWAY 1062		
14	VESTIBULE 1050		
15	RECEPTION		
16	MEDS 1085		
17	DAYROOM 1092		
18	EXTERIOR AT DRIVE UP		

Pixels Per Foot (PPF)	
30	Visual
45	License plate
100	Facial

Class	Resolution
VGA	640x480
HDTV 720p	1280x720
1.3 MP	1280x1024
HDTV 1080p	1920x1080
2MP	1600x1200
3MP	2048x1536
5MP	2592x1944
10MP	3648x2752

DOOR SECURITY SCHEDULE-WESLEY HOMES-BRADLEY PARK PHASE 2-CARE CENTER - 6-2-23												
Door	Description	Proximity Reader	RF Receiver	Motion REX	Hardware REX	Door Contact	Electric Strike	Guest Entry	Intercom	Electric Lock	Transfer Hinge	Installation Note
0010E	SPA POOL	1		1		2						
0010	SPA POOL	1		1		1						
0017A	MENS LOCKER ROOM	1		1		1						
0018A	WOMENS LOCKER ROOM	1		1		1						
0014E	CIRCULATION	1		1		2						
0100E	SEATING	1		1		2						
0112A	GARAGE ENTRY	1	1	1		1						
ST-CC1	STAIR	2				1						
1103	MEDS 1103	1		1		1						
1065E	DINING	1		1		1						
1063	LOBBY	2		1		2						
1062	EXIT PASSAGEWAY	2				1						
1062E	EXIT PASSAGEWAY			1		1						
1050	VESTIBULE 1050	2		1		2		1				
1085	MEDS 1085	1		1		1						
1092E	DAYROOM	2				1						

Installation notes	
Note 1	Integrate reader controls with motorized door operator. Door operator to release strike when exit paddle used. Enter paddle disabled until after a valid fob read.
Note 2	Emergency Exit only. Configure access control system to report any and all door openings.



I HEREBY CERTIFY THAT THIS PLAN SPECIFICATION OR REPORT WAS PREPARED BY ME OR UNDER MY DIRECT SUPERVISION AND THAT I AM A DULY LICENSED PROFESSIONAL ENGINEER UNDER THE LAWS OF THE STATE OF MINNESOTA  
DATE: -  
REG.#:

SIGNED:  
DRAWN BY: J. VERDICK  
CHECKED BY: P. MYERS  
DATE: -  
JOB NUMBER:  
FILE NAME: REVIT 2022

REVISIONS		
1	6-2-23	PERMIT SET
2	7-20-23	WiFi LOCATION UPDATE
3	10-16-23	PERMIT SET/DOH SUBMITTAL

**WESLEY BRADLEY PARK 2**  
 PHASE 2 - CARE CENTER  
 707 39TH AVENUE SOUTHEAST  
 PUYALLUP, WASHINGTON 98374

TECHNOLOGY SCHEDULES

T700





