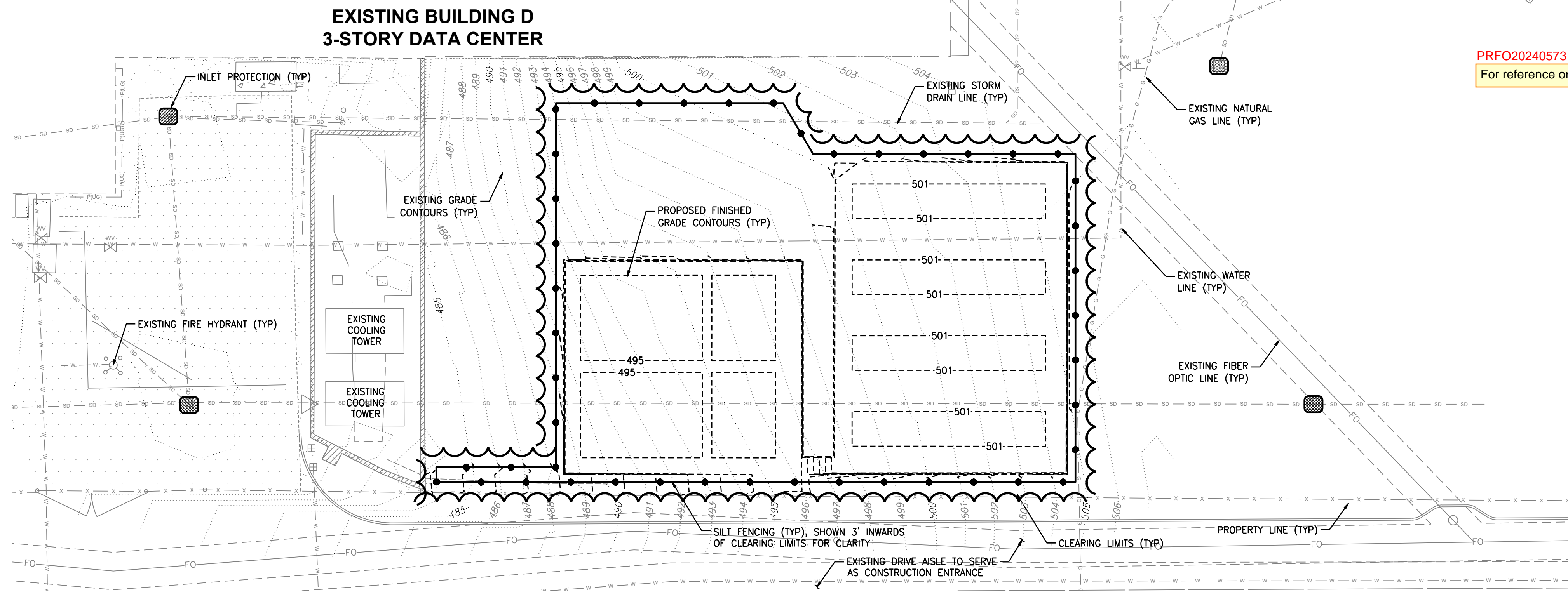


TESC PLAN
FOR

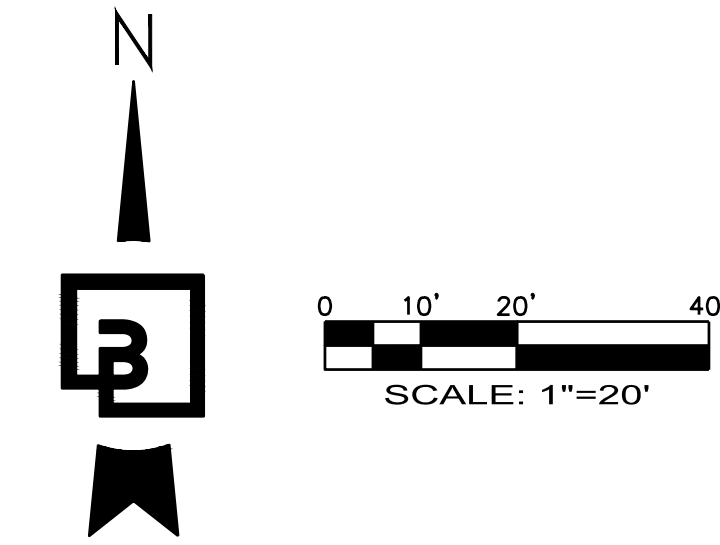
CENTERIS VOLTAGE PARK

A PORTION OF THE NE 1/4, SE 1/4, NW 1/4 & SW 1/4, OF THE SE 1/4 OF SEC. 3, TWN. 19 N, RGE. 4 E, W.M. CITY OF PUYALLUP, PIERCE COUNTY, WASHINGTON

PRFO20240573

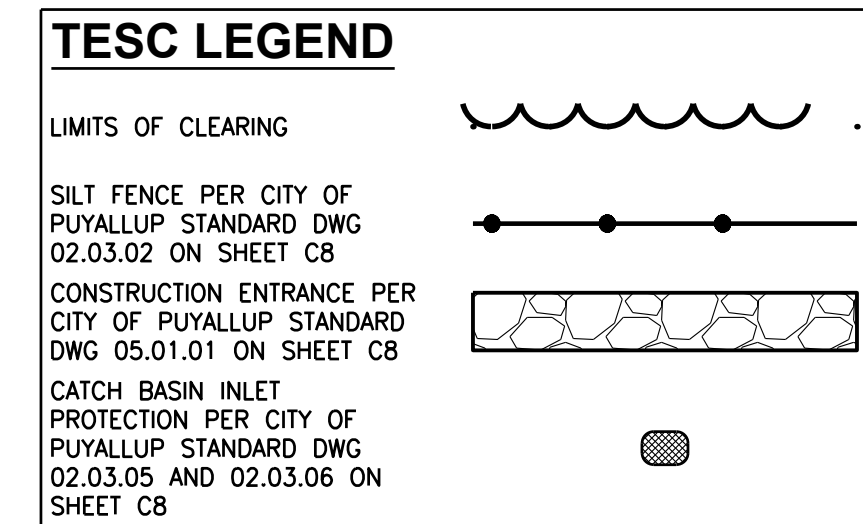
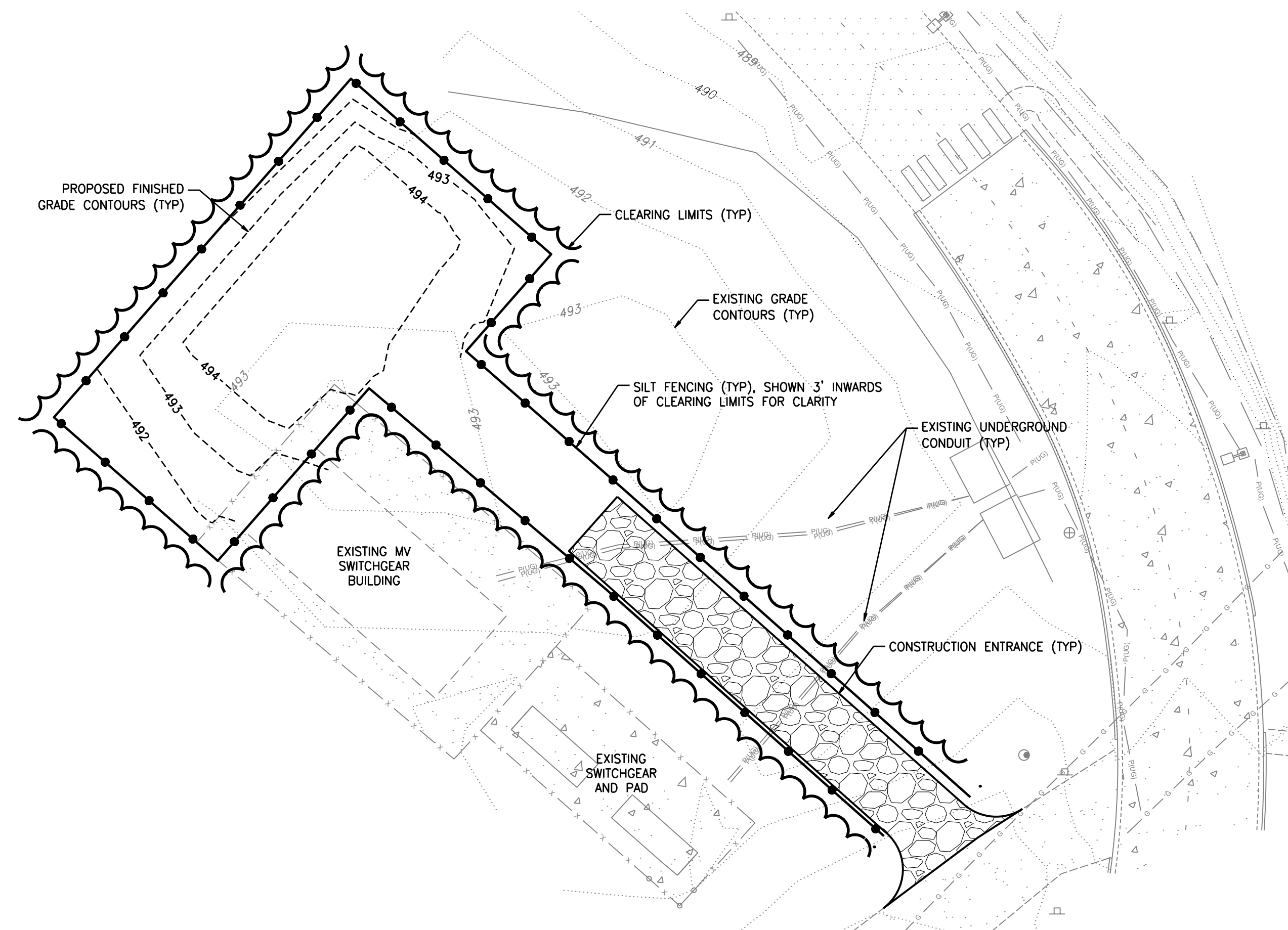


PRFO20240573
For reference only see civil permit.



VOLTAGE PARK - SOUTH UTILITY YARD TESC

SCALE: 1" = 20'



City of Puyallup
Development
Engineering
APPROVED
See permit conditions.
ycharitou
05/09/2024
8:16:44 AM

Refer to the City standard details 02.03.02 & 05.02.01 for typical erosion and sedimentation control methods.

Refer to civil construction permit PRCCP20240183 for all work outside or surrounding the switchgear building foundation.

The City shall not be held liable for any conflicts that arise between the approved building plans and approved civil construction permit since the building permits were issued prior to approval of these plans. Approval of these plans does not constitute an approval of the civil construction permit. The City of Puyallup Engineering Department must be notified by a registered Engineer from the City of Puyallup prior to construction.

VOLTAGE PARK - SUB-STATION TESC

SCALE: 1" = 20'

EROSION CONTROL NOTE

ALL EROSION CONTROL BMPs SHALL COMPLY WITH THE CITY OF PUYALLUP STANDARD DETAILS AND THE 2019 WASHINGTON STATE DEPARTMENT OF ECOLOGY WESTERN WASHINGTON STORMWATER MANUAL. THE PROTECTION FOR THE SLOPES SHALL BE INSTALLED AS SOON AS PRACTICABLE AND PRIOR TO CALLING FOR FINAL APPROVAL. AREAS ADJACENT TO THIS PROJECT ARE CURRENTLY UNDER CONSTRUCTION OR PLANNED FOR CONSTRUCTION IN THE NEAR FUTURE. THE CONTRACTOR IS RESPONSIBLE FOR VERIFYING SITE CONDITIONS PRIOR TO CONSTRUCTION AND NOTIFY THE ENGINEER OF ANY DISCREPANCIES.

DUST CONTROL NOTES

- THE CONTRACTOR SHALL MINIMIZE THE PERIOD OF SOIL EXPOSURE THROUGH THE USE OF TEMPORARY GROUND COVER AND OTHER TEMPORARY STABILIZATION PRACTICES SUCH AS SEEDING, MULCHING, OR EROSION BLANKETS.
- DURING CONSTRUCTION IN THE DRY SEASON, SPRINKLE THE SITE WITH WATER UNTIL THE SURFACE AREA IS WET. REPEAT THE PROCESS AS NEEDED DURING WORK.
- ALL TRUCKS TRANSPORTING FINE MATERIAL TO THE PROJECT SITE MUST BE COVERED TO PREVENT DUST FROM BLOWING FROM THE TRUCKS.

CLEARING NOTES

- SCHEDULE AND LIMIT REMOVAL OF EXISTING VEGETATION AND GROUND COVER TO THE MINIMUM EXTENT FEASIBLE WITHIN THE ACTIVE WORK AREA.
- ALL TOPSOIL (IF FOUND) SHALL REMAIN ON-SITE AND BE UTILIZED FOR SITE RESTORATION FOLLOWING COMPLETION OF GRADING ACTIVITIES.
- THE GEOTECHNICAL ENGINEER SHALL BE ON-SITE DURING ALL STRIPPING AND GRUBBING OPERATIONS TO VERIFY CONDITION OF THE SUBGRADE SOILS AND REMOVAL OF ALL ORGANIC MATERIAL, STUBS, UNCONTROLLED FILL, ECT.
- THE GEOTECHNICAL ENGINEER SHALL OBSERVE AND TEST FILL MATERIAL AS REQUIRED TO CERTIFY THE COMPLETED FILLS.

WET SEASON NOTES

- THE FOLLOWING BMPs SHALL APPLY TO ALL GRADING AND CLEARING ACTIVITY PERFORMED BETWEEN OCTOBER 1 AND MARCH 31:
- GRADING ACTIVITIES AND CONSTRUCTION SHALL BE TIMED AND CONDUCTED IN STAGES TO MINIMIZE SOIL EXPOSURE.
 - EXPOSED SOILS SHALL BE COVERED WITHIN 2 DAYS USING DAM MULCH, SOD, HOG FUEL, PLASTIC OR OTHER APPROVED PROTECTED COVER.
 - THE CONTRACTOR SHALL INSPECT AND MAINTAIN SEDIMENT CONTROL MEASURES DAILY.
 - THE CONTRACTOR SHALL REPLACE AND DAMAGED BMPs AND UPGRADE MEASURES BASED ON WEATHER CONDITIONS.
 - THE CONTRACTOR SHALL REMOVE SEDIMENT ACCUMULATION ONCE DEPTH EXCEEDS 6-INCHES.
 - INSTALL COIR LOG, ROCK OR STRAW BALE CHECK DAMS EVERY 100 FEET ON CENTER ALONG ALL DRAINAGE INTERCEPTOR DITCHES.
 - EROSION CONTROL MATERIALS ARE TO BE STOCKPILED ON SITE PRIOR TO ANY SITE ACTIVITIES.
 - DURING STORM EVENTS, NO ACTIVITY WILL OCCUR ON SITE, EXCEPT WORK ON EROSION CONTROL.

EROSION AND SEDIMENTATION CONTROL BMPs:

- GRADING AND CONSTRUCTION SHALL BE TIMED AND CONDUCTED IN STAGES TO MINIMIZE SOIL EXPOSURE.
- THE CONTRACTOR SHALL PREVENT THE TRANSPORT OF THE SEDIMENT ONTO PAVED SURFACES DURING CONSTRUCTION. IF SEDIMENT IS TRANSFERRED ONTO A PAVED SURFACE, IT SHALL BE THE CONTRACTOR'S RESPONSIBILITY TO CLEAN IT IMMEDIATELY.
- STOCKPILES ARE TO BE LOCATED IN A SAFE AREA AND ADEQUATE COVER WITHIN 24 HOURS TO PREVENT SOIL LOSSES.
- THE CONTRACTOR SHALL MAINTAIN AND REPAIR AS NECESSARY ALL TEMPORARY AND PERMANENT EROSION CONTROL BMPs TO ASSURE CONTINUED PERFORMANCE.
- ADDITIONAL COIR LOG, MULCH COVER, FILTER BARRIERS, AND/OR BALES MAY BE REQUIRED TO PREVENT/MINIMIZE EROSION AND SEDIMENTATION DURING CONSTRUCTION.
- AFTER EACH DAY OF ACTIVITY, ALL IMPACTED STREETS ARE TO BE SWEEPED WITH A STREET SWEEPER.

UTILITY CONFLICT NOTE:

THE CONTRACTOR SHALL BE RESPONSIBLE FOR VERIFYING THE LOCATION, DIMENSION, AND DEPTH OF ALL EXISTING UTILITIES WHETHER SHOWN ON THESE PLANS OR NOT BY POTHOLES THE UTILITIES AND SURVEYING THE HORIZONTAL AND VERTICAL LOCATION PRIOR TO CONSTRUCTION. THIS SHALL INCLUDE CALLING UTILITY LOCATE @ 1-800-424-5555 AND THEN POTHOLES ALL OF THE EXISTING UTILITIES AT LOCATIONS OF NEW UTILITY CROSSINGS TO PHYSICALLY VERIFY WHETHER OR NOT CONFLICTS EXIST. LOCATIONS OF SAID UTILITIES AS SHOWN ON THESE PLANS ARE BASED UPON THE UNVERIFIED PUBLIC INFORMATION AND ARE SUBJECT TO VARIATION. IF CONFLICTS SHOULD OCCUR, THE CONTRACTOR SHALL CONSULT BARGHAUSEN CONSULTING ENGINEERS, INC. TO RESOLVE ALL PROBLEMS PRIOR TO PROCEEDING WITH CONSTRUCTION.

APPROVED
BY: CITY OF PUYALLUP
DEVELOPMENT ENGINEERING
DATE: _____

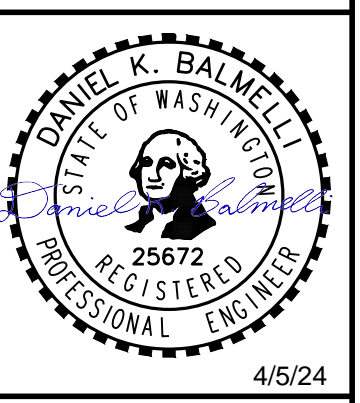
CALL BEFORE YOU DIG:
1-800-424-5555 OR "811"

NOTE: THIS APPROVAL IS VOID AFTER 180 DAYS FROM APPROVAL DATE.
THE CITY WILL NOT BE RESPONSIBLE FOR ERRORS AND/OR OMISSIONS ON THESE PLANS.
FIELD CONDITIONS MAY DICTATE CHANGES TO THESE PLANS AS DETERMINED BY THE DEVELOPMENT ENGINEERING MANAGER.

| No. | Date | By | Ckd. | Appr. | Revision |
|-----|------|----|------|-------|----------|
| | | | | | |

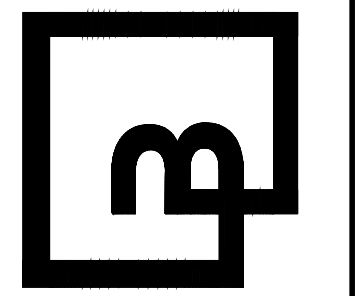
Title:
TESC PLAN
CENTERIS VOLTAGE PARK

For: BENAROYA CAPITAL, LLC
CENTERIS DATA CENTERS
9675 SE 36TH ST, SUITE 115
MERCER ISLAND, WA 98040



| | | |
|---------------|------------------------|-----------------|
| Scale: | Horizontal 1" = 20' | Vertical N/A |
| Designed: KDM | Drawn: KDM | Checked: CMV |
| Approved: DKB | Date: 4/5/24 | |

Barghausen Consulting Engineers, Inc.
18215 72nd Avenue South
Kent, WA 98032
425.251.6222
barghausen.com



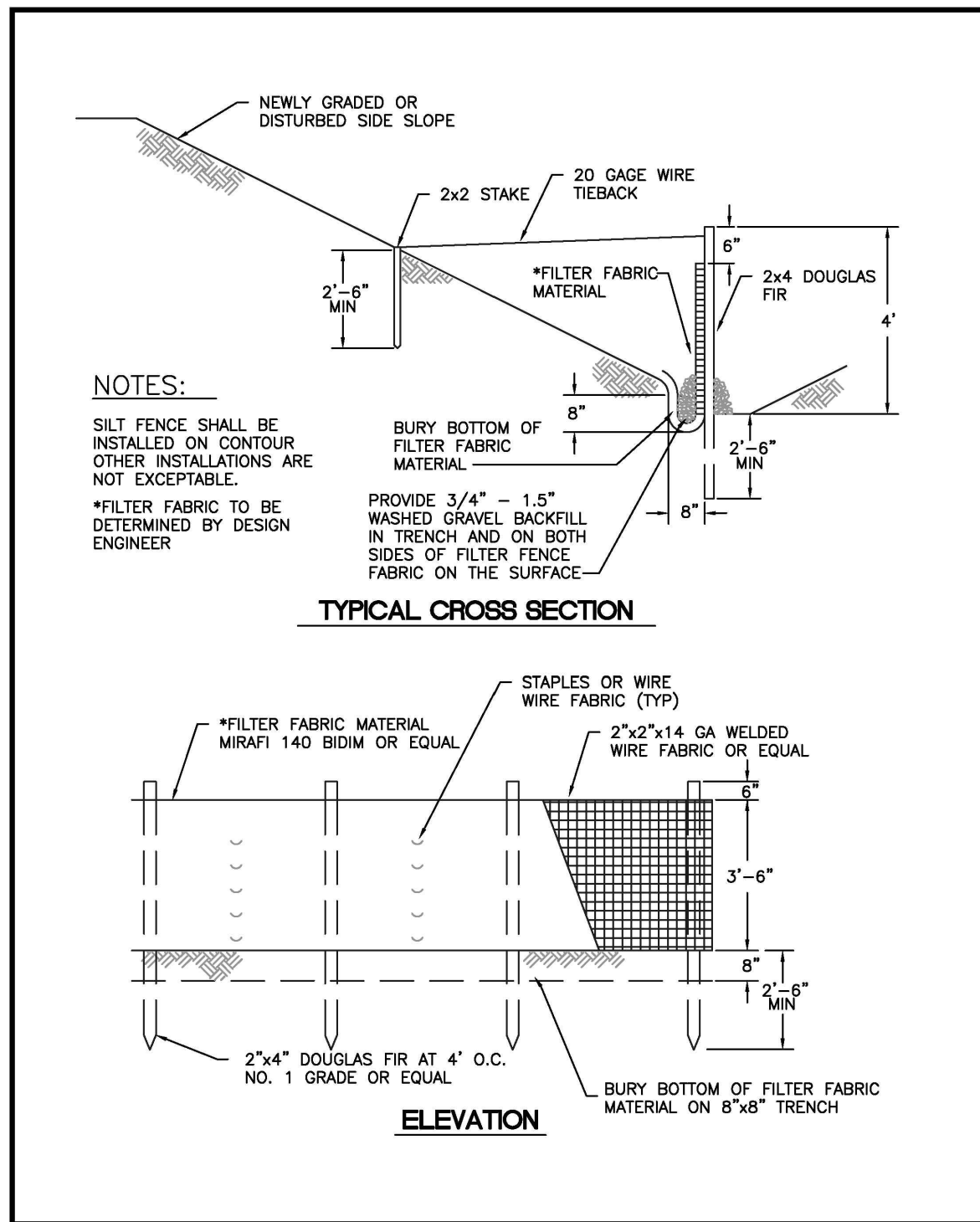
| | |
|---------------------|-------------------|
| Job Number 18111 | Sheet C6 of 20 |
|---------------------|-------------------|

TESC NOTES AND DETAILS
FOR

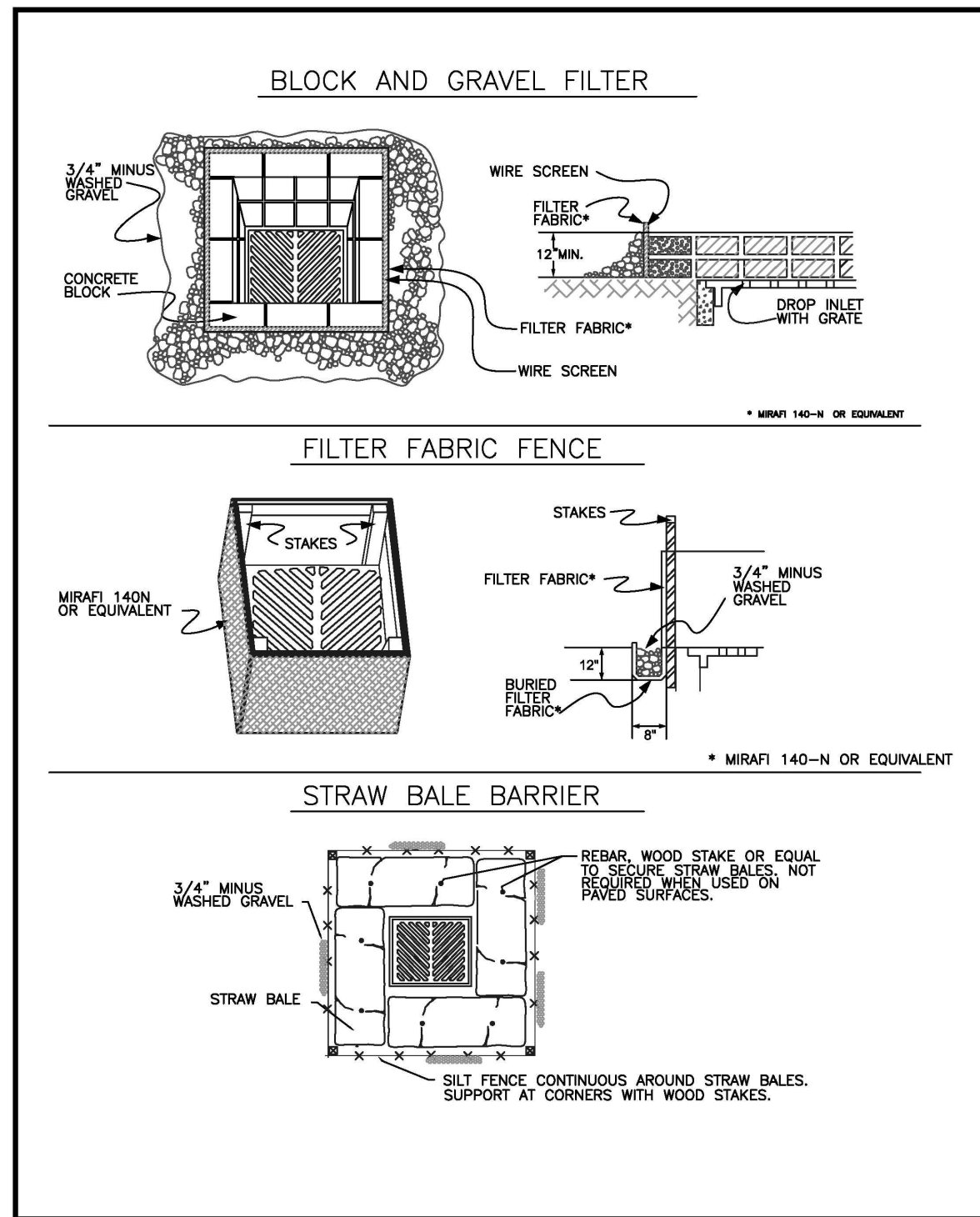
CENTERIS VOLTAGE PARK

A PORTION OF THE NE 1/4, SE 1/4, NW 1/4 & SW 1/4, OF THE SE 1/4 OF SEC. 3, TWN. 19 N, RGE. 4 E, W.M. CITY OF PUYALLUP, PIERCE COUNTY, WASHINGTON

PRFO20240573



| CITY OF PUYALLUP | | SILTATION FENCE | |
|------------------|---------------|-----------------|---------------|
| DESIGNED BY | CHECKED BY | APPROVED BY | CITY STANDARD |
| DATE APPROVED | DATE APPROVED | SCALE | DATE |
| 02.03.02 | | | |



| CITY OF PUYALLUP | | STORM DRAIN BARRIERS | |
|------------------|---------------|----------------------|---------------|
| DESIGNED BY | CHECKED BY | APPROVED BY | CITY STANDARD |
| DATE APPROVED | DATE APPROVED | SCALE | DATE |
| 02.03.05 | | | |

CONDITIONS WHERE PRACTICE APPLIES

- BLOCK AND GRAVEL FILTER - APPLICABLE FOR AREAS GREATER THAN 5% SLOPE.
- FILTER FABRIC FENCE - APPLICABLE WHERE THE INLET DRAINS A RELATIVELY SMALL (ONE ACRE OR LESS) AND FLAT AREA (LESS THAN 5% SLOPE).
- STRAW BALE BARRIER - APPLICABLE WHERE INLET DRAINS A RELATIVELY FLAT DISTURBED AREA (LESS THAN 5% SLOPE) IN WHICH SHEET FLOW (NOT EXCEEDING 0.5 FT/SEC) OCCURS. BARRIERS OF THIS TYPE SHOULD NOT BE PLACED AROUND INLETS RECEIVING CONCENTRATED FLOWS SUCH AS THOSE ALONG MAJOR STREETS AND HIGHWAYS.

1. BLOCK AND GRAVEL FILTER - INSTALLATION PROCEDURE

- PLACE WIRE MESH OVER THE DROP INLET SO THAT THE WIRE EXTENDS A MINIMUM OF ONE FOOT BEYOND EACH SIDE OF THE INLET STRUCTURE. USE WIRE SCREEN WITH 1/2-INCH OPENINGS. IF MORE THAN ONE STRIP OF MESH IS NECESSARY, OVERLAP THE STRIPS. PLACE FILTER FABRIC OVER WIRE MESH.
- PLACE CONCRETE BLOCKS LENGTHWISE ON THEIR SIDES IN A SINGLE ROW AROUND THE PERIMETER OF THE INLET. SO THAT THE OPEN ENDS FACE OUTWARD, NOT UPWARD. THE ENDS OF ADJACENT BLOCKS SHOULD ABUT. THE HEIGHT OF THE BARRIER CAN BE VARYING, DEPENDING ON DESIGN NEEDS. BLOCKS SHOULD BE AT LEAST 12-INCHES HIGH BUT NO GREATER THAN 24-INCHES HIGH.
- PLACE WIRE SCREEN OVER THE OVERSIDE VERTICAL FACE (OPEN END) OF THE CONCRETE BLOCKS TO PREVENT STONES FROM BEING WASHED THROUGH THE BLOCKS. USE WIRE SCREEN WITH 1/2-INCH OPENINGS.
- PILE STONES AGAINST THE WIRE MESH TO THE TOP OF THE BLOCKS. USE 3/4" MINUS WASHED GRAVEL.

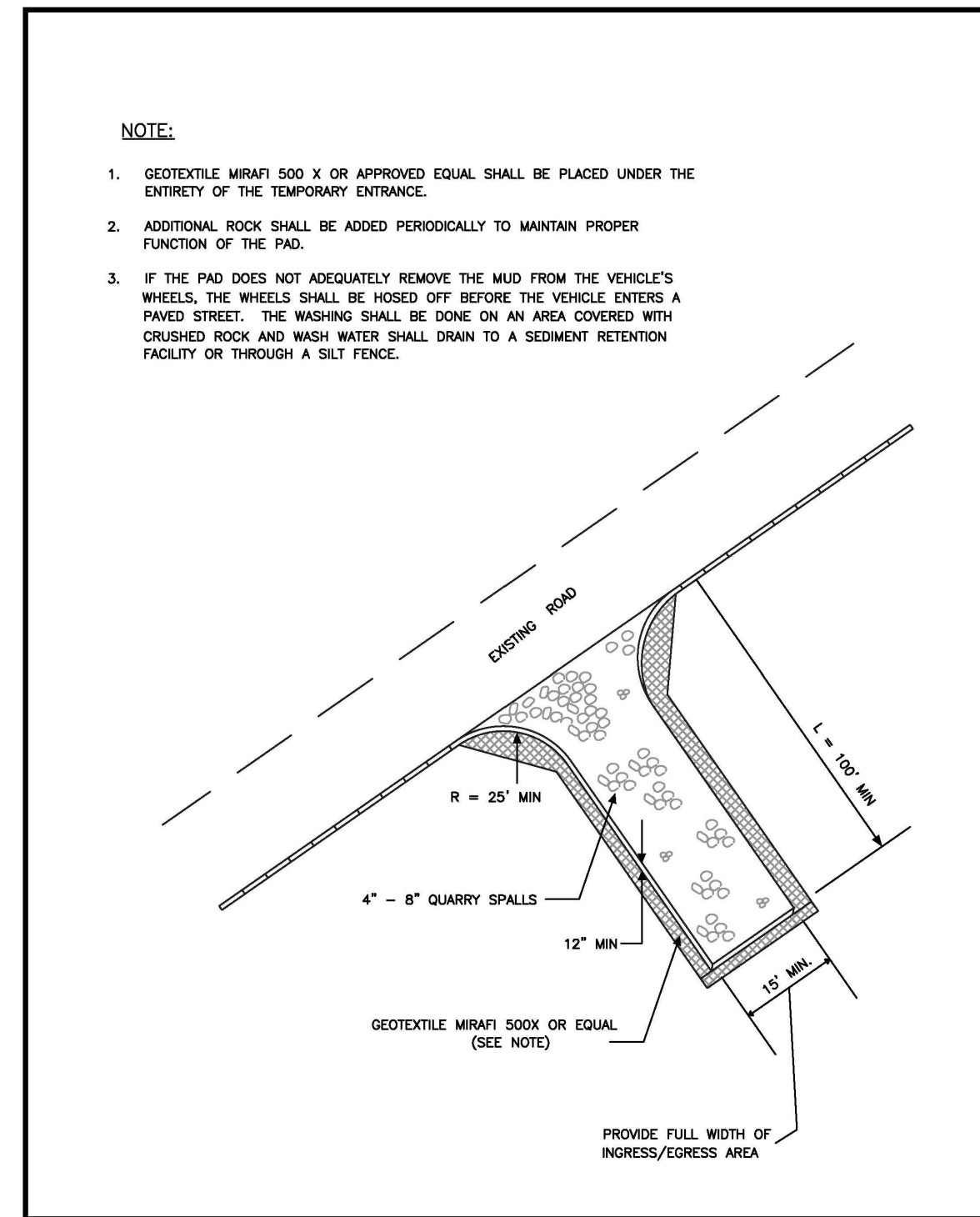
2. FILTER FABRIC FENCE - INSTALLATION PROCEDURE

- PLACE 2-INCH BY 2-INCH WOODEN STAKES AROUND THE PERIMETER OF THE INLET A MAXIMUM OF 3 FEET APART AND DRIVE THEM AT LEAST 8-INCHES INTO THE GROUND. THE STAKES MUST BE AT LEAST 3 FEET LONG.
- EXCAVATE A TRENCH APPROXIMATELY 8-INCHES WIDE AND 12-INCHES DEEP AROUND THE OUTSIDE PERIMETER OF THE STAKES.
- STAPLE THE FILTER FABRIC TO THE WOODEN STAKES SO THAT 32-INCHES OF THE FABRIC EXTENDS AND CAN BE FORMED INTO THE TRENCH, AND USE HEAVY-DUTY WIRE STAPLES AT LEAST 1/2-INCHES LONG.
- BACKFILL THE TRENCH WITH 3/4-INCH MINUS WASHED GRAVEL ALL THE WAY AROUND.

3. STRAW BALE BARRIER - INSTALLATION PROCEDURE

- EXCAVATE A 4-INCH DEEP TRENCH AROUND THE INLET. MAKE THE TRENCH AS WIDE AS A STRAW BALE.
- ORIENT STRAW BALES WITH THE BINDINGS AROUND THE SIDES OF THE BALES RATHER THAN OVER AND UNDER THE BALES.
- PLACE BALES LENGTHWISE AROUND THE INLET AND PRESS THE ENDS OF ADJACENT BALES SECURELY IN PLACE.
- DRIVE TWO 2-INCH BY 2-INCH STAKES THROUGH EACH BALE TO ANCHOR THE BALE SECURELY IN PLACE.
- BACKFILL THE EXCAVATED SOIL AND COMPACT IT AGAINST THE BALE.
- WEDGE LOOSE STRAW BETWEEN BALES TO PREVENT WATER FROM FLOWING BETWEEN BALES.

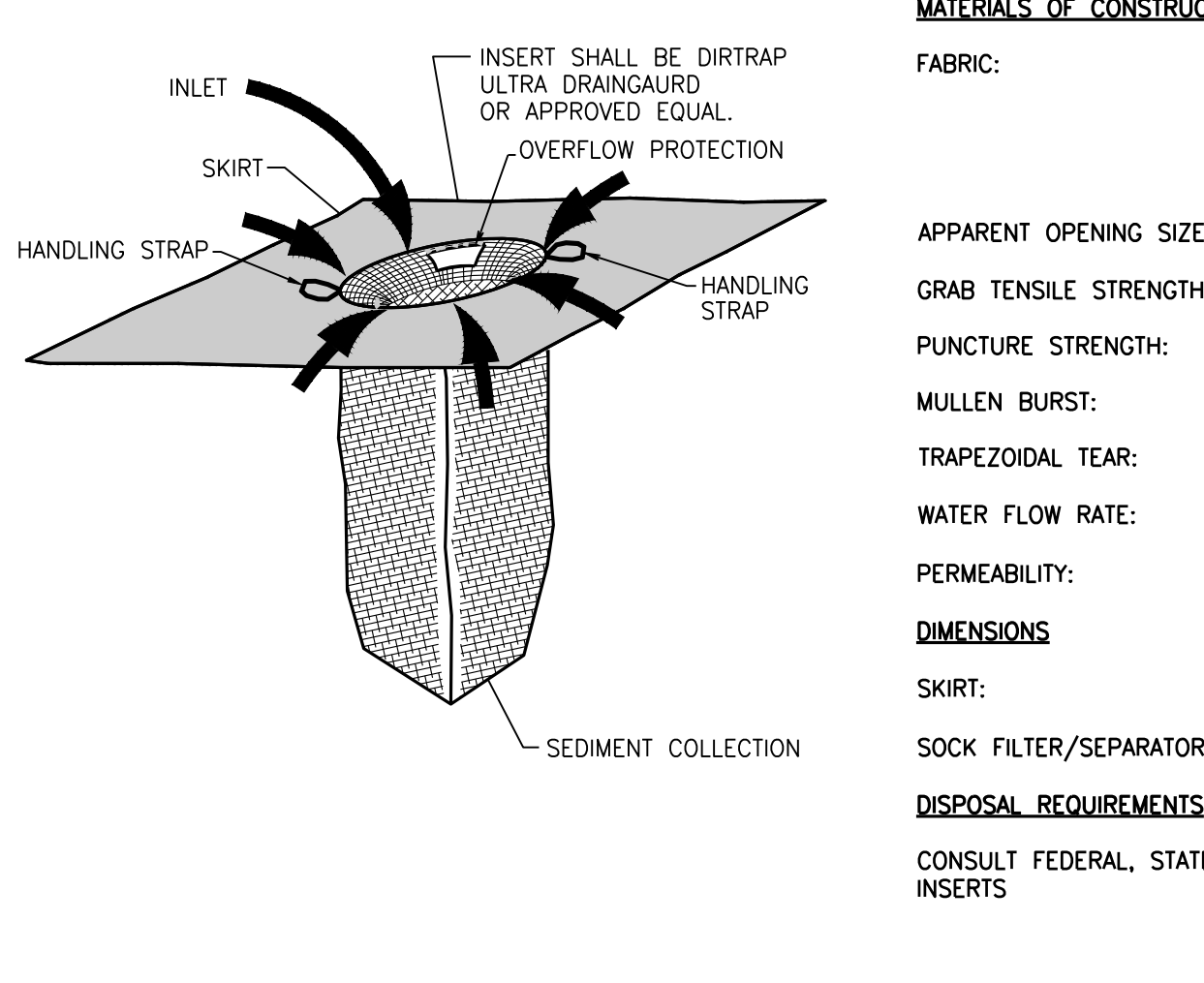
| CITY OF PUYALLUP | | STORM DRAIN BARRIERS NOTES | |
|------------------|---------------|----------------------------|---------------|
| DESIGNED BY | CHECKED BY | APPROVED BY | CITY STANDARD |
| DATE APPROVED | DATE APPROVED | SCALE | DATE |
| 02.03.06 | | | |



| CITY OF PUYALLUP | | TEMPORARY CONSTRUCTION ENTRANCE | |
|------------------|---------------|---------------------------------|---------------|
| DESIGNED BY | CHECKED BY | APPROVED BY | CITY STANDARD |
| DATE APPROVED | DATE APPROVED | SCALE | DATE |
| 05.01.01 | | | |

- ALL LIMITS OF CLEARING AND AREAS OF VEGETATION PRESERVATION AS DESCRIBED ON THE PLANS SHALL BE CLEARLY FLAGGED IN THE FIELD AND OBSERVED DURING CONSTRUCTION.
- ALL REQUIRED SEDIMENTATION AND EROSION CONTROL FACILITIES MUST BE CONSTRUCTED AND IN OPERATION PRIOR TO ANY LAND CLEARING AND/OR OTHER CONSTRUCTION TO ENSURE THAT SEDIMENT LADEN WATER DOES NOT ENTER THE NATURAL DRAINAGE SYSTEM. THE CONTRACTOR SHALL SCHEDULE AN INSPECTION OF THE EROSION CONTROL FACILITIES PRIOR TO ANY LAND CLEARING AND/OR CONSTRUCTION. ALL EROSION AND SEDIMENT FACILITIES SHALL BE MAINTAINED IN A SATISFACTORY CONDITION AS DETERMINED BY THE CITY, UNTIL SUCH TIME THAT CLEARING AND/OR CONSTRUCTION IS COMPLETED AND THE POTENTIAL FOR ON-SITE EROSION HAS PASSED. THE IMPLEMENTATION, MAINTENANCE, REPLACEMENT, AND ADDITIONS TO THE EROSION AND SEDIMENTATION CONTROL SYSTEMS SHALL BE THE RESPONSIBILITY OF THE PERMITEE.
- THE EROSION AND SEDIMENTATION CONTROL SYSTEM FACILITIES DEPICTED ON THESE PLANS ARE INTENDED TO BE MINIMUM REQUIREMENTS TO MEET ANTICIPATED SITE CONDITIONS. AS CONSTRUCTION PROGRESSES AND UNEXPECTED OR SEASONAL CONDITIONS DICTATE, FACILITIES WILL BE NECESSARY TO ENSURE COMPLETE SILTATION CONTROL ON THE SITE. DURING THE COURSE OF CONSTRUCTION, IT SHALL BE THE OBLIGATION AND RESPONSIBILITY OF THE PERMITEE TO ADDRESS ANY NEW CONDITIONS THAT MAY BE CREATED BY HIS ACTIVITIES AND TO PROVIDE ADDITIONAL FACILITIES, OVER AND ABOVE THE MINIMUM REQUIREMENTS, AS MAY BE NEEDED TO PROTECT ADJACENT PROPERTIES, SENSITIVE AREAS, NATURAL WATER COURSES, AND/OR STORM DRAINAGE SYSTEMS.
- APPROVAL OF THESE PLANS IS FOR GRADING, TEMPORARY DRAINAGE, EROSION AND SEDIMENTATION CONTROL ONLY. IT DOES NOT CONSTITUTE AN APPROVAL OF PERMANENT STORM DRAINAGE DESIGN, SIZE OR LOCATION OF PIPES, RESTRICTORS, CHANNELS, OR RETENTION FACILITIES.
- ANY DISTURBED AREA WHICH HAS BEEN STRIPPED OF VEGETATION AND WHERE NO FURTHER WORK IS ANTICIPATED FOR A PERIOD OF 30 DAYS OR MORE, MUST BE IMMEDIATELY STABILIZED WITH MULCHING, GRASS PLANTING, OR OTHER APPROVED EROSION CONTROL TREATMENT APPLICABLE TO THE TIME OF YEAR IN QUESTION. GRASS SEEDING ALONE WILL BE ACCEPTABLE ONLY DURING THE MONTHS OF APRIL THROUGH SEPTEMBER INCLUSIVE. SEEDING MAY PROCEED OUTSIDE THE SPECIFIED TIME PERIOD WHENEVER IT IS IN THE INTEREST OF THE PERMITEE BUT MUST BE AUGMENTED WITH MULCHING, NETTING, OR OTHER TREATMENT APPROVED BY THE CITY.
- IN CASE EROSION OR SEDIMENTATION OCCURS TO ADJACENT PROPERTIES, ALL CONSTRUCTION WORK WITHIN THE DEVELOPMENT THAT WILL FURTHER AGGRAVATE THE SITUATION MUST CEASE, AND THE OWNER/CONTRACTOR WILL IMMEDIATELY COMMENCE RESTORATION METHODS. RESTORATION ACTIVITY WILL CONTINUE UNTIL SUCH TIME AS THE AFFECTED PROPERTY OWNER IS SATISFIED.
- NO TEMPORARY OR PERMANENT STOCKPILING OF MATERIALS OR EQUIPMENT SHALL OCCUR WITHIN CRITICAL AREAS OR ASSOCIATED BUFFERS, OR THE CRITICAL ROOT ZONE FOR VEGETATION PROPOSED FOR RETENTION.

| CITY OF PUYALLUP | | GRADING, EROSION, AND SEDIMENTATION CONTROL NOTES | |
|------------------|---------------|---|---------------|
| DESIGNED BY | CHECKED BY | APPROVED BY | CITY STANDARD |
| DATE APPROVED | DATE APPROVED | SCALE | DATE |
| 05.02.01 | | | |



NOTES:

MATERIALS OF CONSTRUCTION

FABRIC:

NEEDLE PUNCHED NON-WOVEN GEOTEXTILE MATERIAL. FABRIC IS RESISTANT TO ULTRAVIOLET AND BIOLOGICAL DEGRADATION AND A BROAD RANGE OF CHEMICALS.

APPARENT OPENING SIZE (AOS): 80 US STANDARD SIEVE (0.180 MM)

GRAB TENSILE STRENGTH: 200 LBS

PUNCTURE STRENGTH: 130 LBS

MULLEN BURST: 400 PSI

TRAPEZOIDAL TEAR: 85 LBS

WATER FLOW RATE: 110 GPM/FT²

PERMEABILITY: 0.38 CM/SECOND

DIMENSIONS

SKIRT: 24" x 36"

SOCK FILTER/SEPARATOR: 10" D x 24" L

DISPOSAL REQUIREMENTS

CONSULT FEDERAL, STATE, AND LOCAL REGULATIONS FOR DISPOSAL OF INSERTS

| CITY OF PUYALLUP | | STORM DRAIN BARRIERS | |
|------------------|---------------|----------------------|---------------|
| DESIGNED BY | CHECKED BY | APPROVED BY | CITY STANDARD |
| DATE APPROVED | DATE APPROVED | SCALE | DATE |
| 02.03.05 | | | |

CITY OF PUYALLUP GRADING EROSION AND SEDIMENTATION CONTROL NOTES

- ALL WORK IN CITY RIGHT-OF-WAY REQUIRES A PERMIT FROM THE CITY OF PUYALLUP. PRIOR TO ANY WORK COMMENCING, THE GENERAL CONTRACTOR SHALL ARRANGE FOR A PRECONSTRUCTION MEETING AT THE DEVELOPMENT SERVICES CENTER TO BE ATTENDED BY ALL CONTRACTORS THAT WILL PERFORM WORK SHOWN ON THE ENGINEERING PLANS. REPRESENTATIVES FROM ALL APPLICABLE UTILITY COMPANIES, THE PROJECT OWNER AND APPROPRIATE CITY STAFF. CONTACT ENGINEERING SERVICES TO SCHEDULE THE MEETING (253) 841-5568. THE CONTRACTOR IS RESPONSIBLE TO HAVE THEIR OWN APPROVED SET OF PLANS AT THE MEETING.
- AFTER COMPLETION OF ALL ITEMS SHOWN ON THESE PLANS AND BEFORE ACCEPTANCE OF THE PROJECT, THE CONTRACTOR SHALL OBTAIN A "PUNCH LIST" PREPARED BY THE CITY'S INSPECTOR DETAILING REMAINING ITEMS OF WORK TO BE COMPLETED. ALL ITEMS OF WORK SHOWN ON THESE PLANS SHALL BE COMPLETED TO THE SATISFACTION OF THE CITY PRIOR TO ACCEPTANCE OF THE WATER SYSTEM AND PROVISION OF SANITARY SEWER SERVICE.
- ALL MATERIALS AND WORKMANSHIP SHALL CONFORM TO THE STANDARD SPECIFICATIONS FOR ROAD, BRIDGE, AND MUNICIPAL CONSTRUCTION (HEREINAFTER REFERRED TO AS THE "STANDARD SPECIFICATIONS"), WASHINGTON STATE DEPARTMENT OF TRANSPORTATION AND AMERICAN PUBLIC WORKS ASSOCIATION, WASHINGTON STATE CHAPTER, LATEST EDITION, UNLESS SUPERSEDED OR AMENDED BY THE CITY OF PUYALLUP CITY STANDARDS FOR PUBLIC WORKS ENGINEERING AND CONSTRUCTION (HEREINAFTER REFERRED TO AS THE "CITY STANDARDS").
- A COPY OF THESE APPROVED PLANS AND APPLICABLE CITY DEVELOPER SPECIFICATIONS AND DETAILS SHALL BE ON SITE DURING CONSTRUCTION.
- ANY REVISIONS MADE TO THESE PLANS MUST BE REVIEWED AND APPROVED BY THE DEVELOPER'S ENGINEER AND THE CITY ENGINEER PRIOR TO ANY IMPLEMENTATION IN THE FIELD. THE CITY SHALL NOT BE RESPONSIBLE FOR ANY ERRORS AND/OR OMISSIONS ON THESE PLANS.
- THE CONTRACTOR SHALL HAVE ALL UTILITIES VERIFIED ON THE GROUND PRIOR TO ANY CONSTRUCTION. CALL (811) AT LEAST TWO WORKING DAYS HOURS IN ADVANCE. THE OWNER AND HIS/HER ENGINEER SHALL BE CONTACTED IMMEDIATELY IF A CONFLICT EXISTS.
- ALL LIMITS OF CLEARING AND AREAS OF VEGETATION PRESERVATION AS DESCRIBED ON THE PLANS SHALL BE CLEARLY FLAGGED IN THE FIELD AND OBSERVED DURING CONSTRUCTION.
- ALL REQUIRED SEDIMENTATION AND EROSION CONTROL FACILITIES MUST BE CONSTRUCTED AND IN OPERATION PRIOR TO ANY LAND CLEARING AND/OR OTHER CONSTRUCTION TO ENSURE THAT SEDIMENT LADEN WATER DOES NOT ENTER THE NATURAL DRAINAGE SYSTEM. THE CONTRACTOR SHALL SCHEDULE AN INSPECTION OF THE EROSION CONTROL

| CITY OF PUYALLUP | | TEMPORARY CONSTRUCTION ENTRANCE | |
|------------------|---------------|---------------------------------|---------------|
| DESIGNED BY | CHECKED BY | APPROVED BY | CITY STANDARD |
| DATE APPROVED | DATE APPROVED | SCALE | DATE |
| 05.01.01 | | | |

| CITY OF PUYALLUP | | TEMPORARY CONSTRUCTION ENTRANCE | |
|------------------|---------------|---------------------------------|---------------|
| DESIGNED BY | CHECKED BY | APPROVED BY | CITY STANDARD |
| DATE APPROVED | DATE APPROVED | SCALE | DATE |
| 05.01.01 | | | |

UTILITY CONFLICT NOTE:

THE CONTRACTOR SHALL BE RESPONSIBLE FOR VERIFYING THE LOCATION, DIMENSION, AND DEPTH OF ALL EXISTING UTILITIES WHETHER SHOWN ON THESE PLANS OR NOT BY POTHOLES THE UTILITIES AND SURVEYING THE HORIZONTAL AND VERTICAL LOCATION PRIOR TO CONSTRUCTION. THIS SHALL INCLUDE CALLING UTILITY LOCATE @ 1-800-424-5555 AND THEN POTHOLES ALL OF THE EXISTING UTILITIES AT LOCATIONS OF NEW UTILITY CROSSINGS TO PHYSICALLY VERIFY WHETHER OR NOT CONFLICTS EXIST. LOCATIONS OF SAID UTILITIES AS SHOWN ON THESE PLANS ARE BASED UPON THE UNVERIFIED PUBLIC INFORMATION AND ARE SUBJECT TO VARIATION. IF CONFLICTS SHOULD OCCUR, THE CONTRACTOR SHALL CONSULT BARGHAUSEN CONSULTING ENGINEERS, INC. TO RESOLVE ALL PROBLEMS PRIOR TO PROCEEDING WITH CONSTRUCTION.

| CITY OF PUYALLUP | | TEMPORARY CONSTRUCTION ENTRANCE | |
|------------------|---------------|---------------------------------|---------------|
| DESIGNED BY | CHECKED BY | APPROVED BY | CITY STANDARD |
| DATE APPROVED | DATE APPROVED | SCALE | DATE |
| 05.01.01 | | | |

| CITY OF PUYALLUP | | TEMPORARY CONSTRUCTION ENTRANCE | |
|------------------|---------------|---------------------------------|---------------|
| DESIGNED BY | CHECKED BY | APPROVED BY | CITY STANDARD |
| DATE APPROVED | DATE APPROVED | SCALE | DATE |
| 05.01.01 | | | |

APPROVED

BY: _____
CITY OF PUYALLUP
DEVELOPMENT ENGINEERING

DATE: _____

NOTE: THIS APPROVAL IS VOID AFTER 180 DAYS FROM APPROVAL DATE. THE CITY WILL NOT BE RESPONSIBLE FOR ERRORS AND/OR OMISSIONS ON THESE PLANS. FIELD CONDITIONS MAY DICTATE CHANGES TO THESE PLANS AS DETERMINED BY THE DEVELOPMENT ENGINEERING MANAGER.

| CITY OF PUYALLUP | | TEMPORARY CONSTRUCTION ENTRANCE | |
|------------------|---------------|---------------------------------|---------------|
| DESIGNED BY | CHECKED BY | APPROVED BY | CITY STANDARD |
| DATE APPROVED | DATE APPROVED | SCALE | DATE |
| 05.01.01 | | | |

| CITY OF PUYALLUP | | TEMPORARY CONSTRUCTION ENTRANCE | |
|------------------|---------------|---------------------------------|---------------|
| DESIGNED BY | CHECKED BY | APPROVED BY | CITY STANDARD |
| DATE APPROVED | DATE APPROVED | SCALE | DATE |
| 05.01.01 | | | |

TESC NOTES AND DETAILS

CENTERIS VOLTAGE PARK

Title: _____

For: BENAROYA CAPITAL, LLC
CENTERIS DATA CENTERS
9675 SE 36TH ST, SUITE 115
MERCER ISLAND, WA 98040

Scale: Horizontal N/A, Vertical N/A

Designed: KDM, Drawn: KDM, Checked: CNW, Approved: DKB, Date: 4/5/24

Barghausen Consulting Engineers, Inc.
18215 72nd Avenue South
Kent, WA 98032
425.251.6222
barghausen.com

Job Number: 18111

Sheet: C8 of 20

APPROVED

BY: _____
CITY OF PUYALLUP
DEVELOPMENT ENGINEERING

DATE: _____

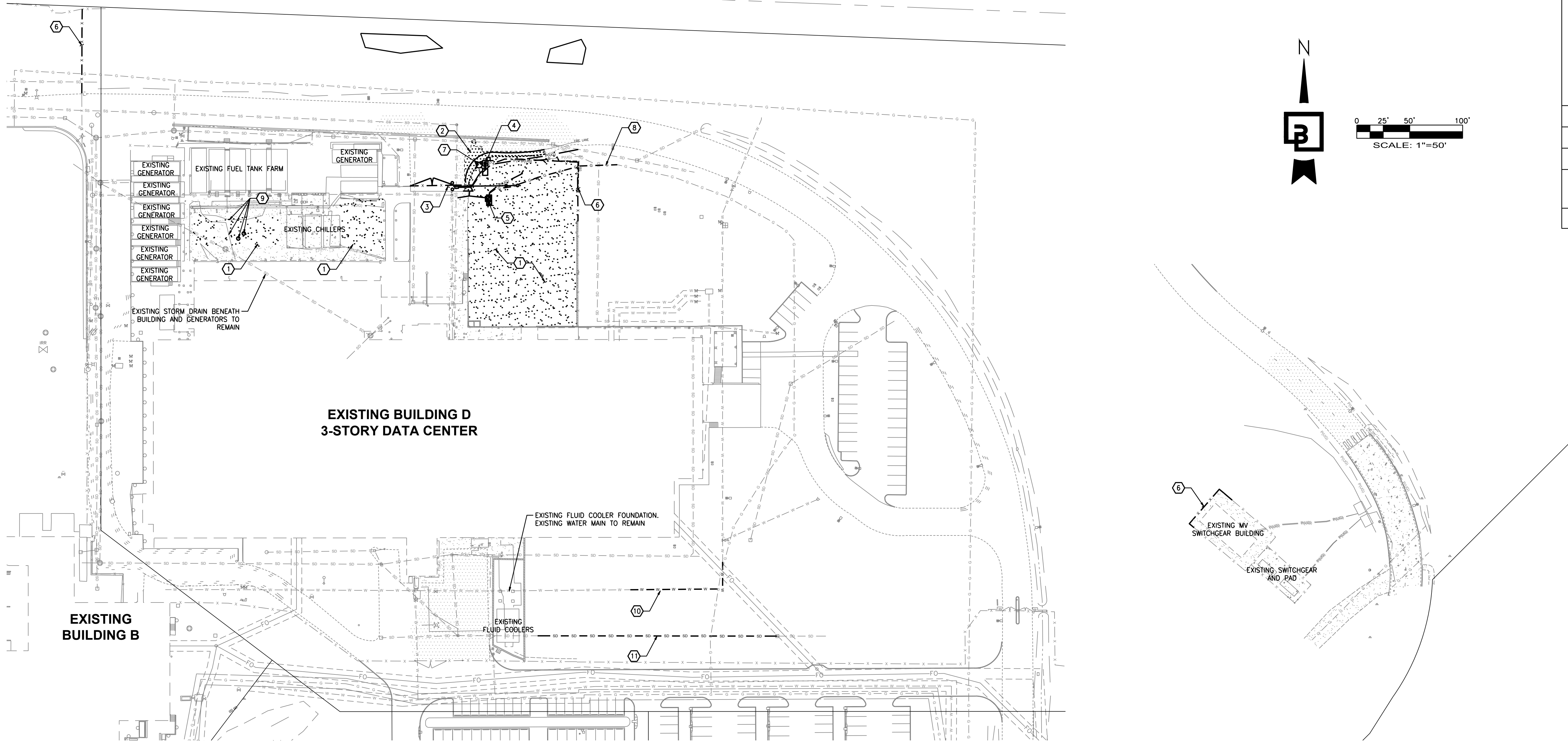
NOTE: THIS APPROVAL IS VOID AFTER 180 DAYS FROM APPROVAL DATE. THE CITY WILL NOT BE RESPONSIBLE FOR ERRORS AND/OR OMISSIONS ON THESE PLANS. FIELD CONDITIONS MAY DICTATE CHANGES TO THESE PLANS AS DETERMINED BY THE DEVELOPMENT ENGINEERING MANAGER.

DEMOLITION PLAN
FOR

CENTERIS VOLTAGE PARK

A PORTION OF THE NE 1/4, SE 1/4, NW 1/4 & SW 1/4, OF THE SE 1/4 OF SEC. 3, TWN. 19 N, RGE. 4 E, W.M. CITY OF PUYALLUP, PIERCE COUNTY, WASHINGTON

PRFO20240573



VOLTAGE PARK - BUILDING D DEMOLITION

SCALE: 1" = 50'

GENERAL DEMOLITION NOTES

- CONTRACTOR SHALL ASSURE THAT ALL NECESSARY PERMITS HAVE BEEN OBTAINED PRIOR TO COMMENCING WORK, INCLUDING DEMOLITION AND ANY SEWER CAPPING PERMITS. FIRE PROTECTION DEMOLITION PERMIT, IF REQUIRED, IS ISSUED BY FIRE DEPARTMENT. SEPARATE PERMITS ARE REQUIRED FOR EACH BUILDING AS WELL AS SEPARATE SEWER CAPPING PERMIT.
- ANY HAZARDOUS SUBSTANCES AND/OR MATERIALS ENCOUNTERED SHALL BE HANDLED AND DISPOSED OF BY QUALIFIED PERSONNEL ACCORDING TO COUNTY, STATE AND FEDERAL REGULATIONS.
- ANY ENCOUNTERED UNDERGROUND TANKS, VAULTS, ETC., SHALL BE REMOVED PER COUNTY/STATE REGULATIONS. CRAWL SPACES, TUNNELS, TANK HOLES, ETC., SHALL BE BACKFILLED AND COMPACTED PER GEOTECHNICAL ENGINEERS RECOMMENDATIONS.
- CONTRACTOR SHALL CONFIRM AND VERIFY WORK SCOPE ITEMS TO DEMOLISH WITH THE OWNERS AUTHORIZED REPRESENTATIVE.

DEMOLITION KEYNOTES

- EXISTING CURB GRAVEL PAD TO BE CLEARED WITHIN AREA OF CONSTRUCTION
- EXISTING ASPHALT SURFACING TO BE REMOVED WITHIN THE DEFINED LIMITS. CONTRACTOR TO PROVIDE NEAT SAWCUT.
- EXISTING SLIDING GATE, BOLLARD POSTS, AND MOTOR TO BE REMOVED. COORDINATE DISPOSAL WITH OWNER.
- EXISTING YARD LIGHT TO BE RELOCATED.
- EXISTING ELECTRICAL CONDUIT AND PULL BOXES TO BE RELOCATED. COORDINATE WITH ELECTRICAL.
- EXISTING FENCING TO BE REMOVED WITHIN THE DEFINED LIMITS. REFER TO ARCHITECTURAL PLANS FOR REPLACEMENT
- EXISTING HYDRANT AND BOLLARDS TO BE RELOCATED.
- EXISTING GAS SERVICE TO BE RELOCATED. COORDINATE WITH UTILITY PURVEYOR ON RELOCATION.
- EXISTING MISC. UTILITIES AND CONDUIT. VERIFY SERVICE AND RELOCATE AS NECESSARY.
- EXISTING FIRE LINE TO BE RELOCATED. COORDINATE ALL SHUT DOWNS WITH UTILITY AND FIRE MARSHAL.
- EXISTING STORM DRAIN LINE TO BE RELOCATED.

VOLTAGE PARK - SUB-STATION DEMOLITION

SCALE: 1" = 50'

| City of Puyallup Development & Permitting Services ISSUED PERMIT | |
|--|--------------|
| Building | Planning |
| Engineering | Public Works |
| Fire | Traffic |

UTILITY CONFLICT NOTE:

THE CONTRACTOR SHALL BE RESPONSIBLE FOR VERIFYING THE LOCATION, DIMENSION, AND DEPTH OF ALL EXISTING UTILITIES WHETHER SHOWN ON THESE PLANS OR NOT BY POT-HOLING THE UTILITIES AND SURVEYING THE HORIZONTAL AND VERTICAL LOCATION PRIOR TO CONSTRUCTION. THIS SHALL INCLUDE CALLING UTILITY LOCATE @ 1-800-424-5555 AND THEN POT-HOLING ALL OF THE EXISTING UTILITIES AT LOCATIONS OF NEW UTILITY CROSSINGS TO PHYSICALLY VERIFY WHETHER OR NOT CONFLICTS EXIST. LOCATIONS OF SAID UTILITIES AS SHOWN ON THESE PLANS ARE BASED UPON THE UNVERIFIED PUBLIC INFORMATION AND ARE SUBJECT TO VARIATION. IF CONFLICTS SHOULD OCCUR, THE CONTRACTOR SHALL CONSULT BARGHAUSEN CONSULTING ENGINEERS, INC. TO RESOLVE ALL PROBLEMS PRIOR TO PROCEEDING WITH CONSTRUCTION.

**CALL BEFORE YOU DIG:
1-800-424-5555 OR "811"**

APPROVED
BY: CITY OF PUYALLUP
DEVELOPMENT ENGINEERING
DATE: _____

NOTE: THIS APPROVAL IS VOID AFTER 180 DAYS FROM APPROVAL DATE.
THE CITY WILL NOT BE RESPONSIBLE FOR ERRORS AND/OR OMISSIONS ON THESE PLANS.
FIELD CONDITIONS MAY DICTATE CHANGES TO THESE PLANS AS DETERMINED BY THE DEVELOPMENT ENGINEERING MANAGER.

| Revision | Appr. | Ckd. | By | Date | No. |
|----------|-------|------|----|------|-----|
| | | | | | |

DEMOLITION PLAN
**CENTERIS
VOLTAGE PARK**

For: **BENAROYA CAPITAL, LLC**
CENTERIS DATA CENTERS
9675 SE 36TH ST, SUITE 115
MERCER ISLAND, WA 98040

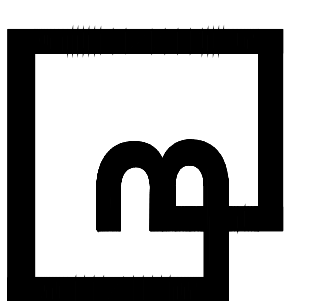


4/5/24

Scale: Horizontal 1" = 50' Vertical N/A

| Designed | KDM | Drawn | KDM | Checked | CMV | Approved | DKB | Date |
|----------|-----|-------|-----|---------|-----|----------|-----|--------|
| | | | | | | | | 4/5/24 |

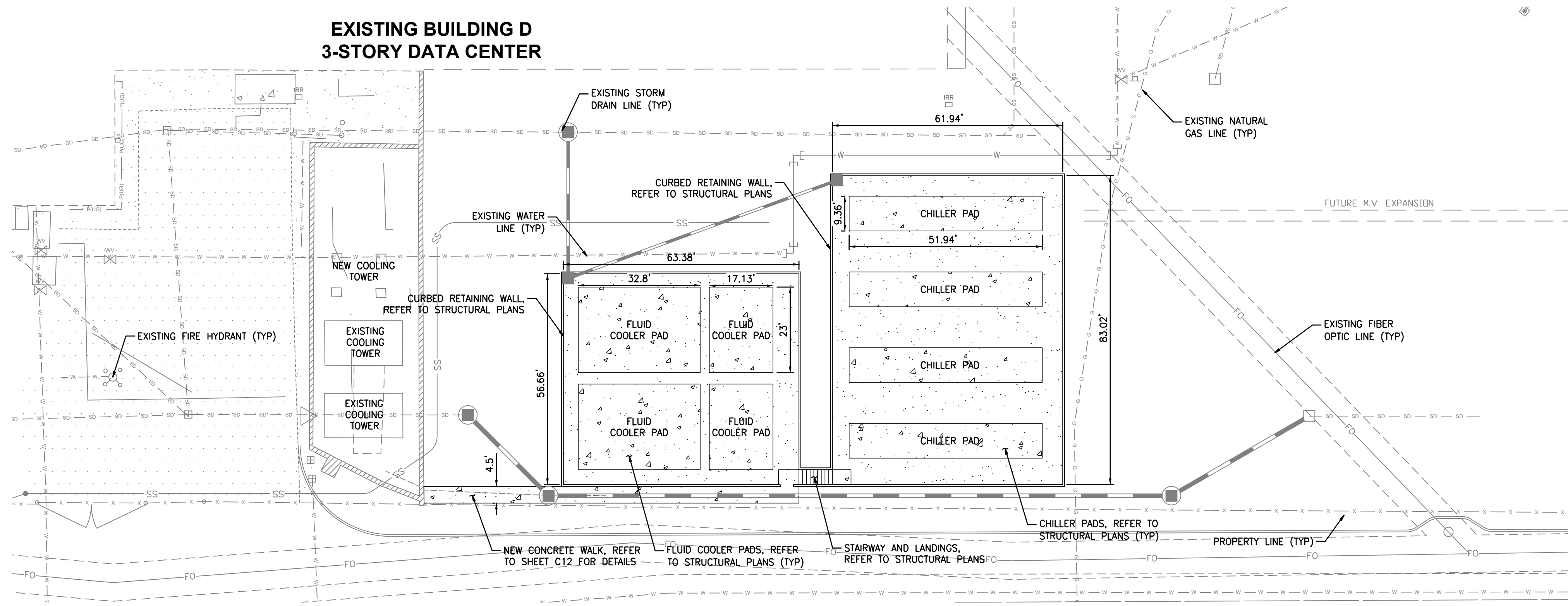
Barghausen Consulting Engineers, Inc.
18215 72nd Avenue South
Kent, WA 98032
425.251.6222 barghausen.com



Job Number: 18111
Sheet: C9 of 20

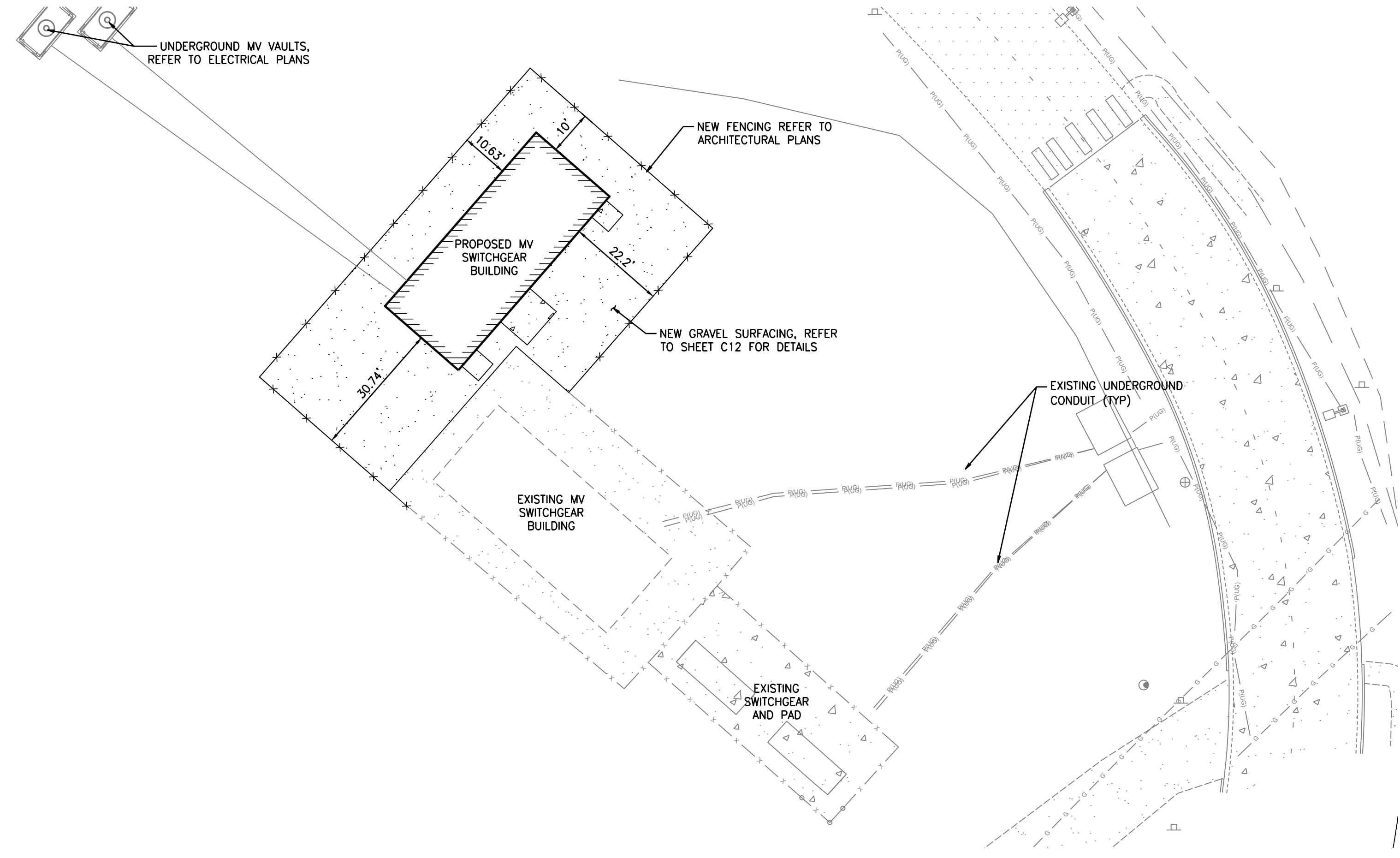
SOUTH SITE PLAN FOR CENTERIS VOLTAGE PARK

A PORTION OF THE NE 1/4, SE 1/4, NW 1/4 & SW 1/4, OF THE SE 1/4 OF SEC. 3, TWN. 19 N, RGE. 4 E, W.M. CITY OF PUYALLUP, PIERCE COUNTY, WASHINGTON



VOLTAGE PARK - SOUTH UTILITY YARD *STRUCTURAL DRAWINGS FOR PADS UNDER SEPARATE PERMIT

SCALE: 1" = 20'



VOLTAGE PARK - SUB-STATION

SCALE: 1" = 20'

| City of Puyallup Development & Permitting Services ISSUED PERMIT | |
|--|--------------|
| Building | Planning |
| Engineering | Public Works |
| Fire | Traffic |

UTILITY CONFLICT NOTE:

THE CONTRACTOR SHALL BE RESPONSIBLE FOR VERIFYING THE LOCATION, DIMENSION, AND DEPTH OF ALL EXISTING UTILITIES WHETHER SHOWN ON THESE PLANS OR NOT BY POT-HOLING THE UTILITIES AND SURVEYING THE HORIZONTAL AND VERTICAL LOCATION PRIOR TO CONSTRUCTION. THIS SHALL INCLUDE CALLING UTILITY LOCATE @ 1-800-424-5555 AND THEN POT-HOLING ALL OF THE EXISTING UTILITIES AT LOCATIONS OF NEW UTILITY CROSSINGS TO PHYSICALLY VERIFY WHETHER OR NOT CONFLICTS EXIST. LOCATIONS OF SAID UTILITIES AS SHOWN ON THESE PLANS ARE BASED UPON THE UNVERIFIED PUBLIC INFORMATION AND ARE SUBJECT TO VARIATION. IF CONFLICTS SHOULD OCCUR, THE CONTRACTOR SHALL CONSULT BARGHAUSEN CONSULTING ENGINEERS, INC. TO RESOLVE ALL PROBLEMS PRIOR TO PROCEEDING WITH CONSTRUCTION.

**CALL BEFORE YOU DIG:
1-800-424-5555 OR "811"**

APPROVED
BY: _____
CITY OF PUYALLUP
DEVELOPMENT ENGINEERING
DATE: _____

NOTE: THIS APPROVAL IS VOID AFTER 180 DAYS FROM APPROVAL DATE.
THE CITY WILL NOT BE RESPONSIBLE FOR ERRORS AND/OR OMISSIONS ON THESE PLANS.
FIELD CONDITIONS MAY DICTATE CHANGES TO THESE PLANS AS DETERMINED BY THE DEVELOPMENT ENGINEERING MANAGER.

| Revision | |
|----------|-------|
| No. | Date |
| By | Appr. |
| Ckd. | |

Title: SOUTH SITE PLAN
CENTERIS VOLTAGE PARK

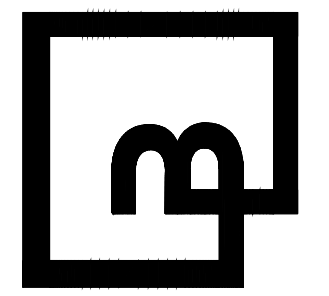
For: **BENAROYA CAPITAL, LLC**
CENTERIS DATA CENTERS
9675 SE 36TH ST, SUITE 115
MERCER ISLAND, WA 98040



4/5/24
Scale: Horizontal 1" = 20', Vertical N/A

| | |
|----------|--------|
| Designed | KDM |
| Drawn | KDM |
| Checked | CMV |
| Approved | DKB |
| Date | 4/5/24 |

Barghausen Consulting Engineers, Inc.
18215 72nd Avenue South
Kent, WA 98032
425.251.6222 barghausen.com



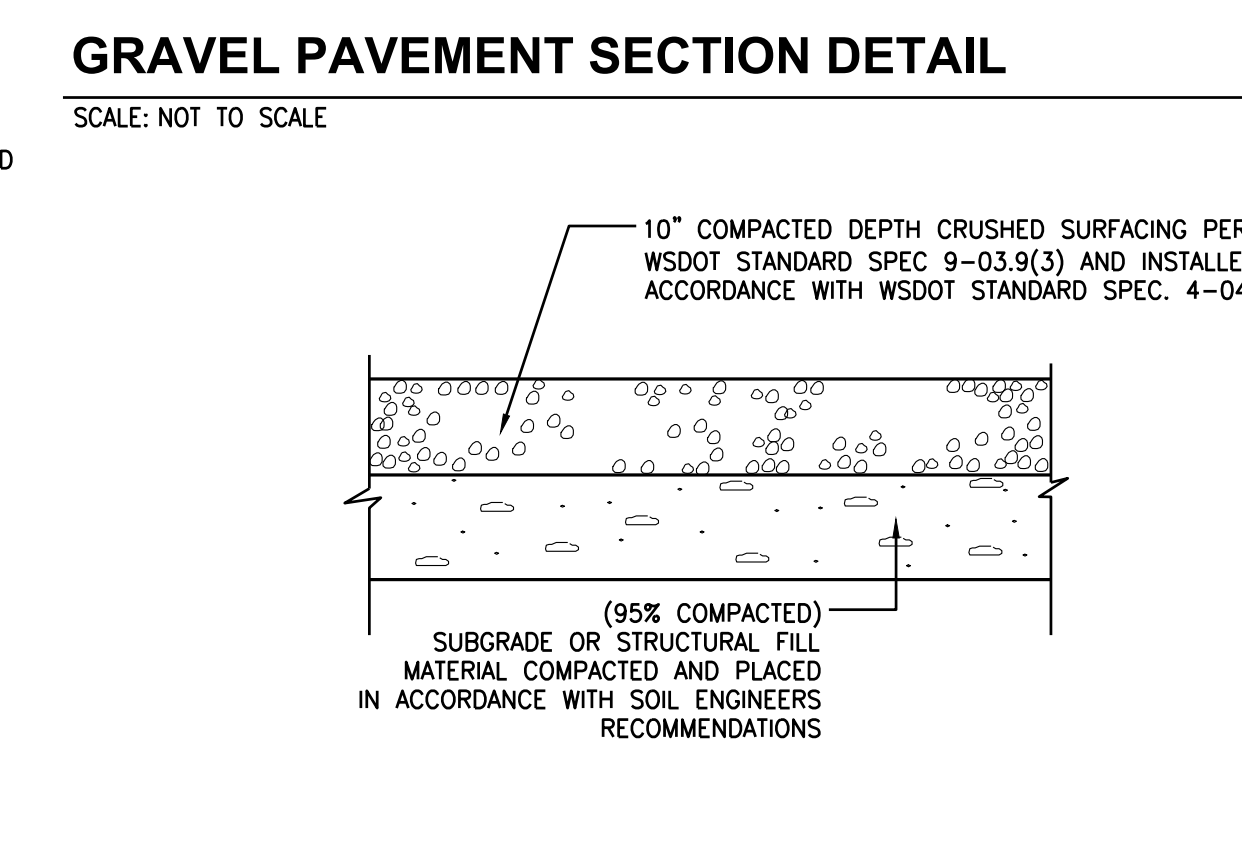
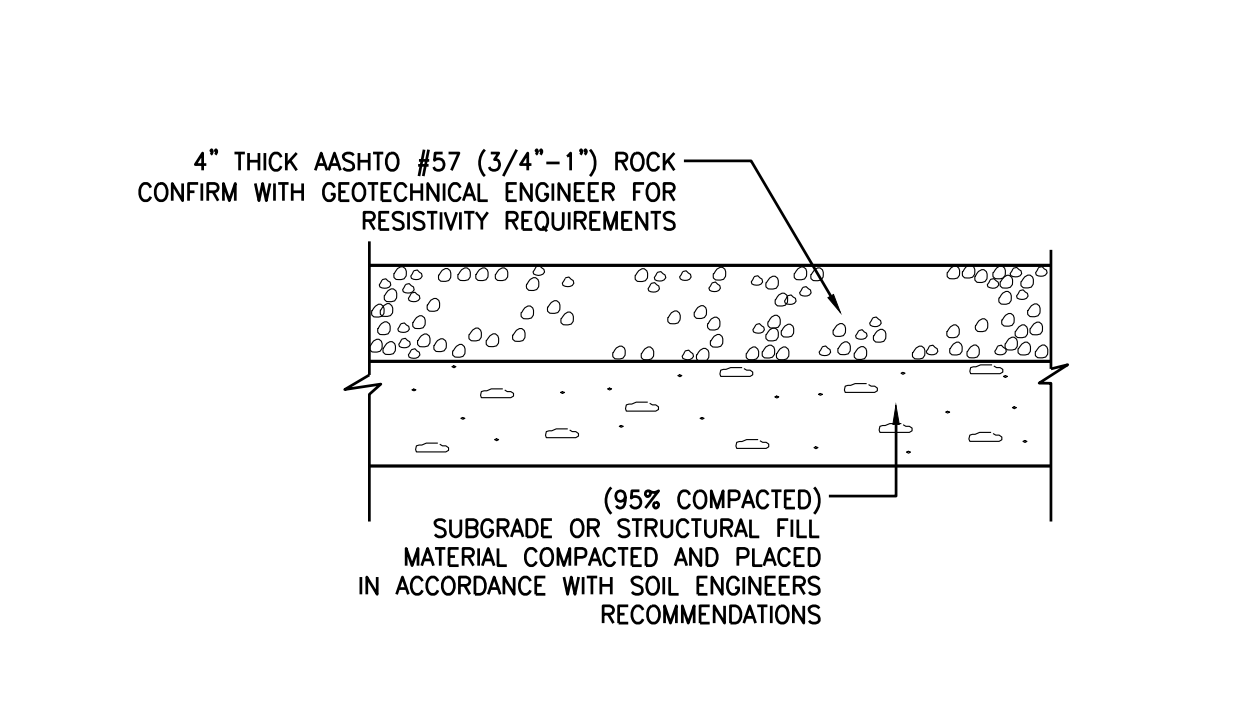
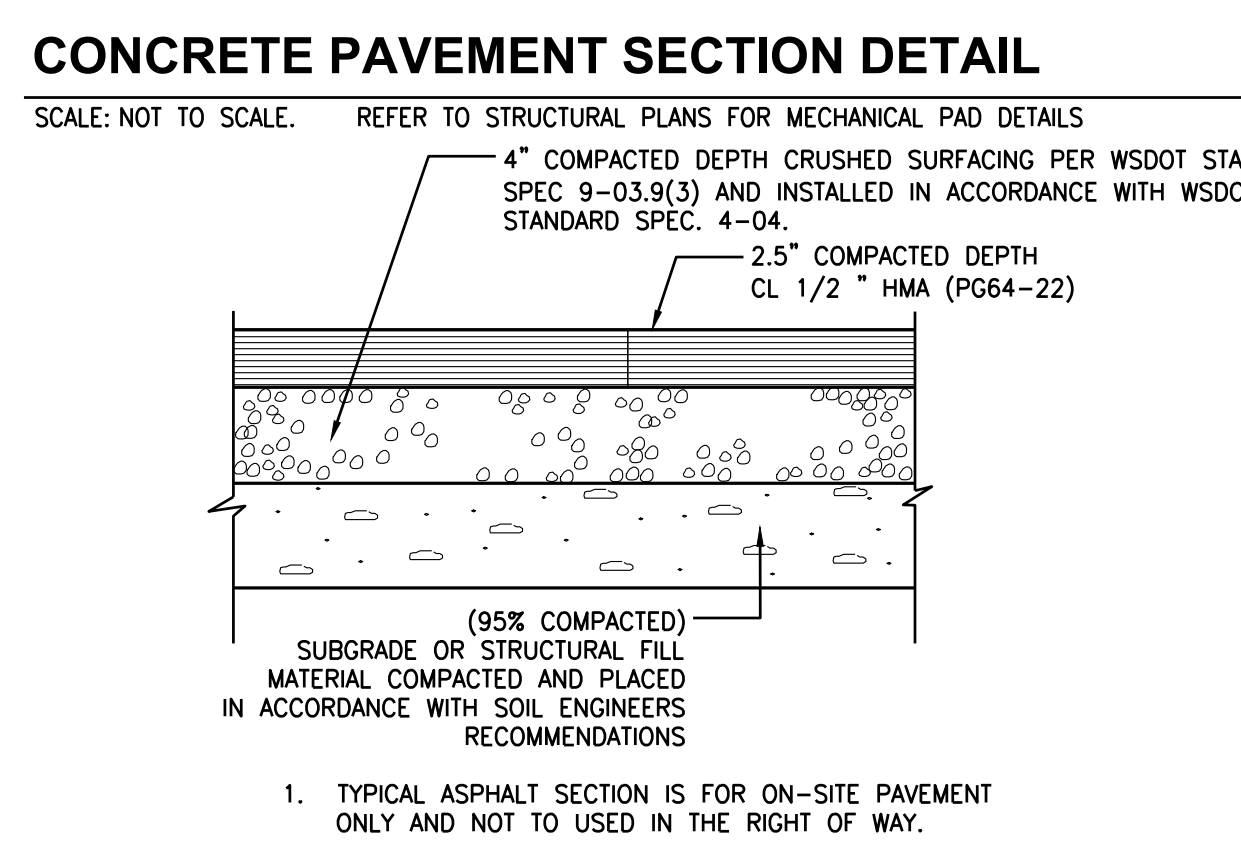
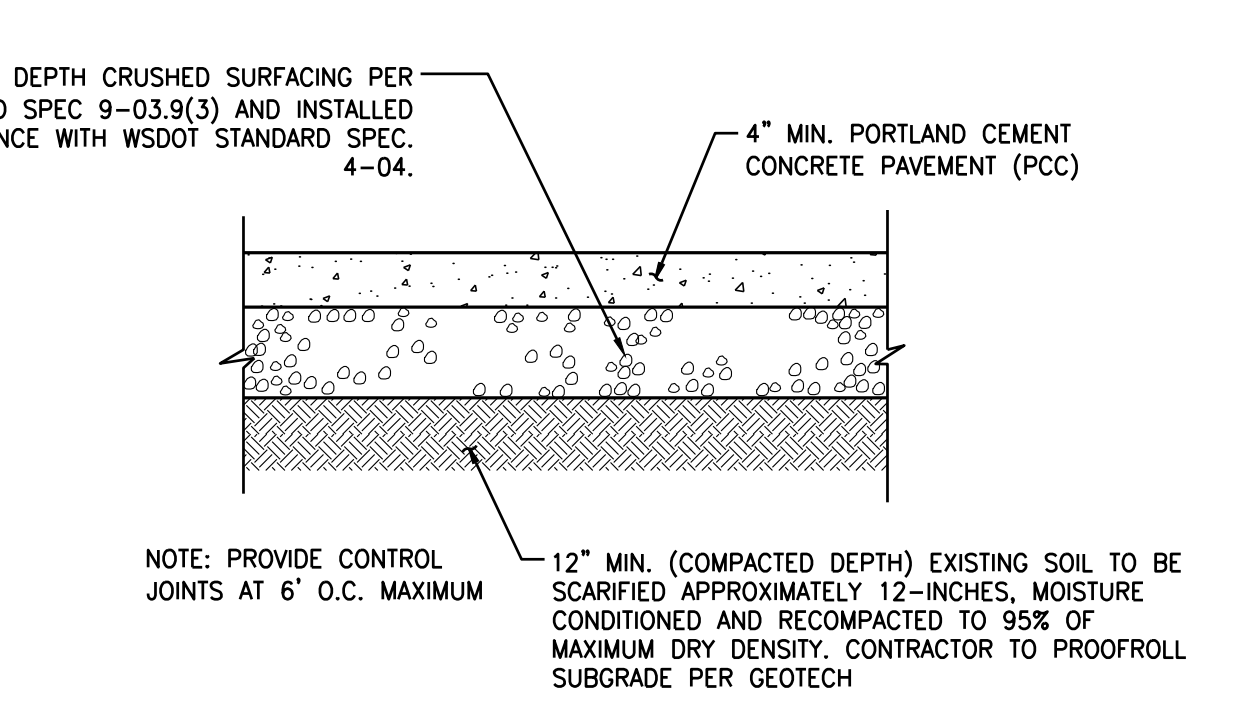
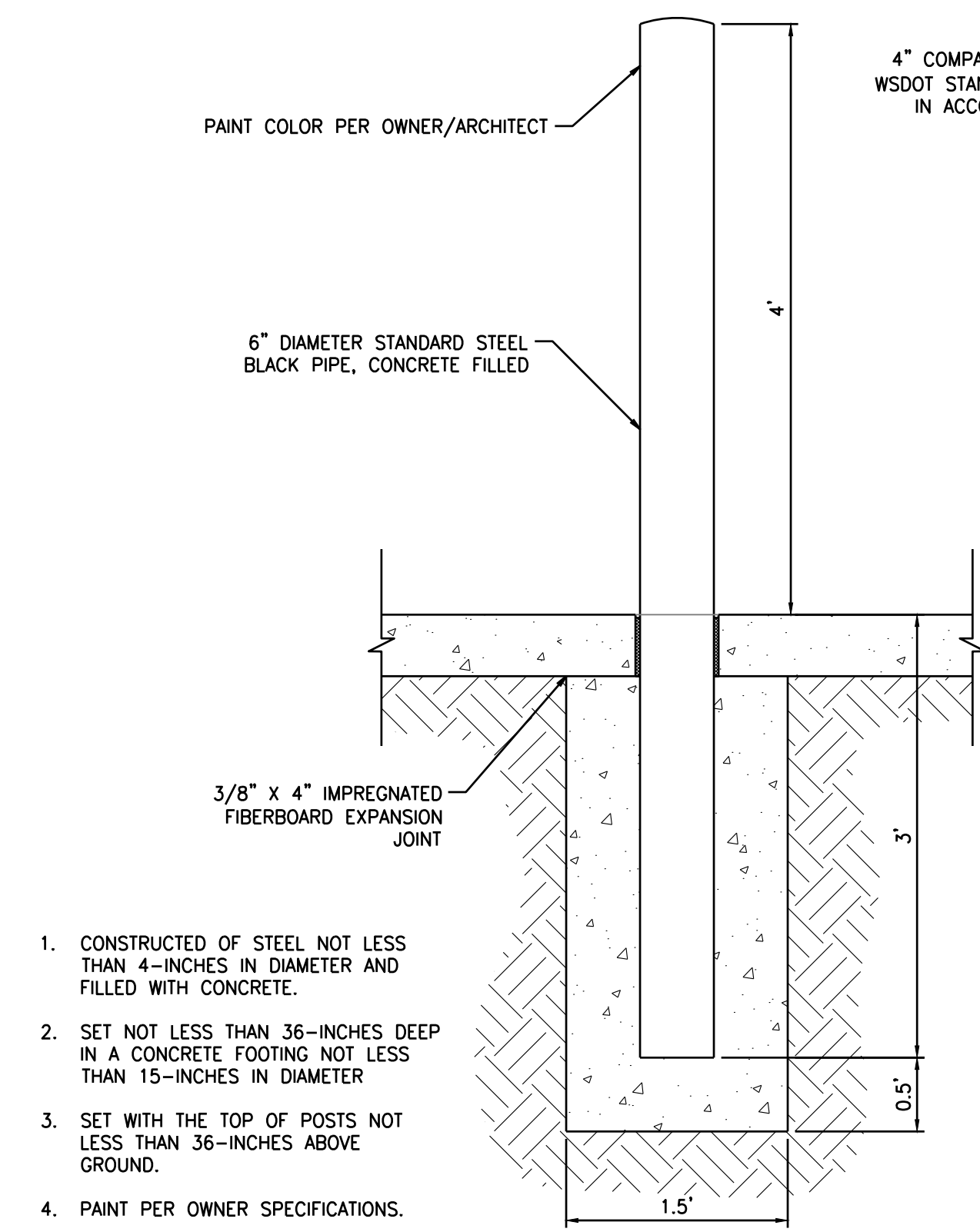
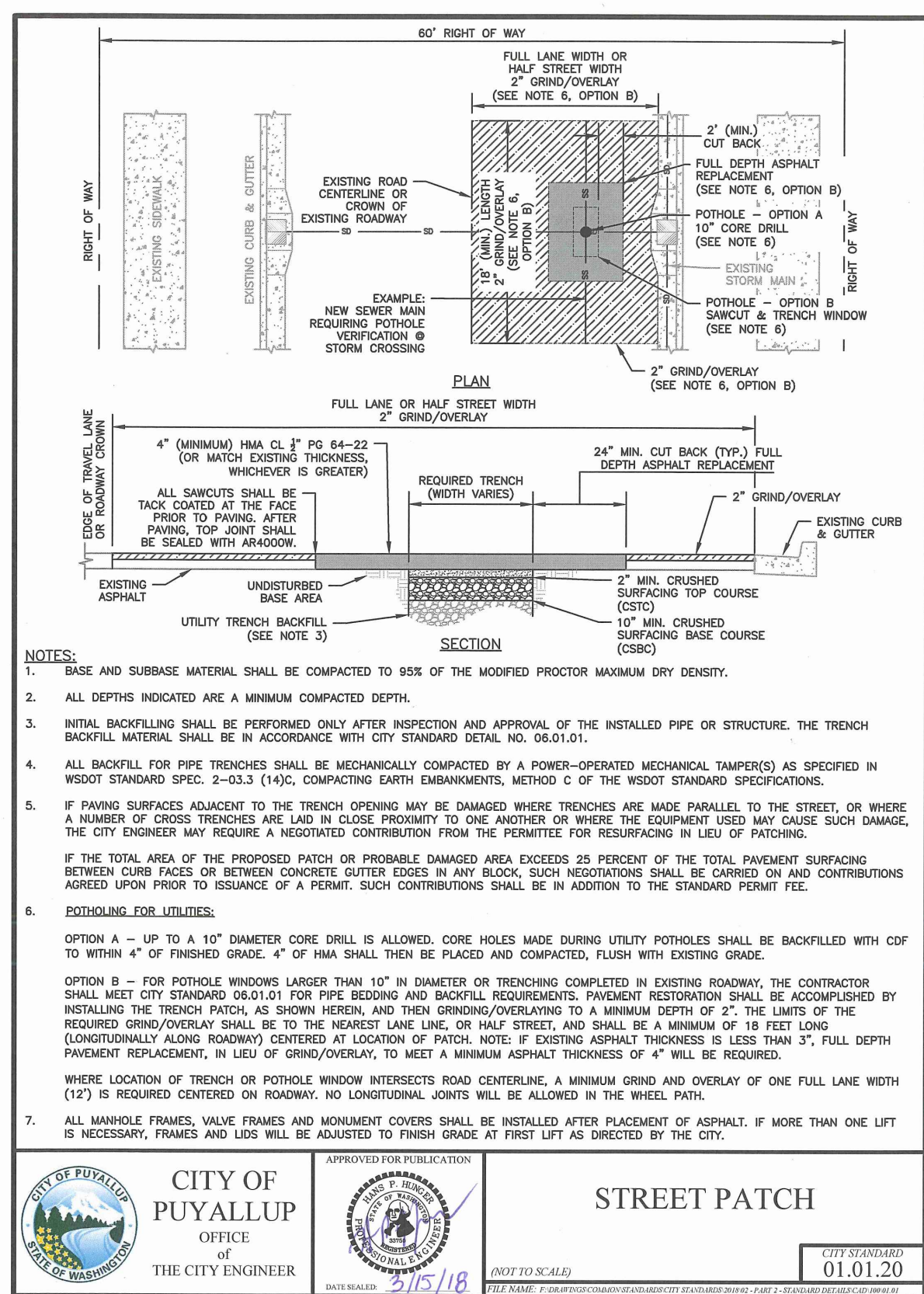
Job Number: 18111
Sheet: C11 of 20

**SITE DETAILS
FOR**

CENTERIS VOLTAGE PARK

A PORTION OF THE NE 1/4, SE 1/4, NW 1/4 & SW 1/4, OF THE SE 1/4 OF SEC. 3, TWN. 19 N, RGE. 4 E, W.M. CITY OF PUYALLUP, PIERCE COUNTY, WASHINGTON

PRFO20240573



| | |
|--|--------------|
| City of Puyallup Development & Permitting Services ISSUED PERMIT | |
| Building | Planning |
| Engineering | Public Works |
| Fire | Traffic |

UTILITY CONFLICT NOTE:

THE CONTRACTOR SHALL BE RESPONSIBLE FOR VERIFYING THE LOCATION, DIMENSION, AND DEPTH OF ALL EXISTING UTILITIES WHETHER SHOWN ON THESE PLANS OR NOT BY POTHOLES THE UTILITIES AND SURVEYING THE HORIZONTAL AND VERTICAL LOCATION PRIOR TO CONSTRUCTION. THIS SHALL INCLUDE CALLING UTILITY LOCATE @ 1-800-424-5555 AND THEN POTHOLES ALL OF THE EXISTING UTILITIES AT LOCATIONS OF NEW UTILITY CROSSINGS TO PHYSICALLY VERIFY WHETHER OR NOT CONFLICTS EXIST. LOCATIONS OF SAID UTILITIES AS SHOWN ON THESE PLANS ARE BASED UPON THE UNVERIFIED PUBLIC INFORMATION AND ARE SUBJECT TO VARIATION. IF CONFLICTS SHOULD OCCUR, THE CONTRACTOR SHALL CONSULT BARGHAUSEN CONSULTING ENGINEERS, INC. TO RESOLVE ALL PROBLEMS PRIOR TO PROCEEDING WITH CONSTRUCTION.

**CALL BEFORE YOU DIG:
1-800-424-5555 OR "811"**

APPROVED

BY: _____
CITY OF PUYALLUP
DEVELOPMENT ENGINEERING

DATE: _____

| No. | Date | By | Appr. | Revision |
|-----|------|----|-------|----------|
| | | | | |

**SITE DETAILS
CENTERIS
VOLTAGE PARK**

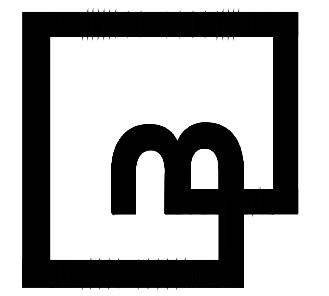
For: **BENAROYA CAPITAL, LLC
CENTERIS DATA CENTERS
9675 SE 36TH ST, SUITE 115
MERCER ISLAND, WA 98040**



Scale: Horizontal N/A, Vertical N/A

Designed: KDM, Drawn: KDM, Checked: CMV, Approved: DKB, Date: 4/5/24

Barghausen Consulting Engineers, Inc.
18215 72nd Avenue South
Kent, WA 98032
425.251.6222 **barghausen.com**



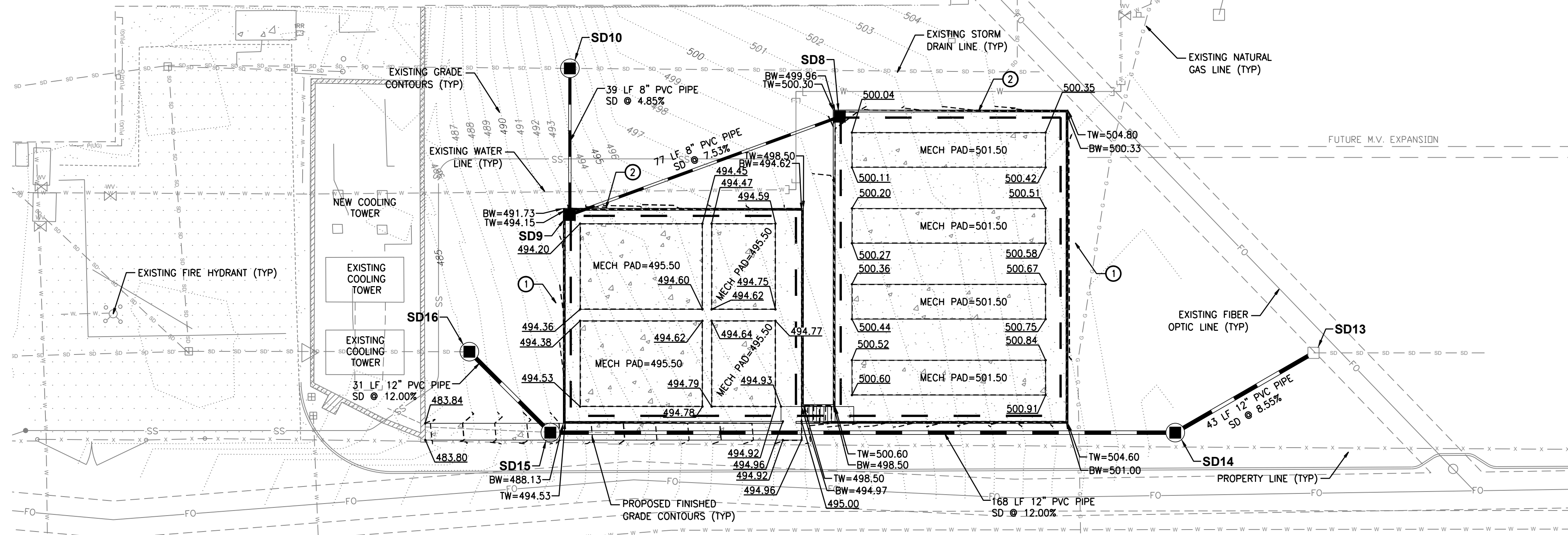
Job Number: 18111
Sheet: C12 of 20

SOUTH GRADING & DRAINAGE PLAN FOR CENTERIS VOLTAGE PARK

A PORTION OF THE NE 1/4, SE 1/4, NW 1/4 & SW 1/4, OF THE SE 1/4 OF SEC. 3, TWN. 19 N, RGE. 4 E, W.M. CITY OF PUYALLUP, PIERCE COUNTY, WASHINGTON

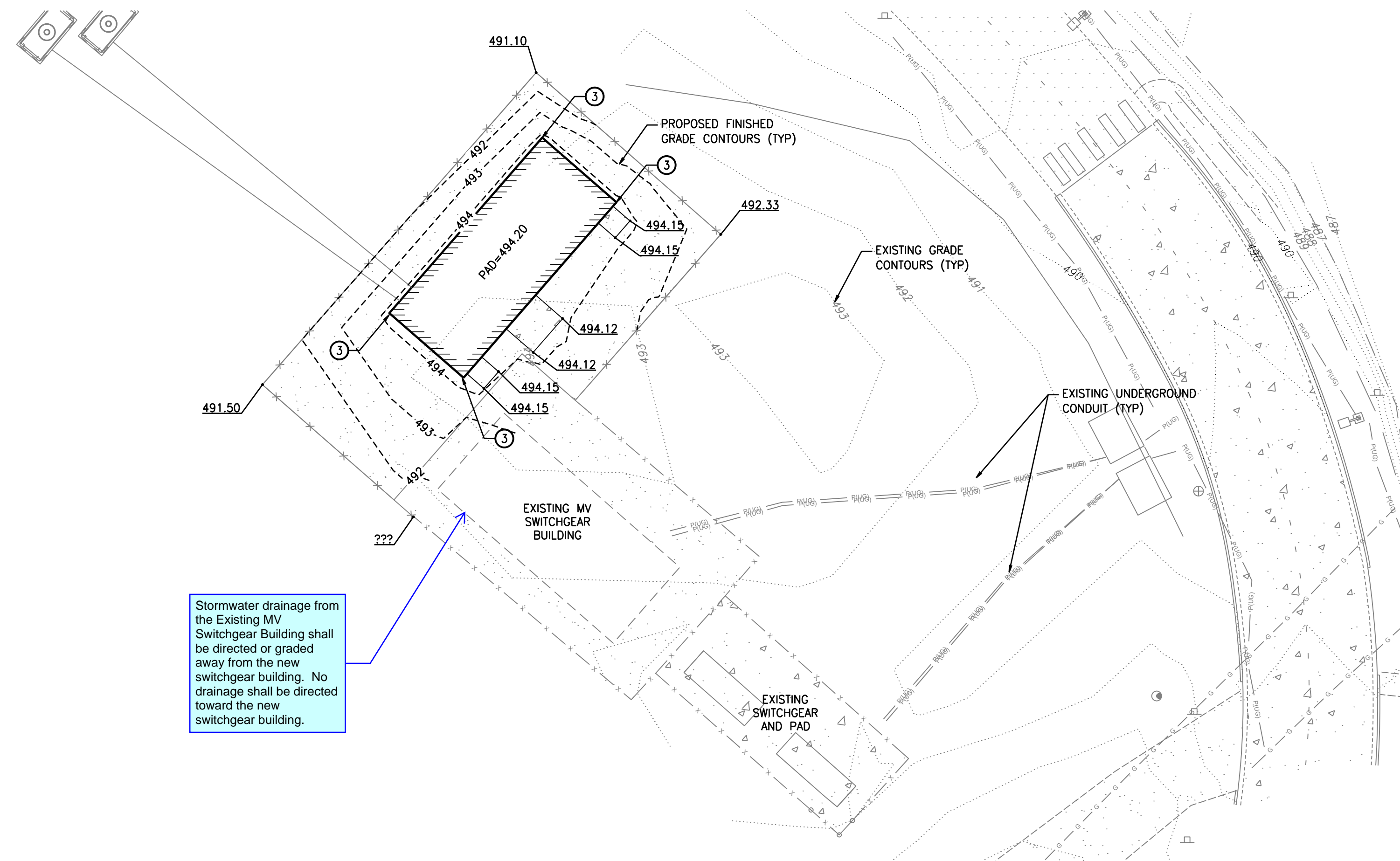
PRFO20240573

EXISTING BUILDING D 3-STORY DATA CENTER



VOLTAGE PARK - SOUTH UTILITY YARD *STRUCTURAL DRAWINGS FOR PADS UNDER SEPARATE PERMIT

SCALE: 1" = 20'



Stormwater drainage from the Existing MV Switchgear Building shall be directed or graded away from the new switchgear building. No drainage shall be directed toward the new switchgear building.

VOLTAGE PARK - SUB-STATION

SCALE: 1" = 20'

GRADING GENERAL NOTES

- ALL GRADING AND PUBLIC IMPROVEMENTS SHALL BE CONSTRUCTED IN ACCORDANCE WITH THE PROVISIONS OF THE CURRENT CITY ORDINANCE AND STANDARD PLANS. THE GRADING AND IMPROVEMENTS ARE SUBJECT TO THE OBSERVATION OF THE PUBLIC WORKS DEPARTMENT.
- ALL EXISTING UTILITY STRUCTURE LIDS THAT FALL WITHIN THE AREA OF WORK SHALL BE ADJUSTED TO FINISHED GRADE ELEVATIONS. THE CONTRACTOR SHALL CONFIRM THE FEASIBILITY OF ADJUSTING EXISTING UTILITY STRUCTURE LIDS TO FINISHED GRADE PRIOR TO CONSTRUCTION AND NOTIFY THE ENGINEER OF ANY DISCREPANCIES.
- ALL SPOT ELEVATIONS SHOWN ARE TO FINISHED SURFACE (TOP OF ASPHALT OR TOP OF CONCRETE PAVEMENT) UNLESS OTHERWISE NOTED.

TW - TOP OF WALL
BW - BOTTOM OF WALL

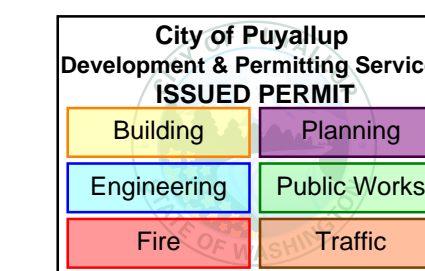
STORM DRAIN GENERAL NOTES

- ALL STORM DRAIN (SD) LINES SHALL BE SDR-35 PVC UNLESS OTHERWISE NOTED. ALL STORM DRAIN PIPES AND STRUCTURES SHALL BE INSTALLED PER MANUFACTURER'S SPECIFICATIONS AND CITY OF PUYALLUP STANDARDS.

STORM KEYNOTES

- RETAINING WALL FOOTING DRAIN, REFER TO STRUCTURAL PLANS
- RETAINING WALL, REFER TO STRUCTURAL PLANS
- ROOF DRAIN SPLASH BLOCK PER CITY OF PUYALLUP STANDARD PLAN 02.05.05

| STORM STRUCTURES | |
|------------------|--|
| SD8 | CB TYPE 1 - 24" N: 671300.16 E: 1198040.79 RIM=499.98 IE=497.40 (8" W) |
| SD9 | CB TYPE 1 - 24" N: 671273.80 E: 1197968.42 RIM=494.17 IE=491.60 (8" E) IE=491.60 (8" N) |
| SD10 | CB TYPE 2 - 48" SOLID COVER N: 671313.11 E: 1197968.42 RIM=494.82 IE=489.69 (8" S) |
| SD13 | EXISTING CATCH BASIN N: 671236.79 E: 1198167.80 RIM=507.62 IE=502.42 (12" SW) |
| SD14 | CB TYPE 2 - 48" SOLID COVER N: 671215.39 E: 1198130.74 RIM=507.30 IE=498.76 (12" NE) IE=498.76 (12" W) |
| SD15 | CB TYPE 2 - 48" SOLID COVER N: 671237.10 E: 1197941.48 RIM=485.33 IE=478.65 (12" E) IE=478.65 (12" NW) |
| SD16 | CB TYPE 2 - 48" SOLID COVER N: 671237.10 E: 1197941.48 RIM=485.33 IE=474.97 (12" SE) |



CALL BEFORE YOU DIG:
1-800-424-5555 OR "811"

UTILITY CONFLICT NOTE:

THE CONTRACTOR SHALL BE RESPONSIBLE FOR VERIFYING THE LOCATION, DIMENSION, AND DEPTH OF ALL EXISTING UTILITIES WHETHER SHOWN ON THESE PLANS OR NOT BY POT-HOLING THE UTILITIES AND SURVEYING THE HORIZONTAL AND VERTICAL LOCATION PRIOR TO CONSTRUCTION. THIS SHALL INCLUDE CALLING UTILITY LOCATE @ 1-800-424-5555 AND THEN POT-HOLING ALL OF THE EXISTING UTILITIES AT LOCATIONS OF NEW UTILITY CROSSINGS TO PHYSICALLY VERIFY WHETHER OR NOT CONFLICTS EXIST. LOCATIONS OF SAID UTILITIES AS SHOWN ON THESE PLANS ARE BASED UPON THE UNVERIFIED PUBLIC INFORMATION AND ARE SUBJECT TO VARIATION. IF CONFLICTS SHOULD OCCUR, THE CONTRACTOR SHALL CONSULT BARGHAUSEN CONSULTING ENGINEERS, INC. TO RESOLVE ALL PROBLEMS PRIOR TO PROCEEDING WITH CONSTRUCTION.

APPROVED
BY: CITY OF PUYALLUP
DEVELOPMENT ENGINEERING
DATE:

NOTE: THIS APPROVAL IS VOID AFTER 180 DAYS FROM APPROVAL DATE. THE CITY WILL NOT BE RESPONSIBLE FOR ERRORS AND/OR OMISSIONS ON THESE PLANS. FIELD CONDITIONS MAY DICTATE CHANGES TO THESE PLANS AS DETERMINED BY THE DEVELOPMENT ENGINEERING MANAGER.

For: BENAROYA CAPITAL, LLC
CENTERIS DATA CENTERS
9675 SE 36TH ST, SUITE 115
MERCER ISLAND, WA 98040

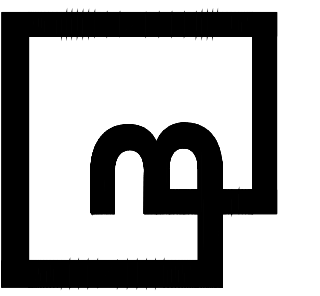


4/5/24

Scale: Horizontal 1" = 20' Vertical N/A

Designed: KDM
Drawn: KDM
Checked: CMV
Approved: DKB
Date: 4/5/24

Barghausen Consulting Engineers, Inc.
18215 72nd Avenue South
Kent, WA 98032
425.251.6222
barghausen.com



Job Number: 18111
Sheet: C14 of 20

Title: SOUTH GRADING & DRAINAGE PLAN
CENTERIS VOLTAGE PARK

| No. | Date | By | Ckd. | Appr. | Revision |
|-----|------|----|------|-------|----------|
| | | | | | |