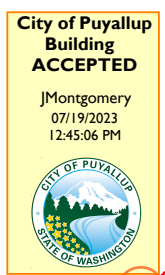


WITH THE FLUSH BEAMS AND DROPPED BEAM AND LOCATION OF FAU CLOSET I CANNOT PUT THE CHASE IN THE CENTER OF THE CLOSET



PRRNSF20230919

REPORT REQUIRED TO BE PROVIDED BY THE PERMITTEE ON

SITE FOR ALL INSPECTIONS

PLEASE VERIFY THE FOLLOWING

1. DIMENSIONS
2. FLUSH/DROPPED BEAMS
3. BRG WALLS
4. SEE CLOUDED NOTE

18" FLOOR TRUSSES
24" O.C.
40-10-10 LOADING
2015 CODE

HANGERS
JUS46 36

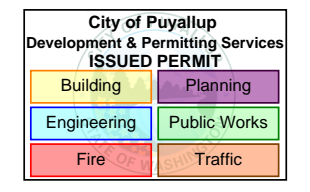
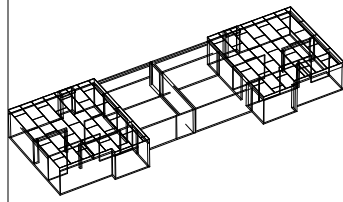
TRUSSES ARE SPACED TO MISS THE DRAINS
IT IS STILL THE RESPONSIBILITY OF THE FRAMERS TO VERIFY THAT THE TRUSSES DO MISS THE DRAINS

**** IMPORTANT ****

◀ = INDICATES LEFT END



Sales Rep: Chad Sienkiewicz
Estimate By:
Finalized By:
Date: 4/14/2023



Customer: HC Homes Inc
Job Name: HC Homes Duplex
Job Number: J1139138F
Plan: 1864 DUPLEX

Drawing Type: Floor Trusses
Loading
TC/LL = 40.0 lb
TC/DL = 10.0 lb
BC/DL = 10.0 lb
WIND = 110 mph 'B'

Sheet Number: