

**NOTE**  
MOVING WORK ZONE. NOT ALL AREAS ARE TO BE IMPACTED AT THE SAME TIME

PRFUP20240862

Closure Allowed  
Monday - Thursday  
10 AM - 2 PM  
Call Communications Center  
At (253) 287-4456  
On Day Of Closure

City of Puyallup  
Development & Permitting Services  
**ISSUED PERMIT**

Building	Planning
Engineering	Public Works
Fire	Traffic

A minimum width of 11' travel lanes must be maintained in both directions at all times. Otherwise a new TCP must be submitted for review by the city

The applicant shall notify property owner(s) of blocked driveway(s) at least 24 hours in advance.

Work shall immediately cease in the work zone for a pedestrian spotter, available at all times, to escort pedestrians around the work area

**A UNIFORMED POLICE OFFICER IS REQUIRED AT THIS LOCATION**  
For approved Traffic Control Plans that necessitate the use of police officer assistance, Puyallup Police officers will be utilized. Contact Meghan Genge at 253-841-5436 or email at: mgenge@ci.puyallup.wa.us

# TRAFFIC CONTROL PLAN

THE DESIGNED TRAFFIC CONTROLS CONTAINED WITHIN THIS TCP WILL NOT BE IMPLEMENTED UNTIL APPROVED BY THE PUBLIC AUTHORITY HAVING JURISDICTION

**DISCLAIMER**  
All traffic control setups, sign spacing, and procedures will conform to the specifications stated in the federal Manual on Uniform Traffic Control Devices (M.U.T.C.D.)  
Cities and various municipalities may have also adopted specialized guidelines for traffic control within their jurisdiction. It is the responsibility of the on-site traffic control personnel to verify if any special conditions exist.

- TRAFFIC CONTROL ADDITIONAL NOTES**
- Will coordinate with any businesses that will be affected by construction
  - Temporary "NO PARKING" signs to be placed at least 72 hours prior to work
  - Driveway access will be maintained unless otherwise noted
  - Sidewalk of 4' width will be maintained for pedestrian access unless otherwise noted, spotter on site to escort pedestrians through work zone
  - All work will stop while pedestrians are escorted through work zones
  - Signs within roadway will be protected by channelization devices
  - All traffic control devices used for night work must be retroreflective

**LEGEND**

Work Vehicle	Truck Mounted Attenuator	Work Area
Flagger	Spotter	Traffic Safety Cone/Drum

WORK TYPE: **AERIAL WORK**

**LONGITUDINAL BUFFER SPACE = B**

SPEED	25	30	35	40	45	50	55	60	65	70
LENGTH	155	200	250	305	360	425	495	570	780	840

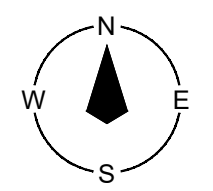
**MINIMUM TAPER LENGTH IN FEET = L**

LANE WIDTH	POSTED SPEED LIMIT (MPH)									
	25	30	35	40	45	50	55	60	65	70
10	105	150	205	270	450	500	550	-	-	-
11	115	160	225	295	495	550	605	660	-	-
12	125	180	245	320	540	600	660	720	780	840

**SIGN SPACING = X (FEET)**

FREEWAYS & EXPRESSWAYS	50/70 MPH	1500' +/- (OR AS PER MUTCD)
RURAL HIGHWAYS	60/65 MPH	800' +/-
RURAL ROADS	45/55 MPH	500' +/-
RURAL ROADS & URBAN ARTERIALS	35/40 MPH	350' +/-
RURAL ROADS & URBAN ARTERIALS RESIDENTIAL & BUSINESS DISTRICTS	25/30 MPH	200' +/-
URBAN STREETS	25 MPH OR LESS	100' +/-

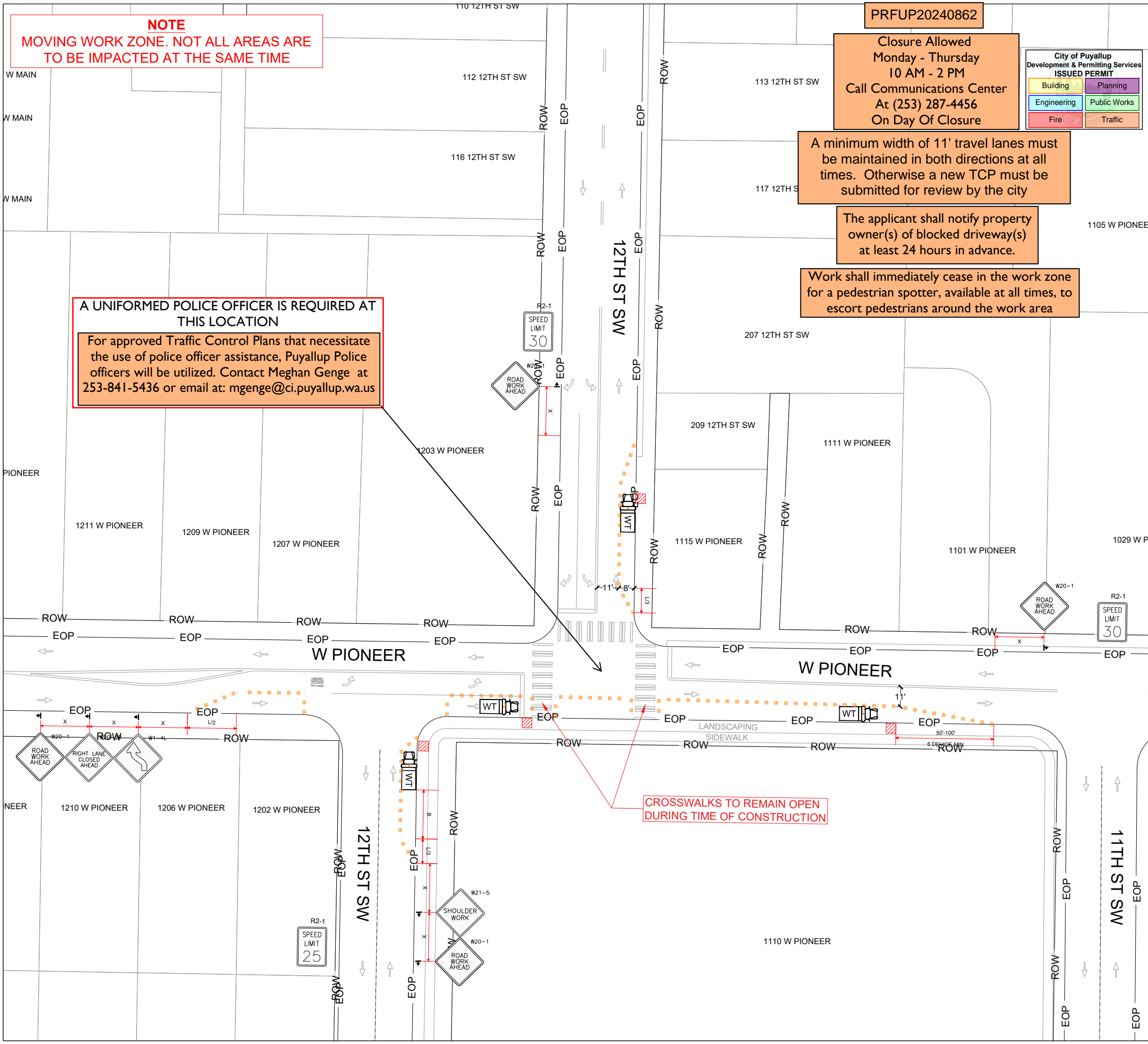
**ALL SIGNS ARE (36"x36" TYPICAL) EXCEPT WITHIN WSDOT LIMITED ACCESS OR ROW**  
(1) ALL SIGN SPACING MAY BE ADJUSTED TO ACCOMMODATE INTERCHANGE RAMP, AT GRADE INTERSECTIONS AND DRIVEWAYS.  
(2) THE SPACING MAY BE REDUCED IN URBAN AREAS TO FIT ROADWAY CONDITIONS.



24-131  
12TH & PIONEER POLE TRANSFER  
1110 W PIONEER AVE  
PUYALLUP, WA 98371

REV	DATE	DESCRIPTION OF CHANGE	BY	QC

CODE: 24-131  
05/23/2024  
PROJECT MANAGER: JS  
PM CONTACT INFORMATION:  
Jamie Stidhams  
(P): (253) 961-2537  
(E): jstidhams@teamcannon.com  
SCALE:  
  
DRAWN BY: AB  
**TRAFFIC CONTROL**  
1 / 1



CROSSWALKS TO REMAIN OPEN DURING TIME OF CONSTRUCTION