

# Architectural Metal Roofing and Siding COLOR CHART

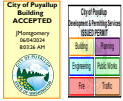


PRRF20240884

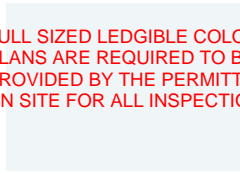
## STANDARD COLORS

DURA TECH™ 5000 - Premium 70% Fluoropolymer (PVDF) Paint system

FULL SIZED LEDGIBLE COLOR PLANS ARE REQUIRED TO BE PROVIDED BY THE PERMITTEE ON SITE FOR ALL INSPECTIONS



**ZINCALUME® Plus\***  
SRI: 64 • LRV: 67



**Cool REGAL WHITE**  
SRI: 88 • LRV: 75



**Cool PARCHMENT**  
SRI: 58 • LRV: 40

## PREMIUM COLOR<sup>1</sup> (Subject to upcharge)



**VINTAGE®<sup>1</sup>**  
SRI: 22 • LRV: 20



**Cool SIERRA TAN**  
SRI: 55 • LRV: 34



**Cool PEBBLE**  
SRI: 48 • LRV: 27



**Cool WALNUT**  
SRI: 38 • LRV: 18

## METALLIC COLORS<sup>1</sup>

DURA TECH™ mx  
Premium Fluoropolymer (PVDF)  
Pearlescent Paint system  
(Subject to upcharge)



**Cool WEATHERED COPPER**  
SRI: 34 • LRV: 11



**Cool DARK BRONZE**  
SRI: 32 • LRV: 8



**Cool TERRA-COTTA**  
SRI: 41 • LRV: 15



**Cool METALLIC SILVER<sup>1</sup>**  
SRI: 65 • LRV: 50



**Cool COLONIAL RED**  
SRI: 35 • LRV: 9



**Cool OLD TOWN GRAY**  
SRI: 43 • LRV: 27



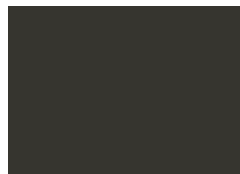
**Cool ZINC GRAY**  
SRI: 39 • LRV: 20



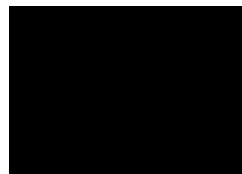
**Cool SILVERSMITH<sup>1</sup>**  
SRI: 58 • LRV: 54



**Cool SLATE GRAY**  
SRI: 33 • LRV: 12



**Cool MIDNIGHT BRONZE**  
SRI: 27 • LRV: 7



**Cool MATTE BLACK**  
SRI: 29 • LRV: 5



**Cool ZACTique® II<sup>1</sup>**  
SRI: 39 • LRV: 22



**Cool TAHOE BLUE**  
SRI: 33 • LRV: 14



**Cool REGAL BLUE**  
SRI: 29 • LRV: 10



**Cool SAGE GREEN**  
SRI: 41 • LRV: 21



**Cool METALLIC CHAMPAGNE<sup>1</sup>**  
SRI: 54 • LRV: 33



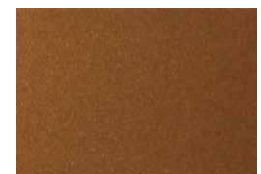
**Cool LEAF GREEN**  
SRI: 30 • LRV: 11



**Cool FOREST GREEN**  
SRI: 29 • LRV: 9



**PRE-PRIMER**  
(PRE-PRIMED 2 SIDES)



**Cool METALLIC COPPER<sup>1</sup>**  
SRI: 53 • LRV: 29

**REPRESENTATION OF COLORS MAY VARY DUE TO PRINTING LIMITATIONS.**

Sample color chips are available upon request. Consult your AEP Span representative for more information.

# DURA TECH™ Fluoropolymer Coatings



PRRF20240884



**TABLE NOTES:**

- 24 and 22 GA
- 24 GA only
- 22 GA only
- 26 GA only

SRI: Solar Reflective Index.  
LRV: Light Reflectance Value.

DURA TECH™ 5000 (PVDF)		SRI	LRV	Design Span®	Span-Lok™ hp	Select Seam®	Flex Series	Prestige Series®	Perception Collection®	Flush Panel	HR-36®	Box Rib™	Nu-Wave® Corrugated	PBR Panel	U-Panel	Mini-V-Beam™	Flat Sheet 46"	Flat Sheet 48 3/8"
Cool Regal White*	88	75	●	●	●	□	●	□	●	●	●	●	●	●	●	●	●	●
Cool Parchment	58	40	●	●	●	□	●	□	●	●	●	●	○	○	○	●	●	●
Cool Sierra Tan	55	34	●	●	●	□	●	□	●	●	●	●	○	○	○	●	●	●
Cool Pebble	48	27	●	●	●	□	●	□	●	○	○	○				○	●	●
Cool Walnut	38	18	●	●	●	□	●	□	●	○	○	○				○	●	●
Cool Weathered Copper	34	11	●	●	●	□	●	□	●	●	●	●	○	○	○	●	●	●
Cool Dark Bronze	32	8	●	●	●	□	●	□	●	●	●	●	○	○	○	●	●	●
Cool Terra-Cotta	41	15	●	●	●	□	●	□	●	○	○	○	○	○	○	○	●	●
Cool Colonial Red	35	9	●	●	●	□	●	□	●	○	○	○	○	○	○	○	○	●
Cool Old Town Gray	43	27	●	●	●	□	●	□	●	●	●	●	○	○	○	●	●	●
Cool Zinc Gray	39	20	●	●	●	□	●	□	●	●	●	●	○	○	○	●	●	●
Cool Slate Gray	33	12	●	●	●	□	●	□	●	●	●	●	○	○	○	●	●	●
Cool Midnight Bronze	27	7	●	●	●	□	●	□	●	●	●	●				●	●	●
Cool Matte Black*	29	5	●	●	●	□	●	□	●	●	●	●	○	○	○	●	●	●
Cool Tahoe Blue	33	14	●	●	●	□	●	□	●	●	●	●	○	○	○	●	●	●
Cool Regal Blue	29	10	●	●	●	□	●	□	●	●	●	●	○	○	○	●	●	●
Cool Sage Green	41	21	●	●	●	□	●	□	●	●	●	●				●	●	●
Cool Leaf Green	30	11	●	●	●	□	●	□	●	●	●	●	○	○	○	●	●	●
Cool Forest Green	29	9	●	●	●	□	●	□	●	●	●	●	○	○	○	●	●	●
DURA TECH™ mx (PVDF) <sup>1</sup>																		
Cool Metallic Silver	65	50	●	●	●	□	●	□	●	●	●	●	○	○	○	●	●	●
Cool Silversmith	58	54	●	●	●	□	●	□	●	○	○	○				○	●	●
Cool ZACTique® II	39	22	●	●	●	□	●	□	●	●	●	●	○	○	○	●	●	●
Cool Metallic Champagne	54	33	●	●	●	□	●	□	●	●	●	●	○	○	○	●	●	●
Cool Metallic Copper	53	29	●	●	●	□	●	□	●	○	○	○				○	●	●
PREMIUM COLOR <sup>1</sup>																		
Vintage®	22	20	○	○	○	○	○	○	○	○	○	○					○	○
BARE (Clear Acrylic Coated)																		
ZINCALUME® Plus	64	67	●	●	●	●	●	●	●	●	●	●	●	●	●	●	●	●
PRE-PRIMER																		
Pre-Primed Two Sides	N/A	N/A																○

PAINT SYSTEM	SMP	PVDF
OVERALL	Better	Best
PRICE POINT	Moderate	Higher
WARRANTY	Long	Longest
DURABILITY	Improved Weatherability	Highest Weatherability
APPLICATION	Residential & Commercial	High-end, Architectural/ Commercial
OTHER ATTRIBUTES	Wide range of colors & gloss options	Excellent chalk & fade resistance

**DURA TECH™ 5000:** A premium 70% Fluoropolymer (PVDF) paint system.

**DURA TECH™ mx:** A premium Fluoropolymer (PVDF) Pearlescent paint system.

**VINTAGE® COATED METAL:** TruZinc® G90 substrate with a FEVE paint system and graffiti-resistant qualities.

**\* AVAILABLE IN ALUMINUM .040' ONLY:** Stocked in Matte Black and Regal White, and is available in 48" x 10' flat sheet.

*Material is painted on both sides. One side is Matte Black and the other is Regal White.*

**<sup>1</sup> BATCH SENSITIVITY:** Prints and metallic paint systems are batch sensitive (may have color variation) and are directional in nature. Different batches are not to be mixed on projects. AEP Span recommends requesting a sample before ordering to ensure color accuracy. AEP Span is not responsible for color variations.

**OIL CANNING:** All flat metal surfaces can display waviness commonly referred to as "oil canning". "Oil canning" is an inherent characteristic of steel products, not a defect, and therefore is not a cause for panel rejection.

SRI values in accordance with ASTM E1980 and are based on independent testing. Cool Roof Rating Council (CRRC) performance values for CA Title 24 are based on color families and will differ from those listed in table.

**REPRESENTATION OF COLORS MAY VARY DUE TO PRINTING LIMITATIONS**

Sample color chips are available upon request. Consult your AEP Span representative for more information.

**SPECIALTY PRINTS, ALUMINUM, CUSTOM COLORS, AND OTHER GAUGES AVAILABLE AS SPECIAL ORDERS**

Inquire with your outside sales representative about lead times and minimum order requirements.

FINISHES DEVELOPED BY



ZINCALUME® Plus



# DURA TECH™ 5000/mx (PVDF) Fluoropolymer Coatings

## Technical Data



PRRF20240884

Dura Tech™ coatings combine the corrosion protection of a ZINCALUME® substrate with a highly durable resin formulation and cool pigment technology to provide excellent color retention and reduces the demand for energy.



DURA TECH 5000 and DURA TECH mx	ASTM <sup>2</sup>	PERFORMANCE
Standard Film Thickness	D5796	0.15 - 0.25 mil primer, 0.70 - 0.80 mil top coat 0.50 mil backer coat (Polyester system applied over a primer)
Marine Environment Film Thickness	D5796	0.70 - 0.80 mil primer, 0.70 - 0.80 mil topcoat, 0.40 - 0.50 mil clear coat
Other unusual environmental conditions or specialized pigmentation may have different primer and clear coat requirements.		
Specular Gloss	D523	8-15% at 60° (Dura Tech 5000) 15-25% at 60° (Dura Tech mx)
Pencil Hardness	D3363	F-2H
Flexibility T-Bend	D4145	2T No loss of adhesion or evidence of cracking <sup>3</sup>
Cross Hatch Adhesion	D3359	No adhesion loss
Reverse Impact	D2794	No cracking or loss of adhesion
Abrasion, Falling Sand	D968	65 liters minimum
Flame Test	E84	Class A coating
Acid Pollutants		
20% Sulfuric Acid, 18hrs.	D1308	No bleaching
10% Muriatic Acid, 24hrs.		No color change, no blistering
Acid Rain Test	Kesternich	15 cycles minimum
Alkali Resistance	Kesternich	No effect
Salt Spray Resistance	B117	Passes 1,000 hours, coated steel <sup>3</sup>
Cyclic Salt Fog	B5894	2,000 hours passes adhesion
Humidity Resistance @ 100°	B2247	Passes 2,000 hours, coated steel <sup>3</sup>
South Florida Exposure	D2244	<5 NBS units change
UVB	D822	Passes 3,000 hours
Chalk Resistance	D4214	Rating of 8 minimum
ZINCALUME® and Galvalume® substrate	A792	55% aluminum-zinc alloy coated steel with a metallic coating weight of AZ50

Declare.

Red List Free

### FINISH WARRANTIES

Limited warranties for chalk, fade and film integrity are available in durations of up to 40 years for both Dura Tech™ 5000 and Dura Tech™ mx. All AEP Span panels are offered with a corrosion warranty on Galvalume® or ZINCALUME® substrate. Terms can be affected by factors such as environment and building use. Vintage warranty varies. Inquire for details.

### COMPOSITION & APPLICATION:

Dura Tech™ 5000/mx coatings are factory applied, oven cured formulas applied by approved coil coaters. They utilize Kynar 500® or Hylar 5000® PVDF resins and inorganic, IR reflective pigments for superior long-term performance.

### PRETREATMENT

All substrates are pre-treated in accordance with paint manufacturer's instructions. The pretreatment is to provide a suitable surface for application of the recommended primer.

### METALLIC COATINGS

With metallic coatings, minor differences in both color and appearance are normal and to be expected. It is virtually impossible to match one metallic coating to another. Due to the coil application process, striations and longitudinal patterning may also show on these products. To minimize the possible visual effects of the normal minor differences in paint and its application, an entire job should be painted at one time. Additionally, fabricated panels, flat sheets, and flashings should be orientated in the same direction for installation. Contact AEP Span representative for actual color samples prior to purchase.

**VINTAGE** - Vintage coated metal is an innovative coating process over a TruZinc® G90 metallic coated steel surface producing a beautiful, durable, aged-metallic finish.

Vintage specifications and warranty vary slightly from those stated above. Please visit [www.aepspan.com/resource-center/warranties](http://www.aepspan.com/resource-center/warranties) for details or contact an AEP Span representative for details.

<sup>2</sup> All tests performed to the latest ASTM revision. The test results set forth are representative of the results obtained by the paint manufacturer.

<sup>3</sup> Performances on HDG G90, ZINCALUME®, Galvalume®.

SRI=Solar Reflective Index. LRV=Light Reflectance Value. GA= Gauge of Steel.

SRI values in accordance with ASTM E1980 and are based on independent testing. Cool Roof Rating Council (CRRC) performance values (for CA Title 24, Energy Star) are based on color families and will differ from those listed above. Please visit [www.aepspan.com](http://www.aepspan.com) for additional information.

