


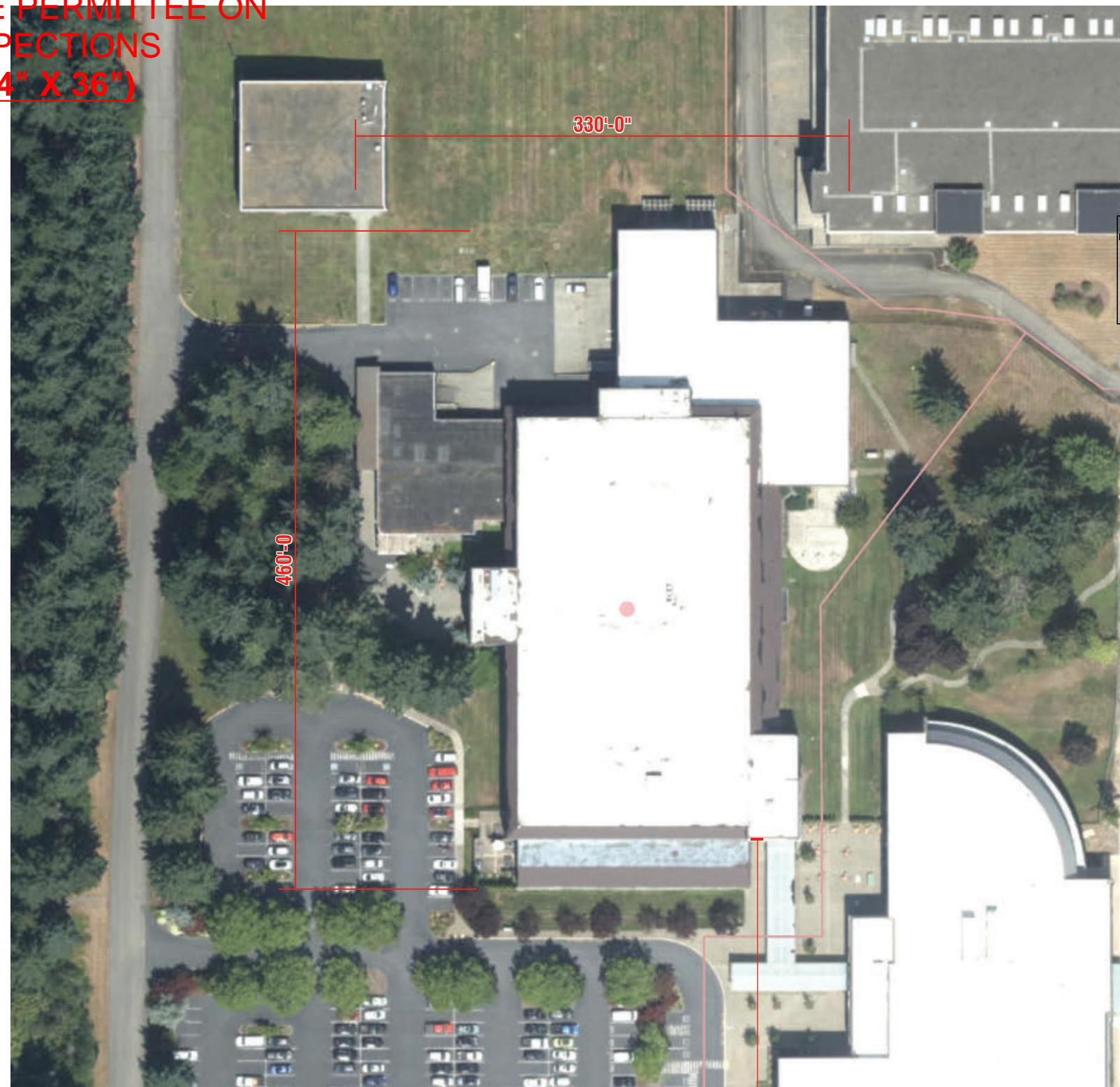
FULL SIZED LEDGIBLE COLOR PLANS ARE REQUIRED TO BE PROVIDED BY THE PERMITTEE ON SITE FOR ALL INSPECTIONS (MIN. PLAN SIZE 24" X 36")

City of Puyallup Building ACCEPTED
 JMontgomery
 06/05/2024
 3:11:47 PM



City of Puyallup Development & Permitting Services ISSUED PERMIT

Building	Planning
Engineering	Public Works
Fire	Traffic



① Vicinity Map
Scale: NTS

② Site Plan
Scale: NTS



Seattle Office
 11715 SE 5th Street
 Bellevue, WA 98005
 206.223.1122
 800.562.2854
 Fax 206.223.1123

9222
 Customer Number
145519
 Quote Number
145519 Parametrix Exterior Sign R3 Permit
 File Name

Jeff Kehm
 Salesperson
Karen Fischer
 Drawn By
 Checked By

December 5, 2023
 Date
December 14, 2023
January 22, 2024 KR
March 1, 2024 KR
 Revisions

This original artwork is protected under Federal Copyright Laws. Make no reproduction of this design concept without permission from Tube Art Group.

Approved
 Approved With Changes Noted

Customer Signature _____ Landlord Signature _____
 Date _____ Date _____

This drawing is intended to provide a reasonable representation of the final manufactured article. Fasteners and seams in materials may not be represented exactly as they will be fabricated. Colors on prints may not accurately depict specific colors.

Parametrix
 1019 39th Avenue SE, #100
 Puyallup, WA 98374

Sign Details

City of Puyallup Development & Permitting Services ISSUED PERMIT			
Building	Planning	Engineering	Public Works
Fire	Traffic		



Sign overlay in photo shown at approximate scale



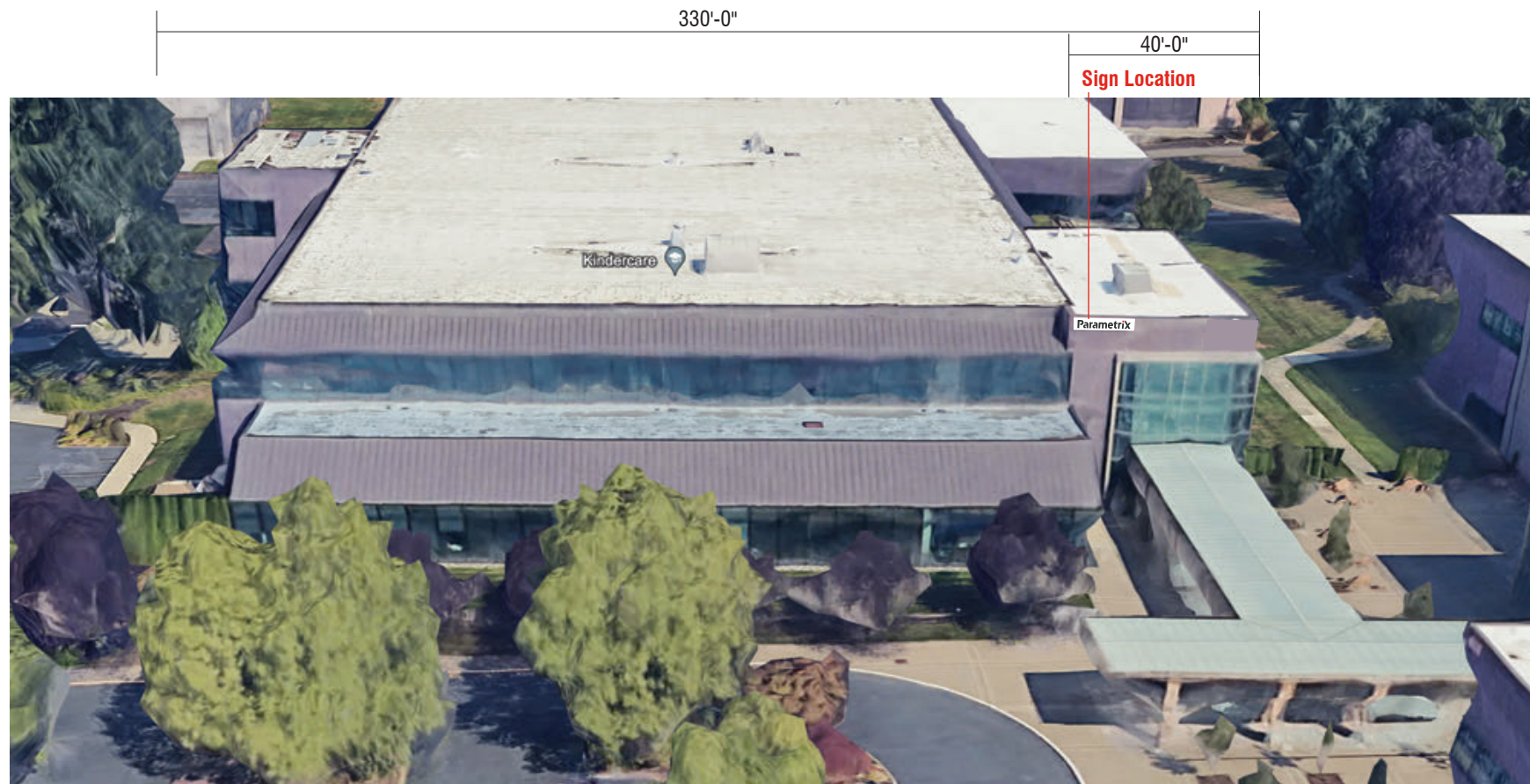
Current Conditions

Permit Information:

- Lineal measurement of street frontage: 0
- Lineal measurement of side street frontage: + zoning: 330'
- Lineal measurement of wall from which sign is attached: 40'
- Lineal measurement of canopy from which sign is attached: - N/A
- Lineal measurement of building facades:
East Facade: 460'
West Facade: 460'
North Facade: 340'
South Facade: 340'
- Total lineal measurement of all walls facing a public street: 460'
- Total square footage of existing signs on site: This will be 0 once we take down WCG. WCG is approx. 15' x 6'
- Attachment method: 1/4" Toggle Bolts, two (2) every 4'
- Dimensions: 2'-0" x 11'-2 3/8"
- Sign Weight: 139lbs
- Construction Materials: Aluminum sheet and stick. Acrylic and plastic

Scope of Work

Manufacture and install one (1) new set of illuminated channel letters onto a new aluminum wall mounted sign. To replace existing sign with old brand graphic.



① South Elevation
Scale: NTS

APPROVED PLAN
CITY OF PUYALLUP
PLANNING DIVISION

APPROVED BY: ARamirez

DATE: 05/21/2024

CASE NO.: PRSG20240755

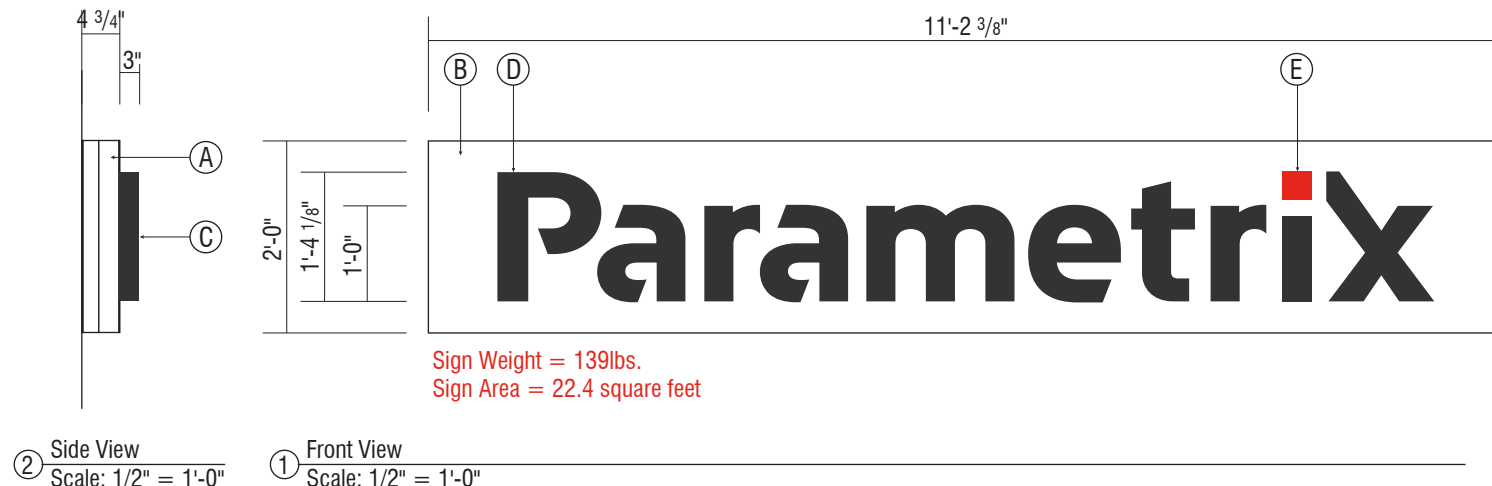
CONDITIONS:

COLORS/MATERIALS PALETTE

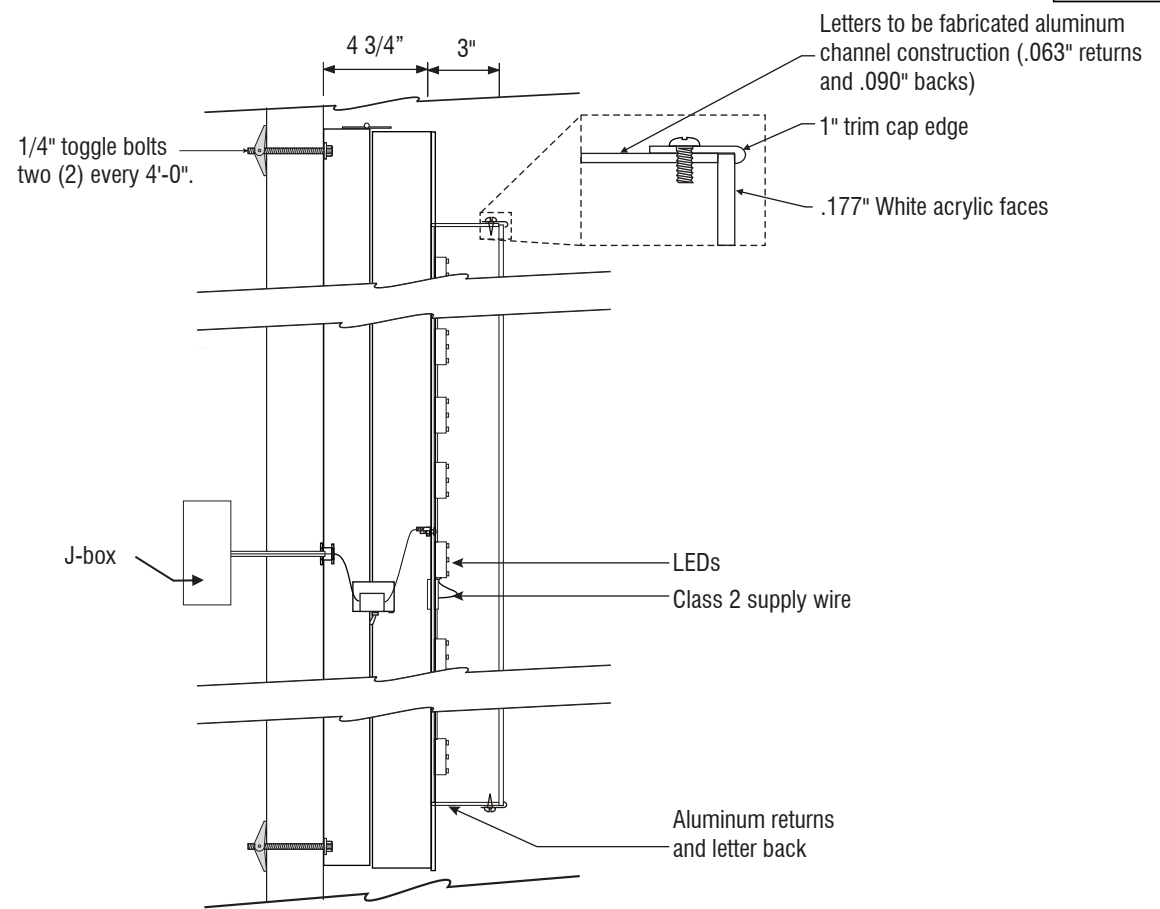
- 3M Dual color 3635-222 perforated vinyl overlaminates (or equiv). Black to match SW Iron Ore 7069 satin finish
- 3M Red #230-33 and Red channel coil. Red to match SW Stop Red 6869
- Matthews standard White Paint, satin finish.

PRSG20240755

City of Puyallup Development & Permitting Services ISSUED PERMIT	
Building	Planning
Engineering	Public Works
Fire	Traffic



Sign Weight = 139lbs.
Sign Area = 22.4 square feet



Manufacture and install one (1) single face cabinet with face lit/halo lit channel letters to replace an existing sign.

- Current sign was built by TAG WO #115250. Fabricate and install one new sign with new branding graphics as shown.
 Note that new sign must match the existing sign size, to avoid needing to repaint fascia.
- (A) Cabinet frame to be 2" x 1" aluminum channel with aluminum extrusion retainer, paint Matthews White satin finish.
 - (B) Face to be 1/8" aluminum with no seams, paint Matthews White satin finish.
 - (C) "Parametrix" logotype to be fabricated 3" deep channel construction, black painted finish.
 - (D) Letter faces will be white acrylic, with 1" black trim cap edge. All copy (except for dot on "i") will have day/night black perforated vinyl applied to the first surface, so the letters will appear black during the day, but will light white at night. Concealed weep holes to eliminate light leaks.
 - (E) The dot on the "i" will be fabricated in the same way as other copy, but will have 3" red channel returns with a 1" red trim cap edge, and a translucent red acrylic face. Match acrylic closest to red vinyl #230-33.
 - (F) Illumination to will be 6500K White Sloan Prism LEDs. Illuminate dot in "i" with red LEDs if white is not providing optimum lighting.
 - (G) Channel letters will be mounted flush to the background.
 - (H) Background cabinet will house the power supplies and will be flush mount to wall with 1/4" toggle bolts two (2) every 4'-0".

Note:
Placement of new sign must also match the existing sign location, to avoid needing to repaint fascia.



Simulated Evening View



Proposed Conditions



Current Conditions



Seattle Office 11715 SE 5th Street Bellevue, WA 98005 206.223.1122 800.562.2854 Fax 206.223.1123	9222 Customer Number 145519 Quote Number 145519 Parametrix Exterior Sign R3 Permit File Name	Jeff Kehm Salesperson Karen Fischer Drawn By Checked By	December 5, 2023 Date December 14, 2023 January 22, 2024 KR March 1, 2024 KR Revisions
--	--	---	---

This original artwork is protected under Federal Copyright Laws. Make no reproduction of this design concept without permission from Tube Art Group.

Approved
 Approved With Changes Noted

Customer Signature _____ Landlord Signature _____
 Date _____ Date _____

This drawing is intended to provide a reasonable representation of the final manufactured article. Fasteners and seams in materials may not be represented exactly as they will be fabricated. Colors on prints may not accurately depict specific colors.

Parametrix
1019 39th Avenue SE, #100
Puyallup, WA 98374

Sign Details