

**City of Puyallup
Building
ACCEPTED**

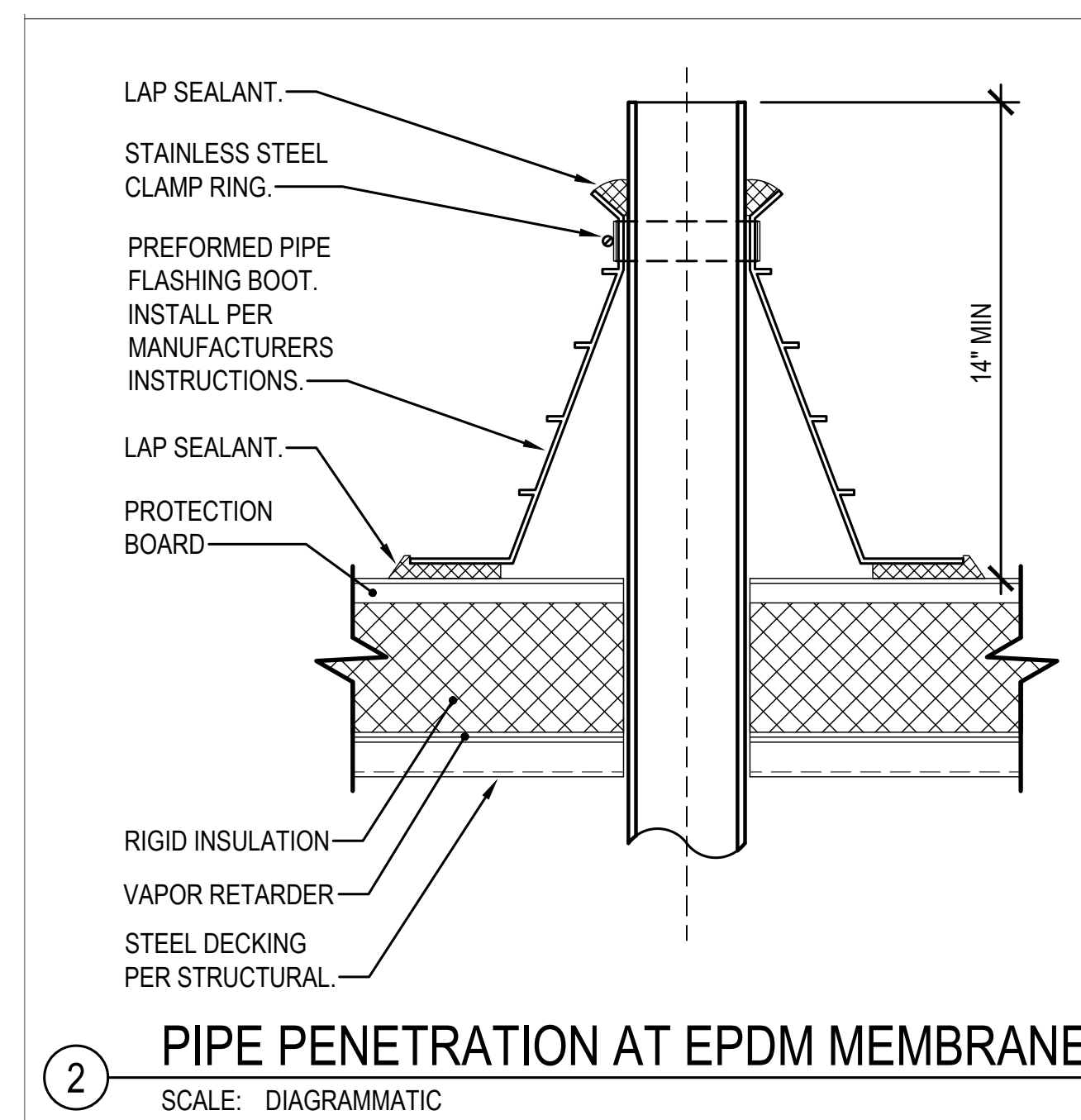
JMontgomery
06/07/2024
2:18:00 PM



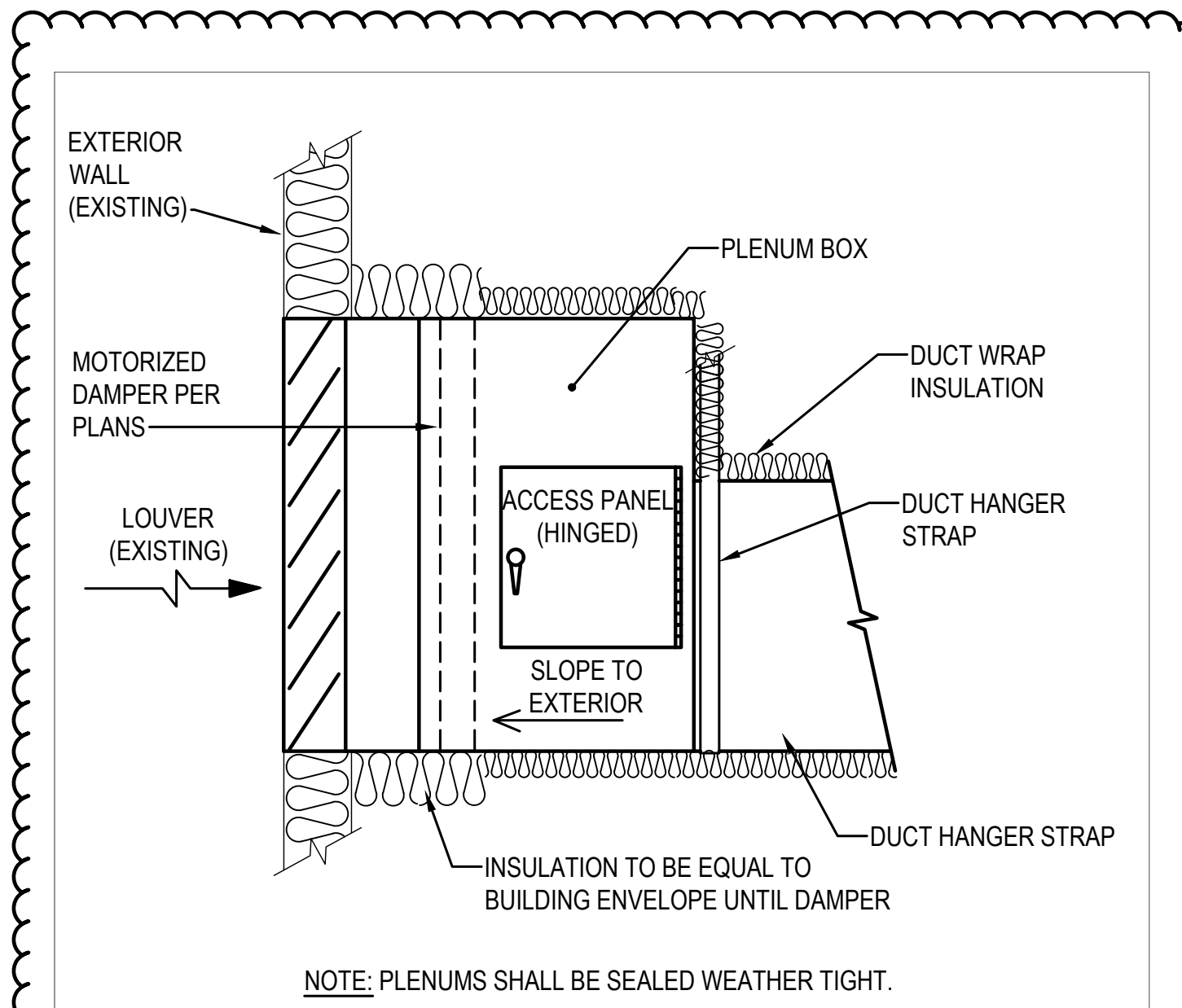
PRCTI20231574

City of Puyallup Development & Permitting Services ISSUED PERMIT	
Building	Planning
Engineering	Public Works
Fire	Traffic

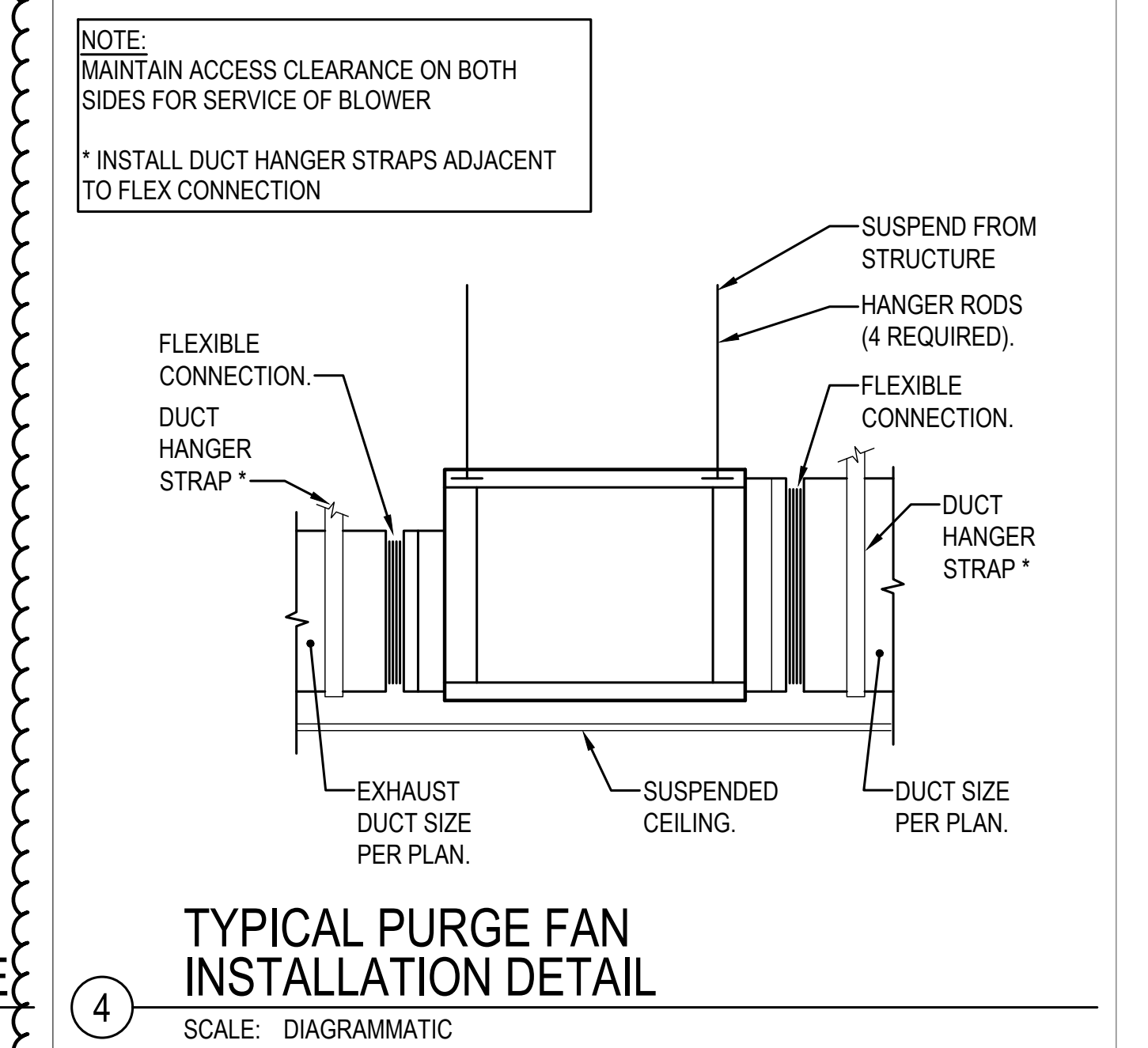
REVISION TO MEET DOH REQUIREMENT.



2 PIPE PENETRATION AT EPDM MEMBRANE
SCALE: DIAGRAMMATIC



3 DUCT AT LOUVER INSTALLATION DETAIL
SCALE: DIAGRAMMATIC



4 TYPICAL PURGE FAN INSTALLATION DETAIL
SCALE: DIAGRAMMATIC

MECHANICAL LEGEND

HVAC			
SYMBOL	DESCRIPTION	SYMBOL	DESCRIPTION
[Symbol]	SUPPLY DUCT UP	[Symbol]	RECTANGULAR DUCT SQUARE ELBOW UP
[Symbol]	SUPPLY DUCT DOWN	[Symbol]	RECTANGULAR DUCT, RADIUS ELBOW UP
[Symbol]	RETURN, RELIEF, TRANSFER, OSA DUCT UP	[Symbol]	RECTANGULAR DUCT, SQUARE ELBOW DOWN
[Symbol]	RETURN, RELIEF, TRANSFER, OSA DUCT DOWN	[Symbol]	RECTANGULAR DUCT, RADIUS ELBOW DOWN
[Symbol]	EXHAUST DUCT UP	[Symbol]	ROUND DUCT ELBOW UP
[Symbol]	EXHAUST DUCT DOWN	[Symbol]	ROUND DUCT ELBOW DOWN
XØ	ROUND DUCT	[Symbol]	FLEXIBLE DUCT
[Symbol]		[Symbol]	BACKDRAFT DAMPER (BDD)

PLUMBING			
SYMBOL	DESCRIPTION	SYMBOL	DESCRIPTION
[Symbol]	ACID VENT	[Symbol]	DOMESTIC COLD WATER (CW)
[Symbol]	ACID WASTE	[Symbol]	DOMESTIC HOT WATER (HW)
[Symbol]	NON POTABLE	[Symbol]	DOMESTIC HOT WATER CIRCULATING (HWC)
[Symbol]	GATE VALVE (GV)	[Symbol]	SOIL, WASTE (S, W)
[Symbol]	GLOBE VALVE	[Symbol]	VENT (V), OR HIDDEN BELOW WASTE
[Symbol]	BUTTERFLY VALVE	[Symbol]	WASTE OR VENT UP
[Symbol]	BALL VALVE	[Symbol]	WALL CLEANOUT
[Symbol]	BALANCING COCK (BC)	[Symbol]	FLUSH CLEANOUT (FCO/SCO)
[Symbol]	PIPE DOWN	[Symbol]	CLEAN OUT (CO)
[Symbol]	PIPE UP	[Symbol]	IN LINE WASTE CONNECTION
[Symbol]	BRANCH-TOP CONNECTION	[Symbol]	P-TRAP
[Symbol]	BRANCH-BOTTOM CONNECTION	[Symbol]	BRANCH PIPE DOWN
[Symbol]	BRANCH-SIDE CONNECTION	[Symbol]	BRANCH PIPE UP
[Symbol]	FLOW DIRECTION	[Symbol]	TEE & UP
[Symbol]	VALVE IN RISER / DROP	[Symbol]	TEE
[Symbol]	FLOOR DRAIN	[Symbol]	ELBOWS, 90° & 45°
[Symbol]	CROSSING LINES, NON CONNECTING	[Symbol]	CAP
[Symbol]	PIPE CONTINUATION	[Symbol]	TRAP PRIMER
MC	MECHANICAL CONTRACTOR	POC	POINT OF CONNECTION
EC	ELECTRICAL CONTRACTOR	BFF	BELOW FINISHED FLOOR
GC	GENERAL CONTRACTOR	AFF	ABOVE FINISHED FLOOR

PLUMBING FIXTURE SCHEDULE											
UNIT NO	FIXTURE	MOUNTING	MANUFACTURER AND MODEL NUMBERS				W	V	HW	CW	REMARKS
P-1	LAB STATION	FLOOR	STATION/FAUCET/SINK:	SCHOOL OUTFITTERS KINETIC MODULAR DOUBLE LAB STATION W/ EPOXY SINK		2"	1-1/2"	1/2"	1/2"	SET MAXIMUM HOT WATER DELIVERY TEMPERATURE AT 105°F. PROVIDE MIXING VALVE WITH MOUNTING BRACKET, BRADLEY MODEL 545-2456. SINK AND FAUCET BY OTHERS. STOPS, AND FITTINGS BY MC.	
			SUPPLIES:	MCGUIRE LFBV216SCC							
			TRAP:	ZURN Z3A-PPTRAP							
			MIXING VALVE:	BRADLEY 559-4000							
P-2	EQUIPMENT CLEAN UP SINK	COUNTER	SINK:	FURNISHED BY OWNER (SALVAGED FROM SCIENCE 02-238)		2"	1-1/2"	1/2"	1/2"	ADA COMPLIANT. PROVIDE WITH PLUMBEREX P-TRAP AND 2 VALVE & SUPPLY ADA COVERS MODEL #X4333. LOCATE ACID TRAP IN ADJACENT CASEWORK MODULE FOR ADA FRONT APPROACH. EYE WASH ADD ONS: NON-AERATED EYE WASH OUTLETS, THERMOSTATIC MIXING VALVE FOR TEPID WATER. EYE WASH MIXING VALVE SET TO 85°F. FAUCET ADD ONS: THERMOSTATIC MIXING VALVE FOR TEPID WATER. FAUCET MIXING VALVE SET TO 105°F. COORDINATE NEW FAUCET WITH SALVAGED SINK.	
			FAUCET & EMERGENCY EYE WASH COMBO:	SPEAKMAN SEF-1800-8							
			SUPPLIES:	MCGUIRE LFBV216SCC							
			ACID NEUTRALIZATION:	ZURN Z3A-PHX							
			MIXING VALVE:	BRADLEY 559-4000							
P-3	EMERGENCY SHOWER ADA	WALL	UNIT:	STINGRAY T3035		-	-	1-1/4"	1-1/4"	BARRIER-FREE. WITH INTEGRATED MIXING VALVE SET TO 85°F. EPOXY COATED PIPE. ABS SHOWERHEAD.	
FD	FLOOR DRAIN	FLOOR	UNIT:	JR SMITH 2005		*	*	-	-	*SEE PLANS FOR WASTE AND VENT CONNECTION SIZE	

PURGE FAN SCHEDULE																					
UNIT NO	MANUFACTURER	MODEL	LOCATION	ACTUAL PERFORMANCE							INTERLOCK	MOTOR SPECIFICATIONS							REMARKS		
				MAX CFM	MIN CFM	TOTAL EXTERNAL SP (N. WG)	FAN RPM	POWER (HP)	DBA	SONE S		SIZE (HP)	VOLT	HZ	PH	ENC	RPM	EC MOTOR		MOTOR STARTER	DISCONNECT FURNISHED BY
PF-1	GREENHECK	SQ-140HP-VG	SCIENCE CLASSROOM 325	1600	465	0.3	1482	0.36	65	14.4	EMCS	1	115	60	1	TENV	1725	VARIGREEN	NO	EC	1, 2, 3, 4, 5

- NOTES
- SPEED CONTROL VIA MOTOR 0-10V INPUT (0-1.9V: OFF COMMAND, 2-10V: 20% OF NOMINAL RPM TO MAX SET RPM).
 - PROVIDE WITH SINGLE POINT POWER CONNECTION.
 - FAN SPEED SHALL VARY TO MAINTAIN A NEGATIVE PRESSURE OF 0.05" W.G. AS SENSED BY A SPACE MOUNTED PRESSURE SENSOR.
 - OPEN MOTORIZED DAMPER AND CONFIRM VIA END SWITCH PRIOR TO STARTING FAN. WHEN FAN SHUTS OFF, CLOSE THE MOTORIZED DAMPER.
 - PROVIDE DAMPER AND FAN STATUS AT OPERATOR'S TERMINAL.

ELECTRONIC TRAP PRIMER SCHEDULE							
UNIT NO	MANUFACTURER	MODEL	LOCATION	NUMBER OF TRAPS SERVED	ELECTRICAL VOLTS	PH	REMARKS
TP-1	PRECISION PLUMBING PRODUCTS	MP-500-115V	STORAGE 01-319A	1	120	1	1

- NOTES
- LOCATE POWER DISCONNECT ADJACENT TO TRAP PRIMER.

ARCHITECT
studio MENG STRAZZARA
 2001 WESTERN AVE. STE# 200, SEATTLE, WA 98101
 www.studio-meng.com | P: 206.987.3707
 CONSULTANT
BCE engineers, inc.
 6021 12th Street East, Suite 200
 File, Washington 98424
 T: 253.922.0446
 F: 253.922.0896
 CLIENT/OWNER
PUYALLUP SCHOOL DISTRICT
 A Tradition of Excellence

TITLE
SCIENCE CLASSROOM & SCIENCE PREP ROOM TI AT PUYALLUP HIGH SCHOOL
 105 7TH ST SW PUYALLUP, WA 98371

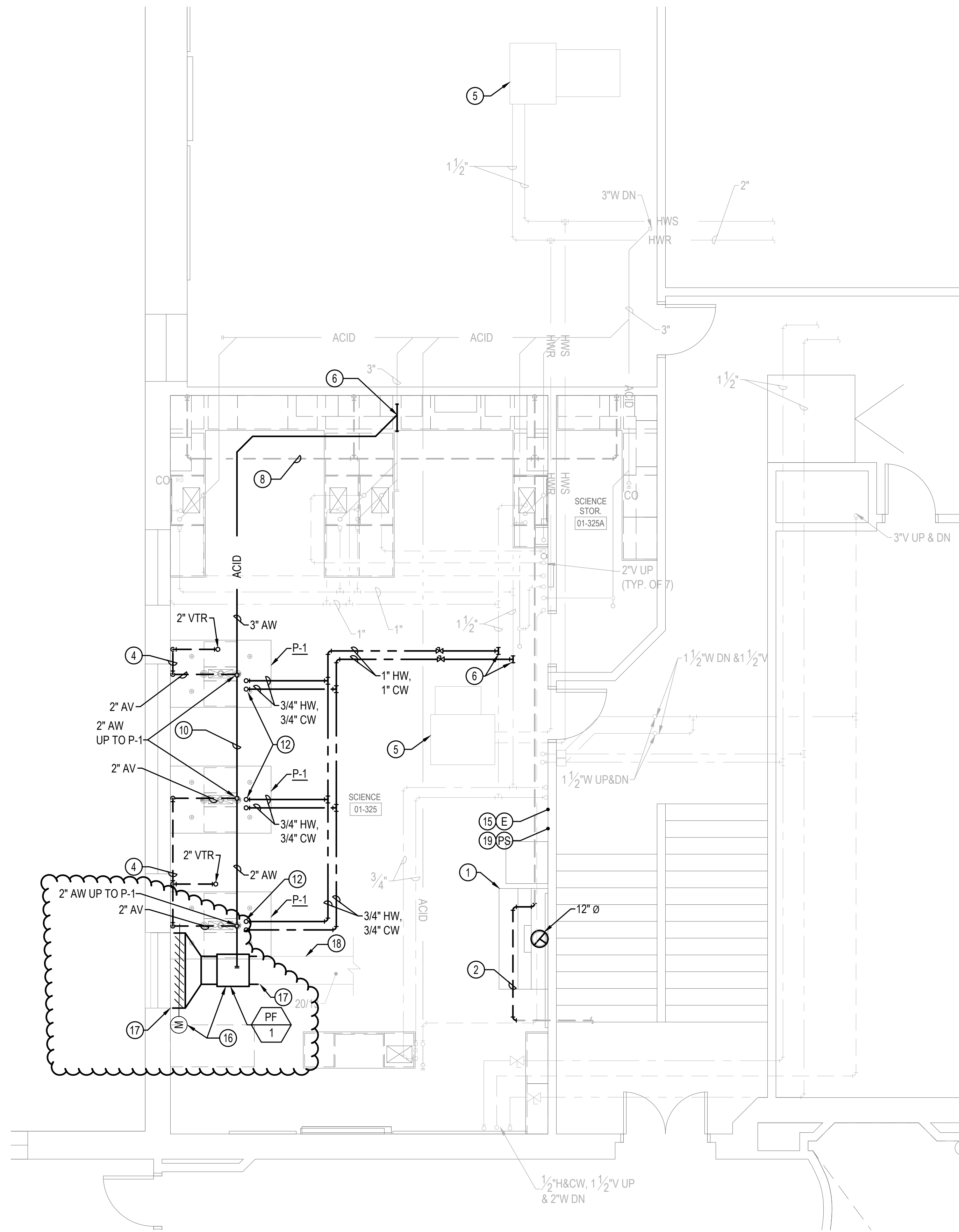
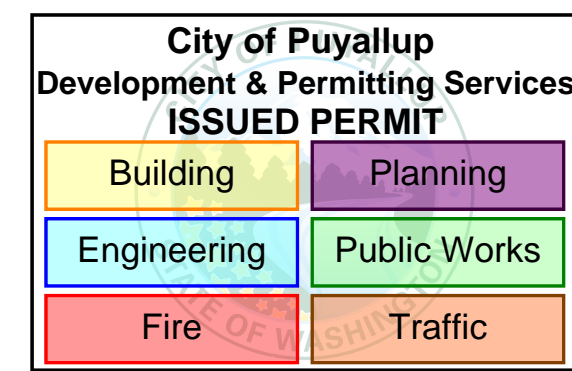


ISSUED: _____ DATE: _____
 PERMIT SET OCT. 26 2023
 TPCD CORR#1 DEC 13, 2023

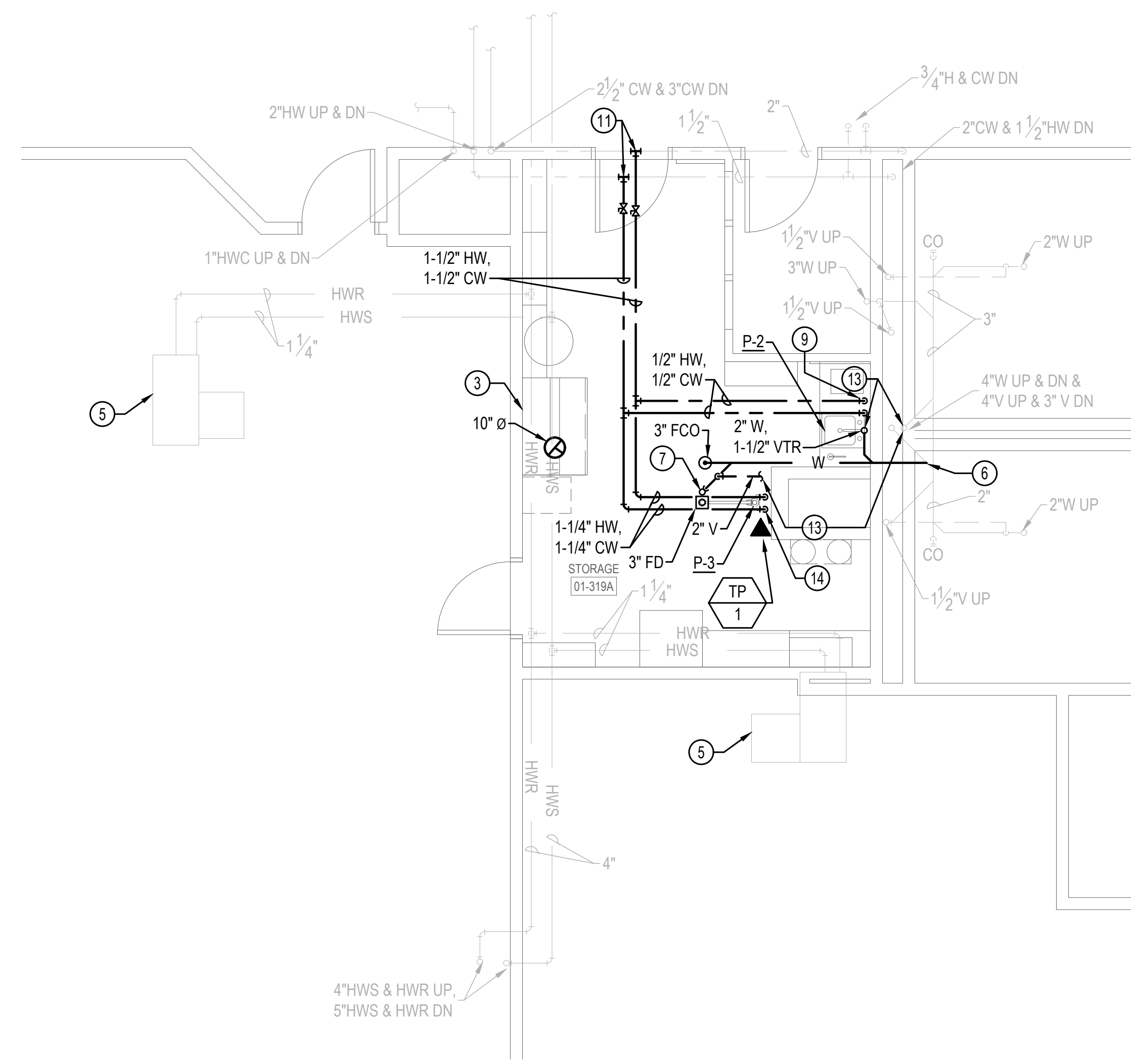
MECHANICAL LEGEND, SCHEDULES AND DETAILS

Building Permit #: _____
 Site Permit #: _____
 Owner's Project #: _____
 Architect's Project #: 2023106
 Drawn By: TT
 Checked By: JH

M01-100



1 01-325 & 01-325A SCIENCE CLASSROOM ENLARGED MECHANICAL FLOOR PLAN
SCALE: 1/4" = 1'-0"



2 01-319A STORAGE ENLARGED MECHANICAL FLOOR PLAN
SCALE: 1/4" = 1'-0"

GENERAL NOTES

- DUCTWORK MAY BE SHOWN OFFSET FOR CLARITY. PROVIDE ADDITIONAL OFFSETS AS REQUIRED TO FACILITATE INSTALLATION.
- DUCT SIZE REPRESENTS INNER DIMENSIONS OF THE DUCT. ITEMS IN LIGHT ARE EXISTING ON THE FLOOR BELOW UNLESS OTHERWISE NOTED.
- ITEMS IN LIGHT ARE SHOWN FOR REFERENCE ONLY.
- PIPE SIZES SHOWN ON EXISTING PIPING ARE FOR REFERENCE ONLY.

CONSTRUCTION NOTES

- SALVAGED FUME HOOD FROM SCIENCE PREP 02-130. PROVIDE NEW EXHAUST DUCTWORK UP TO GOOSENECK WITH BIRDSCREEN ON ROOF. CONTRACTOR SHALL FIELD VERIFY EXHAUST IS A MINIMUM 10' AWAY FROM ANY INTAKE PRIOR TO INSTALLATION. DUCTWORK TO BE WELDED STAINLESS. THERE WILL BE NO WATER CONNECTION AT NEW LOCATION.
- OFFSET EXISTING ACID VENT TO ALLOW FOR NEW 12" Ø DUCT PENETRATION.
- SALVAGED FUME HOOD FROM 02-232. PROVIDE NEW EXHAUST DUCTWORK UP TO GOOSENECK WITH BIRDSCREEN ON ROOF. CONTRACTOR SHALL FIELD VERIFY EXHAUST IS A MINIMUM 10' AWAY FROM ANY INTAKE PRIOR TO INSTALLATION. DUCTWORK TO BE WELDED STAINLESS STEEL.
- ROUTE 2" V IN FURRED WALL AND UP TO CEILING SPACE. COORDINATE WITH WINDOW.
- EXISTING EQUIPMENT ON FLOOR BELOW. SHOWN FOR REFERENCE ONLY.
- POINT OF CONNECTION TO EXISTING PIPING IN SECOND FLOOR CEILING SPACE.
- P-TRAP SHOWN OFFSET FOR CLARITY.
- EXISTING ACID VENT ROUTES OVERHEAD ON THIRD FLOOR.
- PIPES ARE SHOWN OFFSET FOR CLARITY. ROUTE INSIDE WALL.
- ROUTE NEW ACID WASTE TIGHT TO THE EXTERIOR WALL. COORDINATE WITH OBSTRUCTIONS ABOVE THE CEILING IN FLOOR BELOW. SHOWN OFFSET FOR CLARITY.
- POINT OF CONNECTION BETWEEN NEW AND EXISTING IN THIRD FLOOR CEILING SPACE.
- ROUTE PIPING UP WITHIN CASEWORK CHASE TO PLUMBING CONNECTIONS.
- CONNECT VENT PIPING FROM NEW P-2 FIXTURE AND 3" FD TO EXISTING 4" V AS NOTED.
- PIPES ARE SHOWN OFFSET FOR CLARITY. ROUTE INSIDE NEW DRYWALL.
- PROVIDE NEW PUSHBUTTON FOR 100% VENTILATION AIR.
- PROVIDE NEW PURGE FAN AND MOTORIZED DAMPER.
- POINT OF CONNECTION TO EXISTING DUCT.
- EXISTING RELIEF AIR DUCT. SIZE SHOWN FOR REFERENCE.
- PRESSURE SENSOR INTERLOCKED WITH PF-1.

