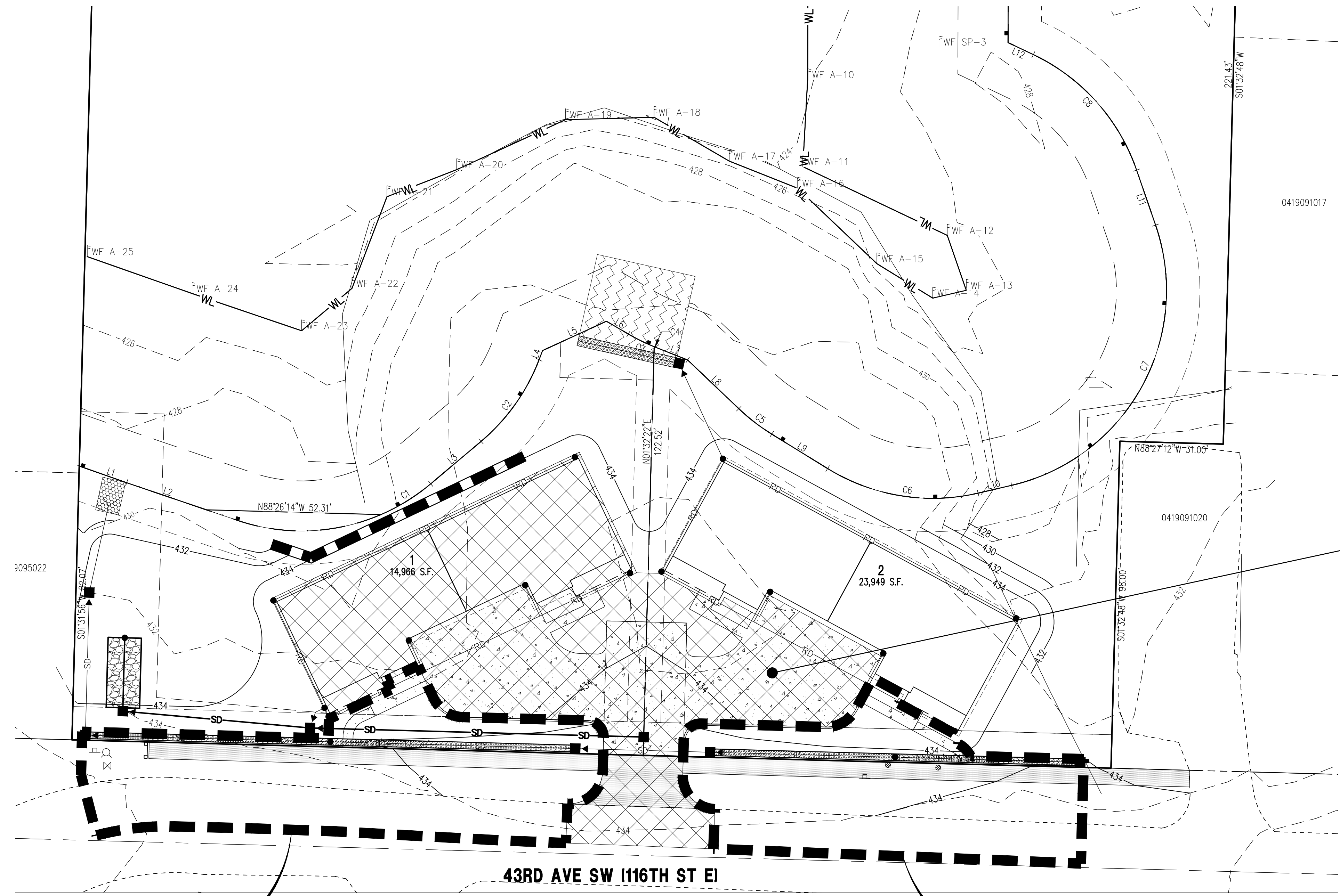
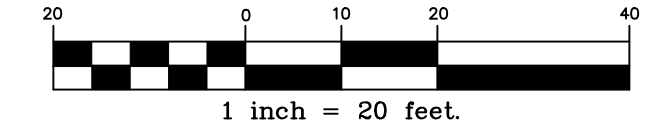


**PUYALLUP DUPLEX**  
 A PORTION OF THE NW 1/4 OF THE NW 1/4 OF SEC. 34, TWP. 20 N., RGE. 4 E.,  
 WILLAMETTE MERIDIAN, CITY OF PUYALLUP, PIERCE COUNTY, WASHINGTON



**DEVELOPED INTERCEPTOR TRENCH BASIN**

**DEVELOPED INTERCEPTOR TRENCH BASIN**

**DEVELOPED INTERCEPTOR TRENCH BASIN AREA = 0.22 AC**  
**LAND USE BREAKDOWN AREAS**  
 ROADS FLAT = 0.22 AC  
 TOTAL AREA = 0.22 AC

**FOR CONVEYANCE PURPOSES CONSERVATIVELY ASSUMES ENTIRE BASIN AREA IS IMPERVIOUS SURFACE**

No.	Int.	Date:

**C.E.S. NW INC.**  
 CIVIL ENGINEERING & SURVEYING

Phone: (253) 848-4278  
 Fax: (253) 848-4278  
 ceservices@cesanwinc.com

310 - 29TH ST. NE, SUITE 101  
 PUYALLUP, WA 98372

**Project:** PUYALLUP DUPLEX  
**DEVELOPED INTERCEPTOR TRENCH BASIN MAP**

**Client:** HC HOMES INC.  
 P.O. BOX 7707, BONNEY LAKE, WA 98391

Designed:	ENO
Drawn:	ENO
Checked:	ENO
Scale:	1"=20'
Date:	4/30/2024
Job No.:	20069

Sheet No.: **EXH**  
 1 of 1 Sheets

FEATURES CONTAINED IN THIS DRAWING, INCLUDING BUT NOT LIMITED TO, BOUNDARY, RIGHT-OF-WAY, EASEMENT, PARCEL LINES, BEARINGS, DISTANCES, WETLANDS AND BUFFERS, WERE DERIVED FROM PUBLIC RECORDS OR ACQUIRED FROM AUTOCAD DRAWINGS SUPPLIED BY OTHERS.