

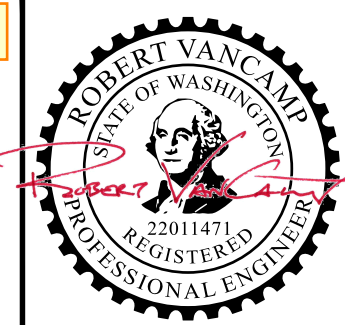
JD SPORTS - STORE #1315 SOUTH HILL MALL - SPACE #530

Approval of submitted plans is not an approval of omissions or oversights by this office or non compliance with any applicable regulations of local government. The contractor is responsible for making sure that the building complies with all applicable codes and regulations of the local government.

The approved construction plans, documents, and all engineering must be posted on the job at all inspections in a visible and readily accessible location.

Full sized legible color plans are required to be provided by the permittee on site for inspection.

PRCTI20240722



ECLIPSE ENGINEERING
385 NE QUIMBY AVENUE
BEND, OREGON 97701
(541) 389-9659
ECLIPSE-ENGINEERING.COM

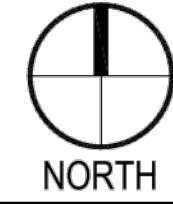


JD SPORTS - SOUTH HILL MALL
3500 SOUTH MERIDIAN,
530 # PUYALLUP, WA 98373



JD SPORTS - SOUTH HILL MALL AREA OF WORK

3500 SOUTH MERIDIAN,
530 # PUYALLUP, WA 98373



SHEET NO.	DESCRIPTION	BUILDING DESIGN DATA:
SH-0	TITLE SHEET & ADDITIONAL INFORMATION	A. OCCUPANCY TYPE(S) : M
SH-1	PARTIAL PLANS AND DETAIL SHEET	B. TYPE OF CONSTRUCTION : II-B
G-004	ARCHITECTURAL EGRESS PLAN SHEET (INCLUDED FOR REFERENCE ONLY)	C. FIRE SPRINKLER : YES

DRAWING INDEX

1. SHELVING LAYOUT PLANS HAVE BEEN PREPARED BY THE SHELVING SUPPLIER IN ACCORDANCE WITH STOCKROOM LAYOUT PREPARED BY THE ARCHITECT OF RECORD FOR THE TENANT IMPROVEMENT PROJECT.
2. TENANT'S G.C. IS REQUIRED TO FOLLOW INSTRUCTIONS NOTED ON ARCHITECTURAL TITLE SHEET PREPARED BY THE ARCHITECT OF RECORD FOR THE TENANT IMPROVEMENT PROJECT.
3. G.C. SHALL NOTIFY ARCHITECT/TENANT OF ANY DESIRED/NECESSARY MODIFICATIONS TO THE STOCKROOM LAYOUT SHOWN AND PREPARED BY THE ARCHITECT OF RECORD FOR THE TENANT IMPROVEMENT PROJECT.
4. G.C. IS REQUIRED TO COORDINATE ALL REQUIRED INSPECTIONS BY THE CITY OR THIRD PARTY INSPECTORS WHERE REQUIRED.
5. G.C. SHALL CONTACT ECLIPSE ENGINEERING IF ANY EXISTING STRUCTURAL CONDITIONS DIFFER FROM STATED ASSUMPTIONS

GENERAL CONFORMANCE

A COMMERCIAL RETAIL TENANT IMPROVEMENT. THESE DRAWINGS CONTAIN ONLY THE PARTIAL PLANS AND THE DETAILS THAT PERTAIN TO THE PROPOSED SHELVING SYSTEM(S) AND PROPER ANCHORAGE OF THE STOCKROOM'S FIXED AND MOBILE SHELVING UNITS. REFERENCE ARCHITECTURAL PLANS FOR FULL EXTENT OF TENANT IMPROVEMENT WORK.

PRODUCT CLASSIFICATION: ATHLETIC SHOES, APPAREL, & ACCESSORIES

GROUP C

COMMODITY CLASSIFICATION IV

NON HIGH PIPE

APPLICABLE BUILDING CODES: 2021 WASHINGTON STATE BUILDING CODE, ASCE 7-16, & 2012 RMI-MH16.1

SCOPE OF WORK

1. THE STORAGE SHELVING SHALL BE INSTALLED SUCH THAT THE MAXIMUM OUT-OF-PLUMB MEASUREMENT SHALL NOT EXCEED 0.5" PER 10'-0" IN HEIGHT.
2. THE OWNER SHALL MAINTAIN THE STRUCTURAL INTEGRITY BY ASSURING PROPER OPERATION, HOUSEKEEPING, AND MAINTENANCE OF THE SHELVING SYSTEM BY PROHIBITING OVERLOADING AND REGULARLY INSPECTING FOR DAMAGE.
3. UPON ANY VISIBLE DAMAGE, THE PERTINENT PORTIONS OF THE SHELVING SHALL BE UNLOADED IMMEDIATELY BY THE USER AND THE DAMAGED PORTION SHALL BE ADEQUATELY REPAIRED OR REPLACED.
4. FIXED/MOBILE RETAIL SHELVES SHALL BE RESTOCKED BY HAND. DO NOT USE A FORKLIFT OR OTHER MECHANIZED LOADER TO STOCK SHELVES.

NOTES OF CAUTION

PROJECT MANAGER
JLL PROJECT MANAGER
225 108TH AVENUE NE, SUITE #550
BELLEVUE, WA 98004
TEL: 425-345-9054
CONTACT: JEREMY DEVLIN
EMAIL: JDEVLIN@FINISHLINE.COM

CLIENT
JD SPORTS / FINISH LINE
755 JARVIS DRIVE
MORGAN HILL, CALIFORNIA 95037
TEL: 408-629-1000 (EXT #7361)
CONTACT: ELLIOT FLAUM
EMAIL: ELLIOT@SHOEPALACE.COM

ARCHITECT
MCG ARCHITECTURE
250 SUTTER STREET - SUITE #450
SAN FRANCISCO, CA 94108
TEL: 216-520-1551
CONTACT: MATT E. MAJEED
EMAIL: MMAJEED@MCGARCHITECTURE.COM

STORAGE SHELVING ENGINEER
ECLIPSE ENGINEERING, PC
365 NE QUIMBY AVENUE
BEND, OR 97701
TEL: 541-389-9659
CONTACT: ROBERT VANCAMP
EMAIL: RVANCAMP@ECLIPSE-ENGINEERING.COM

MOBILE/FIXED SHELVING LAYOUT
MOBILE MEDIA STORAGE SOLUTIONS
45 TURNER DRIVE - SUITE #2A
MIDDLETOWN, NY 10941
TEL: 845-744-8080
CONTACT: JESSICA ROBINSON
EMAIL: JRR@MOBILEMEDIASTORAGE.COM

VICINITY MAP: N.T.S

SITE LOCATION: N.T.S

NOTE: THE ARCHITECTURAL PORTION OF THE TENANT IMPROVEMENT SHALL BE COVERED UNDER A SEPARATE PERMIT. REFERENCE THE ARCHITECTURAL DRAWINGS FOR FULL FLOOR PLAN.

City of Puyallup Development & Permitting Services ISSUED PERMIT	
Building	Planning
Engineering	Public Works
Fire	Traffic

City of Puyallup Building REVIEWED FOR COMPLIANCE

BSnowden
06/14/2024
9:30:48 AM



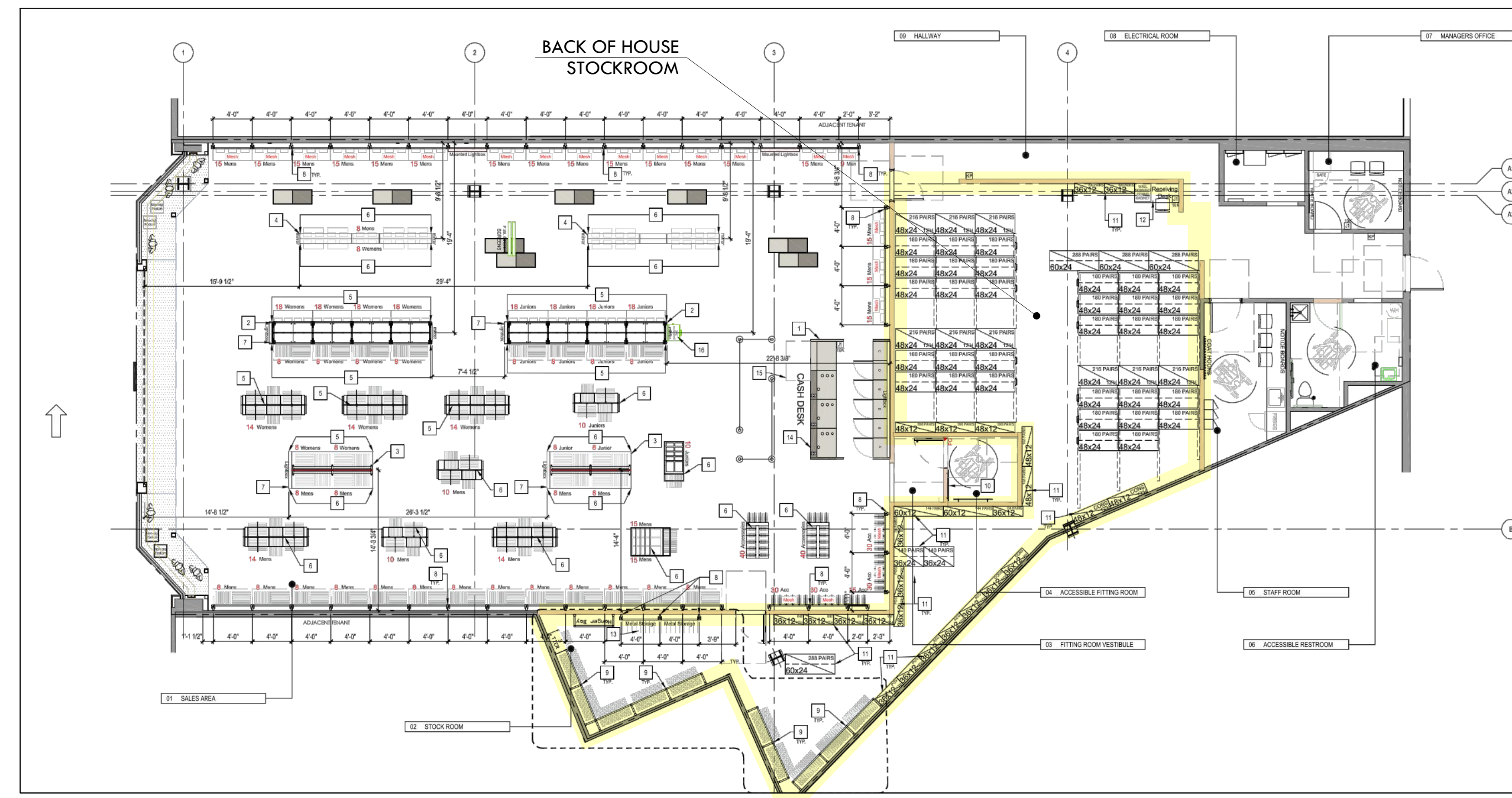
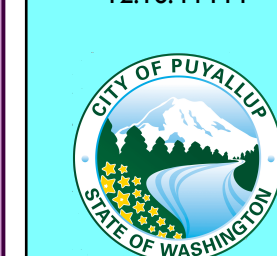
City of Puyallup Planning Division APPROVED

See permit conditions.
NComstock
05/06/2024
4:47:01 PM



City of Puyallup Development Engineering APPROVED

See permit for additional requirements.
Linda Lian
05/09/2024
12:16:44 PM



SPACE LOCATION: N.T.S

PROJECT CONTACTS

JD SPORTS - STORE #1315
SOUTH HILL MALL - SPACE #530
3500 SOUTH MERIDIAN STREET
PUYALLUP, WASHINGTON 98373

RIVET STYLE STEEL SHELVING
STORAGE SHELVING
TITLE SHEET
DRAWN: RVC
CHECKED: RVA
REVISED: RVA

ECLIPSE ENGINEERING
CONTACT INFO:
ROBERT VANCAMP, PE
BEND, OREGON
(541) 389-9659

PROJECT #: 23-12-069
DATE: 12-11-2023
SHEET

SH-0

GENERAL NOTES:

- DESIGN OF STEEL STORAGE SHELVING AS SHOWN BY THESE DRAWINGS AND CALCULATIONS ARE IN COMPLIANCE WITH THE REQUIREMENTS OF THE 2021 WSC, ASCE 7-16, & ANSI/RMI-MH16.1 (2012)
- STEEL FOR ALL SHAPES IS $F_y = 33$ KSI (EXCEPT AS NOTED)
- ALL ANCHORS ARE HILTI HUS-EZ (ESR-3027) OR APPROVED EQUAL
(SPECIAL INSPECTION REQUIRED - REFERENCE TABLE BELOW)
- (E) SLAB = MIN. 4" THICK CONCRETE SLAB-ON-GRADE W/ $F'_c = 2500$ PSI AND MIN. 500 PSF SOIL BEARING
- ALL SHELVING INSTALLATIONS MANUFACTURED IN CONFORMITY WITH THIS STANDARD SHALL DISPLAY IN ONE OR MORE CONSPICUOUS LOCATIONS A PERMANENT PLAQUE, EACH NOT LESS THAN 50 SQUARE INCHES IN AREA SHOWING THE MAXIMUM PERMISSIBLE UNIT LOAD PER LEVEL
- ALL SHELVING SHALL BE IN COMPLIANCE WITH THE CURRENT RMI STANDARDS
- THE CLEAR SPACE BELOW SPRINKLERS SHALL BE A MINIMUM OF 18 INCHES BETWEEN THE TOP OF THE STORED MATERIAL AND THE CEILING SPRINKLER DEFLECTORS
- THE SHELVING STOCKROOM WILL NOT BE OPEN TO THE PUBLIC
- SHELVING UNIT'S MAXIMUM "OUT-OF-PLUMBNESS" SHALL BE 0.5 INCH IN 10 FT
- STORAGE SHELVING CAPACITY = 75 LBS PER LEVEL

EARTHQUAKE DESIGN DATA:

- Seismic Importance Factor, $I_E = 1$
Risk Category II - Not Open to the Public
- Mapped Spectral Response Accelerations:
 $S_s = 1.264$ $S_1 = 0.436$
- Site Class = D - Default (Assumed)
- Spectral Response Coefficients:
 $S_{ds} = 1.011$ $S_{d1} = 0.542$
- Seismic Design Category = D
- Basic Seismic-Force-Resisting System(s):
Non-Building Structures, Steel Shelving
- Design Base Shear = 95 lb (MAX)
- Seismic Response Coefficient: $V_t = 0.177$
- Response Modification Factor: $R = 4$

STATEMENT OF SPECIAL INSPECTION

VERIFICATION AND INSPECTION	PERIODIC	HILTI HUS-EZ (ICC-ES ESR-3027)	INSPECTED BY
CONFIRM ANCHOR TYPE	X	3/8" DIA X 3" LONG - SECTION 4.4, 5.2, TABLE 1	INSPECTOR
CONFIRM CONCRETE COMPRESSIVE STRENGTH	X	MINIMUM 2500 PSI	
CONFIRM CONCRETE THICKNESS	X	4" MINIMUM	
HOLE DIAMETER	X	3/8" DIA X 2-3/4" LONG - SECTION 4.3, 4.4, FIGURE 4A	INSPECTOR
CLEAN OUT OF HOLE	X	BULB/BLOW OUT - SECTION 4.3, 4.4	INSPECTOR
MINIMUM ANCHOR SPACING	X	2.25" SECTION 4.4, 5.7, TABLE 2	INSPECTOR
MINIMUM EDGE DISTANCE	X	1.5" SECTION 4.4, 5.7, TABLE 2	INSPECTOR
ANCHOR EMBEDMENT	X	2.5" SECTION 4.3, 4.4, 5.2, TABLE 2, 3	INSPECTOR
TIGHTENING TORQUE	X	40 FT-LBS SECTION 4.3, 4.4, TABLE 2	INSPECTOR

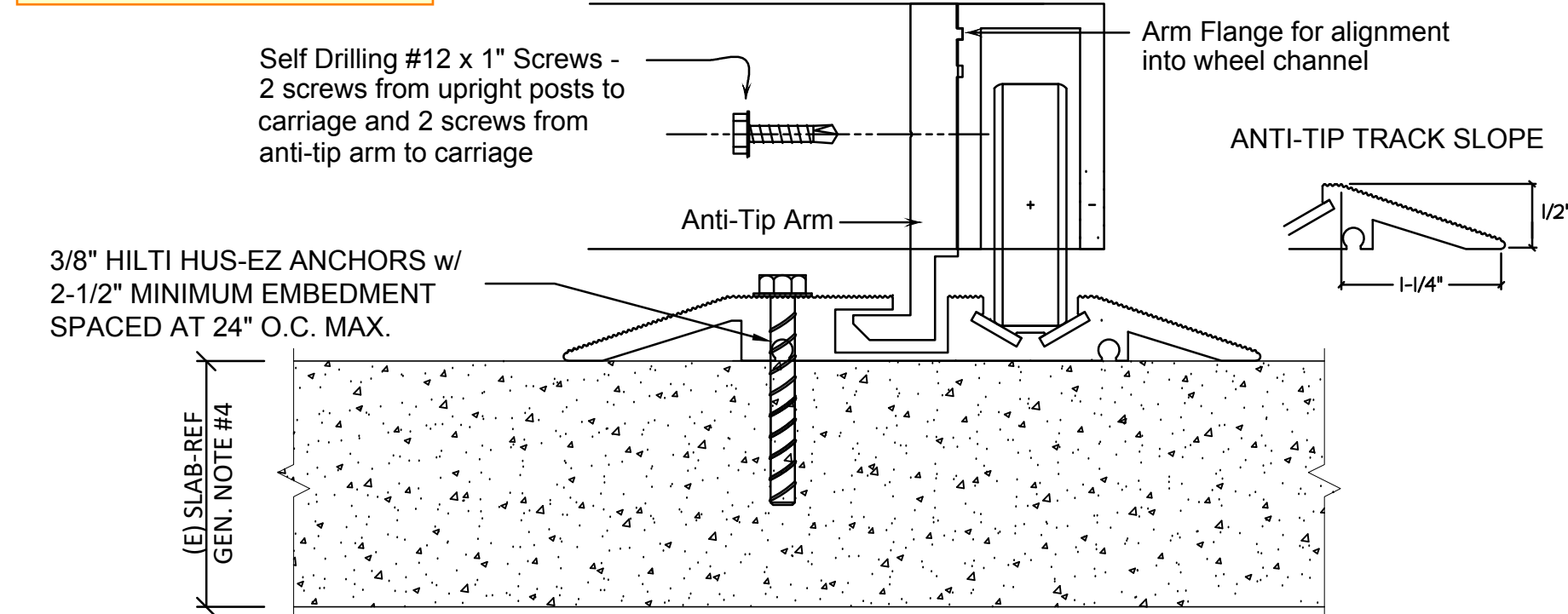
Note: Inspection to be completed by a 3rd party inspector

SCOPE OF WORK

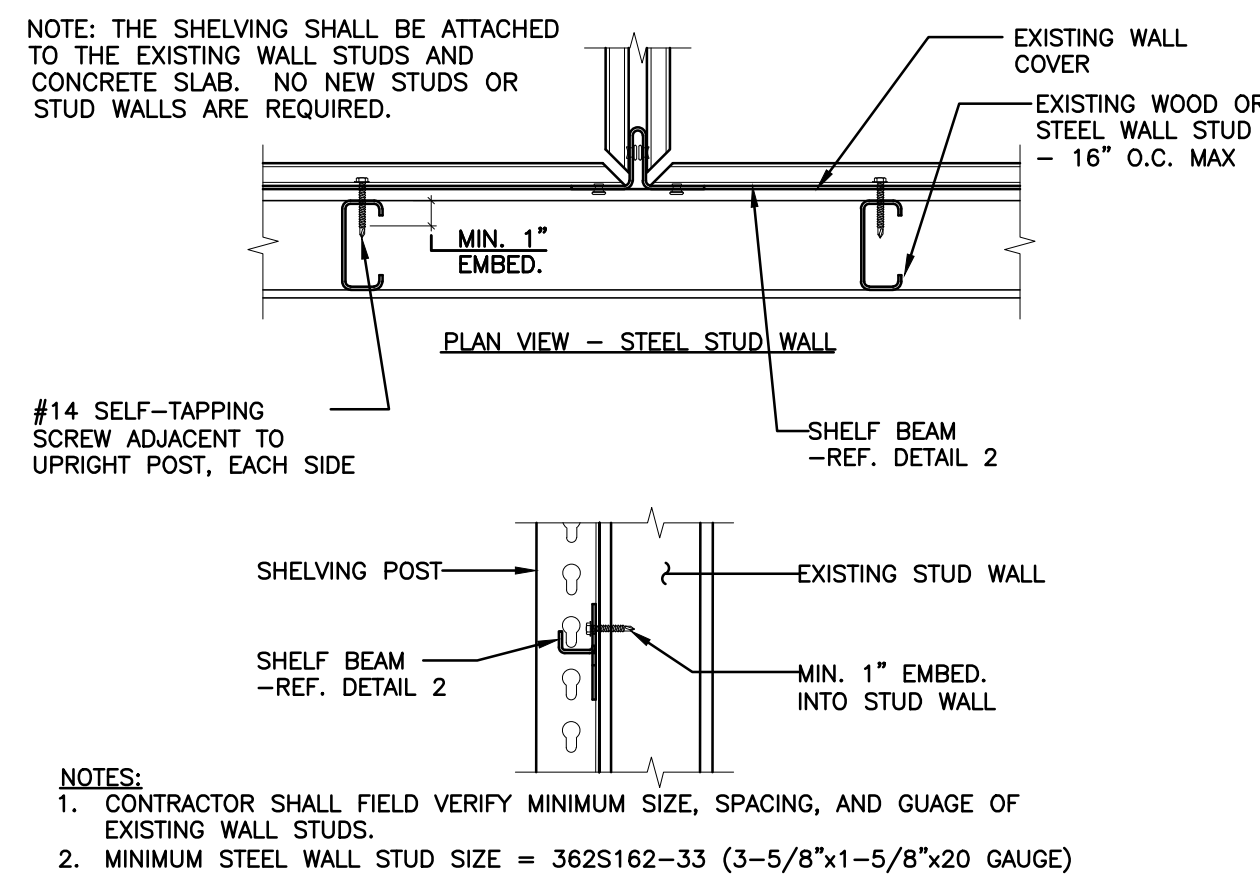
ANCHORAGE OF FIXED AND MOBILE RETAIL SHELVING UNITS. THESE DRAWINGS CONTAIN ONLY THE PLANS AND DETAILS PERTAINING TO THE PROPER ANCHORAGE OF THE BACK-OF-HOUSE FIXED AND MOBILE SHELVING SYSTEMS. REFERENCE ARCHITECTURAL PLANS FOR FULL EXTENT OF WORK. THESE SHELVING UNITS ARE NOT ACCESSIBLE TO THE GENERAL PUBLIC.

- NOTE:
- SHELVING IS MANUFACTURED BY MOBILE MEDIA STORAGE SOLUTIONS, INC
 - ALL SHELVING IS OF NEW MANUFACTURE
 - THERE IS NO WELDING ON THIS PROJECT

The final special inspection report(s) must be on site during City inspections.

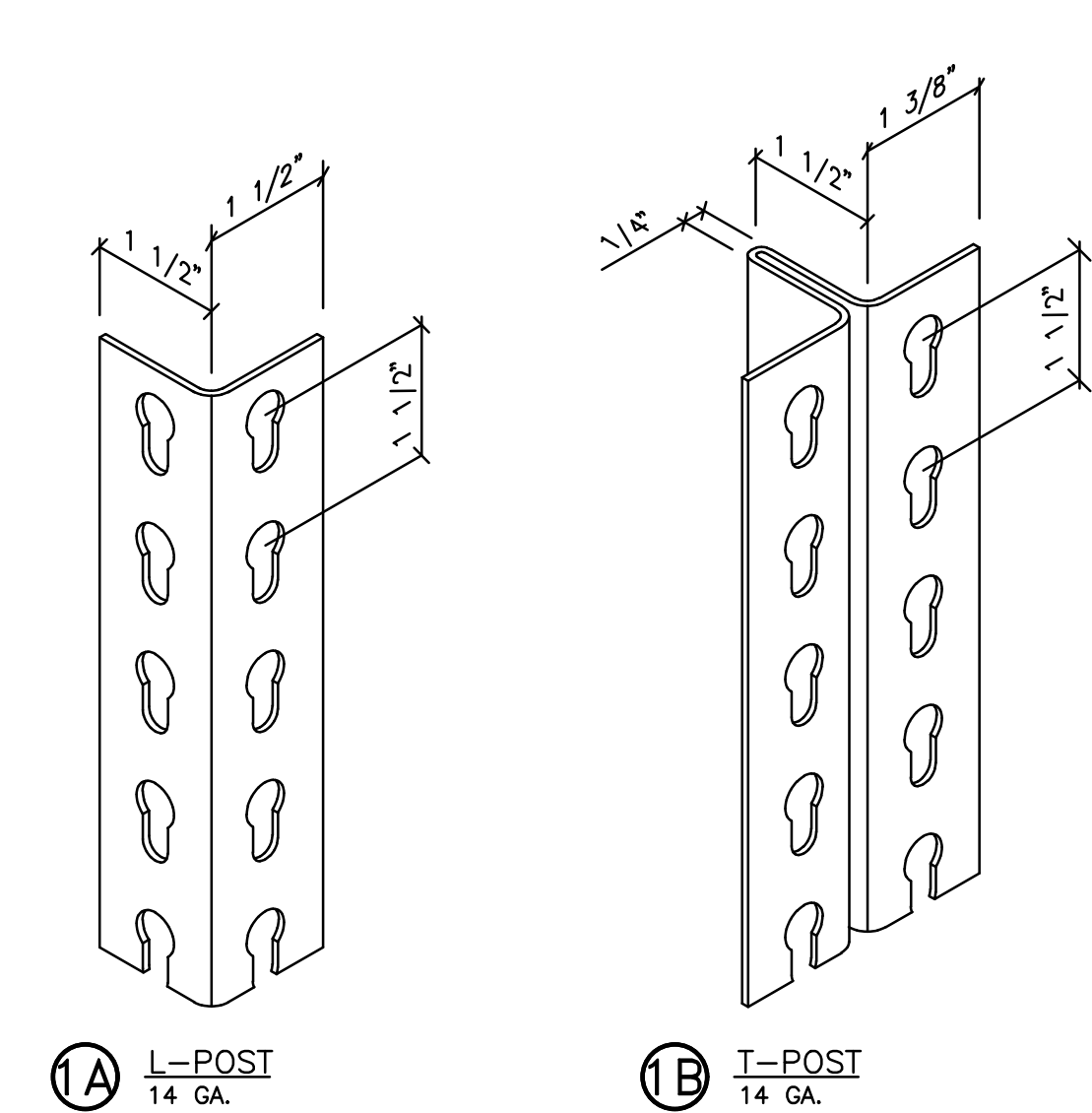


3 ANTI-TIP TRACK

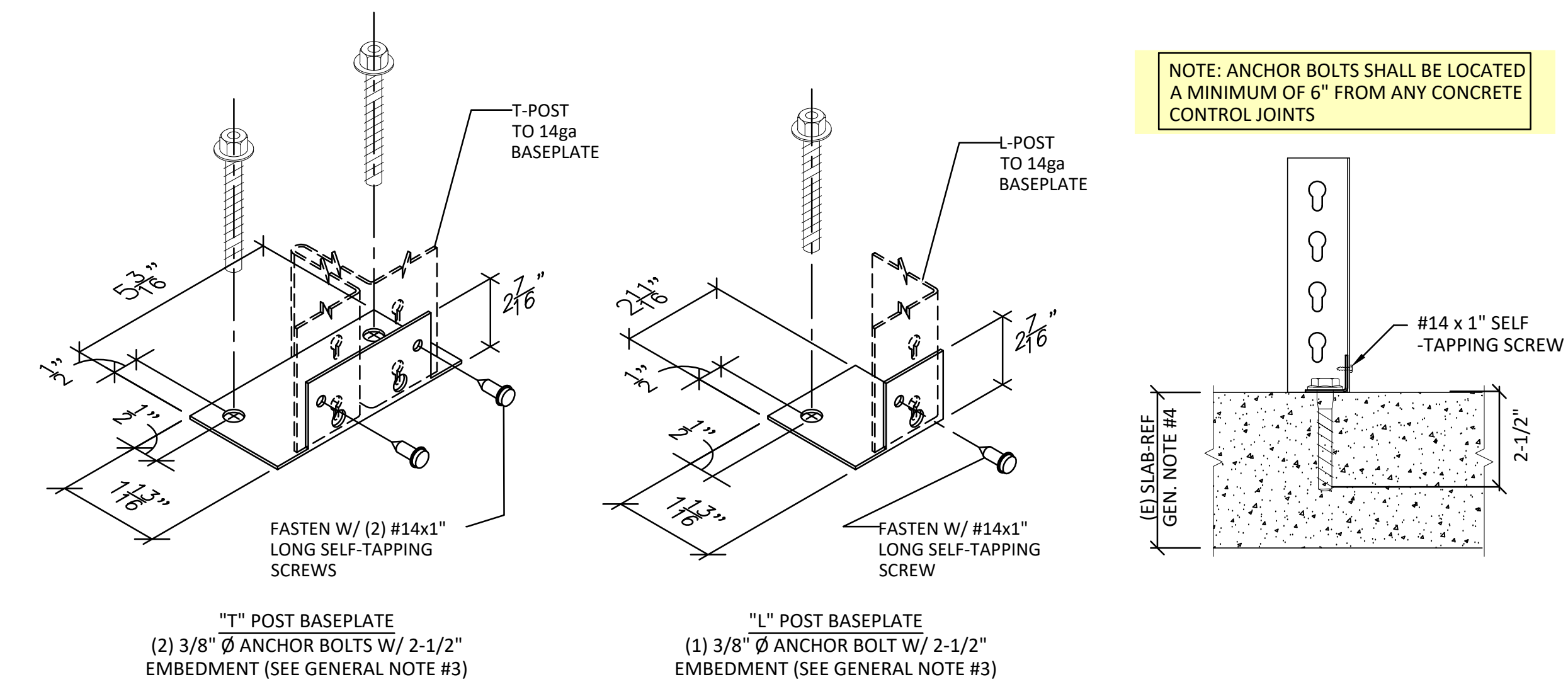


- NOTES:
- CONTRACTOR SHALL FIELD VERIFY MINIMUM SIZE, SPACING, AND GAUGE OF EXISTING WALL STUDS.
 - MINIMUM STEEL WALL STUD SIZE = 362S162-33 (3-5/8"x1-5/8"x20 GAUGE)

4 WALL ATTACHMENT DETAIL



1 UPRIGHT STEEL POSTS



5 BASE PLATE AND SLAB DETAILS

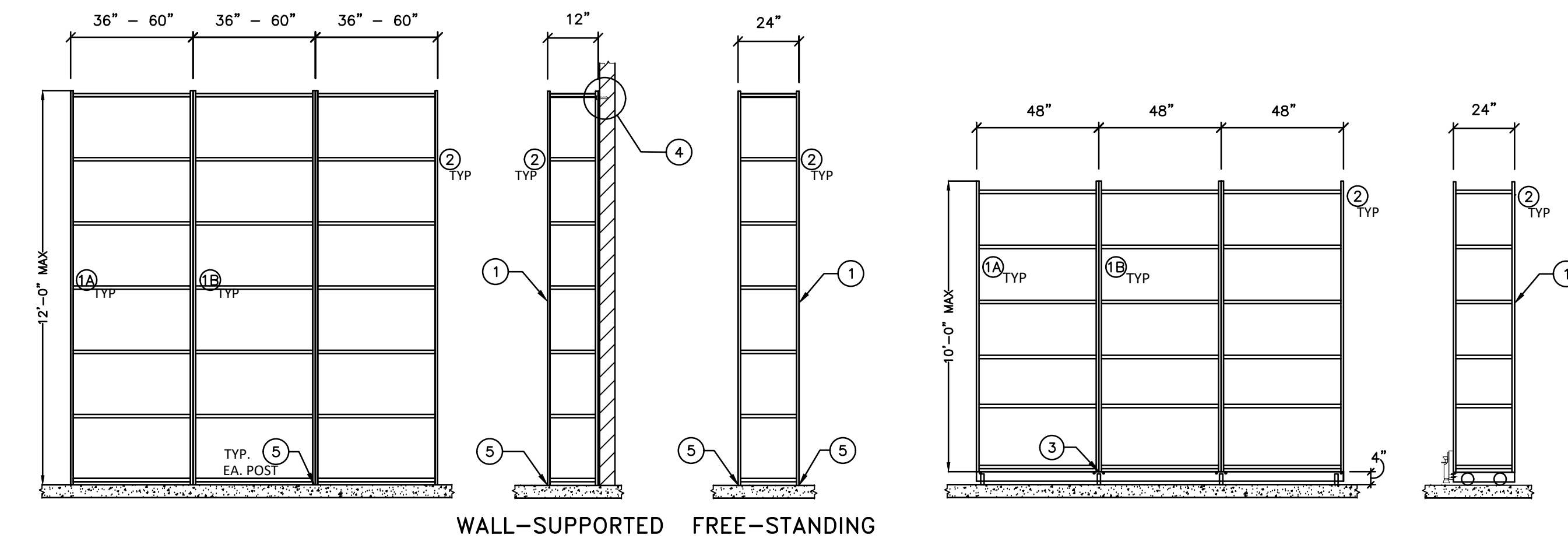
NOTE: FIXED/MOBILE RETAIL SHELVES SHALL BE RESTOCKED BY HAND. DO NOT USE A FORKLIFT OR OTHER MECHANIZED LOADER TO STOCK SHELVES.

REGULARLY INSPECT SHELVING FOR DAMAGE. IF DAMAGE IS FOUND, IMMEDIATELY UNLOAD THE AFFECTED AREA AND REPLACE OR REPAIR ANY DAMAGED COLUMNS, BEAMS, OR OTHER STRUCTURAL COMPONENTS

ENSURE THAT SHELVING IS NOT MODIFIED OR RE-ARRANGED IN A MANNER NOT WITHIN THE ORIGINAL DESIGN CONFIGURATIONS

NOTE: SHELF CONFIGURATION (LENGTH, WIDTH, NUMBER OF SHELVES) VARIES PER UNIT - REF. SHELVING CUT SHEETS AND FIXTURE PLAN - ALL SHELVING TO BE WIRE GRID OR PARTICLE BOARD - THERE SHALL BE NO STORAGE OVER 12'-0" A.F.F. (NON-HIGH PILE)

- BACK TO BACK UNITS, WHERE OCCURS, SHALL BE BOLTED TOGETHER WITH 1/4" Ø GRADE 5 HEX BOLTS AT 36" O.C. (MAX) ALONG THE LENGTH OF THE POST.



FIXED SHELVING

SIDE VIEWS

MOBILE SHELVING

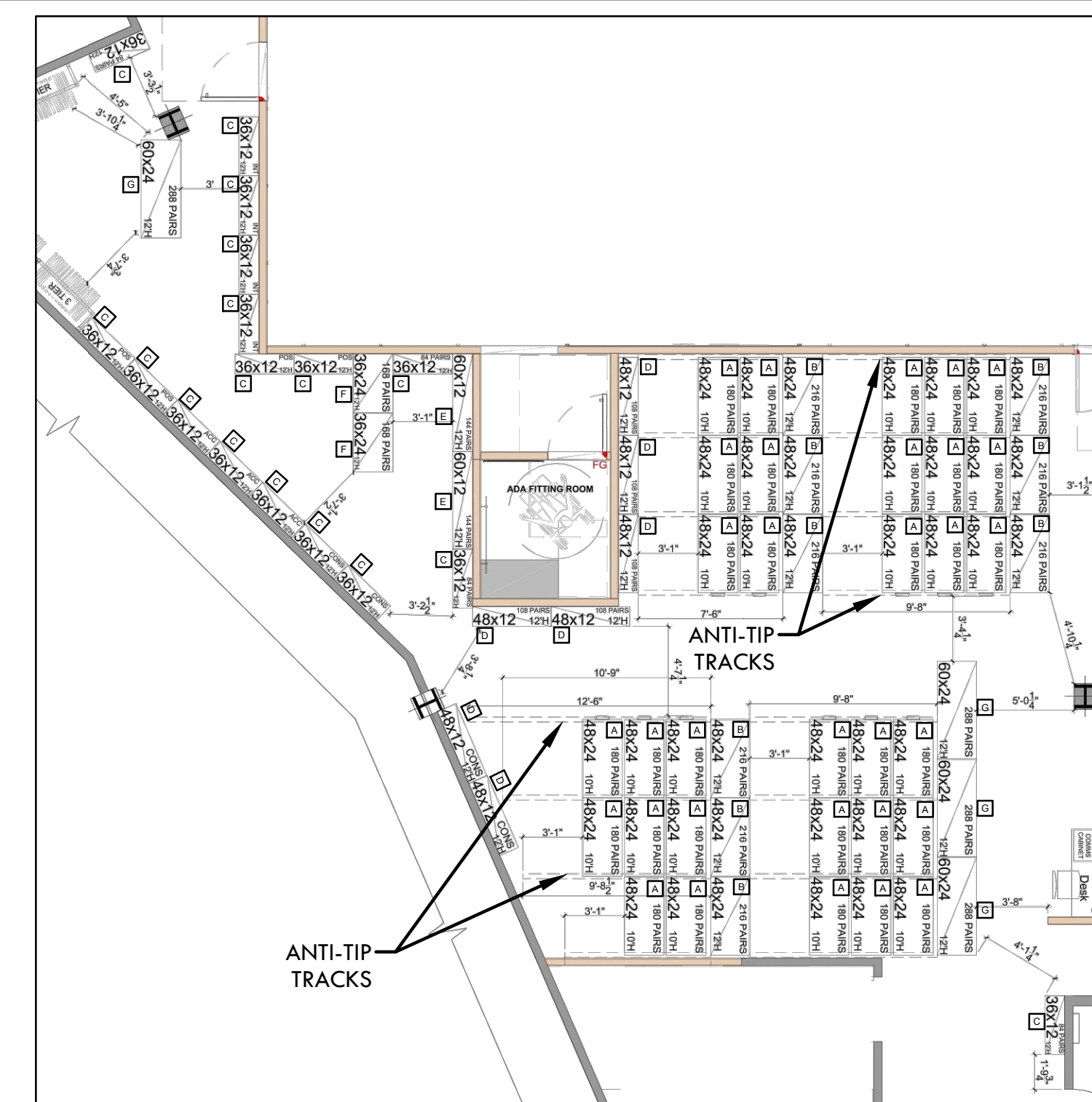
SIDE VIEW

SHELVING UNIT PROPERTIES / QUANTITIES

MARK	NUMBER OF UNITS	TYPE OF UNIT	NUMBER OF SHELVES	PRODUCT LOAD (LBS)	UNIT LENGTH	UNIT DEPTH	UNIT HEIGHT
A	32	MOBILE	6	75	4'-0"	2'-0"	10'-0"
B	9	FREE-STANDING	6	75	4'-0"	2'-0"	10'-0"
C	17	WALL-SUPPORTED	7	75	3'-0"	1'-0"	12'-0"
D	7	WALL-SUPPORTED	7	75	4'-0"	1'-0"	12'-0"
E	2	WALL-SUPPORTED	7	75	5'-0"	1'-0"	12'-0"
F	2	FREE-STANDING	7	75	3'-0"	2'-0"	12'-0"
G	4	FREE-STANDING	7	75	5'-0"	2'-0"	12'-0"

NOTES / SYMBOLS

- STATIC UNIT
- MANUAL MOBILE UNIT

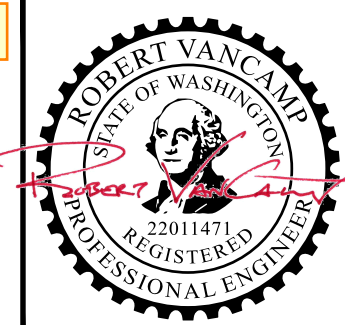


PARTIAL FLOOR PLAN & SHELVING LAYOUT

PRCT120240722

City of Puyallup
Development & Permitting Services
ISSUED PERMIT

Building	Planning
Engineering	Public Works
Fire	Traffic



ECLIPSE ENGINEERING
385 NE QUIMBY AVENUE
BEND, OREGON 97701
ECLIPSE-ENGINEERING.COM
(541) 389-9659

JD SPORTS - STORE #1315
SOUTH HILL MALL - SPACE #530
3500 SOUTH MERIDIAN STREET
PUYALLUP, WASHINGTON 98373

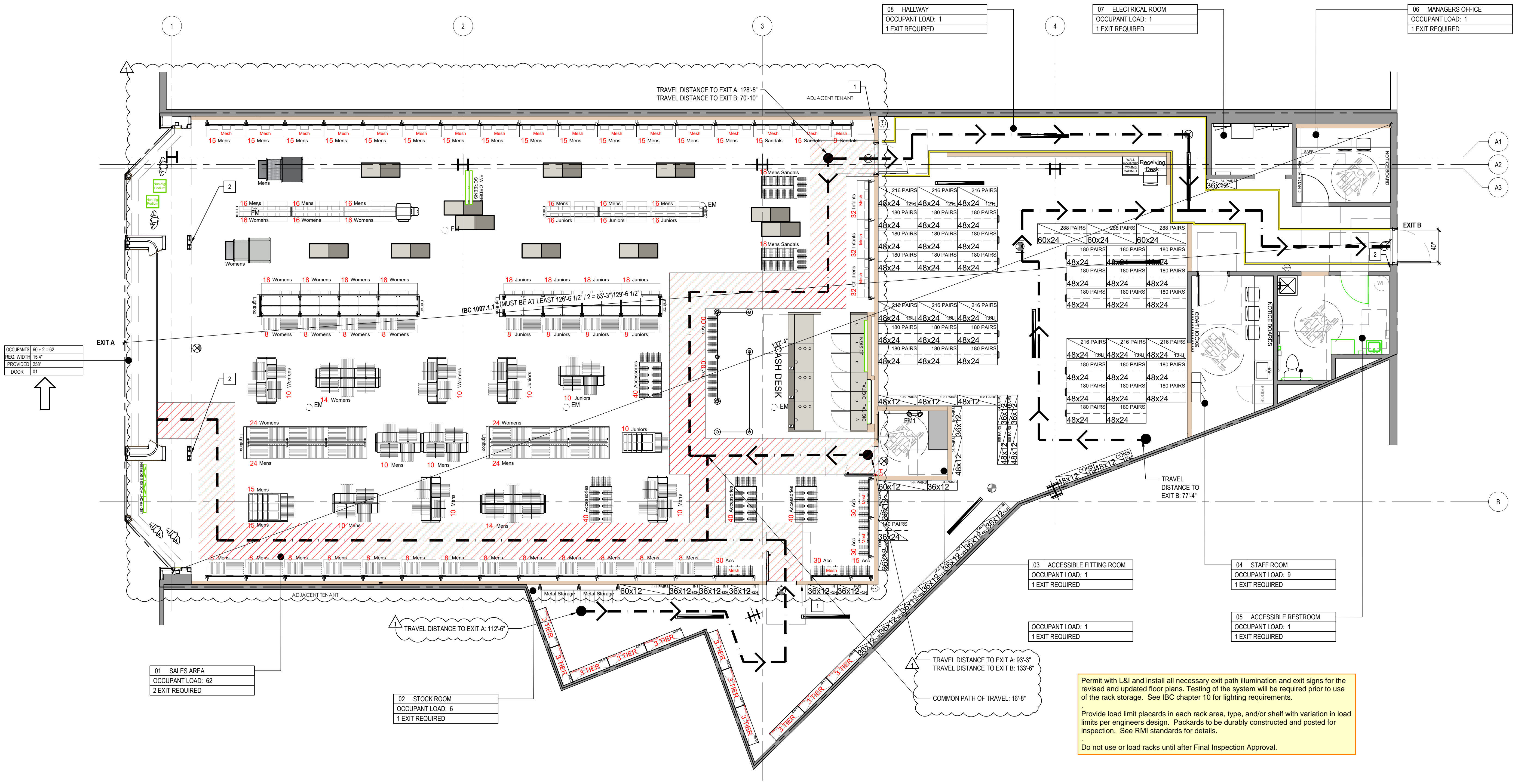
RIVET STYLE STEEL STORAGE SHELVING DETAILS

DRAWN	CHECKED	REVISED	REVISED
RVC	RVA		

ECLIPSE ENGINEERING
CONTACT INFO:
ROBERT VANCAMP, PE
BEND, OREGON
(541) 389-9659

PROJECT #: 23-12-069
DATE: 12-11-2023
SHEET

SH-1



Permit with L&I and install all necessary exit path illumination and exit signs for the revised and updated floor plans. Testing of the system will be required prior to use of the rack storage. See IBC chapter 10 for lighting requirements.
 Provide load limit placards in each rack area, type, and/or shelf with variation in load limits per engineers design. Placards to be durably constructed and posted for inspection. See RMI standards for details.
 Do not use or load racks until after Final Inspection Approval.

18 EGRESS PLAN
 SCALE: 3/16" = 1'-0"

- 1 TACTILE EXIT SIGN TO SAY "EXIT ROUTE" SEE 26/G-111, 27/G-111 & 29/G-111 FOR MORE INFORMATION.
- 2 TACTILE EXIT SIGN TO SAY "EXIT" SEE 26/G-111, 27/G-111 & 29/G-111 FOR MORE INFORMATION.

17 KEY NOTES
 SCALE: NTS

13 EGRESS DATA
 SCALE: NTS

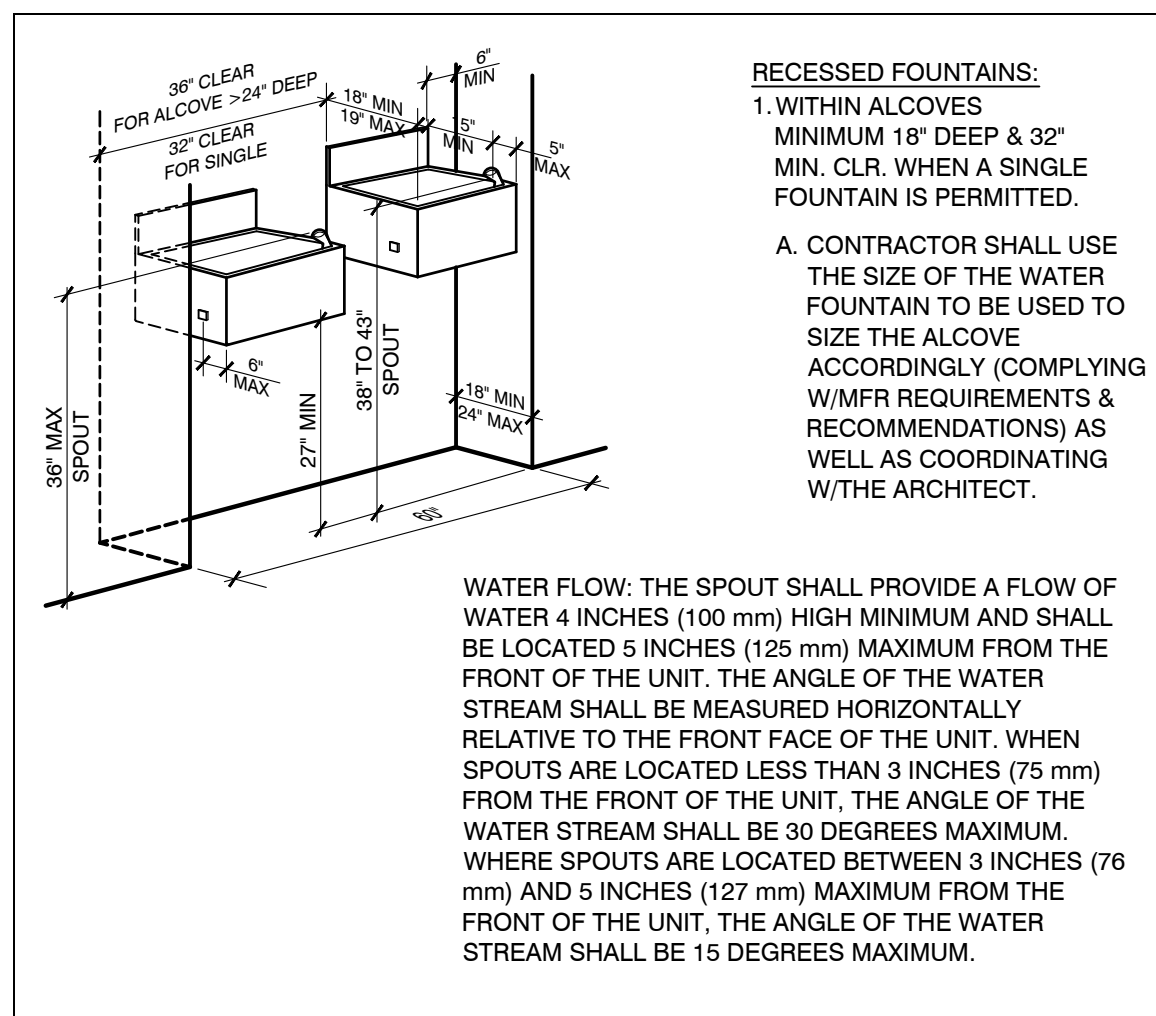
FLOOR	USE	TOTAL S.F.	OCCUPANT LOAD FACTOR (GROSS)	OCCUPANT LOAD
GROUND FLOOR	SALES AREA (GROSS)	3867	60	62
	FITTING ROOMS (GROSS)	85	60	2
	HALLWAYS/CORRIDORS (GROSS)	219	300	1
	RESTROOMS (GROSS)	106	1 PER	1
	STOCK ROOM (GROSS)	1866	300	7
	MANAGER'S OFFICE (GROSS)	77	150	1
	STAFF ROOM (GROSS)	126	15	9
ELECTRICAL ROOM (GROSS)	43	300	1	
GROSS LEASABLE SPACE PERIMETER		6148.00		83

DESCRIPTION	REQUIREMENT	PROPOSED
MIN. # OF EXITS PER OCCUPANT	2	2
MAX TRAVEL DISTANCE	250'-0" WITH SPRINKLER SYSTEM	140'-10" (REFER TO EGRESS PLAN)
CORRIDOR WIDTH	44" MIN	44"
MIN. EGRESS WIDTH	83 OCC x 0.2 = 16.6"	16"
COMMON PATH OF TRAVEL DISTANCE	75'-0" MAX.	16'-8"

9 EGRESS DATA
 SCALE: NTS

SYMBOL	DESCRIPTION
	PATH OF TRAVEL
	44" CLEAR PATH OF TRAVEL
	ILLUMINATED EXIT SIGN WITH 6" HIGH LETTERS AND LISTED/LABELLED IN ACCORDANCE WITH UL 924. REFER TO ELECTRICAL DRAWINGS
	FIRE EXTINGUISHER, TYPE 2A10BC. COORDINATE FINAL LOCATIONS AND QUANTITIES WITH LOCAL FIRE MARSHAL.
	EMERGENCY LIGHTING

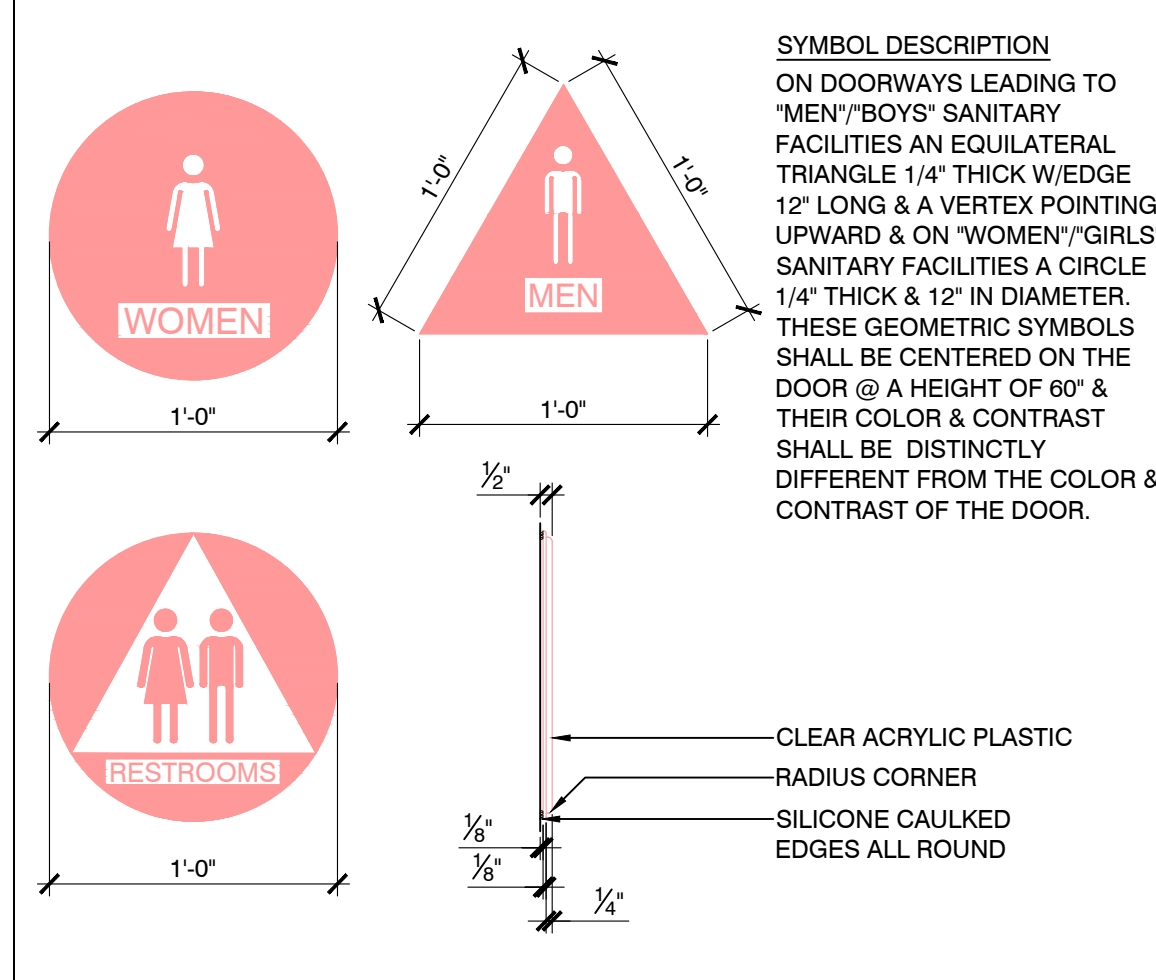
1 SYMBOLS LEGEND
 SCALE: NTS



RECESSED FOUNTAINS:
 1. WITHIN ALCOVES MINIMUM 18" DEEP & 32" MIN. CLR. WHEN A SINGLE FOUNTAIN IS PERMITTED.
 A. CONTRACTOR SHALL USE THE SIZE OF THE WATER FOUNTAIN TO BE USED TO SIZE THE ALCOVE ACCORDINGLY (COMPLYING W/MFR REQUIREMENTS & RECOMMENDATIONS) AS WELL AS COORDINATING WITH ARCHITECT.

WATER FLOW: THE SPOUT SHALL PROVIDE A FLOW OF WATER 4 INCHES (100 mm) HIGH MINIMUM AND SHALL BE LOCATED 3 INCHES (75 mm) MAXIMUM FROM THE FRONT OF THE UNIT. THE ANGLE OF THE WATER STREAM SHALL BE MEASURED HORIZONTALLY RELATIVE TO THE FRONT FACE OF THE UNIT. WHEN SPOUTS ARE LOCATED LESS THAN 3 INCHES (75 mm) FROM THE FRONT OF THE UNIT, THE ANGLE OF THE WATER STREAM SHALL BE 30 DEGREES MAXIMUM. WHERE SPOUTS ARE LOCATED BETWEEN 3 INCHES (75 mm) AND 5 INCHES (127 mm) MAXIMUM FROM THE FRONT OF THE UNIT, THE ANGLE OF THE WATER STREAM SHALL BE 15 DEGREES MAXIMUM.

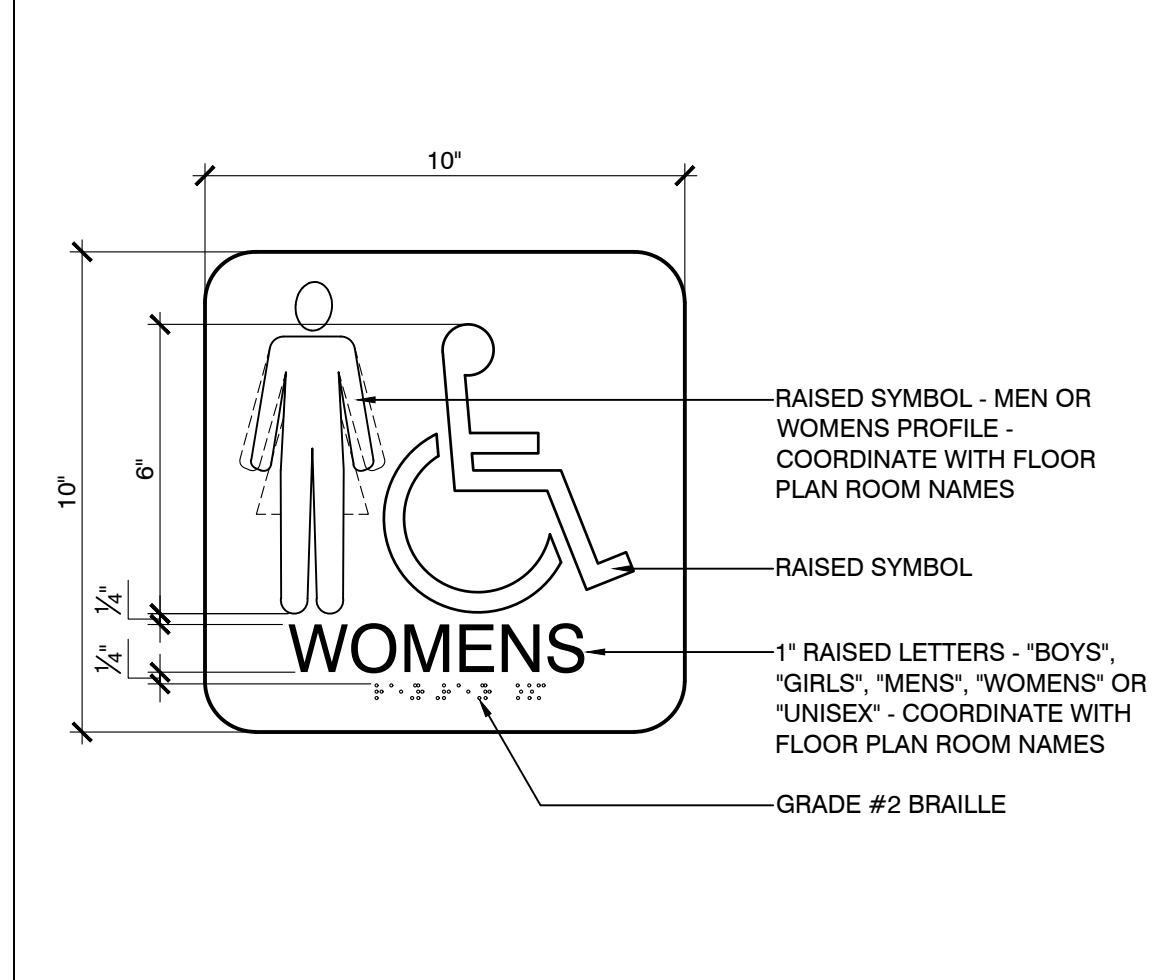
DRINKING FOUNTAIN	SCALE	30
RECESSED FOUNTAIN REQUIREMENTS - TYP.	1/2" = 1'-0"	



SYMBOL DESCRIPTION
 ON DOORWAYS LEADING TO "MEN"/"BOYS" SANITARY FACILITIES AN EQUILATERAL TRIANGLE 1/4" THICK WEDGE 12" LONG & A VERTEX POINTING UPWARD & ON "WOMEN"/"GIRLS" SANITARY FACILITIES A CIRCLE 1/4" THICK & 12" IN DIAMETER. THESE GEOMETRIC SYMBOLS SHALL BE CENTERED ON THE DOOR @ A HEIGHT OF 60" & THEIR COLOR & CONTRAST SHALL BE DISTINCTLY DIFFERENT FROM THE COLOR & CONTRAST OF THE DOOR.

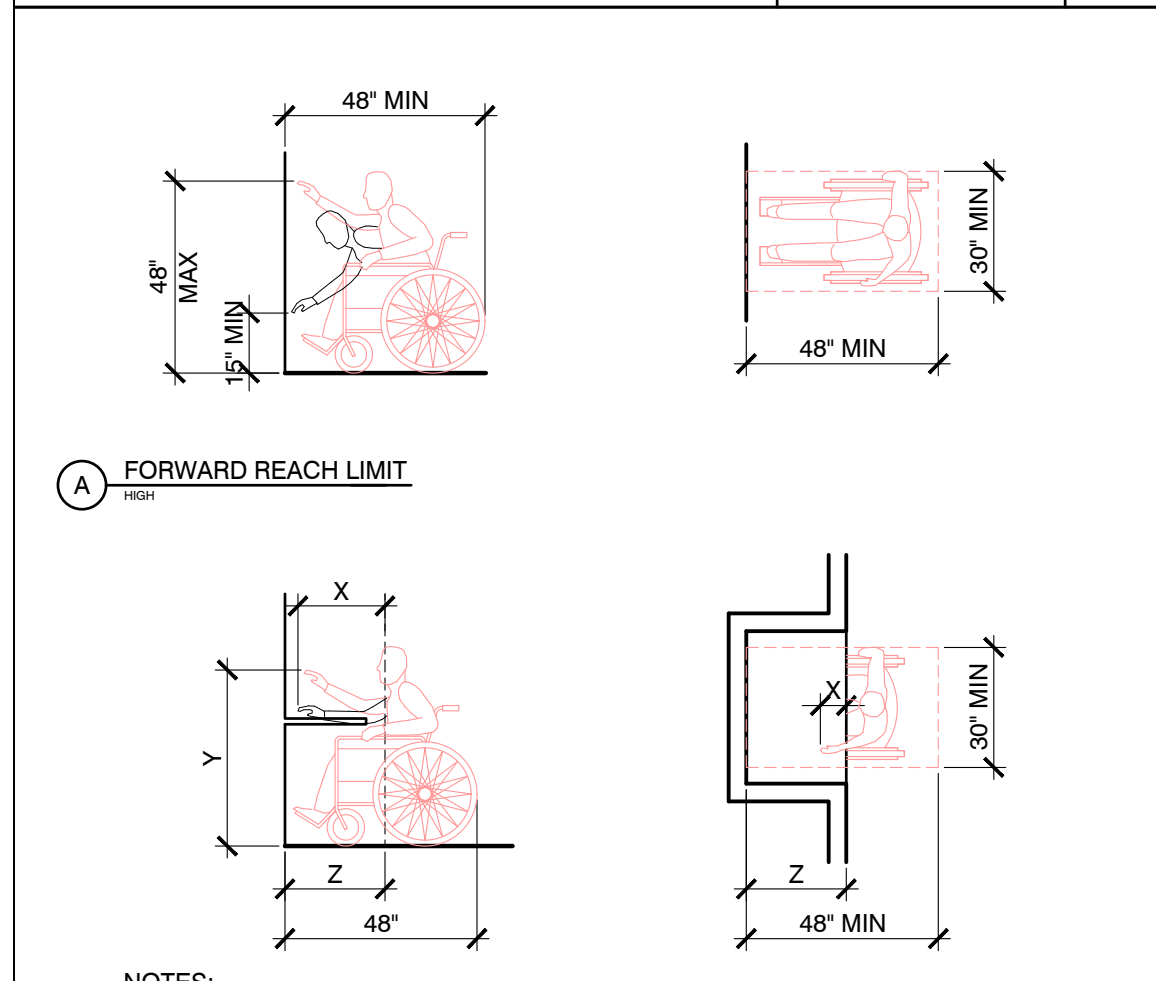
CLEAR ACRYLIC PLASTIC
 RADIUS CORNER
 SILICONE CALULATED EDGES ALL ROUND

ACCES. SANITARY FACILITIES	SCALE	29
RESTROOM SIGNAGE	1-1/2" = 1'-0"	

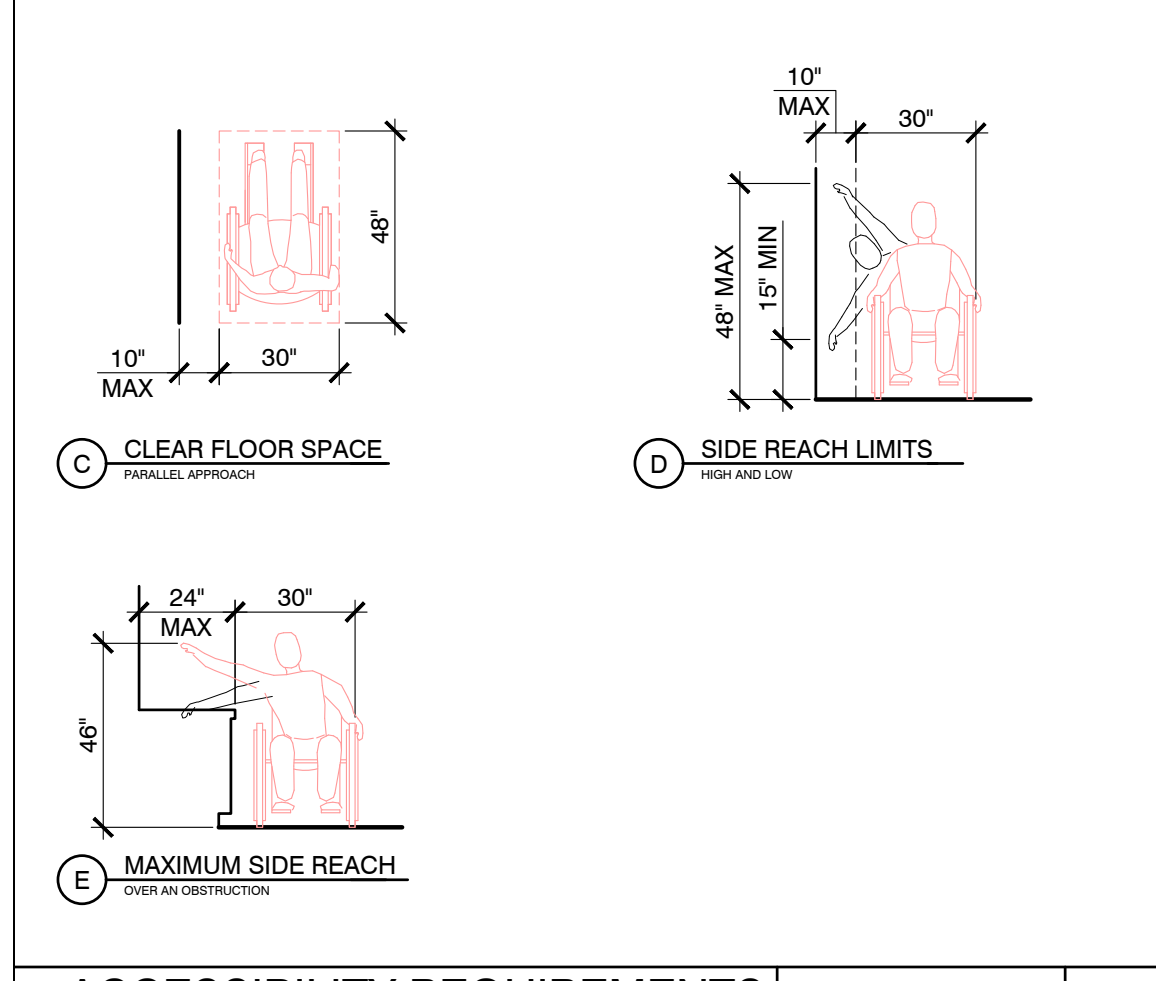


RAISED SYMBOL - MEN OR WOMENS PROFILE
 COORDINATE WITH FLOOR PLAN ROOM NAMES
 RAISED SYMBOL
 1" RAISED LETTERS - "BOYS", "GIRLS", "MENS", "WOMENS" OR "UNISEX" - COORDINATE WITH FLOOR PLAN ROOM NAMES
 GRADE 2 BRAILLE

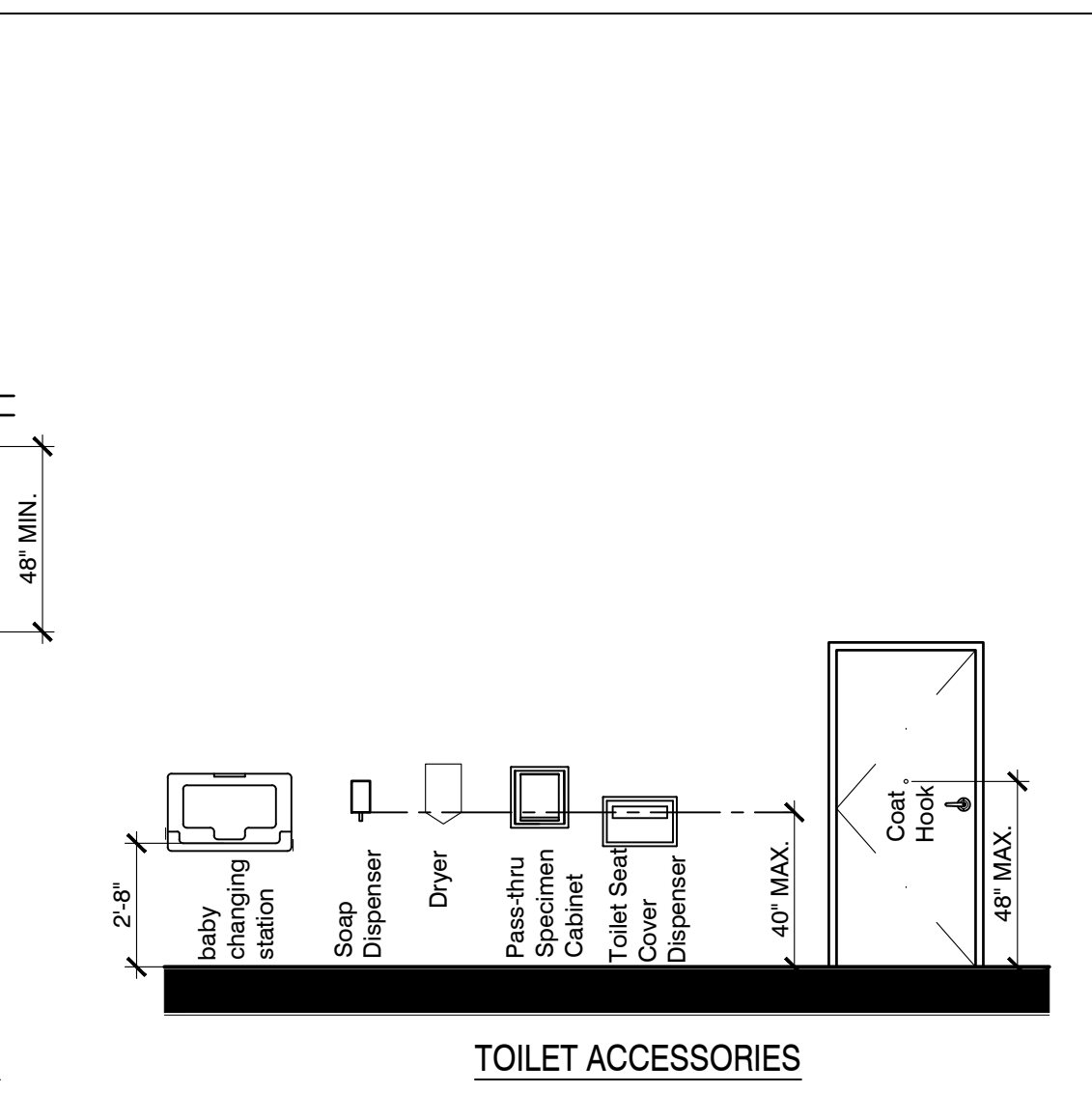
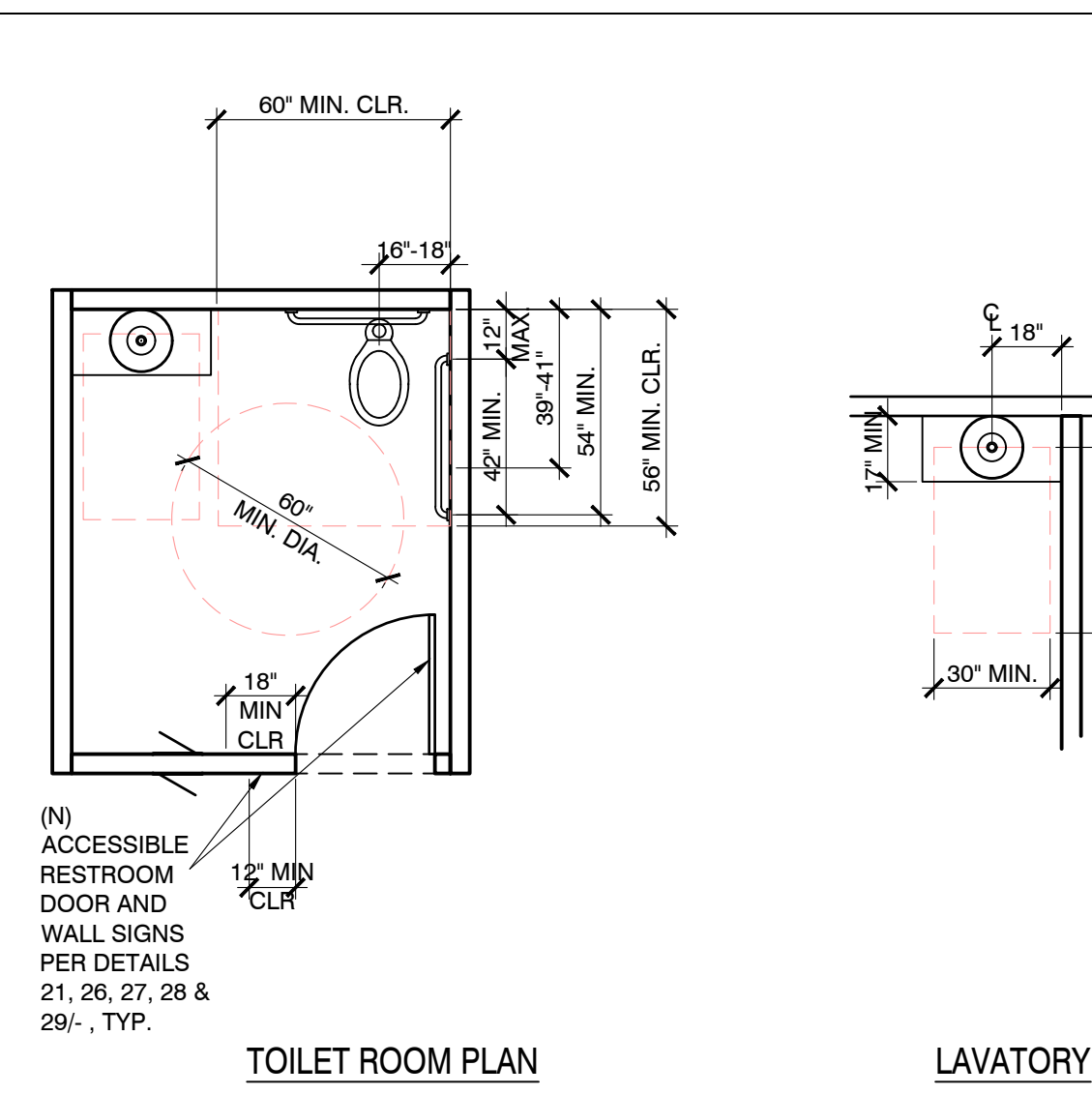
ACCES. SANITARY FACILITIES	SCALE	28
RESTROOM SIGNAGE	3" = 1'-0"	



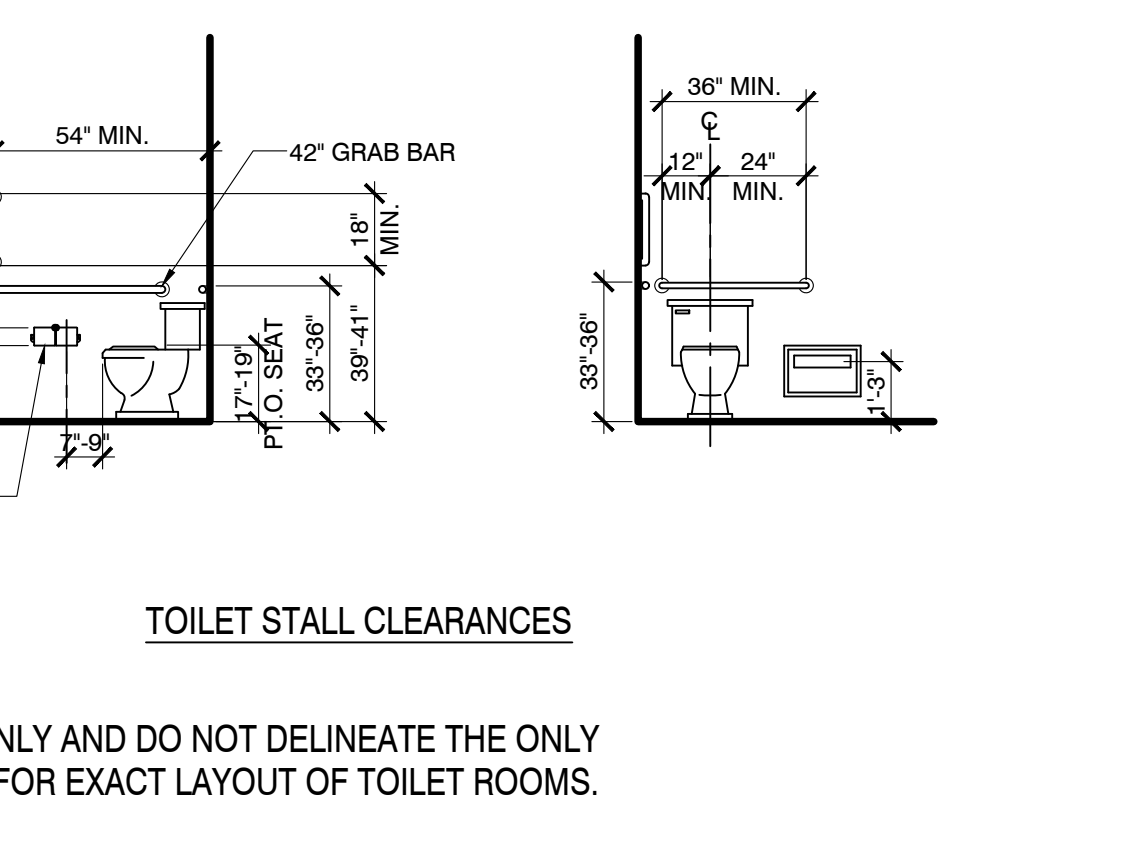
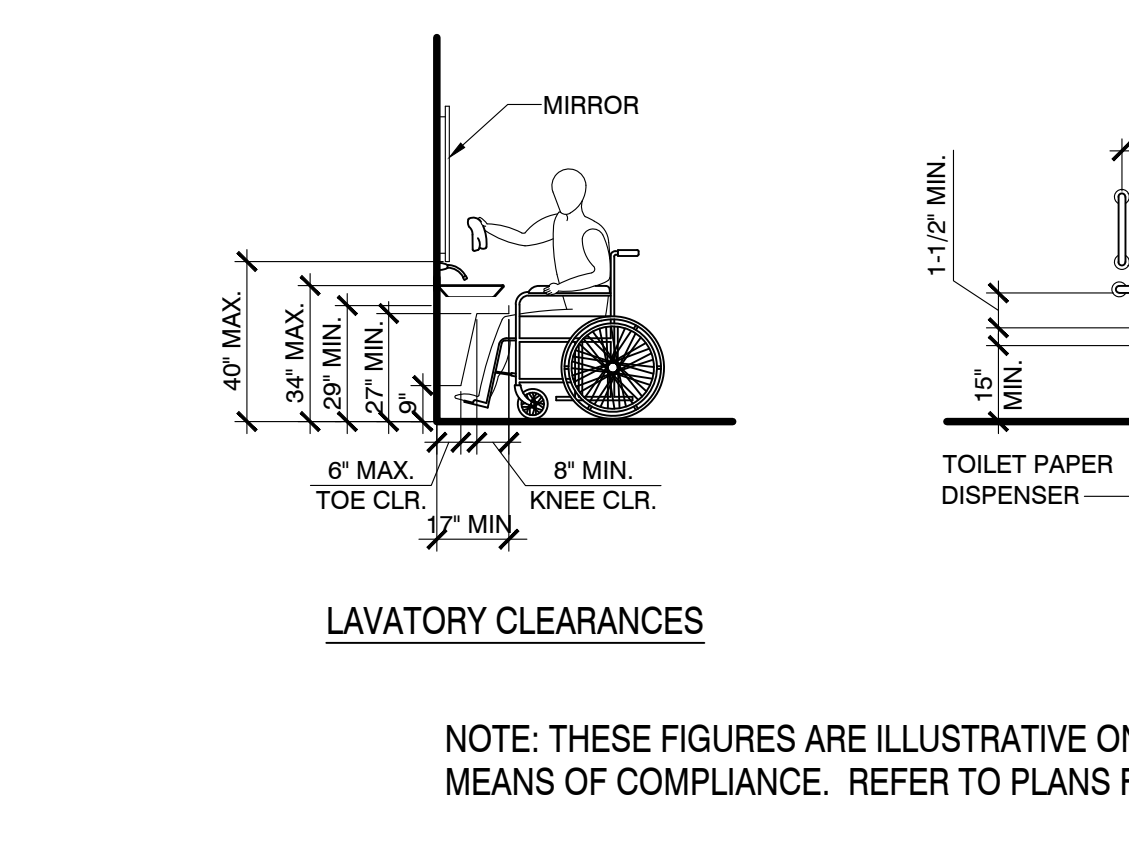
NOTES:
 1. X SHALL BE ≤ 25 INCHES. Z SHALL BE / X
 2. WHEN X < 20 INCHES, THEN Y SHALL BE 44 INCHES MAXIMUM
 3. WHEN X IS 20 TO 25 INCHES, THEN Y SHALL BE 44 INCHES MAXIMUM



ACCESSIBILITY REQUIREMENTS	SCALE	26
REACH RANGES	1/4" = 1'-0"	

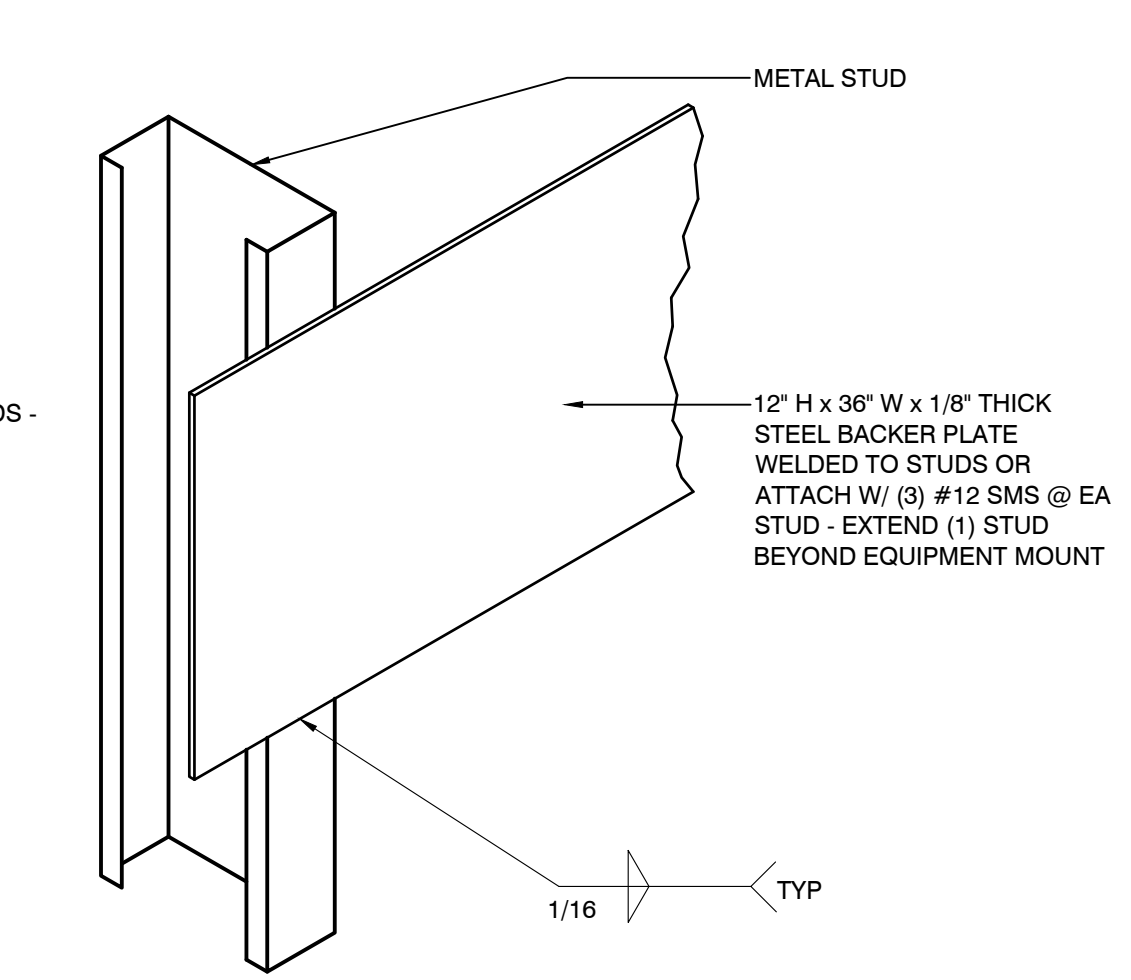
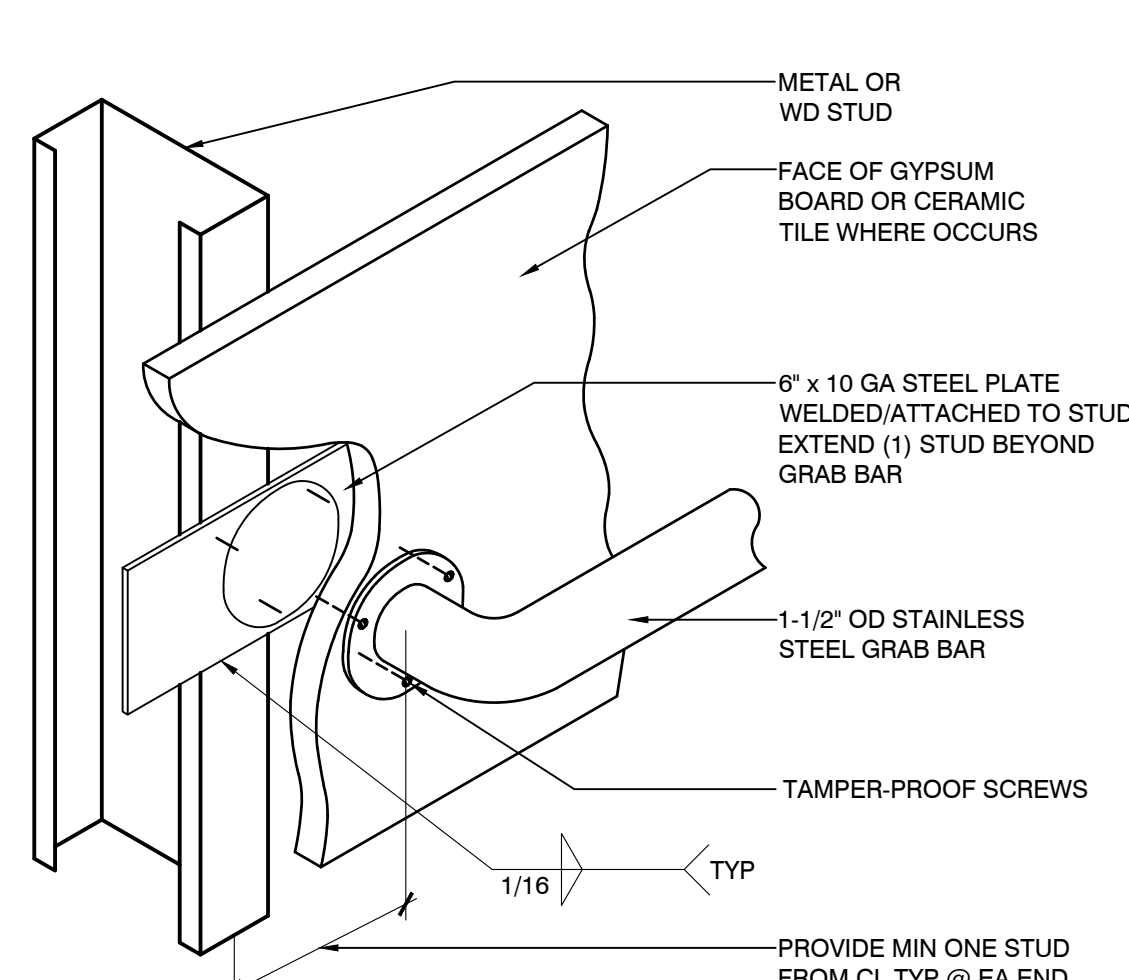


TOILET ROOM PLAN	SCALE	19
TOILET ROOM REQUIREMENTS	1/4" = 1'-0"	

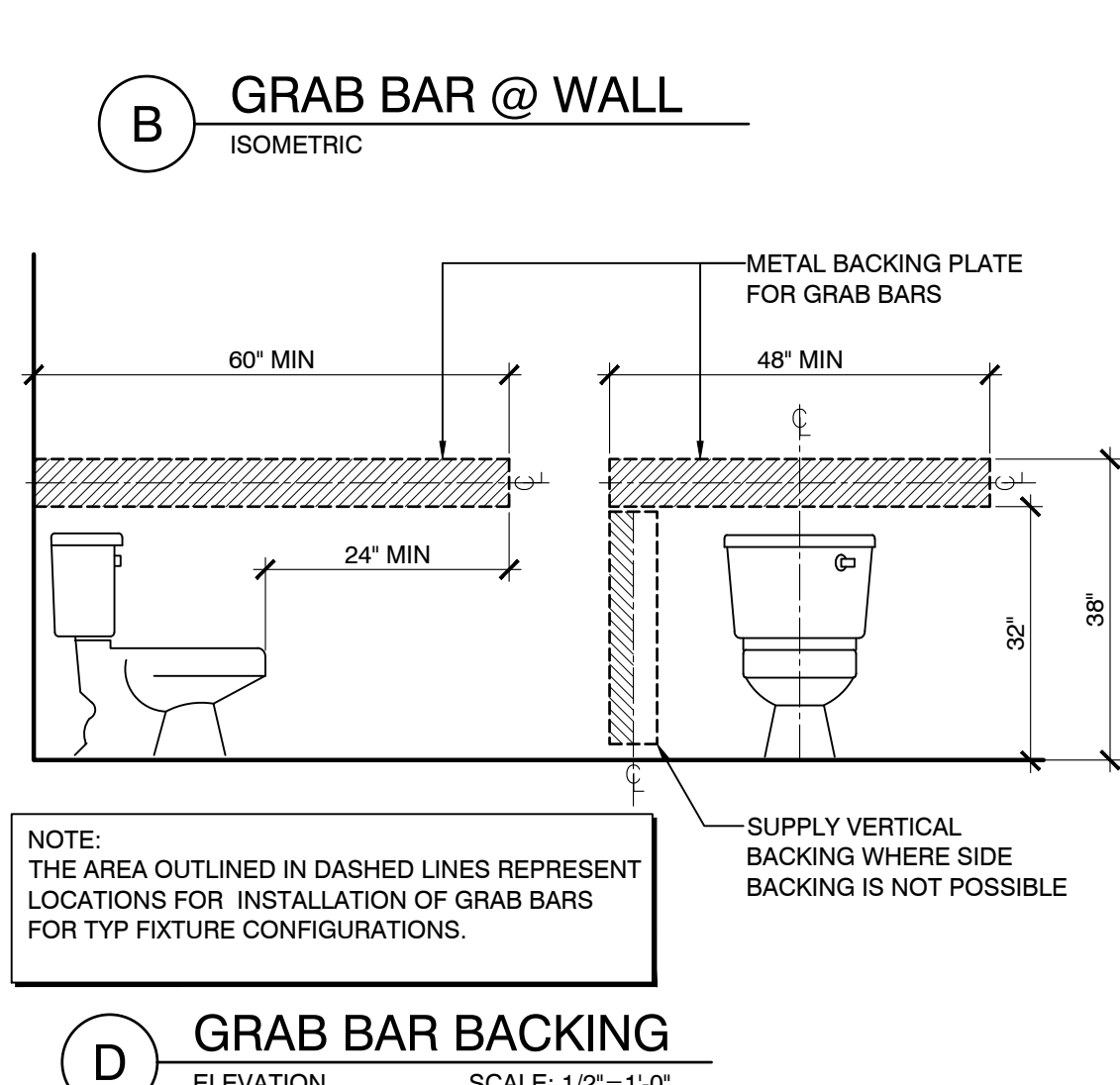
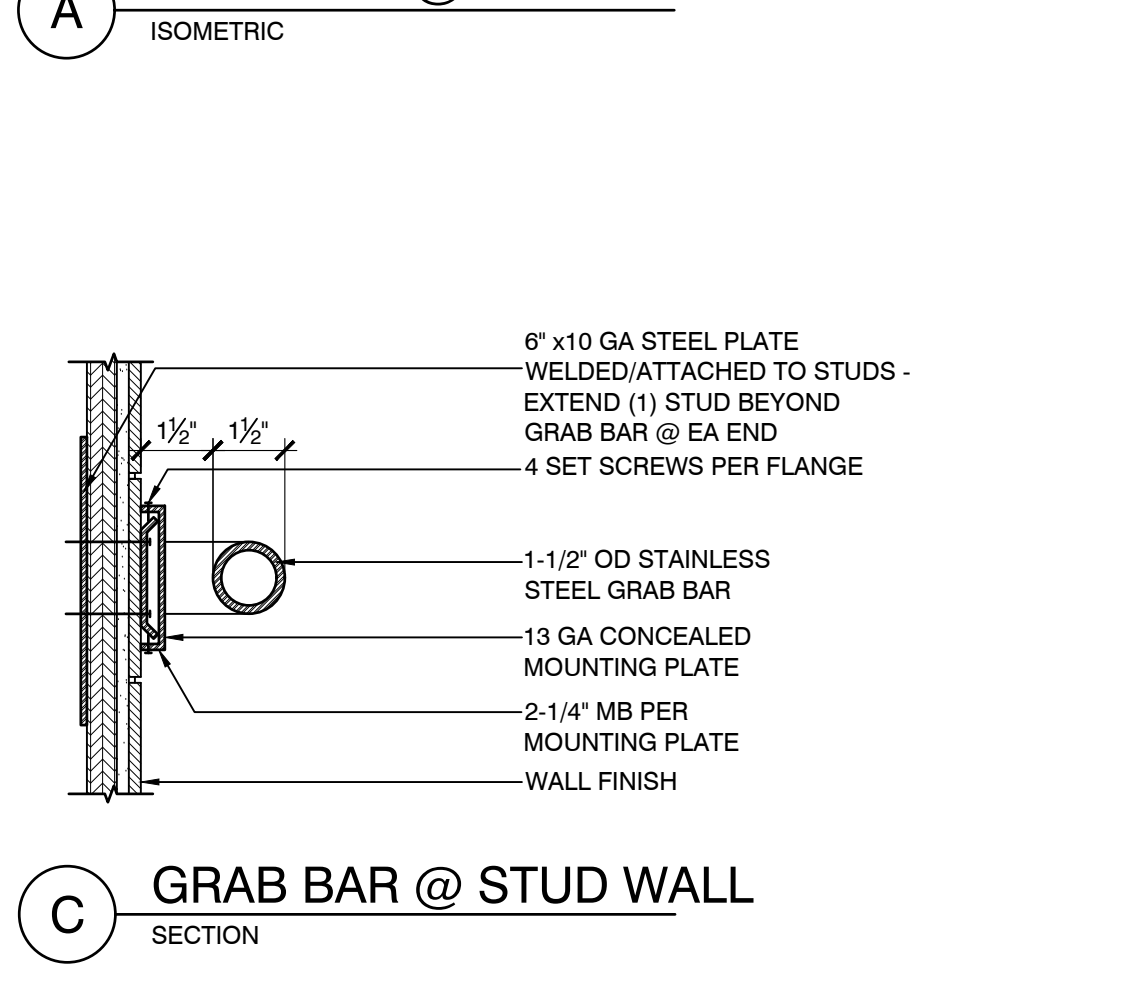


GENERAL NOTE: FOR GRAB BAR MOUNTING SEE DETAIL 16, 22 & 30/- FOR MORE INFO.
 NOTE: THESE FIGURES ARE ILLUSTRATIVE ONLY AND DO NOT DELINEATE THE ONLY MEANS OF COMPLIANCE. REFER TO PLANS FOR EXACT LAYOUT OF TOILET ROOMS.

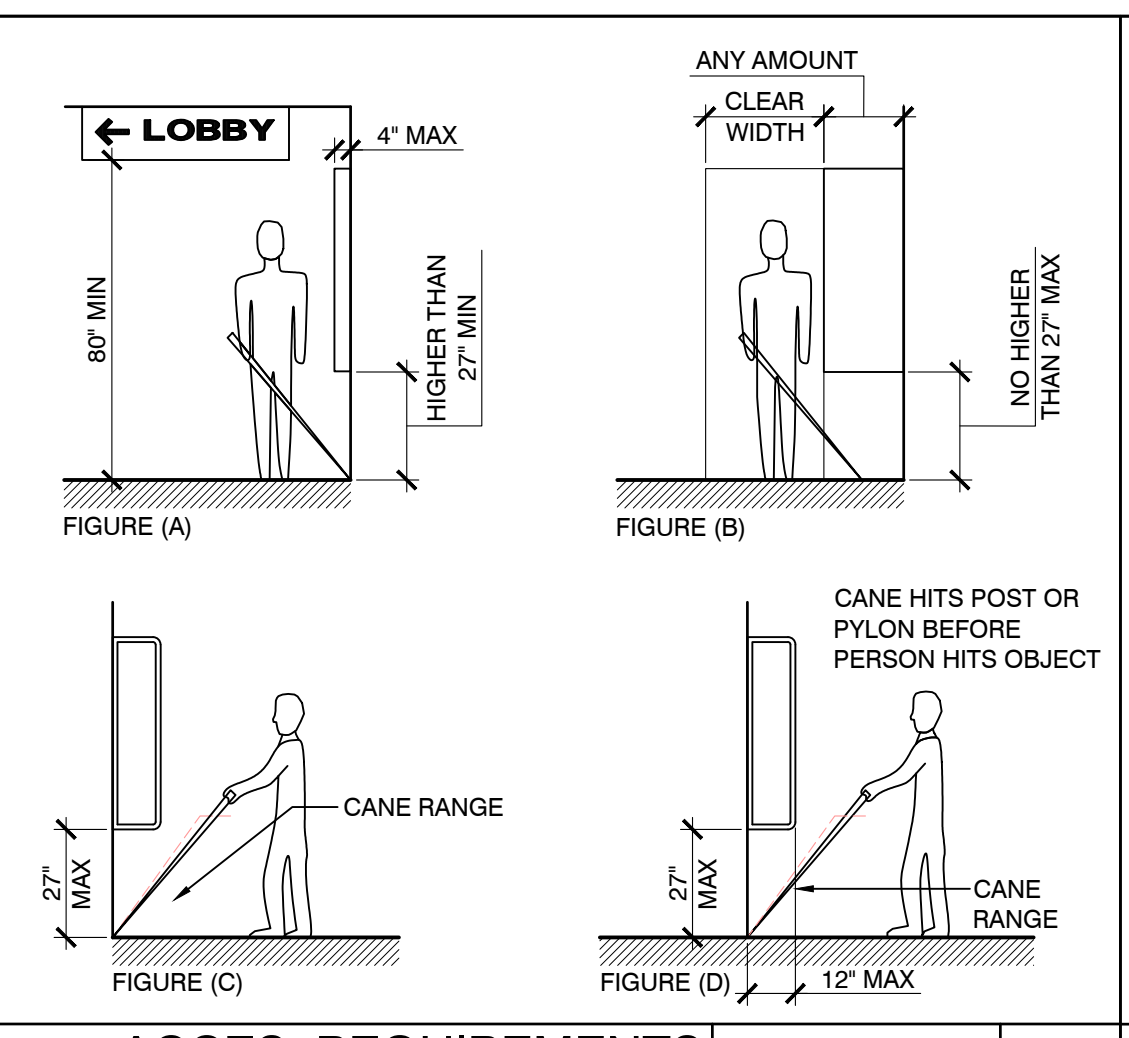
TOILET ROOM REQUIREMENTS	SCALE	19
DETAIL	1/4" = 1'-0"	



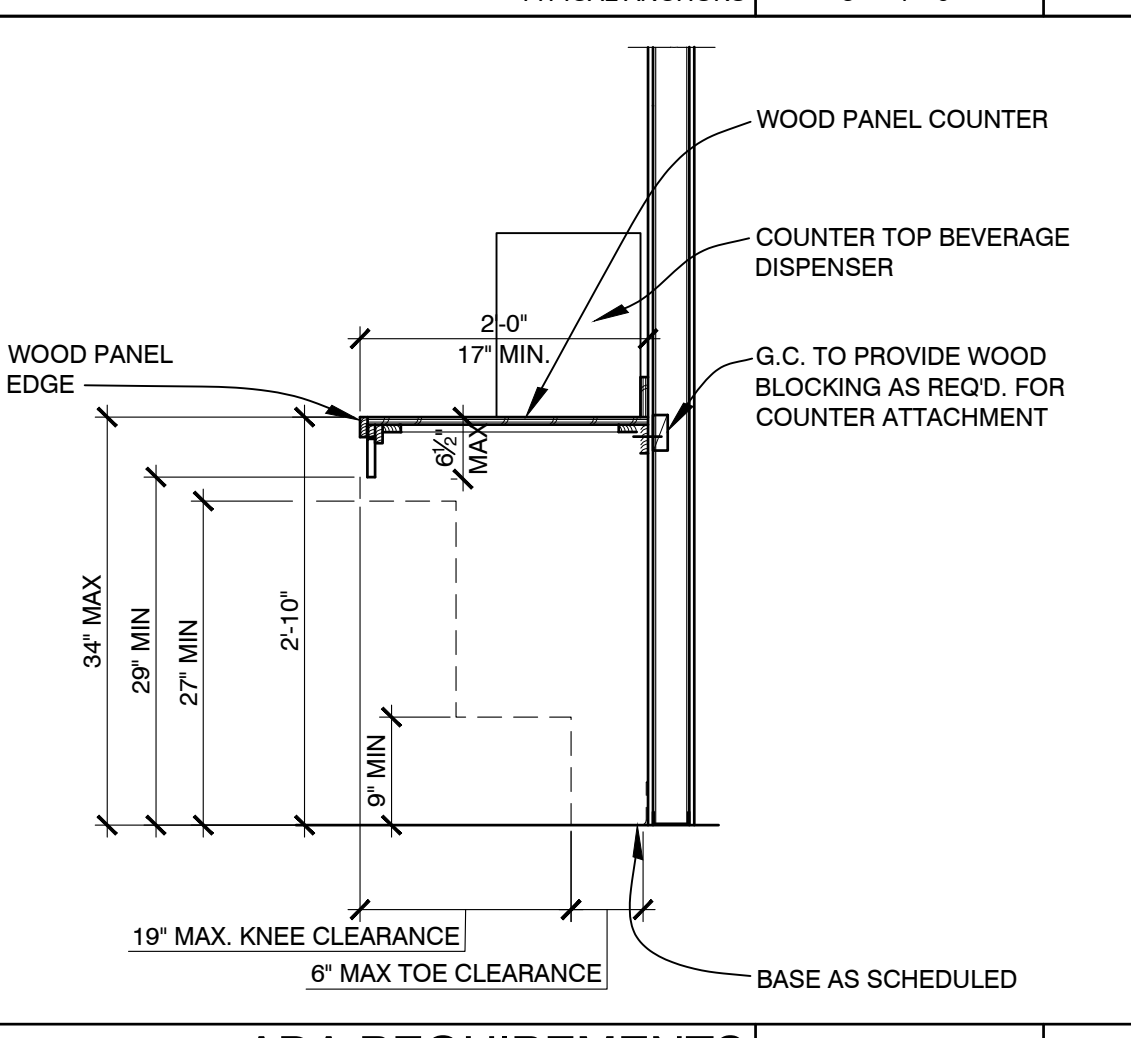
GRAB BAR @ WALL	SCALE	17
TYPICAL ANCHORS	3" = 1'-0"	



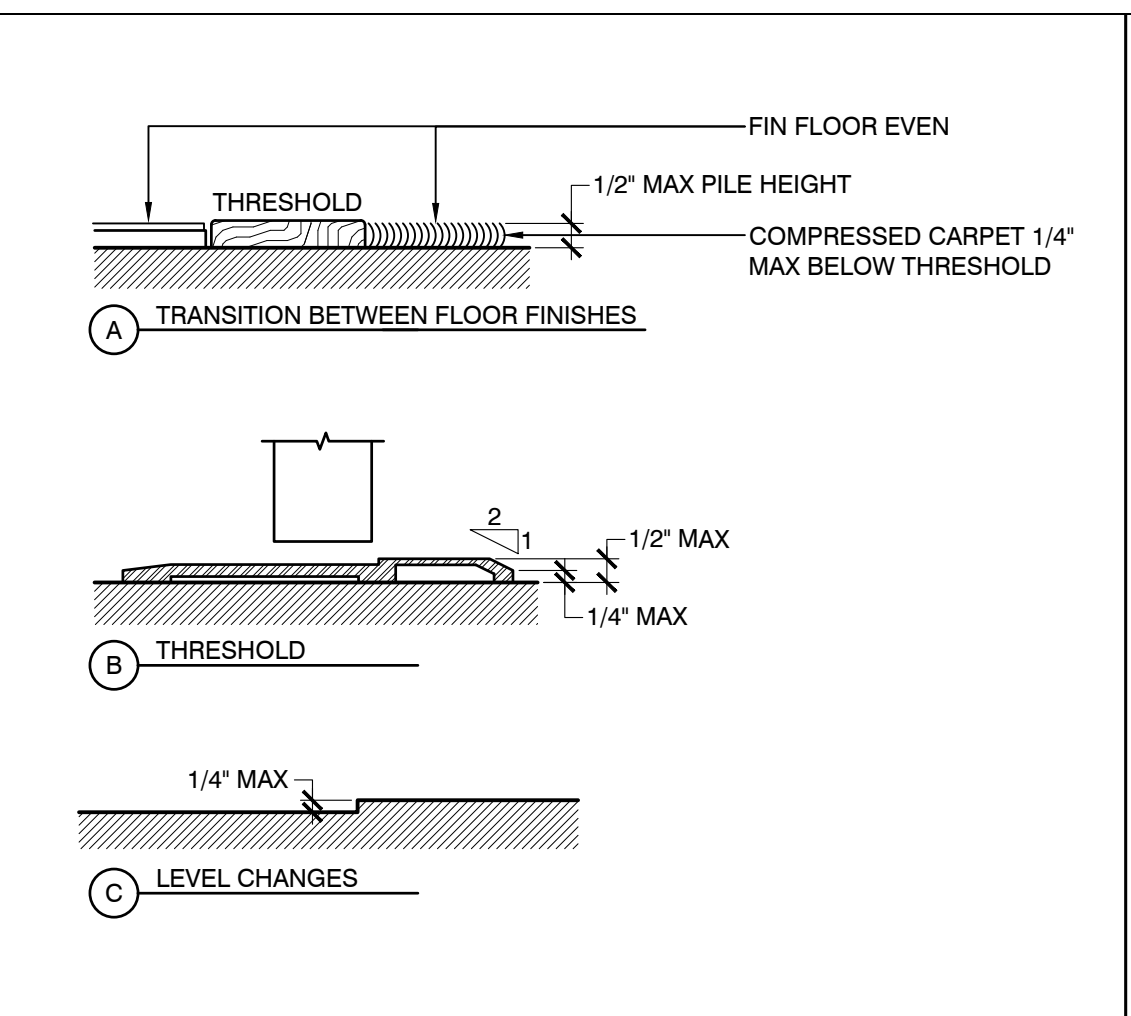
GRAB BAR	SCALE	17
TYPICAL ANCHORS	3" = 1'-0"	



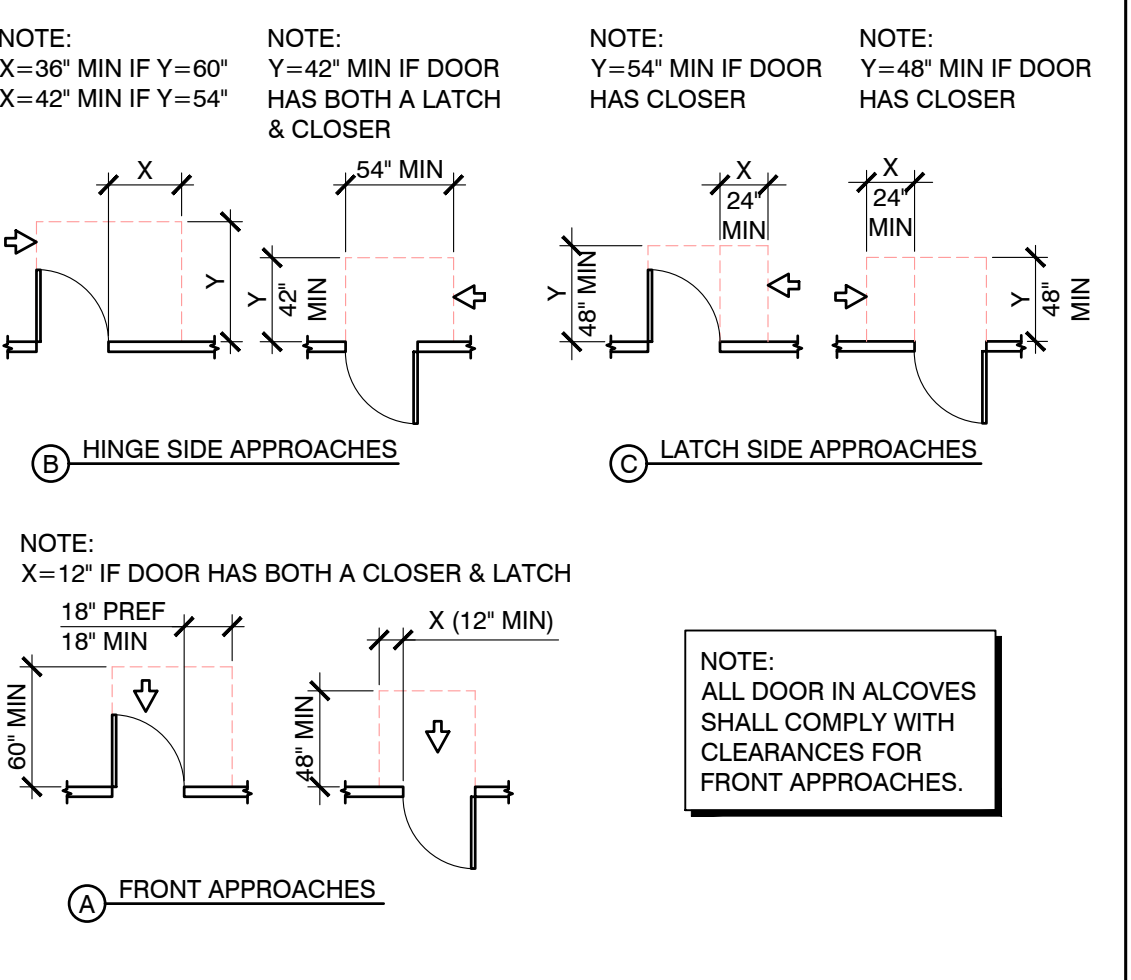
ACCES. REQUIREMENTS	SCALE	21
PROTRUDING OBJECTS	1/4" = 1'-0"	



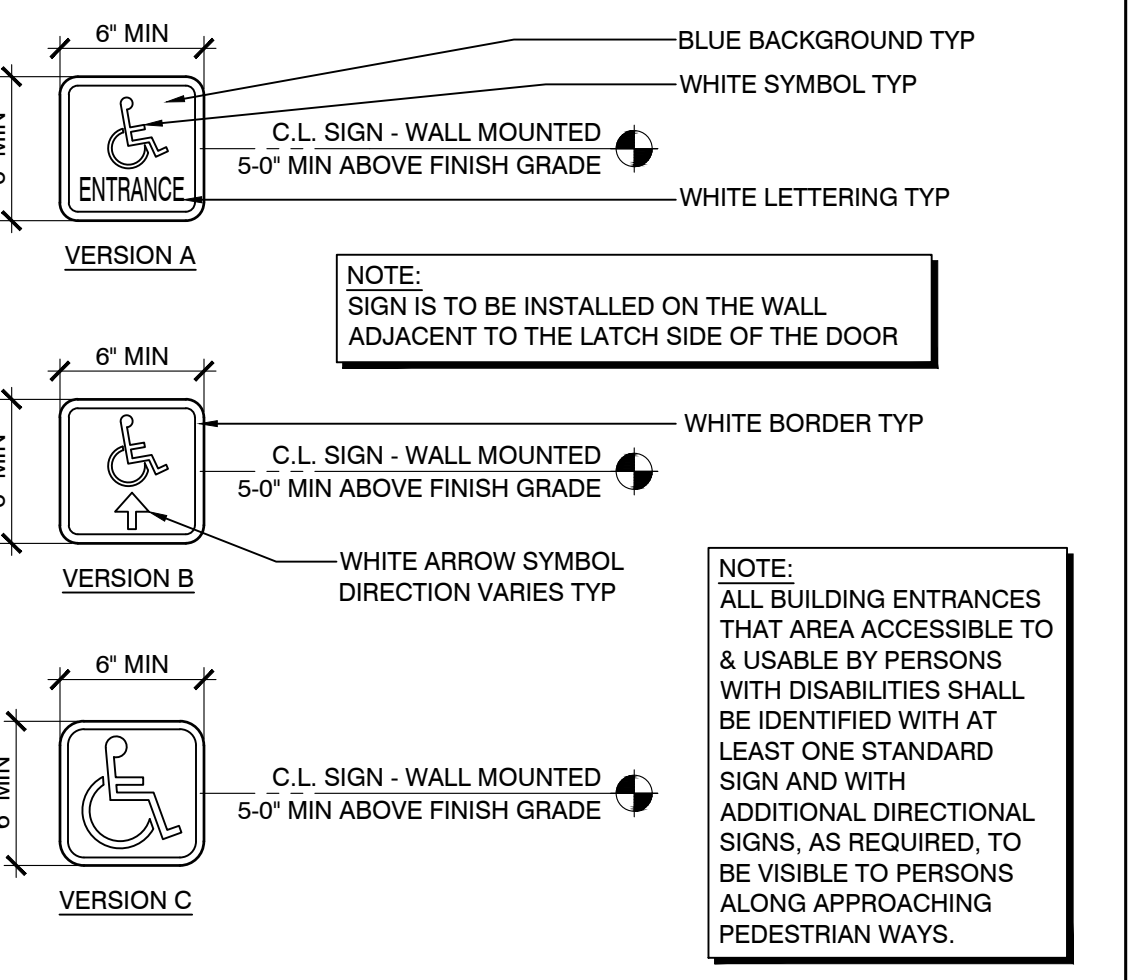
ADA REQUIREMENTS	SCALE	16
BEVERAGE COUNTER	3/4" = 1'-0"	



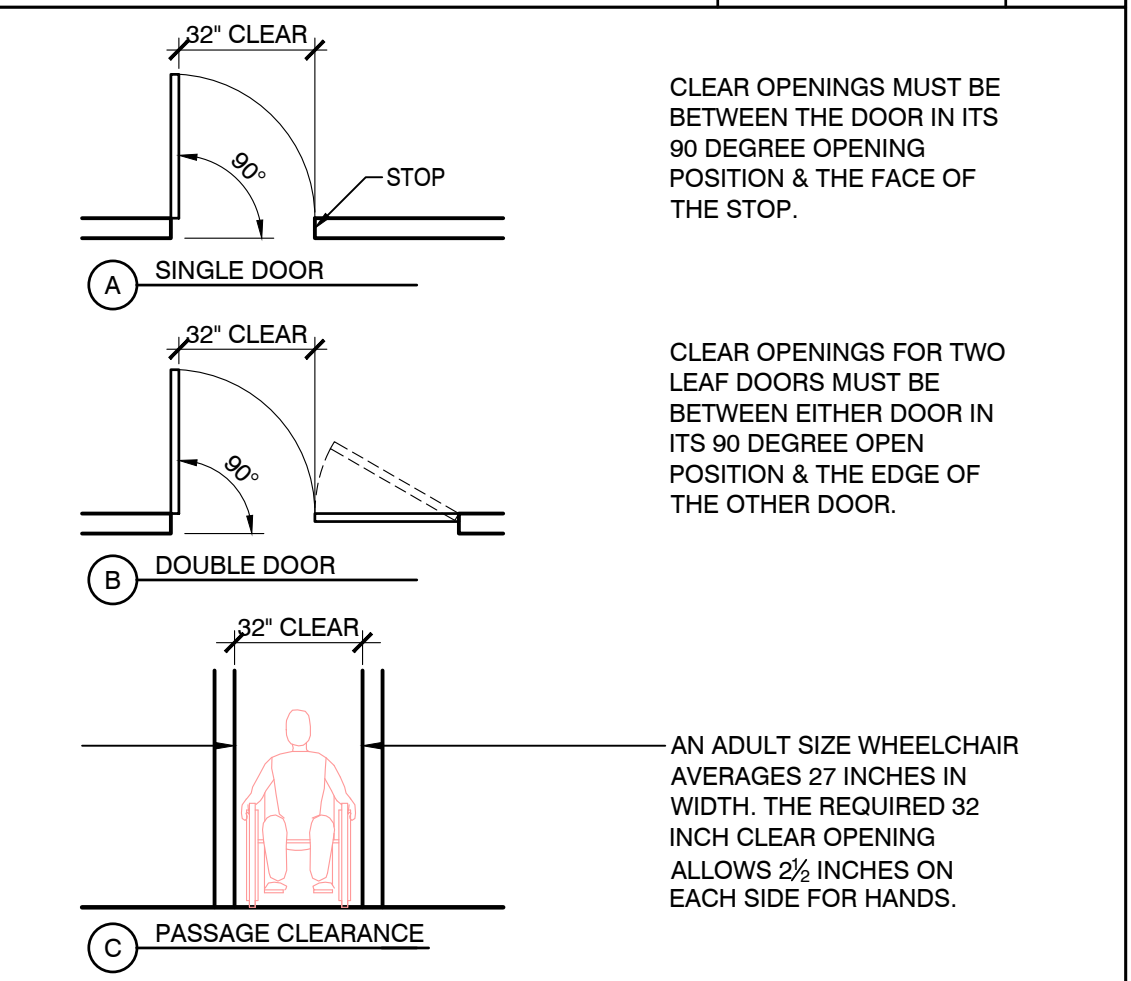
THRESHOLD REQUIREMENTS	SCALE	15
DETAIL	3" = 1'-0"	



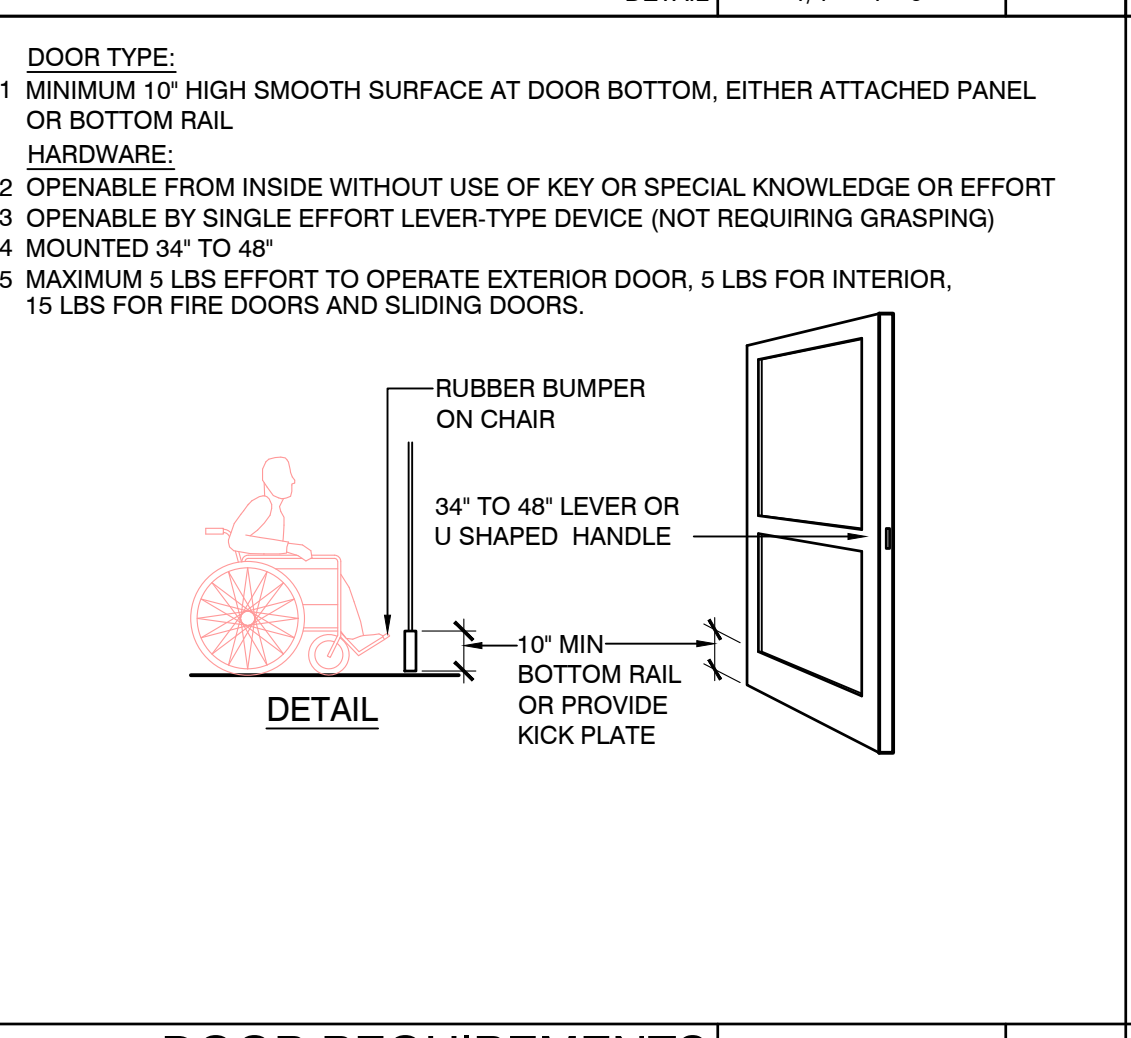
DOOR APPROACHES	SCALE	14
DETAIL	1/8" = 1'-0"	



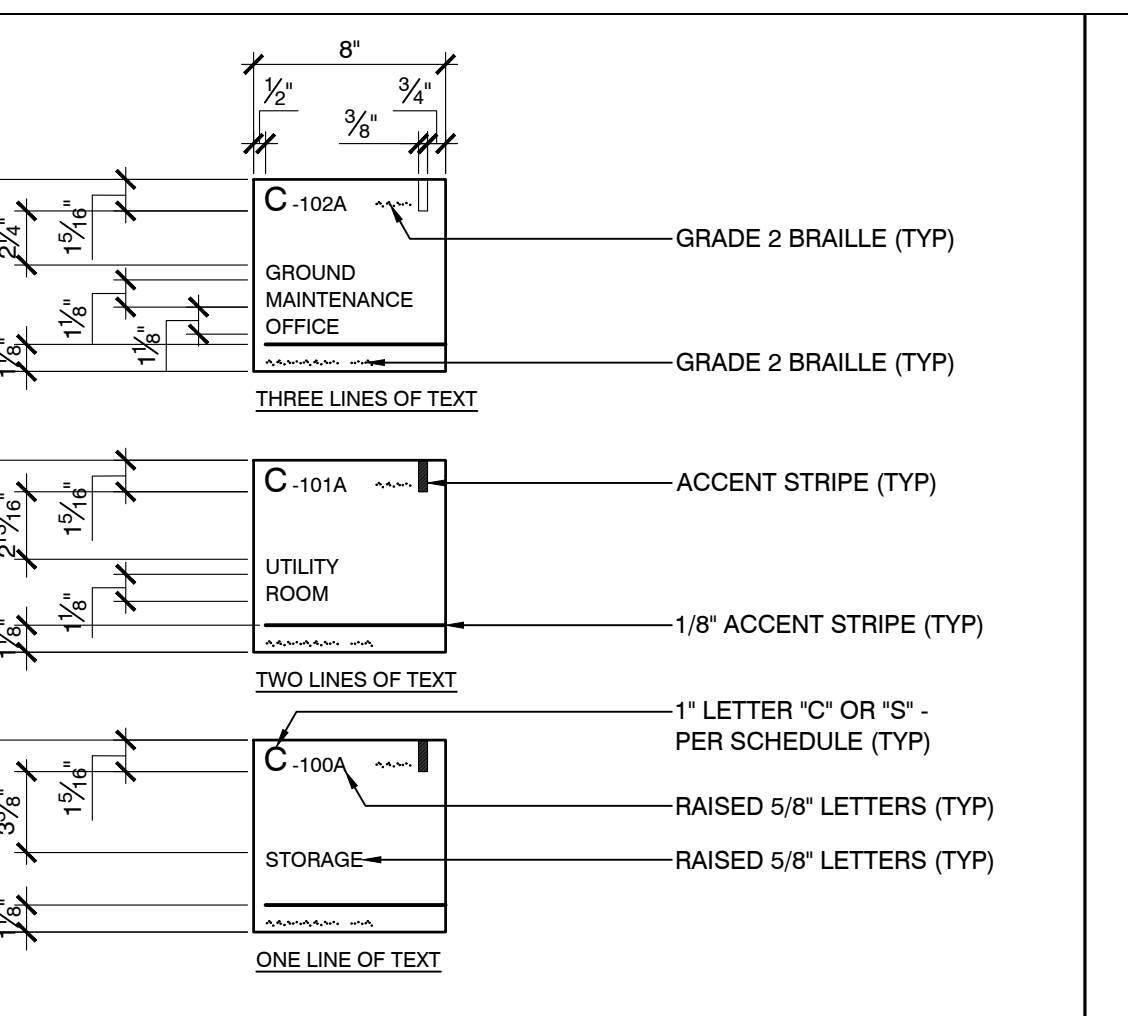
ENTRANCE SIGN	SCALE	13
DETAIL	1-1/2" = 1'-0"	



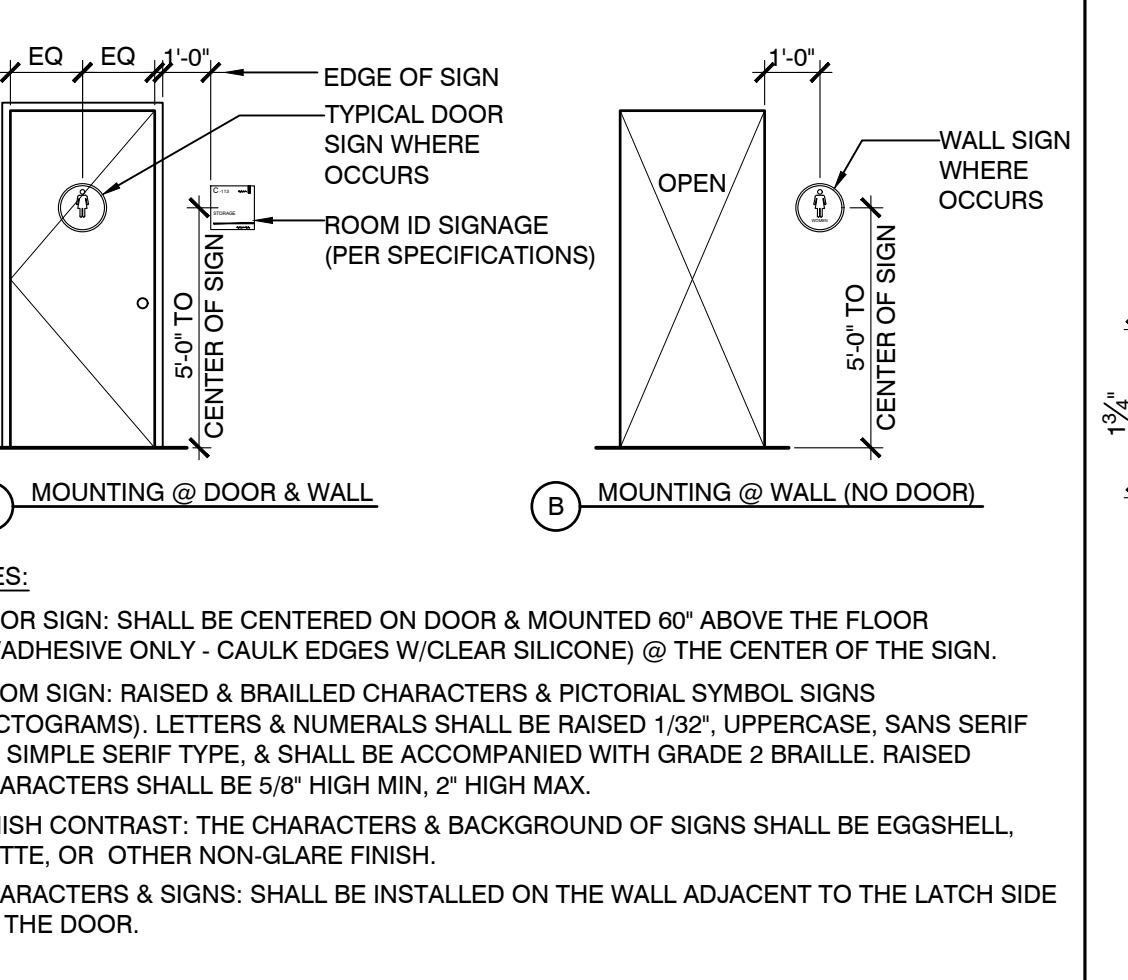
DOOR PASSAGE	SCALE	12
DETAIL	1/4" = 1'-0"	



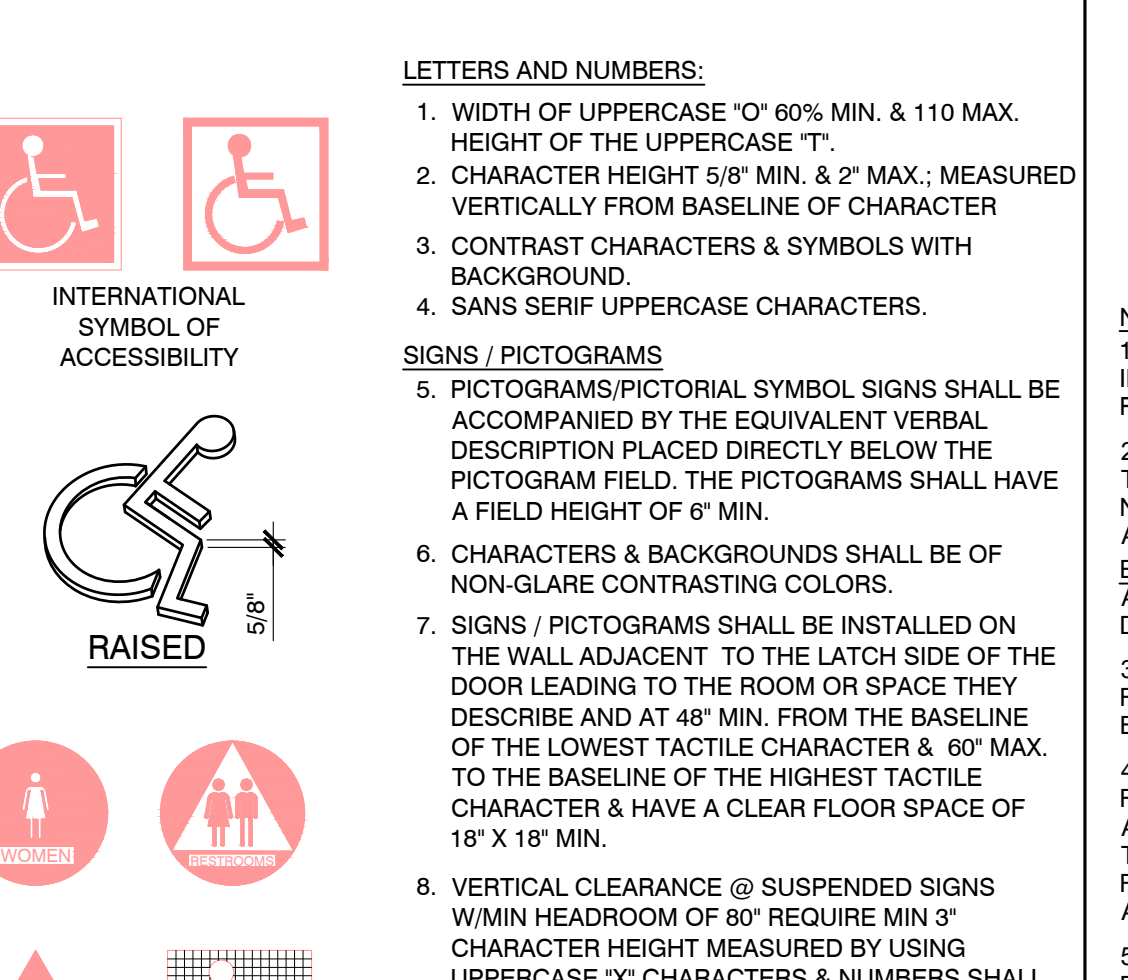
DOOR REQUIREMENTS	SCALE	11
DETAIL	1/4" = 1'-0"	



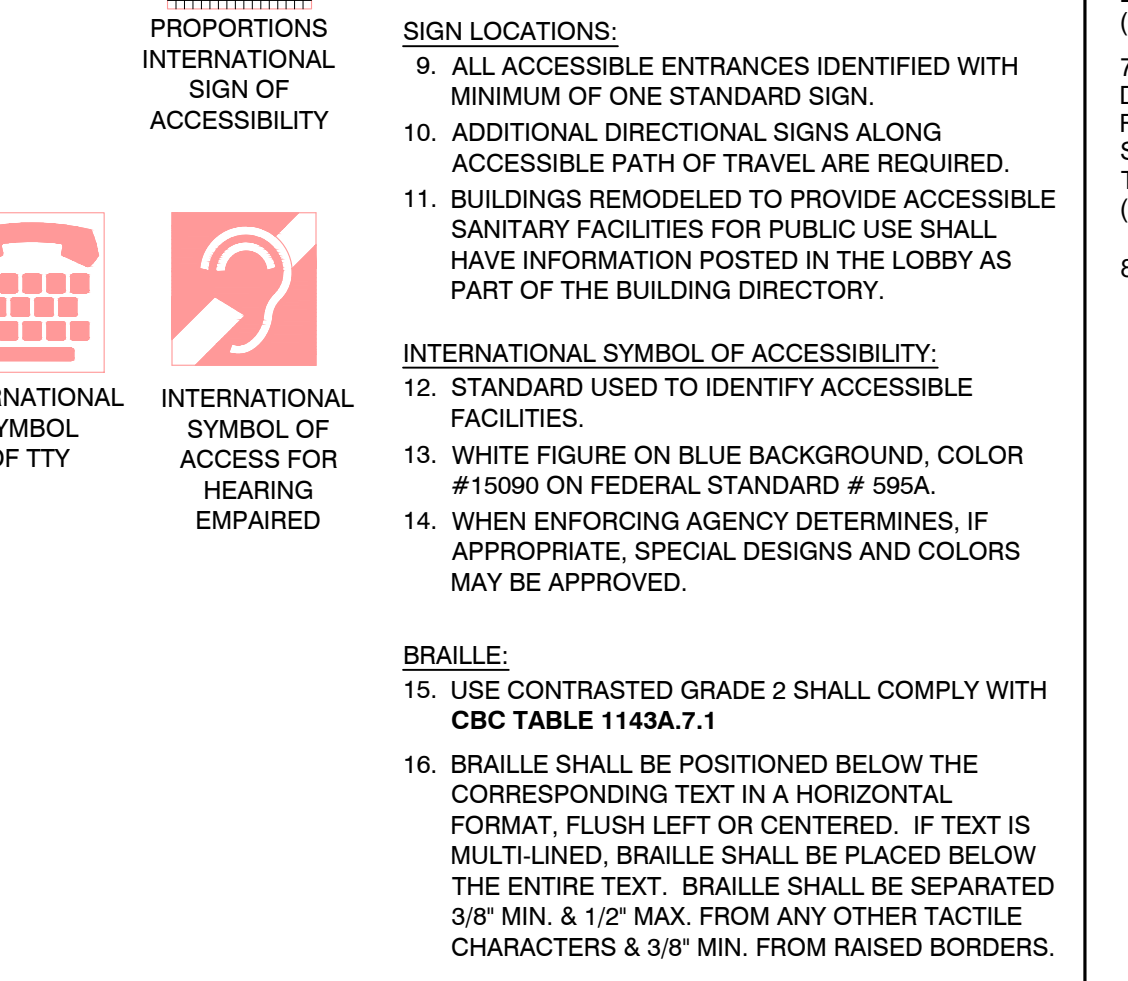
ACCESSIBILITY SIGNAGE	SCALE	10
ROOM IDENTIFICATION SIGN	1-1/2" = 1'-0"	



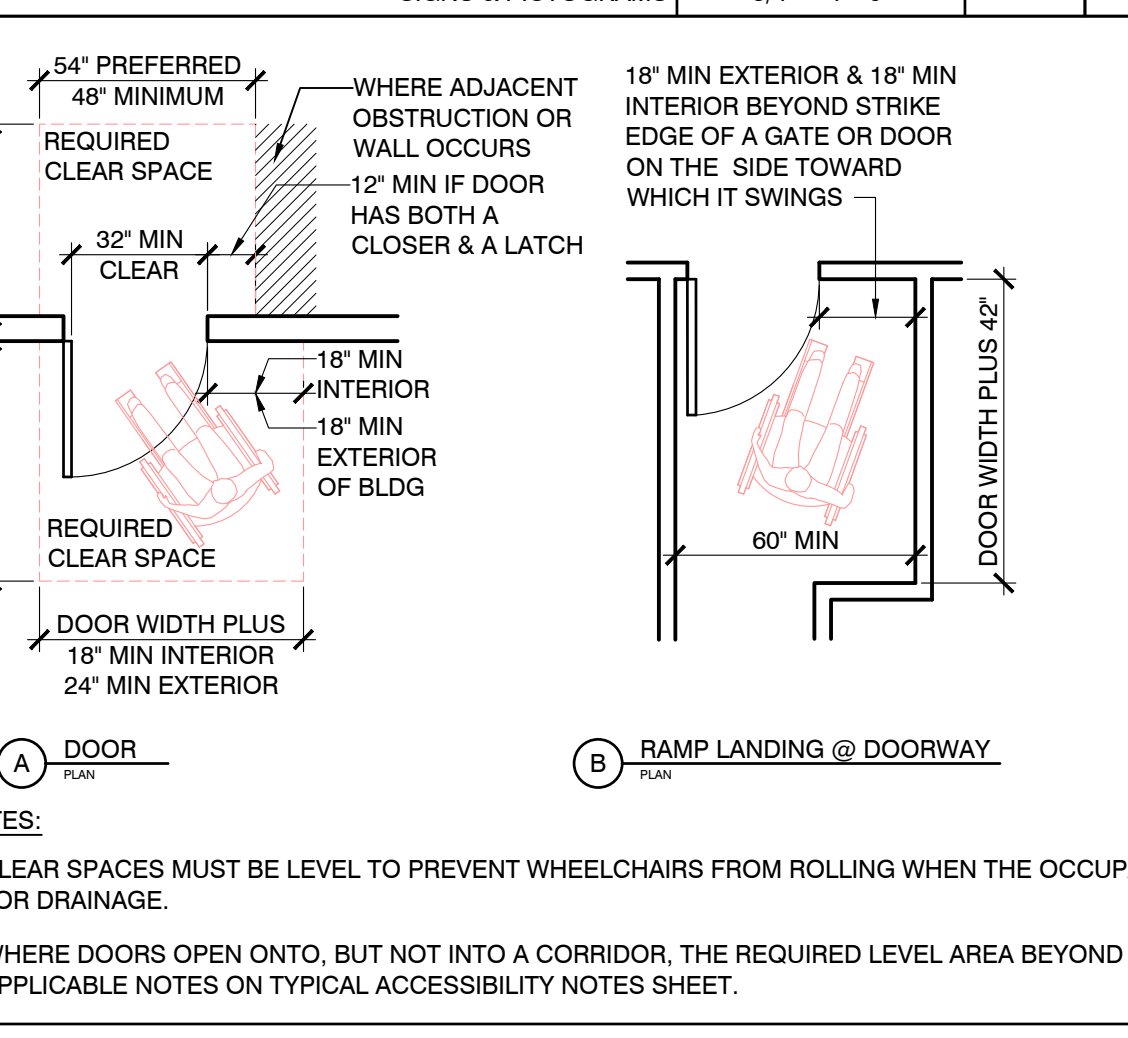
ACCES. SANITARY FACILITIES	SCALE	9
MOUNTING HEIGHT - ROOM IDENTIFICATION SIGN	1/4" = 1'-0"	



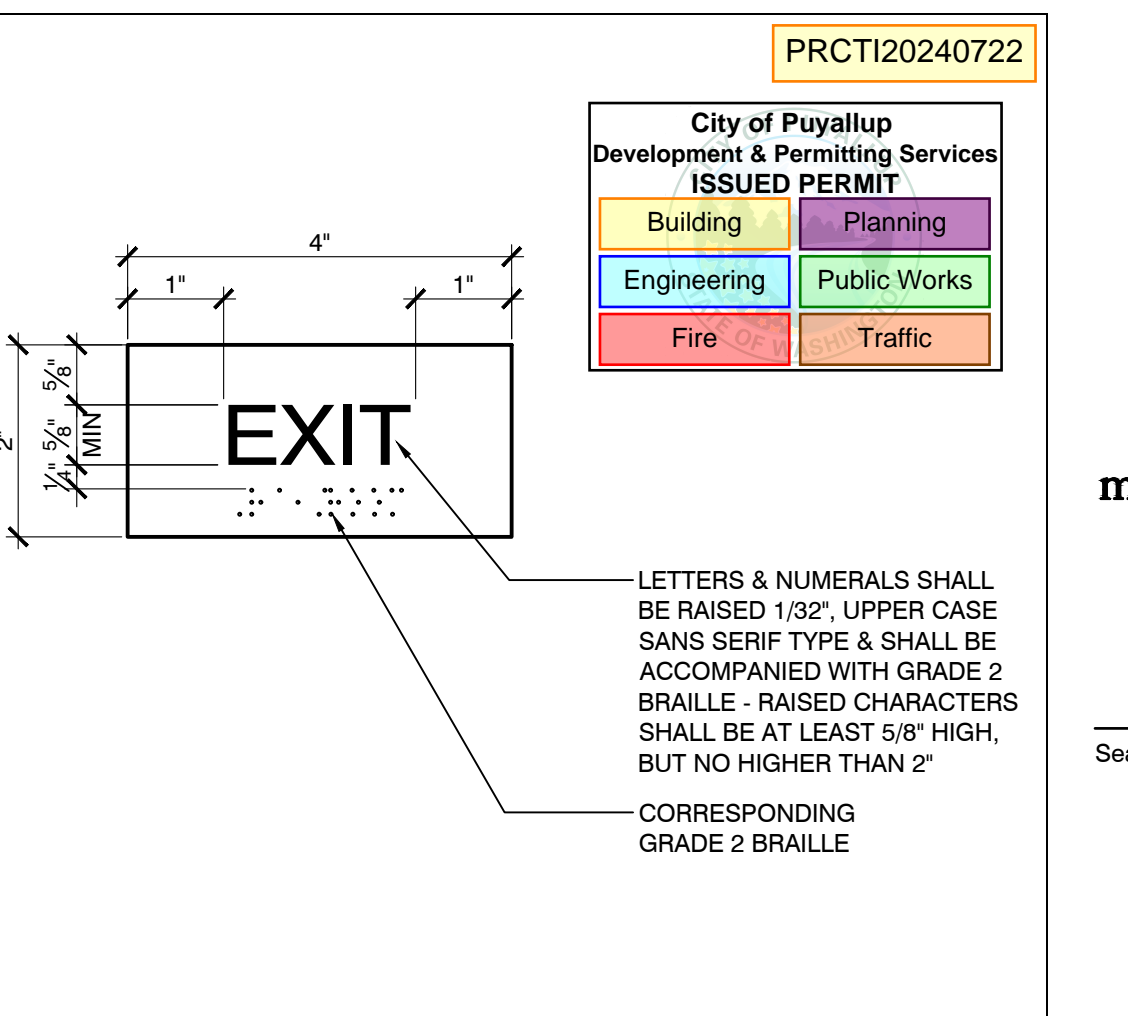
ENTRANCE SIGN	SCALE	13
DETAIL	1-1/2" = 1'-0"	



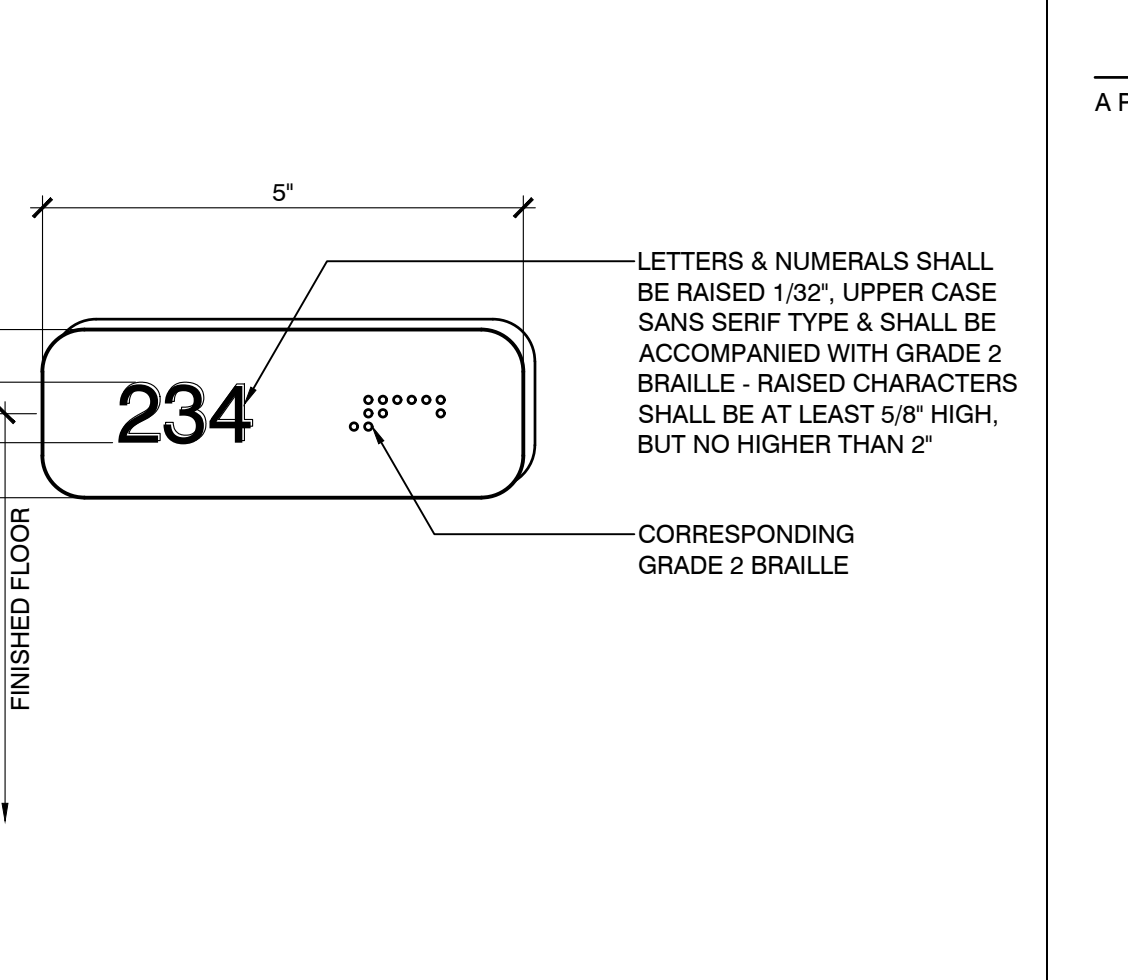
ACCESSIBILITY SIGNAGE	SCALE	7
SIGNS & PICTOGRAMS	3/4" = 1'-0"	



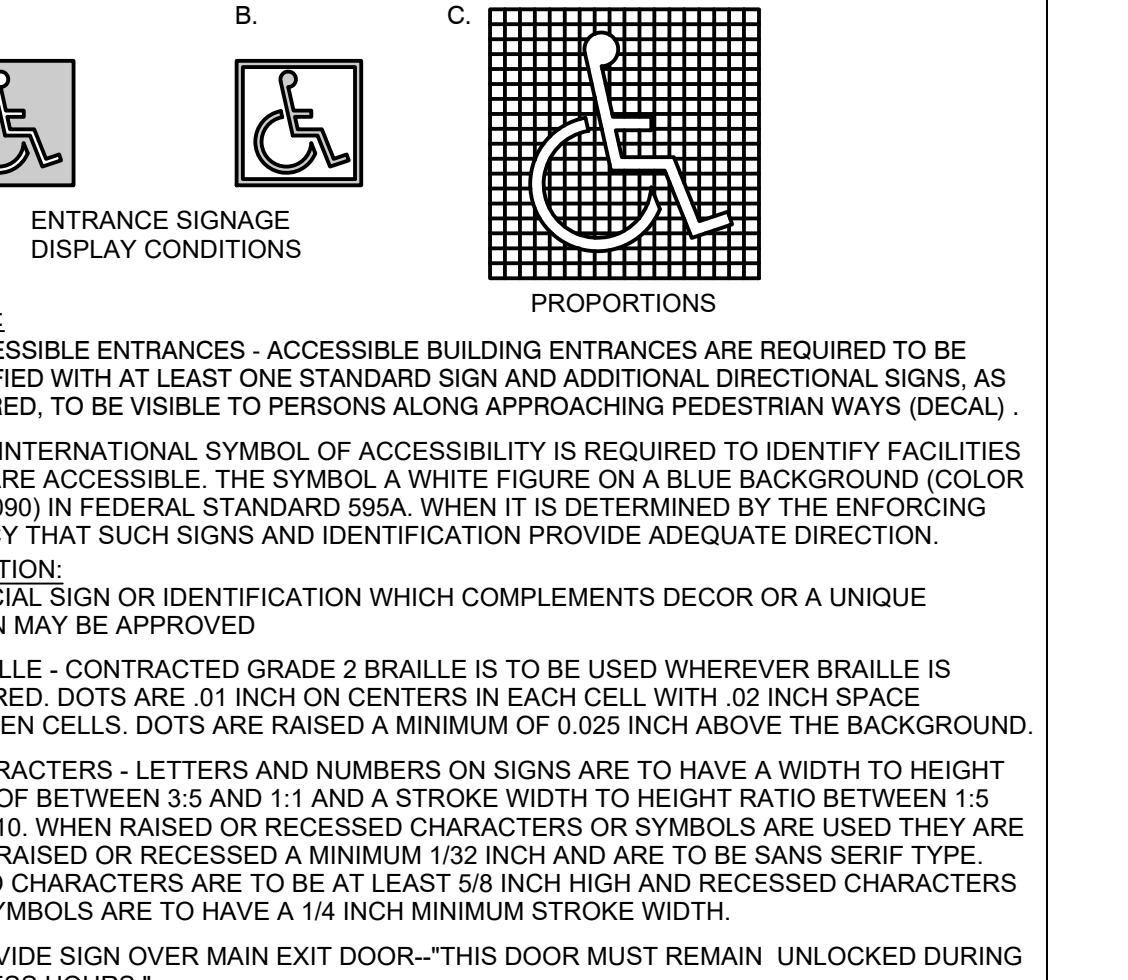
DOOR CLEAR SPACE	SCALE	1
DETAIL	1/4" = 1'-0"	



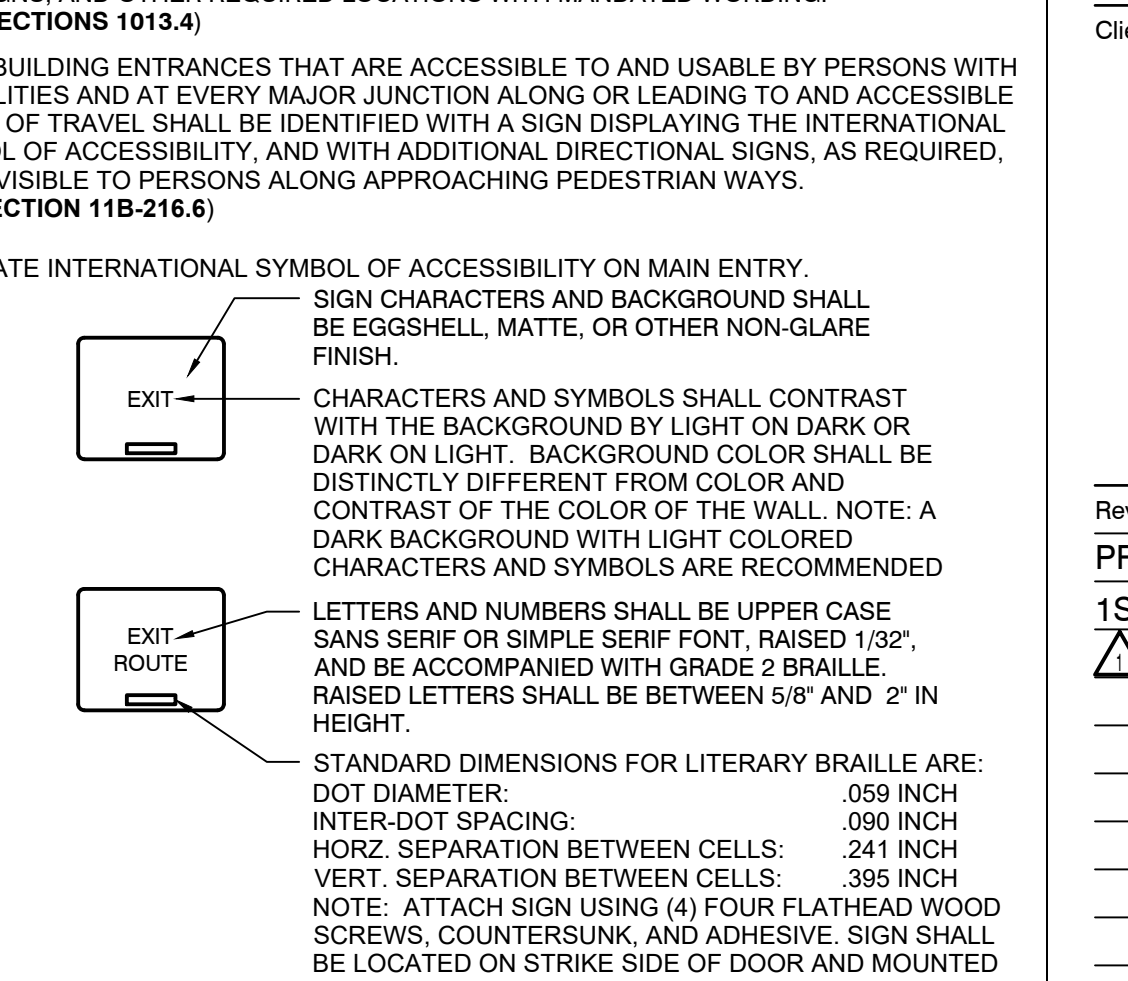
ADA SIGNAGE	SCALE	5
ROOM IDENTIFICATION SIGN	6" = 1'-0"	



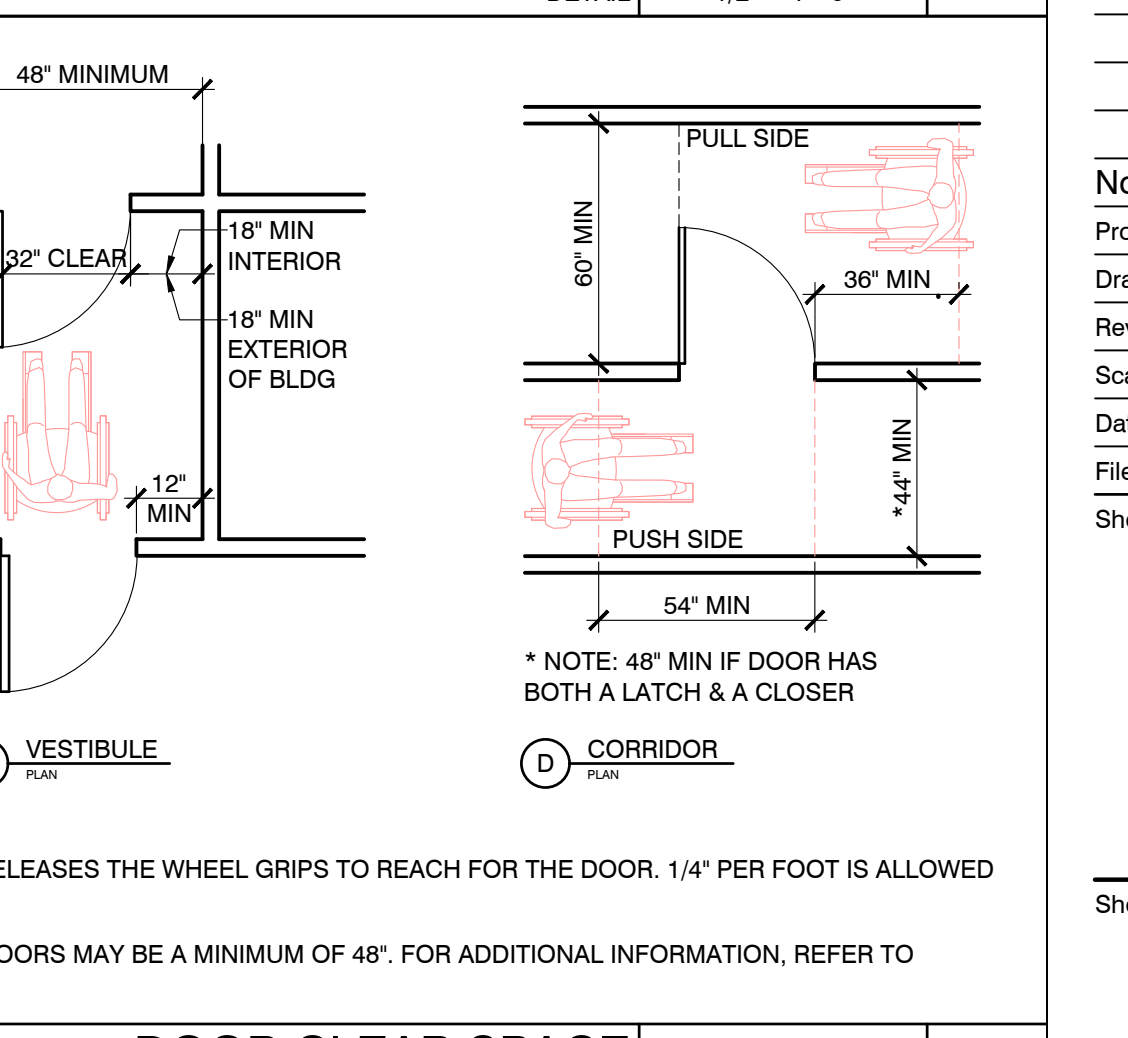
ACCESSIBILITY SIGNAGE	SCALE	4
ROOM IDENTIFICATION SIGN	6" = 1'-0"	



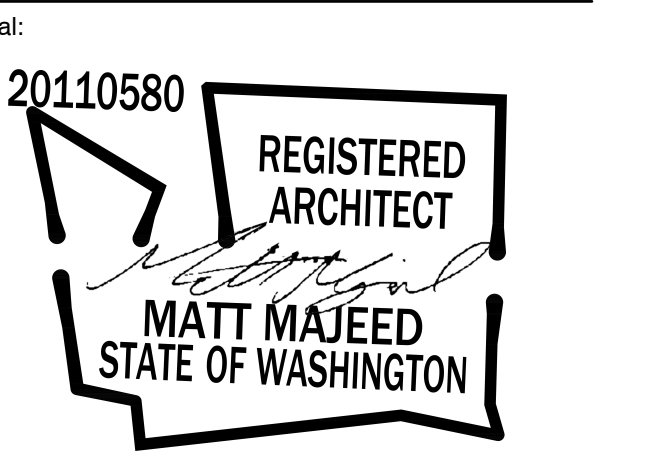
ACCESSIBILITY SIGNAGE	SCALE	4
ROOM IDENTIFICATION SIGN	6" = 1'-0"	



SIGNAGE FOR ENTRY/EXIT	SCALE	2
DETAIL	1/2" = 1'-0"	



DOOR CLEAR SPACE	SCALE	1
DETAIL	1/4" = 1'-0"	



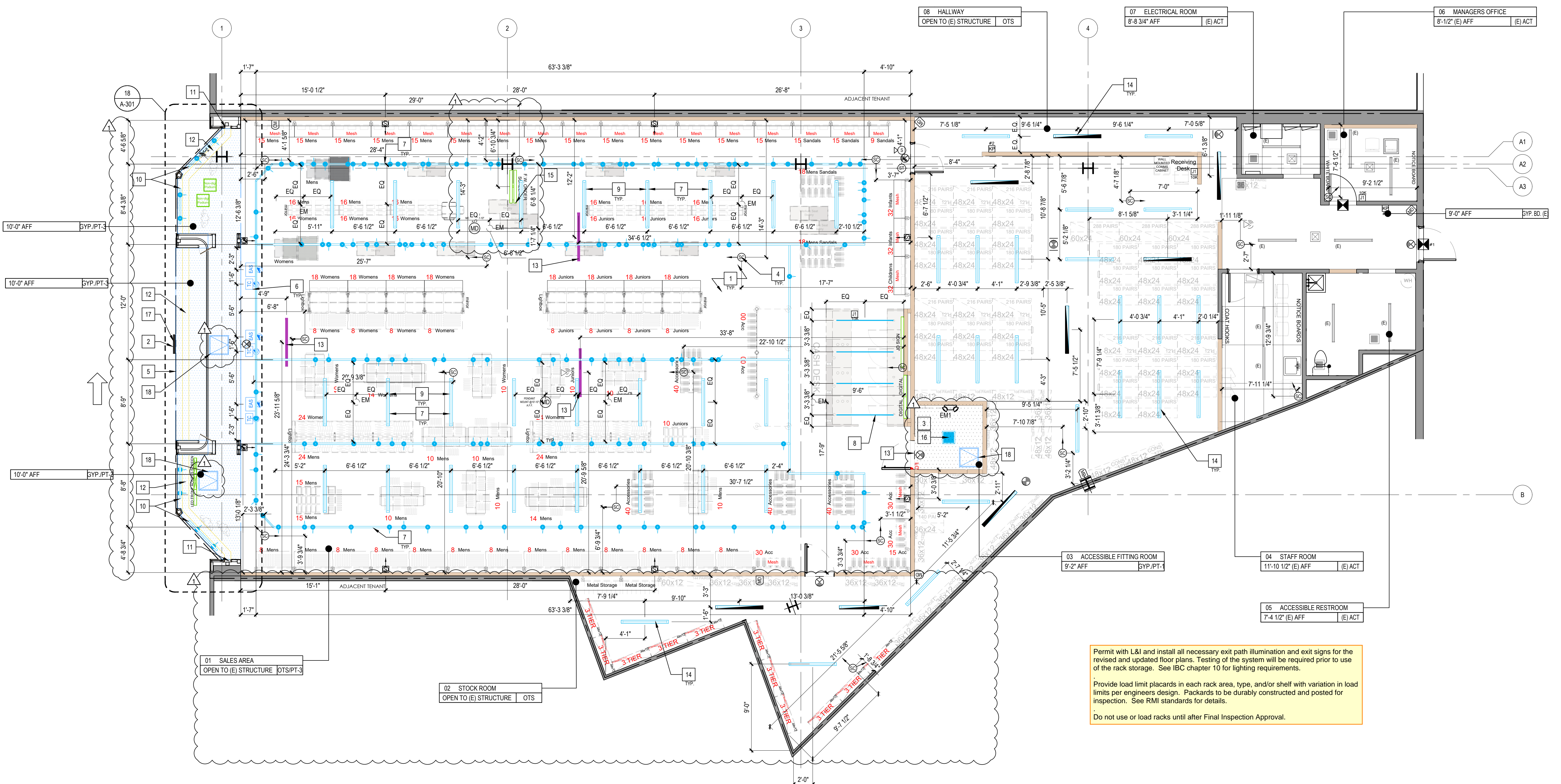
A Project for:
JD SPORTS #1315
SOUTH HILL MALL
 3500 SOUTH MERIDIAN, SPACE #530
 PUYALLUP, WA 98373

Client:
JD SPORTS
 3308 N. MITTHOEFFER ROAD
 INDIANAPOLIS, IN 46235

Revisions:		
PROGRESS SET	12.18.2023	
1ST CITY SUBMITTAL	01.10.2024	
△ DESIGN DENSITY	05.08.2024	

No.	Description	Date
Project No.:		23606.20
Drawn By:		
Reviewed By:		
Scale:		
Date:		10.15.2023
Filename:		
Sheet Title:		

ACCESSIBILITY NOTES AND DETAILS



Permit with L&I and install all necessary exit path illumination and exit signs for the revised and updated floor plans. Testing of the system will be required prior to use of the rack storage. See IBC chapter 10 for lighting requirements.
 Provide load limit placards in each rack area, type, and/or shelf with variation in load limits per engineers design. Placards to be durably constructed and posted for inspection. See RMI standards for details.
 Do not use or load racks until after Final Inspection Approval.

18 REFLECTED CEILING PLAN
 SCALE: 3/16" = 1'-0"

- ALL CEILING HEIGHTS ARE FROM TOP OF FINISH FLOOR TO UNDERSIDE OF FINISH CEILING OR LIGHT FIXTURE - TYP. U.O.N.
- THE GC SHALL SET ALL CEILING AND SOFFITS USING A LASER LEVEL TO ACHIEVE A CEILING THAT IS PLUMB, LEVEL AND SQUARE TO ALL WALLS AND SOFFITS
- LATERAL BRACING FOR SUSPENDED CEILING MUST BE PROVIDED BY CEILING CONTRACTOR. ADDITIONAL HANGER RODS AND SAFETY WIRES FOR LIGHT FIXTURES, DUCTWORK, SPEAKERS, ETC. TO BE THE RESPONSIBILITY OF THE CEILING CONTRACTOR
- THE GC TO VERIFY W/LL METHOD OF ATTACHMENT FOR ALL ITEMS ANCHORED TO, OR SUSPENDED FROM EXISTING STRUCTURE
- ARCH. DRAWINGS DETERMINE THE LOCATION OF LUMINAIRES & SUPERSEDE ALL OTHERS, TYP. U.O.N. - REFER TO ELEC. DRAWINGS FOR EXACT FIXTURE TYPE & QUANTITIES PROVIDED
- GC TO COORDINATE AIMING OF LIGHT FIXTURES WITH OWNER
- REFER TO MECHANICAL DRAWINGS FOR EXPOSED SUSPENDED MECHANICAL DUCTWORK DISTRIBUTION SYSTEM PROVIDE ADEQUATE CLEARANCES FOR FIXTURES, DUCTS, CEILING AND RELATED PERTINENT ITEMS NECESSARY TO MAINTAIN SPECIFIC HEIGHTS ABOVE FINISH FLOOR
- THE GC TO PROVIDE NECESSARY BLOCKING AND BRACING FOR FIXTURE INSTALLATION AND ALL ELECTRICAL COMPONENTS TO COMPLETE THE FINAL INSTALLATION OF ALL FIXTURES - COORDINATE WITH FIXTURE SUPPLIER
- NO CONNECTIONS TO LANDLORD'S ROOF DECK WILL BE PERMITTED. COORDINATE ANY NEW ROOF PENETRATIONS WITH LANDLORD AND LANDLORD'S ROOF CONTRACTOR
- DIMENSIONS ARE FROM FACE OF GYP. BDP. TYP. U.O.N.
- COORDINATE ADDITIONAL CEILING ACCESS DOORS W/ PROJECT MANAGER AND AS REQUESTED BY LANDLORD TO MAINTAIN ACCESS TO LANDLORD EQUIPMENT. MAINTAIN ACCESS TO LANDLORD'S HVAC, ELECTRICAL, AND PLUMBING SYSTEMS, INCLUDING CLEANOUTS, VALVES, DAMPERS, 2" BOXES, SMOKE DETECTORS, ETC.
- ALL RIGID CONDUIT AND JUNCTION BOXES TO BE RUN TIGHT TO DECK IN A CLEAN AND ORDERLY FASHION.
- PROVIDE UNISTRUT SPANNING FROM LANDLORD'S STRUCTURE AS REQUIRED.
- PAINT UNISTRUT, TRAC DUCTS, LIGHTING ESCUTCHEON RINGS/CANOES, AND SALES FLOOR EMERGENCY LIGHTS TO MATCH CEILING (PT-7)
- USE ZIP TIES FOR ALL CORD/WIRE MANAGEMENT. BLACK ZIP TIES TO BE USED FOR BLACK CEILING.
- BOTTOM OF L12 SUSPENDED TRACK LIGHTING AND L4 LINEAR LED FIXTURES AT SALES FLOOR TO BE 10'-0" AFF SPRINKLER LOCATIONS INDICATED FOR HARD ID CEILING ONLY. REFER TO MECH FOR OTS SPRINKLER LOCATIONS.
- BOTTOM OF EMERGENCY LED LIGHTS AT SALES FLOOR TO BE 13'-6" AFF
- MONITOR RELOCATED STOCK ROOM LIGHTING AT SAME HEIGHT AFF AS EXISTING ADJACENT STOCK ROOM LIGHTING
- MOUNT SPEAKERS ON WALL AT 11'-2" AFF IN THE BLACK WALL FINISH GC TO PROVIDE 4 BOX AT EACH SPEAKER LOCATION
- BOTTOM OF FOOTWEAR ORDERING SCREENS AT 8'-6" AFF. AT SUSPENDED FOOTWEAR ORDERING SCREENS, GC TO PROVIDE UNISTRUT SPANNING FROM LANDLORD'S STRUCTURE AS REQUIRED.
- L12 PENDANT LIGHTING TO BE SUSPENDED FROM TRACK LIGHTING
- INDICATIVE LIGHTING LAYOUT SHOWING DESIGN INTENT & QTY. LIGHTING CONTRACTOR TO PERFORM LIGHTING CALCULATIONS FOR APPROVAL BY JD. LIGHTING CONSULTANT TO CONFIRM EMERGENCY LIGHTING REQUIREMENTS. BOTH LIGHTING REQUIREMENTS AS PER ID SETTING OUT.
- GC TO PROTECT ACRYLIC PANELS OF LIGHT BOXES DURING CONSTRUCTION. DO NOT APPLY TAPE TO ACRYLIC PANELS.
- LIGHTING LAYOUT SHOWN FOR DESIGN INTENT AND QUANTITY. LIGHTING CONTRACTOR TO PERFORM LIGHTING CALCS FOR JD APPROVAL. ELECTRICAL ENGINEERS TO CONFIRM EMERGENCY LIGHTING REQUIREMENTS PER CODE.
- MODIFY EXISTING SPRINKLER SYSTEM THROUGHOUT THE AREA OF WORK IN ACCORDANCE TO CODE

- ALL EXPOSED DUCTWORK, CEILING STRUCTURE, PIPING, UNISTRUT, HVAC GRILLES, SPRINKLER PIPING, SPRINKLER HEADS, ETC TO BE PAINTED RAL 7012 / PT-7
- PROVIDE JUNCTION BOX ABOVE SOFFIT AS REQUIRED TO ACCOMMODATE JD SIGNAGE. KEEP EXISTING OUTLETS
- 5/8" THICK GWB TYPE 'X' OVER SUSPENDED CEILING SYSTEM. REFER TO A-125 FOR FINISH INFORMATION
- SECURITY CAMERA TYP. - REFER TO ELECTRICAL DWGS. CONFIRM LOCATIONS WITH LOSS PREVENTION PRIOR TO INSTALLATION. GC TO INSTALL CLINTON POLES AS PER MANUFACTURER'S SPECIFICATIONS. GC TO INSTALL PLUL STRINGS FOR VENDOR TO RUN CABLES.
- 5/8" TYP 'X' GYP. BD. ON 3/8" X 18 GA. METAL STUD CEILING JOISTS @ 16" OC. BOTTOM OF SOFFIT @ 10'-0". REFER TO A-125 FOR FINISH INFORMATION.
- TRAFFIC COUNTER SYSTEM TO BE SUSPENDED ON THE BOTTOM OF CLINTON POLE @ 10'-0" TYP. - REFER TO ELECTRICAL DWGS. TO COMPLETE THE FINAL INSTALLATION OF ALL FIXTURES - COORDINATE WITH FIXTURE SUPPLIER
- LIGHT FIXTURE TO BE HUNG BY AIRCRAFT CABLE @ 11'-2" AFF TO BOTTOM OF FIXTURE EVERY 4'-0" O.C. AIRCRAFT CABLE TO BE PROVIDED BY GC. SEE DETAILS 1A-502 AND 1A-502
- SUSPENDED LINEAR JAZZ EXTRUSION LIGHTING TYP. OF 5 TO BE HUNG AT 9'-10" AFF TO UNDERSIDE OF FIXTURE. VERIFY THAT LIGHTING HEIGHT DOES NOT OBSTRUCT VIEW OF LIGHTBOX BEHIND COUNTER. COORDINATE WITH JD PM AS REQUIRED.
- LP-4 FIXTURE MOUNTED CENTRALLY WITHIN THE TRACK AT 6'-7" ON CENTER. MINIMUM 1'-6" FROM TRACK AT EACH END.
- LIGHTING TRACK IN WINDOW BED TO BE SURFACE MOUNTED
- 3M YELLOW ILLUMINATED RETURN PANELS, SEE A301- STOREFRONT PLAN AND ELEVATION TYP.
- 3M YELLOW ILLUMINATION CEILING PANEL, SEE A-302 - ENLARGED STOREFRONT RCP
- MONITOR RELOCATED STOCK ROOM LIGHTING AT SAME HEIGHT AFF AS EXISTING ADJACENT STOCK ROOM LIGHTING
- MOUNT SPEAKERS ON WALL AT 11'-2" AFF IN THE BLACK WALL FINISH GC TO PROVIDE 4 BOX AT EACH SPEAKER LOCATION
- BOTTOM OF FOOTWEAR ORDERING SCREENS AT 8'-6" AFF. AT SUSPENDED FOOTWEAR ORDERING SCREENS, GC TO PROVIDE UNISTRUT SPANNING FROM LANDLORD'S STRUCTURE AS REQUIRED.
- L12 PENDANT LIGHTING TO BE SUSPENDED FROM TRACK LIGHTING
- INDICATIVE LIGHTING LAYOUT SHOWING DESIGN INTENT & QTY. LIGHTING CONTRACTOR TO PERFORM LIGHTING CALCULATIONS FOR APPROVAL BY JD. LIGHTING CONSULTANT TO CONFIRM EMERGENCY LIGHTING REQUIREMENTS. BOTH LIGHTING REQUIREMENTS AS PER ID SETTING OUT.
- GC TO PROTECT ACRYLIC PANELS OF LIGHT BOXES DURING CONSTRUCTION. DO NOT APPLY TAPE TO ACRYLIC PANELS.
- LIGHTING LAYOUT SHOWN FOR DESIGN INTENT AND QUANTITY. LIGHTING CONTRACTOR TO PERFORM LIGHTING CALCS FOR JD APPROVAL. ELECTRICAL ENGINEERS TO CONFIRM EMERGENCY LIGHTING REQUIREMENTS PER CODE.
- MODIFY EXISTING SPRINKLER SYSTEM THROUGHOUT THE AREA OF WORK IN ACCORDANCE TO CODE

- CENTER LIGHT FIXTURE IN SPACE
- NEW ILLUMINATED JD LOGO SIGNAGE SUSPENDED WITH METAL RETURNS FINISH RAL 9004-PT-4 30% GLOSS SUSPENDED FROM SOFFIT VIA STAINLESS STEEL TUBING FINISH RAL 9004-PT-4 30% GLOSS. SEE ELECTRICAL DRAWINGS FOR POWER INFORMATION.
- 24"x24" ACCESS PANEL AT FITTING ROOM, STAFFROOM, AND STOREFRONT SOFFIT. SEE 5A-502 FOR MORE INFORMATION. GC TO MATCH THE FINISH OF THE SOFFIT OR CEILING.

SYMBOL	DESCRIPTION	SYMBOL	DESCRIPTION	SYMBOL	DESCRIPTION
[Symbol]	F2, 15" X 15" LED FLAT PANEL	[Symbol]	TRAFFIC COUNTER, PROVIDE CONDUIT FOR DATA	[Symbol]	SURFACE MOUNT DOOR CONTACT
[Symbol]	NEW LP4, 2-LAMP STRIP LIGHT, 13W TUBE LED LAMP, BLACK - SEE DTL 1A-502	[Symbol]	WIRELESS ACCESS POINT, PROVIDE CONDUIT FOR DATA. SEE DTL 3A-502	[Symbol]	
[Symbol]	NEW T2, PAR24 LED LAMP, 1600 LUMENS, BLACK, LAMP LAMP HOLDER BLACK, BLACK TRACK, LINE END FEED BLACK, MINI COUPLER BLACK, 90 DEGREE COUPLER - SEE DTL 1A-502	[Symbol]	INFRARED SENSOR	[Symbol]	
[Symbol]	SUSPENDED JAZZ LINEAR EXTRUSION LIGHTING.	[Symbol]	CURTAIN WALL MOUNTED MOTION	[Symbol]	
[Symbol]	ILLUMINATED EXIT SIGN WITH 6" HIGH RED LETTERS AND LISTED/LABELED IN ACCORDANCE WITH UL 924. REFER TO ELECTRICAL DRAWINGS	[Symbol]	360 MOTION CEILING MOUNTED	[Symbol]	
[Symbol]	EMERGENCY LIGHT FIXTURE	[Symbol]	WALL MOUNTED MOTION	[Symbol]	
[Symbol]	HATCH INDICATES NEW DROP GWB CEILING / SOFFIT FINISHED AND DECORATED TO SPEC	[Symbol]	ALARM SIREN	[Symbol]	
[Symbol]	24"x24" ACCESS PANEL	[Symbol]	SECURITY ALARM STROBE LIGHT	[Symbol]	
[Symbol]	SPRINKLER HEADS FOR DESIGN PURPOSED ONLY. REFER TO FIRE PROTECTION DRAWINGS. ANY CONCEALED COVERS TO MATCH CEILING FINISH	[Symbol]	KEY PAD	[Symbol]	
[Symbol]	HVAC RETURN, SEE MECHANICAL	[Symbol]	KLIPSCH CA-800T BLACK SURFACE SPKR	[Symbol]	
[Symbol]	HVAC SUPPLY, SEE MECHANICAL	[Symbol]	MOOD GB22T BLACK SURFACE SPKR	[Symbol]	
[Symbol]	NEW EAS PADS COLOR: BLACK PROVIDE CONDUIT FOR DATA	[Symbol]	NEW HOT WATER HEATER, EXISTING TO REMAIN.	[Symbol]	
[Symbol]	SECURITY CAMERA BY OWNER'S VENDOR. GC TO PROVIDE CONDUIT AND PULL STRING. VERIFY FINAL LOCATION OF CAMERA WITH OWNER'S VENDOR	[Symbol]	REMOTE VOLUME CONTROL (10K POTENTIOMETER)	[Symbol]	

17 GENERAL NOTES
 SCALE: NTS

13 KEY NOTES
 SCALE: NTS

1 RCP SYMBOLS LEGEND
 SCALE: NTS