



Plan Change Request

A plan change request is necessary for civil projects that propose substantial changes to the approved civil plans and requires additional review by City of Puyallup review staff. This application should be filled out completely and sent directly to the City Review Engineer assigned to the civil permit application via email.

Project Information

Site Address/ Parcel #: 0420331121 Permit #: PRCCP20231620
Owner: Washington State Fair Email: marty@thefair.com
Design Engineer: Justin Jones Email: justin@jnjteam.com
Contractor: Absher Construction Email: cory.patton@absherco.com

Originator of the Request: Owner Design Engineer Contractor City of Puyallup

- Does this request require a deviation from city standards? Yes No
- If yes, submit an [Alternative Method's Request](#) via the [CityView Portal](#) instead of this form

➤ Indicate the development infrastructure being affected

Road Storm Water Sanitary Grading Erosion Control

➤ Specify the approved civil plans affected: C5-101, C5-201

➤ Describe the change(s) being requested:

The proposed gravity sewer system will be replaced with a sewer force main. The connection to the existing side sewer will be installed per the City of Puyallup Standard Detail 04.05.01 for a pressure line connection to a gravity line side sewer connection. Excess pipe will be left for extension to a future water vault.

The proposed Water Feature vaults will be replaced with a revised Water Feature design. The proposed supply line will connect to the WSF Domestic Water line and RPBA. This line will run into the outer concrete band circle and be capped. A future connection to the proposed water feature vault will be installed from this domestic line connection. Future Landscaping

is expected within the large concrete band circle, so the proposed irrigation line will connect to the WSF irrigation line. This line is in will be capped for future landscaping in the concrete band circle.

➤ All signatures are required to process this request unless initiated by the City of Puyallup. Final approval/denial will be made by the City Review Engineer. All changes must be fully approved/denied prior to any work on the requested changes. Any work completed prior to approval is at the risk of the developer/contractor and may not be approved by the City.

Owner
Jeff Hill Digitally signed by Jeff Hill
City Inspector

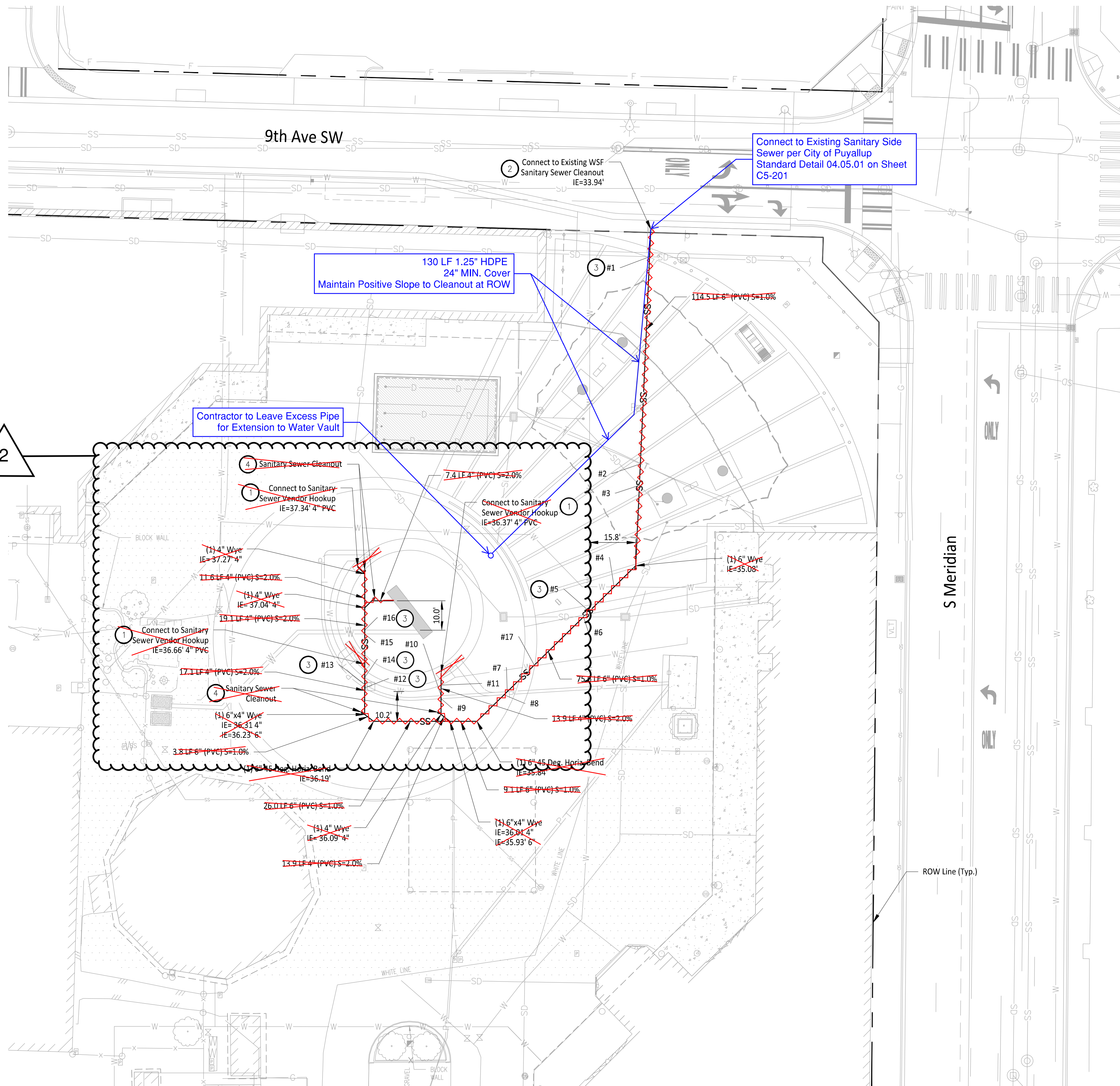
Design Engineer

City Reviewer

Contractor
APPROVED
Approved/ Denied

Date: 7/3/2024

File: 1507012C-UT-SSW.dwg Plot: J:\1507 - Washington State Fair\1507-012 Gold Gate CAD\ Printed by: JMJ Date: 30-Apr-24 1:20:44pm



CONSTRUCTION NOTES

- Domestic Water Service and Sanitary Sewer Vendor Hook Ups to be Installed per Detail A on Sheet C5-201
- Install Commercial Side Sewer Connection per City of Puyallup Standard Detail 04.03.04 on Sheet C4-201.
- Contractor to install foam pad between pipe crossings with less than 18" of vertical clearance. The pad shall be O.D. x O.D. x 2.5 inches thick minimum or as required to protect the pipes. Above O.D. is equal to the outside diameter of the larger pipe. The pad shall be a polyethylene foam plank (Dow Plastics Ethafoam 220), or approved equal. See Detail B on Sheet C5-201 for detail, and Sheet C6-201 for City of Puyallup Utility Crossing Standard Details.
- Install Cleanout per City of Puyallup Standard Detail 04.03.04 on Sheet C4-201.

GENERAL NOTES

- Contractor to Pothole, Locate Horizontal and Vertical Utilities and Verify with Engineer prior to any Utility Work.

Utility Crossing Table			
Intersection #	Above Crossing Line	Below Crossing Line	Material Vertical Separation (ft)
#1	36" Conc. Stormwater Pipe	6" PVC Sanitary Sewer Pipe	0.58
#2	Telecommunications Line	6" PVC Sanitary Sewer Pipe	3.64
#3	8" DI Stormwater Pipe	6" PVC Sanitary Sewer Pipe	3.16
#4	6" Cast Iron Water Pipe	6" PVC Sanitary Sewer Pipe	1.59
#5	6" Cast Iron Water Pipe	6" PVC Sanitary Sewer Pipe	1.17
#6	8" DI Stormwater Pipe	6" PVC Sanitary Sewer Pipe	2.10
#7	Telecommunications Line	6" PVC Sanitary Sewer Pipe	1.97
#8	Power Line	6" PVC Sanitary Sewer Pipe	1.95
#9	Power Line	6" PVC Sanitary Sewer Pipe	2.46
#10	Telecommunications Line	6" PVC Sanitary Sewer Pipe	2.44
#11	2" Poly Water Pipe	6" PVC Sanitary Sewer Pipe	2.00
#12	Power Line	6" PVC Sanitary Sewer Pipe	1.48
#13	Telecommunications Line	6" PVC Sanitary Sewer Pipe	1.45
#14	2" Poly Water Pipe	6" PVC Sanitary Sewer Pipe	1.56
#15	2" Poly Water Pipe	6" PVC Sanitary Sewer Pipe	1.26
#16	2" Poly Water Pipe	6" PVC Sanitary Sewer Pipe	1.23
#17	2" Poly Water Pipe	6" PVC Sanitary Sewer Pipe	1.37

Owner/Developer:

Washington STATE FAIR
PUYALLUP

Washington State Fair
110 9th Ave SW
Puyallup, WA 98371
(253) 841-5356

Architect:
Jeff Brown Architecture
12181 C Street South
Tacoma, WA 98444
(253) 606-8324
Contact: Jeff Brown

Engineer:



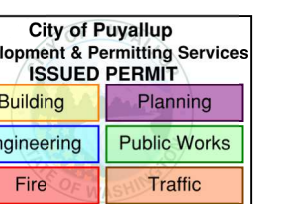
Justin Jones, PE
905 Main St. Suite 200
Sumner, WA 98390
(206) 596-2020

Project:

WSF Gold Gate Redevelopment

Civil Construction Permit

ONE INCH AT FULL SCALE. IF NOT, SCALE ACCORDINGLY.



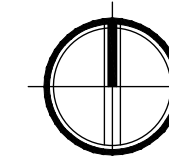
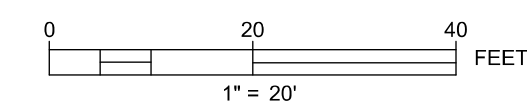
REV	DATE	DESCRIPTION
1	03-04-24	City Comment Revision #1
2	04-18-24	City Comment Revision #2

APPROVED

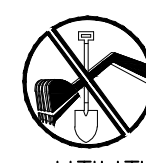
BY: *Lance D. Helgeson*
CITY OF PUYALLUP
DEVELOPMENT ENGINEERING

DATE: 07/03/2024

NOTE: THIS APPROVAL IS VOID AFTER 180 DAYS FROM APPROVAL DATE. THE CITY WILL NOT BE RESPONSIBLE FOR ERRORS AND/OR OMISSIONS ON THESE PLANS. FIELD CONDITIONS MAY DICTATE CHANGES TO THESE PLANS AS DETERMINED BY THE DEVELOPMENT ENGINEERING MANAGER.



CALL TWO BUSINESS DAYS BEFORE YOU DIG



1-800-424-5555
UTILITIES UNDERGROUND LOCATION CENTER

DRAWN BY: DM DESIGN BY: JJ

PROJ. NO: 1507-012

DATE: April 30, 2024

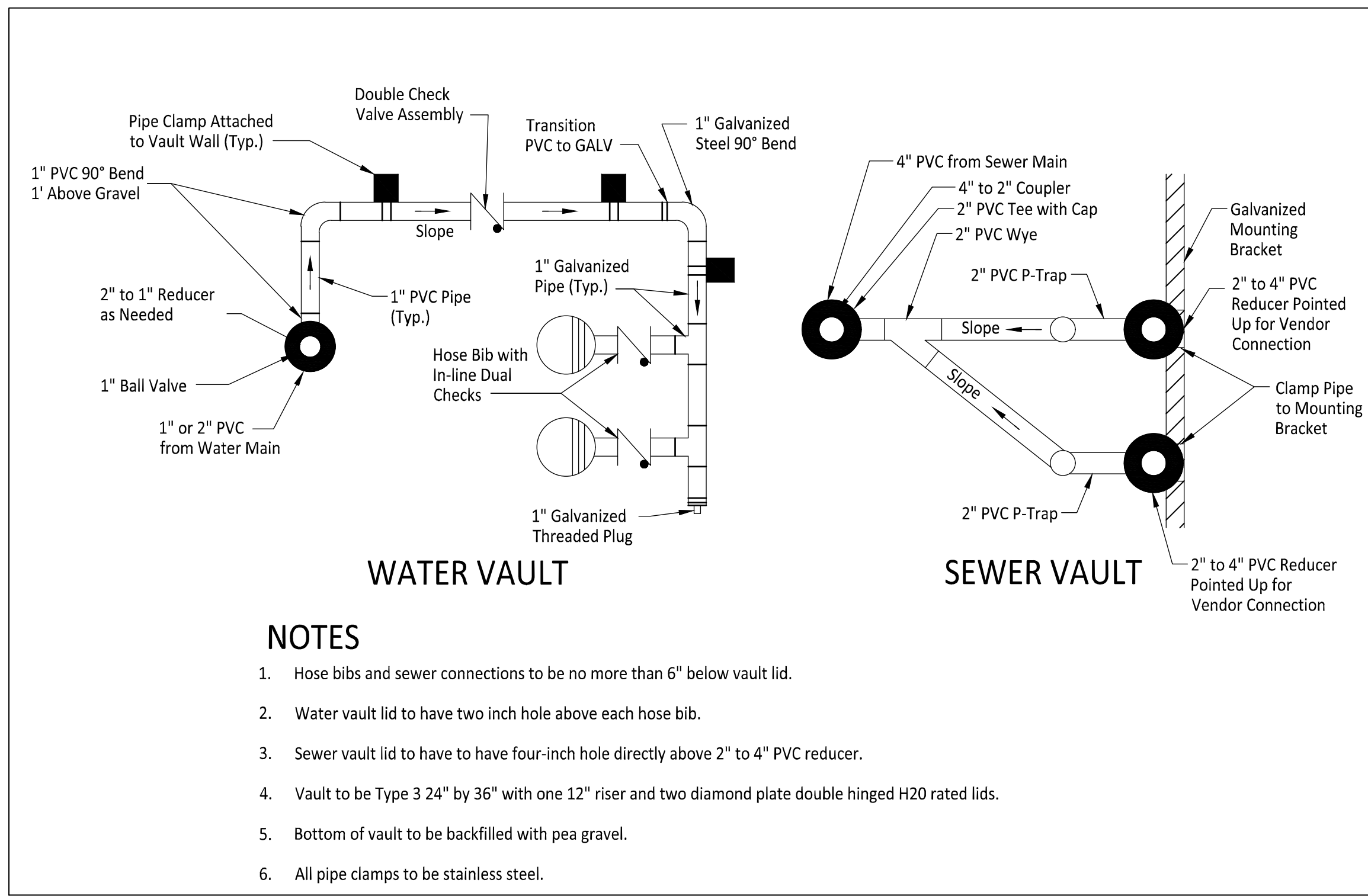
SHEET NAME

Sanitary Sewer Plan

DWG.

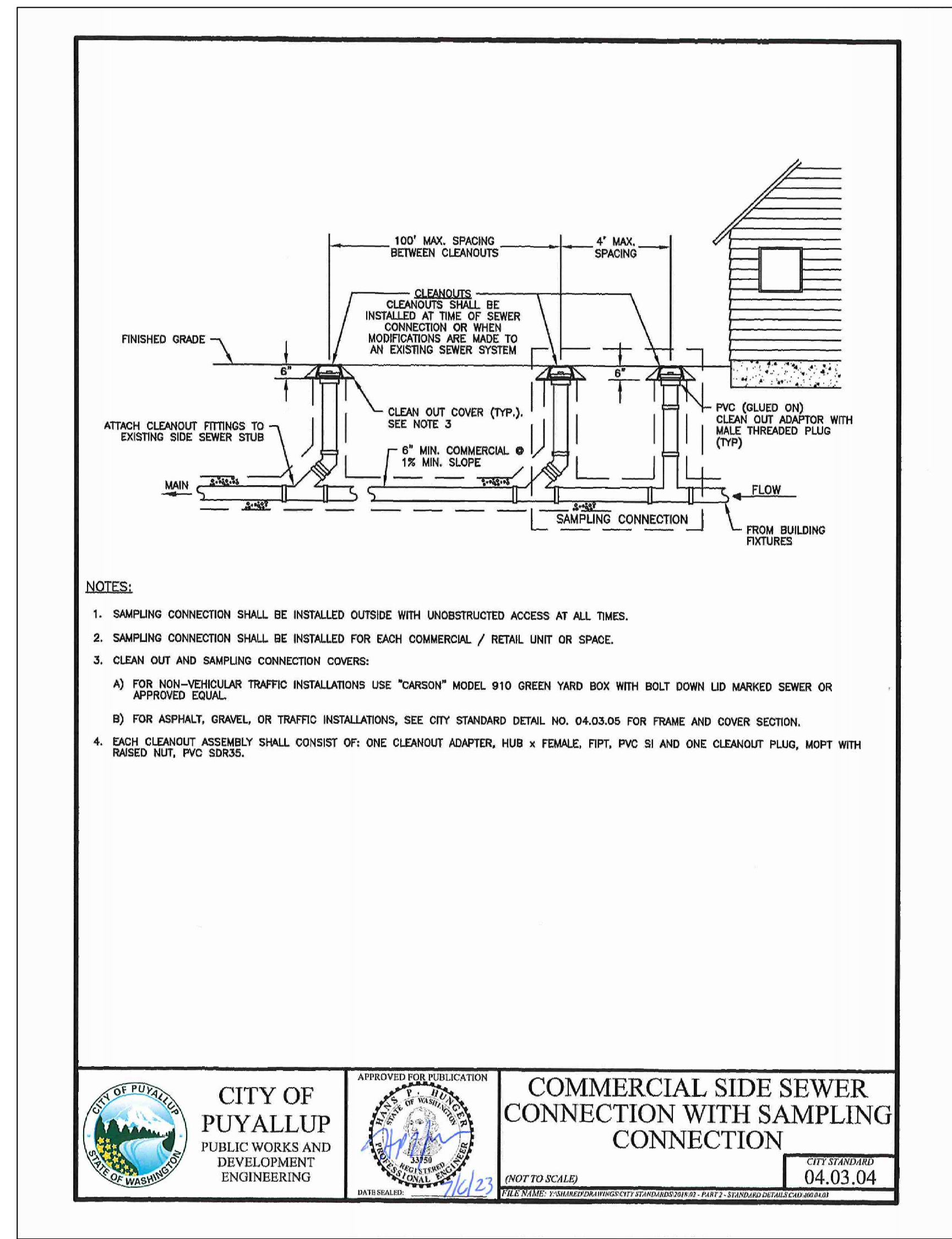
C5-101

22 OF 27



- NOTES**
- Hose bibs and sewer connections to be no more than 6" below vault lid.
 - Water vault lid to have two inch hole above each hose bib.
 - Sewer vault lid to have to have four-inch hole directly above 2" to 4" PVC reducer.
 - Vault to be Type 3 24" by 36" with one 12" riser and two diamond plate double hinged H20 rated lids.
 - Bottom of vault to be backfilled with pea gravel.
 - All pipe clamps to be stainless steel.

**WATER & SEWER VENDOR CONNECTION
DETAIL**
1" = 1" C5-201



- NOTES:**
- SAMPLING CONNECTION SHALL BE INSTALLED OUTSIDE WITH UNOBSTRUCTED ACCESS AT ALL TIMES.
 - SAMPLING CONNECTION SHALL BE INSTALLED FOR EACH COMMERCIAL / RETAIL UNIT OR SPACE.
 - CLEAN OUT AND SAMPLING CONNECTION COVERS:
 - FOR NON-VEHICULAR TRAFFIC INSTALLATIONS USE "CARSON" MODEL 910 GREEN YARD BOX WITH BOLT DOWN LID MARKED SEWER OR APPROVED EQUAL.
 - FOR ASPHALT, GRAVEL, OR TRAFFIC INSTALLATIONS, SEE CITY STANDARD DETAIL NO. 04.03.05 FOR FRAME AND COVER SECTION.
 - EACH CLEANOUT ASSEMBLY SHALL CONSIST OF: ONE CLEANOUT ADAPTER, HUB x FEMALE, FIPT, PVC SI AND ONE CLEANOUT PLUG, MOPF WITH RAISED NUT, PVC SDR35.

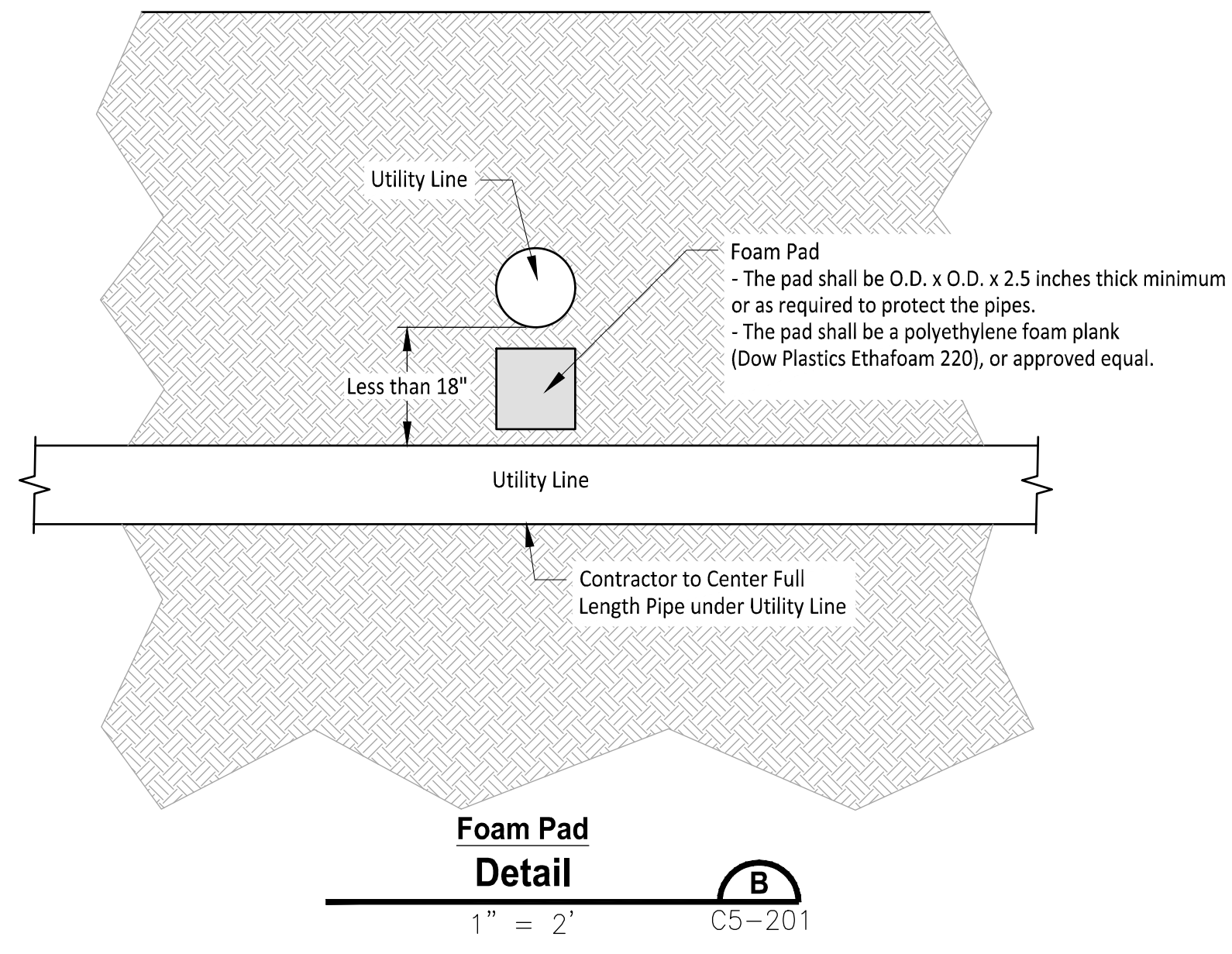
CITY OF PUYALLUP
PUBLIC WORKS AND DEVELOPMENT ENGINEERING

COMMERCIAL SIDE SEWER CONNECTION WITH SAMPLING CONNECTION

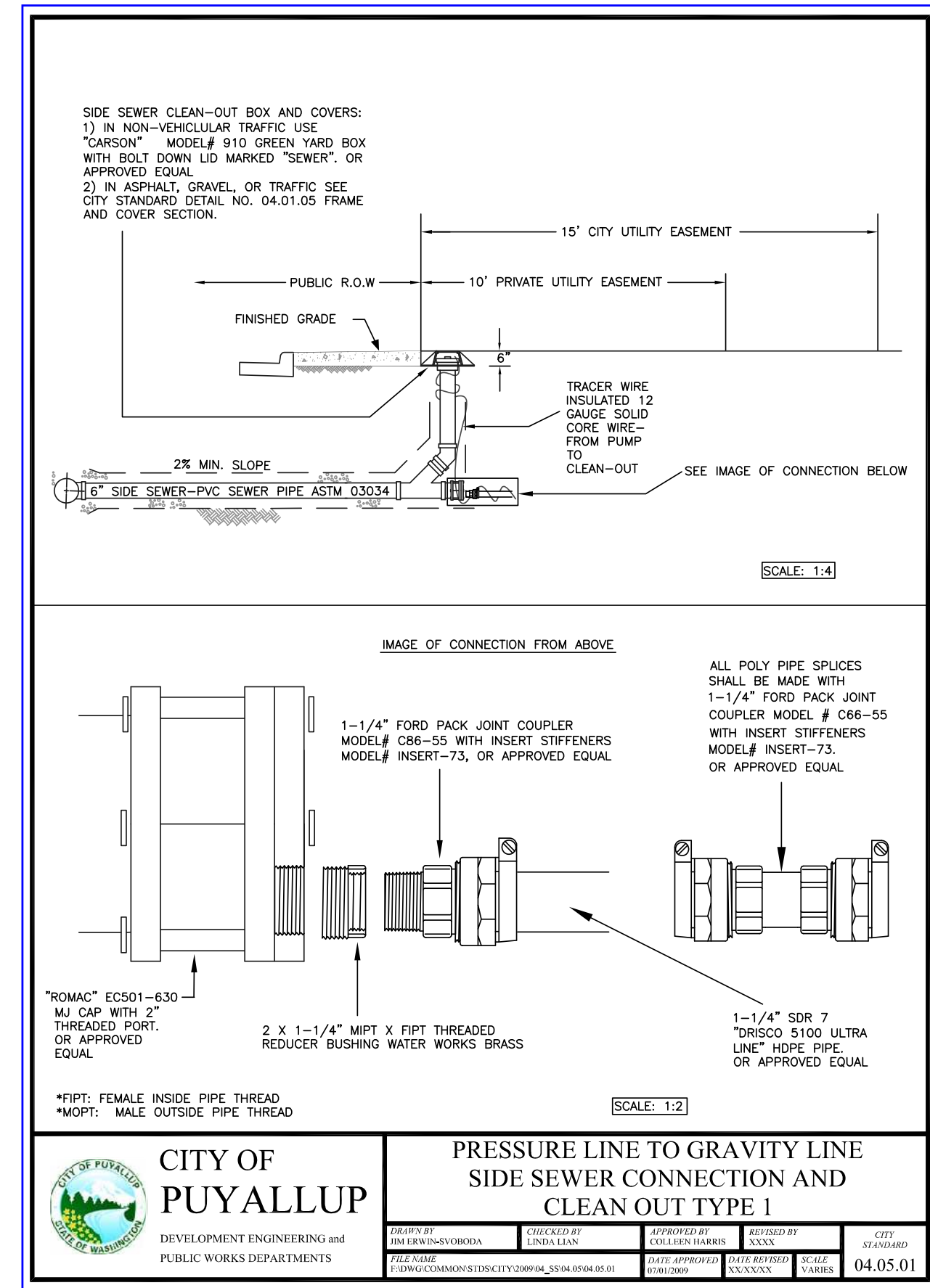
APPROVED FOR PUBLICATION

CITY STANDARD 04.03.04

(NOT TO SCALE)



Foam Pad Detail
1" = 2" C5-201



CITY OF PUYALLUP
DEVELOPMENT ENGINEERING AND PUBLIC WORKS DEPARTMENTS

PRESSURE LINE TO GRAVITY LINE SIDE SEWER CONNECTION AND CLEAN OUT TYPE I

APPROVED FOR PUBLICATION

CITY STANDARD 04.05.01

APPROVED

By: *Justin M. Jones*
CITY OF PUYALLUP
DEVELOPMENT ENGINEERING

DATE: 07/03/2024

NOTE: THIS APPROVAL IS VOID AFTER 180 DAYS FROM APPROVAL DATE. THE CITY WILL NOT BE RESPONSIBLE FOR ERRORS AND/OR OMISSIONS ON THESE PLANS. FIELD CONDITIONS MAY DICTATE CHANGES TO THESE PLANS AS DETERMINED BY THE DEVELOPMENT ENGINEERING MANAGER.

CALL TWO BUSINESS DAYS BEFORE YOU DIG

1-800-424-5555
UTILITIES UNDERGROUND LOCATION CENTER

Owner/Developer:
Washington STATE FAIR
PUYALLUP

Washington State Fair
110 9th Ave SW
Puyallup, WA 98371
(253) 841-5356

Architect:
Jeff Brown Architecture
12181 C Street South
Tacoma, WA 98444
(253) 606-8324
Contact: Jeff Brown

Engineer:
JVTEAM
Justin Jones, PE
905 Main St. Suite 200
Sumner, WA 98390
(206) 596-2020

Project:
WSF Gold Gate
Redevelopment

Civil Construction
Permit

ONE INCH AT FULL SCALE.
IF NOT, SCALE ACCORDINGLY

City of Puyallup
Development & Permitting Services
Building, Public Works, Engineering, Public Safety, Fire & Police Traffic

JUSTIN M. JONES
CITY OF WASHINGTON
41829
REGISTERED PROFESSIONAL ENGINEER
04/18/2024

REV	DATE	DESCRIPTION
1	03-04-24	City Comment Revision #1
2	04-18-24	City Comment Revision #2

DRAWN BY: DM DESIGN BY: JJ

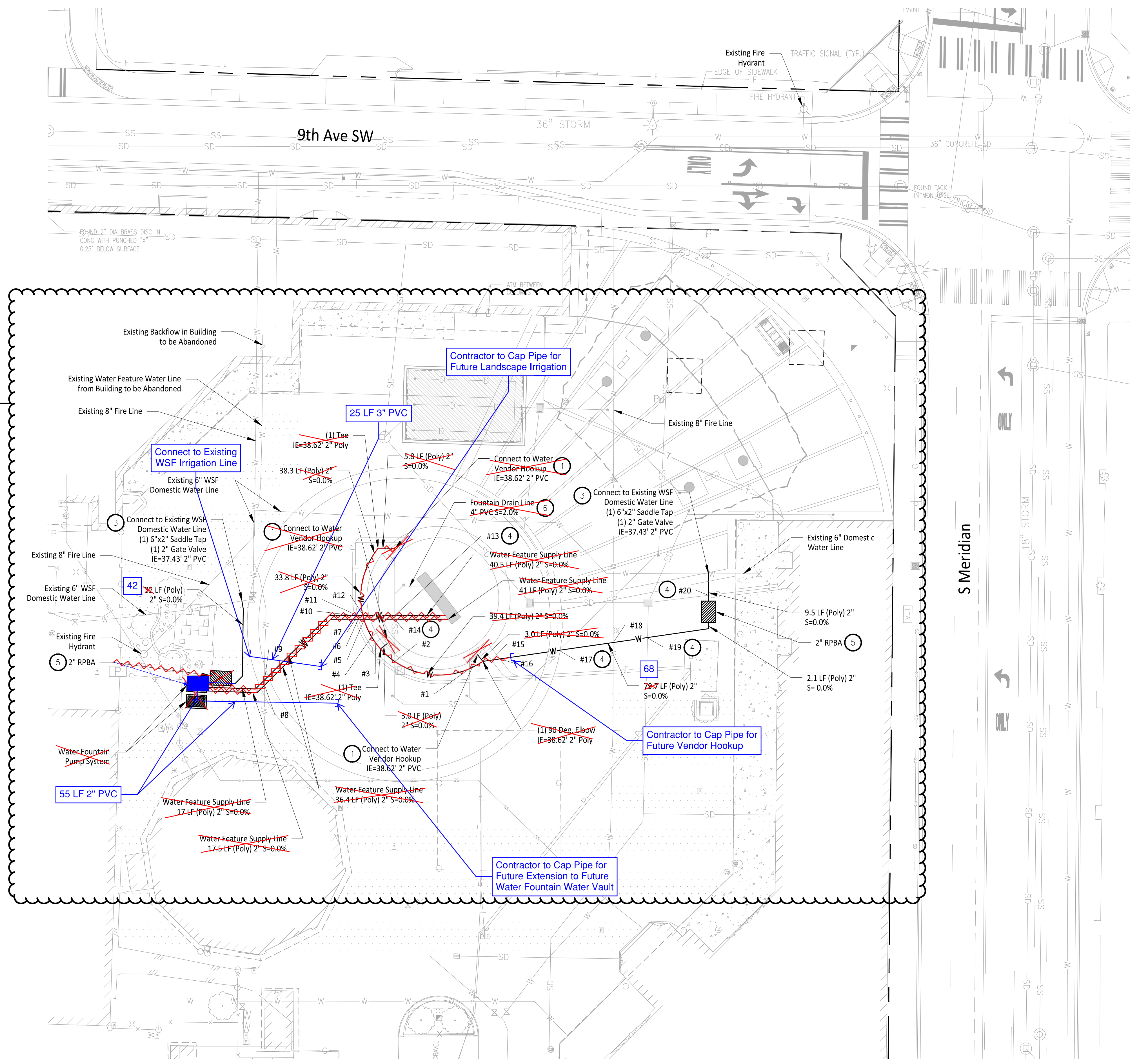
PROJ. NO: 1507-012
DATE: April 18, 2024

SHEET NAME: Sanitary Sewer Details

DWG. C5-201
23 of 27

File: 1507012C-UT-SSWB-DT.dwg Pbrt: JA1507 - Washington State Fair\1507-012_Gold Gate\CAD Plotted by: JMJ Date: 18-Apr-24 10:46:34am

File: 1507012C-UT-WTR.dwg Path: \\A:\1507 - Washington State Fair\1507-012 Gold Gate\CAO Plotted by: JMJ Date: 30-Apr-24 12:57:26pm



- ### CONSTRUCTION NOTES
- Domestic Water Service and Sanitary Sewer Vendor Hook Ups to be installed per Detail A on Sheet C6-201
 - Use Vertical Bends as Necessary to Install Water Pipe, Allowing Clearances from City of Puyallup Standard Details 03.01.03-1 & 03.01.03-2.
 - Wet Tap to be installed for Connection to Existing WSF Domestic Water Line per Detail B on Sheet C6-201.
 - Contractor to install foam pad between pipe crossings with less than 18" of vertical clearance. The pad shall be O.D. x O.D. x 2.5 inches thick minimum or as required to protect the pipes. Above O.D. is equal to the outside diameter of the larger pipe. The pad shall be a polyethylene foam plank (Dow Plastics Ethafoam 220), or approved equal. See Detail B on Sheet C5-201 for detail, and Sheet C6-201 for City of Puyallup Utility Crossing Standard Details.
 - Reduced Pressure Backflow Assembly to be installed Per City of Puyallup Standard Detail 03.04.02 on Sheet C6-202.
 - Fountain to drain to Sewer

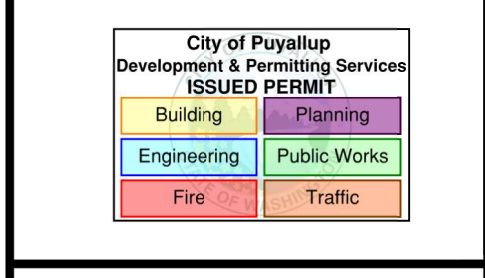
- ### GENERAL NOTES
- Contractor to Pothole, Locate Horizontal and Vertical Utilities and Verify with Engineer prior to any Utility Work.

Utility Crossing Table			
Intersection #	Above Crossing Line	Below Crossing Line	Material Vertical Separation (ft)
#1	2" Poly Water Pipe	6" PVC Sanitary Sewer Pipe	2.00
#2	2" Poly Water Pipe	6" PVC Sanitary Sewer Pipe	1.56
#3	2" Poly Water Pipe	Power Line	0.50
#4	2" Poly Water Pipe	Telecommunications Line	0.50
#5	2" Poly Water Pipe	2" Poly Water Pipe	0.50
#6	Telecommunications Line	2" Poly Water Pipe	0.50
#7	Power Line	2" Poly Water Pipe	0.50
#8	6" Cast Iron Water Pipe	2" Poly Water Pipe	0.50
#9	8" DI Stormwater Pipe	2" Poly Water Pipe	0.50
#10	Power Line	2" Poly Water Pipe	0.50
#11	Telecommunications Line	2" Poly Water Pipe	0.50
#12	2" Poly Water Pipe	2" Poly Water Pipe	0.50
#13	2" Poly Water Pipe	6" PVC Sanitary Sewer Pipe	1.26
#14	2" Poly Water Pipe	6" PVC Sanitary Sewer Pipe	1.23
#15	Power Line	2" Poly Water Pipe	0.50
#16	Telecommunications Line	2" Poly Water Pipe	0.50
#17	2" Poly Water Pipe	6" PVC Sanitary Sewer Pipe	1.37
#18	2" Poly Water Pipe	8" DI Fire Water Line	0.50
#19	2" Poly Water Pipe	8" PVC Stormwater Line	0.66
#20	2" Poly Water Pipe	8" PVC Stormwater Line	1.22

Owner/Developer:
Washington STATE FAIR
 PUYALLUP
 Washington State Fair
 110 9th Ave SW
 Puyallup, WA 98371
 (253) 841-5356
 Architect:
 Jeff Brown Architecture
 12181 C Street South
 Tacoma, WA 98444
 (253) 606-8324
 Contact: Jeff Brown
 Engineer:
JWTEAM
 Justin Jones, PE
 905 Main St. Suite 200
 Sumner, WA 98390
 (206) 596-2020

Project:
WSF Gold Gate Redevelopment
 Civil Construction Permit

ONE INCH AT FULL SCALE.
 IF NOT, SCALE ACCORDINGLY.



REV	DATE	DESCRIPTION
1	03-04-24	City Comment Revision #1
2	04-18-24	City Comment Revision #2

DRAWN BY: DM DESIGN BY: JJ
 PROJ. NO: 1507-012
 DATE: April 30, 2024
 SHEET NAME:

Water Plan
 DWG. **C6-101**
 24 OF 27

0 20 40 FEET
 1" = 20'

APPROVED
 BY: *Lucas D. Helgeson*
 CITY OF PUYALLUP
 DEVELOPMENT ENGINEERING
 DATE: 07/03/2024

NOTE: THIS APPROVAL IS VOID AFTER 180 DAYS FROM APPROVAL DATE. THE CITY WILL NOT BE RESPONSIBLE FOR ERRORS AND/OR OMISSIONS ON THESE PLANS. FIELD CONDITIONS MAY DICTATE CHANGES TO THESE PLANS AS DETERMINED BY THE DEVELOPMENT ENGINEERING MANAGER.

CALL TWO BUSINESS DAYS BEFORE YOU DIG
 1-800-424-5555
 UTILITIES UNDERGROUND LOCATION CENTER