

RECOMMENDED SIGN SPACING = X (1)		
RURAL ROADS & URBAN ARTERIALS	35-40 MPH	350' ±
RURAL ROADS & URBAN ARTERIALS RESIDENTIAL & BUSINESS DISTRICTS	25-30 MPH	200' ± (2)
URBAN STREETS	25 MPH OR LESS	100' ± (2)

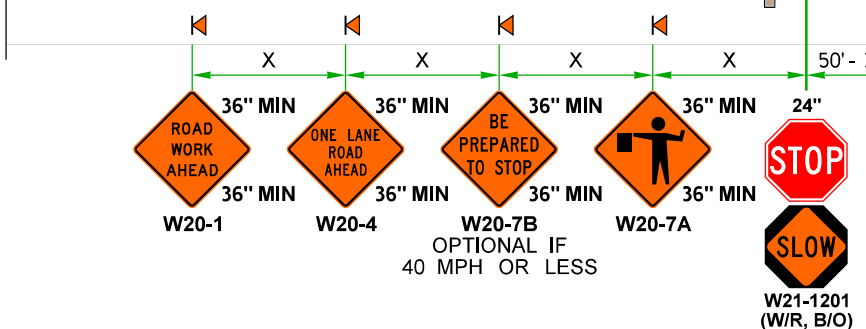
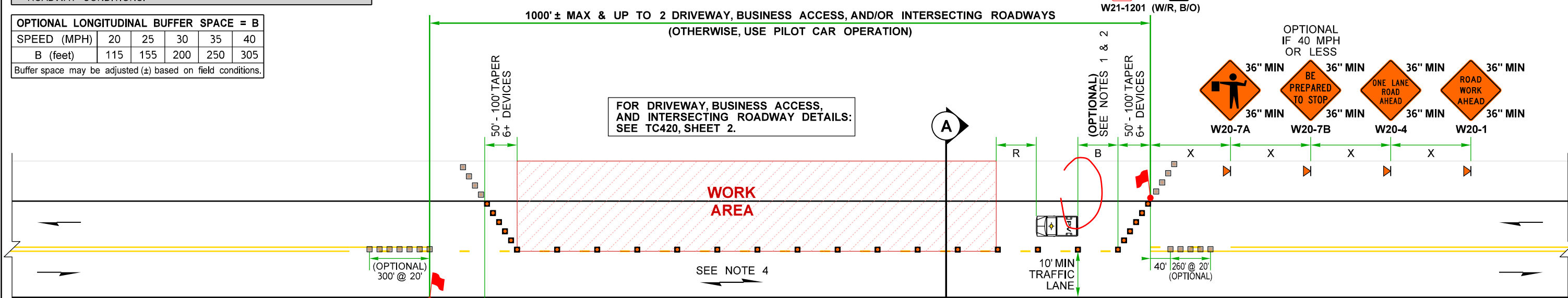
(1) ALL SPACING MAY BE ADJUSTED TO ACCOMMODATE INTERCHANGE RAMP, AT-GRADE INTERSECTIONS AND DRIVEWAYS.  
(2) THIS SPACING MAY BE REDUCED IN URBAN AREAS TO FIT ROADWAY CONDITIONS.

MAXIMUM CHANNELIZATION DEVICE SPACING (feet)		
MPH	TAPER	TANGENT
35 - 40	10 to 20	60
20 - 30	10 to 20	40

PROTECTIVE VEHICLE ROLL AHEAD DISTANCE = R  
STRATEGICALLY POSITION WORK VEHICLE TO PROTECT WORK CREW.  
40' - 80' RECOMMENDED.

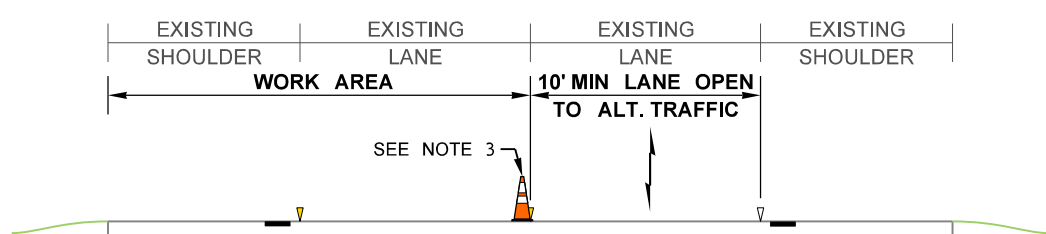
OPTIONAL LONGITUDINAL BUFFER SPACE = B					
SPEED (MPH)	20	25	30	35	40
B (feet)	115	155	200	250	305

Buffer space may be adjusted (±) based on field conditions.



**LEGEND:**

- TEMPORARY SIGN LOCATION
- 28" REFLECTIVE TRAFFIC CONE (SEE NOTE 3)
- OPTIONAL CHANNELIZATION DEVICE
- PROTECTIVE VEHICLE (SEE NOTE 2)
- FLAGGER



- NOTES:**
- AVOID PLACING LANE CLOSURE TAPERS WITHIN OR IMMEDIATELY FOLLOWING HORIZONTAL & VERTICAL CURVES BY ADJUSTING LONGITUDINAL BUFFER SPACE.
  - PROTECTIVE VEHICLE MAY ALWAYS BE USED ON ROADWAYS 40 MPH OR LESS, EVEN IF THE LONGITUDINAL BUFFER SPACE IS REDUCED OR ELIMINATED. ADDITIONAL PVs MAY BE ADDED AT SEPARATE WORK CREWS.
  - MAY SHIFT LATERALLY. 36" TRAFFIC CONES, 42" TALL CHANNELIZATION DEVICES, OR TRAFFIC SAFETY DRUMS OK.
  - PEDESTRIAN & BICYCLIST ACCOMMODATIONS (ENGINEER TO ACCEPT ANY ALTERNATIVE STRATEGIES):  
(A) ALLOW PEDESTRIANS TO USE THE PAVED SHOULDER OR ADJACENT PATH OPPOSITE THE WORK AREA  
(B) COMBINE BIKES & VEHICULAR TRAFFIC. BIKES TO CLEAR PRIOR TO RELEASING ONCOMING TRAFFIC  
(C) PROVIDE FREE SHUTTLE (WORK TRUCK, VAN, OR BUS MAY BE USED)
  - SEE STANDARD SPECIFICATIONS FOR ADDITIONAL REQUIREMENTS:  
1-07.8(1) HIGH-VISIBILITY APPAREL  
1-10.3(1)A FLAGGERS AND NIGHTTIME ILLUMINATION  
1-10.3(2)A TRAFFIC CONTROL PROCEDURES  
9-35.1 24-INCH STOP/SLOW PADDLE SIZE
  - FOR PROJECT-SPECIFIC REQUIREMENTS, SEE SPECIAL PROVISIONS.
  - SIGNS ARE BLACK ON ORANGE UNLESS OTHERWISE INDICATED.
  - ACTUAL CENTERLINE PAVEMENT MARKINGS MAY VARY.

**ALTERNATING 1-LANE, 2-WAY TRAFFIC: FLAGGER-CONTROLLED  
(HIGHWAYS, 40 MPH OR LESS)  
NOT TO SCALE**

FILE NAME	C:\Users\LintzF\OneDrive - Washington State Department of Transportation\Desktop\Work Zone TCPs\420Hwy40-AltTrafficFlagger.dgn				Plot 1
TIME	6:58:21 AM				PLAN REF NO
DATE	7/18/2023				TC420
PLOTTED BY	LintzF				SHEET 1 OF 4 SHEETS
DESIGNED BY					
ENTERED BY					TYPICAL TRAFFIC CONTROL PLANS
CHECKED BY					
PROJ. ENGR.					
REGIONAL ADM.	REVISION	DATE	BY	LOCATION NO.	