

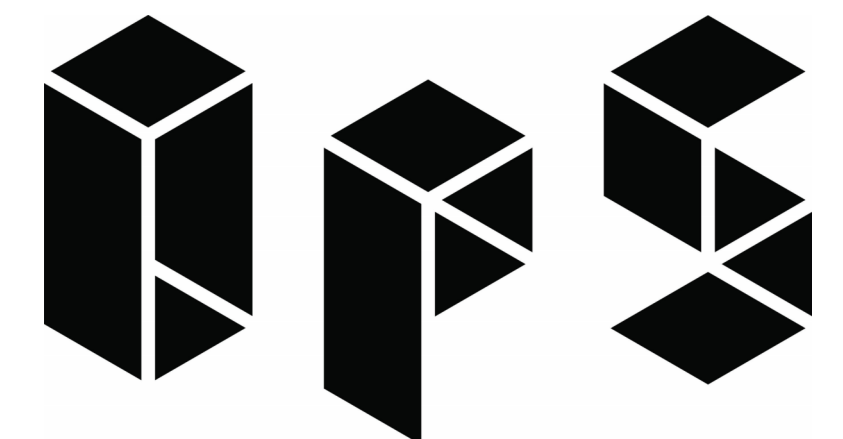


City of Puyallup Development & Permitting Services ISSUED PERMIT	
Building	Planning
Engineering	Public Works
Fire	Traffic

PAC REMEMBRANCE GALLERY

110 9TH AVENUE SW
PUYALLUP, WA 98371

CONSTRUCTION DOCUMENTS
JULY 8, 2024



OKANO PICARD STUDIO

ABBREVIATIONS table with columns for symbol and description. Includes items like AT DIAMETER, GALV GENERAL CONTRACTOR, GLASS SOLID CORE, etc.

ABBREVIATIONS table with columns for symbol and description. Includes items like BOARD BITUMINOUS, BUILDING BLOCKING, BEAM BOTTOM OF, etc.

ABBREVIATIONS table with columns for symbol and description. Includes items like CABINET CATCH BASIN, CEMENT CERAMIC, CAST-IN-PLACE, etc.

ABBREVIATIONS table with columns for symbol and description. Includes items like DOUBLE DEMOLITION, DETAIL DIAMETER, DIMENSION, etc.

ABBREVIATIONS table with columns for symbol and description. Includes items like NORTH DOWN, NOT APPLICABLE, NUMBER, etc.

ABBREVIATIONS table with columns for symbol and description. Includes items like OVERALL ON CENTER, OUTSIDE DIAMETER, OFFICE, etc.

ABBREVIATIONS table with columns for symbol and description. Includes items like PARTICLE BOARD PRECAST CONCRETE, POUNDS PER CUBIC FOOT, etc.

ABBREVIATIONS table with columns for symbol and description. Includes items like RISER RETURN AIR, RADIUS, ROOF DRAIN, etc.

ABBREVIATIONS table with columns for symbol and description. Includes items like GAUGE GALVANIZED, GENERAL CONTRACTOR, GLASS SOLID CORE, etc.

ABBREVIATIONS table with columns for symbol and description. Includes items like HOSE BIB HOLLOW CORE, HIGH DENSITY OVERLAY, HEADER HARDWOOD, etc.

ABBREVIATIONS table with columns for symbol and description. Includes items like LAMINATE LAMINATED, LAVATORY LAVATORY, LBS POUNDS, etc.

ABBREVIATIONS table with columns for symbol and description. Includes items like NORTH DOWN, NOT APPLICABLE, NUMBER, etc.

ABBREVIATIONS table with columns for symbol and description. Includes items like OVERALL ON CENTER, OUTSIDE DIAMETER, OFFICE, etc.

ABBREVIATIONS table with columns for symbol and description. Includes items like PARTICLE BOARD PRECAST CONCRETE, POUNDS PER CUBIC FOOT, etc.

ABBREVIATIONS table with columns for symbol and description. Includes items like RISER RETURN AIR, RADIUS, ROOF DRAIN, etc.

ABBREVIATIONS table with columns for symbol and description. Includes items like SOUTH SELF-ADHERED FLASHING, SELF-ADHERED MEMBRANE, SOLID CORE, etc.

ABBREVIATIONS table with columns for symbol and description. Includes items like TREAD TONGUE AND GROOVE, TELEPHONE TERRAZZO, TEMPERED GLASS, etc.

ABBREVIATIONS table with columns for symbol and description. Includes items like UNLESS NOTED OTHERWISE, VINYL BASE, VENEER, etc.

ABBREVIATIONS table with columns for symbol and description. Includes items like WEST WITH, WITHOUT, WATER CLOSET, etc.

ABBREVIATIONS table with columns for symbol and description. Includes items like WINDOW WINDOW, WIDE FLANGE, WIDE FLANGE BEAM, etc.

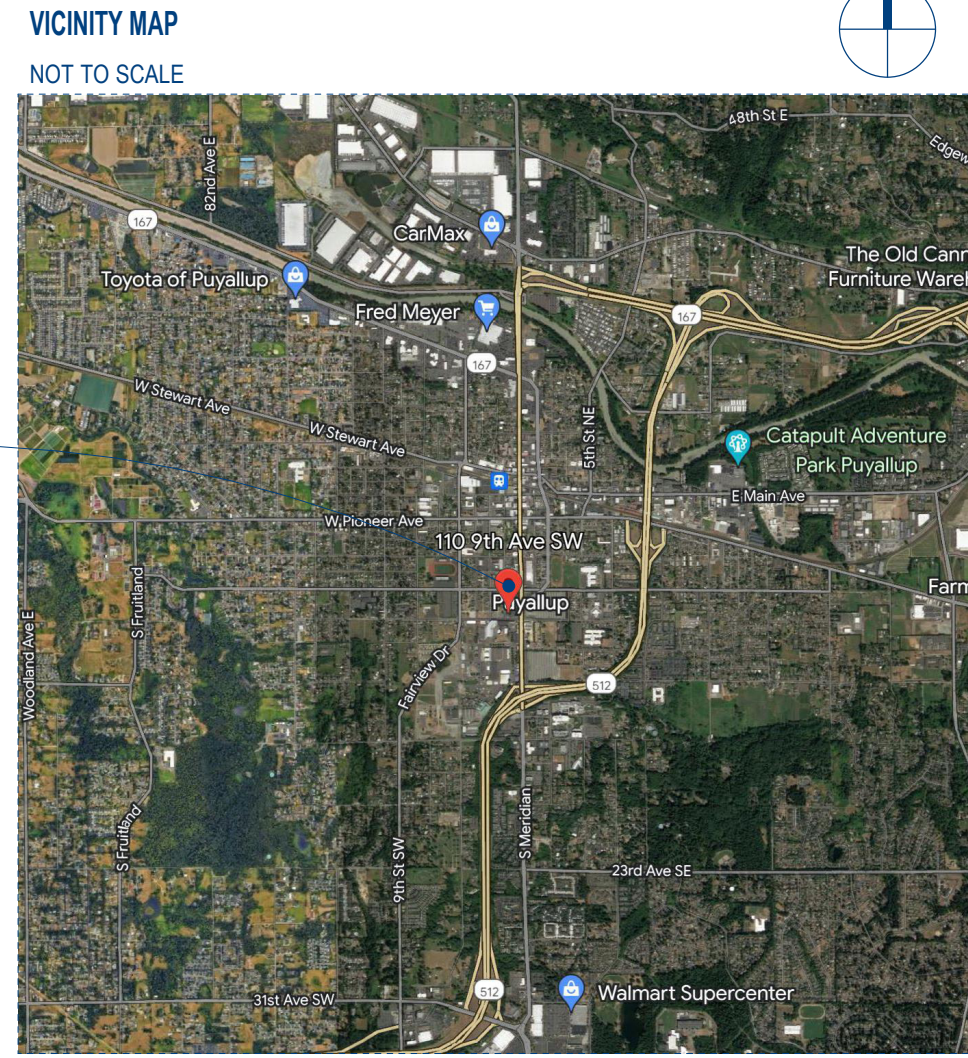
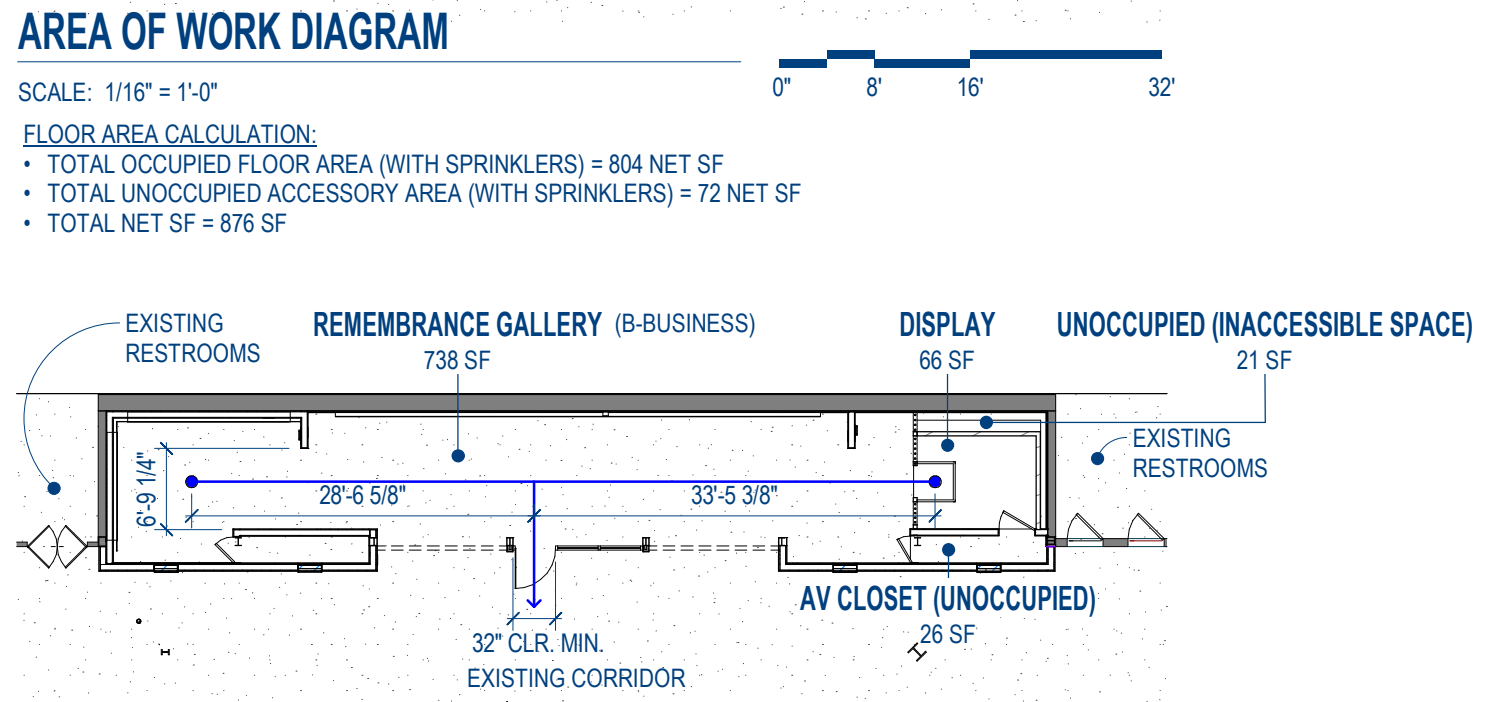
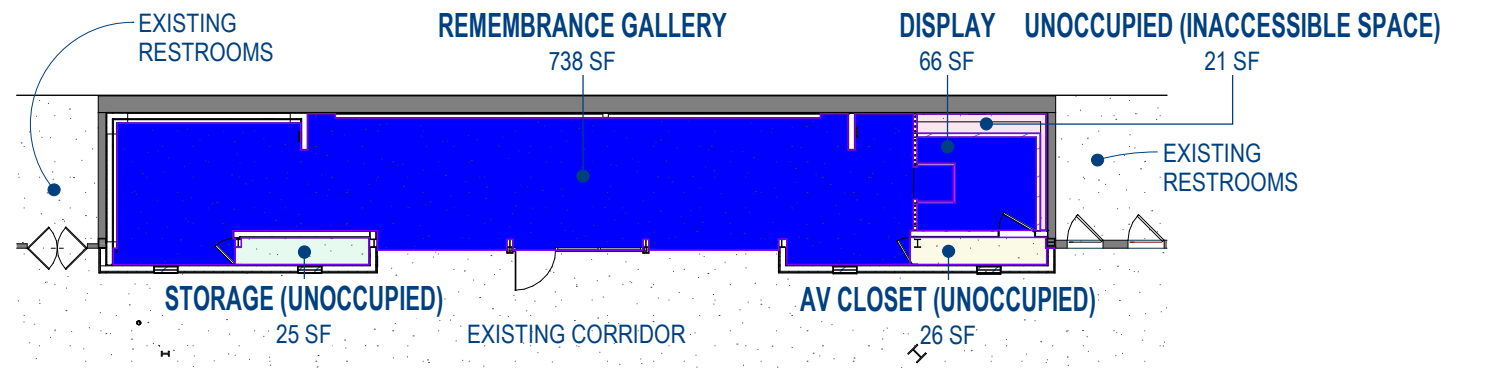
ABBREVIATIONS table with columns for symbol and description. Includes items like WOOD BLOCKING (SHIM), FINISHED WOOD, BATT INSULATION, etc.

GENERAL SYMBOLS LEGEND table showing symbols for grid lines, levels, exterior elevations, interior elevations, building sections, wall sections, detail sections, callouts, revisions, room references, and assembly references.

GENERAL SYMBOLS LEGEND table showing symbols for room names and materials.

GENERAL SYMBOLS LEGEND table showing symbols for materials like wood blocking, finished wood, batt insulation, gravel, aluminum, masonry, wood framing, plywood, rigid insulation, earth, steel, and brick.

MATERIALS LEGEND table showing symbols for wood blocking, finished wood, batt insulation, gravel, aluminum, masonry, wood framing, plywood, rigid insulation, earth, steel, and brick.



ZONING / BUILDING CODE SUMMARY table with columns for PHYSICAL ADDRESS, ASSESSOR'S PARCEL NUMBER, LEGAL DESCRIPTION, PROJECT DESCRIPTION, APPLICABLE CODES, LOT SIZE, LAND USE DESCRIPTION, TYPE OF CONSTRUCTION, EXISTING OCCUPANCY, OCCUPANT LOAD, SPACES WITH ONE EXIT, MAXIMUM COMMON PATH OF EGRESS TRAVEL, EXIT ACCESS TRAVEL DISTANCE, and MEANS OF EGRESS SIZING.

GENERAL NOTES table with 5 numbered items regarding codes, dimensions, conditions, rough-in dimensions, and exterior face of concrete/wood/metal framing.

PROJECT DIRECTORY table with columns for OWNER, ARCHITECT, EXPERIMENTAL DESIGN, EXHIBIT MANAGEMENT, CONTRACTOR, and AUDIO VISUAL.

SHEET INDEX table with columns for SHEET NO., SHEET NAME, and SHEET ISSUE DATE. Lists sheets A010 through A701.

Walls were covered prior to permit or inspection, contractor verify insulation is installed per plans. Verify with field inspector. Call for Building Comment inspection prior to commencing construction. This inspection will release the Stop Work.

Must have full sized issued plans, on-site and printed in color for all inspections.

PRCTI20241103

City of Puyallup Building REVIEWED FOR COMPLIANCE stamp with RayC signature, date 07/15/2024, and time 3:58:21 PM.

REVISIONS table with columns for NO., DATE, DESCRIPTION, and BY. Lists revisions 1 through 3.

OKANO PICARD STUDIO logo and address: 815 SEATTLE BLVD. S., SEATTLE, WA 98134 USA. Includes phone and email.

FIRE NOTES section with text: Read Permit Conditions prior to calling for inspection. Separate Permits required.

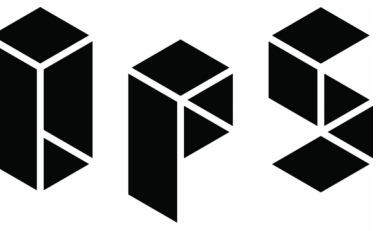
City of Puyallup Development & Permitting Services ISSUED PERMIT logo with categories: Building, Planning, Engineering, Public Works, Fire, Traffic.

PROJECT: PAC REMEMBRANCE GALLERY. 110 9TH AVENUE SW, PUYALLUP, WA 98371. PROJECT ARCHITECT: YO. DRAWN BY: YO.LJ. JOB NUMBER: 2214.

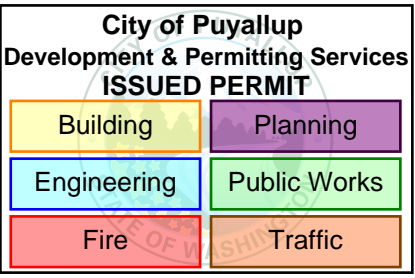
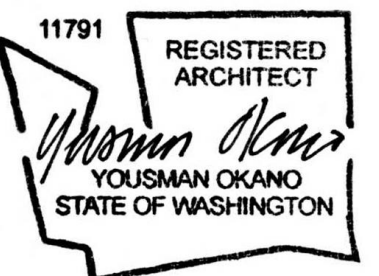
CONSTRUCTION DOCUMENTS JULY 8, 2024

GENERAL INFORMATION

A000



OKANO PICARD STUDIO
 815 SEATTLE BLVD. S., SEATTLE, WA 98134 USA
 T:206.856.9955 E:info@OkanoPicardStudio.com

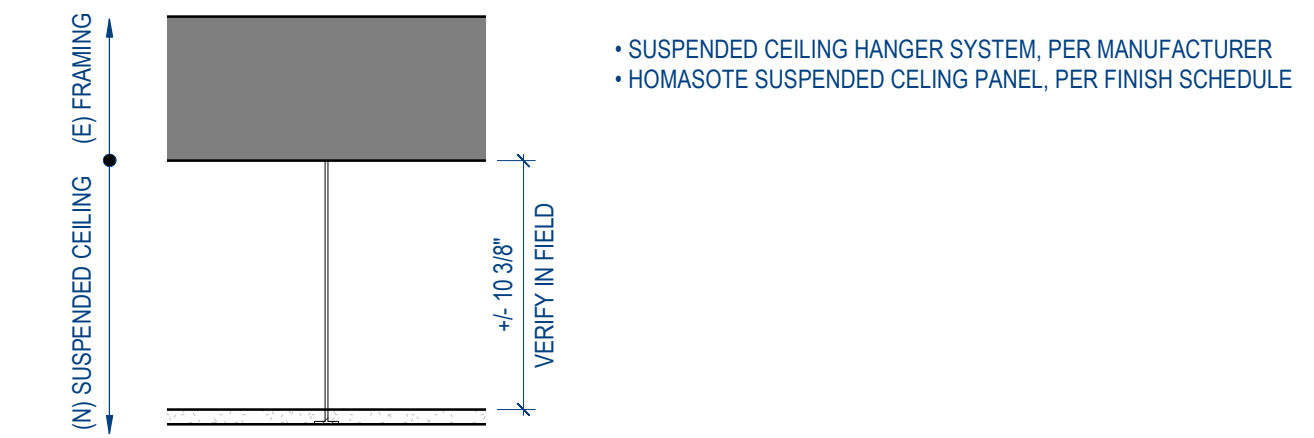


PROJECT:
PAC REMEMBRANCE GALLERY
 110 9TH AVENUE SW
 PUYALLUP, WA 98371

PROJECT ARCHITECT: YO
 DRAWN BY: YO,LJ
 JOB NUMBER: 2214

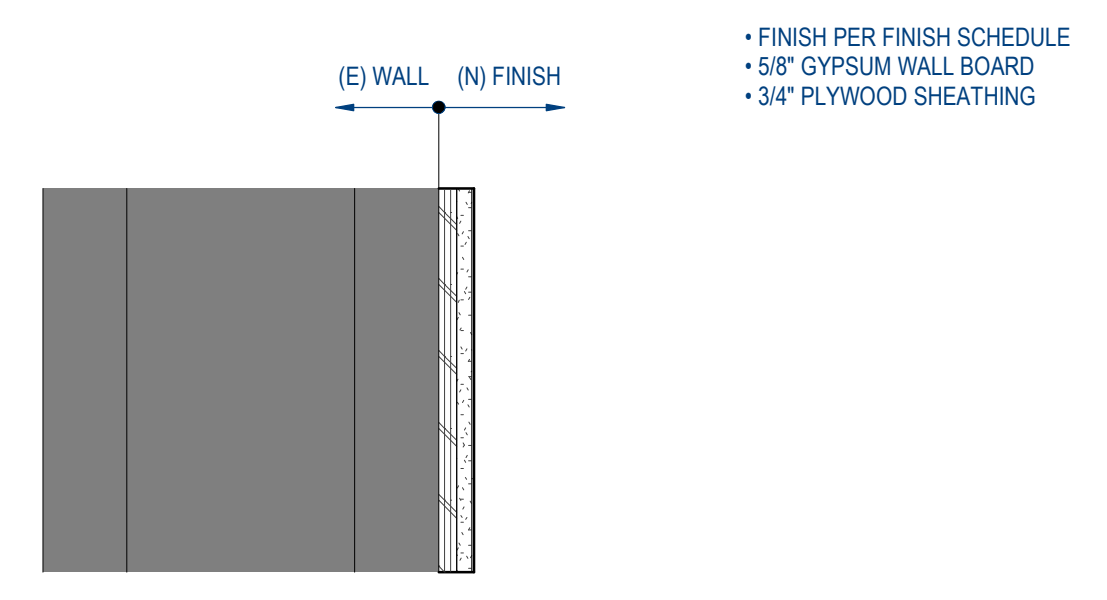
PROJECT STATUS:

CONSTRUCTION DOCUMENTS
JULY 8, 2024



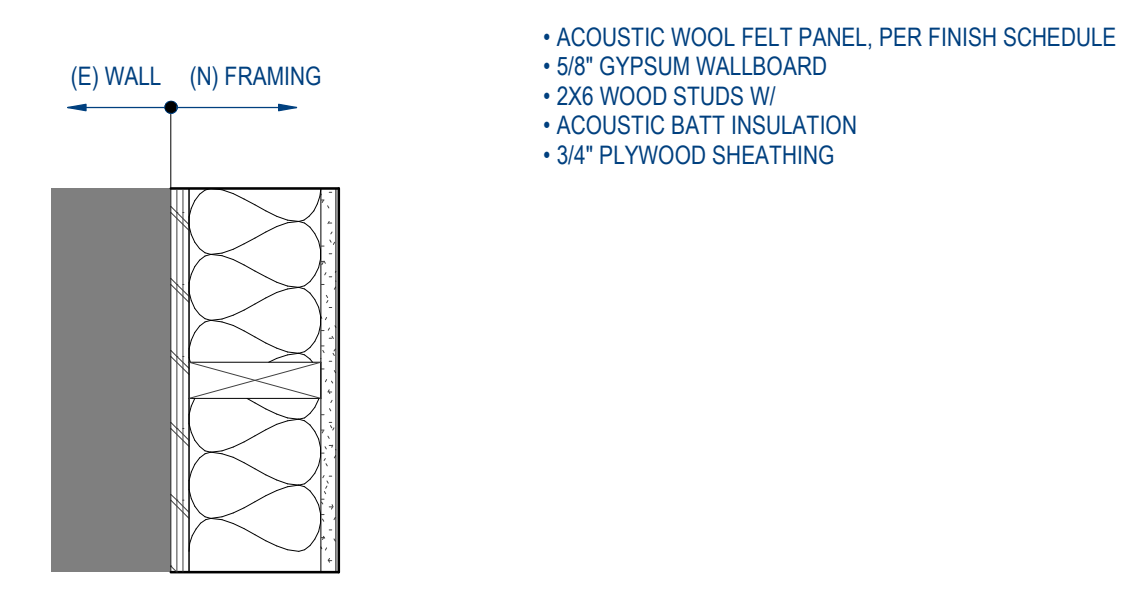
C1 ENTER CEILING ASSEMBLY NAME

CEILING ASSEMBLIES



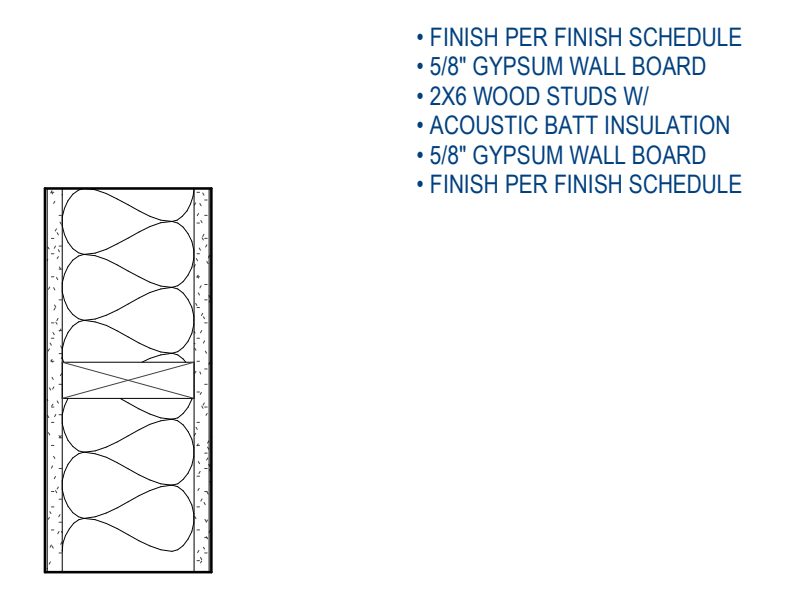
- FINISH PER FINISH SCHEDULE
- 5/8" GYPSUM WALL BOARD
- 3/4" PLYWOOD SHEATHING

P3 TYPICAL GYPSUM WALL BOARD ASSEMBLY



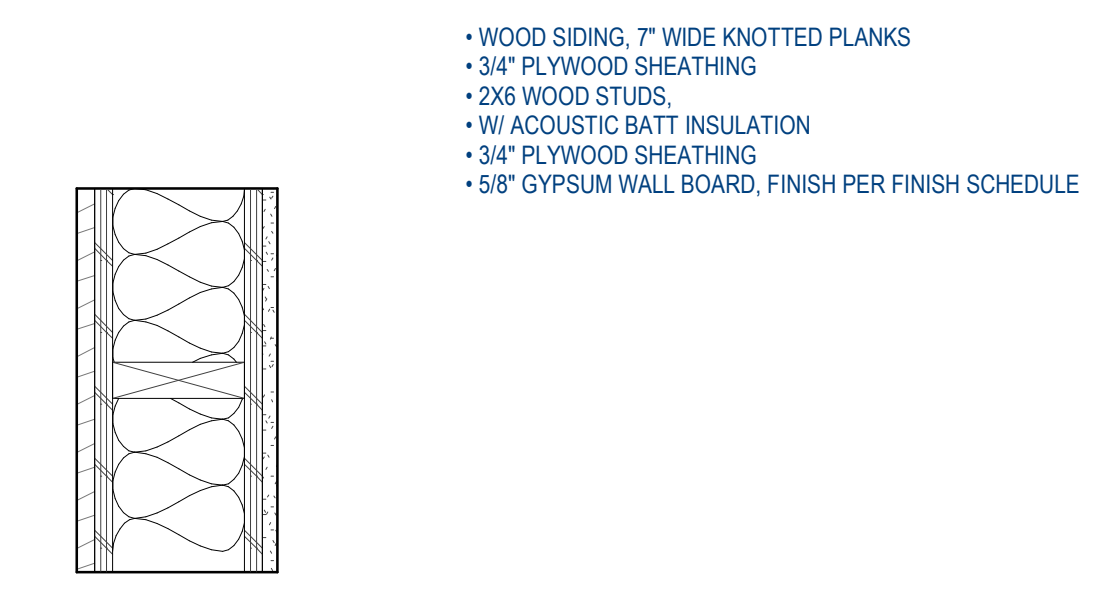
- ACOUSTIC WOOL FELT PANEL, PER FINISH SCHEDULE
- 5/8" GYPSUM WALLBOARD
- 2X6 WOOD STUDS W/
- ACOUSTIC BATT INSULATION
- 3/4" PLYWOOD SHEATHING

P2 WOOL FELT WALL



- FINISH PER FINISH SCHEDULE
- 5/8" GYPSUM WALL BOARD
- 2X6 WOOD STUDS W/
- ACOUSTIC BATT INSULATION
- 5/8" GYPSUM WALL BOARD
- FINISH PER FINISH SCHEDULE

P1 PARTITION WALL @ MONUMENT



- WOOD SIDING, 7" WIDE KNOTTED PLANKS
- 3/4" PLYWOOD SHEATHING
- 2X6 WOOD STUDS
- W/ ACOUSTIC BATT INSULATION
- 3/4" PLYWOOD SHEATHING
- 5/8" GYPSUM WALL BOARD, FINISH PER FINISH SCHEDULE

W1 CONFINEMENT WOOD WALL

PARTITION & FINISH WALL ASSEMBLIES

EXTERIOR WALL ASSEMBLIES

NO.	DATE	DESCRIPTION	BY
3	05/23/24	Plan Rev.	OPS
2	04/25/24	Plan Rev.	OPS
1	03/05/24	BWCs Rev	OPS

REVISIONS:

SHEET TITLE:

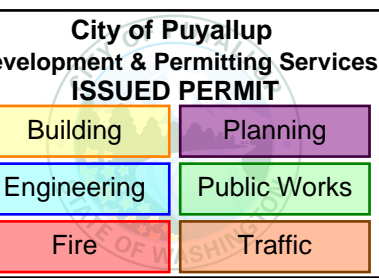
ASSEMBLIES

SHEET NUMBER:

A010



OKANO PICARD STUDIO
815 SEATTLE BLVD. S., SEATTLE, WA 98134 USA
T:206.456.9955 E:info@OkanoPicardStudio.com



PROJECT:
PAC REMEMBRANCE GALLERY
110 9TH AVENUE SW
PUYALLUP, WA 98371

PROJECT ARCHITECT: YO
DRAWN BY: YO,LJ
JOB NUMBER: 2214

PROJECT STATUS:

CONSTRUCTION DOCUMENTS
JULY 8, 2024

2 05/23/24 Pat Rev. OPS
1 08/14/23 BWCs Rev OPS
NO. DATE DESCRIPTION BY:

REVISIONS:

SHEET TITLE:

SCHEDULES

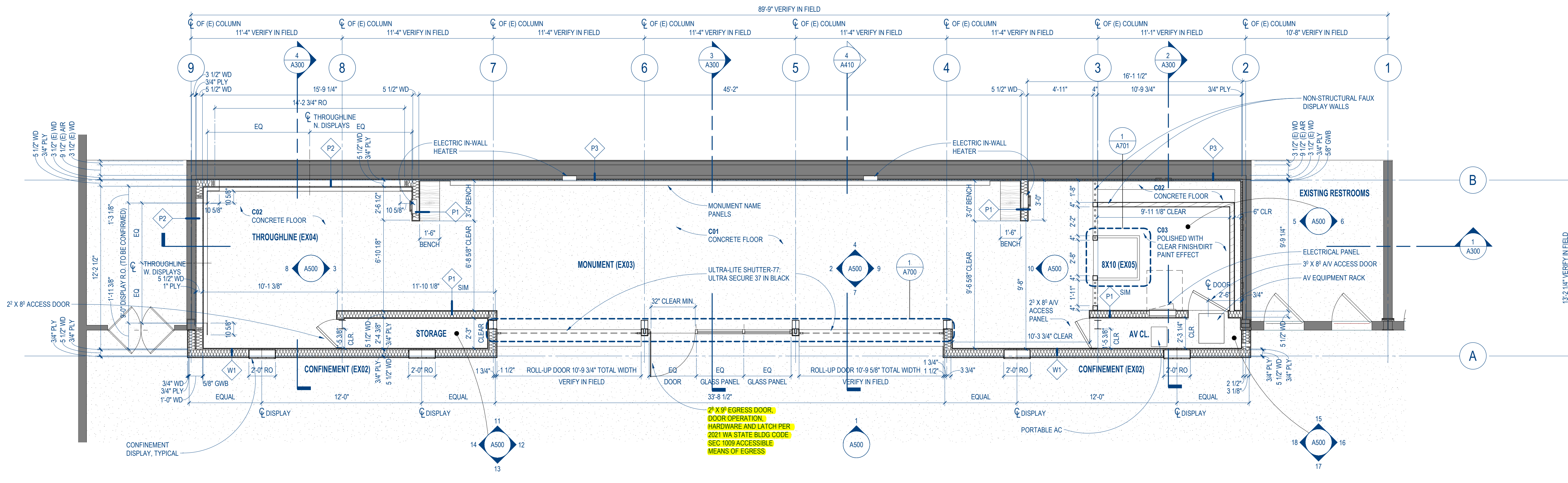
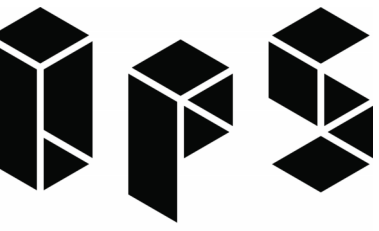
SHEET NUMBER:

A020

EXHIBIT COMPONENT LIST

Remembrance Gallery: *Finish Schedule*

Exhibit #	Exhibit Zone	Exhibit Name	Finish Location	Finish Location #	Finish #	Material	Finish	Specification	Note	Thumbnail
	All Interior	-	Ceiling	EX00.01	MISC01	Homocote panel	Dark gray	-	-	
EX01	Exterior Facade	-	Upper band sign	EX01.01	W01	MDF	Faux-concrete	-	Applied graphic / Applied dimensional letters	
	Exterior Facade	-	Upper band sign, dimensional letters	EX01.02	M01	Aluminum	Matte, dark gray	-	-	
EX02	Confinement	Confinement	Barrack facade recreation, roof	EX02.01	MISC02	Felt roofing paper	Charcoal or black / Aged patina (6 months)	-	-	
	Confinement	Confinement	Barrack facade recreation, wood siding	EX02.02	W02	Wood	Cedar or similar / Aged patina (6 months)	7" wide knotted planks	Enclosed AV	
	Confinement	Confinement	Barrack facade recreation, window frame	EX02.03	M02	Steel	Match historical photos / Aged patina (6 months)	Industrial sash period windows, 9 sections	Enclosed AV	
	Confinement	Confinement	Barrack facade recreation, window pane	EX02.04	MISC03	Tempered glass	Clear	-	Enclosed AV	
EX03	Monument	-	North wall	EX03.01	D01	Dry-wall substrate	Veneffon-plaster finish / Light, warm neutral	-	Mounted name panels	
	Monument	-	East wall	EX03.02	D01	Dry-wall substrate	Veneffon-plaster finish / Light, warm neutral	-	Mounted interpretive panel	
	Monument	-	West wall	EX03.03	D01	Dry-wall substrate	Veneffon-plaster finish / Light, warm neutral	-	Mounted interpretive panel	
	Monument	-	Floor	EX03.04	C01	Concrete	Polished with clear finish	Grind to expose aggregate, Kimsul treatment within cracks.	-	
	Monument	-	Bench, seat	EX03.05	W03	Wood	Cedar or similar	-	-	
	Monument	-	Bench, kick	EX03.06	M01	Aluminum	Matte, dark gray	-	-	
EX04	Throughline	-	North wall	EX04.01	MISC04	Acoustic wool felt panel	-	Felt Right wall tile, Jasper (or similar warm medium to dark gray)	Mounted AV	
	Throughline	-	East wall	EX04.02	MISC04	Acoustic wool felt panel	-	Felt Right wall tile, Jasper (or similar warm medium to dark gray)	Mounted donor recognition panel	
	Throughline	-	West wall	EX04.03	MISC04	Acoustic wool felt panel	-	Felt Right wall tile, Jasper (or similar warm medium to dark gray)	Mounted AV	
	Throughline	Timeline wall	South wall 1	EX04.04	D02	Dry-wall substrate	-	Level 5, primed with Roman PRO-977 ULTRA PRIME	Applied wallpaper / Mounted interpretive panels	
	Throughline	-	South wall, bump out	EX04.05	D03	Dry-wall substrate	Matte paint, Benjamin Moore Backout Brown CW-180 (or similar dark brown)	-	Door to storage	
	Throughline	Exhibit introduction wall	South wall 2	EX04.06	D04	Dry-wall substrate	Matte paint, Benjamin Moore Simply White (or similar warm white)	Level 5, primed with Roman PRO-977 ULTRA PRIME	Applied graphic / Mounted interpretive panels	
	Throughline	-	South wall 2, vaulted ceiling	EX04.07	D04	Dry-wall substrate	Matte paint, Benjamin Moore Simply White (or similar warm white)	Level 5, primed with Roman PRO-977 ULTRA PRIME	Applied graphic	
	Throughline	-	Floor	EX04.08	C02	Concrete	Polished with clear finish	-	-	
	Throughline	Interactive Stations	North wall, interactive screen enclosure	EX04.09	M01	Aluminum	Matte, dark gray	-	Enclosed AV	
	Throughline	Interactive Stations	West wall, interactive screen enclosure	EX04.10	M01	Aluminum	Matte, dark gray	-	Enclosed AV	
EX05	8x10	8x10 Interpretive Wall	North wall	EX05.01	D02	Dry-wall substrate	-	Level 5, primed with Roman PRO-977 ULTRA PRIME	Applied wallpaper / Mounted interpretive panel	
	8x10	-	East wall	EX05.02	D03	Dry-wall substrate	Matte paint, Benjamin Moore Backout Brown CW-180 (or similar dark brown)	-	-	
	8x10	-	West wall 1, adjacent to North Wall	EX05.03	D05	Dry-wall substrate	Matte paint, Benjamin Moore Gray Garden (or similar warm medium to dark gray)	-	Mounted AV	
	8x10	Living Conditions Interpretive Wall	South wall	EX05.04	D02	Dry-wall substrate	-	Level 5, primed with Roman PRO-977 ULTRA PRIME	Applied wallpaper / Mounted interpretive panels	
	8x10	-	West wall 2, adjacent to South Wall	EX05.12	D03	Dry-wall substrate	Matte paint, Benjamin Moore Backout Brown CW-180 (or similar dark brown)	-	-	
	8x10	-	Floor	EX05.05	C02	Concrete	Polished with clear finish	-	-	
	8x10	Horse Stall Recreation	Horse Stall Recreation, north wall	EX05.06	D03	Dry-wall substrate	Matte paint, Benjamin Moore Backout Brown CW-180 (or similar dark brown)	-	-	
	8x10	Horse Stall Recreation	Horse Stall Recreation, east wall	EX05.07	D03	Dry-wall substrate	Matte paint, Benjamin Moore Backout Brown CW-180 (or similar dark brown)	-	-	
	8x10	Horse Stall Recreation	Horse Stall Recreation, south wall	EX05.08	D03	Dry-wall substrate	Matte paint, Benjamin Moore Backout Brown CW-180 (or similar dark brown)	-	-	
	8x10	Horse Stall Recreation	Horse Stall Recreation, facade and walls	EX05.09	W04	Wood	Match historical photos (worn, dirty white paint) / Aged patina (6 months)	Match historical photos (rough sawn)	-	
	8x10	Horse Stall Recreation	Horse Stall Recreation, floor	EX05.10	C03	Concrete	Polished with clear finish / Dirt paint effect	Grind to expose aggregate	-	
	8x10	Horse Stall Recreation	Horse Stall Recreation, stanchions	EX05.11	M01	Aluminum	Matte, dark gray	-	-	

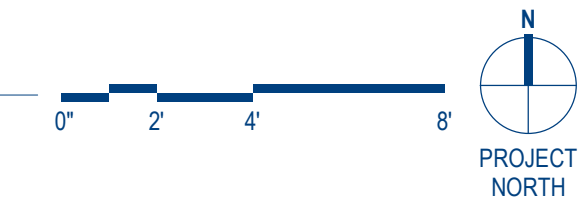


2 MAIN LEVEL FLOOR PLAN

SCALE: 1/4" = 1'-0"

FLOOR PLAN LEGEND

- EXISTING CONSTRUCTION TO REMAIN
- NEW CONSTRUCTION



City of Puyallup
Development & Permitting Services
ISSUED PERMIT

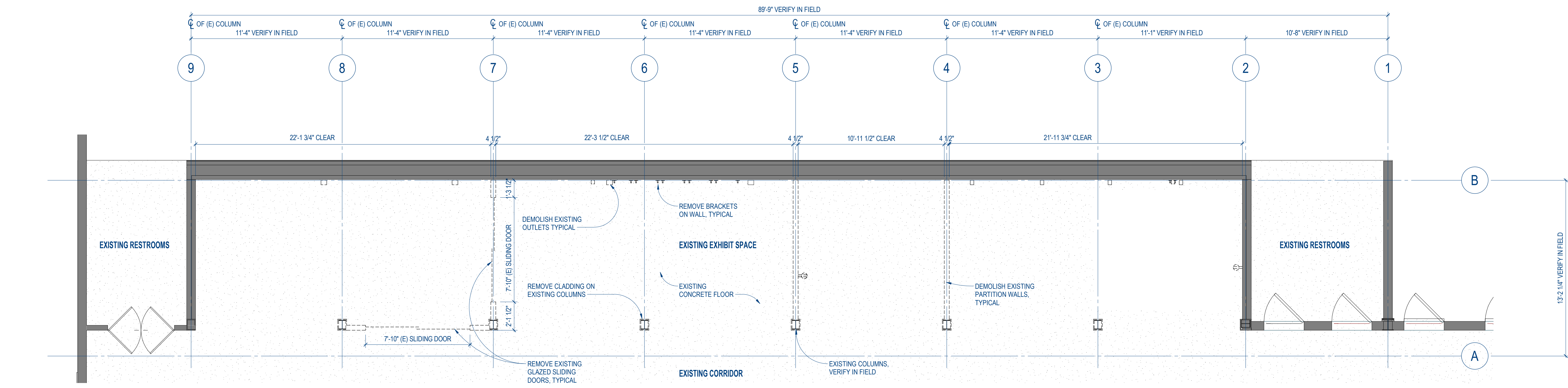
Building	Planning
Engineering	Public Works
Fire	Traffic

PROJECT:
PAC REMEMBRANCE GALLERY
110 9TH AVENUE SW
PUYALLUP, WA 98371

PROJECT ARCHITECT: YO
DRAWN BY: YOLJ
JOB NUMBER: 2214

PROJECT STATUS:

**CONSTRUCTION DOCUMENTS
JULY 8, 2024**



1 MAIN LEVEL DEMOLITION PLAN

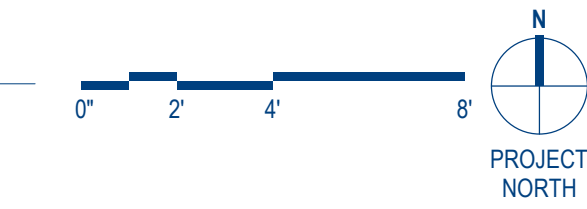
SCALE: 1/4" = 1'-0"

DEMOLITION FLOOR PLAN LEGEND

- EXISTING CONSTRUCTION TO REMAIN
- EXISTING CONSTRUCTION TO BE DEMOLISHED

DEMOLITION PLAN GENERAL NOTES:

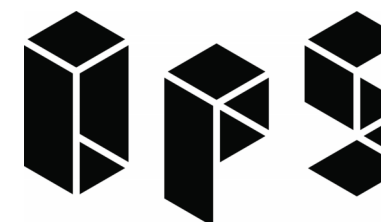
- CONTRACTOR SHALL NOTIFY THE ARCHITECT IMMEDIATELY IF DEMOLITION UNCOVERS ANY UNFORSEEN OR CONCEALED CONDITIONS
- ALL DIMENSIONS ARE APPROXIMATE. CONTRACTOR SHALL VERIFY ALL DIMENSIONS AND CONDITIONS PRIOR TO INITIATING THE WORK AND NOTIFY THE ARCHITECT IMMEDIATELY IF ANY CONFLICTS OR DISCREPANCIES EXIST.
- IN ADDITION TO THE DEMOLITION SPECIFICALLY SHOWN, CONTRACTOR SHALL CUT, MOVE OR REMOVE ITEMS AS NECESSARY TO PROVIDE ACCESS OR TO ALLOW ALTERATIONS AND WORK TO PROCEED INCLUDING ITEMS SUCH AS RE-ROUTING OF EXISTING UTILITIES, REMOVAL OF ABANDONED ITEMS AND REMOVAL OF DEBRIS SUCH AS ROTTED WOOD, RUSTED METAL AND DETERIORATED CONCRETE.



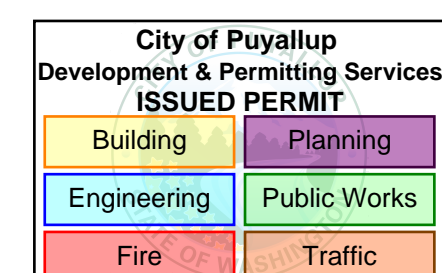
NO.	DATE	DESCRIPTION	BY:
7	05/29/24	RfIs	OPS
6	05/23/24	Plan Rev.	OPS
5	04/29/24	Plan Rev.	OPS
4	03/05/24	BWG's Rev	OPS
3	02/26/24	BWG's Rev	OPS
2	09/15/23	PPM's Rev	OPS
1	08/14/23	BWG's Rev	OPS

REVISIONS:
SHEET TITLE:
MAIN LEVEL DEMOLITION AND FLOOR PLAN
SHEET NUMBER:

A100



OKANO PICARD STUDIO
815 SEATTLE BLVD. S., SEATTLE, WA 98134 USA
T:206.856.9955 E:info@OkanoPicardStudio.com

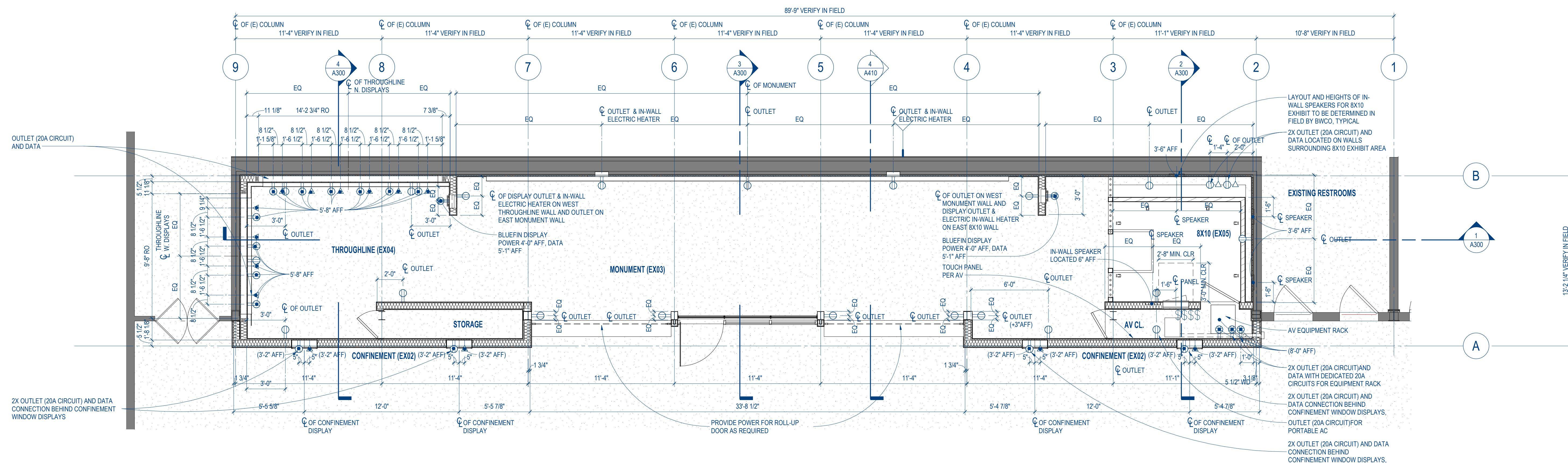


PROJECT:
PAC REMEMBRANCE GALLERY
110 9TH AVENUE SW
PUYALLUP, WA 98371

PROJECT ARCHITECT: YO
DRAWN BY: YO.LJ
JOB NUMBER: 2214

PROJECT STATUS:

CONSTRUCTION DOCUMENTS
JULY 8, 2024



1 MAIN LEVEL ELECTRICAL AND DATA PLAN

SCALE: 1/4" = 1'-0"

GENERAL NOTES:

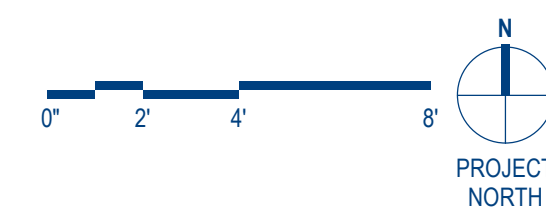
1. CONTRACTOR TO PROVIDE ALL NECESSARY OUTLETS REQUIRED BY CODE.

FLOOR PLAN LEGEND

- EXISTING CONSTRUCTION TO REMAIN
- NEW CONSTRUCTION

ELECTRICAL FIXTURE LEGEND

- WALL MOUNTED DATA
- WALL MOUNTED DUPLEX OUTLET LOCATED IN BASEBOARD UNLESS OTHERWISE NOTED
- WALL MOUNTED QUAD
- WALL MOUNTED SWITCH
- WALL MOUNTED DIMMER SWITCH



NO.	DATE	DESCRIPTION	BY:
5	05/29/24	RFA	OPS
4	05/23/24	Plan Rev.	OPS
3	04/29/24	Plan Rev.	OPS
2	02/26/24	BWC Rev	OPS
1	09/14/23	BWC Rev	OPS

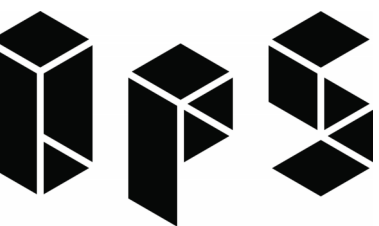
REVISIONS:

SHEET TITLE:

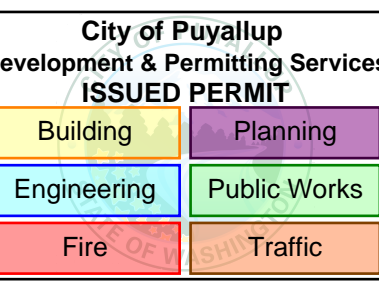
MAIN LEVEL ELECTRICAL & DATA PLAN

SHEET NUMBER:

A101



OKANO PICARD STUDIO
815 SEATTLE BLVD. S., SEATTLE, WA 98134 USA
T:206.856.9555 E:info@OkanoPicardStudio.com

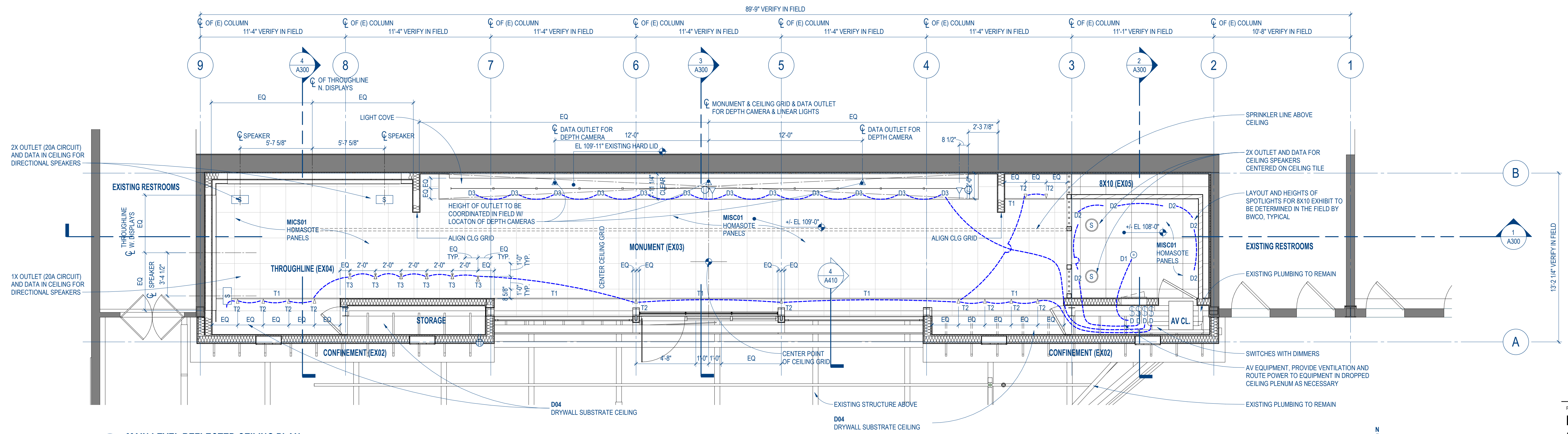


PROJECT:
PAC REMEMBRANCE GALLERY
110 9TH AVENUE SW
PUYALLUP, WA 98371

PROJECT ARCHITECT: YO
DRAWN BY: YO,LJ
JOB NUMBER: 2214

PROJECT STATUS:

CONSTRUCTION DOCUMENTS
JULY 8, 2024

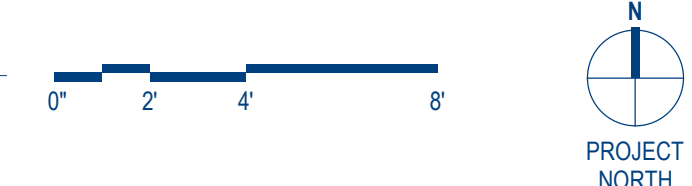


2 MAIN LEVEL REFLECTED CEILING PLAN

SCALE: 1/4" = 1'-0"

REFLECTED CEILING PLAN LEGEND

- | | |
|-----------------------------------|----------------------------|
| EXISTING CONSTRUCTION TO REMAIN | CEILING MOUNTED SPEAKER |
| NEW CONSTRUCTION | CEILING MOUNTED DATA |
| TRACK LIGHT | CEILING MOUNTED DUPLEX |
| SURFACE MOUNTED DIRECTIONAL LIGHT | CEILING MOUNTED QUAD |
| PROGRAMMABLE LIGHT SYSTEM | WALL MOUNTED SWITCH |
| HISTORIC PENDANT LIGHT | WALL MOUNTED DIMMER SWITCH |
| COLOR SPOTLIGHT | |
| WALL MOUNTED LIGHT | |
| FLOOR MOUNTED SPOT LIGHT | |



1 MAIN LEVEL DEMOLITION REFLECTED CEILING PLAN

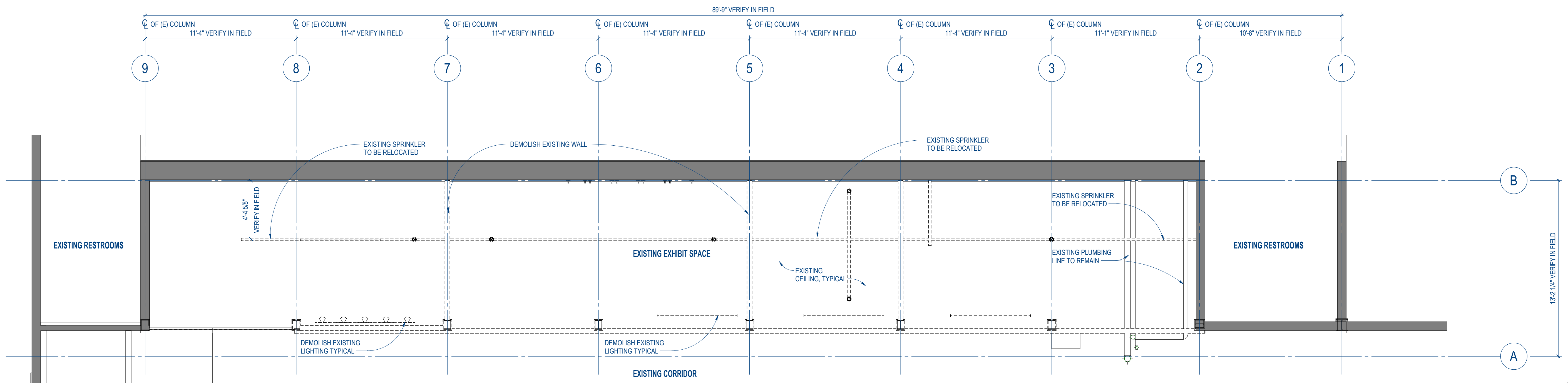
SCALE: 1/4" = 1'-0"

DEMOLITION FLOOR PLAN LEGEND

- | |
|--|
| EXISTING CONSTRUCTION TO REMAIN |
| EXISTING CONSTRUCTION TO BE DEMOLISHED |

DEMOLITION PLAN GENERAL NOTES:

- CONTRACTOR SHALL NOTIFY THE ARCHITECT IMMEDIATELY IF DEMOLITION UNCOVERS ANY UNFORSEEN OR CONCEALED CONDITIONS
- ALL DIMENSIONS ARE APPROXIMATE. CONTRACTOR SHALL VERIFY ALL DIMENSIONS AND CONDITIONS PRIOR TO INITIATING THE WORK AND NOTIFY THE ARCHITECT IMMEDIATELY IF ANY CONFLICTS OR DISCREPANCIES EXIST.
- IN ADDITION TO THE DEMOLITION SPECIFICALLY SHOWN, CONTRACTOR SHALL CUT, MOVE OR REMOVE ITEMS AS NECESSARY TO PROVIDE ACCESS OR TO ALLOW ALTERATIONS AND WORK TO PROCEED INCLUDING ITEMS SUCH AS RE-ROUTING OF EXISTING UTILITIES, REMOVAL OF ABANDONED ITEMS AND REMOVAL OF DEBRIS SUCH AS ROTTED WOOD, RUSTED METAL AND DETERIORATED CONCRETE.



NO.	DATE	DESCRIPTION	BY
7	05/23/24	Plan Rev.	OPS
6	04/16/24	Lighting Rev.	OPS
5	04/08/24	HAC	OPS
4	04/02/24	Lighting Schedule	OPS
3	03/05/24	BWCa Rev	OPS
2	03/15/23	PPM Rev	OPS
1	08/14/23	BWCa Rev	OPS

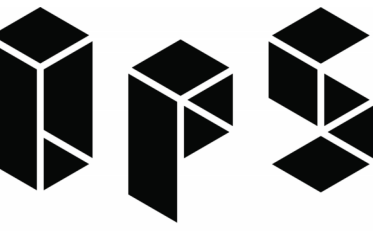
REVISIONS:

SHEET TITLE:

MAIN LEVEL DEMOLITION AND PROPOSED RCP

SHEET NUMBER:

AC100



OKANO PICARD STUDIO
815 SEATTLE BLVD. S., SEATTLE, WA 98134 USA
T:206.856.9955 E:info@OkanoPicardStudio.com



City of Puyallup Development & Permitting Services ISSUED PERMIT	
Building	Planning
Engineering	Public Works
Fire	Traffic

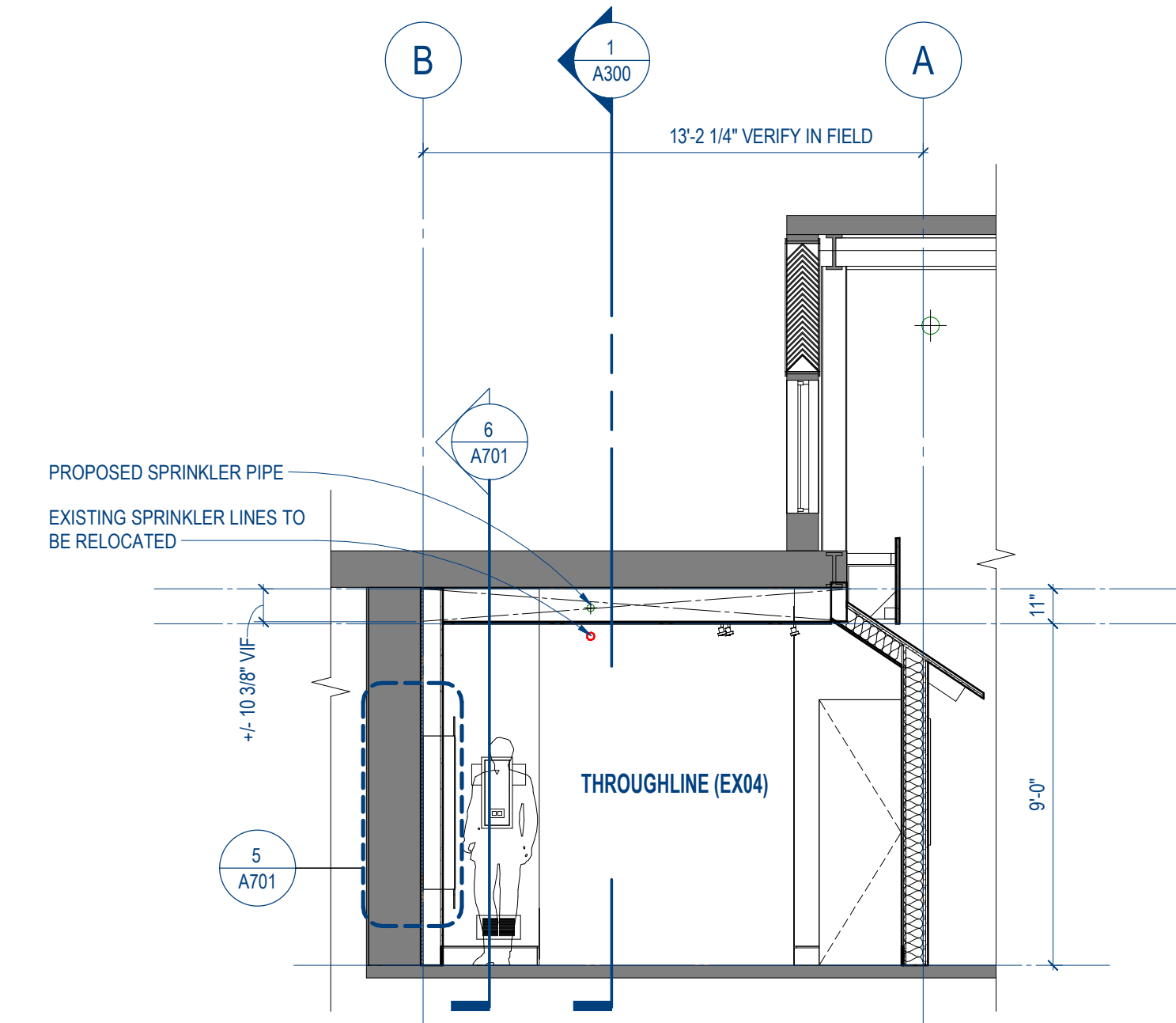
Plans lack details for ceiling grid installation; Please see NWCB 401 document included with these plan documents. Please provide manufactures installation instruction and seek architectural guidance for discrepancy. Typical

PROJECT:
PAC REMEMBRANCE GALLERY
110 9TH AVENUE SW
PUYALLUP, WA 98371

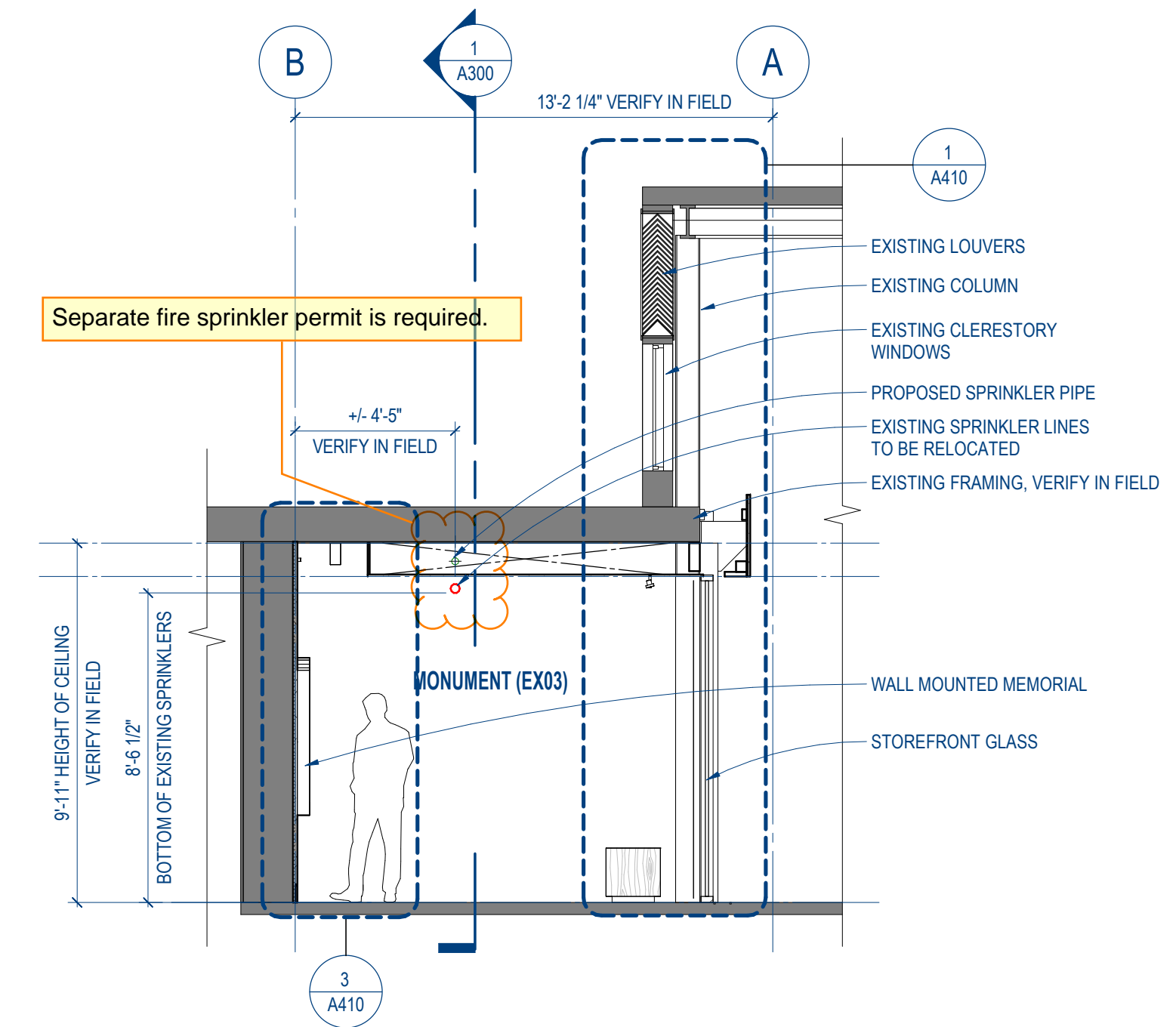
PROJECT ARCHITECT: YO
DRAWN BY: YO,LJ
JOB NUMBER: 2214

PROJECT STATUS:

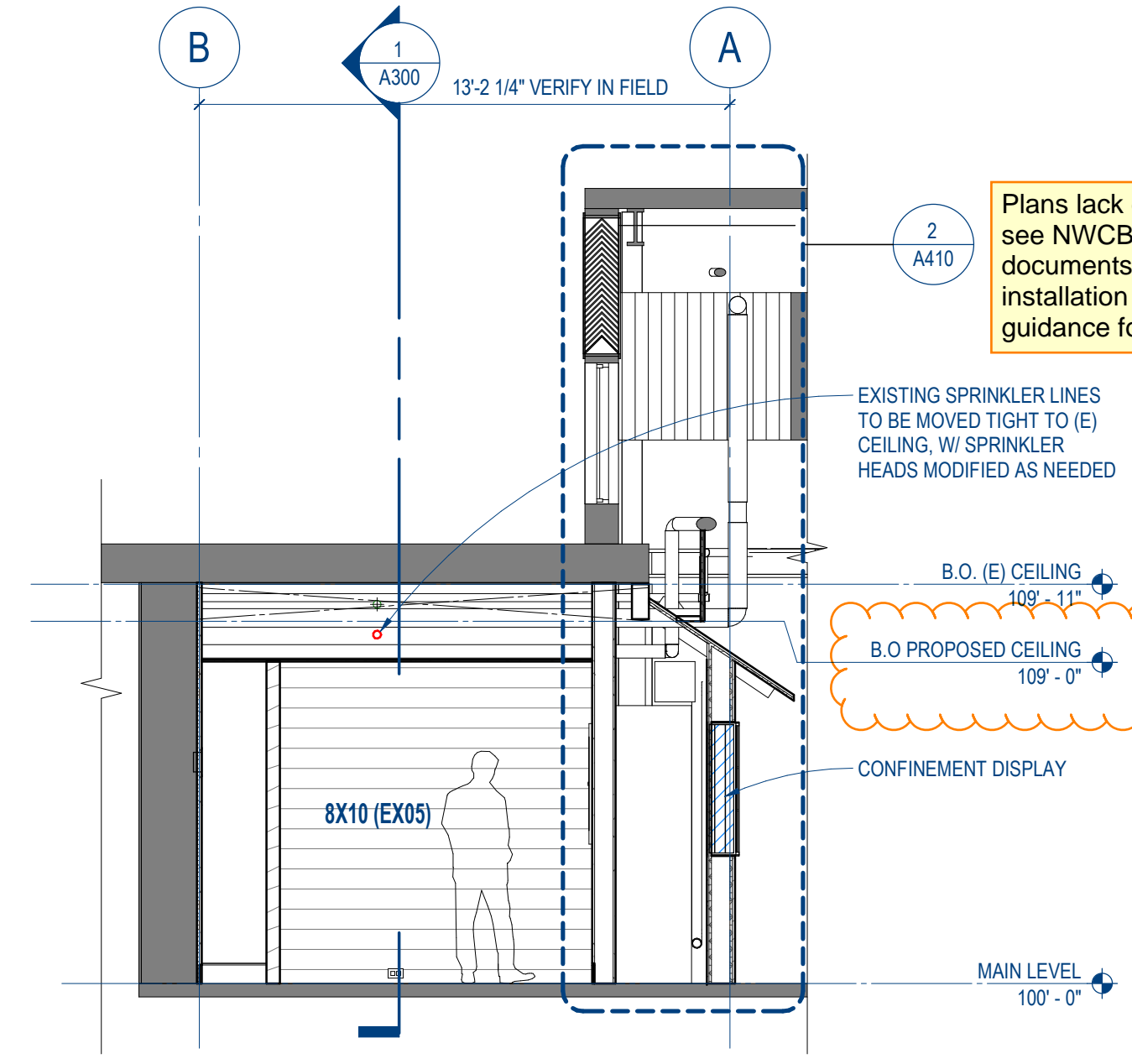
CONSTRUCTION DOCUMENTS
JULY 8, 2024



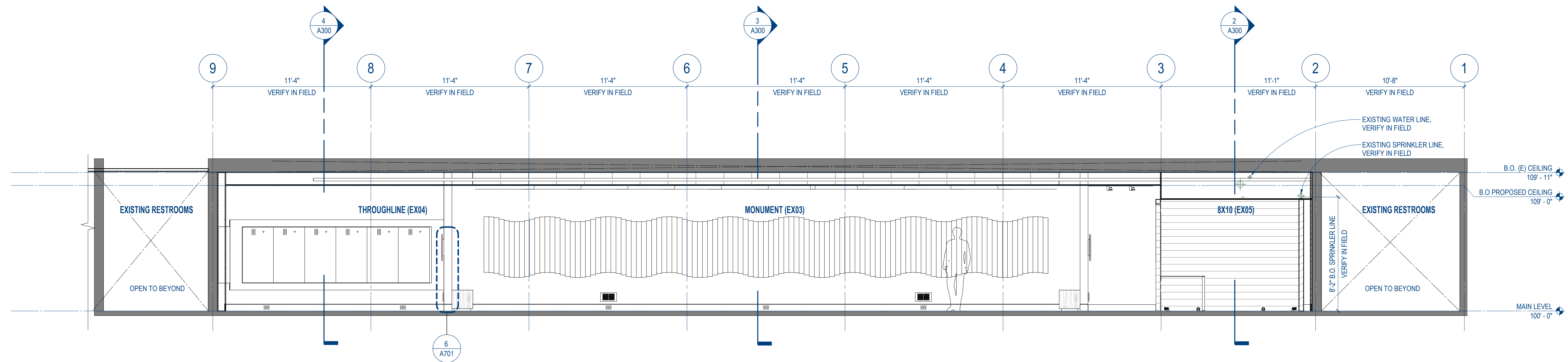
4 THROUGHLINE PARTIAL BUILDING SECTION
SCALE: 1/4" = 1'-0"



3 MONUMENT PARTIAL BUILDING SECTION
SCALE: 1/4" = 1'-0"



2 8X10 PARTIAL BUILDING SECTION
SCALE: 1/4" = 1'-0"



1 LONGITUDINAL BUILDING SECTION
SCALE: 1/4" = 1'-0"

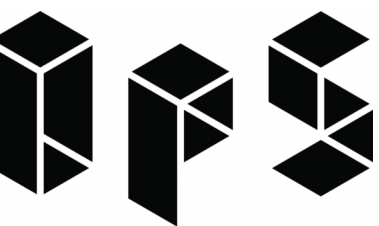
3	05/23/24	Plan Rev.	OPS
2	04/08/24	HAC	OPS
1	09/15/23	PPM Rev	OPS
NO.	DATE	DESCRIPTION	BY:

REVISIONS:

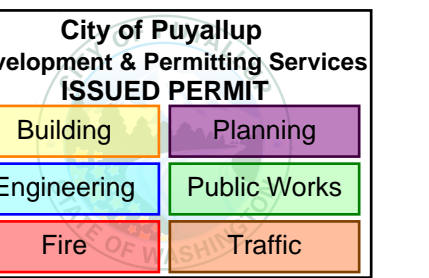
SHEET TITLE:
BUILDING SECTIONS

SHEET NUMBER:

A300



OKANO PICARD STUDIO
815 SEATTLE BLVD. S., SEATTLE, WA 98134 USA
T:206.856.9955 E:info@OkanoPicardStudio.com



PROJECT:
PAC REMEMBRANCE GALLERY
110 9TH AVENUE SW
PUYALLUP, WA 98371

PROJECT ARCHITECT: YO
DRAWN BY: YO,LJ
JOB NUMBER: 2214

PROJECT STATUS:

CONSTRUCTION DOCUMENTS
JULY 8, 2024

NO.	DATE	DESCRIPTION	BY
4	05/29/24	RFIs	OPS
3	05/23/24	Plan Rev.	OPS
2	03/26/24	ENR Rev	OPS
1	09/15/23	PPM Rev	OPS

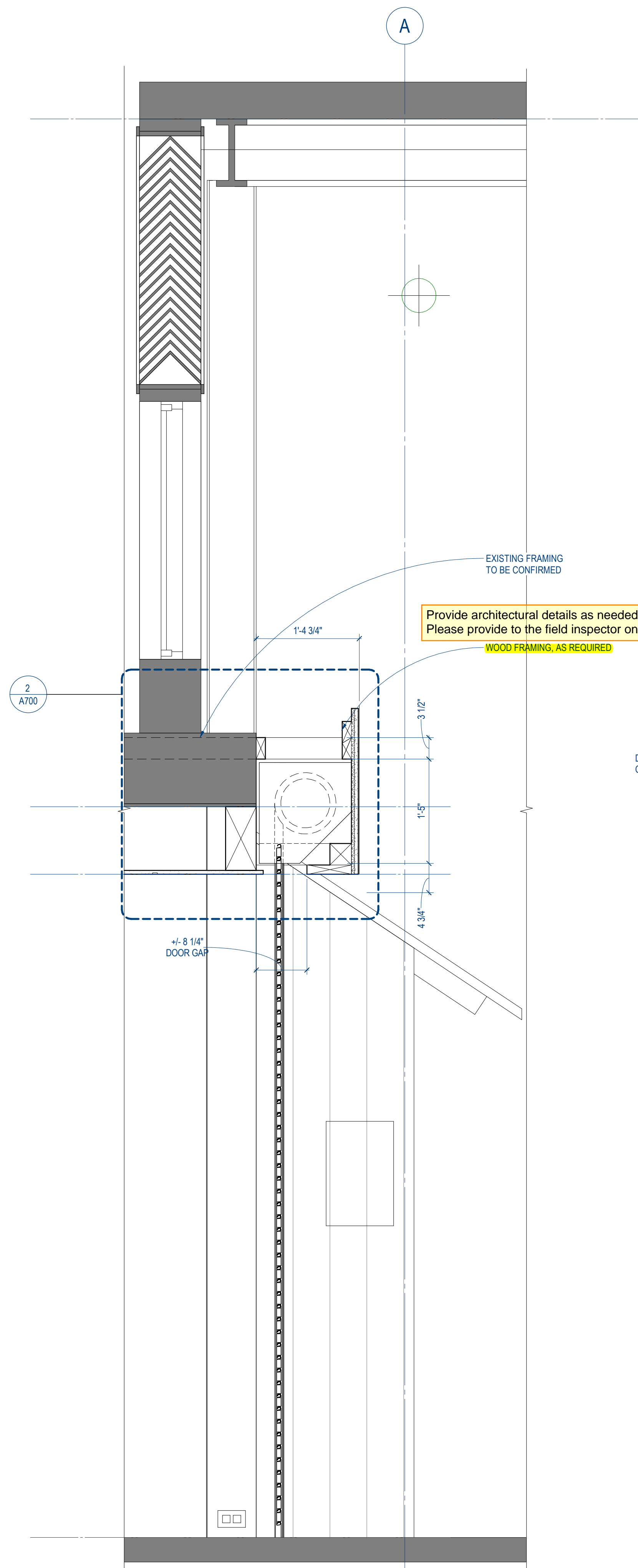
REVISIONS:

SHEET TITLE:

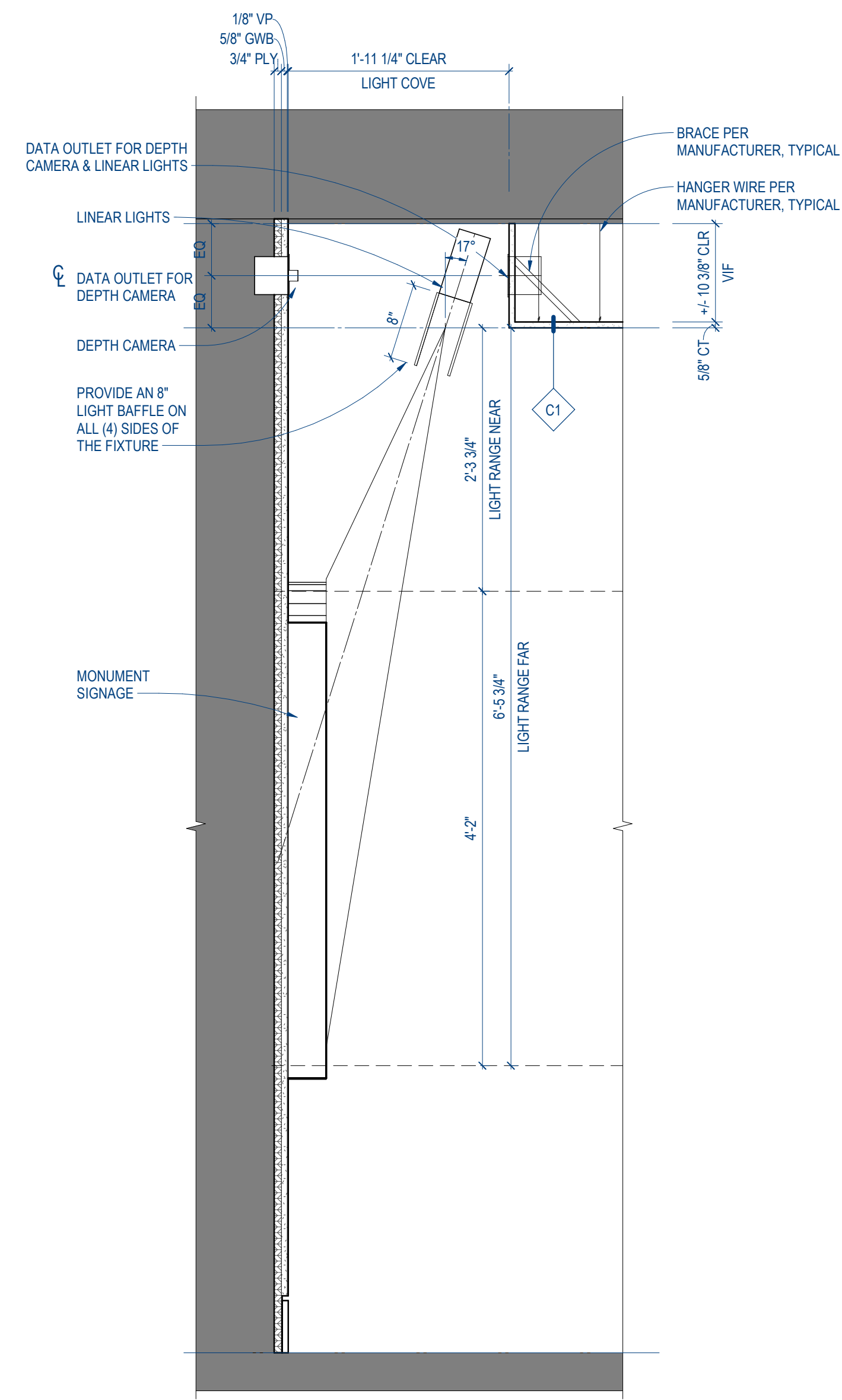
WALL SECTIONS

SHEET NUMBER:

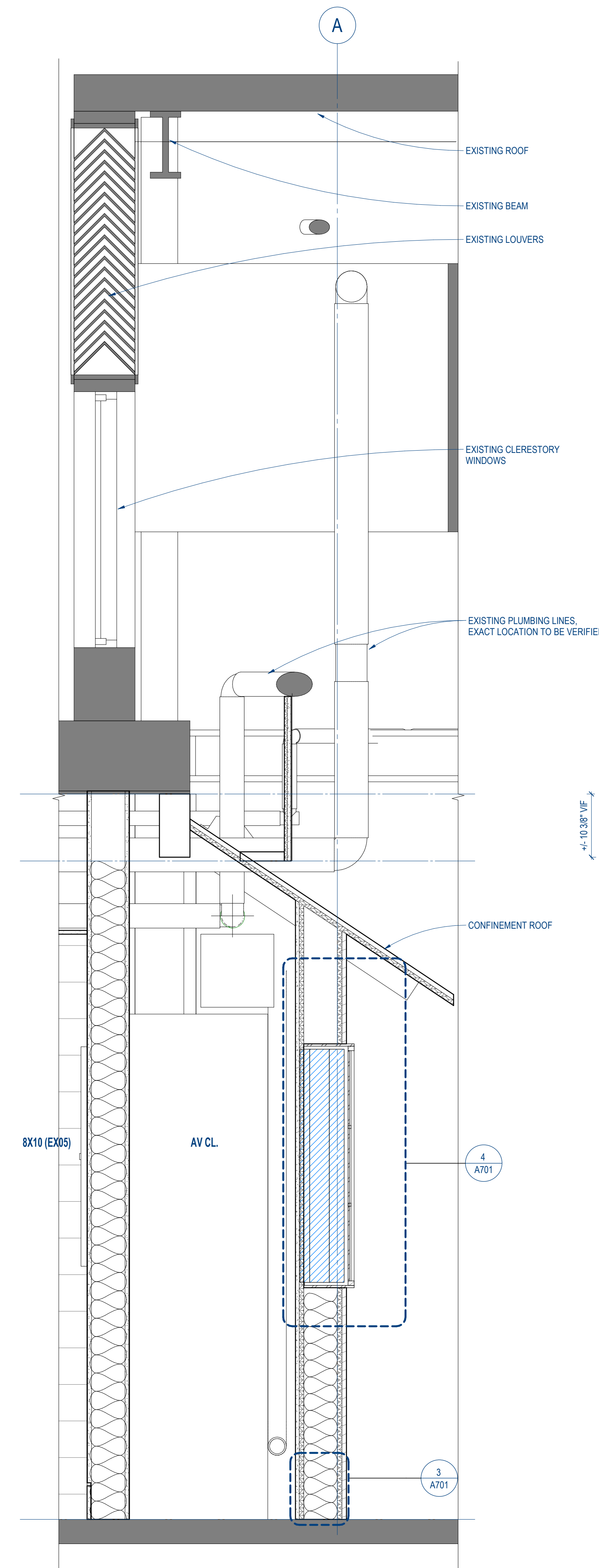
A410



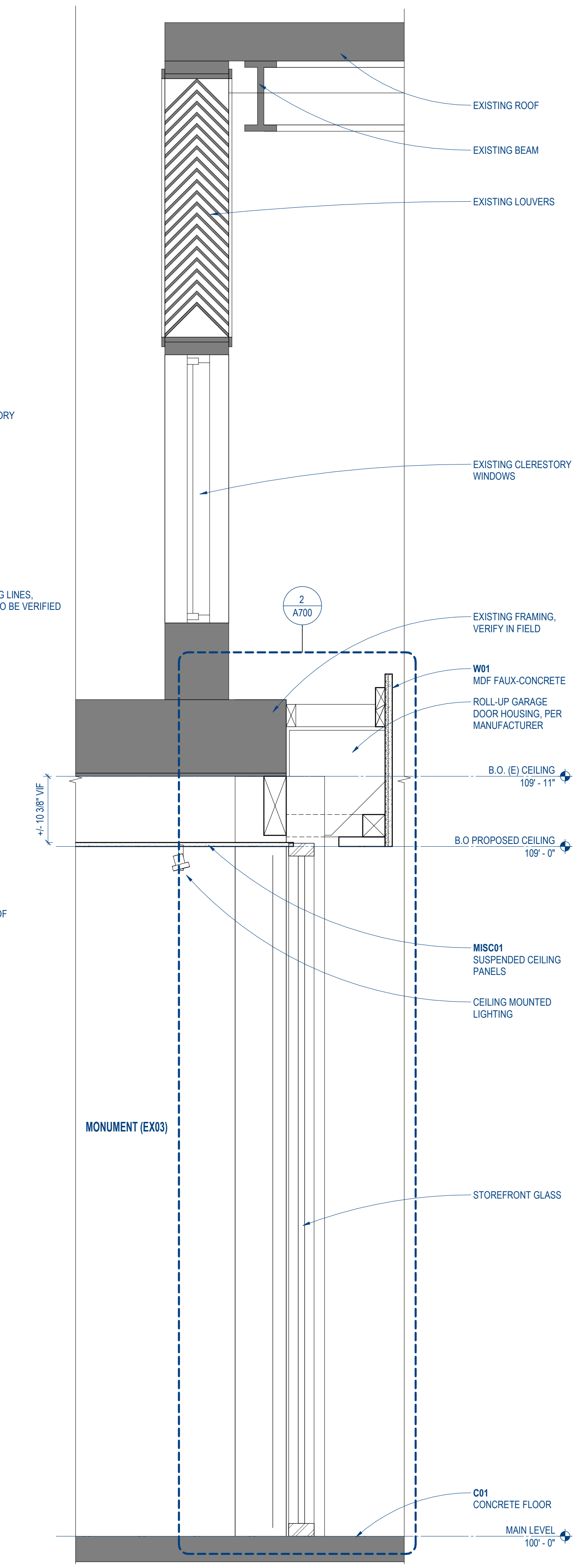
4 WALL SECTION THRU ROLL-UP DOOR
SCALE: 1" = 1'-0"



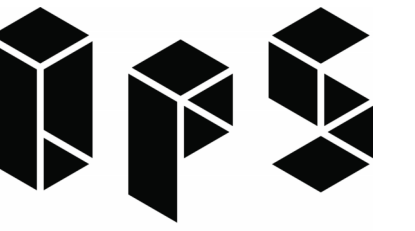
3 MONUMENT WALL SECTION @ LIGHT
SCALE: 1" = 1'-0"



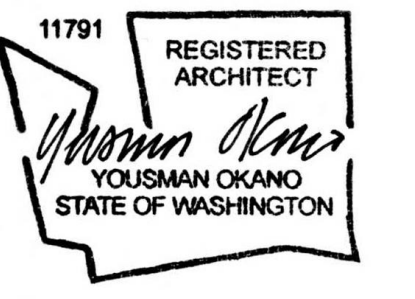
2 WALL SECTION THRU 8 X 10
SCALE: 1" = 1'-0"



1 WALL SECTION THRU MONUMENT
SCALE: 1" = 1'-0"



OKANO PICARD STUDIO
815 SEATTLE BLVD. S., SEATTLE, WA 98134 USA
T:206.856.9555 E:info@OkanoPicardStudio.com



City of Puyallup Development & Permitting Services ISSUED PERMIT	
Building	Planning
Engineering	Public Works
Fire	Traffic

PROJECT:
PAC REMEMBRANCE GALLERY
110 9TH AVENUE SW
PUYALLUP, WA 98371

PROJECT ARCHITECT: YO
DRAWN BY: YO, LJ
JOB NUMBER: 2214

PROJECT STATUS:

CONSTRUCTION DOCUMENTS
JULY 8, 2024

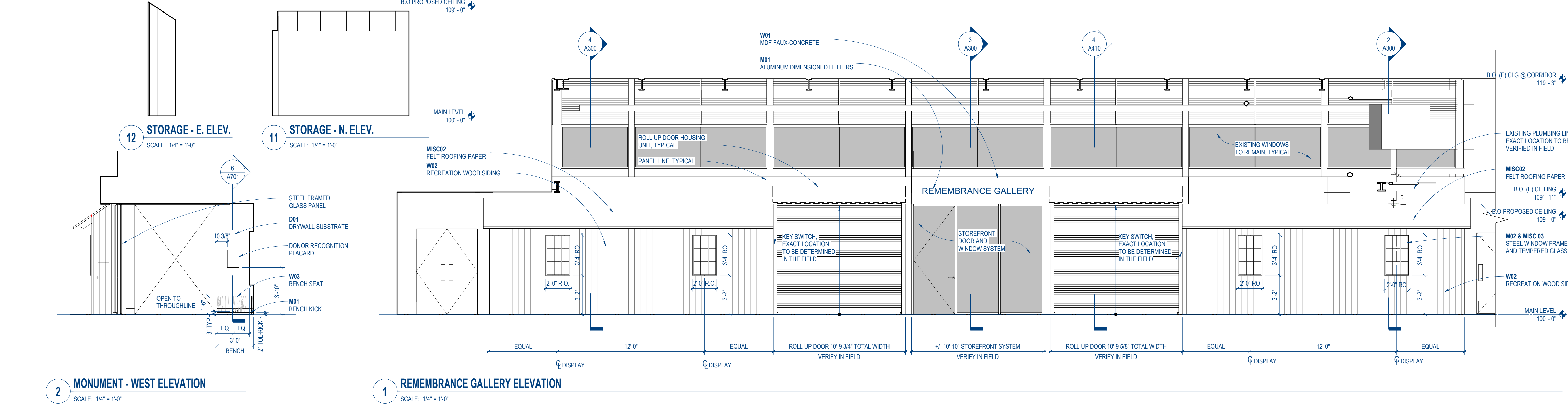
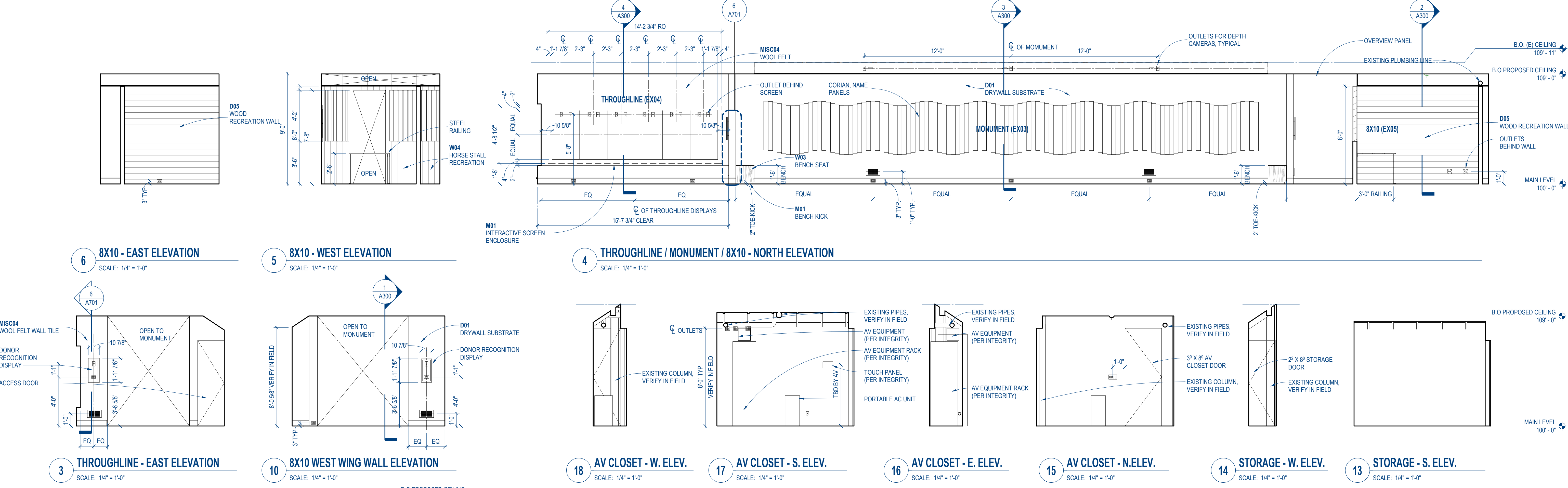
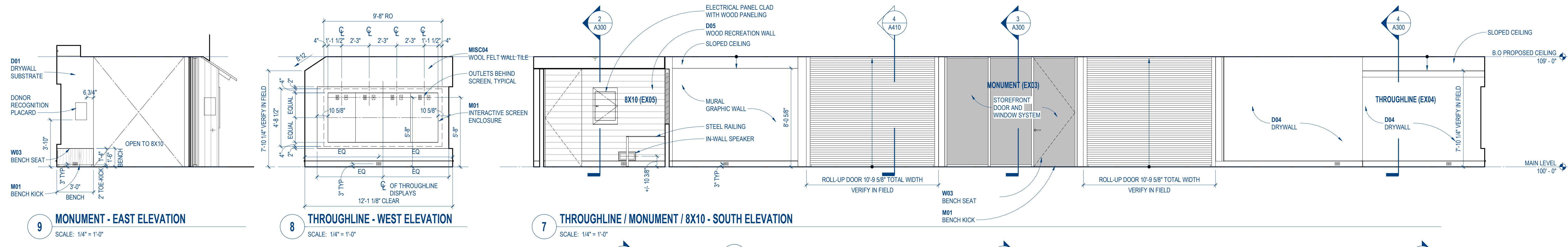
REVISIONS:

4	05/29/24	RFIs	OPS
3	05/23/24	Plan Rev.	OPS
2	03/26/24	BMC Rev.	OPS
1	09/15/23	PPM Rev.	OPS
NO.	DATE	DESCRIPTION	BY:

SHEET TITLE:
INTERIOR ELEVATIONS

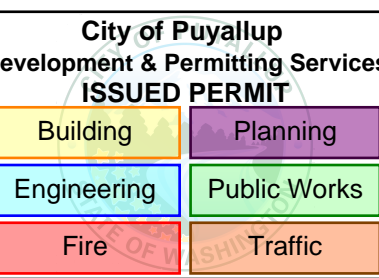
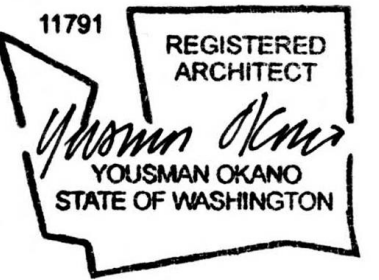
SHEET NUMBER:

A500





OKANO PICARD STUDIO
815 SEATTLE BLVD. S., SEATTLE, WA 98134 USA
T:206.856.9955 E:info@OkanoPicardStudio.com

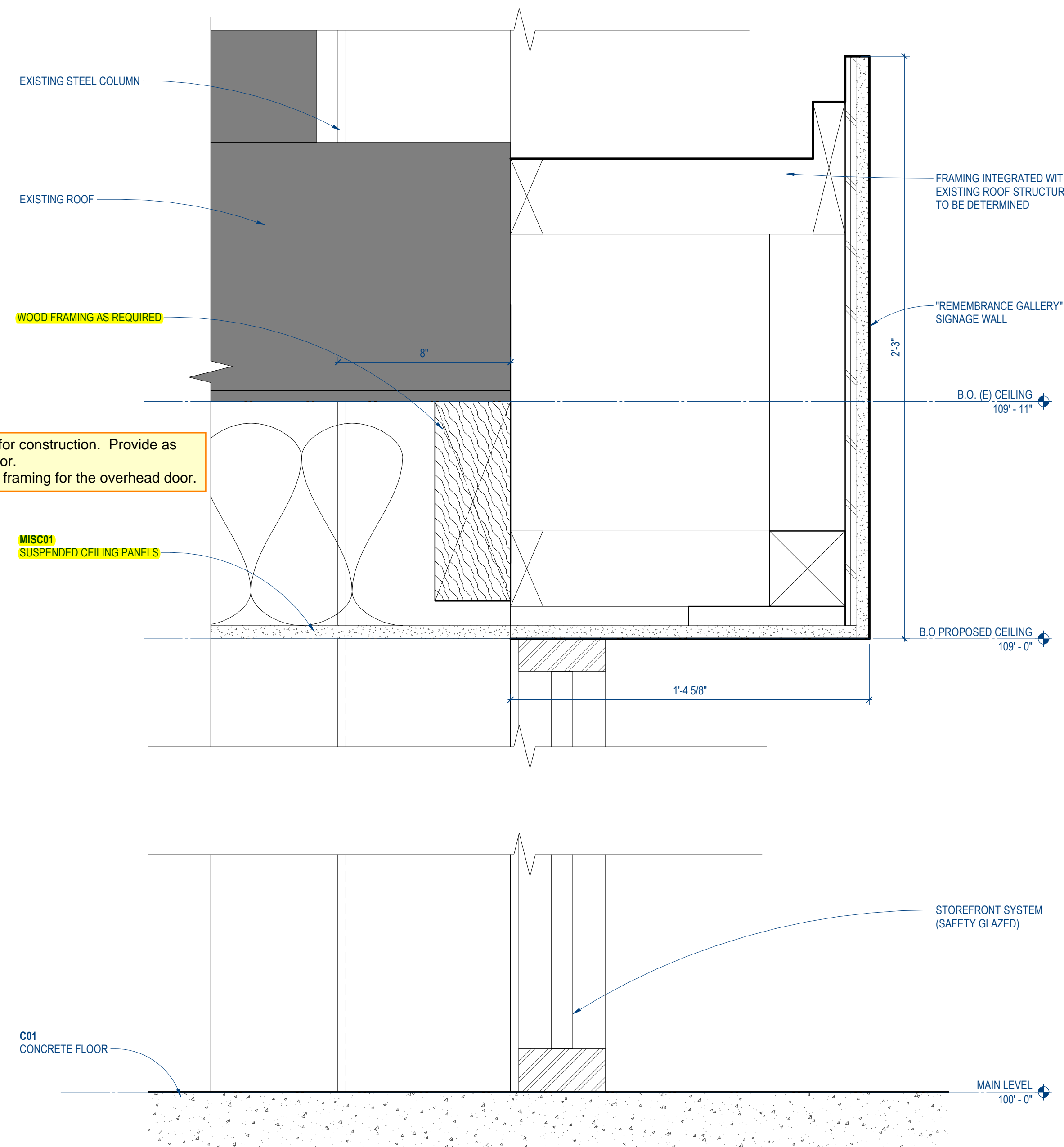
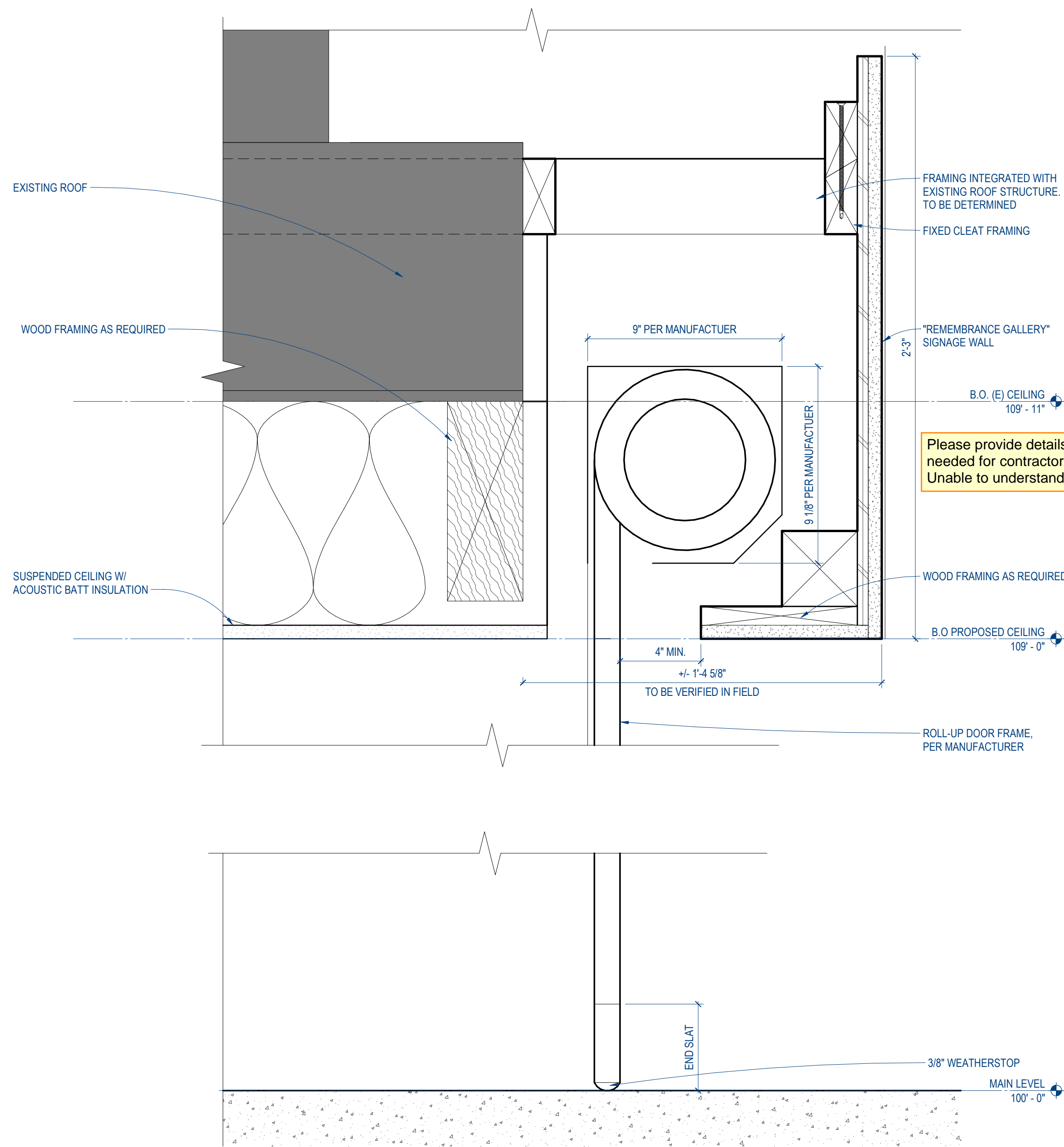


PROJECT:
PAC REMEMBRANCE GALLERY
110 9TH AVENUE SW
PUYALLUP, WA 98371

PROJECT ARCHITECT: YO
DRAWN BY: YO,LJ
JOB NUMBER: 2214

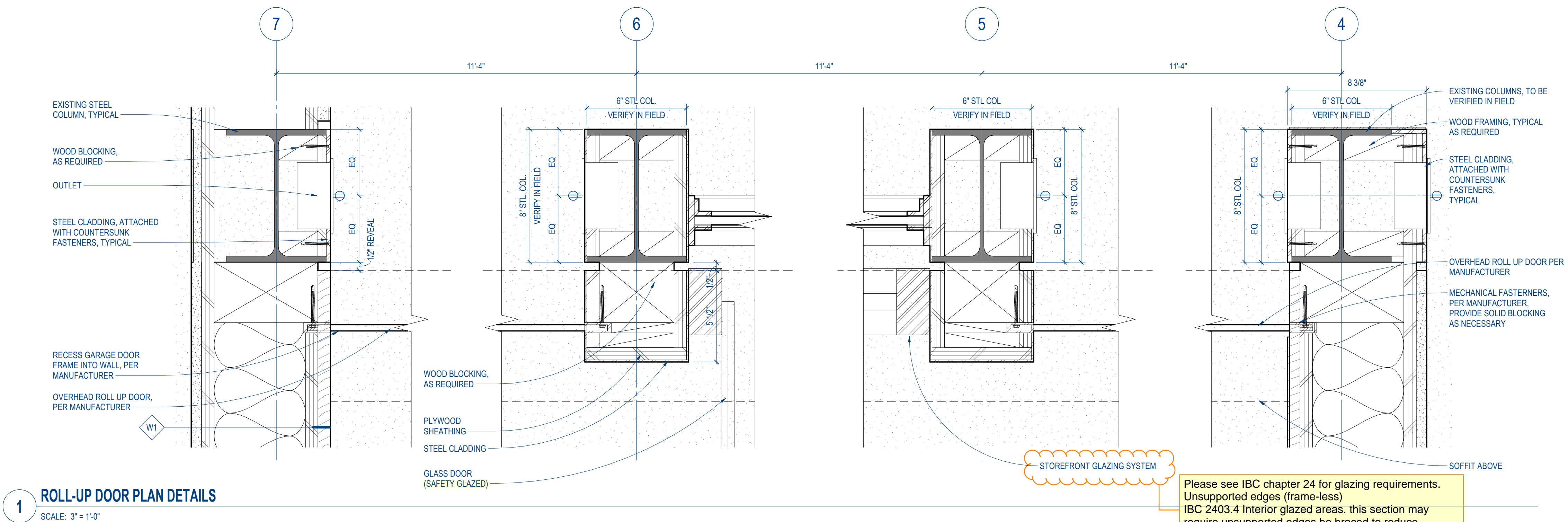
PROJECT STATUS:

CONSTRUCTION DOCUMENTS
JULY 8, 2024



3 ROLL-UP DOOR HEAD AND THRESHOLD DETAIL
SCALE: 3" = 1'-0"

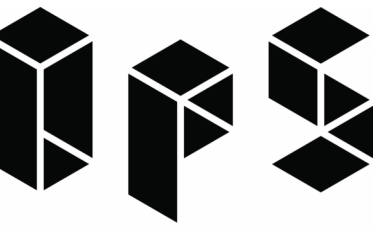
2 GLAZED PANEL HEAD AND SILL DETAIL
SCALE: 3" = 1'-0"



1 ROLL-UP DOOR PLAN DETAILS
SCALE: 3" = 1'-0"

SHEET NUMBER:

A700



OKANO PICARD STUDIO
815 SEATTLE BLVD. S., SEATTLE, WA 98134 USA
T:206.856.9955 E:info@OkanoPicardStudio.com



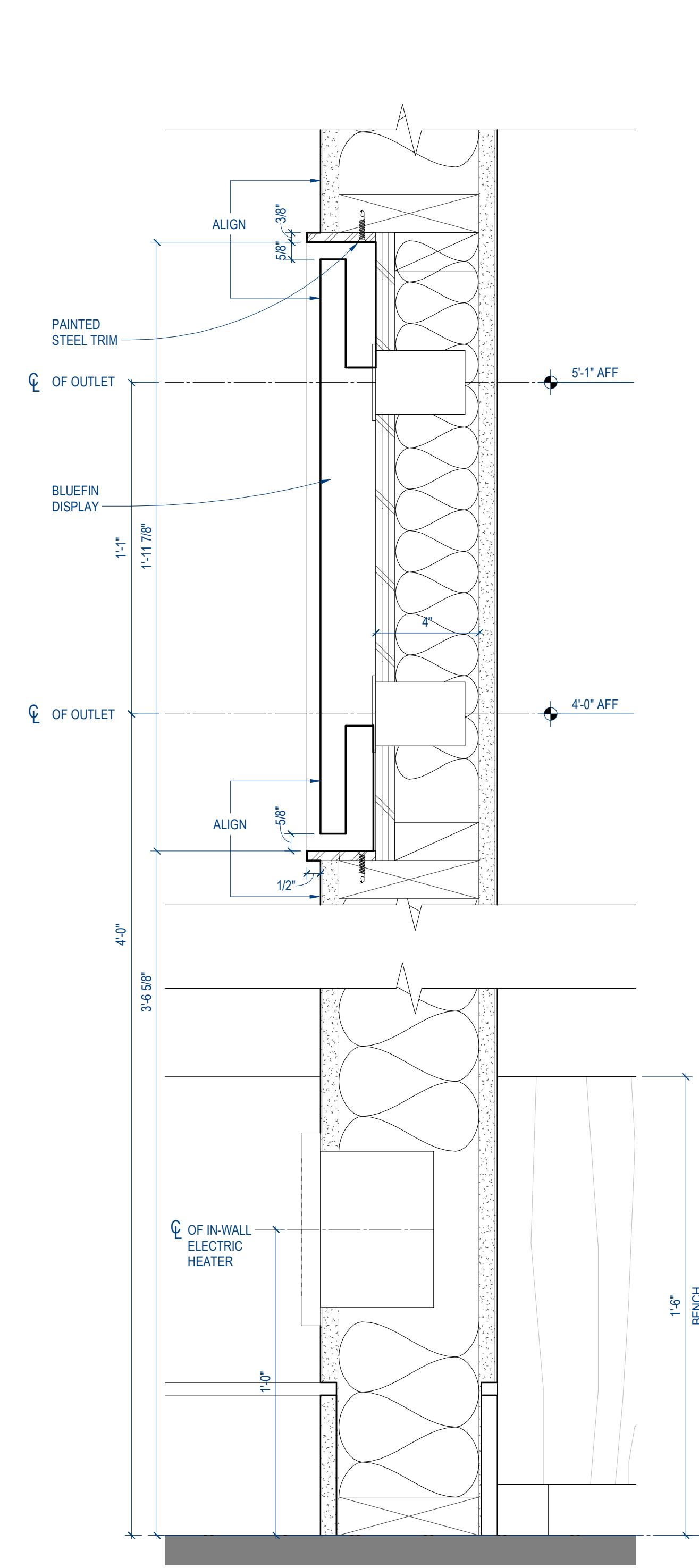
City of Puyallup Development & Permitting Services ISSUED PERMIT	
Building	Planning
Engineering	Public Works
Fire	Traffic

PROJECT:
PAC REMEMBRANCE GALLERY
110 9TH AVENUE SW
PUYALLUP, WA 98371

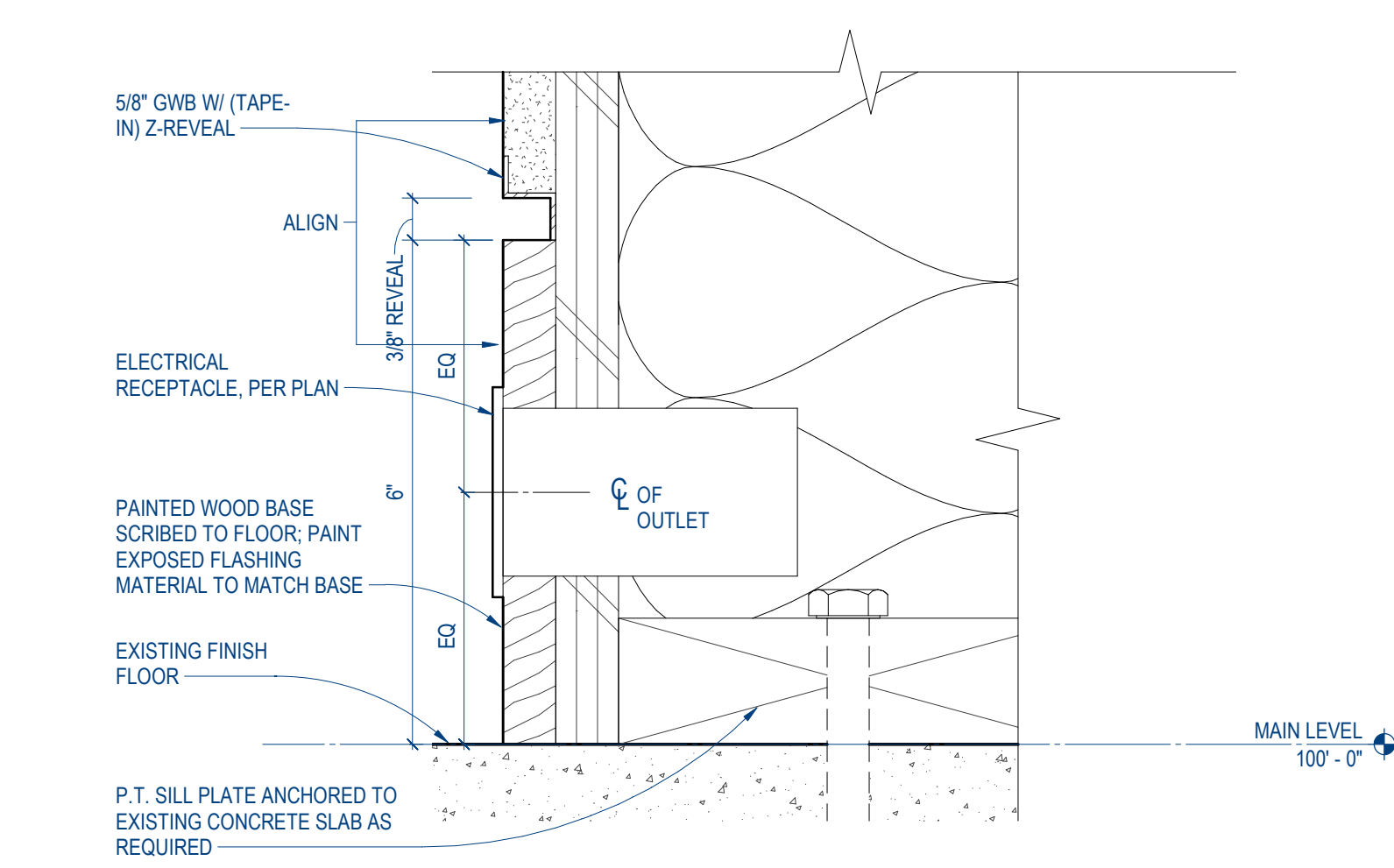
PROJECT ARCHITECT: YO
DRAWN BY: YO,LJ
JOB NUMBER: 2214

PROJECT STATUS:

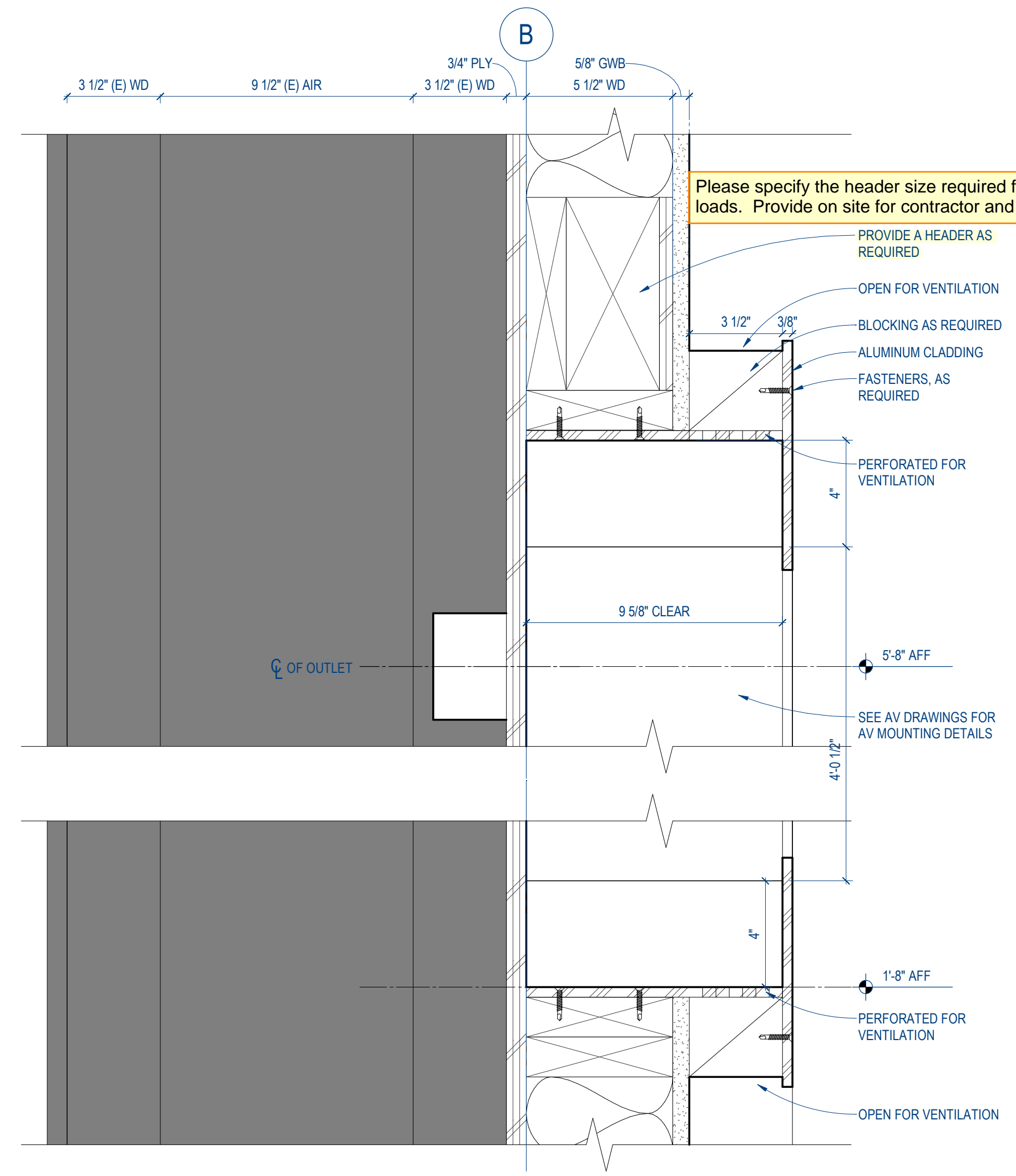
CONSTRUCTION DOCUMENTS
JULY 8, 2024



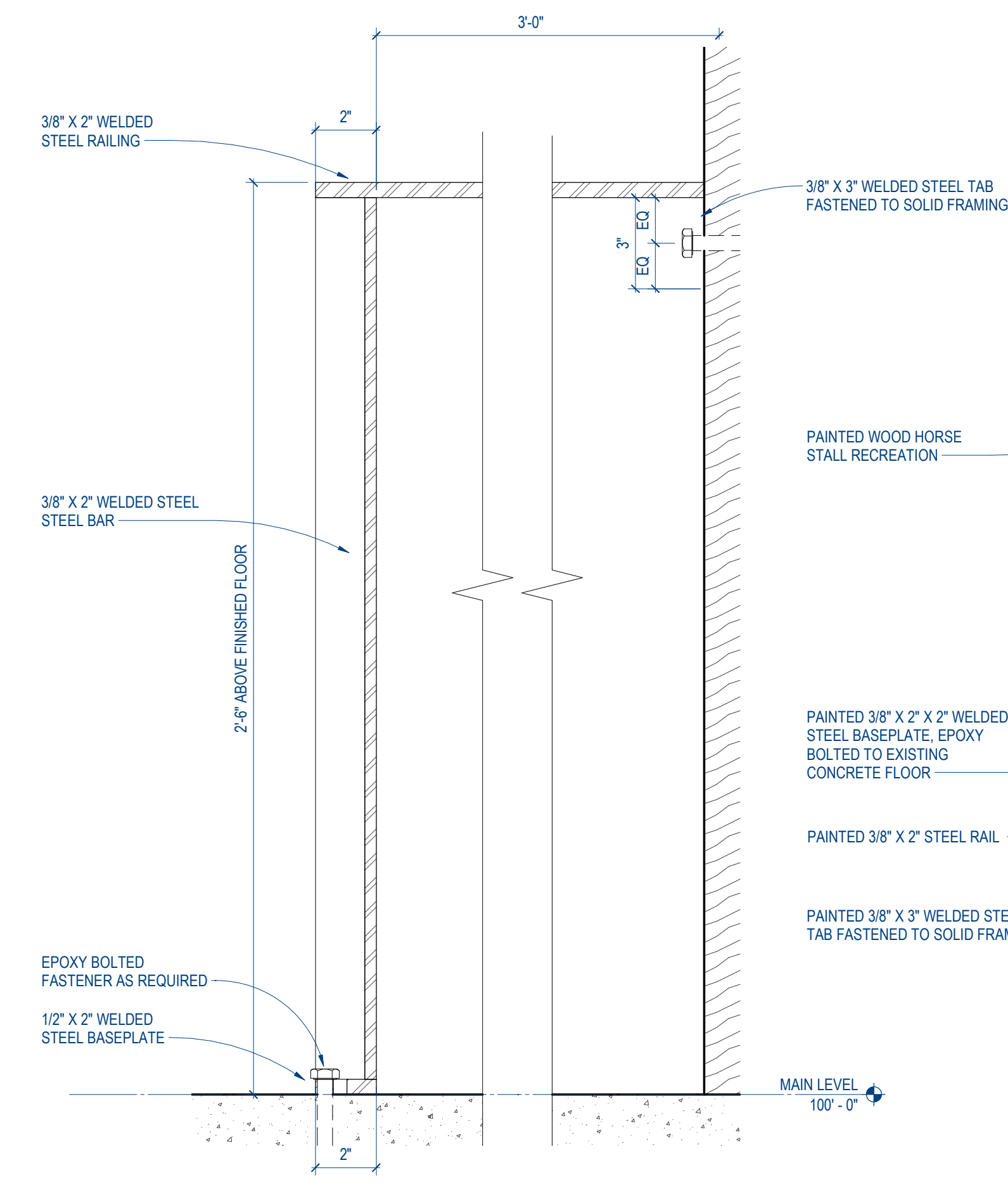
6 MONUMENT WING WALL SECTION
SCALE: 3" = 1'-0"



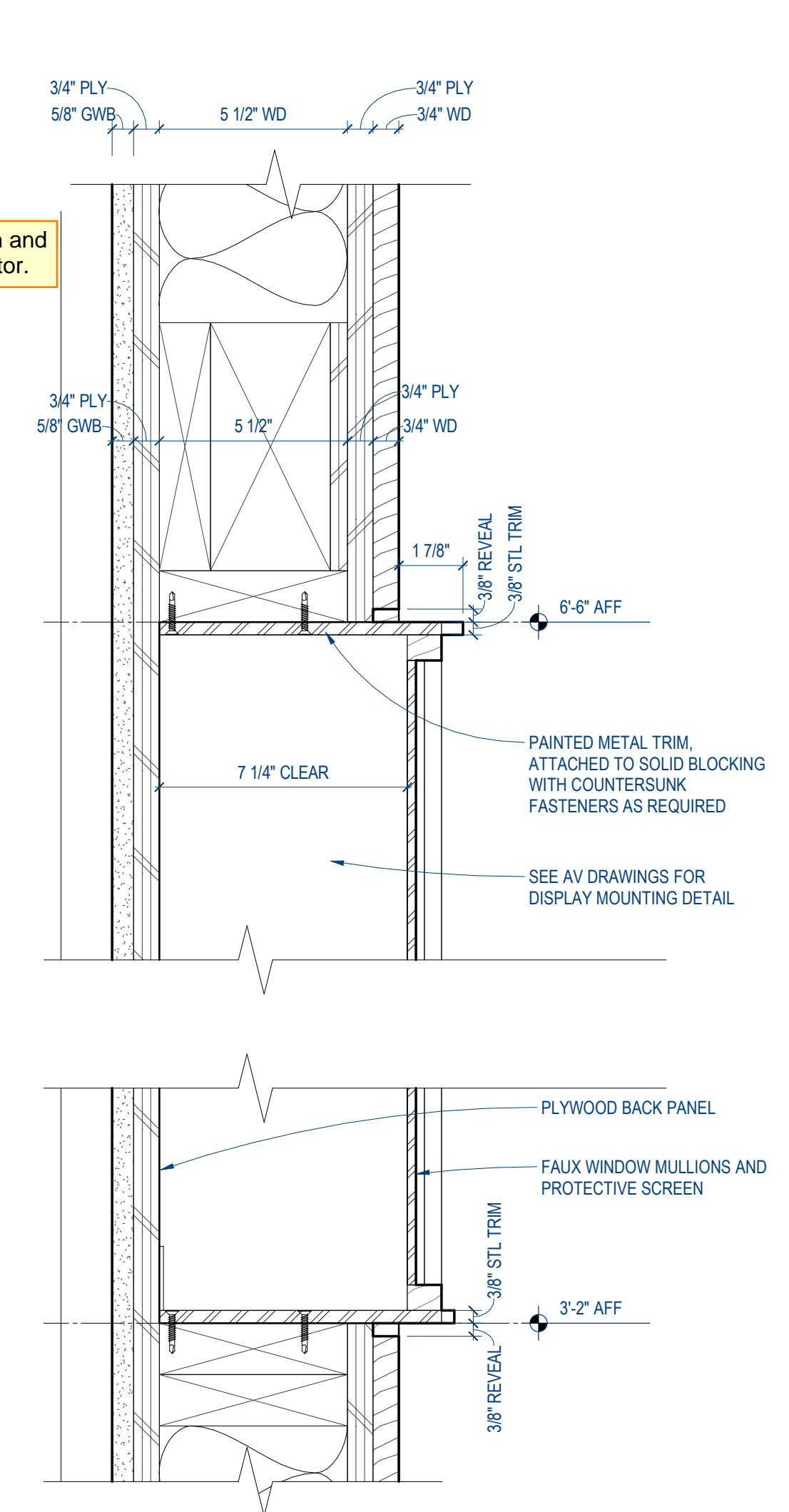
3 TYPICAL WALL BASE DETAIL
SCALE: 6" = 1'-0"



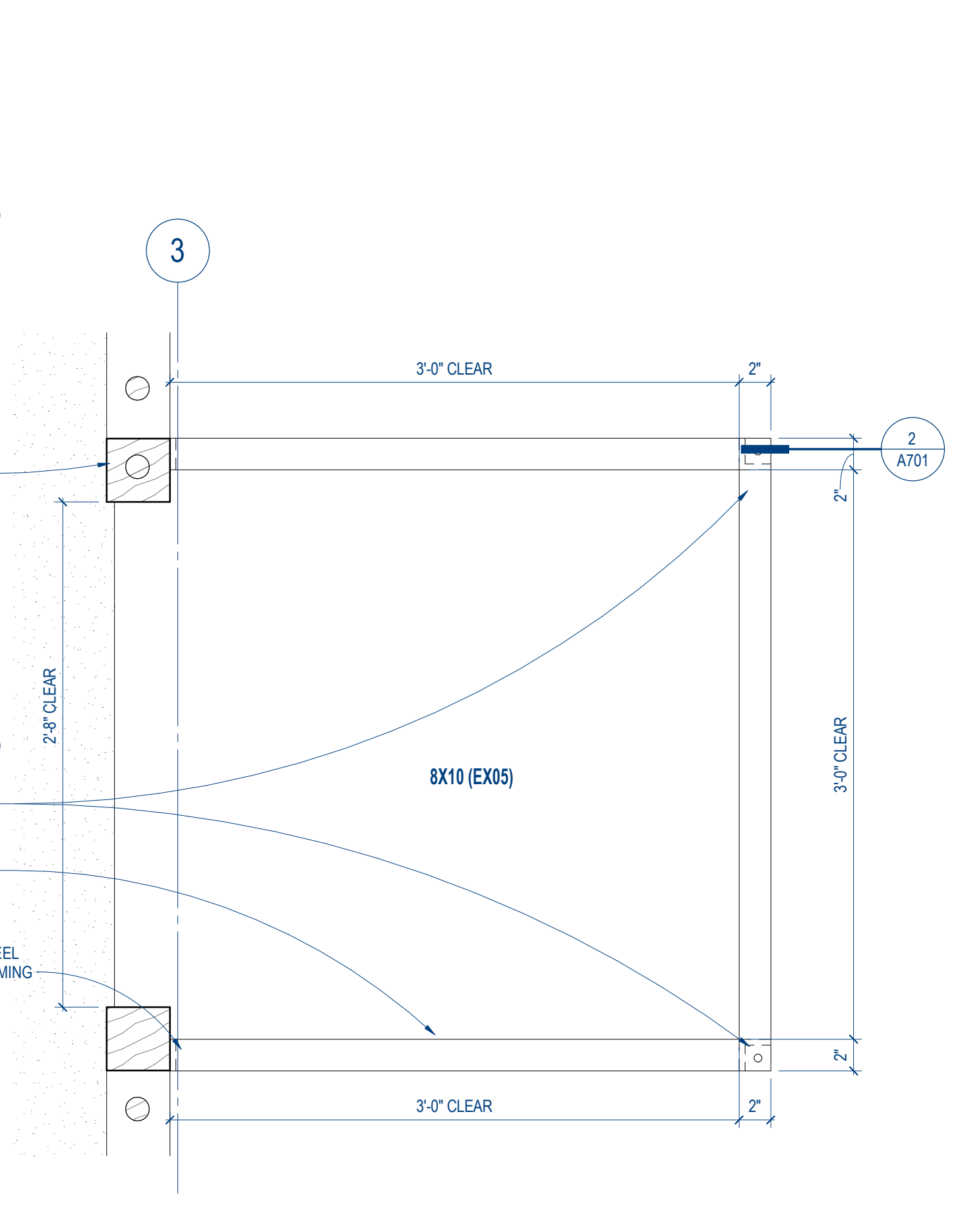
5 THROUGHLINE SCREEN SECTION DETAIL
SCALE: 3" = 1'-0"



2 8X10 RAILING SECTION
SCALE: 3" = 1'-0"



4 CONFINEMENT SCREEN SECTION DETAIL
SCALE: 3" = 1'-0"



1 8X10 RAILING PLAN DETAIL
SCALE: 1 1/2" = 1'-0"

3	05/28/24	RFL	OPS
2	05/23/24	Plan Rev	OPS
1	03/05/24	BWCs Rev	OPS
NO.	DATE	DESCRIPTION	BY:

REVISIONS:

SHEET TITLE:

INTERIOR DETAILS

SHEET NUMBER:

A701