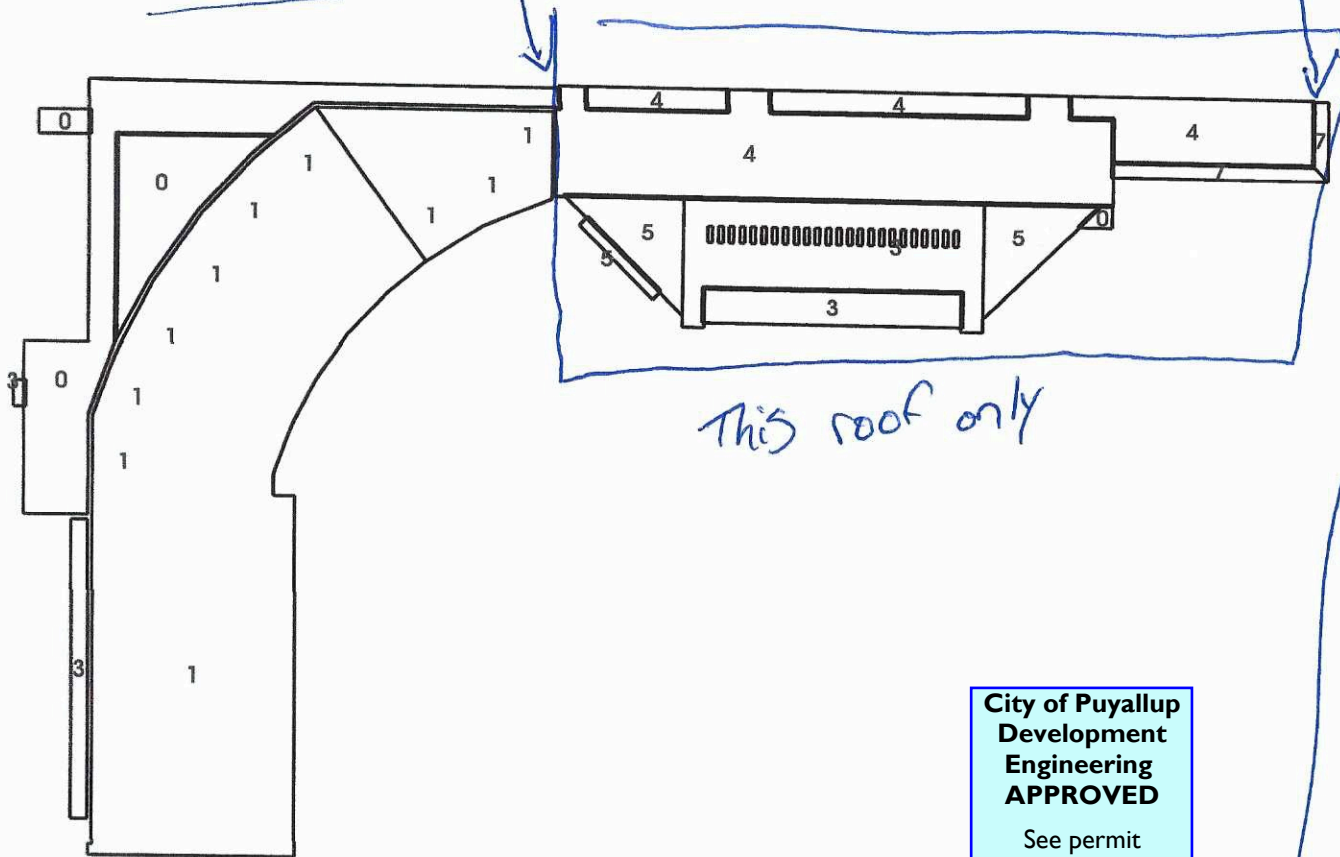




sidewalk closure for these roof sections

9th Ave SW



This roof only

Meridian

**City of Puyallup
Development
Engineering
APPROVED**

See permit conditions.

ycharitou
08/05/2024
9:08:16 AM



Any public facilities, including utilities, curb, gutter, driveway approach, ramp, or sidewalk broken now or during the course of construction shall be removed and replaced per City Standards. Restoration limits and requirements shall be at the discretion of the City.

Pitches in inches per foot



QuickMeasure

Roof Reports in Under an Hour

City of Puyallup Development & Permitting Services	
ISSUED PERMIT	
Building	Planning
Engineering	Public Works
Fire	Traffic

PRROW20240905

Top View

2023-08-13

