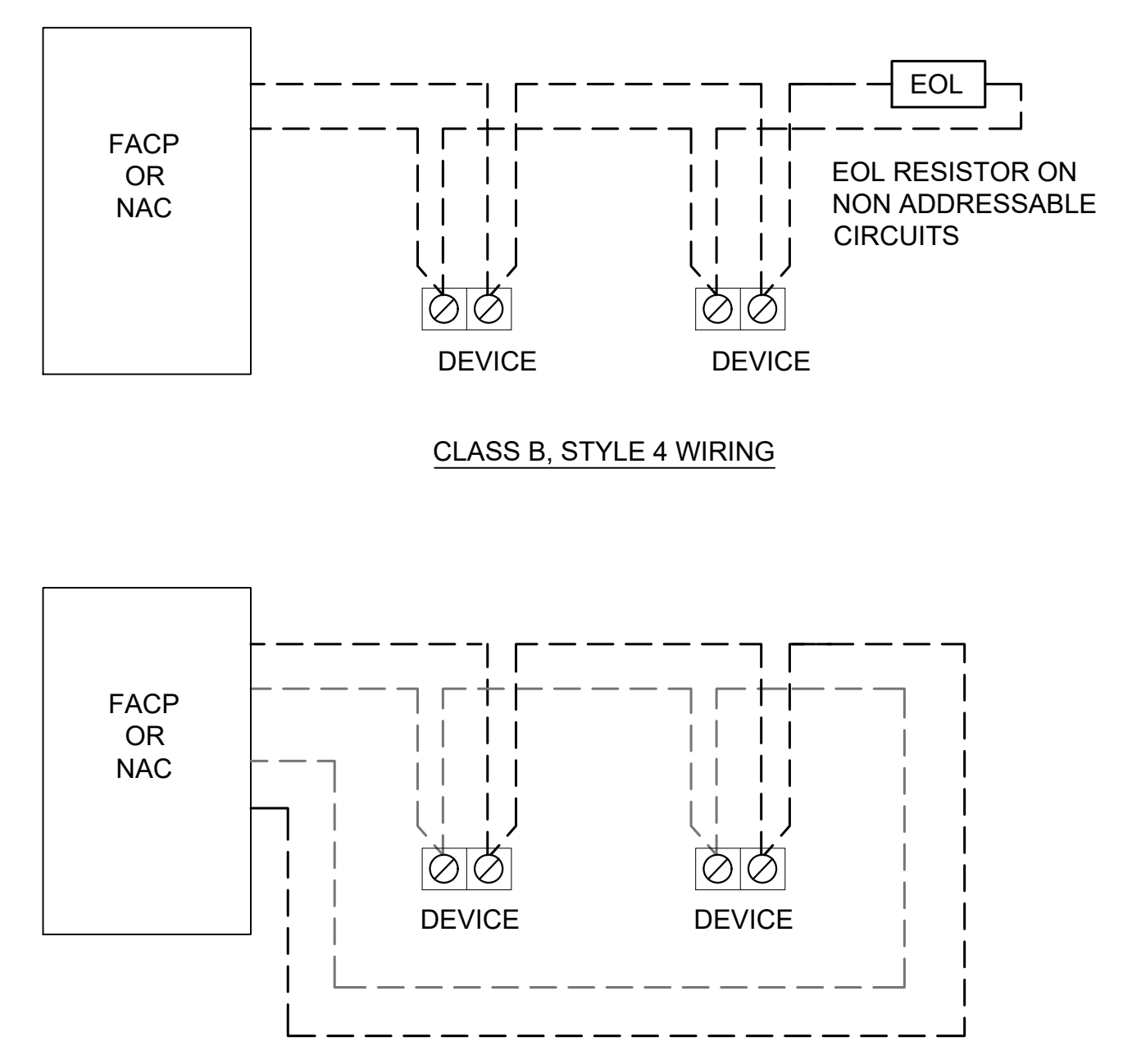




## CLASS A OR B NOTIFICATION WIRING



CLASS B, STYLE 4 WIRING  
CLASS A, STYLE 6 WIRING

### SEPARATION OF CLASS A CIRCUITS - INSTALLATION EXCEPTIONS:

CLASS A OUTGOING AND RETURN CONDUCTORS, EXITING AND RETURNING TO THE CONTROL PANEL, ARE TO BE ROUTED SEPARATELY. THE MINIMUM RECOMMENDED SEPARATION IS 1 FT. VERTICALLY AND 4 FT. HORIZONTALLY. THE FOLLOWING EXCEPTIONS STILL DO NOT ELIMINATE THE 2ND PAIR OF WIRES. THEY ALLOW YOU TO USE A SINGLE RACEWAY AND ELIMINATE THE SEPARATION FOR THESE CONDITIONS.

- WHEN MAXIMUM CABLE, ENCLOSURE, OR RACEWAY IS LESS THAN 10 FEET. NO LIMIT TO NUMBER OF DEVICES.
- UNLIMITED CONDUIT OR RACEWAY DROP TO AN INDIVIDUAL DEVICE.
- UNLIMITED CONDUIT OR RACEWAY DROP TO A ROOM NOT EXCEEDING 1000 SQ. FT. NO LIMIT TO THE NUMBER OF DEVICES.

## RECORD DRAWINGS

AS-BUILT / RECORD DRAWING REQUIREMENTS:  
THE FOLLOWING INFORMATION SHOULD BE RECORDED ON A SEPARATE SET OF DRAWINGS FOR EACH PROJECT:

- ANY CHANGES IN THE LOCATION OF ANY ASSOCIATED FIRE ALARM OR INTERFACE EQUIPMENT, CONTROL PANELS, ANNUNCIATORS, DETECTORS, CONTROL RELAYS, INPUT AND OUTPUT MODULES, TERMINAL CABINETS, ETC.
- ANY CHANGES TO CIRCUIT WIRING. THIS INCLUDES DELETION OR ADDITIONAL WIRING RUNS, ANY RE-ROUTING OF CIRCUIT WIRING, ANY ADDITIONS OR DELETIONS TO THE NUMBER, LOCATION, AND ORDER OF DEVICE WIRING ON A CIRCUIT.
- ADDRESSES AND/OR LABELS FOR ALL ADDRESSABLE DEVICES.
- CANDELA SETTINGS OF ALL VISUAL NOTIFICATION DEVICES.
- WATTAGE TAP SETTINGS OF ALL SPEAKER NOTIFICATION DEVICES.

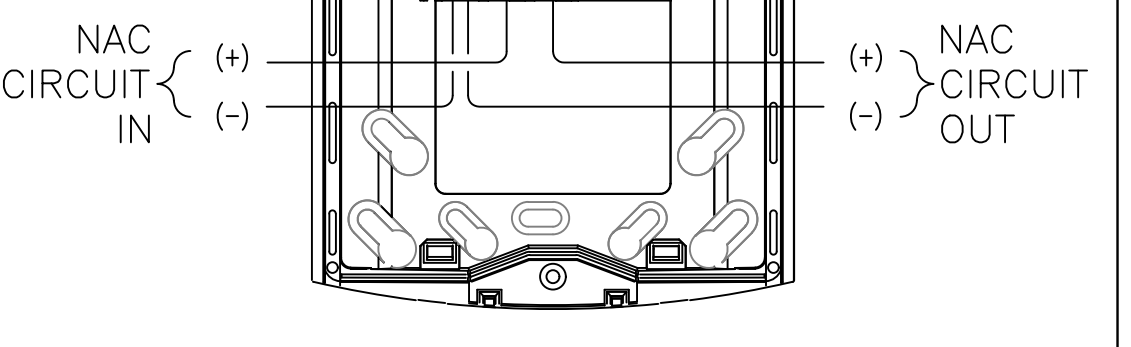
ANY CHANGES SHALL BE DISCUSSED WITH THE ADT PROJECT MANAGER TO ENSURE SYSTEM AND CODE PARAMETERS ARE MET. ADT COMMERCIAL SHALL NOT BE HELD ACCOUNTABLE FOR CHANGES MADE WITHOUT APPROVAL.

THIS INFORMATION SHALL BE NEAT AND LEGIBLE WHEN PRESENTED TO THE TECHNICIAN AT THE CONCLUSION OF THE PROJECT. PLEASE NOTE CONTACT INFORMATION ON DRAWINGS FOR INDIVIDUALS WITH FAMILIARITY OF INSTALLATION IN THE EVENT QUESTIONS ARISE DURING THE CLOSEOUT PROCESS.

MOUNTING BOX OPTIONS		
2-WIRE INDOOR PRODUCTS	4-WIRE INDOOR PRODUCTS	K SERIES PRODUCTS
4 X 4 X 1-1/2, SINGLE GANG, DOUBLE GANG, 4" OCTAGON	4 X 4 X 1-1/2, DOUBLE GANG, 4" OCTAGON	SA-WBB/ W (WALL), SA-WBBC/ CW (CEILING)

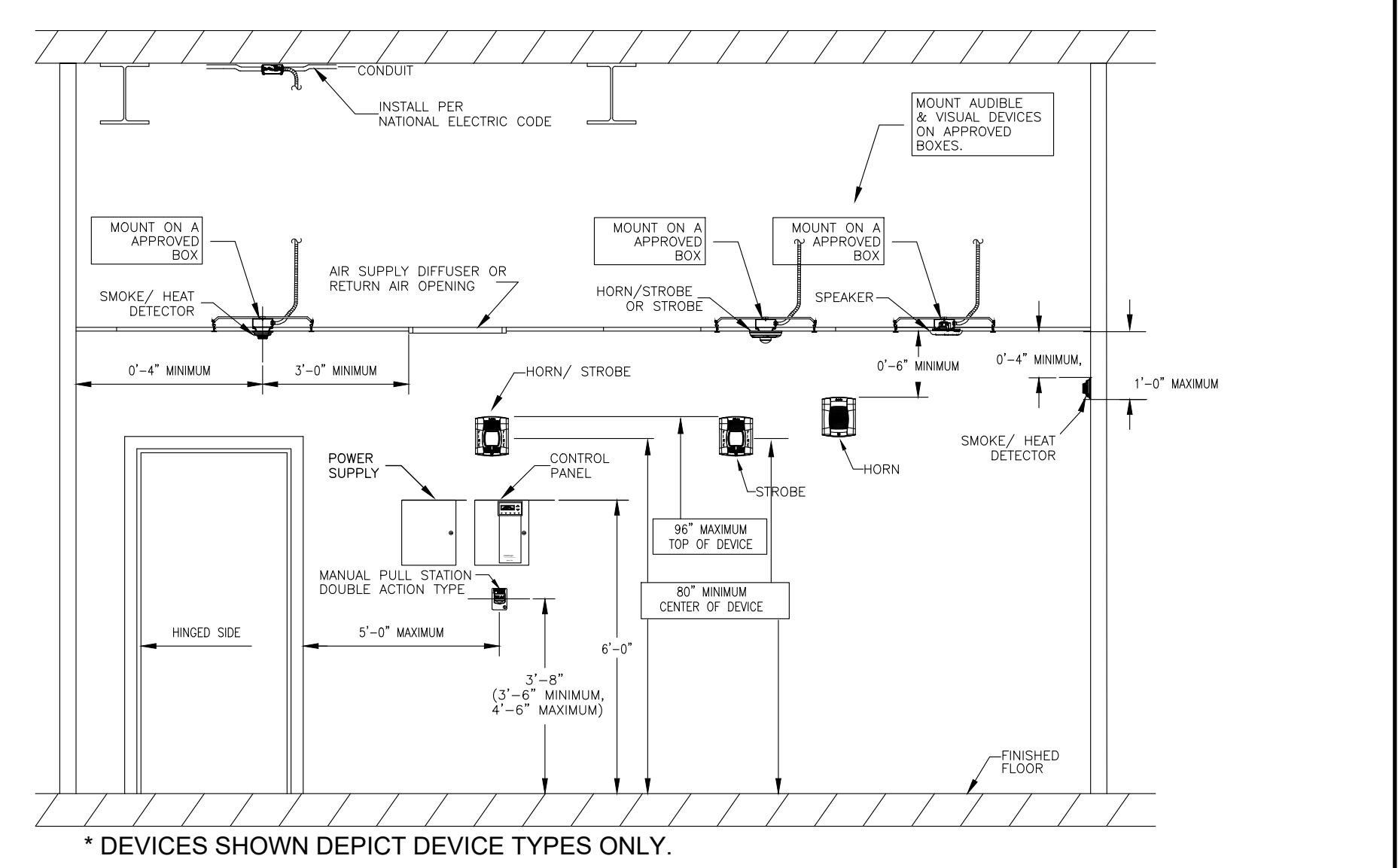
### MOUNTING NOTES:

- ADJUST THE SLIDE SWITCH ON THE REAR OF THE PRODUCT TO POSITION THE DESIRED CANDELA SETTING IN THE SMALL WINDOW ON THE FRONT OF THE UNIT.
- ATTACH MOUNTING PLATE TO THE JUNCTION BOX.
- CONNECT FIELD WIRING TO TERMINALS, AS SHOWN AT RIGHT.
- ATTACH THE PRODUCT TO THE MOUNTING PLATE AND SECURE WITH THE SCREW PROVIDED.
- IF AT ALL POSSIBLE, WEATHERPROOF AUDIBLE/VISUAL DEVICES SHALL NOT BE INSTALLED WHERE DIRECT CONTACT WITH THE ELEMENTS MAY OCCUR, KEEP DEVICE UNDER AN AWNING OR CANOPY.



NAC DEVICE INSTALLATION DETAIL  
SCALE: NONE

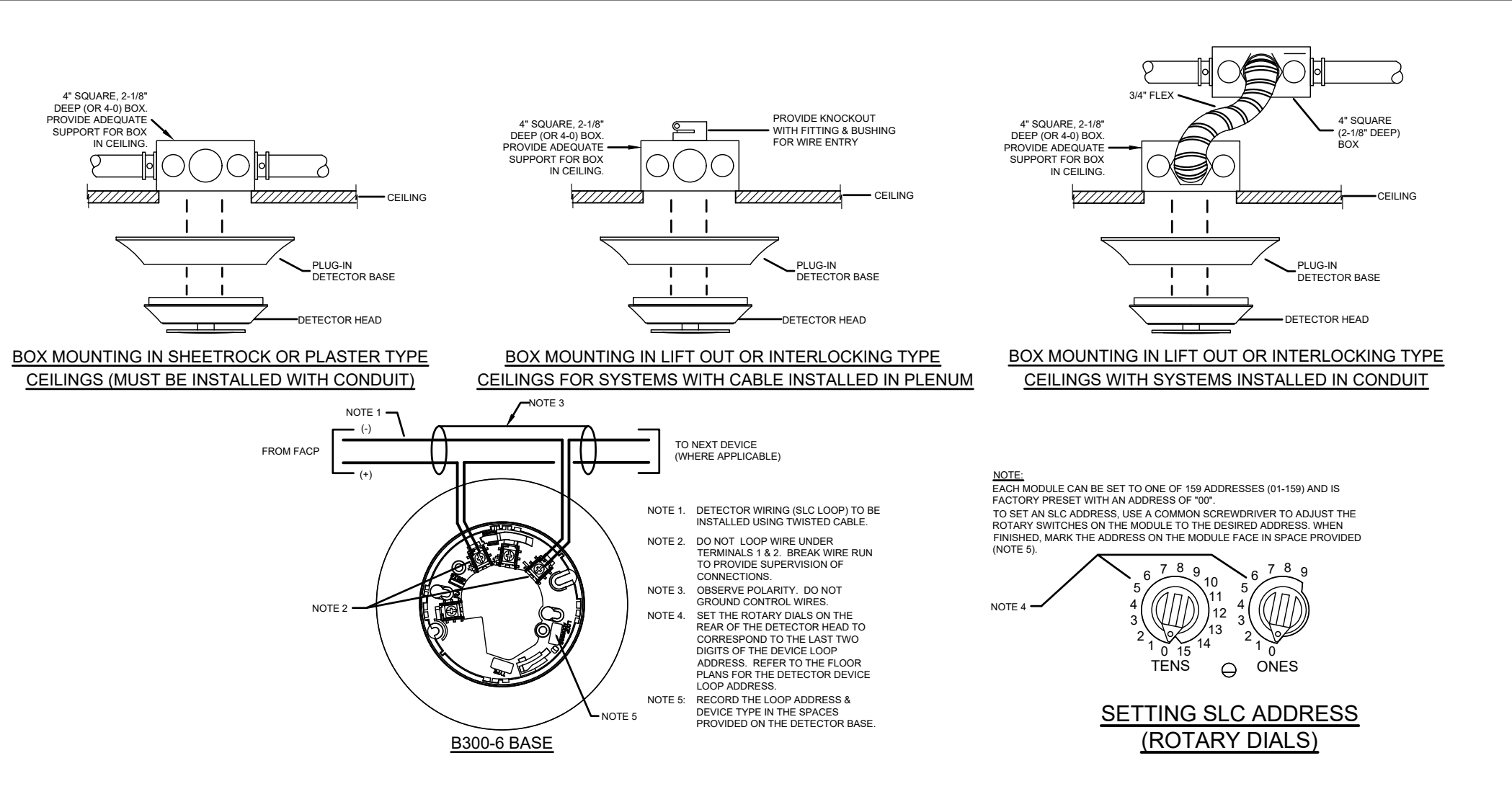
## MOUNTING HEIGHTS



\* DEVICES SHOWN DEPICT DEVICE TYPES ONLY.  
NFPA 72 AND ADA DEVICE INSTALLATION REQUIREMENTS

### FIRE ALARM SYSTEM OPERATIONAL MATRIX

CAUSE	ALARM		TROUBLE		SUPERVISORY		ELEVATOR FUNCTIONS		EQUIPED FUNCTION
	ALARM AT FACP	ALARM AT REMOTE ANNUNCIATOR	TROUBLE AT FACP	TROUBLE AT REMOTE ANNUNCIATOR	SUPERVISORY AT FACP	SUPERVISORY AT REMOTE ANNUNCIATOR	RECALL ELEVATORS TO 1ST FLOOR AND STOP	RECALL ELEVATORS TO 2ND FLOOR AND STOP	
MANUAL PULL STATION	•	•							•
AREA SMOKE / BEAM / HEAT DETECTOR	•	•							•
DUCT SMOKE DETECTOR						•			•
SMOKE DETECTOR AT 1ST FLOOR ELEV. LOBBY	•	•						•	•
SMOKE/HEAT DETECTOR AT ELEV. LOBBIES EXCEPT 1ST FLOOR	•	•							•
SMOKE SMOKE DETECTOR AT ELEV. MACHINE ROOM	•	•						•	•
HEAT DETECTOR AT ELEV. MACHINE ROOM	•	•						•	•
WATERFLOW SWITCH	•	•	•	•					
TAMPER SWITCH					•	•			
AC POWER FAILURE					•	•			
FIRE ALARM SYSTEM LOW BATTERY, OPEN CIRCUIT, GROUND FAULT, NAC SHORT, GENERAL TROUBLE			•	•					



DETECTOR BASE & BACKBOX MOUNTING ISOMETRICS  
SCALE: NONE

### NOTIFIER System Power Requirements

Parameter	Value	Unit	Status
AC Branch Current Requirements	5.00	AMPS @ 120 VAC	<input checked="" type="checkbox"/> Check
Primary Standby Load	0.42	Amps	<input checked="" type="checkbox"/> Check
Primary Alarm Load	0.51	Amps	<input checked="" type="checkbox"/> Check
Secondary Load Requirements	13.88	Amp Hours	<input checked="" type="checkbox"/> Check
Battery Selection	18	Amp Hours	<input checked="" type="checkbox"/> Check

### NOTIFIER Device Current Draw

Part Number	Qty	Primary Non-Alarm	Primary Alarm	Secondary Non-Alarm
CP24-640	1	0.25000	0.25000	0.25000
FDU-80	1	0.06430	0.06430	0.06430
FSP-851	205	0.06150	0.06150	0.06150
RTS151	10	0.02000	0.02000	0.02000
NBG-12LX	18	0.00675	0.00675	0.00675
FDM-1	2	0.00070	0.00070	0.00070
FCM-1	6	0.00291	0.00291	0.00291
FPM-1	8	0.00230	0.00230	0.00230
FSP-351	17	0.00340	0.00340	0.00340
SLC Loop Device Activation Current	1	0.00000	0.00000	0.00000
<b>Total (Amperes):</b>		<b>0.4209 A</b>	<b>0.5143 A</b>	<b>0.4609 A</b>

Part #	Description	Output Type >>>				Total Qty
		Standby	Alarm	Output #3	Output #4	
PC2W	Wall Horn w/ Strobe set at 15cd	0.0000	0.0980			0
PC2W	Wall Horn w/ Strobe set at 30cd	0.0000	0.1120			0
PC2W	Wall Horn w/ Strobe set at 75cd	0.0000	0.1680			0
PC2W	Wall Horn w/ Strobe set at 95cd	0.0000	0.1900	4	3	7
PC2W	Wall Horn w/ Strobe set at 110cd	0.0000	0.2100			0
SW	Wall Strobe set at 15cd	0.0000	0.0710		1	1
SW	Wall Strobe set at 30cd	0.0000	0.0860			0
SW	Wall Strobe set at 75cd	0.0000	0.1530			0
SW	Wall Strobe set at 95cd	0.0000	0.1760			0
SW	Wall Strobe set at 110cd	0.0000	0.1950			0
PC2W	Ceiling Horn w/ Strobe set at 15cd	0.0000	0.0880	1	1	2
PC2W	Ceiling Horn w/ Strobe set at 30cd	0.0000	0.1120	5	3	8
PC2W	Ceiling Horn w/ Strobe set at 75cd	0.0000	0.1680			0
PC2W	Ceiling Horn w/ Strobe set at 95cd	0.0000	0.1900	4		4
PC2W	Ceiling Horn w/ Strobe set at 110cd	0.0000	0.2100			0
SCW	Ceiling Strobe set at 15cd	0.0000	0.0710			0
SCW	Ceiling Strobe set at 30cd	0.0000	0.0860			0
SCW	Ceiling Strobe set at 75cd	0.0000	0.1530			0
SCW	Ceiling Strobe set at 95cd	0.0000	0.1760			0
SCW	Ceiling Strobe set at 110cd	0.0000	0.1950			0
SWLED	Wall Strobe set at 15cd	0.0000	0.0810			0
SWLED	Wall Strobe set at 30cd	0.0000	0.0920		1	1
SWLED	Wall Strobe set at 75cd	0.0000	0.1700			0
SWLED	Wall Strobe set at 95cd	0.0000	0.1950			0
SWLED	Wall Strobe set at 110cd	0.0000	0.2160			0
P2WLED	Wall Horn w/ Strobe set at 15cd	0.0000	0.0350			0
P2WLED	Wall Horn w/ Strobe set at 30cd	0.0000	0.0380			0
P2WLED	Wall Horn w/ Strobe set at 75cd	0.0000	0.0870		1	3
P2WLED	Wall Horn w/ Strobe set at 95cd	0.0000	0.0920			0
P2WLED	Wall Horn w/ Strobe set at 110cd	0.0000	0.0940		1	2

1) Current Draw Measurement based on: UL1971, 16-33V, FWR Input, High db & Temporal Pattern  
 2) Outdoor/WP Devices have the same Measured Current Draw as the Indoor Devices and may not be listed separately above.  
 3) When the APS is configured for "Doors", Output #4 shutdown on loss of AC Power. Therefore no "Standby" Current Draw is shown.

#### BATTERY LOAD CALC FOR APS-B:

Wire Gauge Used (avg)	14AWG	14AWG	14AWG	14AWG
Total Standby Current =	0.0919	24	350	660
Total Alarm Current =	0.2320	5	380	2215
<b>MAXIMUM CHARGER CAPACITY IS: 18AH</b>				
<b>Total AH Rated Batteries Supplied: = 8.0</b>				

ALL OTHER EXISTING POWER SUPPLY BATTERY CALCULATIONS SHALL REMAIN THE SAME.



**City of Puyallup**  
Development & Permitting Services  
**ISSUED PERMIT**

Building	Planning
Engineering	Public Works
Fire	Traffic

#### REVISIONS

NO.	DATE	REVISION
1	07/11/24 BY: L.B.	SUBMISSION
2	BY: ___	-
3	BY: ___	-
4	BY: ___	-

**CENTRAL PIERCE**  
**FIRE & RESCUE**  
**WAREHOUSE**

**FIRE ALARM SYSTEM**

BUILDING INFORMATION  
PROJECT ADDRESS:  
1019 39TH AVE SE, SUITE B30  
PAYALLUP, WA 98374

PROJECT MANAGER:  
Desiree Forquignon

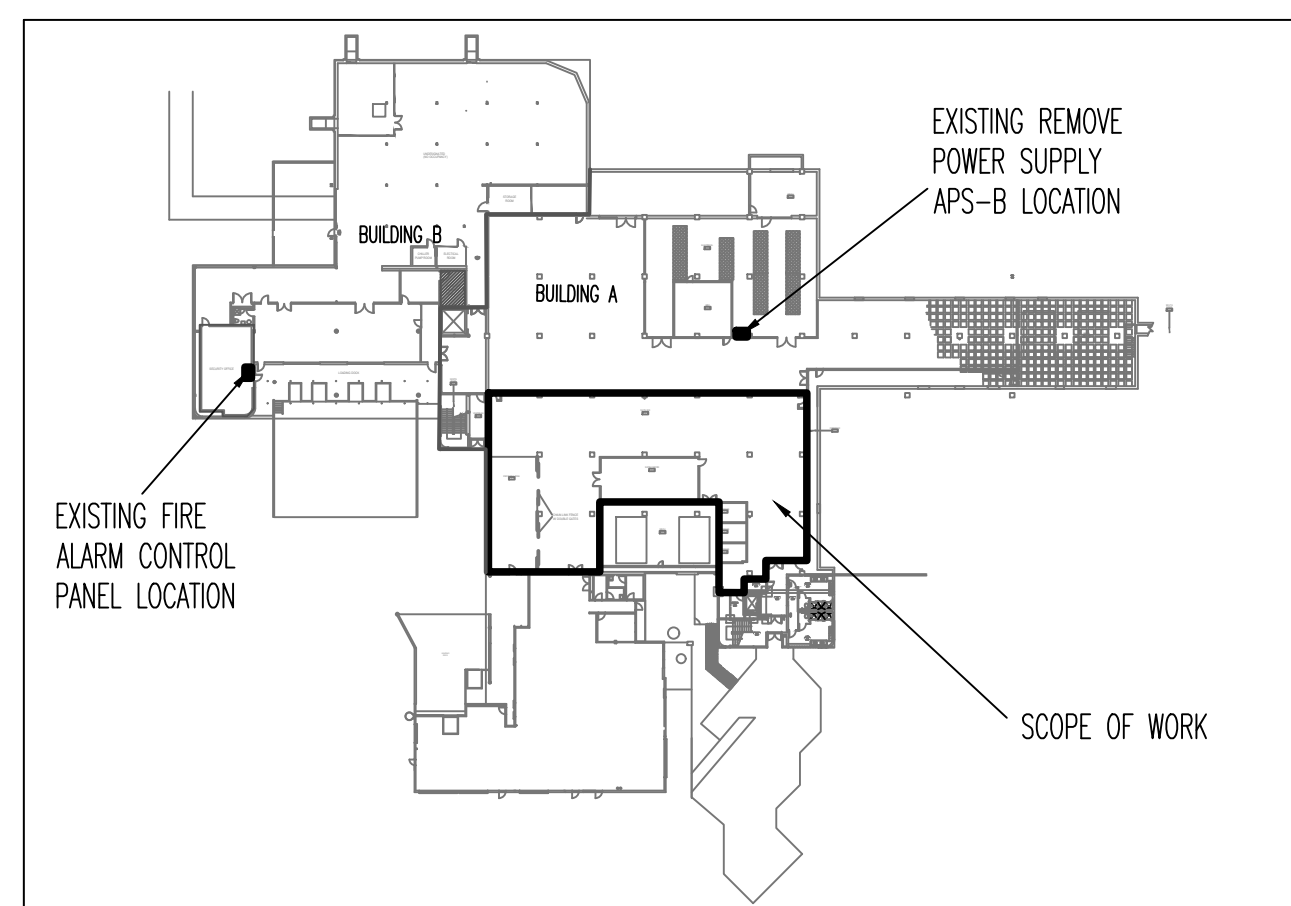
PREPARED BY: L.B.

CHECKED BY: H.S.

DATE: 07-11-2024

PROJECT NO: 501840961

TITLE:  
PROJECT NOTES  
FA-0-2



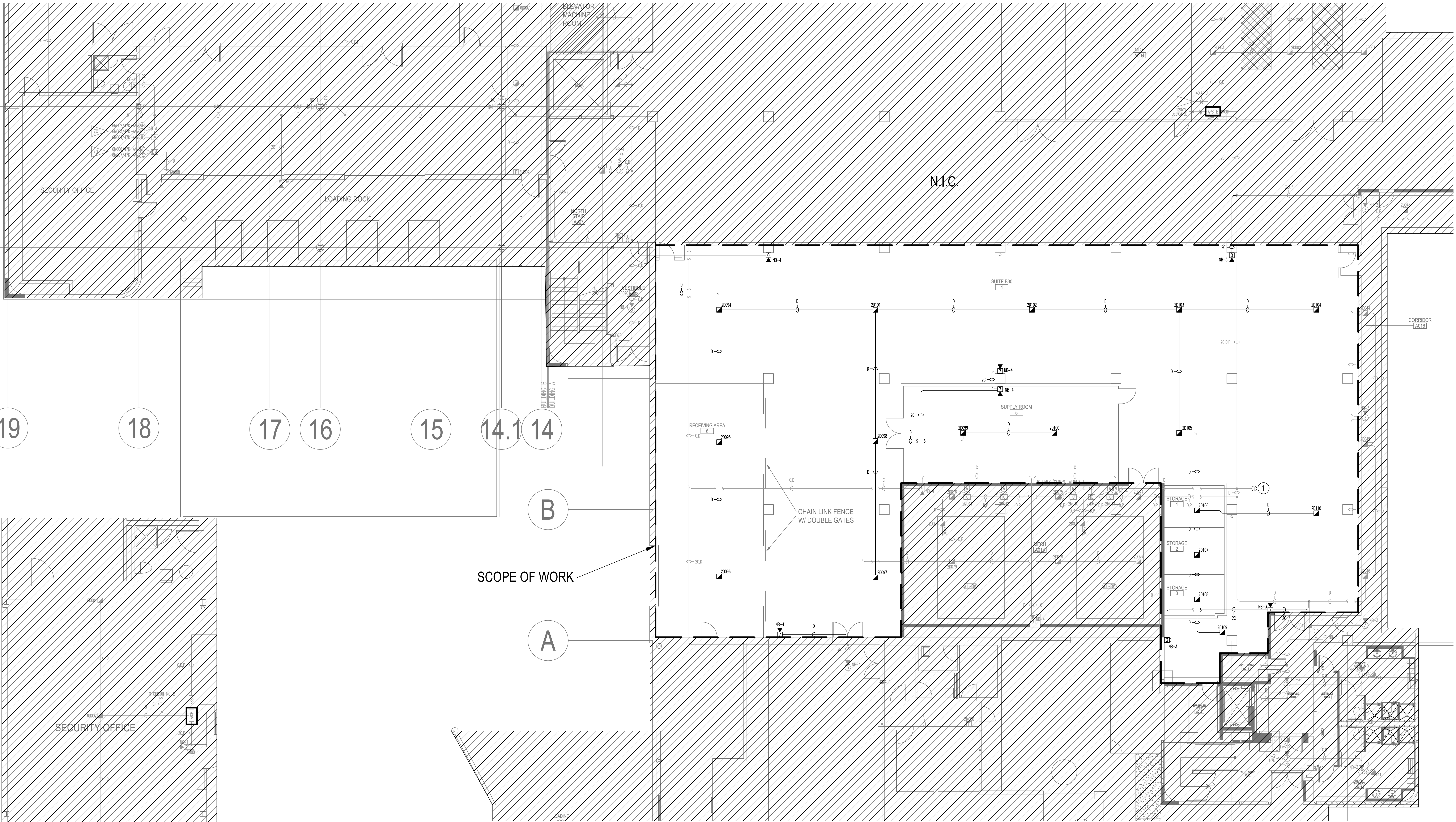
**3** KEY PLAN  
SCALE: N.T.S.

**GENERAL NOTES:**

- HATCHED AREAS ARE NOT IN THE SCOPE OF WORK
- ALL EXISTING DEVICES AND WIRES ARE REFLECTED IN LIGHTER COLOR AND SHALL REMAIN, UNLESS OTHERWISE NOTED

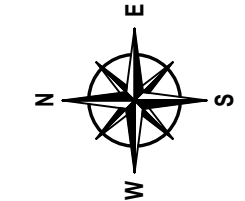
**SHEET NOTES:**

- ① EXISTING DEVICE TO BE DEMOLISHED AND REPLACED WITH J-BOX.



**2** SECURITY OFFICE DETAIL // (E)FACP LOCATION  
SCALE: N.T.S.

**1** FIRE ALARM PLAN - PARTIAL BASEMENT  
SCALE: 1/8" = 1'-0"



**ADT Commercial**  
600 Oakesdale Ave. SW  
Suite 100  
Renton, WA 98057  
adt.com/commercial

City of Puyallup  
Development & Permitting Services  
**ISSUED PERMIT**

Building	Planning
Engineering	Public Works
Fire	Traffic

REVISIONS

NO.	DATE	REVISION
△	07/11/24 BY: L.B.	SUBMISSION
△	BY: _____	-
△	BY: _____	-
△	BY: _____	-
△	BY: _____	-

**CENTRAL PIERCE  
FIRE & RESCUE  
WAREHOUSE**

**FIRE ALARM SYSTEM**

BUILDING INFORMATION  
PROJECT ADDRESS:  
1019 39TH AVE SE, SUITE B30  
PAYALLUP, WA 98374

PROJECT MANAGER:  
**Desiree Forquignon**

PREPARED BY: **L.B.**

CHECKED BY: **H.S.**

DATE: **07-11-2024**

PROJECT NO: **501840961**

TITLE:  
**FIRE ALARM PLAN  
PARTIAL BASEMENT**

SHEET:  
**FA-1-1**

**GENERAL NOTES:**

- HATCHED AREAS ARE NOT IN THE SCOPE OF WORK
- ALL EXISTING DEVICES AND WIRES ARE REFLECTED IN LIGHTER COLOR AND SHALL REMAIN, UNLESS OTHERWISE NOTED



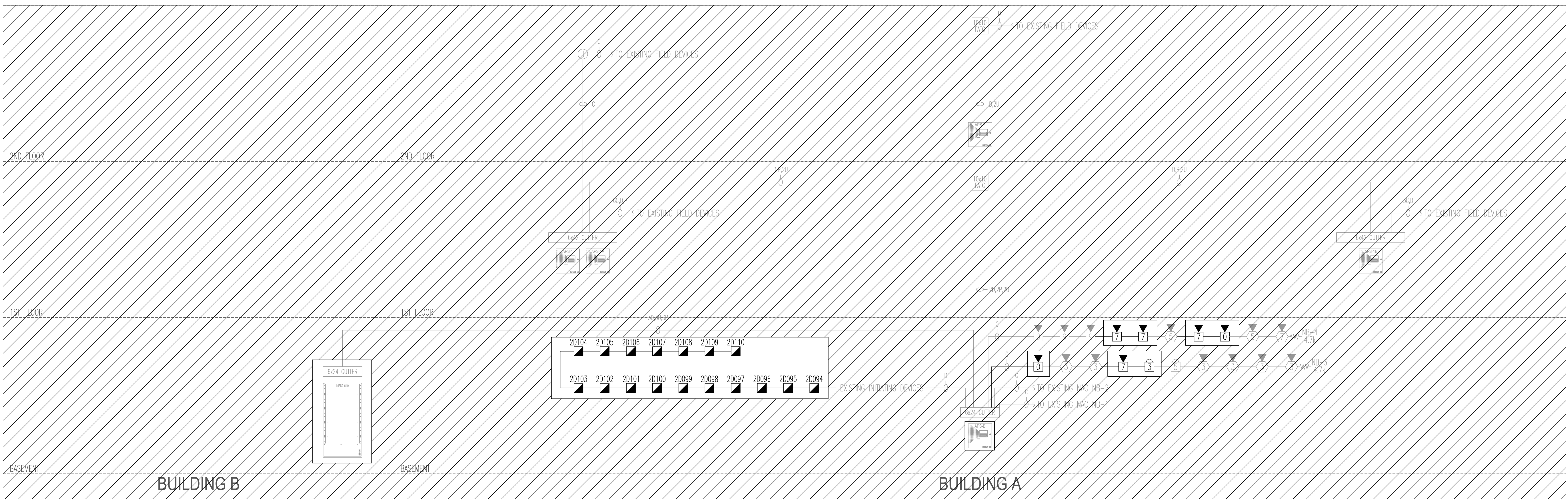
600 Oakesdale Ave. SW  
Suite 100  
Renton, WA 98057  
adt.com/commercial

**City of Puyallup**  
Development & Permitting Services  
**ISSUED PERMIT**

Building	Planning
Engineering	Public Works
Fire	Traffic

**REVISIONS**

NO.	DATE	REVISION
△	07/11/24 BY: L.B.	SUBMISSION
△	BY: ___	-
△	BY: ___	-
△	BY: ___	-
△	BY: ___	-



**CENTRAL PIERCE  
FIRE & RESCUE  
WAREHOUSE**

**FIRE ALARM SYSTEM**

**BUILDING INFORMATION**  
PROJECT ADDRESS:  
1019 39TH AVE SE, SUITE B30  
PAYALLUP, WA 98374

**PROJECT MANAGER:**  
Desiree Forquignon

**PREPARED BY:** L.B.

**CHECKED BY:** H.S.

**DATE:** 07-11-2024

**PROJECT NO:** 501840961

**TITLE:**  
PARTIAL FIRE ALARM  
RISER DIAGRAM

**SHEET:**  
FA-2-1