

HOMEWOOD SUITES  
 3500 S. MERIDIAN  
 PUYALLUP, WA 98373

APPROVED PLAN  
 CITY OF PUYALLUP  
 PLANNING DIVISION

APPROVED BY: ARamirez

DATE: 08/08/2024


CASE NO.: PRSG20241236

CONDITIONS:

**City of Puyallup  
 Development  
 Engineering  
 APPROVED**

See permit conditions.

AHunt  
 08/21/2024  
 12:53:23 PM

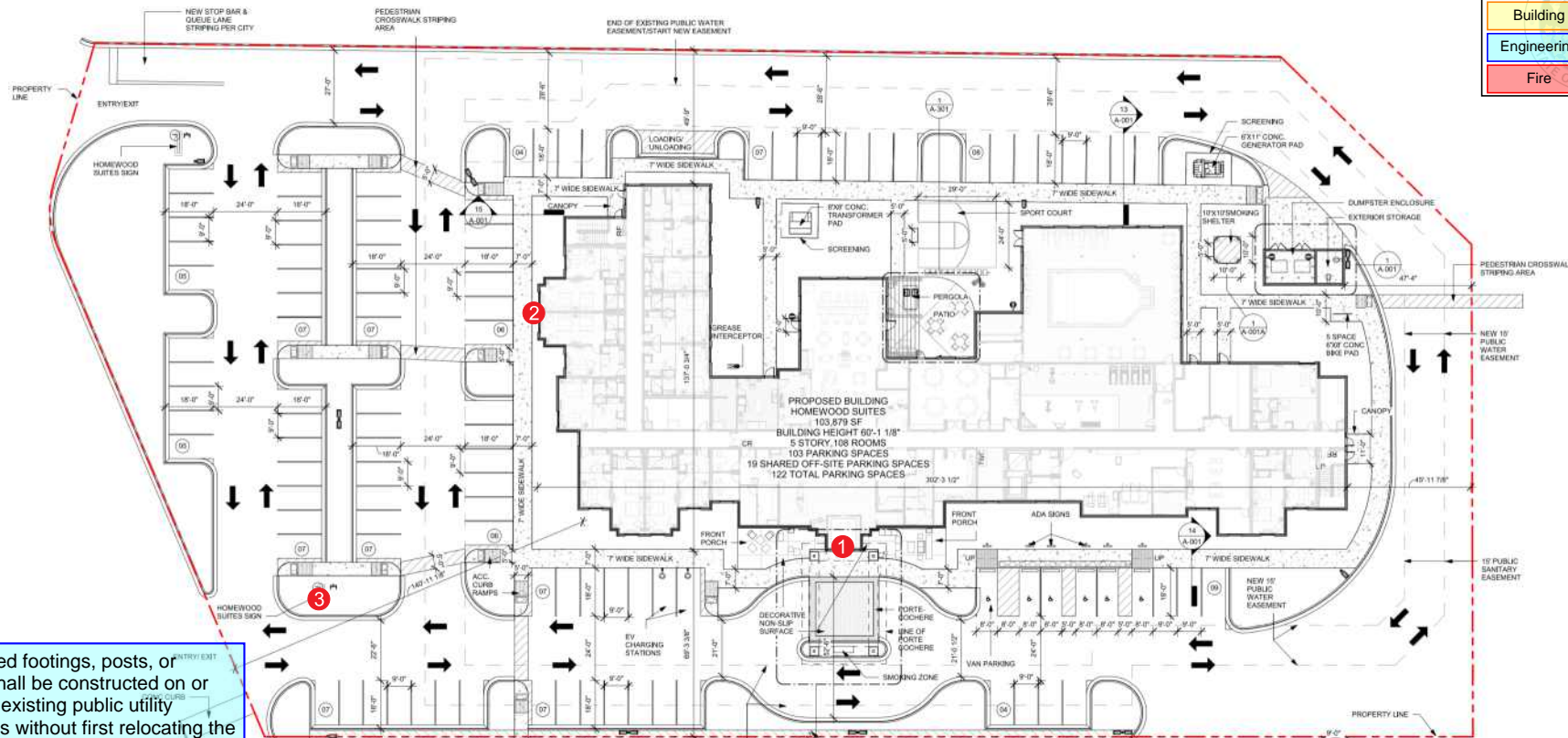


PROPOSED SIGNS:

- 1 30" CHANNEL LETTER SET
- 2 30" CHANNEL LETTER SET
- 3 3'-0" X 7'-5" MONUMENT AT 6'-0" OAH

**City of Puyallup  
 Development & Permitting Services  
 ISSUED PERMIT**

Building	Planning
Engineering	Public Works
Fire	Traffic



No proposed footings, posts, or supports shall be constructed on or above any existing public utility connections without first relocating the utility services or protecting it in place.



Customer: <b>HOMEWOOD SUITES</b>	Date: <b>06/26/24</b>	Prepared By: <b>CTM/JR/AHD</b>	Note: color output may not be exact when viewing or printing this drawing. All colors used are PMS or the closest CMYK equivalent. If these colors are incorrect, please provide the correct PMS match and a revision to this drawing will be made.
Location: <b>PUYALLUP, WA</b>	File Name: <b>173100 - R3 - PUYALLUP, WA</b>		Eng: -



Persona Signs, LLC  
 700 21st Street Southwest  
 PO Box 210  
 Watertown, SD 57201-0210  
 1.800.843.9888 • www.personasigns.com