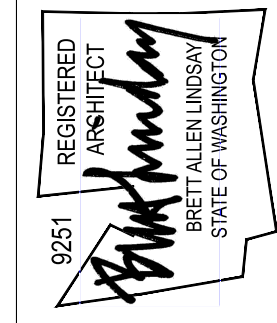




SYNTHESIS 9, LLC
5214 8TH ST
TACOMA, WA 98403

RELEASE OF DOCUMENTS
THIS DOCUMENT AND THE EXHIBITS HERETO
INCORPORATED HEREIN AS PERMITTED BY
PROFESSIONAL SERVICE ARE THE PROPERTY OF
SYNTHESIS 9, LLC AND ARE NOT TO BE USED OR
REPRODUCED IN WHOLE OR IN PART WITHOUT THE
WRITTEN AUTHORIZATION OF SYNTHESIS 9, LLC.



**City of Puyallup
Development
Engineering
APPROVED**

See permit for additional requirements.

Linda Lian
04/04/2024
11:05:39 AM

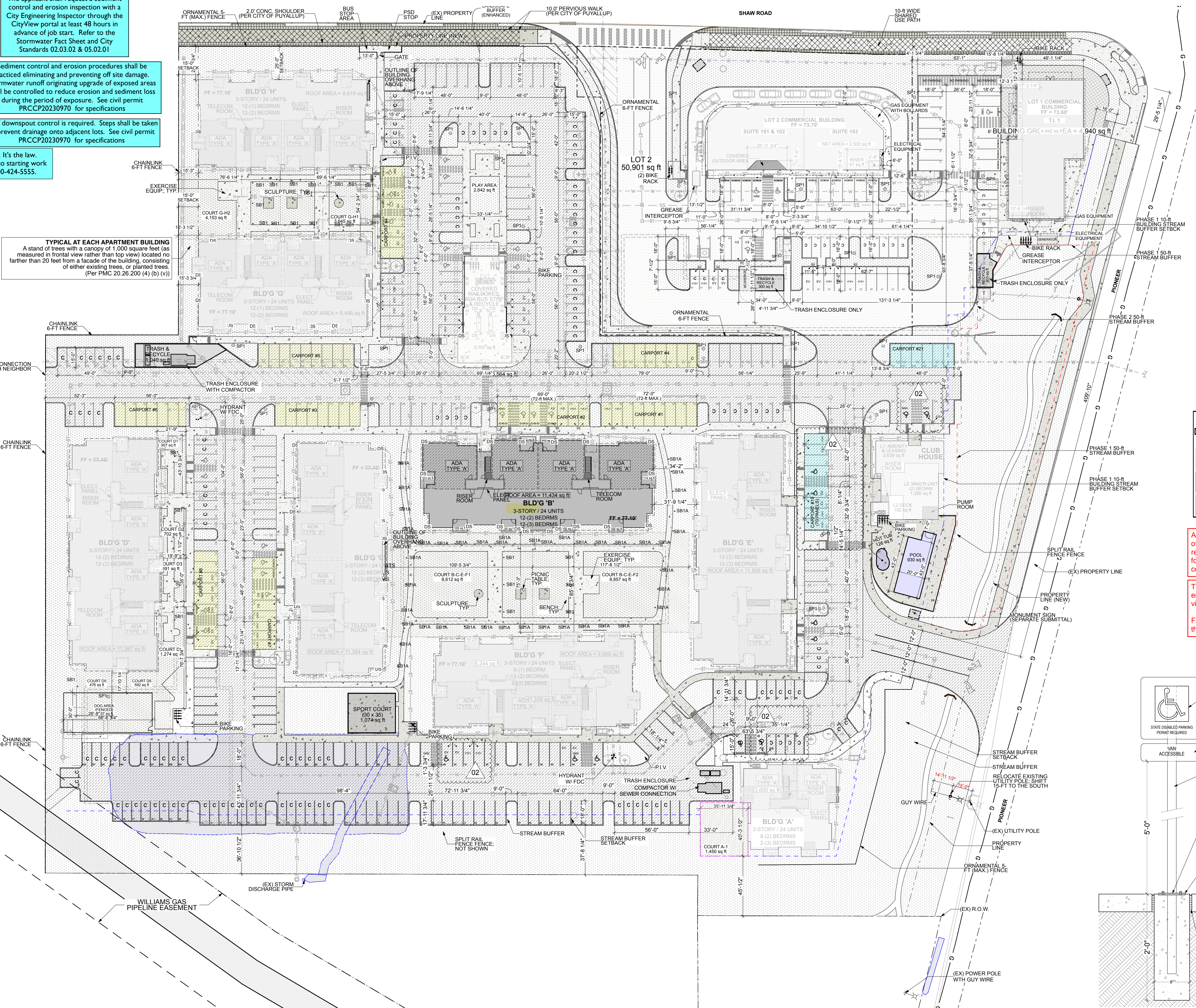
The applicant shall request a sediment control and erosion inspection with a City Engineering Inspector through the CityView portal at least 48 hours in advance of job start. Refer to the Stormwater Fact Sheet and City Standards 02.03.02 & 05.02.01

Sediment control and erosion procedures shall be practiced eliminating and preventing off site damage. Stormwater runoff originating upgrade of exposed areas shall be controlled to reduce erosion and sediment loss during the period of exposure. See civil permit PRCCP20230970 for specifications

Roof downspout control is required. Steps shall be taken to prevent drainage onto adjacent lots. See civil permit PRCCP20230970 for specifications

Call Before You Dig. It's the law. Locate all utilities prior to starting work. Dial 811 or call 1-800-424-5555.

TYPICAL AT EACH APARTMENT BUILDING
A stand of trees with a canopy of 1,000 square feet (as measured in frontal view rather than top view) located no farther than 20 feet from a facade of the building, consisting of either existing trees, or planted trees.
(Per PMC 20.26.200 (4) (b) (v))



ACCESSIBLE MAILBOX REQUIREMENTS

905.1 General. Accessible storage facilities shall comply with ICC A117.1, Section 905.
905.2 Clear Floor Space. A clear floor space complying with ICC A117.1, Section 305 shall be provided.
905.3 Height. Accessible storage elements shall comply with at least one of the reach ranges specified in ICC A117.1, Section 308.
905.4 Operable Parts. Operable parts of storage facilities shall comply with ICC A117.1, Section 309.

309.4 Operation. Operable parts shall be operable with one hand and shall not require tight grasping, pinching, or twisting of the wrist. The force required to activate operable parts shall be 5.0 pounds maximum.

308.2 Forward Reach.
308.2.1 Unobstructed. Where a forward reach is unobstructed, the high forward reach shall be 48 inches maximum and the low forward reach shall be 15 inches minimum above the floor.
308.3 Side Reach.
308.3.1 Unobstructed. Where a clear floor space allows a parallel approach to an element and the side reach is unobstructed, the high side reach shall be 48 inches maximum and the low side reach shall be 15 inches minimum above the floor.

LAND USE SITE LIGHTING REQUIREMENTS

1. Light trespass. Light trespass from sites in non-residential zoning districts shall not exceed 3 lux (0.3 foot candles) at parcel boundaries with residential zoning districts. This luminance value shall be measured at the eye in a plane perpendicular to the line-of-sight when looking at the brightest source in the field of view at any point on the property line of any residential parcel.
2. Residential light pollution. To ensure control of and to minimize glare, any lighting within 100 feet of an R District shall use luminaries which meet the Illuminating Engineering Society's cutoff light distribution specification.
3. General light pollution. To control and minimize glare, all other luminaries for area and/or off-street parking shall meet the Illuminating Engineering Society's semi-cutoff light distribution specification. Lighting shall be directed toward the site, with cutoff shields or other means, to prevent spillover glare to adjacent properties or vehicular traffic. Luminaires with a light source not greater than 1800 lumens (100 watt incandescent) are exempt from this requirement.

**City of Puyallup
Development & Permitting Services
ISSUED PERMIT**

Building	Planning
Engineering	Public Works
Fire	Traffic

Approval of submitted plans is not an approval of omissions or oversights by this office or non compliance with any applicable regulations of local government. The contractor is responsible for making sure that the building complies with all applicable codes and regulations of the local government.

The approved construction plans, documents, and all engineering must be posted on the job at all inspections in a visible and readily accessible location.

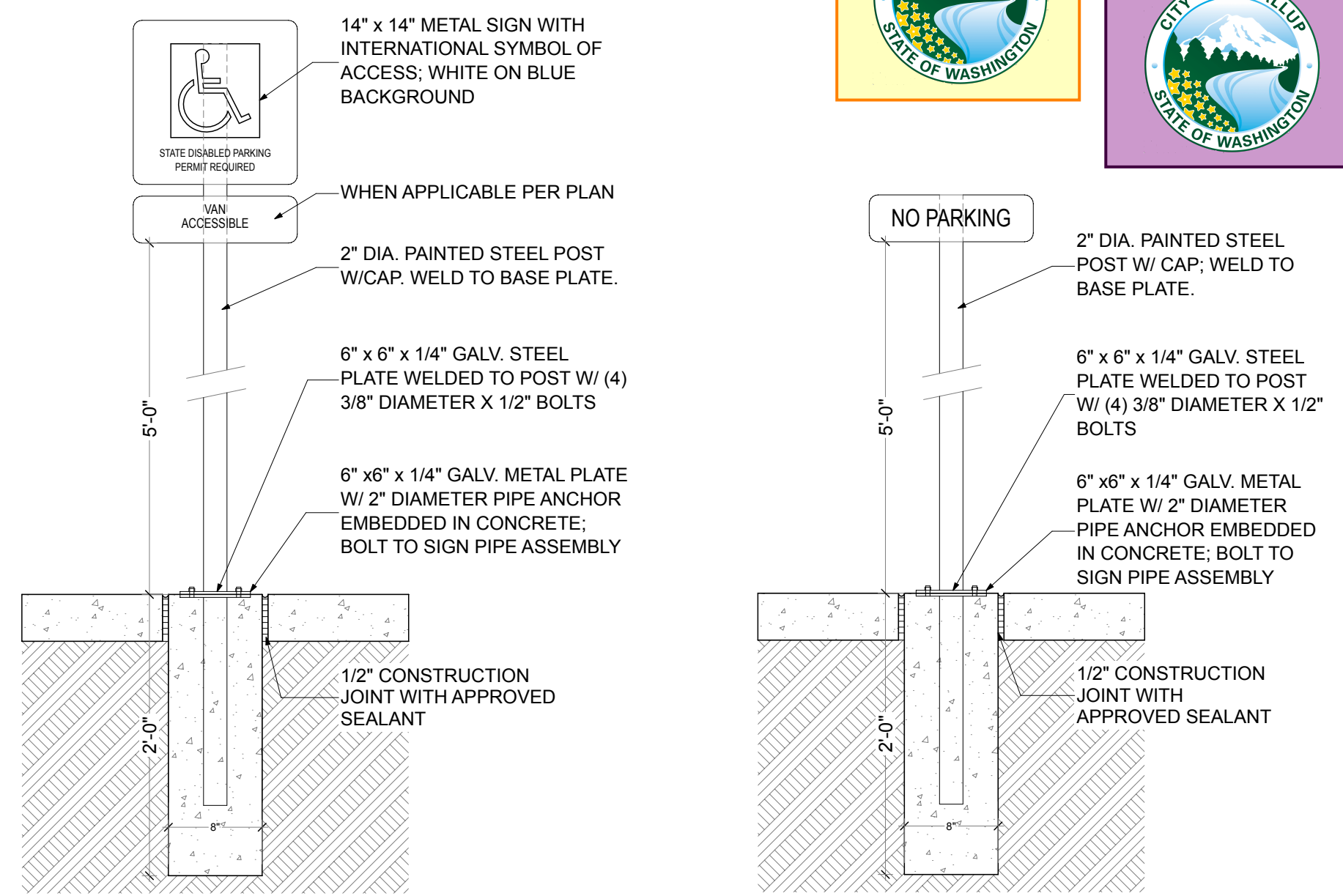
Full sized legible color plans are required to be provided by the permittee on site for inspection.

**City of Puyallup
Building
REVIEWED
FOR
COMPLIANCE**

Bsnowden
05/13/2024
2:33:21 PM

**City of Puyallup
Planning
Division
APPROVED**

See permit conditions.
Chris BEALE
04/04/2024
8:46:24 AM



4 OVERALL SITE PLAN - PHASE 1 & 2
SCALE: 1" = 40'

2 SITE SIGNAGE
SCALE: 1" = 1'-0"

AGENCY REVIEW - REVISION No.2 | 24.09.30

REVISIONS
01 RESPONSE TO 1ST REVIEW, 2024.08.05
02 RESPONSE TO 2ND REVIEW, 2024.09.30

REVISIONS
DRAWN BY: BL / CM
CHECKED BY: BL
DATE: 24.09.30
TITLE: SITE PLAN REF ONLY
PROJECT #: 2016
SHEET:

AS1.0

EAST TOWN CROSSING
BUILDING 'B'
PIONEER & SHAW PUYALLUP WA