

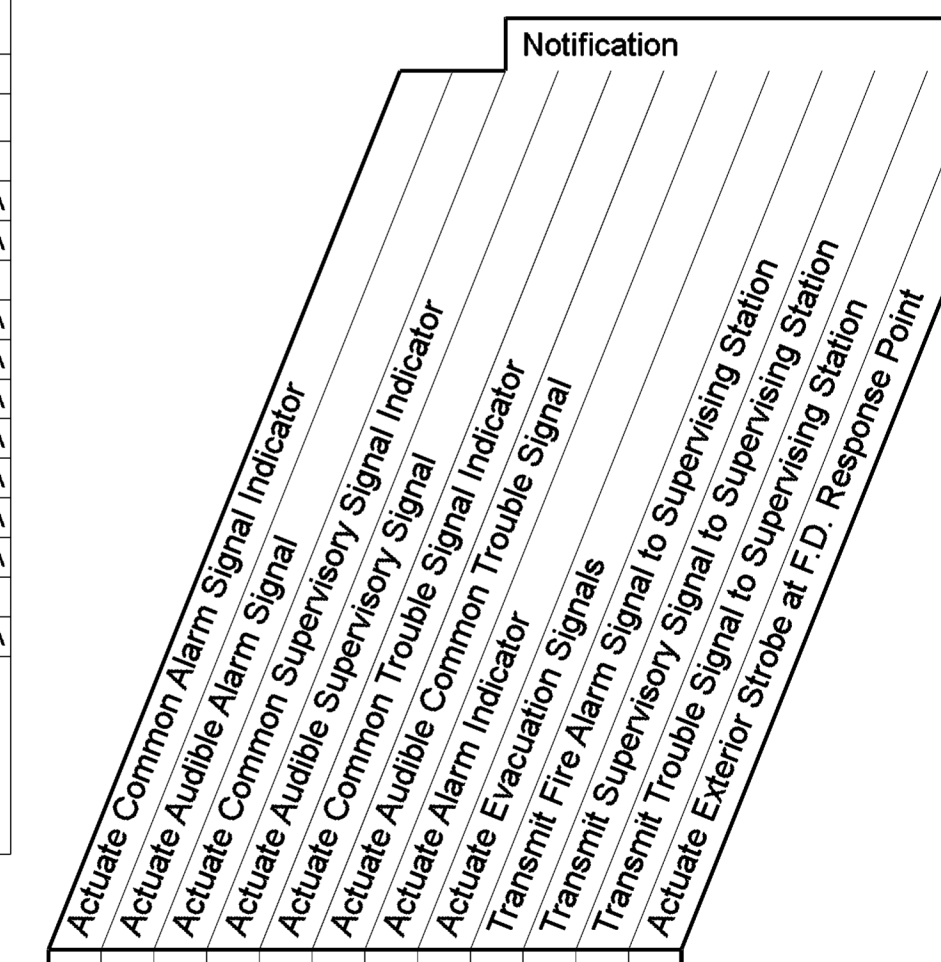
Symbol Legend

SYMBOL	DESCRIPTION	MANUFACTURER	PART NUMBER	MODEL	QUANTITY
[FACP]	GWF-7075, INTELLIGENT FACP, RED	GAMEWELL FCI	GWF-7075	GWF-7075	1
[DOC]	DOCUMENT STORAGE BOX, 12 IN. X 13 IN. X 2.25 IN. W/4GB FLASH DRIVE	SPACEAGE	SSU00685	FAD	1
[S <sub>o</sub> ]	PHOTO, SMOKE, DETECTOR, BRIGHT WHITE	GAMEWELL FCI	ASD-PL3	ASD-PL3	1
[MM]	MONITOR MODULE, ADDRESSABLE, CLASS B	GAMEWELL FCI	AMM-2F	AMM-2F	1
[MM <sub>2</sub> ]	DUAL MONITOR MODULE, ADDRESSABLE, CLASS B	GAMEWELL FCI	AMM-2IF	AMM-2IF	2
[F]	PULL STATION, DOUBLE ACTION, ADDRESSABLE	GAMEWELL FCI	MS-7AF	MS-7AF	1
[WP]	HORN/STROBE, 2 WIRE, STANDARD CD, RED, OUTDOOR	SYSTEM SENSOR	P2RK	P2RK	1
[EOL]	EOL-4.7K	GAMEWELL FCI	EOL-4.7	EOL-4.7	1

Battery Calculations for Panel: P1						
Part No: GWF-7075 - GWF-7075, INTELLIGENT FACP, RED						
Part No.	Qty.	Description	Standby	Total Standby	Alarm	Total Alarm
GWF-7075_MB	1	Panel Equipment	165.0000mA	165.0000mA	310.0000mA	310.0000mA
		GWF-7075_MB				
		Total Panel Stby		165.0000mA		310.0000mA
Peripheral Devices						
P2RK	1	HORN/STROBE, 2 WIRE, STANDARD CD, RED, OUTDOOR (Notification) 110CD 88dB	0.0000mA	0.0000mA	221.0000mA	221.0000mA
EOL-4.7	1	EOL-4.7K (Notification)	0.0000mA	0.0000mA	0.0000mA	0.0000mA
MS-7AF	1	PULL STATION, DOUBLE ACTION, ADDRESSABLE (Signaling line)	0.3000mA	0.3000mA	3.0000mA	3.0000mA
ASD-PL3	1	PHOTO, SMOKE, DETECTOR, BRIGHT WHITE (Signaling line)	0.2000mA	0.2000mA	2.0000mA	2.0000mA
AMM-2F	1	MONITOR MODULE, ADDRESSABLE, CLASS B (Signaling line)	0.3750mA	0.3750mA	0.6000mA	0.6000mA
AMM-2IF	2	DUAL MONITOR MODULE, ADDRESSABLE, CLASS B (Signaling line)	0.7500mA	1.5000mA	0.9700mA	1.9400mA
		Total Peripheral Stby		2.3750mA	Total Periph Alarm	228.5400mA
		Total Standby Amps		167.3750mA	Total Alarm Amps	538.5400mA

Standby time: 24 Hrs 4.017Ah  
 Alarm time: 5 Min 0.045Ah  
 Battery requirement: 4.062Ah  
 Compensation Factors - Standby: 1.2 Alarm: 1.2 Requirement with compensation: 4.874Ah

SYSTEM OUTPUTS



GENERAL NOTES / SCOPE OF WORK

- SYSTEM WIRING NOTED ON THE DRAWINGS IS PER MANUFACTURE AND CODE REQUIREMENTS. ANY ALTERATION TO SYSTEM WIRING, WITHOUT APPROVAL, IS AT ELECTRICAL CONTRACTOR'S OWN RISK!!
- SYSTEM WIRING SHOWN ON DRAWINGS IS DIAGRAMMATIC AND ONLY USED FOR REFERENCE PURPOSES. ACTUAL WIRE AND DEVICE INSTALLATION MAY VARY DUE TO OBSTRUCTIONS.
- WIRE SHOWN IN THIS DRAWING SET IS PERMITTED IN RACEWAYS LEADING TO FIRE PROTECTION EQUIPMENT. OTHER WIRE SHALL NOT BE PERMITTED IN THE SAME RACEWAY.
- FIRE ALARM SYSTEM INSTALLATION SHALL CONFORM WITH THE LATEST U.L., N.E.C., N.F.P.A., W.A.C., AND OTHER STANDARDS AS APPLICABLE TO THE CITY STANDARDS.
- WHEN NECESSARY, DUE TO CHANGING DESIGN REQUIREMENTS, FACTORY AVAILABILITY, ETC. FIRE SYSTEMS WEST RESERVES THE RIGHT TO SUBSTITUTE EQUIPMENT HEREIN MENTIONED OR SPECIFIED, WITH EQUIPMENT OF EQUAL OR BETTER QUALITY, FUNCTION AND DESIGN.
- PARALLEL BRANCHING (T-TAPPING) OF WIRE TO ALL NOTIFICATION APPLIANCE CIRCUITS SHALL NOT BE PERMITTED.
- FIRE SYSTEMS WEST WILL INSTALL A NEW FIRE ALARM CONTROL PANEL.
- FIRE SYSTEMS WEST WILL INSTALL A NEW SMOKE DETECTOR AND MANUAL PULL STATION AT THE FIRE ALARM CONTROL PANEL.
- FIRE SYSTEMS WEST WILL INSTALL NEW DUAL INPUT MODULES TO MONITOR THE SPRINKLER RISER SYSTEM.
- FIRE SYSTEMS WEST WILL INSTALL A NEW DUAL INPUT MODULE TO MONITOR THE KITCHEN HOOD SUPPRESSION SYSTEM.
- FIRE SYSTEMS WEST WILL INSTALL A NEW EXTERIOR NOTIFICATION DEVICE.

Circuit Calculations Panel: P1 Card: 00

Terminal Voltage: 20.4V:DC Amperage: 2.5000A  
 Cable: 14/2 SOL JKT FPLR 1M RL RED #14  
 Calculations based on Lump Sum Length.  
 Design Criteria: Ambient temperature: 167°F Max. operating voltage drop: 10%

Circuit	Description	Type	Total Len	P2RK, 110CD, 221.000mA	EOL-4.7	Total Amps	Gauge	V Drop %	V Drop	Resistance	Max Len
NAC1	Notification		90'-1 1/4"	1	1	221.000mA	#14	0.60	0.1223V	0.6 Ohms	1503'-0"

Circuit Calculations Panel: P1 Card: 00

Terminal Voltage: 16V:DC Amperage: 1.0000A  
 Cable: 18/2 SOL JKT FPLR 1M RL RED #18  
 Calculations based on Lump Sum Length.  
 Design Criteria: Ambient temperature: 167°F Max. operating voltage drop: 10%

Circuit	Description	Type	Total Len	ASD-PL3, 2.000mA	MS-7AF, 3.000mA	AMM-2IF, 0.970mA	AMM-2F, 0.600mA	Total Amps	Gauge	V Drop %	V Drop	Resistance	Max Len
SLC	Signaling line/FCI - SLC, VELOCITY		57'-1 1/4"	1	1	1	1	2.3750mA	#18	0.01	0.0021V	0.9 Ohms	43351'-0"

SYSTEM INPUTS

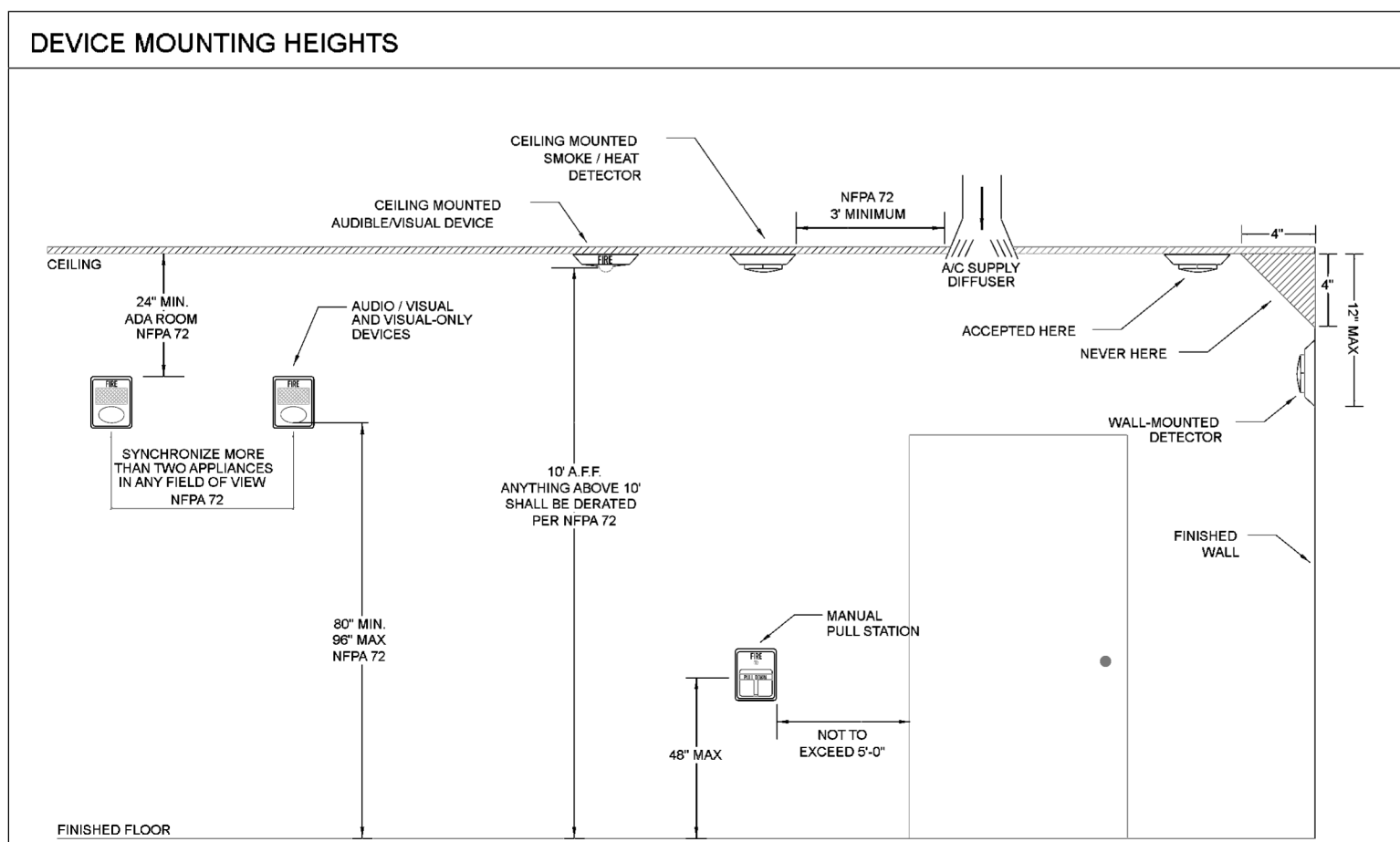
	A	B	C	D	E	F	G	H	I	J	K	L
1 Manual Fire Alarm Boxes	●	●										
2 Smoke Detectors	●	●										
3 Waterflow	●	●										
4 Sprinkler Control Valve			●	●								
5 Fire Alarm AC Power Failure			●	●								
6 Fire Alarm System Low Battery					●	●						
7 Open Circuit							●	●				
8 Ground Fault									●	●		
9 Notification Appliance Circuit Short											●	●

OPERATIONAL MATRIX

Drawing reviewed by:

Matt Carman  
 NICET Certification No. 146053  
 Fire Alarm Systems - Level III  
 Certification Expires: 11/01/2026

E-mail: mattc@firesystemswest.com  
 Phone: 253-951-6005



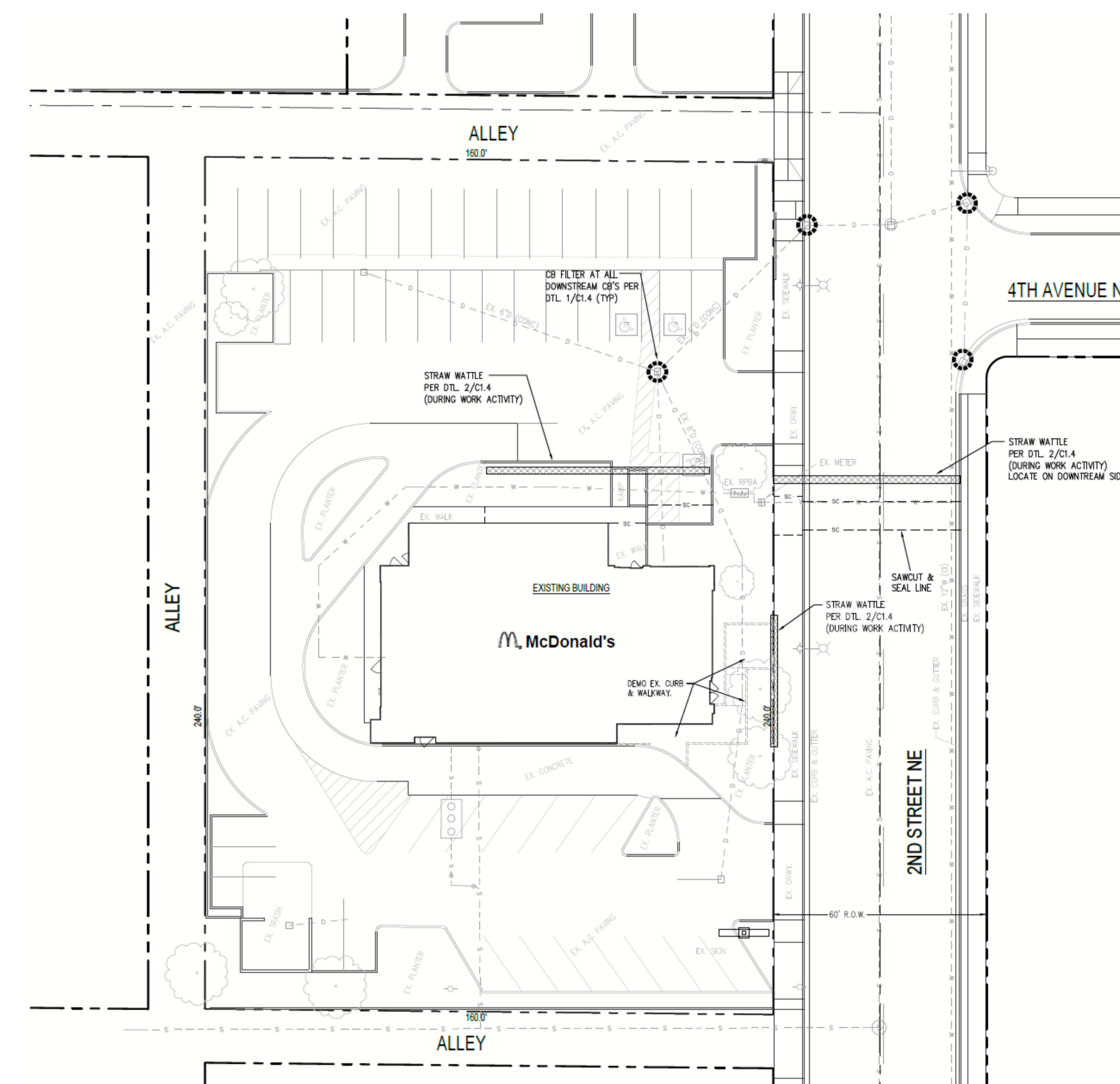
**City of Puyallup**  
 Fire  
 REVIEWED  
 FOR  
 COMPLIANCE  
 DDrake  
 10/03/2024  
 10:07:35 AM

THE APPROVED CONSTRUCTION PLANS AND ALL ENGINEERING MUST BE POSTED ON THE JOB AT ALL INSPECTIONS IN A VISIBLE AND READILY ACCESSIBLE LOCATION.

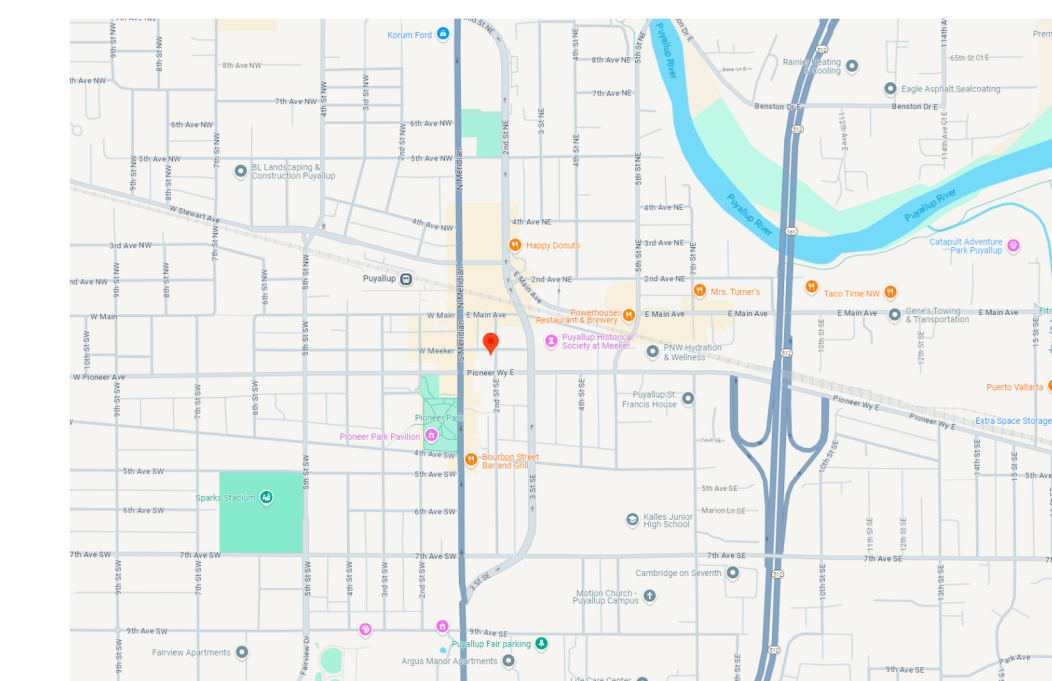
Approval of submitted plans is not an approval of omissions or oversight by this office or noncompliance with any applicable regulations of local government. The contractor is responsible for making sure that the building complies with all applicable building codes and regulations of the local government.

**City of Puyallup**  
 Development & Permitting Services  
 ISSUED PERMIT

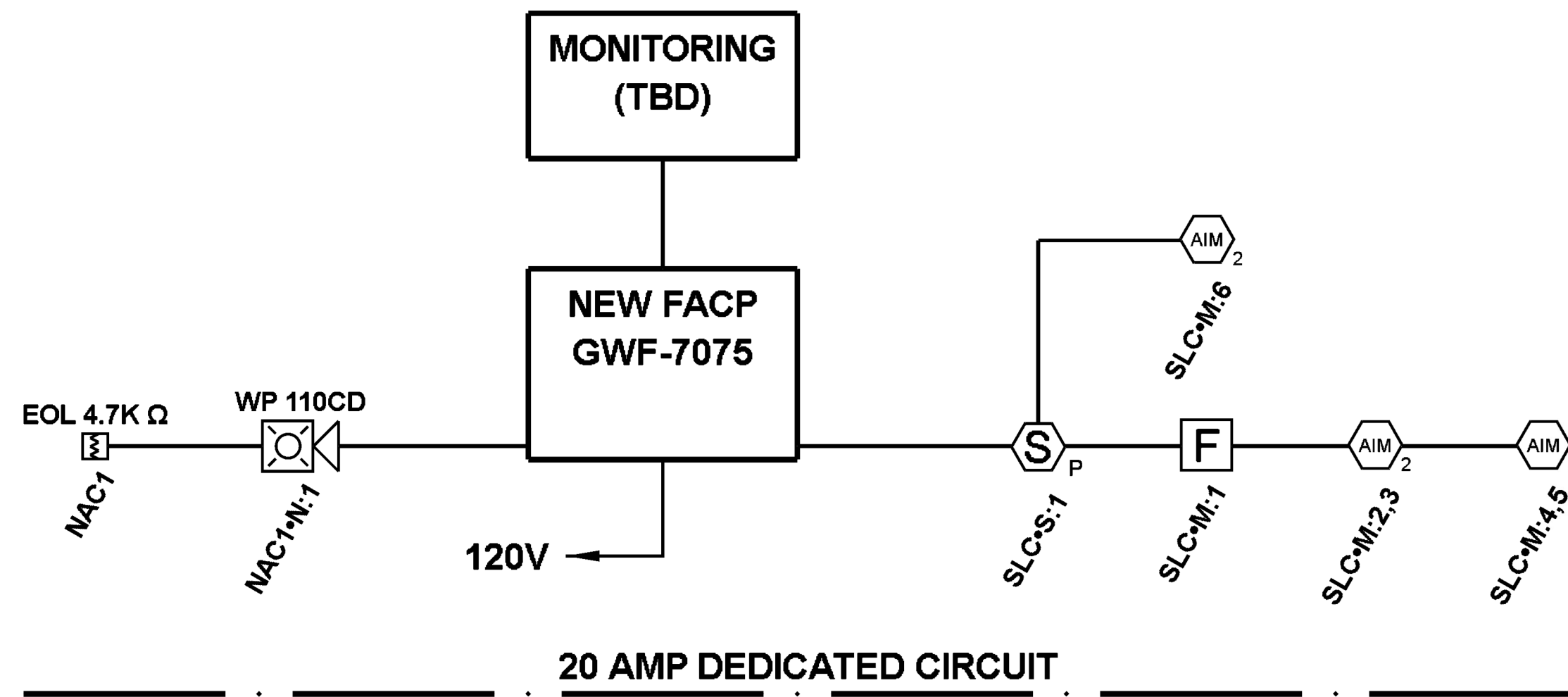
Building	Planning
Engineering	Public Works
Fire	Traffic



**SITE PLAN**  
 NOT TO SCALE



**VICINITY MAP**  
 NOT TO SCALE



**20 AMP DEDICATED CIRCUIT**

JOB #: 817-1481	<b>MCDONALD'S - FIRE ALARM PLAN</b>	
DATE: 09/06/24	CONTRACT NAME: McDonald's 304 2nd Street NE Puyallup, WA 98372	CONTRACT WITH: Ziva Enterprises, Inc. 1402 Lake Tapps Parkway NE Auburn, WA 98092
SCALE: 1/8"=1'-0"	ON-SITE CONTACT: Austin Taylor / 509-808-6061 / ziva.ataylor@gmail.com	
SHEET: FA01		

A	14/2 FPLP
B	16/2 FPLP
EX	EXISTING LOCATION
D	DEMO DEVICE
N	NEW DEVICE
R	RELOCATE

STROBE COVERAGE AREA SHALL BE DEFINED AS -  
 10 FT. CLG. HT. 20 FT. CLG. HT. 30 FT. CLG. HT.  
 15' cd = 20'x20' 30' cd = 20'x20' 75' cd = 20'x20'  
 30' cd = 30'x30' 75' cd = 30'x30' 95' cd = 30'x30'  
 75' cd = 40'x40' 95' cd = 40'x40' 110' cd = 40'x40'  
 95' cd = 50'x50' 110' cd = 50'x50' 115' cd = 50'x50'

CODE COMPLIANCE	
OCCUPANT TYPE:	A-2 PUYALLUP MUNICIPAL CODE
OCCUPANT LOAD:	X 2021 INTERNATIONAL BUILDING CODE
AREA:	X 2021 INTERNATIONAL FIRE CODE
CONSTRUCTION:	X 2023 NATIONAL ELECTRICAL CODE
SPRINKLERED:	YES 2022 NATIONAL FIRE ALARM & SIGNALING CODE

DESIGNER	
CAMRYN OLIVAREZ	NICET FAS-II, #153071
FIRE SYSTEMS WEST, INC	206 FRONTAGE ROAD NORTH #C PACIFIC, WASHINGTON 98047

REVISIONS				
NO.	DESCRIPTION	DATE	BY	CHK
1	ISSUED_FOR_REVIEW	09/06/2024	CO	MWC

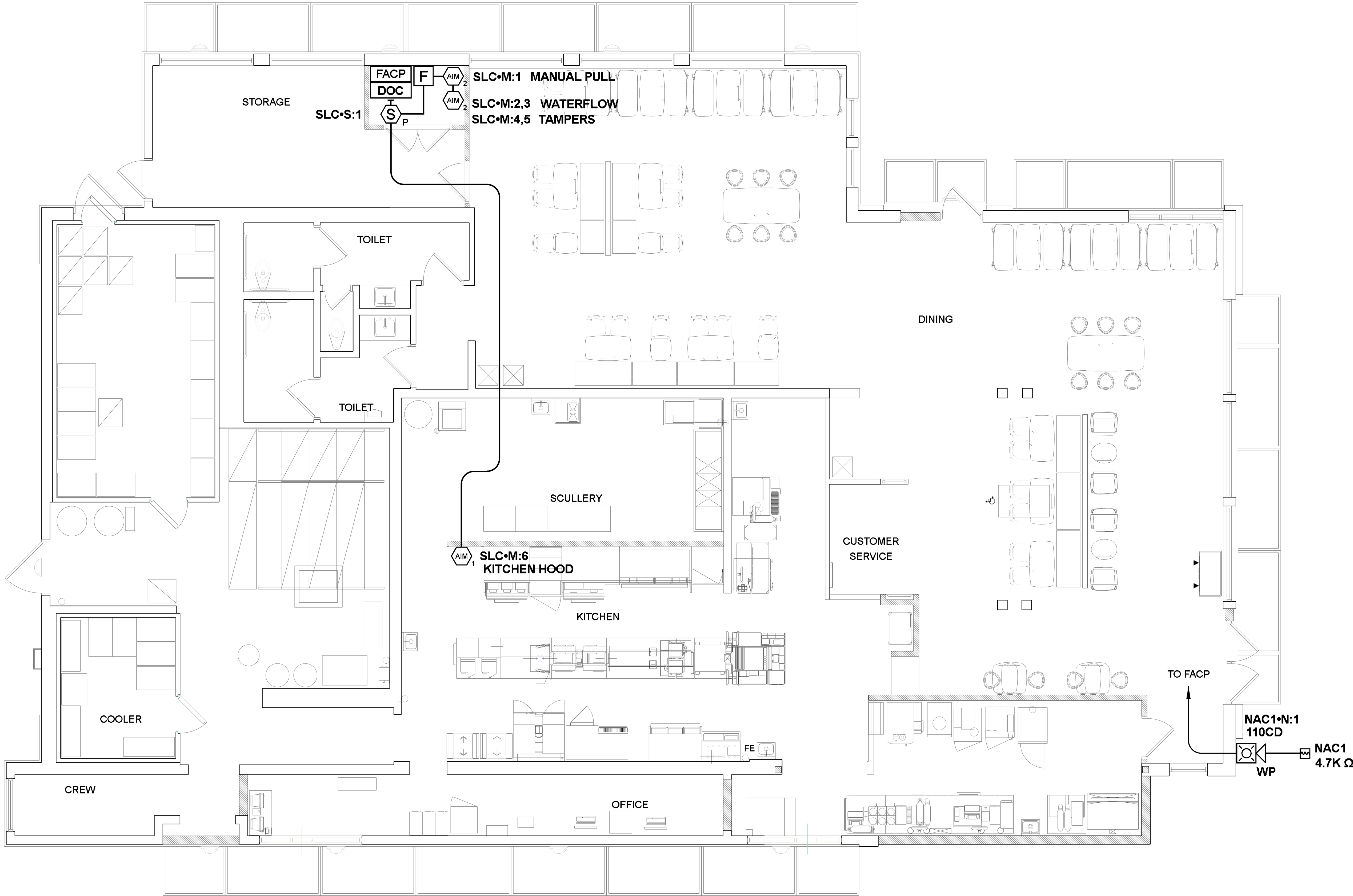
**Fire Systems West, Inc.**

206 Frontage Rd. North #C  
 Pacific, WA 98047  
 f:(253) 735-0113  
 t:(253) 833-1248  
 WA ECL# FIRESWI 055LW  
 WA CL# FIRESWI 140B1



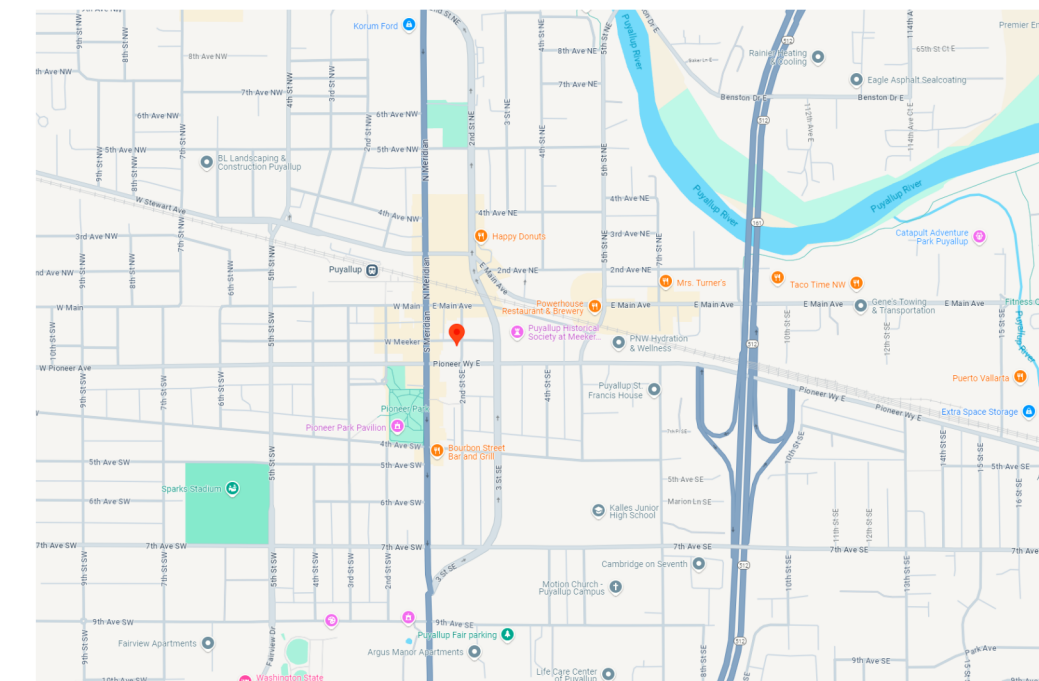
### GENERAL NOTES / SCOPE OF WORK

1. SYSTEM WIRING NOTED ON THE DRAWINGS IS PER MANUFACTURE AND CODE REQUIREMENTS. ANY ALTERATION TO SYSTEM WIRING, WITHOUT APPROVAL, IS AT ELECTRICAL CONTRACTOR'S OWN RISK!!
2. SYSTEM WIRING SHOWN ON DRAWINGS IS DIAGRAMMATIC AND ONLY USED FOR REFERENCE PURPOSES. ACTUAL WIRE AND DEVICE INSTALLATION MAY VARY DUE TO OBSTRUCTIONS.
3. WIRE SHOWN IN THIS DRAWING SET IS PERMITTED IN RACEWAYS LEADING TO FIRE PROTECTION EQUIPMENT. OTHER WIRE SHALL NOT BE PERMITTED IN THE SAME RACEWAY.
4. FIRE ALARM SYSTEM INSTALLATION SHALL CONFORM WITH THE LATEST U.L., N.E.C., N.F.P.A., W.A.C., AND OTHER STANDARDS AS APPLICABLE TO THE CITY STANDARDS.
5. WHEN NECESSARY, DUE TO CHANGING DESIGN REQUIREMENTS, FACTORY AVAILABILITY, ETC. FIRE SYSTEMS WEST RESERVES THE RIGHT TO SUBSTITUTE EQUIPMENT HEREIN MENTIONED OR SPECIFIED, WITH EQUIPMENT OF EQUAL OR BETTER QUALITY, FUNCTION AND DESIGN.
6. PARALLEL BRANCHING (T-TAPPING) OF WIRE TO ALL NOTIFICATION APPLIANCE CIRCUITS SHALL NOT BE PERMITTED.
7. FIRE SYSTEMS WEST WILL INSTALL A NEW FIRE ALARM CONTROL PANEL.
8. FIRE SYSTEMS WEST WILL INSTALL A NEW SMOKE DETECTOR AND MANUAL PULL STATION AT THE FIRE ALARM CONTROL PANEL.
9. FIRE SYSTEMS WEST WILL INSTALL NEW DUAL INPUT MODULES TO MONITOR THE SPRINKLER RISER SYSTEM.
10. FIRE SYSTEMS WEST WILL INSTALL A NEW DUAL INPUT MODULE TO MONITOR THE KITCHEN HOOD SUPPRESSION SYSTEM.
11. FIRE SYSTEMS WEST WILL INSTALL A NEW EXTERIOR NOTIFICATION DEVICE.



City of Puyallup  
Development & Permitting Services  
ISSUED PERMIT

Building	Planning
Engineering	Public Works
Fire	Traffic



### FIRE ALARM PLAN

SCALE: 1/4"=1'-0"

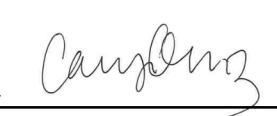
### VICINITY MAP

NOT TO SCALE

JOB #: 817-1481	<b>MCDONALD'S - FIRE ALARM PLAN</b>	
DATE: 09/06/24	CONTRACT NAME: McDonald's 304 2nd Street NE Puyallup, WA 98372	CONTRACT WITH: Ziva Enterprises, Inc. 1402 Lake Tapps Parkway NE Auburn, WA 98092
SCALE: 1/4"=1'-0"	ON-SITE CONTACT: Austin Taylor / 509-808-6061 / ziva.ataylor@gmail.com	
SHEET: FA02		

A	14/2 FPLP	
B	16/2 FPLP	
EX	EXISTING LOCATION	
D	DEMO DEVICE	
N	NEW DEVICE	
R	RELOCATE	
* STROBE COVERAGE AREA SHALL BE DEFINED AS -		
10 FT. CLG. HT.	20 FT. CLG. HT.	30 FT. CLG. HT.
15 cd = 20x20'	30 cd = 20x20'	75 cd = 20x20'
30 cd = 30x30'	75 cd = 30x30'	95 cd = 30x30'
75 cd = 40x40'	95 cd = 40x40'	110 cd = 40x40'
95 cd = 50x50'	110 cd = 50x50'	115 cd = 50x50'

CODE COMPLIANCE		
OCCUPANT TYPE:	A-2	PUYALLUP MUNICIPAL CODE
OCCUPANT LOAD:	X	2021 INTERNATIONAL BUILDING CODE
AREA:	X	2021 INTERNATIONAL FIRE CODE
CONSTRUCTION:	X	2023 NATIONAL ELECTRICAL CODE
SPRINKLERED:	YES	2022 NATIONAL FIRE ALARM & SIGNALING CODE

DESIGNER		REVISIONS				
CAMRYN OLIVAREZ NICET FAS-II, #153071		NO.	DESCRIPTION	DATE	BY	CHK
FIRE SYSTEMS WEST, INC. 206 FRONTAGE ROAD NORTH #C PACIFIC, WASHINGTON 98047		1	ISSUED_FOR_REVIEW	09/06/2024	CO	MWC
						

**Fire Systems West, Inc.**

206 Frontage Rd. North #C  
Pacific, WA 98047

f:(253) 735-0113  
t:(253) 833-1248

WA ECL# FIRESWI 055LW  
WA CL# FIRESWI 140B1

