

PROJECT SCOPE

RETROFIT EXISTING MCDONALD'S WITH NEW WET FIRE SPRINKLER SYSTEM. RELIANCE SCOPE OF WORK STARTS AT SUPPLY ABOVE GRADE PROVIDED IN FIRE RISER RM 106. ALL UNDERGROUND WORK IS A PART OF THE SEPARATE PERMIT AND TO BE PROVIDED BY OTHERS.

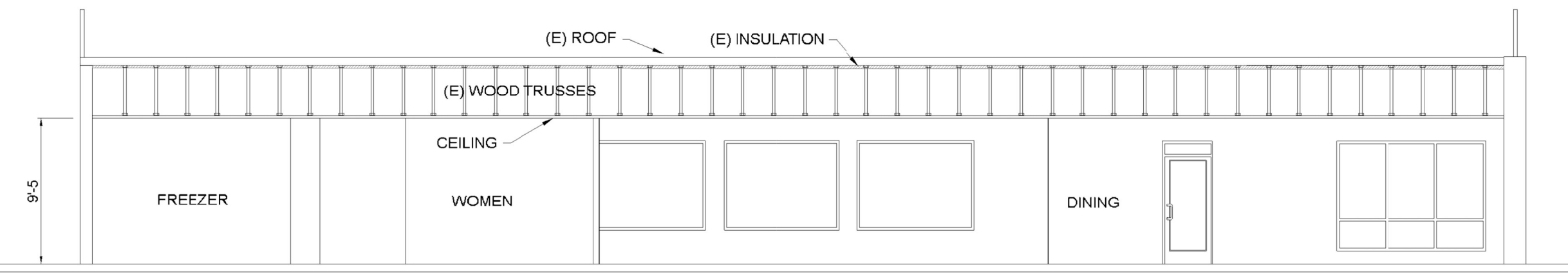
GENERAL NOTES

1. ALL DESIGN, INSTALLATION & MATERIALS TO CONFORM TO NFPA 13 & THE CITY OF PUYALLUP REQUIREMENTS.
2. SYSTEM TO BE HYDROSTATICALLY TESTED @ 200 PSI FOR 2 HOURS.
3. 24-HOUR SUPERVISION TO BE PROVIDED BY OTHERS.
4. ALL ELECTRICAL WORK TO BE PROVIDED BY OTHERS.
5. PIPE SIZING PER: HYDRAULIC CALCULATIONS.
6. ALL COMPONENTS OF THIS SYSTEM TO BE U.L. LISTED AND F.M. APPROVED.

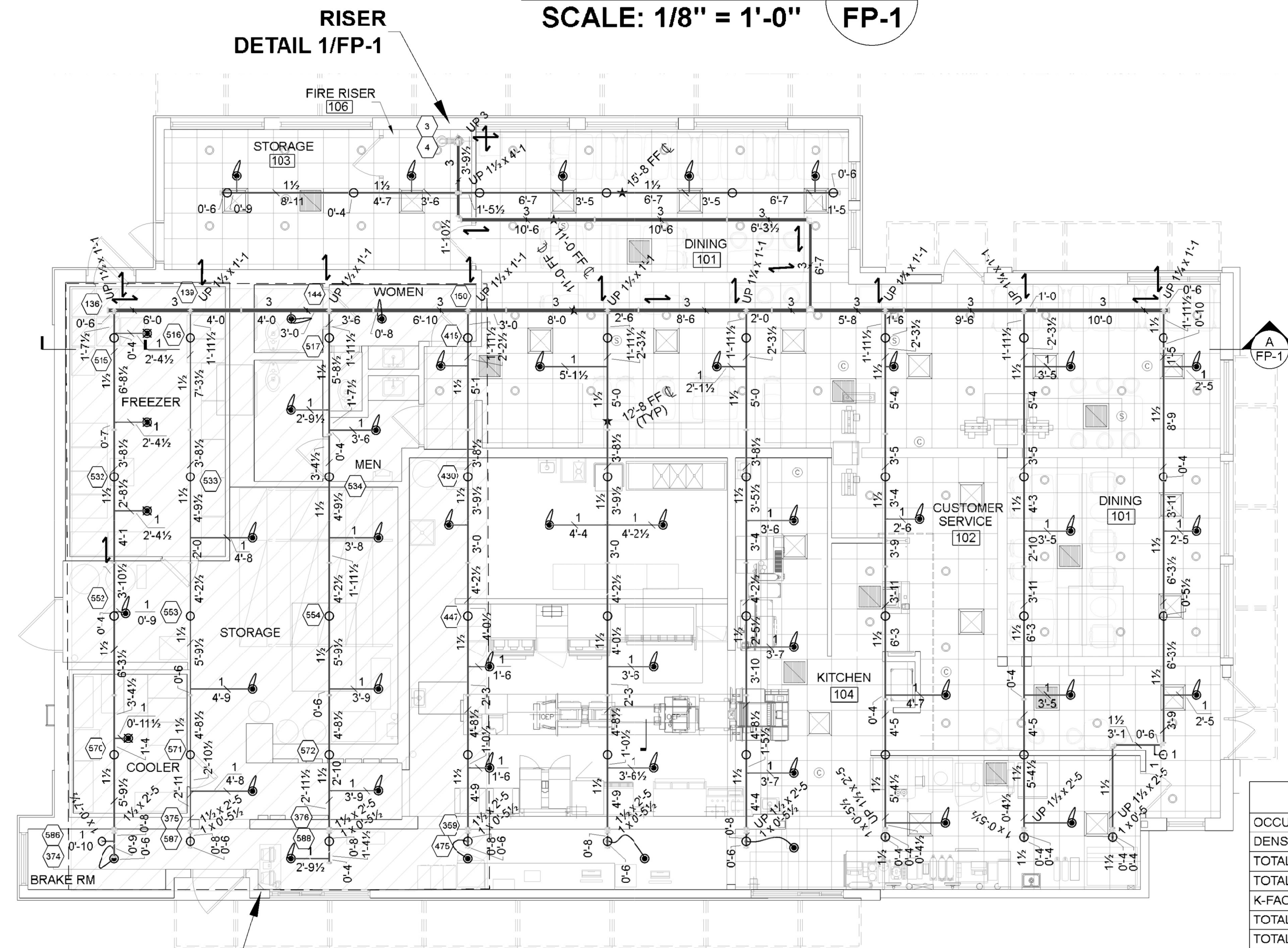
PIPING NOTES

SPRINKLER MAIN TO BE SCHED 10 BLACK STEEL PIPING WITH ORANGE GROOVED FITTINGS, MECHANICAL TEES AND COUPLINGS.

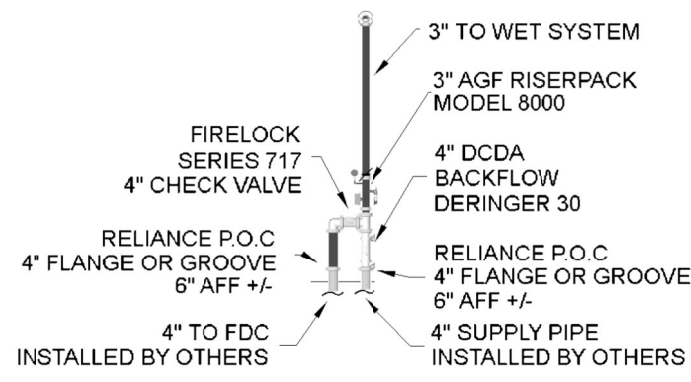
SPRINKLER BRANCH LINES TO BE SCHED 10 BLACK STEEL PIPING WITH ORANGE GROOVED FITTINGS AND SCHED 40 BLACK STEEL PIPING WITH BLACK THREADED FITTINGS.



SECTION A
SCALE: 1/8" = 1'-0"
FP-1



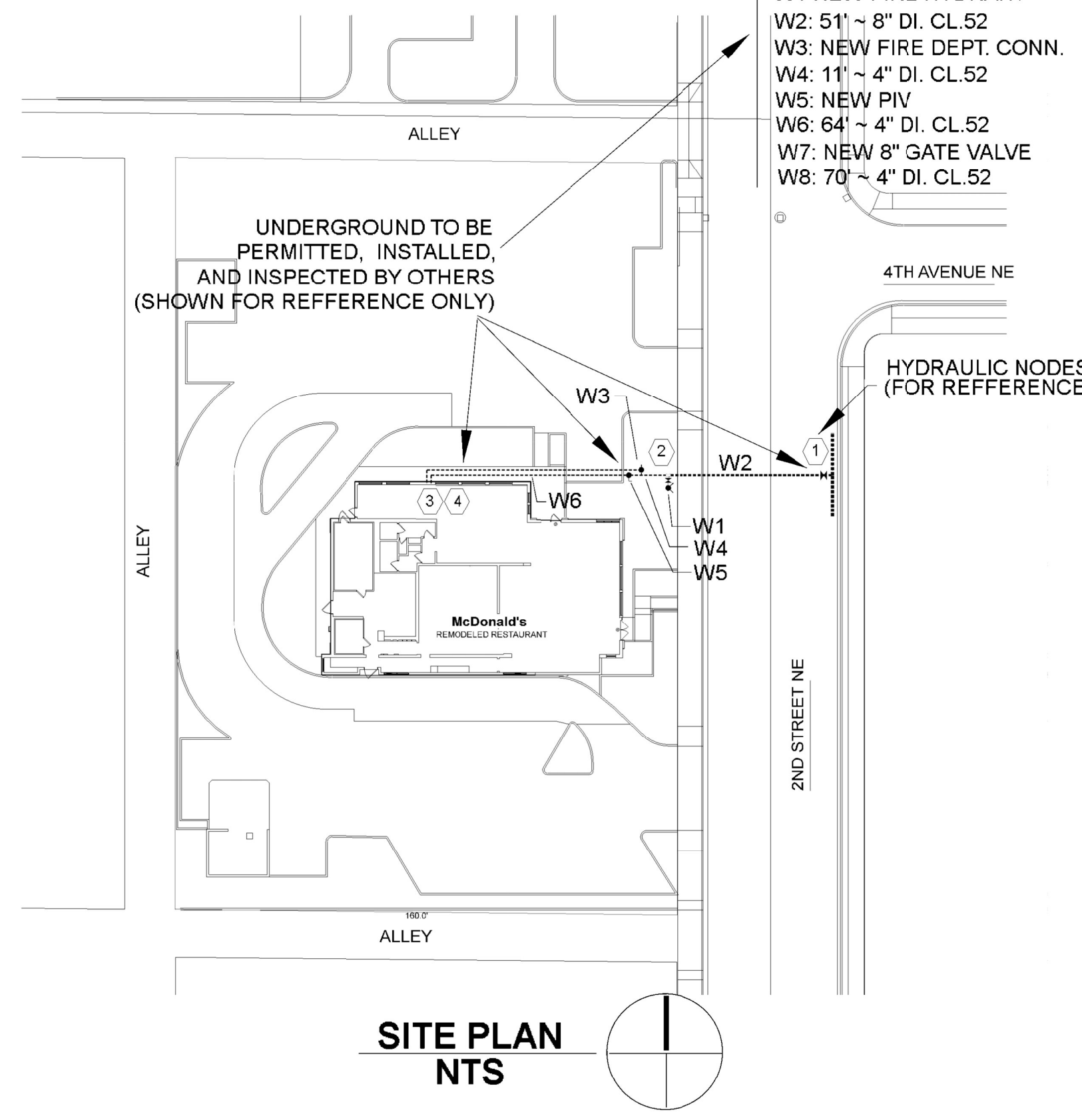
FIRE SPRINKLER PLAN
SCALE: 1/8" = 1'-0"



RISER DETAIL 1
SCALE: 1/8" = 1'-0"
FP-1

WATER FLOW INFORMATION	
STATIC PRESSURE:	51 (PSI)
RESIDUAL PRESSURE:	39 (PSI)
AVAILABLE FLOW @ HYDRANT:	1,560 (GPM)
FLOW TEST DATA: APPROVED FIRE FLOW MODEL BY GRAY & OSBORNE, INC	

- WATER NOTES**
- W1 NEW FIRE HYDRANT
 - W2: 51" ~ 8" DI. CL.52
 - W3: NEW FIRE DEPT. CONN.
 - W4: 11" ~ 4" DI. CL.52
 - W5: NEW PIV
 - W6: 64" ~ 4" DI. CL.52
 - W7: NEW 8" GATE VALVE
 - W8: 70" ~ 4" DI. CL.52



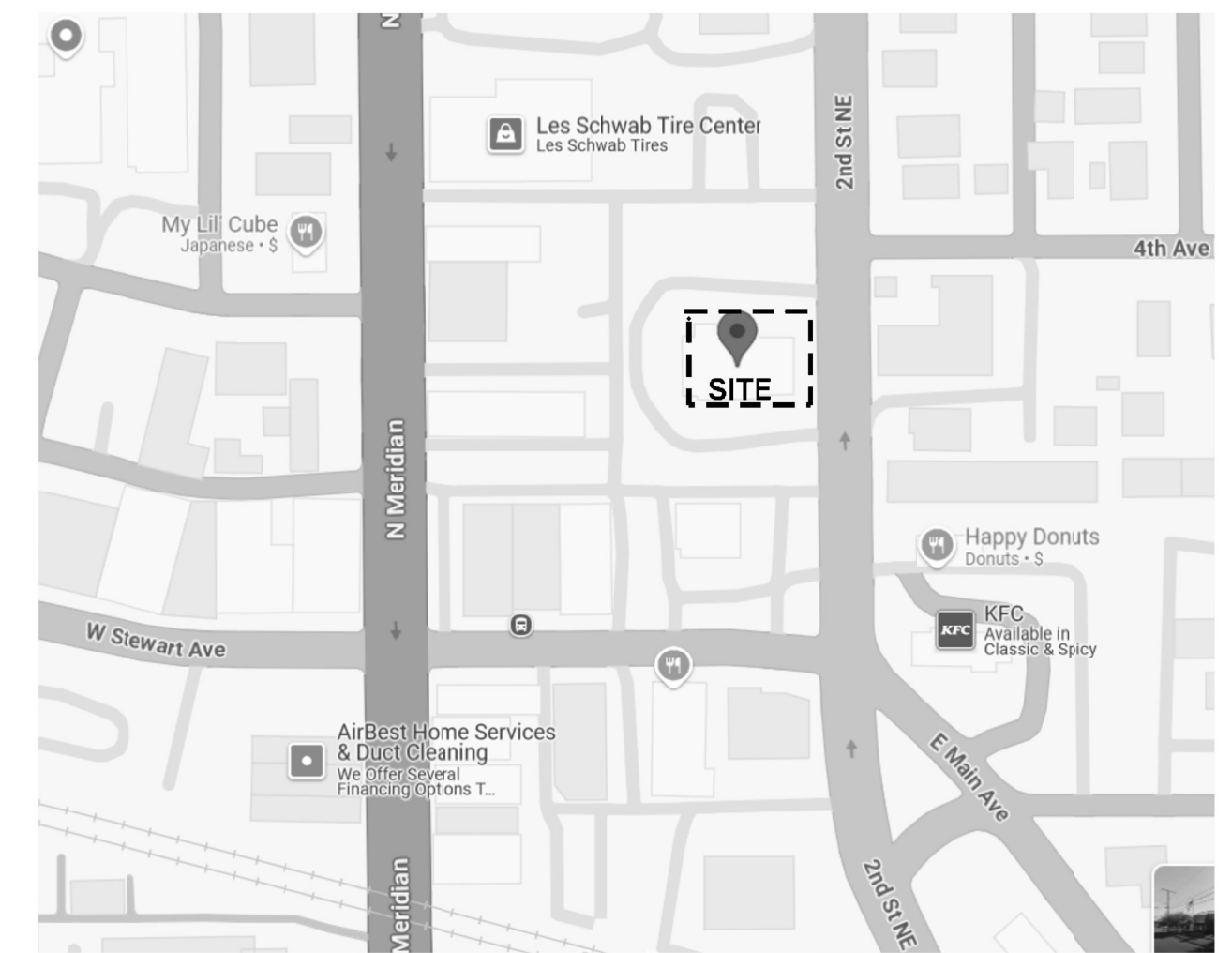
City of Puyallup
Development & Permitting Services
ISSUED PERMIT

Building	Planning
Engineering	Public Works
Fire	Traffic

City of Puyallup
Fire REVIEWED FOR COMPLIANCE
DDrake
10/03/2024
9:24:38 AM

THE APPROVED CONSTRUCTION PLANS AND ALL ENGINEERING MUST BE POSTED ON THE JOB AT ALL INSPECTIONS IN A VISIBLE AND READILY ACCESSIBLE LOCATION.

Approval of submitted plans is not an approval of omissions or oversight by this office or noncompliance with any applicable regulations of local government. The contractor is responsible for making sure that the building complies with all applicable building codes and regulations of the local government.



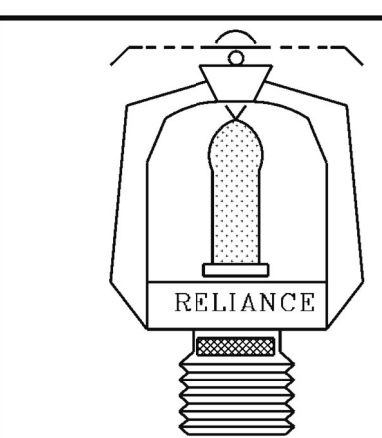
VICINITY MAP
SCALE: NTS

Hydraulic Information	
OCCUPANCY CLASSIFICATION	Light Hazard
DENSITY	0.100gpm/ft ² for 1500.00ft ² (Actual 1568.10ft ²)
TOTAL HOSE STREAMS	250.00
TOTAL HEADS FLOWING	19
K-FACTOR	5.6
TOTAL WATER REQUIRED	587.38
TOTAL PRESSURE REQUIRED	42.480
BASE OF RISER (gpm)	587.38
BASE OF RISER (psi)	42.480
SAFETY MARGN (psi)	+6.551 (13.4%)

Legend		Revisions	
Symbol	Description	No.	Date By Description
—	NEW SPRINKLER PIPING		
—	HANGER LOCATION		
—	2 WAY EQ. BRACE		
—	4 WAY EQ. BRACE		

Sprinkler Legend	
Symbol	Manufacturer Model / Style
○	VICTAULIC V2704 QR UPRIGHT
●	VICTAULIC V2708 QR RESESSED PENDENT
■	VICTAULIC V3606 QR DRY PENDENT

FINISH	K Factor	NPT	Degree	Qty
BRASS	5.6	1/2	155	51
CHR	5.6	1/2	155	47
CHR	5.6	1	155	4
PROJECT TOTAL 102				



CONTRACTOR'S LICENSE:	
Lic. #	RELIAFP 102L1
Job No.:	B080124
Date:	8-28-24
Drawn by:	Oleg Sergeev
Approval:	CITY OF PUYALLUP
Scale:	1/8"=1'-0"

Reliance Fire Protection, Inc.
8168 304th Ave. SE P.O. Box 428
Preston, Wa. 98050-0428

Tel: (206) 682-6636 Fax: (206) 682-6744 Email: Oleg@reliancefire.com

MCDONALDS PUYALLUP REMODEL
304 2nd STREET NE
PUYALLUP, WA 98372

FIRE PROTECTION PLAN

FP-1 of 1