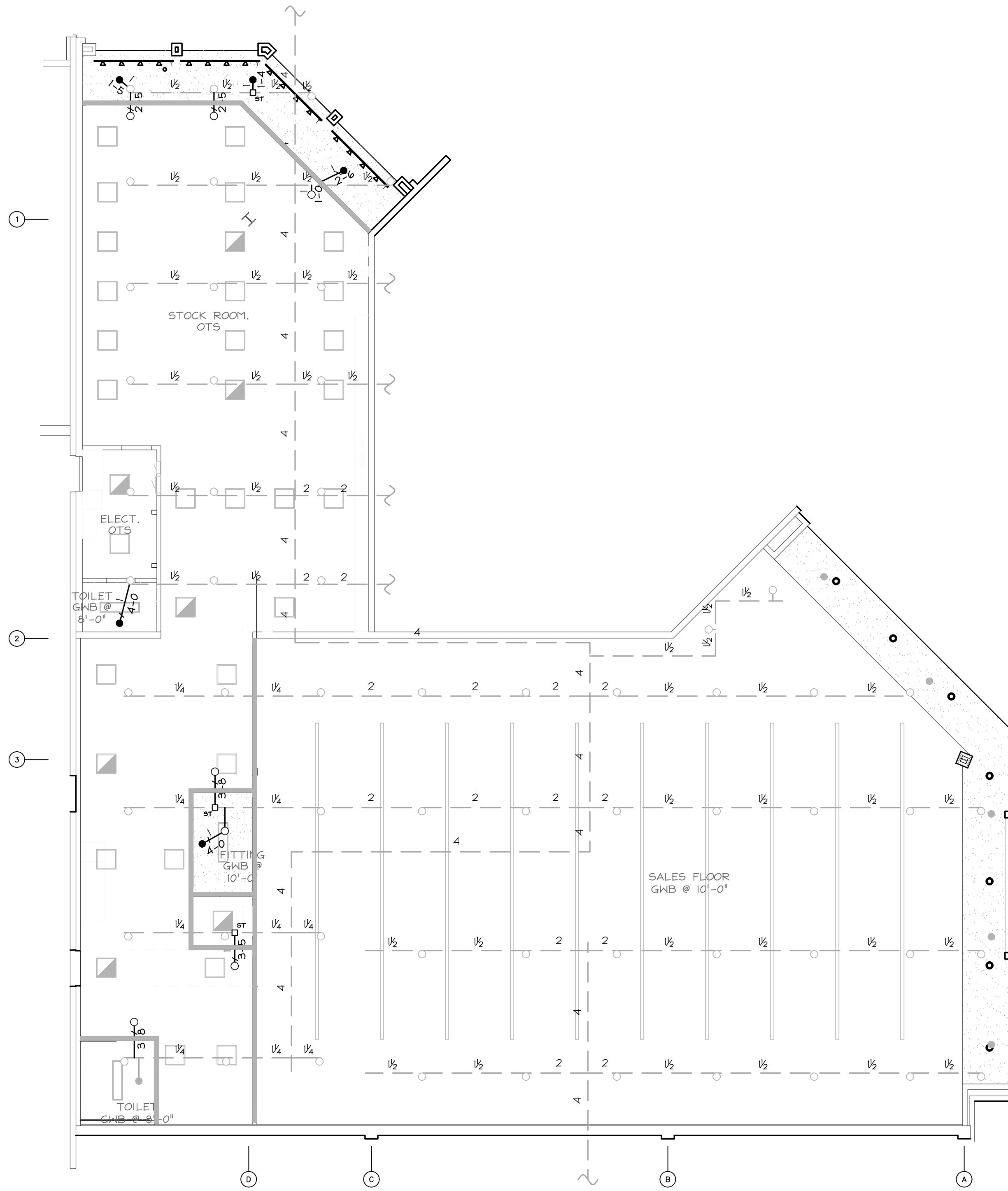


City of Puyallup Fire REVIEWED FOR COMPLIANCE
 DDrake
 10/09/2024
 1:29:03 PM

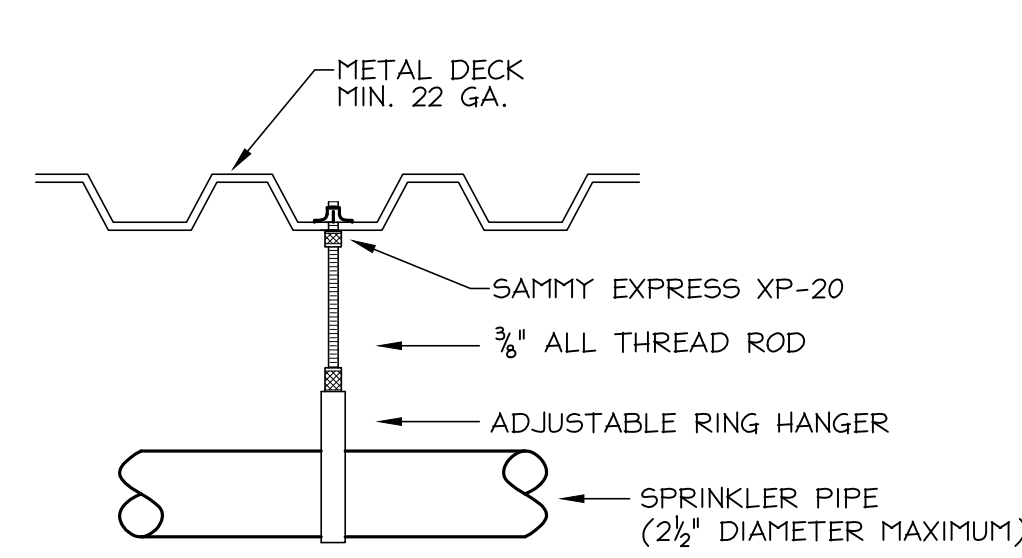
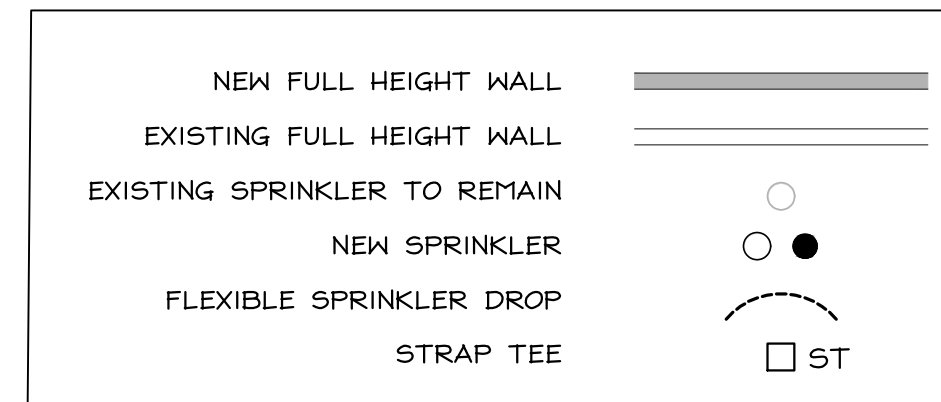
THE APPROVED CONSTRUCTION PLANS AND ALL ENGINEERING MUST BE POSTED ON THE JOB AT ALL INSPECTIONS IN A VISIBLE AND READILY ACCESSIBLE LOCATION.

Approval of submitted plans is not an approval of omissions or oversight by this office or noncompliance with any applicable regulations of local government. The contractor is responsible for making sure that the building complies with all applicable building codes and regulations of the local government.

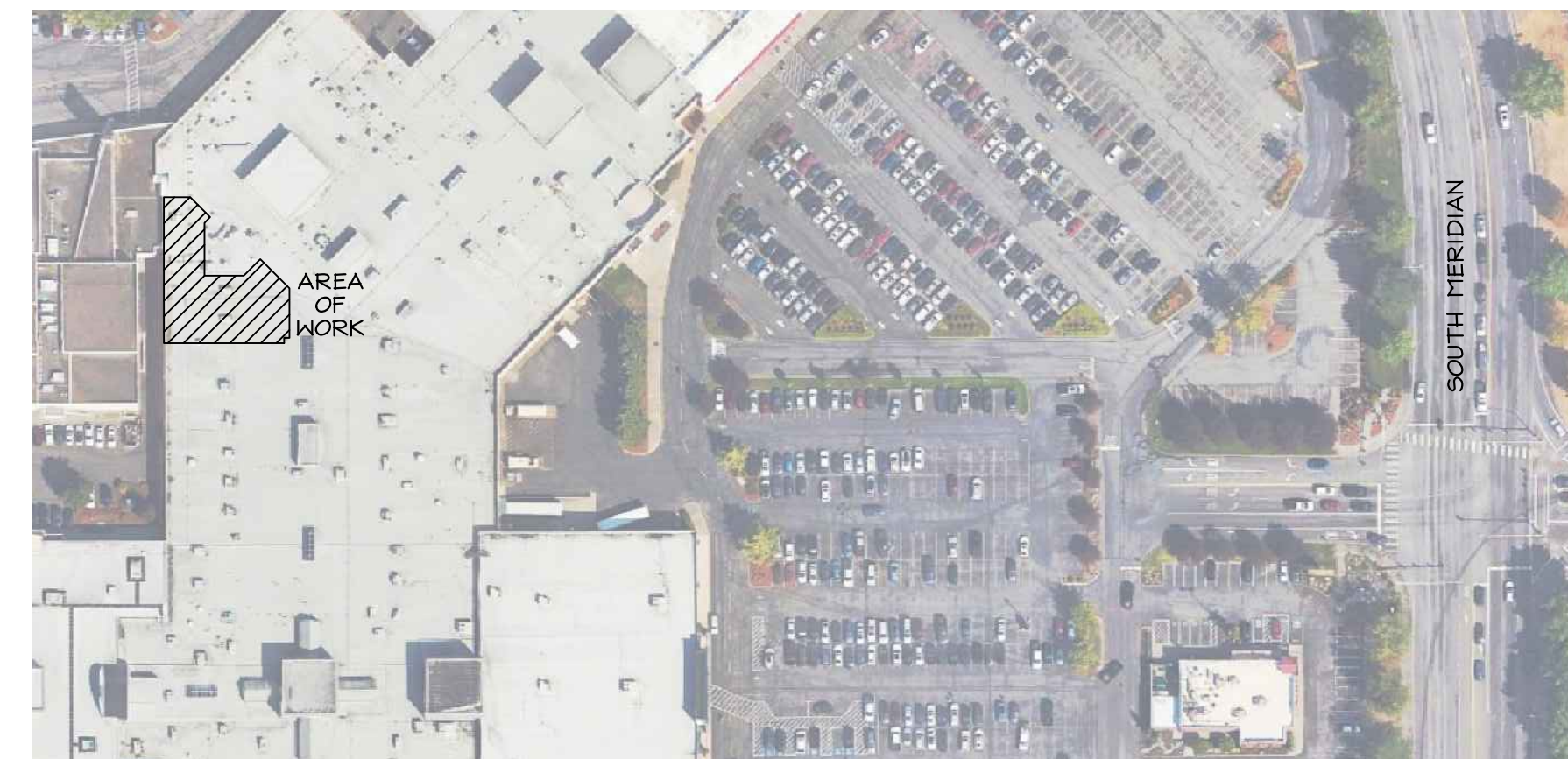
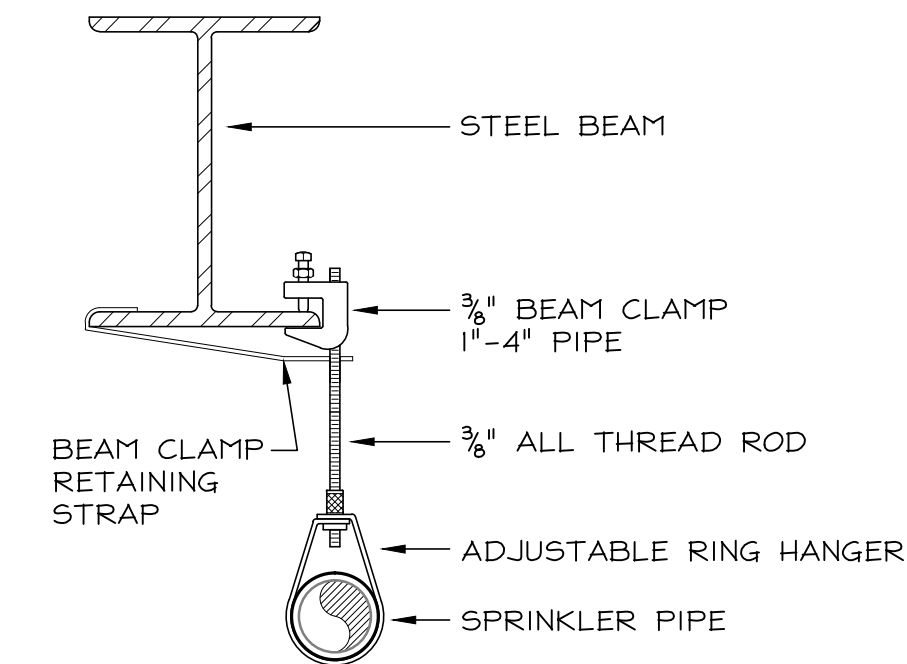
City of Puyallup Development & Permitting Services ISSUED PERMIT	
Building	Planning
Engineering	Public Works
Fire	Traffic



FIRE SPRINKLER PLAN
 SCALE: 1/8"=1'-0"



HANGER DETAILS
 SCALE: N.T.S.



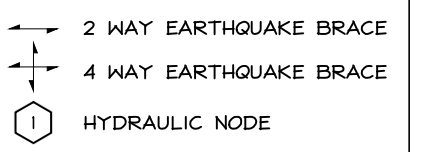
VICINITY MAP
 N.T.S.

SCOPE OF WORK:

KNIGHT FIRE PROTECTION, INC. TO MODIFY THE EXISTING FIRE SPRINKLER SYSTEM TO ACCOMMODATE NEW WALLS AND CEILINGS IN THE TENANT IMPROVEMENT AREA NFA 13.

HANGER LEGEND	
A	ALL THREAD ROD
B	TOP-BEAM CLAMP
C	SHIVEL CLAMP
D	FLUSH SHELL
E	CEILING FLANGE
F	SIDE BEAM BRACKET
J	WEDGE ANCHOR
K	TRAPEZE
Y	SAMMY SCREW

FITTING LEGEND	
ST	STRAP TEE
S	SOCK-IT
MT	MECHANICAL TEE
P	PIPE-O-LET
SN	SHAPED NIPPLE
W	WELD FITTING



GENERAL NOTES
 REFER TO THE NFPA 13, 2016 EDITION

- MATERIAL TO BE NEW AND UL LISTED.
- PIPING SHALL BE PER NFPA 13.
- EARTHQUAKE BRACING SHALL BE PER NFPA 13.
- JOINING OF PIPE AND FITTINGS, THREADED, GROOVED, PLAIN END, AND WELDED SHALL BE PER NFPA 13.
- PIPE HANGERS AND METHOD OF HANGING TO BE PER NFPA 13.
- PIPING DIMENSIONS ARE CENTER TO CENTER.
- OWNER TO PROVIDE ADEQUATE HEAT TO PREVENT WATER IN PIPES FROM FREEZING IN AREAS PROTECTED BY A WET PIPE SPRINKLER SYSTEM, (MINIMUM 40°F REQUIRED).
- ALL WIRING OF ELECTRICAL DEVICES TO BE BY OTHERS.
- PAINTING OF PIPE AND EQUIPMENT (IF REQUIRED) BY OTHERS.
- FURRING OF PIPE AND EQUIPMENT (IF REQUIRED) BY OTHERS.

APPROVALS		QTY
CITY OF PUYALLUP		2
OWNER/ARCHITECT		2
KNIGHT FIRE		1
TOTAL		5

SPRINKLERS USED									
SYMBOL	SPRINKLER MAKE & MODEL	S.U.L.	THREAD SIZE	ORIFICE	FINISH	SPRINKLER TYPE	ESQ/OTDR	TEMP	QTY
○	RELIABLE GR SSP RECESSED	RAM425	1/2"	5.6	BRASS	N/A	200"	7	
●	RELIABLE GR SSP RECESSED	RAM44	1/2"	5.6	WHITE	WHITE	200"	5	
									TOTAL
									12

SYSTEM DEMAND		WATER FLOW INFO.	
REQUIRED PRESSURE	p.s.i.	STATIC PRESSURE	p.s.i.
AVAILABLE PRESSURE	p.s.i.	RESIDUAL PRESSURE	p.s.i.
TOTAL DEMAND	g.p.m.	FLOW	g.p.m.
HOSE	g.p.m.	DATE TESTED	

DESIGN CRITERIA			
STANDARD	NFPA 13 (2018)		
HAZARD CLASSIFICATION:	ORDINARY HAZARD GROUP 2		
MAX SD. FT. / HEAD	130 DENSITY 20 GPM / N/A SD. FT.		
TYPE OF SYSTEM:	WET		
QUALITY CONTROL BY:	DATE:		
MK	DATE	BY	REVISIONS

CONTRACT WITH:
Mavacon
 10290 Atlantic Ave. PO Box 481509
 Delray Beach, FL 33448
 Jobsite Supt: _____ Phone: _____

CONTRACT NAME:
Shoe Palace
 3500 S. Meridian, Space 410 & 420
 Puyallup, WA 98373



KNIGHT FIRE PROTECTION, INC.
 9702 LATHROP INDUSTRIAL DR. SW
 OLYMPIA, WA 98512-9188
 (360) 786-8606
 LICENSE NO. KNIGHTFP044LK

DESIGNER: Job Pannell DATE: 9-10-24 JOB NUMBER: 24-068
 FILE NAME: 24-068 Shoe Palace

1 OF 1