

**Gary K. Munkelt and Associates, LLC**

*Consulting Structural Engineers*

Project: Racking - Costco Store #660 – 1201 39<sup>th</sup> Street Puyallup, WA 98573  
GKM Job No. 2404131

Date: 09/25/2024  
Sheet RC1 of RC1

<b>Response to Plan Review Comments – 1<sup>st</sup> Submission</b> <i>Structural Items Only</i>	
City of Puyallup, WA Plan Examiner: Brian Snowden	
Reviewed Date: 09/17/2024	
Item	Response
	The following is the plan check review comment responses for the Structural Comments for the storage racking shown on Floor Plan (Rack Layout) drawing RP-1, CW-10 & RU-9 drawings.
S1	The Aisle Widths between the new and existing rack are now shown on Rack Plan drawing RP-1.
S2	The lighting details for the store can be find on Existing Drawings E-1 and E-3. See attached.
S3	A note has been added to the drawings to identify all new racks as the “3-Level” Type. Reference rack component drawings RU-9 and CW-10 for additional information.

**LEGEND**

- FIXTURE TYPE
- INCANDESCENT OR H.I.D. LIGHT FIXTURE
- WALL MOUNTED FIXTURE
- COMBINATION EXIT/EGRESS FIXTURE WITH BATTERY PACK
- EGRESS/EMERGENCY FIXTURE W/ BATTERY PACK
- H.I.D. LIGHT FIXTURE W/QUARTZ STRIKE LAMP
- FIXTURE ON EMERGENCY LIGHT CIRCUIT W/BATTERY BACK PACK
- FLUORESCENT LIGHT FIXTURE
- SUB-LETTER INDICATES CONTROLLING SWITCH
- SUB-LETTER INDICATES CONTROLLING SWITCH, a CONTROLS OUTER LAMP(S) AND b CONTROLS INNER LAMP(S)
- POLE MOUNTED PARKING LOT LIGHT FIXTURE
- SINGLE POLE SWITCH, +42"
- SUB-LETTER INDICATES FIXTURE CONTROLLED, +42"
- SINGLE POLE SWITCH WITH PILOT LIGHT, +42"
- SINGLE POLE SWITCH WITH KEY-LOCK, +42"
- THREE POLE SWITCH, +42"
- SWITCH PROVIDED BY M.C., INSTALLED BY E.C., +42"
- PUSH BUTTON, +42"
- PUSH BUTTON FOR SHUNT TRIP, +42"
- DIMMER SWITCH, LUTRON SLIDE TYPE, +42"
- BUZZER WITH TRANSFORMER, +84"
- SINGLE PLUG-IN RECEPTACLE, +18" OR AS NOTED
- DUPLEX RECEPTACLE, +18" OR AS NOTED
- ISOLATED GROUND DUPLEX RECEPTACLE, +18" OR AS NOTED
- ISOLATED GROUND FOUR-FLEX RECEPTACLE, +18" OR AS NOTED
- FOUR-FLEX RECEPTACLE, +18" OR AS NOTED
- 208 VOLT RECEPTACLE, +18" OR AS NOTED
- SPECIAL PURPOSE OUTLET, +18" OR AS NOTED
- FLOOR MOUNTED DUPLEX RECEPTACLE
- PLUGMOLD WITH RECEPTACLES, SEE SPECS
- JUNCTION BOX, SIZE AND TYPE PER CODE
- FUSED DISCONNECT, COORDINATE W/EQUIPMENT SUPPLIER
- COMBINATION STARTER/DISCONNECT SWITCH
- NON-FUSED DISCONNECT, COORDINATE W/EQUIPMENT SUPPLIER

- MOTOR CONNECTION AS REQUIRED
- TELEPHONE OUTLET WITH 3/4" CONDUIT TO CEILING SPACE OR AS SHOWN
- PAY TELEPHONE OUTLET WITH 1-1/2" CONDUIT TO MAIN TELEPHONE BOARD
- TELEVISION JACKS, QUANTITY AS INDICATED
- CONDUIT IN CEILING OR WALL, 1/2" MIN.
- CONDUIT UNDERGROUND OR FLOOR, 3/4" MIN.
- HOME RUN TO PANEL WITH CIRCUIT NUMBER, SLASHES INDICATE NUMBER OF CONDUCTORS
- INDICATES WIRES AND CONDUIT OTHER THAN #12, 1/2" C - METALLIC CONDUIT, PVC - PLASTIC CONDUIT
- ISOLATED GROUND OR GROUND CONDUCTOR
- EDP CABLE. SEE SPECIFICATIONS.
- FLEXIBLE CONDUIT CONNECTION AS REQUIRED
- TRANSFORMER
- 277-120V SQ-D 9070 K50 D4 CONTROL TRANSFORMER W/UE7 ENCLOSURE
- 3/4"x4"x8" PAINTED TELEPHONE BOARD
- BRANCH PANEL
- GROUNDING PER CODE OR 3/4" DIAMETER 10' LONG STAINLESS STEEL GROUND ROD
- MECHANICAL UNIT
- EQUIPMENT TYPE
- WP WEATHER PROOF
- C.O. CONDUIT ONLY WITH PULL WIRES
- LCC LIGHTING CONTROL CENTER
- +48" INDICATES MOUNTING HEIGHT OF EQUIPMENT/OUTLET CENTER LINE ABOVE FINISH FLOOR
- M.S.B. MAIN SWITCHBOARD
- M.D.P. MAIN DISTRIBUTION PANEL
- M.L.O. MAIN LUGS ONLY
- DC DROP CORD
- CU COPPER
- A.F.F. ABOVE FINISH FLOOR
- GFI GROUND FAULT CIRCUIT INTERRUPTER

**ONE LINE DIAGRAM NOTES:**

E.C. IS TO VERIFY WITH THE UTILITY COMPANY THE SHORT CIRCUIT FAULT CURRENT PROTECTION SO THAT ALL ELECTRICAL EQUIPMENT DOWN STREAM WILL NOT EXCEED ITS FAULT CURRENT RATING. PANELBOARDS TO BE UL TESTED, LISTED AND LABEL WITH SERIES CONNECTED RATINGS TO MEET OR EXCEED AVAILABLE FAULT CURRENT AS REQUIRED BY STATE, LOCAL, AND THE NATIONAL ELECTRICAL CODES. PROVIDE BONDING BETWEEN SECTIONS FOR MULTISECTION SWITCHBOARDS AND PANEL BOARDS.

ELECTRICAL EQUIPMENT INCLUDING SWITCHBOARD, DISTRIBUTION BOARD AND TRANSFORMERS SHALL BE EQUIPPED WITH NON COMBUSTIBLE SPRINKLER HOOD OR SHIELD.

PROVIDE METAL SHEET PAN UNDER ALL FREE STANDING ELECTRICAL PANEL BOARDS ON COMBUSTIBLE FLOOR.

DRY TYPE TRANSFORMERS OVER 112.5KVA SHALL BE COMPLETELY ENCLOSED EXCEPT FOR VENTILATION OPENINGS PER NEC 450-21 (b).

1 OVERHEAD FEEDER

2 E.C. TO MEASURE THE VOLTAGE AT PANELS P8 & P9, IF THE VOLTAGE LESS THAN 208V, E.C. SHALL ADJUST THE TAPS AT TRANSFORMER T2.

**GENERAL NOTES:**

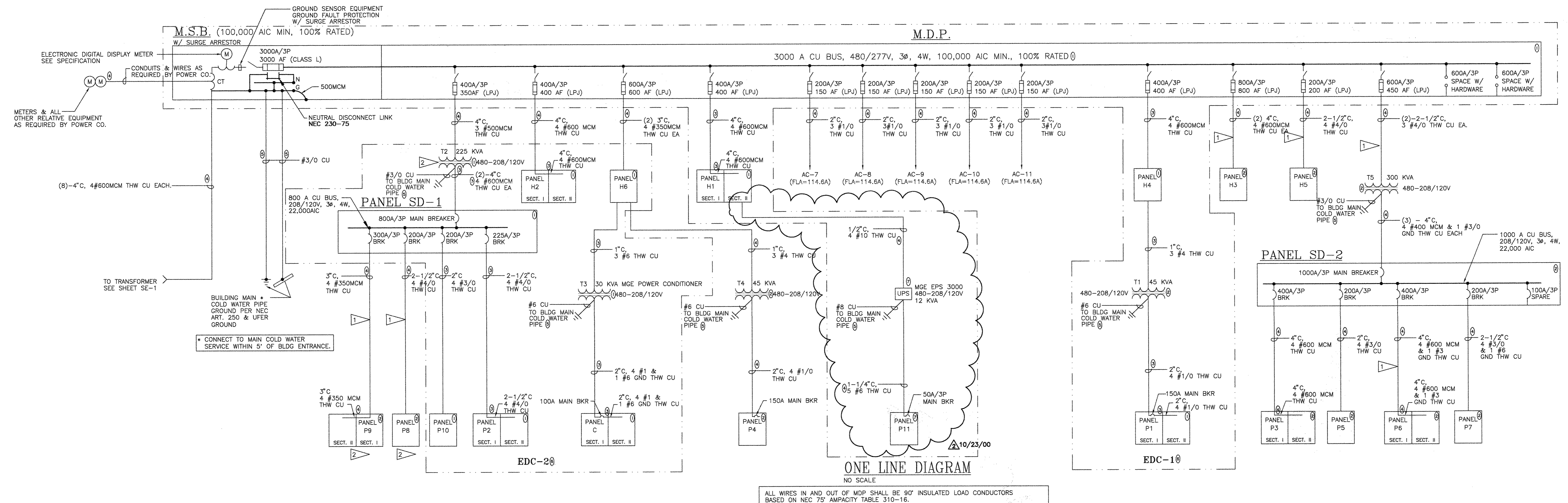
1. DO NOT RUN UNDERGROUND CONDUITS UNDER FREEZERS IN SLAB. UNDERGROUND CONDUITS SHALL BE 24" BELOW SLAB.
2. MOUNT ALL OVERHEAD CONDUITS AT 25" MINIMUM IN MAIN BUILDING.
3. MINIMUM WIRE & CONDUIT SIZE ARE #12 CU 1/2" C.T.P.

**PLAN NOTES:**

1. PANELS/SWITCHBOARD/TRANSFORMERS PROVIDED AND INSTALLED BY HUSSMANN.
2. PANELS/SWITCHBOARD/TRANSFORMERS PROVIDED BY HUSSMANN AND INSTALLED BY ELECTRICAL CONTRACTOR.
3. FEEDER PROVIDED AND INSTALLED BY HUSSMANN.
4. FEEDER PROVIDED AND INSTALLED BY ELECTRICAL CONTRACTOR.
5. GROUNDING PROVIDED AND INSTALLED BY ELECTRICAL CONTRACTOR.
6. E.C. SHALL VERIFY WIRING IN EDPS COMPLIES WITH DRAWING AND SPECIFICATION.
7. PANEL/UPS PROVIDED AND INSTALLED BY ELECTRICAL CONTRACTOR.

10/23/00

LOAD CALCULATION	208/120V (KVA)	480/277V (KVA)
LIGHTING	6.61	304.02
RECEPTACLES	121.60	0.00
FREEZER/COOLER	116.27	555.45
UNIT HEATERS/BASEBOARD	4.50	0.00
BATTERY CHARGERS	12.48	100.10
AIR CONDITIONING	8.08	589.62
WATER HEATERS	6.50	0.00
EXHAUST FANS	15.32	0.00
MOTORS	32.92	79.08
MEAT DEPARTMENT	51.99	0.00
BAKERY DEPARTMENT (65% DEMAND FACTOR)	49.99	19.23
FOOD SERVICE (65% DEMAND FACTOR)	44.92	0.00
<b>TOTAL CONNECTED LOAD = 2118.68 KVA (2550 AMPERES)</b>	<b>471.18</b>	<b>1647.50</b>
<b>MAIN SERVICE SIZE = 3000 AMPERES AT 480 VOLTS, 3 PHASE, 4 WIRE</b>		



LIGHTING FIXTURE SCHEDULE						
TYPE	MANUFACTURER	NUMBER	LAMPS	MOUNT	WATT	REMARKS
(A)	HOLOPHANE*	RE440EMH-27-C-35-A-6-C6	SYLVANIA MP400/BU MH	PENDANT/CHAIN	455	BOTTOM OF FIXTURE +23" A.F.F. PROVIDE SAFETY HOOKS, FLEXIBLE WIRING SYSTEM & WIRING ACCESSORIES AS REQUIRED. (SEE DETAIL)
(A)	HOLOPHANE*	RE440EMH-27-C-35-A-6-C6-EM	SYLVANIA MP400/BU MH & 1-250W QUARTZ		455	
(B)	HTEK OR LUMARK	TW250M-277-LP	1-250W SMH	WALL	295	PROVIDE WITH LOW TEMPERATURE BALLAST.
(C)	LITHONIA OR METALUX DAYRITE	WB232A12-277-SSB-LP-WH	2-32W T8	WALL	63	PROVIDE ENERGY SAVING LAMPS AND ELECTRONIC BALLASTS. PROVIDE EARTHQUAKE CLIPS.
(D)	LITHONIA OR METALUX DAYRITE	ZSPG432A12.125-277-SSB-LP (TWO BALLASTS)	4-32W T8	RECESS	128	PROVIDE ONE HOUR RATED FIXTURES, TYPE "D" IN VAULT.
(E)	SAME AS "D" EXCEPT WITH (4) SYLVANIA F032835	4-SYLVANIA F032-835 *		RECESS	128	
(F)	COLUMBIA OR ROBERT NUART	SLA196HO-DR/SLBB-196HO-277	1-F96T12 HO	WALL	140	MOUNT ABOVE SIGN W/ LOW TEMP BALLAST AND ES LAMPS AND BALLAST. PROVIDE MIN 30" MOUNTING ARM FROM BUILDING
(G)	LITHONIA OR METALUX DAYRITE	LB432-120	4-32W T8 5000 K CRI=85	CHAIN	128	LAMP SHALL BE CHROMACOLOR W/5000K CRI=85, 2800 LUMENS. MOUNT AT 12'-8" PROVIDE MOUNTING ACCESSORIES
(H)	SERCO **	DH-60	1/150 R-40	SEE DETAIL	150	PROVIDE PLUG-IN & ACCESSORIES AS REQUIRED.
(J)	LITHONIA OR METALUX DAYRITE	VC232WH-277-SSB	2-32W T8	SURFACE	63	PROVIDE ENERGY SAVING LAMPS AND ELECTRONIC BALLASTS.
(K)	LITHONIA OR METALUX DAYRITE	ZSPG332A12-120-SSB-LP	3-32W T8	RECESS	93	PROVIDE ENERGY SAVING LAMPS AND ELECTRONIC BALLASTS.
(L)	LITHONIA OR METALUX DAYRITE	TX 250 MA26-277-WL WHITE TO MATCH CANOPY +15" A.F.F PROVIDE MOUNTING ACCESSORIES (SWIVEL)	1-250W SMH	PENDANT	295	
(M)	LITHONIA OR METALUX DAYRITE	UN232-277-SSB PROVIDE SHATTER PROOF TUBE IN FOOD SERVICE.	2-32W T8	SURFACE/CHAIN	63	PROVIDE ENERGY SAVING LAMPS AND ELECTRONIC BALLASTS. CHAIN MOUNT IN MEZZ.
(N)	LITHONIA OR METALUX DAYRITE	A6AR - 120	1-100W A17	RECESS	100	
(P)	McGRW EDISON GARDCO	GLA91129AS-BZ-LL/MA1007 DROP LENS	1-1000W SMH	POLE	1070	35" ROUND TAPERED STEEL EPOXY ENAMEL POLE TO MATCH FIXTURE. NUMBER OF HEADS SHALL BE PER PLAN, SHEET SE-1. FIXTURE SHALL BE POWDER PAINTED. ELECTRO-STATIC APPLICATION. POLE SHALL HAVE A MIN EPA = 10 FOR 100 MPH WIND W/POLE BASE COVER.
(S)	ABOLITE*	#AD 200INC-120-WHT-LDS96-WL-GB-E-3-WHT	1-200W A21	SURFACE	200	FOOD SERVICE MENU PANEL LIGHTS
(T)	HOLOPHANE *	LPT-22-X-N-H24-B44-MP-2-2	4-40W BIAH F40-835 *	PENDANT	140	MOUNT @ 8'0" A.F.F. W/ AIRCRAFT CABLES. PROVIDE ENERGY SAVING LAMPS AND ELECTRONIC BALLASTS.
(W)	LITHONIA OR METALUX DAYRITE	ZSPG2UA12-277-SSB-LP	2-U32W T8	RECESS	63	PROVIDE ENERGY SAVING LAMPS AND ELECTRONIC BALLASTS.
(X)	LIGHTALARMS EQUAL	2P12Q1/L36-M-UD-DSC W/SELF POWERED BATTERY PACK	SYLVANIA 55090 36PAR36(OAP/NSP)	UNIVERSAL	72	+25" AFF ON TRUSS AIM AT 54" FROM HOR IN EMERGENCY CORRIDOR. PROVIDE MOUNTING ACCESSORIES AS REQUIRED.
(X1)	LITHONIA OR METALUX DAYRITE	H2MSW1-277-H W/SELF POWERED BATTERY PACK	2/20T 6-1/2 2-12W HAL	UNIVERSAL	36	EXIT SHALL BE WHITE WITH GREEN LETTERS AND TWO HALOGEN HEADS. MOUNT ABOVE DOOR. COLOR PER CODE.
(X2)	LITHONIA OR METALUX DAYRITE	MSW2-277-EL W/SELF POWERED BATTERY PACK	2/20T 6-1/2	CHAIN	20	DOUBLE FACE EXIT. (+23" SEE NOTE) ARROW AS INDICATE WITH GREEN LETTER ON WHITE. COLOR PER CODE.

EL PROVIDE EMERGENCY BATTERY PACK OPTION WHERE INDICATED ON PLANS. INCLUDE ALL RELAY, TEST SWITCH AND (1) LAMP OPERATION.

NOTES: COORDINATE INSTALLATION OF FIXTURE TYPES "X", "X1" AND "X2" WITH FIRE MARSHALL. MOUNTING HEIGHTS MAY BE LOWERED ONLY IF DIRECTED IN WRITING BY FIRE MARSHALL.

\* NO SUBSTITUTIONS ALLOWED.

\*\* NO SUBSTITUTIONS ALLOWED. FIXTURE PROVIDED BY G.C. AS PART OF THE DOCK SYSTEM. E.C. TO PROVIDE LAMPS.

ONE LINE DIAGRAM, LIGHTING FIXTURE SCHEDULE, LEGEND, & GENERAL NOTES

PROJECT NO: 99-154  
 ARCHITECT REFERENCE NO: 98-508A  
 T.E. Inc.  
 830 N. RIVERSIDE - SUITE 200  
 RENTON, WA 98056  
 PHONE: 206-241-2012  
 FAX: 206-241-3101

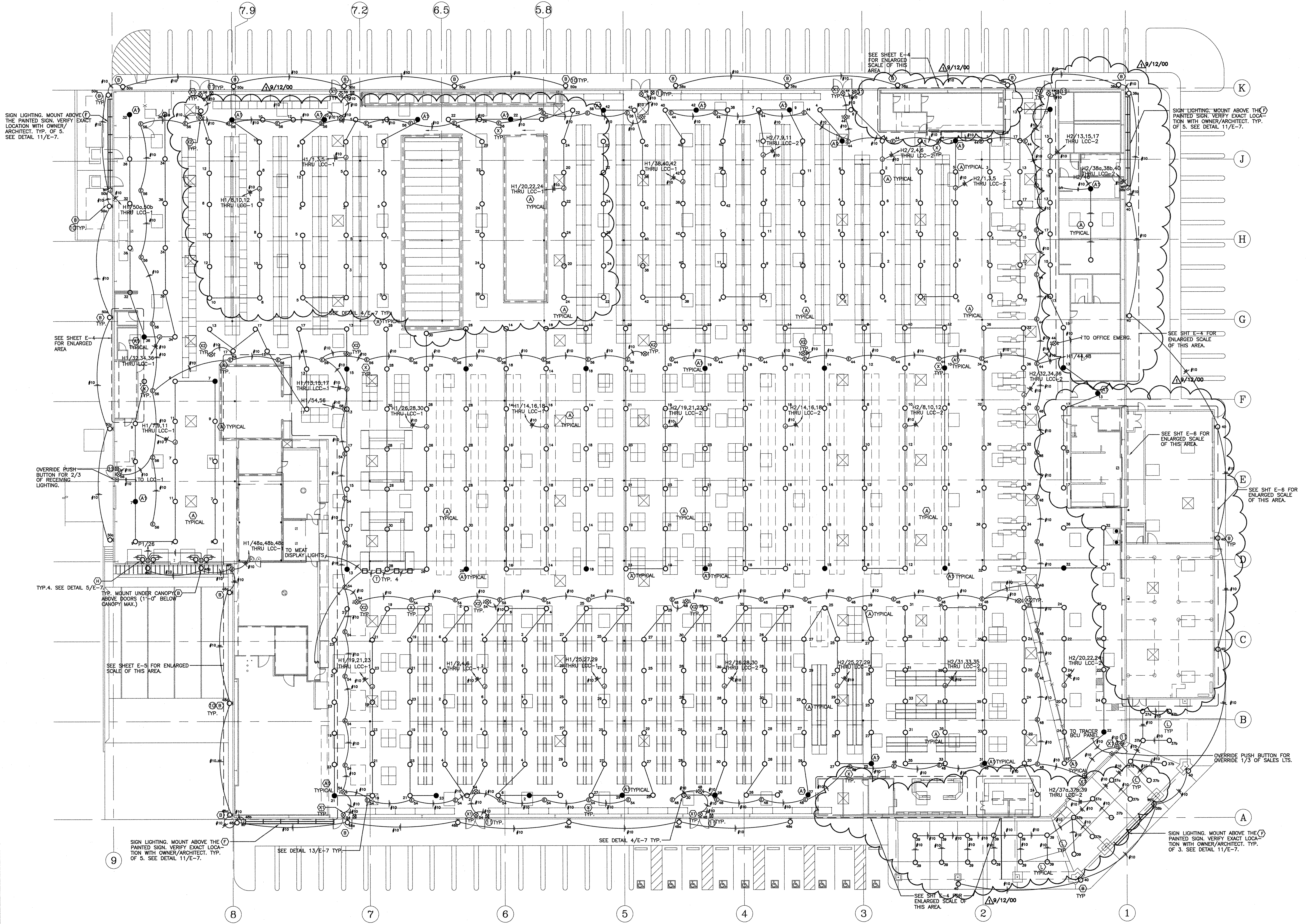
NEW WAREHOUSE  
 9TH ST. SW. &  
 39TH AVE SW.  
 PUYALLUP, WA

COSTCO WHOLESALE

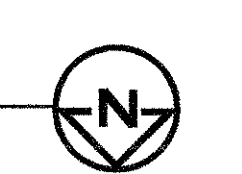
E-1

ISSUE DATE: APRIL 13, 2000  
 REVISION DATE: JUNE 19, 2000  
 CHECKED: ANT  
 DRAWN: BY

4/17/00 SUBMITTED FOR BUILDING PERMIT  
 4/29/00 SUBMITTED FOR BID  
 4/29/00 OMBY BID CORRECTIONS  
 4/29/00 BUILDING PERMIT CORRECTIONS  
 6/19/00 CONSTRUCTION DRAWINGS



**LIGHTING PLAN**  
SCALE: 1/16" = 1'-0"



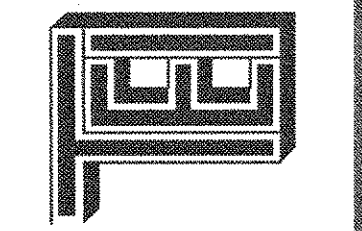
**PLAN NOTES:**

- ① WIRING: ELECTRICAL CONTRACTOR IS TO INSTALL A COMPLETE FLEXIBLE HARD WIRING SYSTEM. SYSTEM SHALL BE MATCH WITH FIXTURE MANUFACTURE. FLEXIBLE WIRING SYSTEM IS TO FOLLOW THE SAME SWITCHING AND CIRCUIT CONFIGURATION AS SHOWN. NO DEVIATION ALLOWED.
- ② THE SYSTEM SHALL BE CAPABLE OF REMOVING AN INDIVIDUAL FIXTURE WITHOUT CAUSING ANY REMAINING FIXTURES IN THE SYSTEM TO BE EXTINGUISHED.
- ③ THE SYSTEM SHALL BE PRE-MANUFACTURED AND SUPPLIED IN ACCORDANCE WITH N.E.C. ARTICLE 604 AND UL STANDARD FOR SAFETY #183.
- ④ SEE ARCHITECTURAL PLAN FOR EXACT FLOOR LAYOUT.
- ⑤ LIGHT FIXTURES SHALL BE 3" MIN. AWAY FROM DRAFT CURTAINS.
- ⑥ ALL LIGHTING INCLUDING EMERGENCY LIGHTING HOME RUNS AND BRANCH CIRCUITS SHALL BE OVERHEAD RUNS. NO UNDERGROUND ALLOWED.
- ⑦ ALL WORK TO COMPLY WITH 1999 NEC.
- ⑧ ALL EQUIPMENT TO BE U.L. LISTED.
- ⑨ LIGHT FIXTURES IN CONTACT WITH INSULATION TO BE U.L. LISTED FOR THERMAL BARRIER OR PROVIDE 3" MINIMUM CLEARANCE.
- ⑩ VERIFY WITH ARCH. ELEVATIONS PLAN FOR WALL PACKS LOCATIONS AND MOUNTING HEIGHT.
- ⑪ E.C. SHALL MAKE ALL FINAL CONNECTIONS TO DOOR HARDWARE INCLUDING ALL LOW VOLTAGE WIRING. SEE WIRING DETAIL IN DOOR HARDWARE SPECIFICATION SECTION 8710 DIVISION 8. PROVIDE SQ-D CLASS 9070 K50D4 W/UE7 CLASS 9991 ENCLOSURE STEP DOWN TRANSFORMER.

LIGHTING PLAN

PROJECT NO: 99-154  
NO PART OF THIS DOCUMENT MAY BE USED OR COPIED IN WHOLE OR IN PART WITHOUT THE WRITTEN CONSENT OF T.E. INC.

NEW WAREHOUSE  
9TH ST. SW. &  
39TH AVE SW.  
PUYALLUP, WA



T.E. Inc.  
690 N. RIVERSIDE - SUITE 200  
BENTON, WA 99005  
PHONE: 206-241-2012  
FAX: 206-241-3101

ISSUE DATE: APRIL 13, 2000  
4/17/00 SUBMITTED FOR BUILDING PERMIT  
4/29/00 SUBMITTED FOR BID  
4/29/00 OWNER/ BID CORRECTIONS  
6/19/00 BUILDING PERMIT CORRECTIONS  
6/19/00 CONSTRUCTION DRAWINGS

REVISION DATE: JUNE 19, 2000

DRAWN BY:

CHECKED: ANT