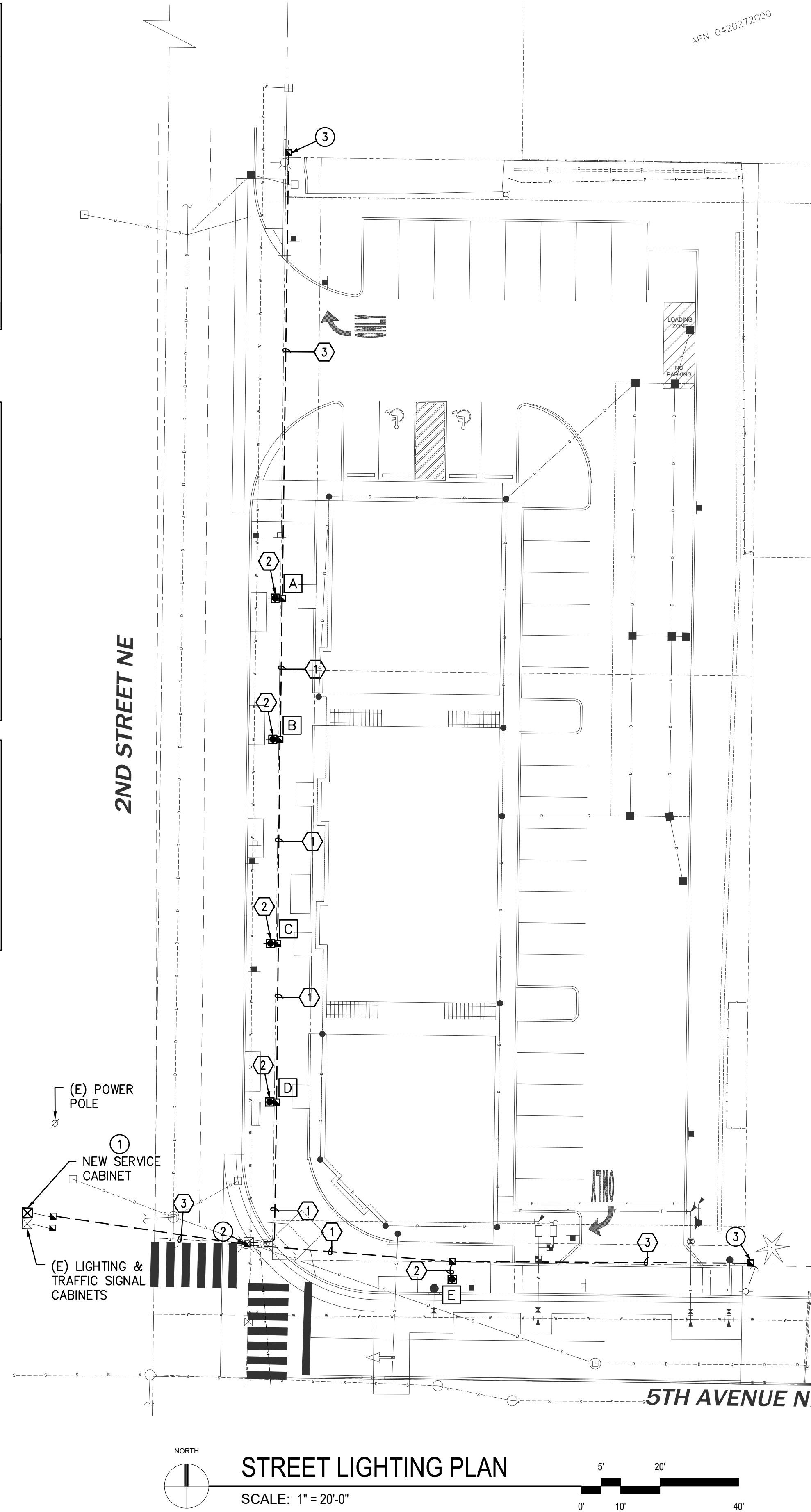


ELECTRICAL LEGEND	
SYMBOL	DESCRIPTION
ELECTRICAL SERVICE	
▲	POLE MOUNTED TRANSFORMER
⊠	STREET LIGHTING METER CABINET
⊠	HANDHOLE PER WSDOT STANDARD DETAIL J-110
⊠	WIRE (LOAD) RUN
⊠	FIXTURE SYMBOL
⊠	NEW DECORATIVE STREET LIGHT - POLE AND FIXTURE
⊠	EXISTING STREET LIGHT
---	OVERHEAD ELECTRIC UTILITY
---	OVERHEAD POWER
---	WIRING CONCEALED BELOW FLOOR OR GRADE

STREET LIGHT SCHEDULE						
ST. LT. NO.	CRCT	TYPE	FIXTURE HT.	NORTHING	EASTING	COMMENTS
A	(E)	KING LUMINAIRE K107, RAL6005 GREEN, 120V - 277V	14FT	684324.51	1194935.05	SEE NOTE 1
B	(E)	KING LUMINAIRE K107, RAL6005 GREEN, 120V - 277V	14FT	684288.64	1194934.44	SEE NOTE 1
C	(E)	KING LUMINAIRE K107, RAL6005 GREEN, 120V - 277V	14FT	684236.8	1194933.88	SEE NOTE 1
D	(E)	KING LUMINAIRE K107, RAL6005 GREEN, 120V - 277V	14FT	684196.53	1194933.61	SEE NOTE 1
E	(E)	KING LUMINAIRE K107, RAL6005 GREEN, 120V - 277V	14FT	684151.49	1194979.99	SEE NOTE 1

NOTE:
1. PROVIDE CONCRETE BASE TO COMPLY PER CITY STANDARDS DETAIL 01.05.06 SHEET E1.3.

CONDUIT AND WIRE SCHEDULE					
RUN NO.	CONDUIT SIZE		CONDUCTOR SIZE		REMARKS
	ILLUM	SPARE	ILLUM.	GRN GND	
1	2"	2"	2#6	1#6	SCH. 40 PVC.
2	2"		2#6	1#6	SCH. 40 PVC.
3		(2) 2"			SCH. 80 PVC.
4					



PLAN KEY NOTES

- 1 PROVIDE NEW LIGHTING SERVICE CABINET LOCATED ON NORTH SIDE OF THE EXISTING SIGNAL CABINET, ON NW CORNER OF 2ND ST NE & 5TH AVE NE. TAP INTO POWER FEEDING EXISTING CABINET AND EXTEND TO NEW. SEE DETAIL ON E1.3.
- 2 REMOVE CONDUCTORS FEEDING EXISTING JUNCTION BOX AND REFEED FROM NEW CABINET. JUNCTION BOX TO SERVE AS UTILITY POINT OF CONSTRUCTION FOR NEW LIGHTING. PROVIDE CONDUIT AND CONDUCTOR PER CITY REQUIREMENTS.
- 3 TERMINATE CONDUIT RUN WITH JUNCTION BOX.

NOTE:

1. COORDINATE ALL WORK WITH CITY STREET LIGHT TECHNICIAN - CARY BERTRAM AT (253) 341-8439 PRIOR TO MATERIALS ORDERING AND CONSTRUCTION.
2. ALL JUNCTION BOXES SHALL BE PLACED BEHIND THE SIDEWALK UNLESS OTHERWISE NOTED.
3. MAINTAIN 5-FT SEPARATION FROM FIRE HYDRANTS TO ALL ELECTRICAL EQUIPMENT. VERIFY HYDRANT LOCATION(S) PRIOR TO TRENCHING.
4. CONTRACTOR SHALL OBTAIN WRITTEN AUTHORIZATION FROM PUGET SOUND ENERGY (PSE) FOR THE ELECTRICAL SERVICE LOCATION. IF IT IS DETERMINED AN ALTERNATE SERVICE CONNECTION, THE ALTERNATE SERVICE LOCATION SHALL BE APPROVED BY THE CITY AND ALL CHANGES IN THE DESIGN SHALL BE RECORDED ON AS-BUILT PLANS.
5. A COPY OF THE LOAD CALCULATION SHALL BE PROVIDED TO THE CITY'S SIGNAL TECHNICIAN PRIOR TO INSTALLATION.
6. CONTRACTOR SHALL CONTACT THE CITY'S SIGNAL TECHNICIAN WHEN THE LIGHTS ARE READY TO BE ENERGIZED.
7. ALL CONDUIT SHALL BE INSTALLED WITH 24 INCHES MINIMUM COVER.
8. ALL CONDUIT SHALL BE SCHEDULE 40 PVC UNLESS OTHERWISE INDICATED, ALL CONDUCTORS SHALL BE COPPER WITH TYPE USE XLP INSULATION.
9. PROVIDE 36 INCH CLEARANCE BETWEEN EXISTING WATER MAIN AND LIGHT FIXTURE FOOTING.
10. PEDESTRIAN STREETLIGHT OFFSET MUST MAINTAIN 8-FOOT CLEAR WALKABLE PATH.
11. PRIOR TO CUT-OVER FOR THE NEW SERVICE CABINET, THE CONTRACTOR MUST PROVIDE A DETAILED IMPLEMENTATION PLAN WITH THE CITY TO MINIMIZE DOWNTIME FOR THE TRAFFIC SIGNAL. CITY MAY REQUIRE A UPO TO BE AVAILABLE TO ASSIST CONTROL TRAFFIC WHILE THE DARK SIGNAL IS BEING CONNECTED TO THE NEW POWER SOURCE. MUST COORDINATE WITH STREET LIGHT TECHNICIAN (CARY BERTRAM) 2 WEEKS PRIOR TO ENSURE AVAILABILITY TO ASSIST WITH SIGNAL POWER DOWN/ POWER UP PROCEDURE.

APPROVED

BY _____
CITY OF PUYALLUP
DEVELOPMENT ENGINEERING

DATE _____

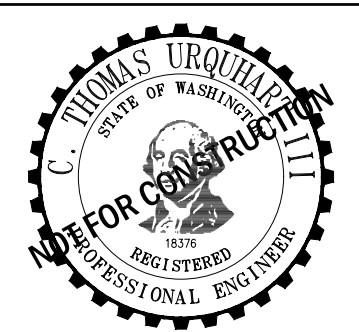
NOTE: THIS APPROVAL IS VOID AFTER 180 DAYS FROM APPROVAL DATE. THE CITY WILL NOT BE RESPONSIBLE FOR ERRORS AND/OR OMISSIONS ON THESE PLANS. FIELD CONDITIONS MAY DICTATE CHANGES TO THESE PLANS AS DETERMINED BY THE DEVELOPMENT ENGINEERING MANAGER.

HULTZ & BHN
e n g i n e e r s a n d a r c h i t e c t s

1111 Fawcett Ave Suite 100 Tacoma, WA 98402
Phone: (253) 383-3257 Fax: (253) 383-3283
genera@hultzbh.com Job Number: 21-146.2

PUYALLUP 2ND STREET APARTMENTS

**2ND STREET & 5TH AVENUE NE
PUYALLUP, WA**



Rev.	Description

Phase: REVIEW SET
Drawn: AD
Approved: PC
Date: 04-01-2022

SHEET TITLE
SITE PLAN -
ELECTRICAL

SHEET
E1.1

ISSUED FOR# _____

0" 1" 1"

SHEET SIZE IS TRUE SCALE WHEN ABOVE LINE MEASURES AS NOTED



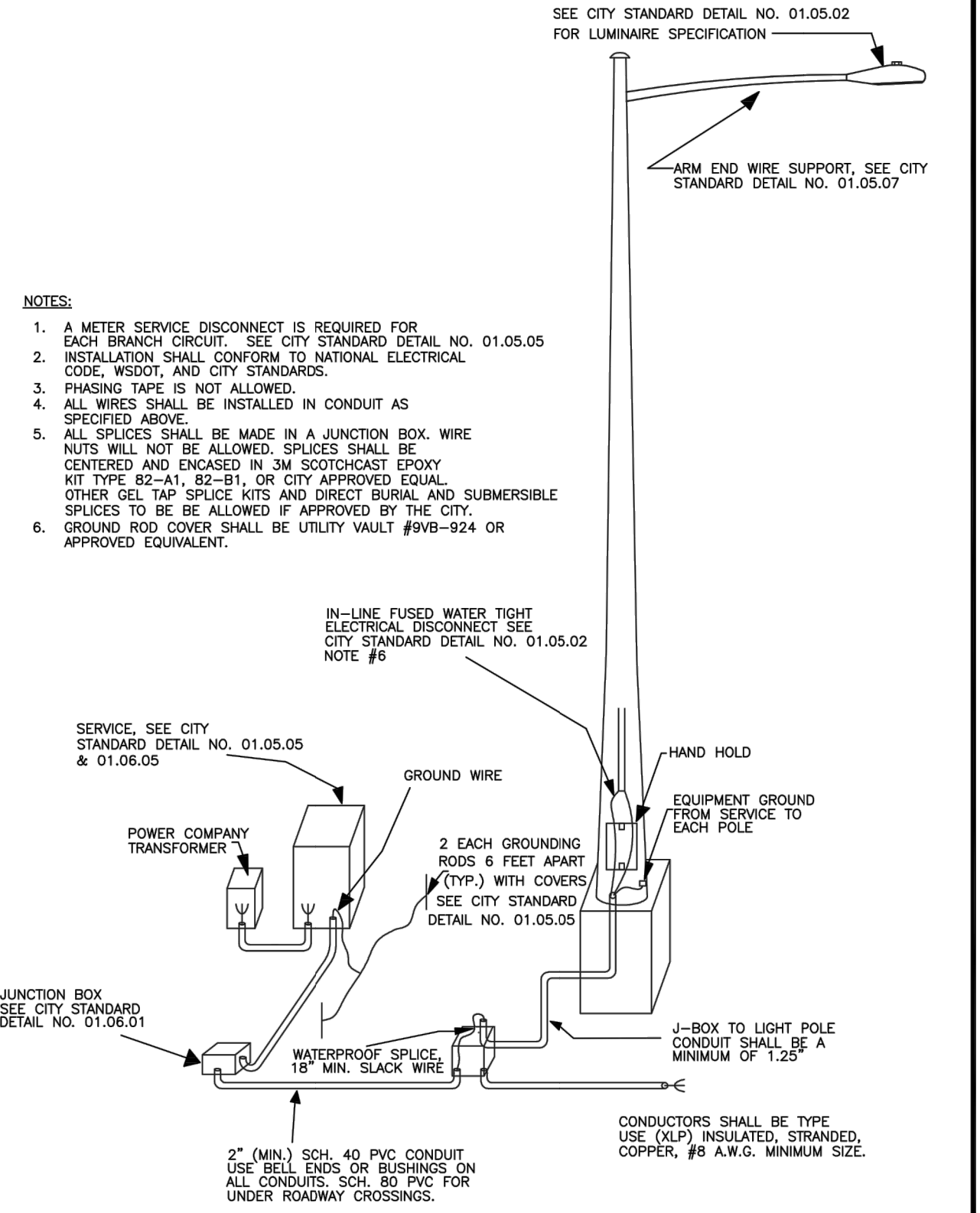
DESIGNED BY: PNH/CS
DRAWN BY: TADU/JOR/SAL
CHECKED BY: TADU/JOR/SAL
DATE: 04-01-2022

STREET LIGHTING SPECIFICATIONS

- 1. 30-FOOT STEEL STREETLIGHT STANDARD
a. DIMENSIONS
STREETLIGHT STANDARDS SHALL PROVIDE A FIXTURE MOUNTING HEIGHT OF 30'0" PLUS OR MINUS 6" WITH A TYPICAL 12 FOOT MAST ARM WITH A THREE FOOT OVERHANG.
BASE PLATE SHALL HAVE SLOTTED HOLES TO ACCOMMODATE 1-INCH ANCHOR BOLTS, AND 1 1/2" BOLT CIRCLE WITH MINIMUM CLEARANCE OF 1" BETWEEN BOLT AND POLE.
HANDHOLE CENTER SHALL BE LOCATED APPROXIMATELY 12 INCHES FROM THE BASE PLATE, ROTATED 270 DEGREES FROM MAST ARM SO AS THE HANDHOLE IS LOCATED ON THE SIDE OPPOSING ONCOMING TRAFFIC.
b. STRENGTH
POLES SHALL MEET ALL STRENGTH REQUIREMENTS OF AASHTO FOR 90 MPH SCOTCH WHEN USED WITH A LUMINAIRE WEIGHING 48 POUNDS WITH A E.P.A. OF 1.1 SQUARE FEET. ALL ATTACHING BOLTS AND SCREWS THAT ARE NOT GALVANIZED SHALL BE STAINLESS STEEL.
c. FINISH
THE POLES AND ALL HARDWARE SHALL BE HOT DIPPED GALVANIZED, MINIMUM .3 MIL THICKNESS.
d. MAST ARM ATTACHMENT SHALL BE SECURED BY 3 BOLTS.
e. EACH POLE SHALL HAVE HANDHOLE (WITH COVER), GROUND LUG AND REMOVABLE POLE CAP.
f. EACH CITY POLE SHALL HAVE A BLACK 4" TO 6" LETTER C STENCILED ON ROADWAY SIDE OF POLE 16" ABOVE GRADE.
2. ANCHORAGE
a. POLES SHALL BE ANCHORED WITH 4 BOLTS, 1"x3/8"x4" #BUNC WITH HOT DIPPED GALVANIZING AFTER THREADS ARE CUT. GALVANIZED AREA SHALL EXTEND FROM THREADED END FOR A MINIMUM OF 12 INCHES. BOLTS SHALL BE PROVIDED WITH 2 GALVANIZED NUTS AND FLAT WASHERS FOR LEVELING. SHIMS WILL NOT BE USED.
b. A NON-SHRINKING GROUT SHALL BE INSTALLED WITH ONE 1/2" DRAIN HOLE UNDER THE BASE PLATE AFTER THE ENGINEER HAS APPROVED THE POLE INSTALLATION.
3. CONDUIT
ALL CONDUIT SHALL BE BURIED A MINIMUM OF 24 INCHES DEEP. ALL ROADWAY CROSSINGS SHALL BE RIGID METALLIC OR SCHEDULE 80 PVC. CONDUIT SHALL CONFORM TO SECTION 9-29 OF WSDOT STANDARD SPECIFICATIONS. SCHEDULE 80 PVC MAY BE USED IN LOCATIONS OTHER THAN ROADWAY CROSSINGS.

CITY OF PUYALLUP
DEVELOPMENT ENGINEERING and PUBLIC WORKS DEPARTMENTS

STREET LIGHT SPECIFICATIONS
CITY STANDARD
01.05.01



CITY OF PUYALLUP
DEVELOPMENT ENGINEERING and PUBLIC WORKS DEPARTMENTS

TYPICAL STREET LIGHT INSTALLATION
CITY STANDARD
01.05.03

- ILLUMINATION NOTES:
1. ALL WORK SHALL BE IN ACCORDANCE WITH CITY OF PUYALLUP PUBLIC WORKS STANDARDS AND WSDOT STANDARDS AND SPECIFICATIONS.
2. THE LOCATIONS OF FEATURES SHOWN ARE APPROXIMATE AND SHALL BE VERIFIED BY THE CONTRACTOR PRIOR TO CONSTRUCTION START.
3. UTILITY LOCATIONS ARE APPROXIMATE AND SHALL BE VERIFIED IN THE FIELD BY THE CONTRACTOR PRIOR TO ANY ILLUMINATION WORK.
4. ALL WORK SHALL BE CONSISTENT WITH UTILITY AGENCY REQUIREMENTS. THE CONTRACTOR SHALL COORDINATE WITH AFFECTED UTILITY AGENCIES THROUGHOUT THE PROJECT. THE CONTRACTOR SHALL BE RESPONSIBLE FOR ANY DAMAGE TO UTILITIES.
5. CONDUIT LOCATIONS ARE SHOWN FOR ILLUSTRATIVE PURPOSES. ACTUAL LOCATIONS SHALL BE DETERMINED BY THE CONTRACTOR IN THE FIELD.
6. CONTRACTOR SHALL COORDINATE WITH THE CITY SIGNAL/ILLUMINATION TECHNICIAN CARY BERTRAM AT (253) 341-8439 PRIOR TO CONSTRUCTION.
7. THE LOCATION OF ALL CONDUITS, JUNCTION BOXES, POLES, AND CABINETS SHOWN ON THIS PLAN MAY BE ADJUSTED IN THE FIELD TO AVOID CONFLICTS AND MEET ADA REQUIREMENTS. ALL FINAL LOCATIONS SHALL BE APPROVED BY THE CITY TRAFFIC ENGINEER PRIOR TO CONSTRUCTION.
8. JUNCTION BOX LOCATIONS SHOWN ARE FOR ILLUSTRATIVE PURPOSES ONLY. JUNCTION BOXES SHALL BE FIELD LOCATED BY THE CONTRACTOR WITH DIRECTION FROM THE CITY.
9. CONTRACTOR SHALL ADJUST JUNCTION BOX LIDS TO BE FLUSH WITH TOP OF SIDEWALK.
10. ANY NEW JUNCTION BOX WHICH WILL BE LOCATED WITHIN OR PARTIALLY WITHIN SIDEWALK SHALL HAVE LIDS AND FRAMES WITH A NON-SLIP COATING ON THE TOP SURFACE EQUAL TO MEBAC1 OR SLIPNOT#3.

APPROVED
BY: CITY OF PUYALLUP DEVELOPMENT ENGINEERING
DATE:
NOTE: THIS APPROVAL IS VOID AFTER 180 DAYS FROM APPROVAL DATE. THE CITY WILL NOT BE RESPONSIBLE FOR ERRORS AND/OR OMISSIONS ON THESE PLANS. FIELD CONDITIONS MAY DICTATE CHANGES TO THESE PLANS AS DETERMINED BY THE DEVELOPMENT ENGINEERING MANAGER.

HULTZ & BHU
ENGINEERS INC.
1111 Fawcett Ave Suite 100 Tacoma, WA 98402
Phone: (253) 383-3257 Fax: (253) 383-3283
general@hultzbhu.com Job Number: 21-146.2

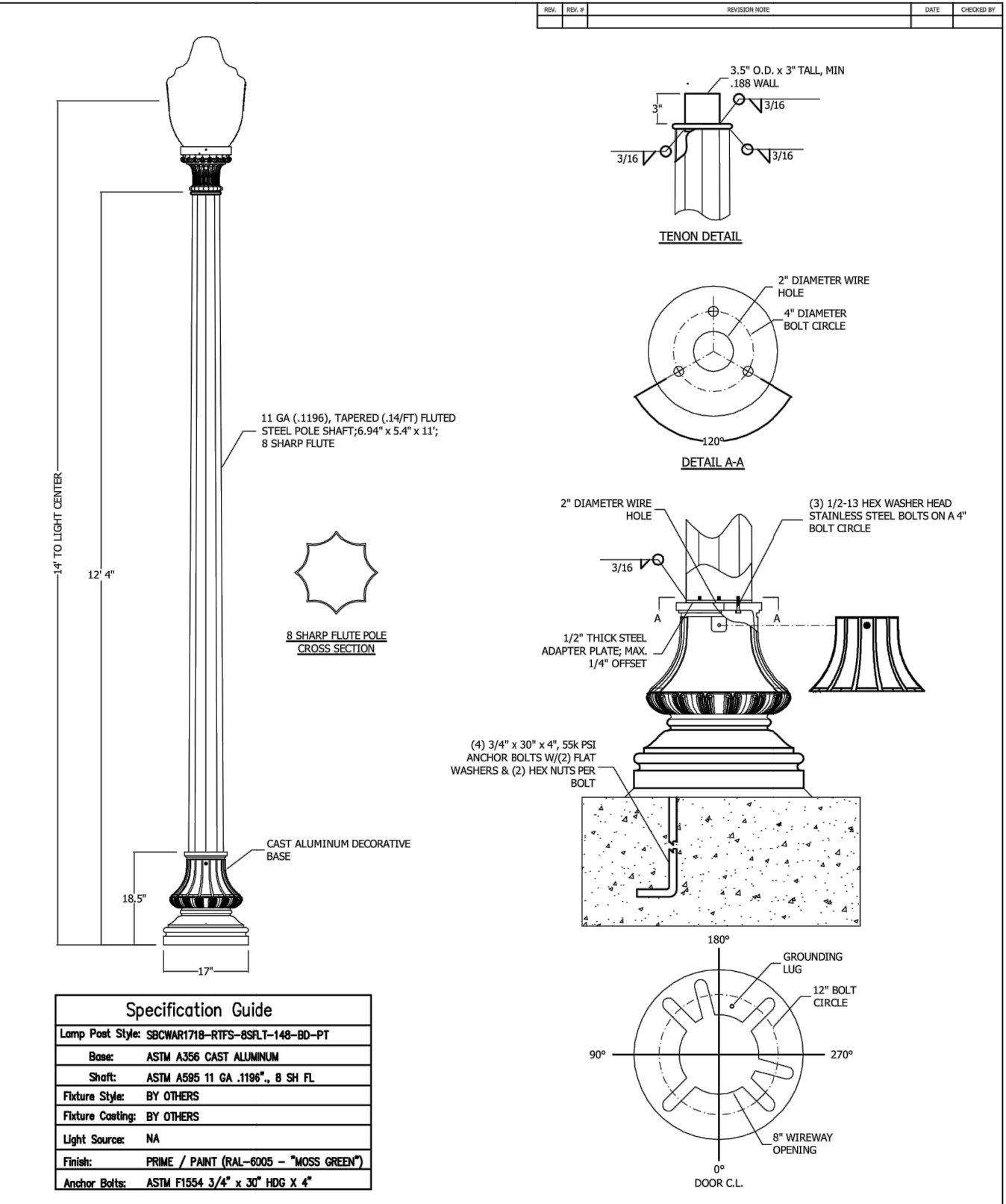
PUYALLUP 2ND STREET APARTMENTS
2ND STREET & 5TH AVENUE NE PUYALLUP, WA

(STR LIGHT SPECS CONTINUED)

- 4. JUNCTION BOXES (WHEN REQUIRED)
JUNCTION BOXES SHALL BE INSTALLED AT LOCATIONS AS SHOWN ON THE PLANS. THEY WILL CONFORM TO WSDOT STANDARD PLAN J-40.10-02, TYPE 1. THEY SHALL BE LEVEL WITH THE SIDEWALK GRADE AND FIRMLY BEDDED TO PREVENT FUTURE SETTLING. JUNCTION BOXES ARE PREFERRED NOT TO BE INSTALLED IN THE SIDEWALK. THE COVER SHALL BE GALVANIZED AND GROUNDING. THE LETTERS "JT" SHALL BE ETCHED ON THE COVER. (SEE CITY STANDARD DETAIL NO. 01.06.01). IF THE JUNCTION BOX IS NOT IN THE SIDEWALK THEN IT SHALL HAVE A CONCRETE COLLAR. IF THE JUNCTION BOX IS IN THE SIDEWALK THEN IT SHALL HAVE A NON-SLIP SURFACE TREATMENT. (SEE CITY STANDARD DETAIL NO. 01.06.01).
5. CONDUCTORS, WIRES, ETC.
WIRE CONDUCTORS FOR UNDERGROUND FEEDER RUNS AND FOR CIRCUITRY FROM THE IN-LINE FUSE IN THE POLES TO THE JUNCTION BOX SHALL BE 600 VOLT, SINGLE CONDUCTOR STRANDED COPPER AND INSULATED WITH USE GRADE POLYVINYL CHLORIDE COMPOUND (PVC) OR APPROVED EQUAL IN ACCORDANCE WITH THE INSULATED POWER CABLE ENGINEER'S ASSOCIATION SPECIFICATIONS. AN AWG NO. 8 GREEN INSULATED STRANDED COPPER WIRE WILL BE RUN TO THE SERVICE GROUND LUG ON EACH POLE. FEEDERS SHALL BE SIZED IN ACCORDANCE WITH THE NATIONAL ELECTRICAL CODE. WIRES INSIDE THE POLE BETWEEN BALLAST AND IN-LINE FUSES SHALL BE ROME 20 AWG 10 STRANDED POLE AND BRACKET WIRE OR APPROVED EQUAL. SPLICES WILL BE ALLOWED IN JUNCTION BOXES AND POLE BASES ONLY. NO MORE THAN 2 CONDUITS WILL BE ALLOWED INSIDE THE STREET POLE.
6. FUSES
LUMINAIRE FUSING AND ELECTRICAL CONNECTIONS AT LIGHT STANDARD BASES SHALL CONFORM TO SECTION 9-29.7 OF THE STATE OF WASHINGTON STANDARD SPECIFICATIONS AND AS SHOWN ON THE UNIFORM LUMINAIRE WIRING DETAIL IN THE APPENDIX. IN-LINE FUSE HOLDERS SHALL BE SEC MODEL 1791-SF WITH FNM-5 FUSES OR APPROVED EQUAL. (REFER TO CITY STANDARD DETAIL NO. 01.06.01)
7. LUMINAIRES AND LAMPS
RESIDENTIAL STREETS AND NEIGHBORHOOD COLLECTORS:
LEOTEX LED GC1-40E-MW-NV-2-530 (67 WATT LED)
ARTERIALS AND COMMERCIAL COLLECTORS:
GE EVOLVE LED ERS2-E-0-HX-EX-5-40 (130 WATT LED)
THE CITY WILL ENERGIZE THE STREET LIGHTS WHEN A HOME IS OCCUPIED ADJACENT TO A STREET LIGHT OR IMMEDIATELY ACROSS THE STREET. AT THE DEVELOPER'S REQUEST, STREET LIGHTS MAY BE ENERGIZED PRIOR TO OCCUPANCY OF HOMES. HOWEVER, THE DEVELOPER OR BUILDER SHALL ASSUME FULL RESPONSIBILITY FOR ELECTRICAL POWER COSTS AND REPAIR COSTS DUE TO VANDALISM, THEFT, OR CONSTRUCTION.
8. SAFE WIRING LABELS
THE CONTRACTOR IS ADVISED THAT SAFE WIRING LABELS REQUIRED BY LABOR AND INDUSTRIES SHALL APPLY ON THIS PROJECT. (ELECTRICAL INSPECTION STICKER)
9. GUARANTEE
THE CONTRACTOR SHALL SURRENDER TO THE CITY OF PUYALLUP ANY GUARANTEE OR WARRANTY ACQUIRED BY HIM AS A NORMAL TRADE PRACTICE IN CONNECTION WITH THE PURCHASE OF ANY MATERIALS OR ITEMS USED IN THE CONSTRUCTION OF THE ILLUMINATION.
10. LOCATION
SEE CITY STANDARD SECTION 01.01 ROADWAY DESIGN.

CITY OF PUYALLUP
DEVELOPMENT ENGINEERING and PUBLIC WORKS DEPARTMENTS

STREET LIGHT SPECIFICATIONS (CONT.)
CITY STANDARD
01.05.02



SOUTH COAST LIGHTING & DESIGN
1111 W. CALLETON, STE. 200, SAN CLAYTON, CA 94705
Phone: (415) 489-0041 Fax: (415) 489-0042
www.southcoastlighting.com

Rev. Alteration Date By
LUMINAIRE SPECIFICATIONS
CATALOG NO.: K107R-B3AR-XX-XX(SSL) -XXXX-120:277V-K13-3K-#3
QUANTITY:
GLOBE MOUNTING: SPLIT RING
OPTICAL SYSTEM: BAFFLED ARRAY ACRYLIC RIPPLED
IES CLASS.: SEE CHART
WATTAGE: SOLID STATE LIGHTING
CCT: 3000K
LINE VOLTAGE: 120:277V
POLE ADAPTOR: K13
PAINT: TEXTURE
OPTIONS: #3 FINIAL
CUSTOMER APPROVAL & DATE:
PROJECT/CUSTOMER: PUYALLUP
DRAWN BY: SHALUN C AT: CHECKED BY: DATE: REVISION:
DRAWING TYPE: CONCEPT DRAWING DRAWING NUMBER: PUYALLUP-1

THOMAS HIRSHMAN
STATE OF WASHINGTON
REGISTERED PROFESSIONAL ENGINEER

Rev. Description
Phase: REVIEW SET
Drawn: AD
Approved: PC
Date: 04-01-2022
SHEET TITLE
ELECTRICAL NOTES AND DETAILS

SHEET
E1.2
ISSUED FOR #
SHEET SIZE IS TRUE SCALE WHEN ABOVE LINE MEASURES AS NOTED

Call 811
two business days before you dig

DATE PLOTTED: Monday, March 21, 2023, 5:03:37 PM
PLOTTED BY: ANUSIUS
DRAWN BY: ANUSIUS
DATE PLOT: 3/20/23 08:52:14 AM
PLOTTER: HP DesignJet T1300

APPROVED

BY _____
CITY OF PUYALLUP
DEVELOPMENT ENGINEERING

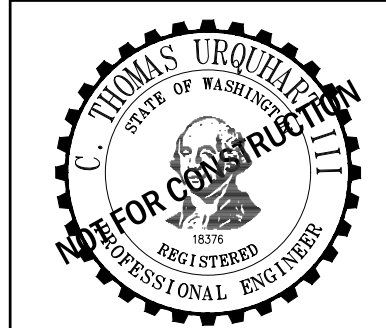
DATE _____

NOTE: THIS APPROVAL IS VOID AFTER 180 DAYS FROM APPROVAL DATE. THE CITY WILL NOT BE RESPONSIBLE FOR ERRORS AND/OR OMISSIONS ON THESE PLANS. FIELD CONDITIONS MAY DICTATE CHANGES TO THESE PLANS AS DETERMINED BY THE DEVELOPMENT ENGINEERING MANAGER.

HULTZ BHU
Engineering Inc.
1111 Fawcett Ave Suite 100
Tacoma, WA 98402
Phone: (253) 383-3257 Fax: (253) 383-3283
genera@hultzbhu.com Job Number: 21-146.2

PUYALLUP 2ND STREET APARTMENTS

**2ND STREET & 5TH AVENUE NE
PUYALLUP, WA**



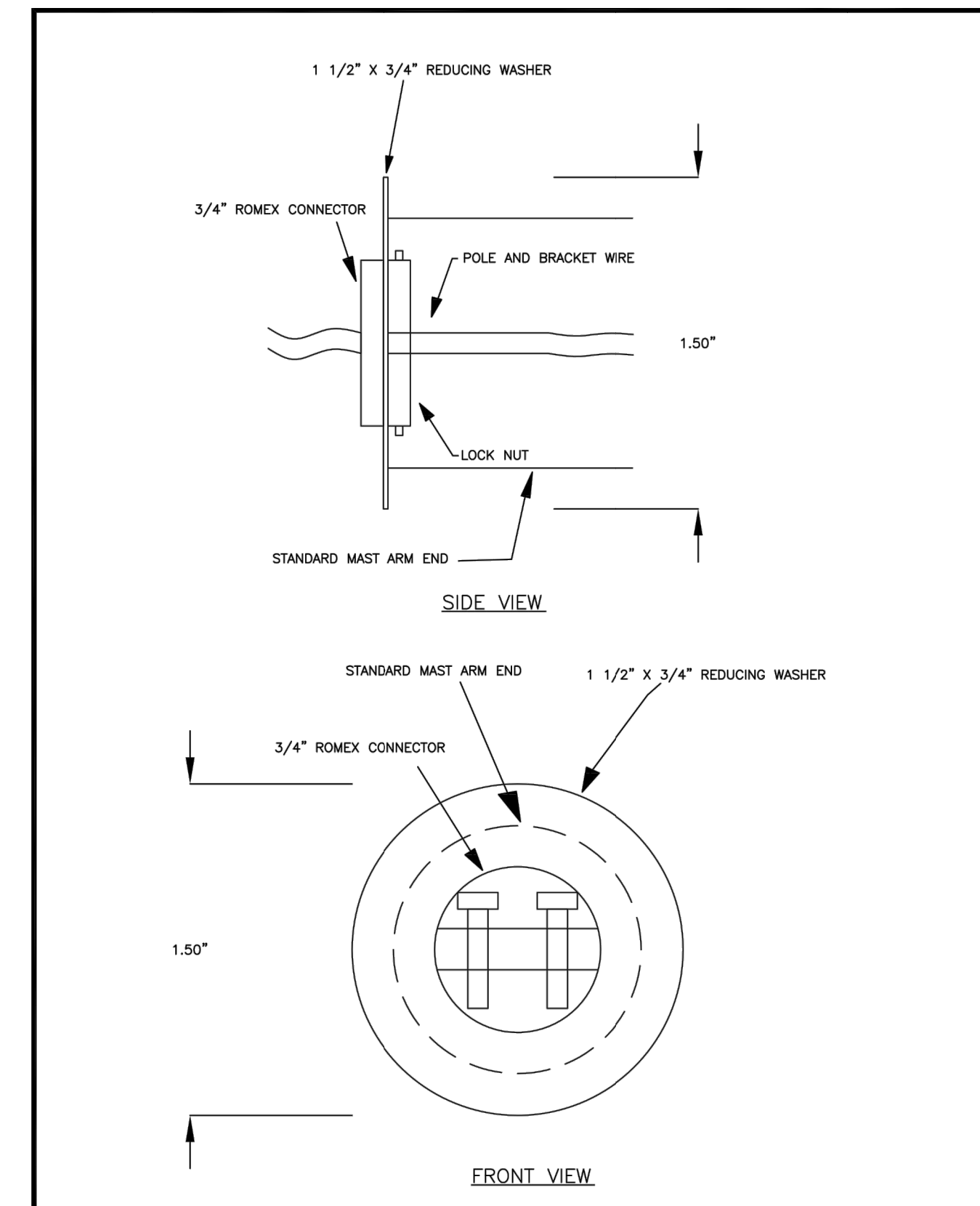
Rev.	Description

Phase: REVIEW SET
Drawn: AD
Approved: PC
Date: 04-01-2022

SHEET TITLE
**ELECTRICAL
NOTES AND
DETAILS**

SHEET
E1.3

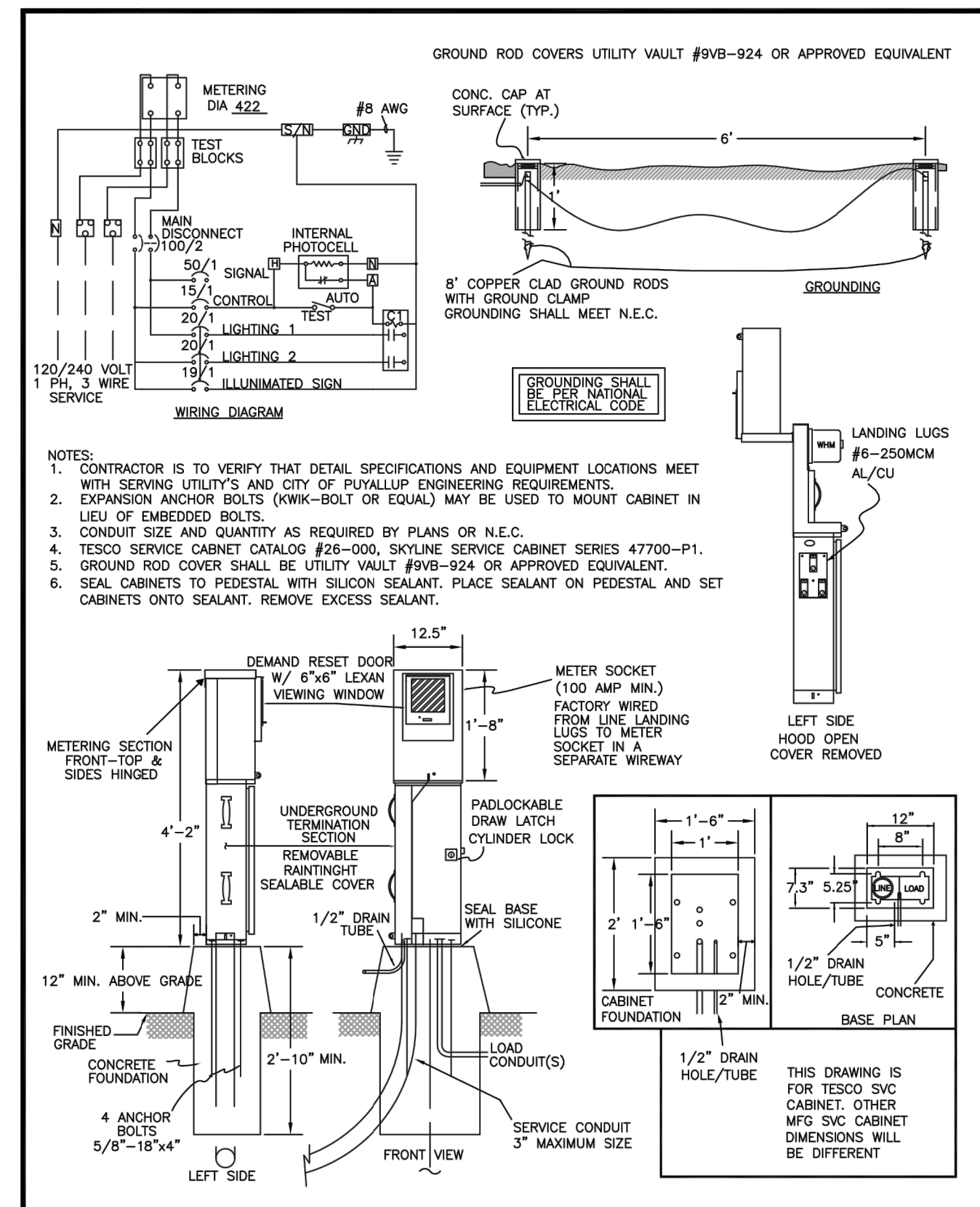
ISSUED FOR # _____
0" 1" 2" 3" 4" 5" 6" 7" 8" 9" 10"
SHEET SIZE IS TRUE SCALE WHEN ABOVE LINE MEASURES AS NOTED



CITY OF PUYALLUP
DEVELOPMENT ENGINEERING and PUBLIC WORKS DEPARTMENTS

STREET LIGHT POLE AND BRACKET WIRE SUPPORT AT ARM END

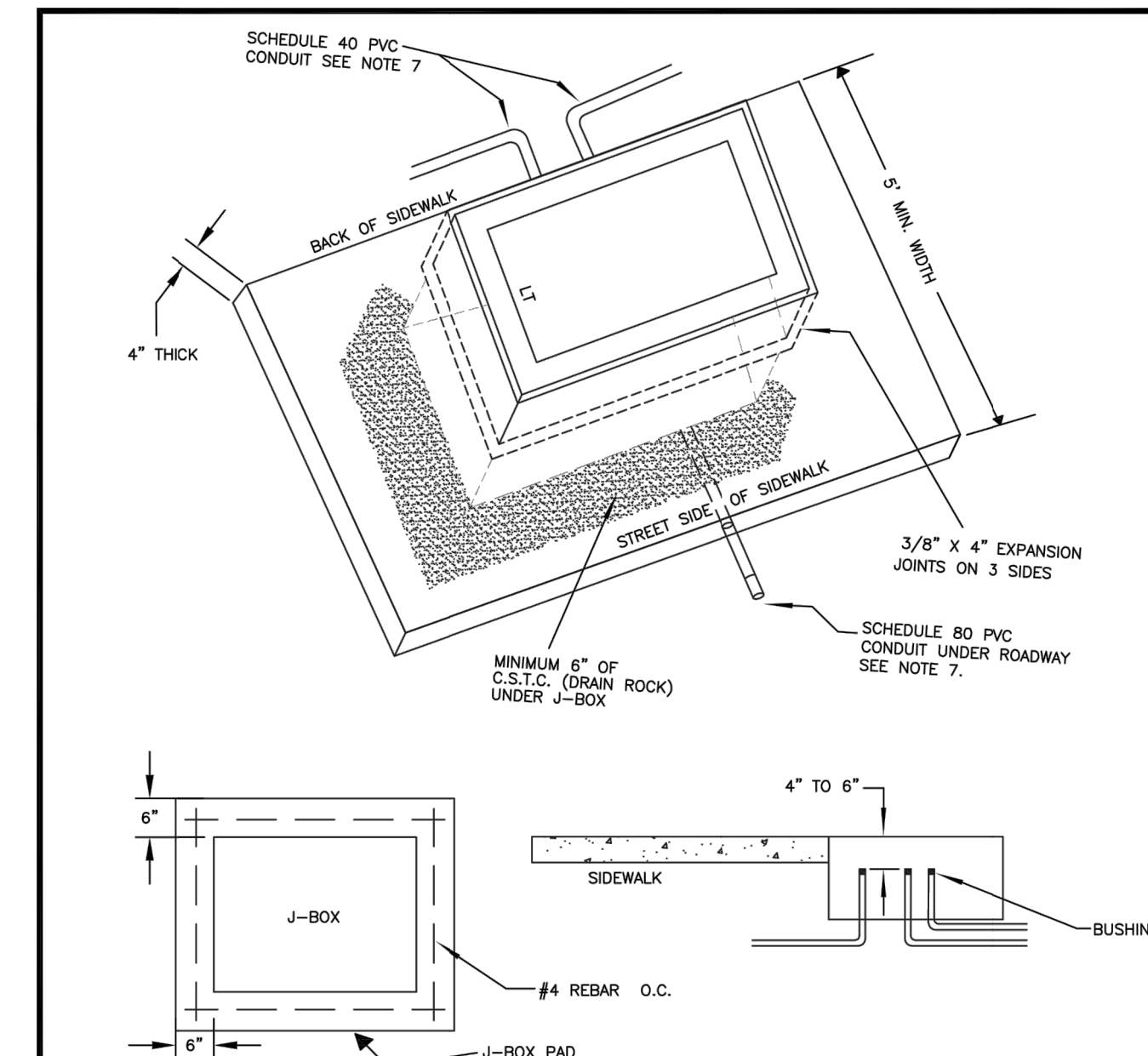
DESIGNED BY LIM BROWN/OVERMAN	CHECKED BY LINDA LIAN	APPROVED BY COLLEEN BARBER	REVISED BY N/A	CITY STANDARD
FILE NAME P:\WORK\COMADMIN\STREETLIGHT\2020\11-19-2020-01-01	DATE APPROVED 11/19/2020	DATE REVISED N/A	SCALE 1:1	01.05.07



CITY OF PUYALLUP
DEVELOPMENT ENGINEERING and PUBLIC WORKS DEPARTMENTS

STREET LIGHT SERVICE METER CABINET FOUNDATION

DESIGNED BY LIM BROWN/OVERMAN	CHECKED BY LINDA LIAN	APPROVED BY COLLEEN BARBER	REVISED BY N/A	CITY STANDARD
FILE NAME P:\WORK\COMADMIN\STREETLIGHT\2020\11-19-2020-01-01	DATE APPROVED 11/19/2020	DATE REVISED N/A	SCALE 1:1	01.05.05

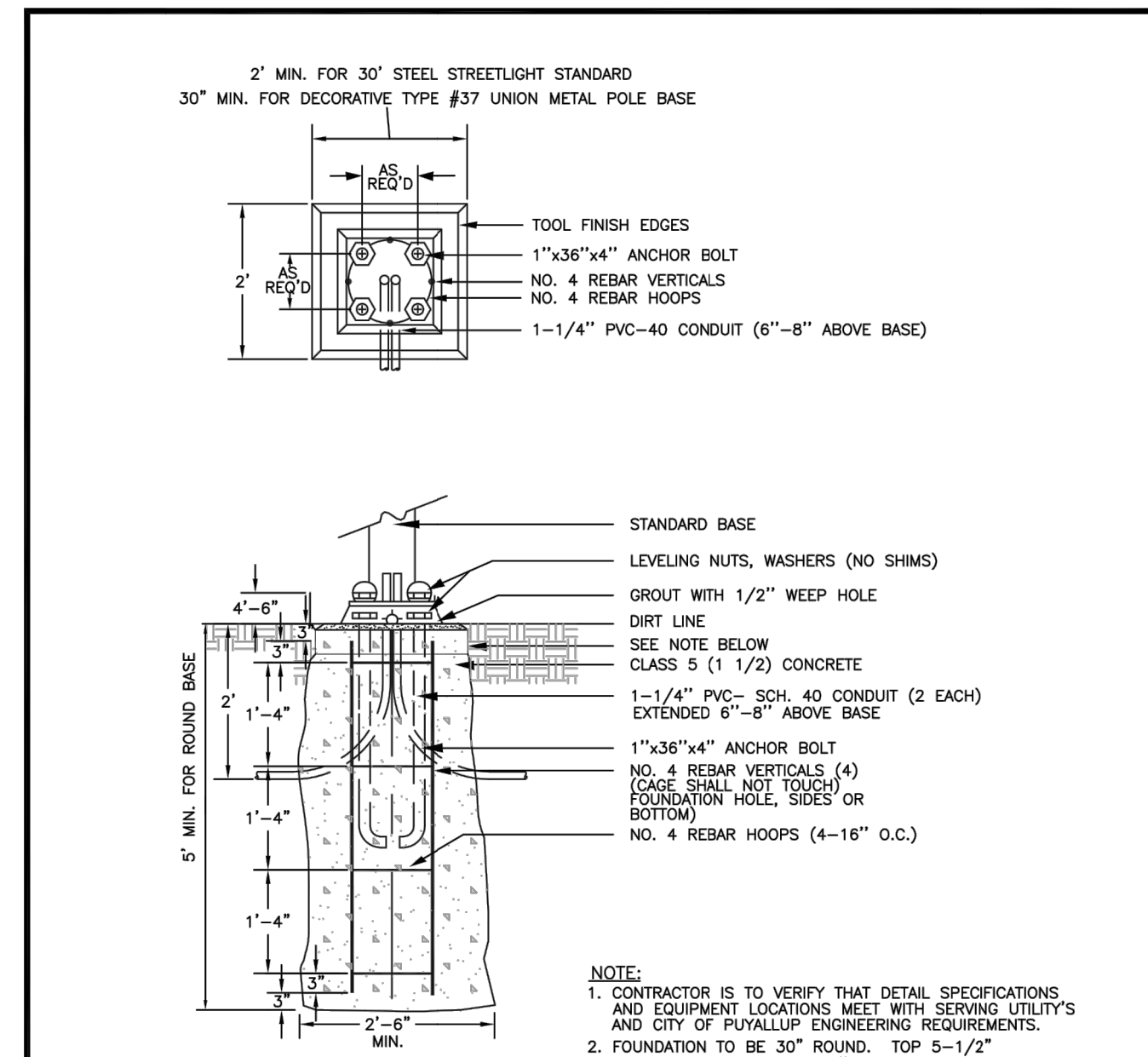


- NOTES:**
- SEE W.S.D.O.T. STANDARD PLAN J-40.10-03 FOR J-BOX TYPE AND SIZE.
 - ALL LIDS SHALL BE GALVANIZED STEEL AND MARKED WITH AN "LT" OR "TS" PER W.S.D.O.T. STANDARD PLAN J-40.10-03. NON-SLIP SURFACE TREATMENT SHALL BE MEBAC1 OR SlipNOT #3.
 - TYPE III SHALL BE DUAL HINGED.
 - IF NO SIDEWALK EXISTS, A CONCRETE COLLAR SHALL BE CONSTRUCTED 6" THICK, 6" WIDE, COMPLETELY SURROUNDING THE J-BOX WITH ONE #4 REBAR ON CENTER EACH SIDE AND TIED AT CORNERS. CLASS 5 (1 1/2) CONCRETE SHALL BE USED. BY PERMISSION, COLLAR MAY ENCOMPASS JUNCTION BOX AND STREET LIGHT. PREFERRED LOCATION OF JUNCTION BOX SHOULD NOT BE IN THE SIDEWALK, BUT RATHER AT THE BACK OF SIDEWALK WITH 3-SIDED COLLAR.
 - CONDUIT RUNS SHALL NOT EXCEED 195 FEET BETWEEN JUNCTION BOXES.
 - JUNCTION BOX SHALL BE LOCATED WITHIN 10 FEET OF EACH LUMINAIRE POLE AND AT ROAD CROSSING.
 - CONDUIT MATERIAL SHALL BE AS SPECIFIED IN WSDOT STANDARD SPECIFICATION 8-20.3(5) OR AS MODIFIED ON SPECIAL PROVISIONS.
 - STREET LIGHT JUNCTION BOXES SHALL BE WELDED SHUT, 2"-2" LONG WELDS MIN., IMMEDIATELY AFTER L & I AND CITY INSPECTIONS TO HELP PREVENT WIRE THEFT. OTHER THEFT PREVENTION METHODS MAY BE USED IF APPROVED BY THE CITY.

CITY OF PUYALLUP
DEVELOPMENT ENGINEERING and PUBLIC WORKS DEPARTMENTS

JUNCTION BOX

DESIGNED BY LIM BROWN/OVERMAN	CHECKED BY LINDA LIAN	APPROVED BY COLLEEN BARBER	REVISED BY N/A	CITY STANDARD
FILE NAME P:\WORK\COMADMIN\STREETLIGHT\2020\11-19-2020-01-01	DATE APPROVED 11/19/2020	DATE REVISED N/A	SCALE 1:1	01.06.01



- NOTE:**
- CONTRACTOR IS TO VERIFY THAT DETAIL SPECIFICATIONS AND EQUIPMENT LOCATIONS MEET WITH SERVING UTILITY'S AND CITY OF PUYALLUP ENGINEERING REQUIREMENTS.
 - FOUNDATION TO BE 30" ROUND. TOP 5-1/2" OF FOUNDATION WILL BE 24" SQUARE.
- TEMPLATE FOR ANCHOR BOLT CIRCLE WILL BE A SINGLE PIECE OF 3/4" x 2 1/2" WOOD WITH 4 BOLT HOLES TO FORM A BOLT CIRCLE OF 11-1/2" TO MATCH POLE MANUFACTURER'S BASE DESIGN.
- LOWER LEVELING NUTS SHOULD BE CLOSE TO CONCRETE (ABOUT 1") TO PREVENT EXCESSIVE STRESSES IN THE ANCHOR BOLTS CAUSED BY TORSIONAL FORCES IN THE POLE. ANCHOR BOLTS WILL EXTEND ABOVE TOP NUT, 2 THREADS MINIMUM AND 5/8" MAXIMUM.

CITY OF PUYALLUP
DEVELOPMENT ENGINEERING and PUBLIC WORKS DEPARTMENTS

CONCRETE STREETLIGHT FOUNDATION TYPICAL

DESIGNED BY LIM BROWN/OVERMAN	CHECKED BY LINDA LIAN	APPROVED BY COLLEEN BARBER	REVISED BY N/A	CITY STANDARD
FILE NAME P:\WORK\COMADMIN\STREETLIGHT\2020\11-19-2020-01-01	DATE APPROVED 11/19/2020	DATE REVISED N/A	SCALE 1:1	01.05.06

C:\PROJECTS\2021\11-19-2020-01-01\11-19-2020-01-01-146 E1.3.dwg
 PLOT DATE: 11/19/2020 10:52:14 AM
 PLOT BY: ANILKUMAR