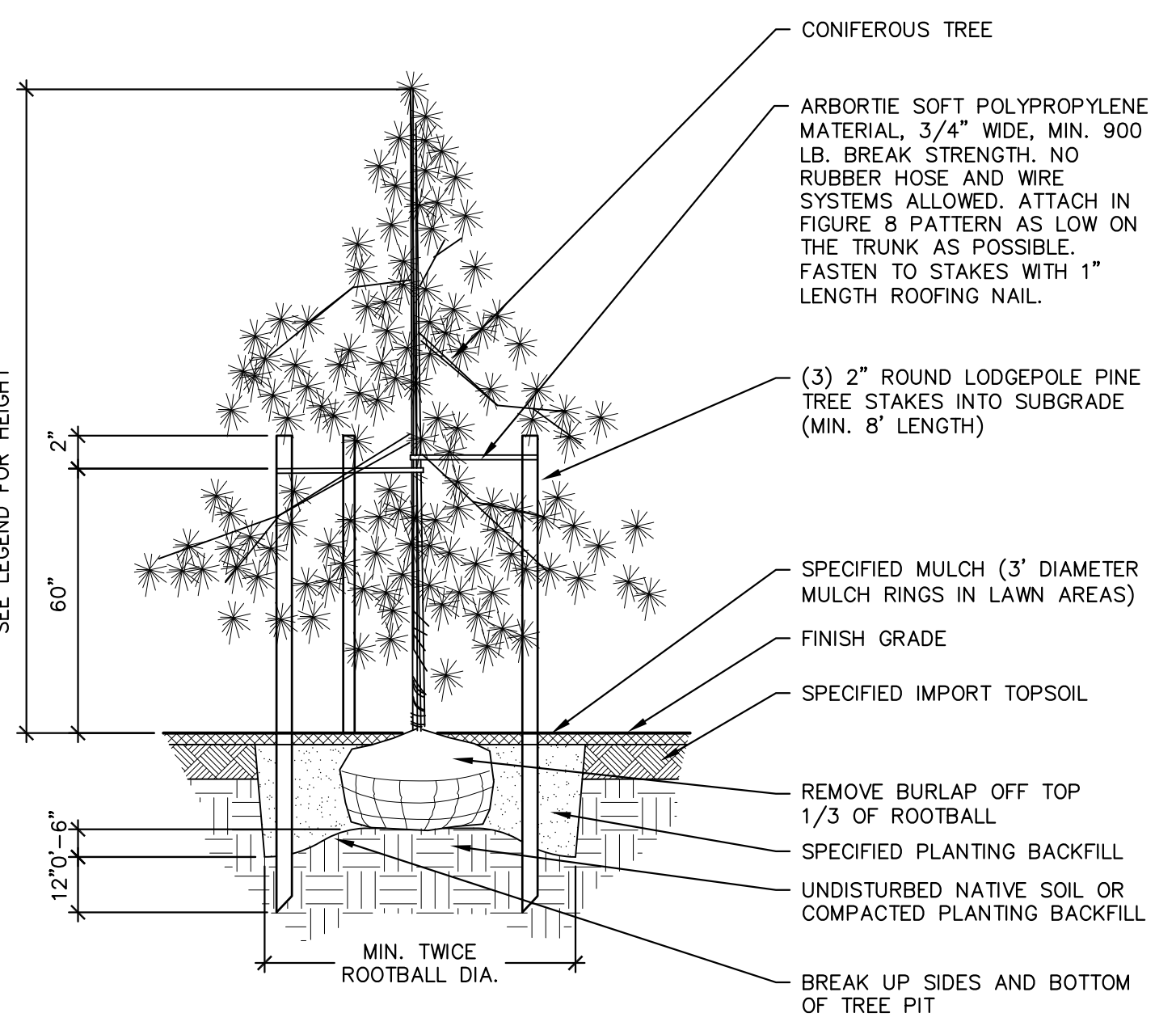
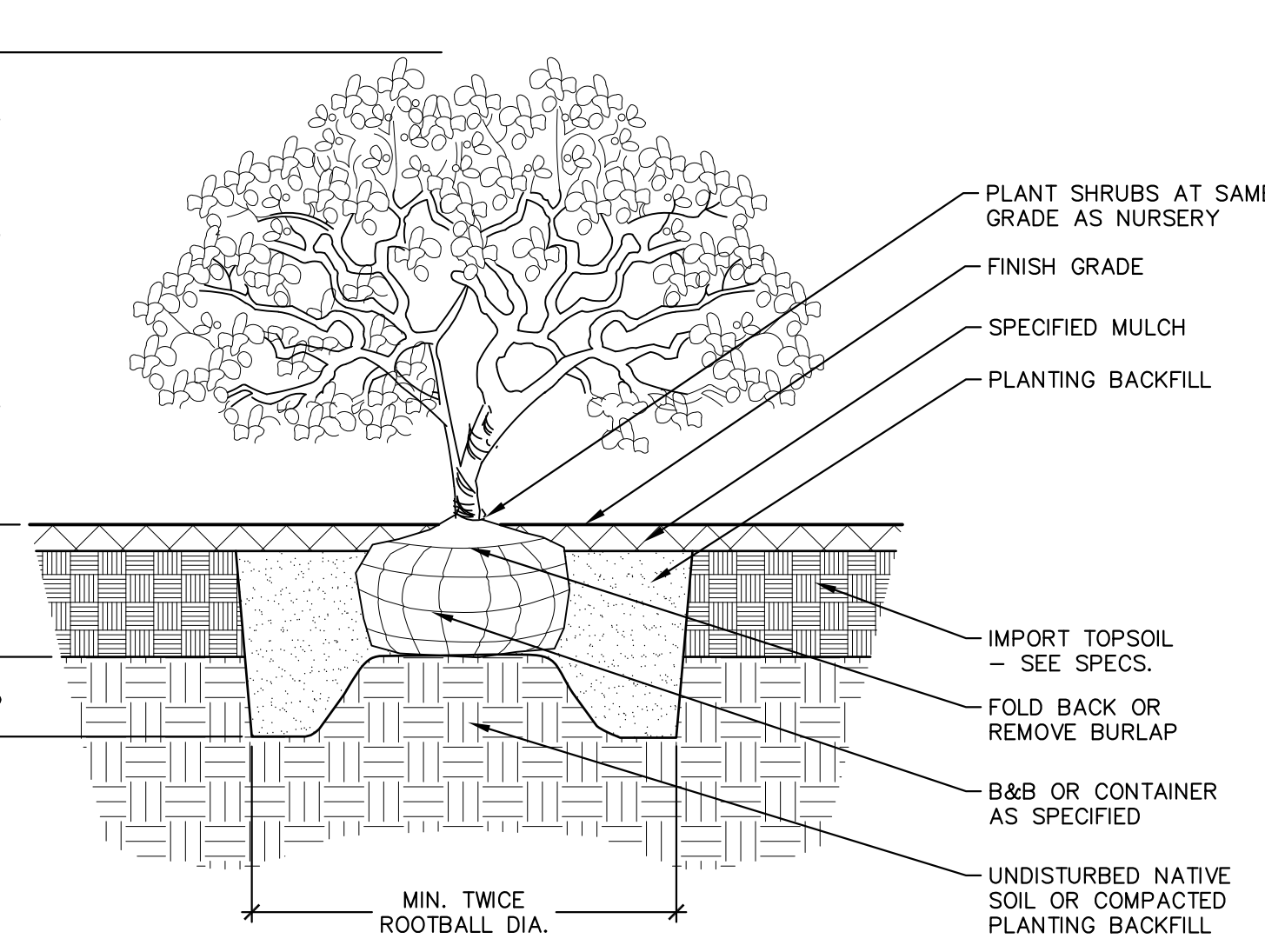


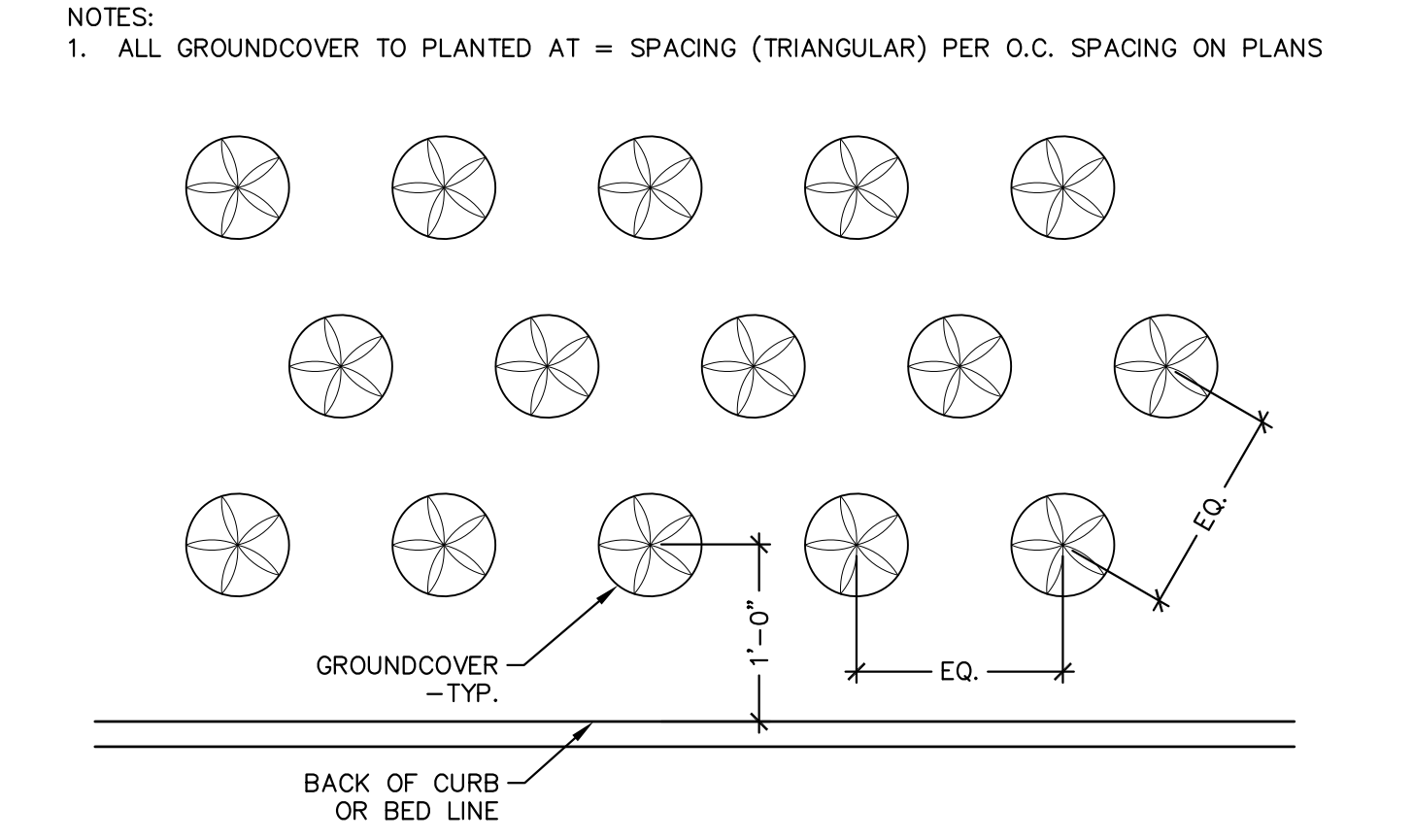
**1 DECIDUOUS TREE PLANTING** NTS



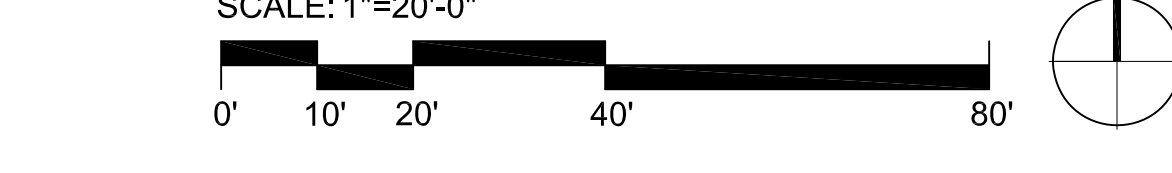
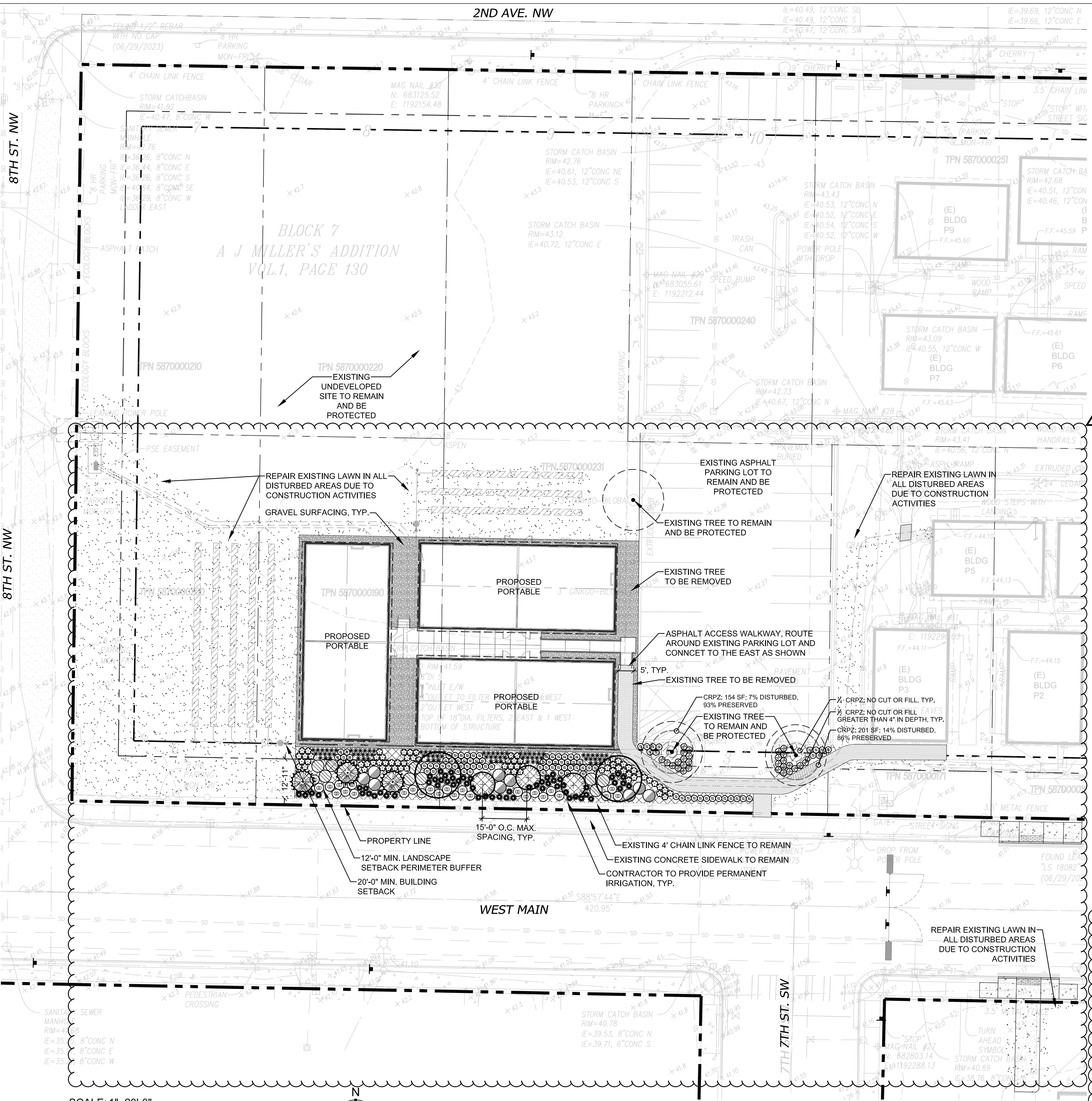
**2 CONIFEROUS TREE PLANTING** NTS



**3 SHRUB PLANTING** NTS



**4 GROUND COVER PLANTING** NTS



**CITY OF PUYALLUP**  
 Planning Division  
 Approved Landscape Plan  
 (253) 864-4165

Staff: RNBrown  
 Date: 10/23/2024

THIS APPROVAL IS VOID AFTER 180 DAYS FROM APPROVAL DATE. THE CITY IS NOT RESPONSIBLE FOR ERRORS OR OMISSIONS ON THESE PLANS. FIELD CONDITIONS MAY DICTATE CHANGES TO THESE PLANS AS DETERMINED BY THE PLANNING DIRECTOR, DESIGNEE, OR PROJECT PLANNER.

NOTE: If street trees are required, Call Planning Division for final inspection. (253) 864-4165 (Option 3) Root barriers are required around street trees in accordance with city standard detail. Top soil shall be installed in accordance with city standards - field verification required. Failure to install top soil and root barriers in accordance with the city standards may result in rejection of installation.

**GENERAL NOTES:**

- DO NOT SCALE DRAWINGS.
- REFER TO CIVIL DRAWINGS FOR GRADING, UTILITY AND ADDITIONAL LAYOUT INFORMATION.
- REFER TO ARCHITECTURAL FOR BUILDING GRID LAYOUT INFORMATION.
- ELECTRICAL INFORMATION IS CONCEPTUAL ONLY, REFER TO ELECTRICAL DRAWINGS.
- ALL CONCRETE PAVING, SCORELINES, AND OTHER MISC. SITE IMPROVEMENTS ARE LAID OUT PERPENDICULAR AND PARALLEL TO THE BUILDING, TYP., UNLESS NOTED. CURVES COME TANGENT TYPICAL, UNLESS NOTED.
- VERIFY LOCATION OF ALL OVERHEAD AND UNDERGROUND UTILITIES BEFORE BEGINNING WORK.
- NOTIFY THE LANDSCAPE ARCHITECT IMMEDIATELY OF ANY DISCREPANCIES FOUND IN PLANS OR DEVIATIONS FROM DOCUMENTED ON-SITE CONDITIONS. FAILURE TO NOTIFY THE LANDSCAPE ARCHITECT IN A TIMELY MANNER SHALL RESULT IN CONTRACTOR TAKING RESPONSIBILITY FOR ANY AND ALL REMEDIAL MEASURES REQUIRED.

**CITY TOPSOIL CALCULATION & INSPECTION REQUIREMENTS**

- A TOTAL OF 8" MIN. DEPTH TOPSOIL ESTIMATED TO BE 300 CU. YD. SHALL BE INSTALLED IN ALL NEW LANDSCAPE AREAS PER CITY OF PUYALLUP SOIL STANDARDS.
- TOPSOIL TO CONTAIN 10% DRY WEIGHT IN PLANTING BEDS AND 5% ORGANIC MATTER CONTENT IN TURF AREAS WITH A PH FROM 6.0 TO 8.0 OR MATCHING THE PH OF THE ORIGINAL UNDISTURBED SOIL.
- THE TOPSOIL LAYER SHALL HAVE A MIN. DEPTH OF 8" EXCEPT WHERE TREE ROOTS LIMIT THE DEPTH OF INCORPORATION OF AMENDMENTS NEEDED TO MEET THE CRITERIA.
- SUBSOILS BELOW THE TOPSOIL LAYER SHOULD BE SCARIFIED AT LEAST 6" WITH SOME INCORPORATION OF THE UPPER MATERIAL TO AVOID STRATIFIED LAYERS, WHERE FEASIBLE.
- CONTRACTOR REQUIRED TO SUBMIT DELIVERY SHEETS AND DEMONSTRATE COMPLIANCE WITH TOPSOIL REQUIRED AND SPECIFIED ON PLANS AT THE TIME OF FINAL INSPECTION.
- REFER TO SPECIFICATIONS FOR ADDITIONAL REQUIREMENTS.

**SITE IMPROVEMENTS LEGEND**

SYMBOL	ITEM	DESCRIPTION
[Pattern]	GRAVEL SURFACING	5/8" MINUS CRUSHED ROCK, GRAY COLOR, COMPACTED TO 95%
[Pattern]	SEEDED LAWN	SEE SPECIFICATIONS
[Symbol]	EXISTING TREES TO PRESERVE	SAVE AND PROTECT, SEE CIVIL FOR TREE PROTECTION DETAILS

**PLANT SCHEDULE**

SYMBOL	BOTANICAL / COMMON NAME	SIZE	CONDITION / REMARKS	QTY
<b>DECIDUOUS TREES</b>				
[Symbol]	CORNUS KOUSA KOUSA DOGWOOD	MIN. 2" CAL., 10'-12' MIN. HT.	MATCHED, B&B, WELL BRANCHED ABOVE 6' HT.	2
<b>EVERGREEN TREES</b>				
[Symbol]	PSEUDOTSUGA MENZIESII DOUGLAS FIR	MIN. 8'-10' HT.	FULL AND BUSHY TO BASE, B&B OR CONT.	3
[Symbol]	THUJA PLICATA 'HOGAN' HOGAN CEDAR	MIN. 8'-10' HT.	FULL AND BUSHY TO BASE, B&B OR CONT.	3
<b>SHRUBS</b>				
[Symbol]	CAREX OSHIMENSIS 'EVERILLO' EVERCOLOR EVERILLO JAPANESE SEDGE	MIN. 2 GAL. CONTAINER	FULL & BUSHY, SPACING AS SHOWN ON PLAN	84
[Symbol]	CORNUS STOLONIFERA 'KELSEY' KELSEY DOGWOOD	MIN. 5 GAL. CONTAINER	FULL & BUSHY, SPACING AS SHOWN ON PLAN	68
[Symbol]	ILEX CRENATA 'GREEN ISLAND' GREEN ISLAND JAPANESE HOLLY	MIN. 5 GAL. CONTAINER	FULL & BUSHY, SPACING AS SHOWN ON PLAN	89
[Symbol]	MAHONIA AQUIFOLIUM OREGON GRAPE	MIN. 5 GAL. CONTAINER	FULL & BUSHY, SPACING AS SHOWN ON PLAN	9
[Symbol]	PENNISSETUM ORIENTALE 'KARLEY ROSE' KARLEY ROSE FOUNTAIN GRASS	MIN. 2 GAL. CONTAINER	FULL & BUSHY, SPACING AS SHOWN ON PLAN	60
[Symbol]	RIBES SANGUINEUM RED FLOWERING CURRANT	MIN. 5 GAL. CONTAINER	FULL & BUSHY, SPACING AS SHOWN ON PLAN	9
[Symbol]	ROSA NUTKANA NOOTKA ROSE	MIN. 5 GAL. CONTAINER	FULL & BUSHY, SPACING AS SHOWN ON PLAN	26
[Symbol]	SPIRAEA BETULIFOLIA 'TOR' BIRCHLEAF SPIREA	MIN. 5 GAL. CONTAINER	FULL & BUSHY, SPACING AS SHOWN ON PLAN	28
<b>GROUND COVER AREAS</b>				
[Pattern]	ARTOSTAPHYLOS UVA-URSI KINKINNICK	MIN. 2 GAL. CONTAINER	12" O.C. TRIANG. SPAC., START FIRST ROW 8" FROM EDGE, FULL & BUSHY	168
[Pattern]	MAHONIA REPENS CREEPING MAHONIA	MIN. 2 GAL. CONTAINER	12" O.C. TRIANG. SPAC., START FIRST ROW 8" FROM EDGE, FULL & BUSHY	1,917

**PLANTING NOTES:**

- ALL NEW PLANTING AREAS SHALL HAVE AN AUTOMATIC IRRIGATION SYSTEM WITH FULL COVERAGE FOR PLANT ESTABLISHMENT.
- ALL PLANT MATERIALS SHALL MEET THE MOST RECENT AMERICAN STANDARD FOR NURSERY STOCK (ANSI Z60.1).
- WHERE GROUND COVER IS INDICATED, IT SHALL BE PLANTED AT THE SPECIFIED SPACING THROUGHOUT THE BED, INCLUDING AREAS UNDERNEATH TREES AND SHRUBS. START FIRST ROW 10" FROM EDGE OF BED.
- SUBMIT COLOR PHOTOS REPRESENTATIVE OF PROPOSED NURSERY STOCK FOR EACH PLANT SPECIES AND VARIETY LISTED IN LANDSCAPE SCHEDULE. FINAL APPROVAL OF PLANT MATERIAL WILL NOT BE PROVIDED UNTIL DELIVERY AND REVIEW ON SITE.
- CONTAINERIZED TREES ARE STRONGLY DISCOURAGED. TREES WITH LARGE CIRCLING ROOTS OR TOO DEEP ROOT SYSTEMS WILL BE REJECTED.
- ALL ROOT PACKAGES MUST BE FREE OF ANY WEEDS.
- TREE STAKING REQUIREMENTS WILL BE DETERMINED BY LANDSCAPE ARCHITECT AT THE TIME OF PLANTING. PROPERLY PROPORTIONED AND PLANTED TREES WITH HEALTHY ROOT PACKAGES MAY NOT REQUIRE STAKING.
- ALL TREE STAKES MUST BE REMOVED BY THE CONTRACTOR BY THE END OF THE FIRST FULL GROWING SEASON.
- AT THE DIRECTION OF THE LANDSCAPE ARCHITECT, PRUNING MAY BE REQUIRED TO REMOVE DAMAGED, CROSSING, MISSHAPEN OR LOW BRANCHING LIMBS. TREES SHOULD NOT REQUIRE SIGNIFICANT PRUNING TO CORRECT HEALTH OR SHAPING CONCERNS.
- A TOTAL OF 4 IN. DEPTH MULCH SHALL BE UNIFORMLY INSTALLED IN ALL NEW TREE, SHRUB, AND GROUND COVER AREAS. SEE SPECIFICATIONS.
- ALL LANDSCAPE AREAS SHALL HAVE ADEQUATE DRAINAGE.
- PROVIDE A 3 FT. DIAMETER MULCH CIRCLE AROUND ALL TREES LOCATIONS IN LAWN AREAS.
- REFER TO CIVIL DEMOLITION DRAWINGS AND SPECIFICATIONS FOR REMOVAL REQUIREMENTS AND PROTECTION FENCING AROUND EXISTING VEGETATION.
- REFER TO TREE PRESERVATION PLANS FOR SCHEDULE OF EXISTING TREES TO BE SAVED OR REMOVED.
- REFER TO CIVIL PLANS FOR NEW UTILITY WORK. CONTRACTOR RESPONSIBLE FOR PATCH AND REPAIR OF ALL EXISTING LANDSCAPE AREAS DISTURBED BY CONSTRUCTION WORK UNDER THIS CONTRACT.
- REFER TO PLANTING AND SEEDING SPECIFICATION FOR ADDITIONAL REQUIREMENTS, INCLUDING 1 YEAR EXTENDED MAINTENANCE REQUIREMENTS.
- PRESERVE EXISTING GRADES AROUND RETAINED TREES AND STANDS WHERE APPLICABLE.
- EXPOSED TREE ROOTS 2" OR GREATER IN DIAMETER ENCOUNTERED AT THE CLOSEST EXTENT OF EXCAVATION SHOULD BE CUT CLEANLY USING A SHARP TOOL TO AVOID TEARING ROOTS BACK TOWARD THE TREE.

ARCHITECT

studio MING STRAZZARA

1430 NE 60th Street  
 Seattle, WA 98115  
 P: 206-322-1732  
 for@studio.com

CONSULTANT

fora

1430 NE 60th Street  
 Seattle, WA 98115  
 P: 206-322-1732  
 for@studio.com

CLIENT/OWNER

PUYALLUP SCHOOL DISTRICT  
 A Tradition of Excellence

TITLE

**PUYALLUP HS NEW PORTABLES 2023**

105 7TH ST SW  
 PUYALLUP, WA  
 98371

STAMP

ISSUED: DATE:

CONDITIONAL USE PERMIT OCT. 11 2023  
 CUP CCH RESPONSE APR. 5 2024  
 BUILDING PERMIT SET MAY 3, 2024  
 PERMIT CCH#1 RESPONSE OCT 8, 2024

LANDSCAPE PLAN

Building Permit #:

CUP #: PLCUP20230109

Owner's Project #:

Architect's Project #: 2023106

Drawn By: CR

Checked By: AR