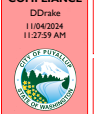


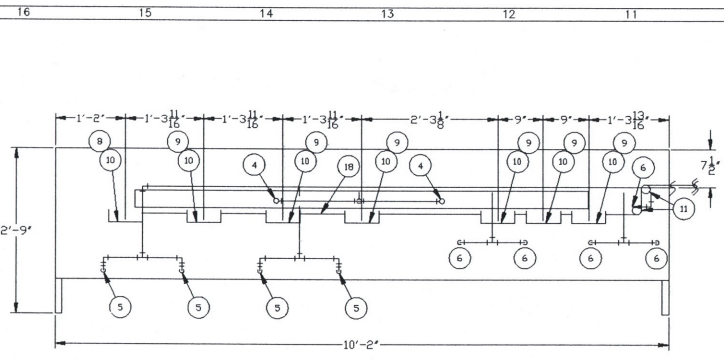
City of Puyallup  
Fire  
REVIEWED  
FOR  
COMPLIANCE  
DDrake  
11/04/2024  
11:27:59 AM



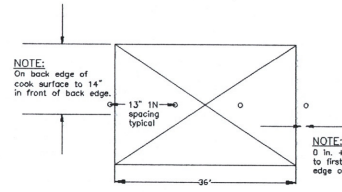
City of Puyallup  
Development & Permitting Services  
ISSUED PERMIT  
Building Planning  
Engineering Public Works  
Fire Traffic

Approval of submitted plans is not an approval of omissions or oversight by this office or noncompliance with any applicable regulations of local government. The contractor is responsible for making sure that the building complies with all applicable building codes and regulations of the local government.

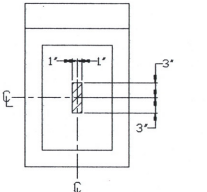
THE APPROVED CONSTRUCTION PLANS AND ALL ENGINEERING MUST BE POSTED ON THE JOB AT ALL INSPECTIONS IN A VISIBLE AND READILY ACCESSIBLE LOCATION.



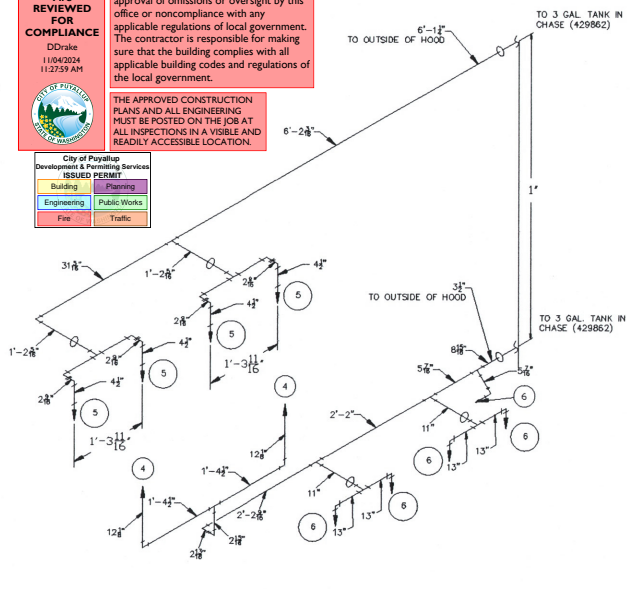
PLAN VIEW



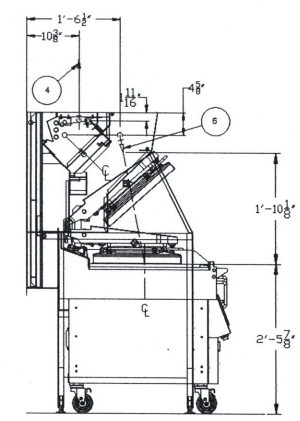
AIMING DETAIL



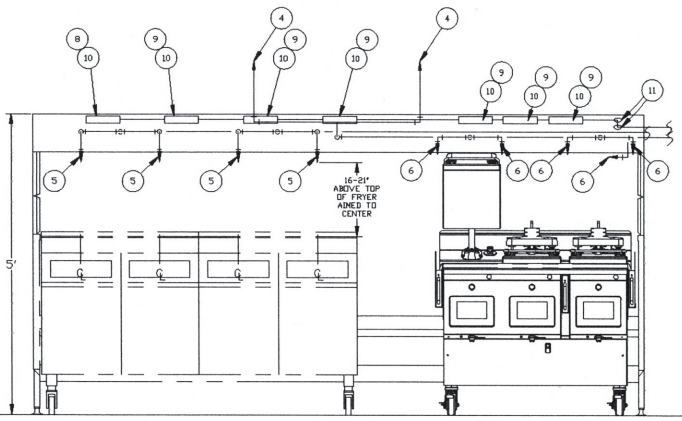
290 NOZZLE POSITIONING  
DETAIL (FRYER)



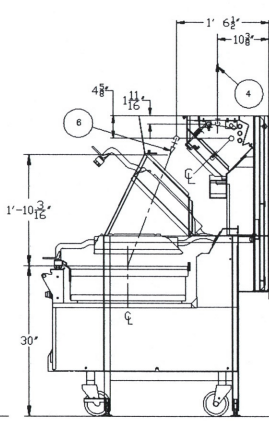
PIPING ISOMETRIC  
N.T.S.



LEFT END  
GARLAND



FRONT ELEVATION



RIGHT END  
TAYLOR

BILL OF MATERIALS				
NO.	ELEC. QTY.	GAS QTY.	PART NO.	DESCRIPTION
1	1		79493	DEM REG. RELEASE/BRACKET ASSEMBLY
2	2		429962	3.0 GAL. TANK
3	2		79372	3.0 GAL. ANSULEX LDV PH
4	2		419337	2V NOZZLE
5	4		439834	290 NOZZLE
6	5		419335	1N NOZZLE
7	1		101-30	CARTRIDGE
8	1		417368	TERMINAL DETECTOR PACKAGE
9	6		417369	SERIES DETECTOR PACKAGE
4	-		439241	FUSIBLE LINK, TYPE SL 165°F
-	4		439243	FUSIBLE LINK, TYPE SL 280°F (HIGH EFFICIENCY <= 100K BTU)
10	3		439244	FUSIBLE LINK, TYPE SL 360°F (GRILL AND DUCT)
-	4		439245	FUSIBLE LINK, TYPE SL 450°F (LDV EFFICIENCY > 100K BTU)
11	4		423250	PULLEY ELBOW ASSEMBLY (FOR 1/2" EMT)
12	1		439360	REMOTE PULL STATION ASSEMBLY
13	1		423279	SNAP ACTION SWITCH - 1PDT
14	-		5560	1" ANSUL MECHANICAL GAS VALVE
15	1		427929	PULLEY TEE
16	2		79007	HOSE ACTUATION

- NOTE: THE FIRST NUMBER IN ANY NOZZLE DESIGNATION INDICATES THE FLOW NUMBER OF THE NOZZLE.
- REMOTE PULL STATION NOTES:
- WHEN PROVIDING INSTALLATION MATERIAL FOR REMOTE PULL STATIONS, USE ONLY 1/2" EMT CONDUIT, COMPRESSION FITTINGS AND P/N 423290 PULLEY ELBOWS.
  - REMOTE PULL STATION TO BE SUPPLIED BY THE AUTHORIZED ANSUL DISTRIBUTOR. 50 FT. OF WIRE ROPE IS INCLUDED WITH THE PULL STATION. WIRE NOT USED CAN BE UTILIZED FOR THE DETECTION LINE AND/OR THE MECHANICAL GAS VALVE, IF USED. IF ADDITIONAL WIRE ROPE IS NEEDED, THE AUTHORIZED ANSUL DISTRIBUTOR WILL SUPPLY (SEE ITEM 18 IN THE BILL OF MATERIALS ABOVE).
  - RIGIDLY FASTEN ALL CONDUIT. WHEN BRACKETING IN THE ATTIC SPACE, REGARD FUTURE SERVICE (BY OTHER TRADES) REQUIREMENTS. TAKE PRECAUTIONS THAT PREVENT THE CONDUIT FROM BEING SUBJECT TO DAMAGE.
  - ROUTE CONDUIT AS DIRECTLY AS POSSIBLE FROM THE REMOTE PULL STATION(S) TO THE LOCATION (IN CHASIS/BOX).
  - CONDUIT IS TO BE ROUTED THROUGH THE EQUIPMENT TO THE AUTOMAN PER THE DETAILS ON THIS SHEET.
  - IF A SECOND PULL STATION IS REQUIRED BY MCDONALDS OR THE AUTHORITY HAVING JURISDICTION, IT IS TO BE SUPPLIED BY THE AUTHORIZED ANSUL DISTRIBUTOR.
- GENERAL NOTES:

- THIS INSTALLATION IS TO BE MADE IN ACCORDANCE WITH THE R-102, UL300 INSTALLATION MANUAL AND IN ACCORDANCE WITH ALL STATE AND LOCAL CODES.
- ALL PIPE LENGTHS TO BE FIELD VERIFIED.
- THESE DRAWINGS MAY BE USED TO SECURE APPROVAL FROM THE AUTHORITY HAVING JURISDICTION.
- IT IS NECESSARY THAT ALL PIPE FITTINGS AND NOZZLES BE WRENCH TIGHTENED AND SECURELY SUPPORTED AND THAT ALL NOZZLES ARE PROPERLY AIMED AS INDICATED IN THE R-102 INSTALLATION MANUAL.
- THE WIRE ROPE FOR THE DETECTOR AND REMOTE PULL STATION(S) AND MECHANICAL GAS VALVE IS TO BE INSTALLED BY AN AUTHORIZED AND FACTORY TRAINED DISTRIBUTOR OR SERVICE REPRESENTATIVE.
- THIS INSTALLATION IS TO BE INSPECTED, PUT INTO OPERATION AND CERTIFIED BY AN AUTHORIZED AND FACTORY TRAINED DISTRIBUTOR OR SERVICE REPRESENTATIVE.
- ELECTRICAL CONTACTS AND WIRING FOR APPLIANCE SHUT OFF TO BE PROVIDED BY THE ELECTRICAL CONTRACTOR.
- PIPING AND CONDUIT HOOD PENETRATIONS TO BE WELDED.
- 165 DEG. F. FUSIBLE LINK TO BE USED WITH ELECTRIC FRYERS ONLY.
- 290 DEG. F. FUSIBLE LINKS TO BE USED ON ALL HIGH EFFICIENCY GAS FRYERS OF 100,000 BTU OR LESS, PER FULL VAT.
- 450 DEG. F. FUSIBLE LINKS TO BE USED ON ALL LOW EFFICIENCY GAS FRYERS OF OVER 100,000 BTU PER FULL VAT.
- THIS DRAWING IS FOR USE WITH A RIGHT HANDED CHASE. FOR LEFT HANDED CHASE USE A MIRROR IMAGE OF THIS DRAWING.
- DIMENSIONS MAY VARY FROM SHOWN .51 INCH
- GRILL DIVIDERS CAN NOT BE UTILIZED WITH THIS PROTECTION
- THIS DRAWING IS UTILIZING A SWIVEL ADAPTOR; HOWEVER, IF THE CENTER LINE CAN BE REACHED, THE SWIVEL ADAPTOR IS NOT REQUIRED.

- PIPING NOTES:
- PIPE SHALL BE 3/8" SCHEDULE 40 BLACK IRON, CHROME PLATED OR STAINLESS STEEL.
  - PIPE ENDS SHALL BE REAMED AND BLOWN CLEAR OF CHIPS AND SCALE BEFORE ASSEMBLY. INSIDE OF PIPE AND FITTINGS MUST BE FREE OF OIL AND DIRT.
  - PIPING DIMENSIONS GIVEN ARE FROM CENTER TO CENTER OF FITTINGS.
  - FINAL NOZZLE LOCATION MAY NOT VARY FROM LOCATION SHOWN.
  - ADD UNIONS AS NEEDED.
  - AUTOMAN/TANK & INTEGRAL COMPONENTS IN MECHANICAL CHASE (NOT SHOWN). ALL PIPE CONNECTIONS MUST USE TEFLEX TAPE ON THE MALE THREADS ONLY. MAKE CERTAIN TAPE DOES NOT COVER LAST THREAD ON PIPE END.
  - MAKE CERTAIN THAT THERE IS A MINIMUM OF 6" (SIX FEET) OF PIPE BETWEEN THE AGENT TANK AND ANY NOZZLE PROTECTING A FRYER.
- CONDUIT NOTES:
- CONDUIT RUNS ARE DIMENSIONED CENTER TO CENTER OF CONDUIT, EXCEPT:
    - A) TO FACE(S) OF DETECTOR BRACKET(S).
    - B) TO TOP SURFACE OF AUTOMAN.
    - C) TO BACK OF MANUAL PULL PAN
    - D) TO SURFACE OF GAS VALVE BOX
  - SHOWS LOCATION FOR PULLEY COVER SCREWS
  - SHOWS BACKSIDE OF PULLEY ELBOW
  - QUANTITY FOR DETECTION LINE IN HOOD ONLY.
- THIS DESIGN IS IN COMPLIANCE WITH UL 300, NFPA 96 & NFPA 17A

ANSUL

DATE	DESCRIPTION	DATE	DESCRIPTION

DATE	DESCRIPTION	DATE	DESCRIPTION

DATE	DESCRIPTION	DATE	DESCRIPTION

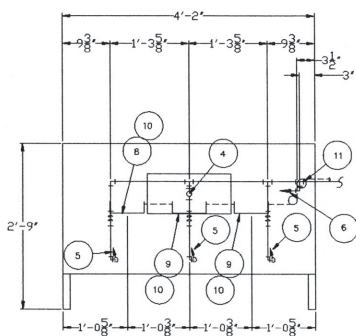
DESIGNED BY:	DATE:	APPROVED BY:	DATE:	SCALE:	PROJECT NUMBER:

REVISIONS:	DATE:	DESCRIPTION:	DATE:	DESCRIPTION:

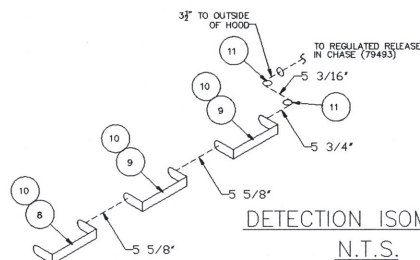
R-102 FIRE SUPPRESSION SYSTEM  
FOR 127" HI HOOD  
GAS OR ELECTRIC FRYERS  
MCDONALD'S PROJECT UH 2018/R-102

DRAWING NUMBER  
891-110  
SHEET IDENTIFICATION  
M-001  
PAGE 1 OF 1

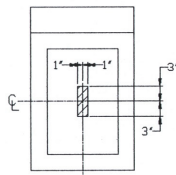
MCDONALD'S PROJECT UH 2018/R-102



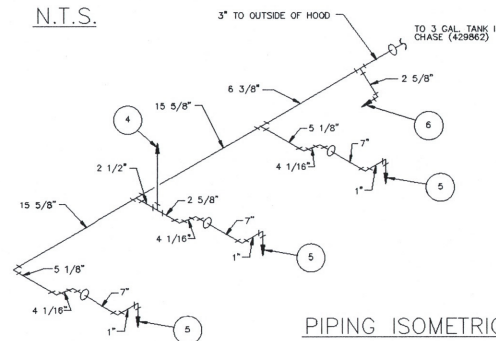
PLAN VIEW



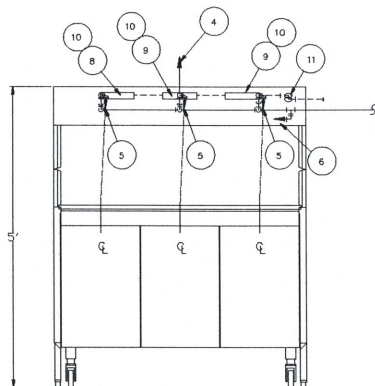
DETECTION ISOMETRIC  
N.T.S.



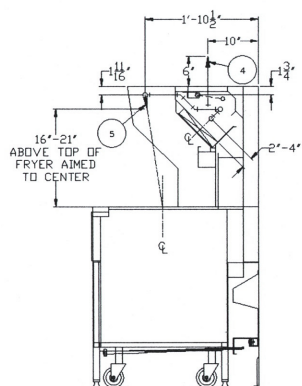
290 NOZZLE POSITIONING  
DETAIL (FRYER)



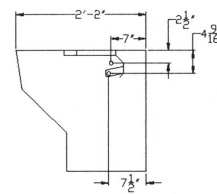
PIPING ISOMETRIC  
N.T.S.



FRONT ELEVATION



RIGHT END



HOOD PENETRATION DETAIL

City of Peayalup Development & Permitting Services	
ISSUED PERMIT	
Building	Plumbing
Engineering	Public Works
Fire	Traffic

ITEM	ELEC QTY	GAS QTY	PART No.	BILL OF MATERIALS DESCRIPTION
** 1	1	1	79499	DEM REG RELEASE/BRACKET ASSEMBLY
** 2	1	1	429862	33 GAL. TANK
** 3	1	1	79376	33 GAL. ANDELEX Low pH
** 4	1	1	419337	2V NOZZLE
** 5	3	3	44335/18964	290 NOZZLE
** 6	1	1	419335	1IN NOZZLE
** 7	1	1	07492/42344/52-25	CARBTRIDGE
** 8	1	1	417368	TERMINAL DETECTOR PACKAGE
** 9	2	2	417639	SERIES DETECTOR PACKAGE
** 10	3	3	415739	FUSIBLE LINK, TYPE K, 180F
** 11	2	2	423250	PULLEY ELBOW ASSEMBLY (FOR 1/2" EMT)
** 12	1	1	54011	REMOTE PULL STATION ASSEMBLY
** 13	1	1	423879	SNAP ACTION SWITCH - RPDT
** 14	1	1	55601	1" ANSUL MECHANICAL GAS VALVE
** 15	1	1	427569	PULLEY TEE
** 16	2	2	79007	HOSE ACTIVATION

NOTE: THE FIRST NUMBER IN ANY NOZZLE DESIGNATION INDICATES THE FLOW NUMBER OF THE NOZZLE.

OPTIONAL REMOTE PULL STATION NOTES:

THE FOLLOWING SPECIFICATIONS ARE FOR ADDITIONAL REMOTE PULL STATIONS WHERE CODES APPLY:

1. WHEN PROVIDING INSTALLATION MATERIAL FOR EXTRA REMOTE PULL STATIONS, USE ONLY 1/2" EMT CONDUIT, COMPRESSION FITTINGS AND P/N 423250 PULLEY ELBOWS.
2. ALL EXISTING PULL STATIONS WILL REMAIN INSTALLED AND CONNECTED ON CHASE.
3. RIGIDLY FASTEN ALL CONDUIT. WHEN BRACKETING IN THE ATIC SPACE, REGARD FUTURE SERVICE (BY OTHER TRADES) REQUIREMENTS. TAKE PRECAUTIONS THAT PREVENT THE CONDUIT FROM BEING SUBJECT TO DAMAGE.
4. ROUTE CONDUIT AS DIRECTLY AS POSSIBLE FROM THE OPTIONAL REMOTE PULL STATION TO THE LOCATION (IN CHASE/WAY) NOTED ON DRAWING R02-536-110 FOR EACH STATION.
5. CONDUIT IS TO BE ROUTED THROUGH THE EQUIPMENT TO THE AUTOMAN PER THE DETAILS ON THIS SHEET AND DRAWINGS R02-536-110.

GENERAL NOTES:

1. THIS INSTALLATION IS TO BE MADE IN ACCORDANCE WITH THE R-102, UL300 INSTALLATION MANUAL AND IN ACCORDANCE WITH ALL STATE AND LOCAL CODES.
2. ALL PIPE LENGTHS TO BE FIELD VERIFIED.
3. THESE DRAWINGS MAY BE USED TO SECURE APPROVAL FROM THE AUTHORITY HAVING JURISDICTION.
4. IT IS NECESSARY THAT ALL PIPE FITTINGS AND NOZZLES BE WRENCH TIGHTENED AND SECURELY SUPPORTED AND THAT ALL NOZZLES ARE PROPERLY AIMED AS INDICATED IN THE R-102 INSTALLATION MANUAL.
5. THE WIRE ROPE FOR THE DETECTOR AND REMOTE PULL STATION AND MECHANICAL GAS VALVE IS TO BE INSTALLED BY AN AUTHORIZED AND FACTORY TRAINED DISTRIBUTOR OR SERVICE REPRESENTATIVE.
6. THIS INSTALLATION IS TO BE INSPECTED, PUT INTO OPERATION AND CERTIFIED BY AN AUTHORIZED AND FACTORY TRAINED DISTRIBUTOR OR SERVICE REPRESENTATIVE.
7. ELECTRICAL CONTACTS AND WIRING FOR APPLIANCE SHUT OFF TO BE PROVIDED BY THE ELECTRICAL CONTRACTOR.
8. PIPING AND CONDUIT HOOD PENETRATIONS TO BE WELDED.
9. 165 DEG. F. FUSIBLE LINK TO BE USED WITH ELECTRIC FRYERS ONLY.
10. 280 DEG. F. FUSIBLE LINKS TO BE USED ON ALL HIGH EFFICIENCY GAS FRYERS OF 100,000 BTU OR LESS, PER FULL VAT.
11. 450 DEG. F. FUSIBLE LINKS TO BE USED ON ALL LOW EFFICIENCY GAS FRYERS OF OVER 100,000 BTU PER FULL VAT.
12. THIS DRAWING IS FOR USE WITH A RIGHT HANDED CHASE. FOR LEFT HANDED CHASE USE A MIRRORRED IMAGE OF THIS DRAWING.
13. DIMENSIONS MAY VARY FROM SHOWN ±1 INCH.

PIPING NOTES:

1. PIPE SHALL BE 3/8" SCHEDULE 40 BLACK IRON, CHROME PLATED OR STAINLESS STEEL.
2. PIPE ENDS SHALL BE REAMED AND BLOWN CLEAR OF CHIPS AND SCALE BEFORE ASSEMBLY. INSIDE OF PIPE AND FITTINGS MUST BE FREE OF OIL AND DIRT.
3. PIPING DIMENSIONS GIVEN ARE FROM CENTER TO CENTER OF FITTINGS.
4. FINAL NOZZLE LOCATION MAY NOT VARY FROM LOCATION SHOWN.
5. ADD UNIONS AS NEEDED.
6. ANSUL AUTOMAN / TANK LOCATED IN CHASE.
7. ALL PIPE CONNECTIONS MUST USE TEFLON TAPE ON THE MALE THREADS ONLY. MAKE CERTAIN TAPE DOES NOT COVER LAST THREAD ON PIPE END.
8. MAKE CERTAIN THAT THERE IS A MINIMUM OF 6" (SIX FEET) OF PIPE BETWEEN THE AGENT TANK AND ANY NOZZLE PROTECTING A FRYER.

CONDUIT NOTES:

1. CONDUIT RUNS ARE DIMENSIONED CENTER TO CENTER OF CONDUIT, EXCEPT:
  - A) TO FACE(S) OF DETECTOR BRACKET(S)
  - B) TO TOP SURFACE OF AUTOMAN
  - C) TO BACK OF MANUAL PULL PAN
  - D) TO SURFACE OF GAS VALVE BODY
2. ○ SHOWS LOCATION FOR PULLEY COVER SCREWS
- SHOWS BACKSIDE OF PULLEY ELBOW
- \*\*\* 3. QUANTITY FOR DETECTION LINE IN HOOD ONLY.

THIS DESIGN IS IN COMPLIANCE WITH UL 300, NFPA 96 & NFPA 17A

McDONALD'S. PROJECT UH 2008/R-102

CHN 2/23/08 CHN Changed fryer protection to 290 nozzles ADW 07/11/08 ADW REMOVED HEIGHT FROM NOZZLE POSITIONING ADW 03/10/09 ADW CHANGED MODEL FROM 2002 TO 2008	CHN 2/23/08 ADW 07/11/08 ADW 03/10/09	REVISION DATE 6/12/03 JPB	SCALE 1"=12" JPB	DRAWING NUMBER R02-519-112 1 OF 1	REV. 3
--	---	------------------------------------	------------------------	---	-----------

THIS DRAWING AND THE DATA CONTAINED HEREIN ARE THE PROPERTY OF ANSUL. FIRE PROTECTION AND SHALL BE KEPT CONFIDENTIAL TO THE PROPERTY OF ANSUL. FIRE PROTECTION. NO PART OF THIS DRAWING OR THE DATA CONTAINED HEREIN SHALL BE REPRODUCED OR TRANSMITTED IN ANY FORM OR BY ANY MEANS, ELECTRONIC OR MECHANICAL, INCLUDING PHOTOCOPYING, RECORDING, OR BY ANY INFORMATION STORAGE AND RETRIEVAL SYSTEM, WITHOUT THE WRITTEN AUTHORIZATION OF THE COMPANY.

R-102 FIRE SUPPRESSION SYSTEM  
3 VAT FRY STATION R.H.  
50" UH 2008 HEDD  
GAS OR ELECTRIC - FRANKIE  
McDONALD'S CORPORATION  
DAK BROOK IL.

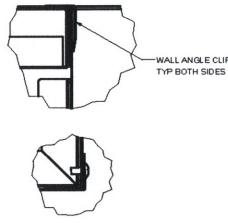
ANSUL ANSUL FIRE PROTECTION  
MARRIETTE, IN 46143-2542



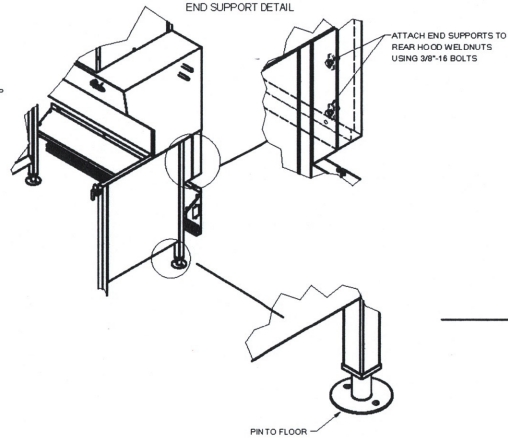
REV.	DESCRIPTION	REVISION HISTORY	MODIFIED	DATE	ECO.
0	Update of high temperature gasket model to #3937H		FAF_394	6/22/2017	PSWR039376

- INSTALLATION GUIDE LINES**
1. MOUNT ELECTRICAL RACEWAY 6-14" A.F.F. FROM BOTTOM OF UNISTRUT.
  2. MOUNT SCREWS THRU UNISTRUT.
  3. SLIDE ALL LOCKING ROD ASSEMBLIES INTO UNISTRUT.
  4. MOUNT UTILITY CHASE TO WALL.
  5. MOUNT POWER BOX ON BOTTOM OF CHASE, @ 6" A.F.F.
  6. WIRE ELECTRICAL RACEWAY TO POWER BOX.
  7. MOUNT GAS MANIFOLD THRU LOCKING ROD BRACKET.
  8. RUN ELECTRICAL CONDUIT AND GAS PIPE (IF REQUIRED) DOWN UTILITY CHASE.
  9. CONNECT ELECTRICAL WIRE FROM ELEC. PANEL TO TERMINAL STRIP IN POWER BOX.
  10. CONNECT GAS MANIFOLD TO GAS SUPPLY LINE (IF REQUIRED).
  11. MOUNT OFFSET WALL CLIP ON WALL @ 5" A.F.F.
  12. ATTACH END SUPPORT ASSEMBLIES TO HOOD.
  13. HANG HOOD ON OFFSET WALL CLIP AND ADJUST BASE HOOD SUPPORT LEGS TO LEVEL HOOD, HOLDING TOP OF HOOD 2 60" A.F.F.
  14. PIN FLANGED FEET TO FLOOR.
  15. ATTACH TRANSITIONS DUCT TO HOOD.
  16. MAKE DUCT WORK CONNECTION AS REQUIRED PER LOCAL CODE.
  17. CONNECT FIRE SUPPRESSION SYSTEM IN HOOD TO SYSTEM IN UTILITY CHASE.
  18. MOUNT FASCIA KIT BACK PANEL TO WALL AND ASSEMBLE.
  19. ATTACH FLUE BOX STAND OFF TO REAR OF GRILL.
  20. ATTACH GREASE CAN SLIDES TO SIDE OF GRILL.
  21. SLIDE GRILL UNDER HOOD AND SECURE WITH LOCKING RODS.

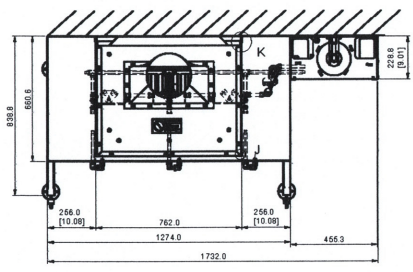
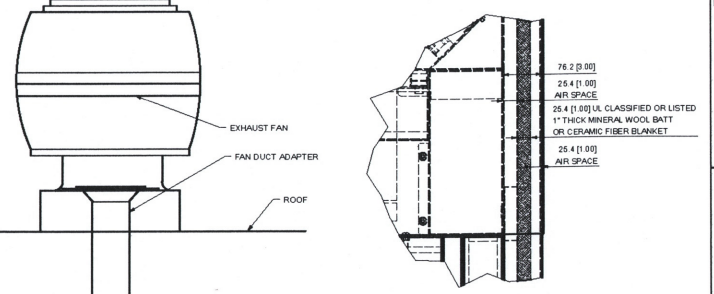
FASCIA ASSEMBLY DETAIL



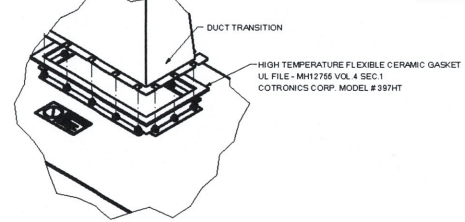
END SUPPORT DETAIL



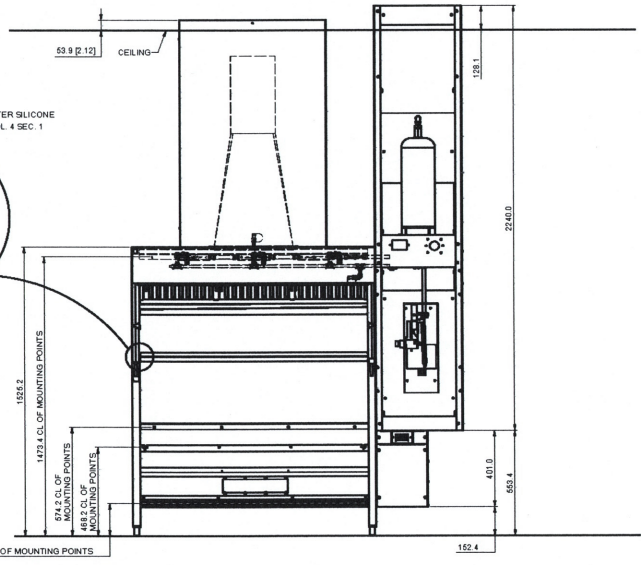
HOOD REAR PROFILE DETAIL



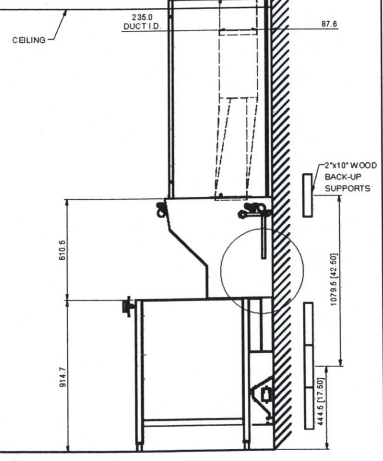
DUCT TRANSITION DETAIL



HI-TEMP ACCESS DOOR COMPONENT HARDWARE # ACC-10X8 LOCATED PER LOCAL CODES



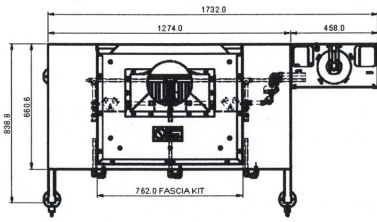
GASKET HI TEMP PAWIL  
TEMP RATING 305-400°F, 80 DUROMETER SILICONE  
SIMOLEX #4750, UL FILE - MH12756 VOL. 4 SEC. 1



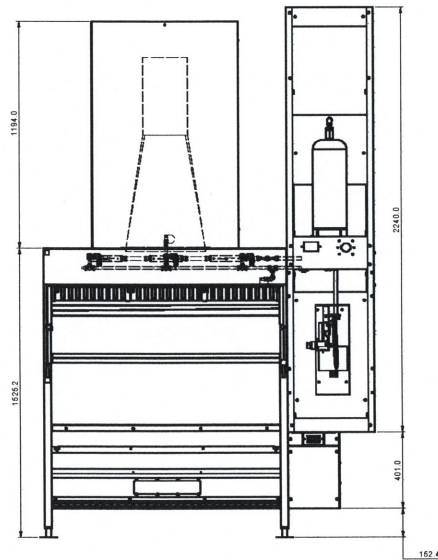
Installation/Permit Drawing 50" Hood 3-VAT

Global B 19005142				

SHEET 1 OF 2



DUCT DIA 9-1/4" I.D. 3 VAT  
 625 CFM ELEC  
 700 CFM GAS  
 CFM/FT HOOD 173 CFM  
 DUCT VELOCITY 1630 FPM  
 FILTER VELOCITY 255 FPM  
 HOOD STATIC PRESSURE (GAS) 0.37



**McDONALD'S CORPORATION**  
 OAK BROOK, ILLINOIS 60521

EQUIP. I.D. **EXHAUST HOOD: UH SERIES**

MANUF. I.D. **FP#3** SERIAL NUMBER

MANUF EQUIP. I.D. **50" UH** MANUF. DATE

**MINIMUM DESIGN EXHAUST AIR FLOW**

LENGTH OF HOOD	WITH FRYER AND/OR 2-PLATEN GRILL	WITH FRYER AND/OR 3-PLATEN GRILL
25" (660.4mm)	128 (12)	128 (12)
34-1/2" (876.3mm)	143 (13.3)	143 (13.3)
35 - 1/2" (899 - 27.10mm)	156 (15.5)	156 (15.5)
133-3/4" (3397mm)	132 (12.3)	166 (15.5)

FOR USE OVER COMMERCIAL GAS OR ELECTRIC COOKING EQUIPMENT UP TO 400°F (204°C)  
 - TOP PLATEN OF CLAMHELL GRILL MAY HAVE MAX COOKING SURFACE OF 425"² (27.6m²)  
 - 22" (558.8mm) MAXIMUM CLEARANCE FROM COOK SURFACE TO FRONT LOWER EDGE OF HOOD  
 - 16" (406.4mm) MINIMUM CLEARANCE FROM COOK SURFACE TO FRONT LOWER EDGE OF HOOD  
 - 2 1/4" (57.1mm) MINIMUM HOOD OVERHANG FROM EDGE OF COOKING SURFACE  
 - 16 1/4" (412.8mm) MAXIMUM HOOD SETBACK FROM EDGE OF COOKING SURFACE  
 - THESE HOODS ARE LISTED FOR DIRECT REAR MOUNTING ON A COMBUSTIBLE SURFACE  
 - WHEN A GRILL IS OPERATED UNDER THE HOOD AN EXTENSION SIDE PANEL (REMOVABLE OR INTEGRAL) MUST BE MOUNTED AT WHICH EVER END(S) OF HOOD IS ADJACENT TO THE GRILL(S)  
 - ONLY THE REMOVABLE SIDESHIRTS WILL BE INDIVIDUALLY MARKED AS FOLLOWS:  
 UH SERIES GRILL/RH OR LH  
 - THESE HOOD MUST BE PER LOCAL CODES

MANUFACTURER'S NAME:

DALLAS, TX HKD  
 LAGUNA PHILIPPINES FAB  
 SAN LUIS POTOSI, MEXICO FRM  
 FAYETTEVILLE, TN FPW

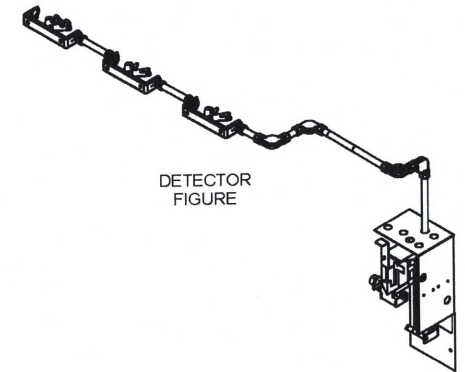
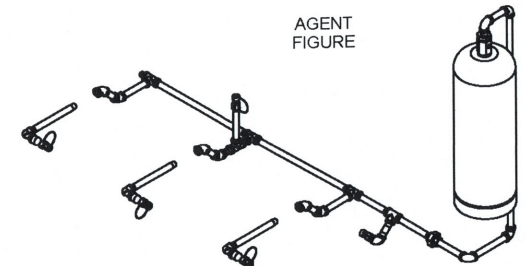
CA #6535  
 EXHAUST HOODS WITHOUT EXHAUST DAMPERS

19005083 A 4001094

City of Pryallup  
 Development & Permitting Services  
 ISSUED PERMIT

Building Planning  
 Engineering Public Works  
 Fire Traffic

- NOTES:
- 16 GA S/S MATERIAL USED FOR HOOD EXTERIOR
  - 16 GA GALVANEAL MATERIAL USED FOR HOOD BACK
  - FILTER BAFFLE:  
APPROVED FILTERS TO UL STANDARD 1046
  - EXHAUST HOOD:  
ETL FILE 100105372SAT-001
  - UTILITY CHASE & RACEWAY:  
UL FILE E163328 VOL.1, SEC.3
  - HOOD COMPLIES WITH NSF STANDARD 2
  - ELECTRICAL CONNECTIONS BY LOCAL ELECTRICIANS.  
GAS PIPING BY LOCAL PLUMBER  
ANSUL CONNECTIONS AND STARTUP BY CERTIFIED ANSUL REP.
  8. HIGH TEMP CERAMIC GASKET MODEL 397HT



Installation/Permit Drawing 50" Hood 3-VAT

PRINTECH Fireplace Maintenance Systems 2400 S. 17th St. Tulsa, OK 74106	DATE 2 APR 2017 1:02 PM DRAWN BY GJL	REVISION	DESCRIPTION	SCALE AS NOTED	PROJECT Global	NO. / REV. NUMBER B / 19005142
--	---	----------	-------------	-------------------	-------------------	-----------------------------------

SHEET 2 OF 2