

ITEM	SYM	QTY	MODEL NUMBER	DESCRIPTION	MANUFACTURER	► MOUNTING
1	FACR	1	5208	SILENT KNIGHT 10-ZONE CONVENTIONAL FACP	SILENT KNIGHT	EXISTING
2		1	5217	SILENT KNIGHT 10-ZONE EXPANDER	SILENT KNIGHT	EXISTING
3		1	5280	DISPLAY DRIVER	SILENT KNIGHT	EXISTING
4		2		12V 26.0 AH BATTERIES	SILENT KNIGHT	EXISTING
5						
6				NEW EQUIPMENT		
7	2	12	2W-63	DETECTOR PHOTO SMOKE, 2 WIRE CONVENTIONAL	SYSTEM SENSOR	4" SQ., 2.5" DEEP S.G MUDRING
8	1	12	5603	DETECTOR HEAT SMOKE, ADDRESSABLE	SYSTEM SENSOR	4" SQ., 2.5" DEEP S.G MUDRING
9	F	6	MS-7	PULL STATION, DUAL ACTION, ADDRESSABLE	SILENT KNIGHT	4" SQ., 2.5" DEEP S.G MUDRING
10	BPS	1	HPF-P56	6 AMP NAC BOOSTER POWER SUPPLY	SILENT KNIGHT	SURFACE, TOP @ 6'-0"
11		6	SLA 12-8F	12V-8AH BATTERY	DURACELL	FOR NEW BPS PANEL
12	34	1	P2RK	RED WALL MOUNT HORN/STROBE WEATHERPROOF	SYSTEM SENSOR	MOUNT ON BACKBOX PROVIDED
13	34	6	P2RLED	RED WALL MOUNT HORN/STROBE	SYSTEM SENSOR	4" SQ., 2.5" DEEP S.G MUDRING
14						
15						
16						
17						
18						
19						
20						
21						
22						

MOUNT MANUAL PULL STATIONS SO ACTUATION LEVER IS AT +48" ABOVE FINISHED FLOOR.

MOUNT HORN/STROBES AND STROBES WITH BOTTOM OF STROBE AT +80" ABOVE FINISHED FLOOR.

ENTIRE LENS MUST BE BETWEEN 80" & 96" AND NO LESS THAN 6" BELOW CLO.

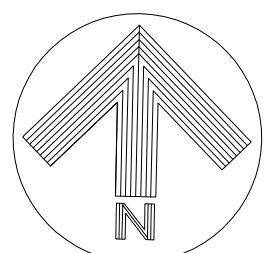
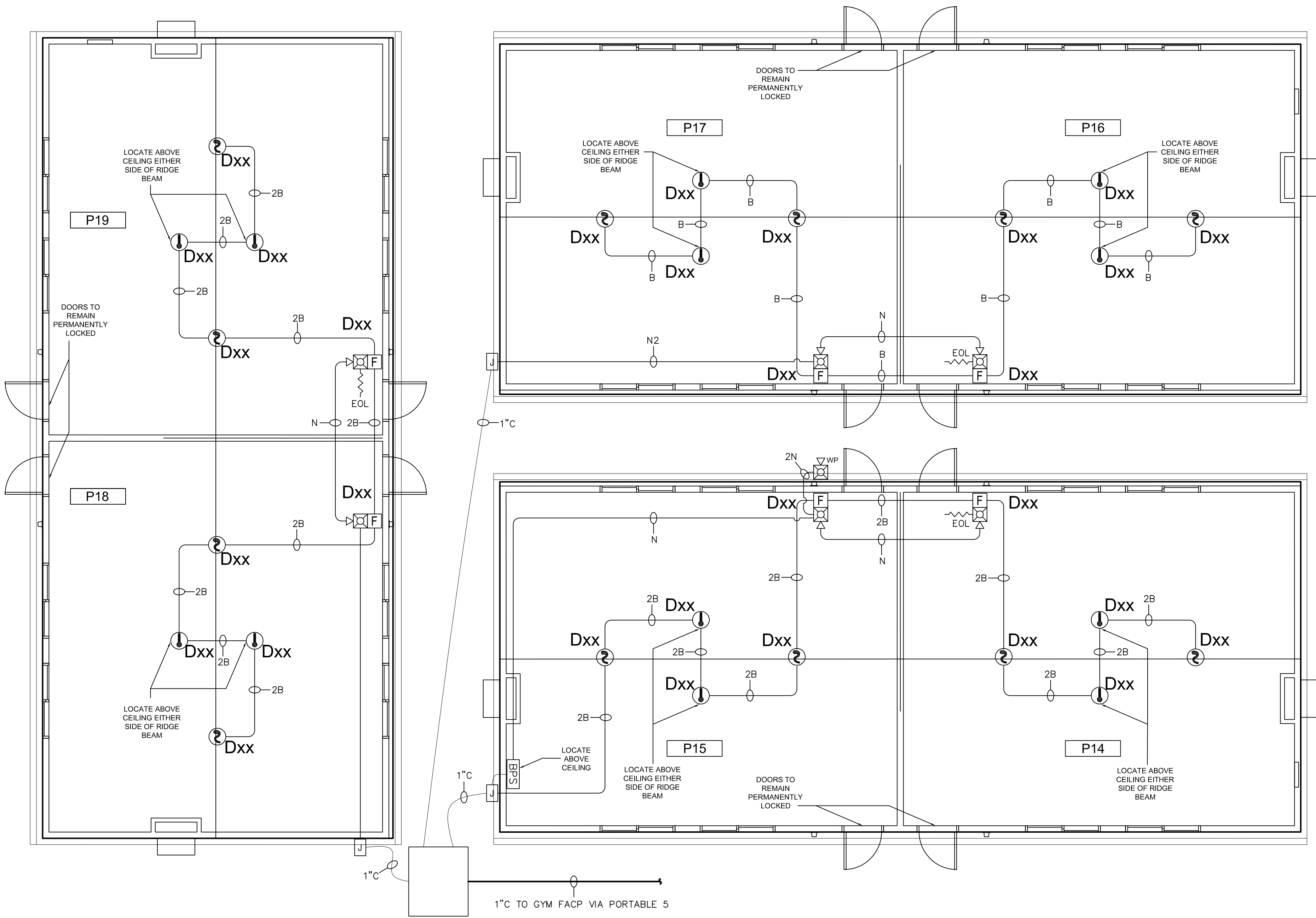
MOUNT ALL PANELS WITH TOP AT 6'-0" AFF. SET STROBE CANDELA OUTPUT AS SHOWN ON PLANS.

SET HORNS TO MEDIUM SETTING UNLESS NOTED. LABEL EOL DEVICES WERE APPLICABLE.

► FOR ADDITIONAL MOUNTING OPTIONS SEE DATA SHEETS, PROVIDED.

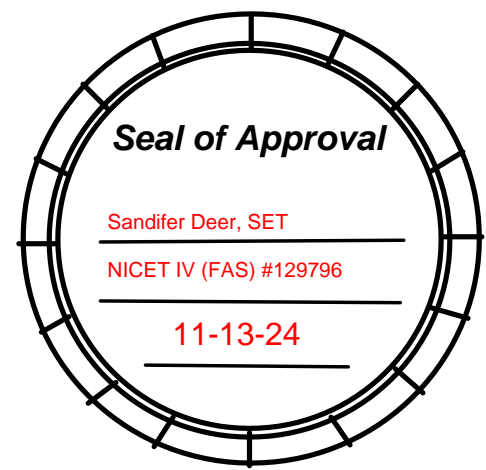
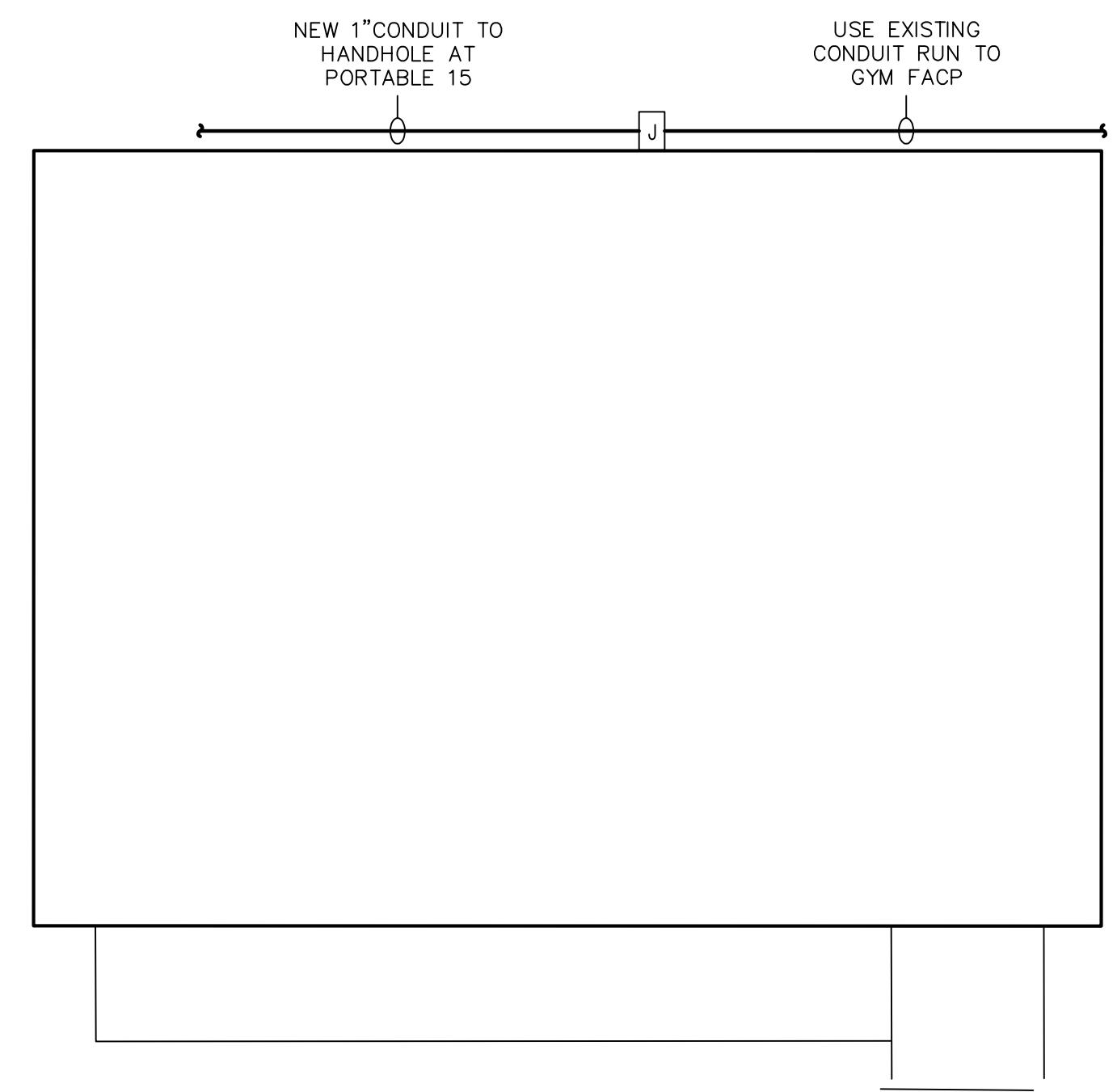
[illegible]

CABLE/CONDUCTOR LIST						
	CIRCUIT TYPE	CABLE TYPE	NO.	GAUGE	COLOR	NOTES
1	ADDRESSABLE CIRCUIT	FPLP (AQ226-U.G.)	A1,2	12/2	RED JACKET	NO STRIPE
2	NOTIFICATION APPLIANCE CIRCUIT	FPLP (AQ226-U.G.)	N1-4	14/2	RED JACKET	VARIOUS STRIPES
3	CONVENTIONAL CIRCUIT	FPLP	B	12/2	RED JACKET	WHITE STRIPE
4	24VDC POWER FOR AUX CONTROL FUNCTIONS	FPLP	C	12/2	RED JACKET	PURPLE STRIPE
5	DOOR HOLD POWER	FPLP	P1,2	16/2	RED JACKET	YELLOW STRIPE
6	ANNUNCIATOR CIRCUIT	FPLP	J	16/2	RED JACKET	BLACK STRIPE
7		THHN		14/1	GREEN	
8	BOOSTER POWER SUPPLY TRIGGER CIRCUIT	FPLP	T	14/2	RED JACKET	GRAY STRIPE
9						
10						



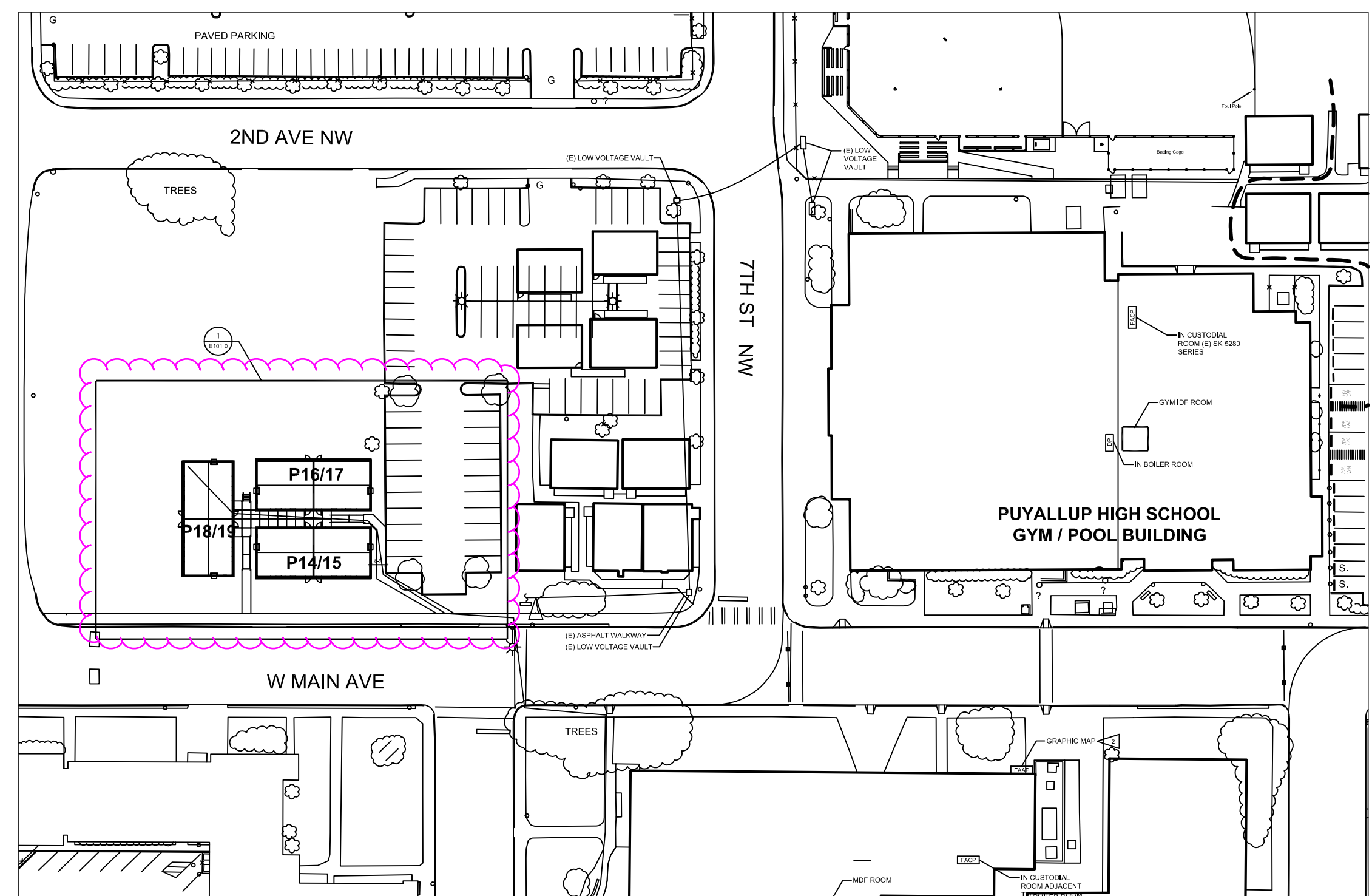
PORTABLES FLOOR PLAN 1
SCALE: N.T.S.

DESIGNED BY:
SANDIFER DEER
NICET IV #129796



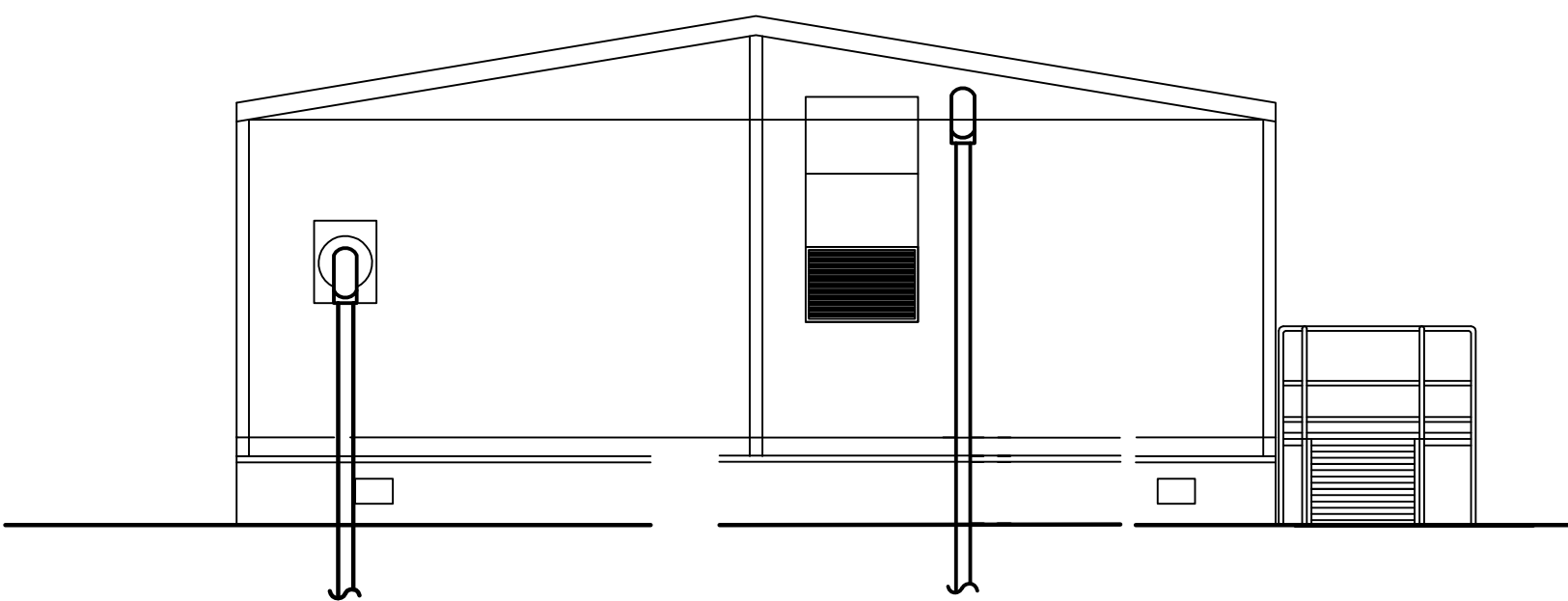
City of Puyallup
Development & Permitting Services
ISSUED PERMIT

Building	Planning
Engineering	Public Works
Fire	Traffic

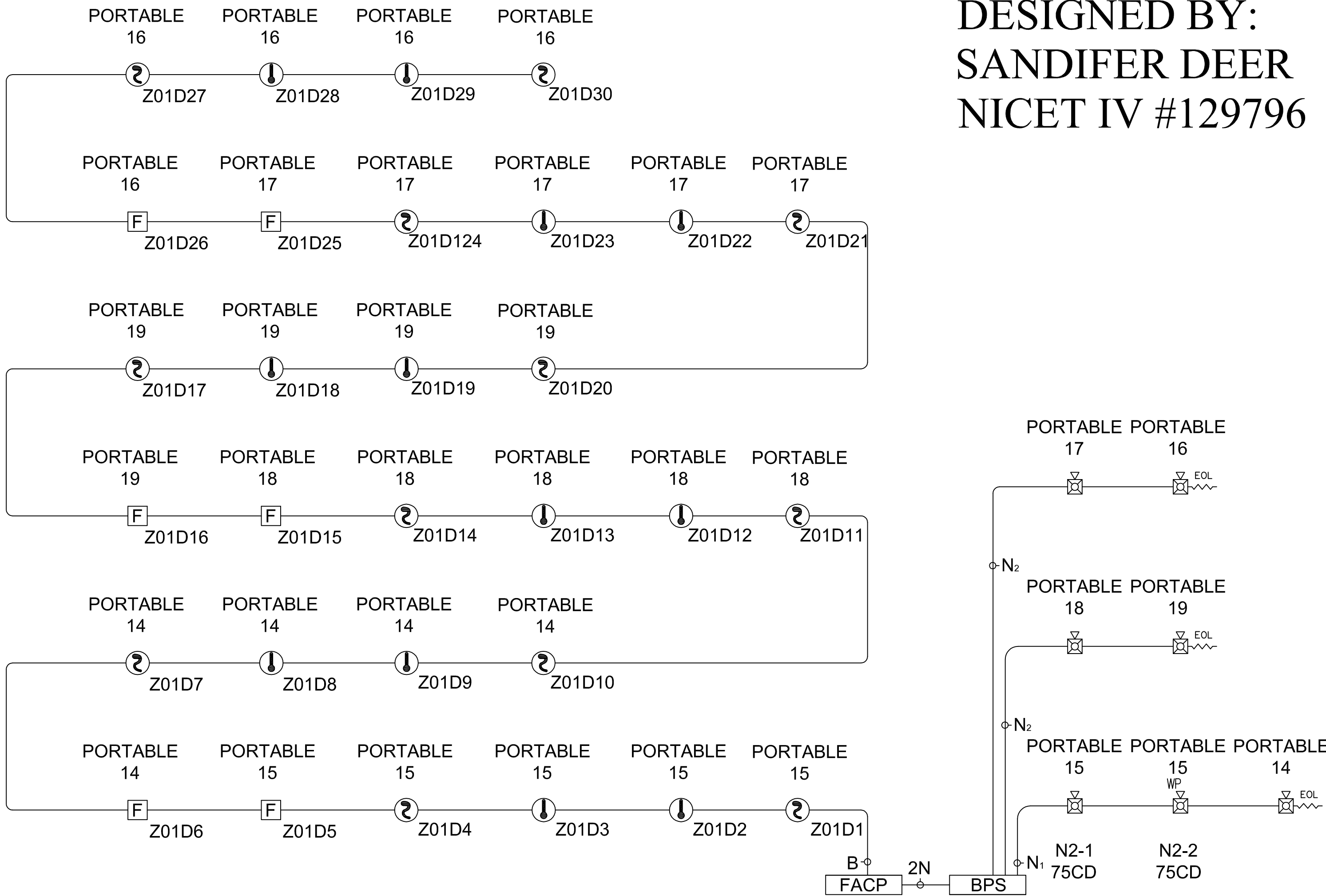


SITE MAP 1
SCALE: N.T.S.

 E-SQUARED SYSTEMS, LLC PO BOX 731227 PUYALLUP, WA 98373 PH: 253.284.3707 FAX: 253.284.3714	1430C FA-02
	1430C FA-02
	1430C FA-02
	1430C FA-02

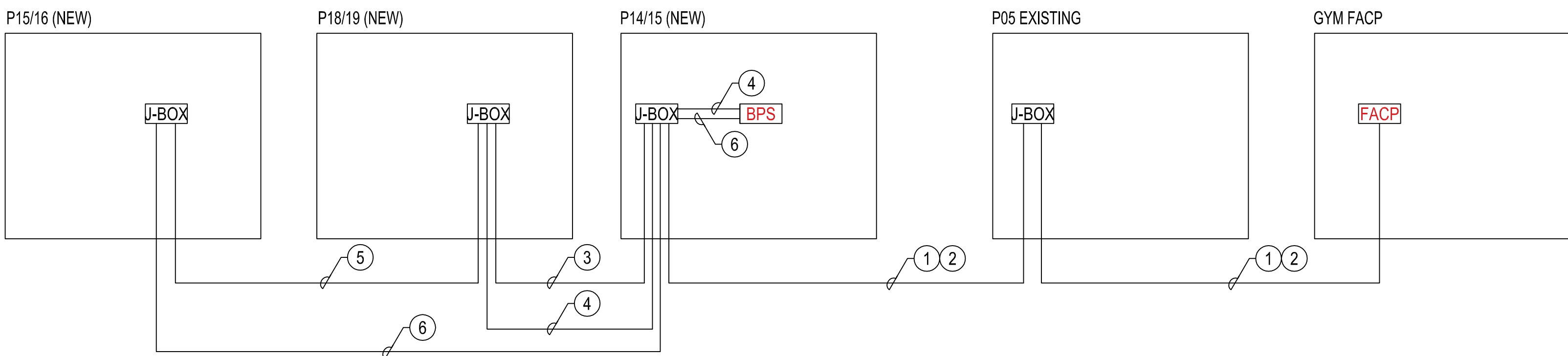


POWER & SYSTEMS CONDUIT PLAN 1
SCALE: 1/4"

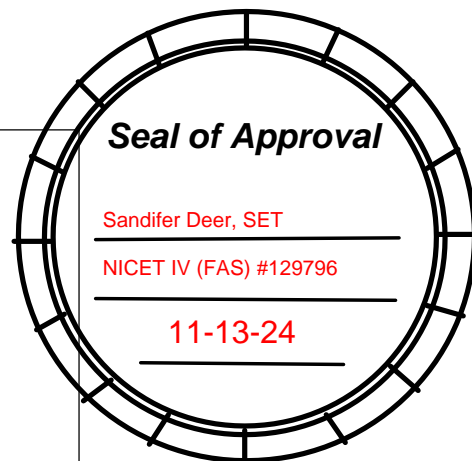


BACKBONE RISER CALBE PLAN 2
SCALE: 1/4"

- ① FACP TO PORTABLE 15 FEED
ROUTE 1EA WESTPENN AQ227 (12/2) FROM FACP (ZONE 1) TO PORTABLE 15 FOR INITIATION CKT.
- ② ROUTE WESTPENN AQ246 (14/4) FROM FACP BPS TO PORTABLE 15 BPS FOR BPS INPUT TRIGGER (ALTERNATIVE TO ROUTE TO PORTABLE 5 NAC CKT. MUST BE 4 CONDUCTOR).
- ③ PORTABLE 18/19 FEED
ROUTE WESTPENN AQ227 (12/2) FROM PORTABLE 14/15 TO PORTABLE 18 INITIATION ZONE 1.
- ④ ROUTE WESTPENN AQ226 (14/2) FROM PORTABLE 14/15 BPS TO PORTABLE 18/19 FOR NAC CKT. NOTE DIFFERENT WESTPENN CABLE.
- ⑤ PORTABLE 16/17 FEED
ROUTE WESTPENN AQ227 (12/2) FROM PORTABLE 18/19 TO PORTABLE 16/17 FOR INITIATION ZONE 1 ED OF LINE.
- ⑥ ROUTE WESTPENN AQ226 (14/2) FROM PORTABLE 14/15 BPS TO PORTABLE 16/17 FOR NAC CKT. NOTE THIS FEED RUNS FROM BPS TO PORTABLE 16/17.



BACKBONE RISER CALBE PLAN 3
SCALE: 1/4"



City of Puyallup
Development & Permitting Services
ISSUED PERMIT


Building	Planning
Engineering	Public Works
Fire	Traffic

E² Systems
E-SQUARED SYSTEMS, LLC
PO BOX 731227 PUYALLUP, WA 98373
PH: 253.284.3707 FAX: 253.284.3714

REV	DATE	ISSUE	COMMENTS
0	11-6-24	ISSUED FOR APPROVAL	

SCALE: 1/8" = 1'-0"
FIRE/LIFE SAFETY SYSTEM
RISER DIAGRAM AND BUILDING DETAIL

PUYALLUP HIGH SCHOOL -PORTABLES (GYM)
FIRE ALARM SYSTEM
711 W MAIN ST
PUYALLUP, WA 98374

A circular stamp with a double-lined border. Inside the circle, the text "Seal of Approval" is written in a bold, italicized serif font. Below this, there are three horizontal lines. The first line contains the text "Sandifer Deer, SET". The second line contains the text "NICET IV (FAS) #129796". The third line contains the date "11-13-24".

E² Systems
EAGLE ELECTRONIC

E-SQUARED SYSTEMS, LLC
PO BOX 731227 PUYALLUP, WA 98373
PH: 253.284.3707 FAX: 253.284.3714

[illegible]

SCALE: 1/8"=1'-0"

PANEL DIAGRAMS

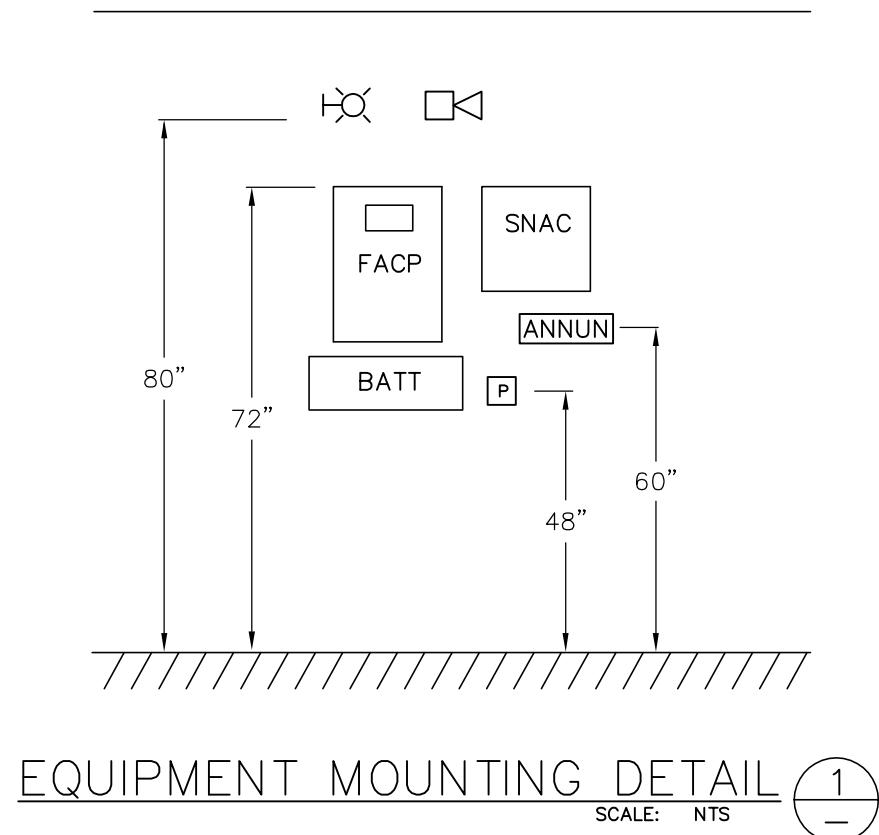
**PUYALLUP HIGH SCHOOL –PORTABLES (GYM)
FIRE ALARM SYSTEM**

711 W MAIN ST
PILYALLIP WA 98374

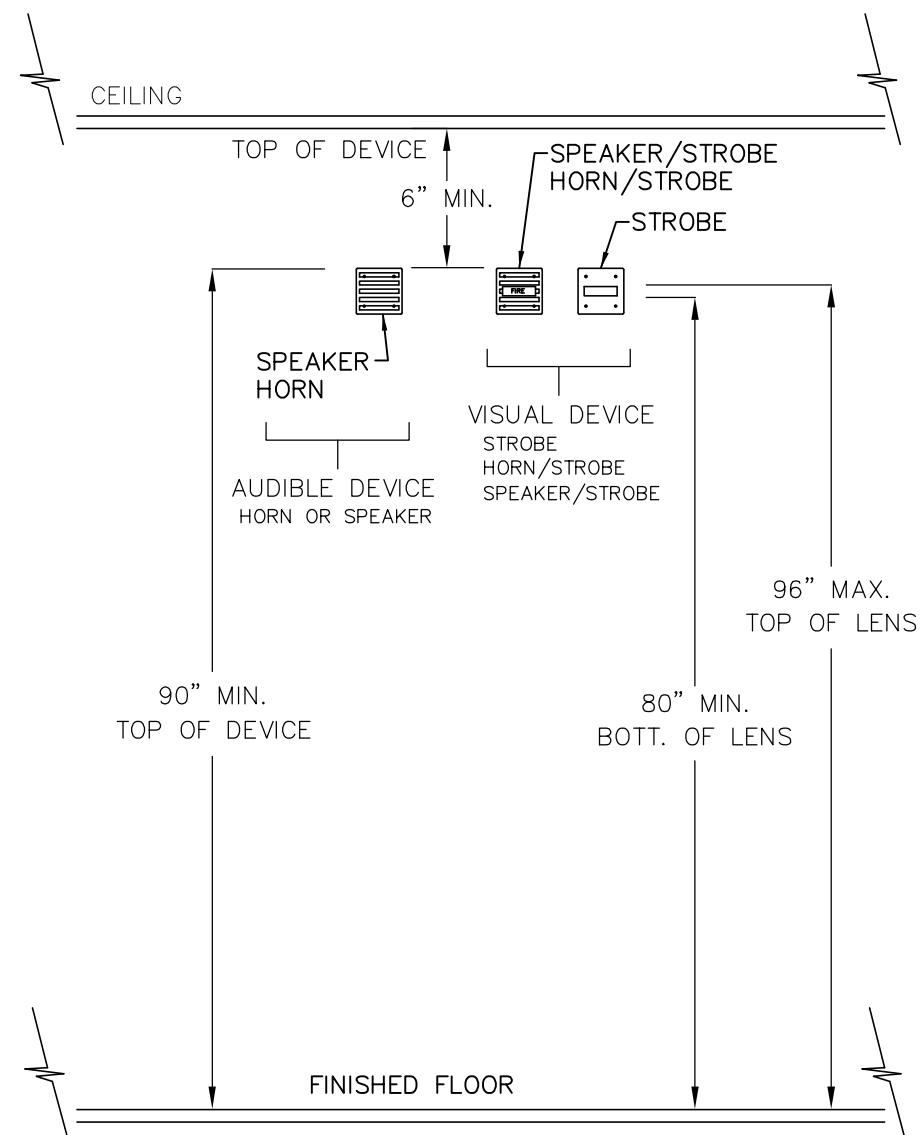
JOB # 1210C

FA-04

DETAILS SHOWN ARE TYPICAL AND ALL DETAILS MAY NOT APPLY TO ALL JOBS. REF. LAYOUT DRAWINGS& B.O.M.



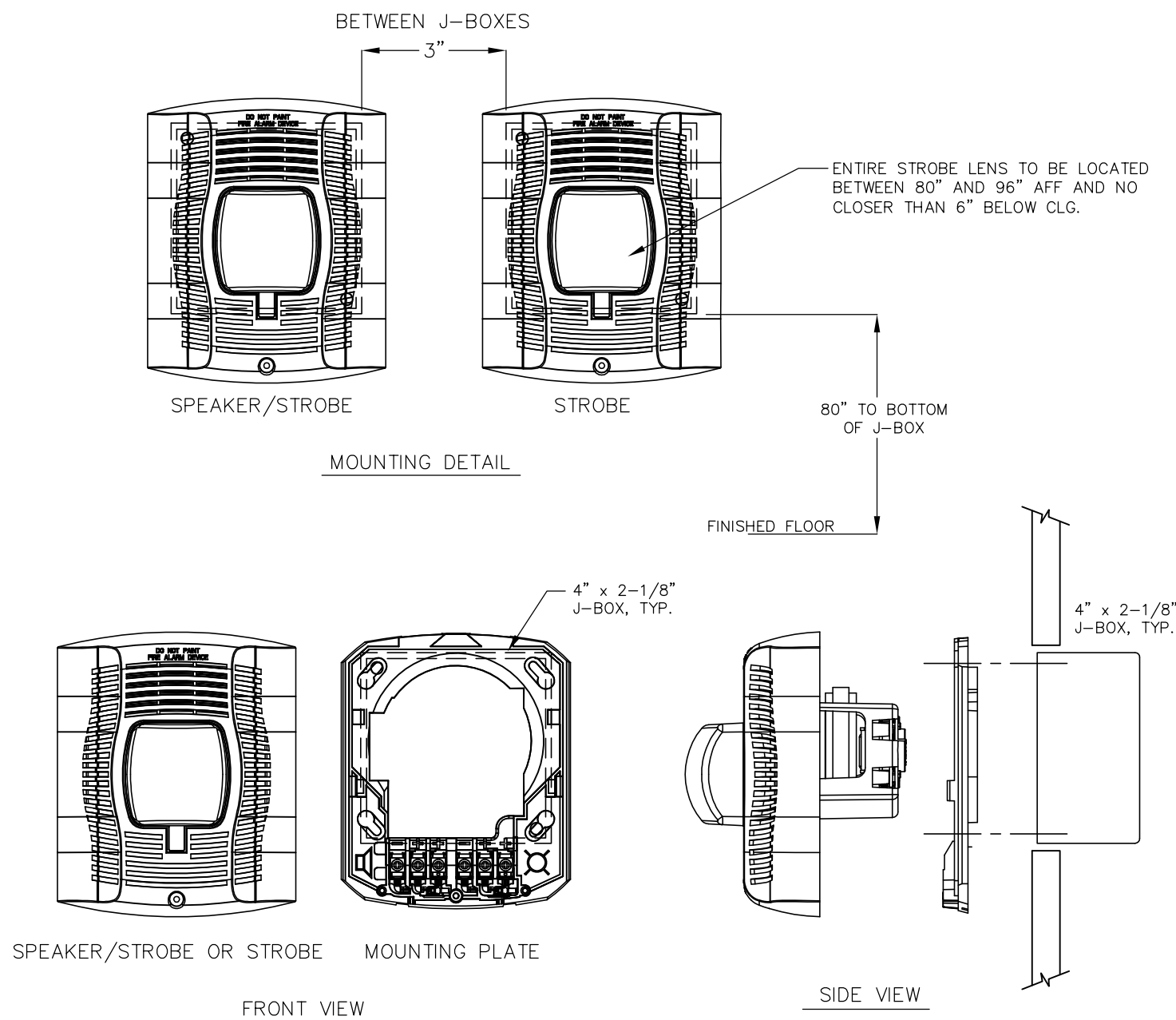
NOTES:
1. DETAIL NOT INTENDED TO SHOW SPATIAL RELATIONSHIP OF DEVICES. REFERENCE FLOOR PLANS FOR ACTUAL LOCATIONS.



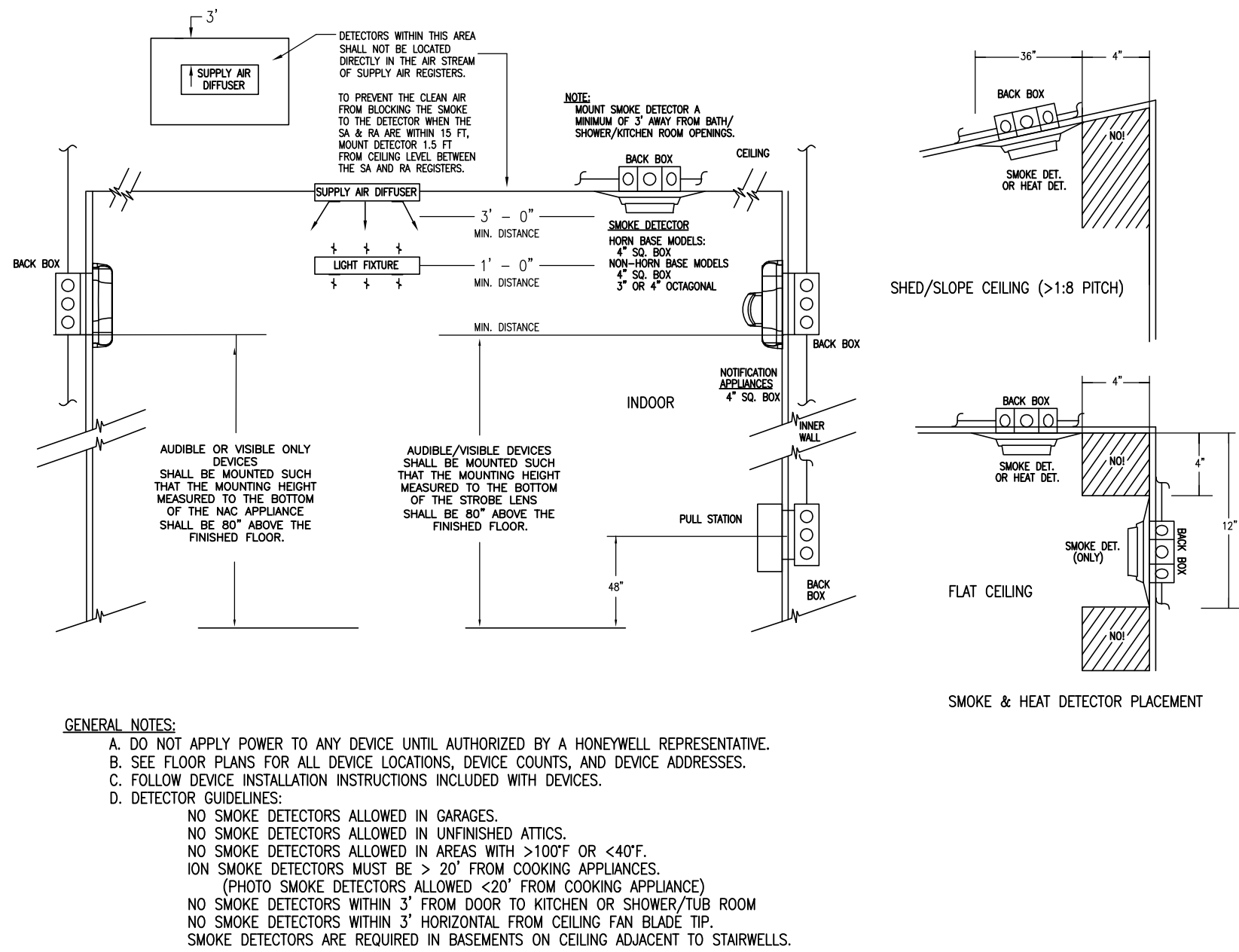
- INSTALLATION NOTES:
1. MOUNT VISUAL AND COMBINATION AUDIBLE/VISUAL APPLIANCES SUCH THAT THE ENTIRE LENS IS NOT LESS THAN 80" AND NOT GREATER THAN 96" A.F.F.
 2. MOUNT AUDIBLE APPLIANCES SUCH THAT THE TOP OF THE APPLIANCE IS AT A MINIMUM HEIGHT OF 90" A.F.F. AND BELOW THE FINISHED CEILING AT A MINIMUM HEIGHT 6".
 3. IN AREAS WHERE MORE THEN TWO VISIBLE NOTIFICATION APPLIANCES ARE IN ANY FIELD OF VIEW, THEY SHALL FLASH IN SYNCHRONIZATION.
 4. IN CORRIDOR APPLICATIONS:
A. VISIBLE NOTIFICATION APPLIANCES SHALL BE LOCATED WITHIN 15' FROM THE END OF A CORRIDOR WITH SEPARATION NOT GREATER THAN 100' BETWEEN APPLIANCES.
B. WALL-MOUNTED VISIBLE NOTIFICATION APPLIANCES SHALL BE PERMITTED IN EITHER THE END WALL OR THE SIDE WALL OF THE CORRIDOR.
C. IF THERE IS AN INTERRUPTION OF THE CONCENTRATED VIEWING PATH, SUCH AS A FIRE DOOR, AN ELEVATION CHANGE, OR ANY OTHER OBSTRUCTION, THE AREA SHALL BE TREATED AS A SEPARATE CORRIDOR.
 5. SLEEPING AREAS:
A. FOR ROOMS WITH A LINEAR DIMENSION GREATER THAN 16', THE VISIBLE NOTIFICATION APPLIANCES SHALL BE LOCATED WITHIN 16' OF THE PILLOW.
B. IF THE DISTANCE FORM THE TOP OF THE STROBE LENS IS EQUAL TO OR GREATER THEN 24" FROM THE CEILING THEN THE STROBE SHALL BE 110cd. IF THE DISTANCE FROM THE TOP OF THE STROBE LENS IS LESS THEN 24" TO THE CEILING THE STROBE SHALL BE 177cd.

MOUNTING HEIGHTS FOR WALL MOUNTED NOTIFICATION APPLIANCES
SCALE: NTS

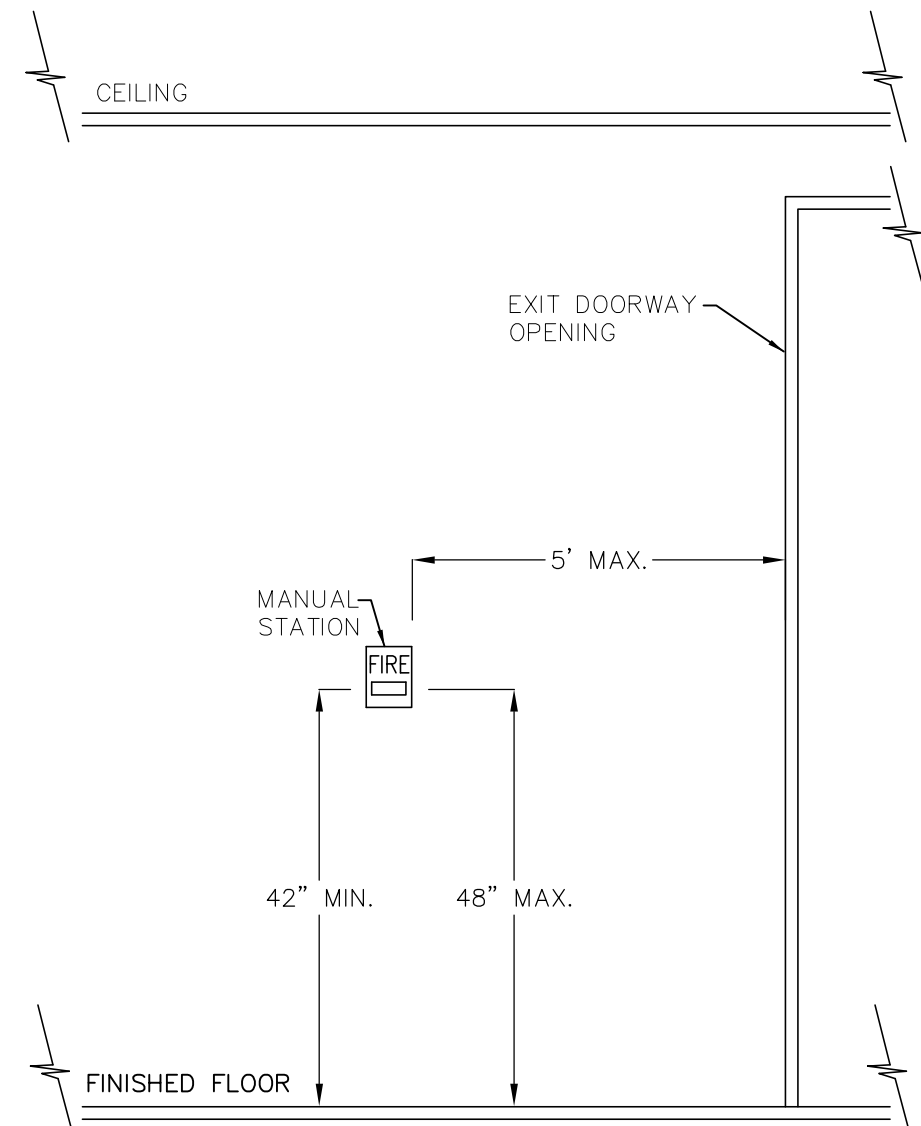
SET STROBE CANDELA OUTPUT AS SHOWN ON PLANS.
SET HORNS TO MEDIUM UNLESS NOTED OTHERWISE.



TYPICAL WALL MOUNT DETAIL 2
SCALE: NTS

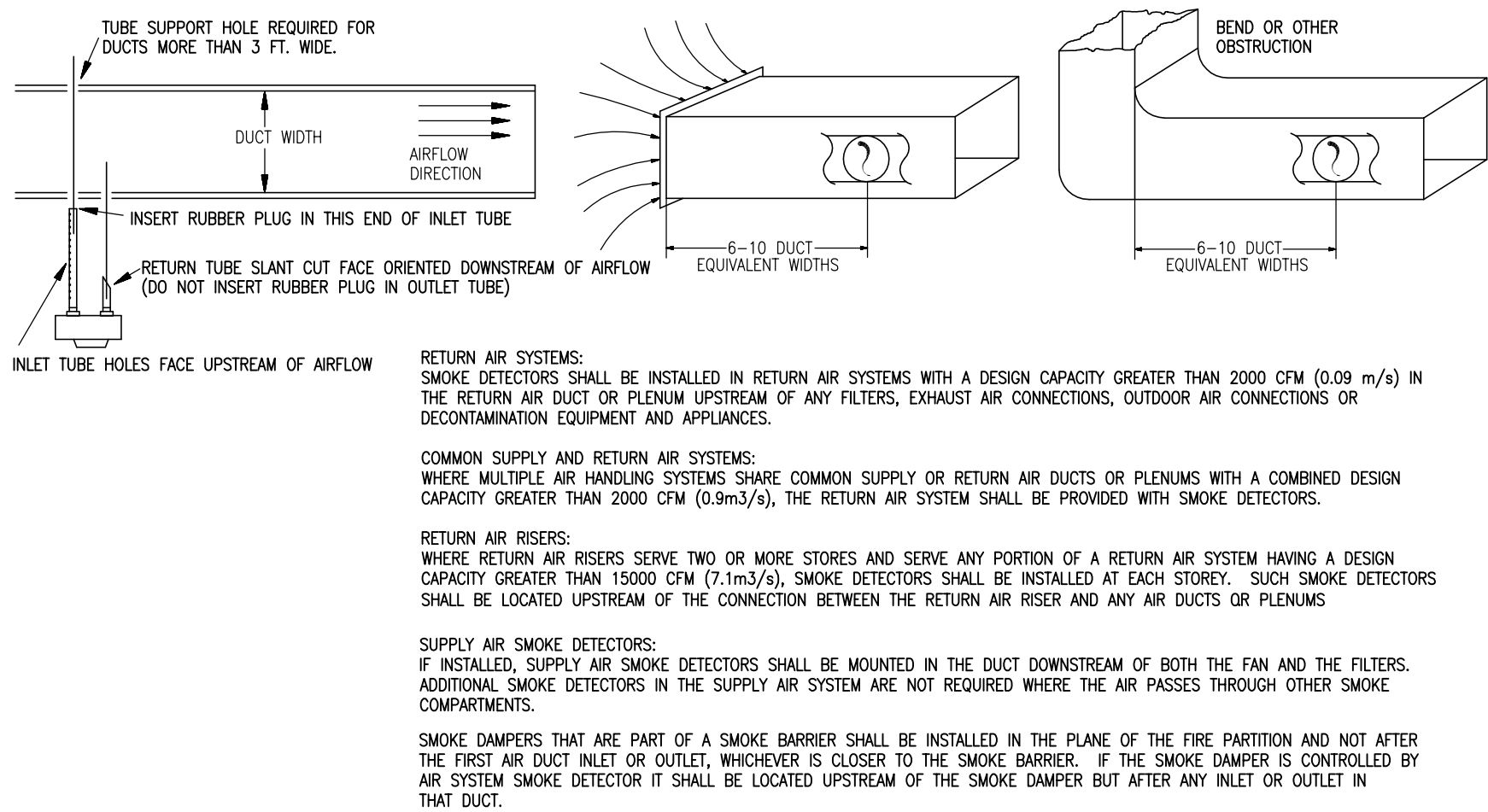


ADDITIONAL DEVICE MOUNTING DETAILS 5
SCALE: NTS



- INSTALLATION NOTES:
1. THE OPERABLE PART OF EACH MANUAL FIRE ALARM BOX SHALL BE NOT LESS THEN 42" AND NOT GREATER THAN 48" A.F.F.
 2. MANUAL FIRE ALARM BOXES SHALL BE LOCATED WITHIN 5' OF THE EXIT DOORWAY OPENING ON EACH FLOOR.

MANUAL STATION MOUNTING DETAILS 3
SCALE: NTS



- RETURN AIR SYSTEMS:
SMOKE DETECTORS SHALL BE INSTALLED IN RETURN AIR SYSTEMS WITH A DESIGN CAPACITY GREATER THAN 2000 CFM (0.09 m/s) IN THE RETURN AIR DUCT OR PLENUM UPSTREAM OF ANY FILTERS, EXHAUST AIR CONNECTIONS, OUTDOOR AIR CONNECTIONS OR DECONTAMINATION EQUIPMENT AND APPLIANCES.
- COMMON SUPPLY AND RETURN AIR SYSTEMS:
WHERE MULTIPLE AIR HANDLING SYSTEMS SHARE COMMON SUPPLY OR RETURN AIR DUCTS OR PLENUMS WITH A COMBINED DESIGN CAPACITY GREATER THAN 2000 CFM (0.09m/s), THE RETURN AIR SYSTEM SHALL BE PROVIDED WITH SMOKE DETECTORS.
- RETURN AIR RISERS:
WHERE RETURN AIR RISERS SERVE TWO OR MORE STORES AND SERVE ANY PORTION OF A RETURN AIR SYSTEM HAVING A DESIGN CAPACITY GREATER THAN 15000 CFM (7.1m/s), SMOKE DETECTORS SHALL BE INSTALLED AT EACH STOREY. SUCH SMOKE DETECTORS SHALL BE LOCATED UPSTREAM OF THE CONNECTION BETWEEN THE RETURN AIR RISER AND ANY AIR DUCTS OR PLENUMS.
- SUPPLY AIR SMOKE DETECTORS:
IF INSTALLED, SUPPLY AIR SMOKE DETECTORS SHALL BE MOUNTED IN THE DUCT DOWNSTREAM OF BOTH THE FAN AND THE FILTERS. ADDITIONAL SMOKE DETECTORS IN THE SUPPLY AIR SYSTEM ARE NOT REQUIRED WHERE THE AIR PASSES THROUGH OTHER SMOKE COMPARTMENTS.
- SMOKE DAMPERS THAT ARE PART OF A SMOKE BARRIER SHALL BE INSTALLED IN THE PLANE OF THE FIRE PARTITION AND NOT AFTER THE FIRST AIR DUCT INLET OR OUTLET, WHICHEVER IS CLOSER TO THE SMOKE BARRIER. IF THE SMOKE DAMPER IS CONTROLLED BY AIR SYSTEM SMOKE DETECTOR IT SHALL BE LOCATED UPSTREAM OF THE SMOKE DAMPER BUT AFTER ANY INLET OR OUTLET IN THAT DUCT.
- WHERE IN-DUCT SMOKE DETECTORS ARE INSTALLED IN CONCEALED LOCATIONS MORE THAN 10ft ABOVE THE FINISHED FLOOR, OR IN ARRANGEMENTS WHERE THE DETECTOR'S ALARM LIGHT IS NOT READILY VISIBLE TO RESPONDING PERSONNEL, THE DETECTOR SHALL BE PROVIDED WITH REMOTE ALARM INDICATORS TO BE INSTALLED IN A READILY ACCESSIBLE LOCATION AND SHALL BE CLEARLY LABELED TO INDICATE BOTH THEIR FUNCTION AND THE AIR HANDLING UNIT(S) ASSOCIATED WITH EACH DETECTOR. (EXCEPTION: WHERE THE SPECIFIC DETECTOR IN ALARM IS INDICATED AT THE CONTROL UNIT)

DUCT DETECTOR MOUNTING DETAILS 6
SCALE: NTS

DESIGNED BY:
SANDIFER DEER
NICET IV #129796

