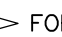
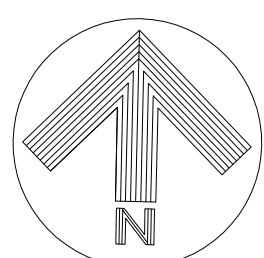
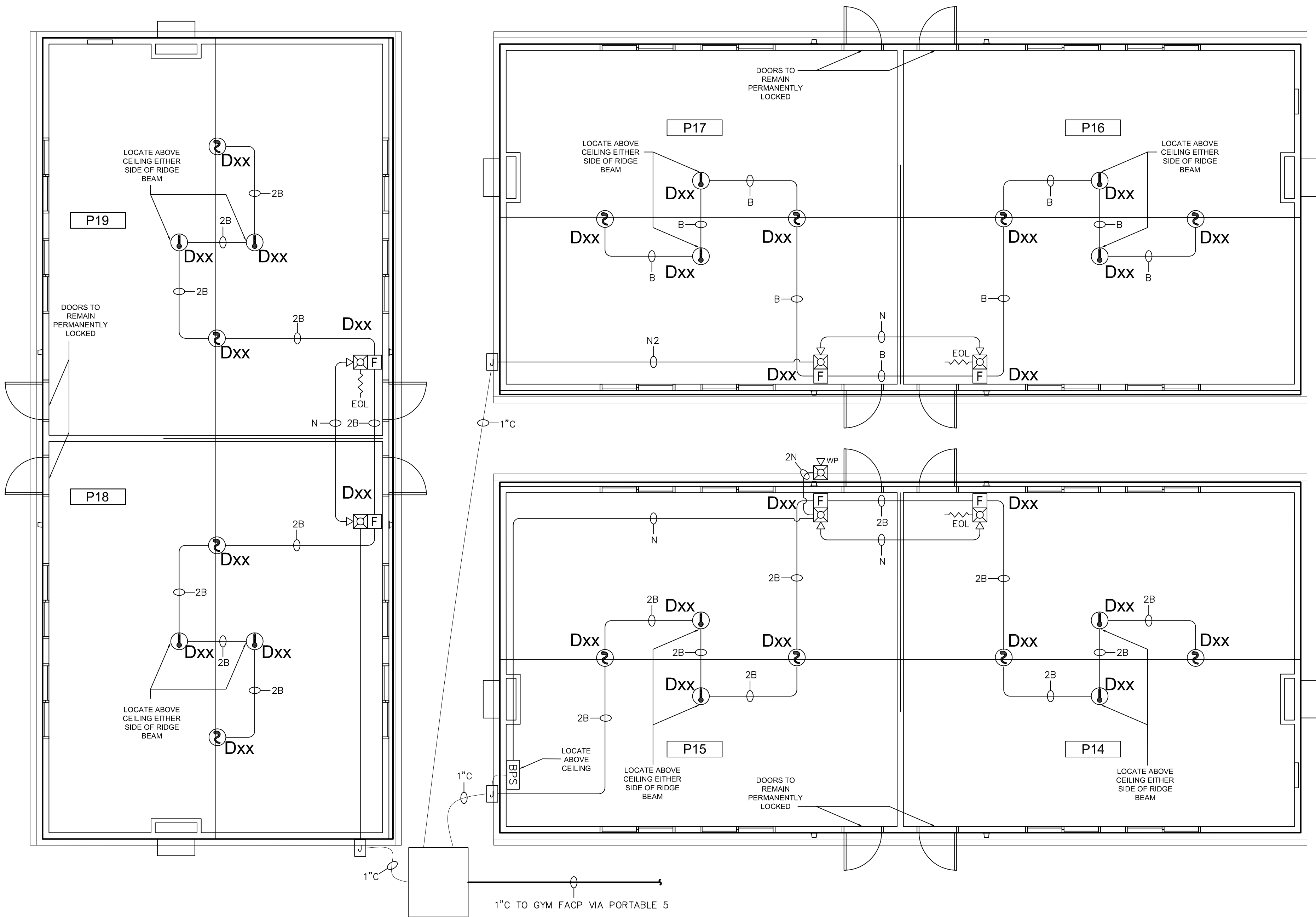


ITEM	SYM	QTY	MODEL NUMBER	DESCRIPTION	MANUFACTURER	MOUNTING
1	FACP	1	5208	SILENT KNIGHT 10-ZONE CONVENTIONAL FACP	SILENT KNIGHT	EXISTING
2		1	5217	SILENT KNIGHT 10-ZONE EXPANDER	SILENT KNIGHT	EXISTING
3		1	5280	DISPLAY DRIVER	SILENT KNIGHT	EXISTING
4		2		12V 26.0 AH BATTERIES	SILENT KNIGHT	EXISTING
5						
6				NEW EQUIPMENT		
7	②	12	2W-8	DETECTOR PHOTO SMOKE, 2 WIRE CONVENTIONAL	SYSTEM SENSOR	4" SQ., 2.5" DEEP S.G MUDRING
8	①	12	5603	DETECTOR HEAT SMOKE, ADDRESSABLE	SYSTEM SENSOR	4" SQ., 2.5" DEEP S.G MUDRING
9	□	6	MS-7	PULL STATION, DUAL ACTION, ADDRESSABLE	SILENT KNIGHT	4" SQ., 2.5" DEEP S.G MUDRING
10	BPS	1	HPF-PS6	6 AMP NAC BOOSTER POWER SUPPLY	SILENT KNIGHT	SURFACE, TOP @ 6'-0"
11		6	SLA 12-8F	12V-8AH BATTERY	DURACELL	FOR NEW BPS PANEL
12	W	1	P2RK	RED WALL MOUNT HORN-STROBE WEATHERPROOF	SYSTEM SENSOR	MOUNT ON BACKBOX PROVIDED
13	W	6	P2RLD	RED WALL MOUNT HORN-STROBE	SYSTEM SENSOR	4" SQ., 2.5" DEEP S.G MUDRING
14						
15						
16						
17						
18						
19						
20						
21						
22						
MOUNT MANUAL PULL STATIONS SO ACTUATION LEVER IS AT +48" ABOVE FINISHED FLOOR. MOUNT HORN-STROBES AND STROBES WITH BOTTOM OF STROBE AT +80" ABOVE FINISHED FLOOR. ENTIRE LENS MUST BE BETWEEN 80" & 96" AND NO LESS THAN 6" BELOW CLO. MOUNT ALL PANELS WITH TOP AT 6'-0" AFF. SET STROBE CANDELA OUTPUT AS SHOWN ON PLANS. SET HORNS TO MEDIUM SETTING UNLESS NOTED. LABEL EOL DEVICES WERE APPLICABLE.						 FOR ADDITIONAL MOUNTING OPTIONS SEE DATA SHEETS, PROVIDED.

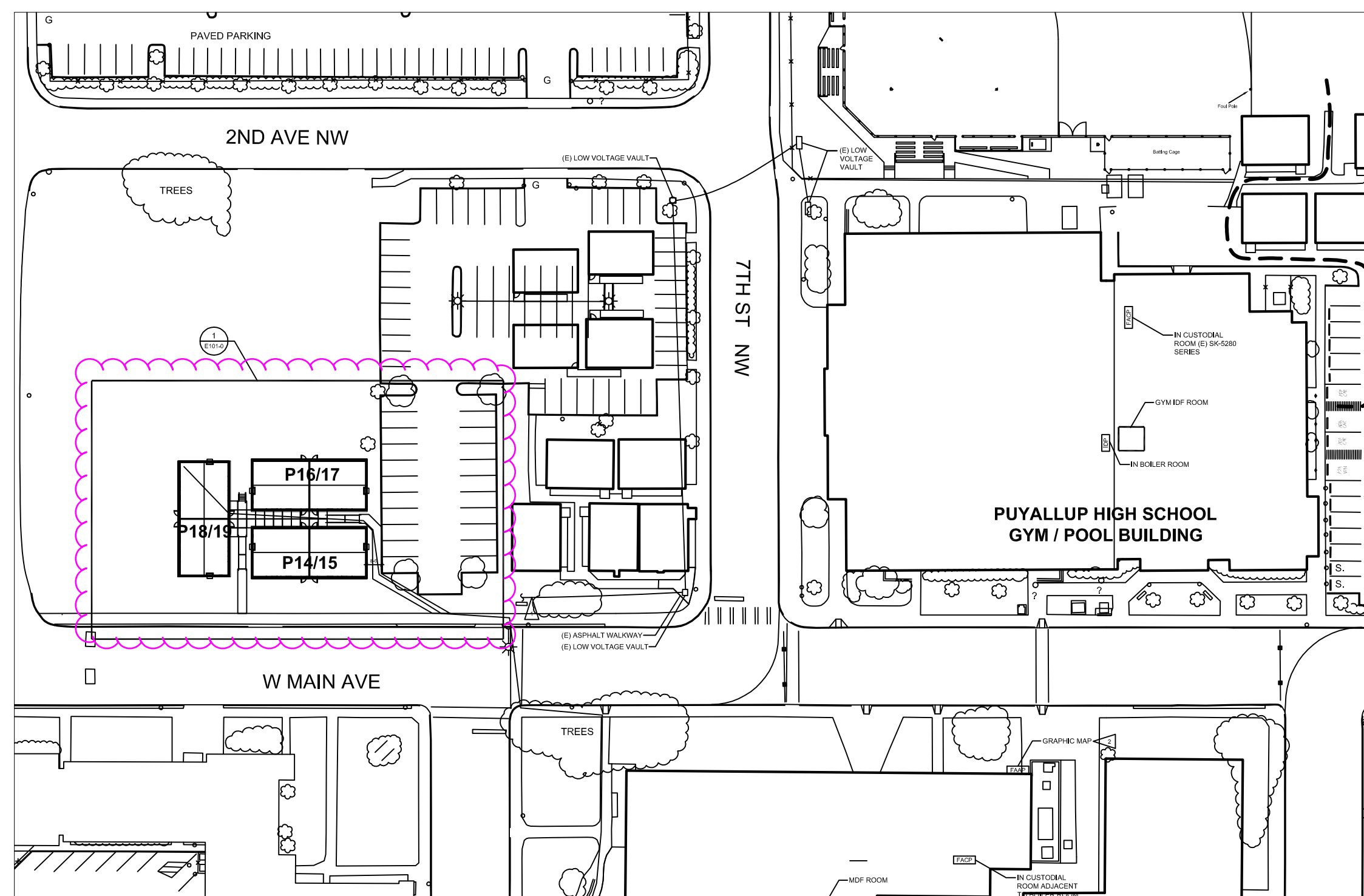
[illegible]

	CABLE/CONDUCTOR LIST						
	CIRCUIT TYPE	CABLE TYPE	NO.	GAUGE	COLOR	NOTES	
1	ADDRESSABLE CIRCUIT	FPLP (AQ226-U.G.)	At.2	12/2 UG 12/2	RED JACKET	NO STRIPE	
2	NOTIFICATION APPLIANCE CIRCUIT	FPLP (AQ226-U.G.)	Nt-4	14/2	RED JACKET	VARIOUS STRIPES	
3	CONVENTIONAL CIRCUIT	FPLP	B	12/2	RED JACKET	WHITE STRIPE	
4	24VDC POWER FOR AUX CONTROL FUNCTIONS	FPLP	C	12/2	RED JACKET	PURPLE STRIPE	
5	DOOR HOLD POWER	FPLP	Pt.2	16/2	RED JACKET	YELLOW STRIPE	
6		FPLP		16/2	RED JACKET	BLACK STRIPE	
7	ANNUNCIATOR CIRCUIT	THHN	J	14/1	GREEN		
8	BOOSTER POWER SUPPLY TRIGGER CIRCUIT	FPLP	T	14/2	RED JACKET	GRAY STRIPE	
9							
10							

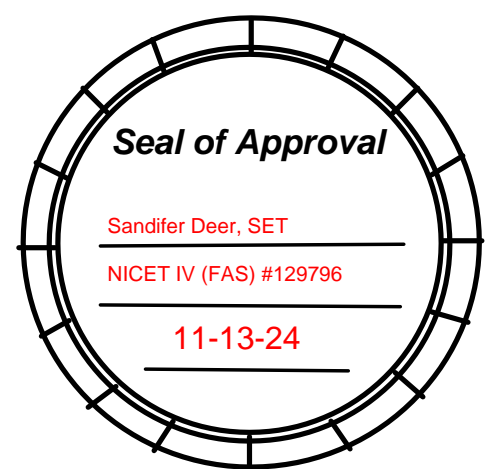
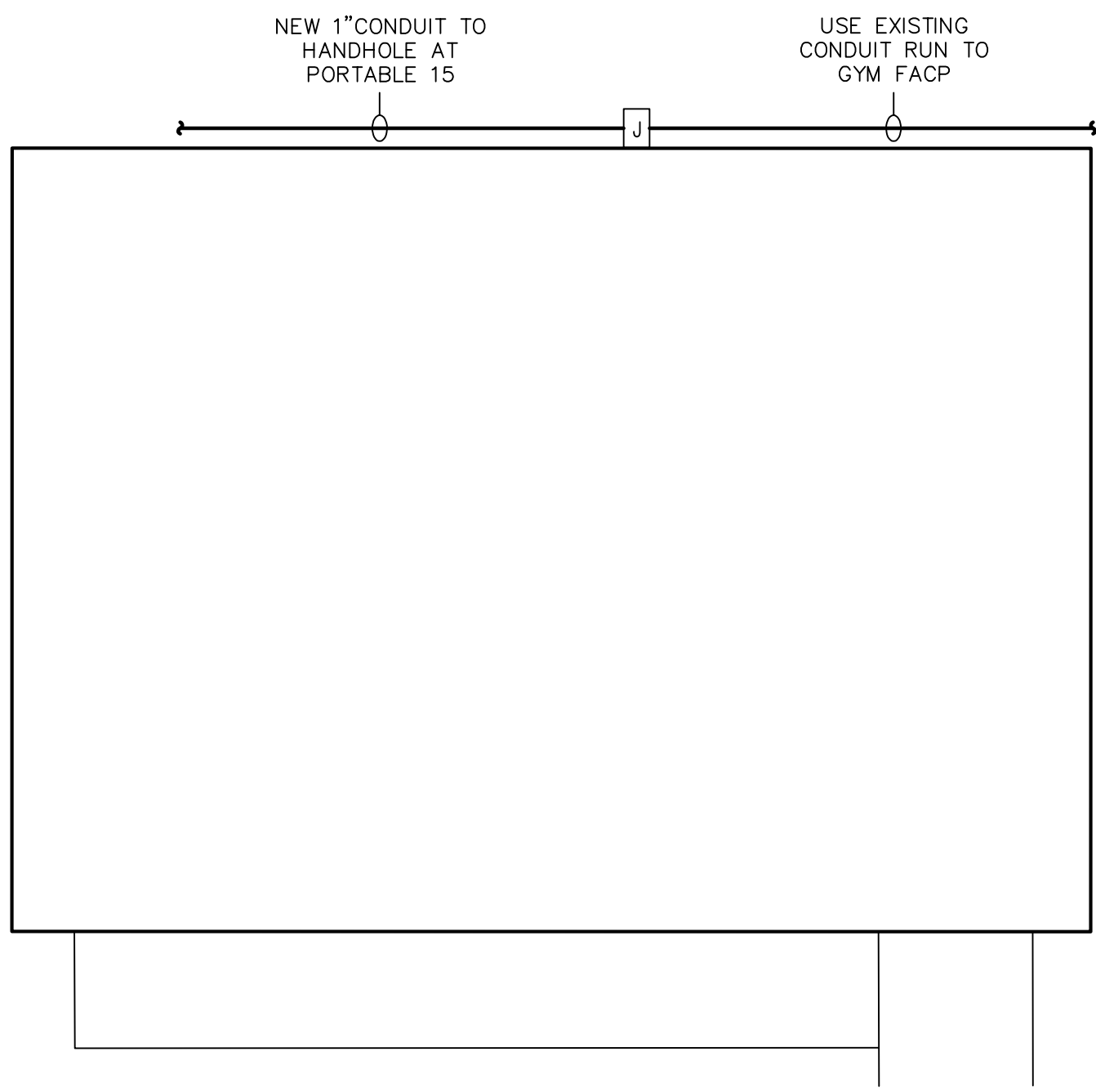


PORTABLES FLOOR PLAN 1
SCALE: N.T.S.

DESIGNED BY:
SANDIFER DEER
NICET IV #129796



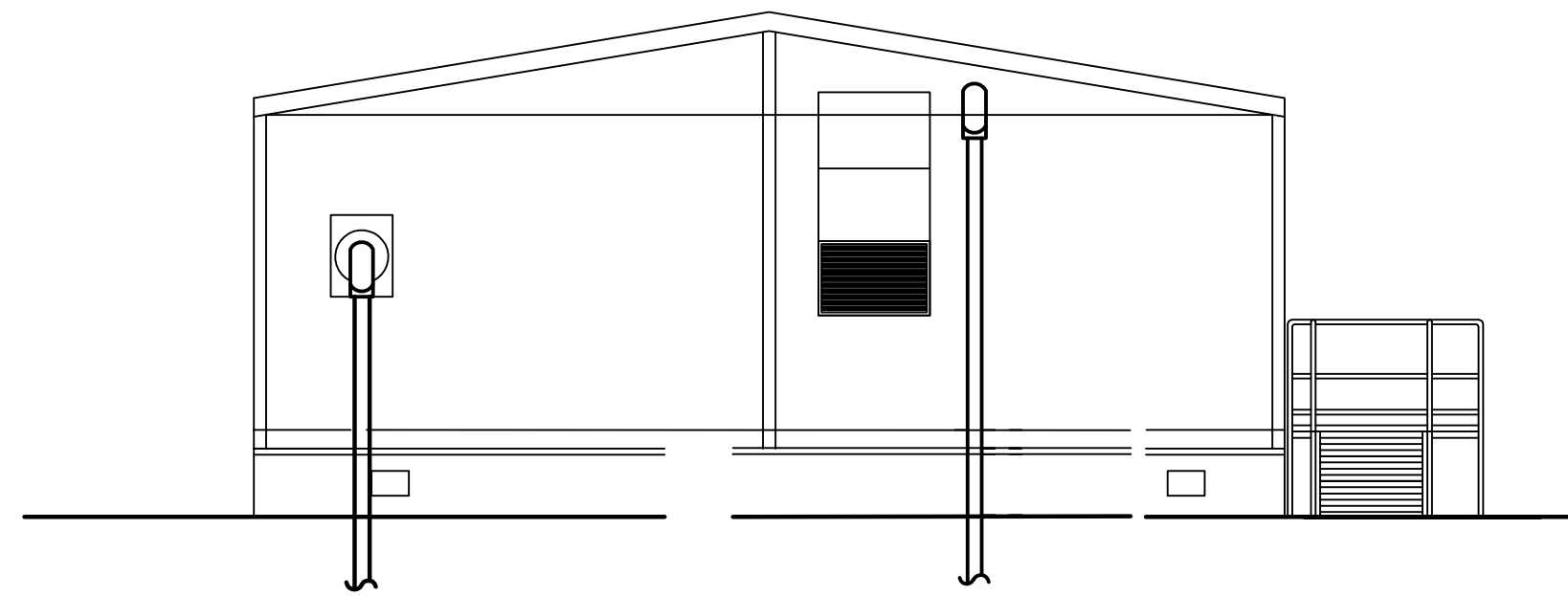
SITE MAP 1
SCALE: N.T.S.



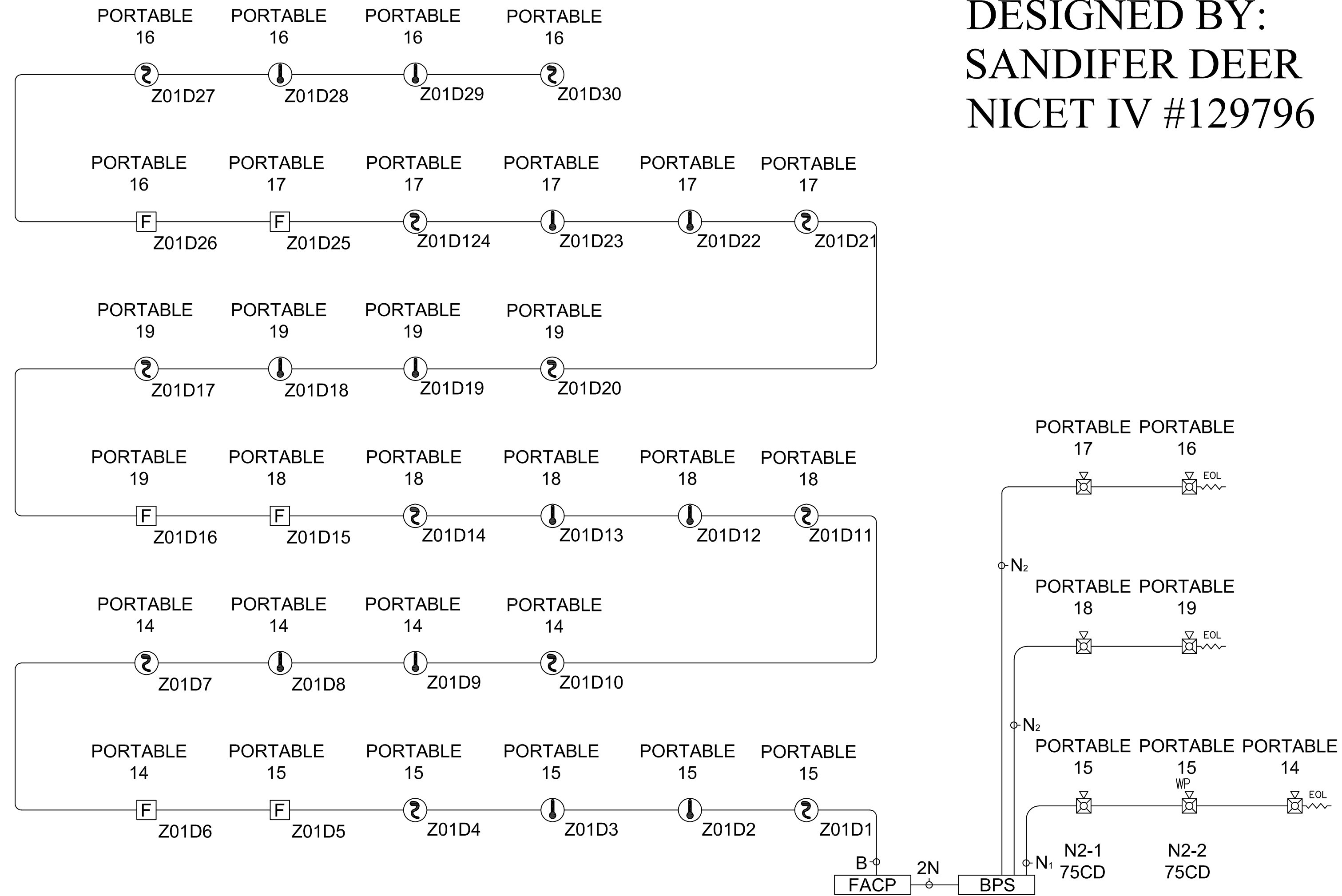
City of Puyallup
Development & Permitting Services
ISSUED PERMIT

Building	Planning
Engineering	Public Works
Fire	Traffic

E² Systems E-SQUARED SYSTEMS, LLC PO BOX 731227 PUYALLUP, WA 98373 PH: 253.284.3707 FAX: 253.284.3714	ISSUE COMMENTS	ISSUED FOR APPROVAL	DRN	DATE	REV
				11-6-24	0
PUYALLUP HIGH SCHOOL –PORTABLES (GYM) FIRE ALARM SYSTEM 711 W MAIN ST PUYALLUP, WA 98374	SCALE: 1/8"=1'-0"				
	FIRE/LIFE SAFETY SYSTEM				
FA-02	FLOOR PLAN SITE MAP				
	1430C 2 OF 6				

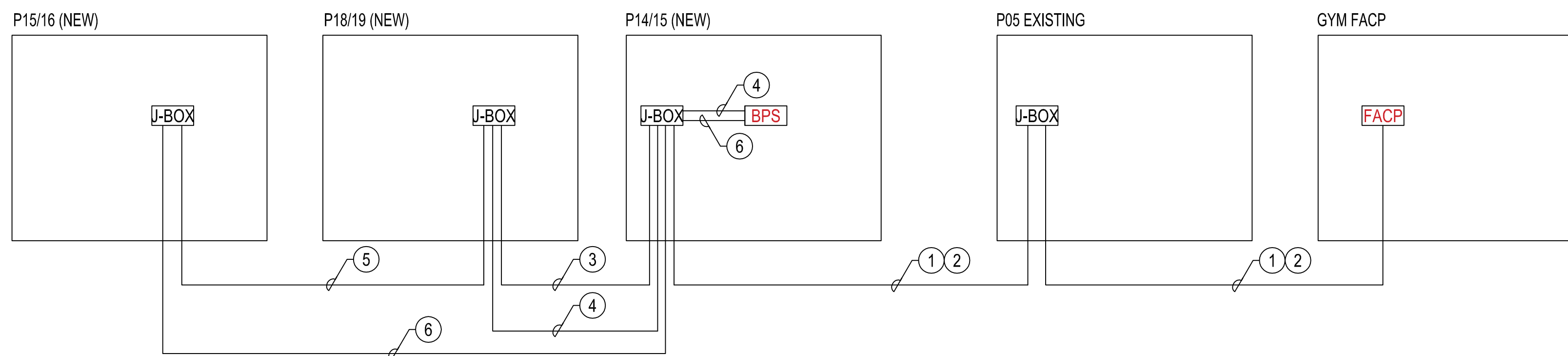


POWER & SYSTEMS CONDUIT PLAN 1
SCALE: 1/4"



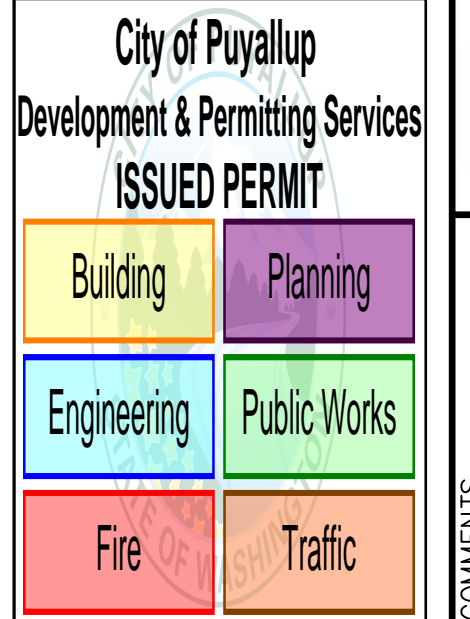
BACKBONE RISER CALBE PLAN 2
SCALE: 1/4"


- 1 FACP TO PORTABLE 15 FEED
ROUTE 1EA WESTPENN AQ227 (12/2) FROM FACP (ZONE 1) TO PORTABLE 15 FOR INITIATION CKT.
- 2 ROUTE WESTPENN AQ246 (14/4) FROM FACP BPS TO PORTABLE 15 BPS FOR BPS INPUT TRIGGER (ALTERNATIVE TO ROUTE TO PORTABLE 5 NAC CKT. MUST BE 4 CONDUCTOR).
- 3 PORTABLE 18/19 FEED
ROUTE WESTPENN AQ227 (12/2) FROM PORTABLE 14/15 TO PORTABLE 18 INITIATION ZONE 1.
- 4 ROUTE WESTPENN AQ226 (14/2) FROM PORTABLE 14/15 BPS TO PORTABLE 18/19 FOR NAC CKT. NOTE DIFFERENT WESTPENN CABLE.
- 5 PORTABLE 16/17 FEED
ROUTE WESTPENN AQ227 (12/2) FROM PORTABLE 18/19 TO PORTABLE 16/17 FOR INITIATION ZONE 1 ED OF LINE.
- 6 ROUTE WESTPENN AQ226 (14/2) FROM PORTABLE 14/15 BPS TO PORTABLE 16/17 FOR NAC CKT. NOTE THIS FEED RUNS FROM BPS TO PORTABLE 16/17.



BACKBONE RISER CALBE PLAN 3
SCALE: 1/4"

DESIGNED BY:
SANDIFER DEER
NICET IV #129796



A circular stamp with a decorative border. Inside the circle, the text "Seal of Approval" is written in a stylized font. Below this, the name "Sandifer Deer, SET" is printed, followed by a horizontal line. Under the line, the text "NICET IV (FAS) #129796" is printed, followed by another horizontal line. At the bottom, the date "11-13-24" is printed, followed by a third horizontal line.

E-SQUARED SYSTEMS, LLC
PO BOX 731227 PUYALLUP, WA 98373
PH: 253.284.3707 FAX: 253.284.3714

[illegible]

SCALE: 1/8" = 1'-0"

FIRE/LIFE SAFETY SYSTEM

PANEL DIAGRAMS

PUYALLUP HIGH SCHOOL –PORTABLES (GYM)
FIRE ALARM SYSTEM

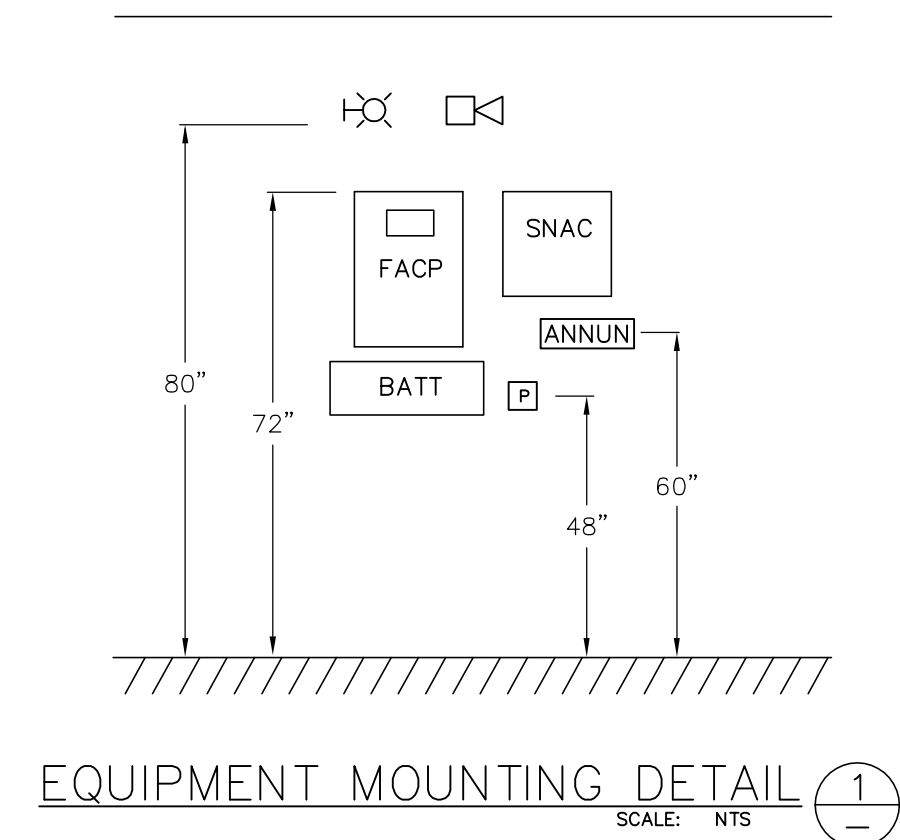
711 W MAIN ST
PUYALLUP, WA 98374

OB # 1210C

FA-04

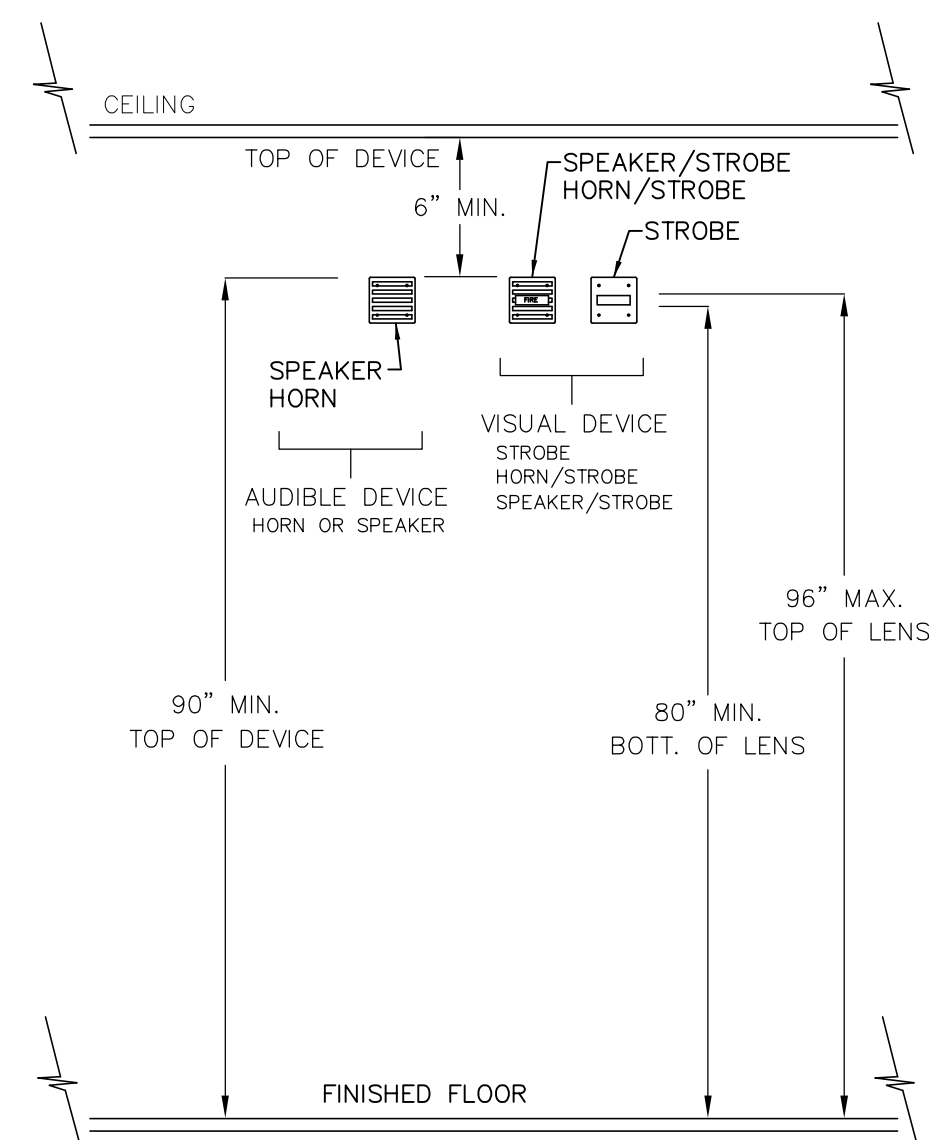
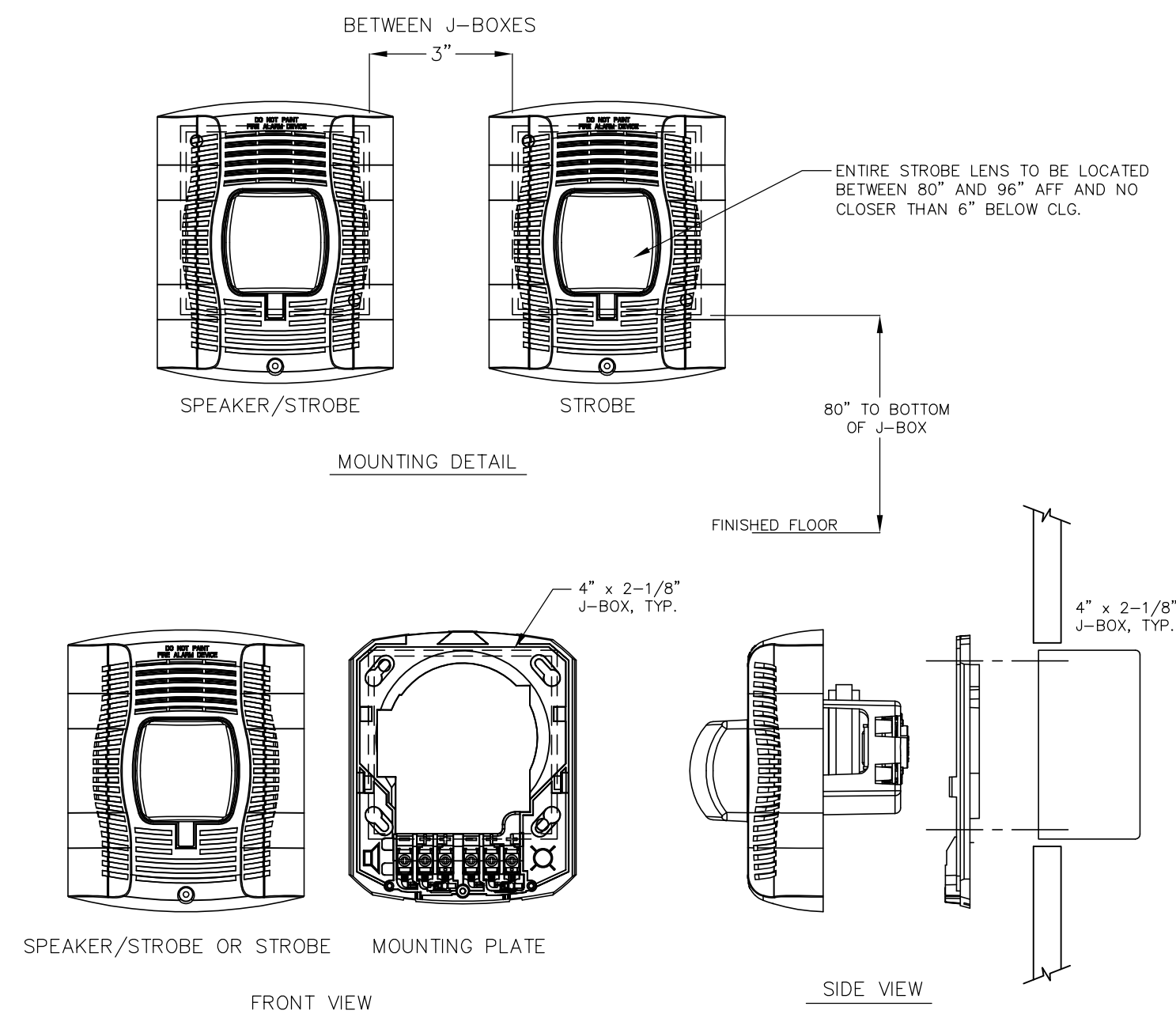
DETAILS SHOWN ARE TYPICAL AND ALL
DETAILS MAY NOT APPLY TO ALL JOBS.
REF. LAYOUT DRAWINGS& B.O.M.

SET STROBE CANDELA OUTPUT AS SHOWN ON PLANS.
SET HORNS TO MEDIUM UNLESS NOTED OTHERWISE.



NOTES:

1. DETAIL NOT INTENDED TO SHOW SPATIAL RELATIONSHIP OF DEVICES.
REFERENCE FLOOR PLANS FOR ACTUAL LOCATIONS.



INSTALLATION NOTES:

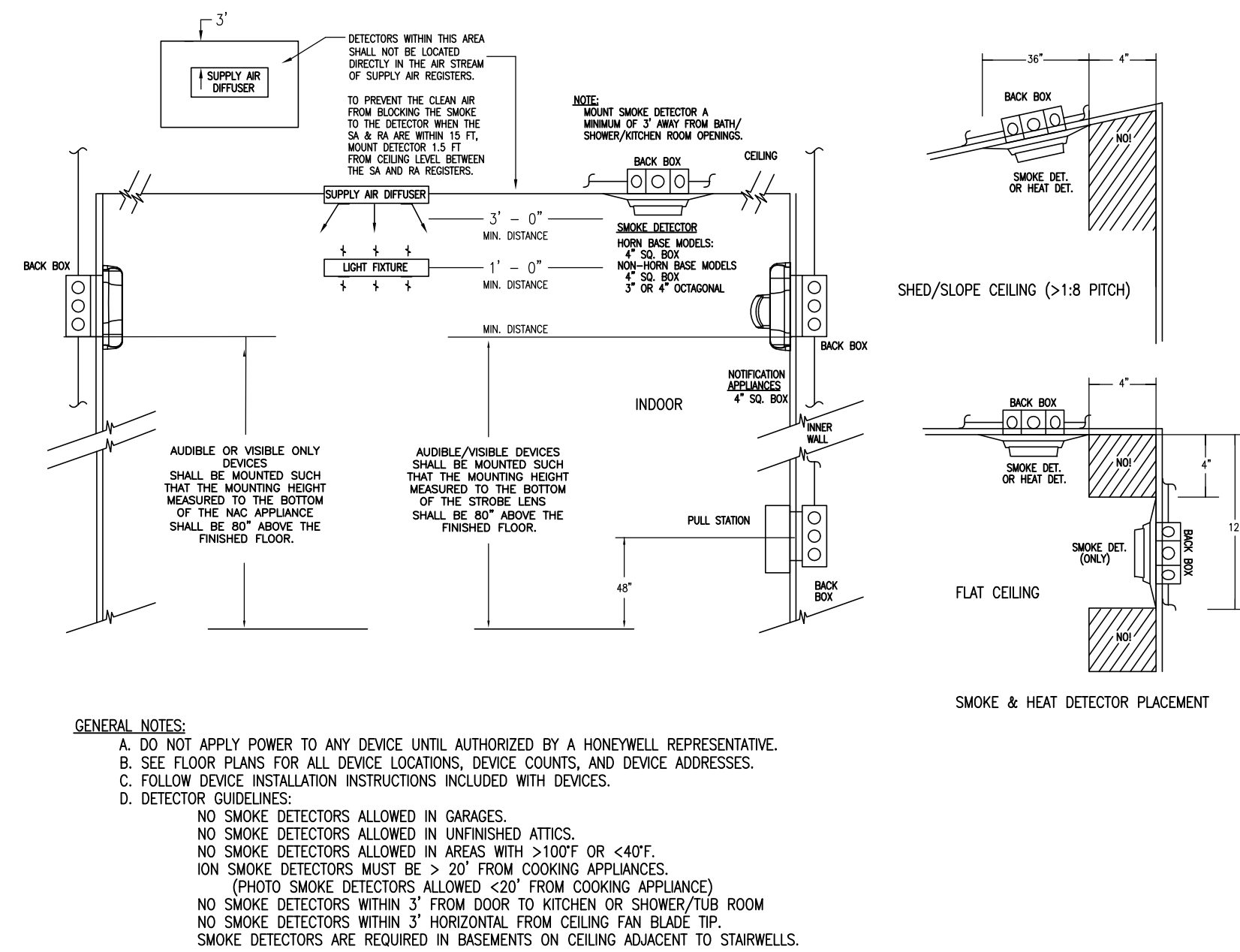
1. MOUNT VISIBLE AND COMBINATION AUDIBLE/VISIBLE APPLIANCES SUCH THAT THE ENTIRE LENS IS NOT LESS THAN 80" AND NOT GREATER THAN 96" A.F.F.
2. MOUNT AUDIBLE APPLIANCES SUCH THAT THE TOP OF THE APPLIANCE IS AT A MINIMUM HEIGHT OF 90" A.F.F. AND BELOW THE FINISHED CEILING AT A MINIMUM HEIGHT 6".
3. IN AREAS WHERE MORE THEN TWO VISIBLE NOTIFICATION APPLIANCES ARE IN ANY FIELD OF VIEW, THEY SHALL FLASH IN SYNCHRONIZATION.
4. IN CORRIDOR APPLICATIONS:
 - A. VISIBLE NOTIFICATION APPLIANCES SHALL BE LOCATED WITHIN 15' FROM THE END OF A CORRIDOR WITH SEPARATION NOT GREATER THAN 100' BETWEEN APPLIANCES.
 - B. WALL-MOUNTED VISIBLE NOTIFICATION APPLIANCES SHALL BE PERMITTED IN EITHER THE END WALL OR THE SIDE WALL OF THE CORRIDOR.
5. THERE SHALL BE NO INTERRUPTION OF THE CONCENTRATED VEINING PATH, SUCH AS A FIRE DOOR, AN ELEVATION CHANGE, OR ANY OTHER OBSTRUCTION, THE AREA SHALL BE TREATED AS A SEPARATE CORRIDOR.
5. SLEEPING AREAS:
 - A. FOR ROOMS WITH A LINEAR DIMENSION GREATER THAN 16', THE VISIBLE NOTIFICATION APPLIANCES SHALL BE LOCATED WITHIN 16' OF THE PILLOW.
 - B. IF THE DISTANCE FORM THE TOP OF THE STROBE LENS IS EQUAL TO OR GREATER THEN 24" FROM THE CEILING THEN THE STROBE SHALL BE 110cfd. IF THE DISTANCE FROM THE TOP OF THE STROBE LENS IS LESS THEN 24" TO THE CEILING THE STROBE SHALL BE 177cd.

MOUNTING HEIGHTS FOR
WALL MOUNTED NOTIFICATION APPLIANCES

SCALE: NTS

4
—

TYPICAL WALL MOUNT DETAIL (2)



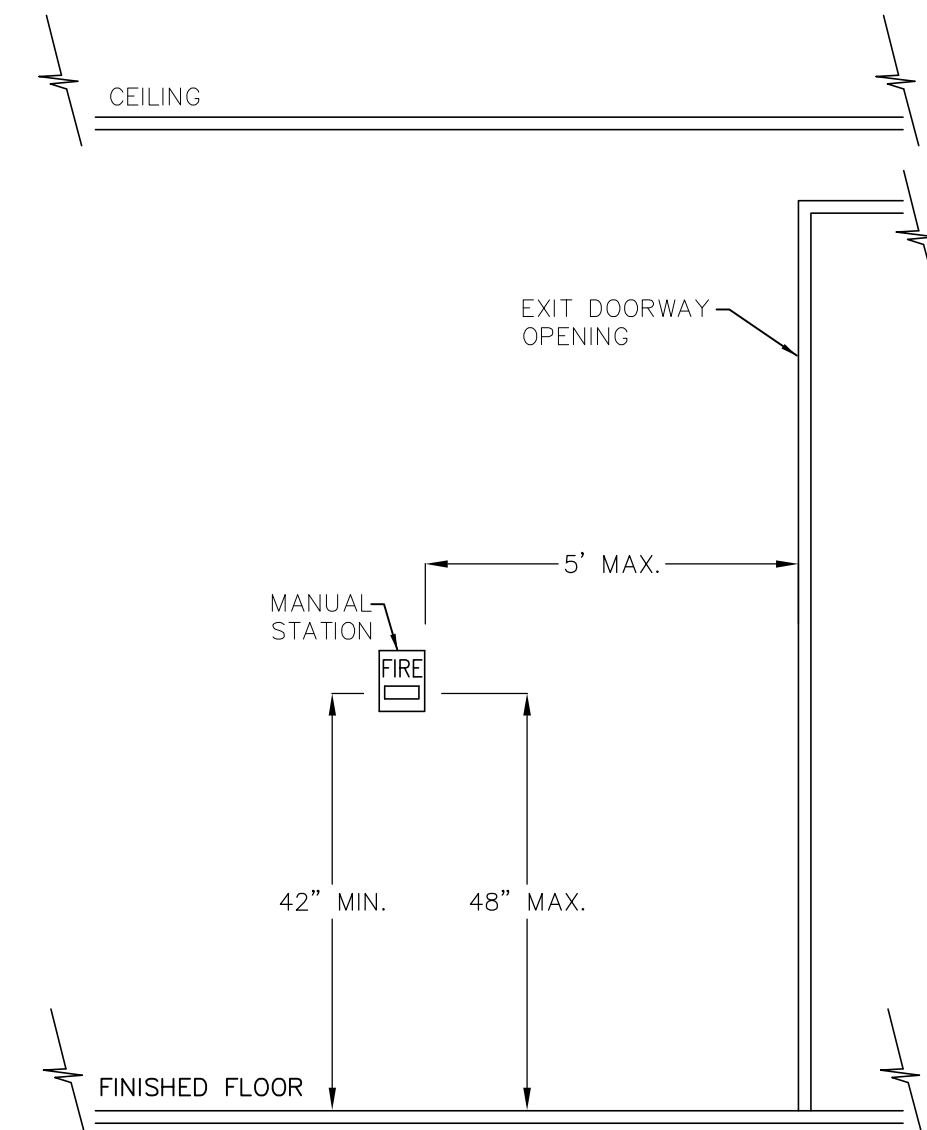
GENERAL NOTES:

- A. DO NOT APPLY POWER TO ANY DEVICE UNTIL AUTHORIZED BY A HONEYWELL REPRESENTATIVE.
- B. SEE FLOOR PLANS FOR ALL DEVICE LOCATIONS, DEVICE COUNTS, AND DEVICE ADDRESSES.
- C. FOLLOW DEVICE INSTALLATION INSTRUCTIONS INCLUDED WITH DEVICES.

DETECTOR GUIDELINES:

- NO SMOKE DETECTORS ALLOWED IN GARAGES.
- NO SMOKE DETECTORS ALLOWED IN UNFINISHED ATTICS.
- NO SMOKE DETECTORS ALLOWED IN AREAS WITH > 10'0" OR < 4'0".
- ION SMOKE DETECTORS MUST BE > 20' FROM COOKING APPLIANCES.
- (PHOTO SMOKE DETECTORS ALLOWED < 20' FROM COOKING APPLIANCES.)
- NO SMOKE DETECTORS WITHIN 3' FROM DOOR TO KITCHEN OR SHOWER/TUB ROOM.
- NO SMOKE DETECTORS WITHIN 3' HORIZONTAL FROM CEILING FAN OR LIGHT.
- SMOKE DETECTORS ARE REQUIRED IN BASEMENTS ON CEILING ADJACENT TO STAIRWELLS.

ADDITIONAL DEVICE MOUNTING DETAILS

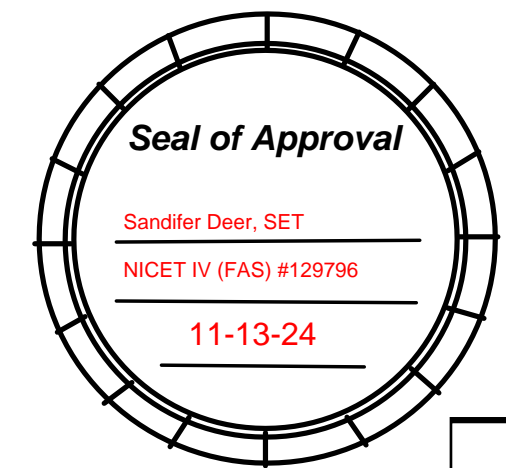


INSTALLATION NOTES:

1. THE OPERABLE PART OF EACH MANUAL FIRE ALARM BOX SHALL BE NOT LESS THEN 42" AND NOT GREATER THAN 48" A.F.F.
2. MANUAL FIRE ALARM BOXES SHALL BE LOCATED WITHIN 5' OF THE EXIT DOORWAY OPENING ON EACH FLOOR.

MANUAL STATION MOUNTING DETAILS 3
SCALE: NTS

DESIGNED BY:
SANDIFER DEER
NICET IV #129796



 **E² Systems**
EAGLE ELECTRONIC

E-SQUARED SYSTEMS, LLC
PO BOX 731227 PUYALLUP, WA 98373
PH: 253.284.3707 FAX: 253.284.3714

ISSUE COMMENTS
ISSUED FOR APPROVAL

REV.	DATE	DRN
0	11-6-24	SMD

SCALE: 1/8"=1'-0"

MOUNTING DETAIL

**PUYALLUP HIGH SCHOOL –PORTABLES (GYM)
FIRE ALARM SYSTEM**

711 W MAIN ST
PILYALUP WA 98374

JOB # 1210C

FA-05

5 OF 5