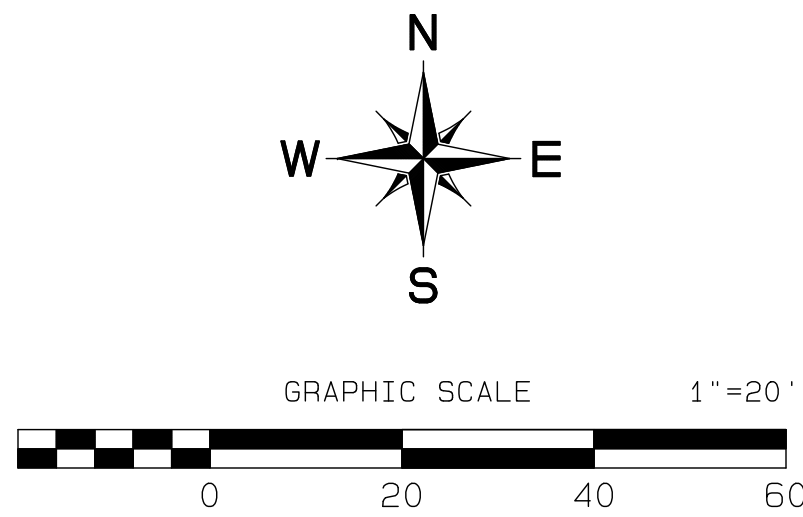
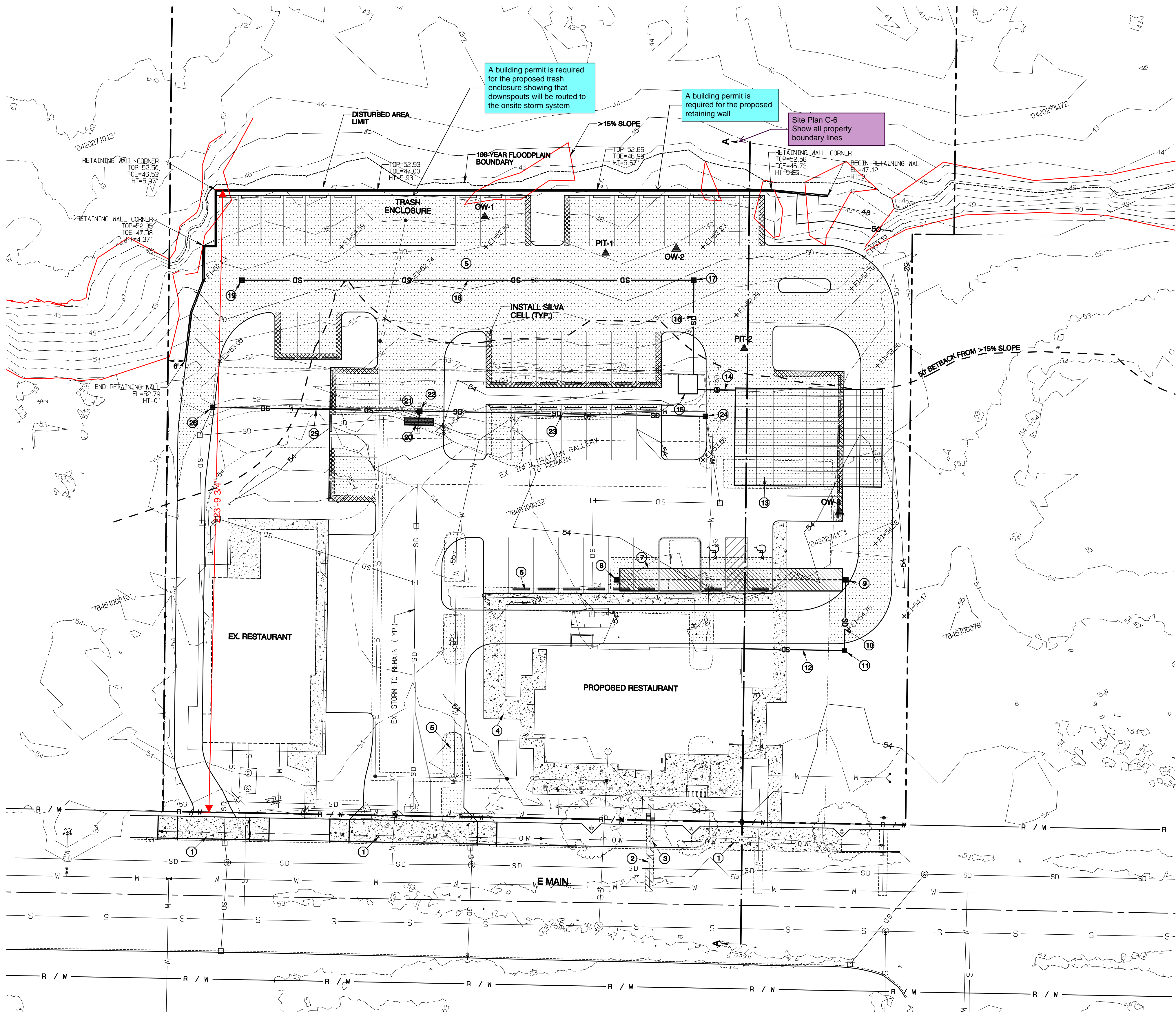


# Taco Time

Section 27, Township 20 N, Range 4 E, Willamette Meridian, Pierce County, Washington



### KEY NOTES

1. CONSTRUCT DRIVEWAY APPROACH PER STD 01.02.18
2. STREET PATCH PER STD 01.01.20
3. REPLACE SIDEWALK, MIN. 1 FULL PANEL SEE STD 01.02.01
4. ONSITE CONCRETE WALK, 4" THICK REFERENCE STD 01.02.01 FOR CONSTRUCTION REQUIREMENTS
5. NEW HMA PAVEMENT (TYP) SEE SHEET C-9 FOR SECTION
6. WHEELSTOP (TYP.) SEE SHEET C-9
7. ROOF DOWNSPOUT INFILTRATION TRENCH SEE DETAIL SHEET C-9 8"Wx80"Lx2'D 80'LF 8" PERF. PVC SDR-35 BOTTOM ELEV=49.80
8. JB A TYPE 1 W/SOLID LID RIM=53.98 I.E. 8" E=50.27
9. JB B TYPE 1 W/SOLID LID RIM=54.52 I.E. 8" W,S=50.27
10. 25'LF 8" PVC SDR-35 S=1.96%
11. SED CONTROL TYPE 1 SEE DETAIL SHEET C-11 RIM=54.77 I.E. 8" N,W=50.76
12. 37'LF 8" PVC SDR-35 S=0.51%
13. STORMTANK INFILTRATION GALLERY SEE DETAIL SHEET C-13 35"Wx51"Lx2'D BOTTOM ELEV=48.50
14. 14'LF 12" DI S=0.51%
15. FILTERRA - STPD0404 SEE DETAIL SHEET C-10 RIM=52.95 I.E. 12" E,N=49.48
16. 34'LF 12" DI S=0.50%
17. CB 1-1 TYPE 1 W/DUAL VANED GRATE RIM=52.04 I.E. 12" S,W=49.63
18. 162'LF 12" DI S=0.50%
19. CB 1-2 TYPE 1 W/DUAL VANED GRATE RIM=52.09 I.E. 12" E=50.44
20. SFCB 2-1 2-CARTRIDGE STORMFILTER CB SEE DETAIL SHEET C-11 CUT EXISTING 12" AND CONNECT RIM=53.81 I.E. 12" S,N=50.29
21. 4'LF 12" DI S=0.53%
22. CB 2-2 TYPE 1 W/DUAL VANED GRATE RIM=53.75 I.E. 12" S,E,W=50.31
23. 103'LF 12" DI S=0.79%
24. CB 2-3 TYPE 1 W/SOLID LID OUT AND CONNECT TO EX. 8" RIM=53.02 I.E. 12" W=51.12 I.E. EX. 8" S=51.45
25. 74'LF 12" DI S=1.02%
26. CB 2-4 TYPE 1 W/DUAL VANED GRATE CONNECT TO EX. 8" RIM=53.24 I.E. 12" E=51.07 I.E. EX. 8" S=51.40

The applicant shall request a sediment control and erosion inspection with a City Engineering Inspector through the CityView portal at least 48 hours in advance of job start. See City Standards 02.03.02 & 05.02.01.

Call Before You Dig, it's the law. Dial 811 or call 1-800-424-5555.

The applicant is responsible to schedule all utility inspections prior to backfilling.

Refer to approved civil plan: PRCPCP20231136 for sedimentation and erosion control methods

Refer to approved civil plan: PRCPCP20231136 for roof downspout control methods

In accordance to Puyallup Municipal Code 14.02.220(3) this project is required to install a double detector check valve assembly (DDCVA). Building occupancy will not be granted until the installation is completed and a final approval granted.

In accordance with Puyallup Municipal Code Chapter 11.08.135, the proposed project shall complete frontage improvements which may include curb, gutter, planter strips, street trees, sidewalks, storm drainage, street lighting, and one-half street paving (only required if the existing pavement condition is poor) as determined by Development Engineering. The building permit shall be conditioned that building occupancy will not be granted until the frontage improvements are completed and a final inspection granted.

City of Puyallup  
Development & Permitting Services  
ISSUED PERMIT

Building	Planning
Engineering	Public Works
Fire	Traffic

7/19/2023

ROBERT A. TRIVITT  
STATE OF WASHINGTON  
43715  
REGISTERED PROFESSIONAL ENGINEER

DATE

REV

NO.

DESCRIPTION

1

2

3

4

5

6

7

8

9

10

JOB NO. 23035

DATE: JULY 14, 2023

DESIGNED BY: PAUL GREEN

DRAWN BY: ROB TRIVITT

CHECKED BY: PAUL GREEN

APPROVED BY: PAUL GREEN

**AZURE GREEN**  
CONSULTANTS

+feasibility +planning +engineering +surveying

409 East Pioneer, Suite A - Puyallup, WA 98372  
phone: 253.770.3144 fax: 253.770.3142

**Paving & Storm Plan**

**Taco Time**

Taco Time NW  
3900 Maple Valley Hwy  
Renton, WA 98058  
Phone 206.235.3633  
Fax ronkin@tacomtime.com

DRAWING

**C-6**

SHEET 6 OF 16