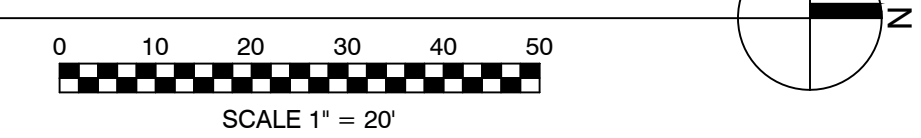


SITE PLAN SYMBOL

- EXISTING UNDERGROUND
- - - NEW UNDERGROUND (BY OTHERS)
- ⦿ NEW FIRE HYDRANT (BY OTHERS)
- ⦿ NEW VALVE (BY OTHERS)
- ⦿ NEW YARD FDC (BY OTHERS)
- ⦿ ELECTRIC BELL (BY OTHERS)
- ⦿ YARD PIV (BY OTHERS)
- ⦿ DDCVA IN VAULT (BY OTHERS)
- ⦿ CHECK VALVE IN VAULT (BY OTHERS)

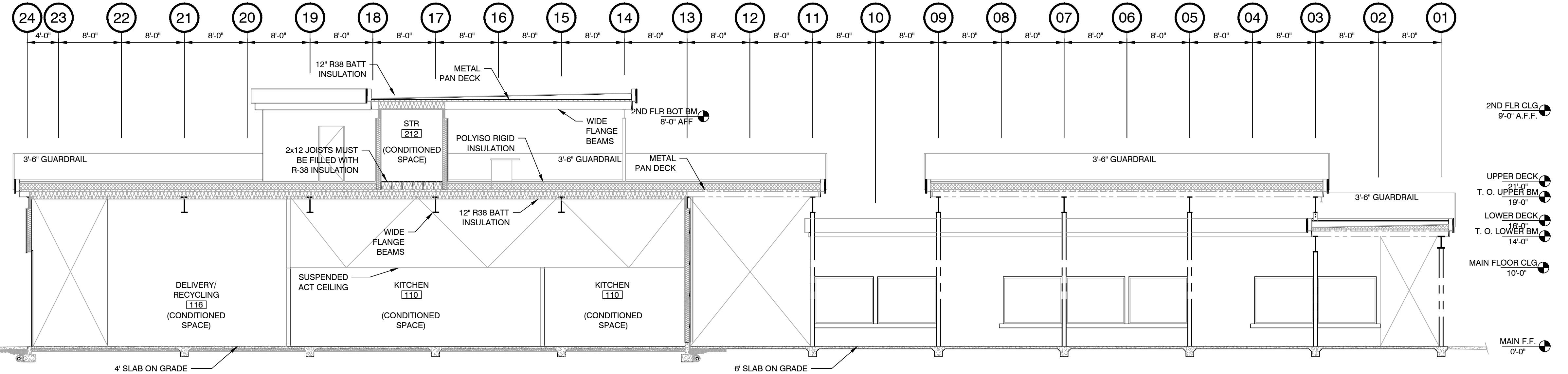
SITE PLAN



EQUIPMENT LIST

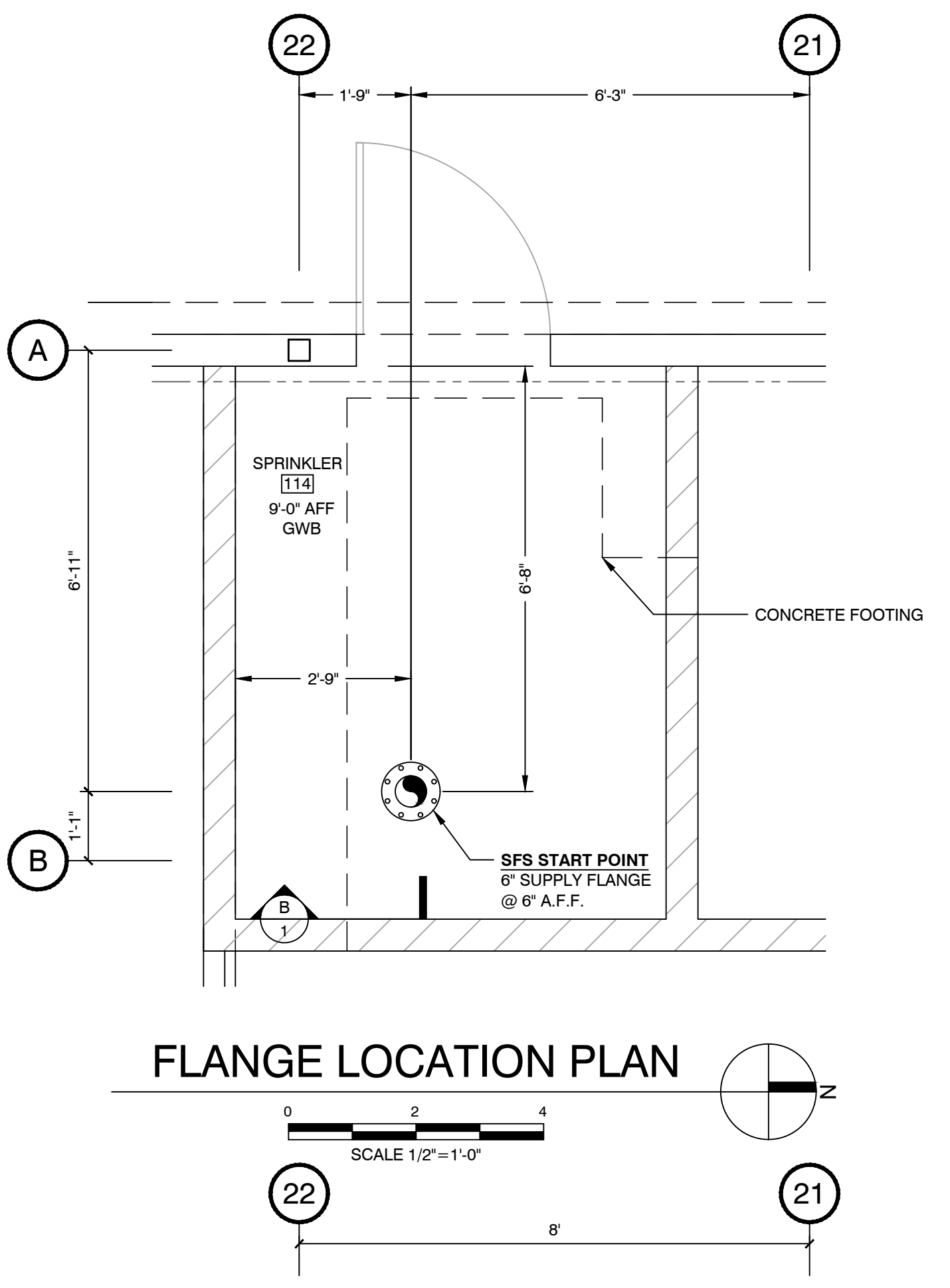
ITEM	QTY	SIZE	DESCRIPTION	MANUFACTURER	MODEL
1	1	-	SUPERVISORY AIR PRESSURE SWITCH	POTTER	PS40-2
2	1	4"	DRY PIPE VALVE	RELIABLE	DDX-LP
3	1	-	AIR MAINTENANCE DEVICE	RELIABLE	A2
4	1	-	ALARM PRESSURE SWITCH	POTTER	PS10-2
5	1	660 GAL	TANK MOUNTED AIR COMPRESSOR	GENERAL	LT620100B
6	1	6 HEAD	SPARE HEAD BOX	RELIABLE	RHB1

- PIPE ALL DRAINS TO SAFE DISCHARGE OUTSIDE
- RISER ROOM MUST BE MAINTAINED BY OTHERS AT A MINIMUM OF 40" F
- MAINTAIN 2" ANNULAR SPACE AROUND ALL PIPE PASSING THROUGH CONCRETE FLOORS

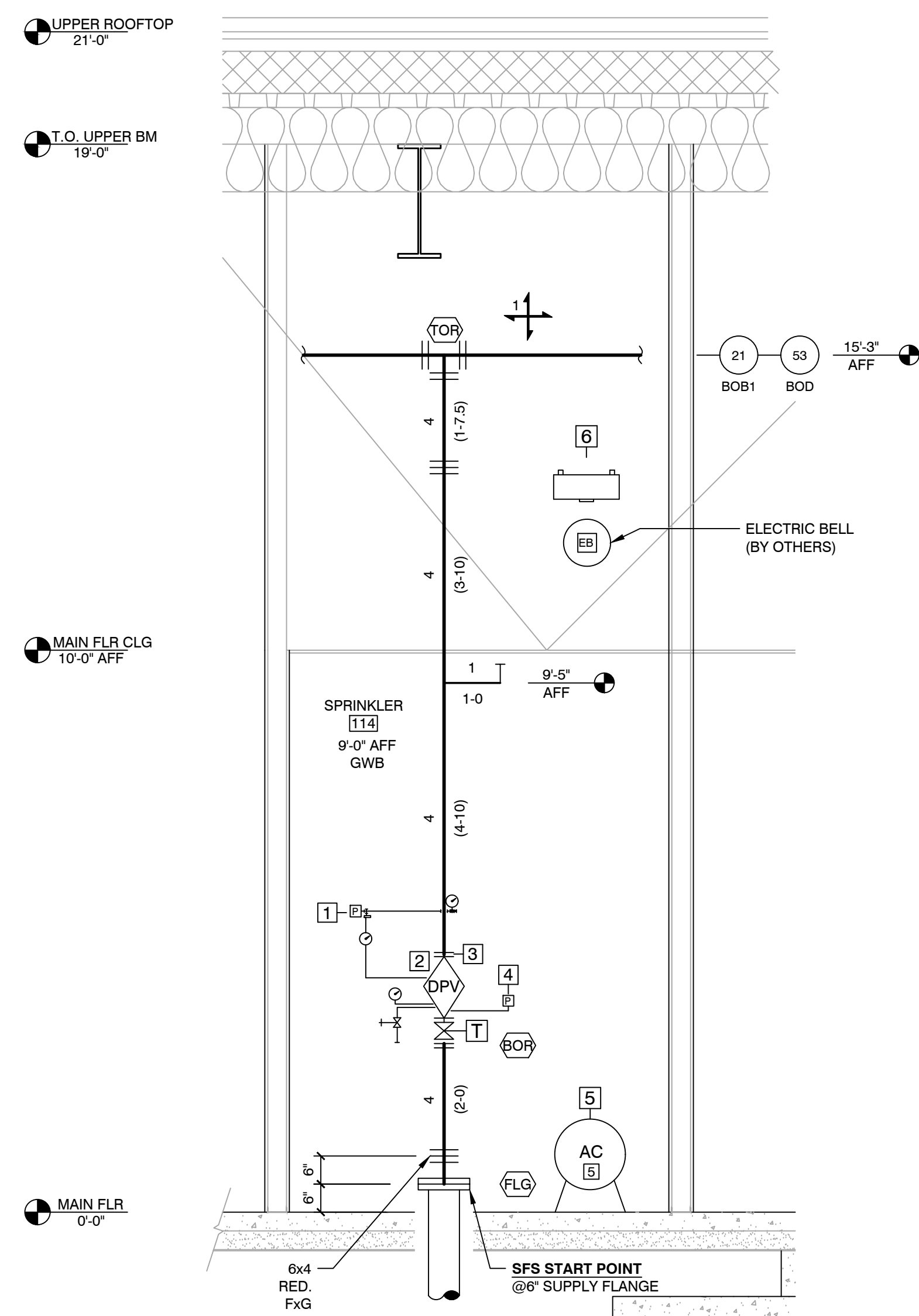
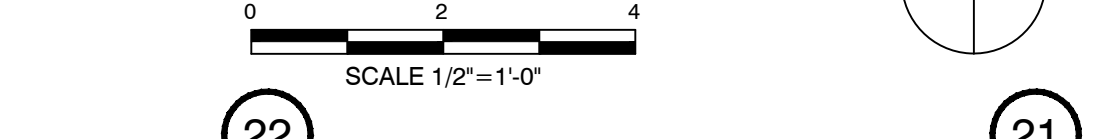


SECTION A-1

FACING WEST
N.T.S.



FLANGE LOCATION PLAN



SECTION B-1

SCALE 1/2" = 1'-0"
FACING WEST

SPARE SPRINKLERS						
MANUFACTURER	TYPE	MODEL	FINI SH	K FACTOR	THREAD SIZE	TEMP QTY
RELIABLE	SSU	F1FR56	BRZ	5.6	1/2"	200° 2
RELIABLE	SSP	F1FR56	CHR	5.6	1/2"	200° 3
RELIABLE	HSW	F1FR56	CHR	5.6	1/2"	200° 1

SPARE WRENCHES	
RELIABLE MODEL W2 HEAD WRENCH	1

GENERAL NOTES

- ALL STEEL PIPE TO BE AS FOLLOWS UNLESS NOTED OTHERWISE:
- | PIPE SIZE | SCHEDULE | WALL THICKNESS | INTERNAL DIAMETER | END PREP TYPES ALLOWED | WEIGHT PER FOOT | CAPACITY IN GALLONS |
|-----------|-----------|----------------|-------------------|---|-----------------|---------------------|
| 1 | 40 | 0.133 | 1.049 | THREADED; CUT GROOVED; ROLL GROOVED; PLAN END, POLISHED | 2.05 | 0.044 |
| 1 1/4 | 40 | 0.140 | 1.380 | THREADED; CUT GROOVED; ROLL GROOVED; PLAN END, POLISHED | 2.92 | 0.078 |
| 1 1/2 | FLOW PIPE | 0.095 | 1.710 | ROLL GROOVED; POLISHED PLAN END (FOR BUTT WELDING) | 2.83 | 0.122 |
| 2 | FLOW PIPE | 0.095 | 2.185 | ROLL GROOVED; POLISHED PLAN END (FOR BUTT WELDING) | 3.04 | 0.158 |
| 2 1/2 | FLOW PIPE | 0.086 | 2.703 | ROLL GROOVED; PLAN END (FOR BUTT WELDING) | 5.10 | 0.208 |
| 3 | FLOW PIPE | 0.093 | 3.314 | ROLL GROOVED; PLAN END (FOR BUTT WELDING) | 7.18 | 0.448 |
| 4 | FLOW PIPE | 0.101 | 4.268 | ROLL GROOVED; PLAN END (FOR BUTT WELDING) | 11.03 | 0.758 |
| 5 | 10 | 0.134 | 5.286 | ROLL GROOVED; PLAN END (FOR BUTT WELDING) | 17.300 | 1.144 |
| 6 | ** | 0.134 | 6.397 | ROLL GROOVED; PLAN END (FOR BUTT WELDING) | 23.000 | 1.640 |
| 8 | ** | 0.188 | 8.249 | ROLL GROOVED; PLAN END (FOR BUTT WELDING) | 40.080 | 2.78 |
- ** WALL THICKNESS PER NFPA # 13
- ALL GROOVED COUPLINGS TO BE RIGID TYPE UNLESS NOTED (|||) WHICH ARE FLEXIBLE.

SCOPE OF WORK

SMITH FIRE SYSTEMS (SFS) WILL INSTALL A DRY PIPE SPRINKLER SYSTEM TO PROTECT THE HEATED INTERIOR AND EXTERIOR OF THE BUILDING. SFS WILL START WORK AT A 6" SUPPLY FLANGE LEFT BY OTHERS INSIDE THE NEW RISER ROOM. THE SYSTEM WILL BE INSTALLED PER NFPA 13 (2019) AND THE CITY OF PUYALLUP.

CLARIFICATIONS

ALL CONDITIONED SPACES, INCLUDING BUT NOT LIMITED TO THE SPRINKLER RISER ROOM, TO BE MAINTAINED AT OR ABOVE 40°F BY OTHERS.

EXCLUSIONS

- UNDERGROUND WORK OF ANY KIND. (NOTE: REMOTE BACKFLOW AND FDC IN YARD, TO BE INSTALLED BY OTHERS)
- SPRINKLER PROTECTION FOR EXTERIOR CANOPIES NOT EXCEEDING 4' IN DEPTH.
- 3D DESIGN COORDINATION.
- SPRINKLER PROTECTION FOR HIGH PILED OR RACK STORAGE. (IF REQUIRED)
- FLOOR MUST BE FREE AND CLEAR OF MERCHANDISE, STOCK, RACKING OR CONSTRUCTION MATERIALS TO ALLOW FOR ACCESS TO PIPE AT THE STRUCTURE.
- ROUGH IN OF NEW SPRINKLER DROPS MUST BE COMPLETED BEFORE NEW WALLS OR CEILINGS ARE INSTALLED.
- CUTTING/PATCHING OR FIRE CAULKING OF WALLS, CEILINGS OR FLOORS REQUIRED FOR NEW/EXISTING PENETRATIONS.
- DOH, FM, OTHER INSURANCE OR OUTSIDE REVIEW REQUIREMENTS, APPROVALS OR FEES.
- PAINTING AND LABELLING OF NEW OR EXISTING PIPE, EXCEPT THAT IS REQUIRED BY CODE.
- FIRE ALARM OR ELECTRICAL WIRING OF ANY KIND.
- INSULATION OF ANY KIND. (IF REQUIRED)
- COOKING HOOD OR DUCT PROTECTION OF ANY KIND, INCLUDING CAPTIVE AIR SYSTEMS.
- MODIFICATIONS REQUIRED TO ACCOMMODATE WORK OF OTHER TRADES, INCLUDING RELOCATING EXISTING BRANCHLINES OR MAINS.
- STRUCTURAL ANALYSIS TO VERIFY LOAD CAPACITIES FOR HANGING SPRINKLER SYSTEM.
- BACKFLOW DEVICE INSTALLATION AND CERTIFICATION.
- OVERTIME HOURS OR AFTER HOURS.
- SALES TAX.
- BID BOND. (IF REQUIRED)

DESIGN CRITERIA

KITCHENS AND BAR

ORDINARY HAZARD - GROUP I (PER NFPA 2019 ED)
DESIGN DENSITY = .15 / 1500 SQ. FT.

NFPA 13 SECTION 20.13.3.: FOR DRY PIPE SYSTEMS USING CMDA CRITERIA, THE AREA OF SPRINKLER OPERATION SHALL BE INCREASED BY 30% WITHOUT REVISING THE DENSITY.

DESIGN AREA INCREASE = 1.3(1500) = 1950 SQ. FT.

FINAL DENSITY: .15 GPM / 1950 SQ. FT

MECHANICAL EQUIPMENT ROOMS

ORDINARY HAZARD - GROUP II (PER NFPA 2019 ED)
DESIGN DENSITY = .20 / 1500 SQ. FT.

NFPA 13 SECTION 20.13.3.: FOR DRY PIPE SYSTEMS USING CMDA CRITERIA, THE AREA OF SPRINKLER OPERATION SHALL BE INCREASED BY 30% WITHOUT REVISING THE DENSITY.

DESIGN AREA INCREASE = 1.3(1500) = 1950 SQ. FT.

FINAL DENSITY: .20 GPM / 1950 SQ. FT

OFFICE AND PUBLIC AREAS

LIGHT HAZARD (PER NFPA 13, 2019 ED)
DESIGN DENSITY = 0.10 GPM / 1500 SQ. FT.

NFPA 13 SECTION 20.13.3.: FOR DRY PIPE SYSTEMS USING CMDA CRITERIA, THE AREA OF SPRINKLER OPERATION SHALL BE INCREASED BY 30% WITHOUT REVISING THE DENSITY.

DESIGN AREA INCREASE = 1.3(1500) = 1950 SQ. FT.

FINAL DENSITY: .10 GPM / 1950 SQ. FT

DRY SYSTEM NUMBER 1		
AREA	SQ. FT.	SPRINKLERS
MAIN FLOOR	14,542	164
ROOF TOP	10,321	31
TOTAL:	24,863	195

MOST DEMANDING AREA SYS. 1
DENSITY: .15 GPM OVER 1950 SQUARE FEET
BASE OF RISER: 472.2 GPM REQUIRED AT 40.6 PSI
SUMMARY: 722.2 GPM REQUIRED AT 47.1 PSI
AT CONNECTION TO SOURCE
(INCLUDING 250 GPM FOR HOSE STREAMS)
DRY SYSTEM VOLUME: 660 GALLONS

SITE PLAN

WATER SUPPLY INFORMATION

STATIC 59 PSI
RESIDUAL 20 PSI
FLOWING 1560 GPM
LOCATION OF TEST 110 9TH AVE SW, PUYALLUP WA 98371
DATE OF TEST 11.19.24
DATA SUPPLIED BY CITY OF PUYALLUP
ELEV. OF FLOW TEST: 0

SPRINKLER LEGEND										
SYM	MANUFACTURER	S.I.N.	TYPE	MODEL	SPRINKLER	SPRINKLER	SPRINKLER	SPRINKLER	SPRINKLER	QUANTITY

ABBREVIATIONS	
AFF	ABOVE FINISHED FLOOR
BOF	BOTTOM OF BEAM
BOB	BOTTOM OF DECK
BOU	BOTTOM OF ROOF
BOF	BOTTOM OF FURLEIN
CIS	CUT TO BUTT
FD	FIELD RISER
IFW	INSIDE FACE OF WALL
OFW	OUTSIDE FACE OF WALL
NAG	NO AUTO. SPRINKLERS
UNO	UNLESS NOTED OTHERWISE

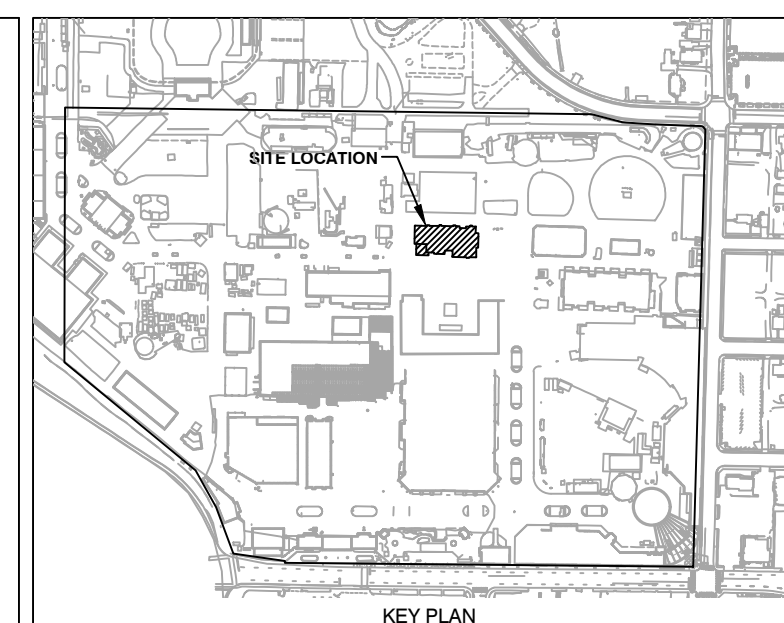
SYMBOL LEGEND	
⊖	CENTERLINE OF PIPE TO REFERENCED STRUCTURE IN INCHES
⊕	2-WAY EARTHQUAKE SWAY BRACE LETTER INDICATES TYPE
⊕	4-WAY EARTHQUAKE SWAY BRACE LETTER INDICATES TYPE
⊕	HANGER LOCATION
⊕	ELEVATION ABOVE REFERENCED POINT IN FEET AND INCHES
⊕	HYDRAULIC CALCULATION NODE
⊕	FLEXIBLE COUPLING
⊕	RIGID COUPLING

REVISIONS			
NO.	DATE	BY	REASON FOR REVISION

CONTRACT WITH
MOUNTAIN CONSTRUCTION
3411 90TH STREET S, STE A
LAKEWOOD, WA 98499

PROJECT MANAGER: KEN SCHMIDT
PHONE: (253)365-3974
FAX: (253)365-6122

SUPERINTENDENT: DAVE DOUGLAS
PHONE: (253)355-6122
FAX: (253)355-6122



SMITH FIRE SYSTEMS, INC.
1108 34th AVE EAST
TACOMA, WA 98404
CONTR. REG. NO. SMITHFS13607
Bus: (253) 826-1880 FAX: (253) 826-2350

WA STATE FAIR INTERNATIONAL VILLAGE
110 9TH AVE SW
PUYALLUP, WA 98371

DESIGNER	PROJECT MGR	DATE	SHEET	JOB NO.
A. RIDEOUT	LANE L.	11.19.24	1 OF 4	TC24073