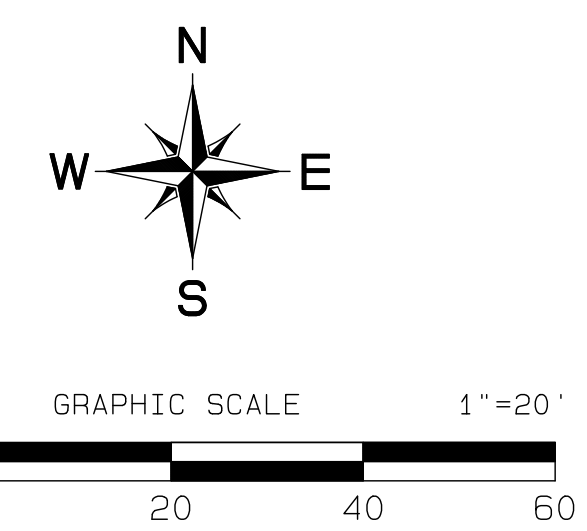
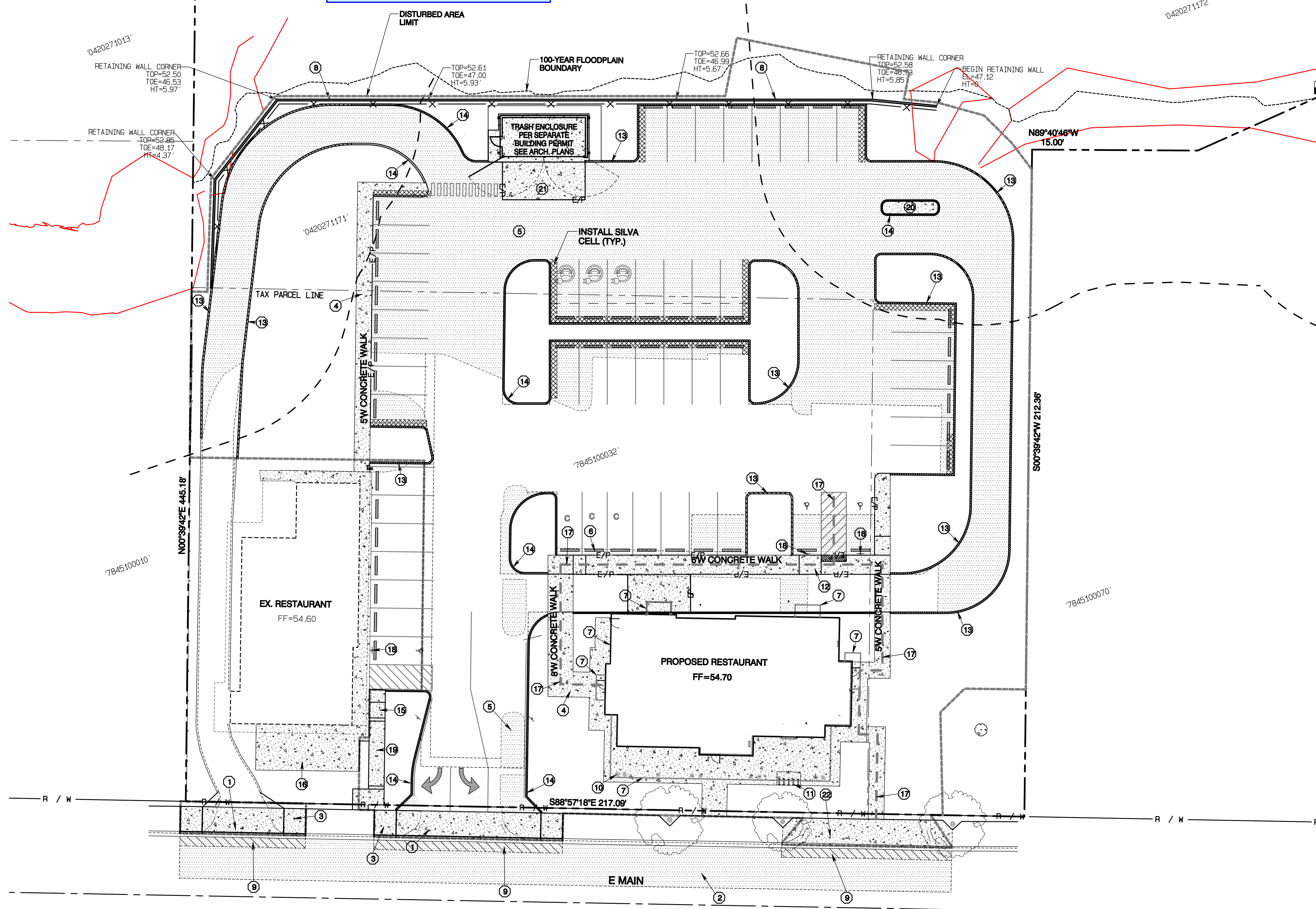


Taco Time

Section 27, Township 20 N, Range 4 E, Willamette Meridian, Pierce County, Washington

No proposed footings, posts, or supports shall be constructed on or above any existing public utility connections without first relocating the utility services or protecting it in place.



KEY NOTES

- 1 CONSTRUCT DRIVEWAY APPROACH PER STD 01.02.18, SHEET C-11
- 2 2" HMA OVERLAY
- 3 REPLACE SIDEWALK, MIN. 1 FULL PANEL SEE STD 01.02.01, SHEET C-11 (TYP)
- 4 ONSITE CONCRETE WALK, 4" THICK REFERENCE STD 01.02.01, SHEET C-11, FOR CONSTRUCTION REQUIREMENTS
- 5 NEW HMA PAVEMENT (TYP) SEE SHEET C-11 FOR SECTION
- 6 WHEELSTOP (TYP.) SEE SHEET C-13
- 7 ROOF OVERHANG
- 8 CONCRETE BLOCK RETAINING WALL. SEE SHEET C-9 FOR PROFILE OVER 4 FEET, THEREFORE SEPARATE BUILDING PERMIT REQUIRED, FENCE REQUIRED WHERE HEIGHT 3' OR GREATER.
- 9 PAVING RESTORATION PER CURB CUT STD DWG 01.02.10, SHEET C-11
- 10 COLUMN FOR OVERHEAD CANOPY, TYP.
- 11 BIKE RACK, MEET OR EXCEED FAIRWEATHER BR-1.5
- 12 8" WIDE CONCRETE SIDEWALK WITH INTEGRAL CURB, BOTH SIDES SEE DETAIL SHEET C-11
- 13 EXTRUDED CURB, SEE DETAIL SHEET C-11
- 14 CEMENT CONCRETE TRAFFIC CURB, SEE DETAIL SHEET C-11
- 15 CEMENT CONCRETE CURB RAMP, SEE DETAIL BELOW
- 16 CONCRETE PATIO - 4" THICK, 14.5"x33"
- 17 ADA ROUTE (SEE SHEET C-16)
- 18 ADA PARKING SIGN, SEE DETAIL SHEET C-16
- 19 ADA RAMP WITH RAILINGS, SEE DETAIL SHEET C-16
- 20 CONCRETE FILL, 4" MIN THICKNESS
- 21 8" THICK CEMENT CONCRETE, SEE SHEET C-16 FOR GRADING DETAIL
- 22 INSTALL SIDEWALK TO REPLACE DRIVEWAY APPROACH SEE CITY STD 01.02.01, SHEET C-11

SEE SHEET C-16 FOR GRADING/ADA ROUTE DETAILS

City of Puyallup
Development & Permitting Services
ISSUED PERMIT

Building	Planning
Engineering	Public Works
Fire	Traffic

City of Puyallup
Planning Division APPROVED

See permit conditions.
NComstock
01/15/2025
3:04:56 PM

City of Puyallup
Building Reviewed for Compliance

SKinnear
01/15/2025
2:50:04 PM

Approval of submitted plans is not an approval of omissions or oversights by this office or non compliance with any applicable regulations of local government. The contractor is responsible for making sure that the building complies with all applicable codes and regulations of the local government.

The approved construction plans, documents, and all engineering must be posted on the job at all inspections in a visible and readily accessible location.
Full sized legible color plans are required to be provided by the permittee on site for inspection.

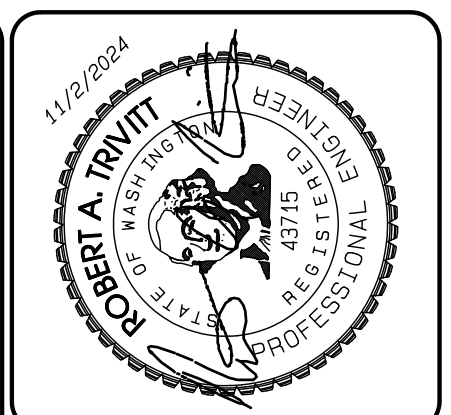
CALL BEFORE YOU DIG
IT IS THE LAW
CALL 811
OR
800-424-5555

APPROVED

BY: _____ CITY OF PUYALLUP
DEVELOPMENT SERVICES

DATE: _____

NOTE:
THIS APPROVAL IS VOID AFTER 180 DAYS FROM APPROVAL DATE.
THE CITY WILL NOT BE RESPONSIBLE FOR ERRORS AND/OR OMISSIONS ON THESE PLANS.
FIELD CONDITIONS MAY DICTATE CHANGES TO THESE PLANS AS DETERMINED BY THE ENGINEERING SERVICES MANAGER.



REVISION	DATE
1. Revised per City Review.	1/15/24
2. Revised per City Review. Switch to permeable pavement.	6/19/24
3. Revised per City Review.	10/17/24
4. Revised per City Review.	10/17/24
5. Revised per City Review.	10/17/24
6.	
7.	
8.	
9.	
10.	

JOB NO.	DATE
2303	JULY 14, 2023
DESIGNED BY: Paul Green	
DRAWN BY: Bob Trivitt	
CHECKED BY: Paul Green	
APPROVED BY: Paul Green	

AZURE GREEN CONSULTANTS
+ feasibility + planning + engineering + surveying

409 East Pioneer, Suite A - Puyallup, WA 98372
phone: 253.770.3144, fax: 253.770.3142

Taco Time
Puyallup TT, LLC
3401 Lind Ave SW
Renton, WA, 98057
Phone 206.256.3683
Fax ronkitt@tacodinner.com

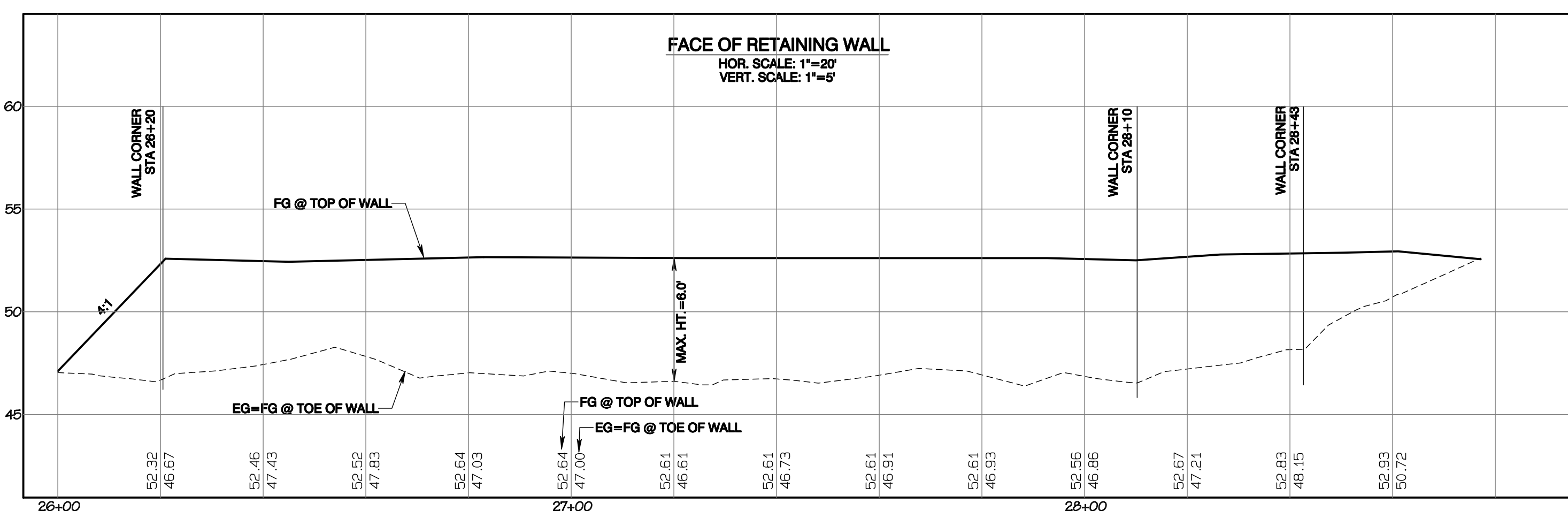
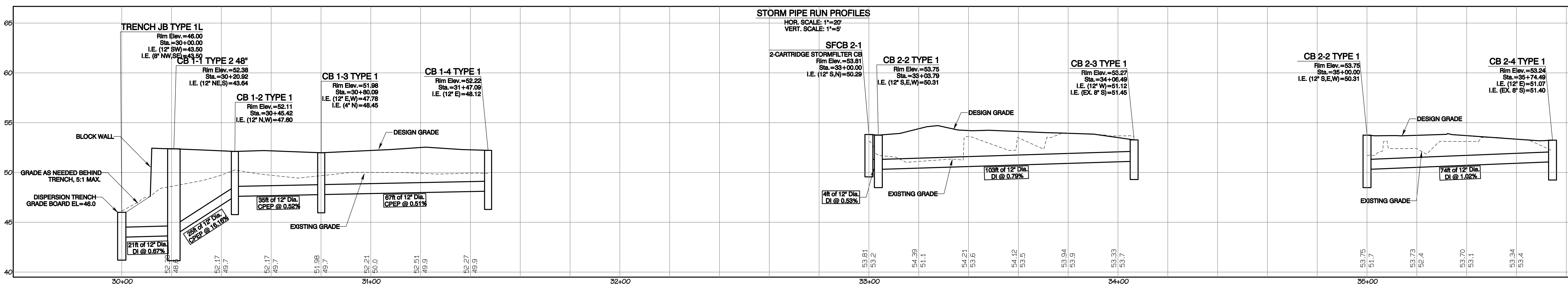
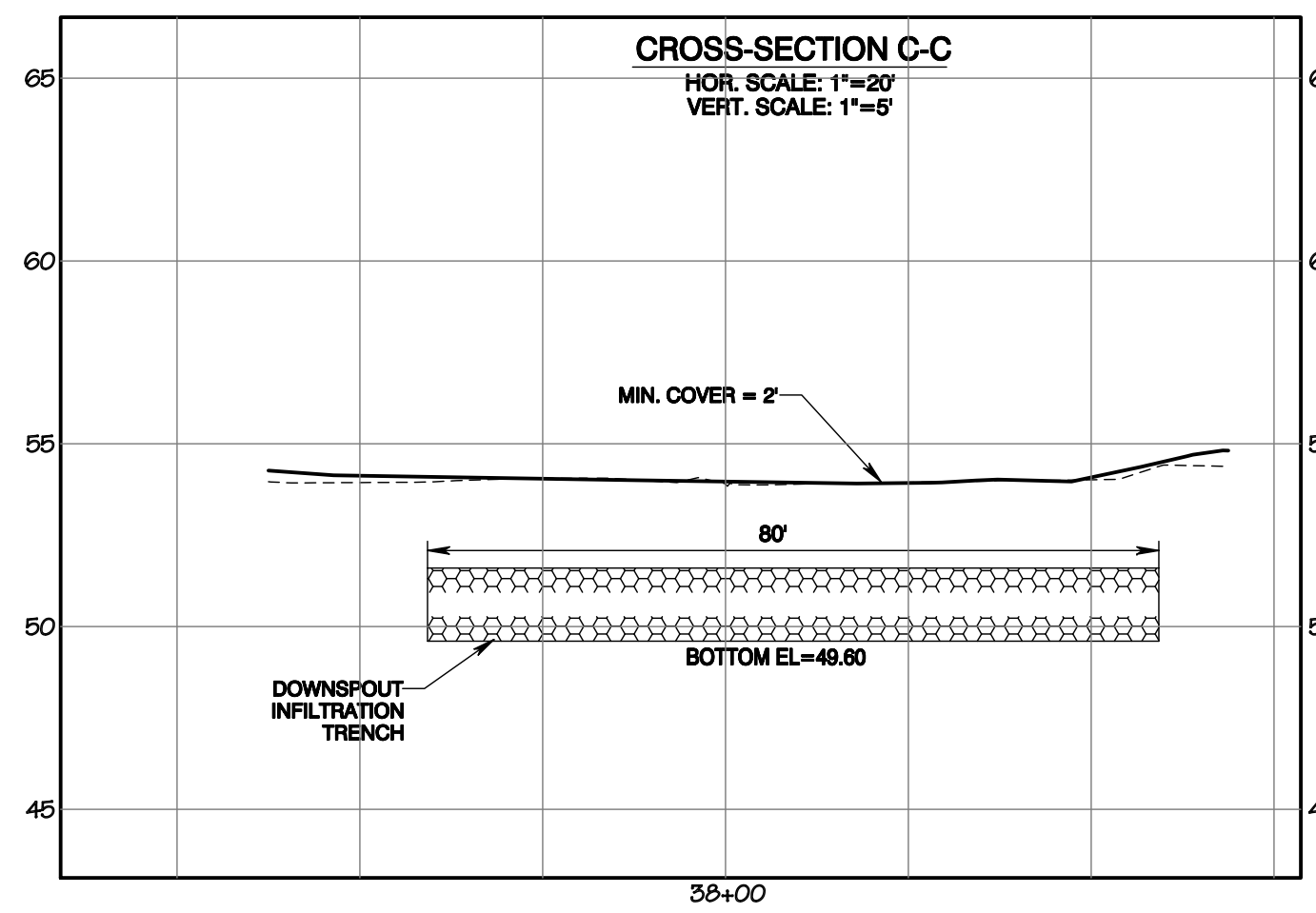
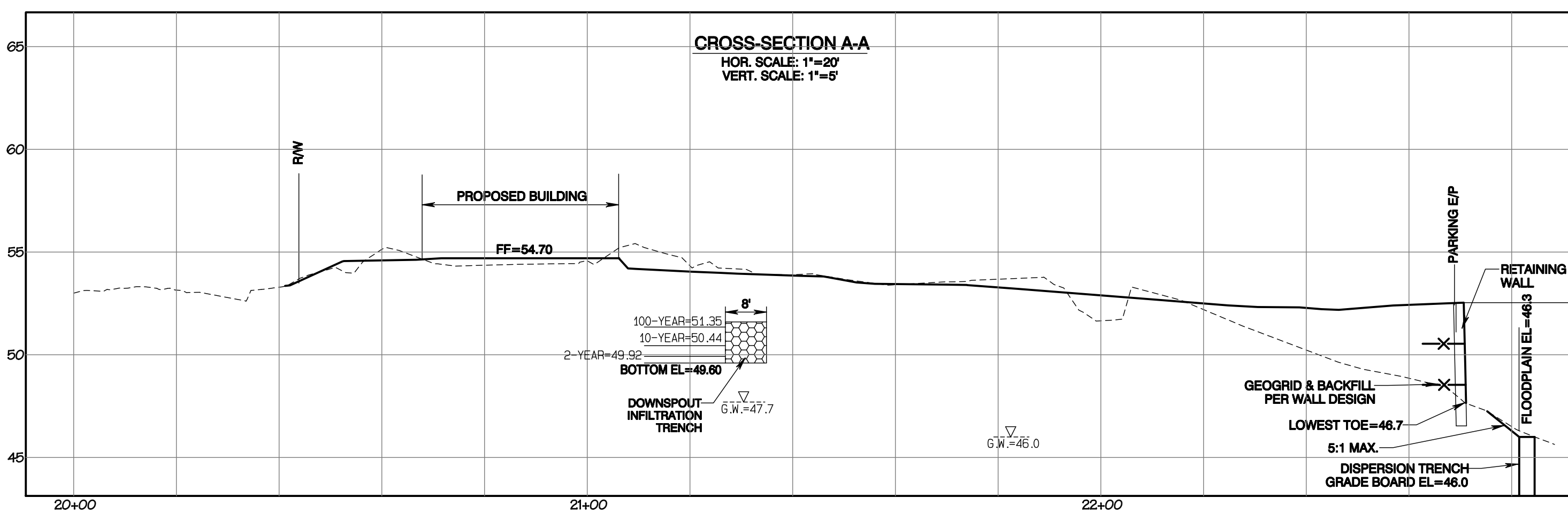
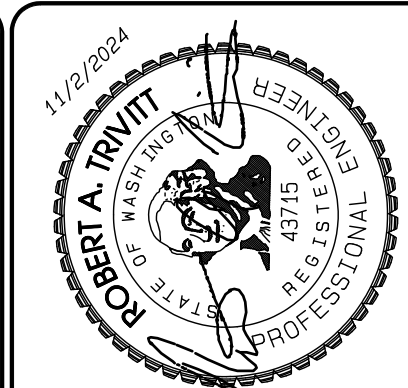
Site Plan

DRAWING
C-7
SHEET 7 OF 16

Project Desc.: Taco Time; Path: C:\Users\39355 - Taco Time\Drawings\2024-1102.dwg; Plot Date/Time: 11/22/2024 10:21:18PM

Taco Time

Section 27, Township 20 N, Range 4 E, Willamette Meridian, Pierce County, Washington



City of Puyallup
Development & Permitting Services
ISSUED PERMIT

Building	Planning
Engineering	Public Works
Fire	Traffic

APPROVED
BY: *[Signature]*
CITY OF PUYALLUP
DEVELOPMENT SERVICES
DATE: 12/13/2024

NOTE:
THIS APPROVAL IS VOID AFTER 180 DAYS FROM APPROVAL DATE.
THE CITY WILL NOT BE RESPONSIBLE FOR ERRORS AND/OR OMISSIONS ON THESE PLANS.
FIELD CONDITIONS MAY DICTATE CHANGES TO THESE PLANS AS DETERMINED BY THE ENGINEERING SERVICES MANAGER.

CALL BEFORE YOU DIG
IT IS THE LAW
CALL 811
OR
800-424-5555

Cross-Sections & Storm Profiles

Taco Time
Puyallup TT, LLC
3401 Lind Ave SW
Renton, WA, 98057
Phone 206.255.3683
Fax ron@tacoent.com

DRAWING
C-9
SHEET 9 OF 16

AZURE GREEN CONSULTANTS
+feasibility +planning +engineering +surveying
409 East Pioneer, Suite A - Puyallup, WA 98372
phone: 253.770.3144 fax: 253.770.3142

JOB NO. 2303
DATE: JULY 14, 2023
DESIGNED BY: Paul Green
DRAWN BY: Rob Trivitt
CHECKED BY: Paul Green
APPROVED BY: Paul Green

REVISION	DATE
1. Revised per City Review.	1/9/24
2. Revised per City Review. Switch to permeable pavement.	6/19/24
3. Revised per City Review.	7/17/24
4. Revised per City Review.	10/17/24
5. Revised per City Review.	
6.	
7.	
8.	
9.	
10.	

Project Desc.: Taco Time
Path: P:\urban\3935 - Taco Time\Drawings\2024-1102.dwg
Plot Date/Time: 11/2/2024 8:28:10PM