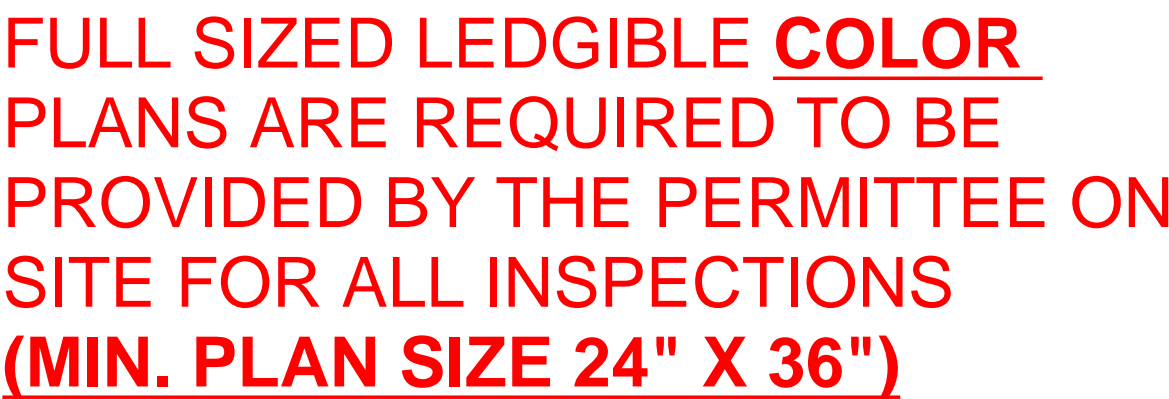


707 39th Avenue Southeast, Puyallup, Washington 98374

## SHEET INDEX

SHEET NUMBER	SHEET NAME							
		6-2-23 PERMIT SET	7-20-23 WIFI LOCATION UPDATE	10-6-23 PERMIT SET/DOH SUBMITTAL	4-4-24 COMMON AREA DATA OUTLET CHANGE	11-27-24 PROGRESS SET		
TECHNOLOGY								
T000	COVER SHEET	•	•	•	•	•		
T100N	LEVEL 0 TECHNOLOGY PLAN CARE CENTER-NORTH	•	•	•	•	•		
T100S	LEVEL 0 TECHNOLOGY PLAN CARE CENTER-SOUTH	•	•	•	•	•		
T101N	LEVEL 1 TECHNOLOGY PLAN CARE CENTER-NORTH	•	•	•	•	•		
T101S	LEVEL 1 TECHNOLOGY PLAN CARE CENTER-SOUTH	•	•	•	•	•		
T300	AUDIO/VISUAL AREA PLANS	•	•	•	•	•		
T500	UNIT PLANS	•	•	•	•	•		
T600	TECHNOLOGY DETAILS	•	•	•	•	•		
T700	TECHNOLOGY SCHEDULES	•	•	•	•	•		



<

[illegible]

A. SEE SEPARATE FLOOR PLANS FOR WIFI ACCESS POINT LOCATIONS. INSTALL ONE CAT5e CABLE TO EACH LOCATION. INSTALL OWNER FURNISHED ACCESS POINT.

1 FIELD VERIFY LOCATION OF ELEVATOR CONTROL EQUIPMENT AND ROUTE ELEVATOR PHONE CABLE ACCORDINGLY.

HEREBY CERTIFY THAT THIS PLAN SPECIFICATION  
OR REPORT WAS PREPARED BY ME OR UNDER MY  
DIRECT SUPERVISION AND THAT I AM A DULY  
LICENSED PROFESSIONAL ENGINEER UNDER THE  
LAWS OF THE STATE OF MINNESOTA  
DATE: - REG. #:

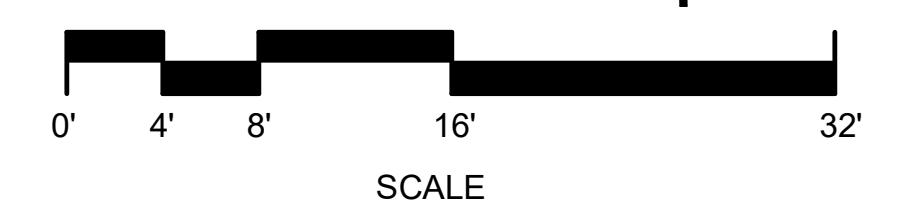
DRAWN BY: J. VERDICK  
CHECKED BY: B. MYERS

CHECKED BY: P. MYERS  
DATE: -

FILE NAME: REVIT 2022

## REVISIONS

1	6-2-23	PERMIT SET
2	7-20-23	WIFI LOCATION UPDATE
3	10-6-23	PERMIT SET/DOH SUBMITTAL
4	4-4-24	COM. AREA DATA OUT. CHANGE
5	11-27-24	PROGRESS SET



LEVEL 0 TECHNOLOGY  
PLAN CARE  
CENTER-NORTH

SCALE: 1/8" = 1'-0"

T100N

## GENERAL NOTES

A. SEE SEPARATE FLOOR PLANS FOR WIFI ACCESS POINT LOCATIONS. INSTALL ONE CAT5e CABLE TO EACH LOCATION. INSTALL OWNER FURNISHED ACCESS POINT



HEREBY CERTIFY THAT THIS PLAN SPECIFICATION  
OR REPORT WAS PREPARED BY ME OR UNDER MY  
DIRECT SUPERVISION AND THAT I AM A DULY  
LICENSED PROFESSIONAL ENGINEER UNDER THE  
LAWS OF THE STATE OF MINNESOTA  
DATE: - REG. #:

SIGNED:

DRAWN BY: J. VERDICK  
CHECKED BY: P. MYERS  
DATE: -  
JOB NUMBER:  
FILE NAME: REVIT 2022

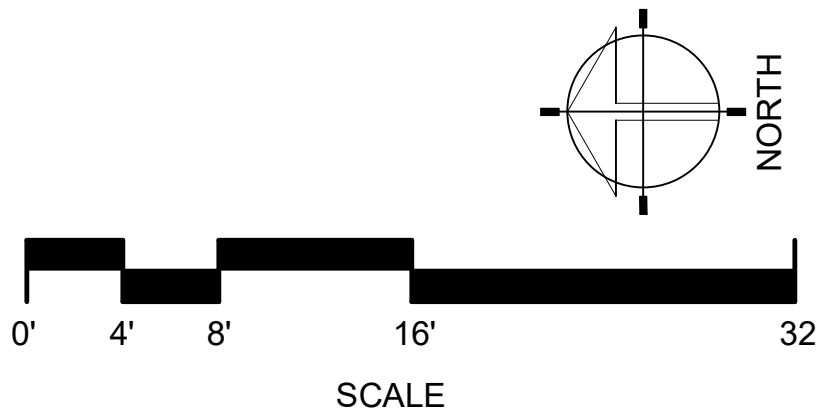
[illegible]

PHASE 2 - CARE CENTER  
707 39TH AVENUE SOUTHEAST  
PUYALLUP, WASHINGTON 98374

LEVEL 0 TECHNOLOGY  
PLAN CARE  
CENTER-SOUTH

SCALE: 1/8" = 1'-0"

# T100S



PRCNC20240424

GENERAL NOTES

A. SEE SEPARATE FLOOR PLANS FOR WIFI ACCESS POINT LOCATIONS. INSTALL ONE CAT5e CABLE TO EACH LOCATION. INSTALL OWNER FURNISHED ACCESS POINT.

NUMBERED NOTES

1. CONFIGURE DOOR CONTROLS TO RELEASE ON FIRE ALARM AND CENTRAL OVERRIDE SWITCH. CONFIGURE DOOR CONTACT TO BE SHUNTED FOR A VALID KEYPAD CODE ENTRY WITH ALARM DRY CONTACT TO BE CONNECTED TO ECALL SYSTEM WIRELESS TRANSMITTER.
2. DOOR WILL HAVE WANDERGUARD CONTROL EGRESS. COORDINATE CONTROLS WITH WANDERGUARD VENDOR.
3. OVERRIDE SWITCH TO RELEASE ALL EGRESS CONTROL DOOR LOCKS.
4. VERIFY TERMINATION PROCEDURE AND LOCATION WITH POS VENDOR. IF NO POS SYSTEM THEN TERMINATE. LABEL "FUTURE USE" AND LEAVE COILED ABOVE CEILING.
5. FURNISH AND INSTALL DEDICATED MONITOR AND IP VIDEO DECODER TO CAPTURE CCTV VIDEO.
6. FOR AUDIOVISUAL LAYOUT OF THIS AREA SEE DETAIL 2/7300.
7. FOR AUDIOVISUAL LAYOUT OF THIS AREA SEE DETAIL 1/7300.

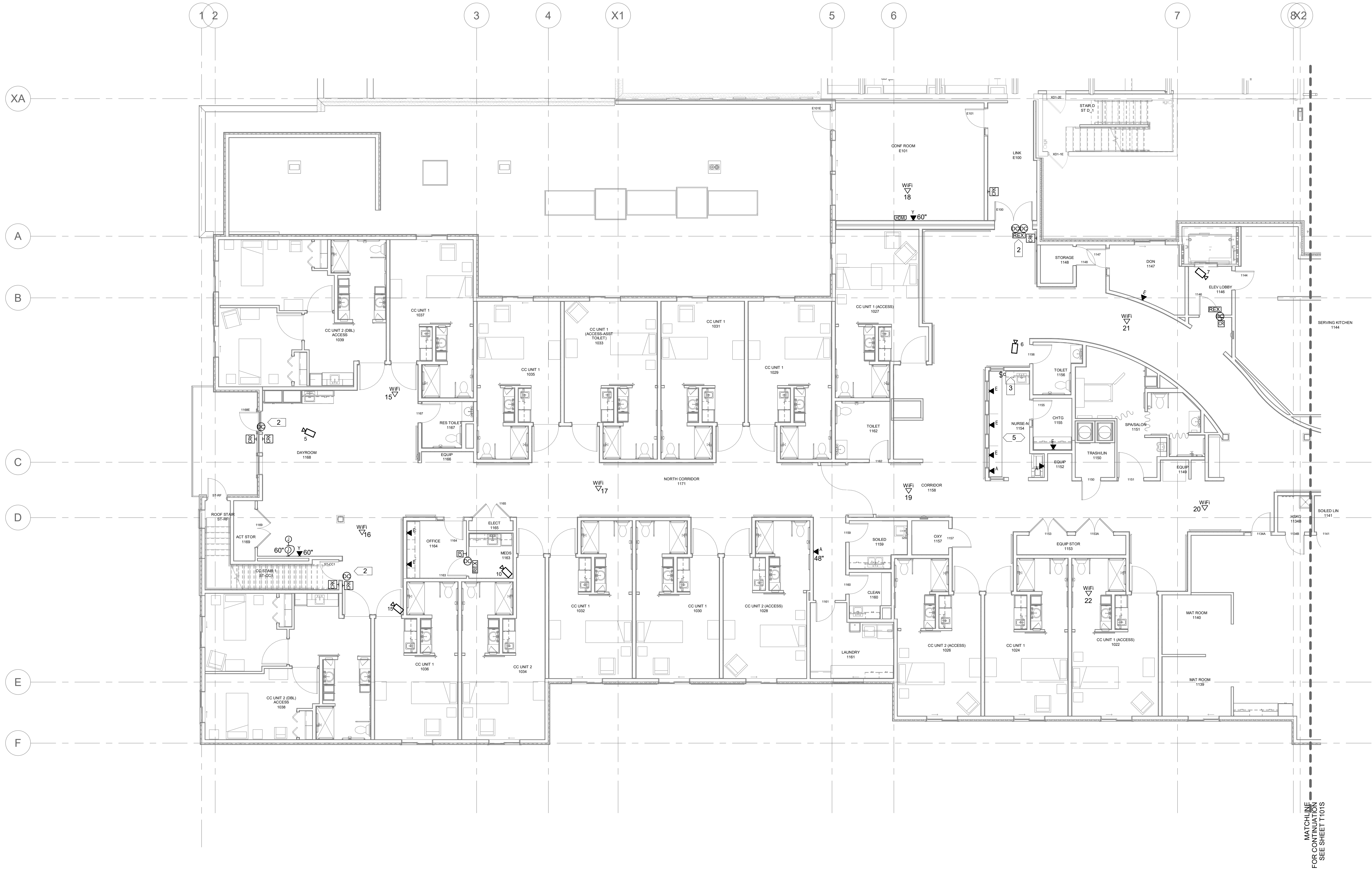
**Collins**  
ELECTRICAL + TECHNOLOGY  
278 State Street  
St. Paul, Minnesota 55107-1679  
Telephone (651) 224-2633  
Fax (651) 292-0359  
www.collinsmn.com

I HEREBY CERTIFY THAT THIS PLAN SPECIFICATION OR REPORT WAS PREPARED BY ME OR UNDER MY DIRECT SUPERVISION AND THAT I AM A DULY LICENSED PROFESSIONAL ENGINEER UNDER THE LAWS OF THE STATE OF MINNESOTA  
DATE: - REG. #:

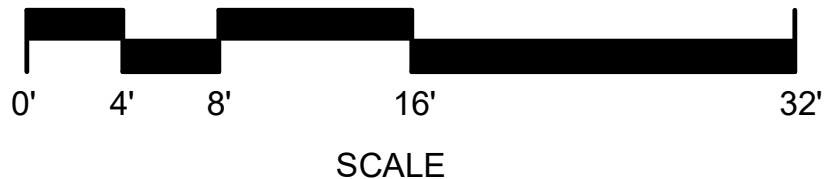
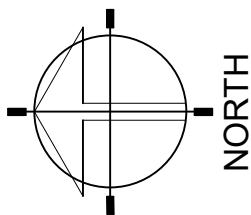
SIGNED:

DRAWN BY: J. VERDICK  
CHECKED BY: P. MYERS  
DATE: -  
JOB NUMBER: -  
FILE NAME: REVIT 2022

REVISIONS		
1	6-2-23	PERMIT SET
2	7-20-23	WIFI LOCATION UPDATE
3	10-6-23	PERMIT SET/DOH SUBMITTAL
4	4-4-24	COM. AREA DATA OUT. CHANGE
5	11-27-24	PROGRESS SET



MATCHLINE  
FOR CONTINUATION  
SEE SHEET T101S



WESLEY BRADLEY PARK 2  
PHASE 2 - CARE CENTER  
707 39TH AVENUE SOUTHEAST  
PUYALLUP, WASHINGTON 98374

LEVEL 1 TECHNOLOGY  
PLAN CARE  
CENTER-NORTH

SCALE: 1/8" = 1'-0"

T101N

A. SEE SEPARATE FLOOR PLANS FOR WIFI ACCESS POINT LOCATIONS. INSTALL ONE CAT5e CABLE TO EACH LOCATION. INSTALL OWNER FURNISHED ACCESS POINT

- 1 PUSH BUTTON FOR VESTIBULE DOOR RELEASE. INSTALL 20# 16 CABLE TO S2 ACCESS CONTROL PANEL.
- 2 PUSH BUTTON/PANIC BUTTON CONNECTED TO MONITORED BURGLAR ALARM SYSTEM. CABLE TO MAIN E.
- 3 DOOR WILL HAVE WANDERGUARD. COORDINATE CONTROLS WITH WANDERGUARD VENDOR.
- 4 CONFIGURE DOOR CONTROLS TO RELEASE ON FIRE ALARM AND CENTRAL OVERRIDE SWITCH. CONFIGURE DOOR CONTROLS TO BE SENSITIVE TO A VALID KEYPAD CODE ENTRY WITH ALARM DRY CONTACT TO BE CONNECTED TO ECALL SYSTEM WIRELESS TRANSMITTER.
- 5 OVERRIDE SWITCH TO RELEASE ALL EGRESS CONTROL DOOR LOCKS.
- 6 VERIFY TERMINATION PROCEDURE AND LOCATION WITH POS VENDOR. IF NO POS SYSTEM THEN TERMINATE. LABEL "FUTURE USE" AND LEAVE COILED ABOVE CEILING.

HEREBY CERTIFY THAT THIS PLAN SPECIFICATION  
OR REPORT WAS PREPARED BY ME OR UNDER MY  
DIRECT SUPERVISION AND THAT I AM A DULY  
LICENSED PROFESSIONAL ENGINEER UNDER THE  
LAWS OF THE STATE OF MINNESOTA  
DATE: - REG. #: -

DRAWN BY: J. VERDICK

CHECKED BY: P. MYERS  
DATE:

DATE: -  
JOB NUMBER:

FILE NAME: REVIT 2022

REVISIONS		
1	6-2-23	PERMIT SET
2	7-20-23	WIFI LOCATION UPDATE
3	10-6-23	PERMIT SET/DOH SUBMITTAL
4	4-4-24	COM. AREA DATA OUT. CHANGE
5	11-27-24	PROGRESS SET

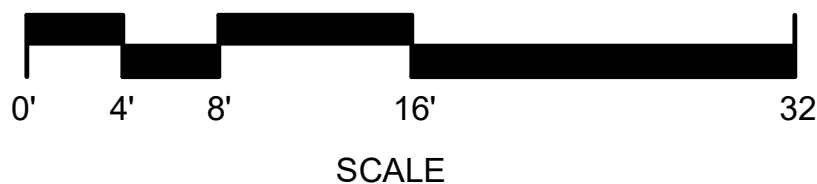
[illegible]

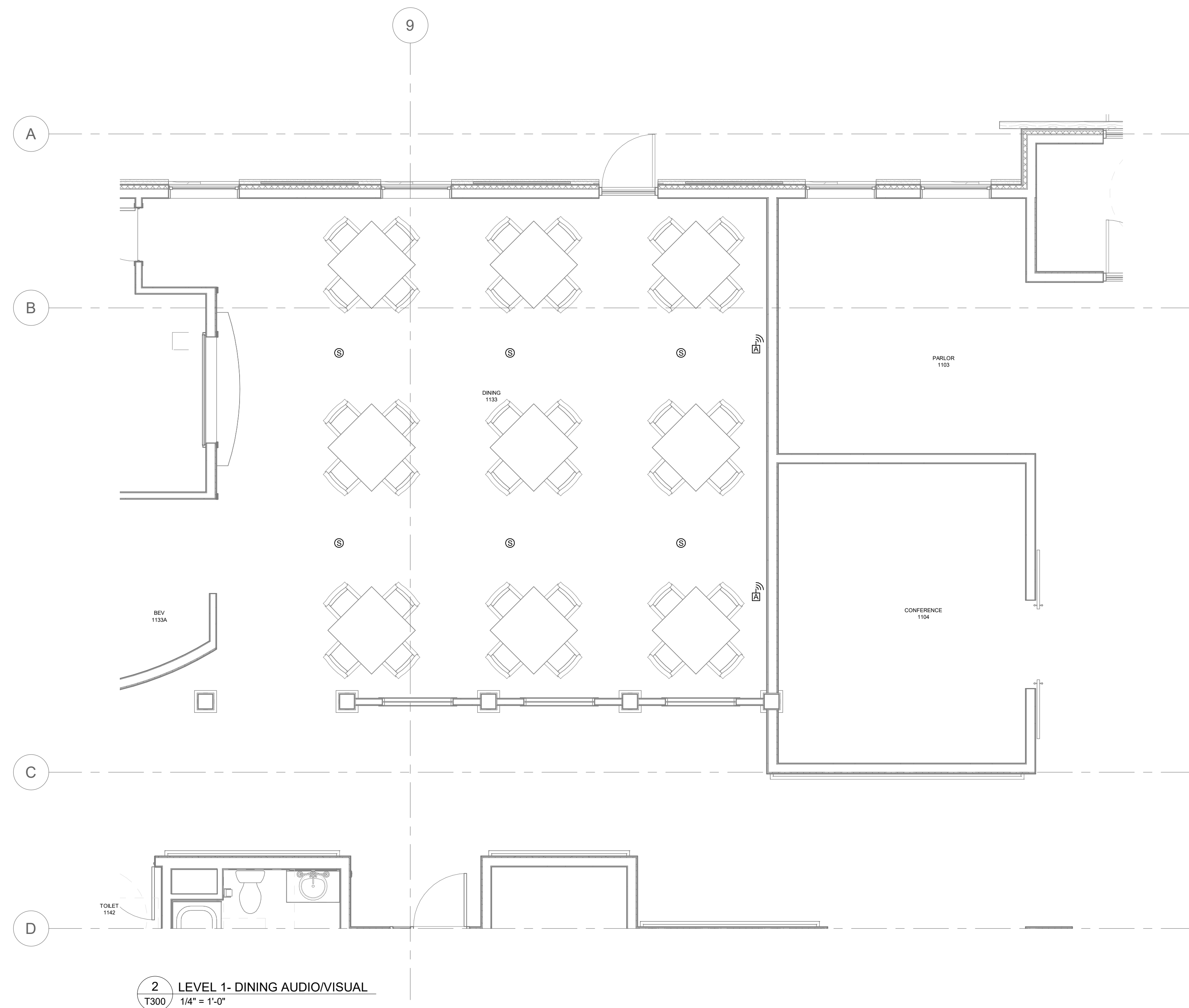
**WESLEY BRADLEY PARK 2**  
**PHASE 2 - CARE CENTER**  
**707 39TH AVENUE SOUTHEAST**  
**PUYALLUP, WASHINGTON 98374**

LEVEL 1 TECHNOLOGY  
PLAN CARE  
CENTER-SOUTH

SCALE: 1/8" = 1'-0"

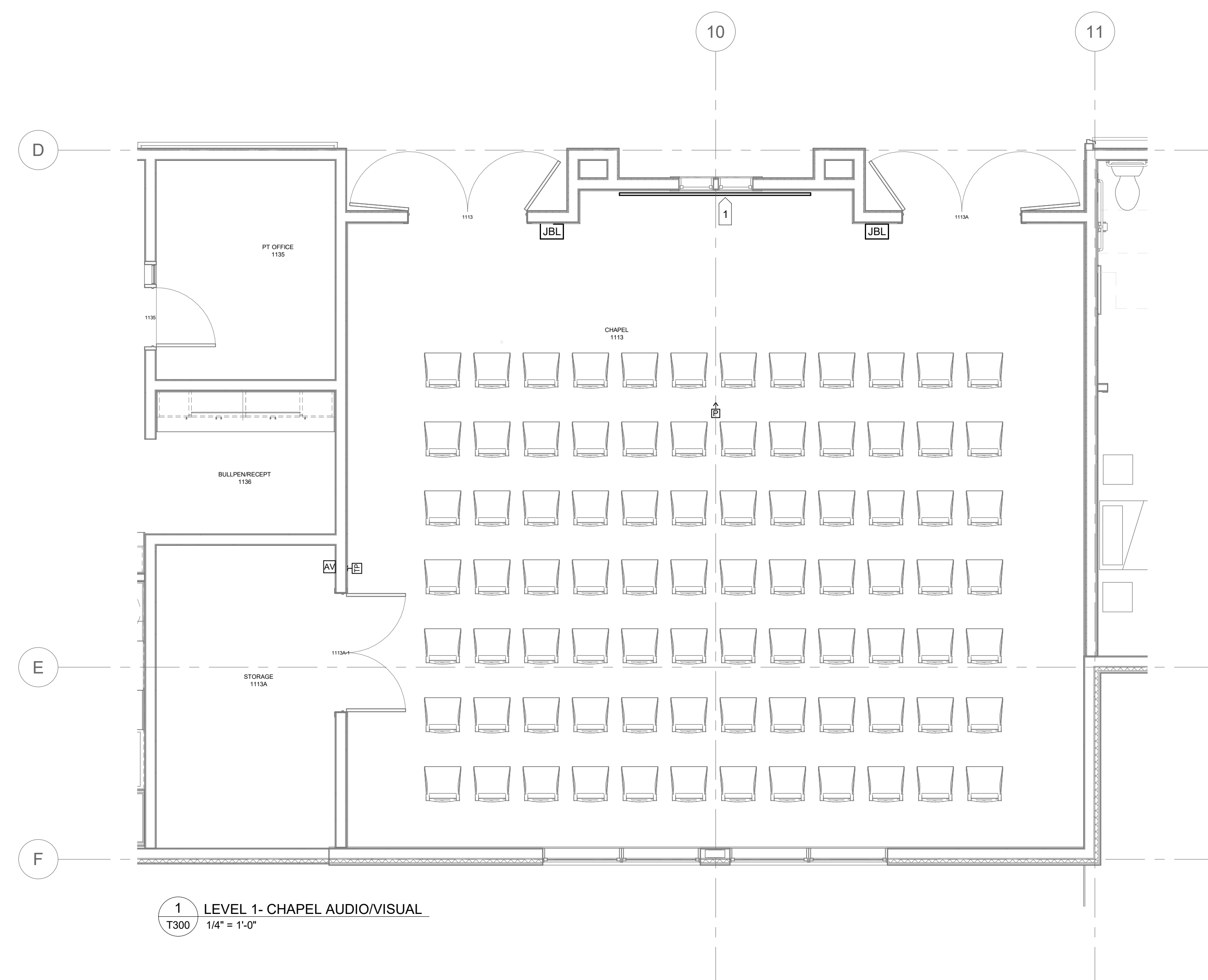
# T101S





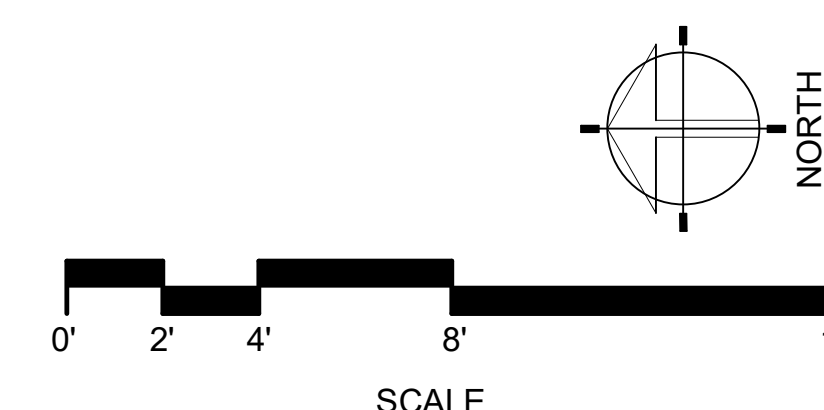
## NUMBERED NOTES

1 ELECTRIC MOTORIZED PROJECTION SCREEN IN SOFFIT ABOVE WINDOWS



1 LEVEL 1- CHAPEL AUDIO/VISUAL  
T300 1/4" = 1'-0"

AUDIO/VISUAL EQUIPMENT LIST-WESLEY BRADLEY PARK PHASE 2 - 11-27-24 PROGRESS SET			
Qty per Room	Manufacturer	Model #	Description
<b>CHAPEL</b>			
1	Panasonic	PT-VMZ71U7	7000L WUXGA Laser Projector
1	Chief	RPMAUW	Projector ceiling mount
1	Chief		Pipe and ceiling mount hardware (field verify)
1	Dalite	20892L	65"X104" 123" wall mounted electric screen
1	Audix	AP6 C2BP	Dual Reciever with Handeld and body pack
1	Audix	HT7BG3P	Headworn Mic
2	JBL	CBT 50LA-1	Line array column speaker
2	JBL	MTC-CBT-FM	Flush wall mount
1	Binary	B-260-HDMI-2A	Audio extractor
1	RTI	KA8	8" Touch screen
1	Atlona	AT-HDR-EX-100CEA-RX	HDMI Extender TX,RX
<b>DINING</b>			
6	Sonance	PS-C63RT	Pro Series in-ceiling speaker
1	Sonance	PS-C6R	Metal Rough in bracket (qty 6)
1	Audix	AP62 C2BP	Dual Reciever with Handeld and body pack
1	Audix	HT7BG3P	Headworn Mic
1	Audix	ANTDA4161	Active Directional Antennae
<b>A/V RACK</b>			
1	Strong	SR-WMS-16U	16RU Wall rack
1	LEA	Connect 352	2ch 2x350 amp
1	Symetrix	Jupiter 12	12x4 DSP
1	RTI	XP-8	XP Based Processor
1		TBD	Network switch
1	Atlona	AC-MX-42	4x2 HDMI Switcher



**Collins**  
**ELECTRICAL + TECHNOLOGY**  
278 State Street  
St. Paul, Minnesota 55107-1679  
Telephone (651) 224-2833  
Fax (651) 292-0359  
[www.collinsmn.com](http://www.collinsmn.com)

I HEREBY CERTIFY THAT THIS PLAN SPECIFICATION  
OR REPORT WAS PREPARED BY ME OR UNDER MY  
DIRECT SUPERVISION AND THAT I AM A DULY  
LICENSED PROFESSIONAL ENGINEER UNDER THE  
LAWS OF THE STATE OF MINNESOTA  
DATE: - REG. #:

SIGNED:

DRAWN BY: J. VERDICK

CHECKED BY: P. MYERS  
DATE: .

JOB NUMBER:

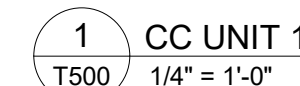
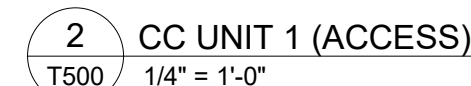
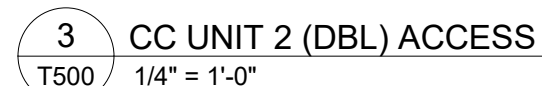
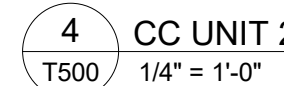
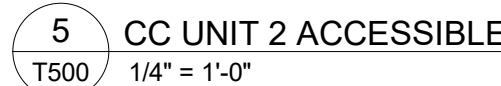
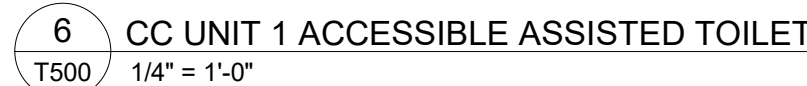
FILE NAME: REVIT 2022
REVISIONS

REVISIONS		
1	6-2-23	PERMIT SET
2	7-20-23	WIFI LOCATION UPDATE
3	10-6-23	PERMIT SET/DOH SUBMITTAL
4	4-4-24	COM. AREA DATA OUT. CHANGE
5	11-27-24	PROCESS SET

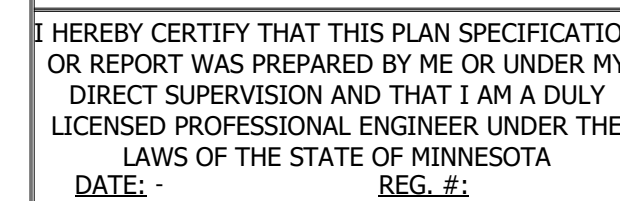
WESLEY BRADLEY PARK 2  
PHASE 2 - CARE CENTER  
707 39TH AVENUE SOUTHEAST  
PUYALLUP, WASHINGTON 98374

AUDIO/VISUAL AREA  
PLANS

# T300



A. ALL CABLES FOR CC TYPE UNITS ARE HOMERUNS TO THE TELECOM ROOM.



SIGNED:

DRAWN BY: J. VERDICK  
CHECKED BY: P. MYERS  
DATE: -  
JOB NUMBER:  
FILE NAME: REVIT 2022

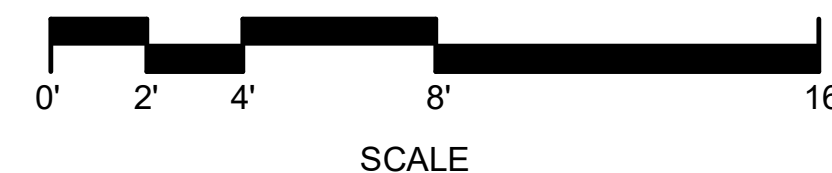
[illegible]

WESLEY BRADLEY PARK 2  
PHASE 2 - CARE CENTER  
707 39TH AVENUE SOUTHEAST  
PUYALLUP, WASHINGTON 98374

UNIT PLANS

SCALE: 1/4" = 1'-0"

# T500





- A - 6 STRAND SM FIBER  
B - 6 STRAND OM3 FIBER  
C - 12 STRAND OM3 FIBER  
D - 100 PAIR COPPER  
E - 50 PAIR COPPER  
F - RG11 COAX

## 1 RISER DIAGRAM

- ## NOTES

1. INCLUDE LIGHTNING/SURGE PROTECTED BUILDING ENTRANCE PROTECTION ON BOTH ENDS OF CABLE.
2. COORDINATE WITH LOCAL CABLE TV PROVIDER FOR THEIR INSTALLATION OF BACKBONE SERVICE CABLES BETWEEN BUILDINGS



GENERAL NOTES:

- A. TERMINATE DATA JACKS TO T568A PINOUT CONFIGURATION.
- B. ALL FACEPLATES SHALL BE CLEARLY LABELED INDICATING ROOM NUMBER. REVIEW LABELING SCHEME WITH OWNERS REPRESENTATIVE PRIOR TO PROCEEDING.



#### 4 DATA PATCH PANEL AND WALL RACK DETAIL



- A. TERMINATE ALL STATION COAXIAL CABLES WITH RADIAL CRIMP STYLE F-CONNECTORS, LAND ON PATCH PANEL AND LABEL WITH UNIT NUMBER.
- B. TERMINATE, LABEL AND COIL RG11 RISER COAXIAL CABLES ON WALL ADJACENT TO PATCH PANEL.

3 TV PATCH PANEL

- T600

SIGNED

DRAWN BY: J. VERDICI

CHECKED BY: *P. MYERS*

DATE: -  
JOB NUMBER: -

JOB NUMBER:  
FILE NAME: BEVIT 2022

## REVISION

[illegible]

**WESLEY BRADLEY PARK 2**  
PHASE 2 - CARE CENTER  
707 39TH AVENUE SOUTHEAST  
PUYALLUP, WASHINGTON 98374

## TECHNOLOGY DETAILS

# T600

CCTV SCHEDULE-WESLEY HOMES-BRADLEY PARK PHASE 2-CARE CENTER - 11-24-27 PROGRESS SET					
Camera #	Location	Resolution	Manufacturer	Model	Notes
1	Spa exterior door				
2	Pool exterior door				
3	Staff patio door				
4	Stair B LL exterior door				
5	N exterior door				
6	Link Door				
7	Elevator Lobby				
8	Vestibule				
9	Outdoor Drive up area				Outdoor camera
10	Med Room 1163				
11	Dining Exterior Door				
12	Reception Lobby				
13	Med Room 1126				
14	SE Exterior Door				
15	Stair 1 1st Floor Corridor door				
16	Dayroom Exterior door				

Pixels Per Foot (PPF)	
30	Visual
45	License plate
100	Facial

Class	Resolution	Pixels
VGA	640x480	307200
HDTV 720p	1280x720	921600
1.3 MP	1280x1024	1310720
HDTV 1080p	1920x1080	2073600
2MP	1600x1200	1920000
3MP	2048x1536	3145728
5MP	2592x1944	5038848
10MP	3648x2752	10039296

DOOR SECURITY SCHEDULE-WESLEY HOMES-BRADLEY PARK PHASE 2-CARE CENTER - 11-27-24 PROGRESS SET														
Door	Description	Keypad/ Prox reader	Proximity Reader	Motion REX	Hardware REX	Door Contact	Electric Strike	Intercom	Electric Lock	Transfer Hinge	Mag Lock	Mag Lock	Fire Release	Installation Note
0108	Pool Door		1	1		1			1	1				
0108BE	Spa to outdoor fitness		1		1	1			1	1				
0108E	Pool to outdoor fitness		1		1	1			1	1				
0119E	Staff Patio		1		1	1			1	1				
1100	Vestibule	1	1		2	2		1	2	2				4
1114E	SE exterior door	2				1			1	1	1		1	4
1126	Med Room		1		1	1	1		1	1				
1129E	Dayroom	2				1			1	1	1		1	4
1133E	Dining Room			1		1								3
1134	Therapy		1		1	1								
1146	Elevator Lobby		1		1	1	1		1	1				
1163	Med Room		1		1	1	1		1	1				
1168E	N exterior door	2				1			1	1	1		1	4
E100	Link Door	2				2			2	2	1		1	1, 4
ST-CC0E	CC Stair B lower level exterior		1		1	1			1	1				
ST-CC1	CC Stair level 1 N corridor	2				1					1		1	4

Installation notes	
Note 1	Integrate reader controls with motorized door operator. Door operator to release strike when exit paddle used. Enter paddle disabled until after a valid fob read.
Note 2	Wire push button at reception desk to release door lock
Note 3	Exit only door. Configure access control system to report door forced and door propped events.
Note 4	Door will have Wanderguard. Coordinate reader controls with Wanderguard vendor installation.
Note 5	
Note 6	



I HEREBY CERTIFY THAT THIS PLAN SPECIFICATION OR REPORT WAS PREPARED BY ME OR UNDER MY DIRECT SUPERVISION AND THAT I AM A DULY LICENSED PROFESSIONAL ENGINEER UNDER THE LAWS OF THE STATE OF MINNESOTA

DATE: - REG. #:

SIGNED:

DRAWN BY: J. VERDICK  
CHECKED BY: P. MYERS  
DATE: -  
JOB NUMBER:  
FILE NAME: REVIT 2022

[illegible]

**WESLEY BRADLEY PARK 2**  
**PHASE 2 - CARE CENTER**  
**707 39TH AVENUE SOUTHEAST**  
**PUYALLUP, WASHINGTON 98374**

## TECHNOLOGY SCHEDULES

# T700