



Submittal Data Sheet

Daikin Polara 2.5-Ton Wall Mounted Heat Pump System

FTX30WVJU9RX30WMVJU9

PRMH20250190

City of Puyallup Development & Permitting Services ISSUED PERMIT			
Building	Planning		
Engineering	Public Works		
Fire	Traffic		

FEATURES

- Auto Changeover
- Powerful Operation Mode Econo Mode Program Dry Function Intelligent Eye Auto Fan Speed Wide Angle Louvers Dual Flap System Comfort Mode 3-D Airflow Low Ambient Cooling Quiet indoor and outdoor unit operation Auto Changeover and auto restart Self Diagnosis"

BENEFITS

- "For rooms with no false ceiling nor free floor space 10-year parts limited warranty for residential/commercial applications Cooling operation down to -22 F outside temperature Error codes display for fast and easy fault diagnosis Long lasting Titanium Apatite air filter Easy to clean flat panels Econo mode reduces power consumption."

INDOOR UNIT



OUTDOOR UNIT



**Submittal Data Sheet**

Daikin Polara 2.5-Ton Wall Mounted Heat Pump System

FTX30WVJU9RX30WMVJU9

SYSTEM PERFORMANCE

Indoor Unit Model No.	FTX30WVJU9	Indoor Unit Name:	Daikin POLARA 2.5T Wall Mounted Type IDU
Outdoor Unit Model No.	RX30WMVJU9	Outdoor Unit Name:	Daikin POLARA 2.5-Ton, Heat Pump, Ductless ODU
Rated Cooling Capacity (Btu/hr):	31,400	Rated Cooling Conditions:	Indoor (°F DB/WB): 80 / 67 Ambient (°F DB/WB): 95 / 75
Sensible Capacity (Btu/hr):	31,400	Rated Piping Length(ft):	25
Max/Min Cooling Capacity (Btu/hr):	31,400 / 10,200	Rated Height Difference (ft):	0.00
Cooling Input Power (kW):			
SEER2 (Non-Ducted/Ducted):	17.50 /	HSPF2 (Non-Ducted/Ducted):	7.5 /
EER2 (Non-Ducted/Ducted):	9.85 /	Heating COP (Non-Ducted/Ducted):	2.9 /
Rated Heating Capacity (Btu/hr):	34,800	Rated Heating Conditions:	Indoor (°F DB/WB): 70 / 60 Ambient (°F DB/WB): 47 / 43
Max/Min Heating Capacity (Btu/hr):	34,800 / 10,200		

SYSTEM DETAILS

Refrigerant Type:	R-410A	Cooling Operation Range (°F DB):	50 - 114
Holding Refrigerant Charge (lbs):	3.64	Heating Operation Range (°F WB):	5 - 64
Additional Charge (lb/ft):	0.32	Max. Pipe Length (Vertical) (ft):	66
Pre-charge Piping (Length) (ft):	33	Cooling Range w/Baffle (°F DB):	-22 - 115
Max. Pipe Length (Total) (ft):	99		
Max Height Separation (Ind to Ind ft):	0		



Submittal Data Sheet

Daikin Polara 2.5-Ton Wall Mounted Heat Pump System

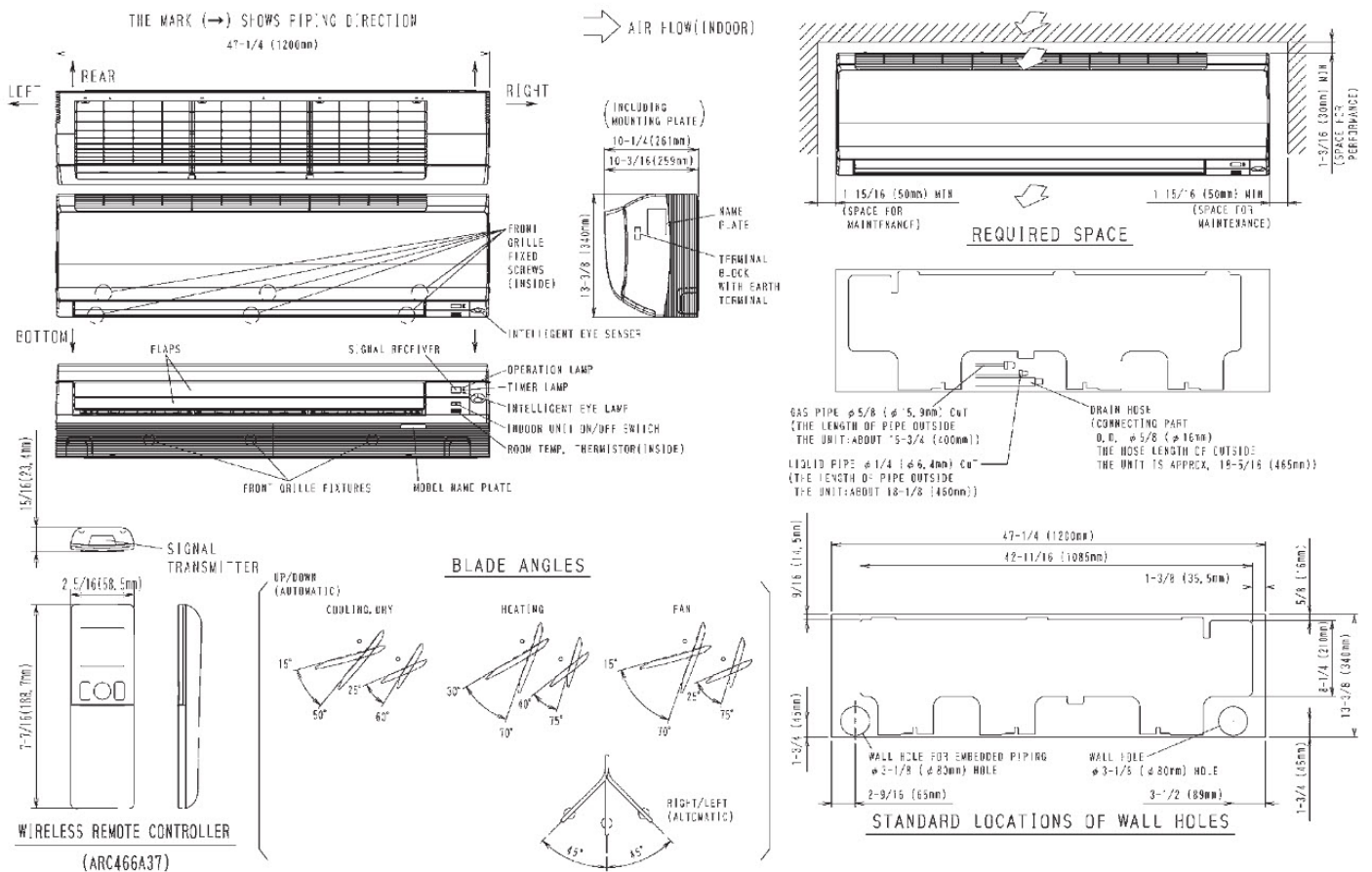
FTX30WVJU9RX30WMVJU9

INDOOR UNIT DETAILS

Power Supply (V/Hz/Ph):	208/230 / 60 / 1	Airflow Rate (H/M/L/SL) (CFM):	890/727/572/512
Power Supply Connections:		Moisture Removal (Gal/hr):	
Min. Circuit Amps MCA (A):		Gas Pipe Connection (inch):	5/8
Max Overcurrent Protection (MOP) (A):		Liquid Pipe Connection (inch):	1/4
Dimensions (HxWxD) (in):	13-3/8 x 47-1/4 x 10-3/16	Condensate Connection (inch):	
Net Weight (lb):	38	Sound Pressure (H/M/L/SL) (dBA):	53/47/40/37
Ext. Static Pressure (Rated/Max) (inWg):	/	Sound Power Level (dBA):	

DIMENSIONAL DRAWING - INDOOR UNIT

FTX30/36WVJU9





Submittal Data Sheet

Daikin Polara 2.5-Ton Wall Mounted Heat Pump System

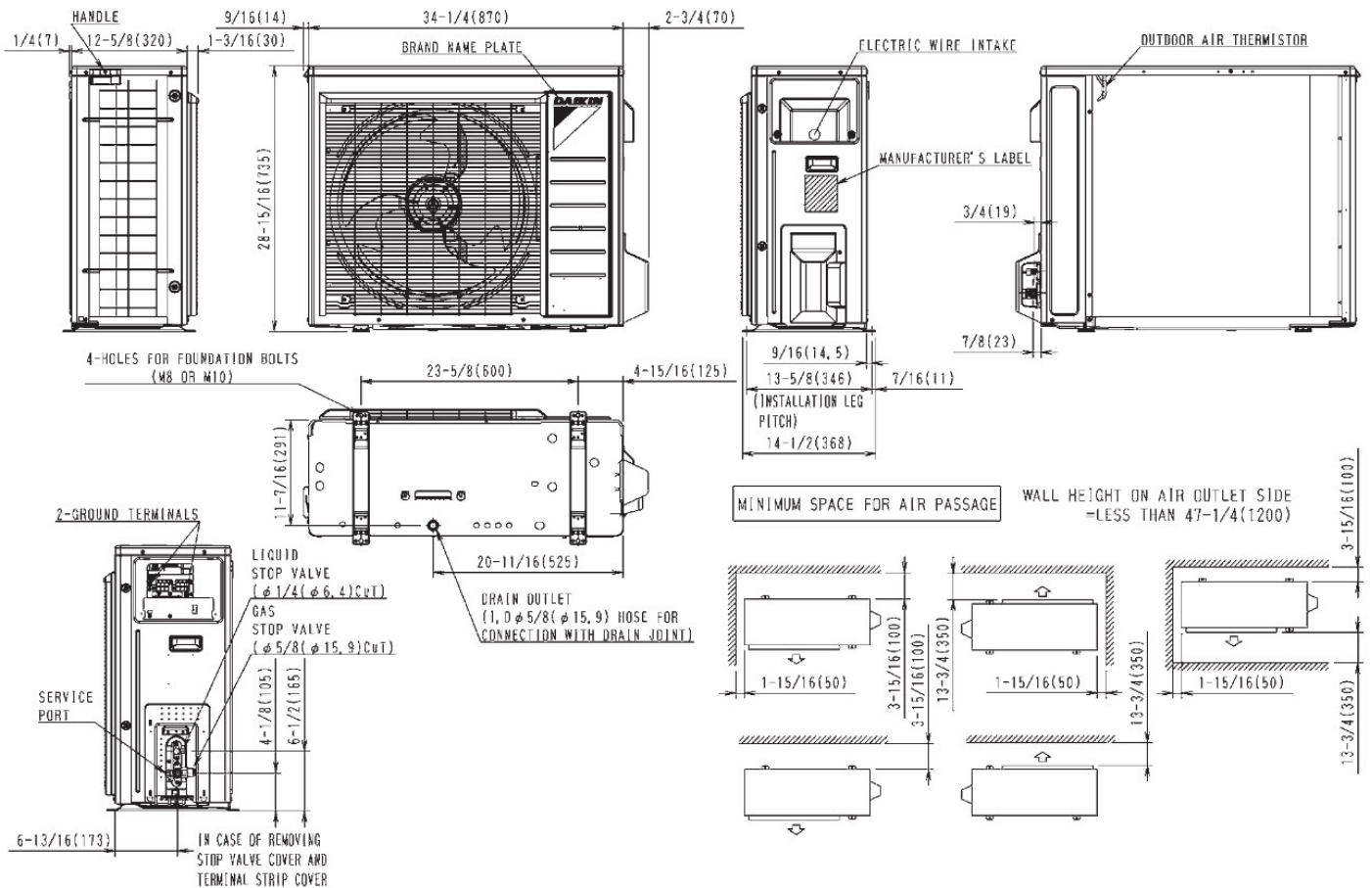
FTX30WVJU9RX30WMVJU9

OUTDOOR UNIT DETAILS

Power Supply (V/Hz/Ph):	208/230 / 60 / 1	Compressor Stage:	Inverter
Power Supply Connections:	1, 2, 3, Ground	Capacity Control Range (%):	-
Min. Circuit Amps MCA (A):	18.6	Airflow Rate (H) (CFM):	2528
Max Overcurrent Protection (MOP) (A):	20	Gas Pipe Connection (inch):	5/8
Max Starting Current MSC(A):		Liquid Pipe Connection (inch):	1/4
Rated Load Amps RLA(A):	18.3	Sound Pressure (H) (dBA):	56
Dimensions (HxWxD) (in):	28-15/16 x 34-1/4 x 12-5/8	Sound Power Level (dBA):	
Net Weight (lb):	133		

DIMENSIONAL DRAWING - OUTDOOR UNIT

RK30/36WMVJU9, RX30/36WMVJU9





Submittal Data Sheet

Daikin Polara 2.5-Ton Wall Mounted Heat Pump System

FTX30WVJU9RX30WMVJU9

INDOOR ACCESSORIES

PART NUMBER	DESCRIPTION	INCLUDED
-------------	-------------	----------

AZAI6WSCDKB	DKN Residential Cloud Wi-Fi Adaptor for Single- and Multi-Zone System (S21)	No
AZAI6WSPDKC	DKN Plus Interface	No
BRC944B2-A08	Wired Remote Controller kit	No
BRCW901A03	BRC944B2 CONTROL CABLE, 10FT	No
BRCW901A08	Wired Remote Controller Cord - 8m/26ft	No
BRP072A43	Daikin Comfort Control WiFi Adaptor	No
DACA-CP1-1	Mini Aqua Condensate Pump	No
DACA-CP4-1	MINI WHITE PUMP KIT 100-250V	No
DTST-LTE-LA-A	Daikin One Lite (with Translation Adaptor for S21 only)	No
DTST-ONE-ADA-A	Daikin One+ Smart Thermostat for VRV, SkyAir, Single- and Multi-Zone System	No
KRP928BB2S	RA Interface Adaptor for DIII-Net -	No

OUTDOOR ACCESSORIES

PART NUMBER	DESCRIPTION	INCLUDED
-------------	-------------	----------

DACA-WB-3	Powder-Coated Wall-Mounted Bracket	No
KEH063A4E	Daikin BML DrainPan Heater Large	No
KKG063A42	Back protection wire net	No
KPS063A41	Snow hood (intake side plate) (15, 18 & 24)	No
KPS063A44	Snow hood (intake rear plate) (15,18 & 24)	No
KPS063A47	Snow hood (outlet) (15, 18 & 24)	No
KPW063B4	Air direction adjustment grille	No
RAQAHLGD1	Rear Coil Guard BML	No



Submittal Data Sheet

R-32 --- 1.5-Ton Wall Mounted Daikin OTERRA Heat Pump System

FTXF18AXVJU-RXF18AXVJU

FEATURES

- Daikin Swing Compressor
- Indoor Quiet Operation
- Included Handheld Remote
- Titanium Apatite Air-Purifying Filter
- Anti-corrosion Treatment of Outdoor Heat Exchanger

BENEFITS

- Precharged Line set - 33 ft
- Cooling Operation Range - 50-115F
- Heating Operation Range - 5-65F
- 12 Year Parts and Compressor Registered Residential Warranty
- 5 year Parts and Compressor Commercial Warranty
- R-32 Easy, Proven, Efficient, Available
- Facilities Cooling to -4F - See installation manual

INDOOR UNIT



OUTDOOR UNIT



**Submittal Data Sheet**

R-32 --- 1.5-Ton Wall Mounted Daikin OTERRA Heat Pump System

FTXF18AXVJU-RXF18AXVJU

SYSTEM PERFORMANCE

Indoor Unit Model No.	FTXF18AXVJU	Indoor Unit Name:	R-32 --- 1.5- Ton, Heat Pump, Wall Mounted IDU Daikin OTERRA
Outdoor Unit Model No.	RXF18AXVJU	Outdoor Unit Name:	R-32 --- 1.5 Ton, Heatpump, Ductless, ODU Daikin OTERRA
Rated Cooling Capacity (Btu/hr):	18,100	Rated Cooling Conditions:	Indoor (°F DB/WB): 80 / 67 Ambient (°F DB/WB): 95 / 75
Sensible Capacity (Btu/hr):	14,120	Rated Piping Length(ft):	25
Max/Min Cooling Capacity (Btu/hr):	22,000 / 6,900	Rated Height Difference (ft):	0.00
Cooling Input Power (kW):	5.300	Heating Input Power (kW):	6.33
SEER2 (Non-Ducted/Ducted):	21.00 /	HSPF2 (Non-Ducted/Ducted):	9.6 /
EER2 (Non-Ducted/Ducted):	12.00 /	Heating COP (Non-Ducted/Ducted):	3.6 /
Rated Heating Capacity (Btu/hr):	21,600	Rated Heating Conditions:	Indoor (°F DB/WB): 70 / 60 Ambient (°F DB/WB): 47 / 43
Max/Min Heating Capacity (Btu/hr):	26,400 / 5,800		

SYSTEM DETAILS

Refrigerant Type:	R-32	Cooling Operation Range (°F DB):	50 - 122
Holding Refrigerant Charge (lbs):	3.31	Heating Operation Range (°F WB):	5 - 65
Additional Charge (oz/ft):	0.18	Max. Pipe Length (Vertical) (ft):	66
Pre-charge Piping (Length) (ft):	33	Cooling Range w/Baffle (°F DB):	-4 - 122
Max. Pipe Length (Total) (ft):	99		
Max Height Separation (Ind to Ind ft):	0		



Submittal Data Sheet

R-32 --- 1.5-Ton Wall Mounted Daikin OTERRA Heat Pump System

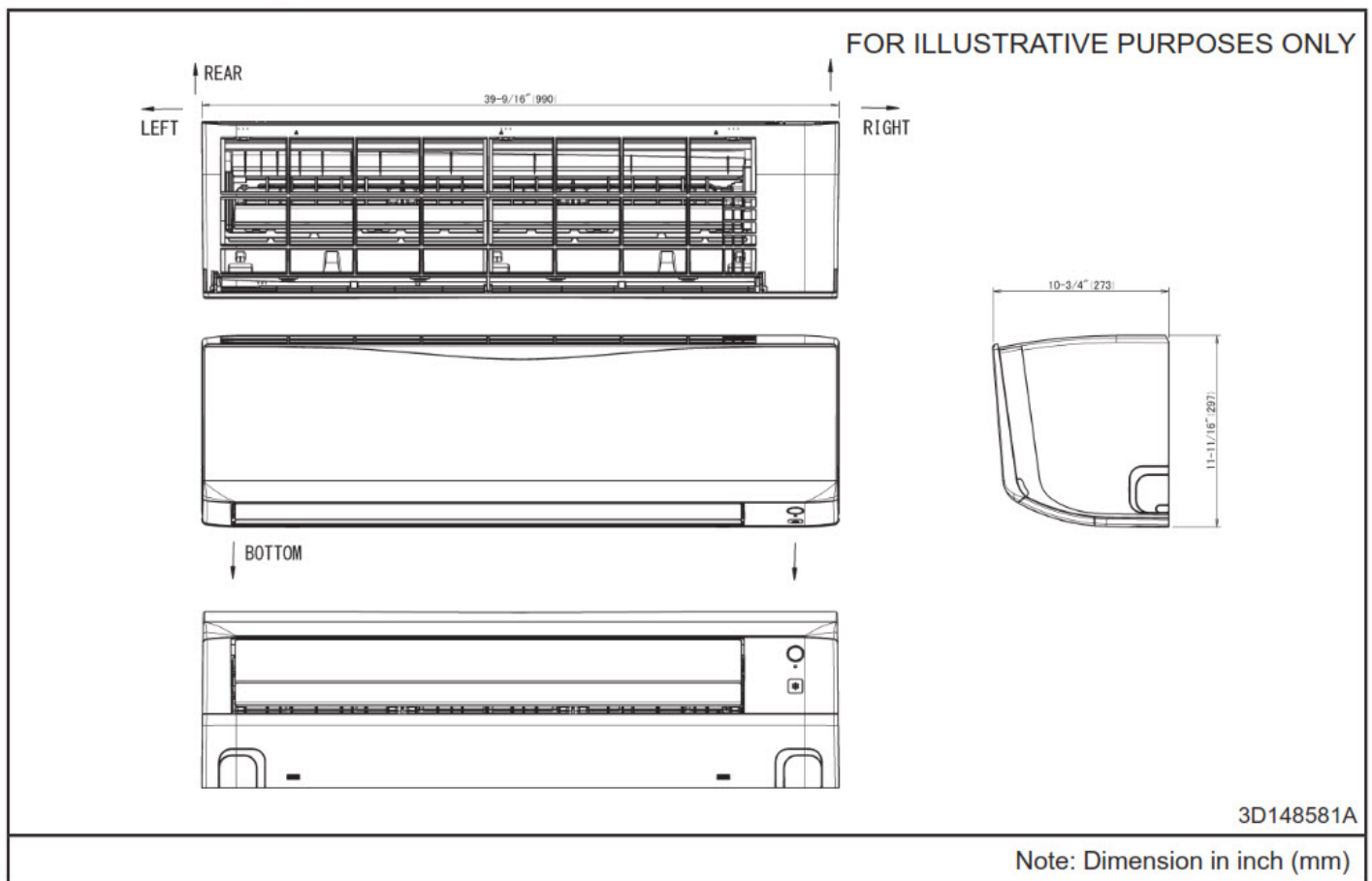
FTXF18AXVJU-RXF18AXVJU

INDOOR UNIT DETAILS

Power Supply (V/Hz/Ph):	208-230 / 60 / 1	Airflow Rate (HH/HM/L/SL) (CFM):	754/716/605/467/395
Power Supply Connections:	L1, L2, L3, Ground	Moisture Removal (Gal/hr):	0.6
Min. Circuit Amps MCA (A):		Gas Pipe Connection (inch):	1/2
Max Overcurrent Protection (MOP) (A):		Liquid Pipe Connection (inch):	1/4
Dimensions (HxWxD) (in):	11-11/16 x 39-9/16 x 10-3/4	Condensate Connection (inch):	5/8
Net Weight (lb):	30.5	Sound Pressure (H/M/L/SL) (dBA):	49/44/38/33
Ext. Static Pressure (Rated/Max) (inWg):	/	Sound Power Level (dBA):	

DIMENSIONAL DRAWING - INDOOR UNIT

Model : FTKF18/24A, FTXF18/24A





Submittal Data Sheet

R-32 --- 1.5-Ton Wall Mounted Daikin OTERRA Heat Pump System

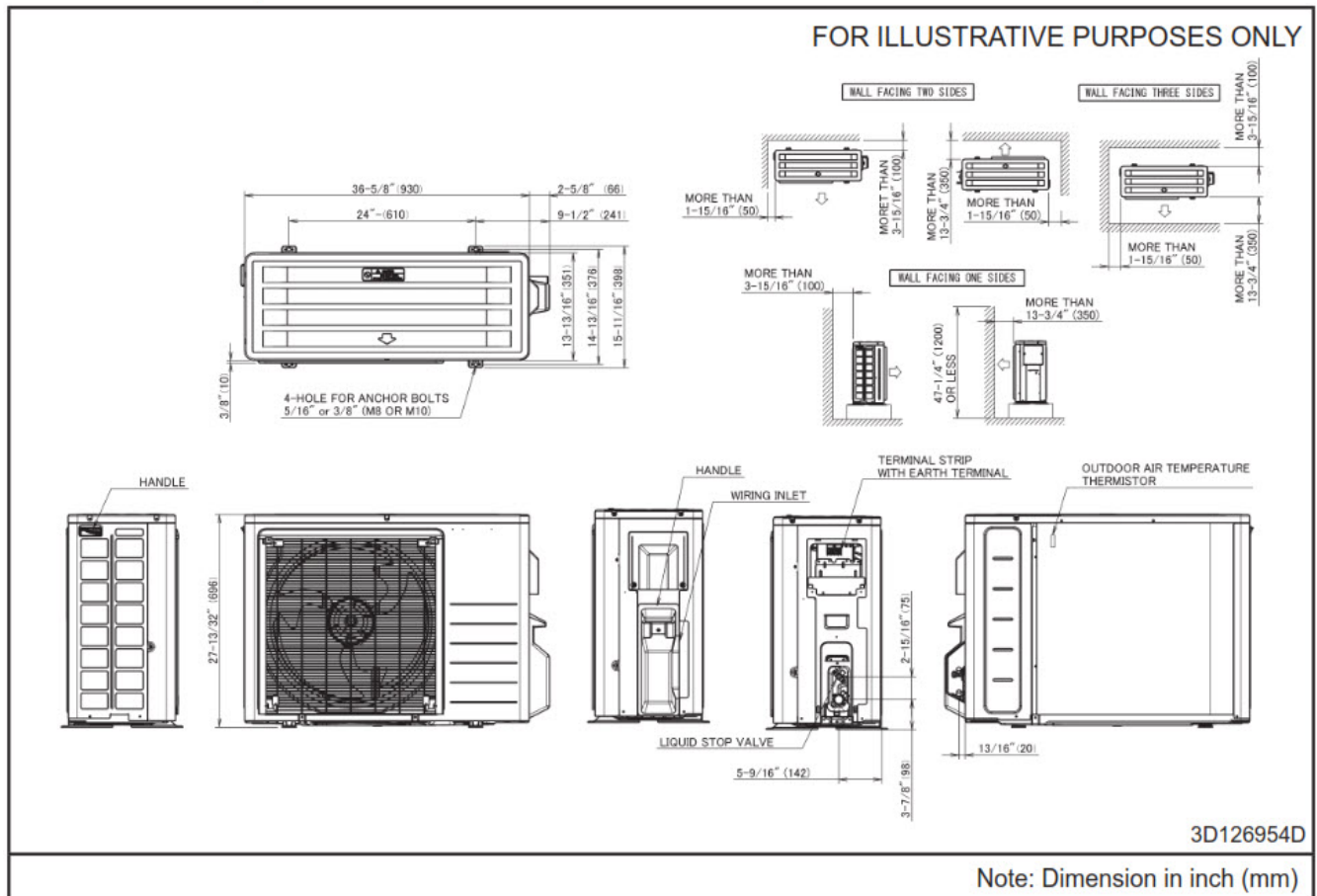
FTXF18AXVJU-RXF18AXVJU

OUTDOOR UNIT DETAILS

Power Supply (V/Hz/Ph):	208-230 / 60 / 1	Compressor Stage:	Inverter
Power Supply Connections:	L1, L2, L3, Ground	Capacity Control Range (%):	-
Min. Circuit Amps MCA (A):	16.34	Airflow Rate (H) (CFM):	1879
Max Overcurrent Protection (MOP) (A):	20	Gas Pipe Connection (inch):	1/2
Max Starting Current MSC(A):		Liquid Pipe Connection (inch):	1/4
Rated Load Amps RLA(A):		Sound Pressure (H) (dBA):	54
Dimensions (HxWxD) (in):	27-13/32 x 36-5/8 x 13-13/16	Sound Power Level (dBA):	
Net Weight (lb):	101		

DIMENSIONAL DRAWING - OUTDOOR UNIT

Model : RKF18/24A, RXF18/24A





Submittal Data Sheet

R-32 --- 1.5-Ton Wall Mounted Daikin OTERRA Heat Pump System

FTXF18AXVJU-RXF18AXVJU

INDOOR ACCESSORIES

PART NUMBER	DESCRIPTION	INCLUDED
AZAI6WSCDKB	DKN Residential Cloud Wi-Fi Adaptor for Single- and Multi-Zone System (S21)	No
AZAI6WSPDKC	DKN Plus Interface	No
BRC51D61	Wired Remote Controller Kit	No
DACA-CP1-1	Mini Aqua Condensate Pump	No
DACA-CP4-1	MINI WHITE PUMP KIT 100-250V	No
DTST-LTE-LA-A	Daikin One Lite (with Translation Adaptor for S21 only)	No
DTST-ONE-ADA-A	Daikin One+ Smart Thermostat for VRV, SkyAir, Single- and Multi-Zone System	No
DTST-TOU-ADA-A	Daikin One Touch Smart Thermostat (with Translation Adaptor for S21 and P1P2)	No
KRP928BB2S	RA Interface Adaptor for DIII-Net -	No

OUTDOOR ACCESSORIES

PART NUMBER	DESCRIPTION	INCLUDED
DACA-WB-3	Powder-Coated Wall-Mounted Bracket	No
KEH063A4EA	Bml LRg Drain Pan Heater Rev A	No
KPW063B4E	Air Adjustment Grille	No

Project Name:		Approval:	
Location:		Date:	
Engineer:		Construction:	
Submitted to:		Unit #:	
Submitted by:		Drawing #:	
Reference:			

MODEL COMPATIBILITY:

Compatible with the following indoor units:

Indoor Unit Family	Model Number	Type
VRV and VRV Life	CXTQ, FXAQ, FXDQ, FXEQ, FXFQ, FXHQ, FXLQ, FXMQ, FXNQ, FXSQ, FXTQ, FXUQ, FXZQ	P1P2
SkyAir	FAQ, FBQ, FTQ, FCQ, FHQ	P1P2
Single-Zone and Multi-Zone	FDMQ, FFQ	P1P2
	CDXS, CTXS*, FDXS, FTK*, FTKB*, FTX*, FTXB* FTXG, FTXR, FTXS, FVXS, FTXM	S21

*FTK_AXVJU, FTKB_AXVJU, FTX_AXVJU, FTXB_AXVJU and CTX_AXVJU units are not compatible.

The following indoor units do not have the S21 connection and require an additional interface adaptor (ordered separately) to provide the S21 connector:

Indoor Unit Models	Required Interface Adaptor
FTX09NMVJU(A), FTX12NMVJU(A), FTX09WVJU9, FTX12WVJU9	KRP067A41E
FTX15NMVJU(A), FTX15WVJU9	KRP980B2E
FTXM09VVJU, FTXM12VVJU, FTXM18VVJU, FTXM24VVJU, FTXM09WVJU9, FTXM12WVJU9, FTXM18WVJU9, FTXM24WVJU9	KER087A41

SPECIFICATIONS:

Model		AZAI6WSPDKC
Description		DKN Plus Interface
Maximum connections		1 for each S21/P1P2 indoor unit
Wiring	S21 Wire	8.2 ft / 2.5 m (Included)
	P1P2 Wire	8.2 ft / 2.5 m (Included)
Modbus RTU / BACnet MSTP communication baud rate		9600, 19200, 38400, 57600, 76800, 115200 bps (Default: 38400)
Power supply	For DKN Plus Interface	12-16VDC from indoor unit PCB
	For 3rd party thermostat	24VAC from external power supply
Contact Rating	Digital output (Aux. Heat)	1 amp. at 24VAC (Normally Open (NO))
	Digital Input (Force Off)	Dry contact (Configurable as NO or NC).
Dimensions		3.62 in x 3.15 in x 1.14 in / 92mm x 80 mm x 29 mm
Weight		3.24 oz / 92g
Storage temperature		-4°F to 158°F
Operation temperature		32°F to 113°F
Compliance		EMC with the standard 47 CFR Part 15B (US) EMC with ICES-003 Issue 6 standard (Canada)

PRODUCT IMAGE:



DAIKIN COMFORT TECHNOLOGIES NORTH AMERICA, INC.

19001 Kermier Road, Waller, TX, 77484

www.daikinac.com www.daikincity.com

Rev.0823



Submittal Data Sheet

AZAI6WSPDKC – DKN Plus Interface

Project Name: _____

Location: _____

Engineer: _____

Submitted to: _____

Submitted by: _____

Reference: _____

Approval: _____

Date: _____

Construction: _____

Unit #: _____

Drawing #: _____

FEATURES:

- Versatile interface that can integrate with smart thermostat through multiple approaches:
 - Cloud API (Honeywell Home App/Cloud – Ecobee App/Cloud – Nest App/Cloud)
 - Local API (integration to Daikin Color Touch (DT4272C) with firmware v4.05 - Premium Mini (D2270C) “Future”)
 - Modbus RTU
 - BACnet MS/TP
- 3rd party thermostat G/Y/W (Fan/Cool/Heat) relay control through thermostat wiring.
 - Automatically disables thermostat relay logic when cloud API connection detected.
 - Custom control logic applied to minimize the loss of the indoor unit efficiency when no cloud API, BACnet or Modbus connection detected
 - Compatible Daikin thermostats: App Stat 250803400 – Value Series (TSTATD1100-2 or TSTATD1152-2) – Premium series (D4271C) – Premium Mini (D2270C) – Color Touch (DT4272C)
- Easy commissioning with Bluetooth configuration App (DKN Cloud NA App)
- Indoor unit control and monitoring points (for integration through cloud, Modbus, and BACnet MS/TP only)
 - On/Off – Setpoint - Room temperature - Mode (Auto, Cool, Heat, Fan, Dry) - Fan speed - Louver position - Error code
- Indoor unit force off by interlock control through digital input dry contact.
- Controls auxiliary heater with dry contact as a secondary heat source:
 - Turn on and off the auxiliary heater based on the differential (configured in App) between the setpoint and the room temperature.
 - Enable/Disable the auxiliary heater based on outdoor temperature (S21 IDU only)
 - The user can enable the emergency heat mode from the DKN App
 - If the indoor unit has an error, the user can enable the emergency heater from the app.
- Integration to home automation systems through software drivers
 - Crestron
 - Control4
 - RTI Control
 - Fibaro
- Modbus RTU and BACnet MS/TP Integration
 - The following points are available:

No.	Point Name	Read Only/Writable
1	Unit on/off	Writable
2	Setpoint	Writable
3	Room temperature	Writable**
4	Mode Auto/Cool/Heat/Fan/Dry	Writable
5	Fan speed	Writable
6	Louver position	Writable
7	Error code	Read only
8	Digital input status	Read only
9	Aux heat output status	Read only

** The room temperature is writable for P1P2 indoor units only and read only for S21 indoor units.

DAIKIN COMFORT TECHNOLOGIES NORTH AMERICA, INC.

19001 Kermier Road, Waller, TX, 77484

www.daikinac.com www.daikincity.com

Rev.0823

(Daikin's products are subject to continuous improvements. Daikin reserves the right to modify product design, specifications and information in this data sheet without notice and without incurring any obligations)

Project Name: _____

Location: _____

Engineer: _____

Submitted to: _____

Submitted by: _____

Reference: _____

Approval: _____

Date: _____

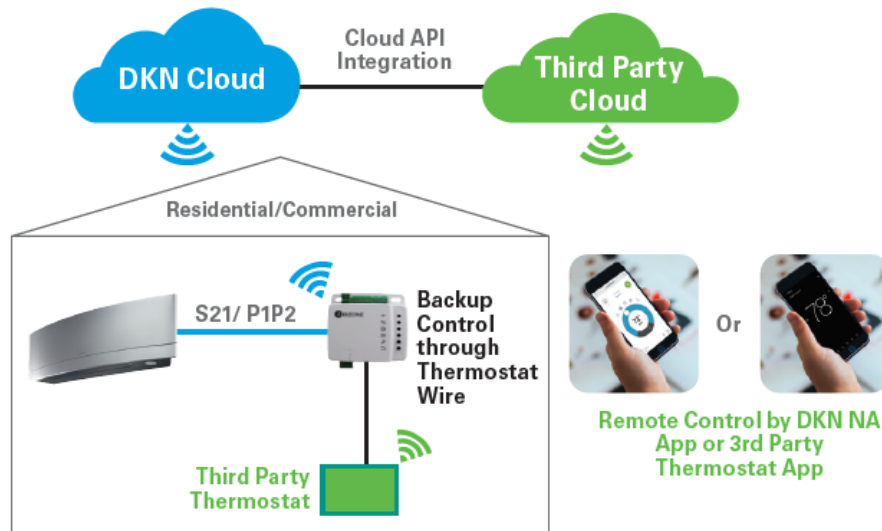
Construction: _____

Unit #: _____

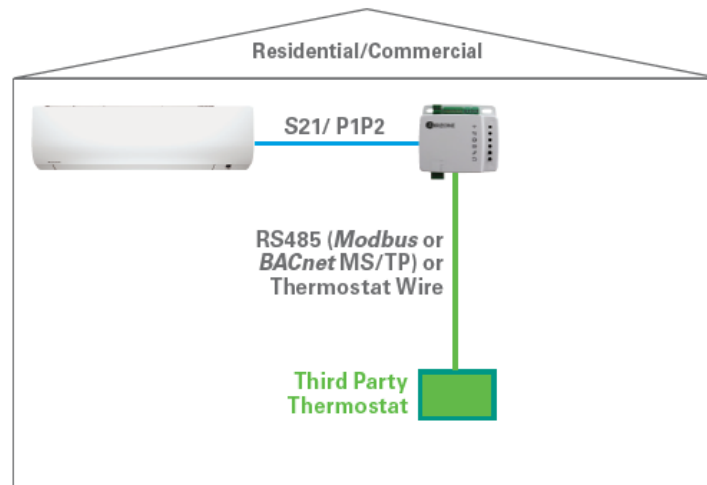
Drawing #: _____

SYSTEM DIAGRAM:

- Integration with 3rd party thermostat
 - Integration with Smart Thermostats through 3rd party Cloud API



- Integration through RS485 or Thermostat Wire



DAIKIN COMFORT TECHNOLOGIES NORTH AMERICA, INC.

19001 Kermier Road, Waller, TX, 77484

www.daikinac.com www.daikincity.com

Rev.0823

Project Name: _____

Location: _____

Engineer: _____

Submitted to: _____

Submitted by: _____

Reference: _____

Approval: _____

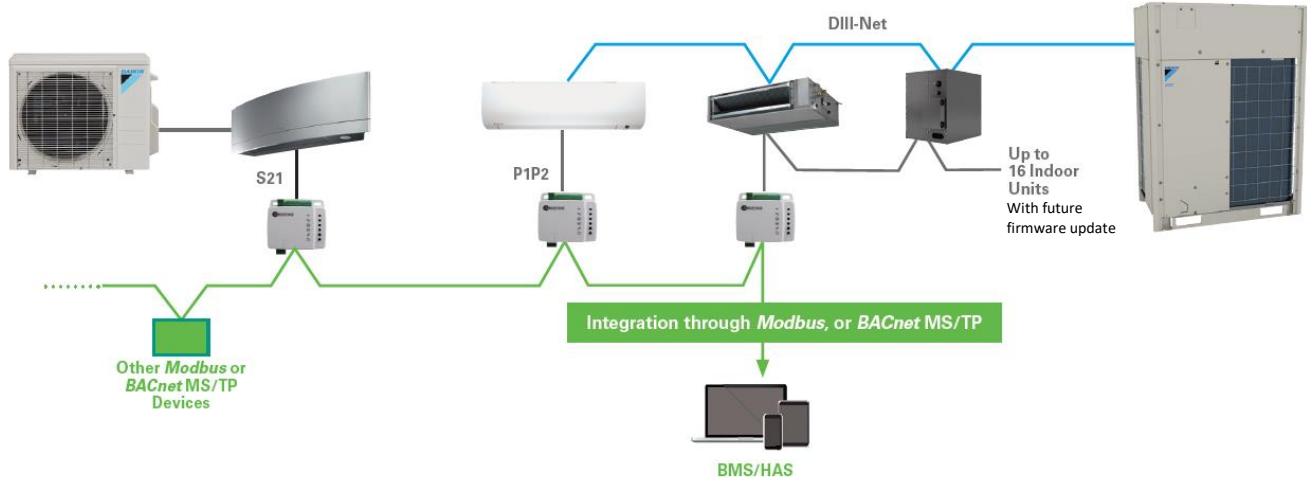
Date: _____

Construction: _____

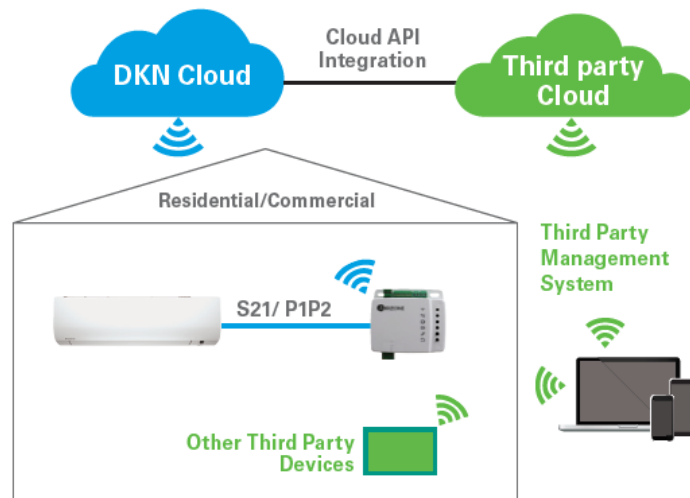
Unit #: _____

Drawing #: _____

- Integration with Building Management System (BMS) or Home Automation System (HAS)
 - Integration through Modbus or BACnet MS/TP



- Integration through Cloud API



Project Name: _____

Location: _____

Engineer: _____

Submitted to: _____

Submitted by: _____

Reference: _____

Approval: _____

Date: _____

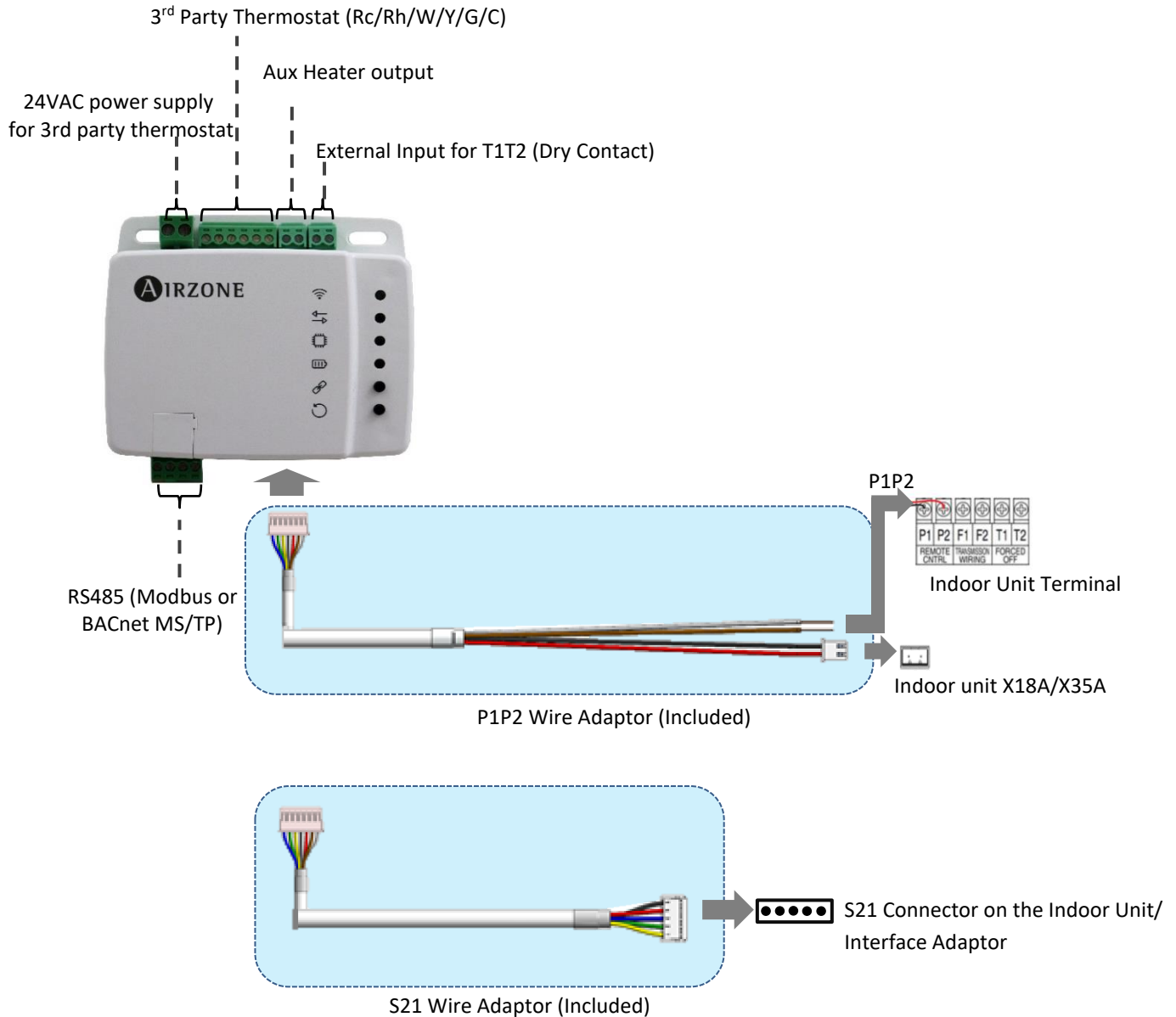
Construction: _____

Unit #: _____

Drawing #: _____

WIRING DIAGRAM:

- Connects to P1P2 indoor unit



DAIKIN COMFORT TECHNOLOGIES NORTH AMERICA, INC.

19001 Kermier Road, Waller, TX, 77484

www.daikinac.com www.daikincity.com

Rev.0823

(Daikin's products are subject to continuous improvements. Daikin reserves the right to modify product design, specifications and information in this data sheet without notice and without incurring any obligations)

Project Name: _____

Location: _____

Engineer: _____

Submitted to: _____

Submitted by: _____

Reference: _____

Approval: _____

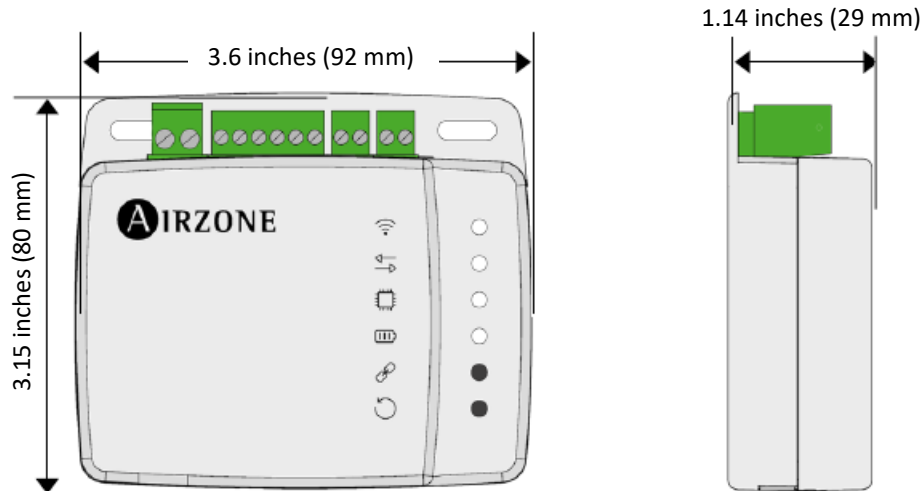
Date: _____

Construction: _____

Unit #: _____

Drawing #: _____

DIMENSIONS:



DOCUMENTATION:

Documentation available on www.daikincity.com and/or www.daikinac.com:

- Submittal
- Operation Manual
- Installation Manual
- Product Flyer
- Written Guide Specs

DAIKIN COMFORT TECHNOLOGIES NORTH AMERICA, INC.

19001 Kermier Road, Waller, TX, 77484

www.daikinac.com www.daikincity.com

Rev.0823