

PRINTED: 2/5/2025 4:25 PM BY: Anne Sturtevant LAST SAVED: 2/5/2025 3:52 PM BY: ahs
g:\327\32786\enrg\sheet\2403_puyallup_wa_fire_alarm_sheet_set.dwg

COMPLIANCE NOTES "PROPRIETARY SYSTEM"

1. THIS SYSTEM DESIGN IS BASED UPON COMPLIANCE WITH THE NATIONAL, STATE AND LOCAL CODES. THE OCCUPANCY CLASS IS MERCANTILE. THE FACILITY WILL BE PROTECTED THROUGHOUT BY A FULLY SUPERVISED FIRE SPRINKLER SYSTEM PER NFPA 13 AND NFPA 72.
2. ELECTRONIC SPRINKLER SUPERVISORY SERVICE IS PROVIDED AND IS PROPRIETARY SYSTEM UNDER NFPA 72.
3. FLOW SWITCHES WILL BE PROVIDED ON ALL SPRINKLER RISERS WITH ALARM ZONING CONCORDING WITH SPRINKLER ZONING.
4. TAMPER SWITCHES WILL BE PROVIDED ON ALL VALVES, AND WHERE APPLICABLE, ALL OTHER ELEMENTS ESSENTIAL TO THE PROPER OPERATION OF THE SPRINKLER WILL ALSO BE SUPERVISED.
5. REMOTE ANNUNCIATOR(S) WILL PROVIDE POINT IDENTIFICATION. ALL DEVICES/ZONES IN ALPHANUMERIC DISPLAY, AND AT LEAST ONE WILL BE LOCATED AT A CONSTANTLY ATTENDED LOCATION ON SITE. THE FACI CABINET HAS NO ANNUNCIATOR OR USER INTERFACE CONTROLS, AND IS A CABINET HOUSING (NON-ANALOG ADDRESSABLE) CIRCUITRY ONLY.
6. AT LEAST ONE MANUAL STATION WILL BE INSTALLED AND LOCATED WHERE REQUIRED BY THE AHA, PER NFPA 72, UNLESS OTHERWISE SPECIFIED BY THE AHA, IT WILL BE LOCATED AT THE CONTINUOUSLY ATTENDED LOCATION ON SITE, PER THE DRAWINGS.
7. ONE SMOKE DETECTOR WILL BE INSTALLED ABOVE THE FACU IN ACCORDANCE WITH NFPA 72 AND ANY REMOTE LOCATIONS WHERE FIRE CONTROL EQUIPMENT IS INSTALLED.
8. AIR HANDLING UNITS IN EXCESS OF 2000 CFM WHICH INCLUDE DUCT SMOKE DETECTORS SHALL SHUT DOWN THEIR RESPECTIVE FANS AND CAUSE A "SUPERVISORY" SIGNAL ON THE FACU PER NFPA 72. SEE SCOPE OF MECHANICAL CONTRACTOR SHOP DRAWINGS FOR DETAILS.
9. COOKING HOOD SUPPRESSION SYSTEM(S) (IF ANY) SHALL BE CONNECTED TO THE SYSTEM TO CAUSE AN "ALARM" SIGNAL UPON AGENT DISCHARGE, PER NFPA 17 AND NFPA 72. SEE SUPPRESSION CONTRACTOR'S SHOP DRAWINGS FOR DETAILS.

10. ALL NON-REQUIRED DEVICES INDICATED IN THE SUBMITTAL (IF ANY), ARE VOLUNTARILY PROVIDED AND ARE DESIGNATED AS "SUPPLEMENTARY" IN NATURE, AS DEFINED IN NFPA 72.
 11. AUDIBLE AND VISUAL NOTIFICATION APPLIANCES ARE PROVIDED AS INDICATED ON THE PLAN.
 12. WALMART SECURITY TECHNOLOGY WILL INSTALL THE FIRE ALARM WHERE LEGALLY ENTITLED BY LICENSING, PERMITTING, CERTIFICATION OR EXEMPTION, LOCAL CONTRACTOR TO BE USED ELSEWHERE.
 13. OFF PREMISES, AUTOMATIC ALARM NOTIFICATION WILL BE VIA TWO APPROVED MEANS OF COMMUNICATION TO WALMART'S UL LISTED (ULF) CENTER. SEE UL FILE #53152-1 FOR CERTIFICATE INFORMATION.
 14. WIRING WILL BE INSTALLED PER (THE NEC) NFPA 70 AND ALL OTHER APPLICABLE SECTIONS. ALL EQUIPMENT SHALL BE PROPERLY LISTED PER NFPA 72.
 15. THIS SYSTEM IS DESIGNATED AS A "PROPRIETARY SUPERVISING STATION SYSTEM" IN ACCORDANCE WITH NFPA 72 WITH 24 HOURS OF STAND-BY POWER THEN 5 MINUTES IN "ALARM" PER NFPA 72. STORE MANAGEMENT PERSONNEL ARE DESIGNATED FOR 1 HOUR RUNNER SERVICE.
 16. THESE NOTES DO NOT SUPERSEDE REQUIREMENTS OF OTHER TRADES, SPECIFICALLY INCLUDING MECHANICAL.
 17. APPLICABLE STATE AND LOCAL MODIFICATION ADOPTED THROUGH DUE PROCESS OF LAW AND WHICH CONFLICT WITH THESE NOTES SHALL SUPERSEDE AND COPIES SHOULD BE CONVEYED TO THE CONTACT PERSON INDICATED BELOW.
 18. A COMPLETE SET OF APPROVED PLANS SHALL BE MAINTAINED ON THE CONSTRUCTION SITE AT ALL TIMES.
- DIRECT FIRE ALARM RELATED (ONLY) COMPLIANCE ISSUES TO:
JOSH HOUGHTON
1805 N. 2ND STREET
ROGERS, AR 72756
PHONE: (479)636-2004
EMAIL: JHOUGHTON@AMFOHVOICE.COM

DEMOLITION NOTES

1. ALARM INSTALLER TO MAINTAIN THE EXISTING FACU SYSTEM OPERATIONAL THROUGH THE REMODEL PROCESS AS REQUIRED BY CODE.
2. CONTRACTOR MUST VISIT THE BUILDING TO DETERMINE THE FULL EXTENT OF THE EXISTING FIRE PROTECTION WORK AND EXISTING CONDITIONS. BECOME TOTALLY FAMILIAR WITH THE DISCONNECTIONS, REMOVALS OF EXISTING FIRE ALARM EQUIPMENT, AND CONDITIONS IN THE PROPOSAL FOR THIS PROJECT. NO EXTRA COMPENSATION WILL BE PAID FOR LACK OF SUCH DETERMINATION, FAMILIARIZATION, AND/OR ALLOWANCE.
3. IN AREAS THAT DO NOT SHOW NOTIFICATION AND OR INITIATION DEVICES, EXISTING DEVICES SHALL REMAIN.
4. MAINTAIN A PRESENCE AT THE CONSTRUCTION MEETINGS AND KEEP UP WITH THE MOVES. IT IS RECOMMENDED THAT THE CONTRACTOR REMOVE ANY AFFECTED DEVICES PRIOR TO DEMO EXCEPT FOR CRITICAL AREAS THAT WILL NEED TO BE COORDINATED THE NIGHT OF THE MOVE.
5. QUANTITIES INCLUDES ASSOCIATED WIRING AND CONDUITS. NO ADDITIONAL COMPENSATION WILL BE GIVEN FOR WIRING AND CONDUIT REMOVAL.
6. SPLICES ARE NOT ACCEPTABLE, RUN NEW WIRE TO NEW AND EXISTING DEVICES AFTER DEMO.

- PS-X = POWER SUPPLY ASSIGNED TO ASSOCIATED CIRCUITS.
L-X = LOOP ASSIGNED TO ASSOCIATED POWER SUPPLY.
D-X = DEVICE NUMBER ASSIGNED TO ASSOCIATED LOOP.

PLAN ABBREVIATIONS

- (E)-EXISTING TO REMAIN
(R)-RELOCATE
(N)-NEW

WIRE LEGEND

A	FIRE ALARM SYSTEM 3pr #18 AWG FPL TWISTED
B	EXISTING FIRE ALARM SYSTEM 3pr #18 AWG FPL TWISTED
C	NOTIFICATION CIRCUIT 1pr #12 AWG FPL ZIP
D	EXISTING NOTIFICATION CIRCUIT 1pr #12 AWG FPL ZIP

PLENUM RATED CABLE FPLP SHALL BE UTILIZED IN PLENUM RATED CEILING AREAS ONLY

WP = WEATHERPROOF CABLE SHALL BE PROVIDED AS REQUIRED
(+) POSITIVE CIRCUIT POLARITY (-) NEGATIVE CIRCUIT POLARITY

CEILING SCHEDULE

ROOM	HEIGHT	TYPE
MOTHER'S ROOM	9'-0"	GYP
ALCOVE	10'-0"	ACT
STORAGE	18'-2" TO 18'-0"	OPEN

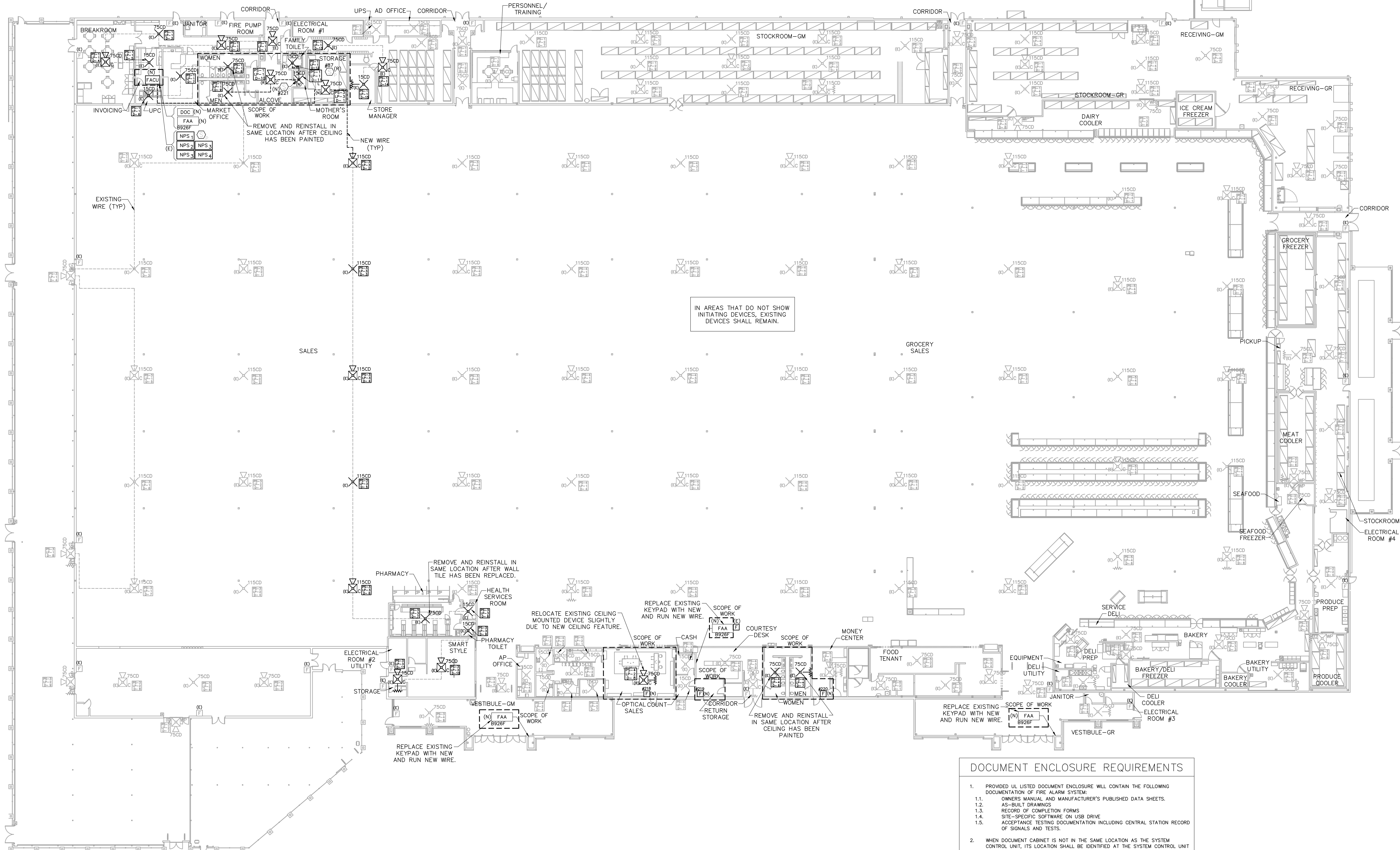
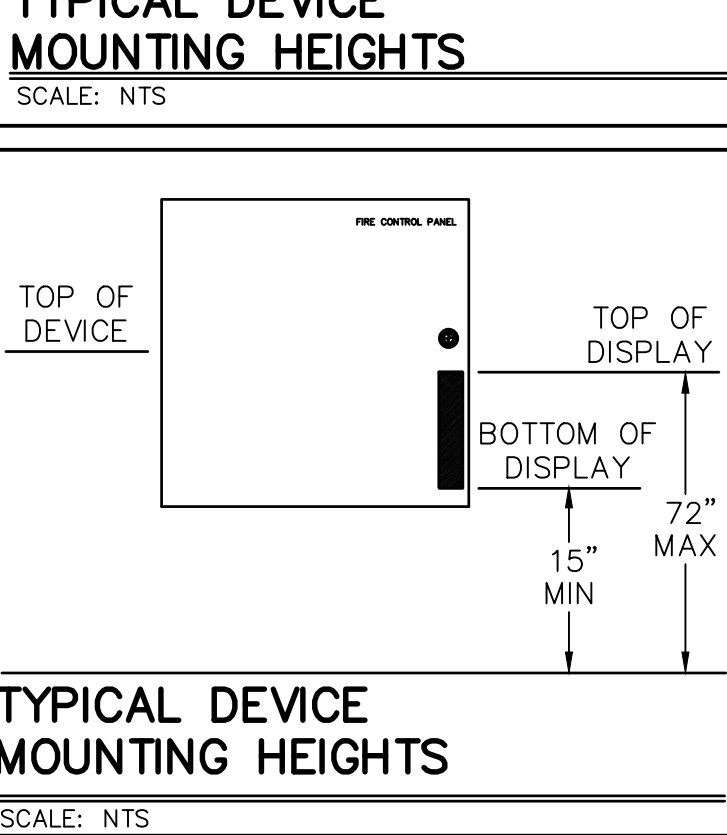
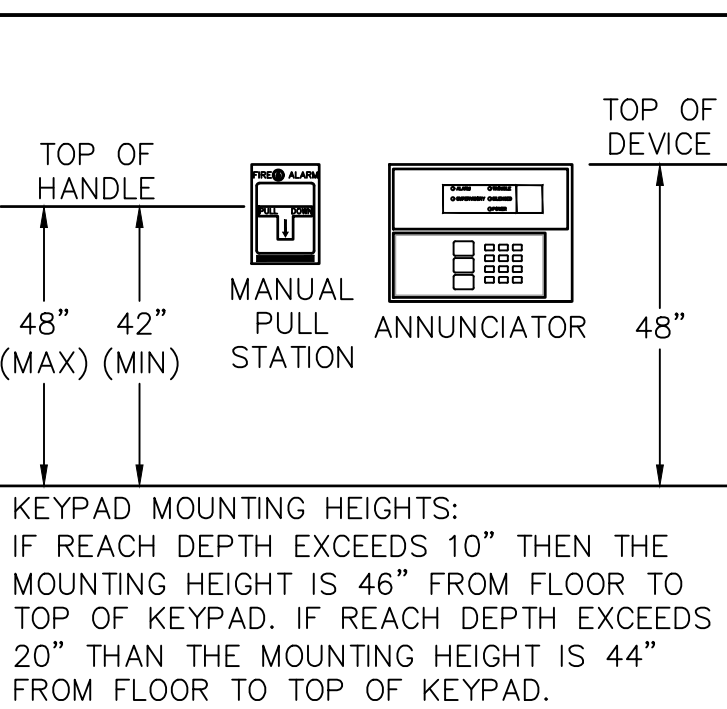
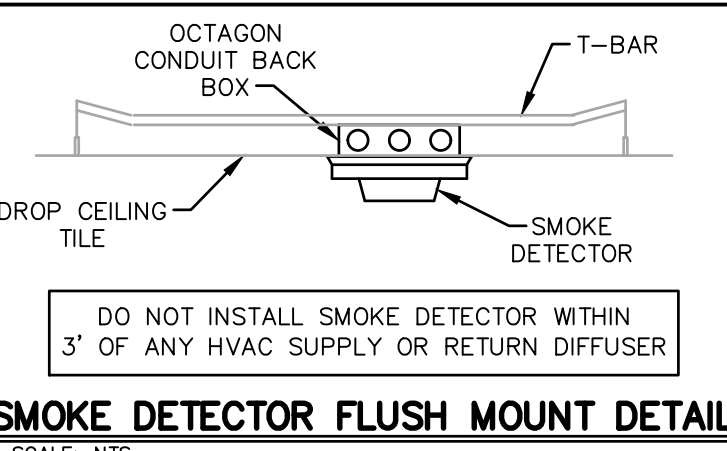
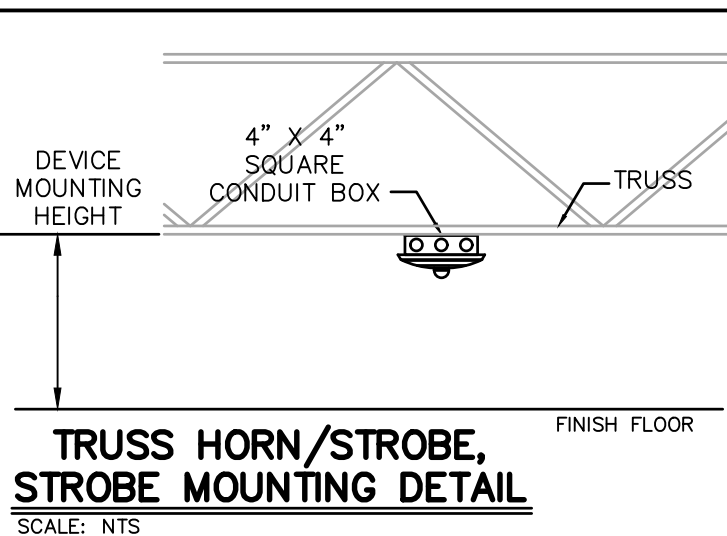
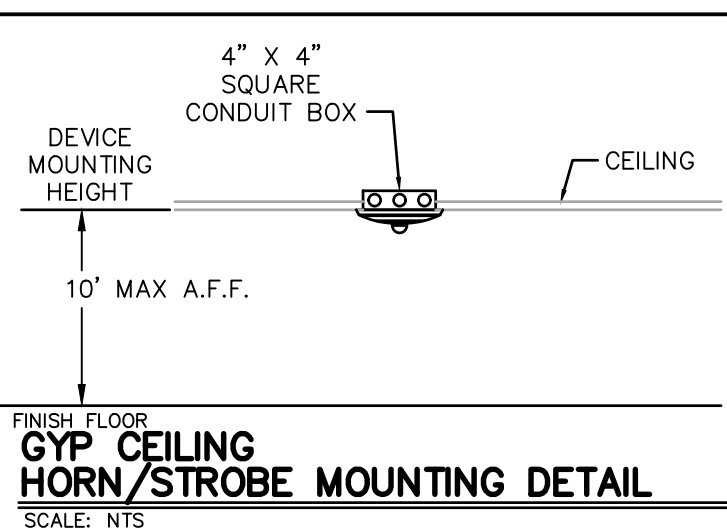
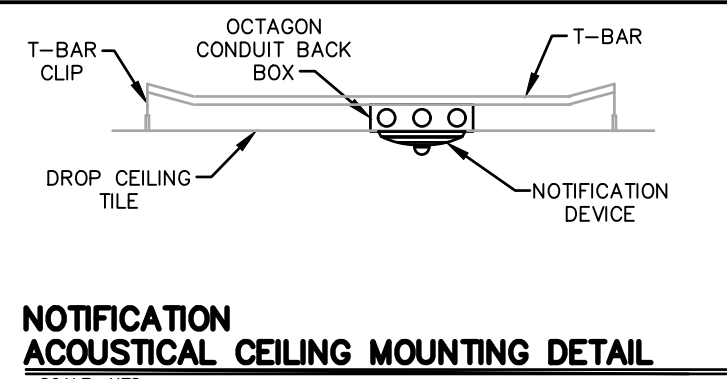
ELEVATIONS SHOWN ARE MEASURED FROM FINISHED FLOOR TO BOTTOM OF DECK OR CEILING.

SCOPE OF WORK

1. REMOVE EXISTING CONTROL PANEL. INSTALL NEW 89512G FIRE ALARM CONTROL PANEL AND MODULES SHOWN IN RISER DIAGRAM 1-EFP2. FULL ALARM TESTING AND PERFORMANCE VERIFICATION TO ENSURE OPERATIONAL INTEGRITY.
2. REPLACE EXISTING DB125 POPEX MODULES WITH NEW B299 POPEX MODULES AND REPROGRAM DIP SWITCHES ON ALL INITIATION DEVICES.
3. REPLACE EXISTING FIRE KEYPADS WITH NEW AND RUN NEW WIRE TO GR VESTIBULE, GM VESTIBULE, PANEL AND COURTESY DESK AS SHOWN ON DETAIL 1-EFP1.
4. MOTHER'S ROOM; INSTALL NEW CEILING MOUNTED NOTIFICATION DEVICE AND NEW SMOKE DETECTOR AS SHOWN ON DETAIL 1-EFP1. CONNECT SMOKE DETECTOR TO NEAREST SLC LOOP AND POWER SUPPLY WITH SPARE CAPACITY.
5. ALCOVE; RELOCATE EXISTING CEILING MOUNTED NOTIFICATION DEVICES AS SHOWN ON DETAIL 1-EFP1. REMOVE AND REINSTALL EXISTING SMOKE DETECTORS AS REQUIRED.
6. STORAGE; INSTALL NEW CEILING MOUNTED NOTIFICATION DEVICE AND RELOCATE EXISTING SMOKE DETECTOR AS SHOWN ON DETAIL 1-EFP1. RECONNECT RELOCATED SMOKE DETECTOR TO EXISTING SLC LOOP AND POWER SUPPLY.
7. VISION CENTER; RELOCATE EXISTING CEILING MOUNTED NOTIFICATION DEVICE SLIGHTLY FOR NEW CEILING FEATURE AS SHOWN ON DETAIL 1-EFP1. REMOVE AND REINSTALL EXISTING SMOKE DETECTOR AS REQUIRED.
8. VISION CENTER; INSTALL NEW MANUAL PULL STATION AT NEW DOOR AS SHOWN ON DETAIL 1-EFP1.
9. RETURN STORAGE; INSTALL NEW MANUAL PULL STATION AT NEW DOOR AS SHOWN ON DETAIL 1-EFP1.
10. MONEY CENTER; INSTALL NEW MANUAL PULL STATION AT NEW DOOR AS SHOWN ON DETAIL 1-EFP1.
11. MAINTAIN COMPLETE FUNCTIONALITY OF FIRE ALARM SYSTEM THROUGHOUT DURATION OF REMODEL.
12. CEILING TILES ARE TO BE REPLACED PER THE ARCHITECTURAL PLANS. REMOVE AND RE-INSTALL EXISTING NOTIFICATION DEVICES AND SMOKE DETECTORS ON NEW CEILING TILES, UP TO A MAXIMUM OF (15) ALARM DEVICES AND (15) SMOKE DETECTORS.
13. COMPLETE NFPA72 RECORD OF INSPECTION AND TESTING FORMS UPON COMPLETION, AND ALL APPLICABLE COMPLIANCE INSPECTIONS.
14. ADD SYNC MODULE TO NEW FIRE ALARM CONTROL PANEL.
15. INSTALL NEW PLUG-IN CELLULAR COMMUNICATOR AS SHOWN ON DETAIL 1-EFP2.
16. INVOICING; MOUNT NEW DOCUMENT ENCLOSURE PER REQUIREMENTS LISTED ON SHEET EFP1.
17. CONTRACTOR IS RESPONSIBLE FOR ANY ASSOCIATED CONDUIT TO COMPLETE THE INSTALLATION. THIS WILL INCLUDE BUT NOT LIMITED TO WALL PENETRATION SLEEVES, BACK BOXES FOR AUDIO VISUALS, KEYPAD BOXES AND STUBS, WATERFLOW AND TAMPER SWITCH BOXES AND STUBS.
18. CONTRACTOR SHALL SUPPLY ALL BRIDLE RINGS AND ALL OTHER ASSOCIATED MATERIALS FOR WIRE MANAGEMENT.
19. WDN AND MAG DOORS ARE BEING REMOVED PER ARCHITECTURAL AND POWER DRAWINGS. REMOVE EXISTING SMOKE DETECTORS AND ASSOCIATED WIRING. ALSO, REMOVE SMOKE DETECTOR POINTS FROM PANEL PROGRAMING.
20. REFERENCE DEMOLITION NOTES FOR SCOPE OF WORK.
21. RESTROOMS; ARE BEING REMODELED, REMOVE EXISTING CEILING MOUNT NOTIFICATION DEVICES, AND SMOKE DETECTORS, AND REINSTALL IN SAME LOCATION AFTER CEILINGS HAVE BEEN PAINTED.
22. CONNECT THE SYSTEM TO EARTH GROUND BEFORE MAKING OTHER CONNECTIONS. TERMINAL 10 IS THE EARTH GROUND TERMINAL. USE A RECOMMENDED EARTH GROUND REFERENCE, SUCH AS A GROUNDING ROD, MAKE THE CONNECTION USING 14 AWG TO 16 AWG WIRE.

ALARM SYMBOLS LEGEND

PLAN SYMBOL	QTY	DEVICE DESCRIPTION	PLAN SYMBOL	QTY	DEVICE DESCRIPTION
FACU	1	NEW FIRE ALARM CONTROL PANEL BOSCH DB12G	DB129	1	EXISTING OCTO-RELAY MODULE BOSCH DB129
FAA 8928F	4	NEW SYSTEM ANNUNCIATOR AND FIRE ALARM KEYPAD BOSCH 8928F	B299	3	NEW POPEX MODULE BOSCH B299
S	1	NEW SMOKE DETECTOR BOSCH FCP-350-PTH (WITH FCA-350-B6R12 BASE)	D1640	1	NEW 16.5 VOLT TRANSFORMER BOSCH D1640
EOL P4M4	1	RELAY MODULE P4M4	D8004	1	EXISTING TRANSFORMER ENCLOSURE BOSCH D8004
NPS4	5	EXISTING NOTIFICATION POWER SUPPLY ALTRONIX AL102ULADA P=UNT NUMBER	115cd	1	EXISTING CEILING MOUNT HORN/STROBE SYSTEM SENSOR PC2R, 115cd
S	84	EXISTING SMOKE DETECTOR BOSCH D223THE	125cd	1	EXISTING CEILING MOUNT HORN/STROBE SYSTEM SENSOR PC2R, 125cd
F	3	NEW/EXISTING MANUAL PULL STATION BOSCH FPM-100	15cd	1	EXISTING CEILING MOUNT HORN/STROBE SYSTEM SENSOR PC2R, 15cd
AM	196	NEW/EXISTING PORT MODULE BOSCH D9127U	115cd	1	EXISTING CEILING MOUNT STROBE SYSTEM SENSOR SCR, 115cd
DOC	1	NEW FIRE ALARM DOCUMENT ENCLOSURE PN: 06-SSU008B5	75cd	1	EXISTING CEILING MOUNT STROBE SYSTEM SENSOR SCR, 75cd
B444	1	EXISTING CONNETIX PLUG-IN 4G LTE CELLULAR COMMUNICATOR BOSCH B444	15cd	1	EXISTING CEILING MOUNT STROBE SYSTEM SENSOR SCR, 15cd
D130	4	EXISTING AUXILIARY RELAY MODULE BOSCH D130	75cd	1	EXISTING WALL MOUNT HORN/STROBE SYSTEM SENSOR P2RK, 75cd
DB130	1	EXISTING RELEASE MODULE BOSCH DB130	115cd	1	NEW CEILING MOUNT STROBE SYSTEM SENSOR SCRL15cd
D192G	1	EXISTING NAC MODULE BOSCH D192G	75cd	1	NEW CEILING MOUNT HORN/STROBE SYSTEM SENSOR PC2R, 75cd
SA	1	NEW SYNC CIRCUIT MODULE SYSTEM SENSOR MDLR			END OF LINE RESISTOR/DEVICE



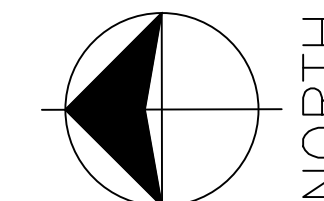
1 ELECTRONIC FIRE PROTECTION PLAN

0' 10' 20' 30' 40' 60'

SCALE: 1"=20'-0"

DOCUMENT ENCLOSURE REQUIREMENTS

1. PROVIDED UL LISTED DOCUMENT ENCLOSURE WILL CONTAIN THE FOLLOWING DOCUMENTATION OF FIRE ALARM SYSTEM:
 - 1.1. OWNERS MANUAL AND MANUFACTURER'S PUBLISHED DATA SHEETS.
 - 1.2. AS-BUILT DRAWINGS
 - 1.3. RECORD OF COMPLETION FORMS
 - 1.4. SITE-SPECIFIC SOFTWARE ON USB DRIVE
 - 1.5. ACCEPTANCE TESTING DOCUMENTATION INCLUDING CENTRAL STATION RECORD OF SIGNALS AND TESTS.
2. WHEN DOCUMENT CABINET IS NOT IN THE SAME LOCATION AS THE SYSTEM CONTROL UNIT, ITS LOCATION SHALL BE IDENTIFIED AT THE SYSTEM CONTROL UNIT BY MEANS OF A PLACARD LOCATED ON THE OUTSIDE OF FIRE ALARM PANEL ENCLOSURE.
3. ENCLOSURE SHALL BE PROMINENTLY LABELED "SYSTEM RECORD DOCUMENTS"
4. THE CONTENTS OF THE CABINET SHALL BE ACCESSIBLE BY AUTHORIZED PERSONNEL ONLY.



LOCATION:
WALMART STORE #2403
310 31ST AVENUE, SE
PUYALLUP, WA 98374

Joshua A. Houghton, CET
Fire Alarm Systems, Level III
SATE 3075
REG #2403-6423
NICET# 122398
FIRE ALARM SYSTEMS, LEVEL III

STIPULATION FOR REUSE
THIS DRAWING WAS PREPARED FOR USE ON THE PROJECT AND SITE SPECIFICALLY IDENTIFIED. IT IS NOT TO BE REUSED FOR ANY OTHER PROJECT WITHOUT THE WRITTEN CONSENT OF THE DESIGNER. ANY REUSE OF THIS DRAWING FOR ANY OTHER PROJECT WITHOUT THE WRITTEN CONSENT OF THE DESIGNER IS PROHIBITED. THE USER OF THIS DRAWING FOR ANY OTHER PROJECT SHALL BE RESPONSIBLE FOR OBTAINING THE NECESSARY PERMISSIONS FROM THE ORIGINAL DESIGNER. ANY REUSE OF THIS DRAWING FOR ANY OTHER PROJECT WITHOUT THE WRITTEN CONSENT OF THE DESIGNER IS PROHIBITED.

CONSULTANTS

Walmart
310 31ST AVENUE, SE
PUYALLUP, WA
STORE NO. 2403-254
JOB NUMBER: 32706

ISSUE BLOCK	DATE	BY	REVISION
1	02/05/25	PCC	#1

CHECKED BY: BRY
DRAWN BY: AHS
PROTO: 192
POSSESSION DATE: 01/13/25
DOCUMENT DATE: 10/21/24

Joshua A. Houghton, CET
1805 N 2nd St.
Rogers, AR 72756-2423
NICET# 122398
Fire Alarm Systems, Level III
Feb 05, 2025

ELECTRONIC
FIRE
PROTECTION
PLAN

SHEET:
EFP1