



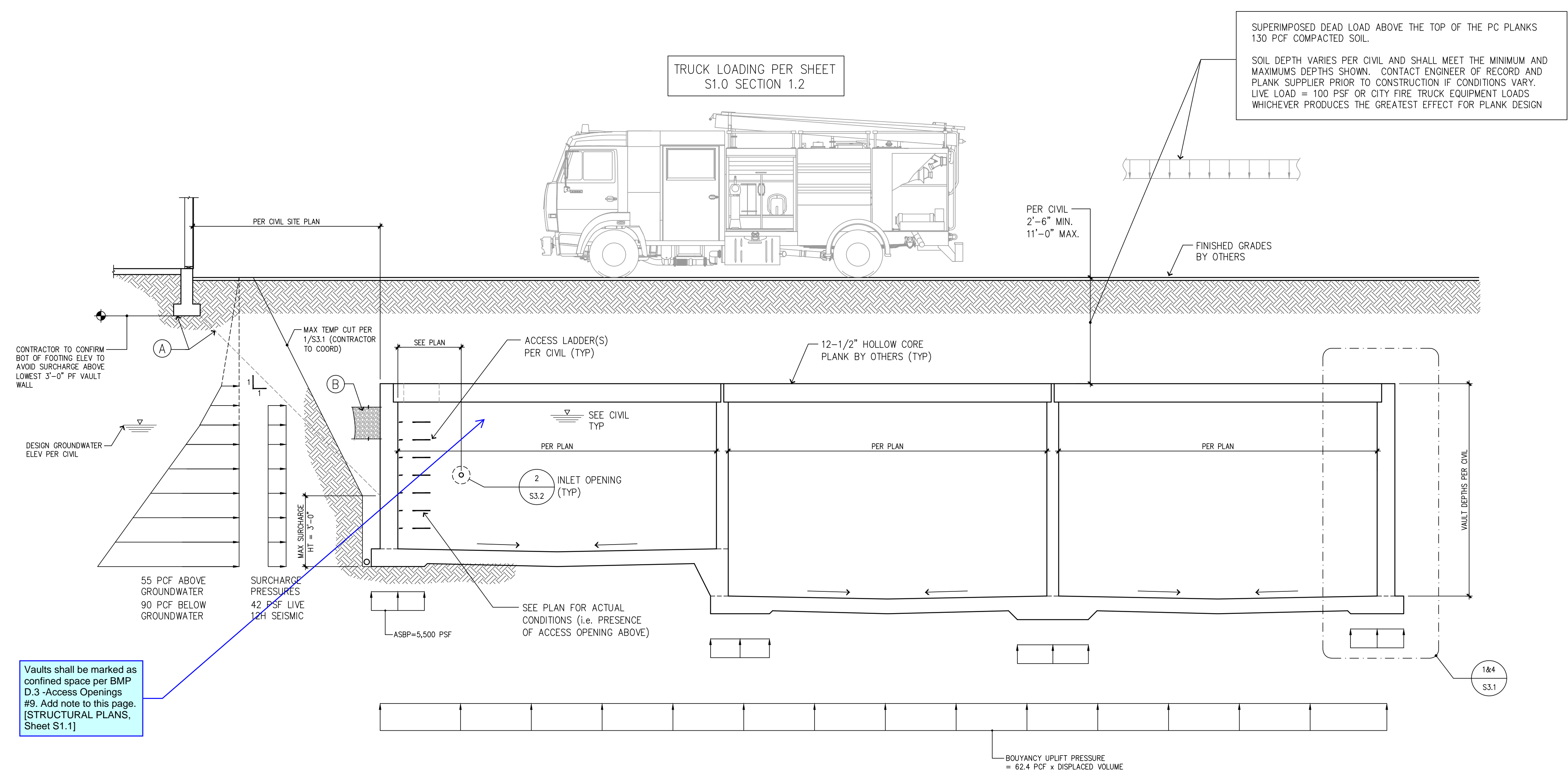
PLOT DATE/TIME: 10/30/2024 - 2:01pm THANK YOU FOR USING SOLUTIONS 4 STRUCTURES

CAD FILE: F:\Projects\23.007 Bradley Heights\Drawings\Detention\_Vault\S1.1.dwg

Civil plans provide vague details for backfill installation. Show ladder and supports that conform to CoP Detail 06.01.04. [STRUCTURAL PLANS, Sheet S1.1]

- (A) TEMPORARY SLOPES PER SOILS ENGINEER. SEE DETAIL 10/S3.1 FOR EXCAVATION NOTES AND MINIMUM BUILDING OFFSETS.
- (B) COMPLETION OF BACKFILL SHALL NOT BEGIN UNTIL AFTER PLANKS ARE PLACED AND GROUTED PER SECTION 1/S3.1 METHODS AND MATERIALS SHALL BE COORDINATED BETWEEN THE SOILS ENGINEER AND THE CONTRACTOR AND SHALL NOT RESULT IN OUT OF PLANE PRESSURES EXCEEDING THE LIMITS NOTED.
- (C) DE-WATERING REQUIRED DURING CONSTRUCTION SHALL REMAIN UNTIL FINAL GRADE MATERIAL HAS BEEN PLACED ABOVE THE PLANKS.

Vaults shall be marked as confined space per BMP D.3 - Access Openings #9. Add note to this page. [STRUCTURAL PLANS, Sheet S1.1]



### Vault Design Loading

8-16-24

THOMAS L. CHASE, PE  
MARTIN R. OMAN, PE, SE  
OLEG G. KONDRATYUK, PE

Revisions to this sheet:

**Bradley Heights Apartments**  
Detention Vaults 2, 3, & 4  
202 27th Ave SE  
Puyallup, Washington

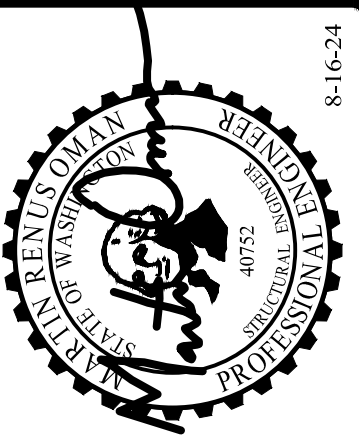
**PRRWF20250235**

**Solutions 4 Structures**  
A Structural Engineering Corporation

Puyallup, Washington 98374  
Ph 253-314-9822  
www.solutions4structures.com

PROJECT NO. : 23-007  
DESIGNED BY : MRO  
DRAWN BY : RSO  
ISSUE DATE : 8-16-24  
LATEST REV. OF DWG. SET :

SUBMITTAL SET ONLY NOT FOR CONSTRUCTION  
THESE DRAWINGS ARE SUBJECT TO REVISIONS PENDING LOCAL JURISDICTIONAL REVIEW.



THOMAS L. CHASE, PE  
MARTIN R. OMAN, PE, SE  
OLEG G. KONDRATYUK, PE

Revisions to this sheet:

**Bradley Heights Apartments**  
Detention Vaults 2, 3, & 4  
202 27th Ave SE  
Puyallup, Washington  
PRRWF20250235  
**Solutions 4 Structures**  
A Structural Engineering Corporation  
Puyallup, Washington 98374  
Ph 253-314-9822  
www.solutions4structures.com

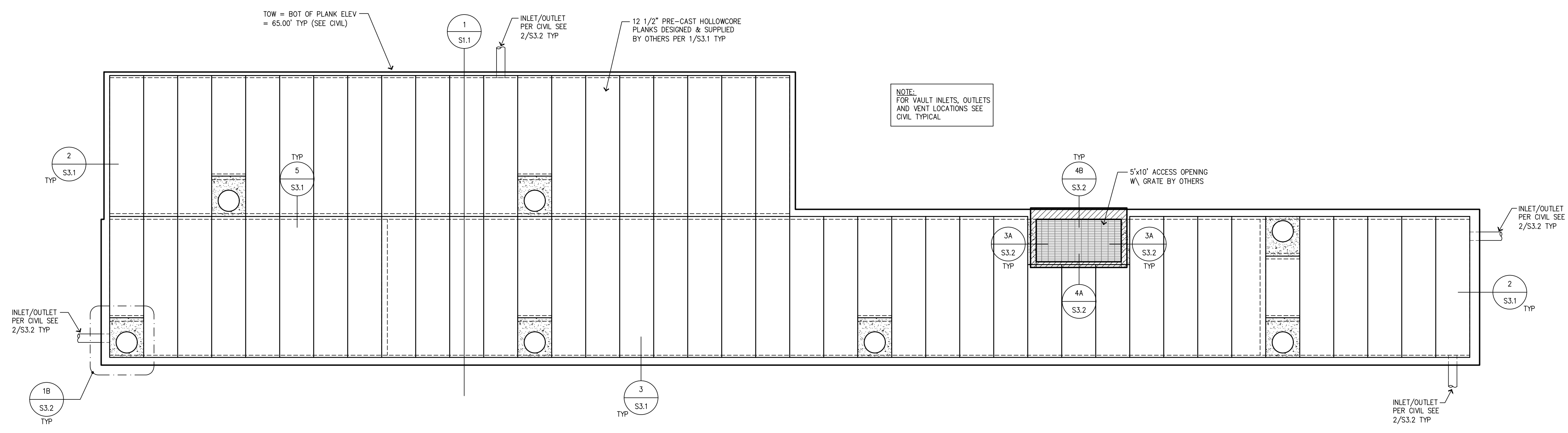
PROJECT NO. : 23-007  
DESIGNED BY : MRO  
DRAWN BY : RSO  
ISSUE DATE : 8-16-24  
LATEST REV. OF DWG. SET :

SUBMITTAL SET ONLY NOT FOR CONSTRUCTION  
THESE DRAWINGS ARE SUBJECT TO REVISIONS PENDING LOCAL JURISDICTIONAL REVIEW.

**S2.1**

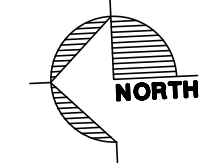
### Plank Framing Notes - Vault 3

1. TOW = TOP OF WALL ELEVATION (ALSO BOTTOM OF PLANKS) = 384.30'
2. TOF = VARIES SEE CIVIL
3. TOP OF VAULT FRAMING TYPICALLY CONSISTS OF SIMPLE SPAN 12-1/2" PRECAST PRE-STRESSED HOLLOW CORE PLANKS TO BE DESIGNED BY OTHERS TO CARRY ALL DESIGN LOADS AS SHOWN ON SHEET S1.1
4. FLOOR PLANK LOCATIONS ARE SCHEMATICALLY SHOWN ON THE PLANS. IT IS NOT THE INTENT OF THE STRUCTURAL PLANS TO GRAPHICALLY LOCATE ALL FRAMING MEMBERS. THE CONTRACTOR IS RESPONSIBLE FOR SPACING FRAMING MEMBERS AS NOTED ON THE PLANS AND GENERATING MEMBER LAYOUTS FOR SHOP DRAWINGS AND QUANTITY TAKEOFFS.
5. REFER TO SHEET S3.1 FOR TYPICAL PLANK CONNECTION DETAILS
6. CONTRACTOR SHALL VERIFY AND COORDINATE ALL OPENINGS THROUGH THE PLANK FRAMING ASSEMBLY. SEE SHEET S3.2 FOR RELATED DETAILS.
7. ALL BACKFILL SHALL NOT BEGIN UNTIL AFTER PLANKS ARE PLACED AND GROUTED. METHODS AND MATERIALS SHALL BE COORDINATED BETWEEN THE SOILS ENGINEER AND THE CONTRACTOR AND SHALL NOT RESULT IN OUT OF PLANE PRESSURES EXCEEDING THE LIMITS NOTED.
8. SEE THE GENERAL STRUCTURAL NOTES ON SHEET S1.0 FOR ADDITIONAL INFORMATION.



### Plank Layout Plan - Vault 3

SCALE 1/8"=1'-0"



### CONTRACTOR NOTE

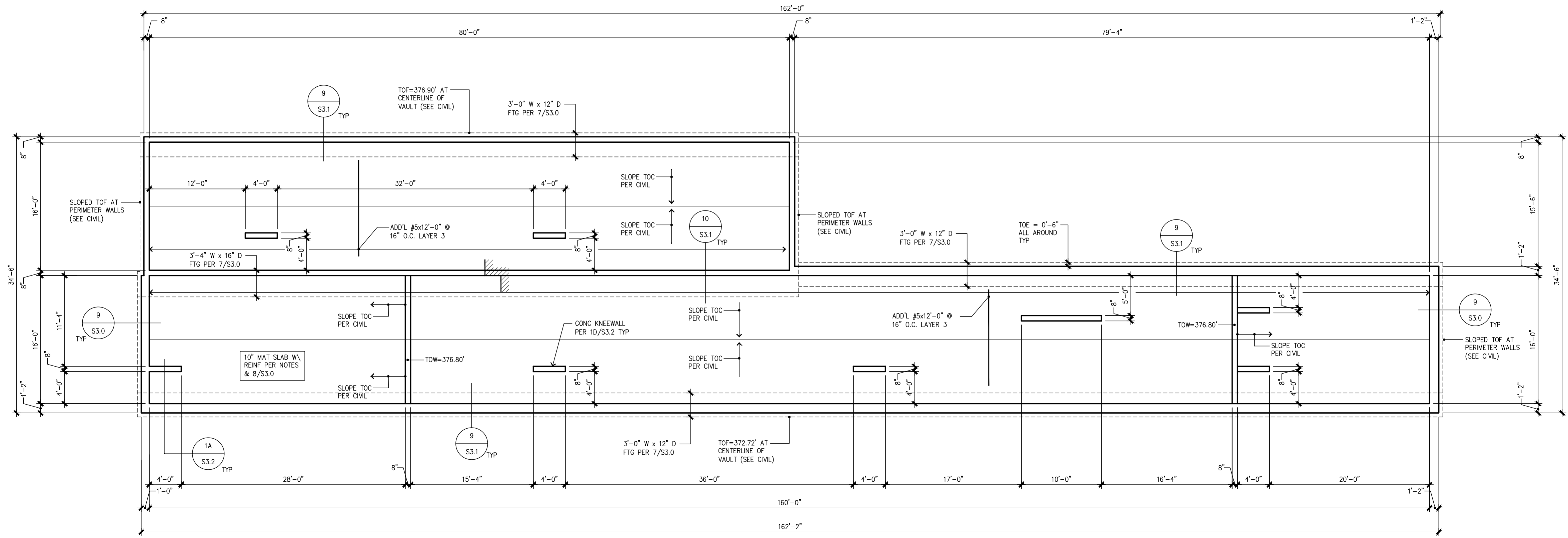
Engineer shall review and approve plank shop drawings prior to install. Engineer will provide a letter of approval of shop drawing prior to install. Engineer's letter will be present at time of inspection.

### NOTE:

Review Geotechnical Engineering Report regarding Temporary Excavations prior to commencement of work.

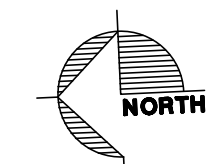
### Foundation Notes - Vault 3

1. TOF ELEVATIONS VARY (SEE PLAN)
2. TYPICAL DIMENSIONS ARE TO FACE OF WALL OR TO CENTERLINE OF COLUMN OR FOOTING. VERIFY ALL DIMENSIONS AND ELEVATIONS WITH THE ARCHITECT.
3. PROVIDE MAT FOOTING SUBSTRATE PREPARATION PER THE SOILS REPORT.
4. ALL FOOTING DOWELS = SAME SIZE AND SPACING AS VERT WALL REINF TYPICAL
5. 10" THICK MAT SLAB W/ #5 @ 16" O.C. EA WAY PER 8/S3.0 & ADD'L REINFORCEMENT PER PLAN TYP.
6. PROVIDE 36"x36" CORNER BARS AT ALL WALL/FOOTING INTERSECTIONS AND CORNERS TO MATCH ALL HORIZONTAL REINFORCEMENT.
7. DO NOT BACKFILL PERIMETER CONC WALLS UNTIL PLANK ASSEMBLY HAS BEEN PLACED AND GROUTED.
8. SEE THE GENERAL STRUCTURAL NOTES ON SHEET S1.0 FOR ADDITIONAL INFORMATION.



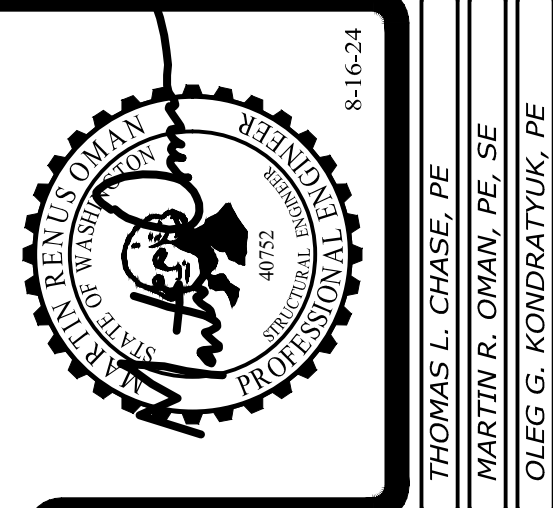
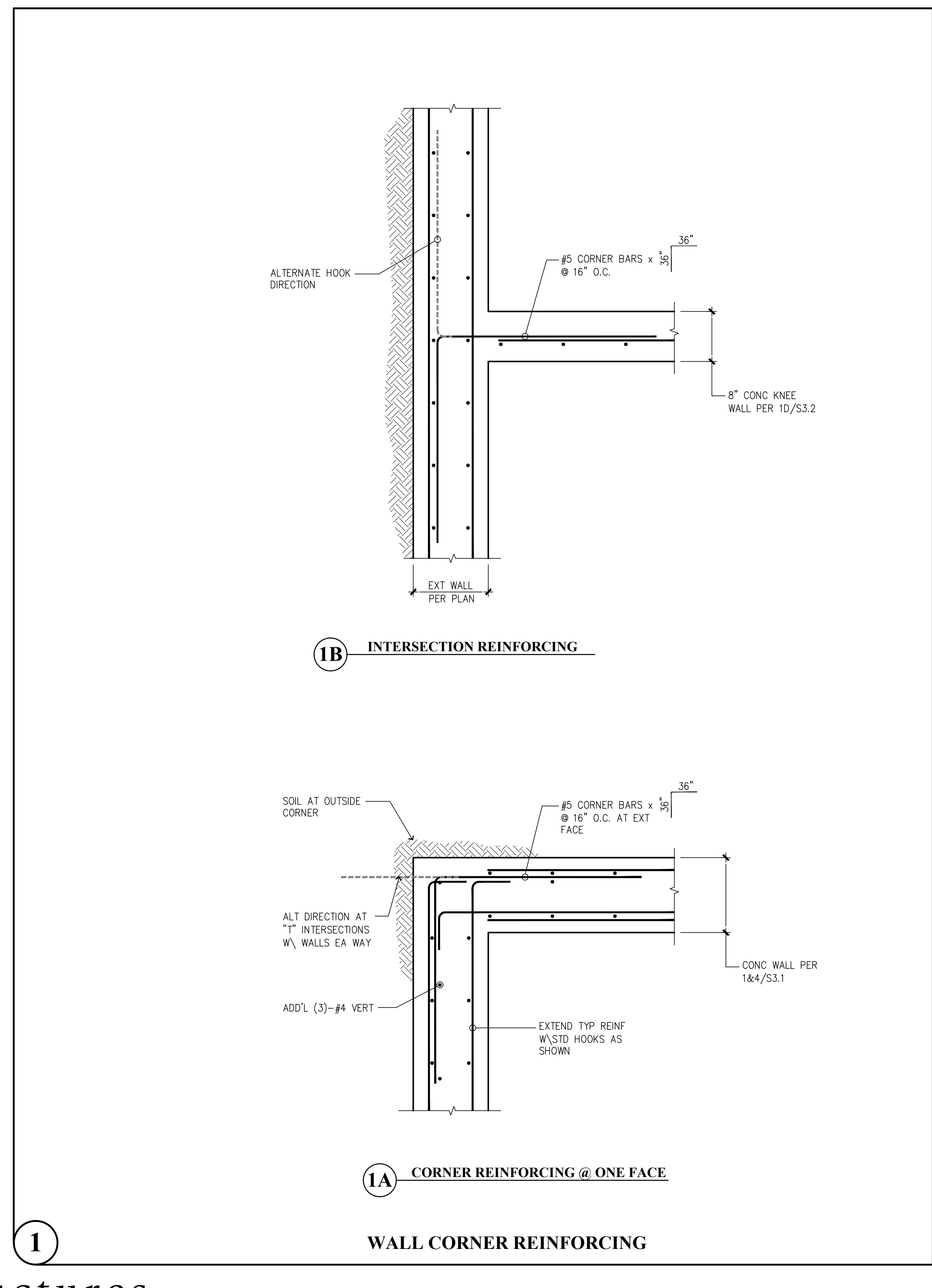
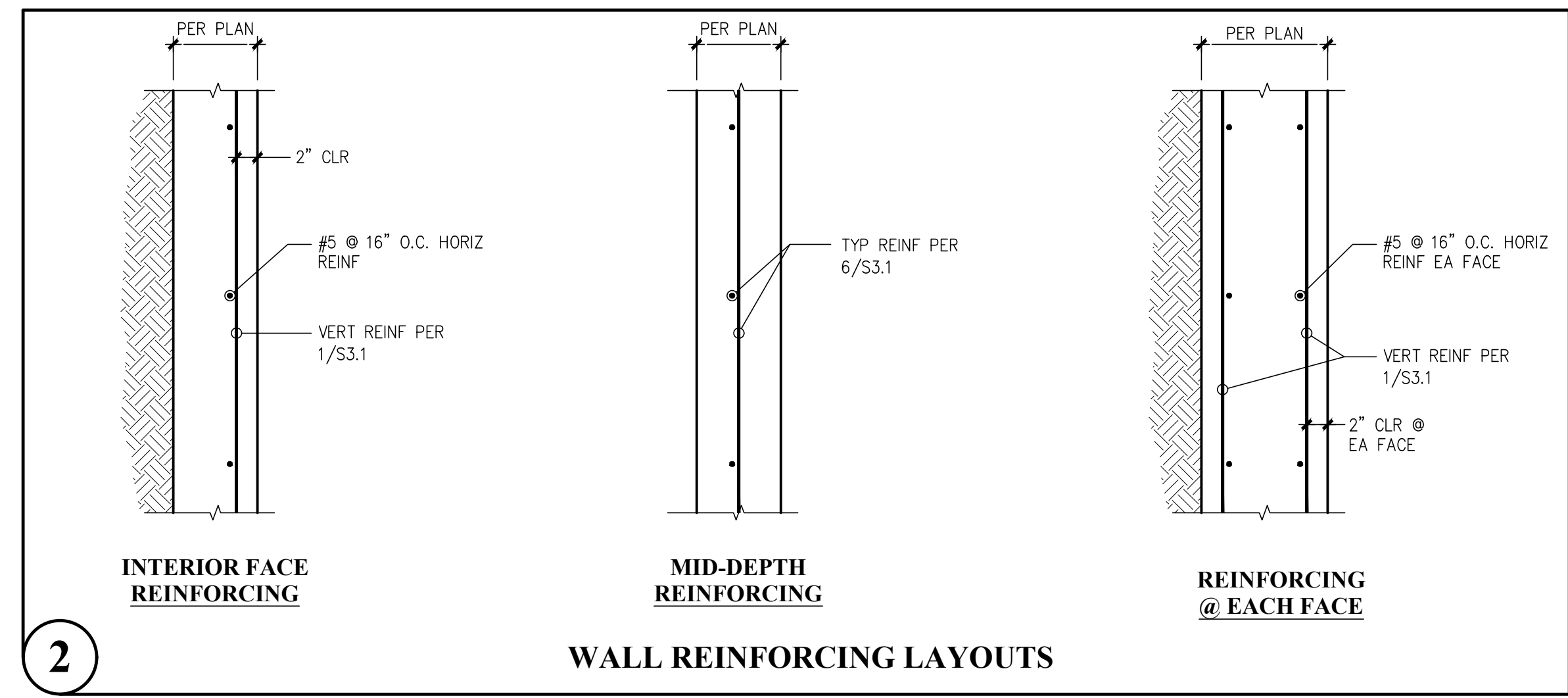
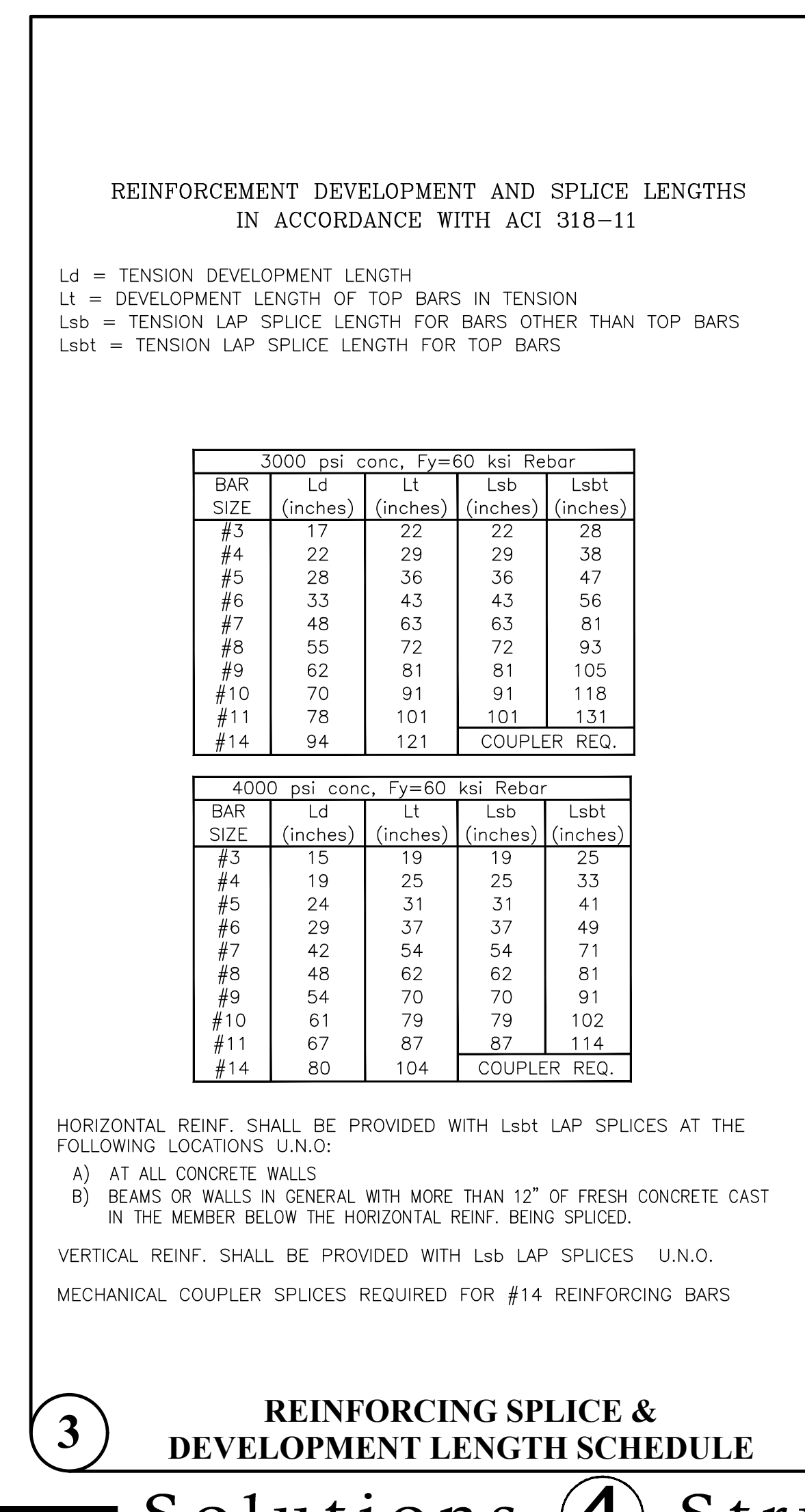
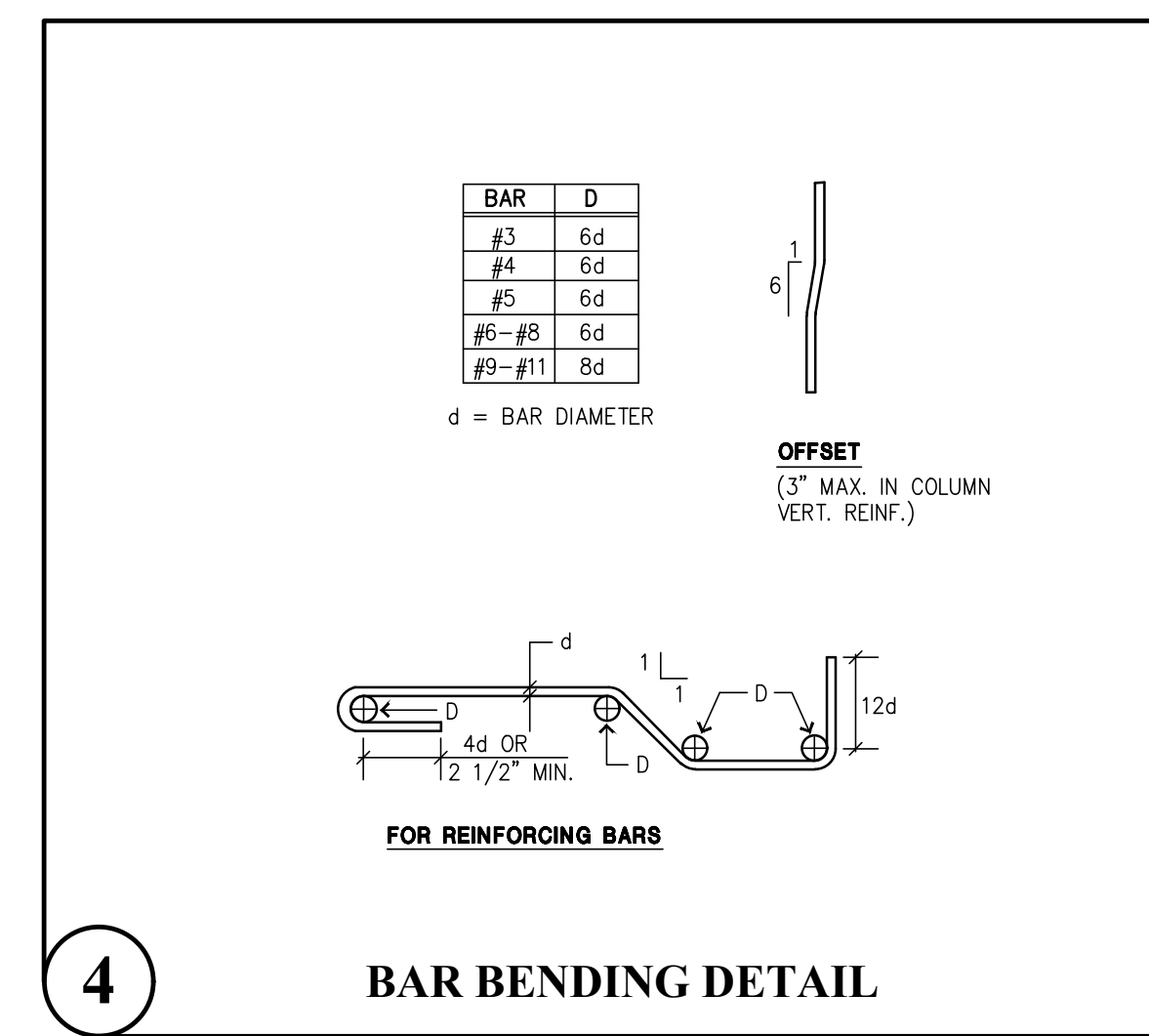
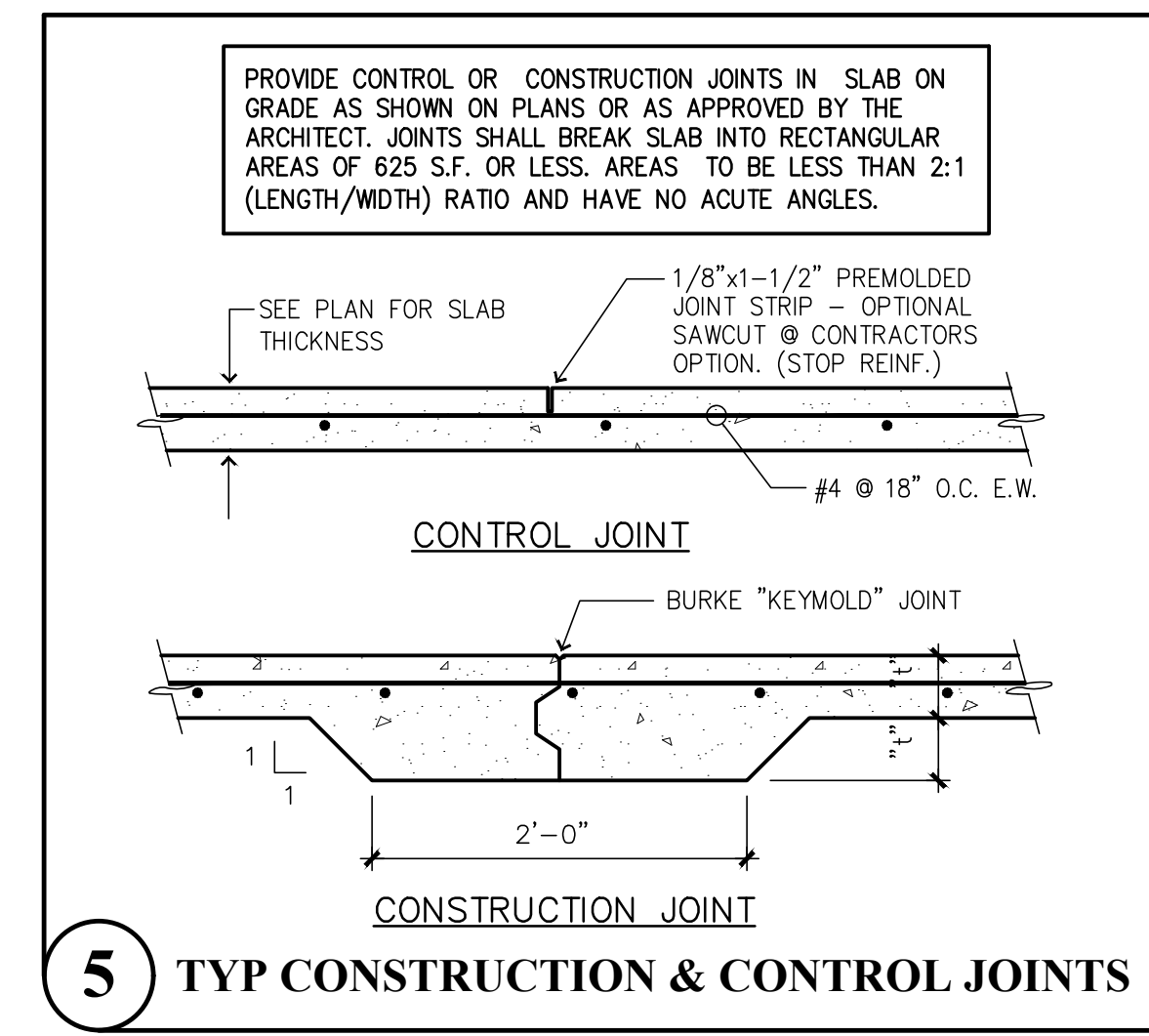
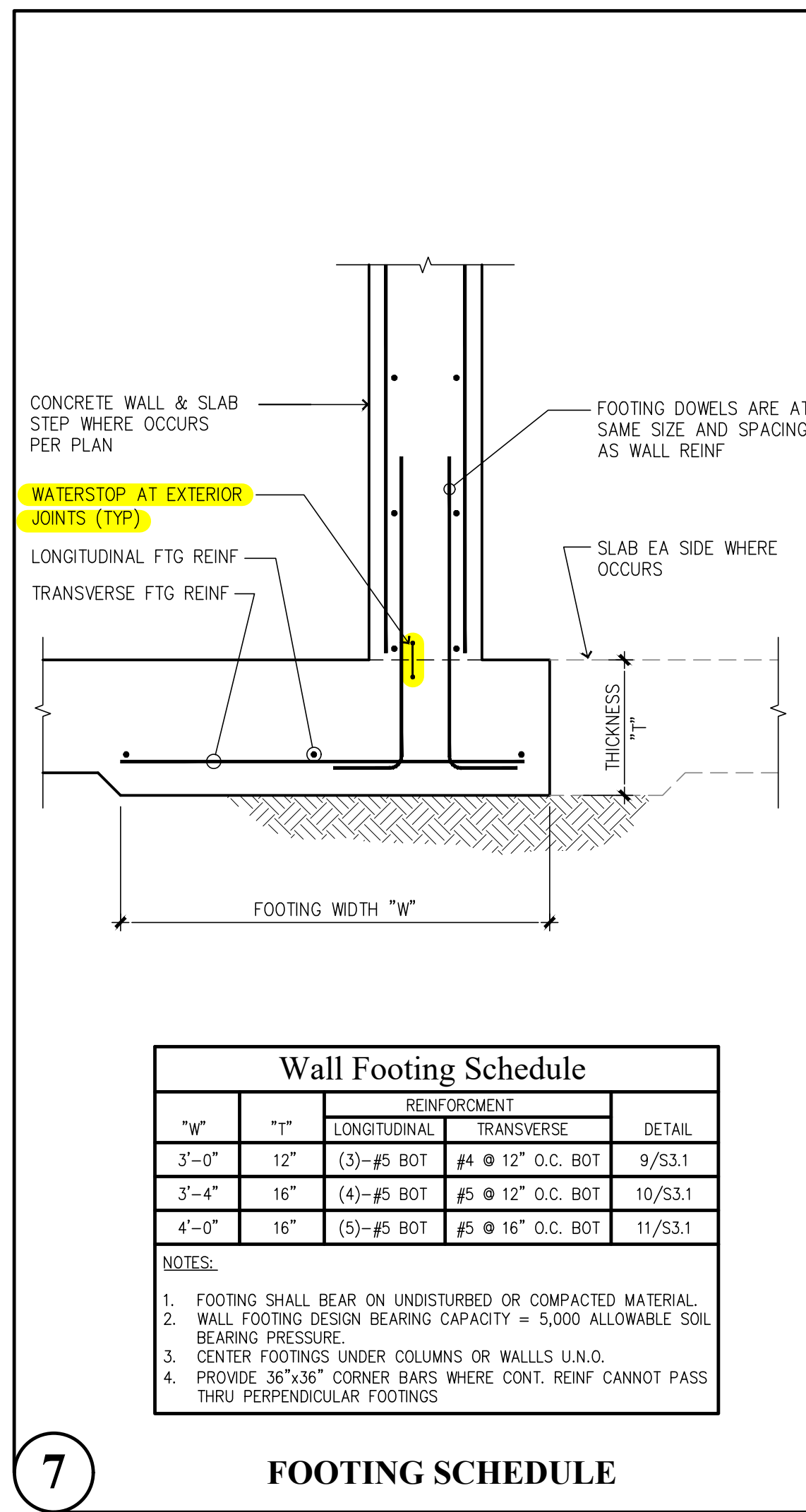
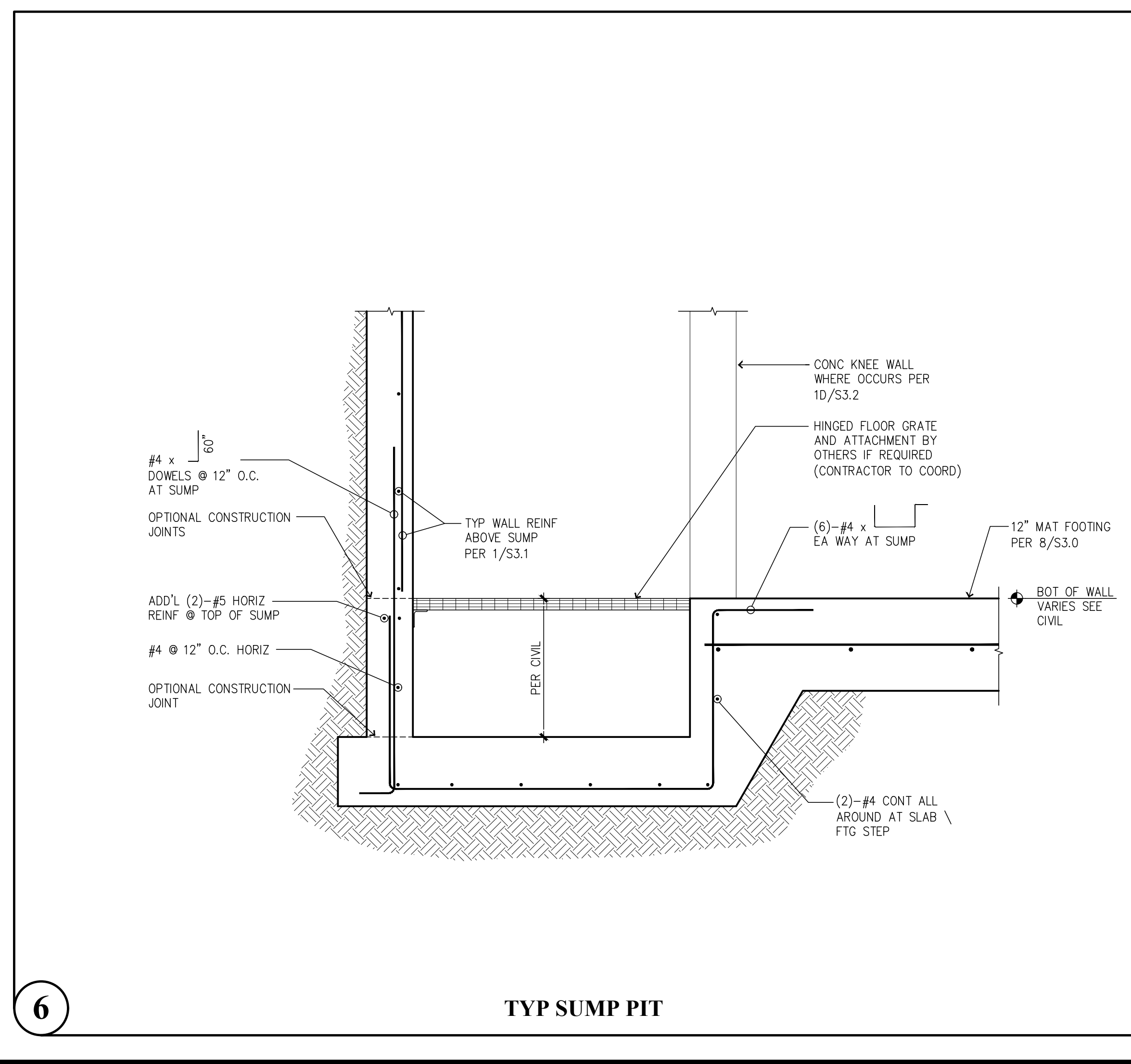
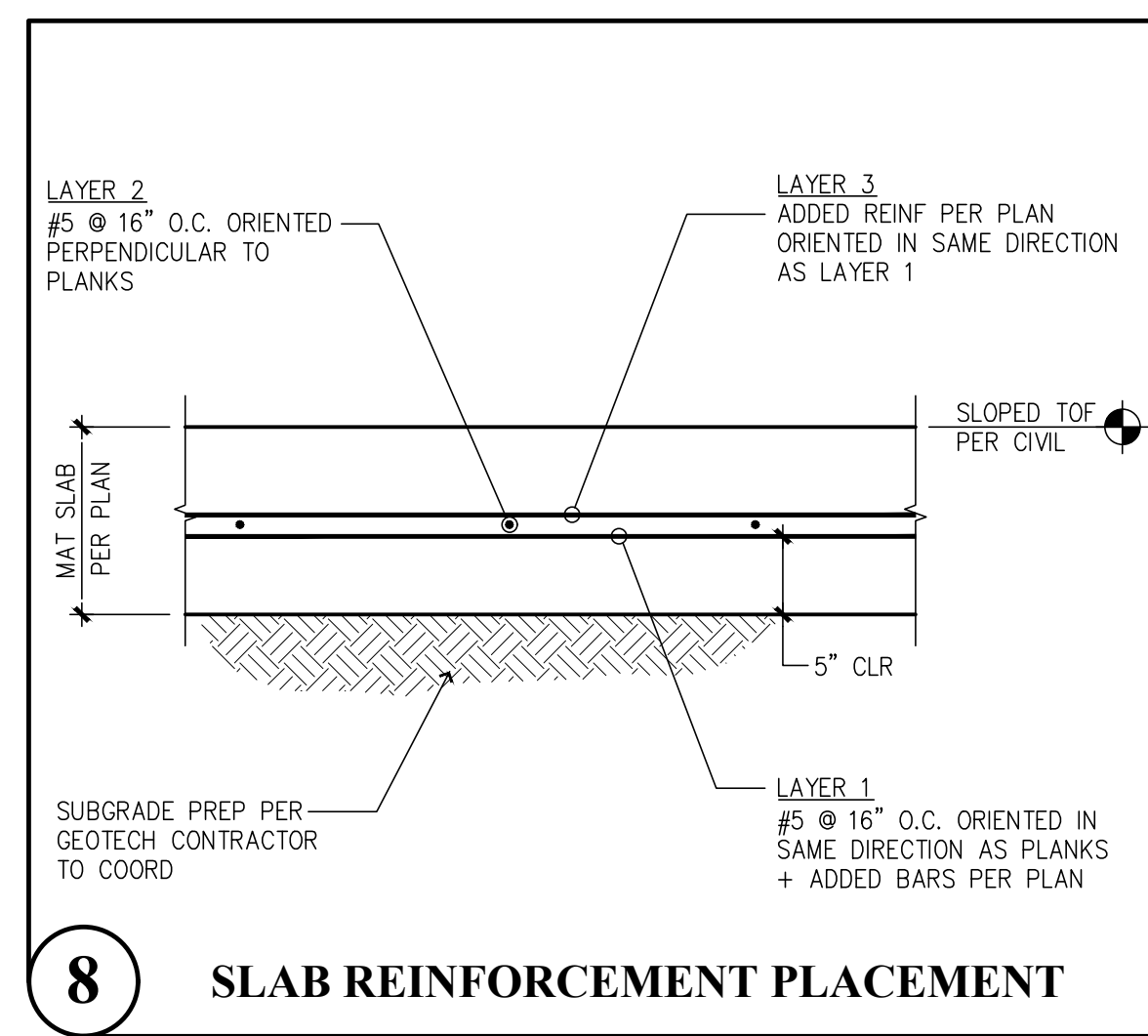
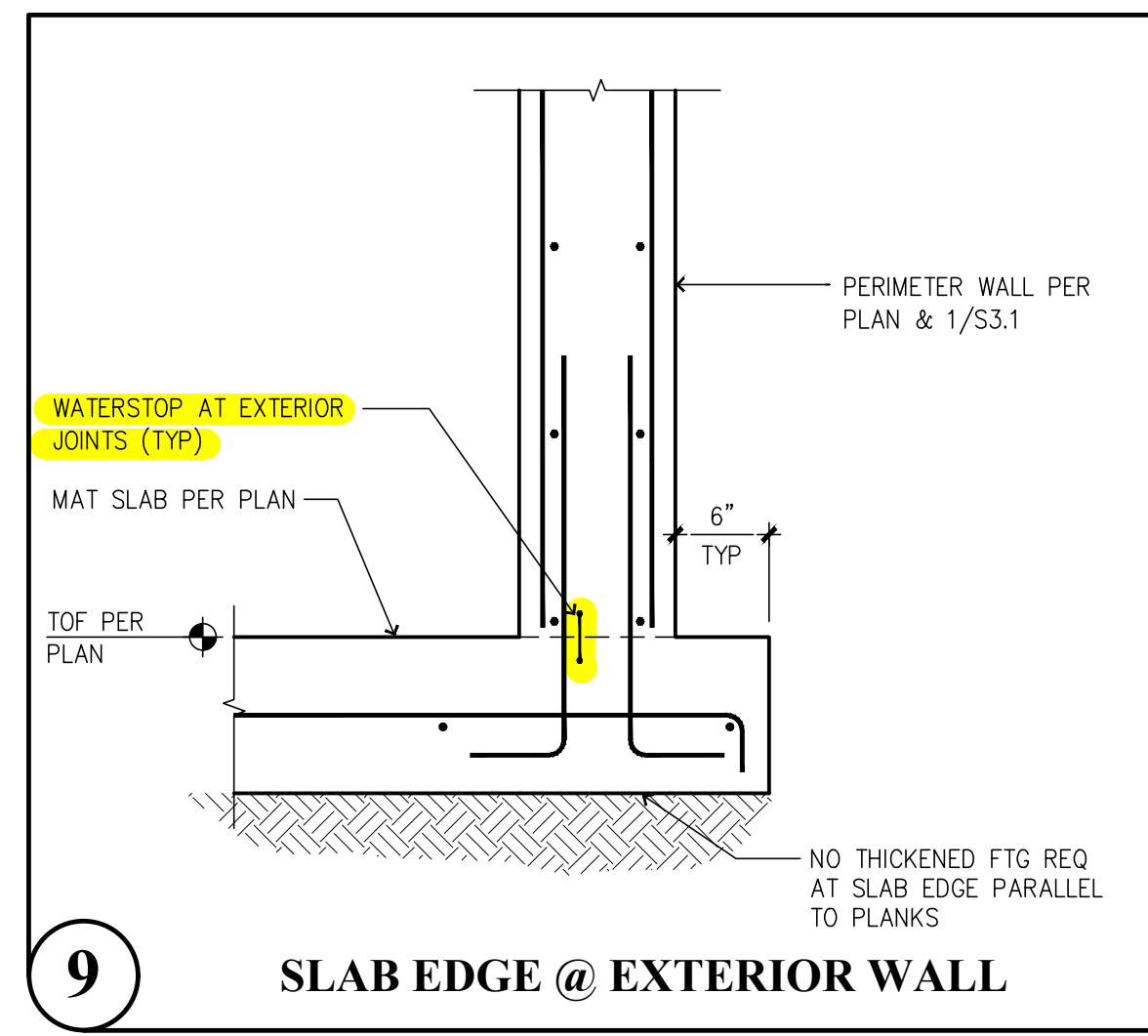
### Foundation Plan - Vault 3

SCALE 1/8"=1'-0"



CAD FILE: F:\Projects\2023 Projects\Drawings\Bradley Heights\Drawings\Detention\_Vault\S2.1.dwg PLOT DATE/TIME: 10/31/2024 10:16am THANK YOU FOR USING SOLUTIONS 4 STRUCTURES

CAD FILE: F:\Projects\2023 Projects\Bradley Heights\Drawings\Detention\_Vault\S3.0.dwg PLOT DATE/TIME: 10/30/2024 - 3:55pm THANK YOU FOR USING SOLUTIONS 4 STRUCTURES



Revisions to this sheet:

**Bradley Heights Apartments**  
 Detention Vaults 2, 3, & 4  
 202 27th Ave SE  
 Puyallup, Washington

**PRRWF20250235**

**Solutions 4 Structures**  
 A Structural Engineering Corporation

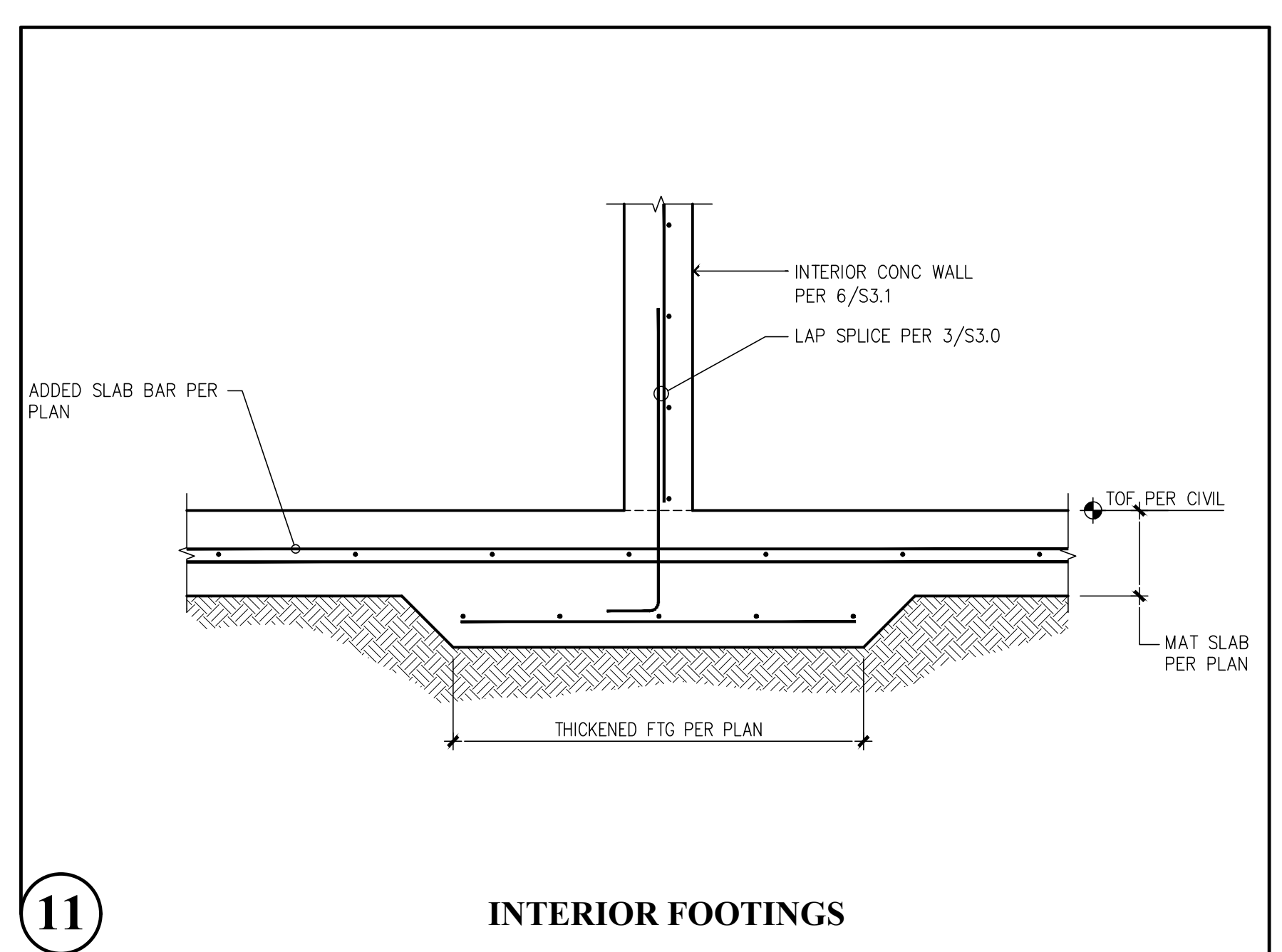
Puyallup, Washington 98374  
 Ph. 253-314-9822  
 www.solutions4structures.com

PROJECT NO. : 23-007  
 DESIGNED BY : MRO  
 DRAWN BY : RSO  
 ISSUE DATE : 8-16-24  
 LATEST REV. OF DWG. SET :

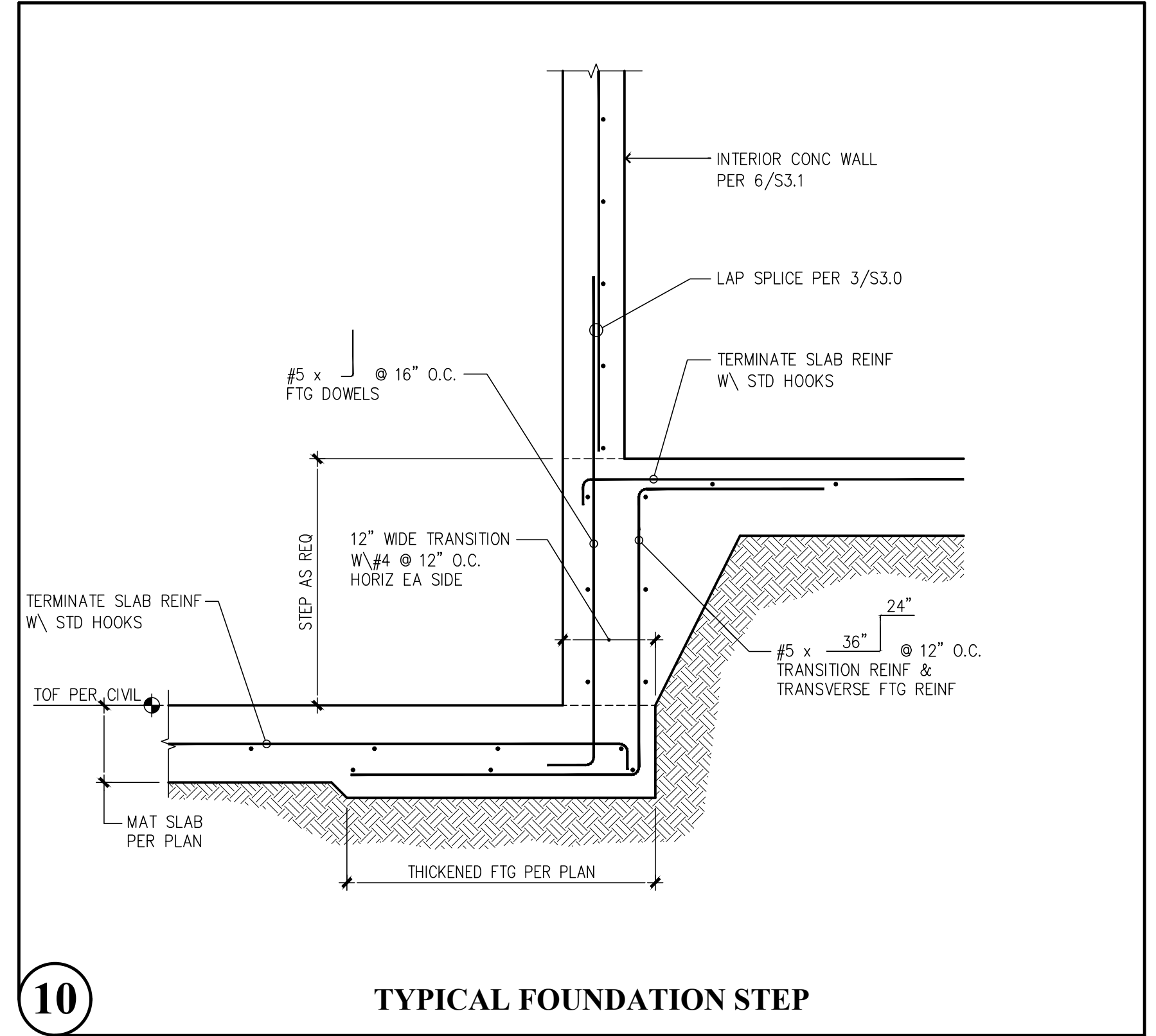
SUBMITTAL SET ONLY NOT FOR CONSTRUCTION  
 THESE DRAWINGS ARE SUBJECT TO REVISIONS PENDING LOCAL JURISDICTIONAL REVIEW.

PLOT DATE/TIME: 10/30/2024 10:23:46pm THANK YOU FOR USING SOLUTIONS 4 STRUCTURES

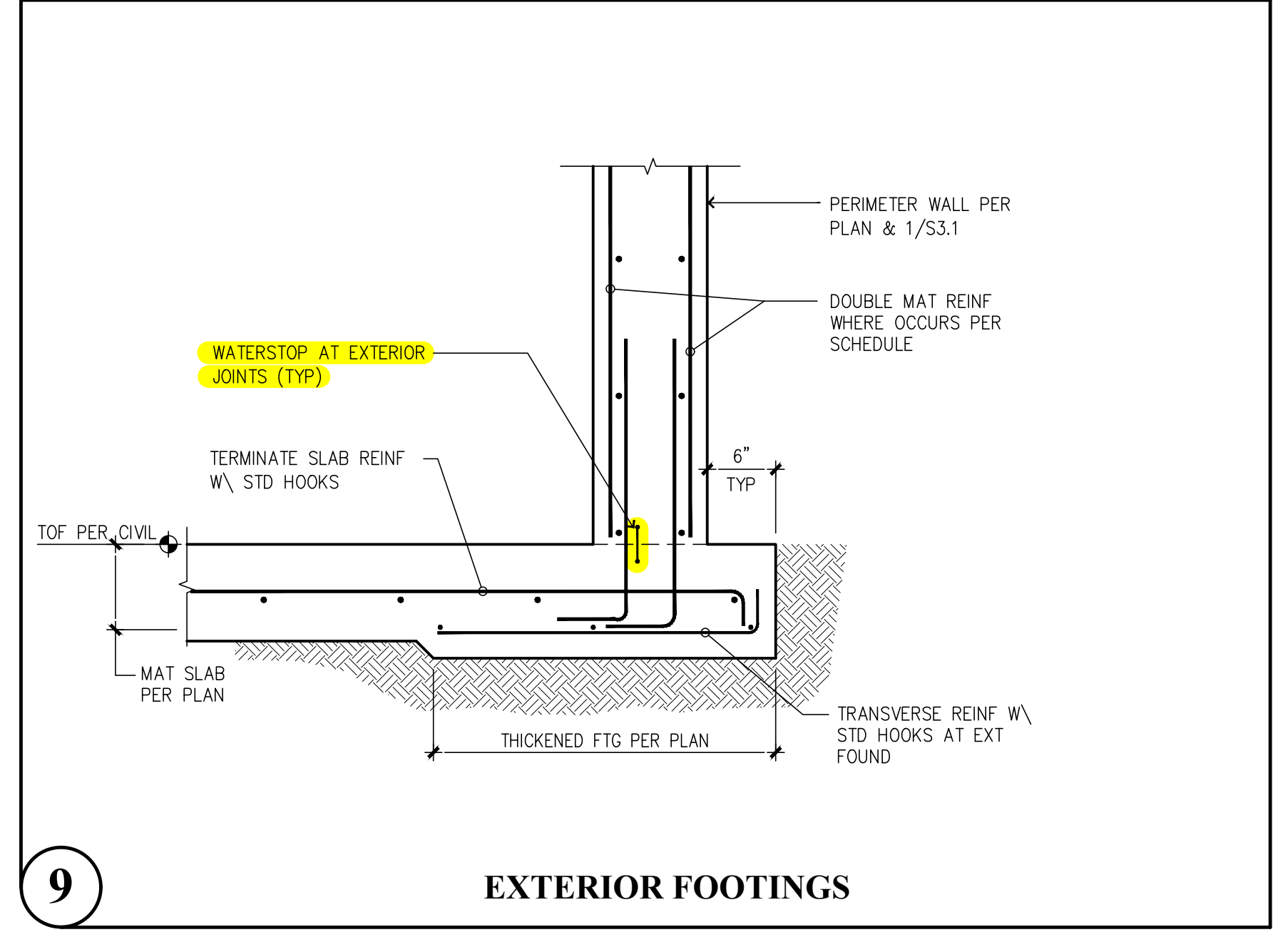
CAD FILE: F:\Projects\2023 Projects\23.007 Bradley Heights\Drawings\Detention\_Vault\S3.1.dwg



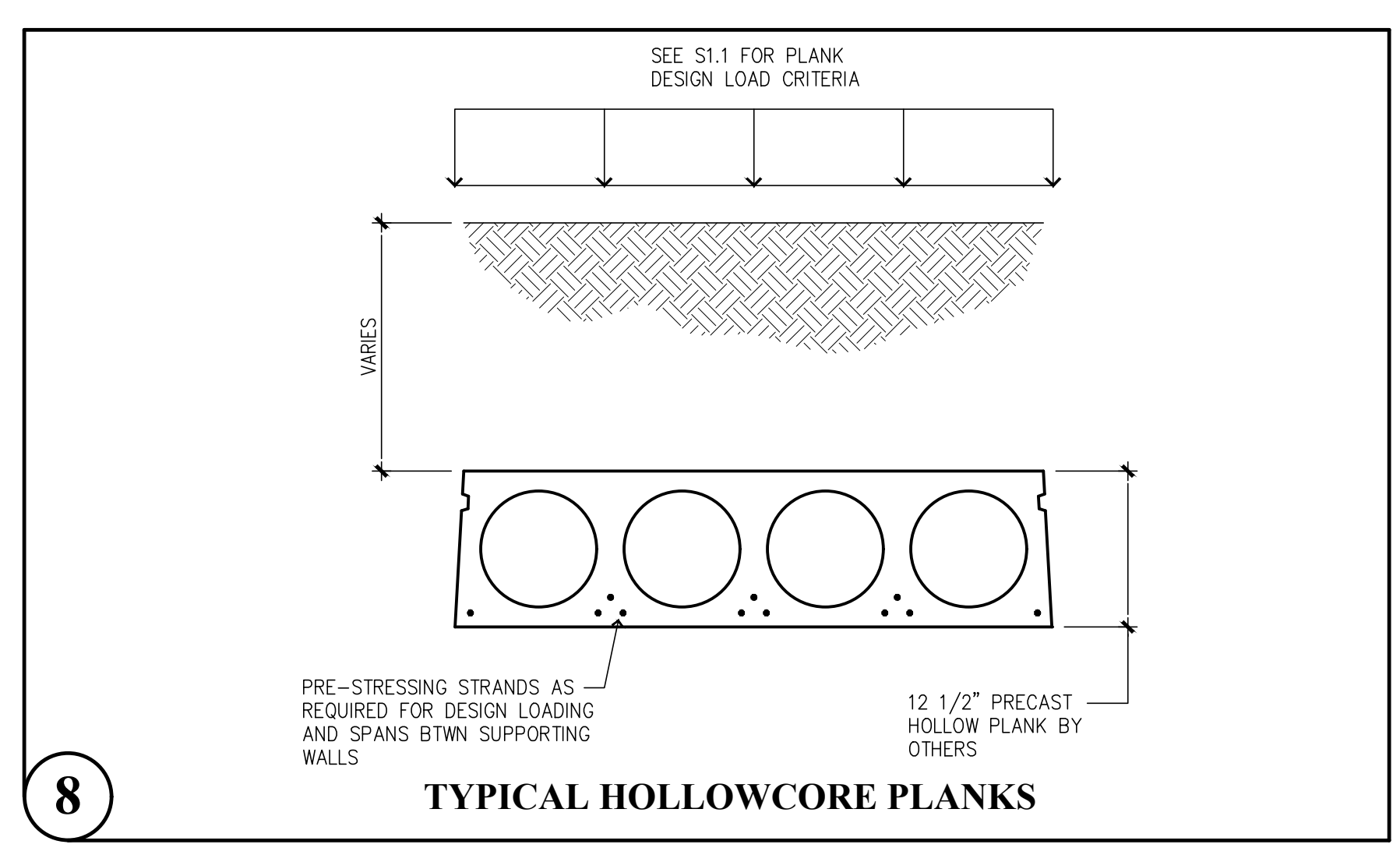
**11** INTERIOR FOOTINGS



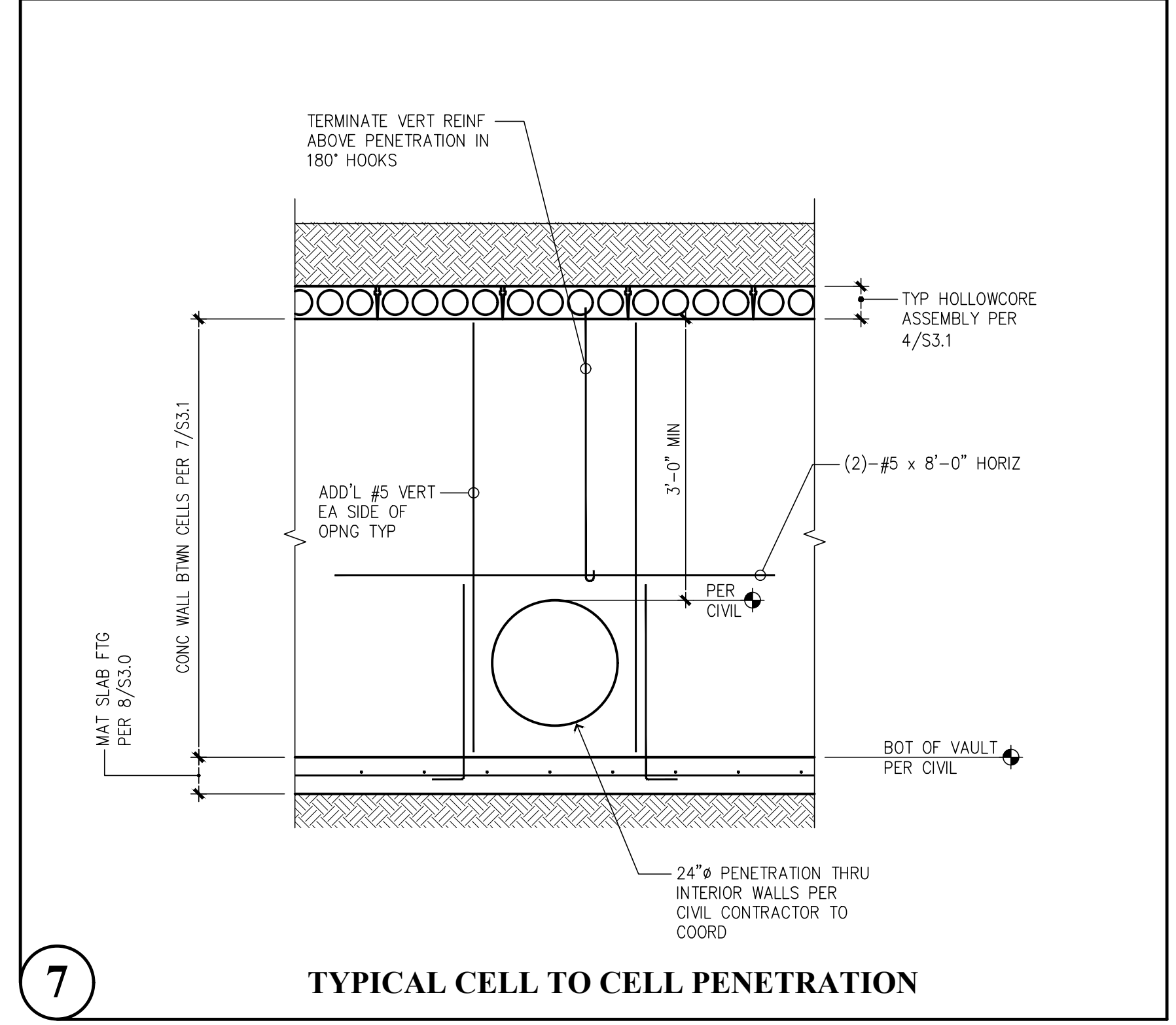
**10** TYPICAL FOUNDATION STEP



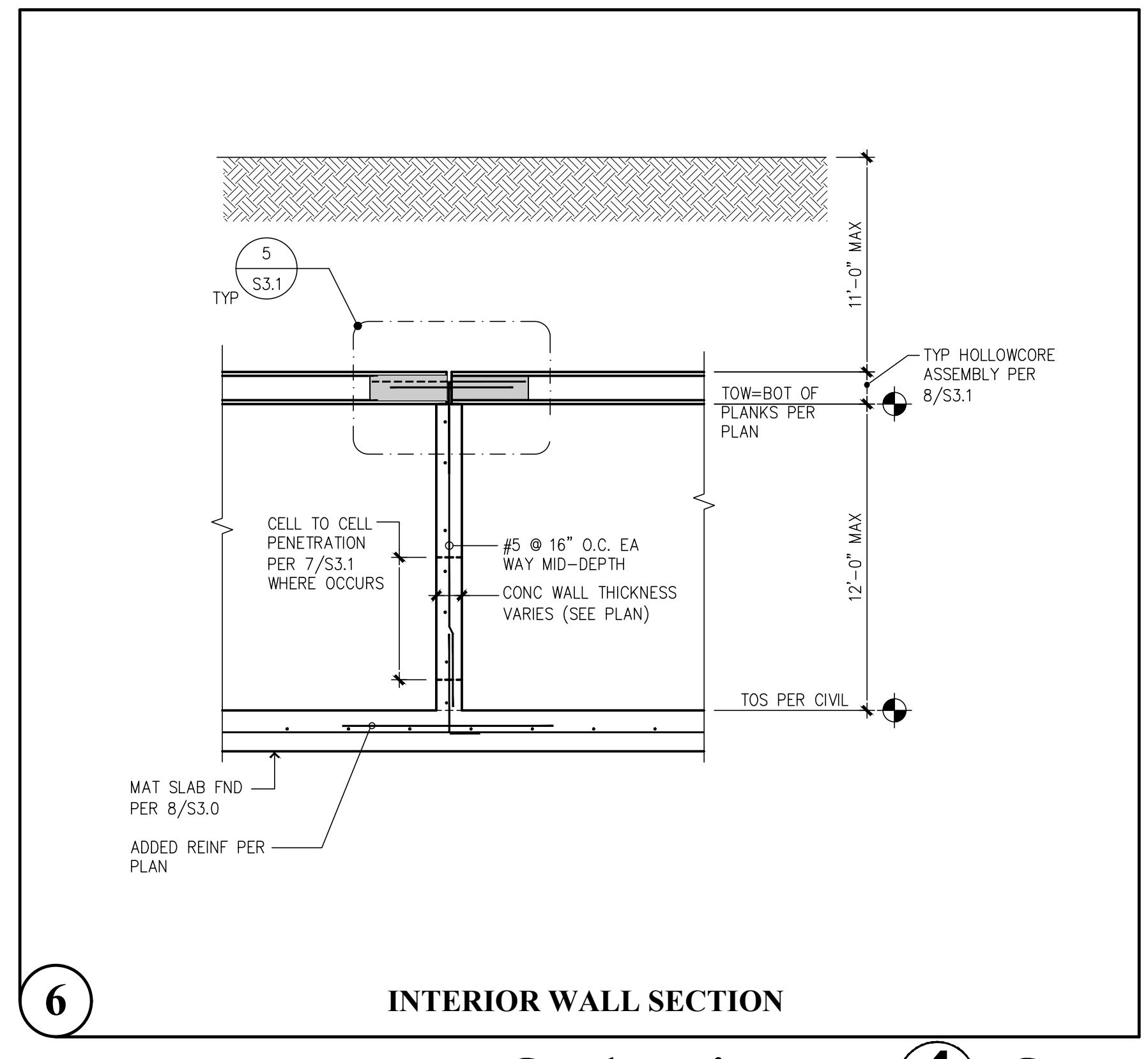
**9** EXTERIOR FOOTINGS



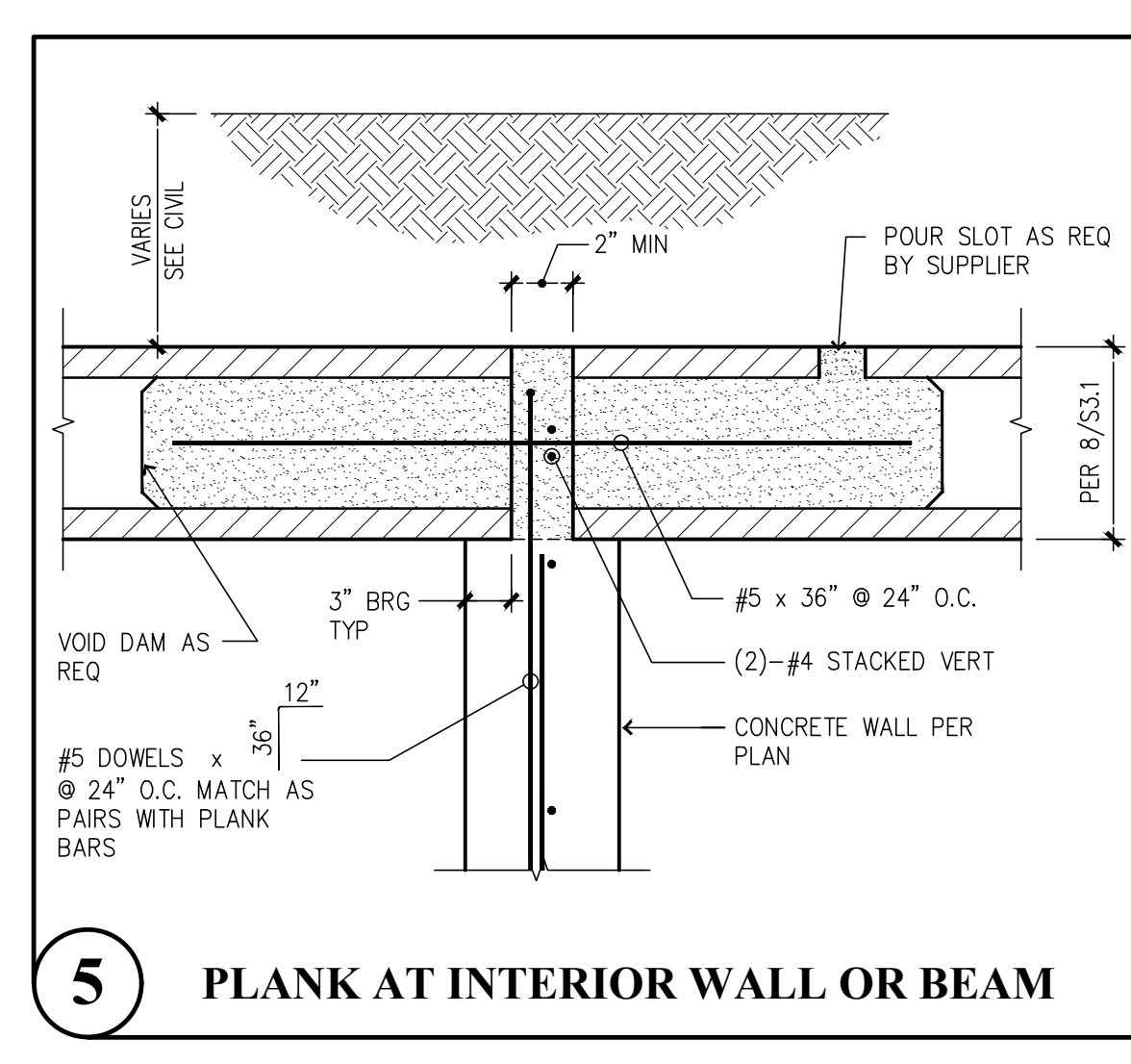
**8** TYPICAL HOLLOWCORE PLANKS



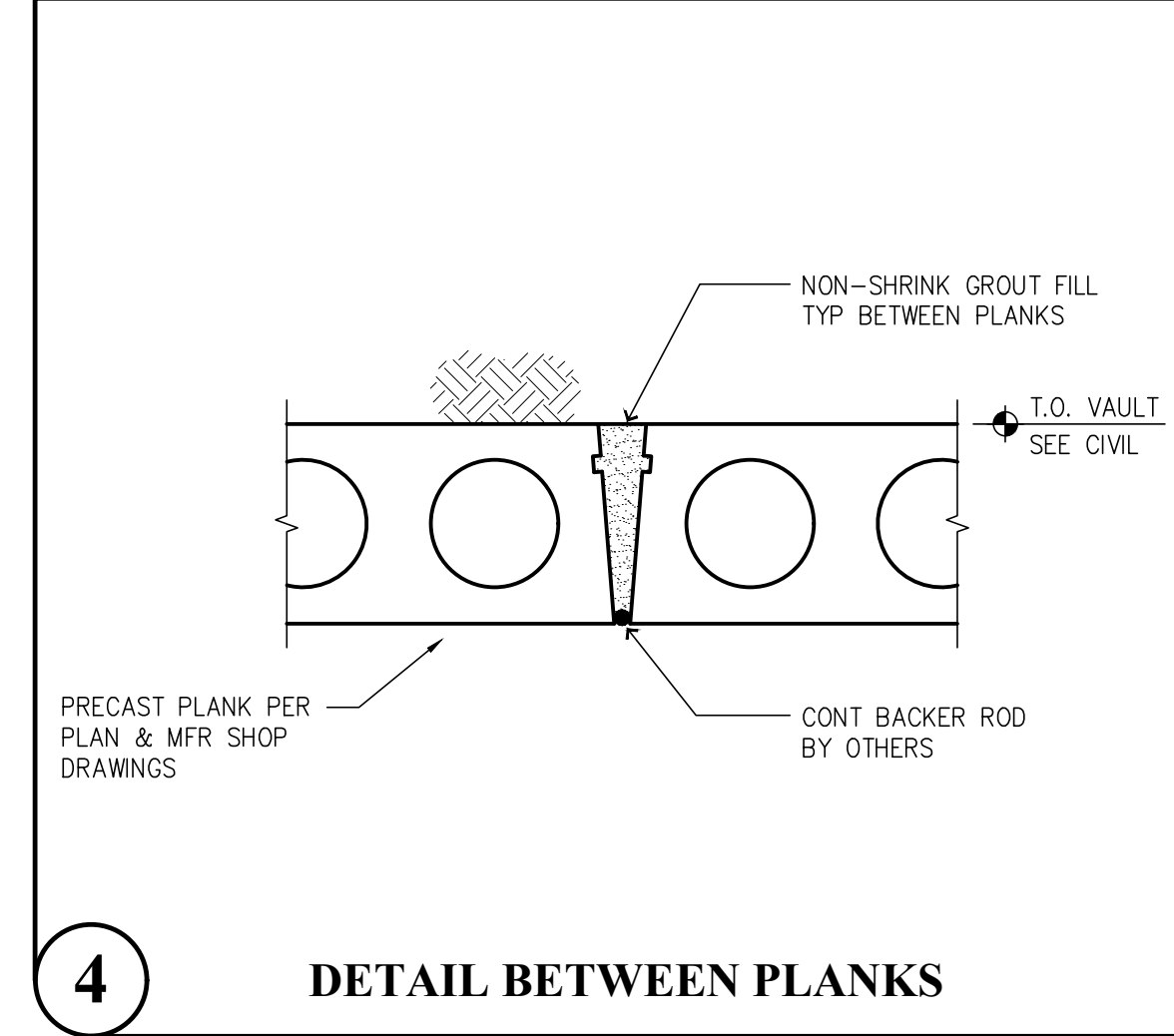
**7** TYPICAL CELL TO CELL PENETRATION



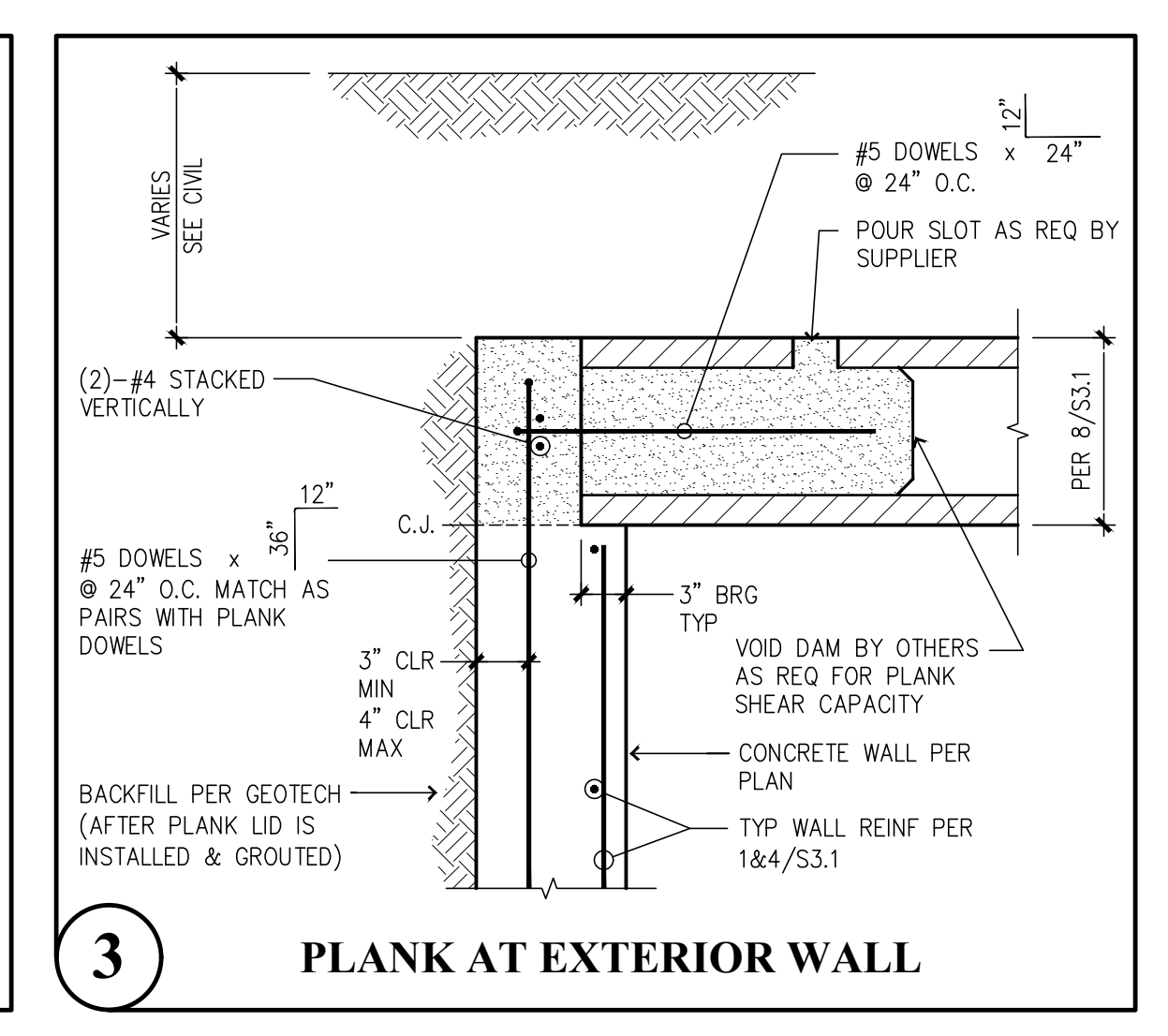
**6** INTERIOR WALL SECTION



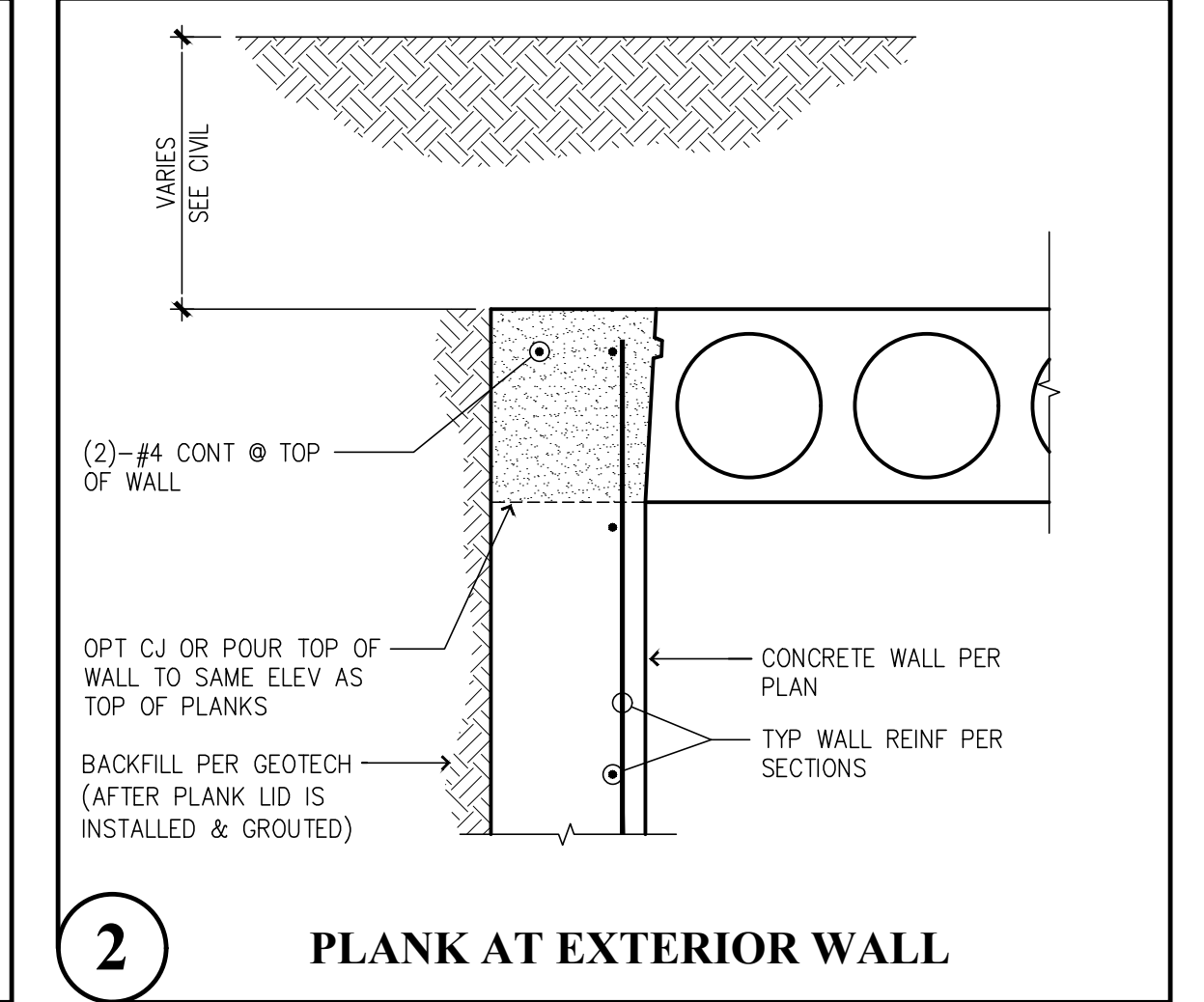
**5** PLANK AT INTERIOR WALL OR BEAM



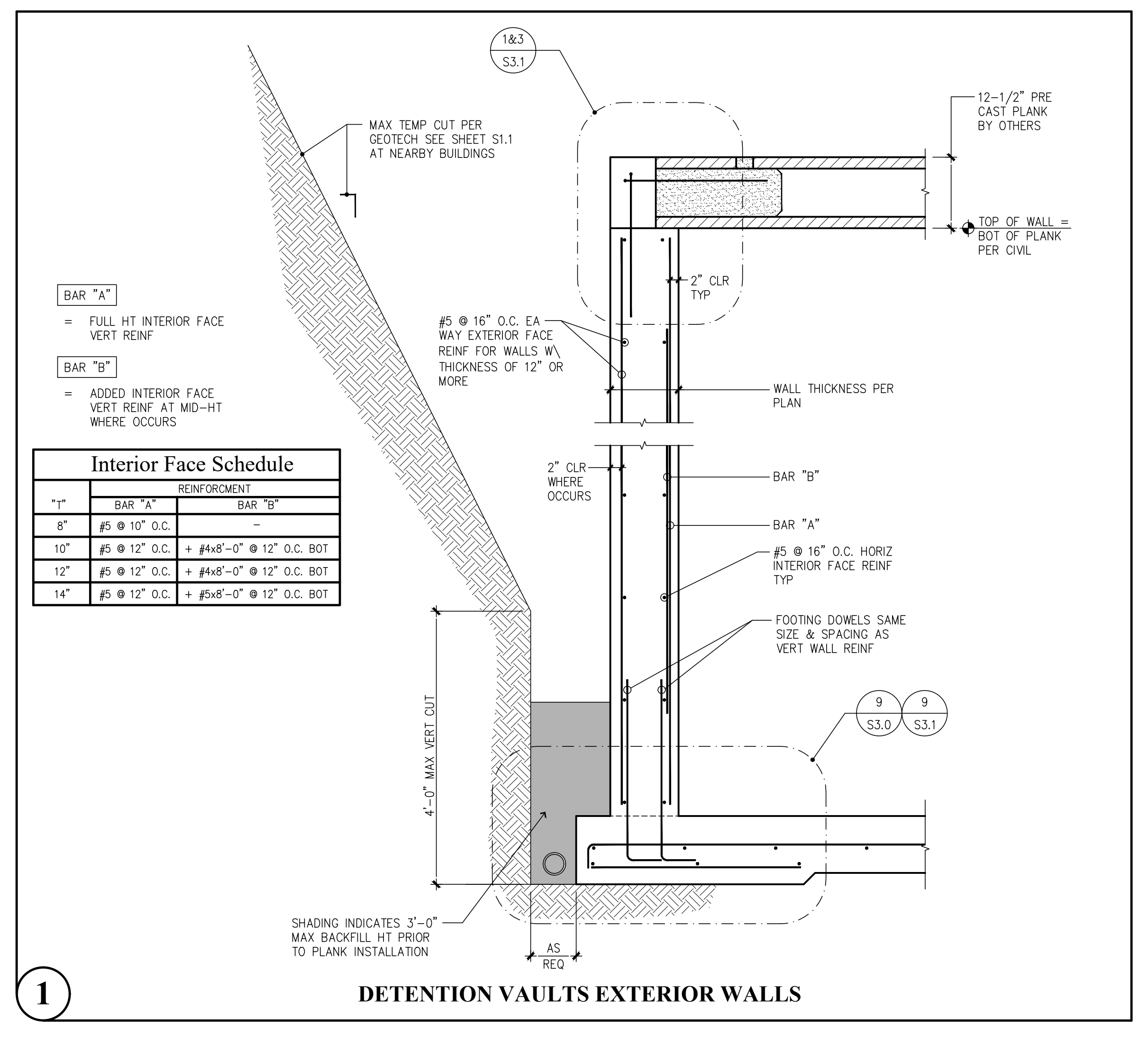
**4** DETAIL BETWEEN PLANKS



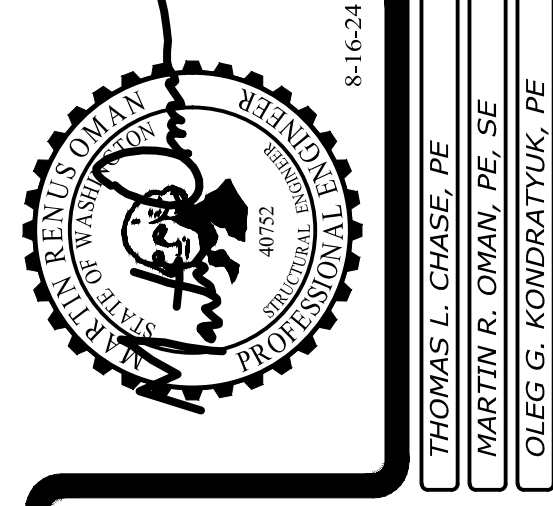
**3** PLANK AT EXTERIOR WALL



**2** PLANK AT EXTERIOR WALL



**1** DETENTION VAULTS EXTERIOR WALLS



Revisions to this sheet:

**Bradley Heights Apartments**  
 Detention Vaults 2, 3, & 4  
 202 27th Ave SE  
 Puyallup, Washington

**PRRWF20250235**

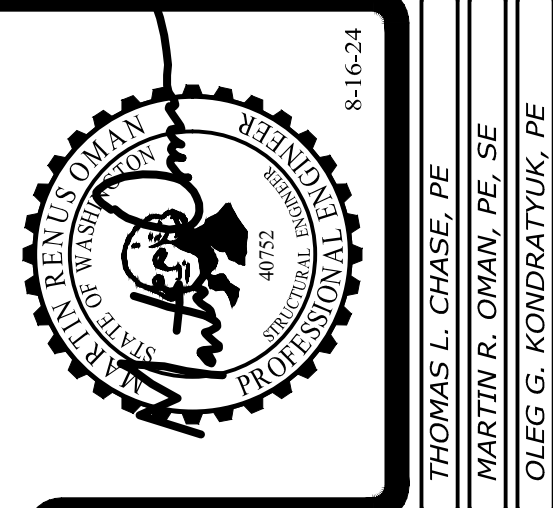
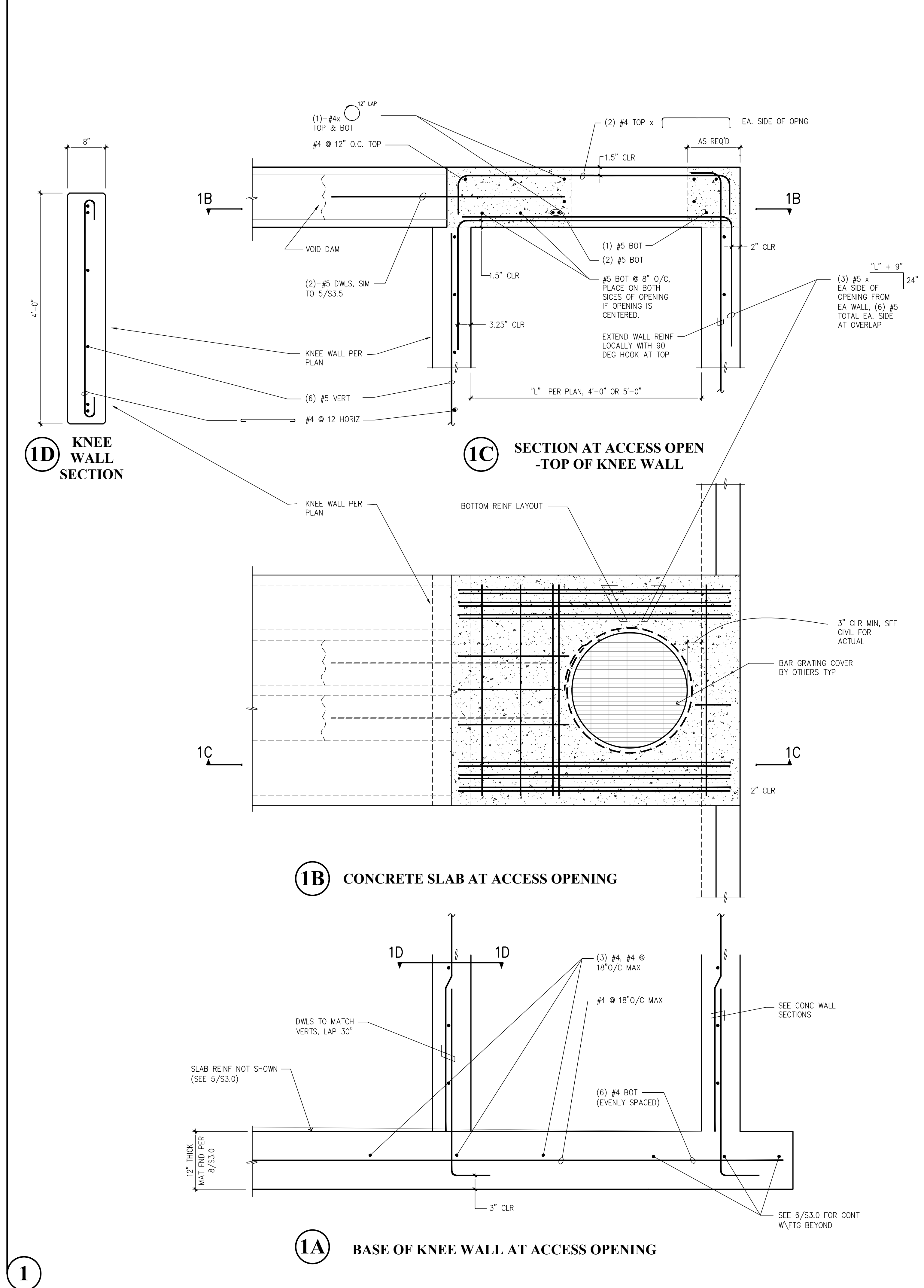
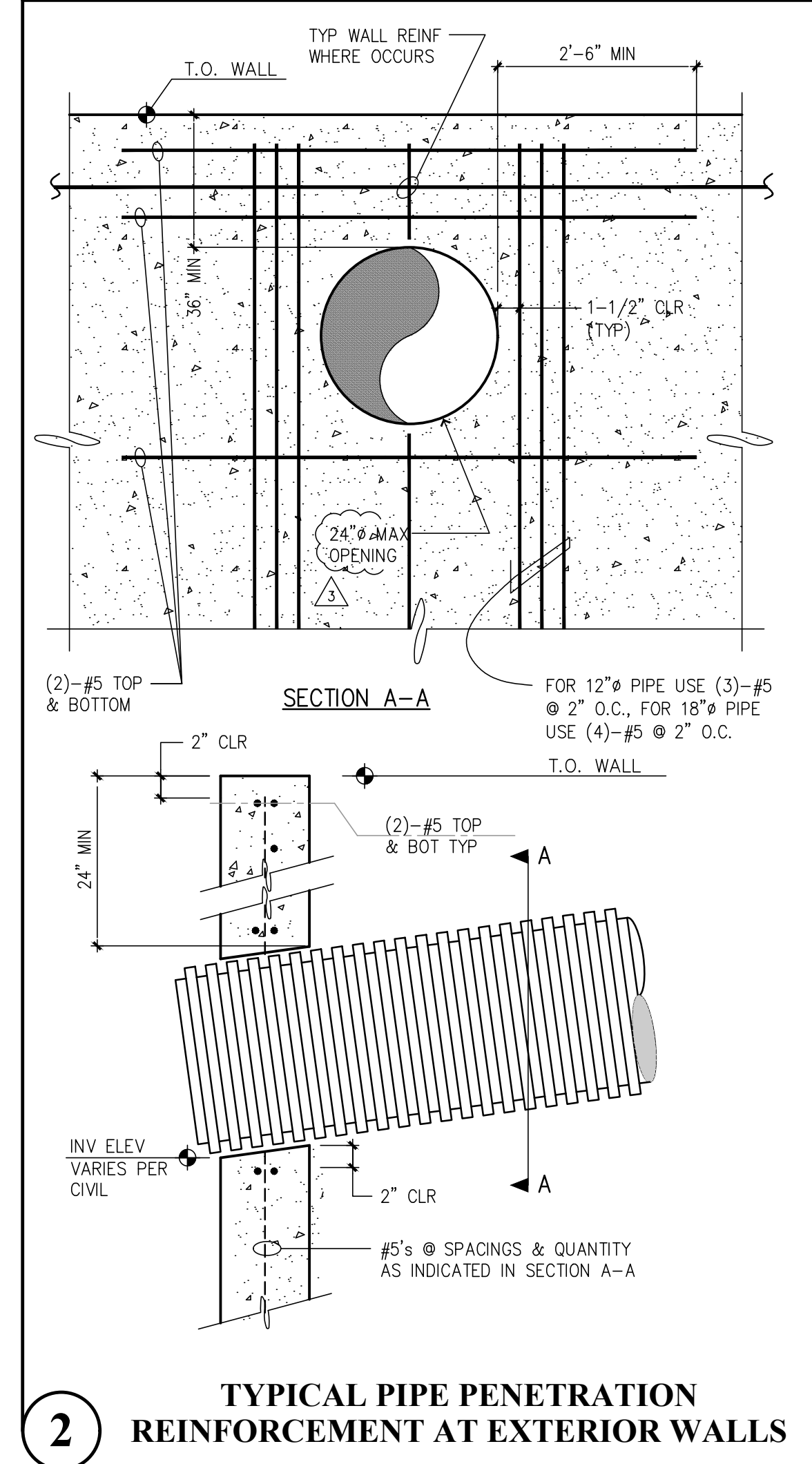
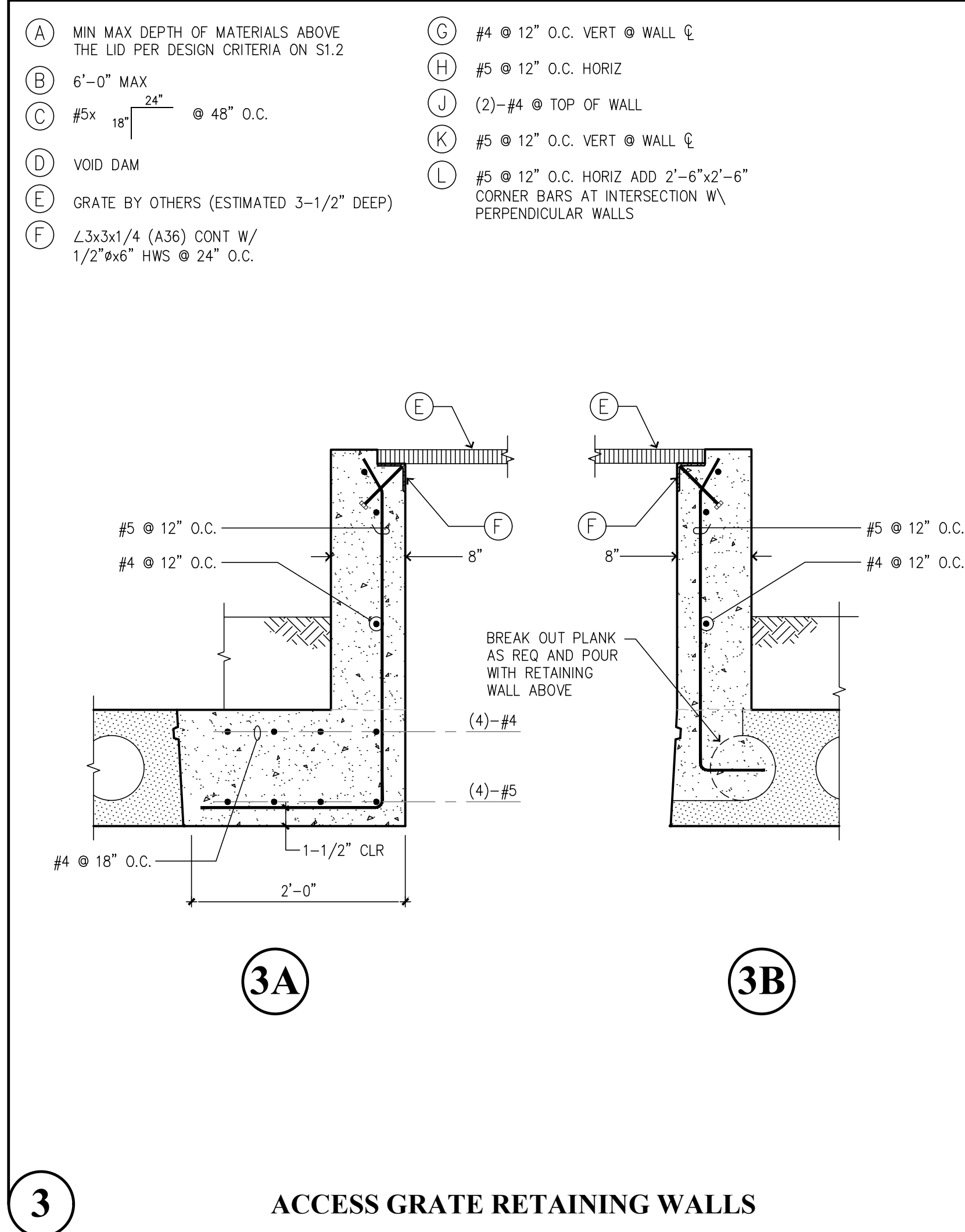
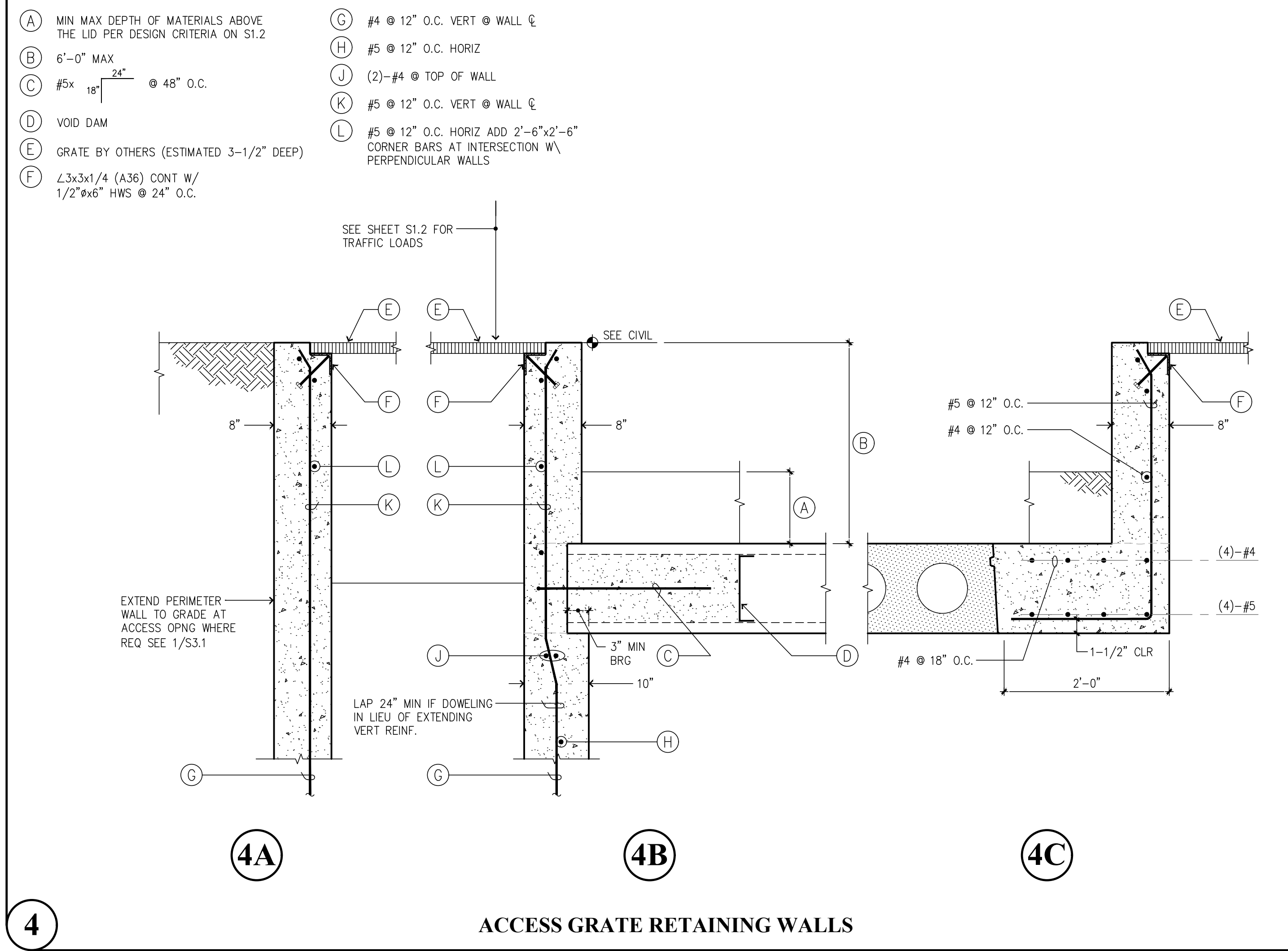
**Solutions 4 Structures**  
 A Structural Engineering Corporation

Puyallup, Washington 98374  
 Ph 253-314-9822  
 www.solutions4structures.com

PROJECT NO. : 23.007  
 DESIGNED BY : MRO  
 DRAWN BY : RSO  
 ISSUE DATE : 8-16-24  
 LATEST REV. OF DWG. SET :

SUBMITTAL SET ONLY NOT FOR CONSTRUCTION  
 THESE DRAWINGS ARE SUBJECT TO REVISIONS  
 PENDING LOCAL JURISDICTIONAL REVIEW.

CAD FILE: F:\Projects\2023 Projects\23.007 Bradley Heights\Drawings\Detention\_Vault\S3.2.dwg  
 PLOT DATE/TIME: 10/31/2024 - 8:35am THANK YOU FOR USING SOLUTIONS 4 STRUCTURES



Revisions to this sheet:

**Bradley Heights Apartments**  
 Detention Vaults 2, 3, & 4  
 202 27th Ave SE  
 Puyallup, Washington

**PRRWF20250235**

**Solutions 4 Structures**  
 A Structural Engineering Corporation

Puyallup, Washington 98374  
 Ph 253-314-9822  
 www.solutions4structures.com

PROJECT NO. : 23.007  
 DESIGNED BY : MRO  
 DRAWN BY : RSO  
 ISSUE DATE : 8-16-24  
 LATEST REV. OF DWG. SET :

SUBMITTAL SET ONLY NOT FOR CONSTRUCTION  
 THESE DRAWINGS ARE SUBJECT TO REVISIONS PENDING LOCAL JURISDICTIONAL REVIEW.