

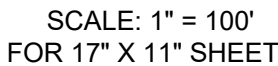
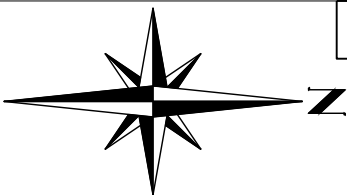
BY _____
CITY OF PUYALLUP
DEVELOPMENT ENGINEERING

DATE _____

NOTE: THIS APPROVAL IS VOID AFTER 180 DAYS FROM APPROVAL DATE. THE CITY WILL NOT BE RESPONSIBLE FOR ERRORS AND/OR OMISSIONS ON THESE PLANS. FIELD CONDITIONS MAY DICTATE CHANGES TO THESE PLANS AS DETERMINED BY THE DEVELOPMENT ENGINEERING MANAGER.



A PORTION OF THE SW 1/4 OF SECTION 26, TOWNSHIP 20 N, RANGE 4 E, W.M. PIERCE COUNTY, WA



LINE IS 1" AT
FULL SCALE

