

SOUTH MERIDIAN & 43RD AVE SE
4227 S MERIDIAN
SUITE E
PUYALLUP, WA 98373

Separate Electrical Permit is required with the Washington State Department of Labor & Industries.
<https://lni.wa.gov/licensing-permits/electrical/electrical-permits-fees-and-inspections/>
or call for Licensing Information:
1-800-647-0982

Approval of submitted plans is not an approval of omissions or oversights by this office or non compliance with any applicable regulations of local government. The contractor is responsible for making sure that the building complies with all applicable codes and regulations of the local government.

The approved construction plans, documents, and all engineering must be posted on the job at all inspections in a visible and readily accessible location.

Full sized legible color plans are required to be provided by the permittee on site for inspection.

**City of Puyallup
Building
REVIEWED
FOR
COMPLIANCE**

SKinnear
03/25/2025
12:56:04 PM



3

ADDENDUM - REVISION #3

ISSUE DATE: 03.12.2025

DESCRIPTION: REVISED DRAWINGS ARE PER FIELD COORDINATION REGARDING SITE CONDITIONS THAT REQUIRED THE (2) RTU'S TO RELOCATE.

SHEETS AFFECTED: G000, AD131, A131, M101, M102, E101, E301,S102, S201 .

THESE SUPPLEMENTAL INSTRUCTIONS MODIFY THE CONTRACT DOCUMENTS AND SHALL BE CARRIED OUT IN ACCORDANCE WITH THE CONTRACT WITHOUT CHANGE IN THE GMP OR CONTRACT TIME. PROCEEDING WITH THE WORK DESCRIBED BY THESE INSTRUCTIONS INDICATES THE CONTRACTOR'S ACCEPTANCE THAT THERE WILL BE NO CHANGE IN THE CMP OR CONTRACT TIME.

2

ADDENDUM - REVISION #2

ISSUE DATE: 02.11.2025

DESCRIPTION: REVISED DRAWINGS ARE PER PRE-CONSTRUCTION COORDINATION.

SHEETS AFFECTED: G000, AD131, A131, A141, A201, A401A, A401B.

THESE SUPPLEMENTAL INSTRUCTIONS MODIFY THE CONTRACT DOCUMENTS AND SHALL BE CARRIED OUT IN ACCORDANCE WITH THE CONTRACT WITHOUT CHANGE IN THE GMP OR CONTRACT TIME. PROCEEDING WITH THE WORK DESCRIBED BY THESE INSTRUCTIONS INDICATES THE CONTRACTOR'S ACCEPTANCE THAT THERE WILL BE NO CHANGE IN THE CMP OR CONTRACT TIME.

1

ADDENDUM - REVISION #1

ISSUE DATE: 02.07.2025

DESCRIPTION: REVISED DRAWINGS ARE OWNER REVISIONS.

SHEETS AFFECTED: G000, A121, A520

THESE SUPPLEMENTAL INSTRUCTIONS MODIFY THE CONTRACT DOCUMENTS AND SHALL BE CARRIED OUT IN ACCORDANCE WITH THE CONTRACT WITHOUT CHANGE IN THE GMP OR CONTRACT TIME. PROCEEDING WITH THE WORK DESCRIBED BY THESE INSTRUCTIONS INDICATES THE CONTRACTOR'S ACCEPTANCE THAT THERE WILL BE NO CHANGE IN THE CMP OR CONTRACT TIME.

ISSUED - 11.13.2024

SCOPE OF WORK - ALTERATION LEVEL 1

NO CHANGES PROPOSED FOR BUILDING TYPE OR OCCUPANCY GROUP.

1. NEW

• FIXTURE, FURNITURE, EQUIPMENT AND GRAPHICS

• INTERIOR PARTITIONS AND DOORS

• FINISHES IN ALL AREAS

• CEILING IN ALL AREAS

• LIGHTING IN ALL AREAS

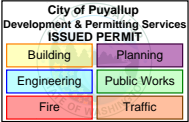
• PLUMBING FIXTURES

• ELECTRICAL SYSTEM

• MECHANICAL SYSTEM

• FIRE SAFETY EQUIPMENT

• EGRESS



T Mobile®

12920 SE 38TH STREET
BELLEVUE, WA 98006
www.T-Mobile.com

PRCTI20241902

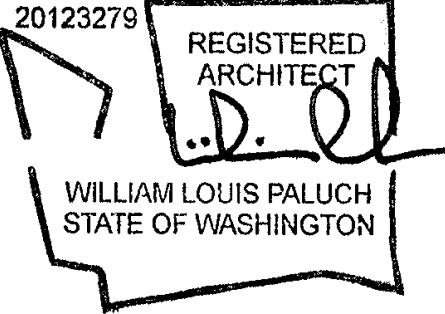
COPYRIGHT NOTICE:
THESE DRAWINGS AND SPECIFICATIONS ARE COPYRIGHTED AND SUBJECT TO COPYRIGHT PROTECTION AS ANY ARCHITECTURAL WORK UNDER SEC. 102 OF THE COPYRIGHT ACT, 17 U.S.C. AS AMENDED JANUARY 2002. THE PROTECTION INCLUDES, WITHOUT LIMITATION, THE PREVENTING FROM REPRODUCTION AND COMMERCIAL USE OF THESE DRAWINGS AND SPECIFICATIONS. ANY VIOLATION OF THIS PROTECTION, UNAUTHORIZED USE OF THESE DRAWINGS AND SPECIFICATIONS MAY RESULT IN CREATION OF CONSTRUCTION, BUILDING, RESUME, AND/OR MONETARY LIABILITY.

SOUTH MERIDIAN & 43RD
AVE SE
4227 S MERIDIAN
SUITE E
PUYALLUP, WA 98373

DESIGN TYPE:
CORPORATE NEW CD
E1Y

8022

PROTOTYPE RELEASE: DCD:



03/12/2025

FUZION

20551 N. PIMA ROAD
SUITE 200
SCOTTSDALE, AZ 85255

design@fuzionad.com
(480) 463-4764
www.fuzionad.com

#	DESCRIPTION:	DATE
1	PORTAL/ BAFFLE ASI	02.07.2025
2	PRE-CONSTRUCTION COORDINATION	02.12.2025
3	RTU RELOCATION	03.12.2025

DATE: 11/13/2024
DRAWN BY: BC

COVER SHEET

G000

C

B

A

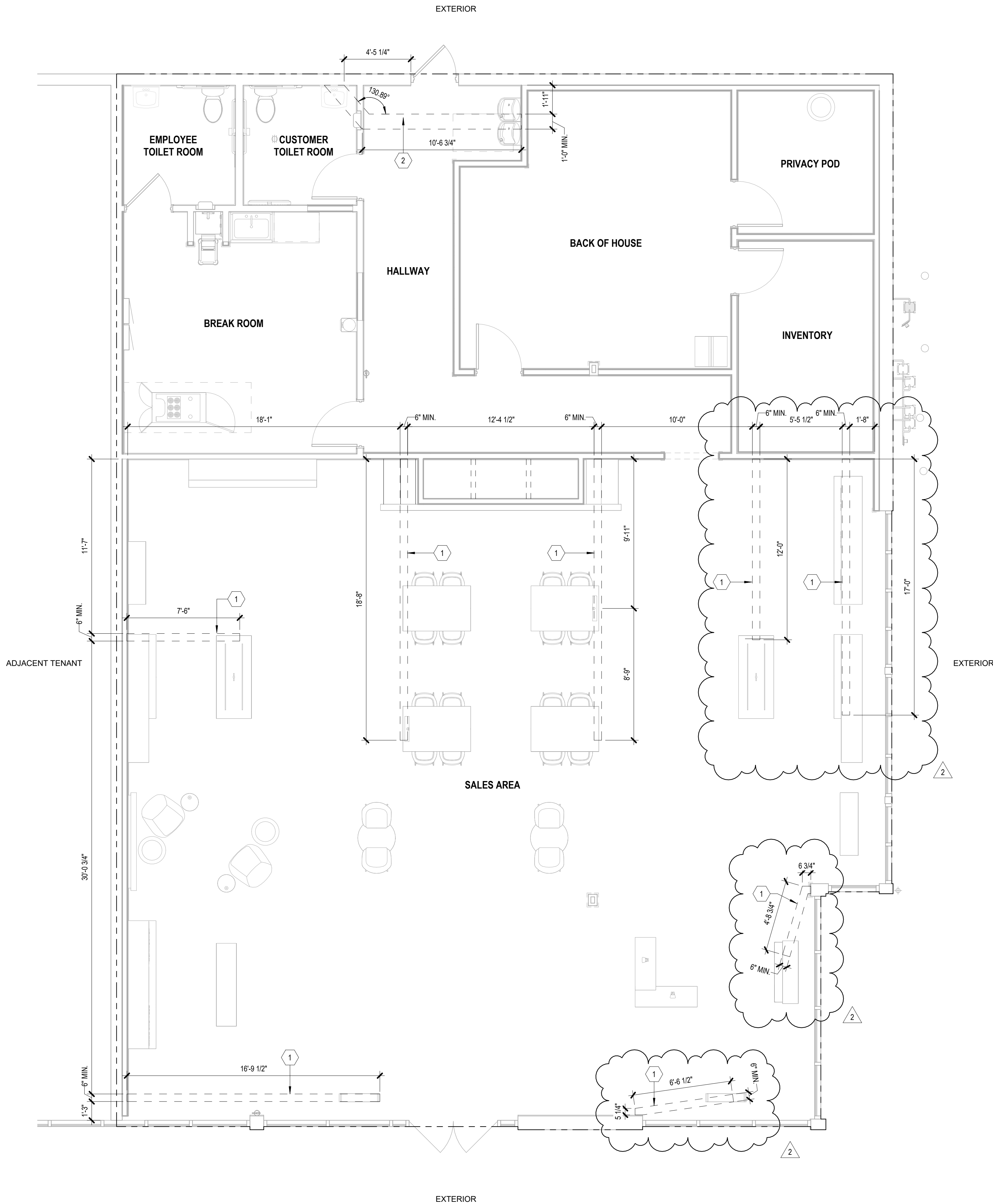
KEY NOTES

SLAB PENETRATIONS SHALL BE MADE WITH PROPER LOCATION AND X-RAY IDENTIFICATION OF EXISTING REBAR AND / OR POST TENSION CABLES.

NOTES	
1	DIMENSIONS TO GIVE LOCATION OF TRENCH/CORE DRILL. SEE SHEET A501 FOR ADDITIONAL TRENCH/SLAB INFORMATION. SEE SHEET E101 FOR CONDUIT DETAILS AND LOCATION.
2	SAW CUT EXISTING CONCRETE SLAB FOR NEW SUPPLY/WASTE TO DRINKING FOUNTAIN. GC SHALL XRAY SLAB TO LOCATE ANY REBAR AND SHALL OBTAIN LANDLORD APPROVAL PRIOR TO COMMENCING ANY WORK. ALL ROUGH-INS TO BE DETERMINED IN FIELD WITH PLUMBING SUB-CONTRACTOR USING EXACT PLUMBING FIXTURE SPECIFICATIONS. REPAIR CONCRETE SLAB AS REQUIRED, SEE DETAIL A2/A501 AND PLUMBING SHEETS FOR MORE INFORMATION.

GENERAL NOTES

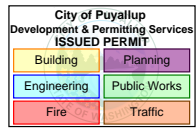
- CHECK MECHANICAL AND ELECTRICAL DRAWINGS PRIOR TO DEMOLITION WITH REGARD TO UTILIZING ANY EXISTING WIRING, LINES, COMPONENTS, ETC.
- NOTIFY ARCHITECTS IMMEDIATELY OF ANY DISCREPANCIES OR UNFORESEEN ITEMS NOT SHOWN ON THE DRAWINGS.
- ALL REMOVED MATERIAL AND DEBRIS, NOT OTHERWISE DESIGNATED, BECOMES THE PROPERTY OF THE CONTRACTOR, WHO SHALL REMOVE IT FROM THE SITE.
- SAW-CUTTING SHOWN ON PLANS IS AN INDICATION OF THE INTENDED WORK FOR BIDDING AND COORDINATION PURPOSES ONLY. IT IS NOT INTENDED TO BE FOR SPECIFICATION OR METHOD.



A3

SAW-CUTTING DEMOLITION PLAN

1/4" = 1'-0"



T Mobile

12920 SE 38TH STREET
BELLEVUE, WA 98006
www.T-Mobile.com

PRCTI20241902

COPYRIGHT NOTICE
THESE DRAWINGS AND SPECIFICATIONS ARE COPYRIGHTED AND SUBJECT TO COPYRIGHT PROTECTION AS ANY ARCHITECTURAL WORK UNDER SEC. 102 OF THE COPYRIGHT ACT, 17 U.S.C. AS AMENDED JANUARY 2002. THIS PROTECTION INCLUDES, WITHOUT LIMITATION, THE EXPRESS OR IMPLIED AUTHORITY TO REPRODUCE OR TRANSMIT IN ANY FORM OR BY ANY MEANS, ELECTRONIC OR MECHANICAL, INCLUDING PHOTOCOPYING, RECORDING, OR BY ANY INFORMATION STORAGE AND RETRIEVAL SYSTEM, WITHOUT THE WRITTEN PERMISSION OF THE ARCHITECT. ANY UNAUTHORIZED USE OF THESE DRAWINGS AND SPECIFICATIONS MAY RESULT IN CREATION OF CONSTRUCTION, BUILDING, OR OTHER LIABILITY.

SOUTH MERIDIAN & 43RD

AVE SE

4227 S MERIDIAN

SUITE E

PUYALLUP, WA 98373

DESIGN TYPE: E1Y
PROJECT TYPE: CORPORATE NEW CD

8022

PROTOTYPE RELEASE:

DCD:

20123279

REGISTERED
ARCHITECT
WILLIAM LOUIS PALUCH
STATE OF WASHINGTON

03/12/2025

FUZION

20551 N. PIMA ROAD
SUITE 200
SCOTTSDALE, AZ 85255

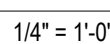
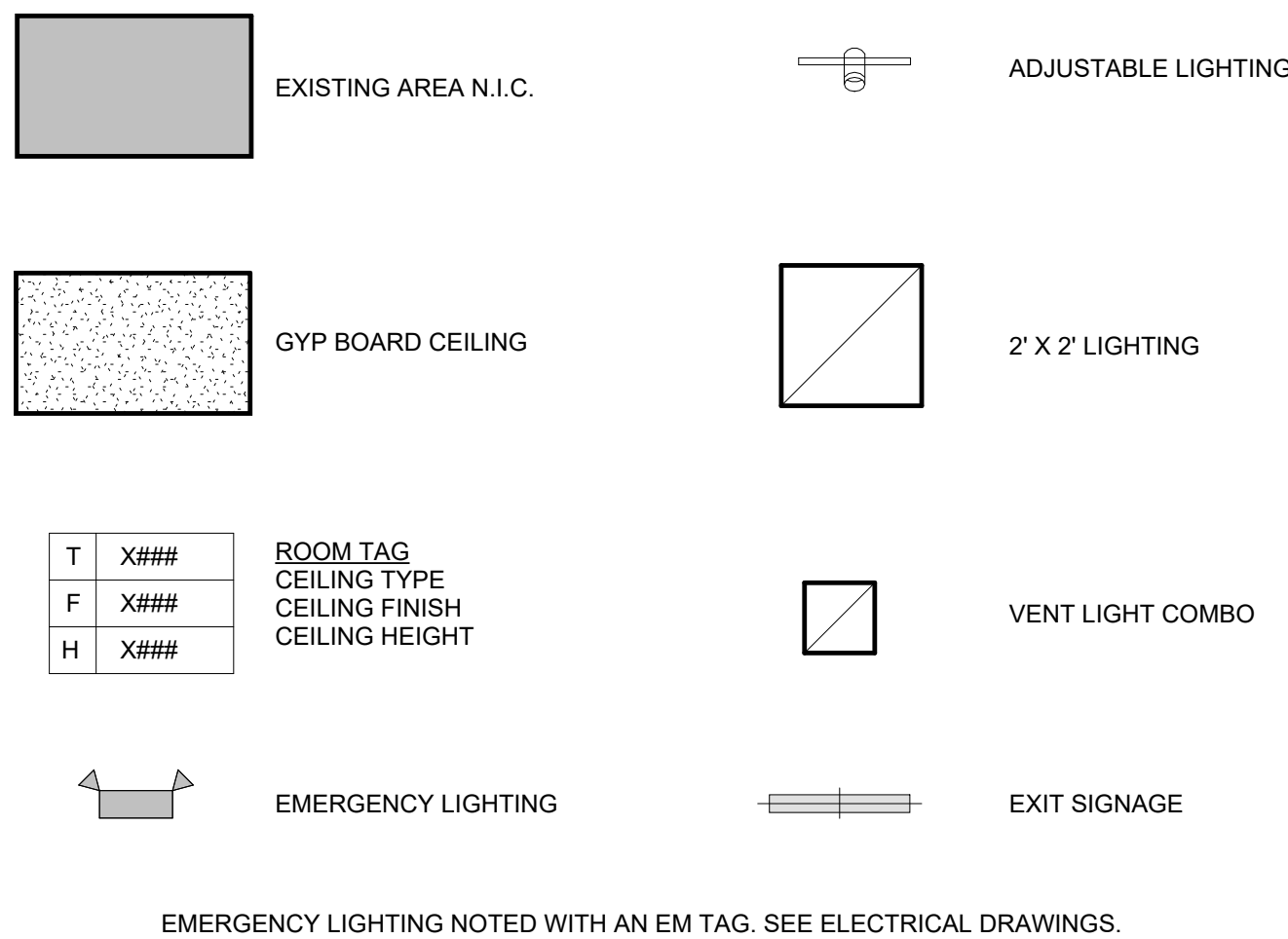
design@fuzionad.com
(480) 463-4764
www.fuzionad.com

#	DESCRIPTION:	DATE
2	PRE-CONSTRUCTION COORDINATION	02.12.2025

DATE: 11/13/2024
DRAWN BY: BC

SAW-CUTTING DEMOLITION PLAN

AD131



C

B

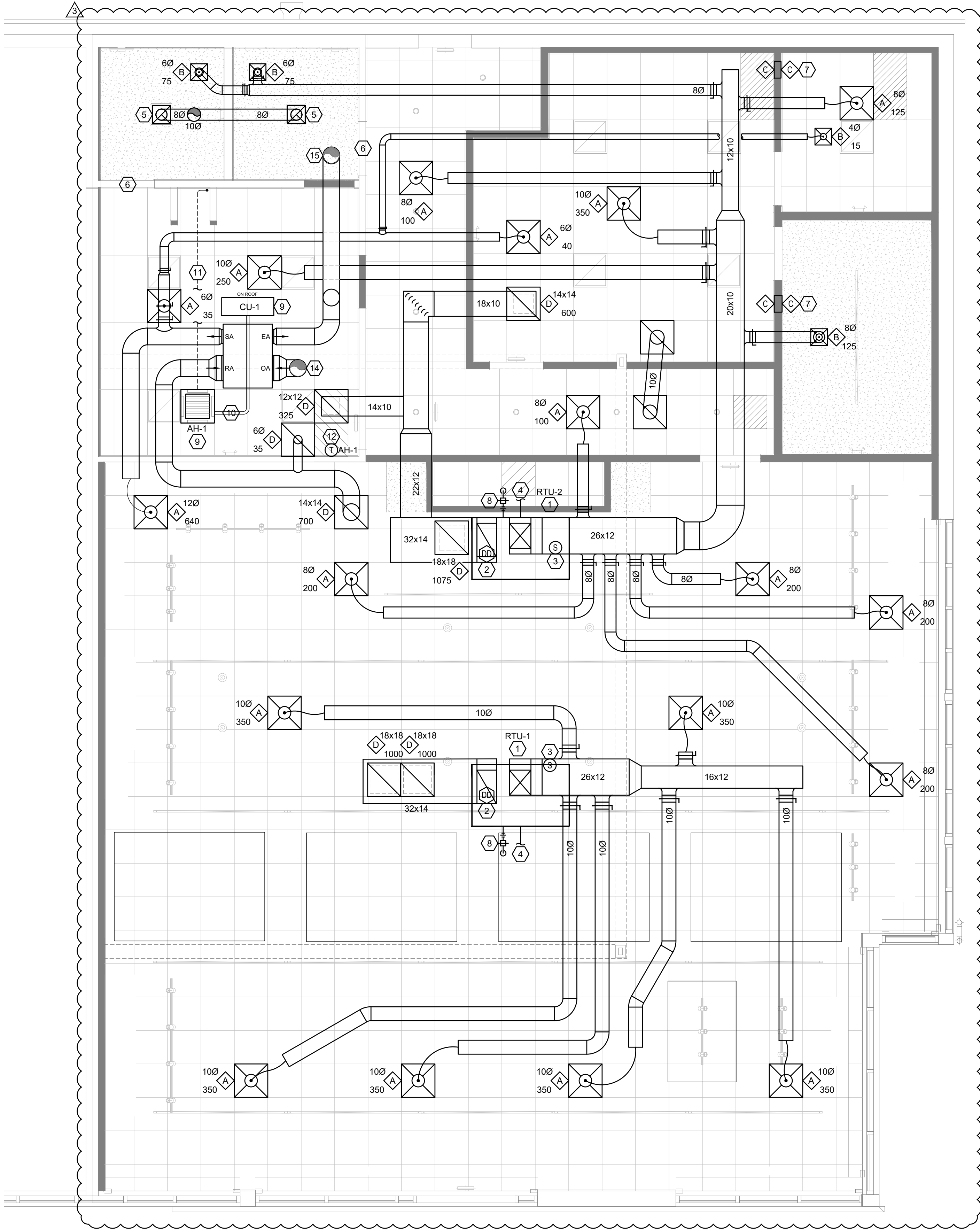
A

FIELD VERIFY ALL CONDITIONS

DESIGN DRAWINGS ARE DIAGRAMMATIC. CONTRACTOR SHALL VISIT THE SITE PRIOR TO BIDDING OR AWARD OF CONTRACT TO INSPECT EXISTING FIELD CONDITIONS. CONTRACT SHALL INCLUDE ALL LABOR AND MATERIALS NECESSARY FOR FIELD MODIFICATIONS DUE TO EXISTING CONDITIONS WHERE EXISTING CONDITIONS EXIST THAT PREVENT COMPLETION OF WORK. CONTRACTOR SHALL NOTIFY ENGINEER OF RECORD.

THE CONTRACTOR SHALL CONTACT THE ARCHITECT, ENGINEER OR OWNER PRIOR TO BIDDING FOR INTERPRETATIONS AND CLARIFICATIONS OF THE DESIGN AND INCLUDE IN HIS BID ALL COSTS TO MEET THE DESIGN INTENT. CLARIFICATIONS MADE BY THE ARCHITECT, ENGINEER OR OWNER AFTER BIDDING WILL BE FINAL AND SHALL BE IMPLEMENTED AT CONTRACTOR'S COST.

BIDDING CONTRACTORS SHALL HAVE A WORKING KNOWLEDGE OF LOCAL CODES AND ORDINANCES AND SHALL INCLUDE IN THEIR BIDS THE COSTS FOR ALL WORK INSTALLED IN STRICT ACCORDANCE WITH GOVERNING CODES. THE PLANS AND SPECIFICATIONS NOT WITHSTANDING, THE CONTRACTOR SHALL ALERT ARCHITECT, ENGINEER OR OWNER OF ANY APPARENT DISCREPANCIES BETWEEN GOVERNING CODES AND DESIGN INTENT.



A3

MECHANICAL FLOOR PLAN

1/4" = 1'-0"

KEYED NOTES

##	NOTES
1	NEW ROOFTOP UNIT. CONNECT NEW DUCTWORK TO SUPPLY AND RETURN DROPS DOWN THRU ROOF. VERIFY EXACT LOCATION IN FIELD.
2	PROVIDE NEW DUCT MOUNTED SMOKE DETECTOR WITH REMOTE TEST STATION IN THE RETURN DUCT UPSTREAM OF ANY FILTERS. DETECTOR SHALL SHUT DOWN UNIT UPON DETECTION OF SMOKE. INSTALL REMOTE TEST STATION IN CEILING GRID BENEATH UNIT.
3	INSTALL OWNER SUPPLIED ENTOUCH ONE MASTER CONTROLLER THERMOSTAT, ZONE TEMPERATURE SENSOR AND DUCT TEMPERATURE SENSOR. MOUNT THERMOSTAT AT 48" A.F.F.. PROVIDE AND PULL CAT5 CABLE FROM ET1 THERMOSTAT TO OPEN PORT ON CUSTOMER NETWORK SWITCH. MOUNT ZONE TEMPERATURE SENSOR AT 60" A.F.F. AND WIRE TO THE S2 & S2 RTN. MOUNT DUCT TEMPERATURE SENSOR IN THE MAIN SUPPLY DUCT WITHIN 6 FEET FROM UNIT AND WIRE TO S2 & S2 RTN. CABLE RUNS AND TERMINATIONS BY MC/GC (CABLE PULL).
4	PROVIDE CONDENSATE PER CODE. EXTEND TO LANDLORD APPROVED RECEPTOR AS REQUIRED. VERIFY POSSIBLE REUSE OF EXISTING CONDENSATE IN FIELD.
5	NEW CEILING EXHAUST FAN/LIGHT COMBO PROVIDED WITH THE LIGHTING PACKAGE. ROUTE EXHAUST DUCT UP THROUGH ROOF. MAINTAIN 10'-0" FROM ANY FRESH AIR INTAKE. PROVIDE GOOSENECK FITTING WITH INSECT SCREEN AT DISCHARGE. PROVIDE INSULATED DUCT CURB AT ROOF PENETRATION. SEE SCHEDULE.
6	UNDERCUT DOOR A MINIMUM OF 1" (MAXIMUM 1-1/4").
7	PROVIDE NEW TRANSFER GRILLE THRU INVENTORY/TELCO ROOM WALL. INSTALL TOP OF GRILLE 6" BELOW FINISHED CEILING. PROVIDE MESH SCREENING OVER OPENING IN WALL. SEE SCHEDULE FOR SIZE.
8	PROVIDE GAS LINES PER CODE. CONNECT TO EXISTING METER & COORDINATE WITH UTILITY. VERIFY POSSIBLE REUSE OF EXISTING GAS LINE.
9	PROVIDE AND INSTALL NEW DUCTLESS SPLIT SYSTEM UNITS PER SCHEDULE. CU LOCATED ON ROOF. G.C. TO COORDINATE WITH LANDLORD AS REQUIRED FOR ALL LANDLORD ROOF WORK RULES AND REGULATIONS.
10	PROVIDE AND INSTALL CONDENSER LINES AND OIL RETURN LOOP.
11	PROVIDE AND INSTALL CONDENSATE LINES PER LOCAL CODE REQUIREMENTS. ROUTE LINE TO TERMINATE AT UTILITY SINK.
12	INSTALL OWNER SUPPLIED ENTOUCH ONE MASTER CONTROLLER THERMOSTAT, AND DUCT TEMPERATURE SENSOR. MOUNT THERMOSTAT AT 48" A.F.F.. PROVIDE AND PULL CAT5 CABLE FROM ET1 THERMOSTAT TO OPEN PORT ON CUSTOMER NETWORK SWITCH. MOUNT ZONE TEMPERATURE SENSOR AT 60" A.F.F. AND WIRE TO THE S2 & S2 RTN. MOUNT DUCT TEMPERATURE SENSOR IN THE MAIN SUPPLY DUCT WITHIN 6 FEET FROM UNIT AND WIRE TO S2 & S2 RTN. CABLE RUNS AND TERMINATIONS BY MC/GC (CABLE PULL). PROVIDE MITSUBISHI PAC-US444CN-1 THERMOSTAT INTERFACE FOR CN105-IT TERMINAL CONNECTION TO ENTOUCH CONTROLS.
13	PROVIDE ERV UNIT FOR COMPLIANCE WITH DOAS SECTION C403.6.
14	OUTSIDE AIR INTAKE DUCT FROM ROOF. PROVIDE GREENHECK GRISI FITTING WITH BIRD SCREEN AT INTAKE. PROVIDE INSULATED CURB AT ROOF PENETRATION. PROVIDE MOTORIZED BACKDRAFT DAMPER AND INTERLOCK DAMPER WITH UNIT TO SHUT DOWN BELOW 38 DEGREES F. PROVIDE 15 FOOT FREEZE PROBE IN OUTSIDE AIR DUCT TO BE CONNECTED TO UNIT CONTROLS. COORDINATE EXACT ROUTING & INTAKE LOCATION WITH LANDLORD PRIOR TO BID. MIN 10'-0" FROM ANY EXHAUST VENT.
15	EXHAUST AIR RELIEF DUCT TO ROOF. PROVIDE GREENHECK GRISI FITTING WITH BIRD SCREEN AT DISCHARGE. PROVIDE INSULATED CURB AT ROOF PENETRATION. PROVIDE MOTORIZED BACKDRAFT DAMPER AND INTERLOCK DAMPER WITH UNIT TO SHUT DOWN BELOW 38 DEGREES F. PROVIDE 15 FOOT FREEZE PROBE IN EXHAUST AIR DUCT TO BE CONNECTED TO UNIT CONTROLS. COORDINATE EXACT ROUTING & DISCHARGE LOCATION WITH LANDLORD PRIOR TO BID. MIN 10'-0" FROM ANY FRESH AIR INTAKE.

GENERAL NOTES

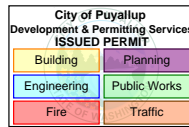
- ALL ROOF WORK IS TO BE DONE BY THE LANDLORD'S ROOFING CONTRACTOR AND AT THE TENANT'S EXPENSE.
- ALL DUCTWORK SHALL BE GALVANIZED SHEETMETAL PER SMACNA STANDARDS. NO DUCTBOARD PERMITTED.
- ALL DUCT WORK SHALL BE INSULATED WITH A MINIMUM R-6 INSULATION FOR INTERIOR DUCTWORK AND A MINIMUM R-8 INSULATION FOR EXTERIOR DUCTWORK PER IECC (IN CALIFORNIA PROVIDE MINIMUM R-8 INTERIOR / EXTERIOR.)
- PROVIDE INSULATED FLEXIBLE DUCT CONNECTIONS TO DIFFUSERS. FLEX DUCT LENGTH NOT TO EXCEED 5 FT.
- VERIFY THE EXACT MOUNTING FRAME REQUIRED FOR EACH DIFFUSER.
- PROVIDE ALL MANUAL BALANCE DAMPERS REQUIRED TO BALANCE THE ENTIRE SYSTEM.
- ALL NEW RESTROOM DOORS SHALL BE UNDERCUT A MINIMUM 1". TENANT GENERAL CONTRACTOR SHALL ENSURE THAT EXISTING DOORS COMPLY.
- PROVIDE AND SIZE CONDENSATE LINES AS REQUIRED. ROUTE TO NEAREST ROOF DRAIN WHERE PERMITTED, ELSE TO THE NEAREST APPROVED RECEPTOR.
- MODIFY THE SPRINKLER SYSTEM (WHERE EXISTING) TO ACCOMMODATE NEW FLOOR PLAN LAYOUT PER NFPA 13. REPLACE SPRINKLER AS REQUIRED. ALL HEADS IN THE SALES AREA ARE TO BE CONCEALED PENDANT TYPE. NON-SALES AREAS ARE TO BE PENDANT TYPE. CONTACT THE LANDLORD FOR ADDITIONAL REQUIREMENTS AND A LIST OF APPROVED FIRE PROTECTION CONTRACTORS.
- REPLACE FILTERS PRIOR TO TURNOVER.
- PROVIDE RFI/RFQ TO P.M. & ARCHITECT FOR ALL DISCREPANCIES PRIOR TO COMMENCING WORK.
- TENANT GENERAL CONTRACTOR SUB TO PROVIDE REDLINES OF ALL DEVIATIONS FROM THE PLANS AND PROVIDE A COMPLETE TEST & BALANCE REPORT AS REQUIRED BY THE CONTRACT.

MECHANICAL LEGEND

MANUAL BALANCING DAMPER TO BE PLACED IN ACCESSIBLE LOCATION

NOTE: SEE SHEET M102 FOR MECHANICAL SCHEDULES AND SHEET M501 FOR MECHANICAL DETAILS

WHEN REQUIRED, IT IS THE OWNER'S RESPONSIBILITY TO CONTRACT WITH A COMMISSIONING AUTHORITY TO COMPLY WITH LOCAL CODES.



12920 SE 38th STREET
BELLEVUE, WA 98006
WWW.T-MOBILE.COM

PRCTI20241902

COPYRIGHT NOTICE:
THESE DRAWINGS AND SPECIFICATIONS ARE COPYRIGHTED AND SUBJECT TO COPYRIGHT PROTECTION AS AN "ARCHITECTURAL WORK" UNDER REG. 102 OF THE COPYRIGHT ACT, 17 U.S.C. 101. ANY REPRODUCTION OR TRANSMISSION OF THESE DRAWINGS OR SPECIFICATIONS WITHOUT THE WRITTEN PERMISSION OF THE ARCHITECT, ENGINEER OR OWNER OF THE DESIGN, UNDER SUCH PROTECTION, UNAUTHORIZED USE OF THESE DRAWINGS AND SPECIFICATIONS MAY RESULT IN CRIMINAL OR CIVIL LIABILITY.

SOUTH MERIDIAN & 43RD

AVE SE

4227 S MERIDIAN SUITE E
PUYALLUP, WA 98373

8022

PROTOTYPE RELEASE: Q3 2024

DCD: XX



DATE:

11.11.2024

FUZION

9090 EAST BAHIA DRIVE
SUITE 103
SCOTTSDALE, AZ 85260
design@fuzionad.com
(480) 463-4764
www.fuzionad.com

GEMINI
ENGINEERING GROUP

101 Nightlinger Lane
Millsap, TX 76066
(817) 901-5191

##	DESCRIPTION	DATE
3	CONSTRUCTION COORDINATION	3/11/2025

DATE:

11.11.2024

DRAWN BY:

HO

MECHANICAL FLOOR
PLAN

M101

C

MECHANICAL SYMBOLS		
NOTE: NOT ALL USED AT THIS LOCATION		
SINGLE LINE	DESCRIPTION	DOUBLE LINE
	90° ELBOW DOWN	
	90° ELBOW UP	
	ROUND RADIUS ELBOW	
	90° STRAIGHT TEE	
	90° CONICAL TEE	
	45° BRANCH	
	45° CONICAL TEE	
	SIZE OR SHAPE TRANSITION	
	ROUND FLEXIBLE DUCT	
	90° ELBOW DOWN	
	90° ELBOW UP	
	RECTANGULAR RADIUS ELBOW	
	RECTANGULAR ELBOW WITH TURNING VANES	
	BRANCH TAKE-OFF WITH 45° TAP	
	LINED DUCTWORK (UNLESS NOTED OTHERWISE)	
	SIDEWALL SUPPLY GRILLE OR REGISTER WITH AIR EXTRACTOR	
	SUPPLY DUCT RISER	
	RETURN, EXHAUST OR OUTSIDE AIR DUCT RISER	
	DOOR GRILLE	
	MANUAL BALANCING DAMPER	
	MOTORIZED DAMPER	
	FIRE DAMPER	
	COMBINATION FIRE AND SMOKE DAMPER WITH SMOKE DETECTOR	
	SMOKE DAMPER (AUTOMATIC) WITH SMOKE DETECTOR	
	DUCT MOUNTED SMOKE DETECTOR	
	RETURN AIR DUCT / CEILING RETURN AIR GRILLE OR REGISTER	
	SUPPLY AIR DUCT / SUPPLY DIFFUSER LINEAR DIFFUSER	
	EXHAUST AIR DUCT / CEILING MOUNTED EXHAUST FAN	
	CANVAS CONNECTOR WITH VIBRATION	
	CONNECT TO EXISTING	
	REMOVE TO THIS POINT	
	FLEXIBLE CONNECTION	
	THERMOSTAT	
	SENSOR	
	UNIT HEATER	
	EXHAUST FAN	
	CONDENSING UNIT	
	FAN COIL UNIT / AIR HANDLER UNIT	
	ROOFTOP AIR CONDITIONING UNIT	
	O.A.	O.A.
	TRANSFER GRILLE	
	DUCT SLEEVE	

B

A

MECHANICAL ABBREVIATIONS	
NOTE: NOT ALL USED AT THIS LOCATION	
A.C.U. OR A.C.	AIR CONDITIONING UNIT (SPLIT-DX OR WATER COOLED)
A.F.F.	ABOVE FINISHED FLOOR
A.H.U.	AIR HANDLING UNIT
B.O.H.	BACK OF HOUSE
B.T.U.H.	BRITISH THERMAL UNIT / HOUR
C.H.	CABINET HEATER
C.U.	CONDENSING UNIT (SPLIT-DX SYSTEMS)
C.F.M.	CUBIC FEET PER MINUTE
E.A.T.	ENTERING AIR TEMPERATURE
E.B.H.	ELECTRIC BASEBOARD HEATER
E.D.H.	ELECTRIC DUCT HEATER
E.E.R.	ENERGY EFFICIENCY RATIO
E.F.	EXHAUST FAN
E.S.P.	EXTERNAL STATIC PRESSURE
F.C.U.	FAN COIL UNIT
F.F.C.H.	FORCED FLOW CABINET HEATER
F.L.A.	FULL LOAD AMPS
G.F.I.	GROUND FAULT INTERRUPTER
I.O.M.	INSTALLATION AND OPERATION MANUAL
K.W.	KILOWATT
L.A.T.	LEAVING AIR TEMPERATURE
M.C.A.	MINIMUM CIRCUIT AMPACITY
N.C.	NOISE CRITERIA
O.A.	OUTSIDE AIR
P.S.I.	POUNDS PER SQUARE INCH
R.L.A.	RUNNING LOAD AMPS
R.T.U.	ROOF TOP UNIT
S.E.E.R.	SEASONAL ENERGY EFFICIENCY RATIO
T.G.C.	TENANT GENERAL CONTRACTOR
U.H.	UNIT HEATER
U.N.O.	UNTIL NOTED OTHERWISE
V.F.	VENTILATION FAN
W.C.	WATER COLUMN
W.G.	WATER GAUGE

HVAC LOAD CALCULATIONS			
T-Mobile 8022 4227 S Merian Suite E Puyallup, WA 98373 3263 Square Feet			
ASHRAE DESIGN CONDITIONS			
COOLING OA DB	89	COOLING OA WB	67
COOLING IA DB	70	COOLING IA WB	63
HEATING OA	19	HEATING IA	72
ROOF U-FACTOR	0.050	LIGHTING WATTS	2400
LIGHT DIVERS.	1.1	MISC. WATTS	10005
VENT CFM - MIN OA	740	SQ FT/PERSON	75
VENT CFM/PERSON	15.0	NO OF PEOPLE	44
WALL AREA	3024	WALL U-FACTOR	0.07
PEOPLE SENS HEAT	250	PEOPLE LATENT	200
COOLING LOAD SUMMARY			
SENSIBLE HEAT GAIN		LATENT HEAT GAIN	
PEOPLE	10877	PEOPLE	8701
VENTILATION	15255	VENTILATION	6789
ROOF LOAD	15010		
LIGHT LOAD	9010		
MISC LOAD	34147		
WALL LOAD	18084		
TOTAL SENSIBLE	102382	TOTAL LATENT	15491
TOTAL COOLING LOAD		117873 BTUH	
SENS/TOTAL RATIO		87 %	
NOMINAL CFM		4696 CFM	
HEATING LOAD SUMMARY			
SENSIBLE HEAT GAIN		LATENT HEAT GAIN	
VENTILATION	42554	VENTILATION	0
ROOF LOAD	8647		
WALL LOAD	10418		
TOTAL SENSIBLE	61618	TOTAL LATENT	0

NEW PACKAGED GAS HEAT ROOFTOP UNIT SCHEDULE																			
SYMBOL	BASIS FOR DESIGN	AIR FLOW (CFM)	O.A. FLOW (CFM)	EXT. S.P. (IN W.C.)	DX COOLING COIL			GAS HEAT			ELECTRICAL				APPROX. WEIGHT (LBS.)	NOTES			
					TONS	TOTAL LOAD (MBH)	SENSIBLE LOAD (MBH)	INPUT (MBH)	OUTPUT (MBH/HR)	STAGES	VOLTS/Ø/HZ.	MCA	MOCP	EER2			SEER2		
RTU-1	TRANE YSK060	2,000	440	.70	5	61.4	47.8	100	70	2	208/3/60	29	45	11.0	13.4	1,100	1		
RTU-2	TRANE YSK060	2,000	290	.70	5	61.4	47.8	100	70	2	208/3/60	29	45	11.0	13.4	1,100	1		
NOTES					VENTILATION REQUIREMENT CALCULATION													PER IMC TABLE 403.3	
1. SEE EXISTING SYSTEM NOTES THIS SHEET					ROOM NAME	UNIT SERVICING	PEOPLE	CFM/PERSON	CFM/SF	AREA (SF)	PEOPLE X CFM/PERSON	SF X CFM/SF	TOTAL O.A. CFM	ZONE AIR DIST EFF TABLE 403.2.1.2	REQUIRED O.A. CFM	PROVIDED O.A. CFM			
					SALES	ERV-1	32	7.5	0.12	2104	240	252.48	492.48	0.8	615.6	620			
					CORRIDOR	ERV-1	-	-	0.06	264	-	15.84	15.84	0.8	19.8	20			
					BOH-1	ERV-1	2	5	0.06	252	10	15	25	0.8	31.4	35			
					BOH-2	ERV-1	2	5	0.06	311	10	19	29	0.8	35.825	40			
					OFFICE	ERV-1	1	5	0.06	86	5	5	10	0.8	12.7	15			
					RESTROOMS		-	-	-	120	-	-	-	0.8	-	-			
					MINIMUM FRESH AIR CFM REQUIRED PER CODE												730		
					TOTAL O.A. PROVIDED												730		
					RESTROOMS	70 CFM / FIXTURE				# FIXTURES=		2	150	CFM EXHAUST REQ'D	150	CFM EXHAUST PROVIDED	150	CFM EXHAUST PROVIDED	
NOTES: REPRESENTS CONDITIONS DURING NORMAL OPERATIONS AND NOT CONSIDERING ECONOMIZER OPERATION.																			

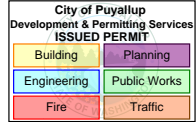
DUCTLESS DX SPLIT SYSTEM SCHEDULE																				
SYMBOL	MITSUBISHI MODEL	AIR HANDLER						AIR COOLED CONDENSING UNIT							COOLING PERFORMANCE DATA					
		MOUNTING	CFM	OA	FLA	POWER CONN.		WEIGHT (LBS.)	COMPRESSORS		REF. TYPE	POWER CONNECTION				WEIGHT (LBS.)	CAPACITY (MBH)		SEER2	EER2
						V.	Ph.		NO.	RLA		V.	Ph.	MCA	MOCP		TOTAL	SENS.		
AH-1	PLA-A24EA8	CEILING	710	--	0.28	POWERED BY OUTDOOR UNIT		57									24.0	20.6	24.7	14.3
CU-1	PUY-A24NH47								1	7	R410A	208	1	19	26	151				
NOTES: 1. PROVIDE 3RD PARTY THERMOSTAT INTERFACE MODEL #PAC-US445CN-1 FOR CN105-IT TERMINAL CONNECTION TO ENTOUCH CONTROLS. 2. INSTALL INTERFACE CARD AT EACH UNIT AND RUN THERMOSTAT WIRES DOWN TO EACH LOCATION. 3. EACH UNIT WILL NEED A STEP-DOWN TRANSFORMER TO CONVERT 120VAC TO 24VAC TO POWER THE T-STAT INTERFACE AND SUPPLY POWER TO THE ENTOUCH T-STAT. 4. SIZE, ROUTE, INSULATE AND PROVIDE APPURTENANCES FOR DX PIPING SYSTEMS, PER MANUFACTURER RECOMMENDATIONS. 5. COORDINATE OUTDOOR UNIT MOUNTING REQUIREMENTS AND ROOF PENETRATIONS WITH ROOFING CONTRACTOR. 6. PROVIDE WITH CONDENSATE PUMP EQUAL TO LITTLE GIANT VCC-20. REFER TO DRAWINGS FOR CONDENSATE ROUTING REQUIREMENTS. 7. MITSUBISHI IS THE BASIS OF DESIGN. ALTERNATES TO BE APPROVED BY OWNER AND ENGINEER PRIOR TO ORDERING. CONTRACTOR IS RESPONSIBLE FOR VARIATIONS IN FIT AND ELECTRICAL SERVICE. 8. FOR REFRIGERANT LINESETS LONGER THAN 70'-0", FOLLOW MANUFACTURER'S LONG LINESET GUIDELINES.																				

ENERGY RECOVERY VENTILATOR											
SYMBOL	MANUFACTURER	MODEL	DRIVE TYPE	PERFORMANCE		ELECTRICAL				APPROX. WEIGHT (LBS.)	NOTES
				AIR FLOW (CFM)	EXT. STATIC (IN W.C.)	VOLTS/Ø/HZ.	FAN MOTOR HP	MCA	MOCP		
ERV-1	GREENHECK	MINIVENT-750-VG	DIRECT	730	0.25	208/1/60	3/4	12.5	15	240	

DIFFUSER SCHEDULE									
MARK	MANUF.	MODEL	SERVICE	MODULE SIZE (L" x W")	FRAME TYPE	FINISH	MOUNTING	N.C.	NOTES
A	TITUS	TMSA	SUPPLY DIFFUSER	24" x 24"	SEE PLANS	#26 WHITE	CEILING GRID	<25	1,2,3,4
B	TITUS	TMSA	SUPPLY DIFFUSER	12" x 12"	SEE PLANS	#26 WHITE	CEILING GRID	<25	1,2,3,4
C	TITUS	350R	RETURN GRILLE	12" x 10"	SEE PLANS	#26 WHITE	WALL	<25	1,5
D	TITUS	50F	RETURN GRILLE	24" x 24"	SEE PLANS	SALES - BLACK IRON BOH - #26 WHITE	CEILING GRID	<25	1,2,3
F	NOT USED								
NOTES: 1. OR APPROVED EQUAL. 2. COORDINATE EXACT FRAME MOUNTING TYPE WITH ARCHITECTURAL CEILING PLAN. 3. BRANCH DUCT SIZE SHALL BE SAME AS NECK SIZE UNLESS OTHERWISE NOTED. 4. SELECT TMSA DIFFUSER PER NECK SIZE. SEE PLANS. 5. MOUNT TOP OF GRILLE 6" BELOW FINISHED CEILING.						SALES FLOOR SUPPLY DIFFUSERS AND RETURN GRILLES TO BE PAINTED BENJAMIN MOORE "BLACK IRON" MATTED IN THE FIELD.			

NOT USED														
----------	--	--	--	--	--	--	--	--	--	--	--	--	--	--

EXHAUST FAN SCHEDULE													
MARK	MANUF.	MODEL	DRIVE TYPE	PERFORMANCE				ELECTRICAL			MOUNTING	APPROX. WEIGHT (LBS)	NOTES
				AIR FLOW (CFM)	EXT STATIC (W.C.)	FAN SPEED (RPM)	SONES	V	P	MOTOR HP			
L233	BROAN	QTXE110150DCL	DIRECT	110	0.1	--	0.8	208	3	--	CEILING	14	1,2,3
NOTES: 1. OR APPROVED EQUAL. 2. PROVIDE INSULATED ROOF CURB FOR MOUNTING. 3. PROVIDE WITH BACKDRAFT DAMPER. 4. PROVIDE GOOSENECK FITTING/INSECT SCREEN AT DISCHARGE ON ROOF.													



12920 SE 38th STREET
BELLEVUE, WA 98006
WWW.T-MOBILE.COM

PRCTI20241902

COPYRIGHT NOTICE:
THESE DRAWINGS AND SPECIFICATIONS ARE COPYRIGHTED AND SUBJECT TO COPYRIGHT PROTECTION AS AN "ARCHITECTURAL WORK" UNDER REG. 102 OF THE COPYRIGHT ACT, 17 U.S.C. 101, 102, 103, 104, 105, 106, 107, 108, 109, 110, 111, 112, 113, 114, 115, 116, 117, 118, 119, 120, 121, 122, 123, 124, 125, 126, 127, 128, 129, 130, 131, 132, 133, 134, 135, 136, 137, 138, 139, 140, 141, 142, 143, 144, 145, 146, 147, 148, 149, 150, 151, 152, 153, 154, 155, 156, 157, 158, 159, 160, 161, 162, 163, 164, 165, 166, 167, 168, 169, 170, 171, 172, 173, 174, 175, 176, 177, 178, 179, 180, 181, 182, 183, 184, 185, 186, 187, 188, 189, 190, 191, 192, 193, 194, 195, 196, 197, 198, 199, 200, 201, 202, 203, 204, 205, 206, 207, 208, 209, 210, 211, 212, 213, 214, 215, 216, 217, 218, 219, 220, 221, 222, 223, 224, 225, 226, 227, 228, 229, 230, 231, 232, 233, 234, 235, 236, 237, 238, 239, 240, 241, 242, 243, 244, 245, 246, 247, 248, 249, 250, 251, 252, 253, 254, 255, 256, 257, 258, 259, 260, 261, 262, 263, 264, 265, 266, 267, 268, 269, 270, 271, 272, 273, 274, 275, 276, 277, 278, 279, 280, 281, 282, 283, 284, 285, 286, 287, 288, 289, 290, 291, 292, 293, 294, 295, 296, 297, 298, 299, 300, 301, 302, 303, 304, 305, 306, 307, 308, 309, 310, 311, 312, 313, 314, 315, 316, 317, 318, 319, 320, 321, 322, 323, 324, 325, 326, 327, 328, 329, 330, 331, 332, 333, 334, 335, 336, 337, 338, 339, 340, 341, 342, 343, 344, 345, 346, 347, 348, 349, 350, 351, 352, 353, 354, 355, 356, 357, 358, 359, 360, 361, 362, 363, 364, 365,



DATE: 11.11.2024

FUZION

9090 EAST BAHIA DRIVE
SUITE 103
SCOTTSDALE, AZ 85260
design@fuzionad.com
(480) 463-4764
www.fuzionad.com

GEMINI
ENGINEERING GROUP

101 Nightlinger Lane
Millsap, TX 76066
(817) 901-5191

#	DESCRIPTION	DATE
3	CONSTRUCTION COORDINATION	3/11/2025

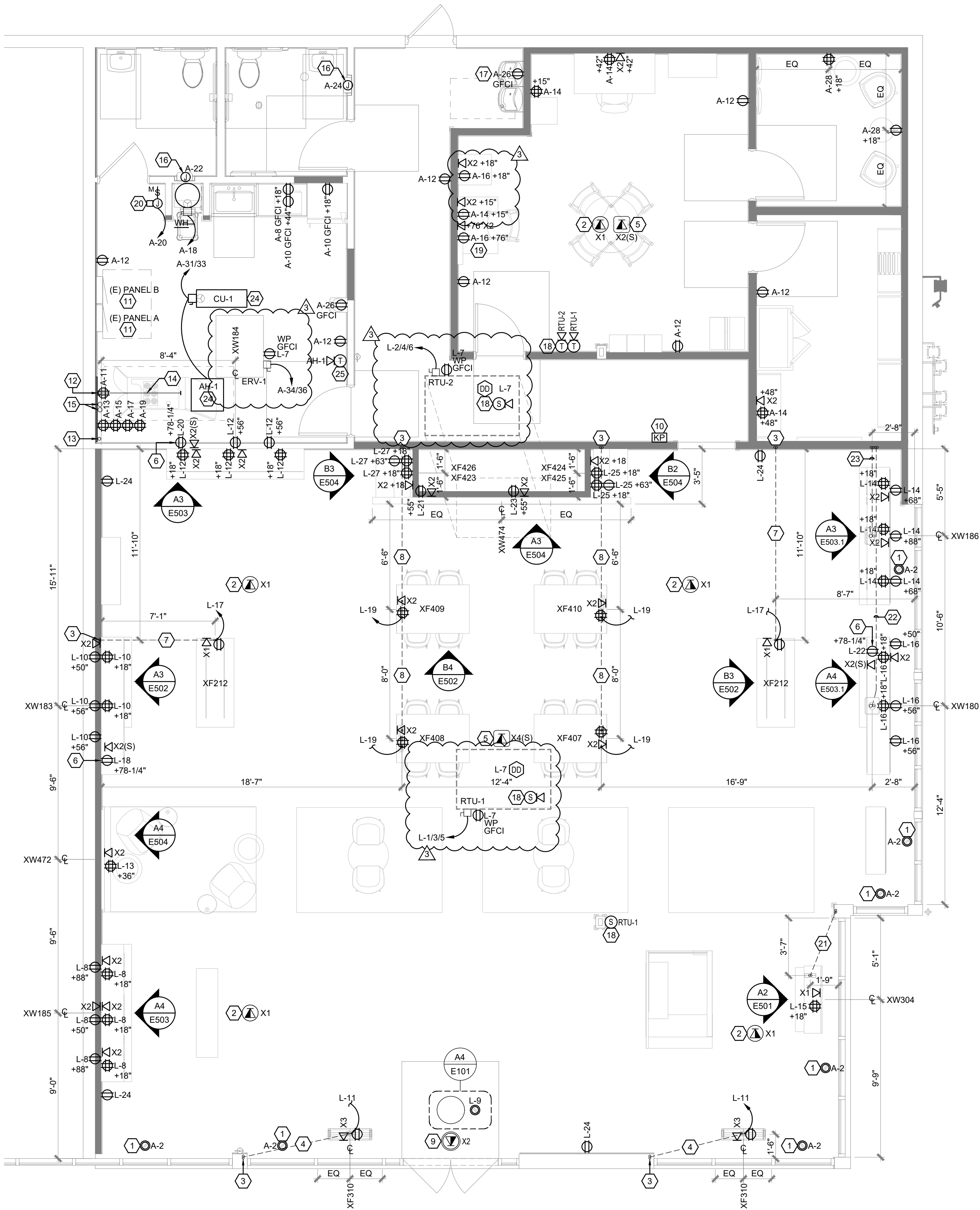
DATE: 11.11.2024
DRAWN BY: HO

POWER FLOOR PLAN

E101

#	NOTES
1	SHOW WINDOW RECEPTACLE(S). LOCATE MAXIMUM 18" FROM TOP OF WINDOW (NEC 210.62).
2	PROVIDE OVERHEAD AP CABLING ABOVE CEILING W/ 3'-0" MIN. SERVICE LOOP. COORDINATE W/ AP VENDOR FOR EXACT LOCATIONS.
3	PROVIDE POWER CIRCUIT AND LOW VOLTAGE WIRING TO J-BOXES ABOVE CEILING FOR CONDUIT TRENCH TO FLOOR FIXTURES.
4	SAW CUT (TRENCH) TO XF310 FIXTURE. SEE WIRING DETAILS ON SHEET E501 FOR ADDITIONAL INFORMATION AND RESPONSIBILITIES. • CONDUIT SCHEDULE: (1) 1" GENERAL POWER, (1) 1" DATA
5	PROVIDE OVERHEAD AP CAT6A SHIELDED CABLING ABOVE CEILING FOR RAN. PROVIDE 20'-0" SERVICE LOOP COILED ABOVE CEILING. COORDINATE W/ AP VENDOR FOR EXACT LOCATIONS.
6	PROVIDE DEDICATED CIRCUIT FOR DIGITAL DISPLAY EQUIPMENT. SEE DETAILS ON SHEETS E502 AND E503.
7	SAW CUT (TRENCH) TO XF212 OEM TABLE. SEE WIRING DETAILS ON SHEET E502 FOR ADDITIONAL INFORMATION AND RESPONSIBILITIES. • CONDUIT SCHEDULE: (1) 3/4" GENERAL POWER & (1) 3/4" DATA
8	SAW CUT (TRENCH) TO WORKSHOP TABLE. SEE WIRING DETAILS ON SHEET E502 FOR ADDITIONAL INFORMATION AND RESPONSIBILITIES. • CONDUIT SCHEDULE: (1) 1" GENERAL POWER & (1) 1" DATA TO EACH TABLE
9	PROVIDE DATA BOX ABOVE CEILING FOR SHOPPER TRACKER. OWNER'S VENDOR WILL EXTEND CABLING BACK TO TELEPHONE BACK BOARD.
10	ROUGH IN FOR JCI KEYPAD. MOUNT AT 48" A.F.F.. COORDINATE EXACT LOCATION WITH SECURITY COMPANY.
11	ELECTRICAL EQUIPMENT. SEE ONE LINE DIAGRAM ON SHEET E301. T.G.C. TO PROVIDE ALL NEC CLEARANCES.
12	PROVIDE TELEPHONE BACKBOARD. SEE ELEVATION ON SHEET E302 FOR DETAILS.
13	PROVIDE 2" CONDUIT AND PULL CORD FROM LANDLORD TELEPHONE BACKBOARD TO THE TENANT TELEPHONE BACKBOARD.
14	PROVIDE (1) 3" CONDUIT FOR JCI CABLES.
15	PROVIDE (2) 4" CONDUIT FOR CAT6 RT CABLES.
16	PROVIDE CONNECTION TO AUTOMATIC HAND DRYER AT 34" A.F.F. (HAND DRYER FURNISHED BY OWNER THROUGH LIGHTING VENDOR). SEE ARCHITECTURAL DETAILS FOR LOCATION.
17	MOUNT GFI RECEPTACLE PER MANUFACTURES TEMPLATE.
18	INSTALL OWNER SUPPLIED ENTOUCH ONE MASTER CONTROLLER THERMOSTAT. ZONE TEMPERATURE SENSOR AND DUCT TEMPERATURE SENSOR. MOUNT THERMOSTAT AT 48" A.F.F.. PROVIDE AND PULL CAT5 CABLE FROM ETI THERMOSTAT TO OPEN PORT ON CUSTOMER NETWORK SWITCH. MOUNT ZONE TEMPERATURE SENSOR AT 60" A.F.F. AND WIRE TO THE S2 & S2 RTN. MOUNT DUCT TEMPERATURE SENSOR IN THE MAIN SUPPLY DUCT WITHIN 6 FEET FROM UNIT AND WIRE TO S2 & S2 RTN. CABLE RUNS AND TERMINATIONS BY MC/GC (CABLE PULL).
19	REFER TO MONITOR MOUNTING DETAILS ON ARCHITECTURAL DRAWINGS.
20	PROVIDE MOTOR RATED SWITCH FOR RECIRCULATION PUMP DISCONNECT. CONNECT TO CIRCUIT INDICATED USING 2#12, #12G, IN 3/4" CONDUIT AND PROVIDE FINAL CONNECTIONS AFTER PLUMBER INSTALLATION.
21	SAW CUT (TRENCH) TO FREESTANDING XW302 GRAB & GO. SEE DETAILS ON SHEET E501 FOR ADDITIONAL INFORMATION AND RESPONSIBILITIES. • CONDUIT SCHEDULE: (1) 1" DEDICATED POWER, (1) 1" GENERAL POWER & (1) 1" DATA
22	SAW CUT (TRENCH) TO FREESTANDING XW180 T-MOBILE BENTO. SEE WIRING DETAILS ON SHEET E503.1 FOR ADDITIONAL INFORMATION AND RESPONSIBILITIES. • CONDUIT SCHEDULE: (1) 1-1/4" DEDICATED POWER & (1) 2" DATA
23	SAW CUT (TRENCH) TO FREESTANDING XW188 T-MOBILE BENTO. SEE WIRING DETAILS ON SHEET E503.1 FOR ADDITIONAL INFORMATION AND RESPONSIBILITIES. • CONDUIT SCHEDULE: (1) 1-1/4" DEDICATED POWER & (1) 2" DATA

WIRING SYMBOLS			
	DUPLEX RJ45 JACK W/ 1 CAT6 WIRE	X1	OVERHEAD AP CABLING
	DUPLEX RJ45 JACK W/ 2 CAT6A SHIELDED WIRES	X1	OVERHEAD SHOPPER TRACKER CABLING
	DUPLEX RJ45 JACK W/ 2 CAT6 SHIELDED WIRES	X2(S)	OVERHEAD RAN W/ 2 CAT6A SHIELDED WIRES
	QUADPLEX RJ45 JACK W/ 3 CAT6 WIRES	X4(S)	OVERHEAD RAN W/ 4 CAT6A SHIELDED WIRES
	QUADPLEX RJ45 JACK W/ 4 CAT6 WIRES		
NOTES: A. PROVIDE CAT6A SHIELDED DATA CABLING FOR ALL NANOLUMEN LED DIGITAL DISPLAYS AND RAN EQUIPMENT. B. UPSIZE CONDUIT FOR CAT6A SHIELDED CABLE AS REQUIRED. C. RIGID CONDUIT ONLY FOR DATA CABLING. NO FLEXIBLE CONDUIT ALLOWED.			



A3 POWER FLOOR PLAN
1/4" = 1'-0"

- LOCATE InVue 52 cm EXCLUSION ZONE MANAGER 36" FROM ENTRY DOOR(S)
- PROVIDE CEILING MOUNTED DUPLEX RECEPTACLE NEXT TO InVue 52 cm EXCLUSION ZONE MANAGER

A4 EXCLUSION ZONE MANAGER CLG DTL
1/4" = 1'-0"

GENERAL NOTES

- SLAB PENETRATIONS SHALL BE MADE WITH PROPER LOCATION AND X-RAY IDENTIFICATION OF EXISTING REBAR AND/OR POST TENSION CABLES AND CONFIRMATION OF UNDER-SLAB CONDITIONS/SPACES BELOW. ESCALATE ANY CONFLICTS WITH STUB-IN LOCATIONS TO THE CPM.
- ELECTRICAL CONTRACTOR TO LABEL ALL RECEPTACLES AND PROVIDE A TYPE-WRITTEN PANEL SCHEDULE INSIDE THE ELECTRICAL PANEL.
- ALL WORK SHALL COMPLY WITH THE CURRENTLY ADOPTED CODES, ORDINANCES, AND AMENDMENTS.
- ALL EQUIPMENT SHALL BE LISTED BY A RECOGNIZED TESTING LAB (i.e. U.L., ETC.)
- PROVIDE PLENUM RATED WIRING WHERE REQUIRED TO COMPLY WITH NEC.
- PROPERLY GROUND RECEPTACLES, BOXES AND COVER PLATES INSTALLED IN FIXTURES PER NEC 250 AND 406.
- NO BX, AC OR ROMEX TYPE WIRING ALLOWED IN WALLS.
- ALL LOW VOLTAGE WIRING TO BE IN CONDUIT UNLESS OTHERWISE APPROVED BY AUTHORITY HAVING JURISDICTION.

C

B

A

PANEL A (EXISTING)																				
Service: 120/208 Volts				3			Phase			4			Wire		Cabinets:		Surface		Mounted	
Mains: 225 Amp				MLO									Total Watts:		27,045		NEMA		1	
REM	CKT	DESCRIPTION		WATTS	WIRE	BKR	A	B	C	BKR	WIRE	DESCRIPTION		WATTS	CKT	REM				
L2	1	LTG-SALES GENERAL		708	12	1/20	X			1/20	12	SHOW WINDOW REC		1200	2					
L3	3	LTG-SALES GENERAL/EM		524	12			X		1/20	12	DIGITAL CLOUD REC		334	4					
L4	5	LTG-SALES DISPLAY		600	12	1/20			X	1/20	12	PORTAL CEILING REC		900	6					
	7	LTG-BOH		447	12	1/20	X			1/20	12	MICROWAVE REC		1200	8					
	9	LCB		180	12	1/20		X		1/20	12	REFRIG/COUNTER REC		680	10					
	11	TELE BOARD REC		360	12	1/20			X	1/20	12	BOH GENERAL REC		1080	12					
	13	TELE BOARD REC		360	12	1/20	X			1/20	12	MNGR/SAFE/TCRT/RC		1260	14					
	15	TELE BOARD REC		360	12	1/20		X		1/20	12	DASH BD / PRINTER REC		540	16					
	17	TELE BOARD REC		360	12	1/20			X	1/20	12	WATER HEATER		1650	18					
	19	TELE BOARD REC		360	12	1/20	X			1/20	12	RECIRCULATION PUMP		200	20					
	21	SPARE				1/20		X		1/20	12	HAND DRYER		1650	22	LO				
	23	SPARE				1/20			X	1/20	12	HAND DRYER		1650	24	LO				
	25	SPARE				1/20	X			1/20	12	EWC REC		370	26					
	27	SPARE				1/20		X		1/20	12	PRVACY POD REC		540	28					
	29	SPARE				1/20			X	1/20	12	SPARE			30					
HR	31	AH-1/CU-1		1976			X			1/20	12	SPARE			32					
	33	SPARE		1976	10	2/25		X		2/15	12	ERV-1		1500	34	HR				
	35	SPARE				1/20			X					1500	36					
	37	SPARE				1/20	X							60	38					
L5	39	SIGN		1200	12	1/20			X	3/20	12	TVSS		60	40					
L5	41	SIGN		1200	12	1/20			X					60	42					
REMARKS													TOTAL LOAD PHASE 'A'		8141					
(L#) LIGHTING CONTACTOR													TOTAL LOAD PHASE 'B'		9544					
(L.O) LOCK-OFF DEVICE													TOTAL LOAD PHASE 'C'		9360					
(HR) HACR RATED CB													TOTAL LOAD ALL PHASES		27045 WATTS					
															75.13 AMPS					
ALL BREAKERS TO BE 20A BOLT-ON UNLESS NOTED OTHERWISE																				

PANEL A - ELECTRICAL LOAD SUMMARY				
120/208 3PH - 4W				
LOAD DESCRIPTION	CONNECTED LOAD (WATTS)	DEMAND FACTOR	DEMAND LOAD (WATTS)	DEMAND LOAD (AMPS)
LIGHTING	2279	1.25	2849	
RECEPTACLES	10284	NOTE #1	10142	
WATER HEATERS	1650	1.25	2063	
SIGNAGE	2400	1.25	3000	
MISC.	3480	1.00	3480	
HVAC	6952	NOTE #2	8690	
TOTAL	27045		30223	84
NOTES: 1. 100% OF FIRST 10,000 WATTS , PLUS 50% OF REMAINING LOAD. 2. 100% OF A/C LOAD, PLUS 25% OF HIGHEST LOAD.				

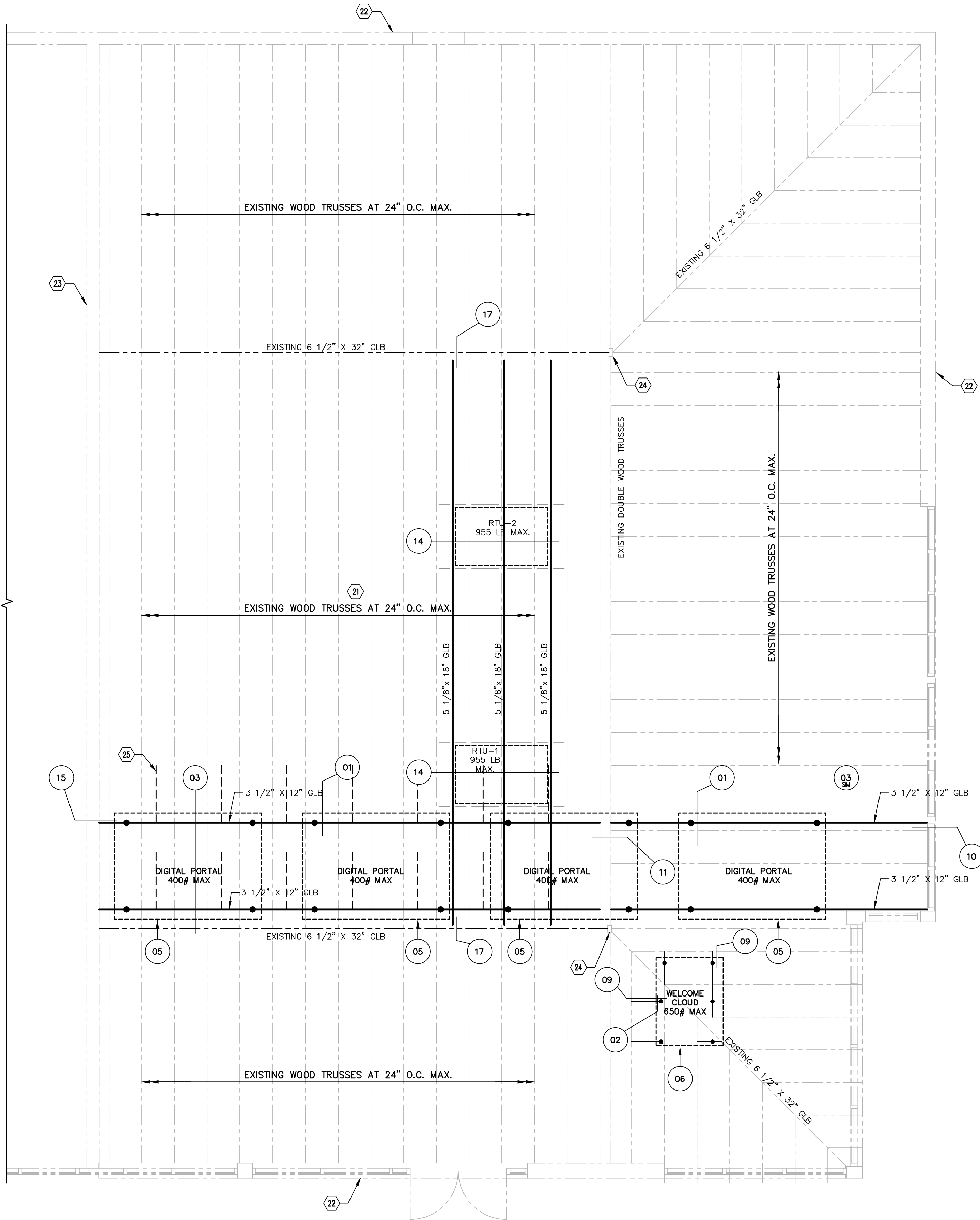
PANEL L (EXISTING)																					
Service: 120/208 Volts				3 Phase			4			Wire		Cabinets:		Surface		Mounted					
Mains: 225 Amp				MLO								Total Watts: 38,536				NEMA 1					
REM	CKT	DESCRIPTION		WATTS	WIRE	BKR	A	B	C	BKR	WIRE	DESCRIPTION		WATTS	CKT	REM					
HR	1			3480			X							3480	2						
	3	RTU-1		3480	6	3/4S		X			3/4S	6	RTU-2		3480	4	HR				
	5			3480					X					3480	6						
	7	DUCT DET/RTU GFI REC		760	12	1/20	X				1/20	12	WALL REC PLAN WEST		1620	8					
	9	SECURITY REC		180	12	1/20		X			1/20	12	WALL REC PLAN WEST		1260	10					
	11	XF-310 REC		360	12	1/20			X		1/20	12	WALL REC PLAN NORTH		1620	12					
	13	PORTAL WALL REC		360	12	1/20	X				1/20	12	WALL REC PLAN WEST		1620	14					
	15	GRAB N GO REC		360	12	1/20		X			1/20	12	WALL REC PLAN WEST		1260	16					
	17	OEM TABLE REC		360	12	1/20			X		1/20	12	TV MONITOR REC		360	18					
	19	WORKSHOP TABLE REC		1440	12	1/20	X				1/20	12	TV MONITOR REC		360	20					
	21	DIGITAL DISP BACK WALL		1338	12	1/20		X			1/20	12	TV MONITOR REC		360	22					
	23	DIGITAL DISP BACK WALL		1338	12	1/20			X		1/20	12	GENERAL REC		720	24					
	25	DEMO DEPOT REC		900	12	1/20	X				1/20	12	SPARE			26					
	27	OPS DEPOT REC		900	12	1/20		X			1/20	12	SPARE			28					
	29	SPARE				1/20			X		1/20	12	SPARE			30					
	31	SPARE				1/20	X				1/20	12	SPARE			32					
	33	SPARE				1/20		X			1/20	12	SPARE			34					
	35	SPARE				1/20			X		1/20	12	SPARE			36					
	37			60			X				1/20	12	SPARE			38					
	39	TVSS		60	12	3/20		X			1/20	12	SPARE			40					
	41			60					X		1/20	12	SPARE			42					
REMARKS														TOTAL LOAD PHASE 'A'		14080					
(L#) LIGHTING CONTACTOR														TOTAL LOAD PHASE 'B'		12678					
(L.O) LOCK-OFF DEVICE														TOTAL LOAD PHASE 'C'		11778					
(HR) HACR RATED CB														TOTAL LOAD ALL PHASES		38536 WATTS					
																107.04 AMPS					
ALL BREAKERS TO BE 20A BOLT-ON UNLESS NOTED OTHERWISE																					

PANEL L - ELECTRICAL LOAD SUMMARY				
120/208 3PH - 4W				
LOAD DESCRIPTION	CONNECTED LOAD (WATTS)	DEMAND FACTOR	DEMAND LOAD (WATTS)	DEMAND LOAD (AMPS)
LIGHTING	0	1.25	0	
RECEPTACLES	17476	NOTE #1	13738	
WATER HEATERS	0	1.25	0	
SIGNAGE	0	1.25	0	
MISC.	180	1.00	180	
HVAC	20880	NOTE #2	26100	</

C

B

A



PARTIAL ROOF FRAMING PLAN

SCALE: 1/4" = 1'-0"

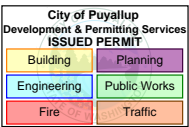
ROOF FRAMING NOTES – TYP U.N.O.:

1. VERIFY ALL DIMENSIONS AND ELEVATIONS WITH THE ARCHITECTURAL DRAWINGS AND FIELD CONDITIONS. BUILDING DIMENSIONS AND ELEVATIONS, WHERE SHOWN, WERE PROVIDED BY THE ARCHITECT AND IT IS THE CONTRACTOR'S RESPONSIBILITY TO VERIFY AND COORDINATE ALL DIMENSIONS PRIOR TO PROCEEDING WITH THE WORK. ANY DISCREPANCIES SHALL BE RESOLVED THROUGH THE ARCHITECT.
2. FOR CLARITY, DETAILS MAY SHOW ONLY ONE SIDE OF FRAMING CONDITIONS. ALL OPENINGS MAY NOT BE SHOWN ON THIS PLAN. FOR EXACT SIZE, NUMBER AND LOCATION OF OPENINGS, SEE ARCHITECTURAL, MECHANICAL, PLUMBING, ELECTRICAL, SPRINKLER AND THEIR RELATED DRAWINGS. FOR FRAMING AT OPENINGS, SEE TYPICAL DETAILS.
3. VERIFY EXACT SIZE, WEIGHT AND LOCATION OF EQUIPMENT AND SUPPORTS INDICATED ON PLAN WITH ARCHITECTURAL, MECHANICAL, PLUMBING, ELECTRICAL, SPRINKLER AND THEIR RELATED DRAWINGS. EQUIPMENT INDICATED ARE ONLY THOSE THAT EXCEED LOADS SPECIFIED IN THE G.S.N. FOR SUPPORT OF EQUIPMENT, SEE TYPICAL DETAILS AND OTHER TRADES.
4. THE EXISTING CONDITIONS DEPICTED ON THESE DRAWINGS ARE BASED ON APEX TECH SOLUTIONS SURVEY DATA DATED 10/15/2024 AND SHALL BE VERIFIED BY THE CONTRACTOR PRIOR TO CONSTRUCTION. ANY DISCREPANCIES SHALL BE BROUGHT TO THE ATTENTION OF THE STRUCTURAL ENGINEER IMMEDIATELY.

FRAMING KEYNOTES

940-11

- 21 CONTRACTOR TO VERIFY TRUSSES ARE 19'-2" LONG (MAX). NOTIFY ENGINEER IF OTHERWISE.
- 22 EXISTING EXTERIOR WALL.
- 23 EXISTING INTERIOR DEMISING WALL.
- 24 EXISTING STEEL COLUMN.
- 25 BRACE WOOD BEAM PER DETAIL 12.



T Mobile

12920 SE 38th STREET
BELLEVUE, WA 98006
WWW.T-MOBILE.COM

PRCTI20241902

COPYRIGHT NOTICE:
THESE DRAWINGS AND SPECIFICATIONS ARE COPYRIGHTED AND SUBJECT TO COPYRIGHT PROTECTION AS AN "ARCHITECTURAL WORK" UNDER REG. 102 OF THE COPYRIGHT ACT, 17 U.S.C. 101, AND JANUARY 2002. THE PROTECTION INCLUDES, WITHOUT LIMITATION, THE GENERAL FORM, ARRANGEMENT AND COMPOSITION OF SPACES AND ELEMENTS OF THE DESIGN. UNDER NO PROTECTION IS AUTHORIZED USE OF THESE DRAWINGS AND SPECIFICATIONS MAY RESULT IN CESSION OF CONSTRUCTION, BUILDING DESIGN, AND/OR MONETARY LIABILITY.

SOUTH MERIDIAN & 43RD

AVE SE

4227 S MERIDIAN SUITE E
PUYALLUP, WA 98373

DESIGN TYPE:

E1Y

PROJECT TYPE:

CORP NEW

8022

PROTOTYPE RELEASE: Q3 2024



FUZION

20551 N. PIMA ROAD
SUITE 200
SCOTTSDALE, AZ 85255

Design@FuzionAD.com
www.FuzionAD.com

##	DESCRIPTION	DATE

DATE: 11.18.2024
DRAWN BY: PET

PARTIAL ROOF FRAMING PLAN

FOR ADDITIONAL INFORMATION SHOWN BUT NOT NOTED, SEE GENERAL STRUCTURAL NOTES ON SHEET S101 AND TYPICAL DETAIL SHEETS.

THESE DRAWINGS/CALCULATIONS ARE CONSIDERED PRELIMINARY – NOT FOR CONSTRUCTION OR RECORDING UNLESS THE STRUCTURAL ENGINEER OF RECORD'S SEAL IS AFFIXED WITH WRITTEN SIGNATURE.

PROJECT NUMBER	24-1374	PROJECT MANAGER	TRM
PROJECT ENGINEER	JKC	PROJECT DRAFTER	PET

CARUSO
TURLEY
SCOTT
structural
engineers

1215 West Rio Salado Parkway
Suite 200
Tempe, Arizona 85281
(480) 774-1700
www.ctsaz.com

S201