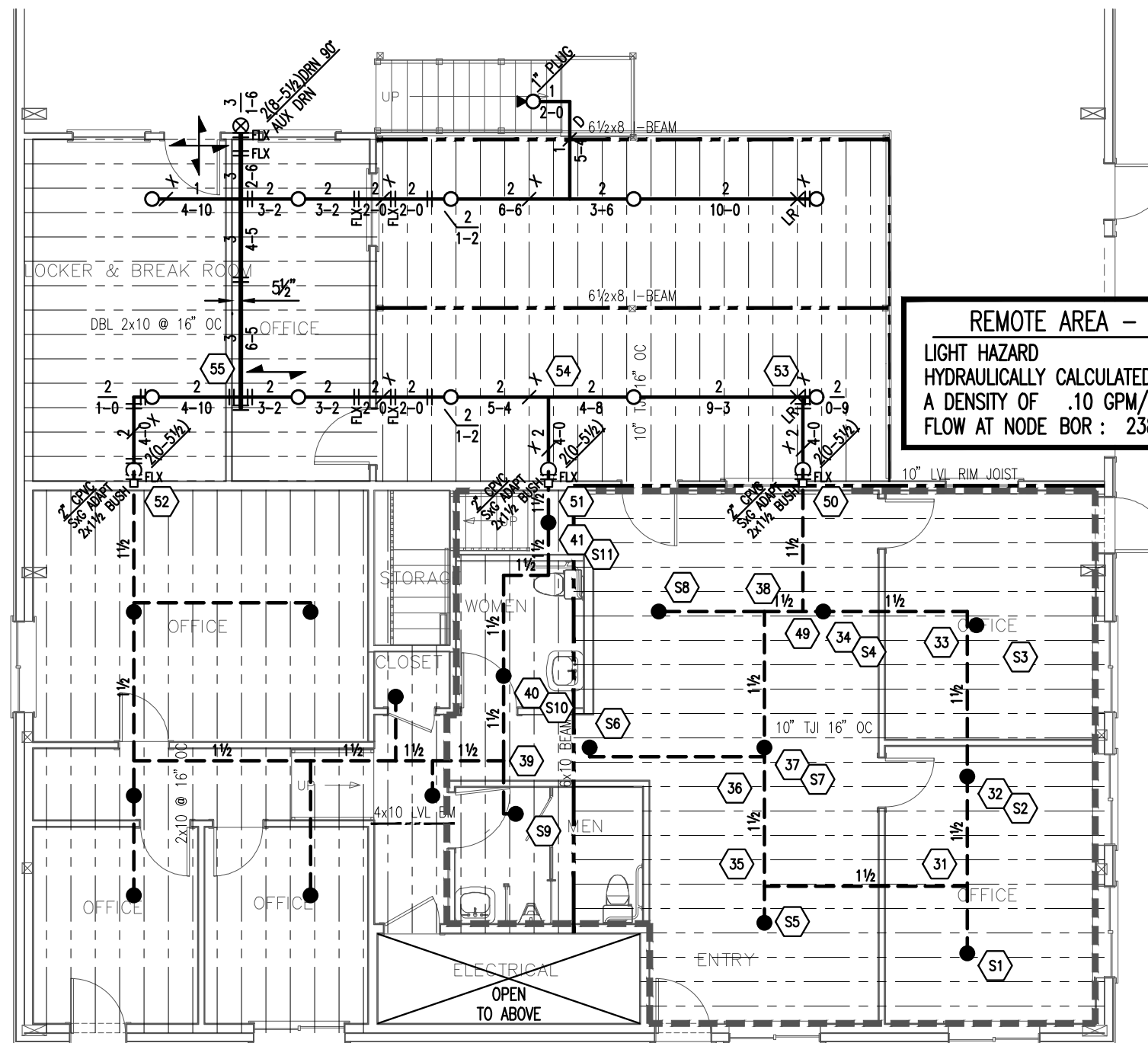


OVERHEAD FIRE SPRINKLER PLAN

SCALE: 1/8"=1'-0"



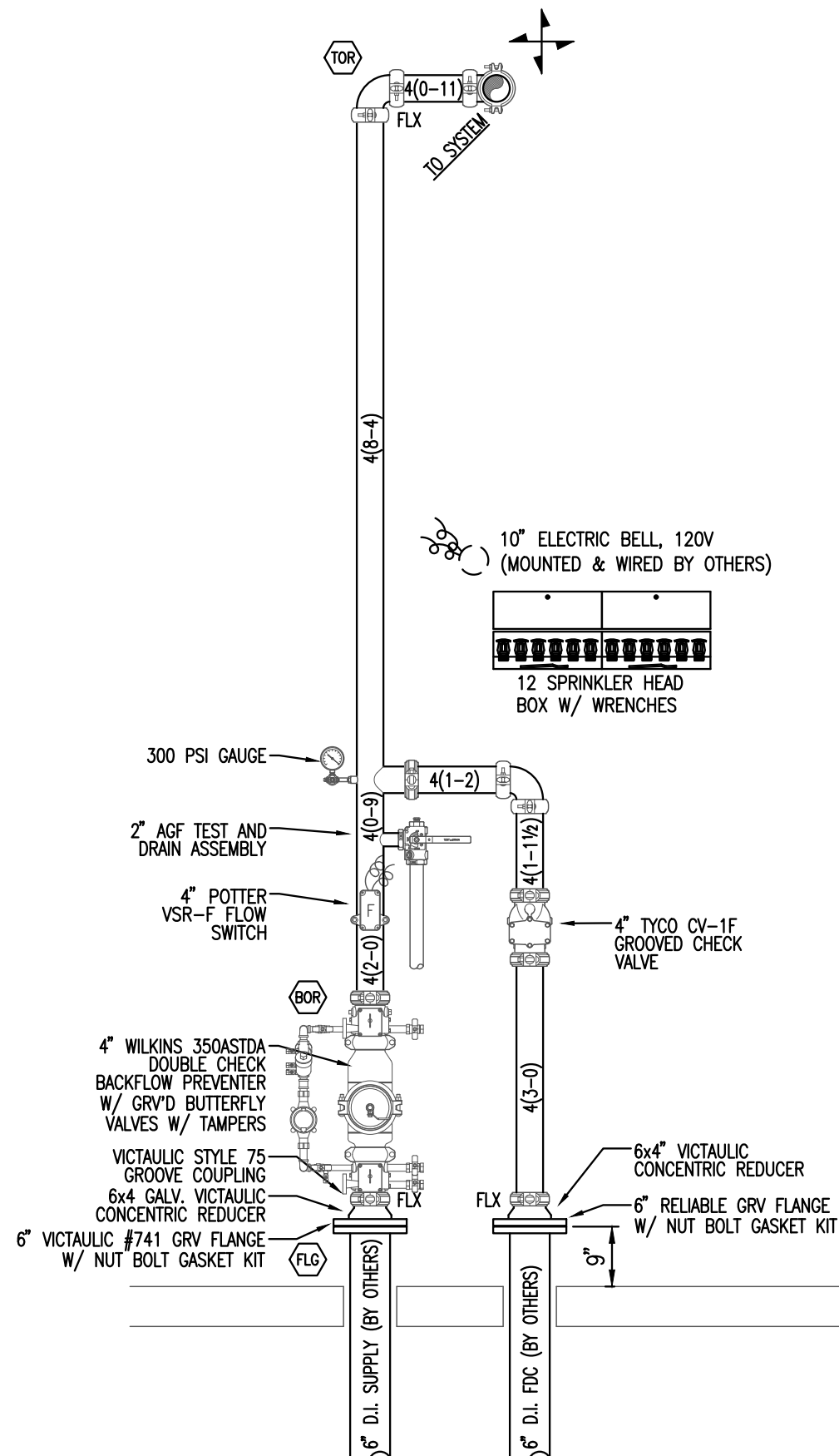
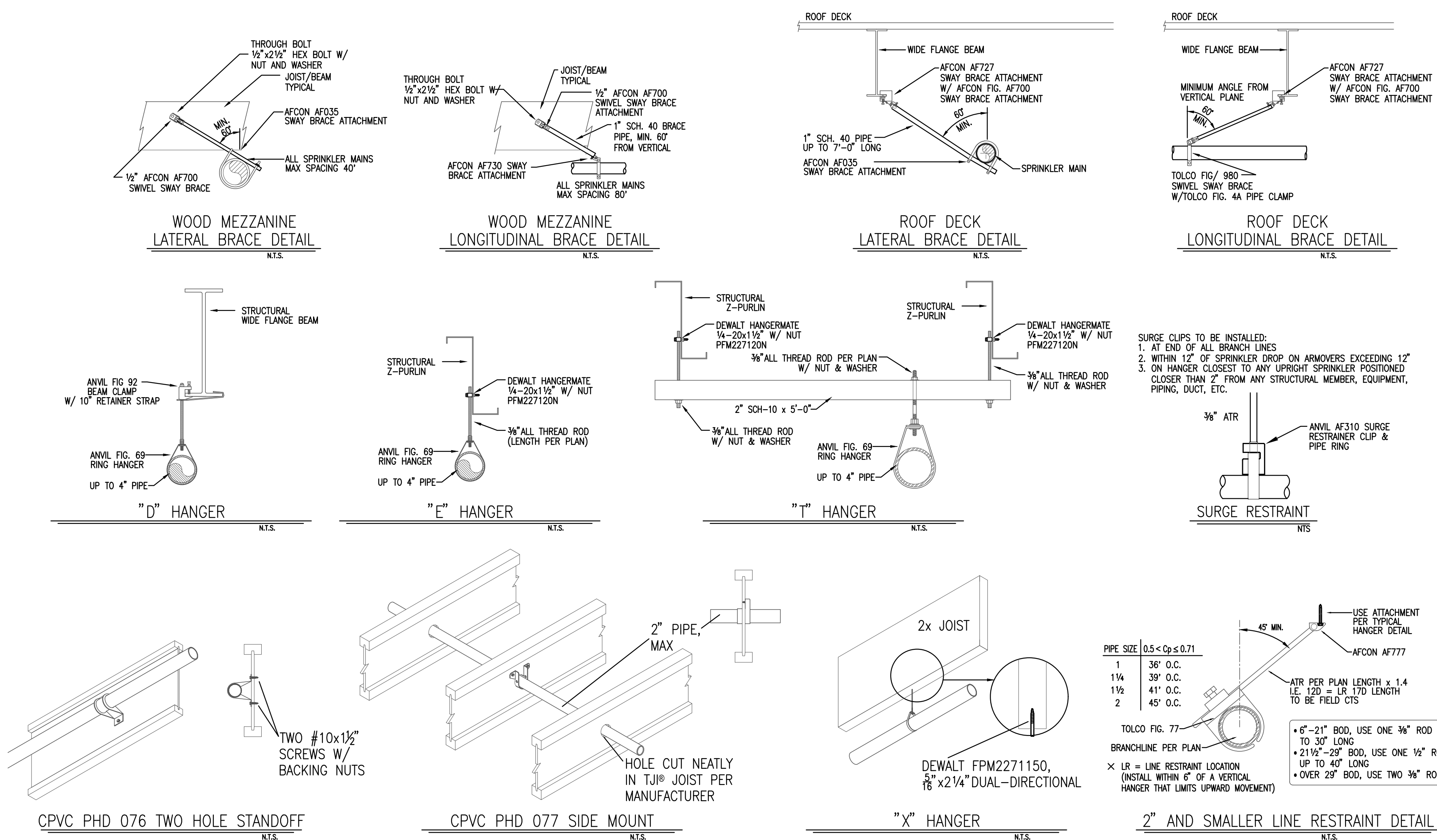
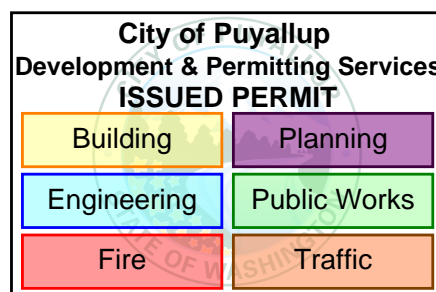
BELOW MEZ FIRE SPRINKLER PLAN

SCALE: 1/8"=1'-0"



CPVC PIPE NOTES:

1. ALL CPVC PIPE TO BE INSTALLED PER ITS LISTING.
2. ALL CPVC PIPE TO BE 1" UNLESS NOTED OTHERWISE.
3. HANGER SUPPORTS TO BE WITHIN 9" OF A SPRINKLER DROP.
4. MAXIMUM HANGER SPACING:
1" PIPE: 6'
1 1/2" PIPE: 7'
5. ALL AREAS OF SPRINKLER PIPING TO BE AT LEAST 40°.



RISER DETAIL

SCALE: 1/2"=1'-0"

HANGER LEGEND

- A "U" HOOK
- B COACH SCREW ROD
- D BM. CLAMP W/ "STRAP"
- E EYELET
- F FLUSH SHELL
- G CEILING FLANGE
- H SIDE BEAM BRACKET
- K SHORT CLIP
- M ALL THREAD ROD
- N TOGGLE NUT
- P POWDER DRIVEN STUD
- R EXPANSION BOLT
- S PIPE SPIKE
- T
- U
- V
- W
- X
- Y
- Z

SPRINKLER LEGEND

SPRINKLER ORIFICE SIZES AND TYPE	UPRIGHT	PENDENT	TEMP. RATING
1/2" SPRAY	1/2"	1/2"	165°
3/4" SPRAY	3/4"	3/4"	212°
1" SIDEWALL	1"	1"	286°
1 1/2" DRY TYPE	1 1/2"	1 1/2"	350°
2" DRY TYPE	2"	2"	500°

APPROVAL REQUIRED

CITY OF PUYALLUP

STATE CERTIFICATION

CERTIFICATE OF COMPETENCY

Fire Protection Systems

Chris Edward Carr
8765-1206-C Level 3
PATRIOTFIRE, Inc.

03/04/2025

Signature

TEMP. RATING	SPRINKLER ORIFICE SIZES AND TYPE	UPRIGHT	PENDENT	TEMP. RATING
165°	1/2" SPRAY	1/2"	1/2"	165°
212°	3/4" SPRAY	3/4"	3/4"	212°
286°	1" SIDEWALL	1"	1"	286°
350°	1 1/2" DRY TYPE	1 1/2"	1 1/2"	350°
500°	2" DRY TYPE	2"	2"	500°

SPRINKLER HEAD LEGEND	SYMBOL	TEMP.	QTY.
RELIABLE F11880 R64322 OR UPRIGHT	W2 3/4"	8.0K BRONZE	155' 73
RELIABLE Q5-56 R64115 OR CONC. PENDENT	W3 1/2"	5.6K BRONZE	165' 38
RELIABLE F11856 R64125 OR UPRIGHT	W2 1/2"	5.6K BRONZE	N/A 11
RELIABLE F30556 R5734 OR DRY HSW	F3R 1"	5.6K CHROME	155' 2

QUALITY CONTROL BY	DATE
APPROVED FOR FABRICATION BY	DATE

GENERAL NOTES

1. ALL MATERIAL AND EQUIPMENT TO BE NEW AND UL LISTED OR FM APPROVED.
2. PIPE DIMENSIONS ARE CENTER TO CENTER EXCEPT RISERS & DIMENSIONS SHOWN THROU (X-X) WHICH ARE END TO END.
3. EARTHQUAKE BRACING SHALL BE PROVIDED IN ACCORDANCE WITH NFPA PAMPHLET NO. 13, 2019 EDITION.
4. PIPE HANGERS AND METHOD OF HANGING TO BE IN ACCORDANCE WITH NFPA PAMPHLET NO. 13, 2019 EDITION.
5. PIPING SHALL BE IN ACCORDANCE WITH NFPA PAMPHLET NO. 13, 2019 EDITION.
6. JOINTS OF PIPE AND FITTINGS, THREADED & WELDED, SHALL BE IN ACCORDANCE WITH NFPA PAMPHLET NO. 13, 2019 EDITION.
7. OWNER TO PROVIDE ADEQUATE HEAT IN AREAS PROTECTED BY A WET PIPE SPRINKLER SYSTEM TO PREVENT WATER IN PIPES FROM FREEZING.
8. ALL WIRING OF ELECTRICAL DEVICES (IF REQUIRED) TO BE PROVIDED BY OTHERS.
9. PAINTING OF PIPE & EQUIPMENT (IF REQUIRED) TO BE PROVIDED BY OTHERS.
10. FURNISHING OF PIPE & EQUIPMENT (IF REQUIRED) TO BE PROVIDED BY OTHERS.

DESIGN CRITERIA

1. DESIGN PER NFPA 13, 2019 EDITION.
2. WAREHOUSE AREA DESIGNED .20 GPM/1500 SQ. FT. MISCELLANEOUS STORAGE UP TO 12'-0".

PIPE NOTES

1. ALL UNDERGROUND PIPING TO BE DUCTILE IRON (BY OTHERS).
2. ALL DASHED PIPING INDICATES CPVC, 1" U.N.O.
3. ALL THREADED PIPE TO BE BLK SCH-40.
4. ALL GROOVED PIPING TO BE BLK SCH-10.

REVISIONS

NO.	DATE	BY	DESCRIPTION

CONTRACT WITH:

BPLC PROPERTIES, LLC
2412 INTER AVE
PUYALLUP, WA 98372-3425

PROJECT NAME:

BPLC NORTH YARD
RETROFIT
2511 INTER AVE
PUYALLUP, WA 98372

PATRIOT FIRE PROTECTION, INC.

2707 70TH AVENUE EAST
TACOMA, WA 98424

DESIGNER: CLINT CARR
DATE: 3-4-2025
JOB NO.: 17-2495

SHEET: 2 OF 2

TEL: (253) 926-2290
FAX: (253) 922-6150

WWW.PATRIOTFIRE.COM
clint@patriotfire.com

FP-2