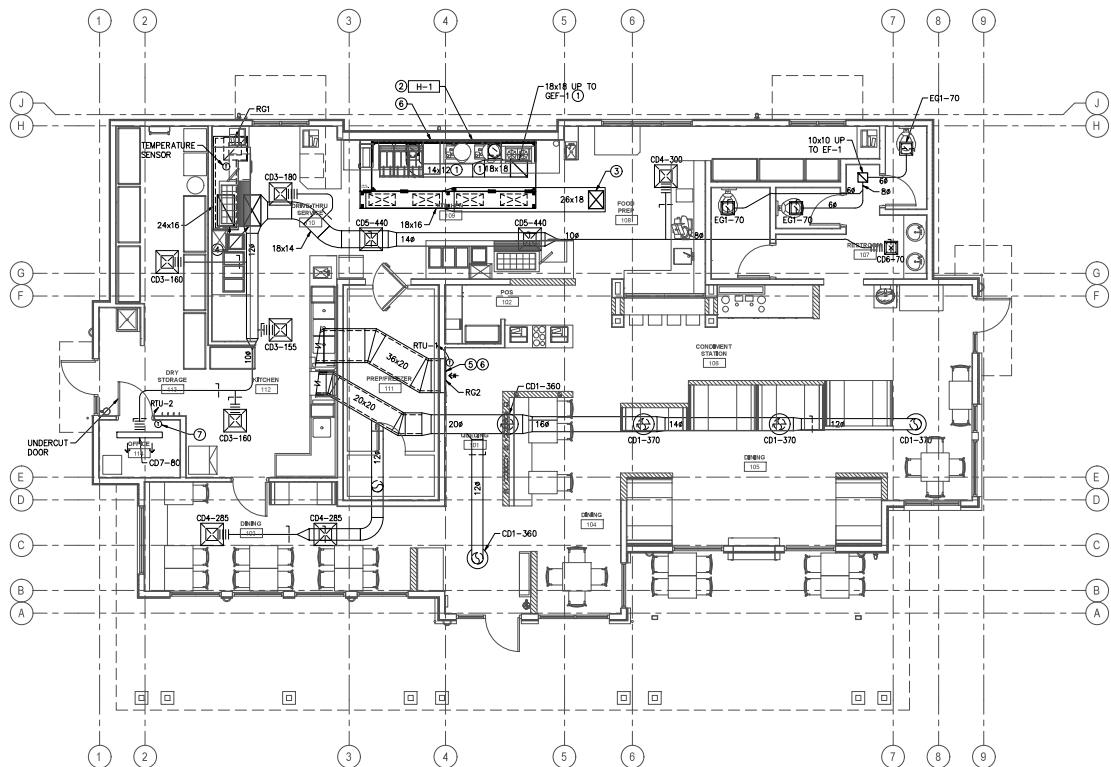


PLAN NOTES:

1. ALL DUCTWORK SHALL BE GALVANIZED SHEET METAL UNLESS OTHERWISE NOTED AND INSTALLED IN ACCORDANCE WITH SMACNA REQUIREMENTS. REFER TO DUCT HANGER DETAILS ON SHEETS M-6 AND M-7. EXCEPT GREASE EXHAUST DUCTWORK, ALL DUCTWORK SHALL BE LOW PRESSURE CONSTRUCTION.
2. EXPOSED DUCTWORK SHALL BE SPIRAL WOUND CONSTRUCTION UNLESS OTHERWISE NOTED. EXPOSED DUCTWORK SHALL HAVE FINISH SUITABLE FOR PAINTING IF PAINTED DUCTS ARE REQUIRED BY ARCHITECT.
3. FLEXIBLE CONNECTORS: PROVIDE UL LISTED 181 FLEXIBLE CONNECTORS PER INTERNATIONAL MECHANICAL CODE SECTION 603.2.1.
4. TYPE I GREASE EXHAUST DUCTWORK SHALL BE PROVIDED IN ACCORDANCE WITH SECTION 506 OF THE INTERNATIONAL MECHANICAL CODE. GREASE EXHAUST DUCTWORK SHALL BE MINIMUM 16 GAGE GALVANIZED STEEL.
5. WHERE VOLUME DAMPERS ARE CONCEALED WITHIN A HARD LID CEILING, PROVIDE CONCEALED YOUNG REGULATOR SERIES 301 OR EQUAL.

KEY NOTES:

1. WRAP ALL GREASE EXHAUST DUCTWORK WITH 3M FIRE BARRIER DUCT WRAP 615+, 2 LAYERS, 1.5-IN THICK, 2-HR FIRE RATING PER ASTM E 2336 AND NFPA-96.
2. PROVIDE FULL SIZE SUPPLY AIR PLENUM DUCT AND EXHAUST DUCT CONNECTIONS PER THE HOOD SCHEDULE. PROVIDE 3-INCH INSULATED BACKING WITH HOOD.
3. FULL SIZE SUPPLY AIR CONNECTION UP TO MUA ON ROOF. LINE DUCTWORK WITH 2-INCH THICK INTERNAL ACoustical Ductliner.
4. FULL SIZE SUPPLY AND RETURN CONNECTIONS UP TO ROOFTOP UNIT.
5. FULL SIZE SUPPLY AND RETURN CONNECTIONS UP TO ROOFTOP UNIT, RTU-1. TRANSITION AS REQUIRED TO AVOID STRUCTURE.
6. LOCATE CO2 SENSOR WITHIN RETURN AIR DUCT IN AN ACCESSIBLE LOCATION.
7. LOCATE THERMOSTAT FOR RTU-2 IN OFFICE. WITH TEMPERATURE SENSOR LOCATED IN RETURN AIR DUCTWORK.



HVAC FLOOR PLAN
1/8" = 1'-0"

