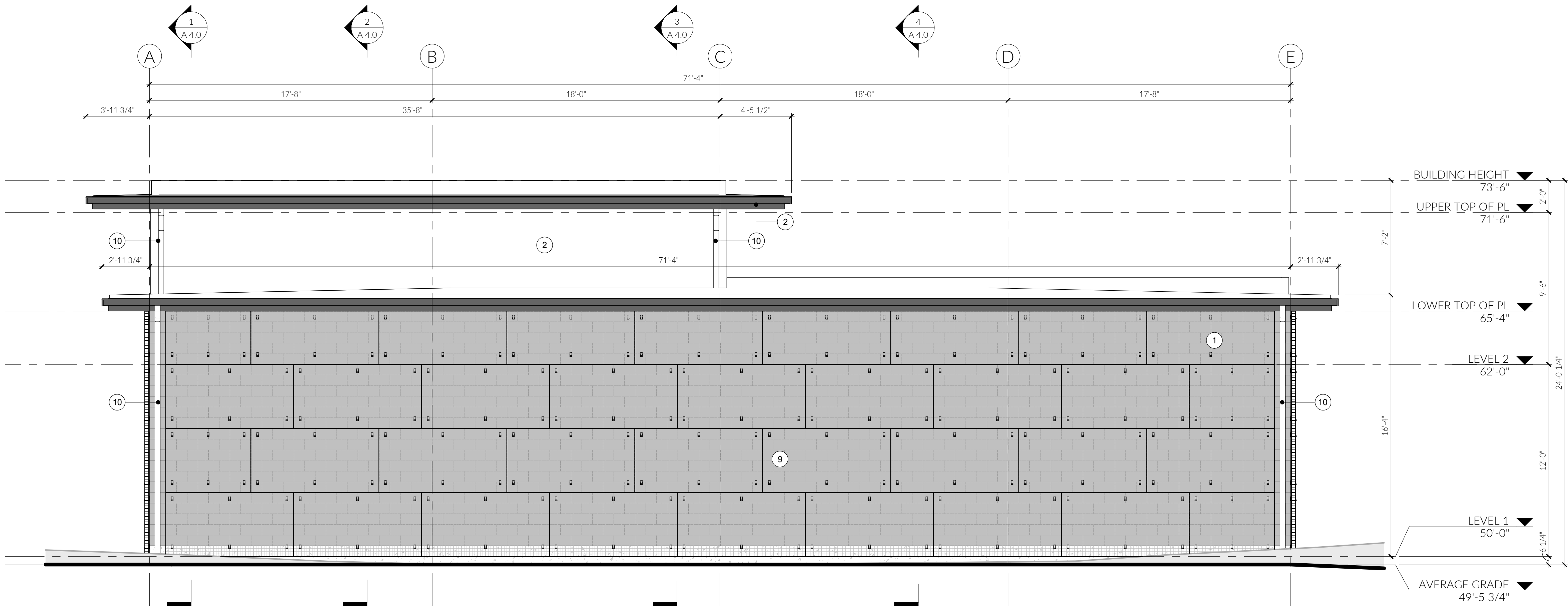


1 NORTH
1/4" = 1'-0"



2 SOUTH
1/4" = 1'-0"

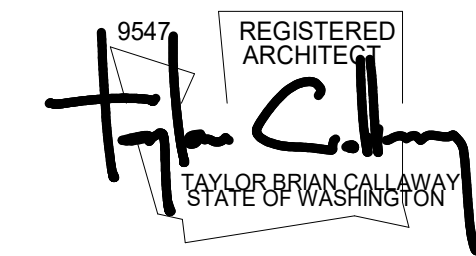
GENERAL NOTES

1. ALL DIMENSIONS TO FACE OF FINISH U.O.N.
2. FINISHED GRADE SHALL BE GRADED SO AS TO PROVIDE A 1/2" PER FOOT SLOPE AWAY FROM ALL EXTERIOR WALLS FOR A MINIMUM OF 10' AROUND THE ENTIRE PERIMETER OF THE BUILDING.
3. EXTERIOR LIGHTING SHALL BE SHIELDED AND DIRECTED AWAY FROM ADJACENT PROPERTIES.
4. INTERIOR LIGHTING IN PARKING GARAGES SHALL BE SHIELDED TO MINIMIZE NIGHTTIME GLARE ON ADJACENT PROPERTIES.
5. *SG* MARK INDICATES SAFETY GLASS GLAZING

MATERIAL LEGEND

- 1 SPLIT FACE CEMENT BLOCK, COLOR MEDIUM GRAY
- 2 HARDIE PANEL, METAL TRIM & FLASHING, COLOR MATTE BLACK
- 3 STEEL AWNING, PAINTED: COLOR MATTE BLACK
- 4 WALL SCONCE, MATTE BLACK
- 5 CONCRETE PLANTER, COLOR MEDIUM GRAY
- 6 BIKE RACK TBD, 4 BIKE PARKING SPOTS MINIMUM
- 7 GARAGE DOOR, CLEAR GLASS WITH FRAME COLOR MATTE BLACK
- 8 ENTRY DOORS, CLEAR GLASS WITH FRAME COLOR MATTE BLACK
- 9 WIRE MESH PLANT TRELLIS
- 10 GUTTER AND DOWNSPOUTS, COLOR MATTE BLACK
- 11 WINDOWS CLEAR GLASS WITH FRAME COLOR MATTE BLACK

E-mail correspondence between project planner and application in 2024 allowed for removal of some previously approved glass. As stated in the correspondence, please include calculation that shows that 60% of the surface area of the wall between two and eight feet above the exterior grade are consisting of windows and/or transparent doorways is still being met on the building elevation plan set. [elevations, A3.0]



5TH ST SE CUP
111 5TH ST SE
PUYALLUP, WA 98372

MUNICIPAL APPROVAL STAMPS

2203
PERMIT SUBMITTAL | 01.24.2025

REVISIONS		
NO.	DESCRIPTION	DATE

DRAWN BY: MD

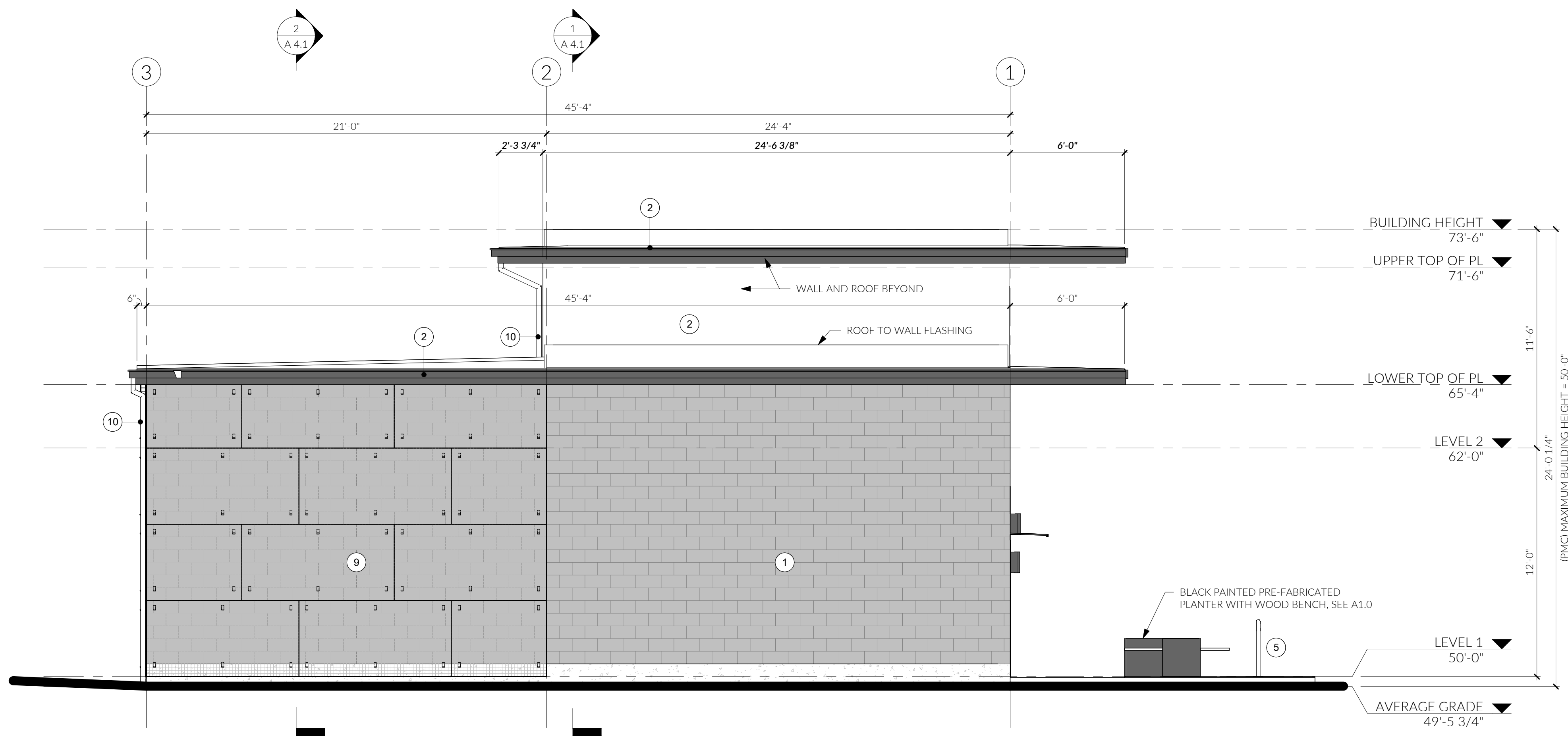
ELEVATIONS

A 3.0

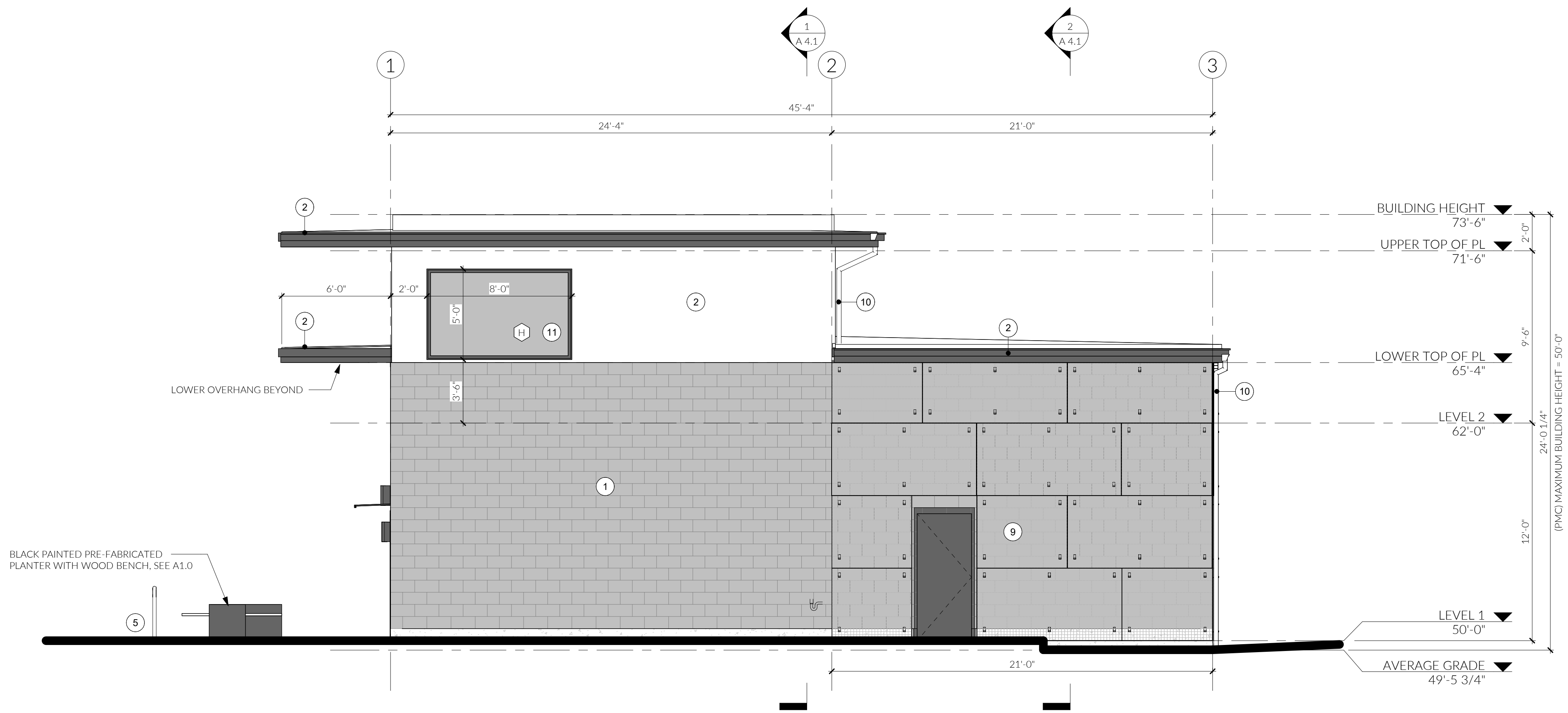
PRCNC20250116

FIRST LAMP ARCHITECTS BUILDERS

206.414.9884
4915 RAINIER AVE S, STE 202
SEATTLE, WA 98118
INFO@FIRSTLAMP.NET



① EAST
1/4" = 1'-0"



③ WEST
1/4" = 1'-0"

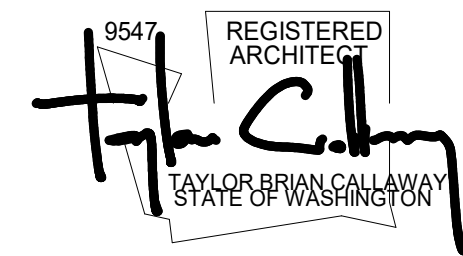
GENERAL NOTES

1. ALL DIMENSIONS TO FACE OF FINISH U.N.O.
2. FINISHED GRADE SHALL BE GRADED SO AS TO PROVIDE A 1/2" PER FOOT SLOPE AWAY FROM ALL EXTERIOR WALLS FOR A MINIMUM OF 10' AROUND THE ENTIRE PERIMETER OF THE BUILDING.
3. EXTERIOR LIGHTING SHALL BE SHIELED AND DIRECTED AWAY FROM ADJACENT PROPERTIES.
4. INTERIOR LIGHTING IN PARKING GARAGES SHALL BE SHIELED TO MINIMIZE NIGHTTIME GLARE ON ADJACENT PROPERTIES.

MATERIAL LEGEND

- ① SPLIT FACE CEMENT BLOCK, COLOR MEDIUM GRAY
- ② PANEL, METAL TRIM & FLASHING, COLOR MATTE BLACK
- ③ STEEL AWNING, PAINTED: COLOR MATTE BLACK
- ④ WALL SCONCE, MATTE BLACK
- ⑤ CONCRETE PLANTER, COLOR MEDIUM GRAY
- ⑥ BIKE RACK TBD, 4 BIKE PARKING SPOTS MINIMUM
- ⑦ GARAGE DOOR, CLEAR GLASS WITH FRAME COLOR MATTE BLACK
- ⑧ ENTRY DOORS, CLEAR GLASS WITH FRAME COLOR MATTE BLACK
- ⑨ WIRE MESH PLANT TRELLIS
- ⑩ GUTTER AND DOWNSPOUTS, COLOR MATTE BLACK
- ⑪ WINDOWS CLEAR GLASS WITH FRAME COLOR MATTE BLACK

206.414.9884
4915 RAINIER AVE S, STE 202
SEATTLE, WA 98118
INFO@FIRSTLAMP.NET



5TH ST SE CUP
111 5TH ST SE
PUYALLUP, WA 98372

MUNICIPAL APPROVAL STAMPS

2203
PERMIT SUBMITTAL | 01.24.2025

REVISIONS		
NO.	DESCRIPTION	DATE

DRAWN BY: MD

ELEVATIONS

A 3.1

FIRST LAMP ARCHITECTS BUILDERS