

FLOW TEST INFORMATION	
STATIC	40 PSI
RESIDUAL	25 PSI
FLOWING	1560 GPM
LOCATION	AT SITE
BY WHO CITY OF PUYALLUP WATER DIVISION	

City of Puyallup
Development & Permitting Services
ISSUED PERMIT

Building

Planning

Engineering

Public Works

Fire

Traffic

City of Puyallup
Fire
REVIEWED
FOR
COMPLIANCE

DDrake
04/04/2025
9:10:31 AM

THE APPROVED CONSTRUCTION PLANS AND ALL ENGINEERING MUST BE POSTED ON THE JOB AT ALL INSPECTIONS IN A VISIBLE AND READILY ACCESSIBLE LOCATION.

Approval of submitted plans is not an approval of omissions or oversight by this office or noncompliance with any applicable regulations of local government. The contractor is responsible for making sure that the building complies with all applicable building codes and regulations of the local government.

SPRINKLER HEAD SCHEDULE				
SYMBOL	COUNT	THREAD	K-FACTOR	DESCRIPTION
⊙	266	1/2"	4.9	HEAD1= VIKING VK468 WHITE RESIDENTIAL RECESSED PENDENT 175°F.
◀	72	1"	5.6	SIDE1= VIKING VK178 QR CHROME DRY HORIZONTAL SIDEWALL 200°F.
338 = TOTAL NUMBER OF HEADS BUILDING D				

EAST TOWN CROSSING BUILDING D
2902 E PIONEER
PUYALLUP, WA 98372

PROJECT ADDRESS CITY

FIRE SPRINKLER SITE PLAN DRAWING

TITLE

REVISIONS

BY	DATE	DESCRIPTION

GENERAL

R & R CONSTRUCTION CONSULTING LLC

7809 PACIFIC AVE
TACOMA, WA 98408

CITY SUPER ADAM RAYGOR

JOB PHONE # 253-961-9976

FIELD INSPECTIONS

CITY OF PUYALLUP

NAME PHONE # (253) 864-4165

STANDARD SYMBOLS

Pipe Coupling	⊕
Pipe Drop	⊖
Pipe Rise	⊕
Pipe End Cap	⊕
2-WAY EARTHQUAKE BRACE	⊕
4-WAY EARTHQUAKE BRACE	⊕
PIPE HANGER	⊕
Hydraulic Reference Points	⊕
Elev. Below Top of Steel	⊕
Elev. Above Finished Floor	⊕
Coiling Height	⊕

WA. STATE LEVEL 3 STAMP

Expires 12/31/25

WASHINGTON STATE
CERTIFICATE OF COMPETENCY
FIRE SPRINKLER SYSTEMS

Joseph G. Faulkner
9451-0899-CEG Level 3
Sprinx Fire Protection, Inc.
SPRINFP011LS

Date

SCALE: 1" = 40'-0"

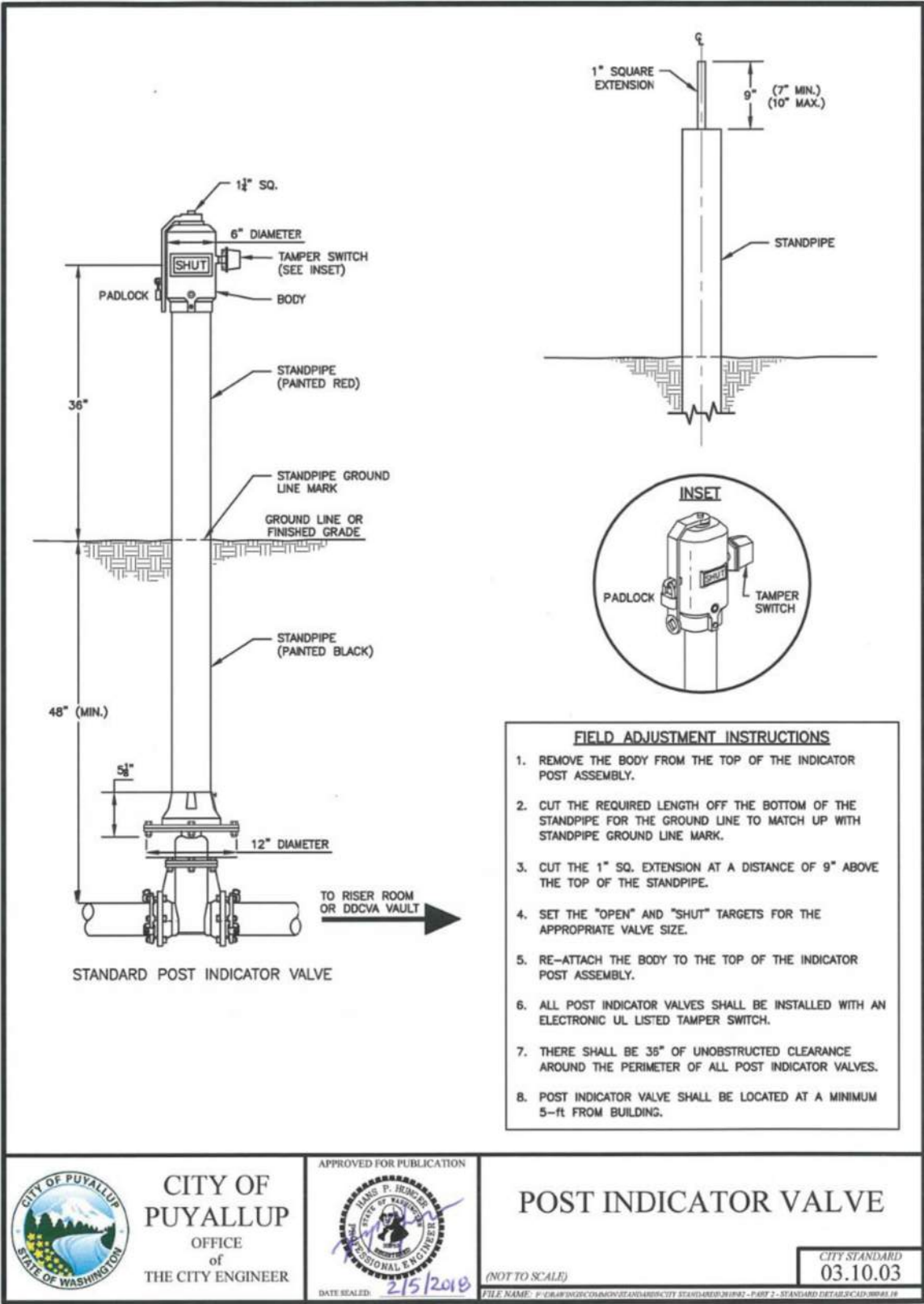
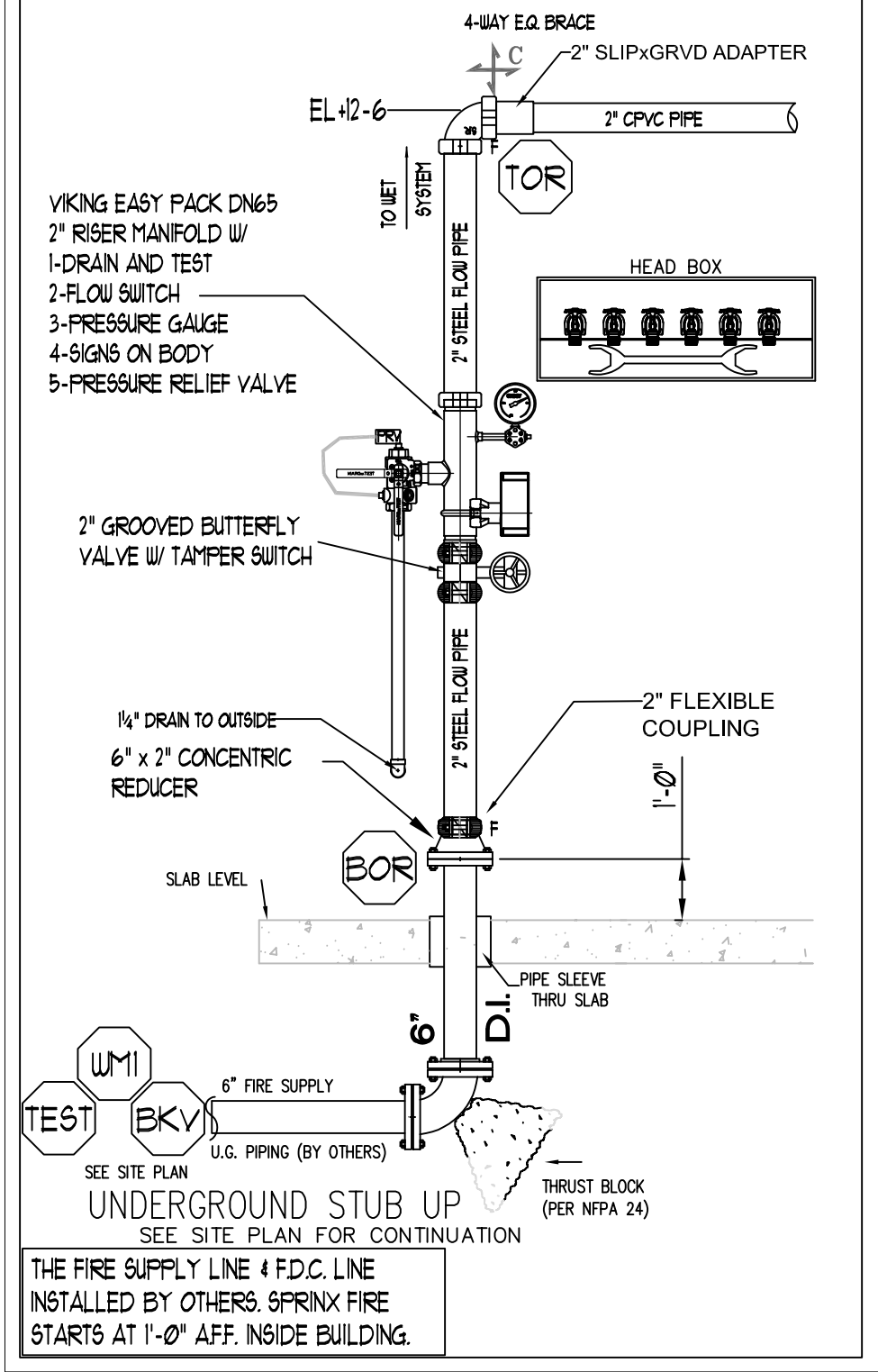
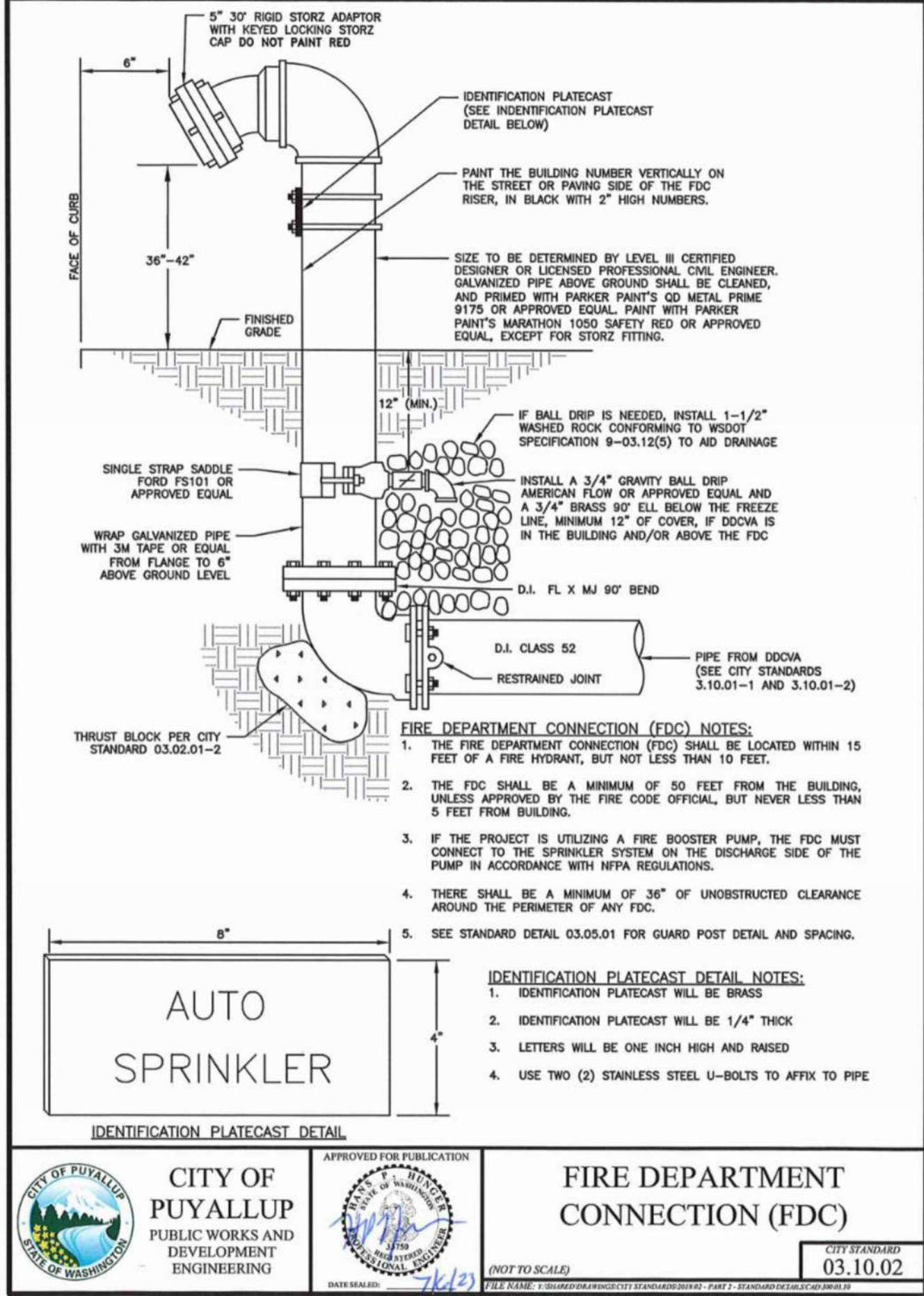
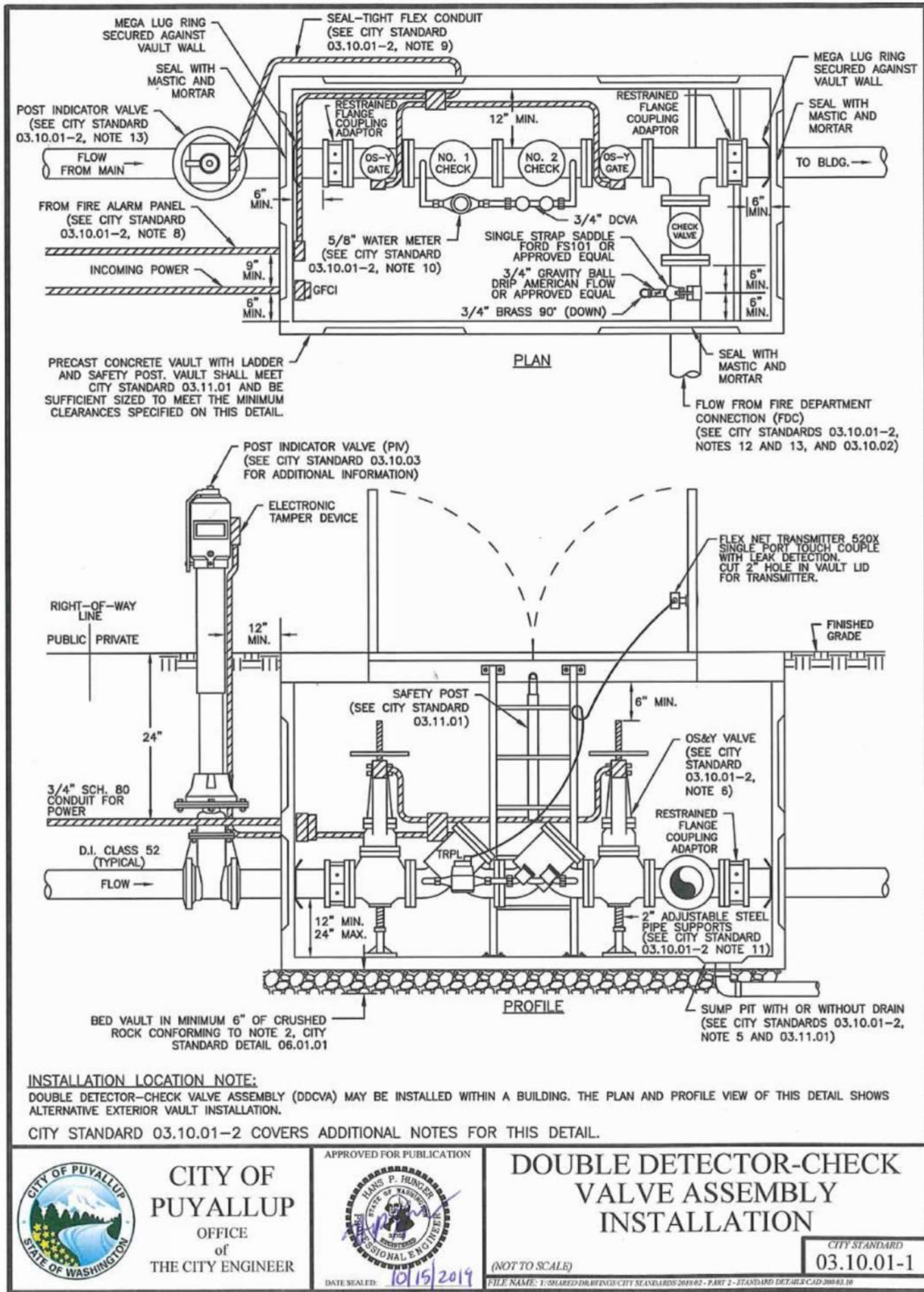
Project No. 24-093CM

Sheet Title: SITE PLAN

Sheet Number:

FP-1.0

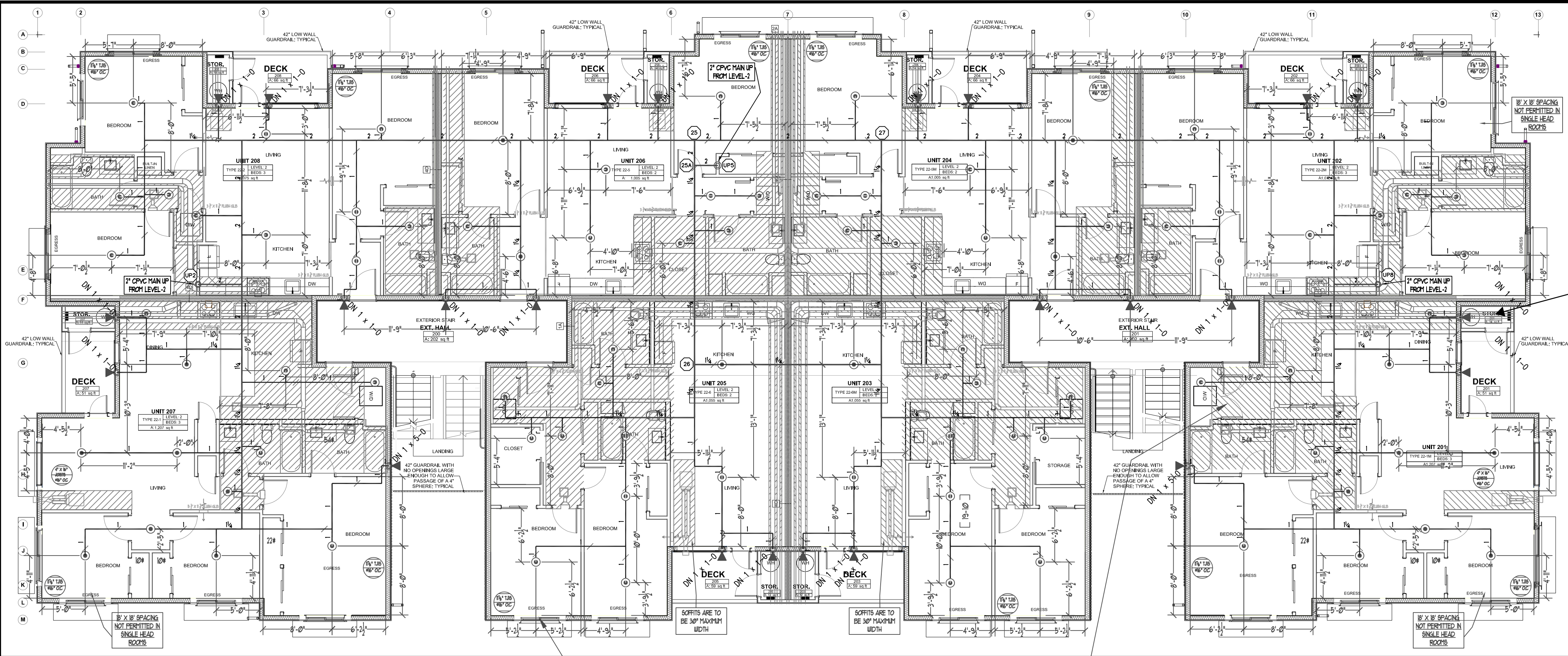
File Name: ETC SITE PLAN.dwg



- UNDERGROUND NOTES:**
- ALL UNDERGROUND BY OTHERS. CONTRACTOR TO BE STATE LICENSED AND CERTIFIED TO INSTALL UNDERGROUND PIPING PER WAC 212-80.
 - PIPE TYPE AND CLASS TO MEET LOCAL JURISDICTION APPROVAL.
 - ALL UNDERGROUND PIPING SHALL HAVE A MINIMUM 3'-0" BURY.
 - ALL UNDERGROUND PIPING SHALL BE U.L. LISTED AND/OR FM APPROVED FOR FIRE PROTECTION.
 - ALL UNDERGROUND PIPING SHALL BE RODDED AND/OR BLOCKED IN ACCORDANCE WITH THE SPECIFICATIONS AND NFPA 24.
 - ALL UNDERGROUND PIPING SHALL BE HYDROSTATICALLY TESTED AT NOT LESS THAN 200 PSI FOR TWO HOURS IN ACCORDANCE WITH NFPA 24.
 - ALL UNDERGROUND PIPING SHALL BE FLUSHED IN ACCORDANCE WITH NFPA 24. FLOW THE REQUIRED RATE UNTIL WATER IS CLEAR AS INDICATED BY NO COLLECTION OF FOREIGN MATERIAL IN BURLAP BAGS AT OUTLETS.
4" - 390 GPM 10" - 2,400 GPM
6" - 880 GPM 12" - 3,520 GPM
8" - 1,560 GPM
 - ALL UNDERGROUND INSTALLATION AND TESTING TO BE WITNESSED BY THE LOCAL AUTHORITY HAVING JURISDICTION.
 - WHERE PIPES PASSES THROUGH HOLES IN FOUNDATIONS, WALLS, OR FLOORS, THE HOLES OR SLEEVE SHALL BE SIZED 4 IN. LARGER THAN THE SUPPLY PIPE SIZE ON PIPES SIZED 4" OR LARGER.

PROJECT: EAST TOWN CROSSING BUILDING D		ADDRESS: 2902 E PIONEER		CITY: PUYALLUP, WA 98372		TITLE: SITE DETAILS	
BY: [Signature]		DATE: [Blank]		REVISIONS: [Blank]		DESCRIPTION: [Blank]	
GENERAL: R & R CONSTRUCTION CONSULTING LLC		ADDRESS: 7809 PACIFIC AVE		CITY: TACOMA, WA 98408		SUPER: ADAM RAYGOR	
JOB PHONE: 253-961-9976		FIELD INSPECTIONS		CITY OF PUYALLUP		PHONE: (253) 864-4165	
STANDARD SYMBOLS:		Pipe Coupling		Pipe Drop		Pipe Rise	
Pipe End Cap		2-WAY EARTHQUAKE BRACE		4-WAY EARTHQUAKE BRACE		PIPE HANGER	
Hydraulic Reference Points		Elev. Below Top of Steel		Elev. Above Finished Floor		Ceiling Height	
WA. STATE LEVEL 3 STAMP							
<div> <div> Expires 03/31/23 </div> <div> WASHINGTON STATE CERTIFICATE OF COMPETENCY FIRE SPRINKLER SYSTEMS Joseph G. Faulkner 9451-0599-CCEC Level 3 Sprinx Fire Protection, Inc. SPRINFP011LS 03/17/2024 </div> </div>							
<div> <div> City of Puyallup Development & Permitting Services ISSUED PERMIT </div> <div> Building Planning Engineering Public Works Fire Traffic </div> </div>							
<div> <div> Project No. 24-093CM Sheet Title: DETAILS Sheet Number: </div> <div> FP-1.1 </div> </div>							
File Name: ETC SITE PLAN.dwg							

SPRINKLER HEAD SCHEDULE					
SYMBOL	COUNT	THREAD	K-FACTOR	DESCRIPTION	NOTE
⊙	266	1/2"	4.9	HEAD1= VIKING VK468 WHITE RESIDENTIAL RECESSED PENDENT 175°F.	on Drop
◀	72	1"	5.6	SIDE1= VIKING VK178 OR CHROME DRY HORIZONTAL SIDEWALL 200°F.	
338 = TOTAL NUMBER OF HEADS BUILDING D					

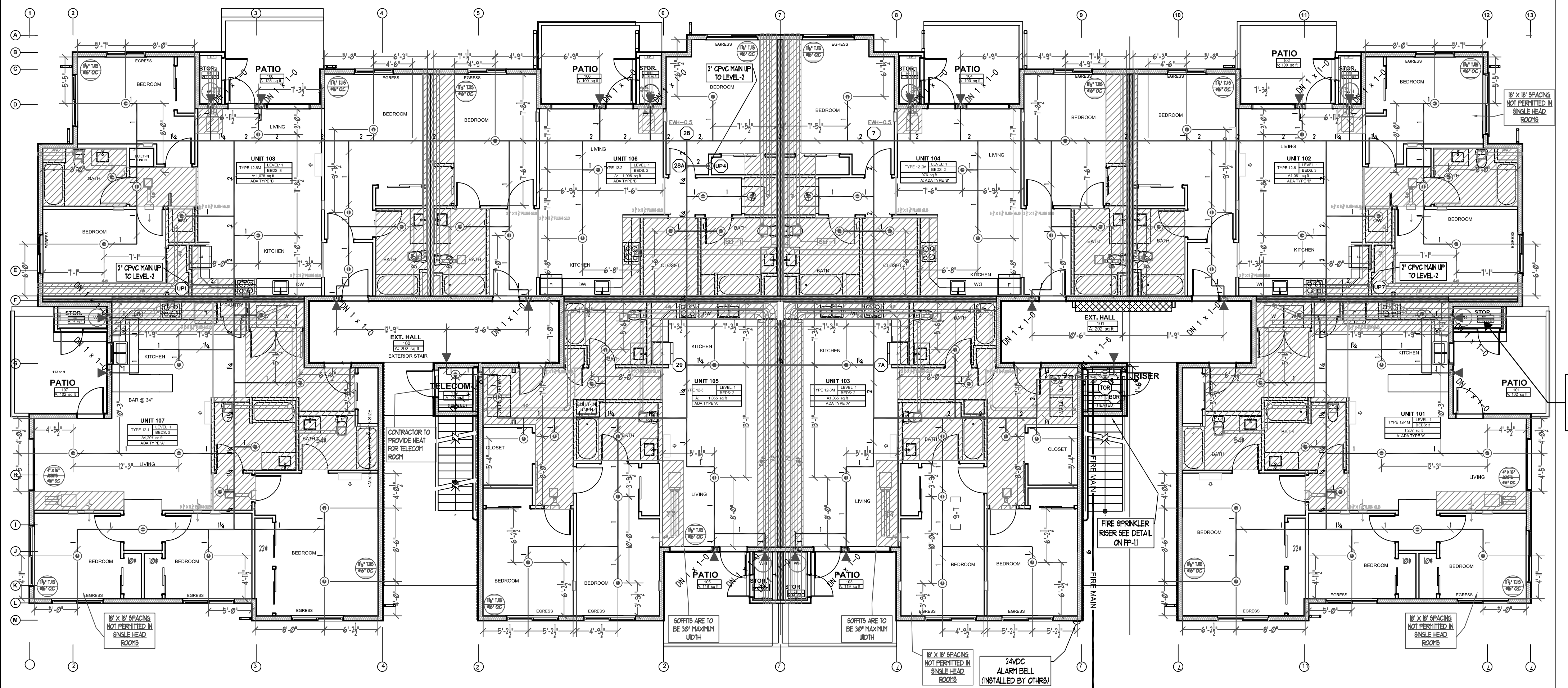


LEVEL-2 FIRE SPRINKLER PLAN
SCALE: 1/8" = 1'-0"
PROJECT NORTH

CONTRACTOR TO POSITION 2-4 LIGHTS IN ALL BEDROOMS
OFF CENTER BY MINIMUM OF 3'-0" TO ALLOW PROPER CLEARANCES
TO FIRE SPRINKLERS.

CONTRACTOR TO POSITION ALL COMMON SPACE LIGHTING
IN ACCORDANCE WITH NFPA 13

RESIDENTIAL SPRINKLERS
MAXIMUM SPACING 16' X 16'



LEVEL-1 FIRE SPRINKLER PLAN
SCALE: 1/8" = 1'-0"
PROJECT NORTH

City of Puyallup
Development & Permitting Services
ISSUED PERMIT

Building	Planning
Engineering	Public Works
Fire	Traffic

THE LOCAL AHJ REQUIRES
ALL STORAGE UNITS TO
BE SPRINKLERED FOR
THIS PROJECT.

THE LOCAL AHJ REQUIRES
ALL STORAGE UNITS TO
BE SPRINKLERED FOR
THIS PROJECT.

DROPPED CEILING

SCOPE OF WORK
INSTALL AUTOMATIC WET FIRE SPRINKLER SYSTEM FOR MULTI FAMILY DWELLING IN ACCORDANCE WITH NFPA 13R 2019 EDITION AND LOCAL AUTHORITY.

GENERAL NOTES

- ALL PIPING AND SPRINKLERS SHALL BE U.L. LISTED AND/OR F.M. APPROVED, AND SHALL BE NEW AND FREE OF DEFECTS.
- HANGER TYPES AND SPACING SHALL BE INSTALLED PER NFPA 13R AND MANUFACTURER'S LISTING.
- SPRINKLER LOCATIONS AND SPACING PER NFPA 13R AND MANUFACTURER'S LISTING. ANY AND ALL ALARM SYSTEM WIRING AND INSTALLATION IS BY OTHERS.
- ALL DRILLING AND BORING OF HOLES SHALL BE DONE IN STRICT ACCORDANCE WITH THE STRUCTURAL ENGINEER'S REQUIREMENTS. DO NOT UNDER ANY CIRCUMSTANCES CUT OR MODIFY PRE-MANUFACTURED TRUSSES.
- INSTALLER SHALL VERIFY FINISH CEILING ELEVATION, OBSTRUCTIONS, LIGHT FIXTURES, CABINETS, ETC PRIOR TO INSTALLATION OF SPRINKLER HEADS.
- ALL PENETRATIONS THROUGH FIRE RATED ASSEMBLIES SHALL BE FIRE STOPPED. FIRE STOPPING MATERIAL SHALL BE INSTALLED PER MANUFACTURER'S INSTRUCTION BY OTHERS.
- SPRINKLER PIPE SIZING HAS BEEN ESTABLISHED BY HYDRAULIC CALCULATIONS.
- IT IS THE OWNER'S RESPONSIBILITY TO PROVIDE A RELIABLE WATER SUPPLY THAT IS CAPABLE OF MEETING THE MOST DEMANDING AREA.

PROJECT DETAILS
NFPA CODE: 13R 2019
SYSTEM TYPE: WET SYSTEM
PIPE TYPE: BLACK BARRIER CPVC
MAX SPRINKLER SPACING REQUIREMENTS: 16'x16' @ 13 GPM, 18'x18' @ 17 GPM (1 HEAD RM.)
MINIMUM SPRINKLER SPACING: 8' BETWEEN SPRINKLERS
MINIMUM DESIGN DENSITY: 0.05 GPM/SQ.FT.

NFPA & AHJ REQUIREMENTS

- THE DESIGN DISCHARGE SHALL BE ALL OF THE SPRINKLERS WITHIN A SINGLE COMPARTMENT, UP TO A MAXIMUM OF FOUR SPRINKLERS, THAT REQUIRE THE GREATEST HYDRAULIC DEMAND.
- SPRINKLERS SHALL NOT BE REQUIRED IN BATHROOMS OF 55 SQ. FT. AND LESS.
- SPRINKLERS SHALL NOT BE REQUIRED IN CLOTHES CLOSETS, LINEN CLOSETS, AND PANTRIES THAT DO NOT EXCEED 24 SQ. FT. AND HAVE WALLS AND CEILINGS SURFACED WITH NONCOMBUSTIBLE OR LIMITED COMBUSTIBLE MATERIALS.
- SPRINKLERS SHALL NOT BE REQUIRED IN ATTICS OR CRAWLSPACES.
- SPRINKLER HEADS SHALL BE AT LEAST 3 FT. AWAY FROM CEILING FANS AND SURFACE MOUNTED LIGHT FIXTURES.
- ALL SPRINKLERS SHALL MAINTAIN THE MINIMUM REQUIRED DISTANCES FROM HEAT SOURCES IN ACCORDANCE WITH NFPA 13R.
- SPRINKLER HEADS UNDER SLOPE CEILINGS TO BE MEASURED ALONG THE SLOPE.

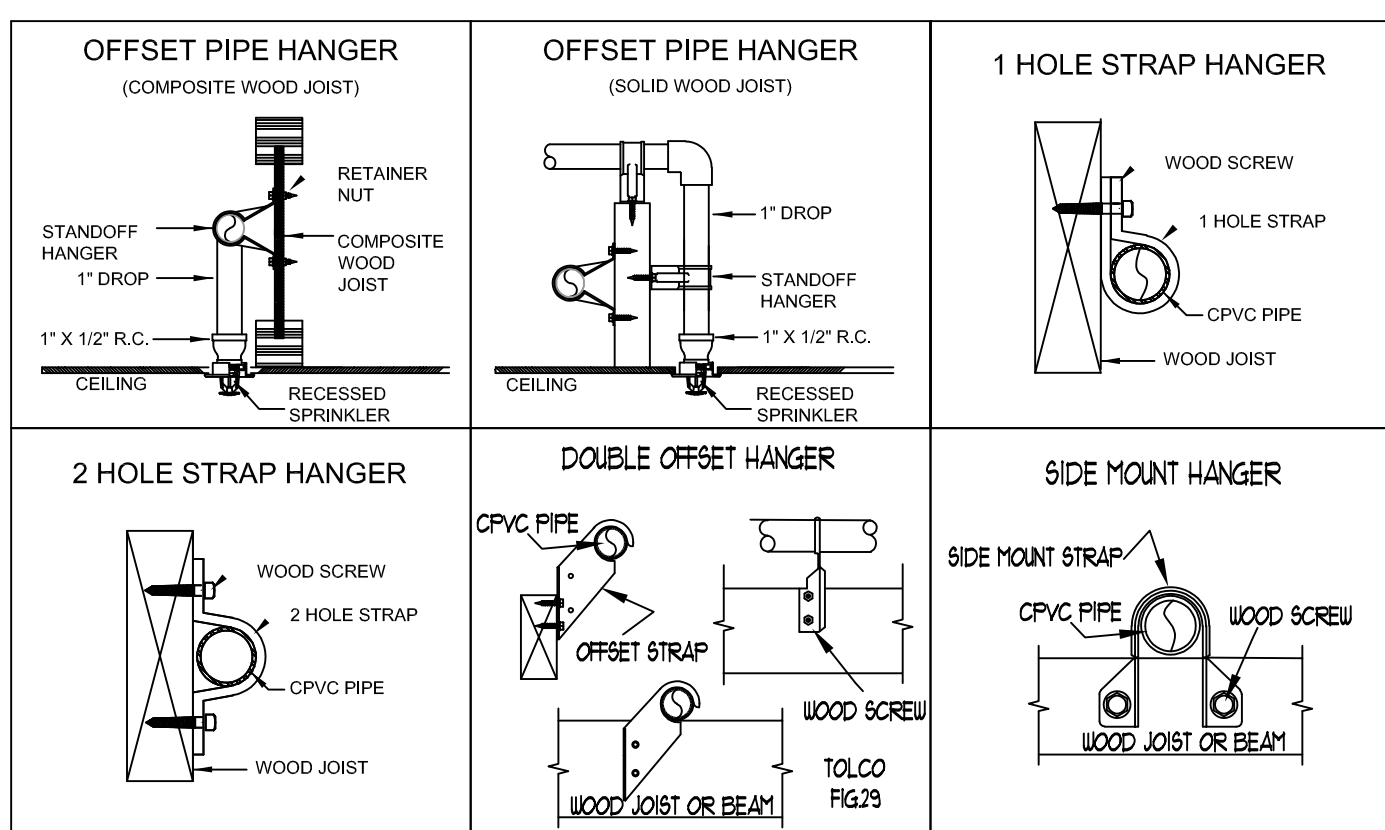
CPVC FIRE SPRINKLER PIPE GUIDELINES
INSTALLING CONTRACTOR TO PROVIDE AN INSTALLATION THAT IS IN 100% COMPLIANCE WITH THESE GUIDELINES. RESIDENTIAL DESIGN CANNOT BE RESPONSIBLE FOR THE WILLFUL OR NEGLIGENT ACTIONS OF OTHER PARTIES THAT DO NOT FOLLOW THE BELOW GUIDELINES.

THESE GUIDELINES ARE:

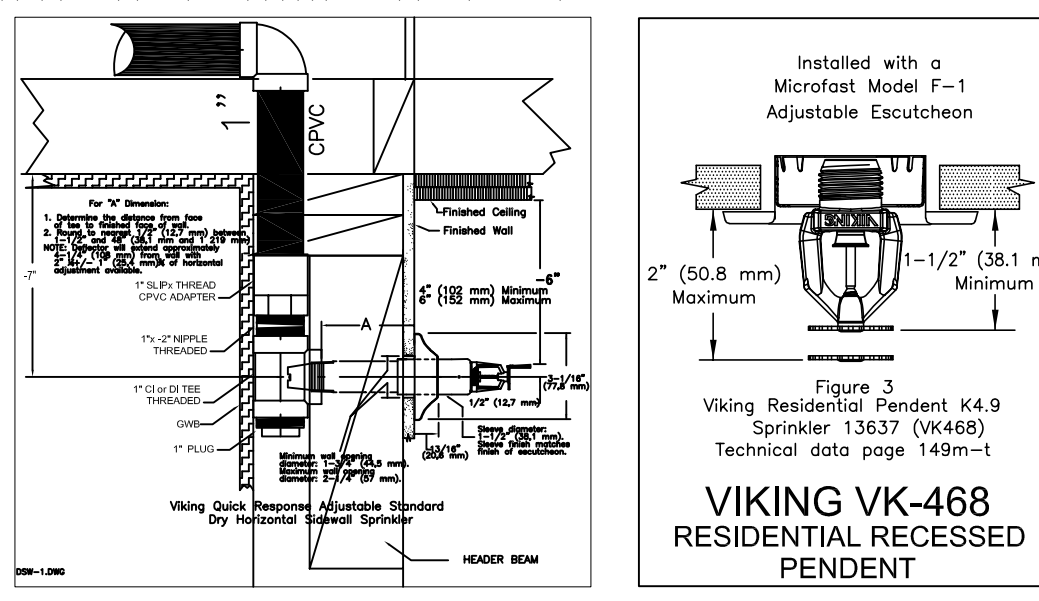
- DO NOT STACK, SUPPORT, HANG EQUIPMENT, OR HANG FLEXIBLE WIRE/CABLE, ESPECIALLY COMMUNICATIONS CABLE, OR OTHER MATERIAL, ON THE FIRE SPRINKLER.
- DO NOT EXPOSE CPVC PRODUCTS TO INCOMPATIBLE SUBSTANCES, SUCH AS CUTTING OILS, NON-WATER-BASED PAINTS, PACKING OILS, TRADITIONAL PIPE THREAD PASTE AND DOPE, FUNGICIDES, TERMITICIDES, INSECTICIDES, DETERGENTS, BULKING CAULKING, ADHESIVE TAPE, SOLDER FLUX, FLEXIBLE WIRE/CABLE (WITH SPECIAL CONSIDERATION FOR COMMUNICATIONS CABLE), AND NON-APPROVED SPRAY FOAM INSULATION MATERIALS.
- DO NOT EXPOSE CPVC PRODUCTS TO EDIBLE OILS, SOLVENTS, OR GLYCOL-BASED ANTI-FREEZE FLUIDS.
- DO NOT EXPOSE CPVC PRODUCTS TO OPEN FLAME, SOLDER, AND SOLDERING FLUX.
- DO NOT DROP, DISTORT, OR IMPACT CPVC PRODUCTS OR ALLOW OBJECTS TO BE DROPPED ON THEM.
- DO NOT HANDLE CPVC PRODUCTS WITH GLOVES CONTAMINATED WITH OILS (HYDROCARBONS) OR OTHER INCOMPATIBLE MATERIALS.
- DO NOT INJECT SYSTEM WITH M.I.C. INHIBITORS UNLESS THEY ARE LISTED IN COMBINATION WITH THIS SYSTEM.

FAILURE TO FOLLOW THIS NOTICE MAY CAUSE CRACKS OR FRACTURES TO DEVELOP IN CPVC PRODUCTS RESULTING IN PROPERTY DAMAGE DUE TO LEAKS OR FLOODING. THE PRESENCE OF ANY VISIBLE CRACKS MAY REQUIRE PARTIAL OR FULL SYSTEM REPLACEMENT.

FREEZE PROTECTION
THIS SYSTEM IS A WET SYSTEM. PRECAUTION MUST BE TAKEN TO PROTECT THE PIPING FROM EXTREME FREEZING TEMPERATURES. IT IS THE RESPONSIBILITY OF THE OWNER AND INSULATION INSTALLER TO ENSURE SUFFICIENT INSULATION IS PROVIDED AND INSTALLED CORRECTLY TO MAINTAIN ALL PIPING AT 40 DEG MINIMUM IN ALL AREAS. THE METHOD TO ACHIEVE THIS CONTROL OF TEMPERATURE SHALL BE IN ACCORDANCE WITH NFPA 13R. DESIGNER AND ENGINEER OF RECORD WILL NOT BE RESPONSIBLE FOR ANY FREEZING PIPE OR DAMAGE CAUSED BY FREEZING PIPING.



* DO NOT STUB DOWN DBU'S ON LEVELS 1 & 2
SEE DECK DETAILS & FREEZEWAY DETAILS ON FP-2.0



SPRINKLER HEAD SCHEDULE						
SYMBOL	COUNT	THREAD	K-FACTOR	DESCRIPTION		NOTE
⊙	266	1/2"	4.9	HEAD1= VIKING VK468 WHITE RESIDENTIAL RECESSED PENDENT 175°F.		on Drop
◀	72	1"	5.6	SIDE1= VIKING VK178 OR CHROME DRY HORIZONTAL SIDEWALL 200°F.		
338 = TOTAL NUMBER OF HEADS BUILDING D						

EAST TOWN CROSSING BUILDING D
2902 E PIONEER
PUYALLUP, WA 98372
FIRE SPRINKLER LEVELS 1 & 2 DRAWING

SPRINX
FIRE PROTECTION
A Fire Sprinkler Corporation
2709 JAHN AVE NW, SUITE 102
Gig Harbor, WA 98353-7735
Cell: 253.853.9599 Fax: 253.853.9590

REVISIONS

NO.	DATE	DESCRIPTION

STANDARD SYMBOLS

SYMBOL	DESCRIPTION
—	Pipe Coupling
—	Pipe Drop
—	Pipe Rise
—	Pipe End Cap
—	2-WAY EARTHQUAKE BRACE
—	PIPE HANGER
—	Hydraulic Reference Points
—	Elev. Below Top of Steel
—	Elev. Above Finished Floor
—	Ceiling Height

WA. STATE LEVEL 3 STAMP

CERTIFICATE OF COMPETENCY
Joseph G. Faulkner
9401-0899-CEG Level 3
Sprinx Fire Protection, Inc.
Signature: *Joseph G. Faulkner* Date: *03/13/2025*

VIKING VK-468
RESIDENTIAL RECESSED
PENDENT

Project No: 24-093CM
Sheet Title: BLDD-D LEVELS 1 & 2
Sheet Number: 1

FP-2.0
File Name: ETC Building D.dwg

Hydraulically Calculated System

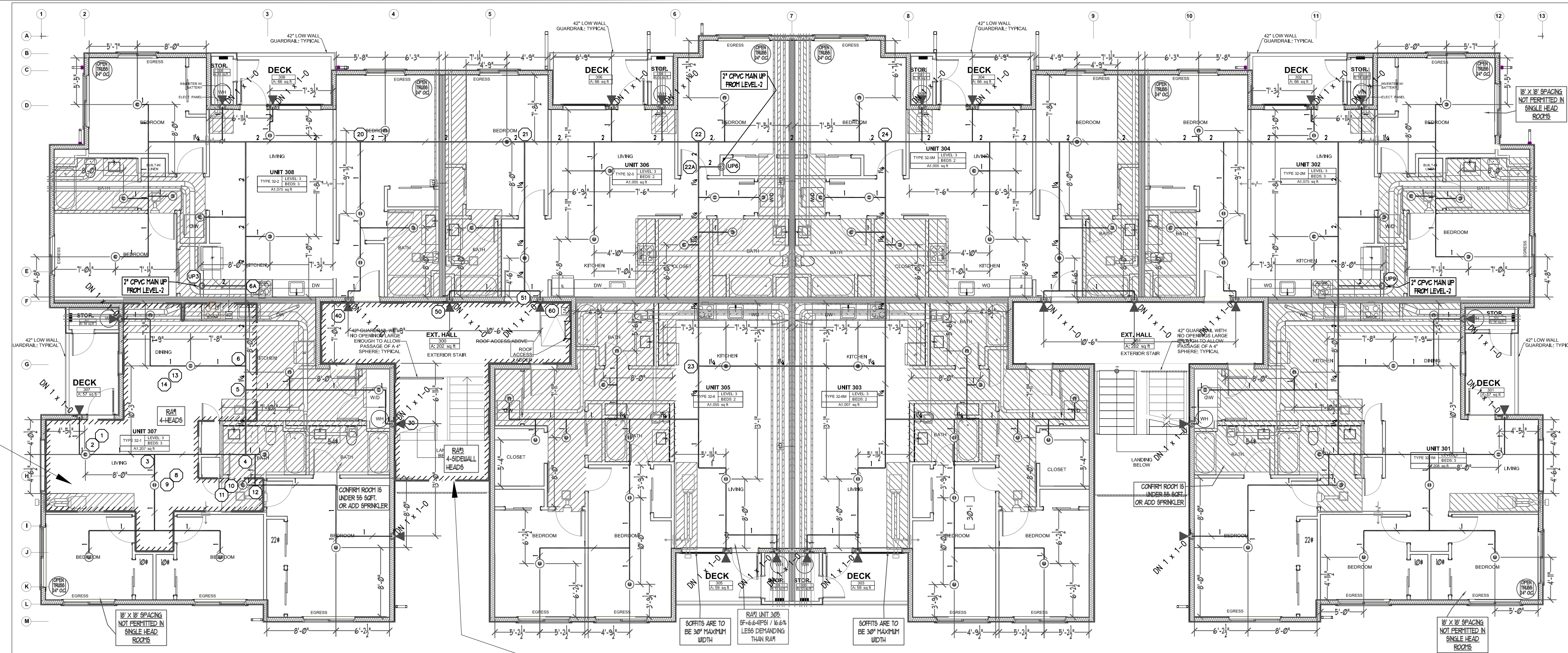
This system as shown on SPRINX FIRE PROTECTION company print no. FP-3.0 dated 3/13/2025 for REMOTE AREA 01 - LEVEL-3 UNIT 307 at ETC APTS. BUILDING-D contract no. 24-093CM is designed to discharge at a rate of .05 GPM (L/min) per sq ft (m2) of floor area over a maximum area of 16' x 16' MAX SPACING sq ft (m2) when supplied with water at the rate of 55.435 GPM (L/min) at 27.217 psi (bars) at the base of the riser. Hose stream allowance of 0 GPM (L/min) is included in the above.

Occupancy Classification NFPA-13R (2019)
Commodity Classification N/A
Maximum Storage Height N/A
Installed By: SPRINX FIRE PROTECTION, INC.

Hydraulic Calculation Data

Design Area Number: RA#1
Design Area Location: LEVEL-3 UNIT 307
Hazard/Occupancy: RESIDENTIAL NFPA 13R
Design Density: 0.05
Design Area: 256
Number of Sprinklers in Design Area: 4

System Flow: 55.435 @ TEST
System Pressure: 34.367 SAFETY FACTOR = 5.60 PSI @ 14.0%
Hose Allowance (Included): 0



LEVEL-3 FIRE SPRINKLER PLAN
SCALE: 1/8" = 1'-0"

PROJECT NORTH

Hydraulically Calculated System

This system as shown on SPRINX FIRE PROTECTION company print no. FP-3.0 dated 03/13/2025 for REMOTE AREA 03 - LEVEL-3 NORTH STAIRWELL at ETC APTS. BUILDING-D contract no. 24-093CM is designed to discharge at a rate of .10 GPM (L/min) per sq ft (m2) of floor area over a maximum area of 4 HEAD SIDEWALL CALC sq ft (m2) when supplied with water at the rate of 60.063 GPM (L/min) at 26.334 psi (bars) at the base of the riser. Hose stream allowance of 0 GPM (L/min) is included in the above.

Occupancy Classification NFPA-13R (2019)
Commodity Classification N/A
Maximum Storage Height N/A
Installed By: SPRINX FIRE PROTECTION, INC.

TABLE 1 MAXIMUM SUPPORT SPACING DISTANCE END LINE SPRINKLER HEAD DROP ELBOW		
PIPE SIZE Inches	SYSTEM PRESSURE	
	< 100 psi	> 100 psi
3/4"	9"	6"
1"	12"	9"
1 1/4"	16"	12"
1 1/2"-3"	24"	12"

TABLE 2 SOR D5 (ASTM F442) HANGER SPACING		
NOMINAL SIZE Inches (mm)	feet	MAX SPACING (ft)
3/4" (19.0)	55"	(11)
1" (25.4)	62"	(16)
1 1/4" (31.8)	65"	(16)
1 1/2" (40.0)	10"	(11)
2" (50.8)	50"	(12)
2 1/2" (63.5)	50"	(12)
3" (76.2)	50"	(12)

Note: Minimum Cure Prior To Pressure Testing (200 PSI)

Pipe Size	Ambient Temperature During Cure Period
3/4"	60 TO 120 Deg. F 40 TO 59 Deg. F 0 TO 39 Deg. F
1"	45 MINUTES 1 1/2 HOURS 24 HOURS
1 1/4" & 1 1/2"	45 MINUTES 1 1/2 HOURS 24 HOURS
2"	6 HOURS 16 HOURS 120 HOURS
2 1/2" & 3"	8 HOURS 72 HOURS *

* Solvent Cement can be applied at a temperature below 40 deg. F for 2" and larger, however the temperature of the system must be raised to 40 deg. F or higher and allowed to cure per the above recommendations prior to pressure testing. When bringing cement, pipe or fittings from the outside, be certain they are brought up to room temperature before using the 60 to 120 deg. F cure schedule.

Hydraulic Calculation Data

Design Area Number: RA#3
Design Area Location: LEVEL-3 SOUTH STAIRWELL
Hazard/Occupancy: LIGHT HAZARD
Design Density: 0.10
Design Area: 273sqft
Number of Sprinklers in Design Area: 4

System Flow: 60.313
System Pressure: 33.425 SAFETY FACTOR = 6.54 PSI @ 16.4%
Hose Allowance (Included): 0

RESIDENTIAL SPRINKLERS
MAXIMUM SPACING 16' X 16'

City of Puyallup
Development & Permitting Services
ISSUED PERMIT

Building	Planning
Engineering	Public Works
Fire	Traffic

SCOPE OF WORK

INSTALL AUTOMATIC WET FIRE SPRINKLER SYSTEM FOR MULTI FAMILY DWELLING IN ACCORDANCE WITH NFPA 13R 2019 EDITION AND LOCAL AUTHORITY.

GENERAL NOTES

- ALL PIPING AND SPRINKLERS SHALL BE U.L. LISTED AND/OR F.M. APPROVED, AND SHALL BE NEW AND FREE OF DEFECTS.
- HANGER TYPES AND SPACING SHALL BE INSTALLED PER NFPA 13R AND MANUFACTURER'S LISTING.
- SPRINKLER LOCATIONS AND SPACING PER NFPA 13R AND MANUFACTURER'S LISTING.
- ANY AND ALL ALARM SYSTEM WIRING AND INSTALLATION IS BY OTHERS.
- ALL DRILLING AND BORING OF HOLES SHALL BE DONE IN STRICT ACCORDANCE WITH THE STRUCTURAL ENGINEER'S REQUIREMENTS, DO NOT UNDER ANY CIRCUMSTANCES CUT OR MODIFY PRE-MANUFACTURED TRUSSES.
- INSTALLER SHALL VERIFY FINISH CEILING ELEVATION, OBSTRUCTIONS, LIGHT FIXTURES, CABINETS, ETC PRIOR TO INSTALLATION OF SPRINKLER HEADS.
- ALL PENETRATIONS THROUGH FIRE RATED ASSEMBLIES SHALL BE FIRE STOPPED. FIRE STOPPING MATERIAL SHALL BE INSTALLED PER MANUFACTURER'S INSTRUCTION BY OTHERS.
- SPRINKLER PIPE SIZING HAS BEEN ESTABLISHED BY HYDRAULIC CALCULATIONS.
- IT IS THE OWNER'S RESPONSIBILITY TO PROVIDE A RELIABLE WATER SUPPLY THAT IS CAPABLE OF MEETING THE MOST DEMANDING AREA.

PROJECT DETAILS

NFPA CODE: 13R 2019
SYSTEM TYPE: WET SYSTEM
PIPE TYPE: BLAZEMASTER CPVC
MAX SPRINKLER SPACING REQUIREMENTS: 16'x16' @13 GPM, 15'x15' @17 GPM (1 HEAD RM.)
MINIMUM SPRINKLER SPACING: 8' BETWEEN SPRINKLERS
MINIMUM DESIGN DENSITY: 0.05 GPM/SQ.FT.

NFPA & AHJ REQUIREMENTS

- THE DESIGN DENSITY SHALL BE ALL OF THE SPRINKLERS WITHIN A SINGLE COMPARTMENT, UP TO A MAXIMUM OF FOUR SPRINKLERS, THAT REQUIRE THE GREATEST HYDRAULIC DEMAND.
- SPRINKLERS SHALL NOT BE REQUIRED IN BATHROOMS OF 55 SQ. FT. AND LESS.
- SPRINKLERS SHALL NOT BE REQUIRED IN CLOSETS, LINEN CLOSETS, AND PANTRIES THAT DO NOT EXCEED 24 SQ. FT. AND HAVE WALLS AND CEILINGS SURFACED WITH NONCOMBUSTIBLE OR LIMITED COMBUSTIBLE MATERIALS.
- SPRINKLERS SHALL NOT BE REQUIRED IN ATTICS OR CRAWL SPACES.
- SPRINKLER HEADS SHALL BE AT LEAST 3 FT. AWAY FROM CEILING FANS AND SURFACE MOUNTED LIGHT FIXTURES.
- ALL SPRINKLERS SHALL MAINTAIN THE MINIMUM REQUIRED DISTANCES FROM HEAT SOURCES IN ACCORDANCE WITH NFPA 13R.
- SPRINKLER HEADS UNDER SLOPE CEILINGS TO BE MEASURED ALONG THE SLOPE.

CPVC FIRE SPRINKLER PIPE GUIDELINES

INSTALLING CONTRACTOR TO PROVIDE AN INSTALLATION THAT IS IN 100% COMPLIANCE WITH THESE GUIDELINES. RESIDENTIAL DESIGN CANNOT BE RESPONSIBLE FOR THE WILLFUL OR NEGLIGENT ACTIONS OF OTHER PARTIES THAT DO NOT FOLLOW THE BELOW GUIDELINES.

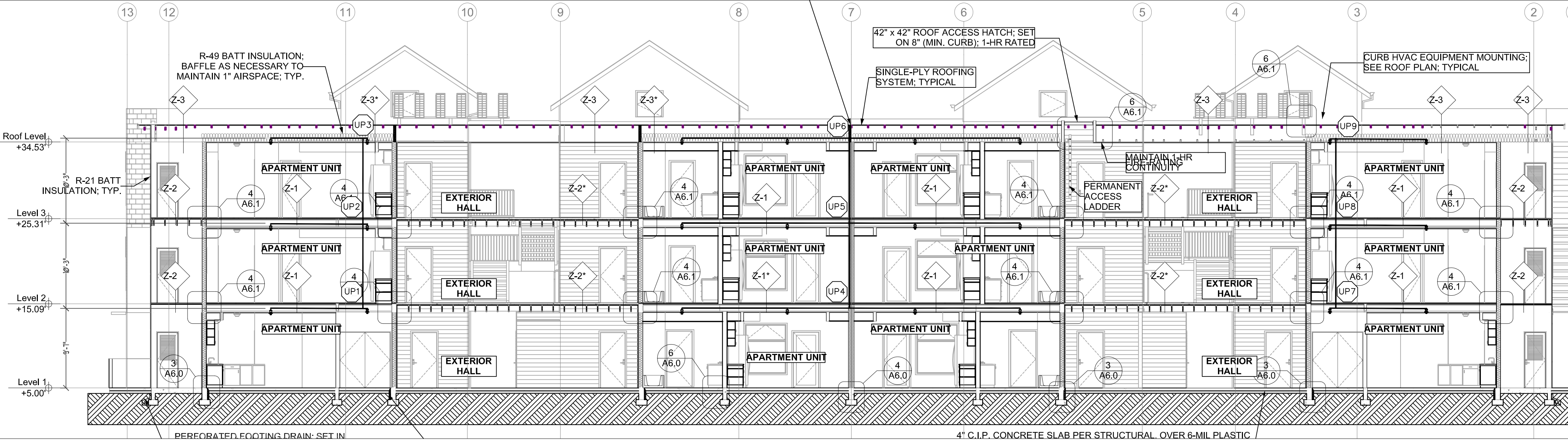
THESE GUIDELINES ARE:

- DO NOT STACK, SUPPORT, HANG EQUIPMENT, OR HANG FLEXIBLE WIRE/CABLE, ESPECIALLY COMMUNICATIONS CABLE, OR OTHER MATERIAL ON THE FIRE SPRINKLER.
- DO NOT EXPOSE CPVC PRODUCTS TO INCOMPATIBLE SUBSTANCES, SUCH AS CUTTING OILS, NON-WATER-BASED PAINTS, PACKING OILS, TRADITIONAL PIPE THREAD PASTE AND DOPE, FUNGICIDES, INSECTICIDES, DETERGENTS, BULKING CAULKING, ADHESIVE TAPE, SOLDER FLUX, FLEXIBLE WIRE/CABLE (WITH SPECIAL CONSIDERATION FOR COMMUNICATIONS CABLEING), AND NON-APPROVED SPRAY FOAM INSULATION MATERIALS.
- DO NOT EXPOSE CPVC PRODUCTS TO EDIBLE OILS, SOLVENTS, OR GLYCOL-BASED ANTI-FREEZE FLUIDS.
- DO NOT EXPOSE CPVC PRODUCTS TO OPEN FLAME, SOLDER, AND SOLDERING FLUX.
- DO NOT DROP, DISTORT, OR IMPACT CPVC PRODUCTS OR ALLOW OBJECTS TO BE DROPPED ON THEM.
- DO NOT HANDLE CPVC PRODUCTS WITH GLOVES CONTAMINATED WITH OILS (HYDROCARBONS) OR OTHER INCOMPATIBLE MATERIALS.
- DO NOT INJECT SYSTEM WITH M.I.C. INHIBITORS UNLESS THEY ARE LISTED IN COMBINATION WITH THIS SYSTEM.

FAILURE TO FOLLOW THIS NOTICE MAY CAUSE CRACKS OR FRACTURES TO DEVELOP IN CPVC PRODUCTS RESULTING IN PROPERTY DAMAGE DUE TO LEAKS OR FLOODING. THE PRESENCE OF ANY VISIBLE CRACKS MAY REQUIRE PARTIAL OR FULL SYSTEM REPLACEMENT.

FREEZE PROTECTION

THIS SYSTEM IS A WET SYSTEM, PRECAUTION MUST BE TAKEN TO PROTECT THE PIPING FROM EXTREME FREEZING TEMPERATURES. IT IS THE RESPONSIBILITY OF THE OWNER AND INSULATION INSTALLER TO ENSURE SUFFICIENT INSULATION IS PROVIDED AND INSTALLED CORRECTLY TO MAINTAIN ALL PIPING AT 40 DEG MINIMUM IN ALL AREAS. THE METHOD TO ACHIEVE THIS CONTROL OF TEMPERATURE SHALL BE IN ACCORDANCE WITH NFPA 13R, DESIGNER AND ENGINEER OF RECORD WILL NOT BE RESPONSIBLE FOR ANY FREEZING PIPE OR DAMAGE CAUSED BY FREEZING PIPING.



STANDARD SYMBOLS

Pipe Coupling	1" DROP	1 HOLE STRAP HANGER
Pipe Drop	1" DROP	WOOD SCREW
Pipe Rise	1" DROP	1 HOLE STRAP
Pipe End Cap	1" DROP	CPVC PIPE
2-WAY EARTHQUAKE BRACE	1" DROP	WOOD JOIST
4-WAY EARTHQUAKE BRACE	1" DROP	WOOD JOIST
PIPE HANGER	1" DROP	WOOD JOIST
Hydraulic Reference Points	1" DROP	WOOD JOIST
Elev. Below Top of Steel	1" DROP	WOOD JOIST
Elev. Above Finished Floor	1" DROP	WOOD JOIST
CEILING HEIGHT	1" DROP	WOOD JOIST

WA. STATE LEVEL 3 STAMP

SPRINKLER HEAD SCHEDULE

SYMBOL	COUNT	THREAD	K-FACTOR	DESCRIPTION	NOTE
●	266	1/2"	4.9	HEAD1= VIKING VK468 WHITE RESIDENTIAL RECESSED PENDENT 175°F.	on Drop
◀	72	1"	5.6	SIDE1= VIKING VK178 OR CHROME DRY HORIZONTAL SIDEWALL 200°F.	

338 = TOTAL NUMBER OF HEADS BUILDING D

SPRINKLER HEAD SCHEDULE

DO NOT STUB DOWN DWS ON LEVELS 1&2
SEE DECK DETAILS & FREEZEWAY DETAILS ON FP-2.0

VIKING VK-468 RESIDENTIAL RECESSED PENDENT

Installed with a Microstat Model F-1 Adjustable Escutcheon

Figure 3.3
Viking Residential Pendant K4.9
Sprinkler 13637 (VK468)
Technical data page 149m-t

BUILDING SECTION 2
SCALE: 1/8" = 1'-0"

0 4' 8' 16'

SPRINX FIRE PROTECTION
EST. 1999
2709 JAHN AVE NW, SUITE 102
Gig Harbor, WA 98353-7755
Fax: 253.853.5890

EAST TOWN CROSSING BUILDING D
PROJECT: 2902 E PIONEER
ADDRESS: PUYALLUP, WA 98372
CITY: FIRE SPRINKLER LEVEL 3 DRAWING

REVISIONS

DISCREPTION	DATE

GENERAL

GENERAL	MKM LEGACY LLC
ADDRESS	7809 PACIFIC AVE
CITY	TACOMA, WA 98408
SUPER	ADAM RAYGOR
JOB PHONE #	253-961-9976

FIELD INSPECTIONS

NAME	CITY OF PUYALLUP
PHONE #	(253) 864-4165

WASHINGTON STATE CERTIFICATE OF COMPETENCY FIRE SPRINKLER SYSTEMS

Joseph G. Faulkner
9491-0699-CEG Level 3
Sprinx Fire Protection, Inc.
SPRINXFP011LS
Signature: *Joseph G. Faulkner* Date: *03/11/2025*

SCALE: 1/8" = 1'-0"

Project No: 24-093CM
Sheet Title: BUILDING D LEVEL 3
Sheet Number: FP-3.0

File Name: ETC Building D.dwg