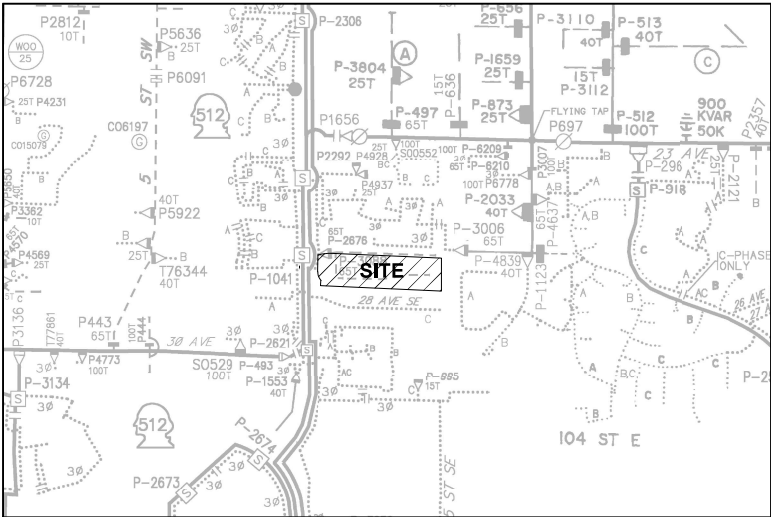


Any public curb, gutter, or sidewalk broken now or during the course of construction shall be removed and replaced per City Standards.



EX OVERHEAD CIRCUIT MAP 1904E008
SCALE: 6" = 1 MILE

AT P05 (567336-155441) 40' CLASS 3, 1968
POLE TO REMAIN
-REMOVE EXISTING 1Ø C/O (E) (SWITCH# P2676)

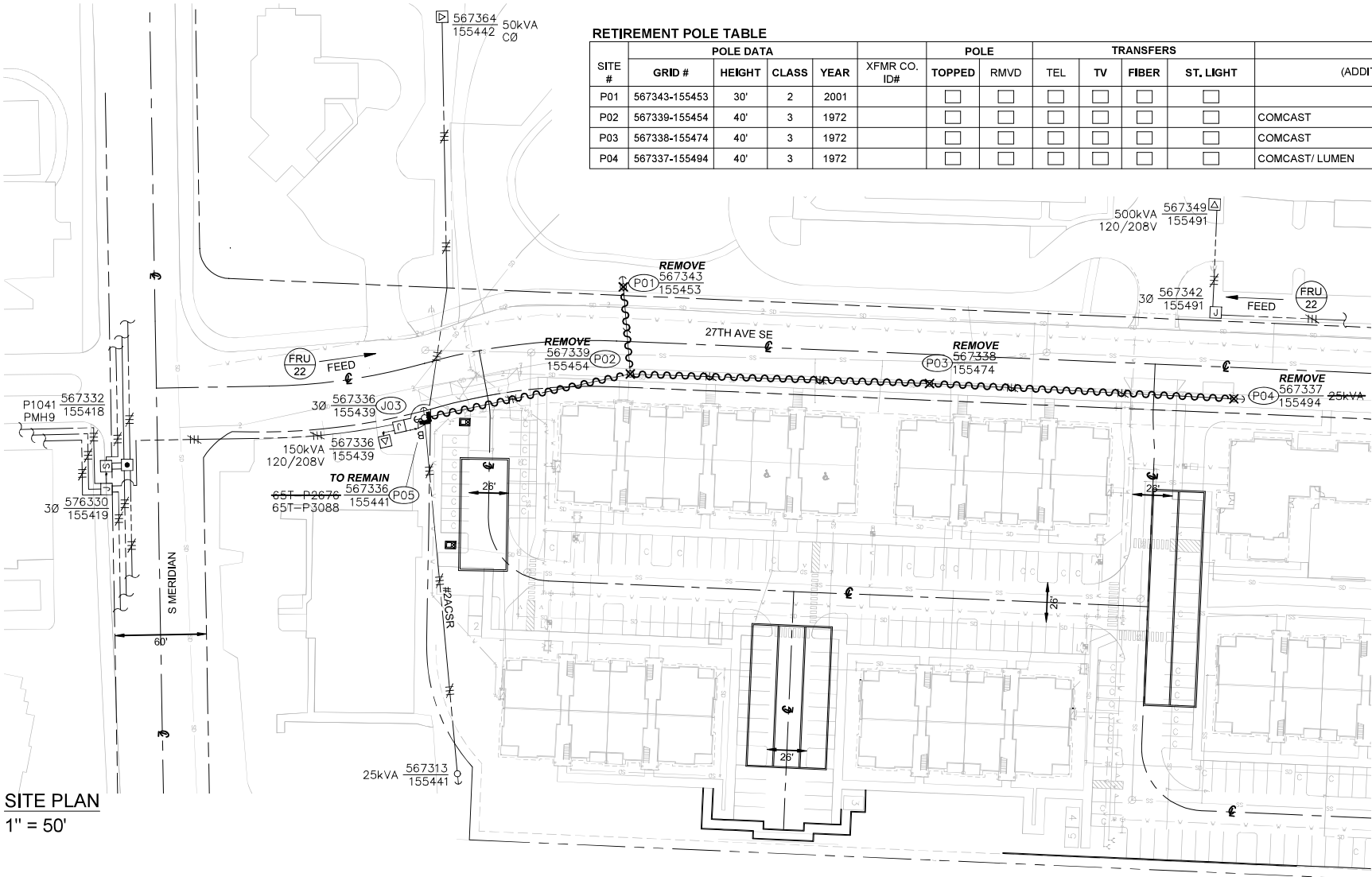
—

- POLES ARE TO BE INSTALLED OR RELOCATED AS STAKED. UNLESS OTHERWISE NOTED, ALL POLE LOCATION MEASUREMENTS ARE FROM THE CENTER OF THE POLE.
- ALL NEW POLES SET SHALL BE THE CLASS INDICATED ON THE SKETCH, OR BETTER. DO NOT SET A LOWER CLASS POLE THAN SPECIFIED.
- INSTALL GROUND PLATE ASSEMBLY ON ALL NEW POLES. INSTALL SWITCH GROUND ASSEMBLY PER STANDARD SPECIFICATION 6014.1000 AT NEW GAW OPERATED SWITCH LOCATIONS.
- INSTALL GRID NUMBERS ON ALL NEW AND EXISTING POLES AS SHOWN ON SKETCH.
- STRAIGHTEN EXISTING POLES AS INDICATED OR AS NECESSARY.
- TREAT ALL FIELD-DRILLED POLES WITH COPPER NAPHTHENATE WOOD PRESERVATIVE.
- REMOVE OLD POLES AFTER COMMUNICATION COMPANIES HAVE TRANSFERRED OFF AND RETURN TO PSE STOREROOM. FILL AND CROWN POLE HOLES AND RESTORE THE AREA SIMILAR TO ADJACENT LANDSCAPING.

- TRANSFER ALL OVERHEAD AND UNDERGROUND PRIMARY, SECONDARY AND SERVICE CONDUCTORS AND GUYS TO NEW POLES SET, UNLESS OTHERWISE INDICATED ON THIS SKETCH.
- TRANSFER EXISTING TRANSFORMERS TO NEW POLES UNLESS OTHERWISE INDICATED ON THIS SKETCH.
- USE STIRRUPS TO CONNECT ALL OVERHEAD AND UNDERGROUND PRIMARY TAPS, AND TRANSFORMERS ABOVE 25 KVA, INSTALL AT ALL SITES BEING WORKED WITHIN THE SCOPE OF THE PROJECT WHERE THEY ARE CURRENTLY MISSING.
- FOR 12KV CONSTRUCTION, INSTALL AVIAN PROTECTION WITH #4 CU-COVERED JUMPERS (MD#9998076) AND #4 SD ALUMINUM COVERED TIE-WIRE (MD#8309760). FOR 34KV CONSTRUCTION USE BARE WIRE PRIMARY JUMPERS WITH PRE-FORMED HELICAL-GRIP TIES AND AVIAN PROTECTION DEVICES WHEN REQUIRED PER STD. 6015-2000. JUMPERS FOR POLES THAT ARE DOUBLE DEAD ENDED WITH TREE WIRE CAN BE EITHER THE SAME SIZE TREE WIRE CONDUCTOR OR COVERED CU.
- APPLY GRIT INHIBITOR ON ALL AMPACT, STIRRUP, AND DEAD-END CONNECTIONS.
- CONNECT PRIMARY TAPS AND TRANSFORMERS TO SAME PHASE AS EXISTING UNLESS OTHERWISE SHOWN ON THE DRAWING.
- ALL NEUTRAL CONNECTIONS TO BE MADE WITH SOLID COMPRESSION CONNECTORS. CONNECT ALL POLE GROUNDS TO COMMON NEUTRAL.
- USE LOAD-INTERRUPTER CUTOUTS (WITH ARC SHIELDS) ON ALL PRIMARY OVERHEADS AND UNDERGROUND TAPS WITH FUSED PROTECTION ABOVE 40T.
- INSTALL WLDLIFE PROTECTORS ON ALL TRANSFORMERS.

1. POLES, CONDUCTOR DEVICES TO BE INSTALLED PER PSE STANDARDS & SPECIFICATIONS.
2. POLES ARE TO BE INSTALLED OR RELOCATED AS STAKED.
3. ALL NEW POLES SET SHALL BE THE CLASS INDICATED ON THE SKETCH OR BETTER.
4. INSTALL GROUND PLATE ASSEMBLY ON ALL NEW POLES.
5. INSTALL GRID NUMBERS ON ALL NEW AND EXISTING POLES AS SHOWN ON SKETCH.
6. TREAT ALL FIELD-DRILLED POLES WITH COPPER NAPHTHENATE WOOD PRESERVATIVE.

Location		Pri	Sec	Wire Size & Type	Quantity	Length (ft per conductor)	Remarks
From	To						
P05	P02	X		#2ACSR PRI & NEUT	2	140	
P02	P04	X		#2ACSR PRI & NEUT	2	400	
				Total Feet (#2ACSR PRI) Removed		540	
				Total Feet (#2ACSR NEUT) Removed		540	

[illegible]

EROSION & SEDIMENT CONTROL SHALL BE PER PSE STANDARD PRACTICE 0150.3200 TECHNIQUES FOR TEMPORARY EROSION & SEDIMENT CONTROL & ANY ADDITIONAL LOCAL JURISDICTION REQUIREMENTS, (LOCAL JURISDICTIONS MAY HAVE ADDITIONAL REQUIREMENTS INCLUDING NOTES DETAILING WHERE EROSION OR SEDIMENT CONTROL STRUCTURES ARE TO BE INSTALLED, CROSS SECTION DETAILS OF THE TYPICAL EROSION STRUCTURES, & SPECIAL REQUIREMENTS FOR WORK IN SENSITIVE AREAS.)

FOREMAN (CHECK BOX WHEN COMPLETED)

☐ PSE Equipment **LOCKED/SECURED** & Work Area **Left in CLEAN/SAFE** Condition, Grid, Cables, and Components **INSTALLED & VERIFIED.**

☐ Field Changes **REQUIRED** in current location on As-Built.

☐ Material **VERIFIED** and **CHANGES** noted on Paperwork, total **PRIMARY Cables** noted on As-Built.

☐ Company **LOG** **RECORDED** in correct location on As-Built.

☐ Indicate correct **FUSE SIZE** on As-Built & **VERIFY** proper **PHASE.**

☐ Deviations noted on the As-Built and their reason.

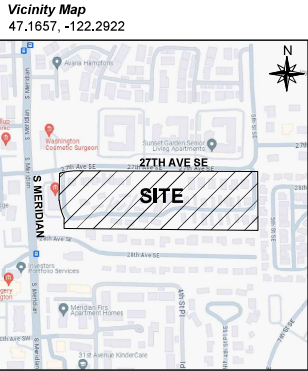
☐ I certify that the work performed meets PSE's standards and procedures and that all quality requirements are met.

Foreman's Signature _____

Print Name _____ Date _____

PROJECT Phase		NOTIF#	ORDER#
PWR	Superior	516004923	108163174
	OH Transformer	N/A	583079409
	OH Modification	N/A	593263051
	Removal	N/A	N/A
	Temporary	N/A	N/A
	Job Order	N/A	N/A
GAS	Distribution	N/A	N/A
	Service Stubs	N/A	N/A
	HP Svc/MSA	N/A	N/A
CABLE TV			
PHONE			

Project Manager Contact Information:
Manager: DON BETTENCOURT
Cell Phone: 206.445.5958
E-Mail: Don.Bettencourt@pse.com



ELAINE@TIMBERLANEPARTNERS.COM
-Owner / Developer Contact Info -
 BRADLEY HEIGHTS SS, LLC
 614 BOYLSTON AVE E
 SEATTLE, WA 98102
 ATTN: ELAINE PALAQIOS 206.649.0621 office

For contacts below dial 1-888-CALL PSE (225-5773)

CALL (800) 424-5555
BEFORE YOU BUY

2 BUSINESS DAYS BEFORE YOU DIG

	<u>Developer</u>	Yes X	Yes	<u>PSE</u>
"Locates Required"	No		No X	
"Outages Required"	Yes X		No	
"Flagging Required"	Yes X		No	

3	-	-	-	FUNCTION				CONTACT	PHONE NO	DATE
2	-	-	-	PROJECT MGR				D.BETTENCOURT	206,445,9598	.
1	-	-	-	ENGR - POWER				D. HLETKO	.	03,14,25
REV#	DATE	BY	DESCRIPTION				ENGR - GAS	N/A	.	N/A
COUNTY	PIERCE	Emer Sect N/A	Gas Wk Ctr N/A	POWER WK CTR OSWPRE		DRAWN BY		D. WALKER	.	02,27,25
1/4 SEC	OP MAP	N/A		PLAT MAP		CHECKED BY				
03NW-T19N-R04E	N/A		N/A		APPROVED BY		FOREMAN #1			
U-MAP NO (POWER)	OH CKT MAP	UG CKT MAP	CIRCUIT NO		FOREMAN #2					
1904E010	1904E008	1904E010	FRLU22		MAPPING					

JOINT FACILITIES ARRANGEMENTS				
UTILITIES	COMCAST	LUMEN	RIGHT OF WAY	.
CONTACT	BART SISTEK	.	CAROLYN BANASKY	.
PHONE#	425.293.1340		253.476.6416	

City of Puyallup
Development & Permitting Services
ISSUED PERMIT

Building	Planning
Engineering	Public Works
Fire	Traffic

 PUGET SOUND ENERGY	BRADLEY HEIGHTS POLE REMOVAL		INCIDENT N/A	MAOP N/A
	REMOVE (4) POLES		Gas Order N/A	Elect Order 108163174
	202 27TH AVE SE, PUYALLUP, WA 98374		SCALE AS SHOWN	PAGE 1 OF 1
DESIGNED BY PUGET SOUND ENERGY				