



## Model G5 Series Sprinklers

Standard Spray, Flat Concealed Pendent

Available with Gasketed Cover Plate

### Features

- Standard Coverage, Concealed Pendent (K2.8, 4.2, 5.6, & 8.0 [40, 60, 80, & 115 metric])
- Flat concealed cover plate available in a variety of finishes.
- Available with Stainless Steel Clad cover plate (see Table I).
- 3/4-inch (19 mm) cover plate adjustment.
- Cover plate available with optional gasket.

### Product Description

Model G5 series sprinklers are standard coverage, flat plate concealed sprinklers designed for installation in accordance with NFPA 13 and FM Global Property Loss Prevention Data Sheets. All Model G5 series sprinklers use a fusible-link operating element.

The sprinklers are offered with a standard Model G5 cover plate, a Model G5 cover plate with a quick-response (QR) gasket, or a Model G5 cover plate with a standard-response (SR) gasket. Model G5 sprinklers with a gasketed cover plate are intended for use in dust free environments such as clean rooms.

Model G5 sprinklers must only be used with the Model G5 cover plate listed or approved with the sprinkler. Table A provides a summary of available Model G5 series sprinklers, along with Listing and Approval information for each sprinkler and cover plate combination.



Model G5 Cover Plate



Model G5 Cover Plate with QR Gasket



Model G5 Cover Plate with SR Gasket

**Note:** Gasket material is silicone rubber, available in white only.

Model G5 Series Sprinkler Summary

Table A

Sprinkler Model	K-Factor gpm/psi <sup>1/2</sup> (L/min/bar <sup>1/2</sup> )	Cover Plate Model	Listings and Approvals	Sensitivity	Max. Working Pressure psi (bar)	Sprinkler Identification Number (SIN)
G5-28	2.8 (40)	G5	cULus	QR	175 (12)	RA3411
			FM	SR		
		G5 QR Gasket	cULus	QR		
		G5 SR Gasket	cULus, FM	SR		
G5-42	4.2 (60)	G5	cULus	QR	175 (12)	RA3413
		G5 QR Gasket		QR		
		G5 SR Gasket		SR		
G5-56	5.6 (80)	G5	cULus	QR	250 (17)	RA3415
			FM, LPCB, VdS, CE	SR	175 (12)	
		G5 QR Gasket	cULus	QR	250 (17)	
		G5 SR Gasket	cULus	SR	250 (17)	
			FM	SR	175 (12)	
G5-56 300	5.6 (80)	G5	cULus	QR	300 (21)	RA4014
		G5 QR Gasket		QR		
		G5 SR Gasket		SR		
G5-80	8.0 (115)	G5	cULus	QR	175 (12)	RA3412
		G5 QR Gasket		QR		
		G5 SR Gasket		SR		
G5-80F	8.0 (115)	G5	FM	SR	175 (12)	RA3417
		G5 SR Gasket				

**Technical Specifications**

**Style:** Flat Concealed Pendent  
**Threads:** 1/2" NPT or ISO 7-1 R1/2  
**Nominal K-Factor:** 2.8 (40 metric)  
**Max. Working Pressure:** 175 psi (12 bar)

**Material Specifications**

**Fusible Link:** Beryllium Nickel  
**Sprinkler Body:** Brass Alloy  
**Levers:** Bronze Alloy  
**Yoke:** Brass Alloy  
**Sealing washer:** Nickel with PTFE  
**Load Screw:** Bronze Alloy  
**Towers:** Copper Alloy  
**Pins:** Stainless Steel  
**Deflector:** Bronze Alloy  
**Cup:** Steel

**Sprinkler Temperature Ratings**

165°F (74°C)  
 212°F (100°C)

**Sensitivity**

(See Table B)

**Cover Plates**

Model G5  
 Model G5 QR Gasket (cULus only)  
 Model G5 SR Gasket

**Cover Plate Finishes**

(See Table I)

**Sprinkler Wrench**

Model W3  
 Model FC

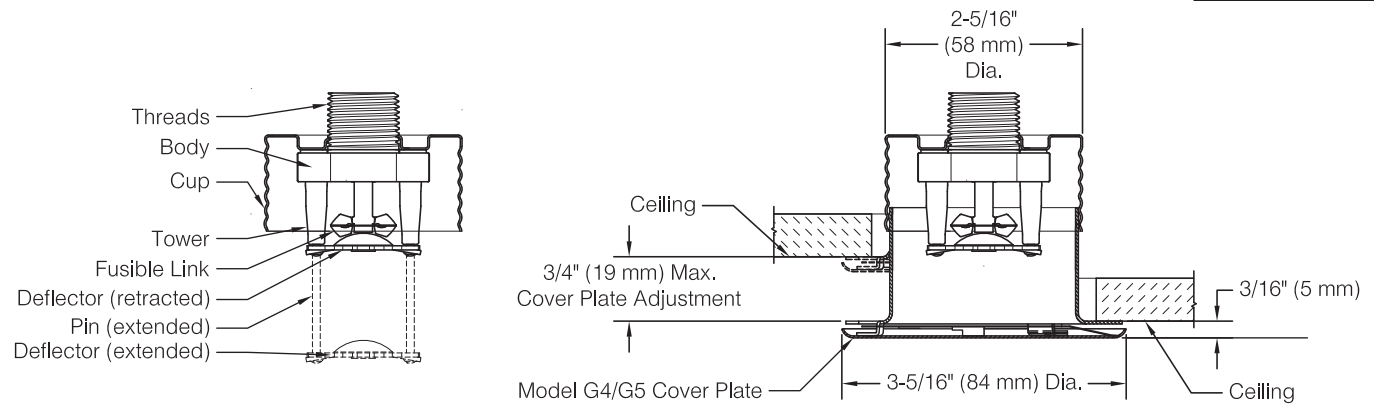
**Listings and Approvals**

cULus Listed (Light Hazard only)  
 FM Approved



Model G5-28 Sprinkler Components and Dimensions

Figure 1



Model G5-28 Sprinkler Sensitivity

Table B

Cover Plate Model	Listing or Approval Agency	
	cULus	FM
G5	QR	SR
G5 QR Gasket	QR	--
G5 SR Gasket	SR	SR

QR: Quick-response

SR: Standard-response

## Model G5-42 Standard Coverage, Concealed Pendent Sprinkler

SIN RA3413

### Technical Specifications

**Style:** Flat Concealed Pendent  
**Threads:** 1/2" NPT or ISO 7-1 R1/2  
**Nominal K-Factor:** 4.2 (60 metric)  
**Max. Working Pressure:** 175 psi (12 bar)

### Material Specifications

**Fusible Link:** Beryllium Nickel  
**Sprinkler Body:** Brass Alloy  
**Levers:** Bronze Alloy  
**Yoke:** Brass Alloy  
**Sealing washer:** Nickel with PTFE  
**Load Screw:** Bronze Alloy  
**Towers:** Copper Alloy  
**Pins:** Stainless Steel  
**Deflector:** Bronze Alloy  
**Cup:** Steel

### Sprinkler Temperature Ratings

165°F (74°C)  
 212°F (100°C)

### Sensitivity

(See Table C)

### Cover Plates

Model G5  
 Model G5 QR Gasket  
 Model G5 SR Gasket

### Cover Plate Finishes

(See Table I)

### Sprinkler Wrench

Model W3  
 Model FC

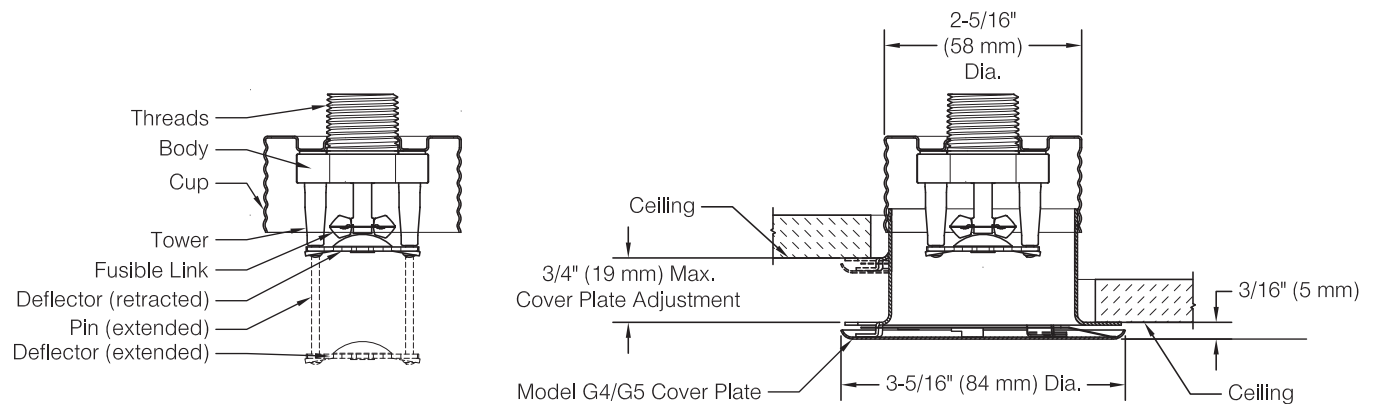
### Listings and Approvals

cULus Listed (Light Hazard only)



## Model G5-42 Sprinkler Components and Dimensions

Figure 2



### Model G5-42 Sensitivity

Table C

Cover Plate Model	Listing or Approval Agency	
	cULus	
G5	QR	
G5 QR Gasket	QR	
G5 SR Gasket	SR	

QR: Quick-response

SR: Standard-response

## Model G5-56 Standard Coverage, Concealed Pendent Sprinkler

SIN RA3415

### Technical Specifications

**Style:** Flat Concealed Pendent  
**Threads:** 1/2" NPT or ISO 7-1 R1/2  
**Nominal K-Factor:** 5.6 (80 metric)  
**Max. Working Pressure:**  
 175 psi (12 bar)  
 250 psi (17 bar) (cULus only)

### Material Specifications

**Fusible Link:** Beryllium Nickel  
**Sprinkler Body:** Brass Alloy  
**Levers:** Bronze Alloy  
**Yoke:** Brass Alloy  
**Sealing washer:** Nickel with PTFE  
**Load Screw:** Bronze Alloy  
**Towers:** Copper Alloy  
**Pins:** Stainless Steel  
**Deflector:** Bronze Alloy  
**Cup:** Steel

### Sprinkler Temperature Ratings

165°F (74°C)  
 212°F (100°C) (cULus, FM, LPCB, CE only)

### Sensitivity

(See Table D)

### Cover Plates

Model G5  
 Model G5 QR Gasket (cULus only)  
 Model G5 SR Gasket (cULus and FM only)

### Cover Plate Finishes

(See Table I)

### Sprinkler Wrench

Model W3  
 Model FC

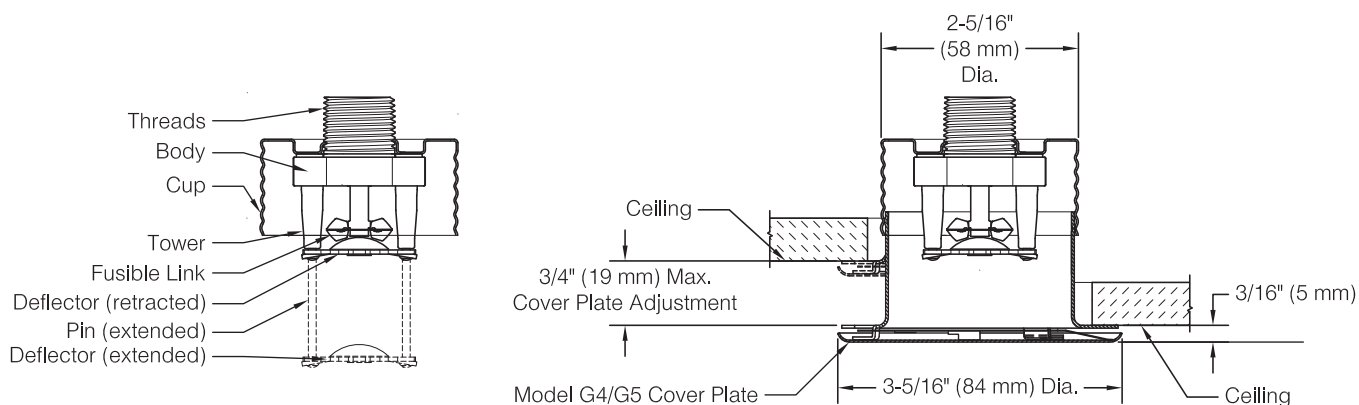
### Listings and Approvals

cULus Listed (Light & Ordinary Hazard only)  
 FM Approved  
 LPCB Approved  
 VdS Approved [165°F (74°C) only]  
 CE Listed (2831-CPR-S2062)



## Model G5-56 Sprinkler Components and Dimensions

Figure 3



## Model G5-56 Sensitivity

Table D

Cover Plate Model	Listing or Approval Agency		
	cULus	FM	LPCB, VdS, CE
G5	QR	SR	SR
G5 QR Gasket	QR	--	--
G5 SR Gasket	SR	SR	--

QR: Quick-response

SR: Standard-response

# Model G5-56 300 Standard Coverage, Concealed Pendent Sprinkler

SIN RA4014

## Technical Specifications

**Style:** Flat Concealed Pendent  
**Threads:** 1/2" NPT or ISO 7-1 R1/2  
**Nominal K-Factor:** 5.6 (80 metric)  
**Max. Working Pressure:** 300 psi (21 bar)

## Material Specifications

**Fusible Link:** Beryllium Nickel  
**Sprinkler Body:** Brass Alloy  
**Levers:** Bronze Alloy  
**Yoke:** Brass Alloy  
**Sealing washer:** Nickel with PTFE  
**Load Screw:** Bronze Alloy  
**Towers:** Copper Alloy  
**Pins:** Stainless Steel  
**Deflector:** Bronze Alloy  
**Cup:** Steel

## Sprinkler Temperature Ratings

165°F (74°C)  
212°F (100°C)

## Sensitivity

(See Table E)

## Cover Plates

Model G5  
Model G5 QR Gasket  
Model G5 SR Gasket

## Cover Plate Finishes

(See Table I)

## Sprinkler Wrench

Model W3  
Model FC

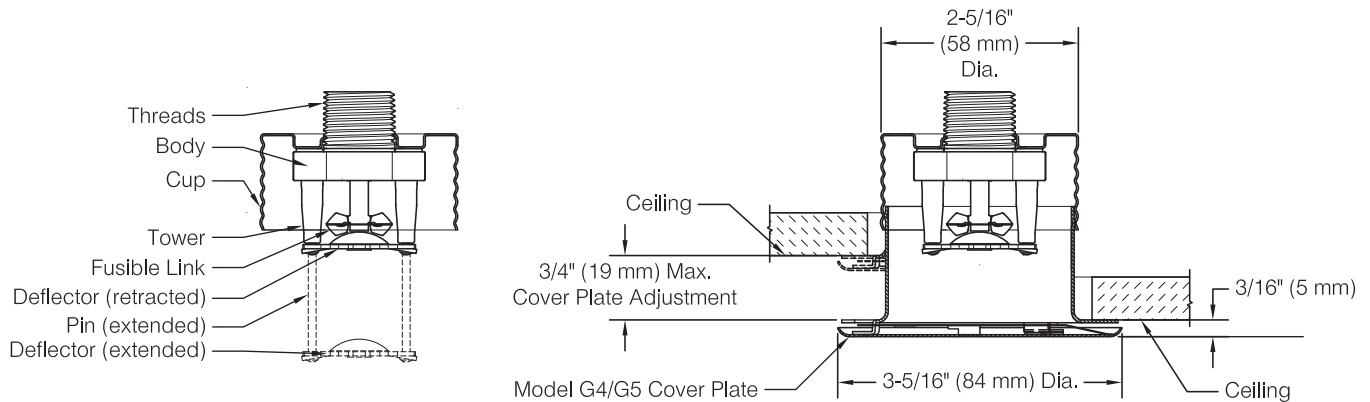
## Listings and Approvals

cULus Listed (Light & Ordinary Hazard only)



# Model G5-56 300 Sprinkler Components and Dimensions

Figure 4



# Model G5-56 300 Sensitivity

Table E

Cover Plate Model	Listing or Approval Agency	
	cULus	
G5	QR	
G5 QR Gasket	QR	
G5 SR Gasket	SR	

QR: Quick-response

SR: Standard-response

## Model G5-80 Standard Coverage, Concealed Pendent Sprinkler

SIN RA3412

### Technical Specifications

**Style:** Flat Concealed Pendent  
**Threads:** 3/4" NPT or ISO 7-1 R3/4  
**Nominal K-Factor:** 8.0 (115 metric)  
**Max. Working Pressure:** 175 psi (12 bar)

### Material Specifications

**Fusible Link:** Beryllium Nickel  
**Sprinkler Body:** Brass Alloy  
**Levers:** Bronze Alloy  
**Yoke:** Brass Alloy  
**Sealing washer:** Nickel with PTFE  
**Load Screw:** Bronze Alloy  
**Towers:** Copper Alloy  
**Pins:** Stainless Steel  
**Deflector:** Bronze Alloy  
**Cup:** Steel

### Sprinkler Temperature Ratings

165°F (74°C)  
 212°F (100°C)

### Sensitivity

(See Table F)

### Cover Plates

Model G5  
 Model G5 QR Gasket  
 Model G5 SR Gasket

### Cover Plate Finishes

(See Table I)

### Sprinkler Wrench

Model W3  
 Model FC

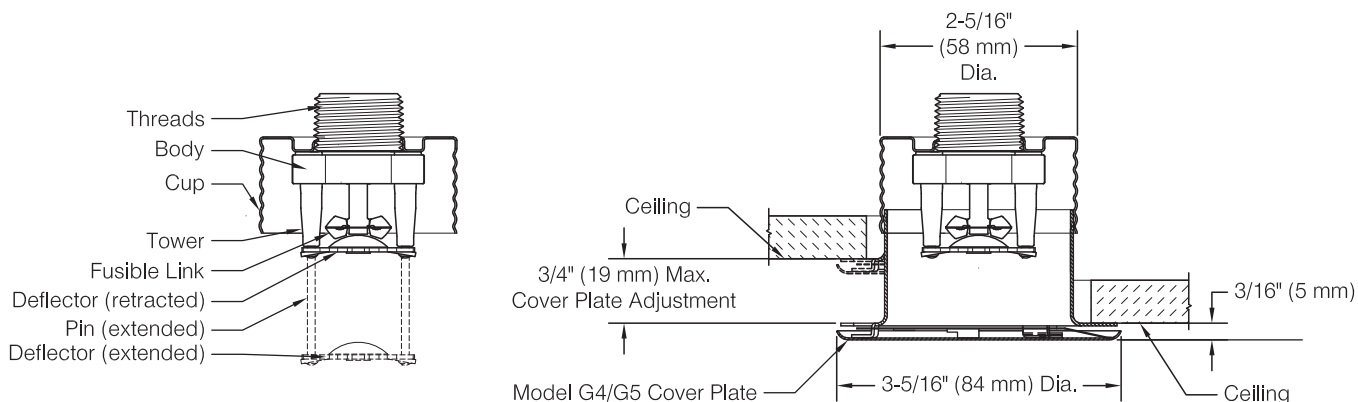
### Listings and Approvals

cULus Listed (Light & Ordinary Hazard only)



## Model G5-80 Sprinkler Components and Dimensions

Figure 5



## Model G5-80 Sensitivity

Table F

Cover Plate Model	Listing or Approval Agency
	cULus
G5	QR
G5 QR Gasket	QR
G5 SR Gasket	SR

QR: Quick-response

SR: Standard-response

# Model G5-80F Standard Coverage, Concealed Pendent Sprinkler

SIN RA3417

## Technical Specifications

**Style:** Flat Concealed Pendent  
**Threads:** 3/4" NPT or ISO 7-1 R3/4  
**Nominal K-Factor:** 8.0 (115 metric)  
**Max. Working Pressure:** 175 psi (12 bar)

## Material Specifications

**Fusible Link:** Beryllium Nickel  
**Sprinkler Body:** Brass Alloy  
**Levers:** Bronze Alloy  
**Yoke:** Brass Alloy  
**Sealing washer:** Nickel with PTFE  
**Load Screw:** Bronze Alloy  
**Towers:** Copper Alloy  
**Pins:** Stainless Steel  
**Deflector:** Stainless Steel  
**Cup:** Steel

## Sprinkler Temperature Ratings

165°F (74°C)  
212°F (100°C)

## Sensitivity

Standard Response

## Cover Plates

Model G5  
Model G5 SR Gasket

## Cover Plate Finishes

(See Table I)

## Sprinkler Wrench

Model W3  
Model FC

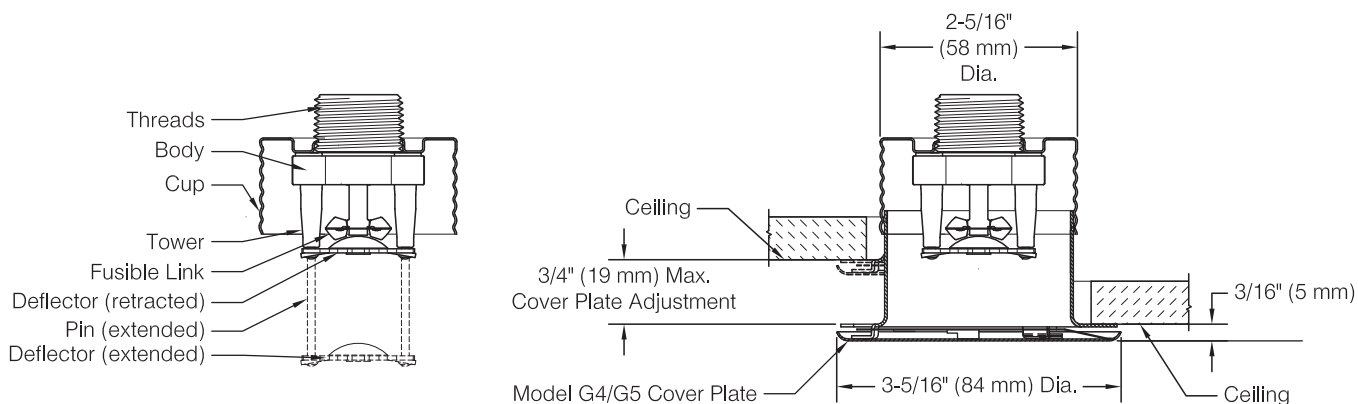
## Listings and Approvals

FM Approved



# Model G5-80F Sprinkler Components and Dimensions

Figure 6



# Model G5-80F Sensitivity

Table G

Cover Plate Model	Listing or Approval Agency	
	FM	
G5	SR	
G5SR Gasket	SR	

SR: Standard-response



**Installation Dimensions and Cover Plate Information**

						Table H
Cover Plate Model	Cover Plate Diameter Inch (mm)	Recommended Hole Diameter in Ceiling Inch (mm)	Cover Plate Adjustment Inch (mm)	Min. to Max. Face of Fitting to Ceiling <sup>(1)</sup> Inch (mm)	Min. to Max. Dropped Deflector Distance below Ceiling Inch (mm)	Cover Plate Temperature Rating °F (°C)
G5	3-5/16 (84)	2-5/8 (67)	3/4 (19)	1-1/2 to 2-1/4 (38 to 57)	1/4 to 1 (6 to 25)	135°F <sup>(3)</sup> (57°C)
G5 QR Gasket <sup>(2)</sup>	3-11/16 (94)					or
G5 SR Gasket <sup>(2)</sup>	4 (101 mm)					165°F <sup>(4)</sup> (74°C)

**Notes:**

1. Face of fitting to ceiling dimensions are based on nominal thread make up. Verify dimensions based on fitting and thread sealing method prior to installation. A 1/2" x 1/2" brass nipple extension (Reliable P/N 6999991900) is available to assist with replacement of Reliable Model G4A sprinklers.
2. Model G5 QR Gasket and Model G5 SR Gasket cover plates are sold as assembled units including both the cover plate and gasket. Model G5 QR Gasket and Model G5 SR Gasket cover plates and gaskets are not interchangeable.
3. For use with 165°F (74°C) temperature rated sprinklers where the Maximum Ceiling Temperature does not exceed 100°F (38°C).
4. For use with 212°F (100°C) temperature rated sprinklers where the Maximum Ceiling Temperature does not exceed 150°F (66°C).

**Cover Plate Finishes<sup>(1)(2)</sup>**
**Table I**

Standard Finishes	Special Application Finishes
White Paint Chrome <sup>(4)</sup>	Off-White Paint Black Paint Custom Color Paint (Specify) <sup>(3)</sup> Raw Brass (Lacquered) Bright Brass <sup>(4)</sup> Finished Bronze <sup>(4)</sup> Black Plated <sup>(4)</sup> Satin Chrome <sup>(4)</sup> Stainless Steel Clad <sup>(5)</sup>

**Notes:**

1. Paint or any other coating applied over the factory finish will void all approvals and warranties.
2. Cover plates do not carry corrosion resistant listings or approvals.
3. Custom color paint is semi-gloss unless specified otherwise.
4. Not listed for use with QR sealing gasket.
5. Stainless steel clad cover plates are Type 316 Stainless Steel on the finished side and C102 Copper Alloy on the back side.

## Application

Model G5 series sprinklers are standard coverage, flat plate concealed pendent sprinklers. The sprinklers are intended for use in accordance with NFPA 13 and FM Global Property Loss Prevention Data Sheets, as well as the requirements of the applicable approval agencies.

Model G5 series sprinklers are available as either Quick-response (QR) or Standard-response (SR) depending on the approval agency and cover plate selected.

Model G5 series sprinklers use Model G5 flat cover plates. Model G5 QR Gasket and G5 SR Gasket cover plates are available to limit air and dust movement through the ceiling.

## Listing & Approval Agencies

Individual Model G5 series sprinkler may be listed or approved by the following agencies:

- Underwriters Laboratories, Inc. and UL Canada (cULus)  
Listing Category: Sprinklers, Automatic and Open  
Guide Number: VNIV
- FM Approvals (FM)
- Loss Prevention Certification Board (LPCB)
- VdS Schadenverhütung GmbH (VdS)
- EC-Certificate of Conformity 0832-CPD-2062 (CE)

See Table A and the individual sprinkler data sheets in this Bulletin for listings and approvals applicable to each sprinkler.

## Installation

Model G5 series sprinklers are intended to be installed in accordance with NFPA 13, FM Global Property Loss Prevention Data Sheets, and the requirements of applicable authorities having jurisdiction. Model G5 series sprinklers must not be installed in ceilings with positive pressure in the space above. Ensure that the 4 slots in the cup are open and unobstructed following installation.

Model G5 series sprinklers are shipped with a wrench-able protective cap that should remain on the sprinkler until the sprinkler system is placed in service following construction.

Model G5 series sprinklers can be installed without removing the wrench-able protective cap using the Model W3 wrench. Alternatively, Model G5 series sprinklers can be installed using the Model FC wrench by temporarily removing the protective cap during installation of the sprinkler. The use of any other wrench to install Model G5 series sprinklers is not permitted and may damage the sprinkler.



## Wrench



**Model FC**

For use with Model G5 Series sprinklers without wrench-able cap installed



**Model W3**

For use with Model G5 Series sprinklers with wrench-able cap installed



Fully insert the Model W3 wrench over the cap until it reaches the bottom of the cup, or the Model FC wrench over the sprinkler until the wrench engages the body. Do not wrench any other part of the sprinkler/cup assembly. The Model W3 and FC wrenches are designed to be turned with a standard 1/2" square drive. Tighten the sprinkler into the fitting after applying a PTFE based thread sealant to the sprinkler's threads. Recommended installation torque is specified in Table J.

Replace any sprinkler or cover plate which has been painted (other than factory applied). Properly installed Model G5 cover plates will have an air gap that is required for proper operation, do not seal the gap or paint the cover plates. Model G5 series sprinklers have holes in the cup that must remain unobstructed.

Replace any sprinkler which has been damaged. A stock of spare sprinklers should be maintained to allow quick re-placement of damaged or operated sprinklers. Failure to properly maintain sprinklers may result in inadvertent operation or non-operation during a fire event.

## Installation Torque

**Table J**

Sprinkler Threads	Recommended Installation Torque (min. – max.)	
	ft.lb	N.m
1/2" NPT or ISO7-1R1/2	8-18	11-24
3/4" NPT or ISO7-1R3/4	14-20	19-27

Do not exceed the maximum recommended torque. Exceeding the maximum recommended torque may cause leakage or impairment of the sprinkler. Use care when inserting or removing the wrench from the sprinkler to avoid damage to the sprinkler.

Install the cover plate by hand, pushing and then turning the cover in the clockwise direction until it is tight against the ceiling. For Model G5 QR Gasket and Model G5 SR Gasket cover plates, the gasket should be attached to the flange of the cover plate skirt only. Do not glue the gasket in place or allow the gasket to overlap both the cover plate and the flange of the skirt.

## Maintenance

Reliable Model G5 series sprinkler should be inspected and the sprinkler system maintained in accordance with NFPA 25, as well as the requirements of any Authorities Having Jurisdiction.

Prior to installation, sprinklers should remain in the original cartons and packaging until used. This will minimize the potential for damage to sprinklers that could cause improper operation or non-operation.

Do not clean sprinklers with soap and water, ammonia liquid or any other cleaning fluids. Remove dust by gentle vacuuming without touching the sprinkler.

## Guarantee

For the Reliable Automatic Sprinkler Co., Inc. guarantee, terms, and conditions, visit [www.reliablesprinkler.com](http://www.reliablesprinkler.com).

## Patents

Model G5 series sprinklers may be covered by one or more of the following patents:

U.S. Patent 6,554,077, U.S. Patent 7,275,603, U.S. Patent 8,776,903, U.S. Patent 9,248,327

## Ordering Information

Specify the following when ordering.

### Sprinkler

- Model [G5-28] [G5-42] [G5-56] [G5-56 300] [G5-80] [G5-80F]
- Temperature Rating [165°F (74°C)] [212°F (100°C)]
- Threads [NPT or ISO 7-1]

### Cover Plate

- Model [G5, G5 QR Gasket, G5 SR Gasket]
- Finish (See Table I)

### Sprinkler Wrench

- Model W3
- Model FC

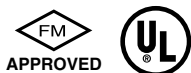
## STANDARD TALL SERIES HOSE



**STANDARD TALL HOSE:** available in 24", 36", 48", 60", 72" hose lengths. Rated working pressure 175psi, Straight model, Standard 1" I.D.



**STANDARD ELBOW TALL HOSE:** 24", 36", 48", 60", 72" hose lengths. Rated working pressure 175psi, Elbow model.



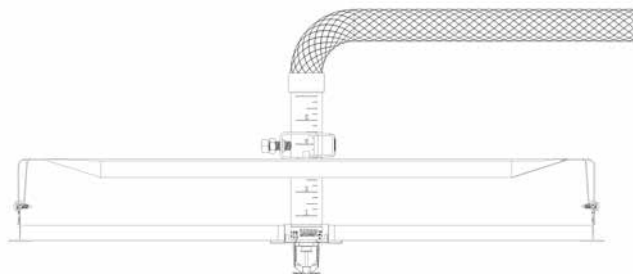
The benefits of installing FlexHead Commercial Connections include:

- Uniform bids / construction schedules
- Reduced man power and labor costs
- Retrofit existing buildings within confined spaces quickly and easily
- Increased efficiency
- Quick and easy installation
- Simple friction loss / water pressure calculations
- Relocate and reconfigure without draining and disassembling
- Flexible design provides versatility for changes in floor plan or occupancy
- Reduced service calls
- No call-backs due to quality manufacturing
- Rapid construction schedules allowing fast-track building occupancy

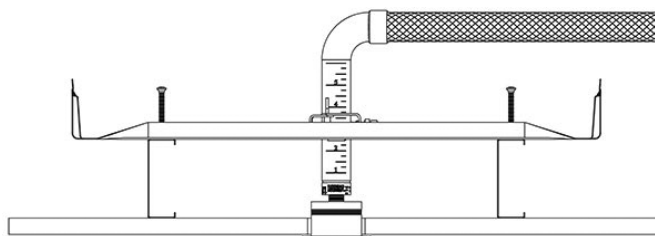
Unlike traditional hard-piped fire protection systems, FlexHead® sprinkler connections allow engineers, architects, contractors and building owners a degree of versatility previously unavailable, featuring:

- Industrial grade material
- Acceptable for use in a return-air plenum
- Perfect center-of-tile and aesthetic uniformity
- Approved for use with medium and heavy load grids (ASTM C635, 636)
- 100% leak-tested connections
- All welded, no o-rings
- Adjustable height and sprinkler alignment
- Proven technology
- Ceiling system compatibility
- Compatible with FM / UL sprinklers
- Meets 2013 NFPA 13 guidelines
- UL Approved for installation in dry wall ceiling grids

FLEXHEAD SUSPENDED CEILING DETAIL

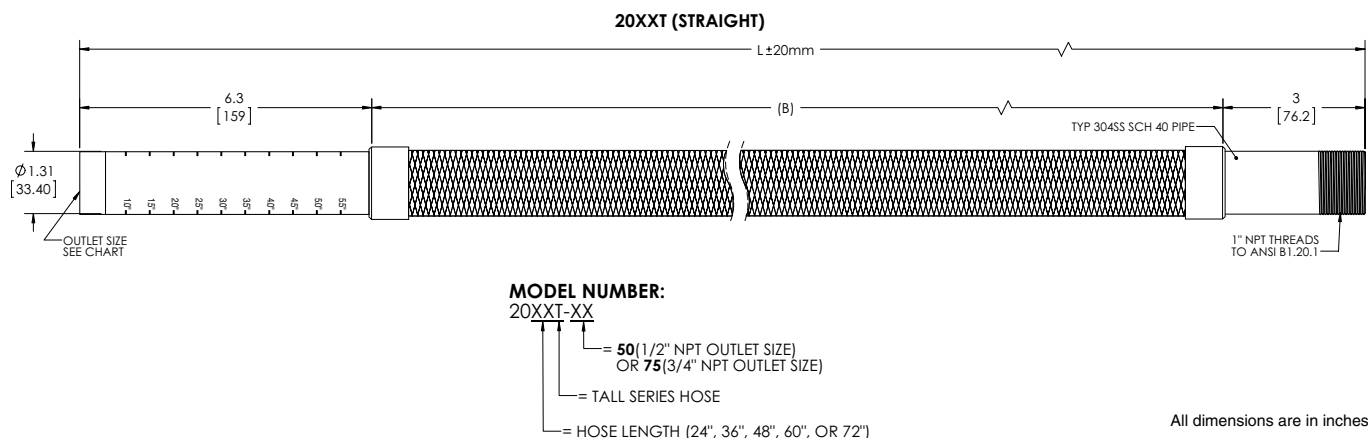


FLEXHEAD SHEETROCK CEILING DETAIL



PROJECT INFORMATION		APPROVAL STAMP	
Project:		<input type="checkbox"/> Approved	
Address:		<input type="checkbox"/> Approved as noted	
Contractor:		<input type="checkbox"/> Not approved	
Engineer:		Remarks:	
Submittal Date:			
Notes 1:			
Notes 2:			

## STANDARD TALL SERIES HOSE



### FLEXHEAD STANDARD TALL HOSE SERIES – 1" INTERNAL DIAMETER (I.D.) HOSE SERIES

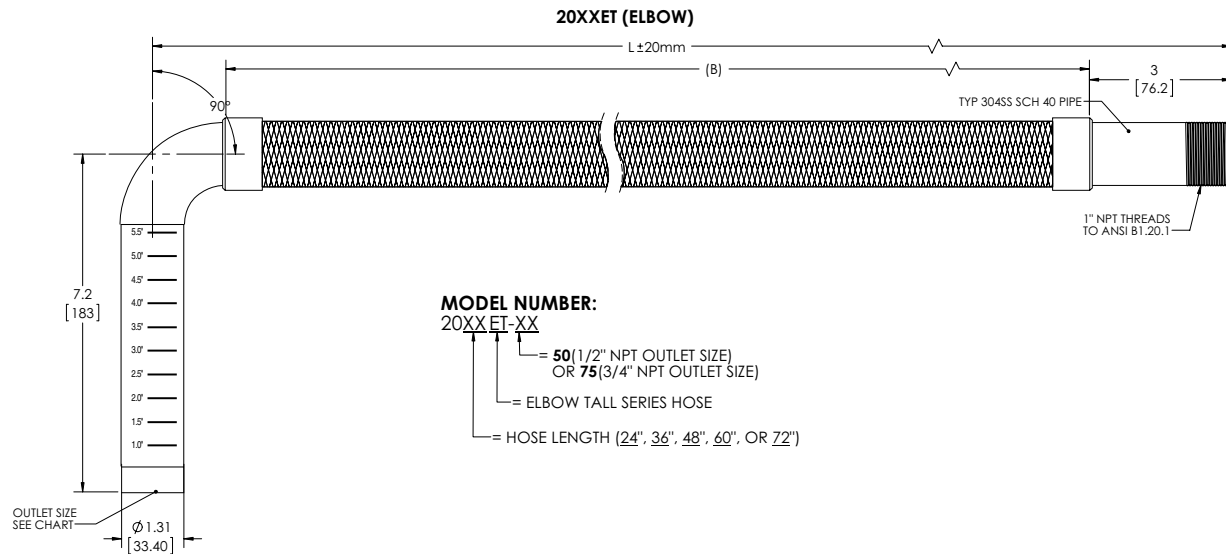
Model Number	Outlet Orifice Size	Hose Assembly Length (L)	Braid Length (B)	Minimum Bend Radius		Max. Number of 90° Bends		Equivalent Length of 1 in. Schedule 40 Pipe (Ft.)						Max. Rated Working Pressure	
				FM	UL	FM	UL	UL	FM					FM	UL
									5.6 k-Factor	8.0 k-Factor	11.2 k-Factor	14.0 k-Factor	16.8 k-Factor		
	In./cm.	In./mm.	In./mm.	In./mm.	In./mm.	In./mm.	In./mm.	Ft./m.	Ft./m.	Ft./m.	Ft./m.	Ft./m.	Ft./m.	PSI/Kpa	PSI/Kpa
2024T-50	1/2 1.27	24 610	14.7 373.4	8 200	3 76.2	1	3	11 3.4	18.4 5.6	7.7 2.3	7.6 2.3	—	—	175 1205	175 1205
2036T-50		36 914	26.7 678.2			2	3	16 4.9	26.6 8.1	11.5 3.5	11.5 3.5	—	—		
2048T-50		48 1219	38.7 983.0			3	4	24 7.3	30.3 9.2	15.3 4.6	15.3 4.7	—	—		
2060T-50		60 1524	50.7 1287.8			4	4	29 8.8	35.8 10.9	19.1 5.8	19.3 5.8	—	—		
2072T-50		72 1828	62.7 1592.6			4	4	35 10.7	45.6 13.9	23 7	23.2 7	—	—		
2024T-75	3/4 1.90	24 610	14.7 373.4	8 200	3 76.2	1	3	12 3.7	N/A			14.7 4.5	7.1 2.1	175 1205	175 1205
2036T-75		36 914	26.7 678.2			2	3	18 5.5	N/A	21.5 6.5	21.6 6.6	21.8 6.6	10.9 3.3		
2048T-75		48 1219	38.7 983.0			3	4	23 7.0	N/A	30.5 9.3	30.6 9.3	29 8.8	14.8 4.5		
2060T-75		60 1524	50.7 1287.8			4	4	29 8.8	N/A	39.5 12	39.6 12	36.1 11	18.7 5.6		
2072T-75		72 1828	62.7 1592.6			4	4	32 9.8	N/A	48.5 14.7	48.8 14.9	43.2 13.1	22.6 6.8		

Model Numbers: The "T" designates Tall Series Hose. The "50" designates 1/2" Outlet Hose Series. The "75" designates 3/4" Outlet Hose Series.

Equivalent Lengths are shown with maximum number of 90° bends at the minimum bend radius per agency. 2- 45° or 3-30° bends equal 1-90° bend. Different values were obtained by FM and UL due to the difference in minimum bend radius, testing protocol and calculation methods. Please see individual standards for more information relative to Friction Loss (equivalent length of pipe).

See listing(s) approval agency for the latest approval details.

## STANDARD TALL SERIES HOSE



### FLEXHEAD ELBOW TALL HOSE SERIES – 1" INTERNAL DIAMETER (I.D.) HOSE SERIES

Model Number	Outlet Orifice Size	Hose Assembly Length (L)	Braid Length (B)	Minimum Bend Radius		Max. Number of 90° Bends		Equivalent Length of 1 in. Schedule 40 Pipe (Ft.)						Max. Rated Working Pressure	
				FM	UL	FM	UL	UL	FM					FM	UL
									5.6 k-Factor	8.0 k-Factor	11.2 k-Factor	14.0 k-Factor	16.8 k-Factor		
	In./cm.	In./mm.	In./mm.	In./mm.	In./mm.	In./mm.	In./mm.	Ft./m.	Ft./m.	Ft./m.	Ft./m.	Ft./m.	Ft./m.	PSI/Kpa	PSI/Kpa
2024ET-50	1/2 1.27	24	19.5	8	3	1	3	19	26.4	6.8	7.4	—	—	175 1205	175 1205
		610	495.3					5.8	8.0	2	2.2	—	—		
2036ET-50		36	31.5					23	30.1	11.8	12.5	—	—		
		914	800.1					7.0	9.1	3.6	3.8	—	—		
2048ET-50		48	43.5					27	33.8	16.9	17.6	—	—		
		1219	1104.9					8.2	10.3	5.1	5.3	—	—		
2060ET-50	3/4 1.90	60	55.5	8	3	4	4	32	37.5	21.9	22.7	—	—	175 1205	175 1205
		1524	1409.7					9.8	11.4	6.6	6.9	—	—		
2072ET-50		72	67.5					35	41.2	27	27.8	—	—		
		1828	1714.5					10.7	12.5	8.2	8.4	—	—		
2024ET-75		24	19.5			1	3	18	N/A	—	—	14.7	8.2	175 1205	175 1205
		610	495.3					5.5	—	—	—	4.5	2.5		
2036ET-75		36	31.5					23	N/A	25.2	26	21.8	13		
		914	800.1					7.0	—	7.7	7.9	6.6	3.9		
2048ET-75		48	43.5					23	N/A	32.9	33	29	17.8		
		1219	1104.9					7.0	—	10	10	8.8	5.4		
2060ET-75	3/4 1.90	60	55.5	8	3	4	4	29	N/A	40.6	40	36.1	22.6	175 1205	175 1205
		1524	1409.7					8.8	—	12.3	12.1	11	6.8		
2072ET-75		72	67.5					32	N/A	48.5	47	43.2	27.5		
		1828	1714.5					9.8	—	14.7	14.3	13.1	8.3		

Model Numbers: The "ET" designates Elbow Tall Series Hose. The "50" designates 1/2" Outlet Hose Series. The "75" designates 3/4" Outlet Hose Series.

Equivalent Lengths are shown with maximum number of 90° bends at the minimum bend radius per agency. 2- 45° or 3-30° bends equal 1-90° bend. Different values were obtained by FM and UL due to the difference in minimum bend radius, testing protocol and calculation methods. Please see individual standards for more information relative to Friction Loss (equivalent length of pipe).

See listing(s) approval agency for the latest approval details.

## INSTALLATION INSTRUCTIONS

### MPO24BKT2 Multi-Position Open Hub Bracket (MPO) Installation of FlexHead Commercial Ceiling Flexible Sprinkler Drop System

Recommend the use of proper PPE for installation. MPO24BKT2 is approved for use with the standard FlexHead® Flexible Sprinkler Hose in accordance to NFPA 13, 13D, & 13R for use in wet and dry sprinkler system. The Standard Flexible sprinkler hoses are UL approved for Limited flexibility and are intended for direct sprinkler connection.

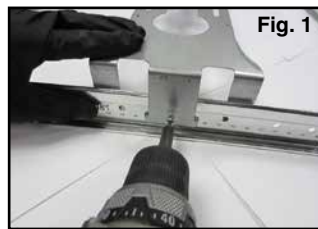
The MPO24BKT2 is pre-assembled at center tile position. (See below for additional installation configurations)



### 1 T Bar Ceiling Grid Installation

The MPO bracket is designed for use on ceiling grids conforming to ASTM C 635\*.

Locate the center of the ceiling tile marking, align the offset screw with that marking for true center of tile installation. Insert one bracket leg at a time, applying a downward pressure on the bracket leg and T-Bar. Place the second leg on the T-Bar and repeat process. (Fig. 1)



### 2 FlexHead Flexible Hose Installation

Apply Teflon® tape or pipe sealant to the 1" NPT thread. Install into branch outlet. Any direction is acceptable, ensure the hose is allowed at least one bend per installation to allow for seismic movement. (See Friction Loss Chart on page 8 for details.)



*Do not wrench on braided hose*

Tighten hose using the pipe drop section, never apply a wrench to the braided hose for installation. (Fig. 2)

### 3 MPO Bracket Installation

Maneuver the flexible sprinkler drop from the branch to the MPO bracket. Review that the hose length, number of bends, and bend radius are applicable for the installation per NFPA guidelines. (See corresponding hose submittal for installation information.)

The MPO bracket has an open hub for ease of installation. Open the hinge apparatus by turning the locking shaft ¼ turn. Slide the flexible hose drop into the hub. Ensure the drop is vertical, and the SS Flexible® hose is not applying a substantial moment on the bracket causing sprinkler misalignment. Latch the hinge door closed and adjust the sprinkler drop for desired ceiling height. Tighten the set screw till hand tight plus 1" turn, (100 in-lbs). Install desired sprinkler head, per the manufacturer's installation instructions.



### Installation Configurations



24" Tile – 24/4 - Quarter Mark Position



14 1/2" Wood Stud - Center Position ♦

### Installation Complete



U.S and International Patent Pending: #6,123,154, #6,119,784, #6,752,218, #7,032,680, #6,488,097

20XXHE, 20XXSF, 20XXE & 20XXI, 20XXET with MPO24BKT2 Bracket has not been evaluated by UL.

\*Intended for use on ASTM C 635 intermediate or heavy duty ceilings systems installed in accordance to ASTM C 636.

•FM Approved, Installation has not been evaluated by UL.



## INSTALLATION INSTRUCTIONS

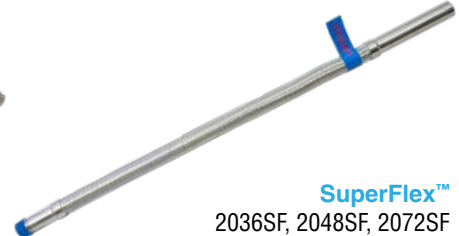
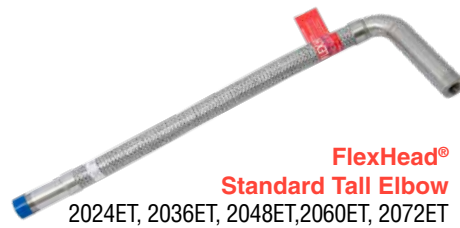
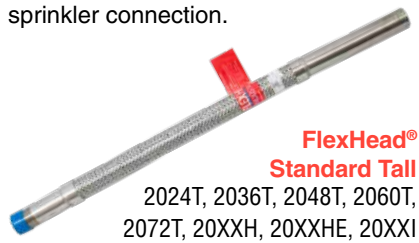
### ADOXXBKT3 Adjustable Open Hub Bracket (ADO) Installation of FlexHead Commercial Ceiling Flexible Sprinkler Drop System

Recommend the use of proper PPE for installation. ADOXX-BKT3 is approved for use with the standard FlexHead® and SuperFlex™ Flexible Sprinkler Hose in accordance to NFPA 13, 13D, & 13R for use in wet and dry sprinkler system. The Standard & SuperFlex™ Flexible sprinkler hoses are UL approved for limited flexibility and are intended for direct sprinkler connection.

The ADOXXBKT3 is pre-assembled at center tile position. (See below for additional installation configurations)



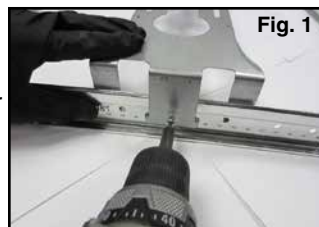
ADO16BKT3 & ADO24BKT3 UL Listed and FM Approved.  
ADO30BKT3 & ADO48BKT3 FM Approved.



### 1 T Bar Ceiling Grid Installation

The ADO bracket is designed for use on ceiling grids conforming to ASTM C 635\*.

Locate the center of the ceiling tile marking, align the offset screw with that marking for true center of tile installation. Insert one bracket leg at a time, applying a downward pressure on the bracket leg and T-Bar. Place the second leg on the T-Bar and repeat process. (Fig. 1)



### 2 FlexHead Flexible Hose Installation

**A.** For threaded fitting branch connection: Apply Teflon® tape or pipe sealant to the 1" NPT thread. Install into branch outlet. Tighten the hose using the pipe section, never apply a wrench to the braided hose when installing.

**B.** For groove connection follow the grooved coupling manufacturer's installation instructions.

**C.** For SLT connection follow Gruvlok® installation instructions, "Fig 7074SLT SlideLOK® Ready for Installation Cap & Fitting Instructions".

The FlexHead connection can be installed in any direction from the branch. Ensure the hose is allowed at least one bend per installation to allow for seismic movement. (See fiction Loss Chart on Page 3 for details)



*Do not wrench on  
braided hose*

### 3 ADO Bracket Installation

Maneuver the flexible sprinkler drop from the branch to the ADO bracket. Review that the hose length, number of bends, and bend radius are applicable for the installation per NFPA guidelines. (See corresponding hose submittal for installation information.)

The ADO bracket has an open hub for ease of installation. Open the hinge apparatus by turning the locking shaft ¼ turn. Slide the flexible hose drop into the hub. Ensure the drop is vertical, and the SS Flexible® hose is not applying a substantial moment on the bracket causing sprinkler misalignment. Latch the hinge door closed and adjust the sprinkler drop for desired ceiling height. Tighten the set screw till hand tight plus ¾" turn, (130 in-lbs). (Fig. 3a and 3b)

Install desired sprinkler head, per the manufacturer's installation instructions.



### Installation Configurations



24" Tile – 24/4 - Quarter Mark Position



14½" Wood Stud - Center Position♦

### Installation Complete



U.S and International Patent Pending: #6,123,154, #6,119,784, #6,752,218, #7,032,680, #6,488,097  
20XXT, 220XXET, 20XXH, 20XXHE, 20XXI, with ADOXXBKT3 Bracket has not been evaluated by UL.

\*Intended for use on ASTM C 635 intermediate or heavy duty ceilings systems installed in accordance to ASTM C 636.

•FM Approved, Installation has not been evaluated by UL.

## INSTALLATION INSTRUCTIONS

### MPT24BKT1 Multi-Position Tall Bracket (MPT)

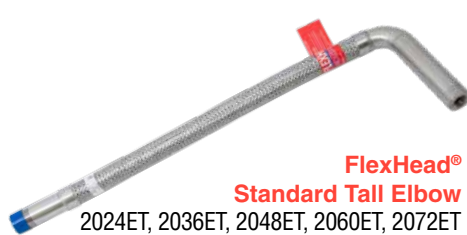
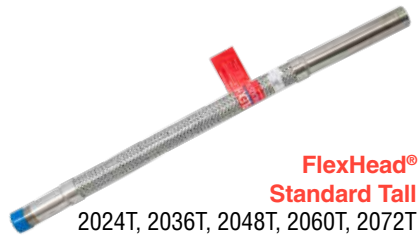
#### Installation of FlexHead Commercial Ceiling Flexible Sprinkler Drop System

Recommend the use of proper PPE for installation. MPT-24-BKT1 is approved for use with the standard FlexHead® and SuperFlex™ Flexible Sprinkler Hose in accordance to NFPA 13, 13D, & 13R for use in wet and dry sprinkler system. The Standard & SuperFlex™ Flexible sprinkler hoses are UL

approved for limited flexibility and are intended for direct sprinkler connection.



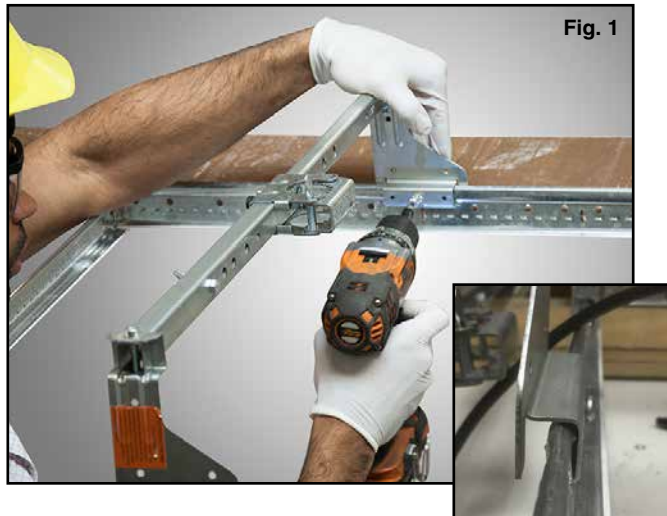
The MPT bracket is set for 24" center of tile installation. (See back side for additional installation configurations)



## 1 T Bar Ceiling Grid Installation

The MPT bracket is designed for use on ceiling grids conforming to ASTM C 635\*.

Locate the center of the ceiling tile marking, align the offset screw with that marking for true center of tile installation. Insert one bracket leg at a time, applying a downward pressure on the bracket leg and T-Bar. Screw the self tapping screw using a #2 square head driver. Place the second leg on the T-Bar and repeat process. (Fig. 1)



## 2 FlexHead Flexible Hose Installation

**A.** For threaded fitting branch connection: Apply Teflon® tape or pipe sealant to the 1" NPT thread. Install into branch outlet. Tighten the hose using the pipe section, never apply a wrench to the braided hose when installing.

**B.** For groove connection follow the grooved coupling manufacturer's installation instructions.

**C.** For SLT connection follow Gruvlok® installation instructions, "Fig 7074SLT SlideLOK® Ready for Installation Cap & Fitting Instructions".

The FlexHead connection can be installed in any direction from the branch. Ensure the hose is allowed at least one bend per installation to allow for seismic movement. (See fiction Loss Chart on Page 3 for details)



*Do not wrench on braided hose*

\*Intended for use on ASTM C 635 intermediate or heavy duty ceilings systems installed in accordance to ASTM C 636.



**3 Secure the Flexhead Sprinkler Drop to MPT Bracket** – Maneuver the flexible sprinkler drop from the branch to the MPT bracket. Review that the hose length, number of bends, and bend radius are applicable for the installation per NFPA guidelines. (See corresponding hose submittal for installation information.)

The MPT bracket has an open hub for ease of installation. Open the hinge apparatus by turning the locking shaft ¼ turn. Slide the flexible hose drop into the hub. Ensure the drop is vertical, and the SS Flexible® hose is not applying a substantial moment on the bracket causing sprinkler misalignment. Latch the hinge door close and adjust the sprinkler drop for desired ceiling height. Tightening the set screw till hand tight plus two full revolutions, (130 in-lbs). (Fig. 3a and 3b)

Install desired sprinkler head, per the manufacturer's installation instructions.



**4 Ceiling Tile Installation** – The flexible sprinkler drop system with MPT Bracket is able to be installed prior to the ceiling tile installation, preventing the need for sprinkler contractor tile adjustment.

For ease of tile installation, cut the largest sprinkler hole recommended by the manufacturer. The largest hole that is still covered by the sprinkler escutcheon allows for an easier install.

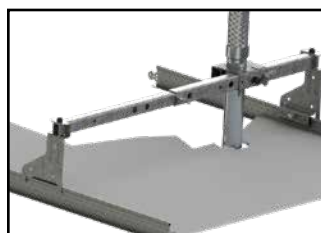
Angle the tile at 45 degrees and push the tile through the hole and up above the ceiling T-bar, maneuver the tile and allow it to drop in the proper location. (Fig. 4)



**Installation Complete**



## Installation Configurations



24" Tile – 24/4  
Quarter Mark Position



16" Tile – 16/2  
Center Position



16" Metal Stud  
Center Position♦



14½" Wood Stud  
Center Position♦

U.S. and International Patent Pending: #6,123,154, #6,119,784, #6,752,218, #7,032,680, #6,488,097  
20XXET with MPT-24BKT1 Bracket has not been evaluated by UL.  
♦FM Approved, Installation has not been evaluated by UL.

## FRICITION LOSS DATA & SPECIFICATIONS

Model Number	Outlet Orifice Size	Hose Assembly Length	Minimum Bend Radius		Max. Number of 90° Bends		Equivalent Length of 1 in. Schedule 40 Pipe (Ft.)								Max. Rated Working Pressure	
			FM	UL	UL	FM	UL	FM						FM	UL	
								5.6 k-Factor	8.0 k-Factor	11.2 k-Factor	14.0 k-Factor	16.8 k-Factor	22.4 k-Factor			
	In./cm.	In./mm.	In./mm.	In./mm.	In./mm.	In./mm.	Ft./m.	Ft./m.	Ft./m.	Ft./m.	Ft./m.	Ft./m.	Ft./m.	PSI/Kpa	PSI/Kpa	
SuperFlex 1" Internal Diameter (I.D.) Hose Series																
2036SF-50	½ 1.27	36 914	7 178	2 50.8	5	2	30 9.1	16.2 4.9	16.9 5.1	11.5 3.5	—	—	—			
2048SF-50		48 1219			8	3	47 14.3	28.7 8.7	29.3 8.9	15.4 4.7	—	—	—			
2072SF-50		72 1828			12	4	71 21.6	53.9 16.4	54.3 16.5	23.2 7	—	—	—			
2036SF-75	¾ 1.90	36 914	7 178	2 50.8	5	2	29 8.8	—	21.5 6.5	21.6 6.5	21.8 6.6	22 6.7	—			
2048SF-75		48 1219			8	3	44 13.4	—	30.5 9.2	30.6 9.3	31.1 9.4	30.8 9.3	—			
2072SF-75		72 1828			12	4	70 21.3	—	48.5 14.7	48.8 14.8	49.9 15.2	48.6 14.8	—			
SuperFlex Elbow 1" Internal Diameter (I.D.) Hose Series																
2036ESF-50	½ 1.27	36 914	7 178	N/A	—	2	—	25.8 7.8	26.1 7.9	12.5 3.8	—	—	—	175 1205	175 1205	
2048ESF-50		48 1219			—	3	—	36.1 11	36.3 11	17.6 5.3	—	—	—			
2072ESF-50		72 1828			—	4	—	57.3 17.4	56.9 17.3	27.8 8.4	—	—	—			
2036ESF-75	¾ 1.90	36 914	7 178	N/A	—	2	—	—	25.2 7.6	26 7.9	25.9 7.9	25.7 7.8	—	175 1205	175 1205	
2048ESF-75		48 1219			—	3	—	—	32.9 10	33 10	33 10	33 10	—			
2072ESF-75		72 1828			—	4	—	—	48.5 14.8	47 14.3	47.3 14.4	47.6 14.5	—			
Flexhead Standard Tall 1" Internal Diameter (I.D.) Hose Series																
2024T-50	½ 1.27	24 610	8 200	3 76.2	3	1	11 3.4	18.4 5.6	7.7 2.3	7.6 2.3	—	—	—	175 1205	175 1205	
2036T-50		36 914			3	2	16 4.9	26.6 8.1	11.5 3.5	11.5 3.5	—	—	—			
2048T-50		48 1219			4	3	24 7.3	30.3 9.2	15.3 4.6	15.4 4.7	—	—	—			
2060T-50		60 1524			4	4	29 8.8	35.8 10.9	19.1 5.8	19.3 5.8	—	—	—			
2072T-50		72 1828			4	4	35 10.7	45.6 13.9	23.0 7	23.2 7	—	—	—			
2024T-75	¾ 1.90	24 610	8 200	3 76.2	3	1	12 3.7	—	7.3 2.2	5.9 1.8	14.7 4.5	7.1 2.1	—	175 1205	175 1205	
2036T-75		36 914			3	2	18 5.5	—	21.5 6.5	10.4 3.1	21.8 6.6	10.9 3.3	—			
2048T-75		48 1219			4	3	23 7.0	—	30.5 9.3	14.9 4.5	29 8.8	14.8 4.5	—			
2060T-75		60 1524			4	4	29 8.8	—	39.5 12	19.4 5.9	36.1 11	18.7 5.6	—			
2072T-75		72 1828			4	4	32 9.8	—	48.5 14.7	24.0 7.3	43.2 13.1	22.6 6.8	—			
Flexhead Standard Tall Elbow 1" Internal Diameter (I.D.) Hose Series																
2024ET-50	½ 1.27	24 610	8 200	3 76.2	3	1	19 5.8	26.4 8.0	6.8 2	7.4 2.2	—	—	—	175 1205	175 1205	
2036ET-50		36 914			3	2	23 7.0	30.1 9.1	11.8 3.6	12.5 3.8	—	—	—			
2048ET-50		48 1219			4	3	27 8.2	33.8 10.3	16.9 5.1	17.6 5.3	—	—	—			
2060ET-50		60 1524			4	4	32 9.8	37.5 11.4	21.9 6.6	22.7 6.9	—	—	—			
2072ET-50		72 1828			4	4	35 10.7	41.2 12.5	27.0 8.2	27.8 8.4	—	—	—			

See Table Notes on Page 8.

FRICTION LOSS DATA & SPECIFICATIONS																
Model Number	Outlet Orifice Size	Hose Assembly Length	Minimum Bend Radius		Max. Number of 90° Bends		Equivalent Length of 1 in. Schedule 40 Pipe (Ft.)								Max. Rated Working Pressure	
			FM	UL	UL	FM	UL	FM						FM	UL	
								5.6 k-Factor	8.0 k-Factor	11.2 k-Factor	14.0 k-Factor	16.8 k-Factor	22.4 k-Factor			
	In./cm.	In./mm.	In./mm.	In./mm.	In./mm.	In./mm.	Ft./m.	Ft./m.	Ft./m.	Ft./m.	Ft./m.	Ft./m.	Ft./m.	PSI/Kpa	PSI/Kpa	
2024ET-75	¾ 1.90	24 610	8 200	3 76.2	3	1	18 5.5	—	8.8 2.6	8.7 2.6	14.7 4.5	8.2 2.5	—	175 1205	175 1205	
2036ET-75		36 914			3	2	23 7.0	—	25.5 7.7	14.2 4.2	21.8 6.6	13 3.9	—			
2048ET-75		48 1219			4	3	23 7.0	—	32.9 10	18.4 5.6	29 8.8	17.8 5.4	—			
2060ET-75		60 1524			4	4	29 8.8	—	40.6 12.3	22.7 6.9	36.1 11.0	22.6 6.8	—			
2072ET-75		72 1828			4	4	32 9.8	—	48.5 14.7	27.0 8.2	43.2 13.1	27.5 8.3	—			
Flexhead High Pressure 1" Internal Diameter (I.D.) Hose Series																
2024H-50	½ 1.27	24 610	8 200	3 76.2	3	2	11 3.4	18.4 5.6	7.7 2.3	7.6 2.3	—	—	—	300 2068	300 2068	
2036H-50		36 914			3	3	16 4.9	26.6 8.1	11.5 3.5	11.5 3.5	—	—	—			
2048H-50		48 1219			4	4	24 7.3	30.3 9.2	15.3 4.6	15.4 4.7	—	—	—			
2060H-50		60 1524			4	4	29 8.8	35.8 10.9	19.1 5.8	19.3 5.8	—	—	—			
2072H-50		72 1828			4	4	35 10.7	45.6 13.9	23.0 7	23.2 7	—	—	—			
2024H-75	¾ 1.90	24 610	8 200	3 76.2	3	2	12 3.7	—	14.7 4.5	6.8 2.0	14.7 4.5	7.1 2.1	—	300 2068	300 2068	
2036H-75		36 914			3	3	18 5.5	—	21.5 6.5	11.4 3.4	21.8 6.6	10.9 3.3	—			
2048H-75		48 1219			4	4	23 7.0	—	30.5 9.2	16.0 5.1	29 8.8	14.8 4.5	—			
2060H-75		60 1524			4	4	29 8.8	—	39.5 12	20.6 6.2	36.1 11.0	18.7 5.7	—			
2072H-75		72 1828			4	4	32 9.8	—	48.5 14.7	25.3 7.7	43.2 13.1	22.6 6.8	—			
Flexhead High Pressure Elbow 1" Internal Diameter (I.D.) Hose Series																
2024HE-50	½ 1.27	24 610	8 200	3 76.2	3	2	19 5.8	14.7 4.5	6.8 2	7.4 2.2	—	—	—	300 2068	300 2068	
2036HE-50		36 914			3	3	23 7.0	21.8 6.6	11.8 3.6	12.5 3.8	—	—	—			
2048HE-50		48 1219			4	4	27 8.2	29.0 8.8	16.9 5.1	17.6 5.3	—	—	—			
2060HE-50		60 1524			4	4	32 9.8	36.1 11	21.9 6.6	22.7 6.9	—	—	—			
2072HE-50		72 1828			4	4	35 10.7	43.2 13.1	27.0 8.2	27.8 8.4	—	—	—			
2024HE-75	¾ 1.90	24 610	8 200	3 76.2	3	2	18 5.5	—	14.7 4.5	—	14.7 4.5	8.2 2.5	—	300 2068	300 2068	
2036HE-75		36 914			3	3	23 7.0	—	25.2 7.7	26 7.9	21.8 6.6	13 3.9	—			
2048HE-75		48 1219			4	4	23 7.0	—	32.9 10	33 10	29 8.8	17.8 5.4	—			
2060HE-75		60 1524			4	4	29 8.8	—	40.5 12.3	40 12.2	36.1 11.0	22.6 6.8	—			
2072HE-75		72 1828			4	4	32 9.8	—	48.5 14.8	47 14.3	43.2 13.1	27.5 8.3	—			
Flexhead Dry Pendent System 1" Internal Diameter (I.D.) Hose Series																
2024-DPS	1 2.54	24 610	7 180	—	—	1	—	18.4 5.6	7.7 2.3	7.6 2.3	—	7.1 2.1	10.7 3.3	—	175 1205	
2036-DPS		36 914			—	2	—	26.6 8.1	11.5 3.5	11.5 3.5	—	10.9 3.3	15.1 4.6			
2048-DPS		48 1219			—	3	—	30.3 9.2	15.3 4.7	15.4 4.7	—	14.8 4.5	21.5 6.5			
2060-DPS		60 1524			—	4	—	35.8 10.9	19.1 5.8	19.3 5.9	—	18.7 5.7	25.3 7.7			
2072-DPS		72 1828			—	4	—	45.6 13.9	23 7	23.2 7	—	22.6 6.9	26.9 8.1			

See Table Notes on Page 8.

FRICTION LOSS DATA & SPECIFICATIONS															
Model Number	Outlet Orifice Size	Hose Assembly Length	Minimum Bend Radius		Max. Number of 90° Bends		Equivalent Length of 1 in. Schedule 40 Pipe (Ft.)							Max. Rated Working Pressure	
			FM	UL	UL	FM	UL	FM						FM	UL
								5.6 k-Factor	8.0 k-Factor	11.2 k-Factor	14.0 k-Factor	16.8 k-Factor	22.4 k-Factor		
	In./cm.	In./mm.	In./mm.	In./mm.	In./mm.	In./mm.	Ft./m.	Ft./m.	Ft./m.	Ft./m.	Ft./m.	Ft./m.	Ft./m.	PSI/Kpa	PSI/Kpa
Flexhead Institutional 1" Internal Diameter (I.D) Hose Series															
2024I	½ 1.27	24 610	8 200	3 76.2	3	1	11 3.4	18.4 5.6	—	—	—	—	—	175 1205	175 1205
2036I		36 914			3	3	16 4.9	26.6 8.1	—	—	—	—	—		
2048I		48 1219			4	4	24 7.3	30.3 9.2	—	—	—	—	—		
2060I		60 1524			4	4	29 8.8	35.8 10.9	—	—	—	—	—		
2072I		72 1828			4	4	35 10.7	45.6 13.9	—	—	—	—	—		
2024I	¾ 1.90	24 610	8 200	3 76.2	3	1	12 3.7	—	—	—	11.6 3.5	—	—	175 1205	175 1205
2036I		36 914			3	2	18 5.5	—	—	—	16 4.9	—	—		
2048I		48 1219			4	3	23 7.0	—	—	—	17.9 5.4	—	—		
2060I		60 1524			4	4	29 8.8	—	—	—	24.7 7.5	—	—		
2072I		72 1828			4	4	32 9.8	—	—	—	28.9 8.8	—	—		
Flexhead Institutional for use with Amerlux Ceiling System - 1" Internal Diameter (I.D) Hose Series															
2024IA	½ 1.27	24 610	8 200	—	—	1	11 3.4	—	18.4 5.6	—	—	—	—	175 1205	175 1205
2036IA		36 914			—	2	16 4.9	—	26.6 8.1	—	—	—	—		
2048IA		48 1219			—	3	24 7.3	—	30.3 9.2	—	—	—	—		
2060IA		60 1524			—	4	29 8.8	—	35.8 10.9	—	—	—	—		
2072IA		72 1828			—	4	35 10.7	—	45.6 13.9	—	—	—	—		

## NOTES:

### Model Numbers:

- "SF" designates SuperFlex™ Hose series.
- "ESF" designates SuperFlex™ Elbow Hose series.
- "E" designates elbow drop hose series
- "T" designates straight tall style hose
- "ET" designates elbow tall style hose series.
- "H" designates high pressure 300psi working pressure hose series.
- "HE" designates high pressure 300psi elbow hose series.
- "DPS" designates dry pendant system.
- "DT" designates drain tee hose series used in dry pendent/freezer application.
- "DPS" and "DT" models are approved for use in cold storage application (Freezer, Cold Chamber) and combine an approved flexible sprinkler hose and an approved dry pendent sprinkler. UHO-1 or UHO-3 is required to connect the flexible sprinkler hose to the dry sprinkler.
- "I" indicates institutional flexible hose.
- "A" indicates models for use with Amerlux Ceiling System.
- "50" designates ½" Outlet Hose series. The "75" designates ¾" Outlet Hose series. Inlet size 1".
- Max Ambient Temperature Rating on all model numbers are 300° F (148° C).
- Equivalent lengths are shown with maximum number of 90° bends at the minimum bend radius per agency. 2-45° or 3-30° bend equal 1-90° bend. Different values were obtained by FM and UL due to the difference in minimum bend radius, testing protocol and calculation methods. Please see individual standards for more information relative to Friction Loss (equivalent length of pipe).
- All hoses require a minimum of one bend for installation. Bend radius tool available for 3" bend "T" hose, "SF" hose does not require bend radius tool.
- FM equivalent length calculation includes Sprinkler Head Friction Loss.
- See listing(s) approval agency for the latest approval details.



ARGCO's line of Ductile Iron Threaded Fittings conform to, comply with the following standards:

ASTM A536 Grade 65-45-12

ASME B 16.3 Ductile Iron Threaded Fittings Class 150

ANSI/ASME B1.20.1 Pipe Threads, General Purpose (inch) NPT

## **DUCTILE IRON THREADED FITTINGS CATALOG**

**ARGCO SALES:** toll free: 800-854-1015

[argco.com](http://argco.com)

international: 760-727-1644 | fax: 800-924-5922

email: [info@argco.com](mailto:info@argco.com)



## DUCTILE IRON FITTINGS



ARGCO's Ductile Iron Fittings are sold in bulk. Contact your sales rep at 800-854-1015 for volume pricing. Use the order form below to place your orders.

QTY	ITEM #	DESCRIPTION	List Price	Box Quantity
_____	7110000	Ductile Iron 90° Elbow 1"	\$3.96	35
_____	7110001	Ductile Iron 90° Elbow 1-1/4"	\$5.58	42
_____	7110002	Ductile Iron 90° Elbow 1-1/2"	\$8.07	32
_____	7110003	Ductile Iron 90° Elbow 2"	\$12.23	17
_____	7110006	Ductile Iron 45° Elbow 1"	\$5.53	85
_____	7110007	Ductile Iron 45° Elbow 1-1/4"	\$7.31	50
_____	7110008	Ductile Iron 45° Elbow 1-1/2"	\$12.23	35
_____	7110009	Ductile Iron 45° Elbow 2"	\$14.11	22
_____	7110012	Ductile Iron Straight Tee 1"	\$6.04	56
_____	7110013	Ductile Iron Straight Tee 1-1/4"	\$9.34	32
_____	7110014	Ductile Iron Straight Tee 1-1/2"	\$11.88	25
_____	7110015	Ductile Iron Straight Tee 2"	\$16.75	15
_____	7110018	Ductile Iron Coupling 1"	\$3.10	110
_____	7110019	Ductile Iron Coupling 1-1/4"	\$4.62	72
_____	7110020	Ductile Iron Coupling 1-1/2"	\$6.40	57
_____	7110021	Ductile Iron Coupling 2"	\$9.59	30
_____	7110022	Ductile Iron Reducing Coupling 1" x 1/2"	\$3.15	130
_____	7110023	Ductile Iron Reducing Coupling 1" x 3/4"	\$4.57	120
_____	7110026	Ductile Iron Reducing Tee 1" x 1/2" x 1"	\$6.09	64
_____	7110027	Ductile Iron Reducing Tee 1" x 3/4" x 1"	\$7.26	64
_____	7110028	Ductile Iron Reducing Tee 1" x 1" x 1/2"	\$5.74	74
_____	7110029	Ductile Iron Reducing Tee 1" x 1" x 3/4"	\$6.85	66
_____	7110030	Ductile Iron Reducing Tee 1" x 1" x 1-1/2"	\$16.50	34
_____	7110031	Ductile Iron Reducing Tee 1-1/4" x 1" x 1/2"	\$9.29	55
_____	7110032	Ductile Iron Reducing Tee 1-1/4" x 1" x 3/4"	\$10.51	48
_____	7110033	Ductile Iron Reducing Tee 1-1/4" x 1" x 1"	\$9.29	45
_____	7110034	Ductile Iron Reducing Tee 1-1/4" x 1" x 1-1/4"	\$9.29	40
_____	7110035	Ductile Iron Reducing Tee 1-1/4" x 1" x 1-1/2"	\$11.93	32
_____	7110036	Ductile Iron Reducing Tee 1-1/4" x 1-1/4" x 1/2"	\$8.88	48
_____	7110037	Ductile Iron Reducing Tee 1-1/4" x 1-1/4" x 3/4"	\$10.00	44
_____	7110038	Ductile Iron Reducing Tee 1-1/4" x 1-1/4" x 1"	\$9.14	40
_____	7110041	Ductile Iron Reducing Tee 1-1/2" x 1" x 1/2"	\$18.63	45
_____	7110042	Ductile Iron Reducing Tee 1-1/2" x 1" x 3/4"	\$17.46	42
_____	7110043	Ductile Iron Reducing Tee 1-1/2" x 1" x 1"	\$16.45	38
_____	7110044	Ductile Iron Reducing Tee 1-1/2" x 1" x 1-1/4"	\$20.76	33
_____	7110045	Ductile Iron Reducing Tee 1-1/2" x 1" x 1-1/2"	\$11.93	30
_____	7110046	Ductile Iron Reducing Tee 1-1/2" x 1-1/4" x 1/2"	\$12.89	40
_____	7110047	Ductile Iron Reducing Tee 1-1/2" x 1-1/4" x 3/4"	\$12.89	40
_____	7110048	Ductile Iron Reducing Tee 1-1/2" x 1-1/4" x 1"	\$11.88	32
_____	7110050	Ductile Iron Reducing Tee 1-1/2" x 1-1/2" x 1/2"	\$11.62	38
_____	7110051	Ductile Iron Reducing Tee 1-1/2" x 1-1/2" x 3/4"	\$12.89	36
_____	7110052	Ductile Iron Reducing Tee 1-1/2" x 1-1/2" x 1"	\$11.62	32
_____	7110053	Ductile Iron Reducing Tee 1-1/2" x 1-1/2" x 1-1/4"	\$16.60	26
_____	7110054	Ductile Iron Reducing Tee 1-1/2" x 1-1/2" x 2"	\$24.36	22

# DUCTILE IRON FITTINGS



QTY	ITEM #	DESCRIPTION	List Price	Box Quantity
_____	7110055	Ductile Iron Reducing Tee 2" x 1" x 2"	\$16.85	18
_____	7110056	Ductile Iron Reducing Tee 2" x 1-1/4" x 2"	\$18.27	16
_____	7110057	Ductile Iron Reducing Tee 2" x 1-1/2" x 1/2"	\$19.09	30
_____	7110058	Ductile Iron Reducing Tee 2" x 1-1/2" x 3/4"	\$19.09	28
_____	7110059	Ductile Iron Reducing Tee 2" x 1-1/2" x 1"	\$16.90	23
_____	7110060	Ductile Iron Reducing Tee 2" x 1-1/2" x 1-1/4"	\$25.74	20
_____	7110061	Ductile Iron Reducing Tee 2" x 1-1/2" x 1-1/2"	\$24.87	15
_____	7110062	Ductile Iron Reducing Tee 2" x 1-1/2" x 2"	\$19.09	15
_____	7110063	Ductile Iron Reducing Tee 2" x 2" x 1/2"	\$16.85	24
_____	7110064	Ductile Iron Reducing Tee 2" x 2" x 3/4"	\$16.85	24
_____	7110065	Ductile Iron Reducing Tee 2" x 2" x 1"	\$16.85	23
_____	7110066	Ductile Iron Reducing Tee 2" x 2" x 1-1/4"	\$18.27	19
_____	7110067	Ductile Iron Reducing Tee 2" x 2" x 1-1/2"	\$19.34	15
_____	7110068	Ductile Iron Reducing Tee 2-1/2" x 2" x 3/4"	\$9.29	23
_____	7110080	Ductile Iron 90°Reducing Elbow 1" x 1/2"	\$4.37	110
_____	7110081	Ductile Iron 90°Reducing Elbow 1" x 3/4"	\$4.72	90
_____	7110082	Ductile Iron 90° Reducing Elbow 1-1/4" x 1/2"	\$7.82	70
_____	7110083	Ductile Iron 90° Reducing Elbow 1-1/4" x 3/4"	\$8.32	65
_____	7110084	Ductile Iron 90° Reducing Elbow 1-1/4" x 1"	\$6.95	50
_____	7110085	Ductile Iron 90°Reducing Elbow 1-1/2" x 1"	\$9.70	40
_____	7110086	Ductile Iron 90°Reducing Elbow 1-1/2 x 1-1/4"	\$9.70	38
_____	7110087	Ductile Iron 90° Reducing Elbow 2" x 1/2"	\$22.64	45
_____	7110088	Ductile Iron 90°Reducing Elbow 2" x 3/4"	\$16.24	40
_____	7110089	Ductile Iron 90°Reducing Elbow 2" x 1"	\$15.79	32
_____	7110090	Ductile Iron 90° Reducing Elbow 2" x 1-1/4"	\$21.12	25
_____	7110091	Ductile Iron 90°Reducing Elbow 2" x 1-1/2"	\$15.79	20
_____	7110094	Ductile Iron Cross 1"	\$14.92	42
_____	7110095	Ductile Iron Cross 1-1/4"	\$21.07	24
_____	7110096	Ductile Iron Cross 1-1/2"	\$27.26	19
_____	7110097	Ductile Iron Cross 2"	\$38.63	12
_____	7110098	Ductile Iron Cross 1-1/4" x 1"	\$18.73	16
_____	7110099	Ductile Iron Cross 1-1/2" x 1"	\$27.26	14
_____	7110100	Ductile Iron Cross 2" x 1"	\$39.24	8
_____	7110103	Ductile Iron Bushing 1" x 1/2"	\$3.40	250
_____	7110104	Ductile Iron Bushing 1" x 3/4"	\$3.40	250
_____	7110105	Ductile Iron Bushing 1-1/4" x 1"	\$3.86	130
_____	7110106	Ductile Iron Bushing 1-1/2" x 1"	\$4.37	100
_____	7110107	Ductile Iron Bushing 1-1/2" x 1-1/4"	\$4.37	100
_____	7110108	Ductile Iron Bushing 2" x 1"	\$6.14	70
_____	7110109	Ductile Iron Bushing 2" x 1-1/4"	\$6.14	70
_____	7110110	Ductile Iron Bushing 2" x 1-1/2"	\$6.14	70
_____	7110113	Ductile Iron Cap 1"	\$3.86	170
_____	7110114	Ductile Iron Cap 1-1/4"	\$5.23	130
_____	7110115	Ductile Iron Cap 1-1/2"	\$6.95	80
_____	7110116	Ductile Iron Cap 2"	\$9.39	50



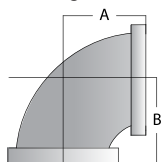
# DUCTILE IRON THREADED FITTINGS



**Notice:** D.I. Fittings have higher tensile strength than that of steel pipe, over tightening can cause damage to pipe threads which may cause leakage. D.I. Fitting should be tightened three turns beyond hand tighten, no more than four turns.

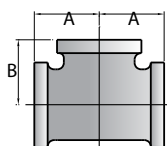
D.I. Threaded fittings are UL, cUL listed and Factory Mutual approved for 500psi service. D.I. Per ASTM A 536 grade 65-45-12. Dimensions conform to ANSI B16.3 Class 150. Threads are NPT per ANSI/ASME B1.20.1

Description  
D.I. 90 Degreed Elbow



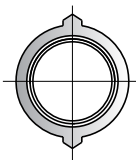
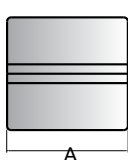
NOM SIZE	ITEM CODE BLACK	DIMENSION		ITEM WEIGHT
		A	B	
1"	1D90B0606	1.50	1.50	0.62
1 1/4"	1D90B0707	1.75	1.75	0.90
1 1/2"	1D90B0808	1.94	1.94	1.20
2"	1D90B0909	2.25	2.25	1.85

Description  
D.I. Straight Tee



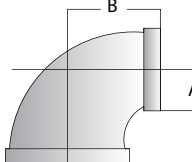
NOM SIZE	ITEM CODE BLACK	DIMENSION		ITEM WEIGHT
		A	B	
1"	1DT060606	1.50	1.50	0.85
1 1/4"	1DT070707	1.75	1.75	1.22
1 1/2"	1DT080808	1.94	1.94	1.55
2"	1DT090909	2.25	2.25	2.45

Description  
D.I. Coupling



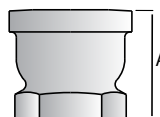
NOM SIZE	ITEM CODE BLACK	DIM. A	ITEM WEIGHT
1"	1DCP0606	1.50	0.85
1 1/4"	1DCP0707	1.75	1.22
1 1/2"	1DCP0808	1.94	1.55
2"	1DCP0909	2.25	2.45

Description  
D.I. Red. 90 Deg. Elbow



NOM SIZE	ITEM CODE BLACK	DIMENSION		ITEM WEIGHT
		A	B	
1 X 1/2"	1D90R0604	1.26	1.36	0.44
1 X 3/4"	1D90R0605	1.37	1.45	0.52
1 1/4 X 1/2"	1D90R0704	1.34	1.53	0.64
1 1/4 X 3/4"	1D90R0705	1.45	1.62	0.72
1 1/4" X 1"	1D90R0706	1.58	1.67	0.75
1 1/2" X 1"	1D90R0806	1.65	1.80	0.92
1 1/2" X 1 1/4"	1D90R0807	1.82	1.88	1.08
2" X 1/2"	1D90R0904	1.49	1.88	1.08
2" X 3/4"	1D90R0905	1.60	1.97	1.24
2" X 1"	1D90R0906	1.73	2.02	1.40
2" X 1 1/4"	1D90R0907	1.90	2.10	1.52
2" X 1 1/2"	1D90R0908	2.02	2.16	1.65

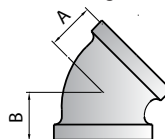
Description  
D.I. Reducing Coupling



NOM SIZE	ITEM CODE BLACK	DIM. A	ITEM WEIGHT
1 X 1/2"	1DCR0604	1.69	0.39
1 X 3/4"	1DCR0605	1.69	0.53



Description  
D.I. 45 Degreed Elbow

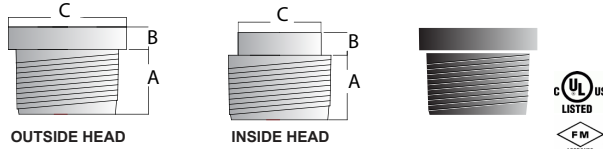


NOM SIZE	ITEM CODE BLACK	DIMENSION		ITEM WEIGHT
		A	B	
1"	1D45B0606	1.12	1.12	0.46
1 1/4"	1D45B0707	1.29	1.29	0.73
1 1/2"	1D45B0808	1.43	1.43	0.92
2"	1D45B0909	1.68	1.68	1.50

# DUCTILE IRON THREADED FITTINGS



Description   
D.I. Bushing



NOM SIZE	ITEM CODE	DIMENSION			STYLE	ITEM WT.
	BLACK	A	B	C		
1 X 1/2"	1DBUS0604	0.75	0.25	1.42	OUT	0.22
1 X 3/4"	1DBUS0605	0.75	0.25	1.42	OUT	0.17
1 1/4" X 1"	1DBUS0706	0.80	0.28	1.76	OUT	1.28
1 1/2" X 1"	1DBUS0806	0.83	0.31	2.00	OUT	0.44
1 1/2" X 1 1/4"	1DBUS0807	0.83	0.31	2.00	OUT	0.30
2" X 1"	1DBUS0906	0.88	0.41	1.95	IN	0.66
2" X 1 1/4"	1DBUS0907	0.88	0.34	2.48	OUT	0.72
2" X 1 1/2"	1DBUS0908	0.88	0.34	2.48	OUT	0.61

Description   
D.I. Cross



NOM SIZE	ITEM CODE	DIMENSION		ITEM WEIGHT
	BLACK	A	B	
1"	1DX0606	1.50	1.50	0.98
1 1/4"	1DX0707	1.75	1.75	1.50
1 1/2"	1DX0808	1.94	1.94	1.90
2"	1DX0909	2.25	2.25	2.95
1 1/4" X 1"	1DX0706	1.58	1.67	1.27
1 1/2" X 1"	1DX0806	1.65	1.80	1.45
2" X 1"	1DX0906	1.73	2.02	2.10

Description   
D.I. Cap



NOM SIZE	ITEM CODE	DIM.	ITEM WEIGHT
	BLACK	A	
1"	1DK06	1.16	0.32
1 1/4"	1DK07	1.28	0.43
1 1/2"	1DK08	1.33	0.60
2"	1DK09	1.45	0.91

Description   
D.I. Reducing Tee



NOM SIZE	ITEM CODE	DIMENSION			ITEM WEIGHT
	BLACK	A	B	C	
1" x 1" x 1/2"	1DT060604	1.26	1.26	1.36	0.64
1" x 1" x 3/4"	1DT060605	1.37	1.37	1.45	0.73
1" x 1/2" x 1"	1DT060406	1.50	1.36	1.50	0.71
1" x 3/4" x 1"	1DT060506	1.50	1.45	1.50	0.76
1" x 1" x 1 1/4"	1DT060607	1.67	1.67	1.58	0.98
1" x 1" x 1 1/2"	1DT060608	1.80	1.80	1.65	1.16
1 1/4" x 1" x 1/2"	1DT070604	1.34	1.26	1.53	0.82
1 1/4" x 1" x 3/4"	1DT070605	1.45	1.37	1.62	0.90
1 1/4" x 1" x 1"	1DT070606	1.58	1.50	1.67	1.00
1 1/4" x 1" x 1 1/4"	1DT070607	1.75	1.67	1.75	1.08
1 1/4" x 1" x 1 1/2"	1DT070608	1.88	1.88	1.82	1.42
1 1/4" x 1 1/4" x 1/2"	1DT070704	1.34	1.34	1.53	0.86
1 1/4" x 1 1/4" x 3/4"	1DT070705	1.45	1.45	1.62	0.92
1 1/4" x 1 1/4" x 1"	1DT070706	1.58	1.58	1.67	0.95
1 1/4" x 1 1/4" x 1"	1DT070708	1.88	1.88	1.82	1.45
1 1/4" x 1 1/4" x 2"	1DT070709	2.10	2.10	1.90	1.75
1 1/2" x 1" x 1/2"	1DT080604	1.41	1.34	1.66	0.95
1 1/2" x 1" x 3/4"	1DT080605	1.52	1.37	1.75	1.14
1 1/2" x 1" x 1"	1DT080606	1.65	1.50	1.80	1.17
1 1/2" x 1" x 1 1/4"	1DT080607	1.82	1.67	1.88	1.34
1 1/2" x 1" x 1 1/2"	1DT080608	1.94	1.80	1.94	1.45
1 1/2" x 1 1/4" x 1/2"	1DT080704	1.41	1.34	1.66	1.05
1 1/2" x 1 1/4" x 3/4"	1DT080705	1.52	1.45	1.75	1.15
1 1/2" x 1 1/4" x 1"	1DT080706	1.65	1.58	1.80	1.25
1 1/2" x 1 1/4" x 2"	1DT080709	2.16	2.10	2.02	1.90
1 1/2" x 1 1/2" x 1/2"	1DT080804	1.41	1.41	1.16	1.15
1 1/2" x 1 1/2" x 3/4"	1DT080805	1.52	1.52	1.75	1.24
1 1/2" x 1 1/2" x 1"	1DT080806	1.65	1.65	1.80	1.30
1 1/2" x 1 1/2" x 1"	1DT080807	1.82	1.82	1.88	1.48
1 1/2" x 1 1/2" x 2"	1DT080809	2.16	2.16	2.02	1.98
2" x 1" x 2"	1DT090609	2.25	2.02	2.25	2.15
2" x 1 1/4" x 2"	1DT090709	2.25	2.10	2.25	2.30
2" x 1 1/2" x 1/2"	1DT090804	1.49	1.41	1.88	1.50
2" x 1 1/2" x 3/4"	1DT090805	1.60	1.52	1.97	1.62
2" x 1 1/2" x 1"	1DT090806	1.73	1.65	2.02	1.64
2" x 1 1/2" x 1 1/4"	1DT090807	1.90	1.82	2.10	1.80
2" x 1 1/2" x 1 1/2"	1DT090808	2.02	1.94	2.16	2.00
2" x 1 1/2" x 2"	1DT090809	2.25	2.16	2.25	2.35
2" x 2" x 1/2"	1DT090904	1.49	1.49	1.88	1.60
2" x 2" x 3/4"	1DT090905	1.60	1.60	1.97	1.68
2" x 2" x 1"	1DT090906	1.73	1.73	2.02	1.85
2" x 2" x 1 1/4"	1DT090907	1.90	1.90	2.10	2.04
2" x 2" x 1 1/2"	1DT090908	2.02	2.02	2.16	2.18
2" x 2" x 2 1/2"	1DT090910	2.60	2.60	2.39	3.61
2 1/2" x 2" x 3/4"	1DT100905	1.74	1.60	2.32	2.28



**ARGCO.com**

For more products, pricing, technical data, SDS, log onto: [www.argco.com](http://www.argco.com)

**ARGCO SALES:** toll free: 800-854-1015  
international: 760-727-1644 | fax: 800-924-5922  
email: [info@argco.com](mailto:info@argco.com)

Fig. 69 (Formerly Afcon Fig. 300) Adjustable Swivel Ring, Tapped Per NFPA Standards

**Size Range:** 1/2" through 8"  
**Material:** Carbon steel  
**Finish:** Strap is Pre-Galvanized Zinc Material. Nut is Zinc Plated.  
**Service:** Recommended for suspension of non-insulated **stationary** pipe line.  
**Maximum Temperature:** 450° F  
**Approvals:** Complies with Federal Specification A-A-1192A (Type 10), WW-H-171-E (Type 10), and ANSI/MSS SP-58 (Type 10). UL Listed and FM Approved (Sizes 3/4" - 8").  
**Features:**

- 1/2" - 2" sizes designed for use with steel and CPVC piping and manufactured with FBC System Compatible oil.
- Threads are countersunk so that they cannot become burred or damaged.
- Knurled swivel nut provides vertical adjustment after piping is in place.
- Captured swivel nut in the 1/2" through 6" sizes. The capture is permanent in the bottom portion of the band, allowing the hanger to be opened during installation if desired, but not allowing the nut to fall completely out.

**Ordering:** Specify size, figure number and name.  
**Non-captured nut also available upon request.**

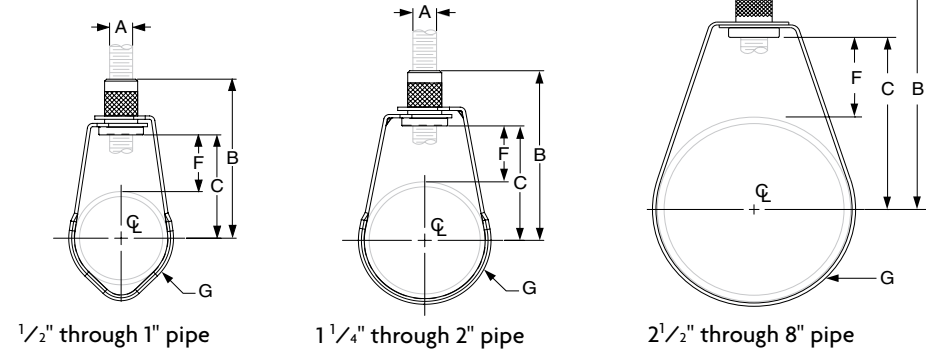


FIG. 69: DIMENSIONS (IN) • LOADS (LBS) • WEIGHT (LBS)							
Pipe Size	Max Load	Weight	Rod Size A	B	C	F	G Width
1/2	300	0.10	3/8	27/8	2	19/16	5/8
3/4		0.10		23/4	17/8	15/16	
1		0.10		29/16	111/16	1	
11/4		0.10		25/8	13/4	7/8	
11/2		0.10		23/4	17/8		
2		0.11		33/4	23/8	11/8	
21/2	525	0.20	3/4	4	23/4	15/16	3/4
3		0.20		313/16	215/16	13/16	
4	650	0.30	1/2	411/16	313/16	19/16	
5	1,000	0.54		55/16	43/8		
6		0.65		611/16	59/16	21/4	
8		1.00		89/16	79/16	33/4	



1/2" through 2" Size  
Rounded Edge Design

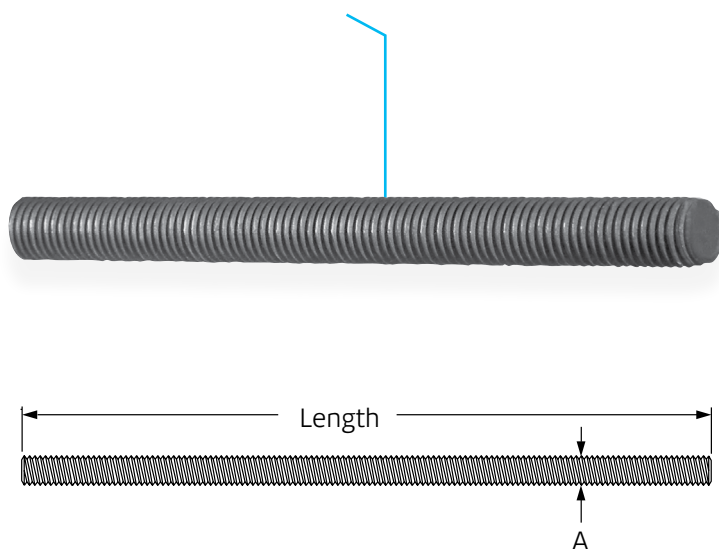


2 1/2" through 8" Size

PROJECT INFORMATION		APPROVAL STAMP	
Project:		<input type="checkbox"/> Approved	
Address:		<input type="checkbox"/> Approved as noted	
Contractor:		<input type="checkbox"/> Not approved	
Engineer:		Remarks:	
Submittal Date:			
Notes 1:			
Notes 2:			

## Continuous Threaded Rod

**Fig. 146** (Formerly Afcon Fig. 650)



**Size Range:** ¼" through 1½" stocked in six, ten, and twelve foot lengths. Other even foot lengths can be furnished to order.

**Material:** Carbon steel or Stainless Steel Gr 304

**Threads:** National Coarse (UNF), rod threaded complete length.

**Finish:** Plain or Zinc Plated (Hot-Dip Galvanized optional)

**Maximum Temperature:**  
Zinc Plated 450°F, Stainless Steel 650°F

**Approvals:** Complies with MSS SP-58.

**Ordering:** Specify rod diameter and length, figure number, name and finish.

**Note:** The acceptability of galvanized coatings at temperatures above 450°F is at the discretion of the end user.



**Fig. 146: Dimensions (in) • Loads (lbs) • Weight (lbs)**

Rod Size A	Threads per Inch	Max Load	Weight per Ft.
		650° F	
¼	20	240	0.12
⅜	16	730	0.30
½	13	1,350	0.53
⅝	11	2,160	0.84
¾	10	3,230	1.20
⅞	9	4,480	1.70
1	8	5,900	2.30
1¼	7	9,500	3.60
1½	6	13,800	5.10

PROJECT INFORMATION	APPROVAL STAMP
Project:	Approved
Address:	Approved as noted
Contractor:	Not approved
Engineer:	Remarks:
Submittal Date:	
Notes 1:	
Notes 2:	