

GENERAL NOTES

1. NARRATIVE:
A. THE XFINITY PUYALLUP LOCATION IS CURRENTLY PROTECTED THROUGHOUT BY EXISTING FIRE SPRINKLERS. THIS PROJECT IS A TENANT IMPROVEMENT TO THE EXISTING SPACE. OUR SCOPE IS TO PROVIDE PROTECTION IN ACCORDANCE WITH NEW WALL, CEILING, AND LIGHT MOVEMENT DURING CONSTRUCTION. NO CHANGE TO EXISTING SPRINKLER SPACING, K-FACTOR, HAZARD CLASSIFICATION OR HYDRAULIC CALCULATIONS. ALL UNDERGROUND PIPING AND BACKFLOW PREVENTION IS EXISTING. NO WORK TO SYSTEM VALVES.
2. DESIGN CRITERIA:
A. THE SYSTEM WILL BE DESIGNED PER NFPA-13(2019)
B. ENTIRE SPACE TO BE LIGHT HAZARD OCCUPANCY.
C. QUICK RESPONSE REDUCTION FOR QUICK RESPONSE HEADS.
3. HYDRAULIC CALCULATIONS:
A. HYDRAULIC CALCULATIONS ARE NOT REQUIRED FOR THIS WORK.
4. SEISMIC BRACING AND HANGERS SHALL BE PER NFPA-13(2019).
A. NO SIESMIC BRACING REQUIRED FOR THIS WORK.
5. FLEXIBLE DROPS
VIC-FLEX FLEXIBLE DROPS ARE USED FOR PENDENT SPRINKLERS. 48" TO 72" LONG HOSES FEEDING 1/2" HEAD THROUGH 5 BENDS (MAXIMUM) WITH 2" MIN RADIUS AND PER MANUFACTURERS LISTING ADDS 21' OF EQUIVALENT 1" PIPE.

EQUIPMENT NOTES

1. GENERAL:
ALL MATERIAL SHALL BE UL LISTED OR FM APPROVED.
2. PIPE:
A. BLACK SCH.40 FOR ALL PIPE
3. FITTINGS:
A. VICTAULIC FIRELOCK FITTINGS - GROOVED
B. VICTAULIC INSTALLATION READY FITTINGS
C. BLACKCAST IRON - THREADED
4. HANGERS:
A. SEE DEATILS
5. SEISMIC BRACING:
A. EXISTING - NO WORK
6. BACKFLOW PREVENTER:
A. EXISTING - NO WORK
7. SYSTEM VALVES:
B. EXISTING - NO WORK
8. CONTROL VALVES:
A. EXISTING - NO WORK
9. SYSTEM CHECK VALVE:
A. EXISTING - NO WORK
10. AUXILIARY DRAIN VALVES:
A. CONBRACO BALL VALVE - WHERE NECESSARY
11. ALARM DEVICES:
A. EXISTING - NO WORK
13. SPRINKLERS:
A. VICTAULIC - SEE LEGEND

SPRINKLER HEAD LEGEND

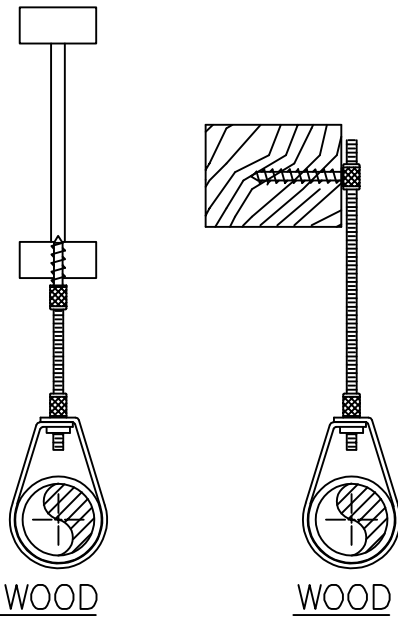
RELOCATED RECESSED PENDENT	●	VICTAULIC V2707 SR 1/2" 5.6K 155F CHROME SEMI-RECESSED PENDANT	TOTAL 15
	●	● + ○ STACKED SPRINKLERS	TOTAL NEW=0
A STOCK OF SPARE SPRINKLERS SHALL BE MAINTAINED ON THE PREMISES PER NFPA-13.			

CONTACTS

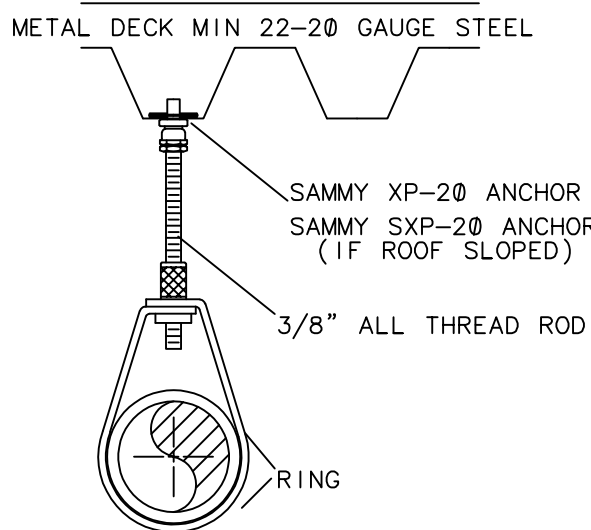
OWNER
CAFARO NORTHWEST PARTNERSHIP
PO BOX 586
ANNANDALE, NJ 08801

CONTRACTOR
BCI NATIONAL CONSTRUCTION
3158 S MAIN ST
SALT LAKE CITY, UTAH 84115

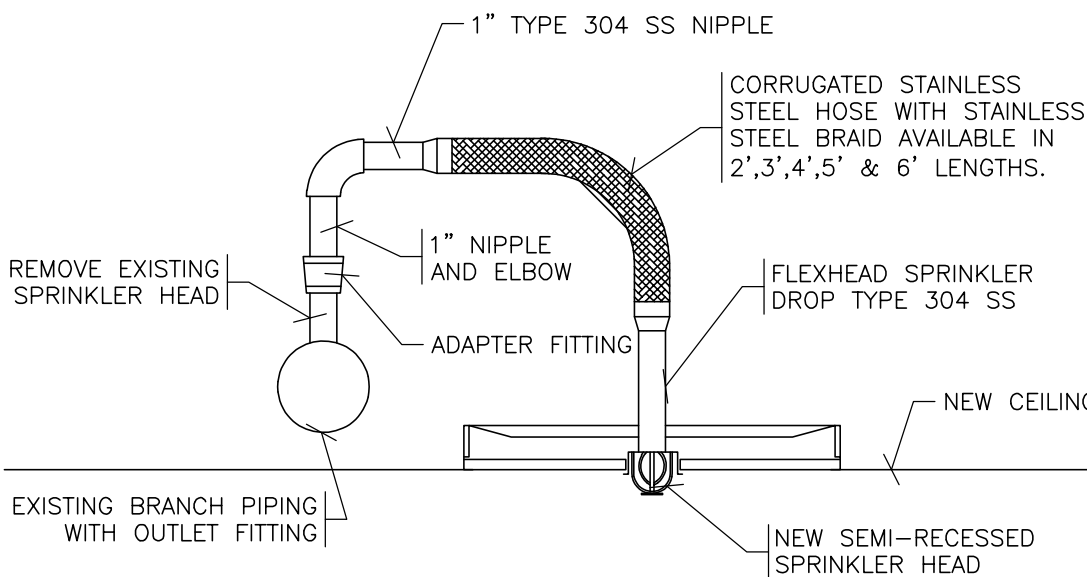
DETAILS



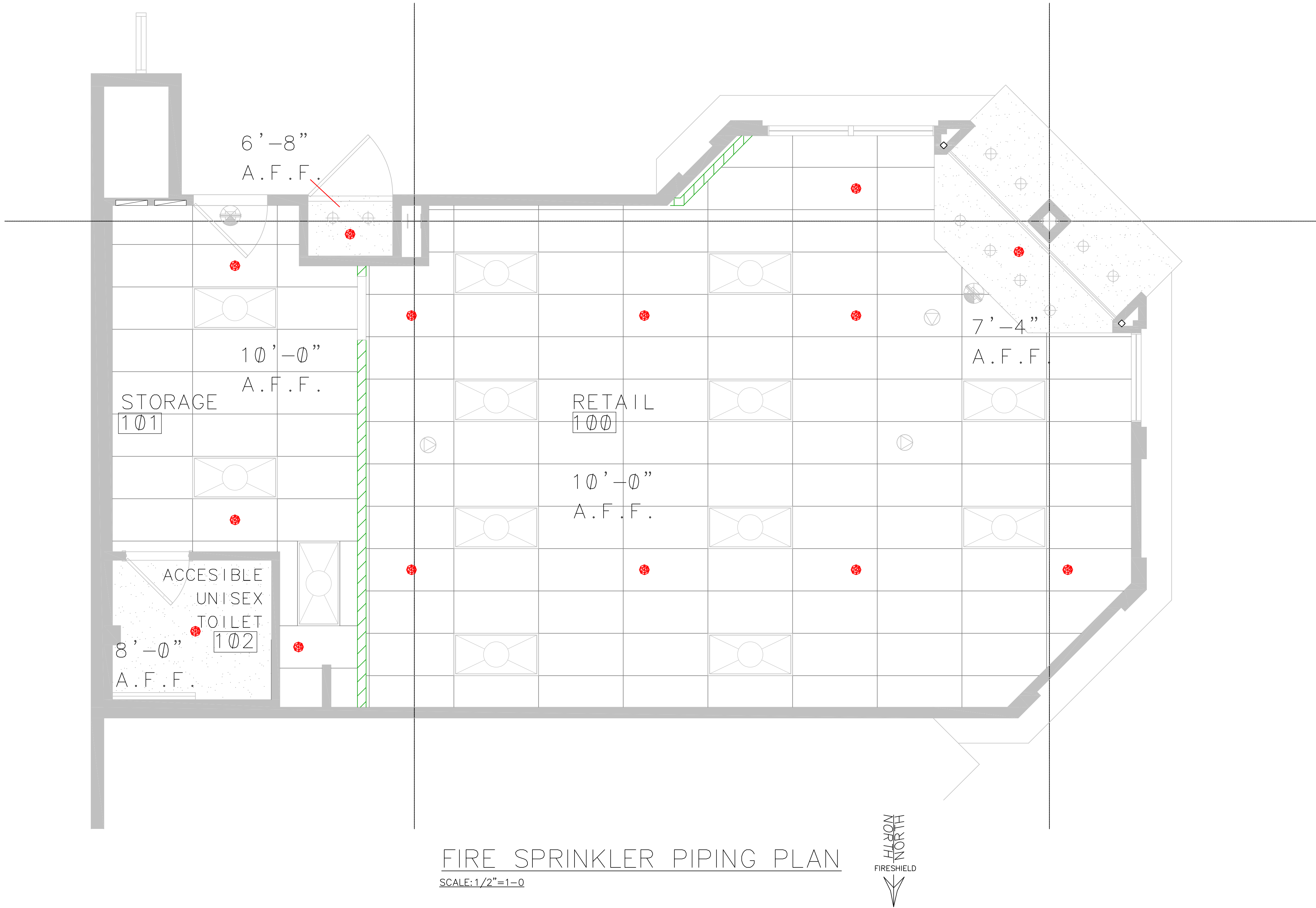
#15 SUPER SAMMY SCREW
FOR WOOD



#15 SAMMY X-PRESS XP-20
FOR USE ON PIPING UNDER METAL DECK
WHERE BEAM OR TRUSS IS NOT AVAILABLE
(MIN 22-20 GAUGE STEEL)

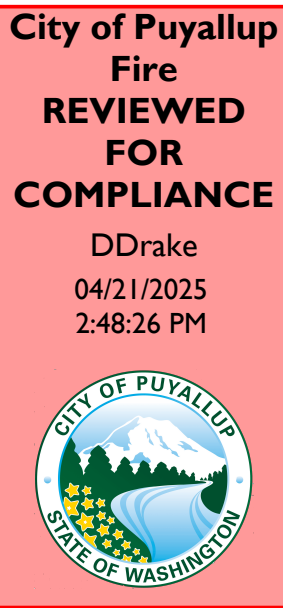


FLEXIBLE SPRINKLER HEAD
DETAIL



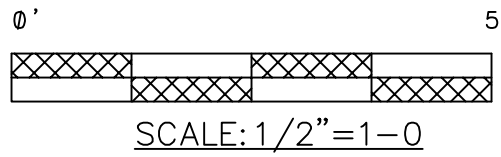
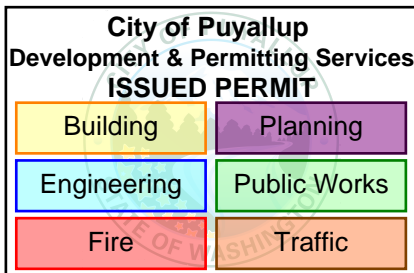
FIRE SPRINKLER PIPING PLAN

SCALE: 1/2"=1'-0



THE APPROVED CONSTRUCTION PLANS AND ALL ENGINEERING MUST BE POSTED ON THE JOB AT ALL INSPECTIONS IN A VISIBLE AND READILY ACCESSIBLE LOCATION.

Approval of submitted plans is not an approval of omissions or oversight by this office or noncompliance with any applicable regulations of local government. The contractor is responsible for making sure that the building complies with all applicable building codes and regulations of the local government.



REVISIONS

ABBREVIATIONS

HANGER LEGEND

SYMBOL LEGEND

DRAWING NAME

DRAWING CONTENTS

DRAWING #

PROJECT NAME

STAMP

--

BOJ = BOTTOM OF JOIST BB = BOTTOM OF BEAM BOD = BOTTOM OF DECK TOB = TOP OF BEAM TOS = TOP OF STEEL AFT = ABOVE FINISH FLOOR FOW = FACE OF WALL NTS = NOT TO SCALE PRV = PRESSURE RED. VALVE RM = ROOF MANIFOLD SP = STANDPIPE N/C = NOT IN CONTRACT DO = DITTO UON = UNLESS OTHERWISE NOTED

ATR = ALL THREAD ROD CSR = COACH SCREW ROD TOR = THREAD ONE END TBE = THREAD BOTH ENDS TGO = THREAD BY GROOVE FXG = FLANGE BY GROOVE GG = GROOVE x GROOVE PP = POLISHED x GROOVE BL = BRANOLINE XM = CROSSMAIN GOL = GROOVE-O-LET (WELD) FLO = FLANGE B2B = BACK TO BACK
--

#1 U-HOOK #2 COACH SCREW ROD & RING #3 CEIL FLANGE, 1/4" LAGS #4 EYE ROD, FASTENER & RING #5 U-BOLT (PER DETAILS) #6 KWIK BOLT, ROD COUP, R&R #7 POWER DRIVEN STUD, R & R #8 TOGGLE NUT, ROD & RING #9 REG C-CLAMP, RETAIN STRAP	#10 TOP BM C-CLMP, STRAP #11 TRAPEZE (SEE DETAIL) #12 SIDE BEAM BRACKET #13 SHORT STRAP #14 EYE NUT, ROD, RING #15 SAMMY SCREWS #16 #17 #18
--	---

□ GROOVED FITTING OR COUP. + 2-WAY EARTHQUAKE BRACE + LAT BRACE + LONG BRACE C O RISERS / CHANGE IN ELEV / GENERAL HANGER LOCATION II UNION WET SYSTEM RISER DRY SYSTEM RISER + O BALL VALVE	□ THREADED CAP FITTING □ BUTTERFLY VALVE □ CHECK VALVE □ FIRE DEPT CONNECTION □ FIRE HYDRANT □ FLOW SWITCH □ SPRINKLERS (SEE COVER)
--	---

1 COVER

GENERAL NOTES, DETAILS, SITE PLAN

1 OF 1

XFINITY PUYALLUP REMODEL TI 3500 S. MERIDIAN AVE, SPACE #503 PUYALLUP, WA 98373 DRAWING TITLE GENERAL NOTES, DETAILS, SECTION, SITE/UTILITY, PIPING PLAN DATE 3/25 CONTRACT 3775 UOW NAME FP-1 DRAWN BY STREULI SCALE 1/4"=1'-0 DRW # 1 OF 1
--

WASHINGTON STATE CERTIFICATE OF COMPETENCY FIRE SPRINKLER SYSTEMS Matthew Leonard Fields 9846-0824-C Level 3 Fireshield, Inc. FIRESHIELD Signature 3/18/2025 DATE

