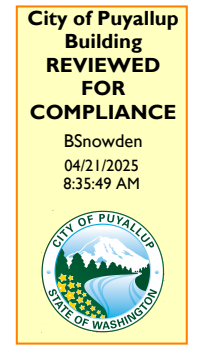
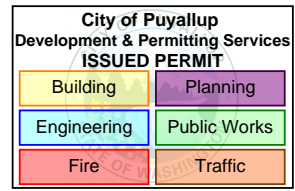


HVAC UNITS					
Zone	Manuf.	Exist. Qty	New Qty	Tonnage	Total
MS	AAON	5	0	50	250
PHARMACY	LG	1	0	3	3
FOOD SERVICE	AAON	1	0	15	15
TIRE SALES	TRANE	1	0	6	6
TIRE INSTALL	AAON	0	1	10	10
OFFICE	LG	1	0	3	3
OPTICAL	LG	1	0	2	2
E.D.P.	LG	1	0	2	2
HVAC UNITS TOTAL:		11	1		291
			MS Tons	250	
			SQFT	120592	
			SQFT/TON	482	
				3/8	



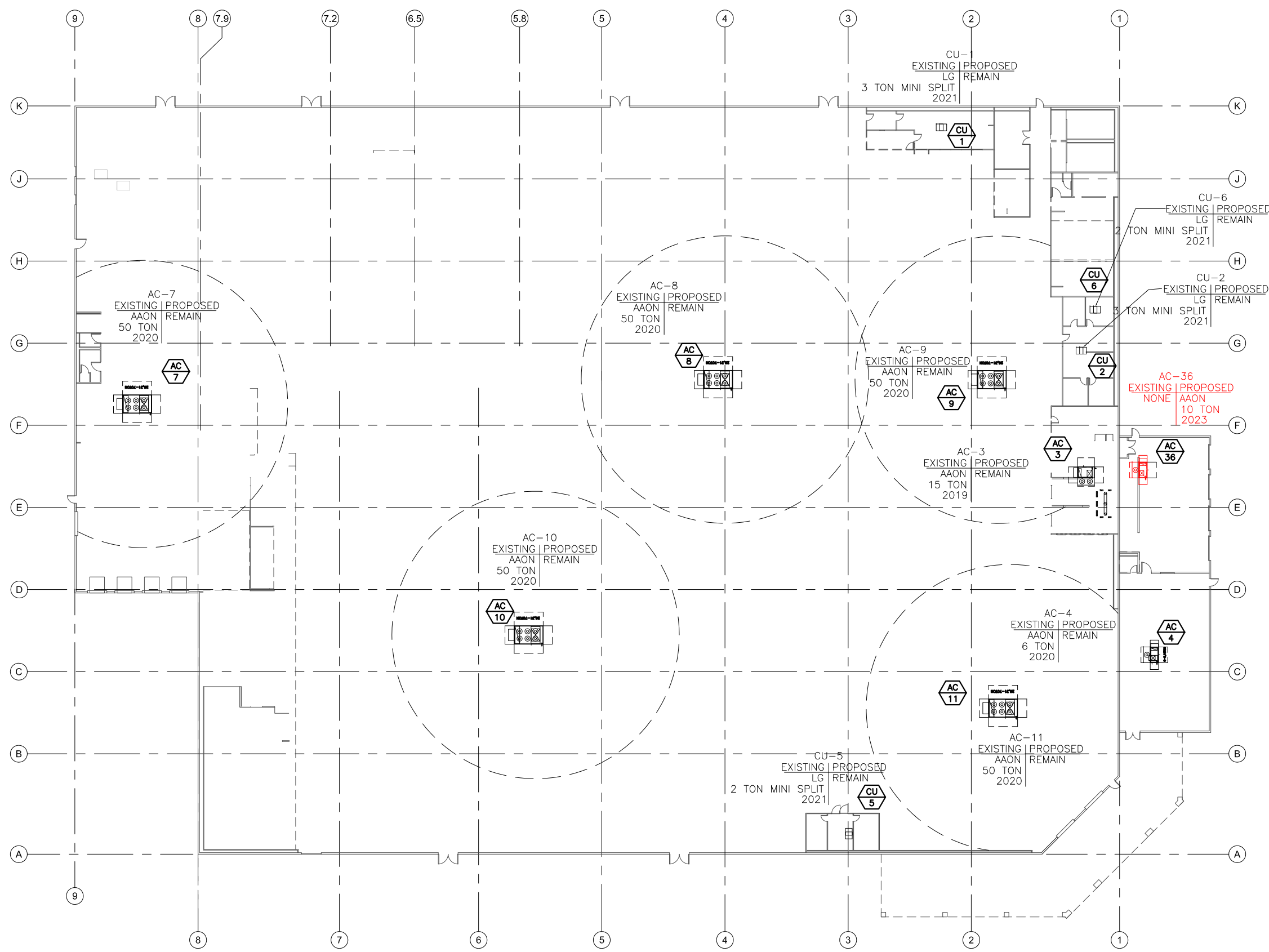
The approved construction plans, documents, and all engineering must be posted on the job at all inspections in a visible and readily accessible location.

Full sized legible color plans are required to be provided by the permittee on site for inspection.

Approval of submitted plans is not an approval of omissions or oversights by this office or non compliance with any applicable regulations of local government. The contractor is responsible for making sure that the building complies with all applicable codes and regulations of the local government.

— EXISTING
— NEW
— FUTURE
— OPTIONAL
— REMOVE

LIGHTING
 FIXTURE TYPE: DIM4EVER
 CONTROLS: ENFLEX



PUYALLUP (#660) - WA - HVAC TIRE INSTALL - RTU LAYOUT 9-12-23

K:\2023\550-559\23-557 - Costco - Puyallup (#660) - WA - HVAC Tire Install\557RTULayout.dwg