

LOCATION: 4227 S Meridian Ste E
Puyallup, Wa 98373

STOREFRONT LENGTH:	N/A
MAX SIGN HEIGHT:	N/A
MAX SIGN LENGTH:	N/A
MAX # SIGNS:	N/A
COLOR VARIANCE:	No
PYLON AVAILABLE:	No
BLADE AVAILABLE:	No
AWNING AVAILABLE:	No
BACKER ALLOWED:	Yes

We propose (1) 38" Face lit Channel letters, (1) 35" Face lit Channel letters, (1) 40" Face lit T logo, and illuminated cabinet D/F panel.

SIGN TYPE	SQ FT (CAL)	SQ FT (PRO)	MATERIAL	COLOR
38" Face lit chnl ltrs on 4" backer	49	48.1	Metal	Black
35" Face lit chnl ltrs on 4" backer	42	40.8	Metal	Black
40" Face lit T Logo on 4" backer	10.5	9.1	Metal	Black
Cabinet D/F Panel		36		

MAX ALLOWED	TOTAL
101.5	98

**City of Puyallup
Planning
Division
APPROVED**

See permit
conditions.

JHulseLaw
04/18/2025
3:26:20 PM

The seal of the City of Puyallup, Washington, is located in the bottom right corner. It is a circular emblem featuring a stylized landscape with a mountain, a river, and trees. The words "CITY OF PUYALLUP" and "STATE OF WASHINGTON" are inscribed around the perimeter of the seal.

Building	Planning
Engineering	Public Works
Fire	Traffic

11-4-24	Initial Brand Book
11-15-24	Revised Brand Book
3-19-25	Revised Brand Book

Full sized legible color plans are required to be provided by the permittee on site for inspection.

Signage Detail



Proposed: Face-Lit Channel Letters

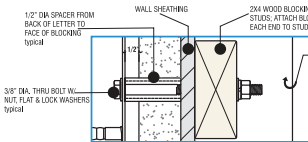
- FACES:** 3/16" thick Clear autogas or equal w/ first surface applied digitally printed Magenta vinyl from Miratec
- TRIMCAP:** 1" Jewelle trimcap painted to match TMO Magenta & White base coat specified (per color palette)
- RETURNS:** .040 aluminum 3" deep painted Black Satin finish
- BACKS:** .063 alum. - pre-finished alum White
- LED:** Principal 6500K White LED's; Remote power supplies

COLOR PALETTE

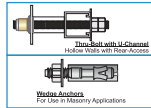
Translucent Miratec Film
30532-1 Magenta printed on
White vinyl
Matthews Magenta
MP86055 R155445
N Semi-glo V1.0
over MP55898 White Basecoat

Black Satin finish / standard
Alum. coil

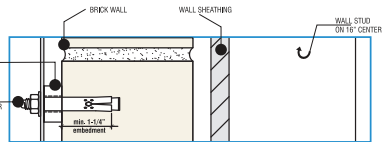
Clear Autogas or Equal



TYPICAL FRAMED WALL MOUNTING DETAIL



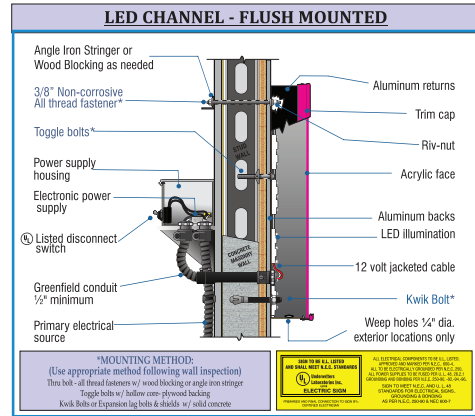
MOUNTING OPTIONS:



TYPICAL BRICK WALL MOUNTING DETAIL

MET BUSHING ANCHOR SYSTEM OR EQUIVALENT
TO BE INSTALLED IN ACCORDANCE WITH
MANUFACTURER'S SPECIFICATIONS

A	B	C	D	SQ. FT.
24"	9'-7-1/4"	4-7/8"	1'-7-3/4"	19.2
25"	9'-11-1/8"	5"	1'-8-1/2"	20.8
26"	10'-4-5/8"	5-1/4"	1'-9-3/8"	22.5
27"	10'-9-1/2"	5-1/2"	1'-9-3/8"	24.3
28"	11'-2-1/4"	5-5/8"	1'-11"	26.1
29"	11'-7"	5-7/8"	1'-11-3/4"	28
30"	11'-11-3/4"	6"	2'-5/8"	29.9
31"	12'-4-1/2"	6-1/4"	2'-1-1/2"	32
32"	12'-9-3/8"	6-1/2"	2'-2-1/4"	34.1
33"	13'-2-1/8"	6-5/8"	2'-3-1/8"	36.2
34"	13'-7"	6-7/8"	2'-3-7/8"	38.5
35"	13'-11-3/4"	7-1/8"	2'-4-3/4"	40.8
36"	14'-4-1/2"	7-1/4"	2'-5-1/2"	43.1
37"	14'-9-3/8"	7-1/2"	2'-6-3/8"	45.6
38"	15'-2-1/4"	7-5/8"	2'-7-1/4"	48.1
39"	15'-7"	7-7/8"	2'-8"	50.6
40"	15'-11-3/4"	8-1/8"	2'-8-3/4"	53.3



COAST SIGN
1500 W. Embassy St. Anaheim, CA 92802 714.520.9144

This is an original unpublished drawing created by Coast Sign, Inc. It is submitted for your personal use in conjunction with a project being planned for you by Coast Sign, Inc., And shall not be reproduced, used by or disclosed to any firm or corporation for any purpose whatsoever without written permission.

T Mobile

ADDRESS
4227 S Meridian Ste E
Puyallup, WA 98373

PAGE #
2

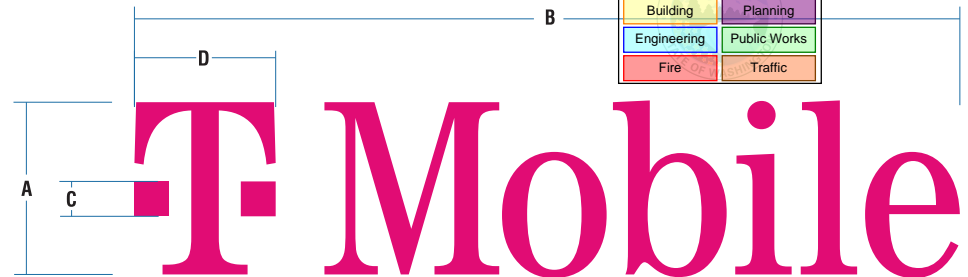
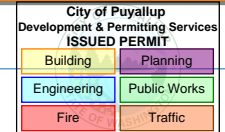
Before



After



Separate Electrical Permit is required with the Washington State Department of Labor & Industries.
<https://lni.wa.gov/licensing-permits/electrical/electrical-permits-fees-and-inspec-tions>
or call for Licensing Information: 1-800-647-0982



CLIENT SIGNATURE	DATE	REVISIONS	
	10-01-2024	DATE:	DESCRIPTION:
	PM	10-09-24	change template
	Marbella Miranda	11-04-24	remove cover page add sign C and D. Paint elevations
	DESIGN	11-11-24	add dimensions for sign A, B and C sing D change size
	Rodel B.	11-13-24	add dimensions for sign A, B, C and D
	FILE NAME	03-17-25	Updated BB as per request
	PRJ-TMBL-191160-R6	03-19-25	Updated BB as per request

Signage Detail

B

Proposed: Face-Lit Channel Letters

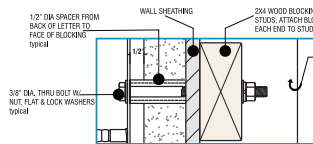
- FACES:** 3/16" thick Clear autoglas or equal w/ first surface applied digitally printed Magenta vinyl from Miratec
- TRIMCAP:** 1" Jewelle trimcap painted to match TMO Magenta & White base coat specified (per color palette)
- RETURNS:** .040 aluminum 3" deep painted Black Satin finish
- BACKS:** .063 alum. - pre-finished alum White
- LED:** Principal 6500K White LED's; Remote power supplies

COLOR PALETTE

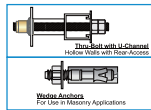
Translucent Miratec Film 30532-1 Magenta printed on White vinyl
Matthews Magenta MP86055 R155445
N Semi-glo V1.0 over MP55898 White Basecoat

Black Satin finish / standard Alum. coil

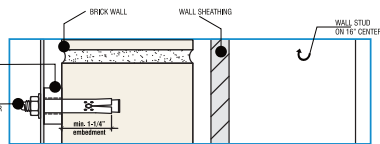
Clear Autoglas or Equal



TYPICAL FRAMED WALL MOUNTING DETAIL



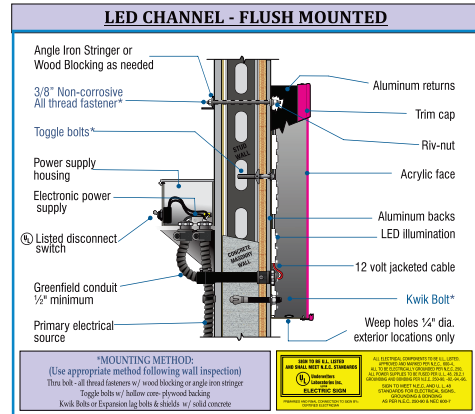
MOUNTING OPTIONS:



TYPICAL BRICK WALL MOUNTING DETAIL

MET SLEEVE ANCHOR SYSTEM OR EQUIVALENT TO BE INSTALLED IN ACCORDANCE WITH MANUFACTURER'S SPECIFICATIONS

A	B	C	D	SQ. FT.
24"	9'-7-1/4"	4-7/8"	1'-7-3/4"	19.2
25"	9'-11-8/8"	5"	1'-8-1/2"	20.8
26"	10'-4-5/8"	5-1/4"	1'-9-3/8"	22.5
27"	10'-9-1/2"	5-1/2"	1'-9-3/8"	24.3
28"	11'-2-1/4"	5-5/8"	1'-11"	26.1
29"	11'-7"	5-7/8"	1'-11-3/4"	28
30"	11'-11-3/4"	6"	2'-5/8"	29.9
31"	12'-4-1/2"	6-1/4"	2'-1-1/2"	32
32"	12'-9-3/8"	6-1/2"	2'-2-1/4"	34.1
33"	13'-2-1/8"	6-5/8"	2'-3-1/8"	36.2
34"	13'-7"	6-7/8"	2'-3-7/8"	38.5
35"	13'-11-3/4"	7-1/8"	2'-4-3/4"	40.8
36"	14'-4-1/2"	7-1/4"	2'-5-1/2"	43.1
37"	14'-9-3/8"	7-1/2"	2'-6-3/8"	45.6
38"	15'-2-1/4"	7-5/8"	2'-7-1/4"	48.1
39"	15'-7"	7-7/8"	2'-8"	50.6
40"	15'-11-3/4"	8-1/8"	2'-8-3/4"	53.3



COAST SIGN
1500 W. Embassy St. Anaheim, CA 92802 714.520.9144

This is an original unpublished drawing created by Coast Sign, Inc. It is submitted for your personal use in conjunction with a project being planned for you by Coast Sign, Inc., And shall not be reproduced, used by or disclosed to any firm or corporation for any purpose whatsoever without written permission.

T Mobile

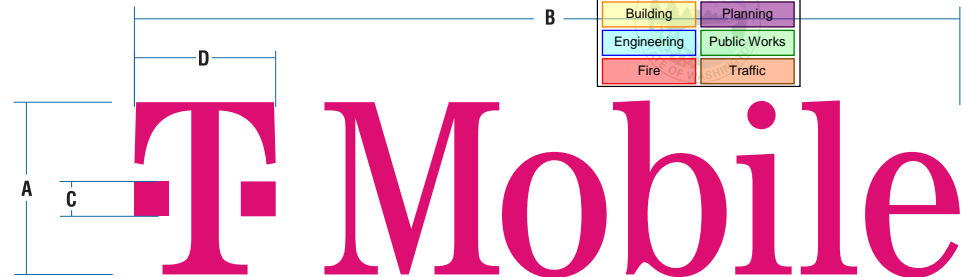
ADDRESS
4227 S Meridian Ste E
Puyallup, WA 98373

PAGE #
3

Before



After



City of Puyallup Development & Permitting Services ISSUED PERMIT			
Building	Planning		
Engineering	Public Works		
Fire	Police	Traffic	

CLIENT SIGNATURE	DATE	REVISIONS	
		DATE:	DESCRIPTION:
	10-01-2024	10-09-24	change template
	PM Marbella Miranda	11-04-24	remove cover page add sign C and D. Paint elevations
	DESIGN Rodel B.	11-11-24	add dimensions for sign A, B and C sing D change size
	FILE NAME PRJ-TMBL-191160-R6	11-13-24	add dimensions for sign A, B, C and D
		03-17-25	Updated BB as per request
		03-19-25	Updated BB as per request

Signage Detail



Proposed: Face-Lit Channel Letters

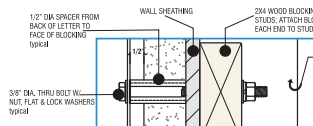
- FACES:** 3/16" thick Clear autoglas or equal w/ first surface applied digitally printed Magenta vinyl from Miratec
- TRIMCAP:** 1" Jewelle trimcap painted to match TMO Magenta & White base coat specified (per color palette)
- RETURNS:** .040 aluminum 3" deep painted Black Satin finish
- BACKS:** .063 alum. - pre-finished alum White
- LED:** Principal 6500K White LED's; Remote power supplies

COLOR PALETTE

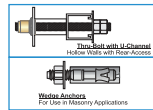
Translucent Miratec Film 30532-1 Magenta printed on White vinyl
Matthews Magenta MP86055 R155445
N Semi-glo V1.0 over MP55898 White Basecoat

Black Satin finish / standard Alum. coil

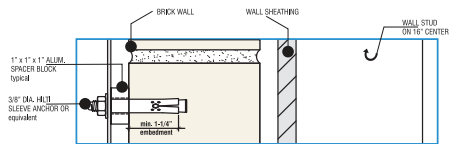
Clear Autoglas or Equal



TYPICAL FRAMED WALL MOUNTING DETAIL



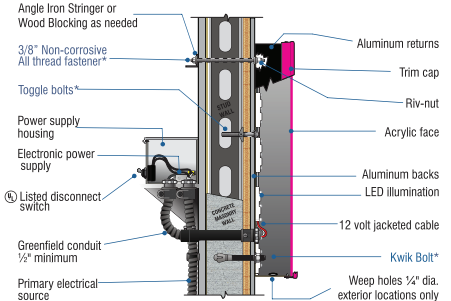
MOUNTING OPTIONS:



TYPICAL BRICK WALL MOUNTING DETAIL

MET-BLEND ANCHOR SYSTEM OR EQUIVALENT TO BE INSTALLED IN ACCORDANCE WITH MANUFACTURER'S SPECIFICATIONS

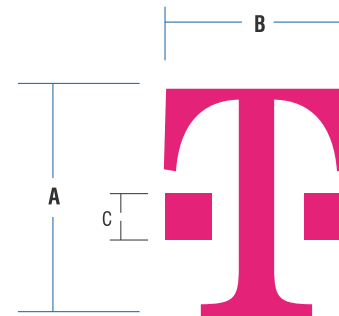
LED CHANNEL - FLUSH MOUNTED



*MOUNTING METHOD:
(Use appropriate method following wall inspection)
Three bolt - all thread fasteners w/ wood blocking or angle iron stringer
Toggle bolts w/ hollow core drywood backing
Kwik Bolt or Expansion lag bolts & shields w/ solid concrete



A	B	C	SQ. FT.
18"	1'-2-3/4"	3-5/8"	1.8
20"	1'-4-1/2"	4"	2.3
22"	1'-6"	4-1/2"	2.8
24"	1'-7-3/4"	4-7/8"	3.3
26"	1'-9-3/8"	5-1/4"	3.9
28"	1'-11"	5-5/8"	4.5
30"	2'-5/8"	6"	5.1
32"	2'-2-1/4"	6-1/2"	5.8
34"	2'-3-7/8"	6-7/8"	7.1
36"	2'-5-1/2"	7-1/4"	7.4
38"	2'-7-1/4"	7-5/8"	8.2
40"	2'-8-3/4"	8-1/8"	9.1
42"	2'-10-1/2"	8-1/2"	10.1
44"	3'-0"	9"	11
46"	3'-1-3/4"	9-3/8"	12.1
48"	3'-3-3/8"	9-3/4"	13.1



City of Puyallup Development & Permitting Services ISSUED PERMIT	
Building	Planning
Engineering	Public Works
Fire	Traffic

COAST SIGN
1500 W. Embassy St. Anaheim, CA 92802 714.520.9144

This is an original unpublished drawing created by Coast Sign, Inc. It is submitted for your personal use in conjunction with a project being planned for you by Coast Sign, Inc., And shall not be reproduced, used by or disclosed to any firm or corporation for any purpose whatsoever without written permission.

T Mobile™

ADDRESS
4227 S Meridian Ste E
Puyallup, WA 98373

PAGE #
4

CLIENT SIGNATURE	DATE	REVISIONS	
	10-01-2024	DATE:	DESCRIPTION:
	PM	10-09-24	change template
	Marbella Miranda	11-04-24	remove cover page add sign C and D. Paint elevations
	DESIGN	11-11-24	add dimensions for sign A, B and C sing D change size
	Rodel B.	11-13-24	add dimensions for sign A, B, C and D
	FILE NAME	03-17-25	Updated BB as per request
	PRJ-TMBL-191160-R6	03-19-25	Updated BB as per request