

WASF: PAVILION ELEV MOD

FIRE ALARM SYSTEM OPERATIONAL MATRIX																
CAUSE	ALARM				TROUBLE				SUPERVISORY				MISCELLANEOUS			
	EFFECT	ALARM AT FACP	ALARM AT ANNUNCIATOR	ALARM AT OFF SITE REPORTING	ACTIVATE ALL AUDIBLES	ACTIVATE VISUALS	TROUBLE AT FACP	TROUBLE AT ANNUNCIATOR	TROUBLE AT OFF SITE REPORTING	SUPERVISORY AT FACP	SUPERVISORY AT ANNUNCIATOR	SUPERVISORY AT OFF SITE REPORTING	DEACTIVATE ALL AUDIBLES	DEACTIVATE VISUALS	SYSTEM NORMAL	REMARKS
SMOKE / HEAT DETECTORS	●	●	●	●	●	●										
MANUAL PULL STATION	●	●	●	●	●	●										
SYSTEM RESET																
SIGNAL SILENCE																
AC POWER FAILURE					●	●	●									
FIRE ALARM TROUBLE (OPEN, SHORTS, OR GROUNDS) ON INITIATION OR SIGNALING CIRCUITS					●	●	●									
TAMPER SWITCHES										●	●	●				
WATERFLOW SWITCH	●	●	●	●	●	●										
1ST FLOOR ELEV LOBBY SMK DET	●	●	●	●	●	●										
2ND FLOOR ELEV LOBBY SMK DET	●	●	●	●	●	●										
ELEV MACHINE ROOM SMK DET	●	●	●	●	●	●										

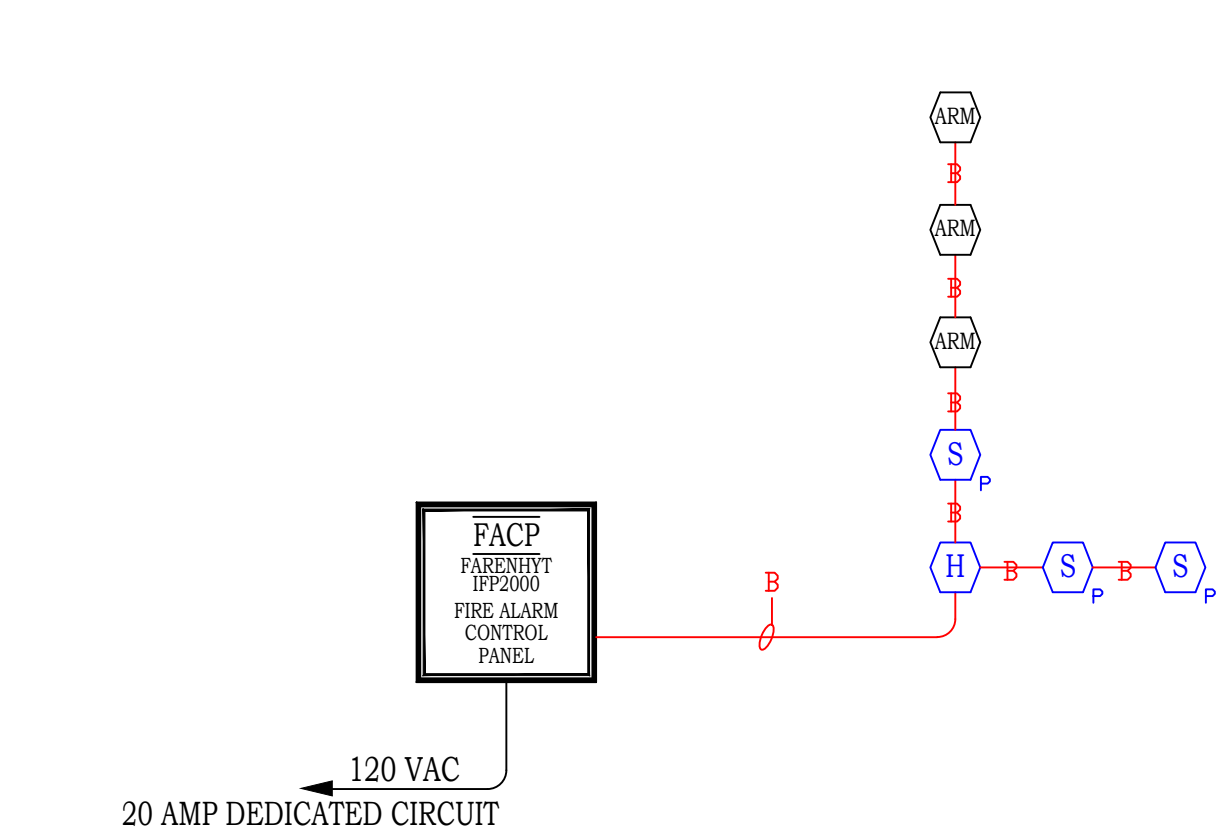
SCOPE OF WORK:

-INSTALL SMK DETS & RECALL RELAYS FOR ELEV MOD.

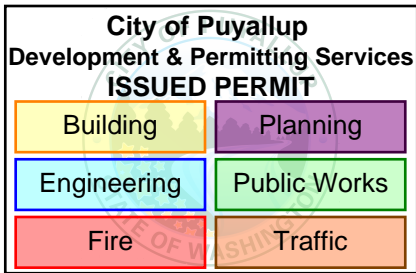
-REMOVE EX. TOP OF SHAFT HEAT DET.

- ### GENERAL NOTES
1. FACTORY RECOMMENDED MINIMUM WIRING SIZES, TYPE AND CONSTRUCTION AS NOTED ON THE DRAWINGS MUST BE STRICTLY FOLLOWED. ANYONE WILLING TO MAKE CHANGES WILL DO SO AT THEIR OWN RISK!!
 2. THE CIRCUIT ROUTING AND WIRING COUNTS ON THE FLOOR PLAN DRAWINGS ARE SHOWN DIAGRAMMATIC BASED ON CONTINUOUS AND SHORTEST POSSIBLE ROUTING FROM THE CONTROL PANEL AND BETWEEN CONNECTED FIELD DEVICES WITH NO PHYSICAL OBSTRUCTIONS. THE WIRING OR CIRCUIT COUNTS (IF SHOWN) ARE PROVIDED AS A CONVENIENCE ONLY AND AS MEANS TO HASTEN INSTALLATION OR TO DETERMINE WIRING ROUTES.
 3. WIRE SHOWN IN THIS DRAWING SET IS PERMITTED IN RACEWAYS LEADING TO FIRE PROTECTION EQUIPMENT. OTHER WIRE SHALL NOT BE PERMITTED.
 4. PER 2019 NFPA 72, SECTION 17.7.1.11.3: WHERE DETECTION IS NOT REQUIRED DURING CONSTRUCTION, DETECTORS SHALL NOT BE INSTALLED UNTIL AFTER ALL OTHER CONSTRUCTION TRADES HAVE COMPLETED CLEANUP.
 5. FIRE ALARM SYSTEM INSTALLATION SHALL CONFORM WITH THE LATEST U.L., N.E.C., 2019 N.F.P.A., W.A.C., AND OTHER STANDARDS AS APPLICABLE TO THE CITY STANDARDS.
 6. WHEN NECESSARY, DUE TO CHANGING DESIGN REQUIREMENTS, FACTORY AVAILABILITY, ETC. WE RESERVE THE RIGHT TO SUBSTITUTE EQUIPMENT HEREIN MENTIONED OR SPECIFIED, WITH EQUIPMENT OF EQUAL OR BETTER QUALITY, FUNCTION AND DESIGN.
 7. PARALLEL BRANCHING OF WIRE TO ALL NOTIFICATION APPLIANCE CIRCUITS SHALL NOT BE PERMITTED.
 8. PARALLEL BRANCHING OF WIRE TO ADDRESSABLE INITIATING DEVICE CIRCUITS IS PERMISSIBLE.
 9. PER NFPA 72 (2019), SECTION 29.8.3.4(7); SMOKE ALARMS AND SMOKE DETECTORS SHALL NOT BE INSTALLED WITHIN A 36IN. (910MM) HORIZONTAL PATH FROM THE SUPPLY REGISTERS OF A FORCED AIR HEATING OR COOLING SYSTEM AND SHALL BE INSTALLED OUTSIDE OF THE DIRECT AIRFLOW FROM THOSE REGISTERS.
 10. SMOKE ALARMS AND CO-DETECTION WILL BE INSTALLED BY ELECTRICAL CONTRACTOR.
 11. THE AUDIBLE ALARM NOTIFICATION APPLIANCES SHALL PROVIDE A SOUND PRESSURE LEVEL OF 15 DECIBELS (dBA) ABOVE THE AVERAGE AMBIENT SOUND LEVEL OR 5 dBA ABOVE THE MAXIMUM SOUND LEVEL HAVING A DURATION OF NOT LESS THAN 60 SECONDS, WHICHEVER IS GREATER, IN EVERY OCCUPIABLE SPACE WITHIN THE BUILDING. IN COMPLIANCE WITH CURRENT IFC AND NFPA 72 (2019) CODES.

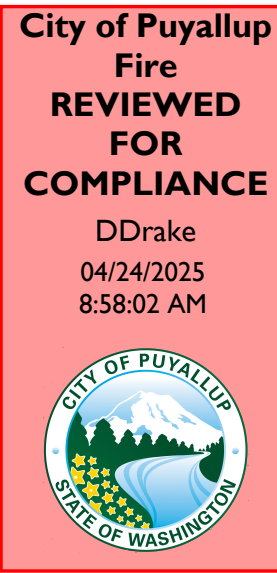
FIRE ALARM DEVICE LEGEND						
SYMBOL	QTY	DESCRIPTION	MODEL NUMBER	MANUFACTURER	BACKBOX	MOUNTING HEIGHT
	EX	FIRE ALARM CONTROL PANEL	IFP2000	FARENHYT	EX	EX
	EX	HEAT DETECTOR	SD505-AHS	FARENHYT	4S BOX W/ S/G MUDRING	CEILING
	3	PHOTO SMOKE	SD505-APS	FARENHYT	4S BOX W/ S/G MUDRING	CEILING
	3	ADDRESSABLE RELAY MODULE	SD500-ARM	FARENHYT	4S BOX	VERIFY IN FIELD



FIRE ALARM RISER



Read Permit Conditions prior to calling for inspection. Subject to field inspection. Project may not be able to be approved based on an L&i inspection. L&i Final required prior to Fire Final.



THE APPROVED CONSTRUCTION PLANS AND ALL ENGINEERING MUST BE POSTED ON THE JOB AT ALL INSPECTIONS IN A VISIBLE AND READILY ACCESSIBLE LOCATION.

Approval of submitted plans is not an approval of omissions or oversight by this office or noncompliance with any applicable regulations of local government. The contractor is responsible for making sure that the building complies with all applicable building codes and regulations of the local government.



JULES MAYER, SET
NICET #130993
FIRE ALARM SYSTEMS. LEVEL IV

THE CIRCUIT ROUTING AND WIRING COUNTS ON THE FLOOR PLAN DRAWINGS ARE SHOWN DIAGRAMMATIC BASED ON CONTINUOUS AND SHORTEST POSSIBLE ROUTING FROM THE CONTROL PANEL AND BETWEEN CONNECTED FIELD DEVICES WITH NO PHYSICAL OBSTRUCTIONS. THE WIRING OR CIRCUIT COUNTS (IF SHOWN) ARE PROVIDED AS A CONVENIENCE ONLY AND AS MEANS TO HASTEN INSTALLATION OR TO DETERMINE WIRING ROUTES. ALL FIRE ALARM WIRING CAN BE RAN IN SAME CONDUIT.

SHEET
FA-1
OF
FA-2

WA STATE FAIR PAVILION ELEV MOD
110 9TH AVE SW
PUYALLUP WA 98371
FIRE ALARM PLANS (RISER PLAN)

Western States Fire Protection Company
1800 NORTH COLUMBIAN AVENUE, SUITE 100, PUYALLUP, WA 98371
LIC. # WESTERSPR7/ULI CERTIFICATION # 52041

ESTABLISHED 1978 BY THE PROFESSIONAL ENGINEERING SOCIETY OF WASHINGTON
A NATIONAL ASSOCIATION OF PROFESSIONAL ENGINEERS
FOR LOCAL JURISDICTIONS: PUYALLUP, WASHINGTON
PHONE: 425-881-0700 FAX: 425-881-5030

NO.	REVISIONS	DATE	BY	CHK
0	ISSUED FOR REVIEW	03/27/25	JFM	CC

SYMBOL	CIRCUIT TYPE	TYPE	JACKET	COND.	GAUGE
A	NOTIFICATION	FRP	RED PVC	2	14
B	SIGNALING LINE CIRCUIT DATA	FRP	RED PVC	2	16
C	AUX POWER (AUXO)	FRP	RED PVC	2	16
D	ANNUNCIATOR CIRCUIT	FRP	RED PVC	4	16

LEGEND

FACP

FIRE ALARM CONTROL PANEL

TOP 72" AFF

NAC#

NOTIFICATION CKT POWER BOOSTER

TOP 72" AFF

FAA

FIRE ALARM ANNUNCIATOR

TOP 66" AFF

FADC

FIRE ALARM DOCUMENT BOX

TOP 72" AFF

FATC

FIRE ALARM TERMINAL CABINET

N/A

CELL

CELLULAR COMMUNICATOR

N/A

HC

HORN/STROBE

80"-96" AFF

HC

CEILING HORN/STROBE

N/A

HC

STROBE

80"-96" AFF

HC

CEILING STROBE

N/A

HC

SMOKE DETECTOR PHOTO TYPE

N/A

H

HEAT DETECTOR THERMAL TYPE

N/A

S

DUCT DETECTOR

N/A

RTS

REMOTE TEST/RESET SW.

N/A

P

MANUAL PULL STATION

42"-48" AFF

AIM

ADDRESSABLE INPUT MON. MODULE

N/A

ARM

ADDRESSABLE RELAY MODULE

N/A

ADM

ADDRESSABLE CONTROL MODULE

N/A

IM

ISOLATION MODULE

N/A

RI

NON-ADDRESSABLE RELAY

N/A

MT

MOTORIZED FIRE/SMOKE DMPR

N/A

VS

SPRINKLER VALVE SUPV. SW.

N/A

WFS

WET SPRINKLER WATERFLOW SW.

N/A

PS

DRY SPRINKLER PRESSURE SW.

N/A

DH

MAGNETIC DOOR HOLDER

N/A

EDL

END OF LINE RESISTOR

VP

WEATHERPROOF

EX

EXISTING

AFF

ABOVE FINISHED FLOOR

TOP

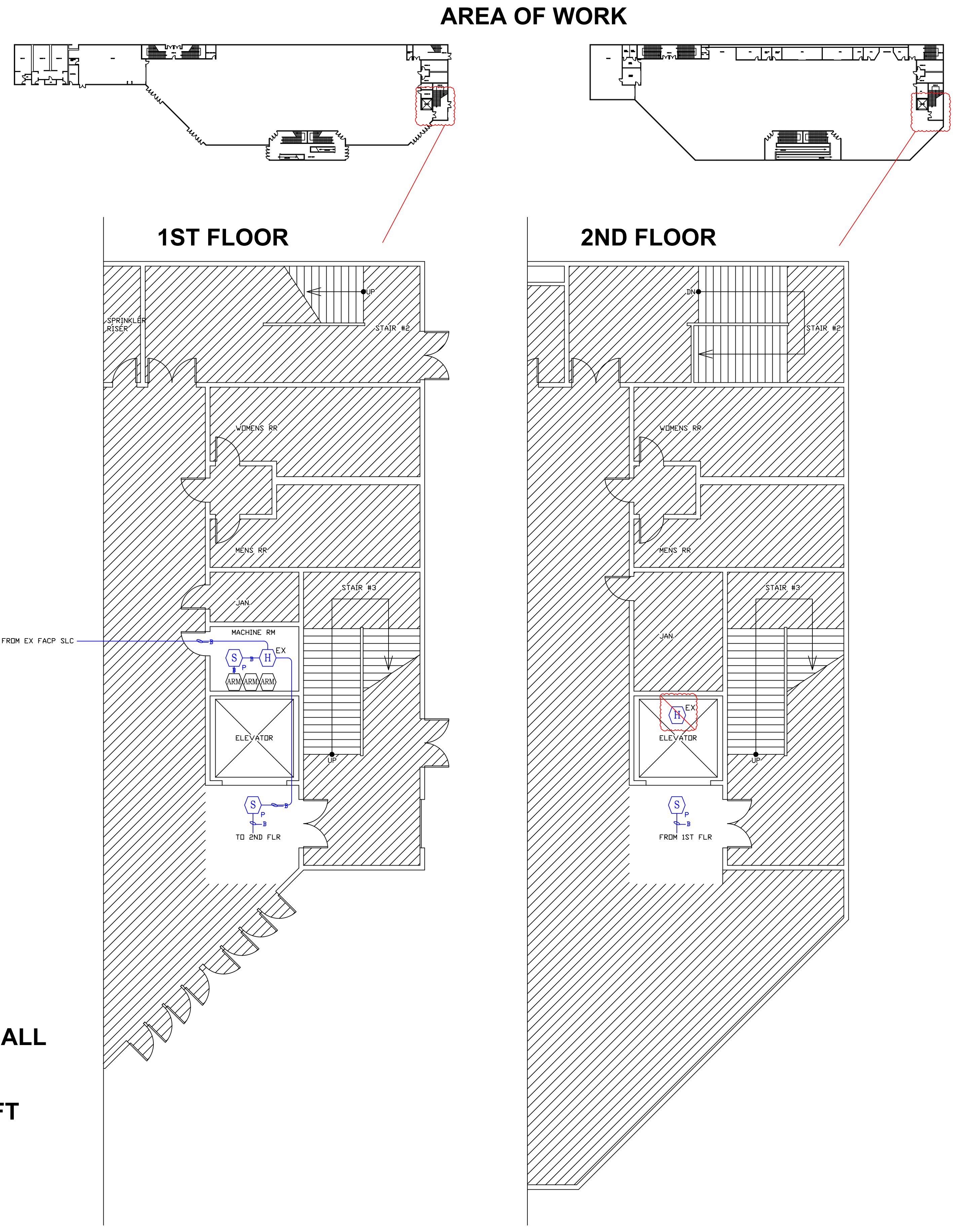
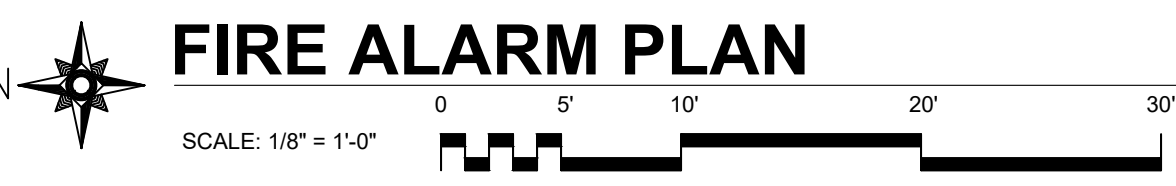
TOP OF PANEL

Stroke coverage areas shall be defined as:
10 FT. CLS. HT. 20 FT. CLS. HT. 30 FT. CLS. HT.
15' cl = 20'x20' 20' cl = 20'x20' 25' cl = 20'x20'
30' cl = 30'x30' 35' cl = 30'x30' 40' cl = 30'x30'
45' cl = 40'x40' 50' cl = 40'x40' 55' cl = 40'x40'
60' cl = 50'x50' 65' cl = 50'x50' 70' cl = 50'x50'
75' cl = 50'x50' 80' cl = 50'x50' 85' cl = 50'x50'
90' cl = 50'x50' 95' cl = 50'x50' 100' cl = 50'x50'

SCOPE OF WORK:

-INSTALL SMK DETS & RECALL RELAYS FOR ELEV MOD.

-REMOVE EX. TOP OF SHAFT HEAT DET.



City of Puyallup

Development & Permitting Services

ISSUED PERMIT

Building

Planning

Engineering

Public Works

Fire

Traffic

SHEET

FA-2

OF

FA-2

WA STATE FAIR PAVILION ELEV MOD

110 9TH AVE SW

PUYALLUP WA 98371

FIRE ALARM PLANS (FLOOR PLAN)

Western States Fire Protection Company

1800 NORTH COLUMBIAN BLVD SUITE 400 PUYALLUP WA 98371

LIC # WESTESP007 / U.I. CERTIFICATION # ES0941

WESTERN STATES FIRE PROTECTION COMPANY OFFICE LOCATION:
1800 NORTH COLUMBIAN BLVD SUITE 400 PUYALLUP WA 98371
LAS VEGAS BRANCH: 1800 NORTH COLUMBIAN BLVD SUITE 400 PUYALLUP WA 98371
PHONE: 425-881-0100 FAX: 425-881-0000

JULES MAYER, SET

NICET #130993

FIRE ALARM SYSTEMS, LEVEL IV

THE CIRCUIT ROUTING AND WIRING COUNTS ON THE FLOOR PLAN DRAWINGS ARE SHOWN DIAGRAMMATICALLY BASED ON CONTINUOUS AND SHORTEST POSSIBLE ROUTING FROM THE CONTROL PANEL AND BETWEEN CONNECTED FIELD DEVICES WITH NO PHYSICAL OBSTRUCTIONS. THE WIRING OR CIRCUIT COUNTS (IF SHOWN) ARE PROVIDED AS A CONVENIENCE ONLY AND AS MEANS TO HASTEN INSTALLATION OR TO DETERMINE WIRING ROUTS. ALL FIRE ALARM WIRING CAN BE RUN IN SAME CONDUIT.