

CENTERIS SOUTH YARD

FAS SYSTEM ADDITION

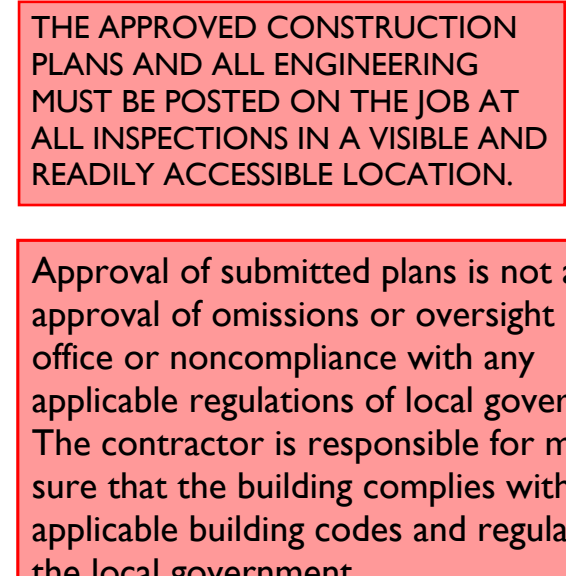
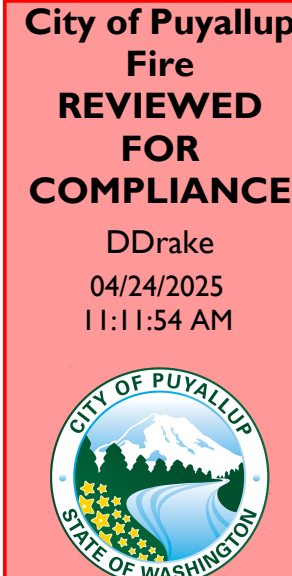
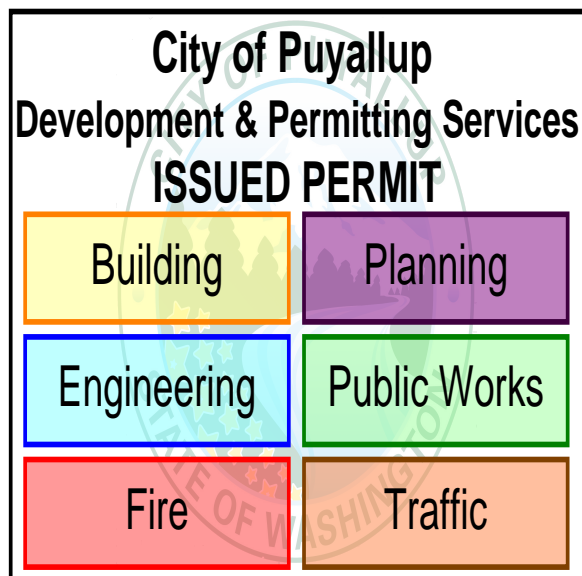
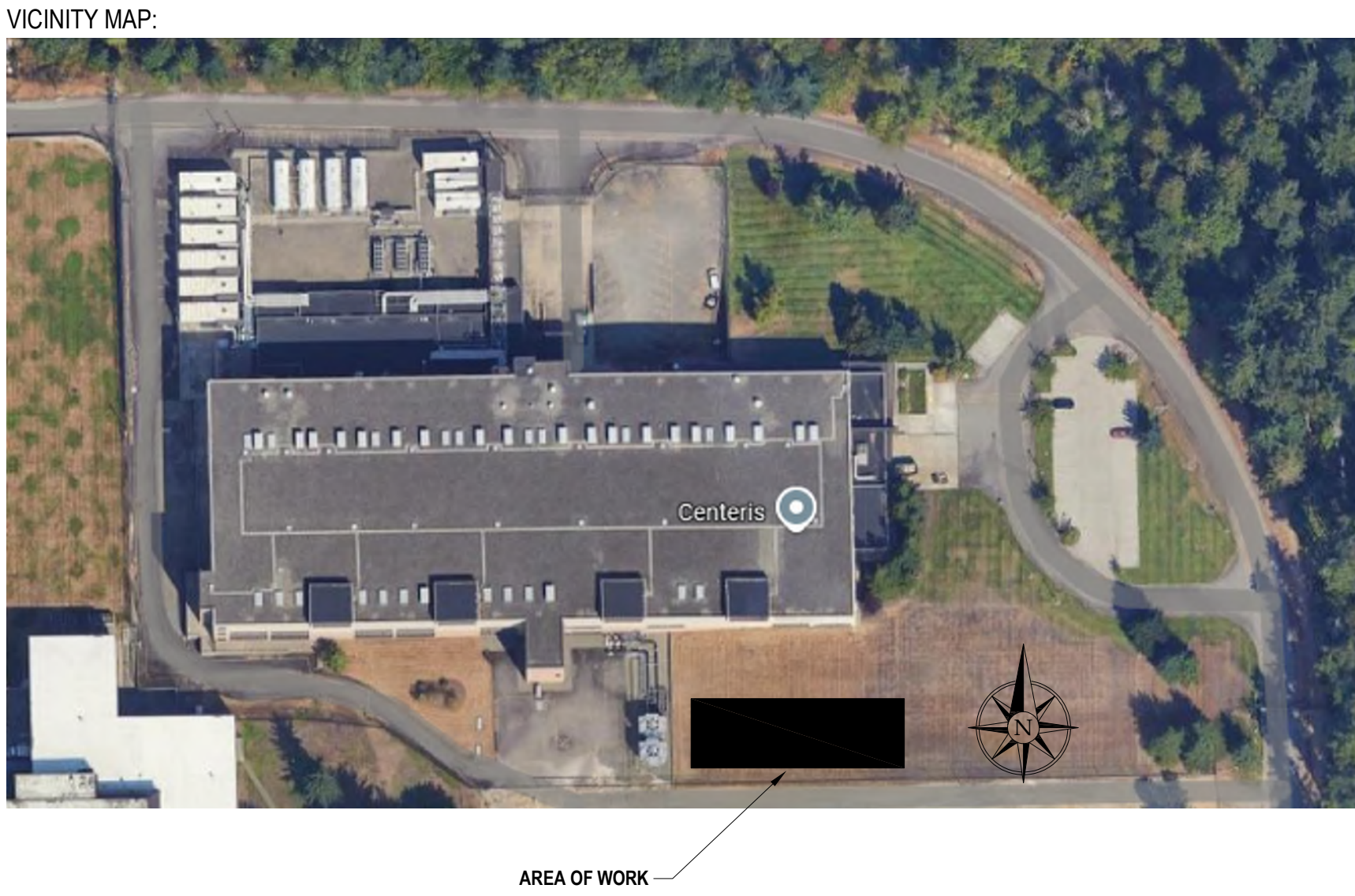
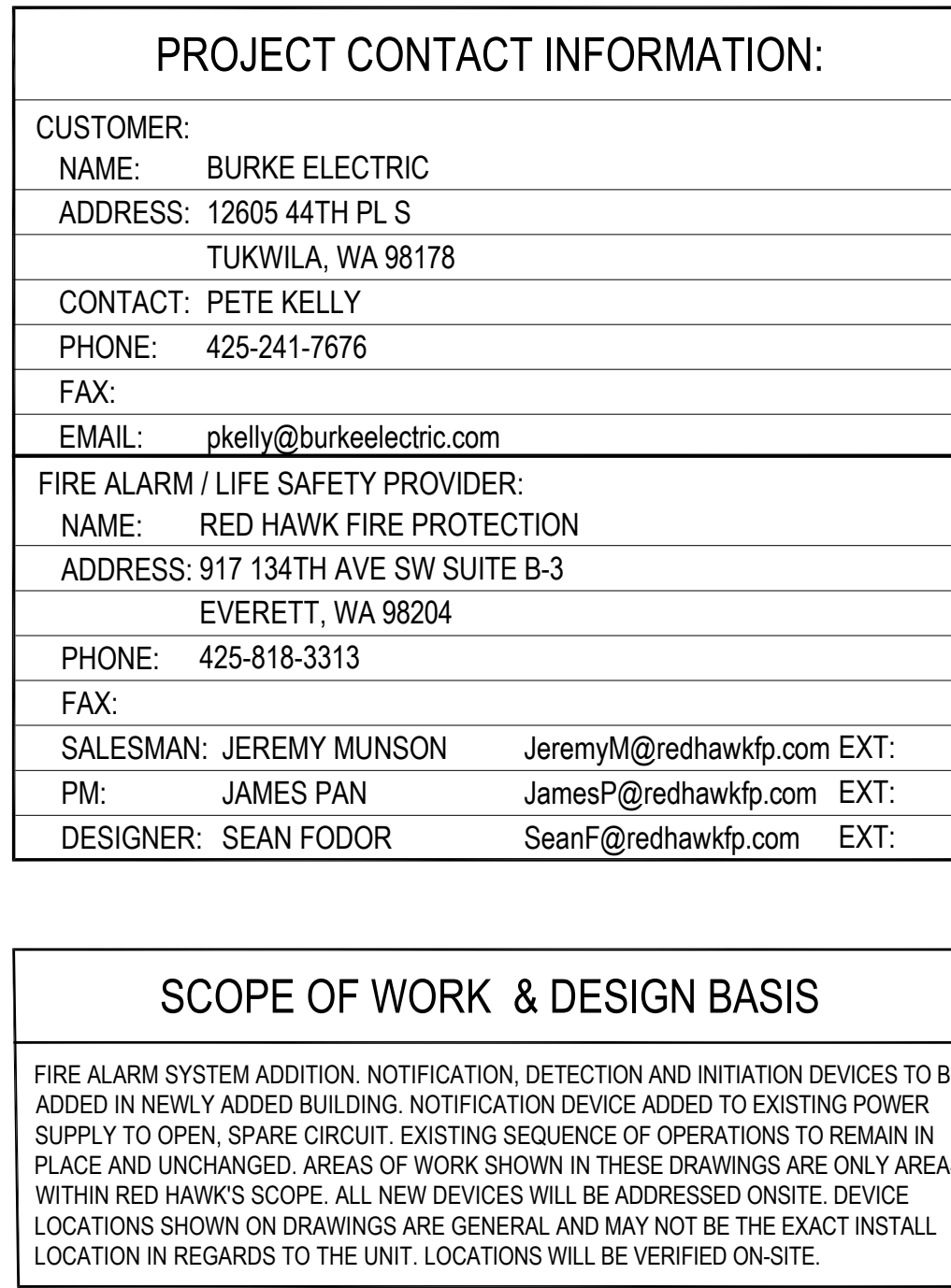
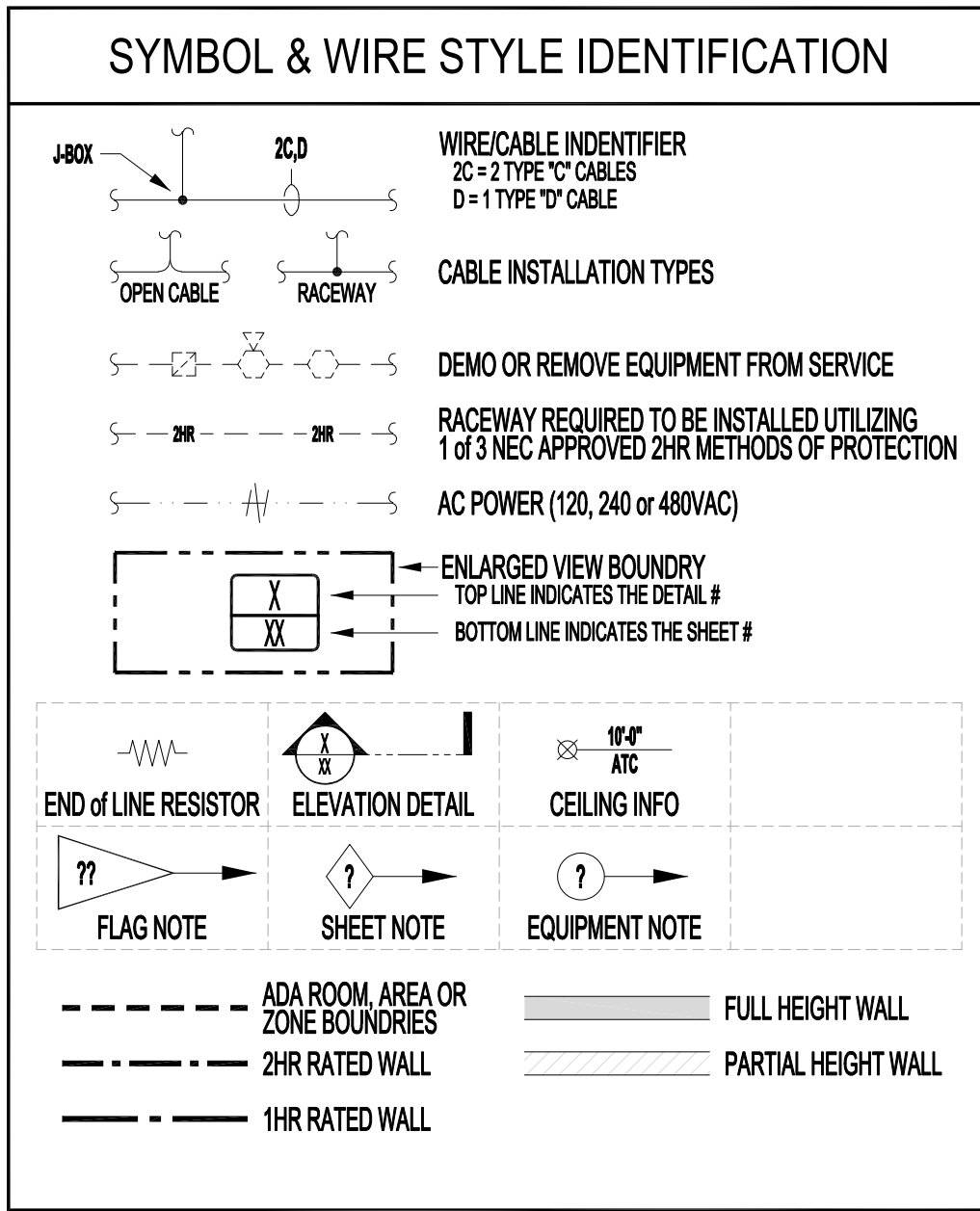
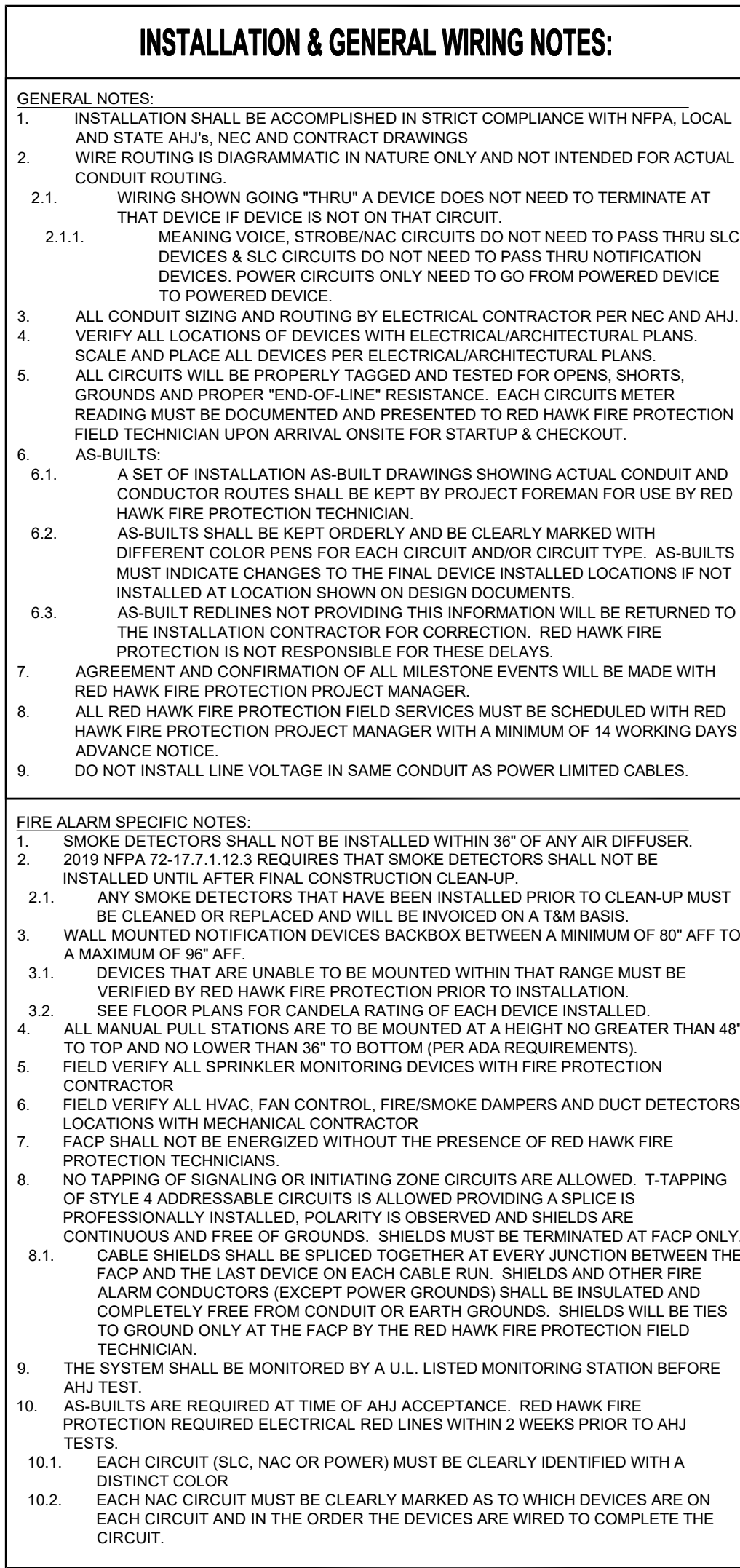
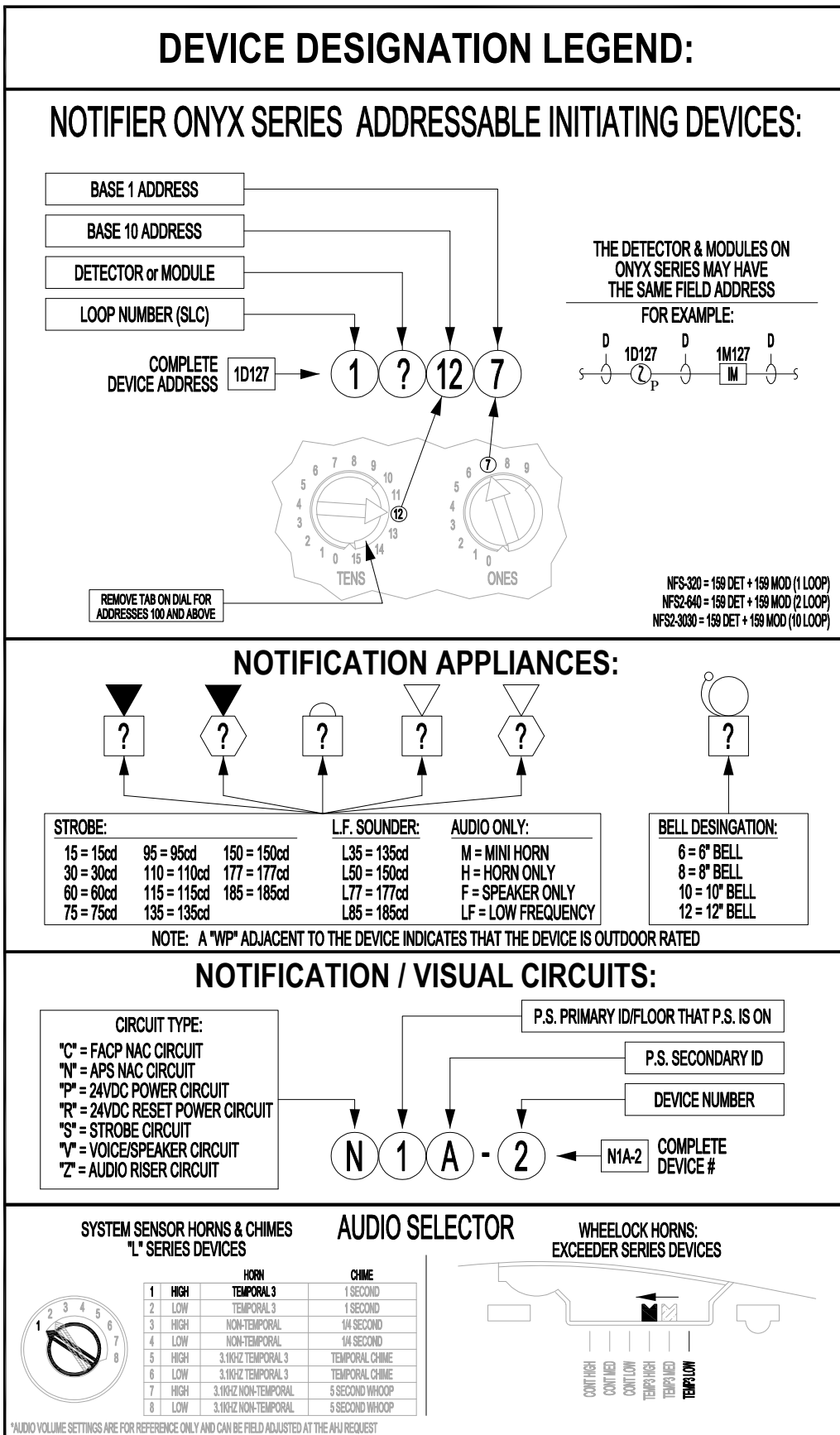
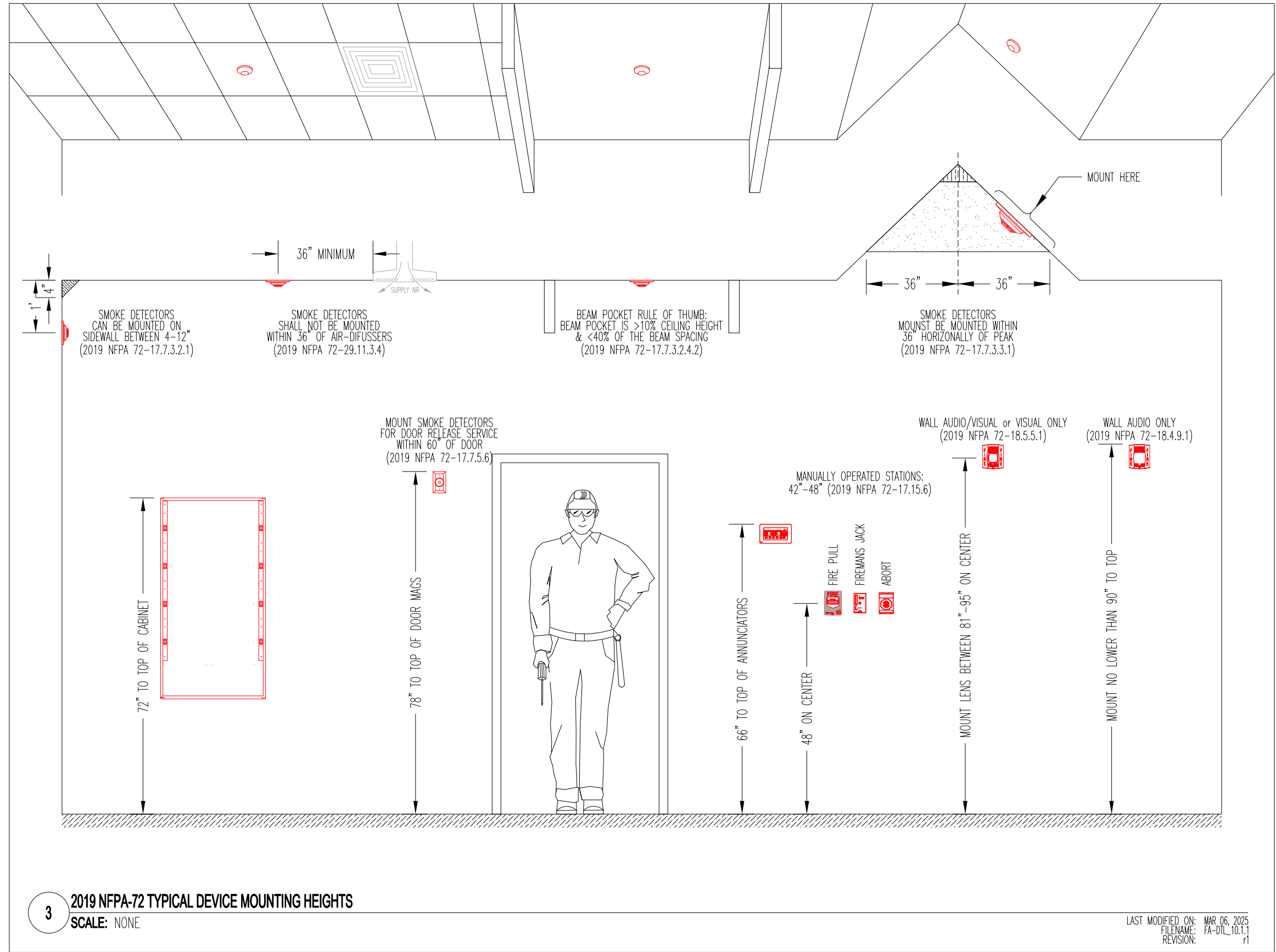
1023 39TH AVENUE SE, PUYALLUP, WA 98374

SYMBOL LEGEND					
SYMBOL	QTY	DESCRIPTION	MOUNTING REQUIREMENTS	SUPPLIER	PART NUMBER
	2	INTELLIGENT PHOTO SMOKE DETECTOR	4 SQUARE DEEP w/ 3" ROUND RING; MOUNTED 3" FROM PEAK OF SLOPE CEILING	NOTIFIER	FSP-951 w/ B300-6
	2	INTELLIGENT MANUAL PULL STATION	4 SQUARE DEEP w/ 1 GANG RING; MOUNTED AT 48" TO TOP IF PLANS NOTE FOR WIRE GUARD (COVER) USE STI-130	NOTIFIER	NBG-12LX
	1	SLC ISOLATION MODULE	4 SQUARE DEEP	NOTIFIER	ISO-X
	1	24VDC SURGE SUPPRESSOR; 2PR, 14-30VDC, 16-22AWG	4 SQUARE DEEP	DITEK	DTK-2MHL24FWB
	1	CEILING HORN w/ STROBE: WHITE SEE DEVICE DESIGNATION FOR STROBE cd SETTING	4 SQUARE DEEP; CENTER ON CEILING TILE (IF APPLICABLE)	SYSTEM SENSOR	PC2WLED
NOTES: 1- DEVICE SUBSCRIPT: N=NEW R=REMOVE & RELOCATE EX=EXISTING TO REMAIN AC=ABOVE CEILING RB=RELAY BASE WP=WATERPROOF WG=WIRE GUARD ISO=ISO BASE 2- CABLING SHOWN IS FOR CIRCUIT REFERENCE ONLY AND DOES NOT INTENDED TO INDICATE THE EXACT PATHWAY. 3- DEVICES SHOWN ON DRAWINGS IN GRAY SCALE ARE EXISTING DEVICES AND MAY NOT BE INCLUDED IN THIS SYMBOL LEGEND UNLESS NOTED. 4- HORN/STROBE (IF APPLICABLE) DECIBLE SETTING TO BE DETERMINED ON SITE, UNLESS OTHERWISE NOTED ON THE DRAWINGS. CAN BE HELD ADJUSTED AT REQUEST OF AHJ. 5- ALL DEVICES WITH A WP SUBSCRIPT WILL REQUIRE THE USE OF A OUTDOOR OR WP BACKBOX. 6- ALL SPEAKERS (IF APPLICABLE) TO BE TAPPED AT 1/4 WATT UNLESS OTHERWISE SPECIFIED ON THE FAS PLANS.					

WIRE LEGEND							
SYMBOL	DESCRIPTION	THHN	FPL	FPLP	WET	COLOR CODING	CIRCUIT TYPE
C	1 PAIR 14AWG FIRE RATED CABLE	YES	972	60993B	AQ226		AUDIBLE (NAC) CIRCUIT
D	1 PAIR 16AWG FIRE RATED CABLE	---	971	60991B	AQ225		DATA (SLC) CIRCUIT
NOTES: ** DIFFERENT COLORS/STRIPE COMBINATIONS TO BE USED FOR DIFFERENT CIRCUIT TYPES. LABEL ALL CIRCUITS ACCORDINGLY 1- WIRE MANUFACTURER IS FOR REFERENCE PURPOSE ONLY. WHEN USING OTHER MANUFACTURE, ENSURE PROPER CROSS REFERENCE 2- FPLP CAN BE USED IN MOST ALL APPLICATIONS WITH THE EXCLUSION OF WET AND CIRCUIT INTEGRITY REQUIREMENTS 3- INSTALL WIRING PER NEC. USE CABLE TYPE CONSISTENT WITH NEC REQUIREMENTS, I.E. PLENUM, RISER, UNDERGROUND, ETC. 4- THE "F" FIBER OPTIC CABLE LISTED IS A BELDEN CABLE PART NUMBER AS WEST PENN NO LONGER SUPPORTS FIBER OPTIC CABLE 5- THIS CABLE MUST BE INSTALLED IN A CONTINUOUS PATH POINT-TO-POINT. ABSOLUTELY NO SPLICES ARE ALLOWED. 6- THIS IS A SPECIFIC CABLE, NO ALTERNATES ARE ALLOWED							

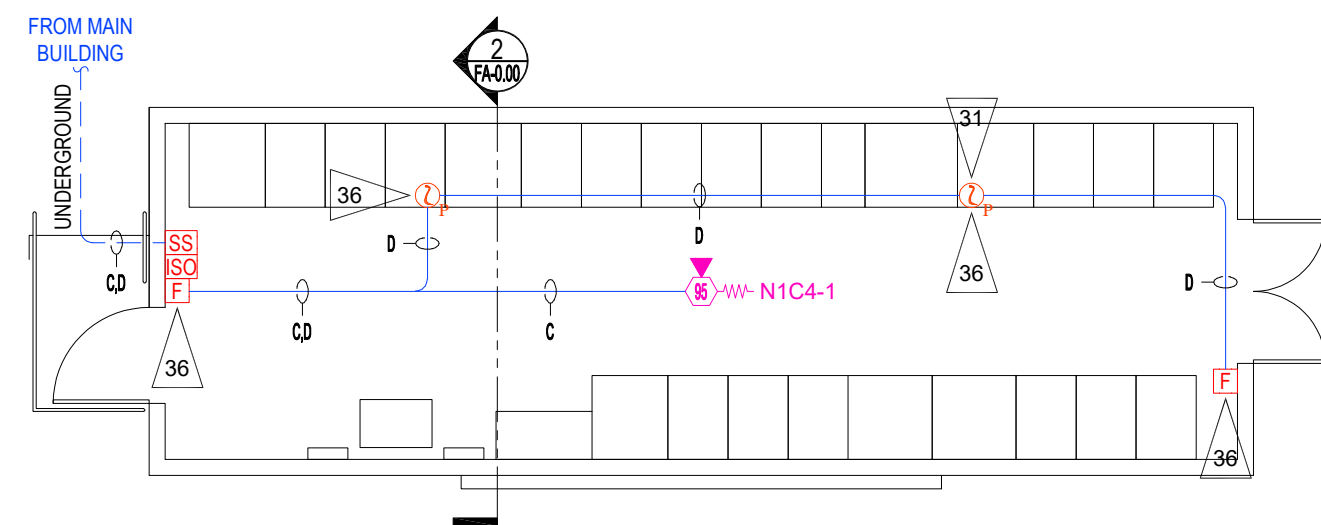
FLAGNOTES	
NOTE #	DESCRIPTION
31	MOUNT AREA SMOKE DETECTOR ON CEILING WITHIN 36" HORIZONTALLY OF SLOPED CEILING PEAK.
36	DEVICE ADDRESS ARE TO BE ASSIGNED BY FA CONTRACTOR & SET BY ELECTRICIAN FIELD TECHNICIAN ONCE ON-SITE

NAC Circuit Load, Voltage Drop & Battery Load Calculations													
APS-1C (EXISTING)													APS-1C (EXISTING)
APS Name:	MDP-102	Standby:	0.0910	Alarm:	0.1450	Circuit Identifiers:							
Location:	MDP-102	WAC Sync:	N1C1	NAC Sync:	N1C2	NAC Sync:	N1C3	NAC Sync:	N1C4	Output #5:	Output #6:	Output #7:	Aux Power:
P.S. Type:	FOPS-3458	Description:	14AWG	14AWG	14AWG	14AWG	14AWG	14AWG	14AWG	14AWG	14AWG	14AWG	14AWG
Part #:	PC2WLED (95)	Ceiling Horn w/ Strobe set at 95cd	0.0000	0.0920	0.0000	0.0000	0.0000	0.0000	0.0000	0.0000	0.0000	0.0000	0.0000
Existing Circuit Measured Load (Amps):													
# Devices per Circuit:													
Total Standby Circuit Calculated Amps (3):													
Total Alarm Circuit Calculated Amps (1):													
Wire Gauge Used (awg):													
Circuit Length (ft):													
Estimated Voltage Drop (dc):													
Estimated EOL Voltage (dc):													
Calculated Voltage Drop %:													
1) Current Draw Measurement based on: UL1971, 16-33V, DC, High db & Temporal Pattern 2) Some Outdoor/WP Devices have the same Measured Current Draw as the Indoor Devices and may not listed separately above. 3) When the APS is configured for "Doors", Output #4 shutdown on loss of AC Power. Therefore no "Standby" Current Draw is shown													
BATTERY LOAD CALC FOR APS-1C (EXISTING):													
NAC P.S. Max Rating: 8.000 Total Amps Required: 2.072 % Used: 26%													
Hours Standby: 24 Total Standby Current: 0.0910 Total Hours Required for Standby (AH): 2.18													
Minutes Alarm: 5 Total Alarm Current: 2.2170 Total Hours Required for Alarm (AH): 0.18													
Backup Generator? Unknown Minimum Battery Size Needed (AH): 2.37													
Voice Evacuation? No Spare Battery Capacity Required: 0.59													
Military? No Actual Battery Size Required (AH): 2.96													
MAXIMUM CHARGER CAPACITY IS: 16AH Total AH Rated Batteries Supplied: 7.0													



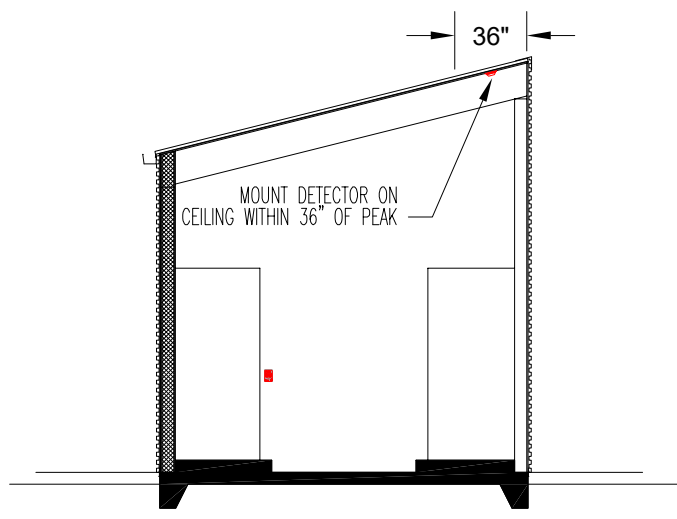
1 SOUTH YARD ELECTRICAL ROOM - FAS LAYOUT

SCALE: 1/8" = 1'-0"



2 EAST SECTION VIEW

SCALE: NOT TO SCALE



SCALE: 1/8" = 1'-0"
16 8 6 4 2 0



Approvals Required

Revisions			
ISSUE	DATE	BY	DESCRIPTION
1	03/24/2025	SDF	PERMIT SUBMITTAL SET

Contract With

BURKE ELECTRIC

12605 44TH PL S
TUKWILA, WA 98178

Contract Name

CENTERIS SOUTH
YARD

1023 39TH AVENUE SE
PUYALLUP, WA 98374

FAS SYSTEM ADDITION

Sheet Title

PROJECT INFO,
DETAILS, CALCS
& FAS LAYOUT
FLOOR PLAN

Key Plan

Date: 03/24/2025
Job Number: 390057
Designer: SEAN D. FODOR
Building Permit:

Sheet Number

FA-0.00
SHEET 1 OF 1