

**PEAD-A42AA7 & PUZ-A42NKA7
MID STATIC HORIZONTAL-DUCTED INDOOR UNIT
42,000 BTU/H HEAT PUMP UNIVERSAL OUTDOOR**



Job Name:

System Reference:

Date:

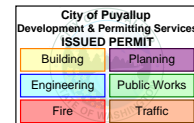


Indoor Unit.....PEAD-A42AA7

Outdoor Unit.....PUZ-A42NKA7

PRMH20250492

Full-Sized legible color report must be on site and made available by the Permittee for all inspections.



INDOOR UNIT FEATURES

- Unobtrusive ceiling-concealed design for short-run ductwork
- Wide ranging external static pressure (0.14-0.60 in. WG)
- Built-in condensate lift mechanism (up to 27-9/16")
- Auto fan speed mode
- Optional FB Series filter boxes for easy access and service
- Ideal for residential homes, retail shopping centers, larger classrooms, office complexes, conference rooms, ballrooms, fitness centers, and more
- Multiple control options available:
 - kumo cloud® smart device app for remote access
 - Third-party interface options
 - Wired or wireless controllers

OUTDOOR UNIT FEATURES

- Variable speed **INVERTER**-driven compressor
- Pre-charged with refrigerant volume for piping length up to 100 ft
- Low ambient cooling down to 0°F providing 100% capacity
- 24-hour continuous operation (cooling mode)
- High pressure protection
- Fast restart
- Superior energy and operational efficiency
- Seacoast protection*
 - External Outer Panel: Phosphate coating + Acrylic-Enamel coating
 - Fan Motor Support: Epoxy resin coating (at edge face)
 - Separator Assembly Valve Bed: Epoxy resin coating (at edge face)
 - Blue Fin treatment is an anti-corrosion treatment that is applied to the Heat exchanger coil to protect it against airborne contaminants.
 - Heat exchanger coil and base panel rated for 2,000 hours in accordance with ASTM B117 testing

*Seacoast protection standard from 2022 production

SPECIFICATIONS: PEAD-A42AA7 & PUZ-A42NKA7

Cooling at 95°F ¹	Maximum Capacity	BTU/H	42,000
	Rated Capacity	BTU/H	42,000
	Minimum Capacity	BTU/H	16,000
	Maximum Power Input	W	3,920
	Rated Power Input	W	3,920
	Moisture Removal	Pints/h	9.0
	Sensible Heat Factor		0.760
	Power Factor [208V / 230V]	%	93.6 / 93.6
Heating at 47°F ²	Maximum Capacity	BTU/H	48,000
	Rated Capacity	BTU/H	45,000
	Minimum Capacity	BTU/H	18,100
	Maximum Power Input	W	3,700
	Rated Power Input	W	3,290
	Power Factor [208V / 230V]	%	92.9 / 92.9
Heating at 17°F ³	Maximum Capacity	BTU/H	33,700
	Rated Capacity	BTU/H	30,600
	Maximum Power Input	W	3,080
	Rated Power Input	W	3,040
Heating at 5°F ⁴	Maximum Capacity	BTU/H	29,400
	Maximum Power Input	W	3,000
Efficiency	SEER SEER2		16.1 18.4
	EER ¹ EER2 ¹		10.7 10.7
	HSPF [IV] HSPF2 [IV]		10.0 9.0
	COP at 47°F ²		4.0
	COP at 17°F at Maximum Capacity ³		2.95
	COP at 5°F at Maximum Capacity ⁴		2.87
	ENERGY STAR® Certified		No
Electrical	Voltage, Phase, Frequency		208/230, 1, 60
	Guaranteed Voltage Range	V AC	198 - 253
	Voltage: Indoor - Outdoor, S1-S2	V AC	208/230
	Voltage: Indoor - Outdoor, S2-S3	V DC	24
	Short-circuit Current Rating [SCCR]	kA	5
	Recommended Fuse/Breaker Size (Outdoor)	A	30
	Recommended Wire Size [Indoor - Outdoor]	AWG	14
	Power Supply		Indoor unit is powered by the outdoor unit
Indoor Unit	MCA	A	3.5
	Fan Motor Full Load Amperage	A	2.8
	Fan Motor Type		DC Motor
	Airflow Rate at Cooling, Dry	CFM	1,042–1,254–1,483
	Airflow Rate at Cooling, Wet	CFM	1,002–1,214–1,443
	Airflow Rate at Heating, Dry	CFM	1,042–1,254–1,483
	Sound Pressure Level [Cooling]	dB[A]	36–40–44
	Sound Pressure Level [Heating]	dB[A]	36–40–44
	External Static Pressure	in.WG	0.14–0.2–0.28–0.4–0.6
	Drain Pipe Size	In. [mm]	1-1/4 [32]
	Condensate Lift Mechanism, Maximum Distance	In. [mm]	27-9/16 [700]
	Coating on Heat Exchanger		—
	External Finish Color		Galvanized
	Unit Dimensions	W x D x H: In. [mm]	55-1/8 x 28-7/8 x 9-7/8 [1,400 x 732 x 250]
	Package Dimensions	W x D x H: In. [mm]	65 x 34-11/16 x 13-7/16 [1,650 x 880 x 341]
	Unit Weight	Lbs. [kg]	91 [41]
	Package Weight	Lbs. [kg]	106 [48]
Indoor Unit Operating Temperature Range	Cooling Intake Air Temp [Maximum / Minimum]*	°F	90 DB, 72 WB / 66 DB, 61 WB
	Heating Intake Air Temp [Maximum / Minimum]	°F	77 DB / 59 DB

NOTES:

AHRI Rated Conditions

(Rated data is determined at a fixed compressor speed)

¹Cooling (Indoor // Outdoor)

°F 80 DB, 67 WB // 95 DB, 75 WB

²Heating at 47°F (Indoor // Outdoor)

°F 70 DB, 60 WB // 47 DB, 43 WB

³Heating at 17°F (Indoor // Outdoor)

°F 70 DB, 60 WB // 17 DB, 15 WB

Conditions

⁴Heating at 5°F (Indoor // Outdoor)

°F 70 DB, 60 WB // 5 DB, 4 WB

*Indoor/Outdoor Unit Operating Temperature Range (Cooling Air Temp [Maximum / Minimum]):

- Applications should be restricted to comfort cooling only; equipment cooling applications are not recommended for low ambient temperature conditions.
 - » Wind baffles required to operate below 23°F DB in cooling mode.
 - » Heat pump system with wind baffle: 0°F - 115°F.
 - » Refer to wind baffle documentation for further information.

**Outdoor Unit Operating Temperature Range (Cooling Thermal Lock-out / Re-start Temperatures; Heating Thermal Lock-out / Re-start Temperatures):

- System cuts out in heating mode to avoid thermistor error and automatically restarts at these temperatures.

***Blue Fin Coating Standard from 2022 production:

- PU(Y/Z)-A(12/18)NKA7 - Beginning with serial number 12U*****
- PU(Y/Z)-A(24/30/36/42)NKA7 - Beginning with serial number 12U*****

PRMH20250492

SPECIFICATIONS: PEAD-A42AA7 & PUZ-A42NKA7

Outdoor Unit	MCA	A	25.0
	MOCP	A	31
	Fan Motor Full Load Amperage	A	0.5 + 0.5
	Fan Motor Output	W	74
	Airflow Rate [Cooling / Heating]	CFM	3880 / 3880
	Refrigerant Control		LEV
	Defrost Method		Reverse Cycle
	Coating on Heat Exchanger		Blue Fin Coating***
	Sound Pressure Level, Cooling ¹	dB(A)	52
	Sound Pressure Level, Heating ²	dB(A)	53
	Compressor Type		INVERTER-driven twin rotary
	Compressor Model		MNB33FBRMC-L
	Compressor Rated Load Amps	A	8
	Compressor Locked Rotor Amps	A	13.0
	Compressor Oil [Type // Charge]	oz.	FV50S // 45
	External Finish Color		Ivory Munsell 3Y 7.8/1.1
	Base Pan Heater		N/A
	Unit Dimensions	W x D x H: In. [mm]	41-5/16 x 13 (+1-3/16) x 52-11/16 [1050 x 330 (+30) x 1338]
	Package Dimensions	W x D x H: In. [mm]	42-15/16 x 17-11/16 x 56-4/16 [1091 x 450 x 1429]
	Unit Weight	Lbs. [kg]	214 [97]
	Package Weight	Lbs. [kg]	245 [111]
Outdoor Unit Operating Temperature Range	Cooling Air Temp [Maximum / Minimum]*	°F	115 DB / 0 DB
	Heating Air Temp [Maximum / Minimum]	°F	70 DB, 59 WB / -4 DB, -4 WB
	Heating Thermal Lock-out / Re-start Temperatures**	°F	-8 / -4
Refrigerant	Type		R410A
	Pre-Charged Refrigerant Amount	Lbs, oz	10.0, 6.0
	Maximum Pre-Charged Piping Length	Ft. [m]	100.0 [30.0]
	Additional Refrigerant Charge Per Additional Piping Length	oz./Ft. [g/m]	0.7 [50]
Piping	Gas Pipe Size O.D. [Flared]	In.[mm]	5/8 [15.88]
	Liquid Pipe Size O.D. [Flared]	In.[mm]	3/8 [9.52]
	Maximum Piping Length	Ft. [m]	165 [50]
	Maximum Height Difference	Ft. [m]	100 [30]
	Maximum Number of Bends		15

NOTES:

AHRI Rated Conditions

(Rated data is determined at a fixed compressor speed)

¹Cooling (Indoor // Outdoor)

°F 80 DB, 67 WB // 95 DB, 75 WB

²Heating at 47°F (Indoor // Outdoor)

°F 70 DB, 60 WB // 47 DB, 43 WB

³Heating at 17°F (Indoor // Outdoor)

°F 70 DB, 60 WB // 17 DB, 15 WB

Conditions

⁴Heating at 5°F (Indoor // Outdoor)

°F 70 DB, 60 WB // 5 DB, 4 WB

PRMH20250492

*Indoor/Outdoor Unit Operating Temperature Range (Cooling Air Temp [Maximum / Minimum]):

• Applications should be restricted to comfort cooling only; equipment cooling applications are not recommended for low ambient temperature conditions.

» Wind baffles required to operate below 23°F DB in cooling mode.

» Heat pump system with wind baffle: 0°F - 115°F.

» Refer to wind baffle documentation for further information.

**Outdoor Unit Operating Temperature Range (Cooling Thermal Lock-out / Re-start Temperatures; Heating Thermal Lock-out / Re-start Temperatures):

• System cuts out in heating mode to avoid thermistor error and automatically restarts at these temperatures.

***Blue Fin Coating Standard from 2022 production:

• PU(Y/Z)-A(12/18)NKA7 - Beginning with serial number 12U*****

• PU(Y/Z)-A(24/30/36/42)NKA7 - Beginning with serial number 12U*****

INDOOR UNIT ACCESSORIES: PEAD-A42AA7

Control Interface	3-Pin Connector	<input type="checkbox"/> PAC-715AD
	Airzone ZBS Wired Blueface Principal Controller White	<input type="checkbox"/> AZZBSBLUEFACECB
	Airzone ZBS Wired Blueface Principal Controller White	<input type="checkbox"/> AZZBSBLUEZEROCB
	Airzone ZBS Wired Lite Controller White	<input type="checkbox"/> AZZBSLITECB
	Airzone ZBS Wireless Lite Controller White	<input type="checkbox"/> AZZBSLITERB
	Airzone ZBS Wireless Think Controller White	<input type="checkbox"/> AZZBSTHINKRB
	BACnet® and Modbus® Interface	<input type="checkbox"/> PAC-UKPRC001-CN-1
	CN24 Relay Kit	<input type="checkbox"/> CN24RELAY-KIT-CM3
	IT Extender	<input type="checkbox"/> PAC-WHS01IE-E
	kumo station® for kumo cloud®	<input type="checkbox"/> PAC-WHS01HC-E
	Remote Operation Adapter†	<input type="checkbox"/> PAC-SF40RM-E
	Thermostat Interface	<input type="checkbox"/> PAC-US444CN-1
	Thermostat Interface	<input type="checkbox"/> PAC-US445CN-1
Remote Sensor	USNAP Adapter	<input type="checkbox"/> PAC-WHS01UP-E
	Flush Mount Remote Temperature Sensor	<input type="checkbox"/> PAC-USSEN002-FM-1
	Flush Mount Temperature Sensor	<input type="checkbox"/> PAC-USSEN001-FM-1
	Remote Temperature Sensor	<input type="checkbox"/> PAC-SE41TS-E
Wired Remote Controller	Wireless temperature and humidity sensor for kumo cloud®	<input type="checkbox"/> PAC-USWHS003-TH-1
	Deluxe Wired MA Remote Controller†	<input type="checkbox"/> PAR-40MAAU
	Simple Ductless Wired Remote Controller	<input type="checkbox"/> PAC-SDW01RC-1
	Simple MA Remote Controller†	<input type="checkbox"/> PAC-YT53CRAU-J
Wireless Remote Controller	Touch MA Controller†	<input type="checkbox"/> PAR-CT01MAU-SB
	kumo touch™ RedLINK™ Wireless Controller	<input type="checkbox"/> MHK2
	Lockdown bracket for remote controller	<input type="checkbox"/> RCMKP1CB
	Wireless MA Receiver	<input type="checkbox"/> PAR-FA32MA-W
Condensate	Wireless MA Remote Controller	<input type="checkbox"/> PAR-FL32MA-E
	Blue Diamond (Advanced) Mini Condensate Pump w/ Reservoir & Sensor (208/230V) [recommended]	<input type="checkbox"/> X87-721
	Blue Diamond (MegaBlue Advanced) Condensate Pump w/ Reservoir & Sensor	<input type="checkbox"/> X87-835
	Blue Diamond Sensor Extension Cable — 15 Ft.	<input type="checkbox"/> C13-103
Control Wire	Refco Condensate Pump (100-240 VAC) up to 120,000 BTU/H	<input type="checkbox"/> COMBI
	20/2PR, 1PR shielded + 1PR plenum wire for Airzone, 100 ft reel	<input type="checkbox"/> CW2042S2-100
Disconnect Switch	20/2PR, shielded + 1PR plenum wire for Airzone, 500 ft reel	<input type="checkbox"/> CW2042S2-500
	(30A/600V/UL) [fits 2" X 4" utility box] - Black	<input type="checkbox"/> TAZ-MS303
Filter Box	(30A/600V/UL) [fits 2" X 4" utility box] - White	<input type="checkbox"/> TAZ-MS303W
	Filter Box with MERV 13 Filter	<input type="checkbox"/> FBM2-4-A
Lineset	10' x 3/8" x 10' x 5/8" Lineset (Twin-Tube Insulation)	<input type="checkbox"/> MPLS385812T-10
	100' x 3/8" x 100' x 5/8" Lineset (Twin-Tube Insulation)	<input type="checkbox"/> MPLS385812T-100
	15' x 3/8" x 15' x 5/8" Lineset (Twin-Tube Insulation)	<input type="checkbox"/> MPLS385812T-15
	30' x 3/8" x 30' x 5/8" Lineset (Twin-Tube Insulation)	<input type="checkbox"/> MPLS385812T-30
	50' x 3/8" x 50' x 5/8" Lineset (Twin-Tube Insulation)	<input type="checkbox"/> MPLS385812T-50
	65' x 3/8" x 65' x 5/8" Lineset (Twin-Tube Insulation)	<input type="checkbox"/> MPLS385812T-65

NOTES:

†PAC-SF40RM-E (Unable to use with wireless remote controller)

PRMH20250492

OUTDOOR UNIT ACCESSORIES: PUZ-A42NKA7

Air Outlet Guide	Air Outlet Guide (1 Piece)	<input type="checkbox"/> PAC-SG59SG-E
	Air Outlet Guide (1 Piece)	<input type="checkbox"/> PAC-SH96SG-E (two pieces are required)
Control/Service Tool	Control/Service Tool	<input type="checkbox"/> PAC-SK52ST
	M- & P-Series Maintenance Tool Cable Set	<input type="checkbox"/> M21EC0397
	USB/UART Conversion Cable (Required for all laptop connection)	<input type="checkbox"/> M21EC1397
M-NET Converter	M-NET Converter	<input type="checkbox"/> PAC-SJ85MA-E
	M-NET Converter	<input type="checkbox"/> PAC-SJ95MA-E
Mini-Split Wire	14 Gauge, 4 wire MiniSplit Cable—250 ft. roll	<input type="checkbox"/> S144-250
	14 Gauge, 4 wire MiniSplit Cable—50 ft. roll	<input type="checkbox"/> S144-50
	16 Gauge, 4 wire MiniSplit Cable—250 ft. roll	<input type="checkbox"/> S164-250
	16 Gauge, 4 wire MiniSplit Cable—50 ft. roll	<input type="checkbox"/> S164-50
Mounting Pad	Condensing Unit Mounting Pad: 24" x 42" x 3"	<input type="checkbox"/> ULTRILITE2
Stand	18" Dual Fan Stand	<input type="checkbox"/> QSMS1802M
	24" Dual Fan Stand	<input type="checkbox"/> QSMS2402M
	Condenser Wall Bracket	<input type="checkbox"/> QSWB2000M-1
	Condenser Wall Bracket - Stainless Steel Finish	<input type="checkbox"/> QSWBSS
	Outdoor Unit Stand — 12" High	<input type="checkbox"/> QSMS1202M
Wind Baffle	Front Wind Baffle	<input type="checkbox"/> WB-PA3 (two pieces are required)
	Rear Wind Baffle	<input type="checkbox"/> WB-RE6
	Side Advanced Wind Baffle	<input type="checkbox"/> WB-SD6

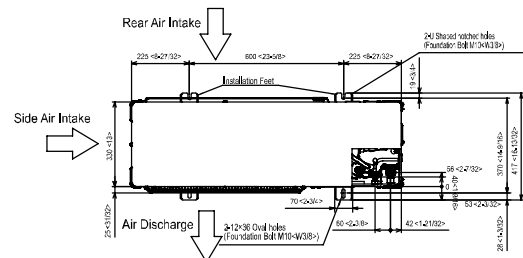
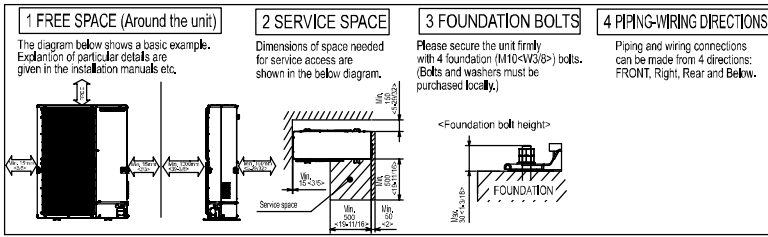
PRMH20250492

INDOOR UNIT DIMENSIONS: PEAD-A42AA7

PRMH20250492

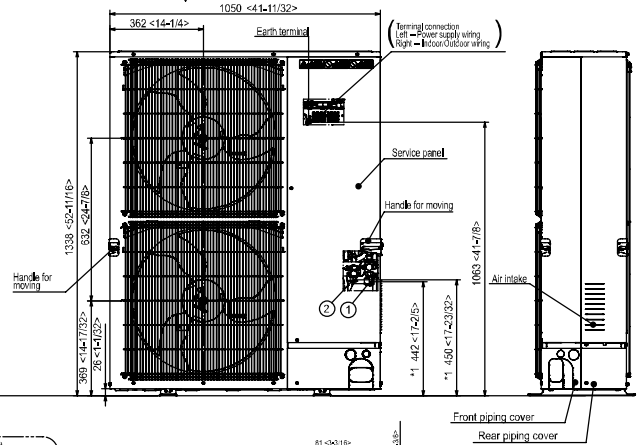
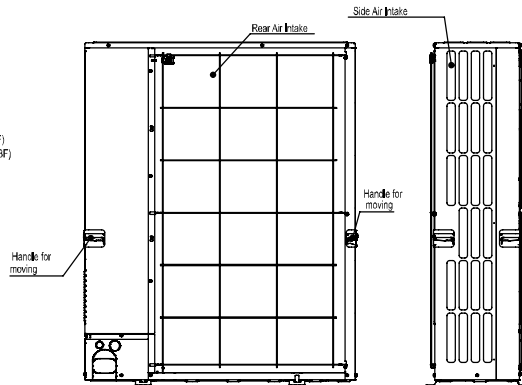
OUTDOOR UNIT DIMENSIONS: PUZ-A42NKA7

Unit: mm<in>

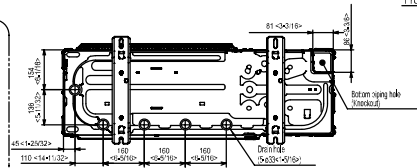
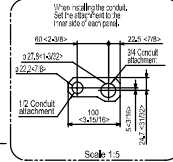
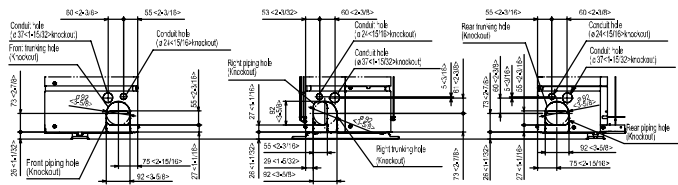


Example of Notes

- ① -- Refrigerant GAS pipe connection (FLARE) ø15.88(5/8")
- ② -- Refrigerant LIQUID pipe connection (FLARE) ø9.52(3/8")
- *1 -- Indication of STOP VALVE connection location.



Piping Knockout Hole Details



PRMH20250492