

MSY-GS18NA & MUY-GS18NA
18,000 BTU/H WALL-MOUNTED INDOOR UNIT
18,000 BTU/H COOLING ONLY OUTDOOR UNIT



Job Name:

System Reference:

Date:



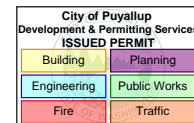
Indoor Unit.....MSY-GS18NA

Outdoor Unit.....MUY-GS18NA

PRMH20250492



Full-Sized legible color report must be on site and made available by the Permittee for all inspections.



INDOOR UNIT FEATURES

- Slim wall-mounted indoor units provide zone comfort control
- Dual Barrier Coating applied to the heat exchanger, vanes and fan to prevent hydrophilic and hydrophobic dirt build-up
- Optional Microparticle Filter designed to capture PM2.5
- The outdoor unit powers the indoor unit, and should a power outage occur, the system is automatically restarted when power returns
- Quiet operation
- Smart Set: recalls a preferred preset temperature setting at the touch of a button
- Multiple fan speed options: Quiet, Low, Medium, High, Super-high, Auto
- Multiple control options available:
 - Back-lit screen handheld remote controller (provided with the unit)
 - kumo cloud® smart device app for remote access
 - Third-party interface options
 - Wired or wireless controllers

OUTDOOR UNIT FEATURES

- INVERTER-driven compressor and LEV provide high efficiency and comfort while using only the energy needed to maintain maximum performance
- Blue Fin anti-corrosion treatment applied to the outdoor unit heat exchanger for increased coil protection and longer life
 - Rated for 2,000 hours spraying time per ASTM B117 Standard

SPECIFICATIONS: MSY-GS18NA & MUY-GS18NA

Cooling at 95°F ¹	Maximum Capacity	BTU/H	22,000
	Rated Capacity	BTU/H	18,000
	Minimum Capacity	BTU/H	5,800
	Maximum Power Input	W	2,150
	Rated Power Input	W	1,340
	Moisture Removal	Pints/h	3.8
	Sensible Heat Factor		0.77
	Power Factor [208V / 230V]	%	97.0 / 97.0
Efficiency	SEER SEER2		20.5 21.5
	EER ¹ EER2 ¹		13.45 13.45
	ENERGY STAR® Certified		Yes
Electrical	Voltage, Phase, Frequency		208/230, 1, 60
	Guaranteed Voltage Range	V AC	187 - 253
	Voltage: Indoor - Outdoor, S1-S2	V AC	208/230
	Voltage: Indoor - Outdoor, S2-S3	V DC	24
	Short-circuit Current Rating [SCCR]	kA	5
	Recommended Fuse/Breaker Size (Outdoor)	A	15
	Recommended Wire Size [Indoor - Outdoor]	AWG	14
	Power Supply		Indoor unit is powered by the outdoor unit
Indoor Unit	MCA	A	1.0
	Fan Motor Full Load Amperage	A	0.5
	Fan Motor Output	W	40
	Airflow Rate at Cooling, Dry	CFM	250–325–407–511–629
	Airflow Rate at Cooling, Wet	CFM	225–292–367–460–566
	Sound Pressure Level [Cooling]	dB[A]	28–33–38–44–49
	Drain Pipe Size	In. [mm]	5/8 [15.88]
	Coating on Heat Exchanger		Dual Barrier Coating
	External Finish Color		Munsell 1.0Y 9.2/0.2
	Unit Dimensions	W x D x H: In. [mm]	36-5/16 x 9-13/16 x 12 [923 x 250 x 305]
	Package Dimensions	W x D x H: In. [mm]	39 x 13 x 15 [990 x 330 x 380]
Indoor Unit Operating Temperature Range	Unit Weight	Lbs. [kg]	28 [12.4]
	Package Weight	Lbs. [kg]	32 [14.2]
Cooling Intake Air Temp [Maximum / Minimum]*		°F	90 DB, 73 WB / 67 DB, 57 WB
Outdoor Unit	MCA	A	12.0
	MOCP	A	15
	Fan Motor Full Load Amperage	A	0.93
	Fan Motor Output	W	50
	Refrigerant Control		Linear expansion valve
	Defrost Method		N/A
	Sound Pressure Level, Cooling ¹	dB(A)	54
	Compressor Type		DC inverter driven Twin Rotary
	Compressor Model		SNB130FQBMT
	Compressor Rated Load Amps	A	8.4
	Compressor Locked Rotor Amps	A	10.5
	External Finish Color		Munsell 3Y 7.8/1/1
	Base Pan Heater		N/A
	Unit Dimensions	W x D x H: In. [mm]	33-1/16 x 13 x 34-5/8 [840 x 330 x 880]
	Package Dimensions	W x D x H: In. [mm]	38-3/4 x 16-3/4 x 39 [980 x 420 x 990]
	Unit Weight	Lbs. [kg]	119 [53.7]
	Package Weight	Lbs. [kg]	137 [61.9]
Outdoor Unit Operating Temperature Range	Cooling Air Temp [Maximum / Minimum]*	°F	115 DB / 14 DB
	Cooling Thermal Lock-out / Re-start Temperatures**	°F	-4 / 0
Refrigerant	Type		R410A
	Pre-Charged Refrigerant Amount	Lbs, oz	3.0, 7.0
	Maximum Pre-Charged Piping Length	Ft. [m]	25.0 [7.5]
	Additional Refrigerant Charge Per Additional Piping Length	oz./Ft. [g/m]	1.08 [20]
Piping	Gas Pipe Size O.D. [Flared]	In.[mm]	1/2 [12.7]
	Liquid Pipe Size O.D. [Flared]	In.[mm]	1/4 [6.35]
	Maximum Piping Length	Ft. [m]	100 [30]
	Maximum Height Difference	Ft. [m]	50 [15]
	Maximum Number of Bends		10

NOTES:

AHRI Rated Conditions

(Rated data is determined at a fixed compressor speed)

¹Cooling (Indoor // Outdoor)

²Heating at 47°F (Indoor // Outdoor)

³Heating at 17°F (Indoor // Outdoor)

°F 80 DB, 67 WB // 95 DB, 75 WB

°F 70 DB, 60 WB // 47 DB, 43 WB

°F 70 DB, 60 WB // 17 DB, 15 WB

PRMH20250492

*Indoor/Outdoor Unit Operating Temperature Range (Cooling Air Temp [Maximum / Minimum]):

• Applications should be restricted to comfort cooling only; equipment cooling applications are not recommended for low ambient temperature conditions.

**Outdoor Unit Operating Temperature Range (Cooling Thermal Lock-out / Re-start Temperatures):

• System cuts out in heating mode to avoid thermistor error and automatically restarts at these temperatures.

INDOOR UNIT ACCESSORIES: MSY-GS18NA

Control Interface	IT Extender	<input type="checkbox"/> PAC-WHS01IE-E
	kumo station® for kumo cloud®	<input type="checkbox"/> PAC-WHS01HC-E
	Procon BACnet® and Modbus® Interface	<input type="checkbox"/> PAC-UKPRC001-CN-1
	System Control Interface	<input type="checkbox"/> MAC-334IF-E
	Thermostat Interface	<input type="checkbox"/> PAC-US444CN-1
	Thermostat Interface	<input type="checkbox"/> PAC-US445CN-1
	USNAP Adapter	<input type="checkbox"/> PAC-WHS01UP-E
	Wireless Interface for kumo cloud®	<input type="checkbox"/> PAC-USWHS002-WF-2
Remote Sensor	Wired Remote Sensor	<input type="checkbox"/> M21EAA307
	Wireless temperature and humidity sensor for kumo cloud®	<input type="checkbox"/> PAC-USWHS003-TH-1
Wired Remote Controller	Deluxe Wired MA Remote Controller†	<input type="checkbox"/> PAR-40MAAU
	Simple Ductless Wired Remote Controller	<input type="checkbox"/> PAC-SDW01RC-1
	Simple MA Remote Controller†	<input type="checkbox"/> PAC-YT53CRAU-J
	Touch MA Controller†	<input type="checkbox"/> PAR-CT01MAU-SB
Wireless Remote Controller	kumo touch™ RedLINK™ Wireless Controller	<input type="checkbox"/> MHK2
	Lockdown bracket for remote controller	<input type="checkbox"/> RCMKP1CB
Condensate	Blue Diamond (Advanced) Mini Condensate Pump w/ Reservoir & Sensor (208/230V) [recommended]	<input type="checkbox"/> X87-721
	Blue Diamond (MegaBlue Advanced) Condensate Pump w/ Reservoir & Sensor	<input type="checkbox"/> X87-835
	Blue Diamond (MicroBlue) Mini Condensate Pump (110/208/230V) up to 18,000 BTU/H	<input type="checkbox"/> X86-003
	Blue Diamond Alarm Extension Cable — 6.5 Ft.	<input type="checkbox"/> C13-192
	Blue Diamond MultiTank — collection tank for use with multiple pumps	<input type="checkbox"/> C21-014
	Blue Diamond Sensor Extension Cable — 15 Ft.	<input type="checkbox"/> C13-103
	Drain Pan Level Sensor/Control	<input type="checkbox"/> SS610E
	Fascia Kit for MicroBlue Pump, mounts the MicroBlue and sensor directly beneath indoor unit	<input type="checkbox"/> T18-016
	Refco Condensate Pump (100-240 VAC)	<input type="checkbox"/> GOBI-II
	Refco Condensate Pump (100-240 VAC) up to 120,000 BTU/H	<input type="checkbox"/> COMBI
	Sauermann Condensate Pump	<input type="checkbox"/> SI30-230
Disconnect Switch	(30A/600V/UL) [fits 2" X 4" utility box] - Black	<input type="checkbox"/> TAZ-MS303
	(30A/600V/UL) [fits 2" X 4" utility box] - White	<input type="checkbox"/> TAZ-MS303W
Filter	Anti-allergy Enzyme Filter	<input type="checkbox"/> MAC-408FT-E
	Microparticle (PM2.5) Filter	<input type="checkbox"/> MAC-EMF515FT-E
Lineset	100' x 1/4" x 100' / 1/2" Lineset (Twin-Tube Insulation)	<input type="checkbox"/> MLS141212T-100
	15' x 1/4" x 15' / 1/2" Lineset (Twin-Tube Insulation)	<input type="checkbox"/> MLS141212T-15
	30' x 1/4" x 30' / 1/2" Lineset (Twin-Tube Insulation)	<input type="checkbox"/> MLS141212T-30
	50' x 1/4" x 50' / 1/2" Lineset (Twin-Tube Insulation)	<input type="checkbox"/> MLS141212T-50
	65' x 1/4" x 65' / 1/2" Lineset (Twin-Tube Insulation)	<input type="checkbox"/> MLS141212T-65

NOTES:

†Requires MAC-334IF-E

- M-Series EZ FIT® Recessed Ceiling Cassette, Floor-mount and Wall-mount
Allows indoor units to connect to an MA Controller:
Deluxe MA Remote Controller
Simple MA Controller
Touch MA Controller

PRMH20250492

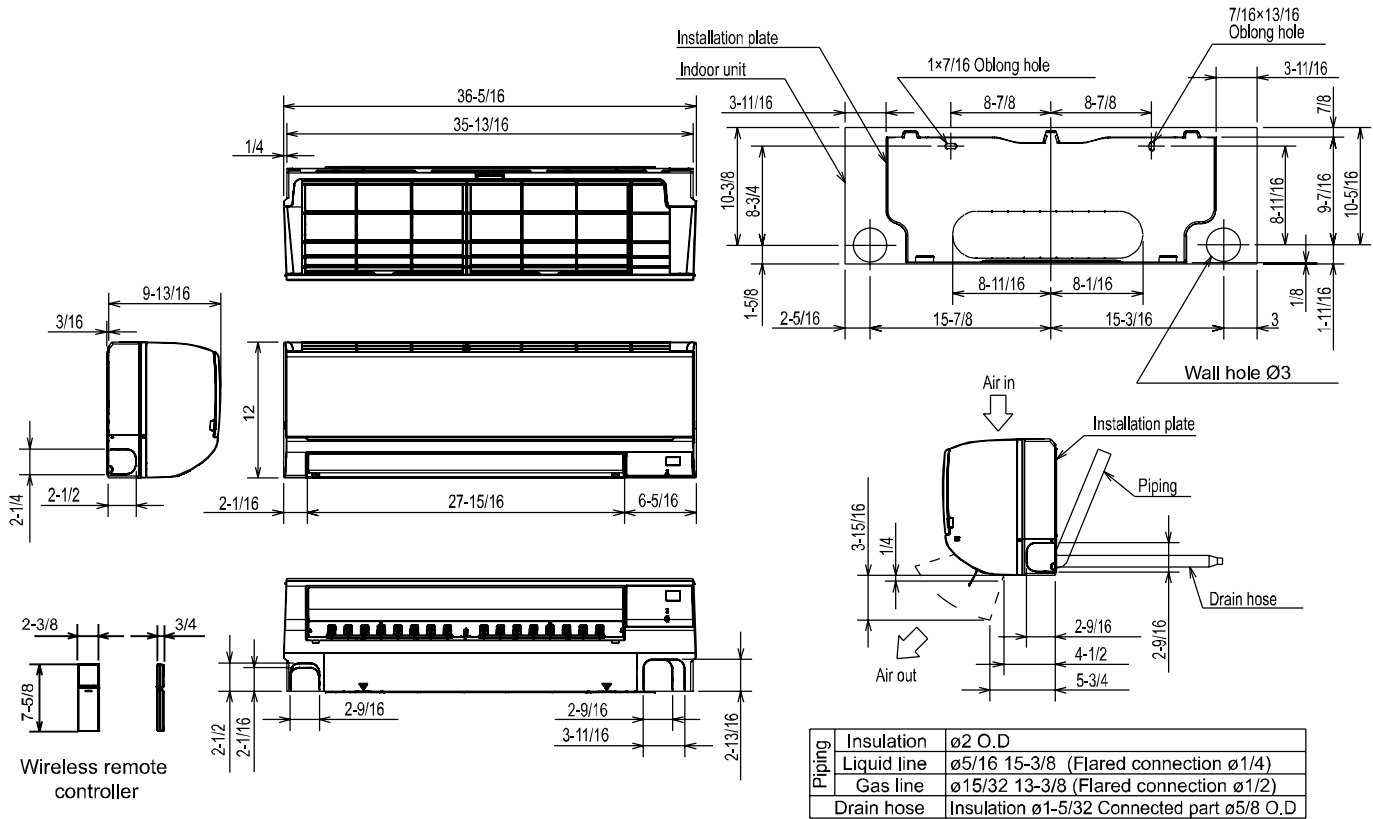
OUTDOOR UNIT ACCESSORIES: MUY-GS18NA

Air Outlet Guide	Air Outlet Guide	<input type="checkbox"/> MAC-886SG-E
Hail Guards	Hail Guard	<input type="checkbox"/> HG-A7
Lineset	100' x 1/4" x 100' / 1/2" Lineset (Twin-Tube Insulation)	<input type="checkbox"/> MLS141212T-100
	15' x 1/4" x 15' / 1/2" Lineset (Twin-Tube Insulation)	<input type="checkbox"/> MLS141212T-15
	30' x 1/4" x 30' / 1/2" Lineset (Twin-Tube Insulation)	<input type="checkbox"/> MLS141212T-30
	50' x 1/4" x 50' / 1/2" Lineset (Twin-Tube Insulation)	<input type="checkbox"/> MLS141212T-50
	65' x 1/4" x 65' / 1/2" Lineset (Twin-Tube Insulation)	<input type="checkbox"/> MLS141212T-65
Mounting Pad	Condensing Unit Mounting Pad: 16" x 36" x 3"	<input type="checkbox"/> ULTRILITE1
	Outdoor Unit 3-1/4 inch Mounting Base (Pair) - Plastic	<input type="checkbox"/> DSD-400P
Stand	18" Single Fan Stand	<input type="checkbox"/> QSMS1801M
	24" Single Fan Stand	<input type="checkbox"/> QSMS2401M
	Condenser Wall Bracket	<input type="checkbox"/> QSWB2000M-1
	Condenser Wall Bracket - Stainless Steel Finish	<input type="checkbox"/> QSWBSS
	Outdoor Unit Stand — 12" High	<input type="checkbox"/> QSMS1201M

PRMH20250492

INDOOR UNIT DIMENSIONS: MSY-GS18NA

Unit: inch



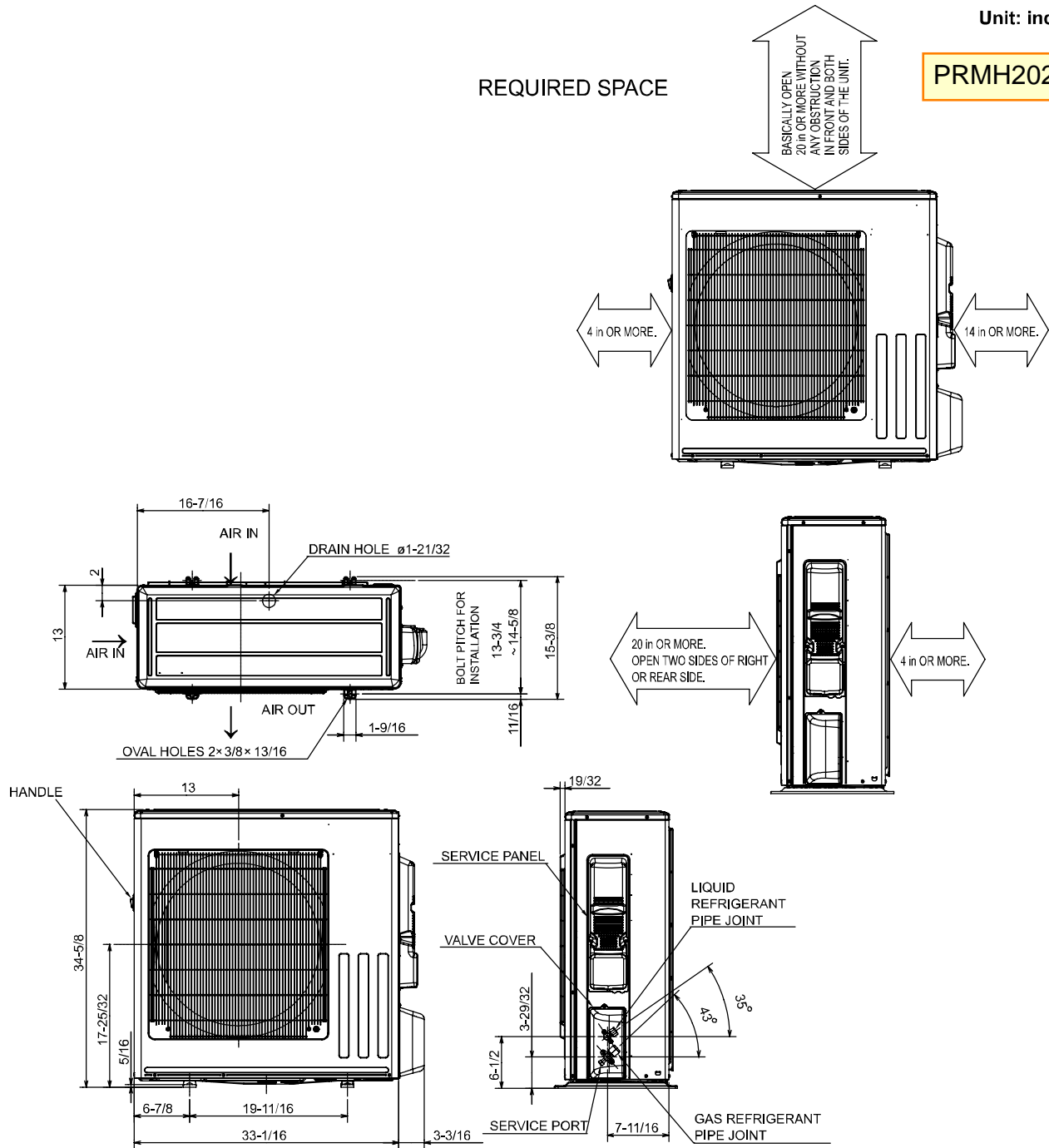
PRMH20250492

OUTDOOR UNIT DIMENSIONS: MUY-GS18NA

Unit: inch

PRMH20250492

REQUIRED SPACE



REFRIGERANT PIPE JOINT	LIQUID REFRIGERANT PIPE	FLARED $\phi 6.35$ (1/4")
	GAS REFRIGERANT PIPE	GS18: FLARED $\phi 12.7$ (1/2")
		GS24/30/36: FLARED $\phi 15.88$ (5/8")

1340 Satellite Boulevard Suwanee, GA 30024
Toll Free: 800-433-4822 www.mehvac.com

FORM# MSY-GS18NA & MUY-GS18NA - 202305

