

**1023 39TH AVE SE, PUYALLUP, WA 98374**

WIRE LEGEND								
SYMBOL	DESCRIPTION	THHN	FPL	FPLP	WET	COLOR CODING	CIRCUIT TYPE	NOTES
C	1 PAIR 14AWG FIRE RATED CABLE	YES	972	609936	AQ226		AUDIBLE (NAC) CIRCUIT	
NOTES:								
** DIFFERENT COLORS/STRIPE COMBINATIONS TO BE USED FOR DIFFERENT CIRCUIT TYPES. LABEL ALL CIRCUITS ACCORDINGLY								
1- WIRE MANUFACTURER IS FOR REFERENCE PURPOSE ONLY. WHEN USING OTHER MANUFACTURE, ENSURE PROPER CROSS REFERENCE								
2- FPLP CAN BE USED IN MOST ALL APPLICATIONS WITH THE EXCLUSION OF WET AND CIRCUIT INTEGRITY REQUIREMENTS								
3- INSTALLING PER NEC. LISTED TYPE CABLE CONSISTENT WITH NEC REQUIREMENTS, I.E. PLENUM, RISER, UNDERGROUND, ETC.								
4- THE "Y" FIBER OPTIC CABLE LISTED IS A BELDEN CABLE PART NUMBER AS WET PENN NO LONGER SUPPORTS FIBER OPTIC CABLE								
5- THIS CABLE MUST BE INSTALLED IN A CONTINUOUS PATH POINT-TO-POINT. ABSOLUTLEY NO SPLICES ARE ALLOWED.								
6- THIS IS A SPECIFIC CABLE. NO ALTERNATES ARE ALLOWED								

APS Name: APS-1 (EXISTING)

Location: ELECTRICAL ROOM

P.S. Type: FPCS-2458

Description:

Part #:

02702 (75)

SWLED (75)

Existing Devices on Circuit:

PC2WL (30)

Standby:

Alarm:

0.0910

0.1450

Wire Horn w/ Strobe set at 75sd

Wall Strobe set at 75sd

Existing Devices on Circuit:

0.0000

0.0700

0.0000

0.0700

Celling Horn w/ Strobe set at 30sd

0.0000

0.0900

Existing Circuit Load (Amps):

# Devices per Panel:

Total Standby Circuit Calculated Amps (3):

Total Alarm Circuit Calculated Amps (1):

Wire Gauge Used (awg):

Circuit Length (ft):

Estimated Voltage Drop (dc):

Estimated EOL Voltage (dc):

Calculated Voltage Drop %:

6

6

0.000

0.000

0.000

0.000

0.000

0.000

0.000

0.000

0.000

0.000

0.000

0.000

0.000

0.000

0.000

0.000

0.000

0.000

0.000

0.000

0.000

0.000

0.000

0.000

0.000

0.000

0.000

0.000

0.000

0.000

0.000

0.000

0.000

0.000

0.000

0.000

0.000

0.000

0.000

0.000

0.000

0.000

0.000

0.000

0.000

0.000

0.000

0.000

0.000

0.000

0.000

0.000

0.000

0.000

0.000

0.000

0.000

0.000

0.000

0.000

0.000

0.000

0.000

0.000

0.000

0.000

0.000

0.000

0.000

0.000

0.000

0.000

0.000

0.000

0.000

0.000

0.000

0.000

0.000

0.000

0.000

0.000

0.000

0.000

0.000

0.000

0.000

0.000

0.000

0.000

0.000

0.000

0.000

0.000

0.000

0.000

0.000

0.000

0.000

0.000

0.000

0.000

0.000

0.000

0.000

0.000

0.000

0.000

0.000

0.000

0.000

0.000

0.000

0.000

0.000

0.000

0.000

0.000

0.000

0.000

0.000

0.000

0.000

0.000

0.000

0.000

0.000

0.000

0.000

0.000

0.000

0.000

0.000

0.000

0.000

0.000

0.000

0.000

0.000

0.000

0.000

0.000

0.000

0.000

0.000

0.000

0.000

0.000

0.000

0.000

0.000

0.000

0.000

0.000

0.000

0.000

0.000

0.000

0.000

0.000

0.000

0.000

0.000

0.000

0.000

0.000

0.000

0.000

0.000

0.000

0.000

0.000

0.000

0.000

0.000

0.000

0.000

0.000

0.000

0.000

0.000

0.000

0.000

0.000

0.000

0.000

0.000

0.000

0.000

0.000

0.000

0.000

0.000

0.000

0.000

0.000

0.000

0.000

0.000

0.000

0.000

0.000

0.000

0.000

0.000

0.000

0.000

0.000

0.000

0.000

0.000

0.000

0.000

0.000

0.000

0.000

0.000

0.000

0.000

0.000

0.000

0.000

0.000

0.000

0.000

0.000

0.000

0.000

0.000

0.000

0.000

0.000

0.000

0.000

0.000

0.000

0.000

0.000

0.000

0.000

0.000

0.000

0.000

0.000

0.000

0.000

0.000

0.000

0.000

0.000

0.000

0.000

0.000

0.000

0.000

0.000

0.000

0.000

0.000

0.000

0.000

0.000

0.000

0.000

0.000

0.000

0.000

0.000

0.000

0.000

0.000

0.000

0.000

0.000

0.000

0.000

0.000

0.000

0.000

0.000

0.000

0.000

0.000

0.000

0.000

0.000

0.000

0.000

0.000

0.000

0.000

0.000

0.000

0.000

0.000

0.000

0.000

0.000

0.000

0.000

0.000

0.000

0.000

0.000

0.000

0.000

0.000

0.000

0.000

0.000

0.000

0.000

0.000

0.000

0.000

0.000

0.000

0.000

0.000

0.000

0.000

0.000

0.000

0.000

0.000

0.000

0.000

0.000

0.000

0.000

0.000

0.000

0.000

0.000

0.000

0.000

0.000

0.000

0.000

0.000

0.000

0.000

0.000

0.000

0.000

0.000

0.000

0.000

0.000

0.000

0.000

0.000

0.000

0.000

0.000

0.000

0.000

0.000

0.000

0.000

0.000

0.000

0.000

0.000

0.000

0.000

0.000

0.000

0.000

0.000

0.000

0.000

0.000

0.000

0.000

0.000

0.000

0.000

0.000

0.000

0.000

0.000

0.000

0.000

0.000

0.000

0.000

0.000

0.000

0.000

0.000

0.000

0.000

0.000

0.000

0.000

0.000

0.000

0.000

0.000

0.000

0.000

0.000

0.000

0.000

0.000

0.000

0.000

0.000

0.000

0.000

0.000

0.000

0.000

0.000

0.000

0.000

0.000

0.000

0.000

0.000

0.000

0.000

0.000

0.000

0.000

0.000

0.000

0.000

0.000

0.000

0.000

0.000

0.000

0.000

0.000

0.000

0.000

0.000

0.000

0.000

0.000

0.000

0.000

0.000

0.000

0.000

0.000

0.000

0.000

0.000

0.000

0.000

0.000

0.000

0.000

0.000

0.000

0.000

0.000

0.000

0.000

0.000

0.000

0.000

0.000

0.000

0.000

0.000

0.000

0.000

0.000

0.000

0.000

0.000

0.000

0.000

0.000

0.000

0.000

0.000

0.000

0.000

0.000

0.000

0.000

0.000

0.000

0.000

0.000

0.000

0.000

0.000

0.000

0.000

0.000

0.000

0.000

0.000

0.000

0.000

0.000

0.000

0.000

0.000

0.000

0.000

0.000

0.000

0.000

0.000

0.000

0.000

0.000

0.000

0.000

0.000

0.000

0.000

0.000

0.000

0.000

0.000

0.000

0.000

0.000

0.000

0.000

0.000

0.000

0.000

0.000

0.000

0.000

0.000

0.000

0.000

0.000

0.000

0.000

0.000

0.000

0.000

0.000

0.000

0.000

0.000

0.000

0.000

0.000

0.000

0.000

0.000

0.000

0.000

0.000

0.000

0.000

0.000

0.000

0.000

0.000

0.000

0.000

0.000

0.000

0.000

0.000

0.000

0.000

0.000

0.000

0.000

0.000

0.000

0.000

0.000

0.000

0.000

0.000

0.000

0.000

0.000

0.000

0.000

0.000

0.000

0.000

0.000

0.000

0.000

0.000

0.000

0.000

0.000

0.000

0.000

0.000

0.000

0.000

0.000

0.000

0.000

0.000

0.000

0.000

0.000

0.000

0.000

0.000

0.000

0.000

0.000

0.000

0.000

0.000

0.000

0.000

0.000

0.000

0.000

0.000

0.000

0.000

0.000

0.000

0.000

0.000

0.000

0.000

0.000

0.000

0.000

0.000

0.000

0.000

0.000

0.000

0.000

0.000

0.000

0.000

0.000

0.000

0.000

0.000

0.000

0.000

0.000

0.000

0.000

0.000

0.000

0.000

0.000

0.000

0.000

0.000

0.000

0.000

0.000

0.000

0.000

0.000

0.000

0.000

0.000

0.000

0.000

0.000

0.000

0.000

0.000

0.000

0.000

0.000

0.000

0.000

0.000

0.000

0.000

0.000

0.000

0.000

0.000

0.000

0.000

0.000

0.000

0.000

0.000

0.000

0.000

0.000

0.000

0.000

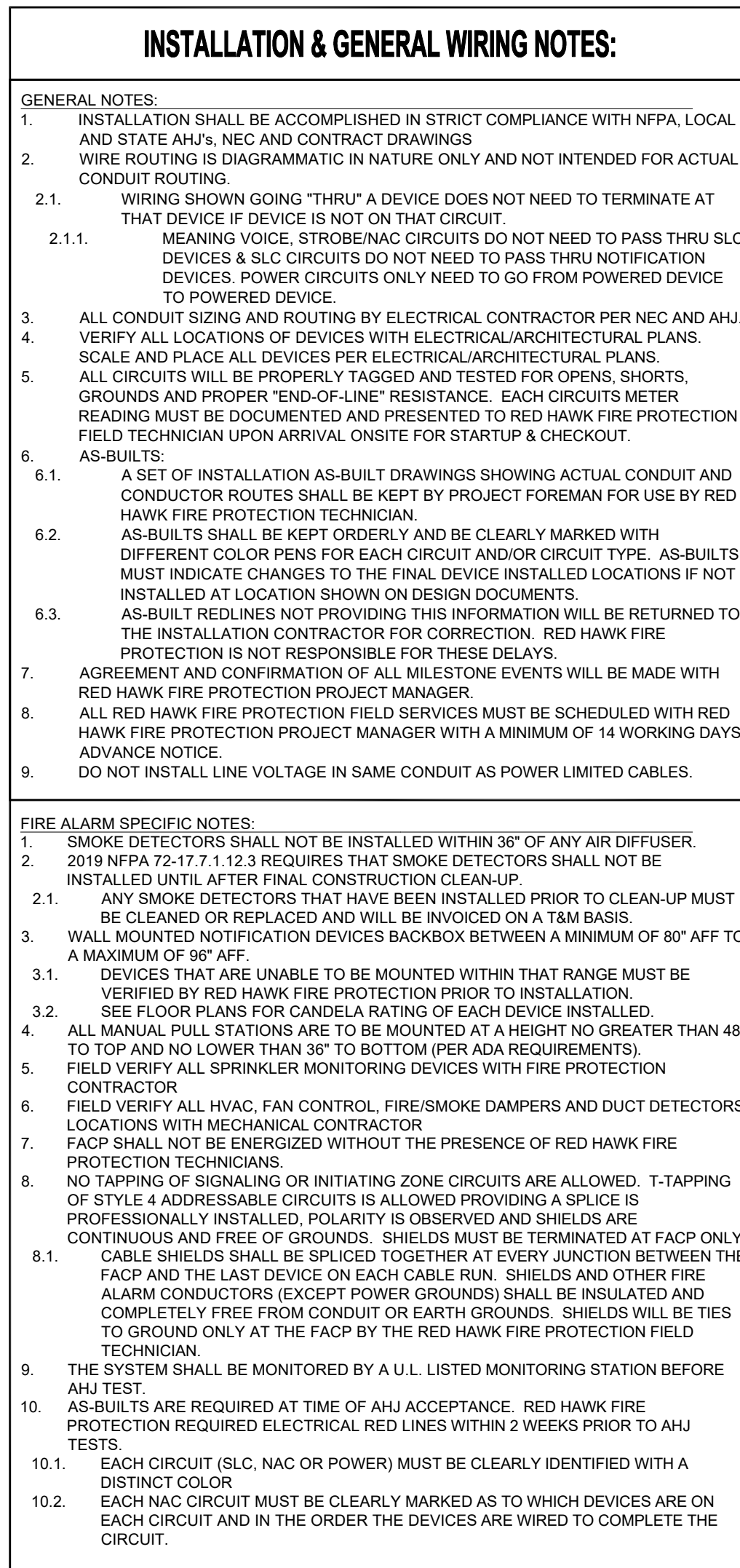
0.000

0.000

0.000

0.000

0.0



**RED HAWK**  
**FIRE PROTECTION, LLC**



*Ever Vigilant*

917 134TH ST. SW, STE B-3  
EVERETT, WA 98204  
PHONE: (425) 818-3313  
WA CL# REDHAHF9010P  
WA EL# REDHAHF8030D

NICET Stamp

The image shows a NICET Certification logo. It consists of a rectangular box with a thick black border. Inside the box, the text is arranged as follows: 'NICET' in large, bold, black capital letters at the top; 'CERTIFICATION' in large, bold, black capital letters below it; a horizontal line; 'THESE FIRE ALARM DRAWINGS' in bold, black capital letters; 'HAVE BEEN REVIEWED BY:' in bold, black capital letters; 'MIKE SERESUN' in bold, black capital letters; 'FIRE PROTECTION ENGINEERING' in bold, black capital letters; 'TECHNOLOGY' in bold, black capital letters; 'FIRE ALARM SYSTEMS - LEVEL III' in bold, black capital letters; 'NICET CERTIFICATION # 101668' in bold, black capital letters; and 'CERTIFICATION EXPIRES -11/01/2027' in bold, black capital letters at the bottom.

Approvals Required

[illegible]

Contract With

BURKE ELECTRIC

12605 44TH PL S  
TUKWILA, WA 98178

Contract Name

CENTERIS DATA  
CENTER

1023 39TH AVE SE  
PUYALLUP, WA 98374

FIRE ALARM SYSTEM ADDITION

Sheet Title

## PROJECT INFO, CALCULATIONS & FAS LAYOUT

### Key Plan

Date: 04/17/2025  
Job Number: 390070  
Designer: SEAN D. FODOR  
Building Permit: -

Sheet Number

**FA**

**SHEET 1 OF 1**

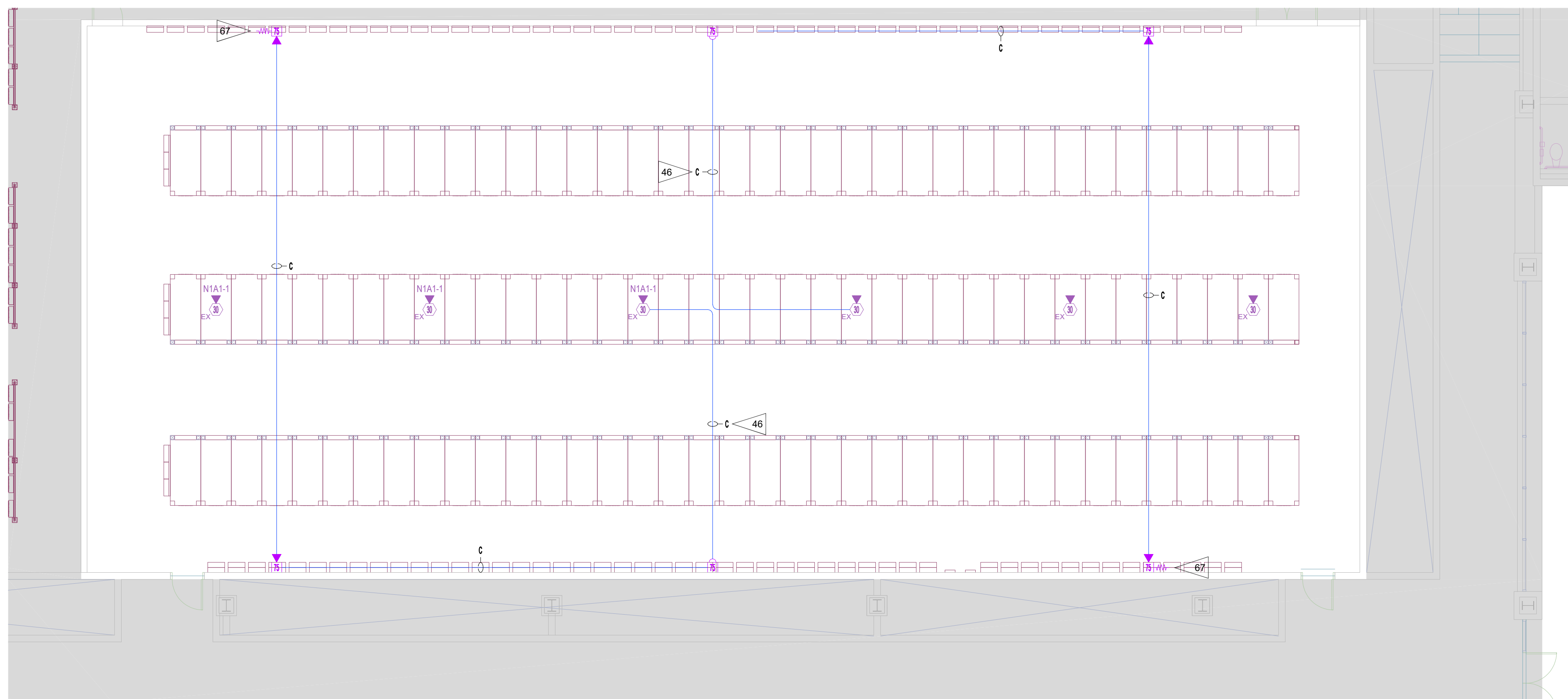
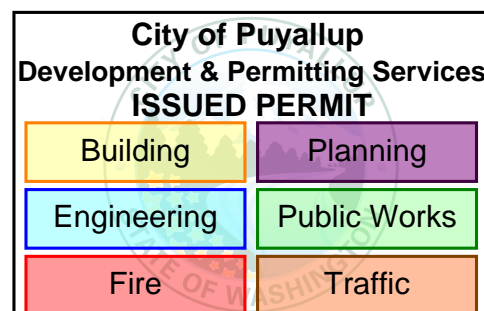
---

SCALE:  $\frac{1}{8}" = 1'-0"$

**City of Puyallup  
Fire  
REVIEWED  
FOR  
COMPLIANCE**

THE APPROVED CONSTRUCTION PLANS AND ALL ENGINEERING MUST BE POSTED ON THE JOB AT ALL INSPECTIONS IN A VISIBLE AND READILY ACCESSIBLE LOCATION.

Approval of submitted plans is not an approval of omissions or oversight by this office or noncompliance with any applicable regulations of local government. The contractor is responsible for making sure that the building complies with all applicable building codes and regulations of the local government.



## 1 LEVEL 2 FIRE ALARM LAYOUT

**SCALE: 1/8" = 1'-0"**



1