

APPROVED PLAN
CITY OF PUYALLUP
PLANNING DIVISION

APPROVED BY: C. BEALE

DATE 05-26-11

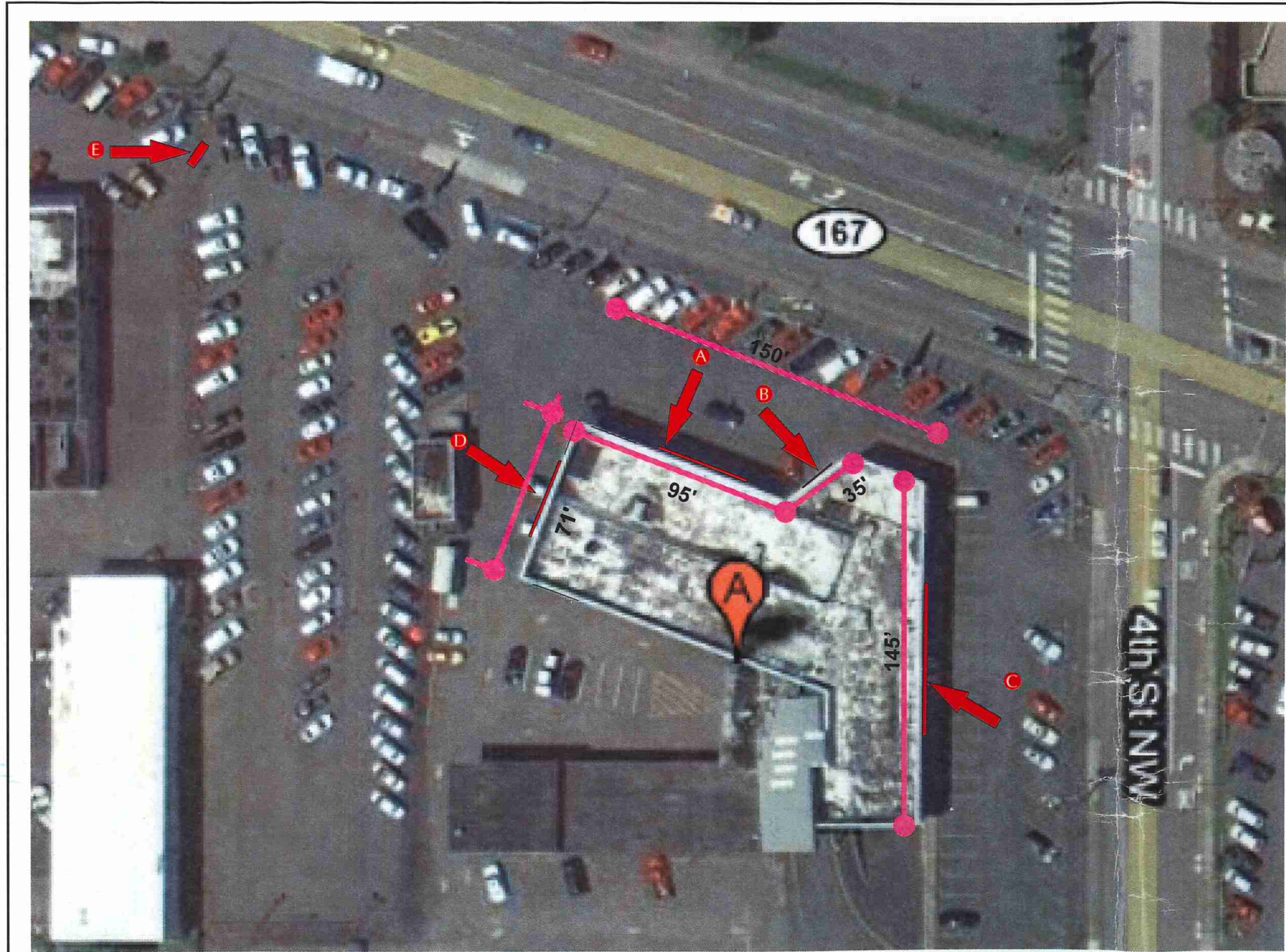
CASE NO. B-11-0275

FOR - WALL SIGNS APPROVED

A - $95 \cdot 1.5 = 142.5$

NEED - EXACT MEASURES
OF ALL WALLS
FACING NORTH

NORTH WALLS
 $95', 35', 33' \cdot 1.5 = 244.5'$



- A North Elevation : "NW MOTORSPORTS" Channel Letter set
- B North Elevation Secondary: "NWMSROCKS.com" Channel Letter set
- C East Elevation: "Truck, Trucks, and more Trucks" Channel Letter set
- D West Elevation: "Truck, Trucks, and more Trucks" Channel Letter set
- E Street Side Pylon: "Northwest Motorsport" D/F Pylon

Locations
Scale: 1/64" = 1'